

# V&V Reference Report

## L2 ASCDS Version : 8.4.5

Observation 4234 - L2 Version 3  
Chandra X-Ray Center

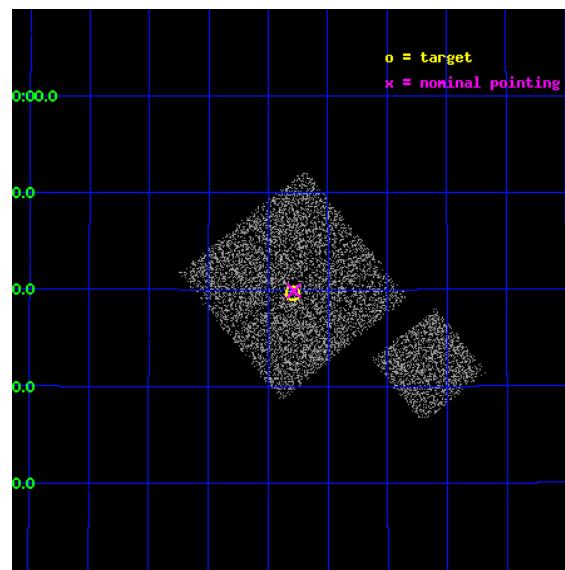
L2 Processing Date : Oct 26 2012

## Contents

<b>1</b>	<b>Front</b>	<b>2</b>
<b>2</b>	<b>OBI</b>	<b>3</b>
2.1	OBI . . . . .	3
2.1.1	Images . . . . .	3
2.1.2	Bias . . . . .	3
2.1.3	Parameters . . . . .	4
2.1.4	Events . . . . .	4
2.2	Compared Parameters . . . . .	5
2.3	Aspect . . . . .	6
2.4	Star Slots . . . . .	9
2.4.1	Slot 3 . . . . .	9
2.4.2	Slot 4 . . . . .	10
2.4.3	Slot 5 . . . . .	11
2.4.4	Slot 6 . . . . .	12
2.4.5	Slot 7 . . . . .	13
2.5	FID Slots . . . . .	14
2.5.1	Slot 0 . . . . .	14
2.5.2	Slot 1 . . . . .	15
2.5.3	Slot 2 . . . . .	16
<b>A</b>	<b>Summary</b>	<b>17</b>
A.1	Status . . . . .	17
A.2	Comments . . . . .	17

# 1 Front

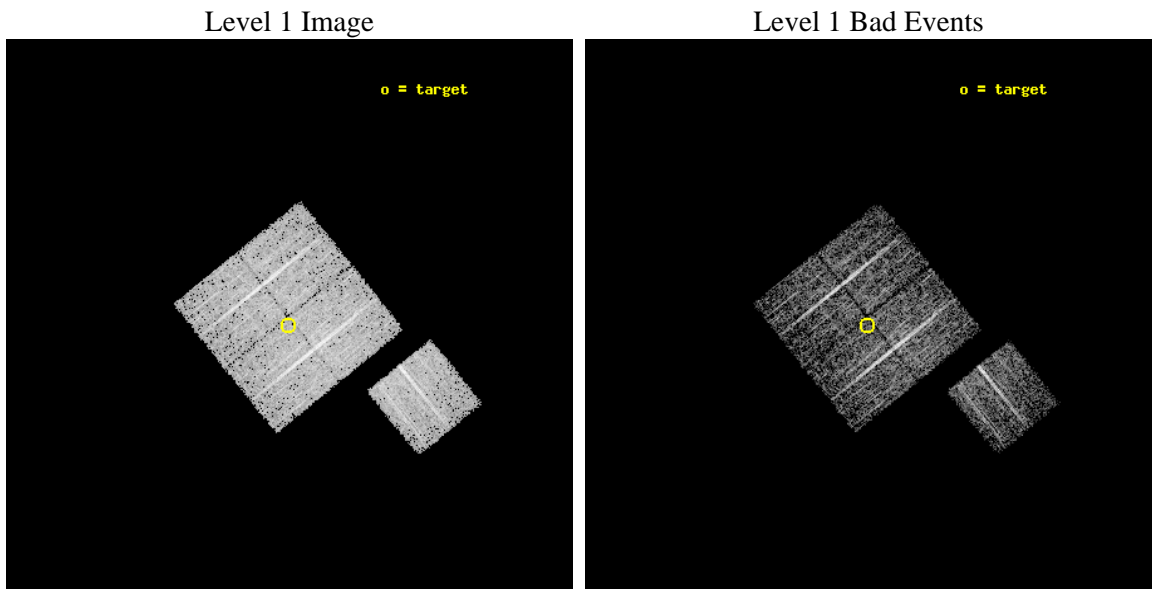
seq_num	900277	Sequence number
obs_id	4234	Observation id
title	A CHANDRA WIDE-FIELD SURVEY TO MAP THE COSMIC WEB AND INVESTIGATE THE EVOLUTION OF NUCLEAR ACCRETION	Proposal title
observer	Dr. Christine Jones	Principal investigator
object	SS37	Source name
dtcycle	0	&#160
cycle	P	events from which exps? Prim/Second/Both
ra_targ	219.323765	Observer's specified target RA [deg]
dec_targ	33.660612	Observer's specified target Dec [deg]
ra_nom	219.32106909137	Nominal RA [deg]
dec_nom	33.664688110052	Nominal Dec [deg]
roll_nom	141.0101935704	Nominal Roll [deg]
revision	3	Processing version of data
ontime	4718.1999908984	Sum of GTIs [s]
livetime	4656.553234529	Livetime [s]
ontime0	4718.1999908984	Sum of GTIs [s]
ontime1	4715.0589907467	Sum of GTIs [s]
ontime2	4718.1999908984	Sum of GTIs [s]
ontime3	4718.1999908984	Sum of GTIs [s]
ontime6	4718.1999908984	Sum of GTIs [s]
l2events	9621	Number of level 2 events



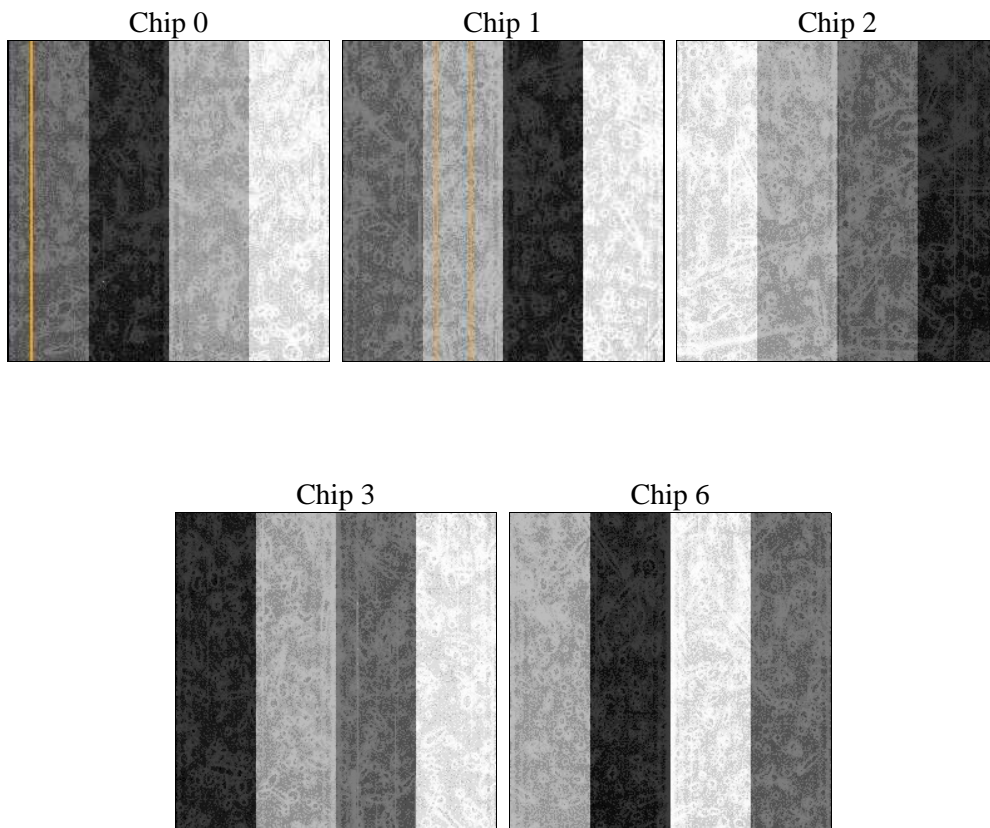
## 2 OBI

### 2.1 OBI

#### 2.1.1 Images



#### 2.1.2 Bias



### 2.1.3 Parameters

obi_num	1	Obi number	sched_exp_time	4941.283000	[s] Scheduled observation exposure time
ascdsver	8.4.5	Processing system revision	ontime	4718.1999908984	Sum of GTIs [s]
caldsver	4.5.2	&#160	ontime0	4718.1999908984	Sum of GTIs [s]
date	2012-10-26T00:16:33	Date and time of file creation	ontime1	4715.0589907467	Sum of GTIs [s]
revision	3	Processing version of data	ontime2	4718.1999908984	Sum of GTIs [s]
			ontime3	4718.1999908984	Sum of GTIs [s]
			ontime6	4718.1999908984	Sum of GTIs [s]
			l1events	114872	Number of level 1 events

### 2.1.4 Events

	ccd 0	ccd 1	ccd 2	ccd 3	ccd 6
level 1 events	22059	21487	25832	23110	22384
rejected events	19612	19113	23517	20792	20037
rejected %	88%	88%	91%	89%	89%

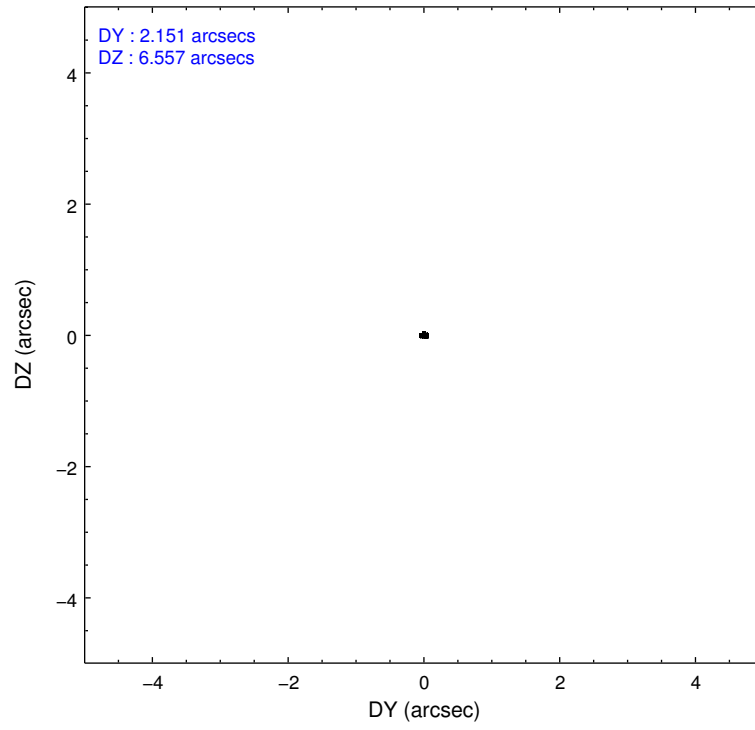
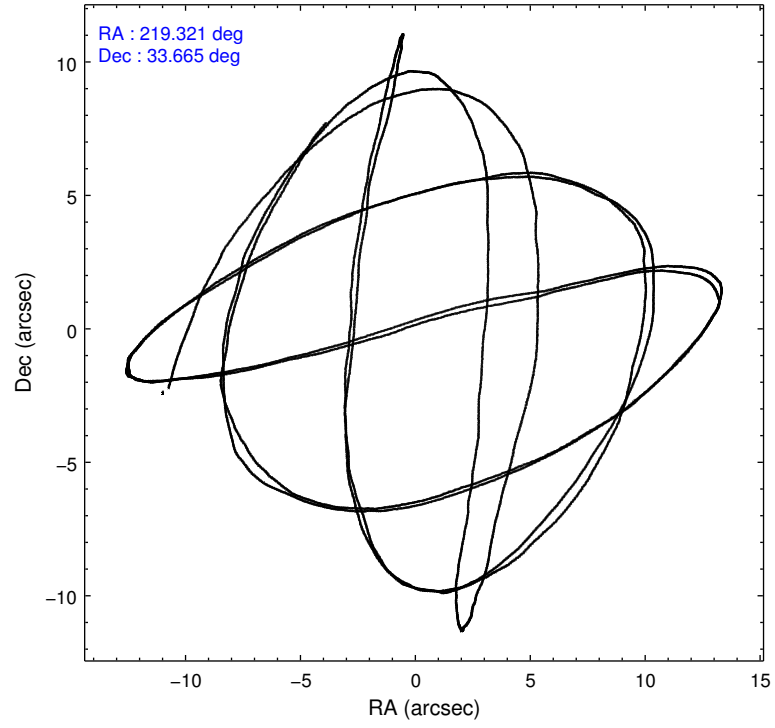
	ccd 0	ccd 1	ccd 2	ccd 3	ccd 6
grade 0 events	927	786	896	861	828
	4%	3%	3%	3%	3%
grade 1 events	14	7	9	12	13
	0%	0%	0%	0%	0%
grade 2 events	558	525	527	476	472
	2%	2%	2%	2%	2%
grade 3 events	284	307	256	277	298
	1%	1%	0%	1%	1%
grade 4 events	252	270	241	268	269
	1%	1%	0%	1%	1%
grade 5 events	686	750	645	758	743
	3%	3%	2%	3%	3%
grade 6 events	427	486	397	438	482
	1%	2%	1%	1%	2%
grade 7 events	18911	18356	22861	20020	19279
	85%	85%	88%	86%	86%

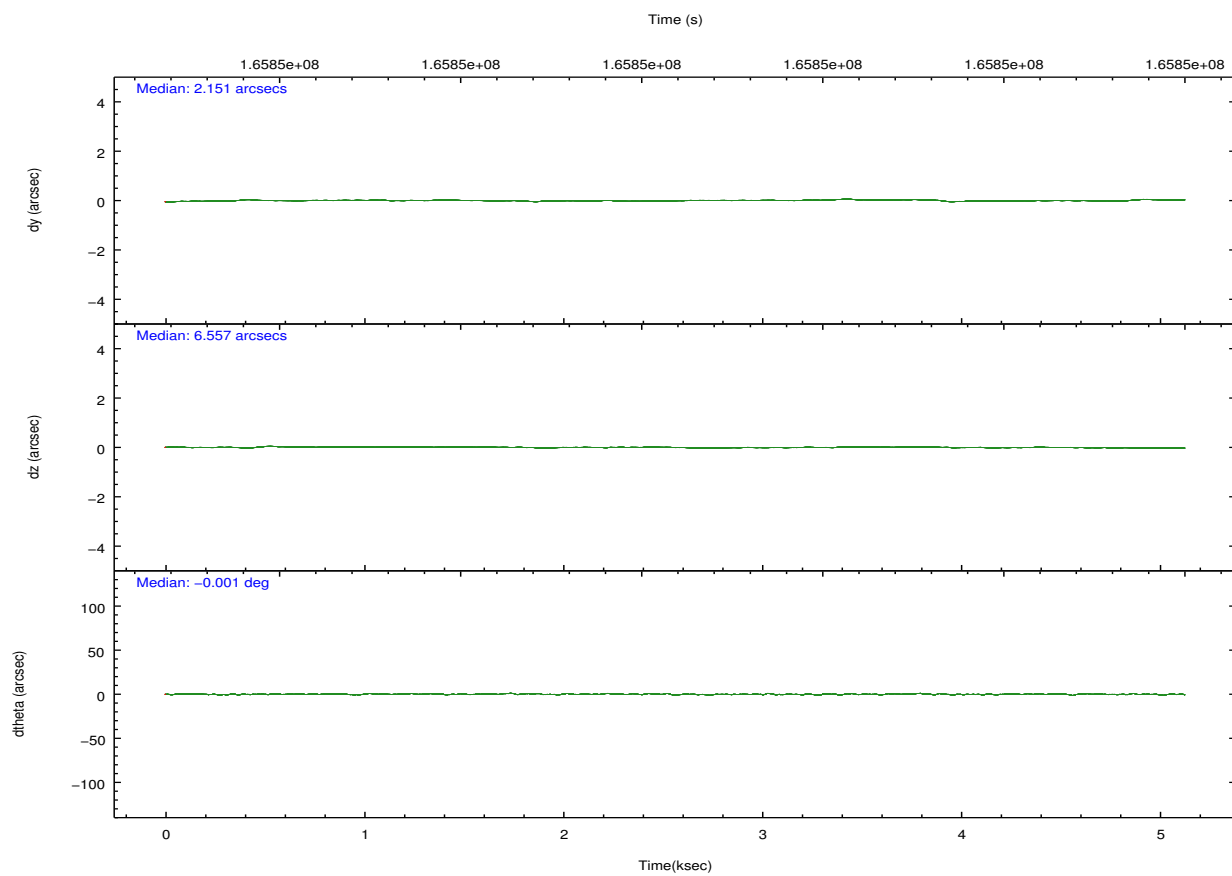
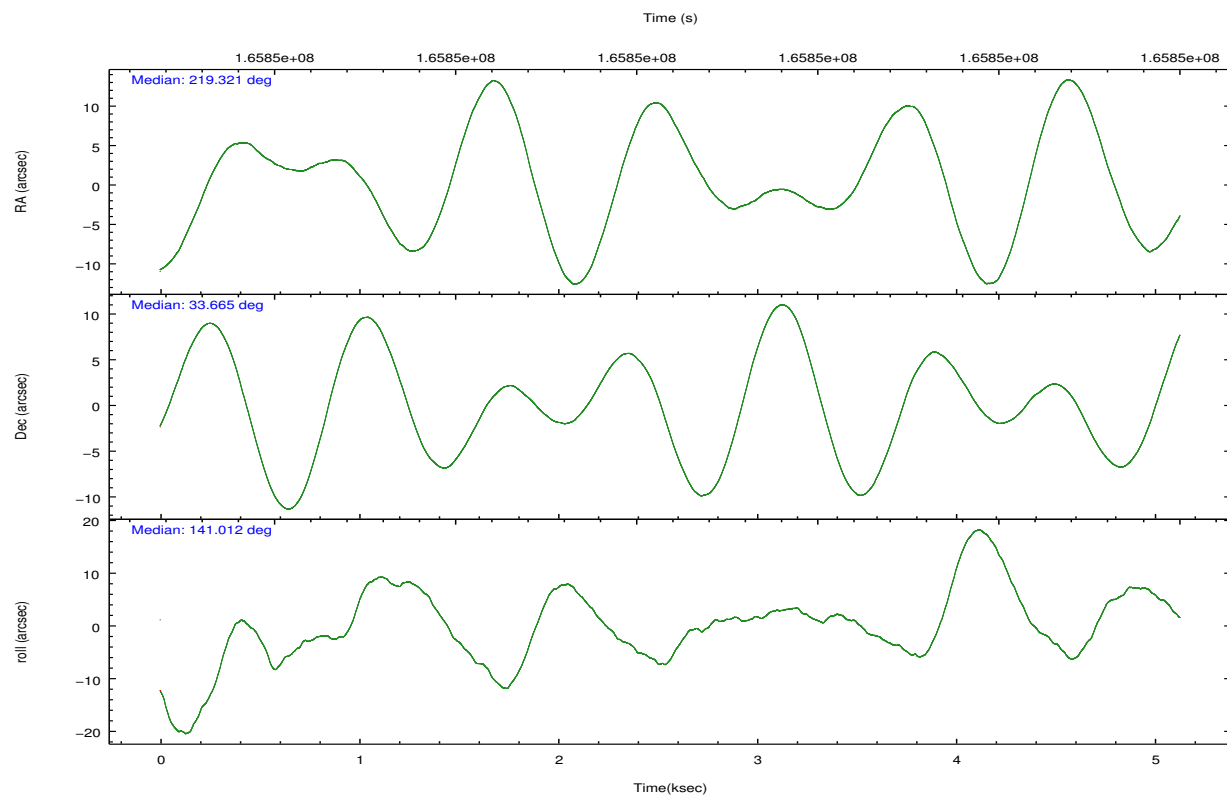


## 2.2 Compared Parameters

Parameter	Planned	Actual	Parameter	Planned	Actual
Instrument	ACIS	ACIS	Obspar format version number	7	7
Detector	ACIS-01236	ACIS-01236	Obspar file type	PREDICTED	ACTUAL
Grating	NONE	NONE	Obspar update status	NONE	UPDATED
Data mode	VFAINT	VFAINT	Number of optional ACIS chips dropped	0	0
Observation mode	POINTING	POINTING	On-chip summing requested	N	N
[deg] Pointing RA	219.353657	219.3210690913678	Subarray requested	NONE	NONE
[deg] Pointing Dec	33.660529	33.66468811005245	Alternating exposures requested	N	N
[deg] Pointing Roll	140.783435	141.0101935703968	[s] Primary exposure time	0.000000	3.1
[mm] SIM focus pos	-0.782348	-0.7809083437167272			
[mm] SIM defocus	0	0.001439871863259334			
[mm] SIM translation stage pos	-233.592463	-233.5874344608287			
[mm] SIM translation stage offset	0	-0.005018542100998502			
[s] Observation start time (MET)	165848805.184000	165848394.28175			
Observation start date	2003-04-04T13:05:41	2003-04-04T12:59:54			
[s] Observation end time (MET)	165853747.184000	165854061.50699			
Observation end date	2003-04-04T14:28:03	2003-04-04T14:34:21			
Read mode	TIMED	TIMED			

## 2.3 Aspect



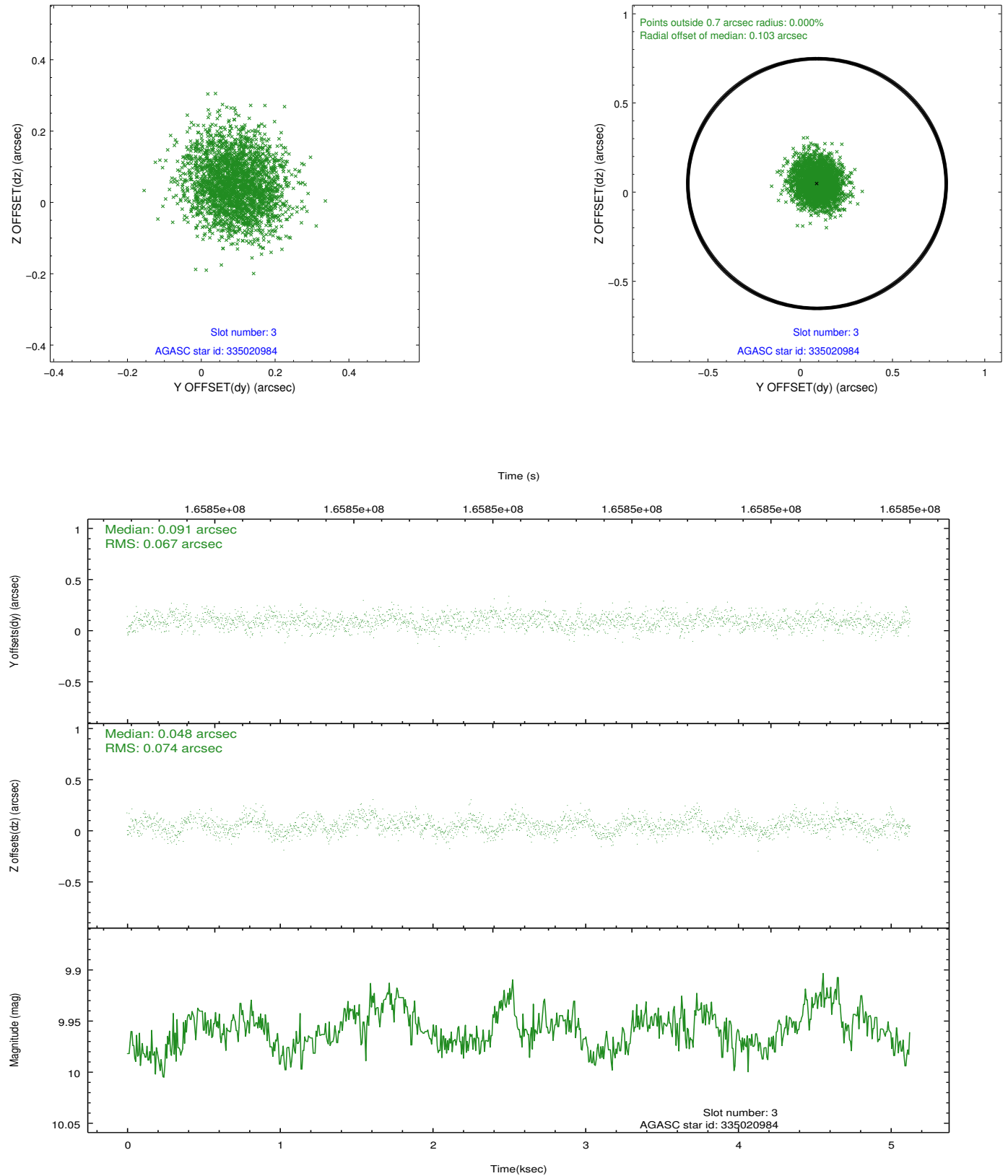


### Slot Statistics

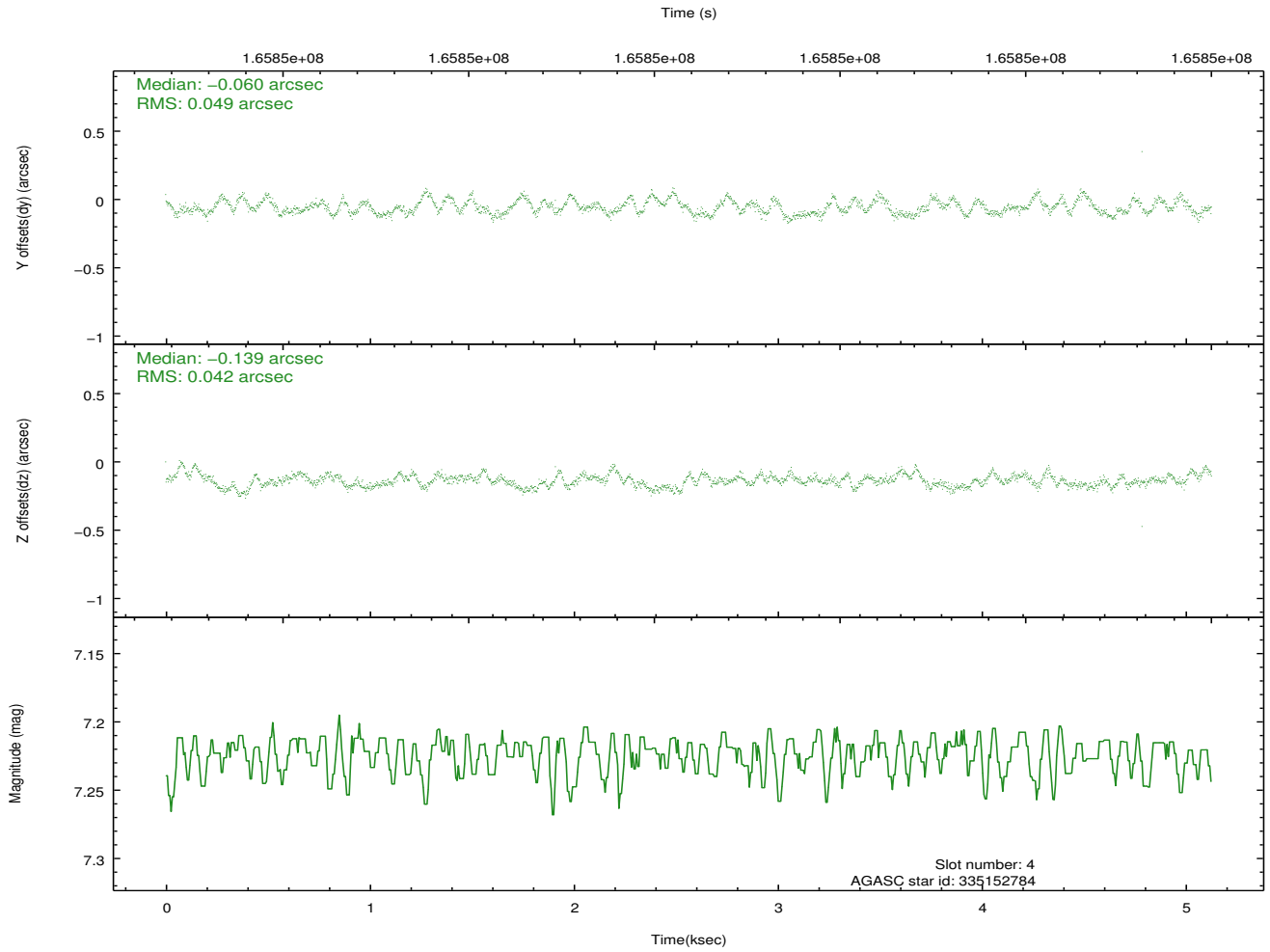
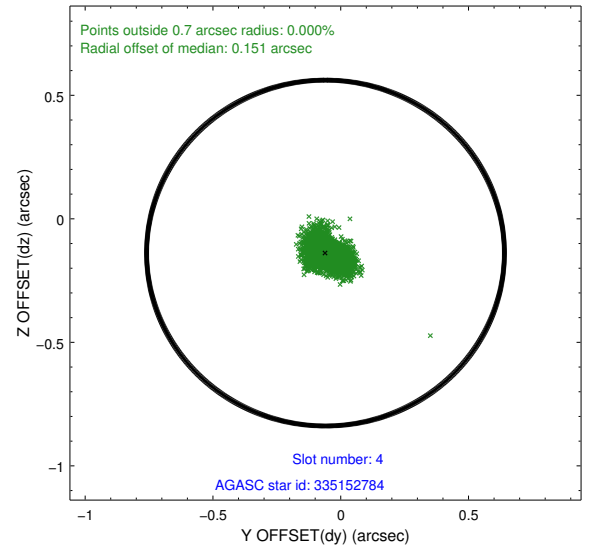
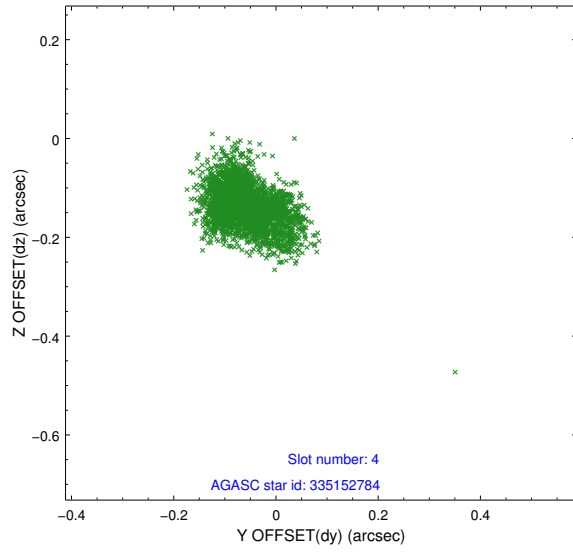
slot	status	id	mag	n_pts	med_dy	med_dz	dr1	dr2	ra	dec	mean_y	mean_z
0	FID	ACIS-I-1	7.25	1251	0.007	-0.003	0.006	0.011	0.000000	0.000000	937.65	-829.96
1	FID	ACIS-I-5	7.24	1251	-0.074	0.049	0.005	0.009	0.000000	0.000000	-1809.83	1067.05
2	FID	ACIS-I-6	7.26	1251	-0.025	0.025	0.007	0.011	0.000000	0.000000	401.94	1712.82
3	GUIDE	335020984	9.96	2475	0.091	0.048	0.108	0.169	218.841668	33.815112	1541.00	533.89
4	GUIDE	335152784	7.22	2502	-0.060	-0.139	0.068	0.111	219.280617	33.678221	210.08	88.97
5	GUIDE	335154960	9.57	2500	0.069	0.051	0.094	0.152	219.209961	33.303073	-479.06	1270.03
6	GUIDE	335158960	9.54	2467	0.019	0.023	0.098	0.162	219.582957	33.009904	-2017.05	1376.98
7	GUIDE	335160704	10.56	2495	-0.121	0.007	0.168	0.296	219.376924	33.063739	-1413.87	1620.71

## 2.4 Star Slots

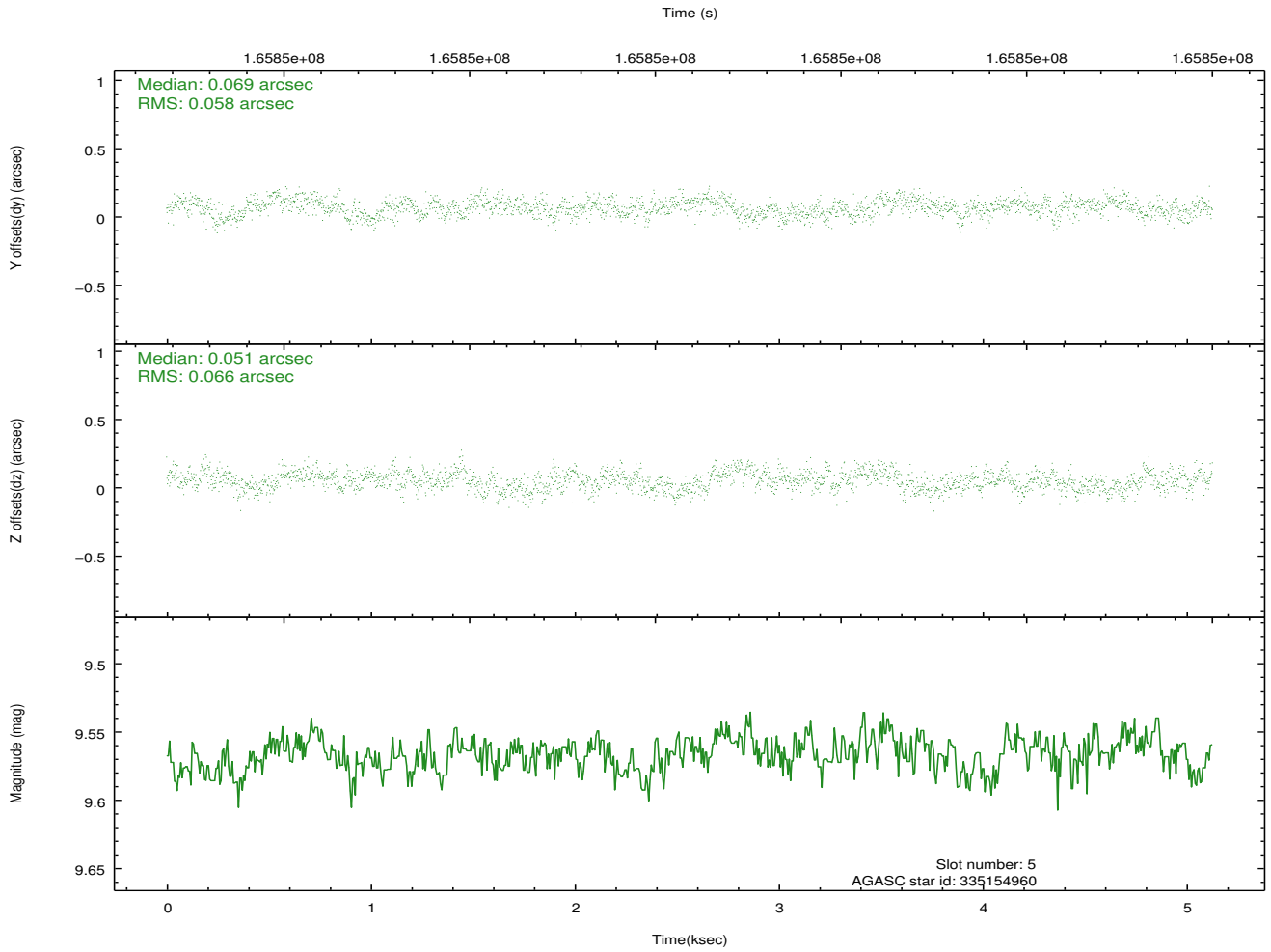
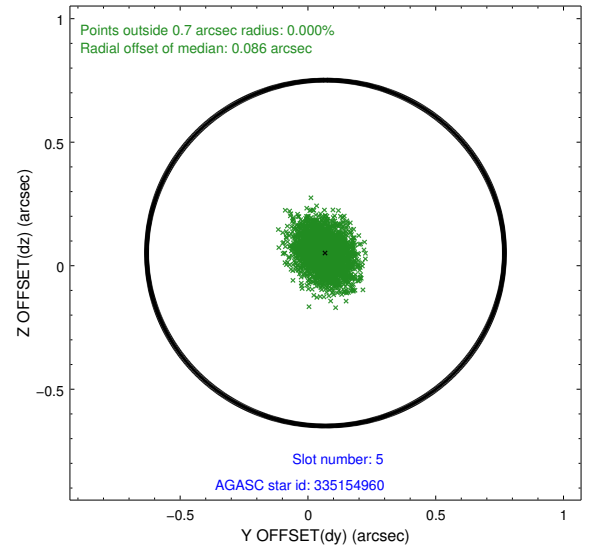
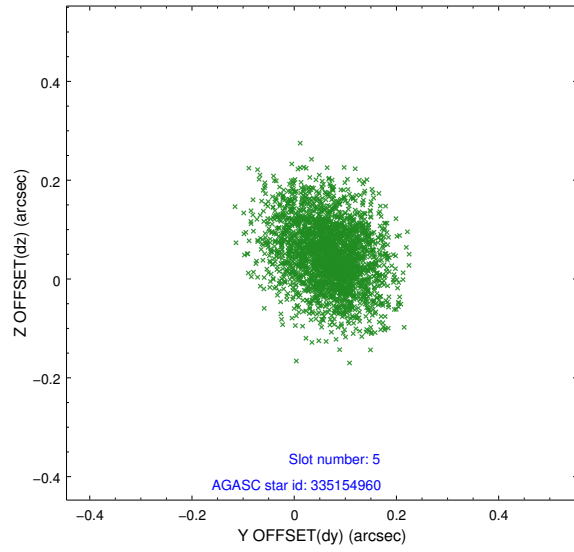
### 2.4.1 Slot 3



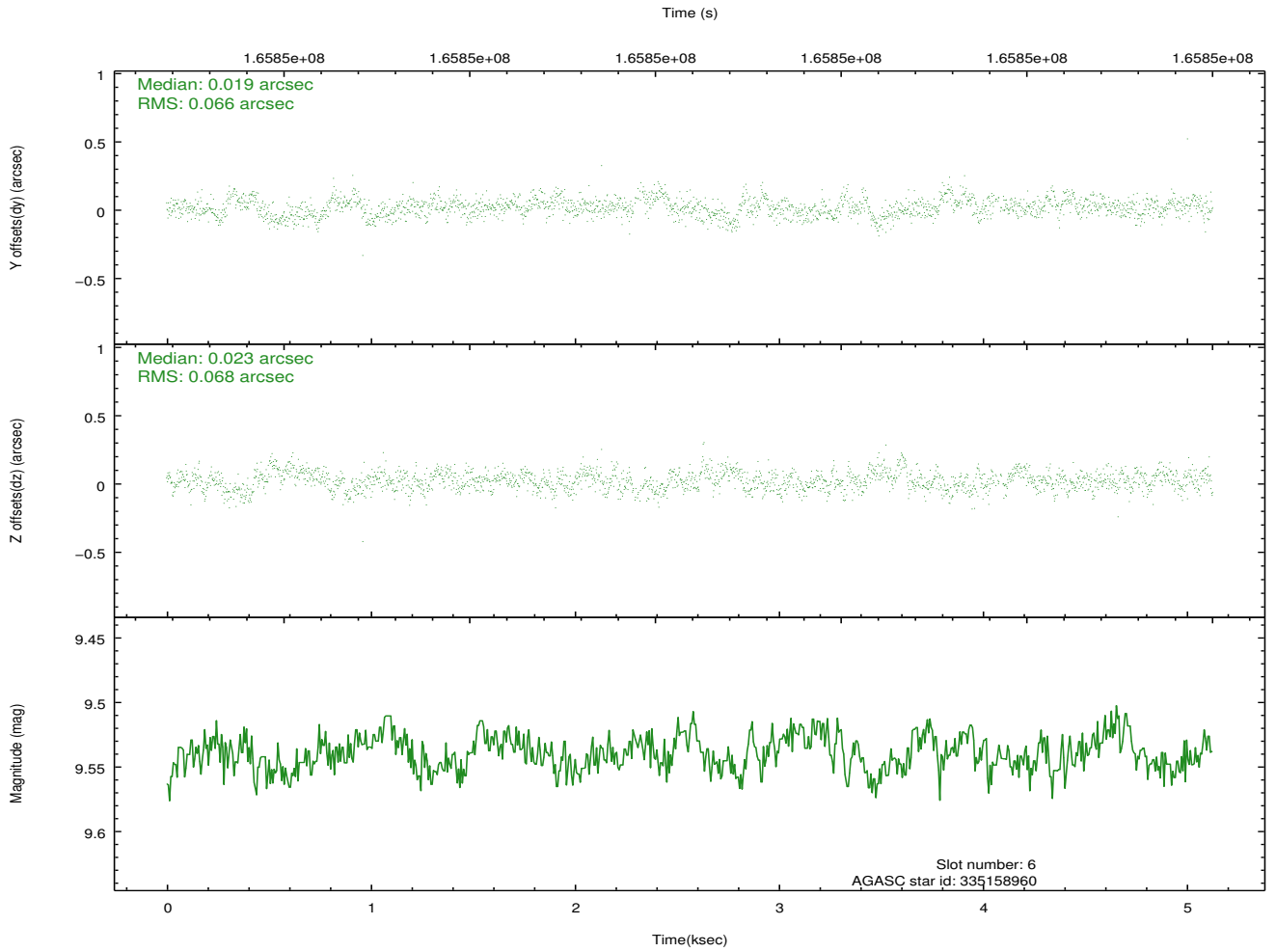
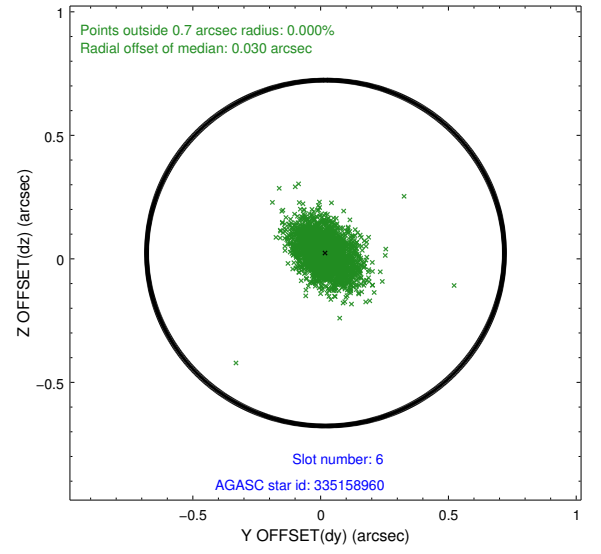
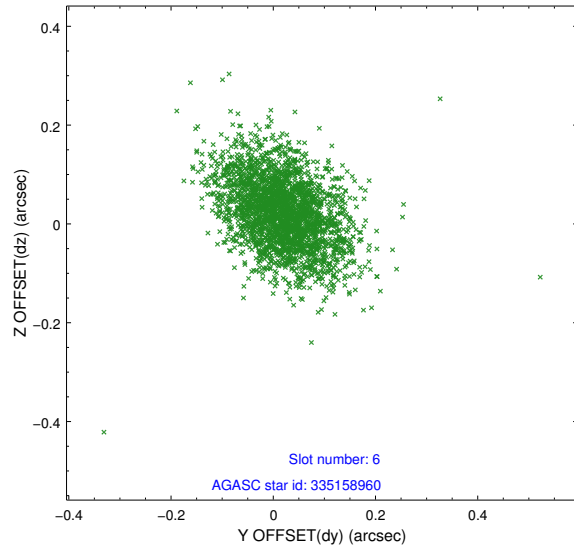
## 2.4.2 Slot 4



### 2.4.3 Slot 5

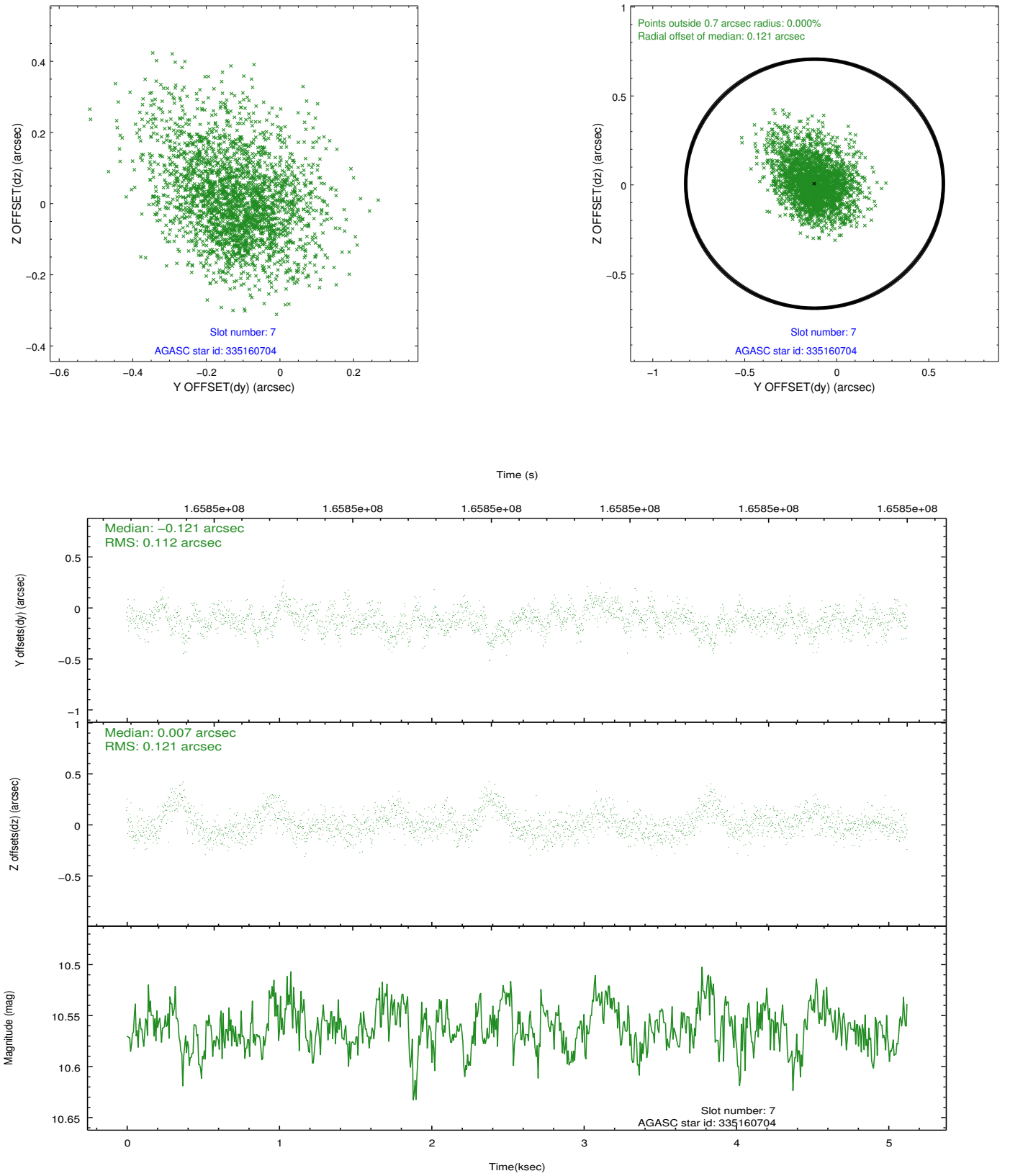


## 2.4.4 Slot 6



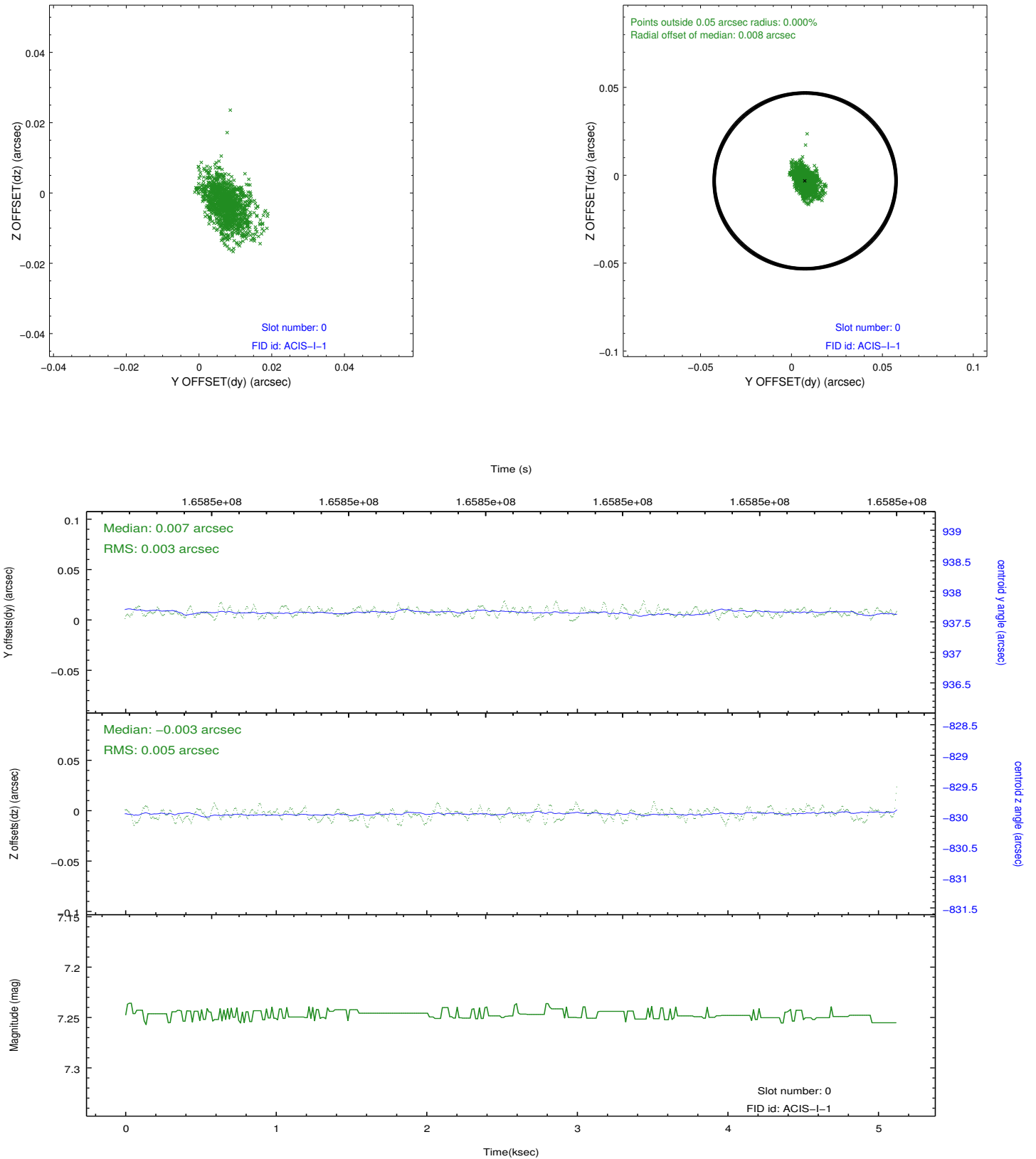


## 2.4.5 Slot 7

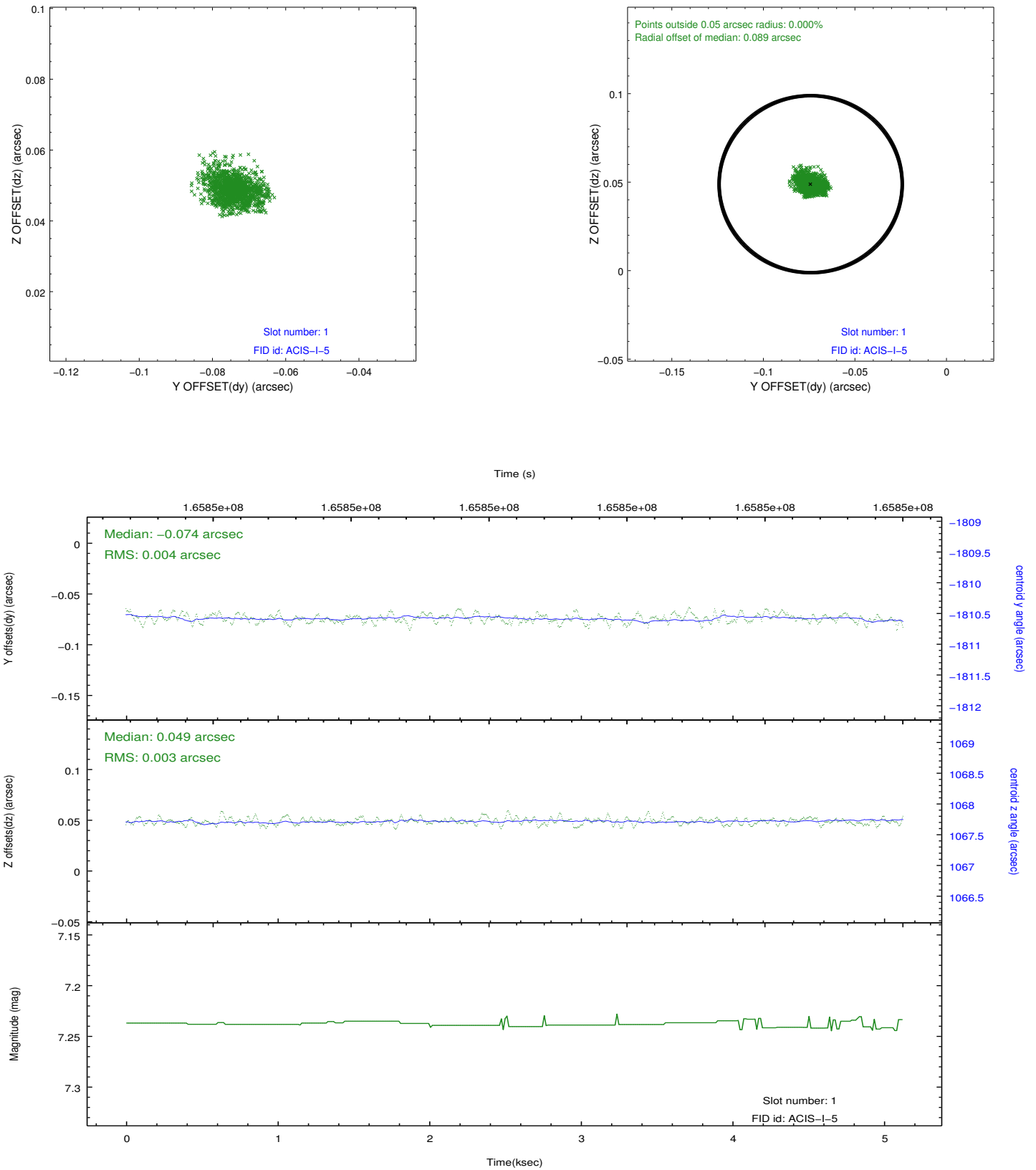


## 2.5 FID Slots

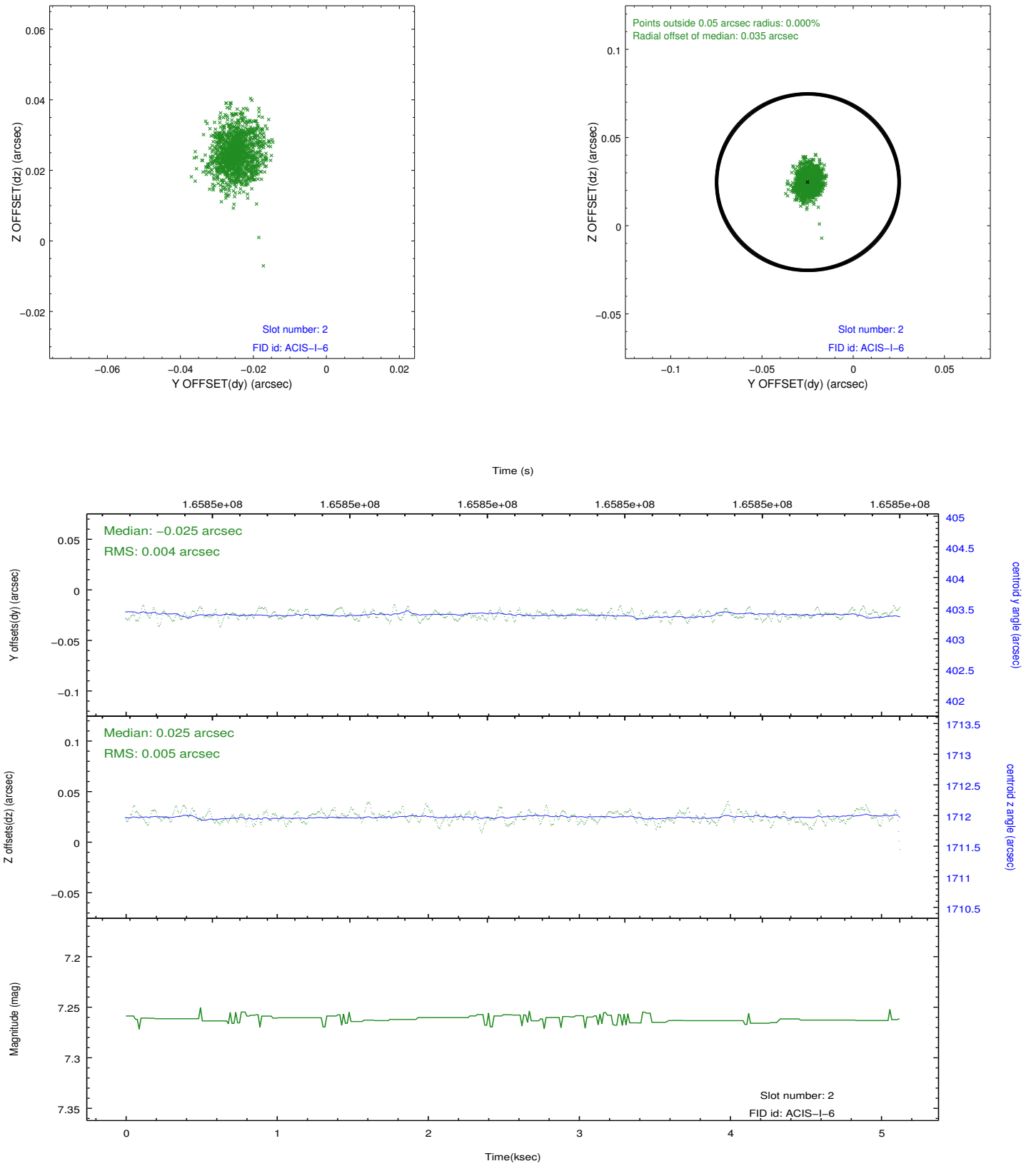
### 2.5.1 Slot 0



## 2.5.2 Slot 1



### 2.5.3 Slot 2



## A Summary

### A.1 Status

V&V Scientist	Jen Lauer
V&V Date (YYYY-MM-DD)	2012.11.13
V&V Edition	1
V&V Disposition and Status	OK
V&V Charge Time	4.721

### A.2 Comments