

V&V Reference Report

L2 ASCDS Version : 8.4.5

Observation 4134 - L2 Version 4
Chandra X-Ray Center

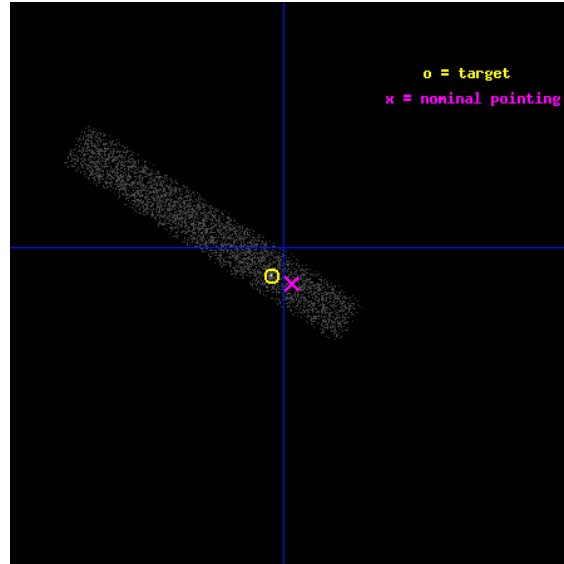
L2 Processing Date : Oct 22 2012

Contents

1	Front	2
2	OBI	3
2.1	OBI	3
2.1.1	Images	3
2.1.2	Bias	3
2.1.3	Parameters	4
2.1.4	Events	4
2.2	Compared Parameters	5
2.3	Aspect	6
2.4	Star Slots	9
2.4.1	Slot 3	9
2.4.2	Slot 5	10
2.4.3	Slot 6	11
2.4.4	Slot 7	12
2.5	FID Slots	13
2.5.1	Slot 0	13
2.5.2	Slot 1	14
2.5.3	Slot 2	15
A	Summary	16
A.1	Status	16
A.2	Comments	16

1 Front

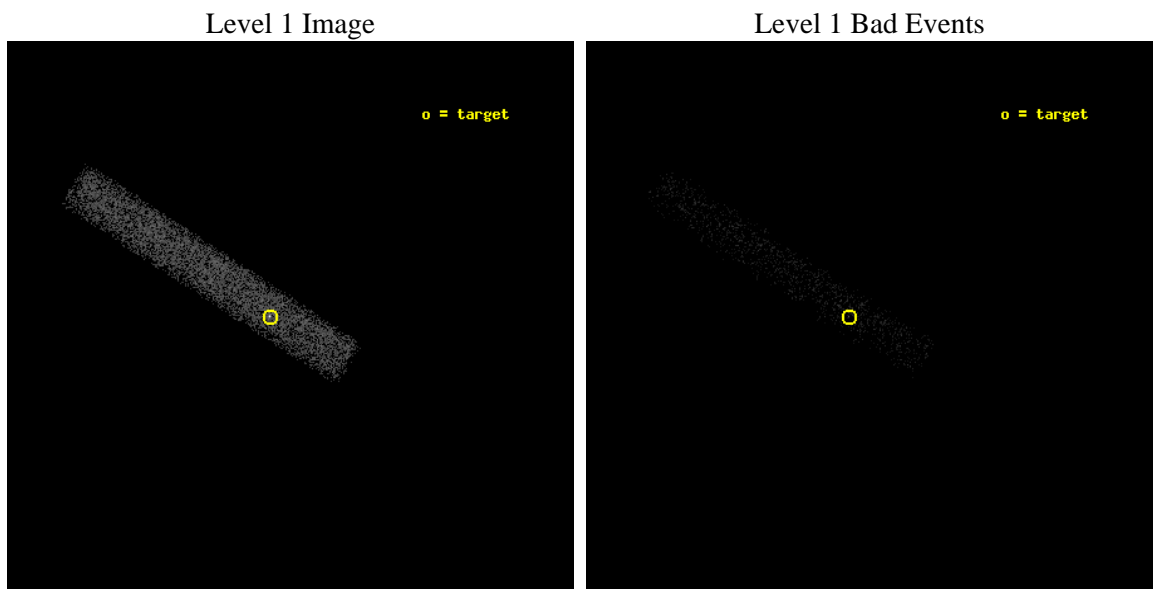
seq_num	700813	Sequence number
obs_id	4134	Observation id
title	CHANDRA OBSERVATIONS OF THE FIRST SAMPLE OF RADIO-LOUD NARROW LINE SEYFERT I GALAXIES	Proposal title
observer	Dr. Sally Laurent-Muehleisen	Principal investigator
object	FIRST J074402+514917	Source name
dtcycle	0	
cycle	P	events from which exps? Prim/Second/Both
ra_targ	116.009167	Observer's specified target RA [deg]
dec_targ	51.821528	Observer's specified target Dec [deg]
ra_nom	115.99478385971	Nominal RA [deg]
dec_nom	51.817802166872	Nominal Dec [deg]
roll_nom	212.91121041582	Nominal Roll [deg]
revision	4	Processing version of data
ontime	10293.077033341	Sum of GTIs [s]
livetime	9335.2775560865	Livetime [s]
ontime7	10293.077033341	Sum of GTIs [s]
l2events	6198	Number of level 2 events



2 OBI

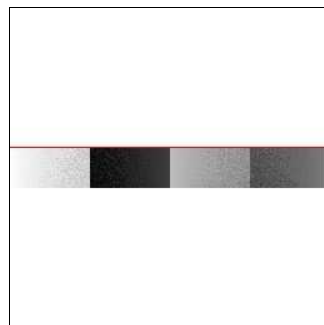
2.1 OBI

2.1.1 Images



2.1.2 Bias

Chip 7



2.1.3 Parameters

obi_num	0	Obi number	sched_exp_time	10130.000000	[s] Scheduled observation exposure time
ascdsver	8.4.5	Processing system revision	ontime	10293.077033341	Sum of GTIs [s]
caldsver	4.5.2	 	ontime7	10293.077033341	Sum of GTIs [s]
date	2012-10-22T17:23:50	Date and time of file creation	l1events	13618	Number of level 1 events
revision	4	Processing version of data			

2.1.4 Events

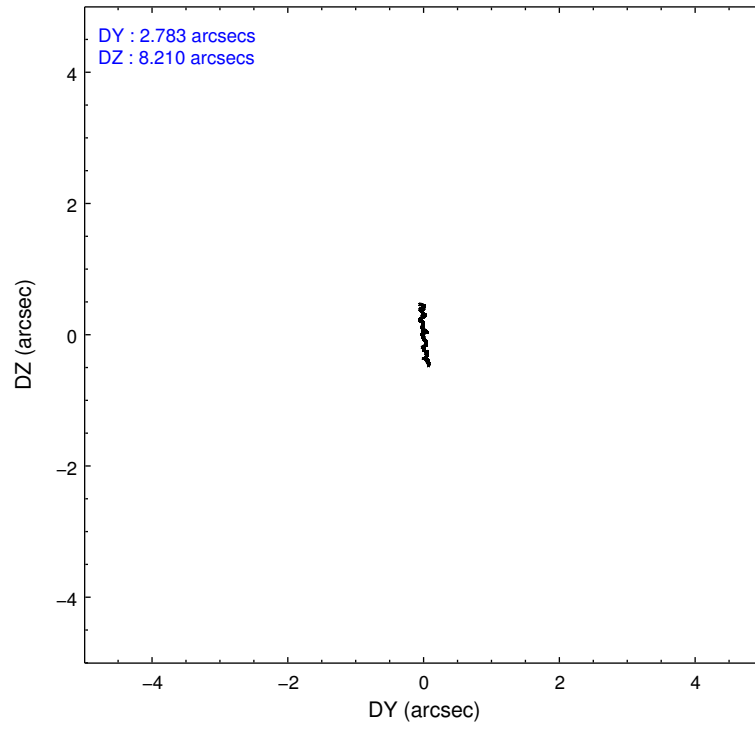
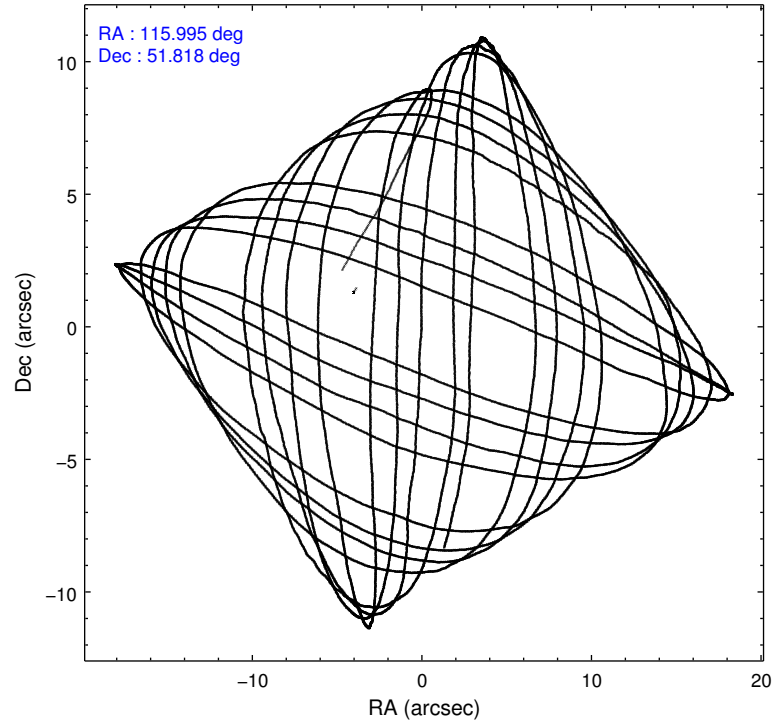
	ccd 7
level 1 events	13618
rejected events	7189
rejected %	52%

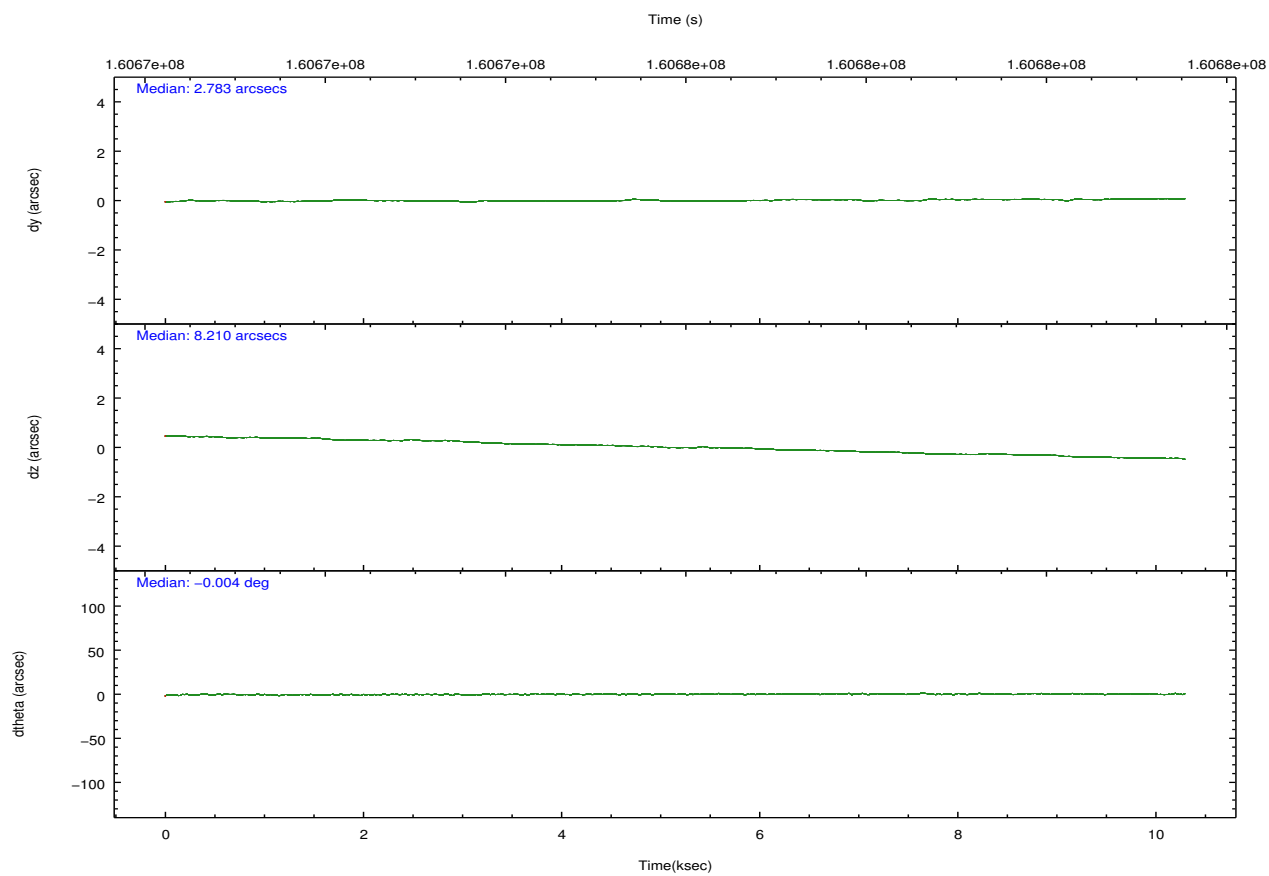
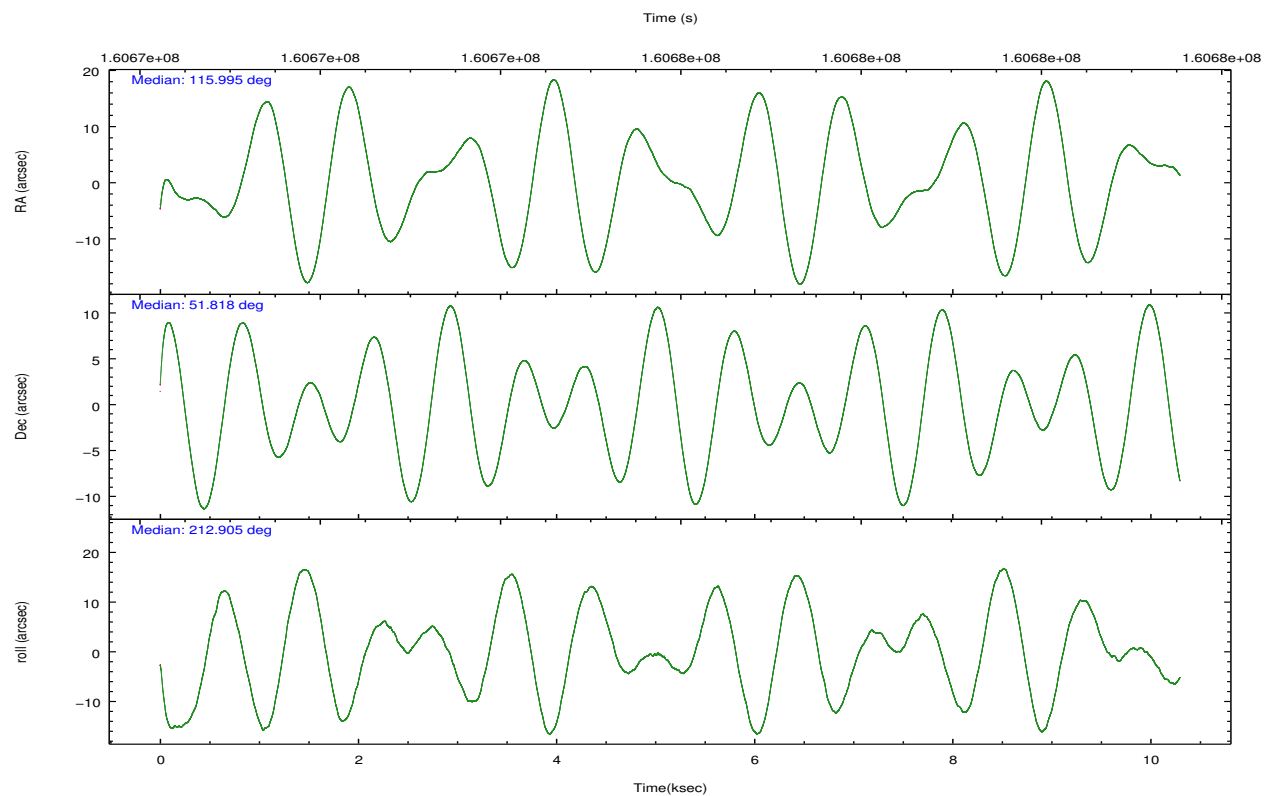
	ccd 7
grade 0 events	1014
	7%
grade 1 events	25
	0%
grade 2 events	1381
	10%
grade 3 events	901
	6%
grade 4 events	841
	6%
grade 5 events	1098
	8%
grade 6 events	2763
	20%
grade 7 events	5595
	41%

2.2 Compared Parameters

Parameter	Planned	Actual	Parameter	Planned	Actual
Instrument	ACIS	ACIS	Obspar format version number	7	7
Detector	ACIS-7	ACIS-7	Obspar file type	PREDICTED	ACTUAL
Grating	NONE	NONE	Obspar update status	NONE	UPDATED
Data mode	FAINT	FAINT	Number of optional ACIS chips dropped	0	0
Observation mode	POINTING	POINTING	On-chip summing requested	N	N
[deg] Pointing RA	116.014280	115.9947838597104	Subarray requested	CUSTOM	1/8
[deg] Pointing Dec	51.842195	51.81780216687174	Subarray start row	449	449
[deg] Pointing Roll	212.739240	212.9112104158181	Subarray row count	128	128
[mm] SIM focus pos	-0.684267	-0.6828225247311905	Alternating exposures requested	N	N
[mm] SIM defocus	0	0.001444936568705701	[s] Primary exposure time	0.000000	0.4
[mm] SIM translation stage pos	-190.132523	-190.1400660498719			
[mm] SIM translation stage offset	0	0.00754346686406393			
[s] Observation start time (MET)	160670899.184000	160669792.71384			
Observation start date	2003-02-03T14:47:15	2003-02-03T14:29:52			
[s] Observation end time (MET)	160681029.184000	160681748.31435			
Observation end date	2003-02-03T17:36:05	2003-02-03T17:49:08			
Read mode	TIMED	TIMED			

2.3 Aspect



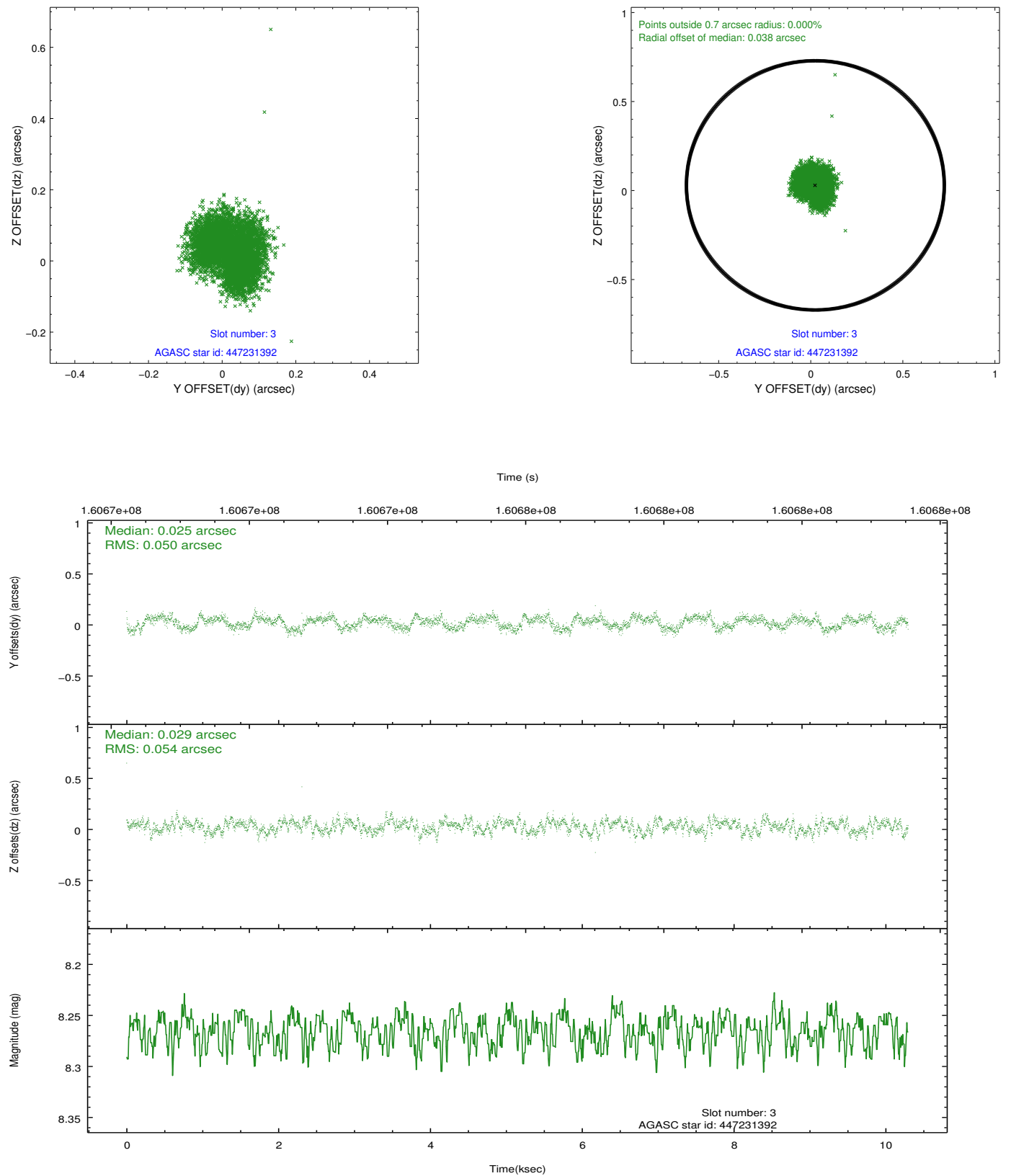


Slot Statistics

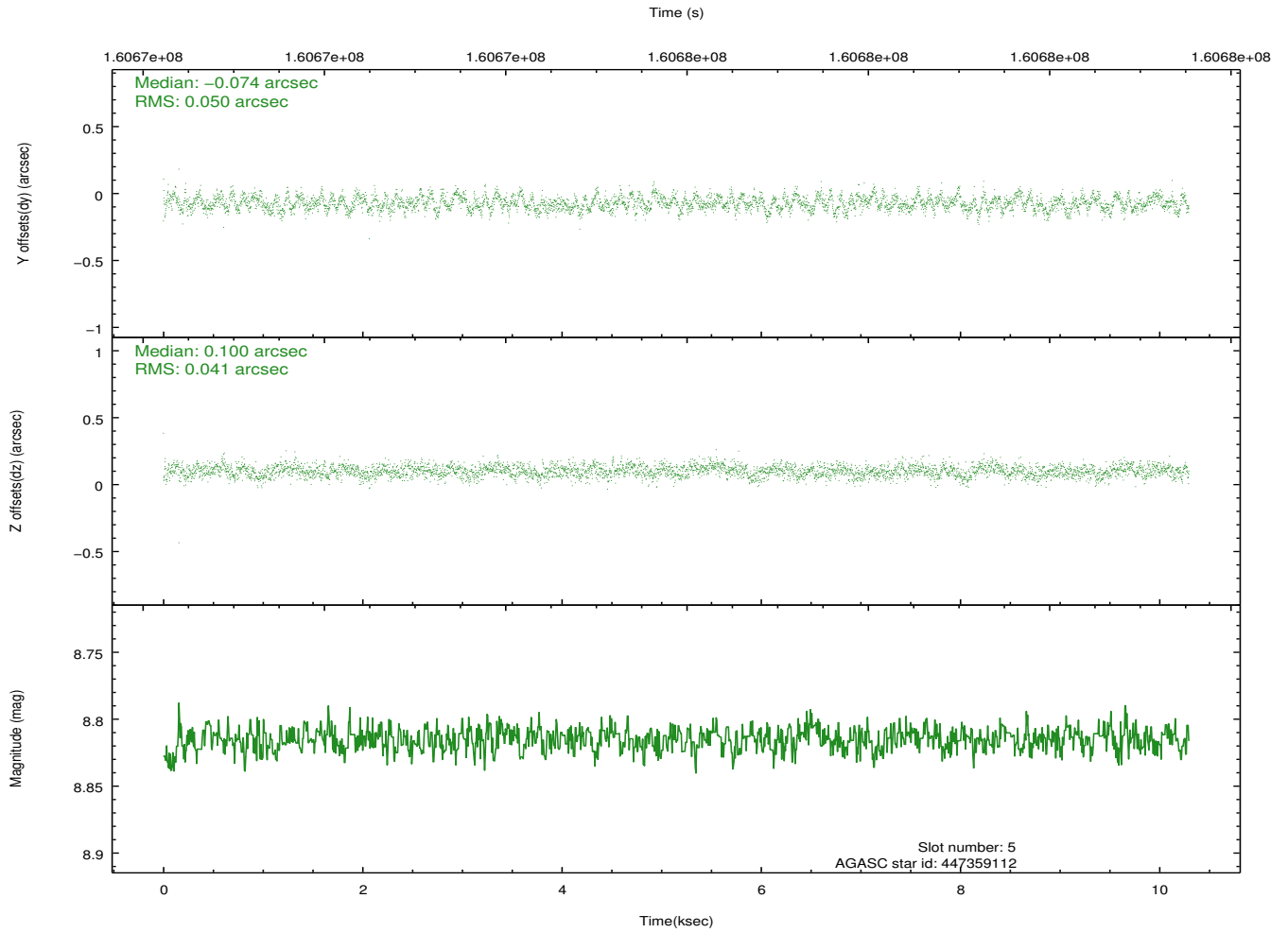
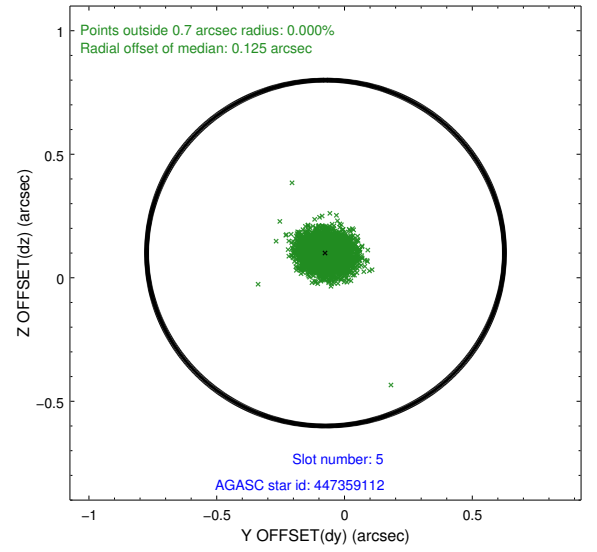
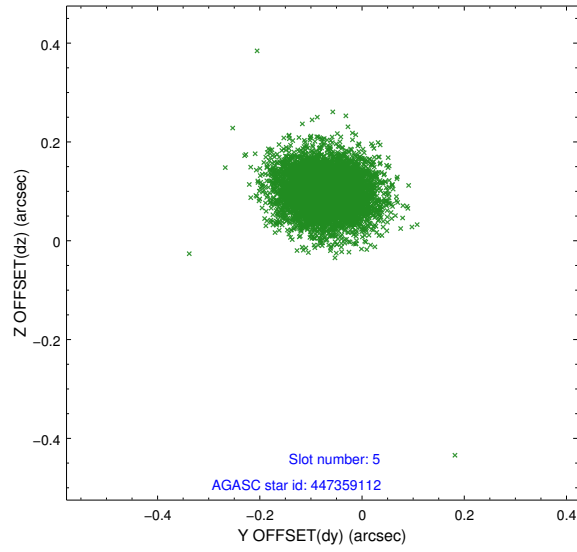
slot	status	id	mag	n_pts	med_dy	med_dz	dr1	dr2	ra	dec	mean_y	mean_z
0	FID	ACIS-S-2	7.11	2510	-0.015	-0.009	0.008	0.013	0.000000	0.000000	-755.45	-1729.42
1	FID	ACIS-S-4	7.20	2511	-0.013	0.010	0.007	0.012	0.000000	0.000000	2157.61	178.54
2	FID	ACIS-S-5	7.24	2511	-0.003	0.008	0.007	0.010	0.000000	0.000000	-1807.62	172.80
3	GUIDE	447231392	8.26	5023	0.025	0.029	0.080	0.119	115.602245	52.309234	-147.09	-1906.40
4	OMITTED		0.00	0	0.000	0.000	0.000	0.000	0.000000	0.000000	0.00	0.00
5	GUIDE	447359112	8.81	5022	-0.074	0.100	0.069	0.111	117.298926	51.725327	-2195.70	1881.64
6	GUIDE	447231568	9.73	5018	0.052	-0.051	0.088	0.146	115.159730	51.981581	1316.46	-1455.45
7	GUIDE	447229440	9.79	4953	0.004	-0.077	0.099	0.160	115.853131	52.276092	-545.73	-1506.47

2.4 Star Slots

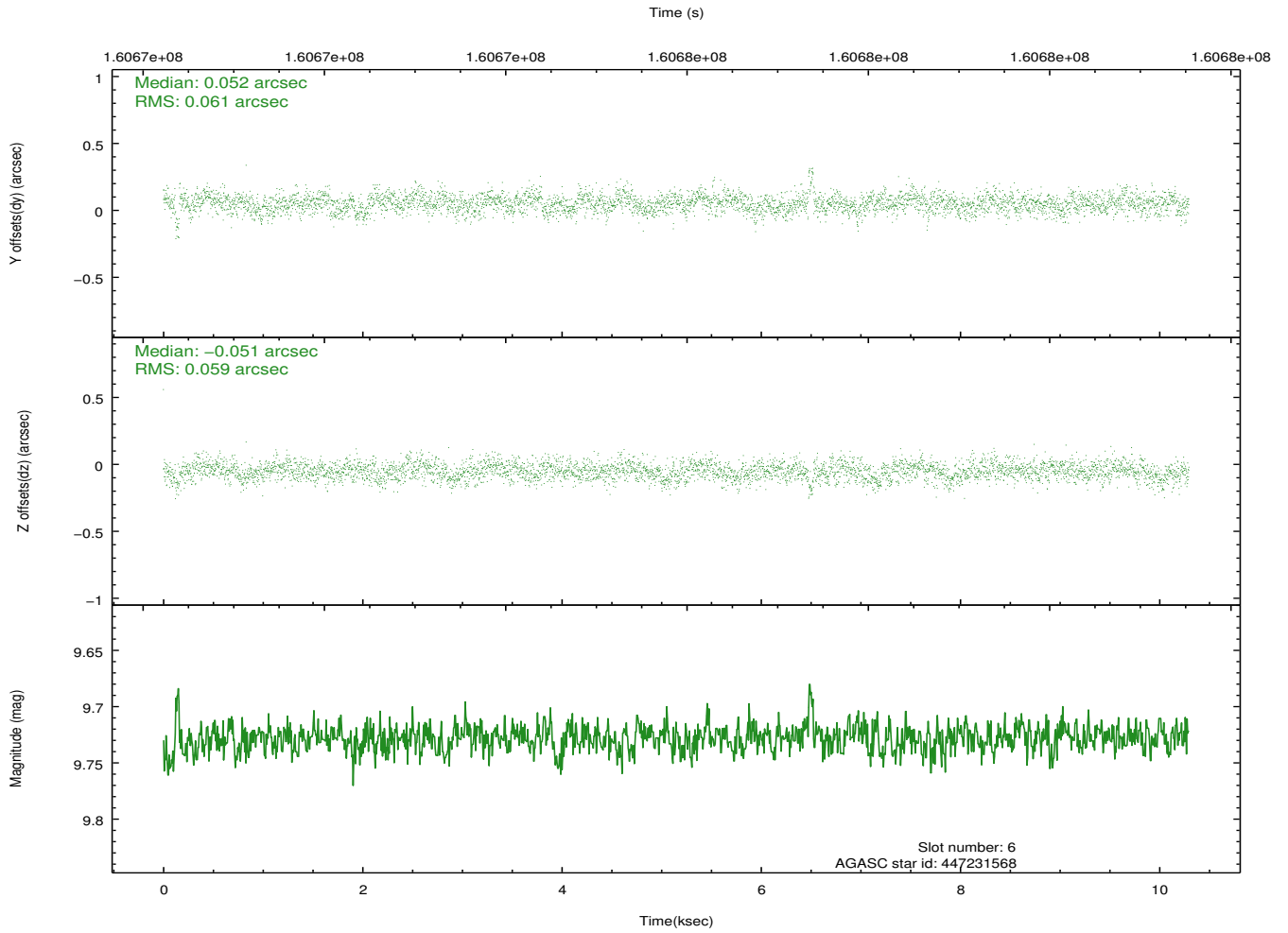
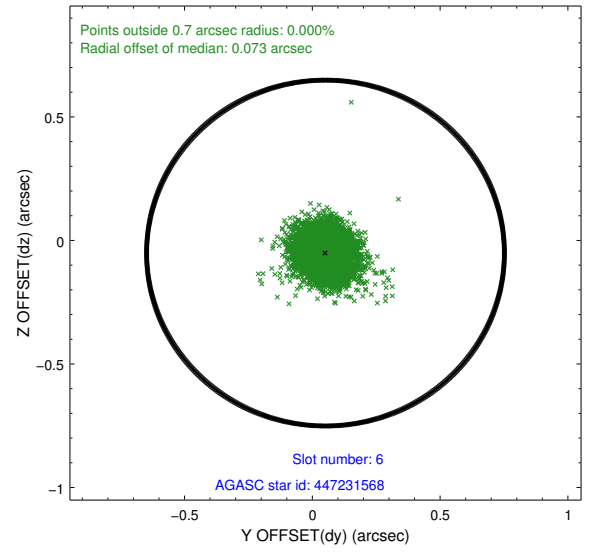
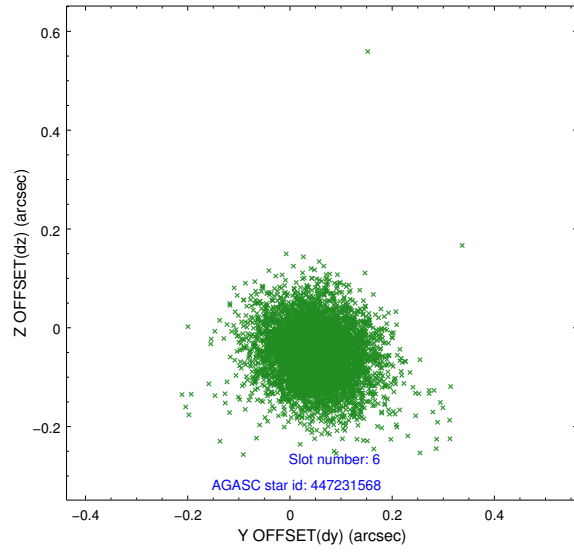
2.4.1 Slot 3



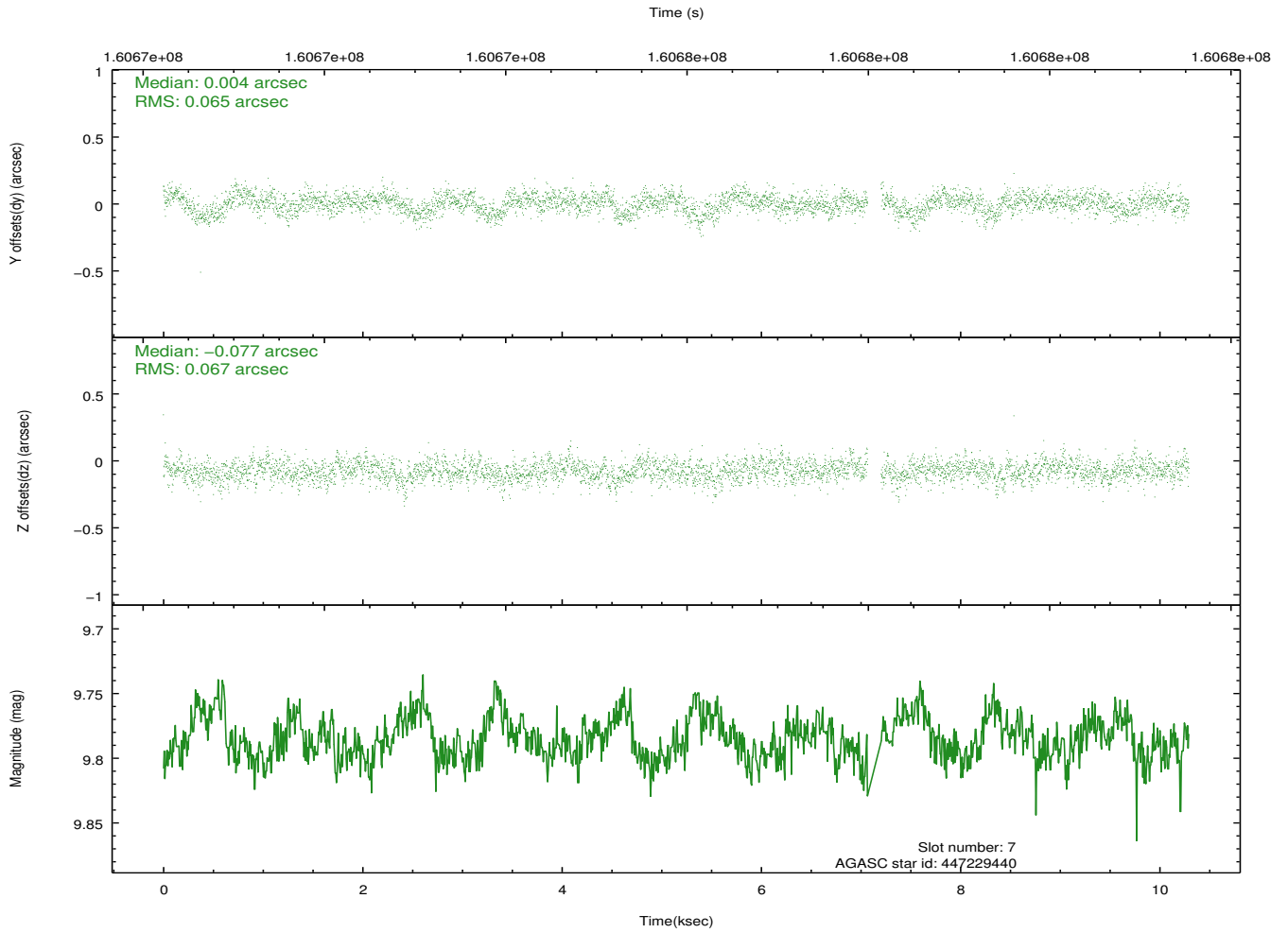
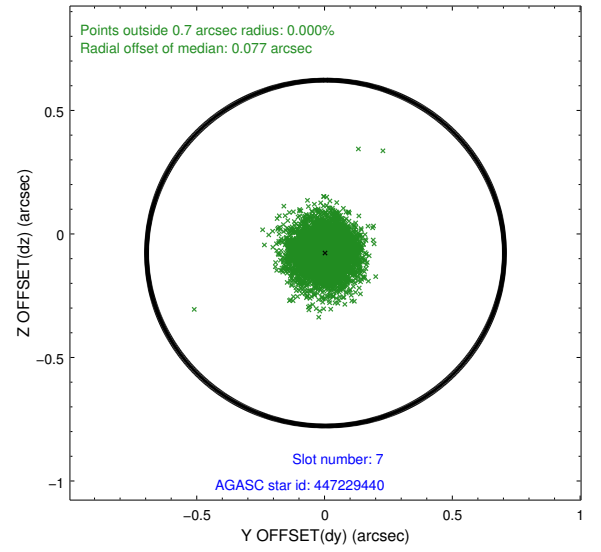
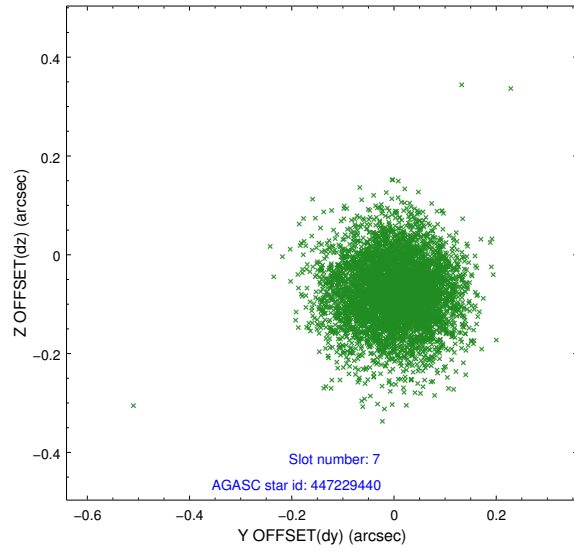
2.4.2 Slot 5



2.4.3 Slot 6

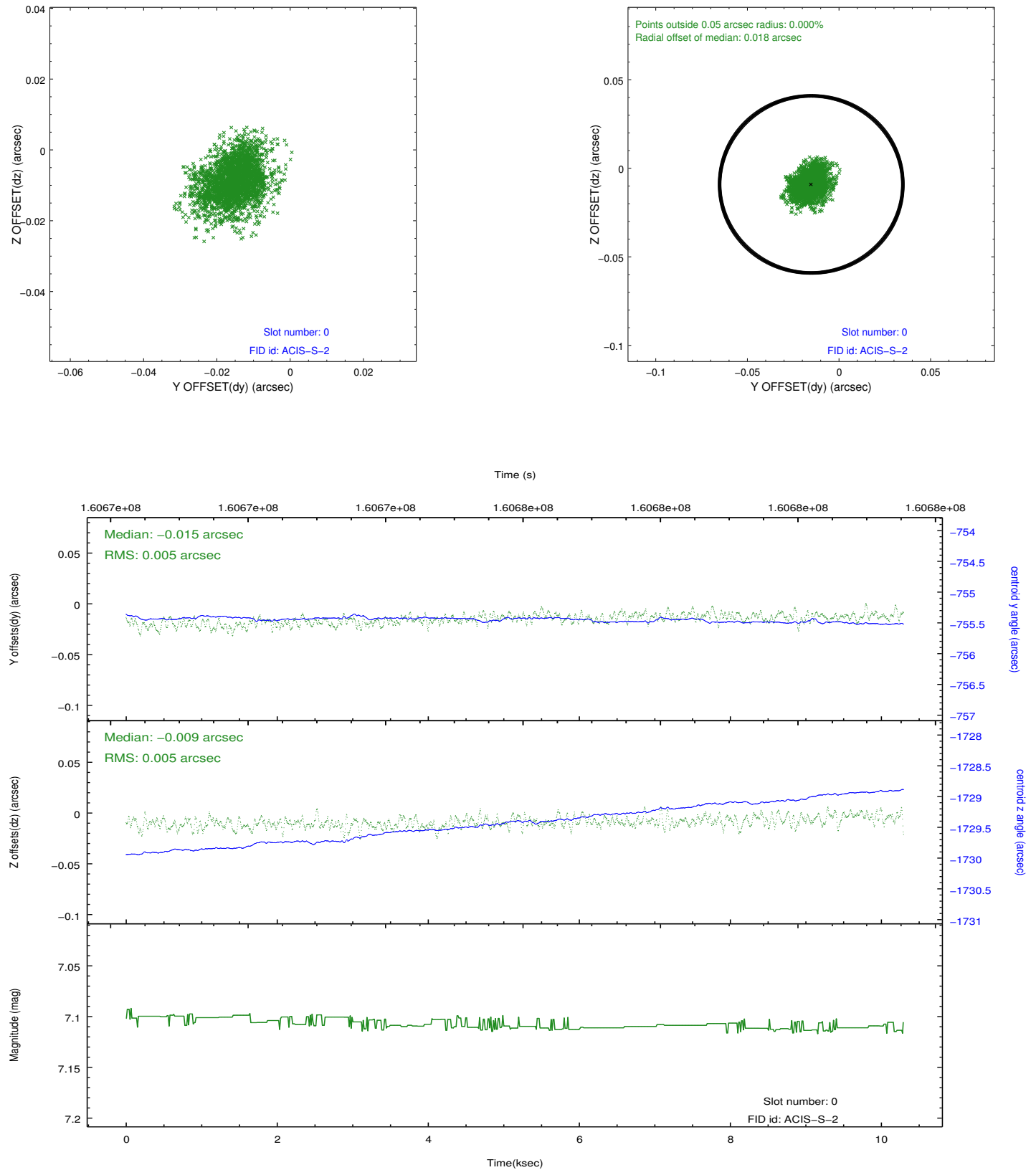


2.4.4 Slot 7

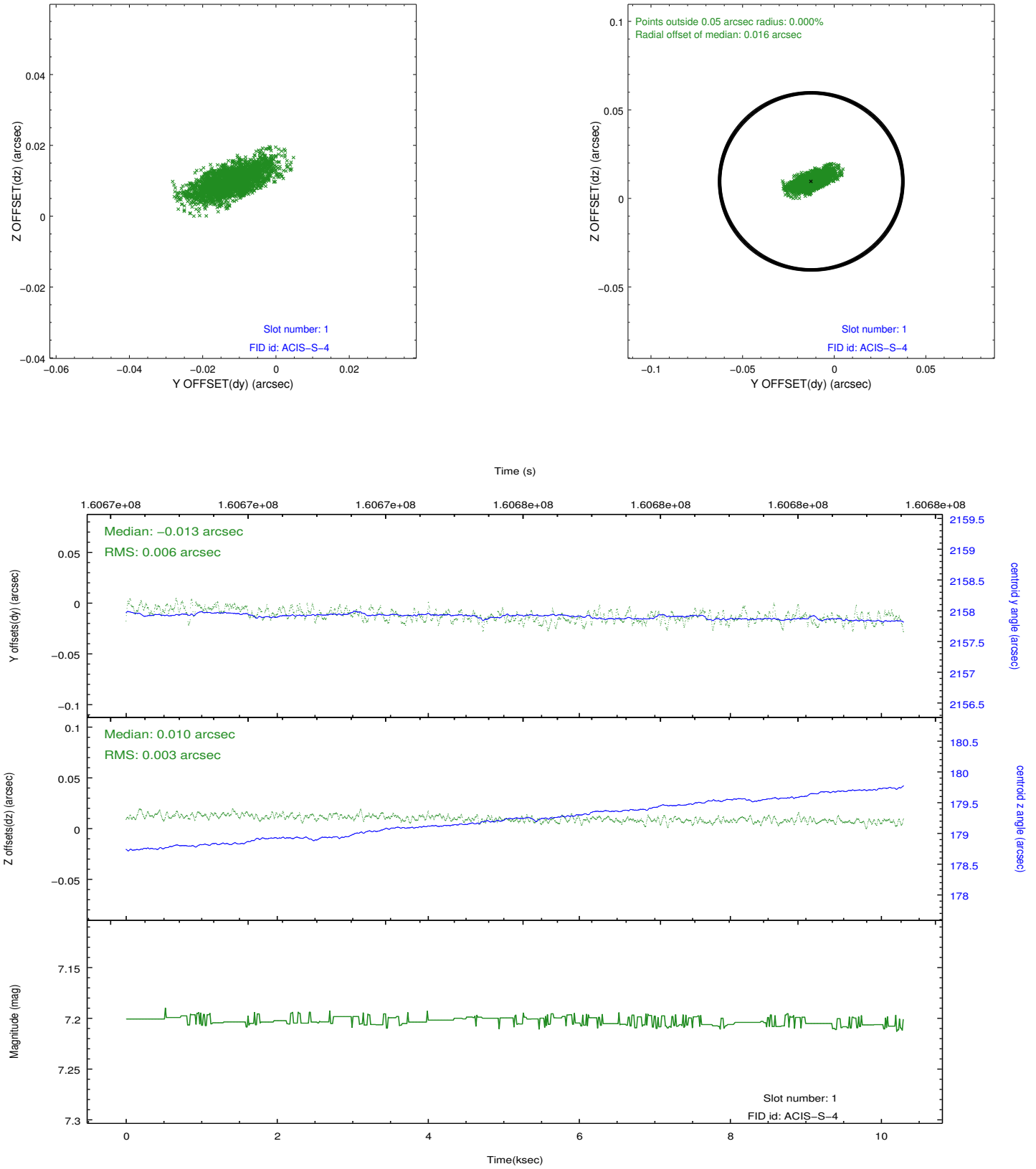


2.5 FID Slots

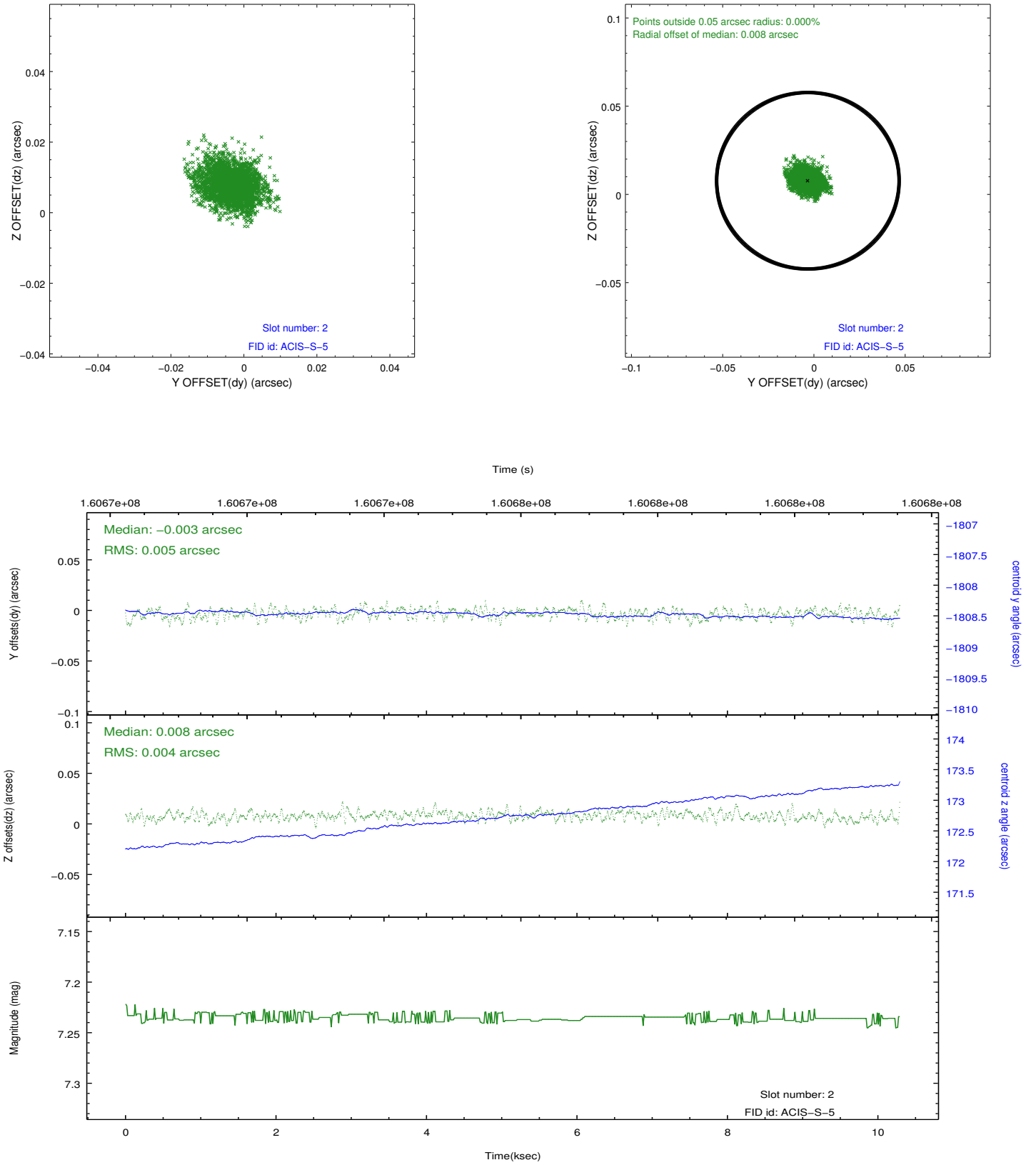
2.5.1 Slot 0



2.5.2 Slot 1



2.5.3 Slot 2



A Summary

A.1 Status

V&V Scientist	Jen Lauer
V&V Date (YYYY-MM-DD)	2012.11.06
V&V Edition	1
V&V Disposition and Status	OK
V&V Charge Time	10.293

A.2 Comments

The guide star in slot 4 was removed from the aspect solution due to poor data quality. The aspect solution is improved by the removal of this guide star from the solution.