

V&V Reference Report

L2 ASCDS Version : 7.6.8

Observation 3924 - L2 Version 003
Chandra X-Ray Center

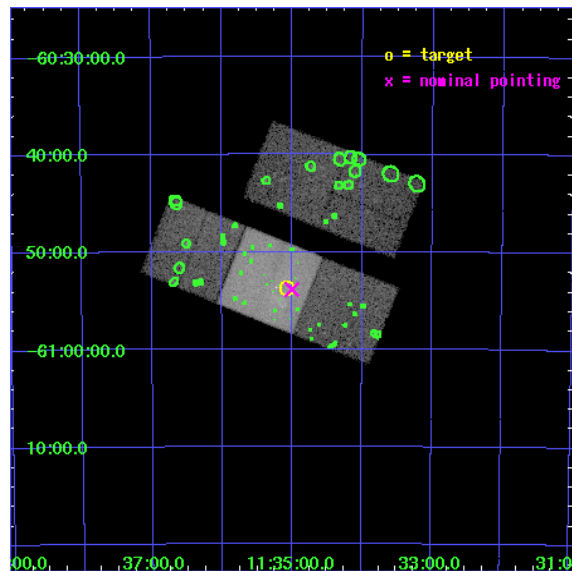
L2 Processing Date : Jul 7 2006

Contents

1	Front	2
2	OBI	3
2.1	OBI	3
2.1.1	Images	3
2.1.2	Bias	3
2.1.3	Parameters	4
2.1.4	Events	4
2.2	Compared Parameters	5
2.3	Aspect	6
2.4	Star Slots	9
2.4.1	Slot 3	9
2.4.2	Slot 4	10
2.4.3	Slot 5	11
2.4.4	Slot 6	12
2.4.5	Slot 7	13
2.5	FID Slots	14
2.5.1	Slot 0	14
2.5.2	Slot 1	15
2.5.3	Slot 2	16
3	Point Sources	17
A	Summary	18
A.1	Status	18
A.2	Comments	18

1 Front

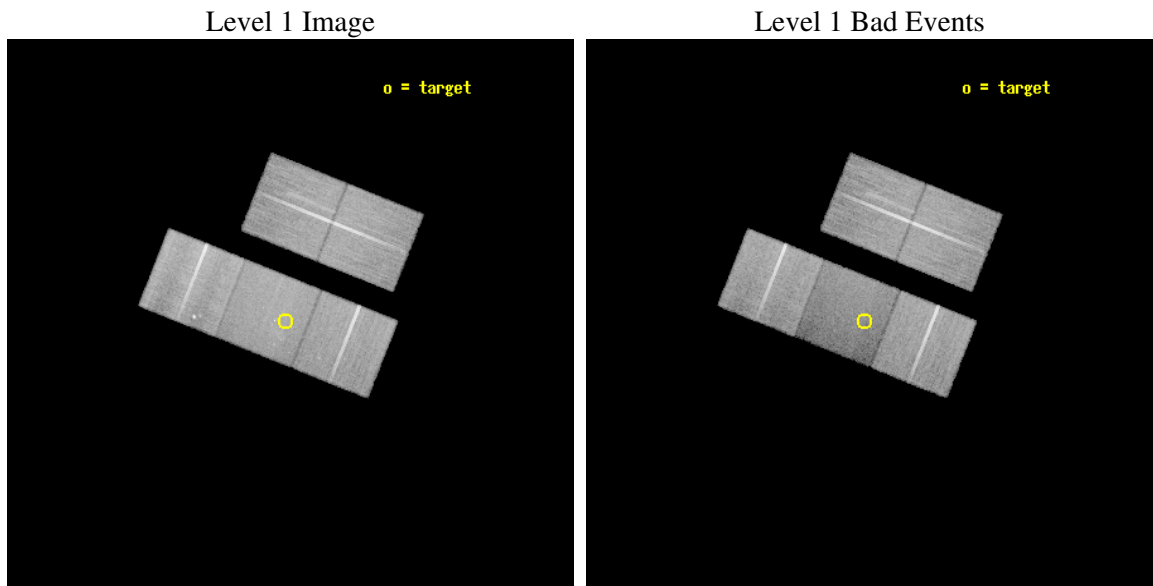
seq_num	500403
obs_id	3924
title	MAKING THE MOST OF REMNANTS WITH CENTRAL OBJECT CANDIDATES
observer	Dr. Eric Gotthelf
object	G293.8+0.6
dtcycle	0
cycle	P
ra_targ	173.77
dec_targ	-60.895831
ra_nom	173.75058161801
dec_nom	-60.897777820518
roll_nom	201.74554996556
revision	4
ontime	36592.23607862
livetime	36114.13157544
ontime2	36595.377028883
ontime3	36595.377028883
ontime6	36598.517999113
ontime7	36592.23607862
ontime8	36592.236008823
l2events	164508



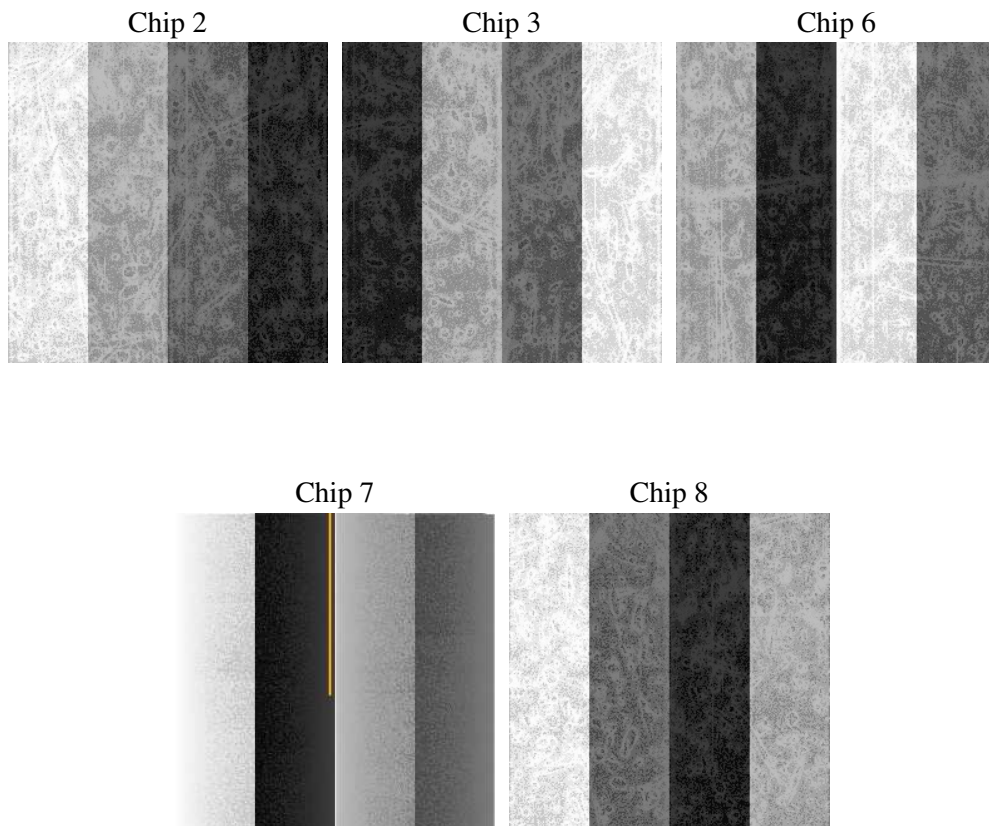
2 OBI

2.1 OBI

2.1.1 Images



2.1.2 Bias



2.1.3 Parameters

obi_num	0
ascdsver	7.6.8
caldbver	3.2.2
date	2006-07-07T14:09:07
revision	4

sched_exp_time	36500.000000
ontime	36595.811905563
ontime2	36598.952855825
ontime3	36598.952855825
ontime6	36602.093826056
ontime7	36595.811905563
ontime8	36595.811835766
llevents	986841

2.1.4 Events

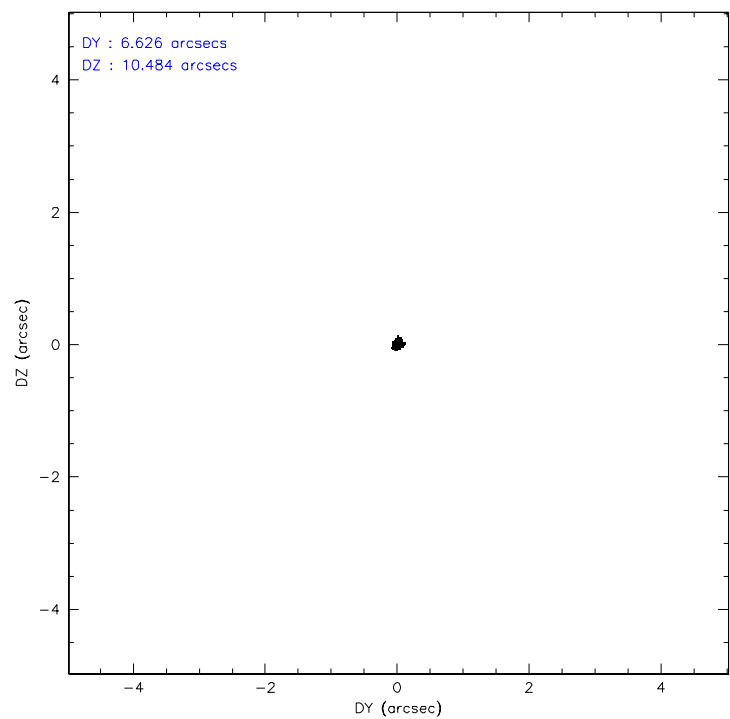
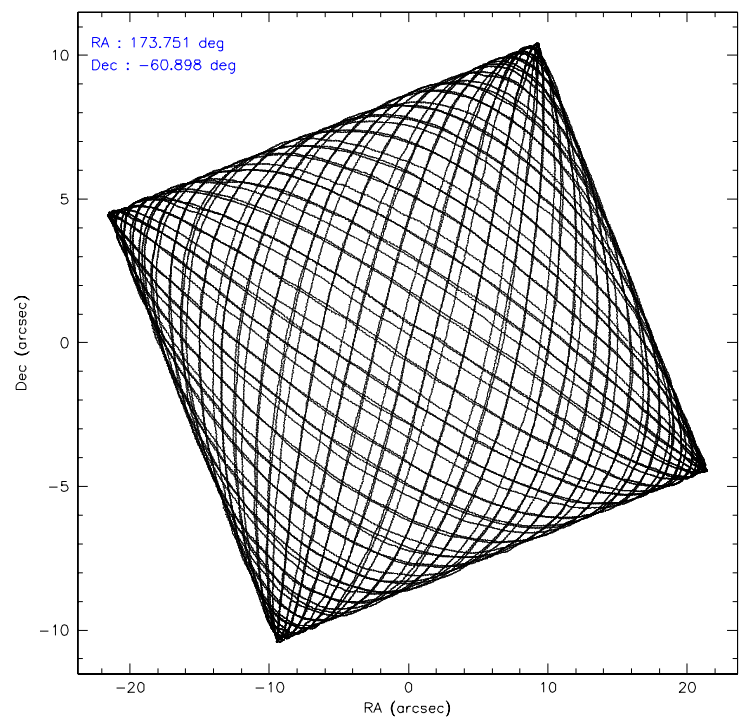
	ccd 2	ccd 3	ccd 6	ccd 7	ccd 8
level 1 events	193627	187049	190168	187458	228539
rejected events	174601	168895	167405	93704	174205
rejected %	90%	90%	88%	49%	76%

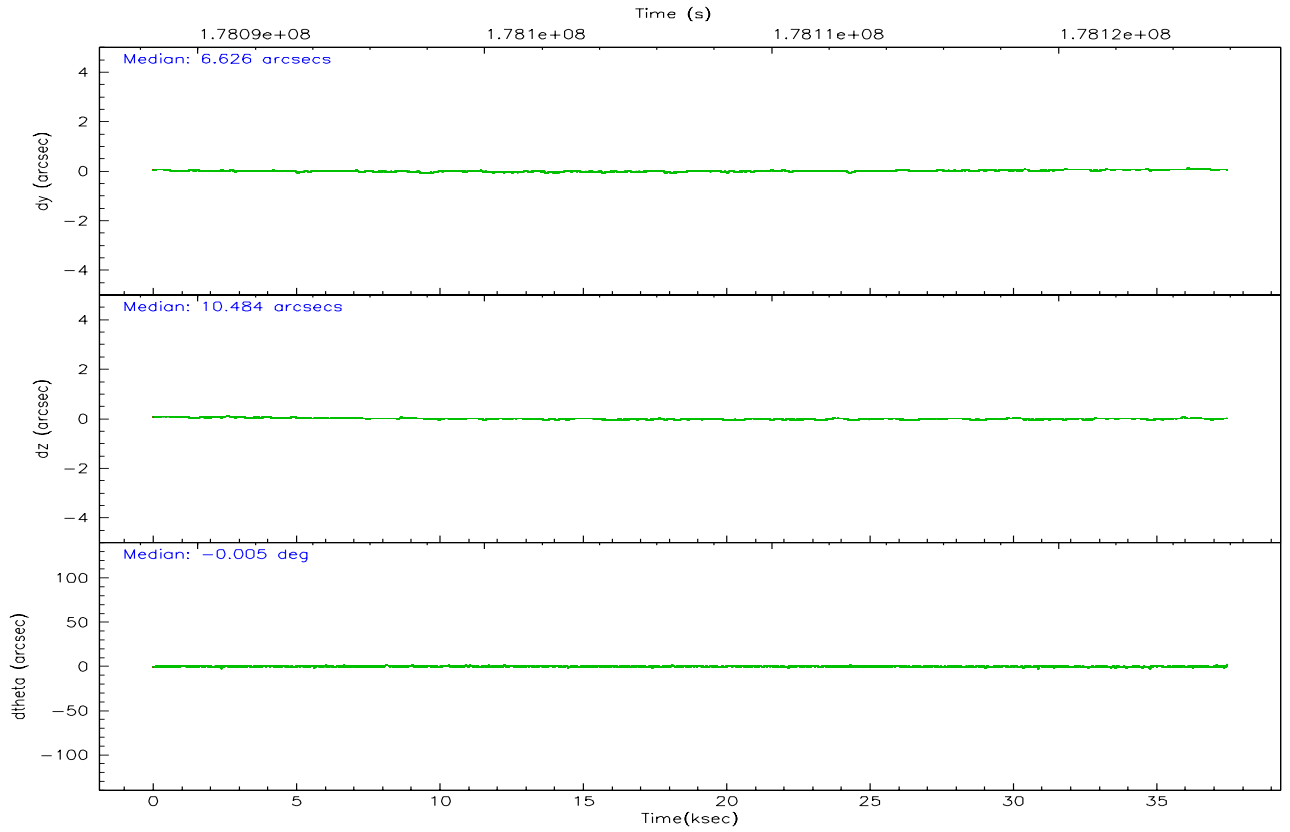
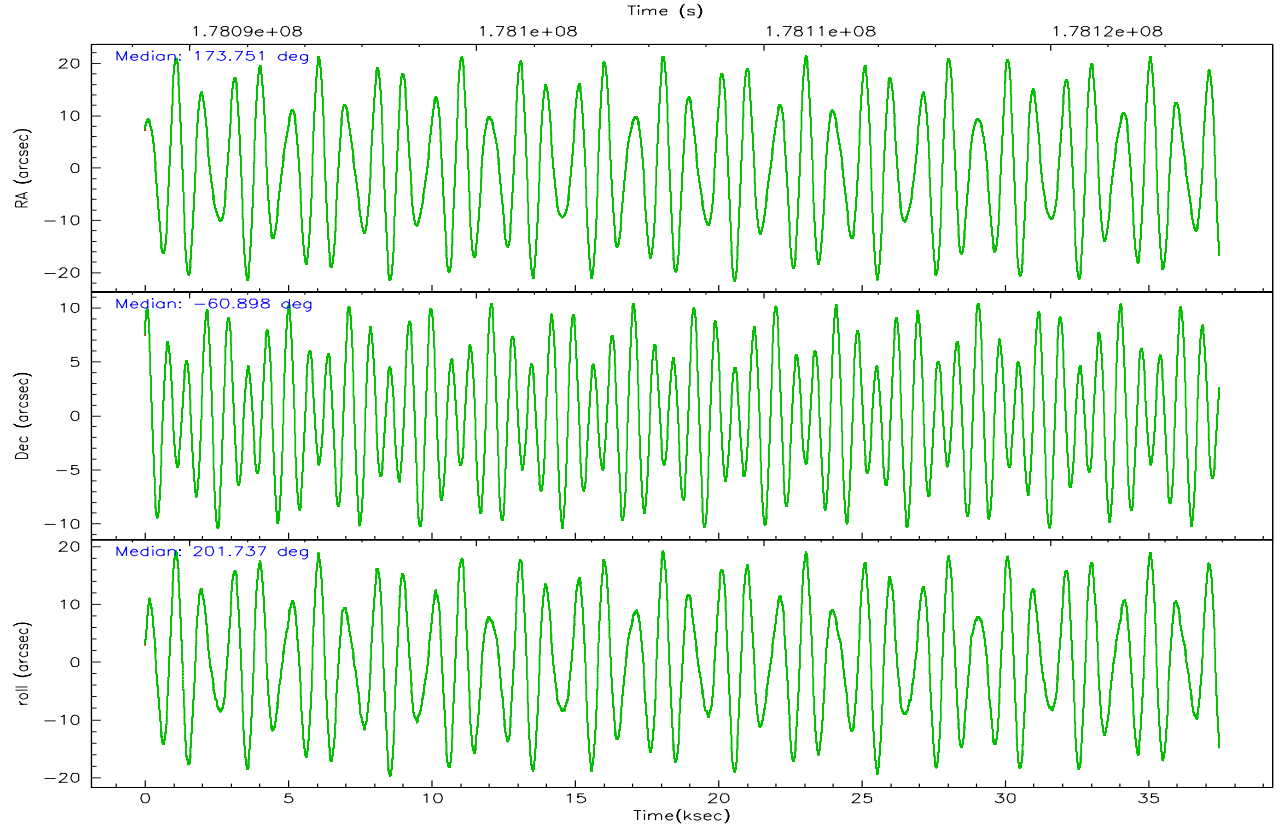
	ccd 2	ccd 3	ccd 6	ccd 7	ccd 8
grade 0 events	7712	7284	10380	8857	17304
	3%	3%	5%	4%	7%
grade 1 events	83	97	102	111	153
	0%	0%	0%	0%	0%
grade 2 events	4271	3638	4208	23994	11876
	2%	1%	2%	12%	5%
grade 3 events	2008	2125	2189	6431	5693
	1%	1%	1%	3%	2%
grade 4 events	2007	1905	2174	6250	5358
	1%	1%	1%	3%	2%
grade 5 events	4951	6020	6215	13914	8984
	2%	3%	3%	7%	3%
grade 6 events	3030	3202	3813	48228	14106
	1%	1%	2%	25%	6%
grade 7 events	169565	162778	161087	79673	165065
	87%	87%	84%	42%	72%

2.2 Compared Parameters

Parameter	Planned	Actual	Parameter	Planned	Actual
Instrument	ACIS	ACIS	Obspar format version number	6	6
Detector	ACIS-23678	ACIS-23678	Obspar file type	PREDICTED	ACTUAL
Grating	NONE	NONE	Obspar update status	NONE	UPDATED
Data mode	VFAINT	VFAINT	On-chip summing requested	N	N
Observation mode	POINTING	POINTING	Subarray requested	NONE	NONE
Pointing RA	173.784572	173.7505816180147	Alternating exposures requested	N	N
Pointing Dec	-60.876168	-60.89777782051797	Primary exposure time	0.000000	3.1
Pointing Roll	201.618620	201.745549965559			
SIM focus pos (mm)	-0.684267	-0.6828225247311905			
SIM defocus (mm)	0	0.001444936568705701			
SIM translation stage pos (mm)	-190.132523	-190.1425803651734			
SIM translation stage offset (mm)	0	0.01005778216563158			
Observation start time	178089390.184000	178088036.13917			
Observation start date	2003-08-24T05:15:26	2003-08-24T04:53:56			
Observation end time	178125890.184000	178126479.79082			
Observation end date	2003-08-24T15:23:46	2003-08-24T15:34:39			
Read mode	TIMED	TIMED			

2.3 Aspect



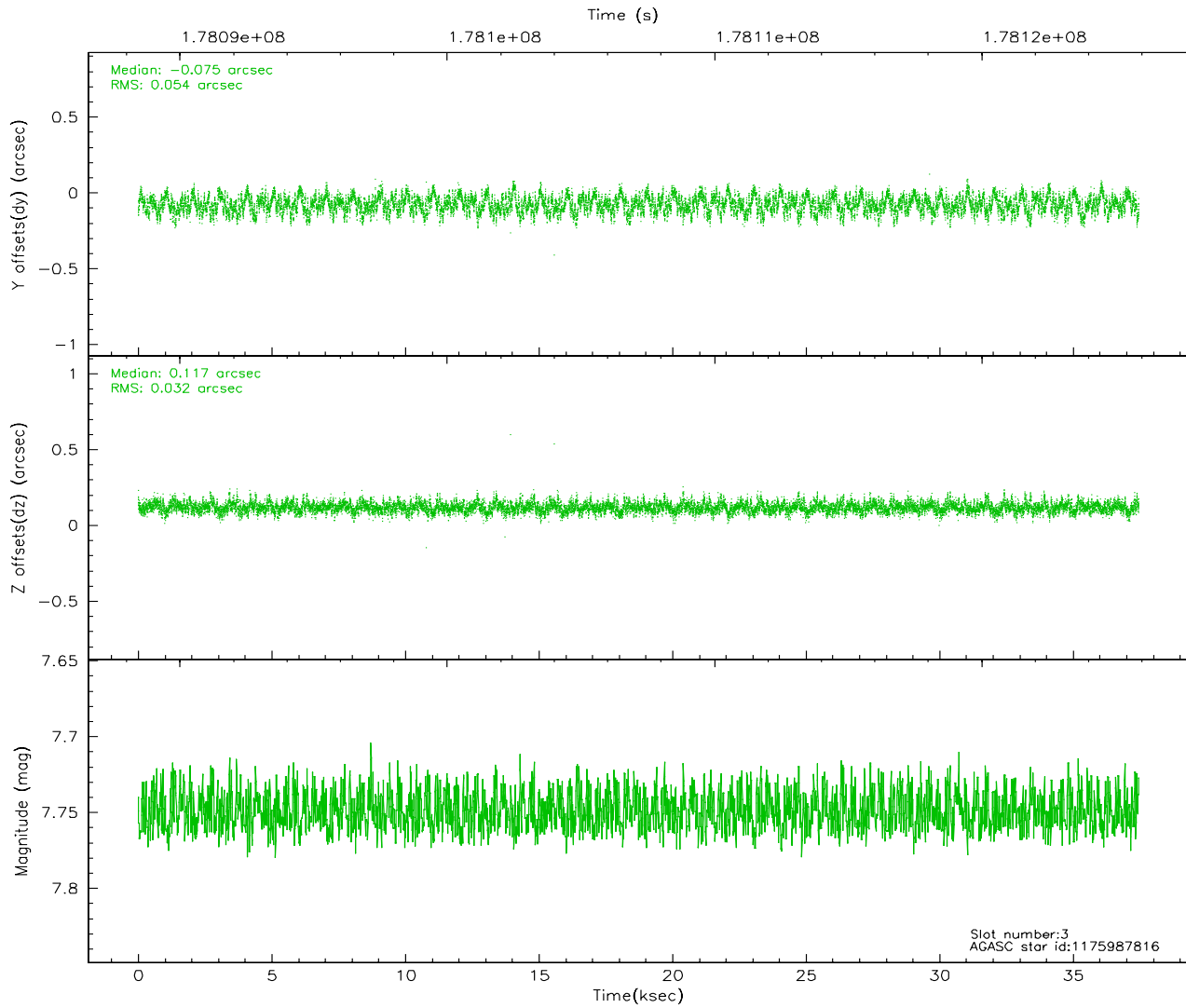
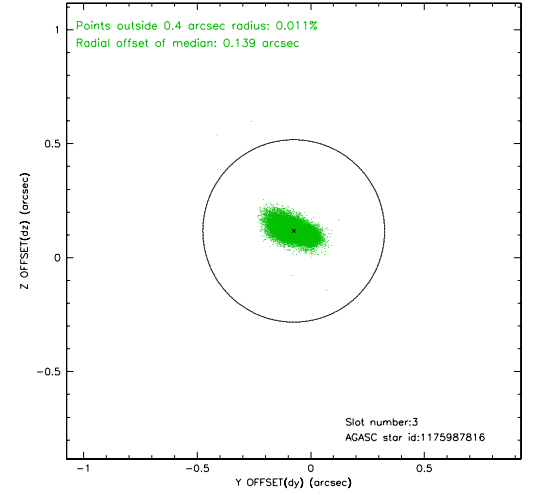
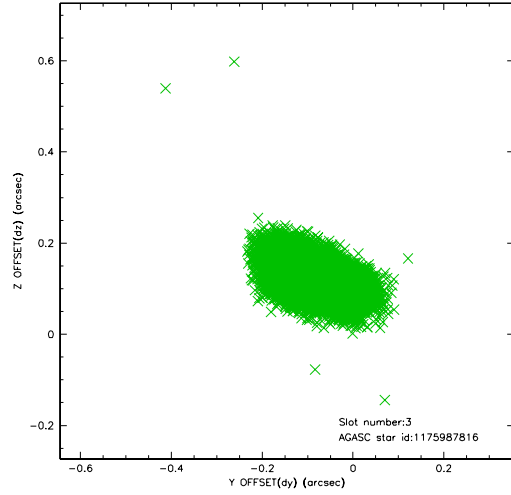


Slot Statistics

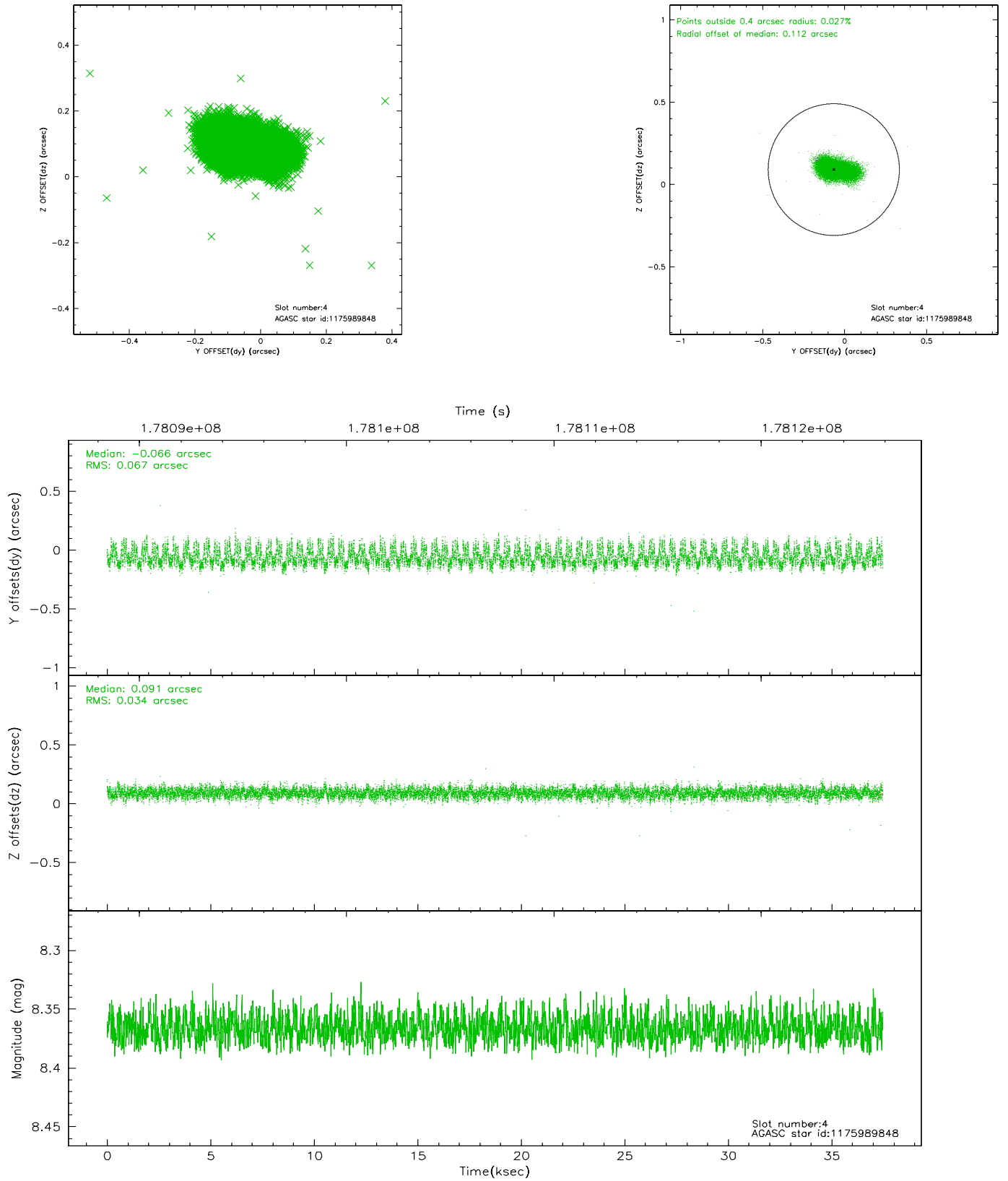
slot	status	id	mag	n_pts	med_dy	med_dz	dr1	dr2	ra	dec	mean_y	mean_z
0	FID	ACIS-S-2	7.10	9134	-0.031	0.008	0.007	0.011	0.000000	0.000000	-759.37	-1731.70
1	FID	ACIS-S-5	7.23	9134	0.006	-0.020	0.007	0.011	0.000000	0.000000	-1812.49	170.20
2	FID	ACIS-S-6	7.34	9135	-0.001	0.019	0.006	0.011	0.000000	0.000000	402.20	814.21
3	GUIDE	1175987816	7.75	18269	-0.075	0.117	0.065	0.112	175.028658	-61.185744	-1588.74	1850.54
4	GUIDE	1175989848	8.37	18267	-0.066	0.091	0.078	0.135	174.871596	-61.162609	-1369.37	1668.82
5	GUIDE	1175992576	8.52	18265	0.159	-0.122	0.066	0.110	172.218957	-60.664058	2298.19	-1696.06
6	GUIDE	1175983312	8.97	18263	0.124	-0.130	0.074	0.119	172.564937	-60.527142	1553.39	-1945.12
7	GUIDE	1175981336	7.28	18263	-0.149	0.044	0.059	0.096	175.260323	-60.923305	-2326.70	1135.73

2.4 Star Slots

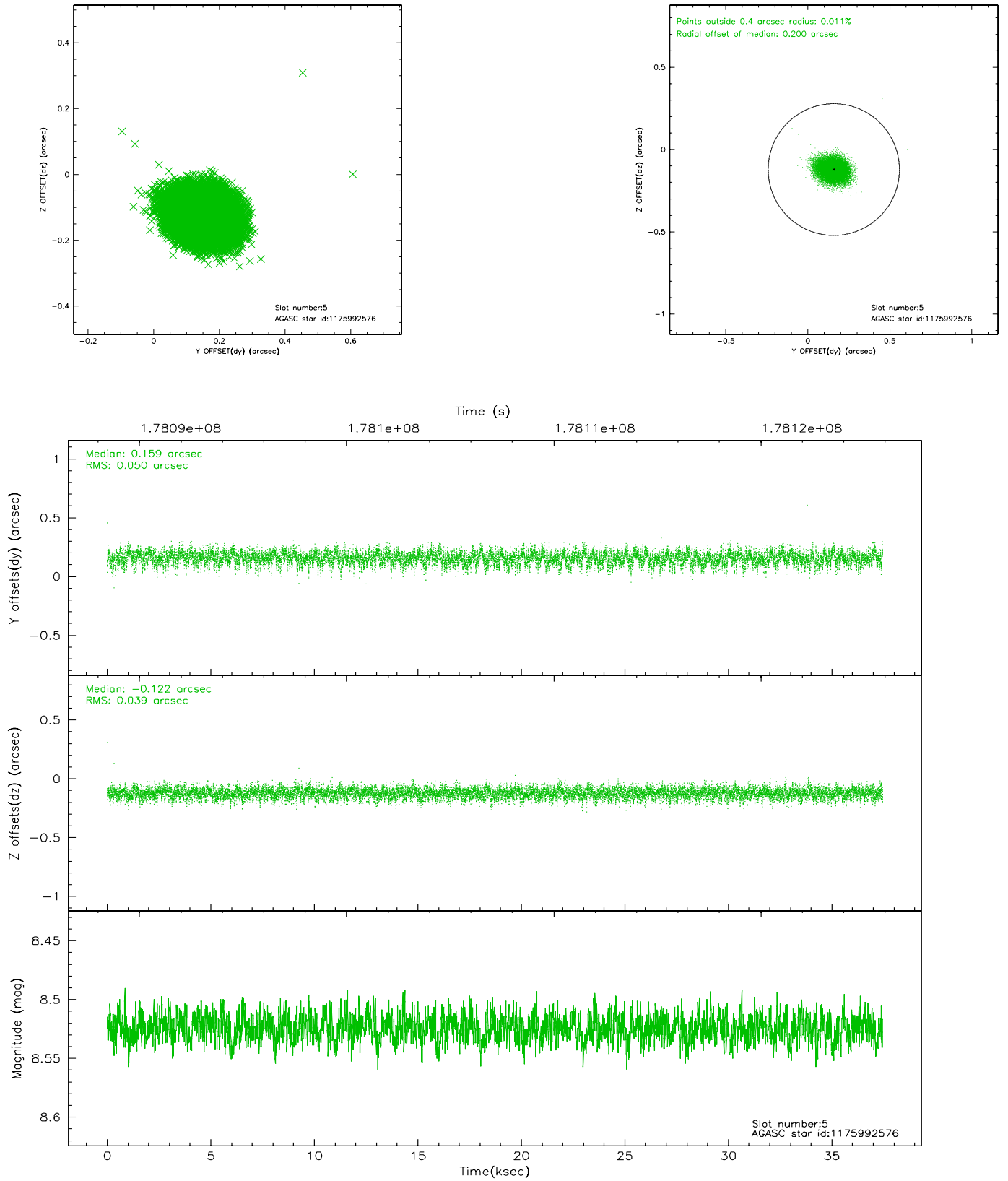
2.4.1 Slot 3



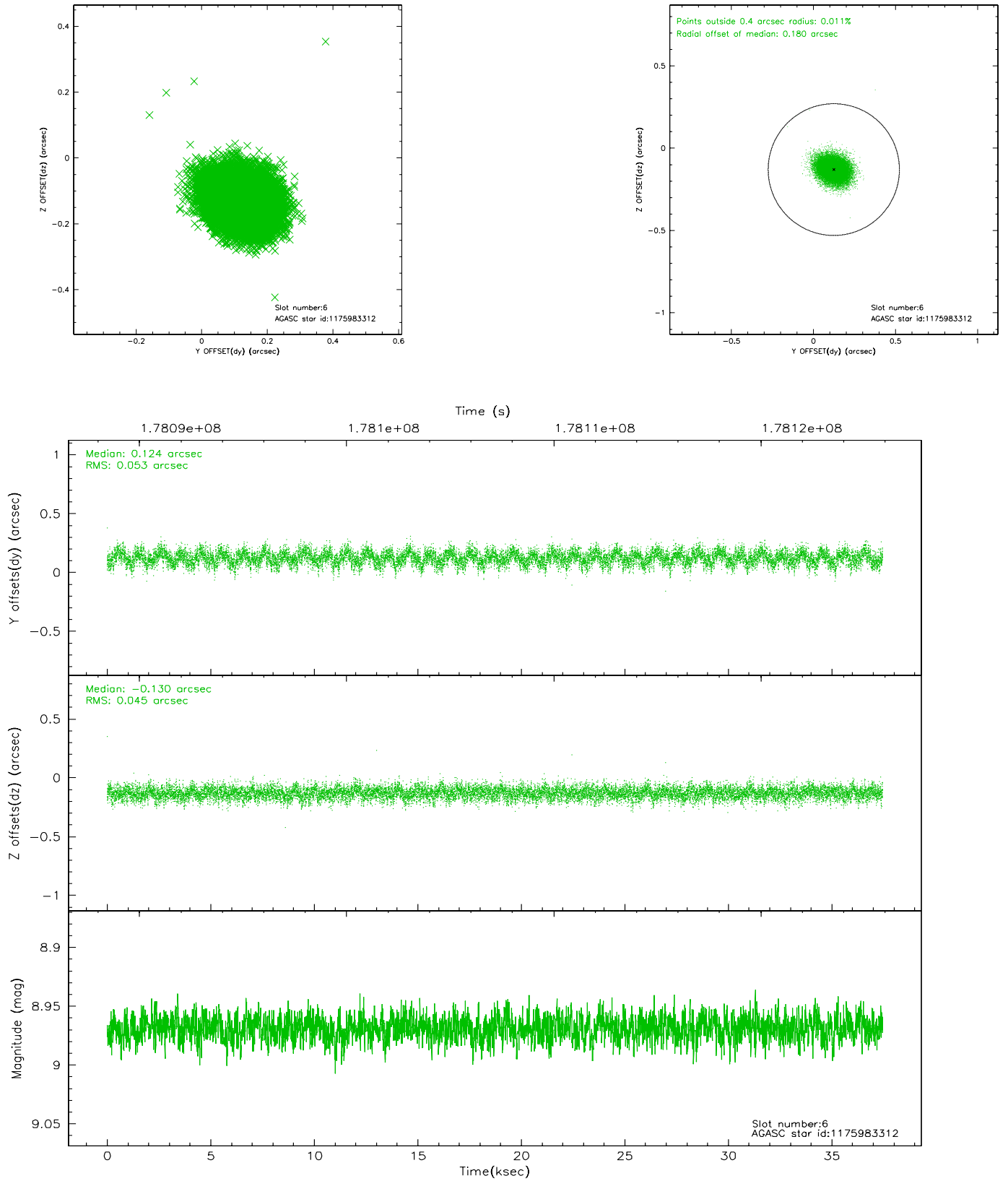
2.4.2 Slot 4



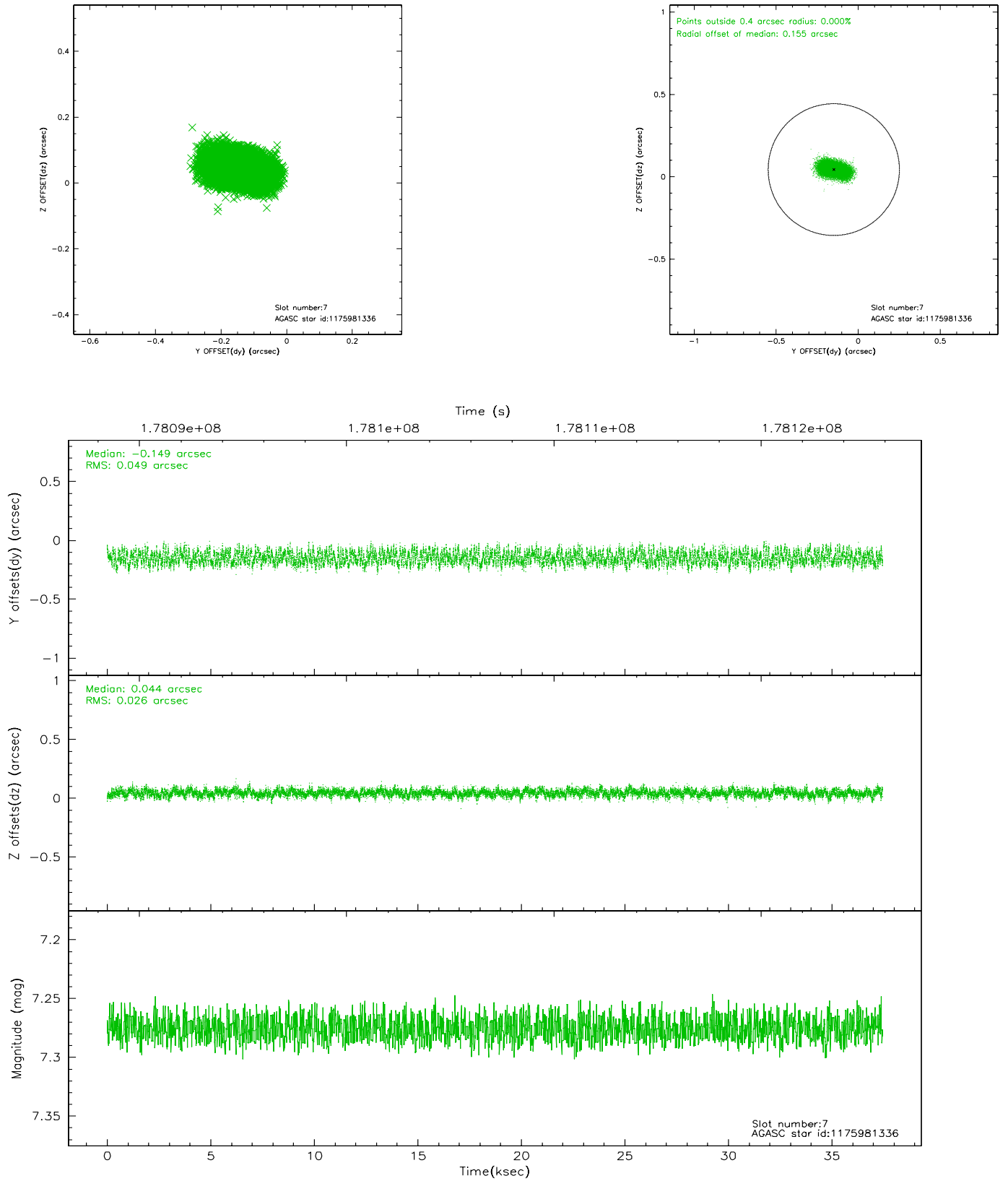
2.4.3 Slot 5



2.4.4 Slot 6

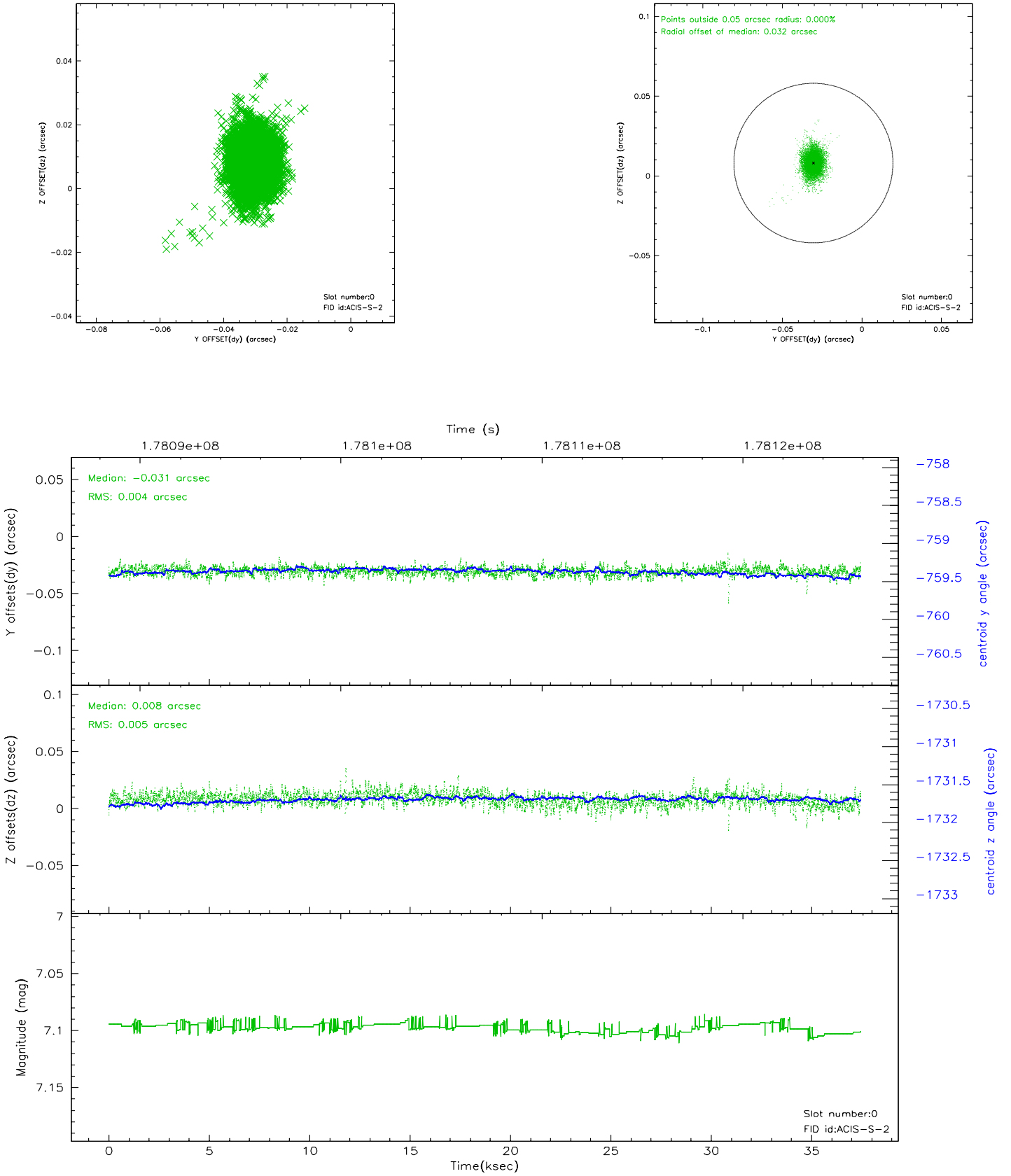


2.4.5 Slot 7

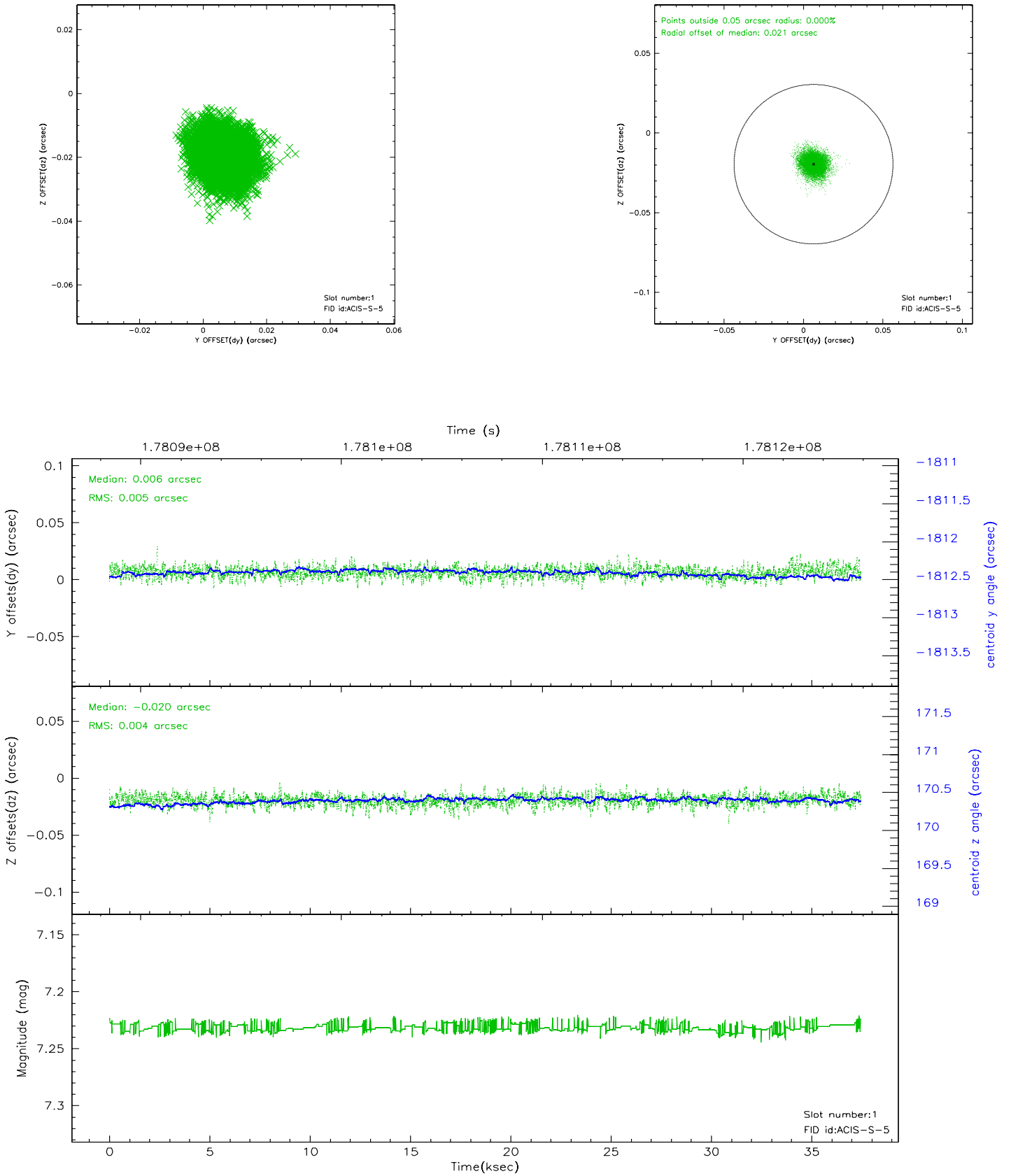


2.5 FID Slots

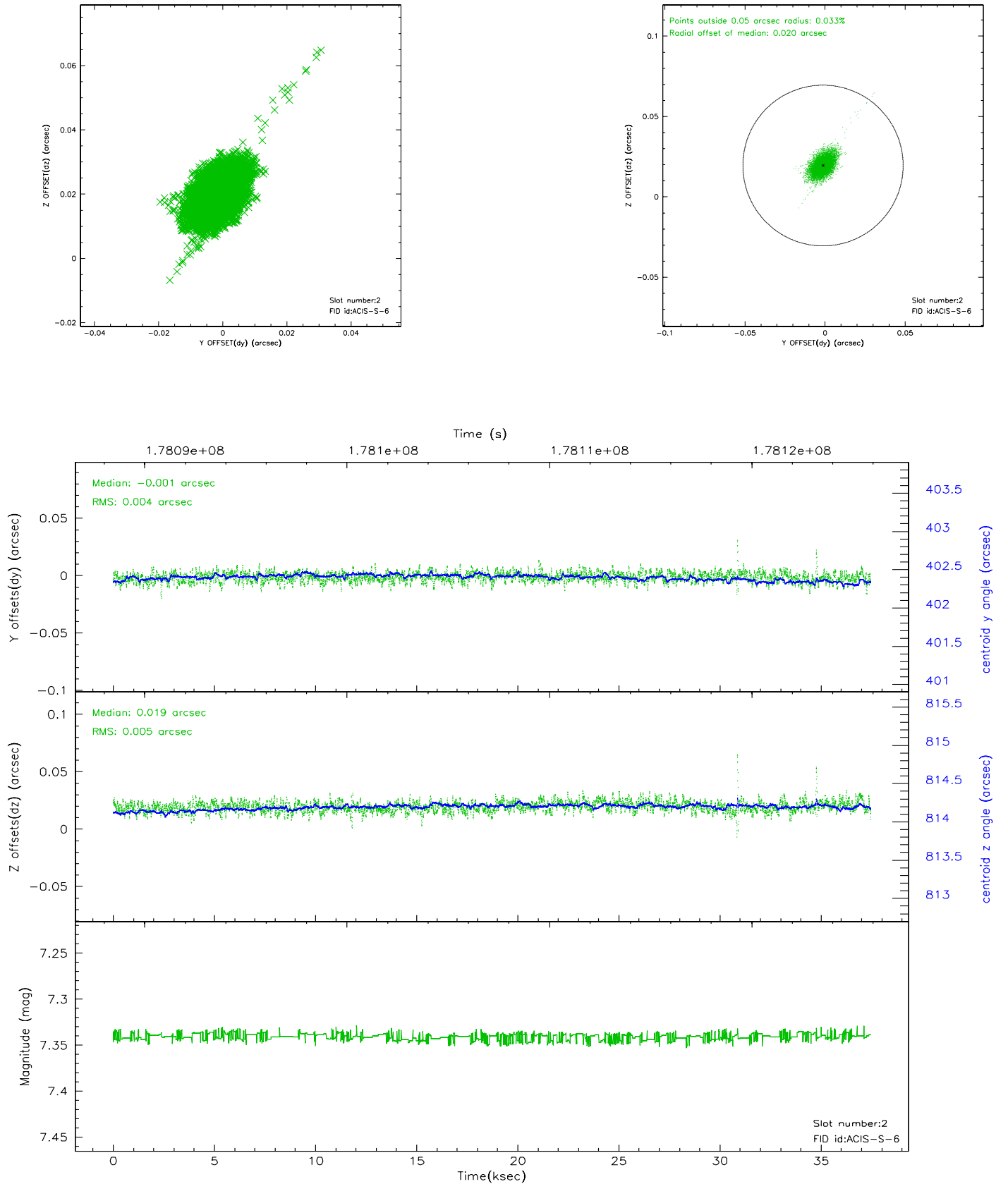
2.5.1 Slot 0



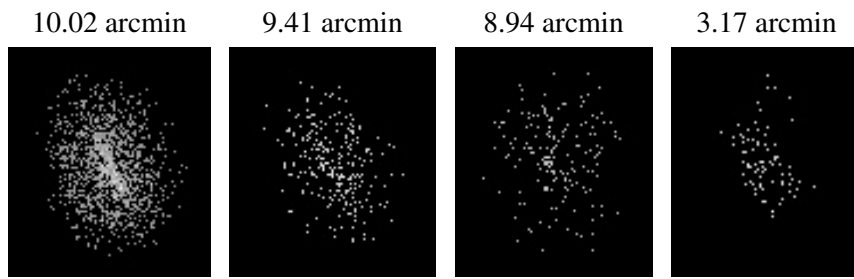
2.5.2 Slot 1



2.5.3 Slot 2



3 Point Sources



A Summary

A.1 Status

V&V Scientist	Jen Lauer
V&V Date (YYYY-MM-DD)	2006.07.07
V&V Edition	1
V&V Disposition and Status	OK
V&V Charge Time	36.592

A.2 Comments