

V&V Reference Report

L2 ASCDS Version : 8.4.5

Observation 3734 - L2 Version 4
Chandra X-Ray Center

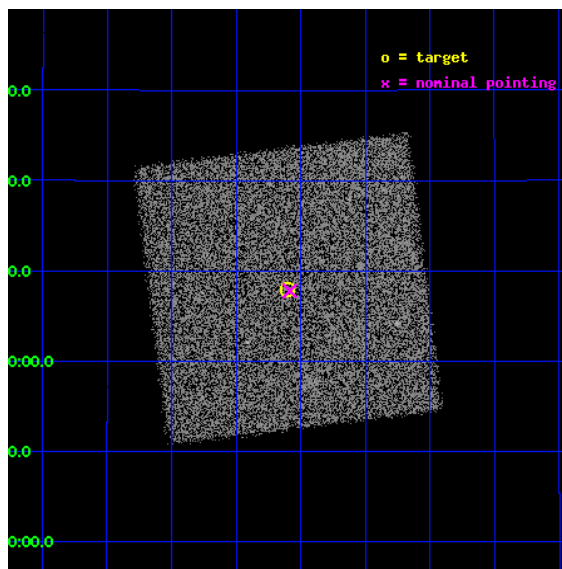
L2 Processing Date : Oct 29 2012

Contents

1	Front	2
2	OBI	3
2.1	OBI	3
2.1.1	Images	3
2.1.2	Parameters	4
2.1.3	Events	4
2.2	Compared Parameters	5
2.3	Aspect	6
2.4	Star Slots	9
2.4.1	Slot 3	9
2.4.2	Slot 4	10
2.4.3	Slot 5	11
2.4.4	Slot 6	12
2.4.5	Slot 7	13
2.5	FID Slots	14
2.5.1	Slot 0	14
2.5.2	Slot 1	15
2.5.3	Slot 2	16
A	Summary	17
A.1	Status	17
A.2	Comments	17

1 Front

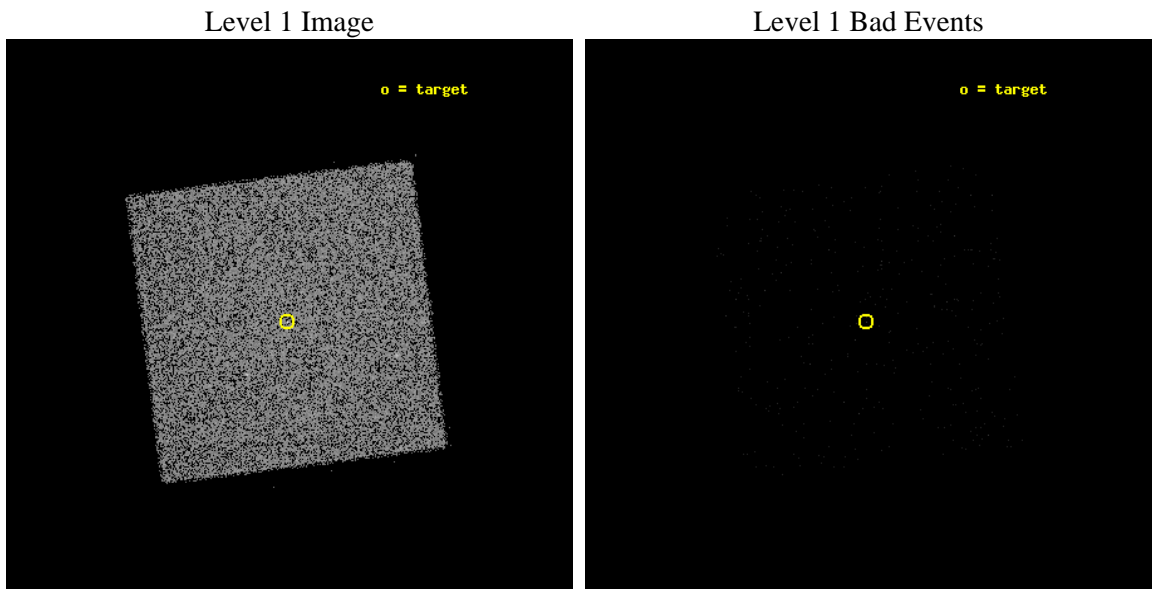
seq_num	200204	Sequence number
obs_id	3734	Observation id
title	X-RAY ACTIVITY IN M-TYPE GIANTS	Proposal title
observer	Dr Matthias Huensch	Principal investigator
object	HR 5512	Source name
ra_targ	221.525	Observer's specified target RA [deg]
dec_targ	15.131667	Observer's specified target Dec [deg]
ra_nom	221.52106537232	Nominal RA [deg]
dec_nom	15.129926944566	Nominal Dec [deg]
roll_nom	217.85782778924	Nominal Roll [deg]
revision	4	Processing version of data
ontime	1793.7500760853	[s]
livetime	1784.8262628538	Ontime multiplied by DTCOR
l2events	46385	Number of level 2 events



2 OBI

2.1 OBI

2.1.1 Images



2.1.2 Parameters

obi_num	1	Obi number	sched_exp_time	1900.000000	[s] Scheduled observation exposure time
ascdsver	8.4.5	Processing system revision	ontime	1793.7500760853	[s]
caldbver	4.5.2	 	l1events	102617	Number of level 1 events
date	2012-10-29T04:24:16	Date and time of file creation			
revision	4	Processing version of data			

2.1.3 Events

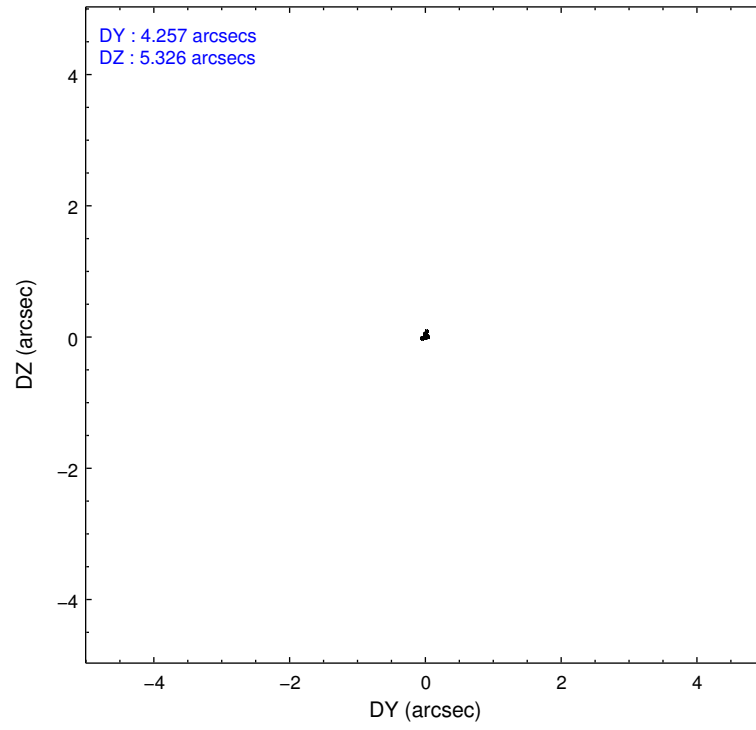
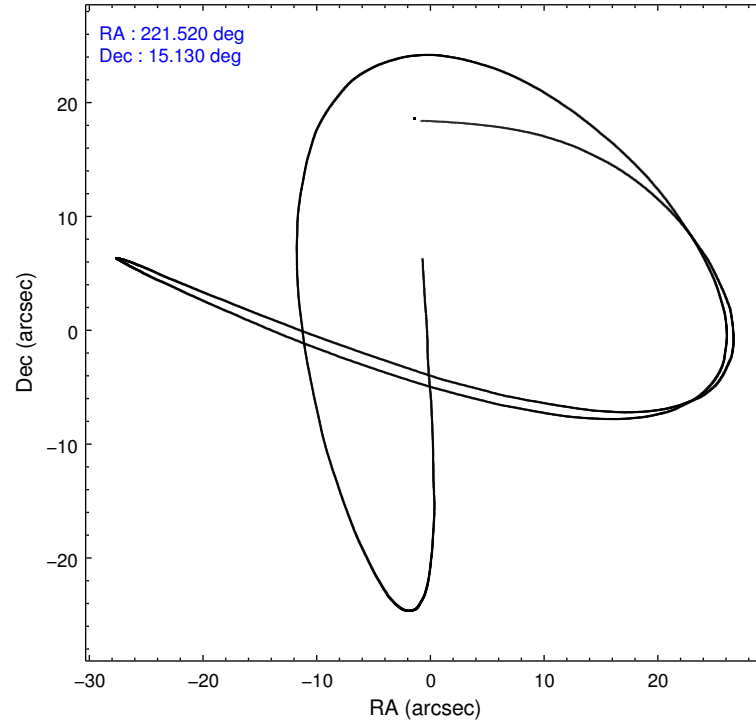
Level 1 Events

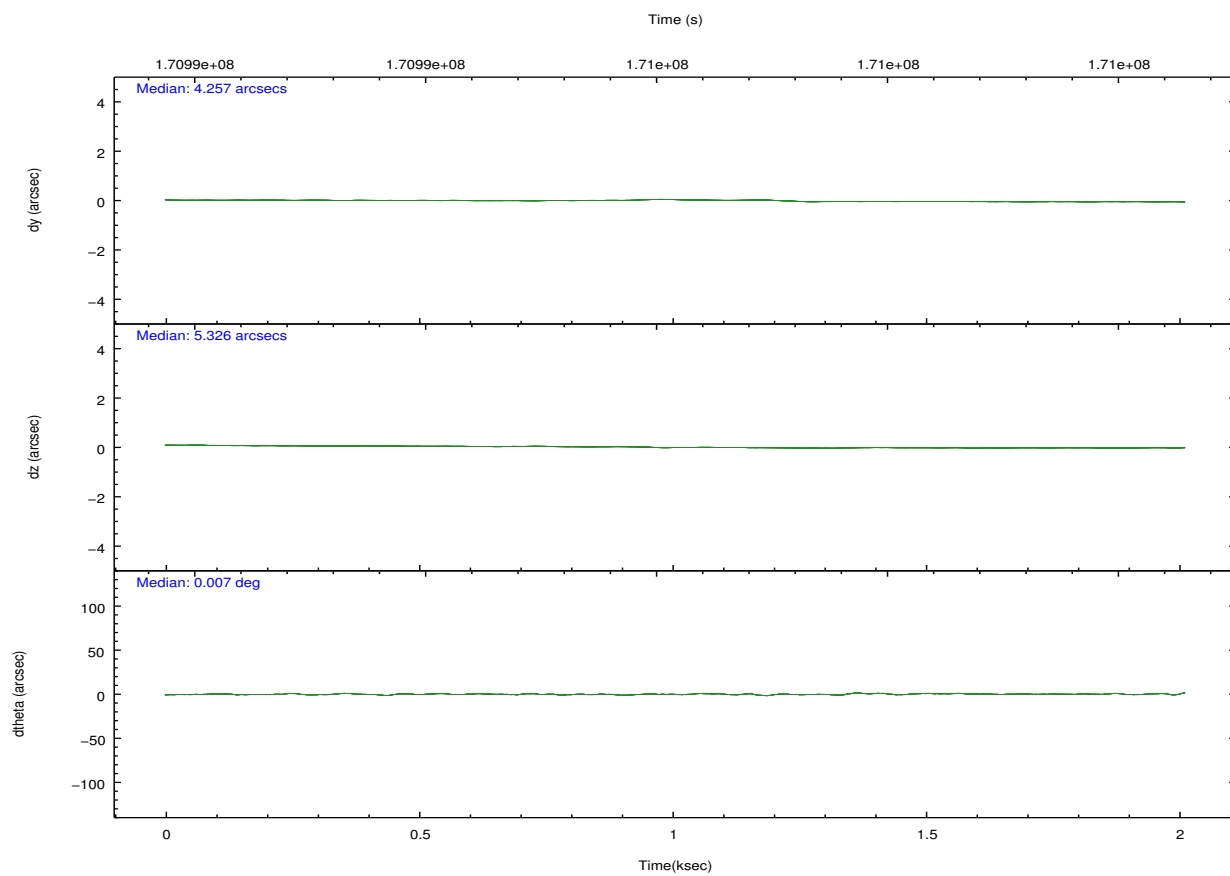
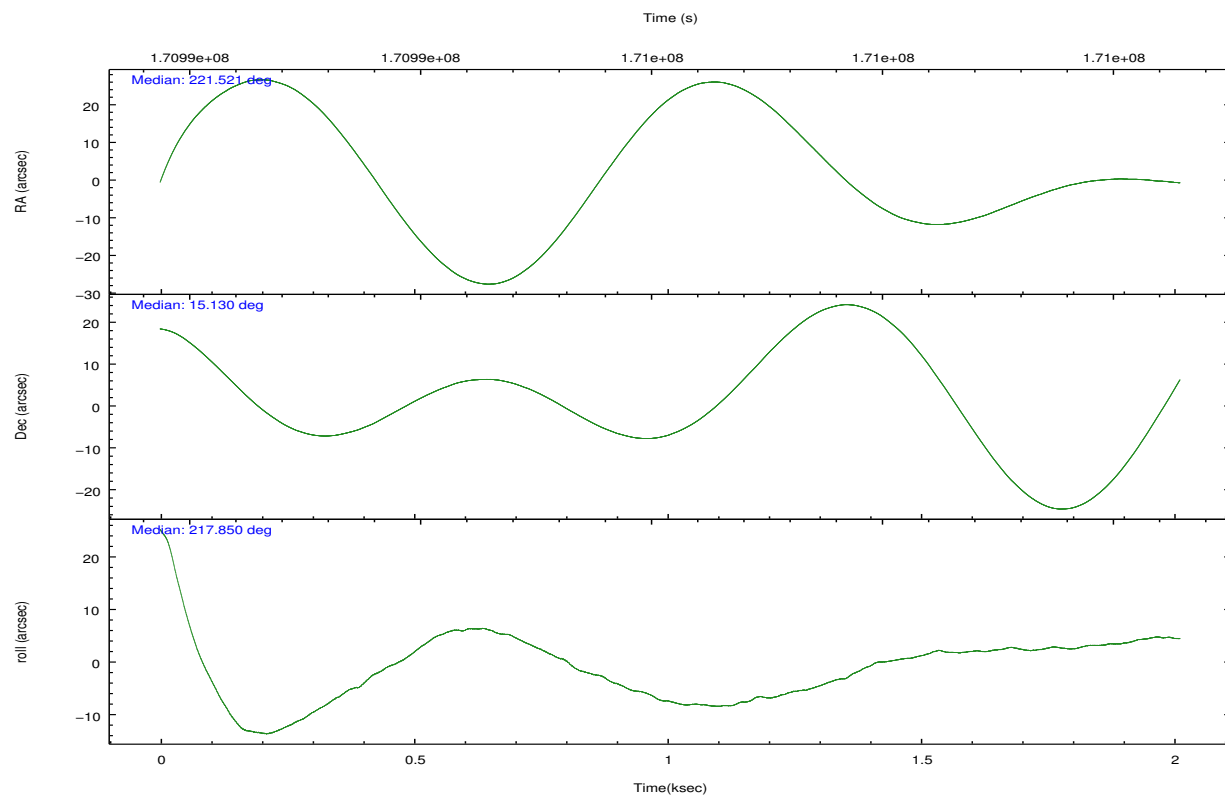
	segment 0
level 1 events	102617
rejected events	34025
rejected %	33%

2.2 Compared Parameters

Parameter	Planned	Actual	Parameter	Planned	Actual
Instrument	HRC	HRC	Obspar format version number	7	7
Detector	HRC-I	HRC-I	Obspar file type	PREDICTED	ACTUAL
Grating	NONE	NONE	Obspar update status	NONE	UPDATED
Data mode	OBSERVING	OBSERVING			
Observation mode	POINTING	POINTING			
[deg] Pointing RA	221.530815	221.521065372315			
[deg] Pointing Dec	15.155917	15.12992694456572			
[deg] Pointing Roll	217.950644	217.8578277892366			
[mm] SIM focus pos	-1.040293	-1.038866356238299			
[mm] SIM defocus	0	0.001426264420575141			
[mm] SIM translation stage pos	126.985494	126.9829799899862			
[mm] SIM translation stage offset	0	0.002508901615314585			
[s] Observation start time (MET)	170994142.184000	170993208.26192			
Observation start date	2003-06-03T02:21:18	2003-06-03T02:06:48			
[s] Observation end time (MET)	170996042.184000	170996993.58708			
Observation end date	2003-06-03T02:52:58	2003-06-03T03:09:53			

2.3 Aspect



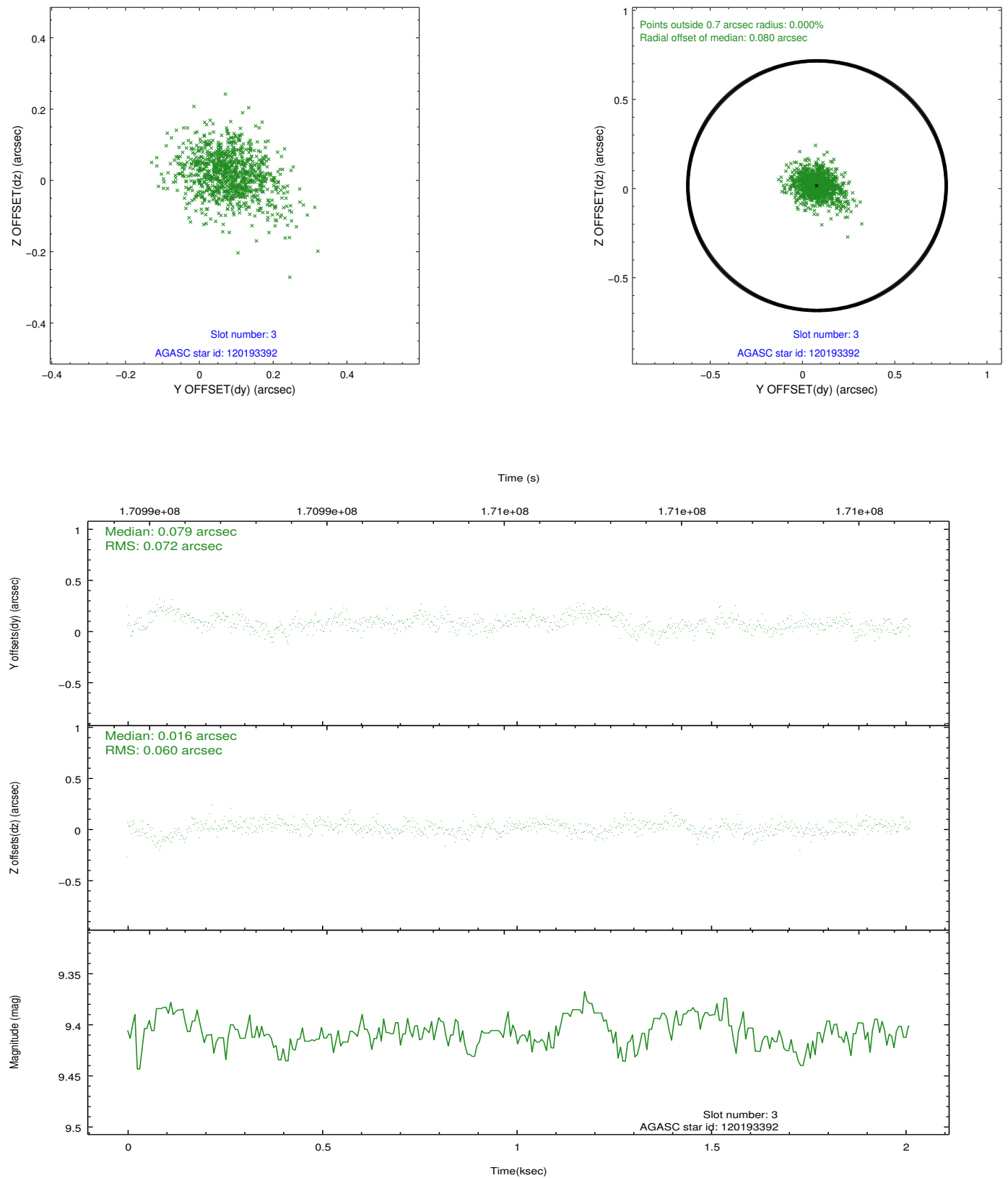


Slot Statistics

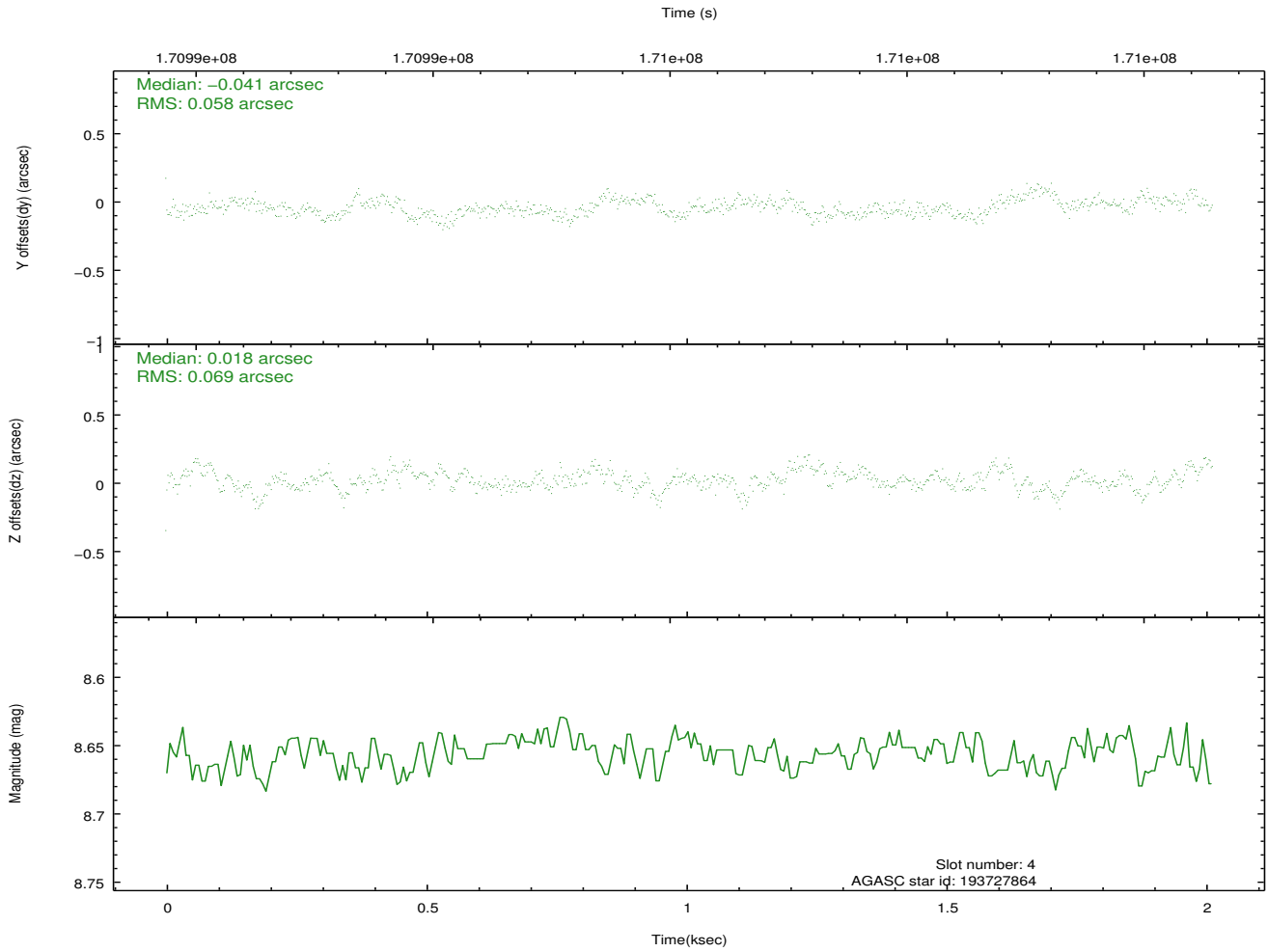
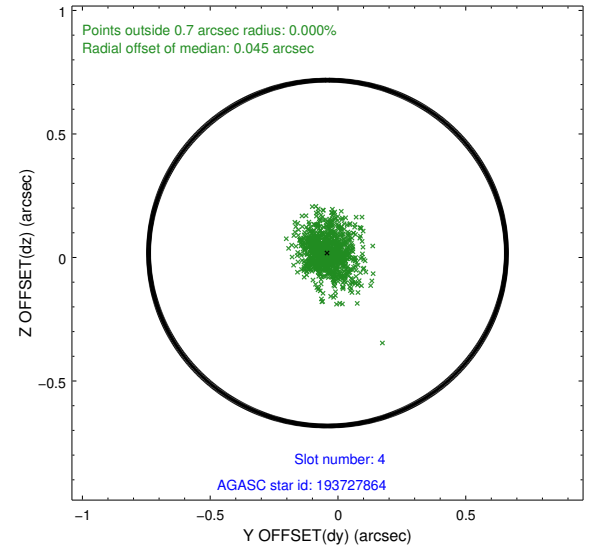
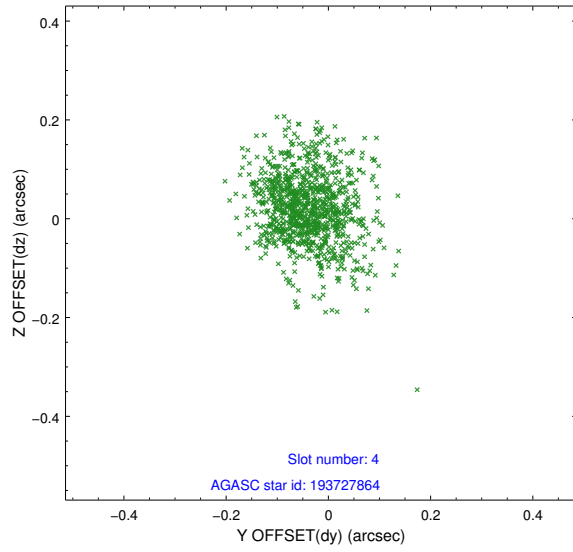
slot	status	id	mag	n_pts	med_dy	med_dz	dr1	dr2	ra	dec	mean_y	mean_z
0	FID	HRC-I-1	6.98	491	-0.010	0.004	0.008	0.013	0.000000	0.000000	-759.72	-1293.16
1	FID	HRC-I-2	7.03	491	0.113	-0.065	0.006	0.012	0.000000	0.000000	851.49	-1297.38
2	FID	HRC-I-3	7.07	492	0.015	-0.028	0.006	0.012	0.000000	0.000000	-1186.53	1008.72
3	GUIDE	120193392	9.41	982	0.079	0.016	0.096	0.169	221.172589	14.692823	2007.69	544.72
4	GUIDE	193727864	8.66	983	-0.041	0.018	0.093	0.164	221.624672	15.518983	-1058.98	-832.30
5	GUIDE	120193752	9.05	983	-0.061	0.049	0.099	0.153	221.853690	14.590356	362.59	2293.58
6	GUIDE	193593904	9.20	981	0.120	-0.075	0.109	0.183	220.676210	15.367467	1867.53	-2429.30
7	GUIDE	193593752	8.77	982	-0.099	-0.017	0.096	0.146	221.299595	15.807237	-808.99	-2346.77

2.4 Star Slots

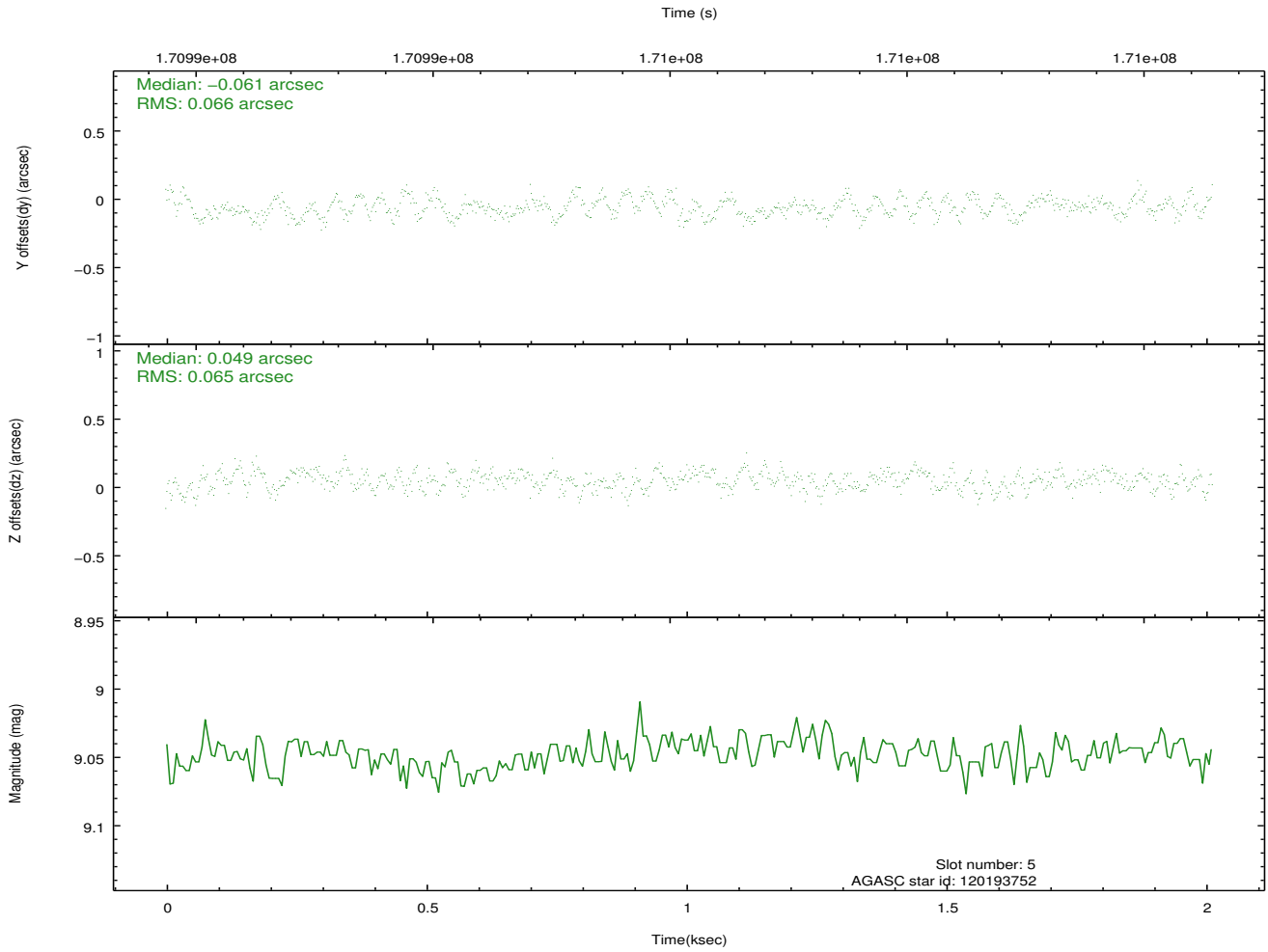
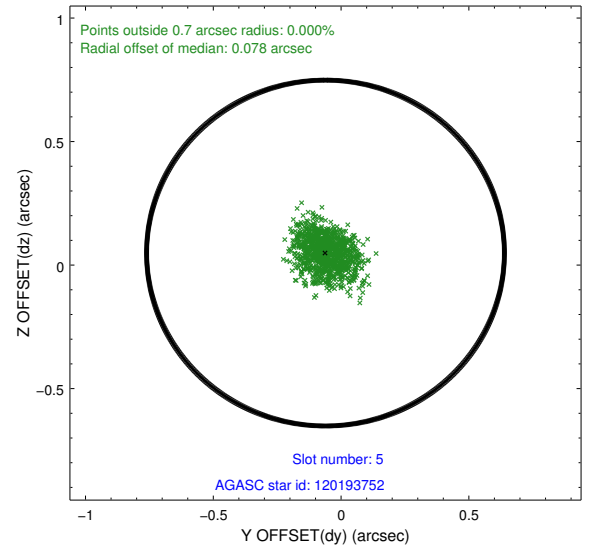
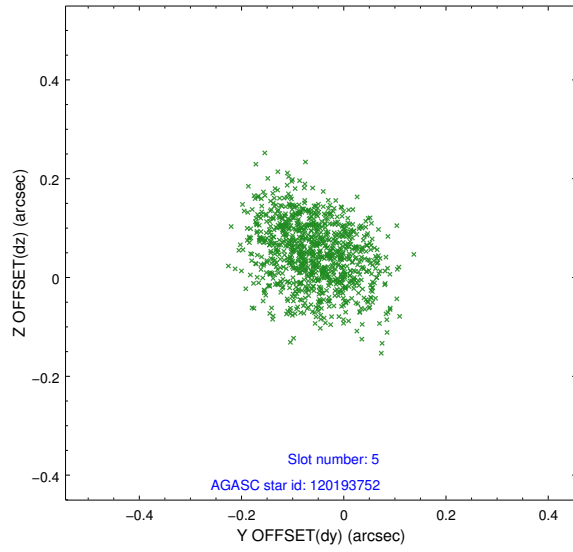
2.4.1 Slot 3



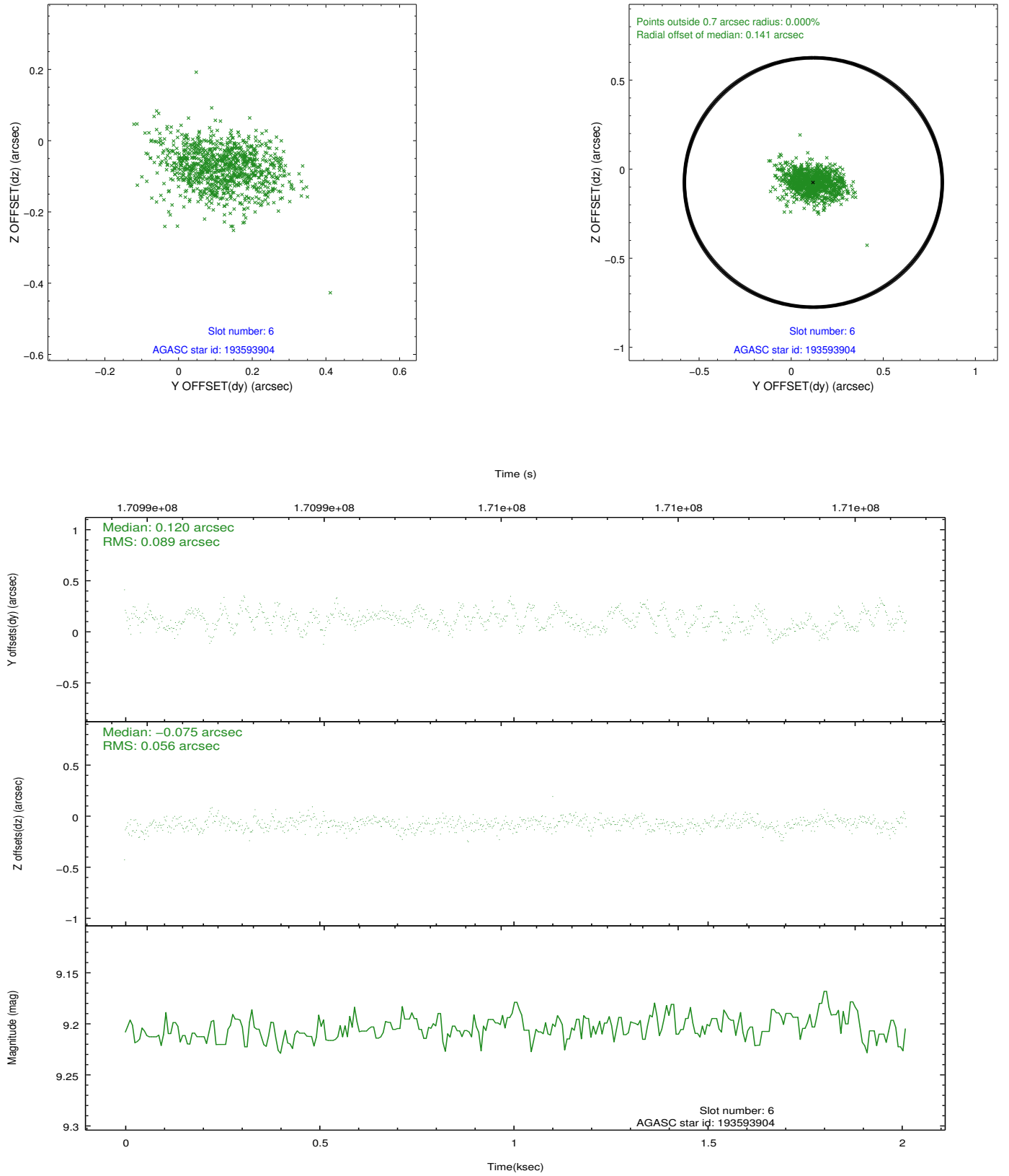
2.4.2 Slot 4



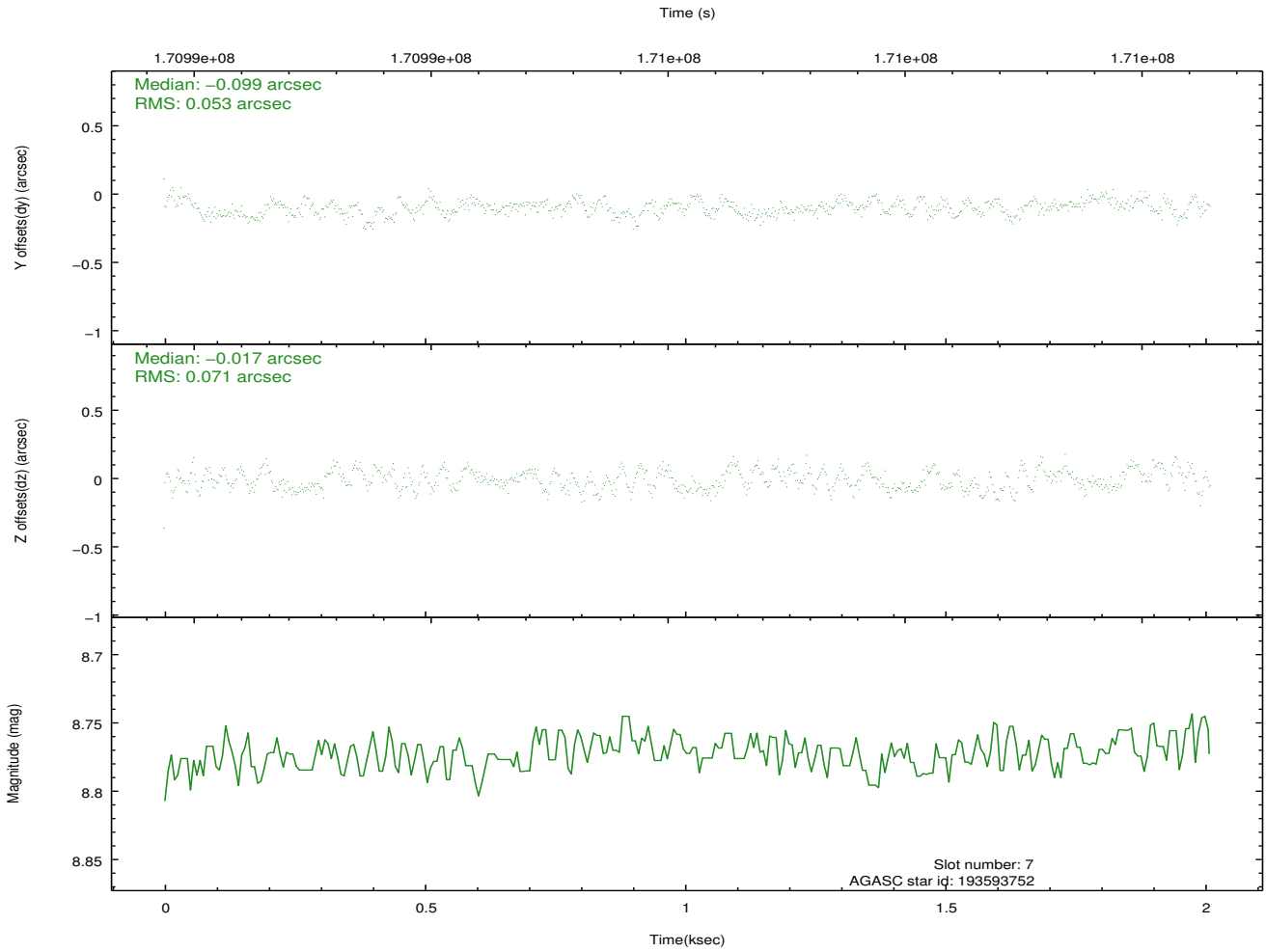
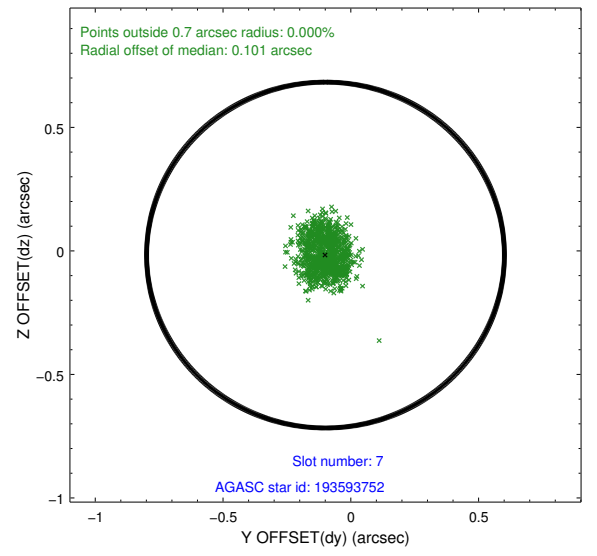
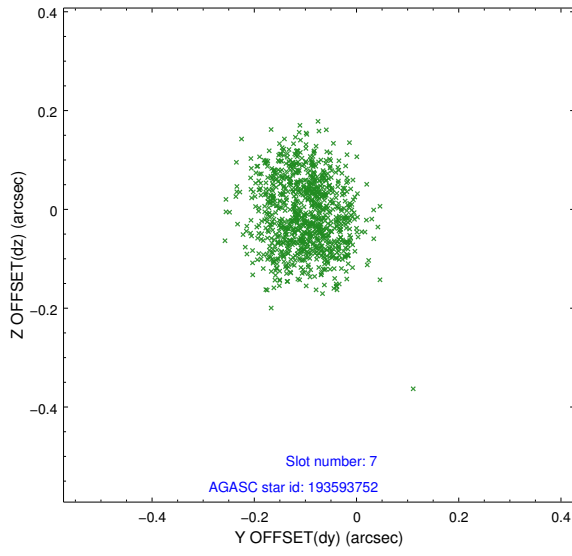
2.4.3 Slot 5



2.4.4 Slot 6

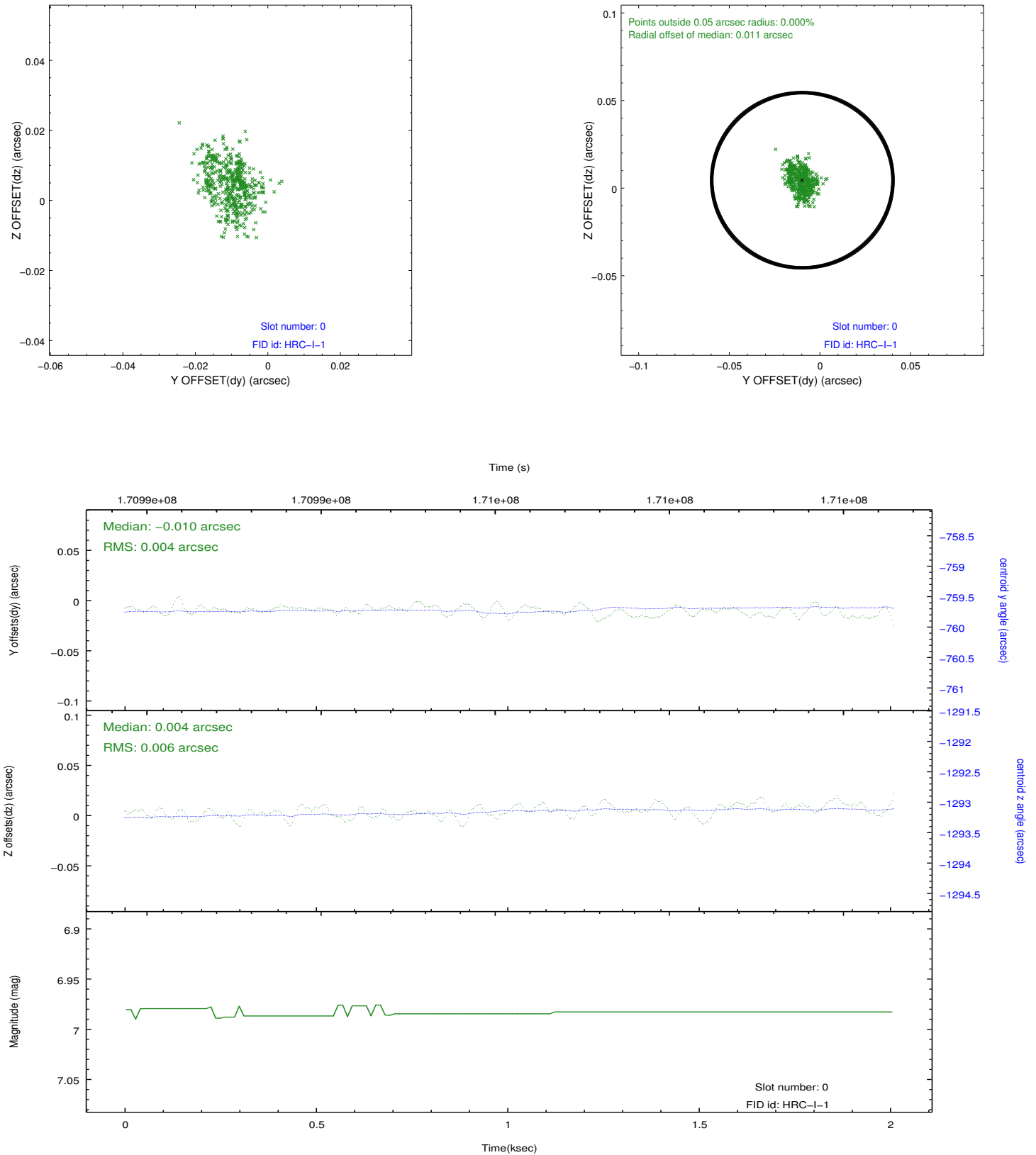


2.4.5 Slot 7

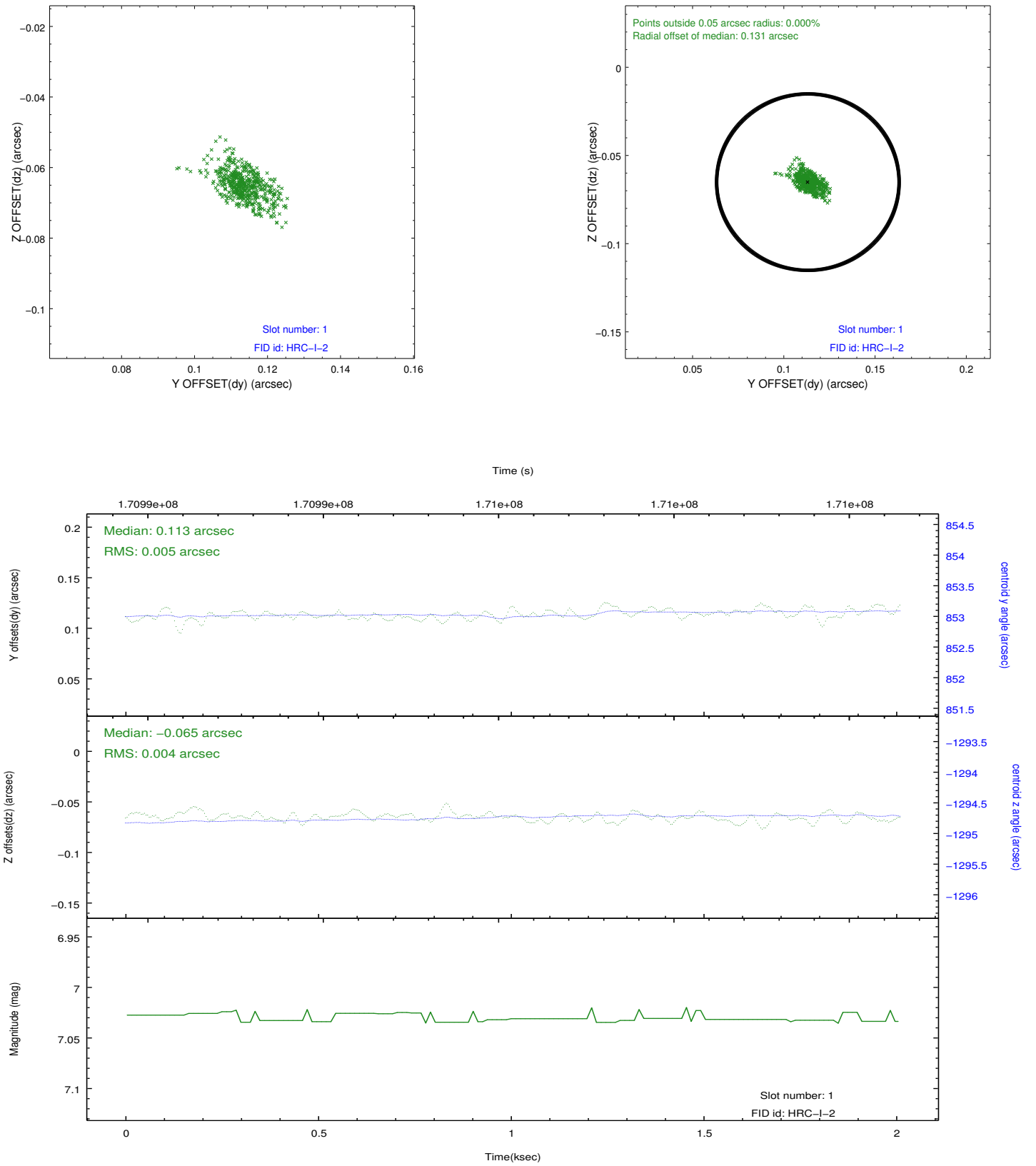


2.5 FID Slots

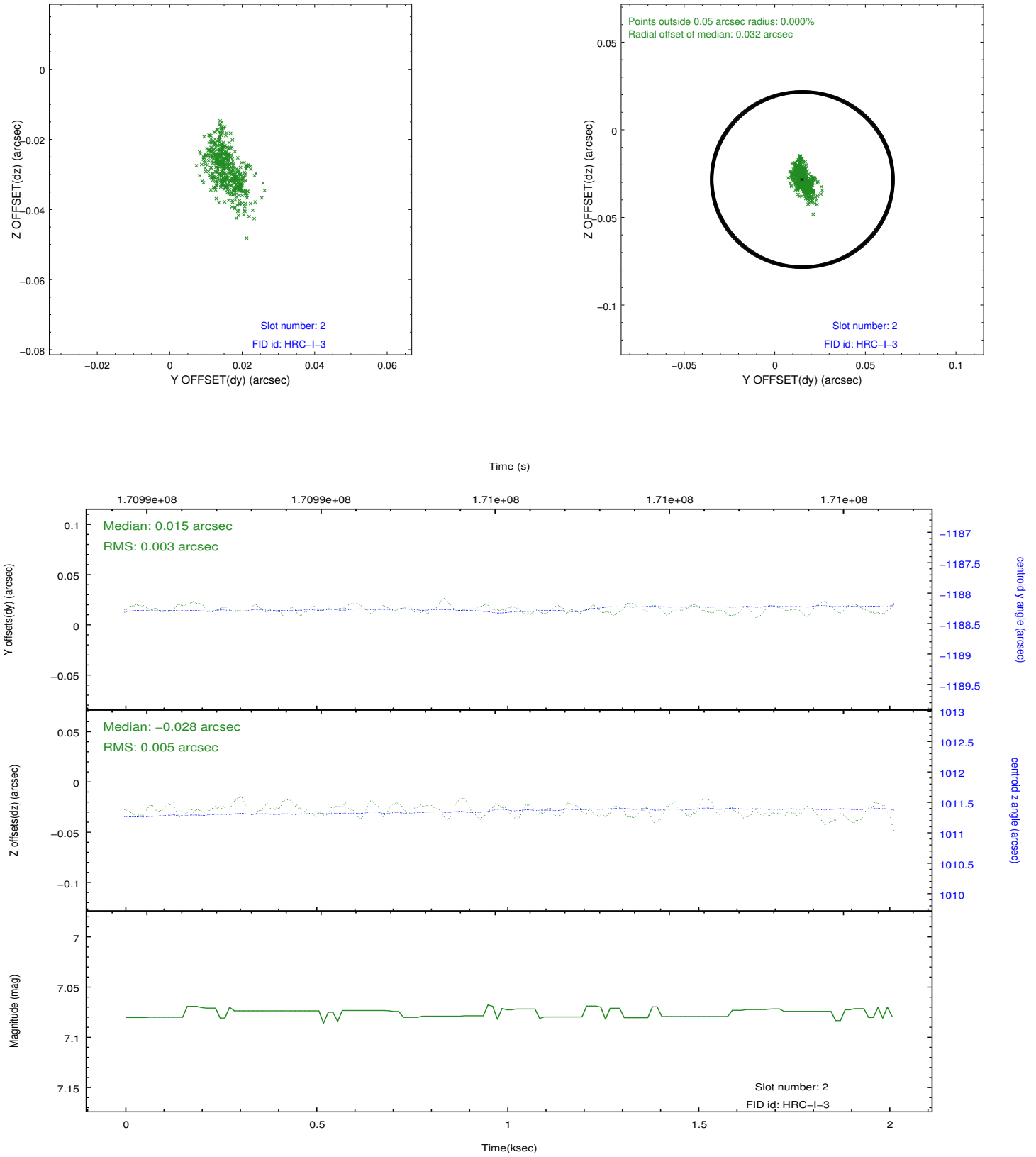
2.5.1 Slot 0



2.5.2 Slot 1



2.5.3 Slot 2



A Summary

A.1 Status

V&V Scientist	Jen Lauer
V&V Date (YYYY-MM-DD)	2012.11.15
V&V Edition	1
V&V Disposition and Status	OK
V&V Charge Time	1.794

A.2 Comments