

V&V Reference Report

L2 ASCDS Version : 7.6.9

Observation 3494 - L2 Version 001
Chandra X-Ray Center

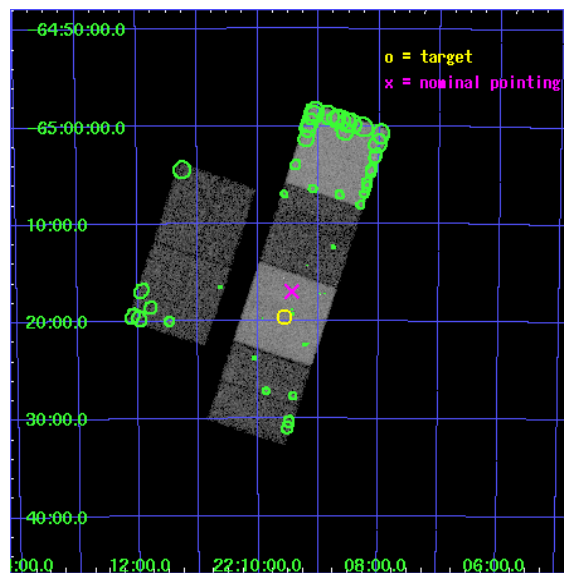
L2 Processing Date : Sep 16 2006

Contents

1	Front	2
2	OBI	3
2.1	OBI	3
2.1.1	Images	3
2.1.2	Bias	3
2.1.3	Parameters	4
2.1.4	Events	4
2.2	Compared Parameters	5
2.3	Aspect	6
2.4	Star Slots	9
2.4.1	Slot 3	9
2.4.2	Slot 4	10
2.4.3	Slot 5	11
2.4.4	Slot 6	12
2.4.5	Slot 7	13
2.5	FID Slots	14
2.5.1	Slot 0	14
2.5.2	Slot 1	15
2.5.3	Slot 2	16
3	Point Sources	17
A	Summary	18
A.1	Status	18
A.2	Comments	18

1 Front

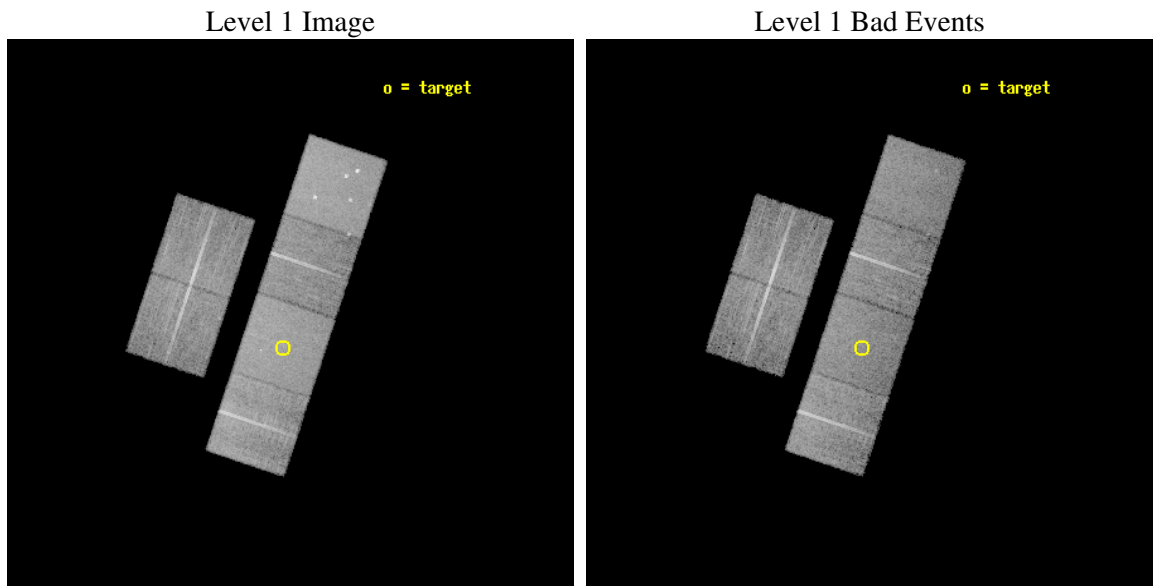
seq_num	500296
obs_id	3494
title	CHANDRA ARCSECOND LOCALIZATION OF THE X-RAY FLASH XRF020427
observer	Dr Derek Fox
object	XRF020427
dtcycle	0
cycle	P
ra_targ	332.39
dec_targ	-65.326806
ra_nom	332.35964682031
dec_nom	-65.282868054257
roll_nom	108.36508602858
revision	2
ontime	14751.999945045
livetime	14565.201239152
ontime2	14751.999945045
ontime3	14751.999945045
ontime5	14751.999945045
ontime6	14751.999945045
ontime7	14751.999945045
ontime8	14751.999945045
l2events	144838



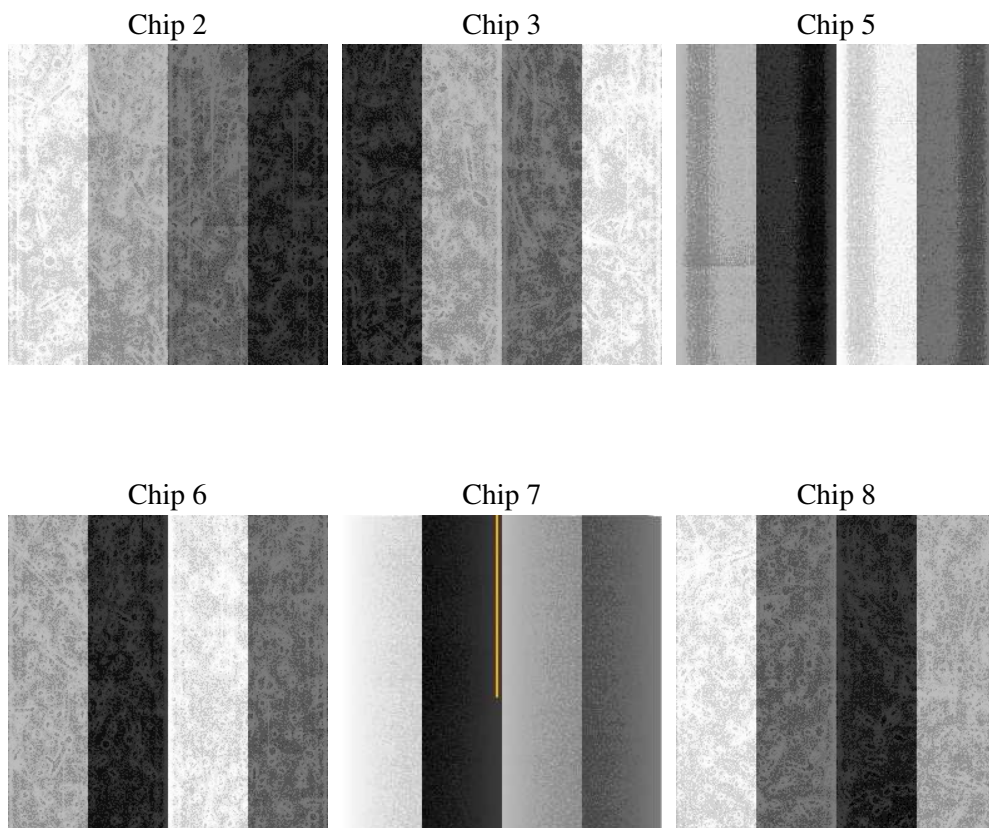
2 OBI

2.1 OBI

2.1.1 Images



2.1.2 Bias



2.1.3 Parameters

obi_num	0
ascdsver	7.6.9
caldbver	3.2.3
date	2006-09-16T10:27:38
revision	2

sched_exp_time	15000.000000
ontime	14759.525111765
ontime2	14759.525111765
ontime3	14759.525081873
ontime5	14759.525111765
ontime6	14759.525081873
ontime7	14759.525111765
ontime8	14759.525002241
l1events	661818

2.1.4 Events

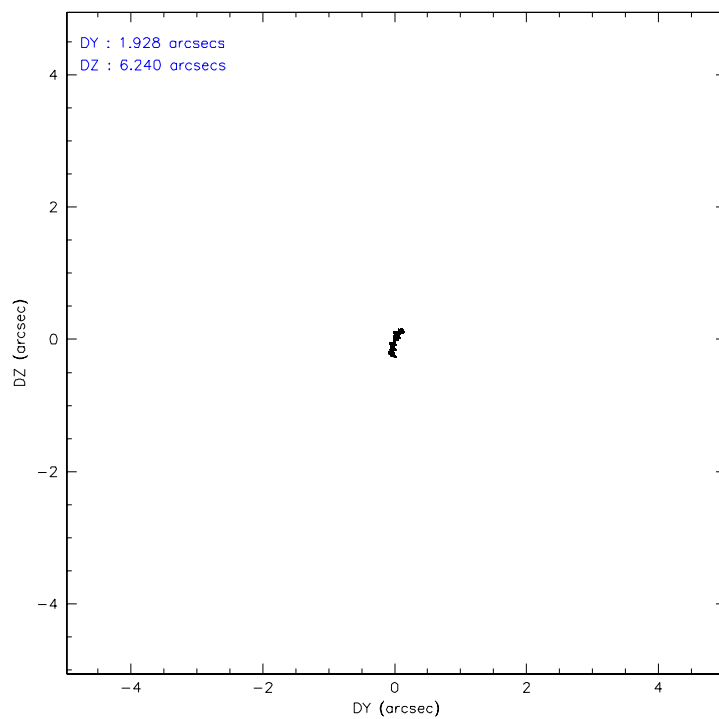
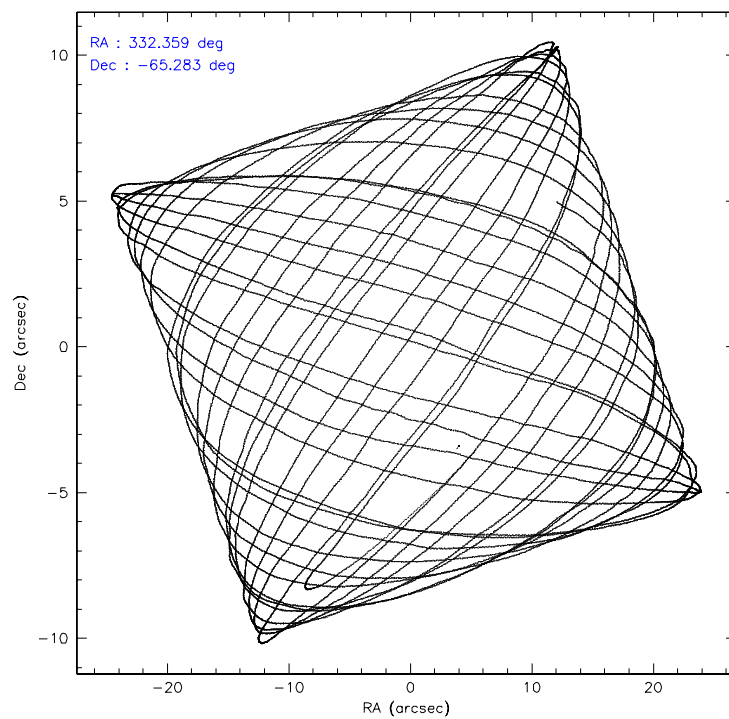
	ccd 2	ccd 3	ccd 5	ccd 6	ccd 7	ccd 8
level 1 events	95661	90359	136800	92872	125473	120653
rejected events	84778	79260	74542	81723	76369	96175
rejected %	88%	87%	54%	87%	60%	79%

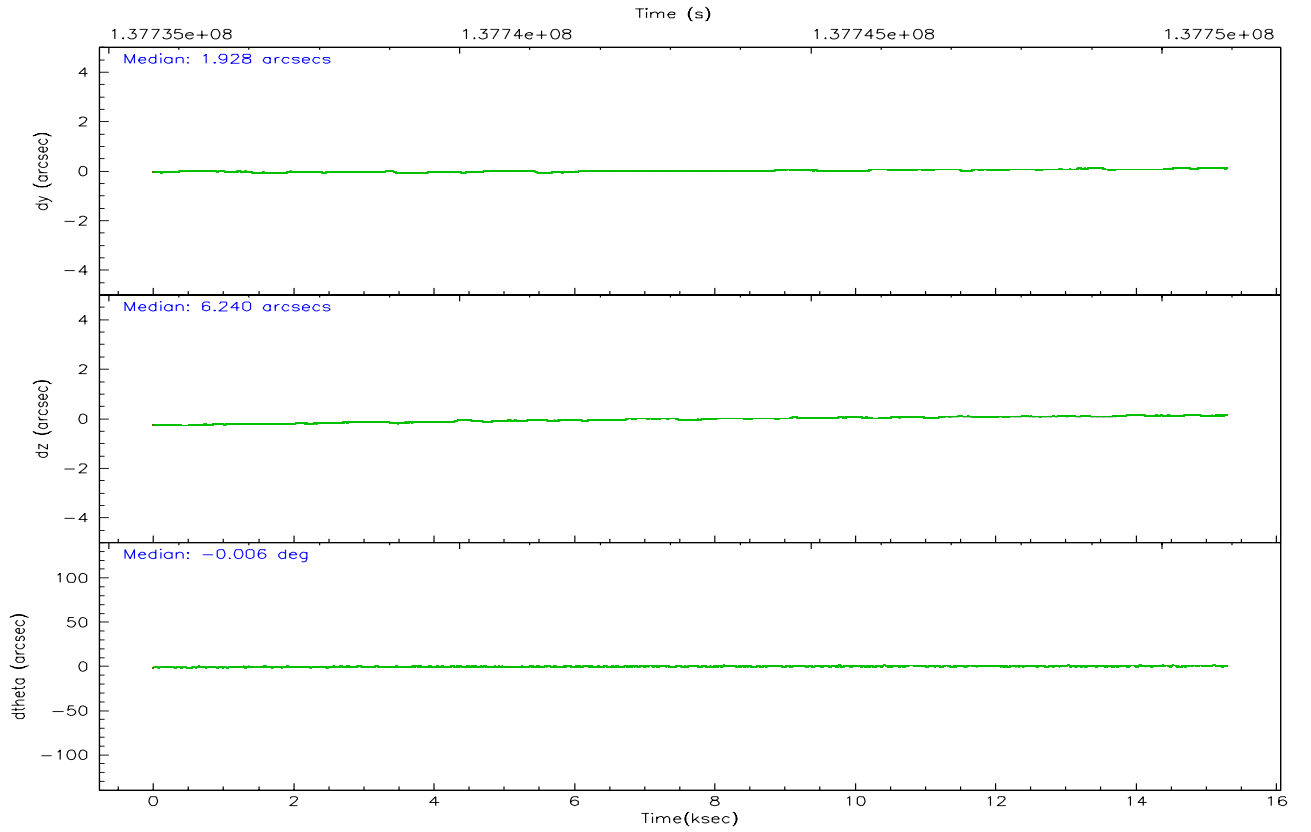
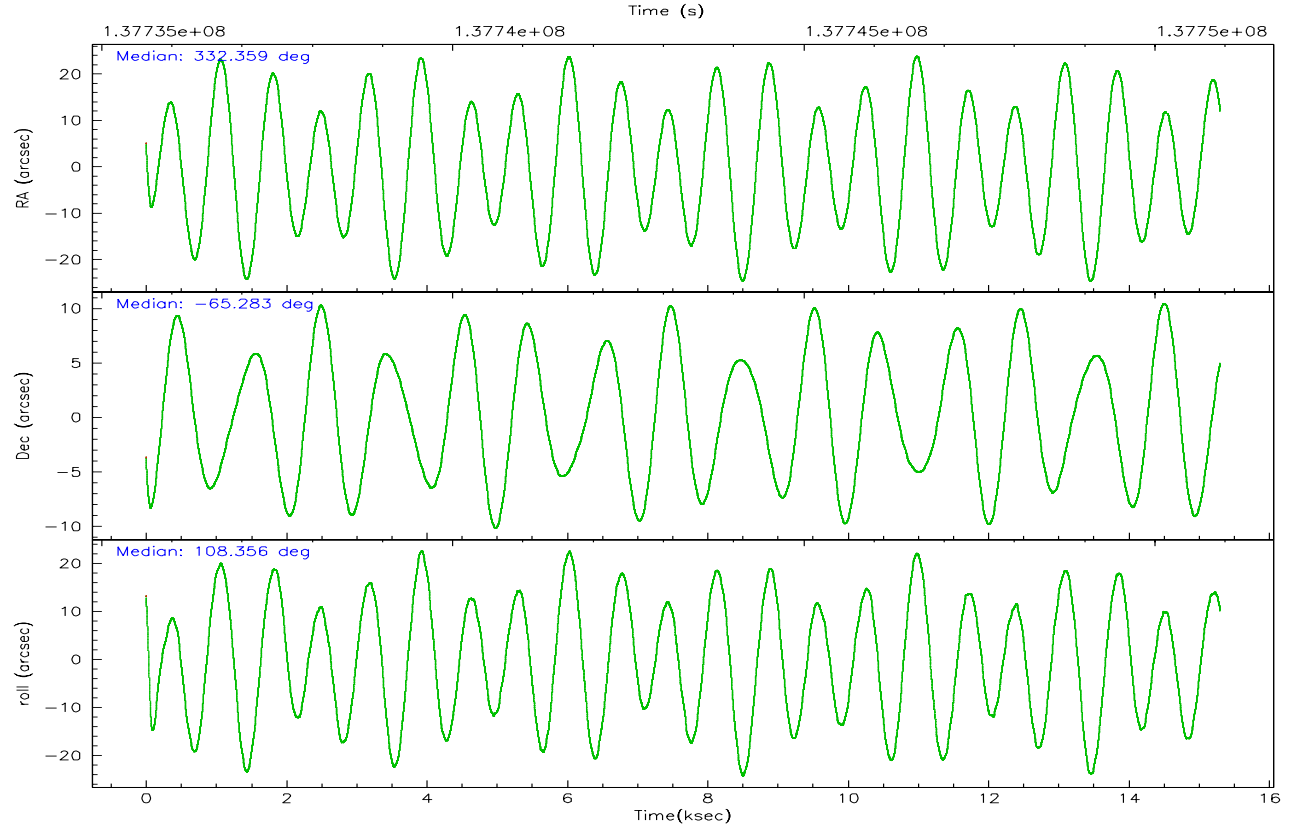
	ccd 2	ccd 3	ccd 5	ccd 6	ccd 7	ccd 8
grade 0 events	4629	4927	6993	4673	3391	7763
	4%	5%	5%	5%	2%	6%
grade 1 events	48	42	318	45	79	72
	0%	0%	0%	0%	0%	0%
grade 2 events	2370	2221	18385	2229	12048	5278
	2%	2%	13%	2%	9%	4%
grade 3 events	991	972	1469	1084	2602	2620
	1%	1%	1%	1%	2%	2%
grade 4 events	1028	999	1446	1062	2554	2399
	1%	1%	1%	1%	2%	1%
grade 5 events	3501	3808	6584	4078	8310	5193
	3%	4%	4%	4%	6%	4%
grade 6 events	1873	1985	33993	2103	28543	6431
	1%	2%	24%	2%	22%	5%
grade 7 events	81221	75405	67612	77598	67946	90897
	84%	83%	49%	83%	54%	75%

2.2 Compared Parameters

Parameter	Planned	Actual	Parameter	Planned	Actual
Instrument	ACIS	ACIS	Obspar format version number	6	6
Detector	ACIS-235678	ACIS-235678	Obspar file type	PREDICTED	ACTUAL
Grating	NONE	NONE	Obspar update status	NONE	UPDATED
Data mode	FAINT	FAINT	Number of optional ACIS chips dropped	0	0
Observation mode	POINTING	POINTING	On-chip summing requested	N	N
Pointing RA	332.408877	332.3596468203139	Subarray requested	NONE	NONE
Pointing Dec	-65.300696	-65.28286805425675	Alternating exposures requested	N	N
Pointing Roll	108.253169	108.3650860285813	Primary exposure time	0.000000	3.2
SIM focus pos (mm)	-0.684267	-0.6828225247311905			
SIM defocus (mm)	0	0.001444936568705701			
SIM translation stage pos (mm)	-190.132523	-190.1400660498719			
SIM translation stage offset (mm)	0	0.00754346686406393			
Observation start time	137735813.184000	137735003.68998			
Observation start date	2002-05-14T03:55:49	2002-05-14T03:43:23			
Observation end time	137750813.184000	137751245.84065			
Observation end date	2002-05-14T08:05:49	2002-05-14T08:14:05			
Read mode	TIMED	TIMED			

2.3 Aspect



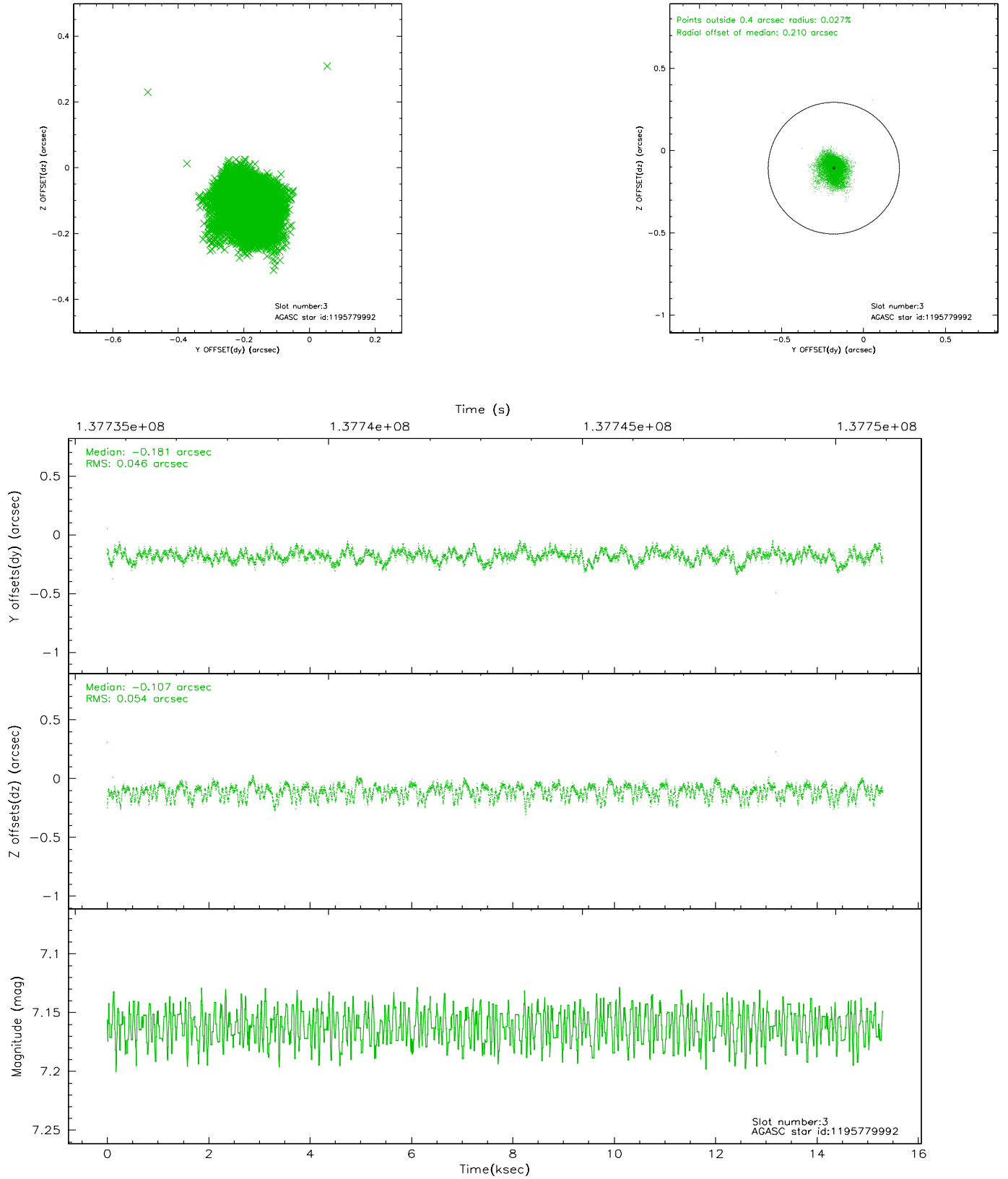


Slot Statistics

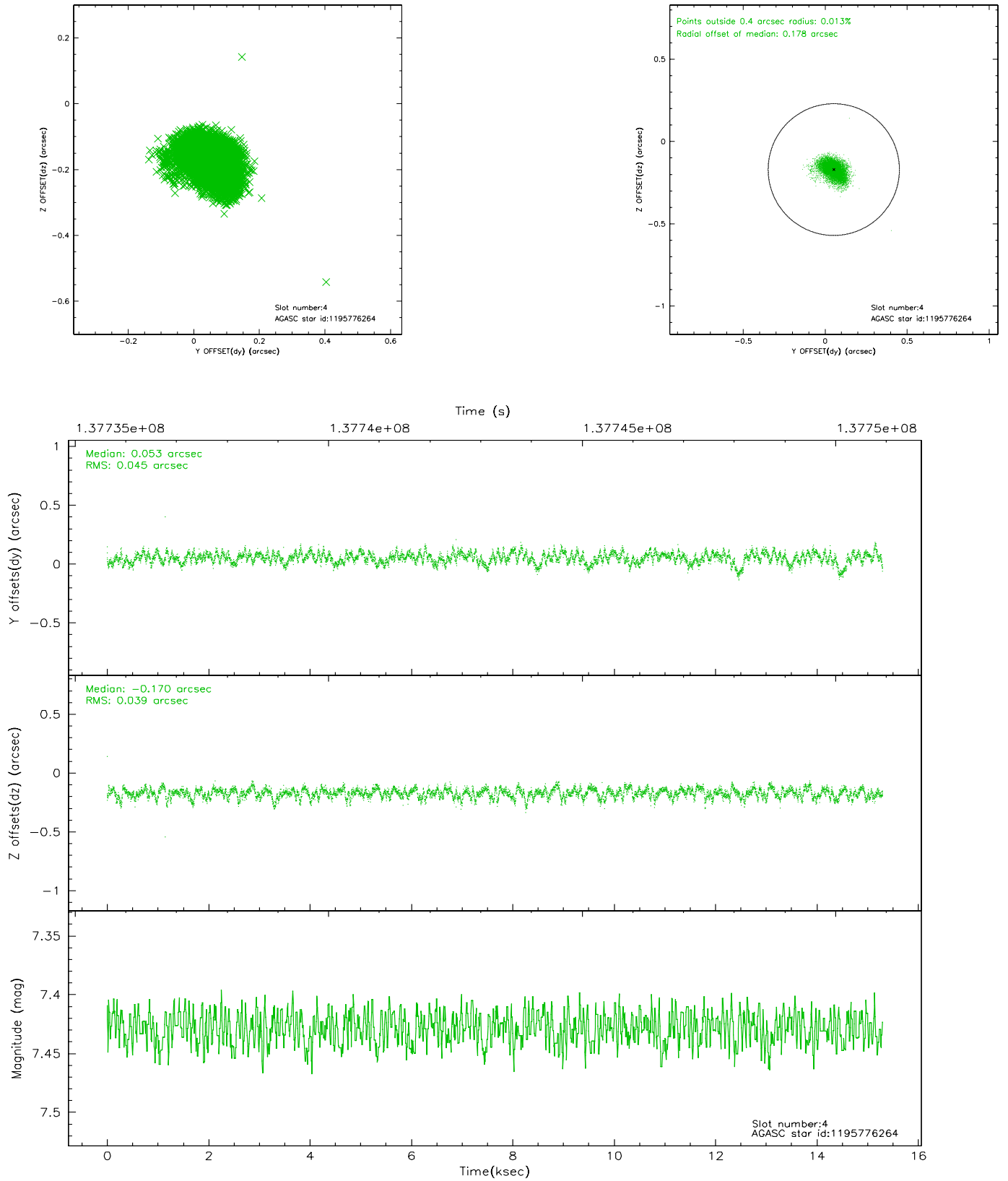
slot	status	id	mag	n_pts	med_dy	med_dz	dr1	dr2	ra	dec	mean_y	mean_z
0	FID	ACIS-S-4	7.21	3732	-0.058	-0.004	0.005	0.009	0.000000	0.000000	2158.73	181.35
1	FID	ACIS-S-5	7.24	3731	0.045	0.002	0.005	0.009	0.000000	0.000000	-1806.98	174.78
2	FID	ACIS-S-6	7.36	3731	-0.015	0.016	0.007	0.011	0.000000	0.000000	406.71	818.58
3	GUIDE	1195779992	7.16	7464	-0.181	-0.107	0.076	0.121	331.940145	-65.103283	894.06	452.22
4	GUIDE	1195776264	7.43	7466	0.053	-0.170	0.062	0.106	331.516114	-65.668289	-851.65	1674.13
5	GUIDE	1195389528	7.82	7463	-0.156	0.175	0.074	0.118	333.118104	-64.595241	2062.39	-1833.79
6	GUIDE	1195782248	10.15	7212	0.222	-0.129	0.190	0.303	331.956274	-66.053242	-2368.52	1476.17
7	GUIDE	1195775008	10.36	7458	0.077	0.229	0.168	0.293	334.052993	-65.386139	-1095.27	-2234.92

2.4 Star Slots

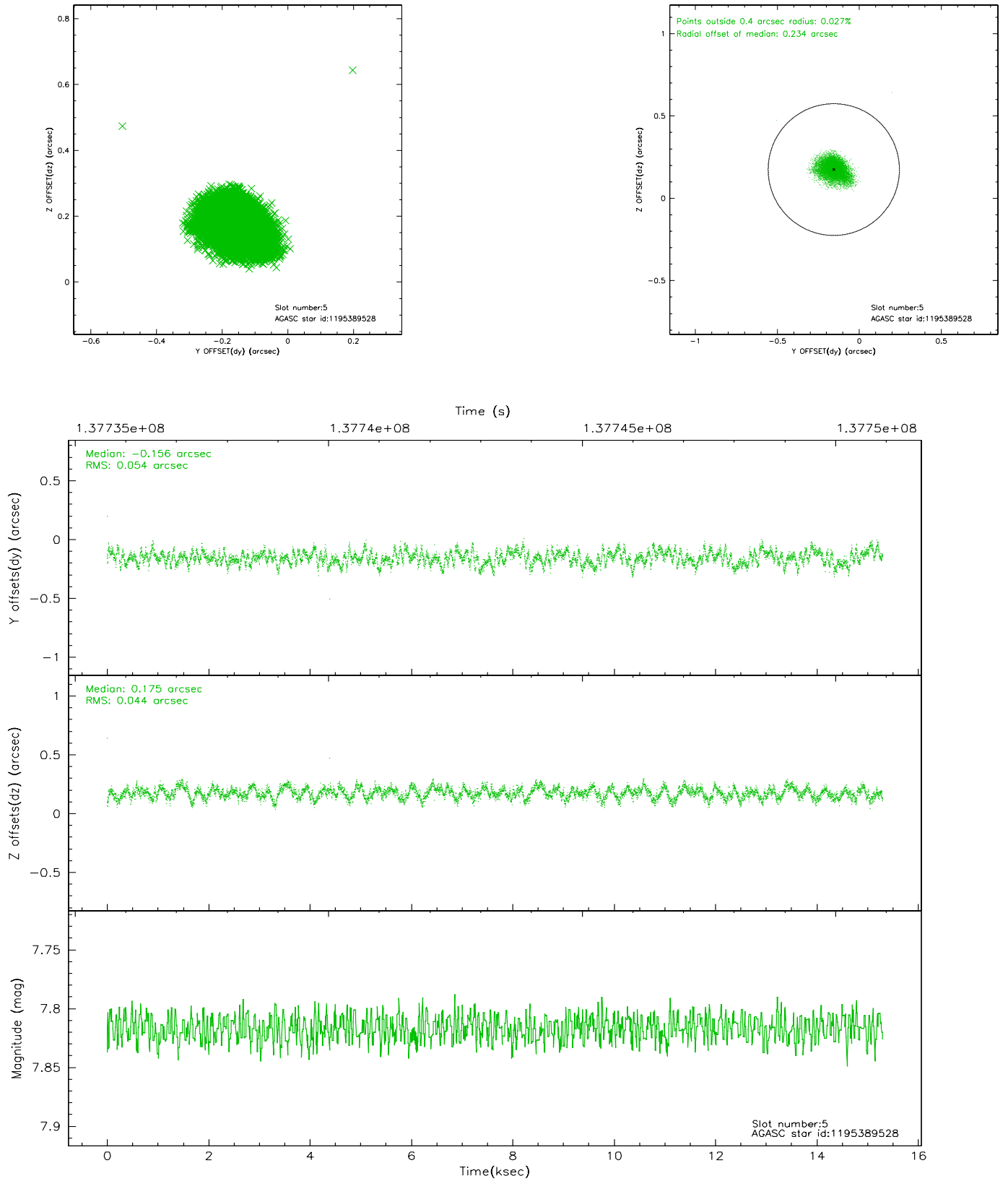
2.4.1 Slot 3



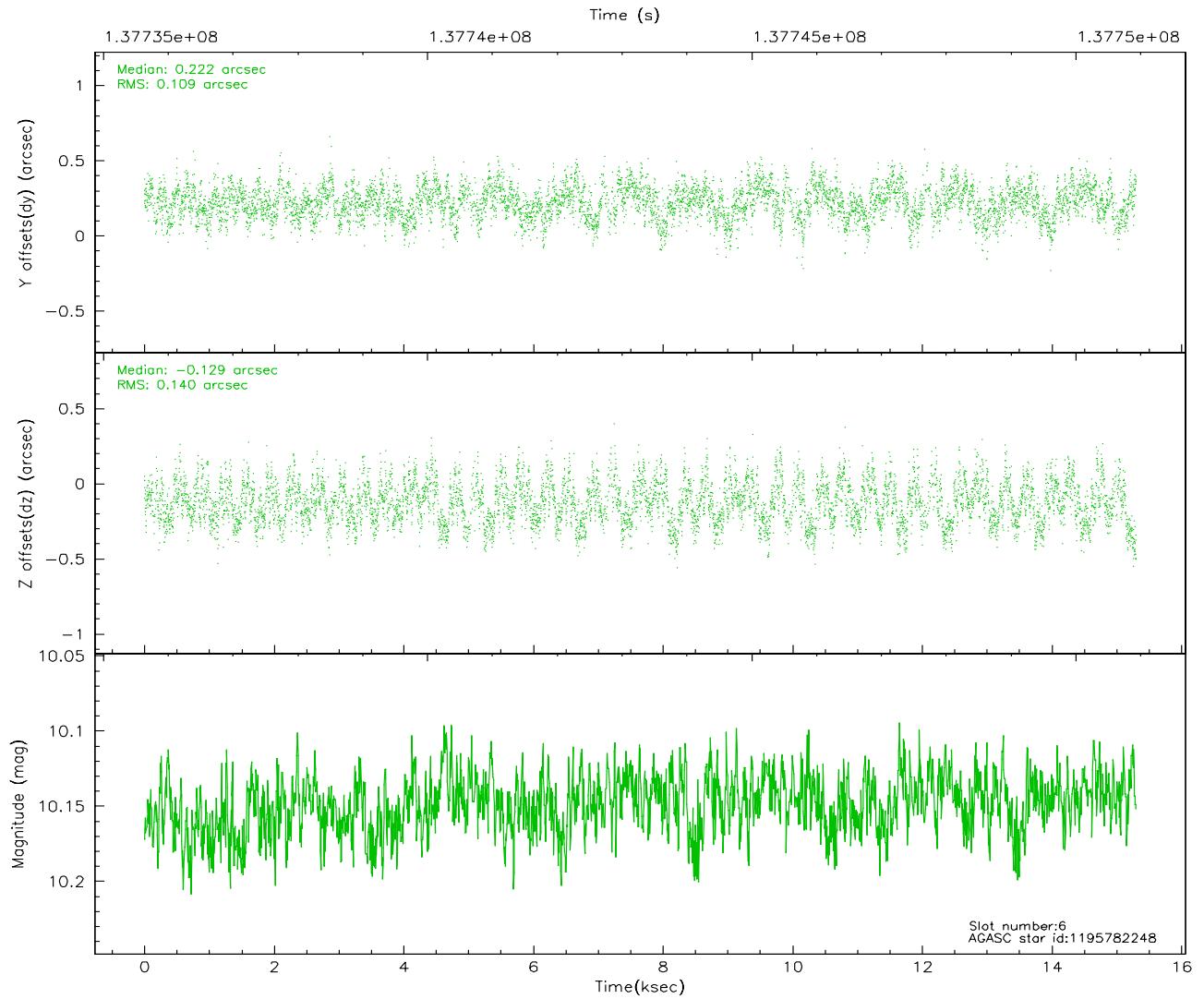
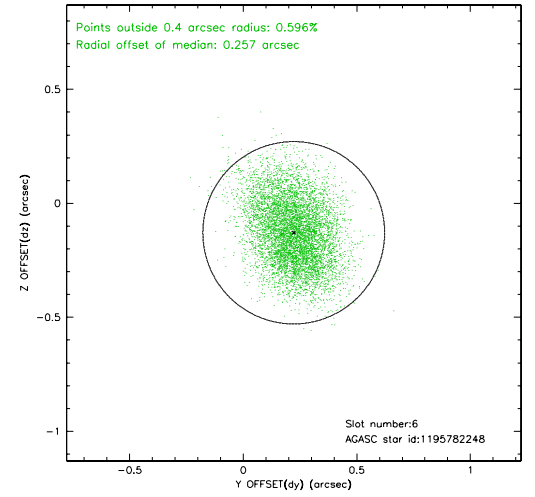
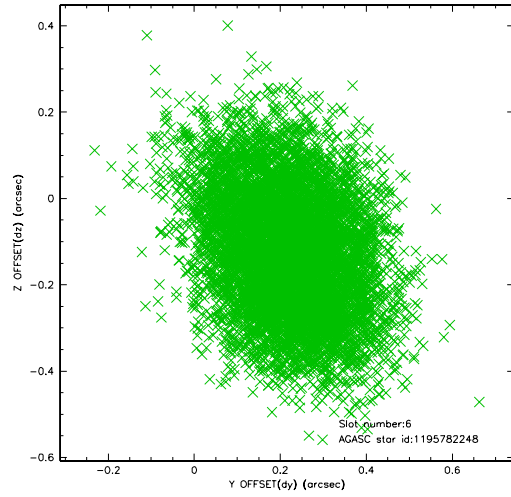
2.4.2 Slot 4



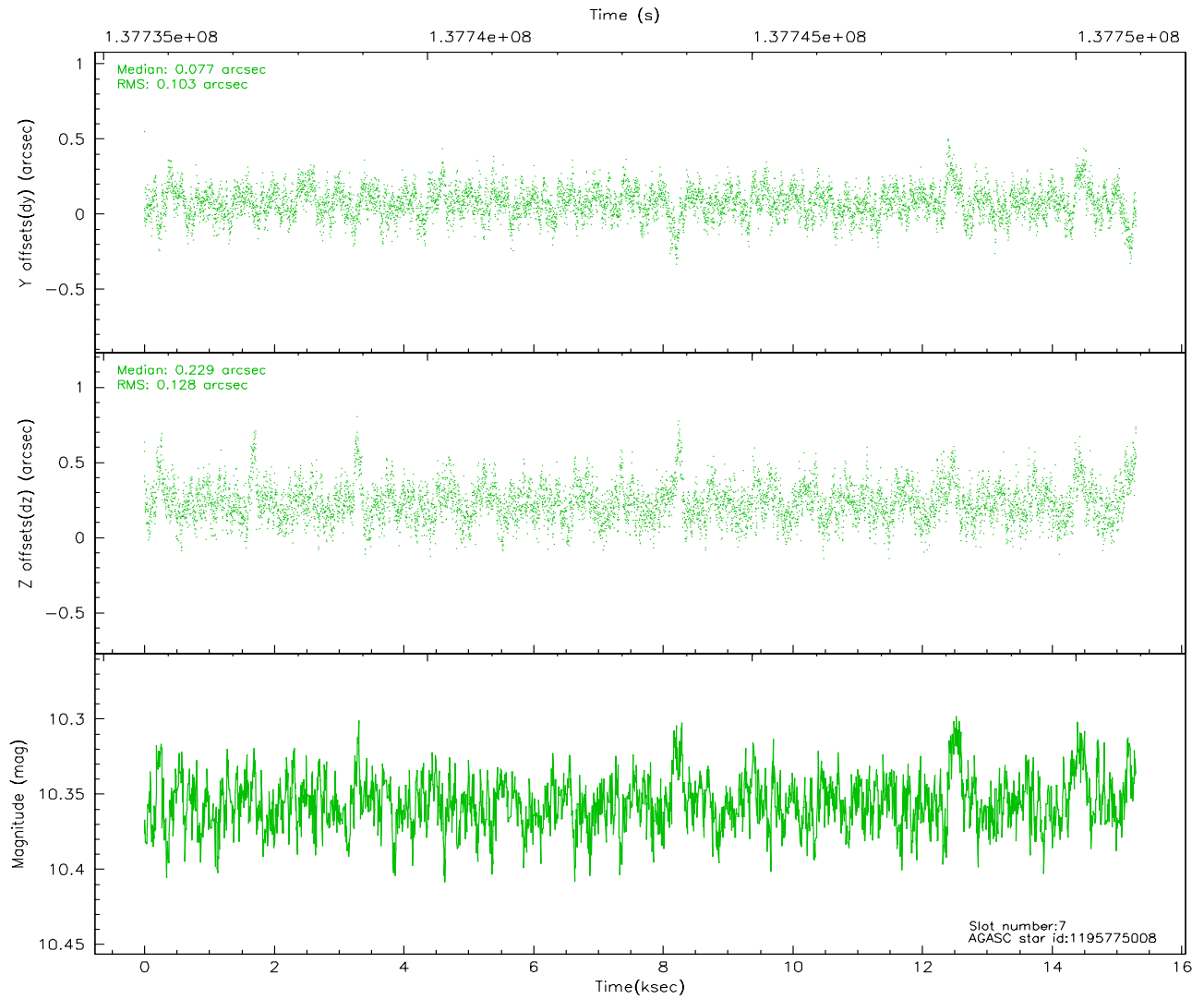
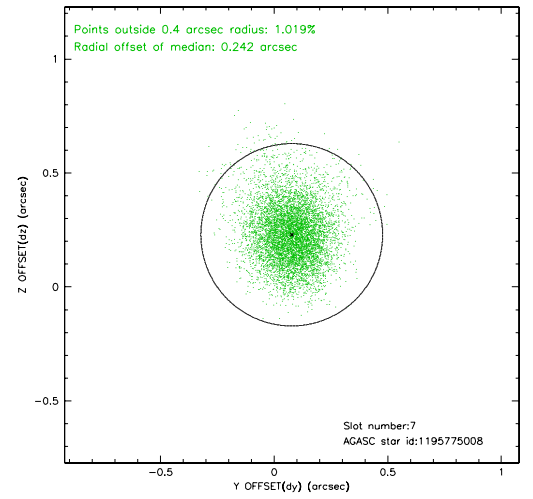
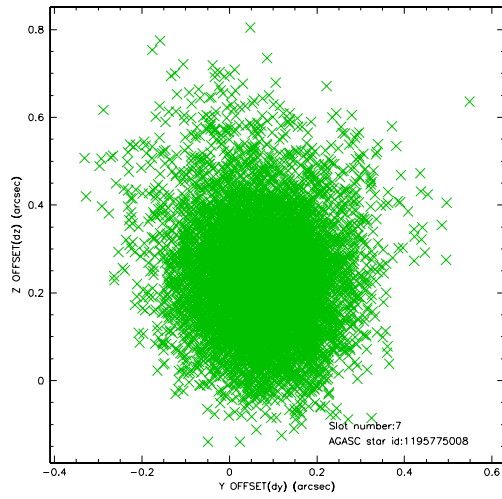
2.4.3 Slot 5



2.4.4 Slot 6

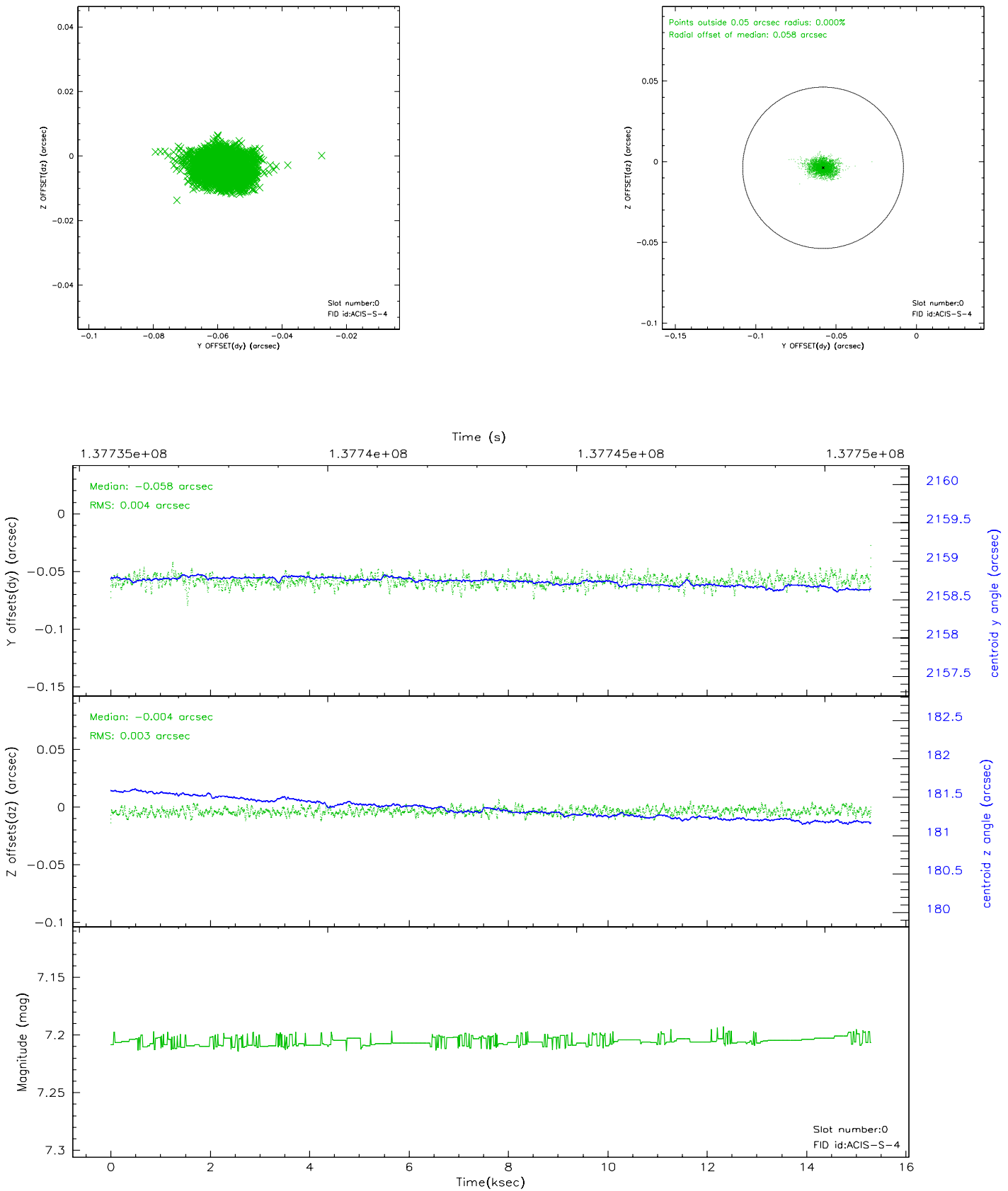


2.4.5 Slot 7

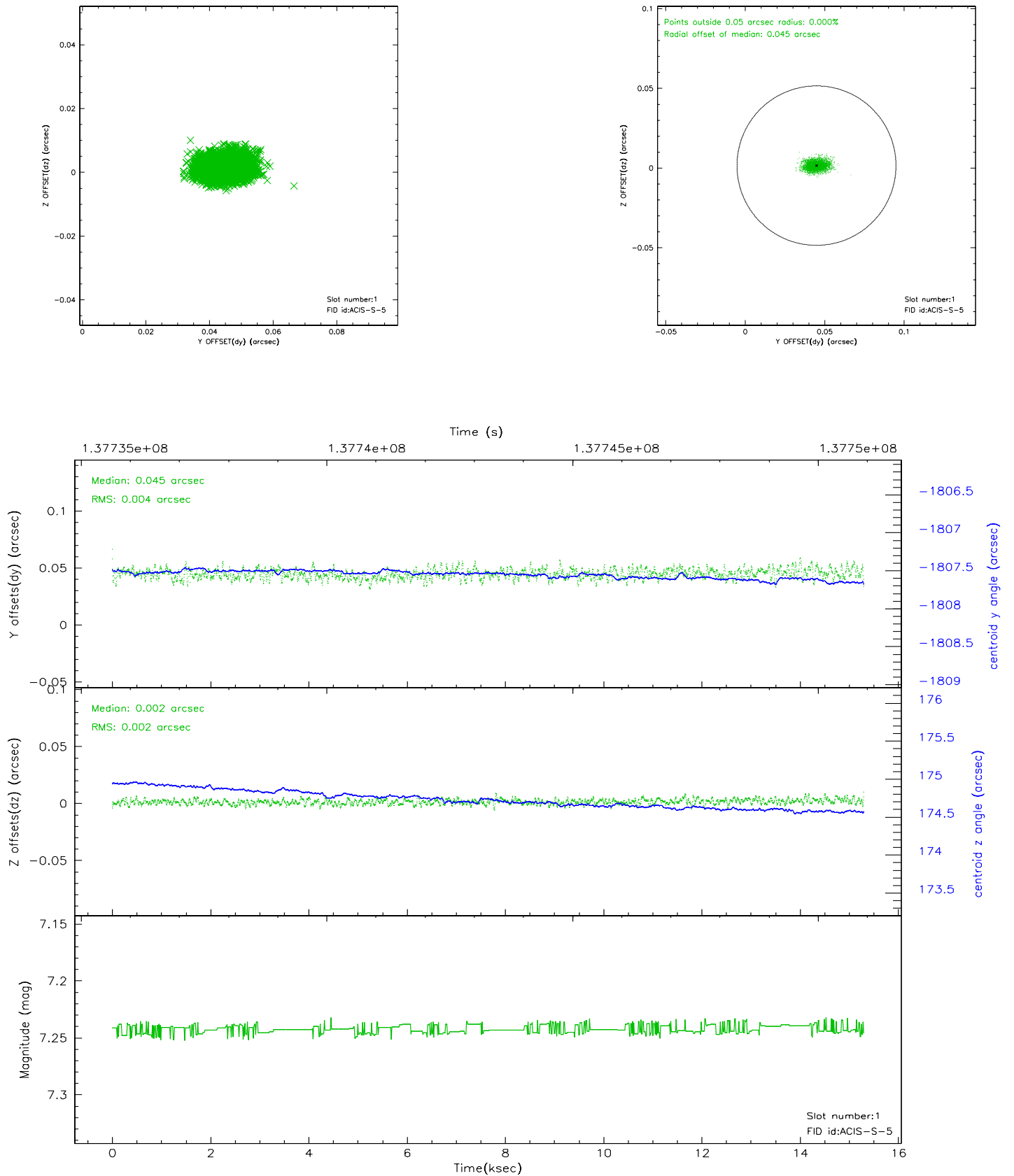


2.5 FID Slots

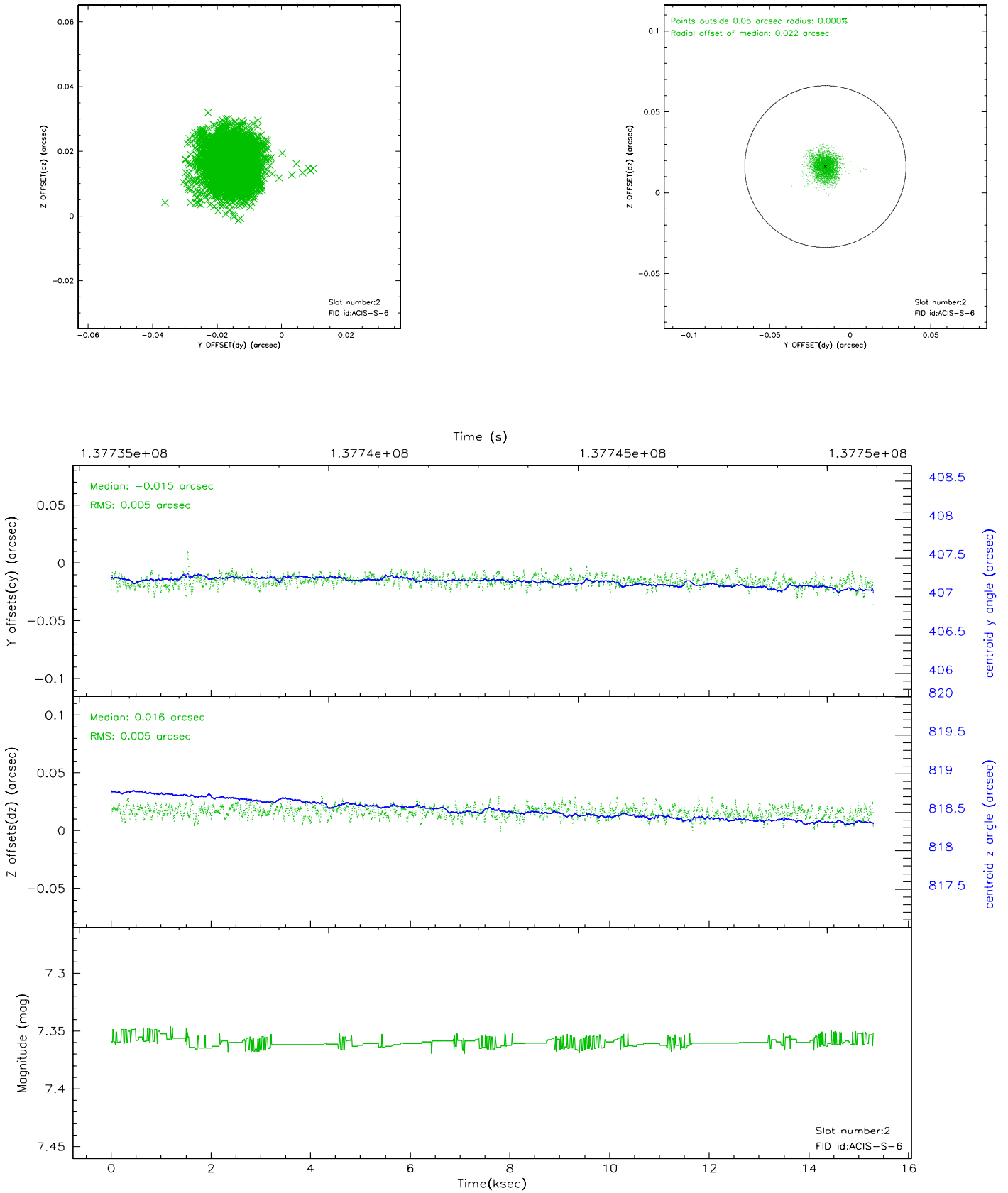
2.5.1 Slot 0



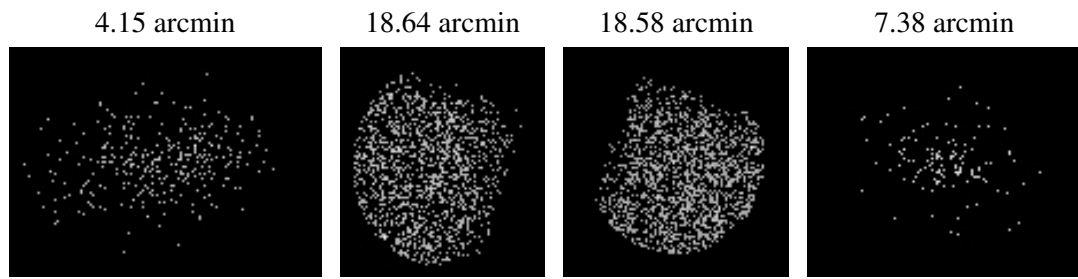
2.5.2 Slot 1



2.5.3 Slot 2



3 Point Sources



A Summary

A.1 Status

V&V Scientist	Jen Lauer
V&V Date (YYYY-MM-DD)	2006.09.18
V&V Edition	1
V&V Disposition and Status	OK
V&V Charge Time	14.755

A.2 Comments

Monitor constraint met.