

V&V Reference Report

L2 ASCDS Version : 7.6.9

Observation 3324 - L2 Version 001
Chandra X-Ray Center

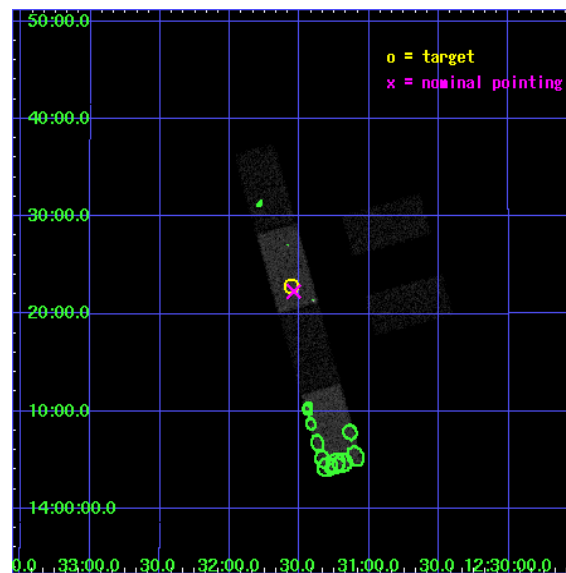
L2 Processing Date : Sep 26 2006

Contents

1	Front	2
2	OBI	3
2.1	OBI	3
2.1.1	Images	3
2.1.2	Bias	3
2.1.3	Parameters	4
2.1.4	Events	4
2.2	Compared Parameters	5
2.3	Aspect	6
2.4	Star Slots	9
2.4.1	Slot 3	9
2.4.2	Slot 4	10
2.4.3	Slot 5	11
2.4.4	Slot 6	12
2.4.5	Slot 7	13
2.5	FID Slots	14
2.5.1	Slot 0	14
2.5.2	Slot 1	15
2.5.3	Slot 2	16
3	Point Sources	17
A	Summary	18
A.1	Status	18
A.2	Comments	18

1 Front

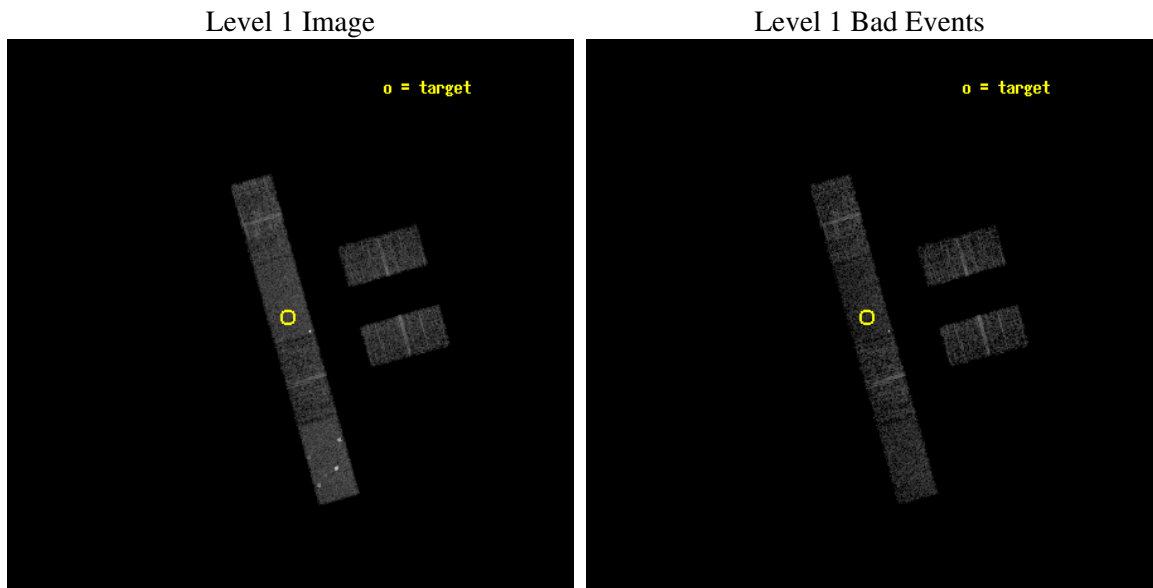
seq_num	900163
obs_id	3324
title	THE SHEEP SURVEY: WHAT KIND OF OBJECTS MAKE THE X-RAY BACKGROUND?
observer	Professor Kirpal Nandra
object	AX J1231.5+1422
dtcycle	0
cycle	P
ra_targ	187.889583
dec_targ	14.380556
ra_nom	187.88515271407
dec_nom	14.371815335596
roll_nom	254.27820848465
revision	2
ontime	4662.0000308752
livetime	4558.0759003473
ontime2	4662.0000308752
ontime3	4661.9925768673
ontime5	4662.0000308752
ontime6	4662.0000308752
ontime7	4662.0000308752
ontime8	4661.9515368938
l2events	32135



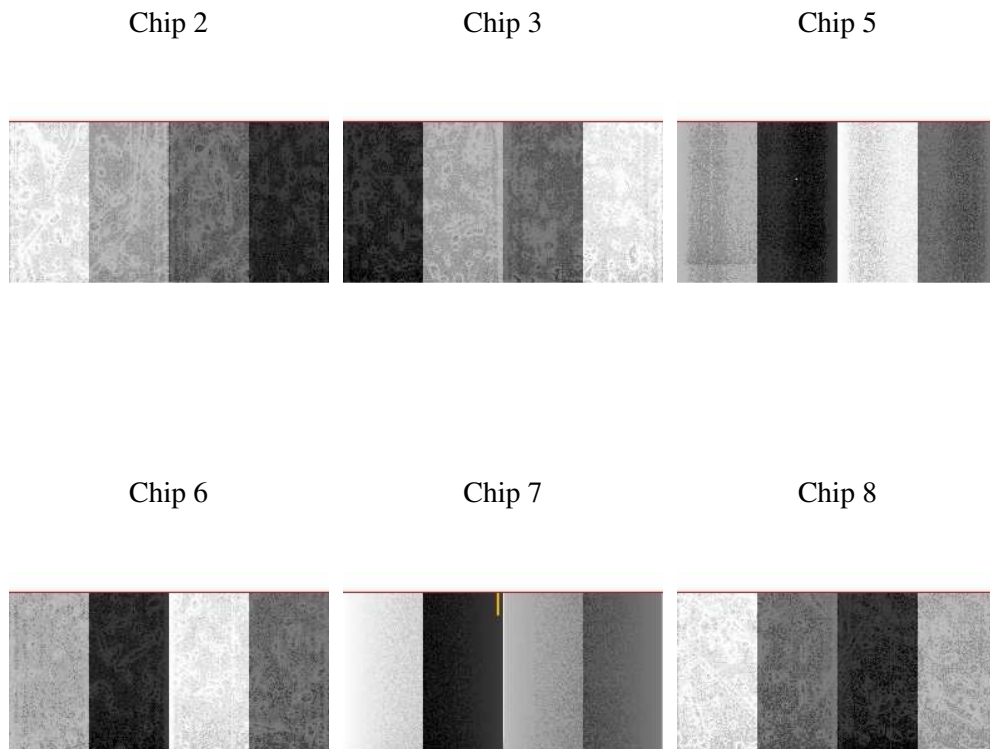
2 OBI

2.1 OBI

2.1.1 Images



2.1.2 Bias



2.1.3 Parameters

obi_num	1
ascdsver	7.6.9
caldsver	3.2.3
date	2006-09-26T09:02:04
revision	2

sched_exp_time	4900.000000
ontime	4663.2958416343
ontime2	4663.2958416343
ontime3	4663.2958416343
ontime5	4663.2958416343
ontime6	4663.2958416343
ontime7	4663.2958416343
ontime8	4663.2958416343
l1events	127613

2.1.4 Events

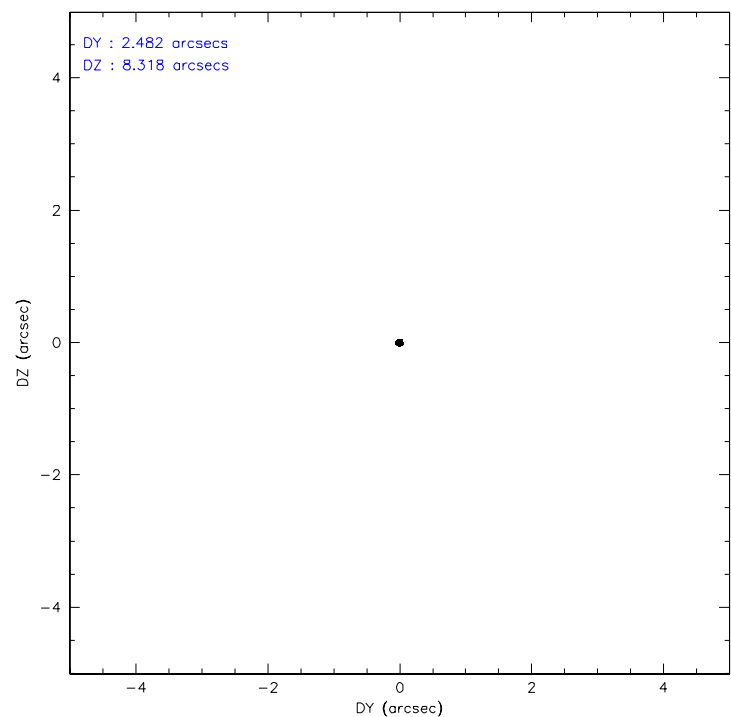
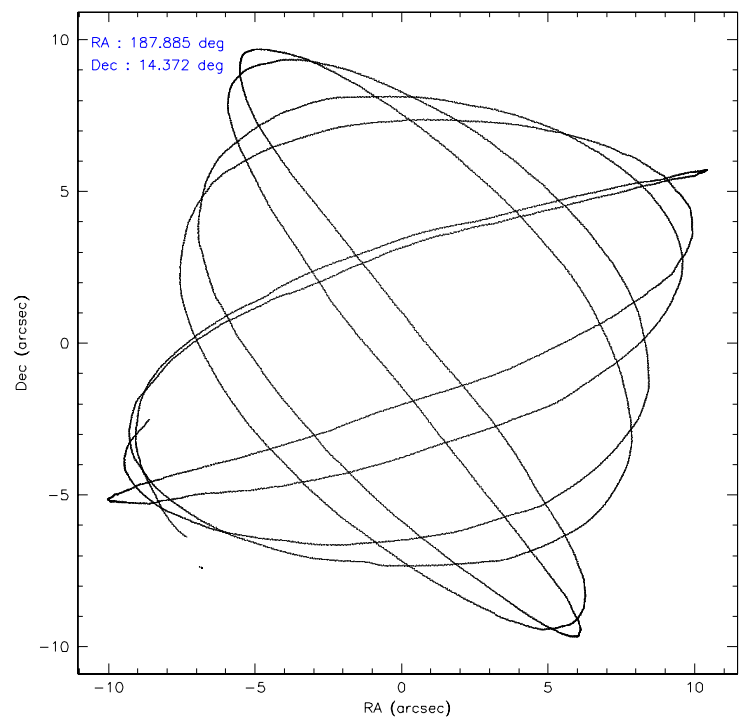
	ccd 2	ccd 3	ccd 5	ccd 6	ccd 7	ccd 8
level 1 events	17724	17084	27964	17598	24888	22355
rejected events	15248	14699	12300	15041	12640	16501
rejected %	86%	86%	43%	85%	50%	73%

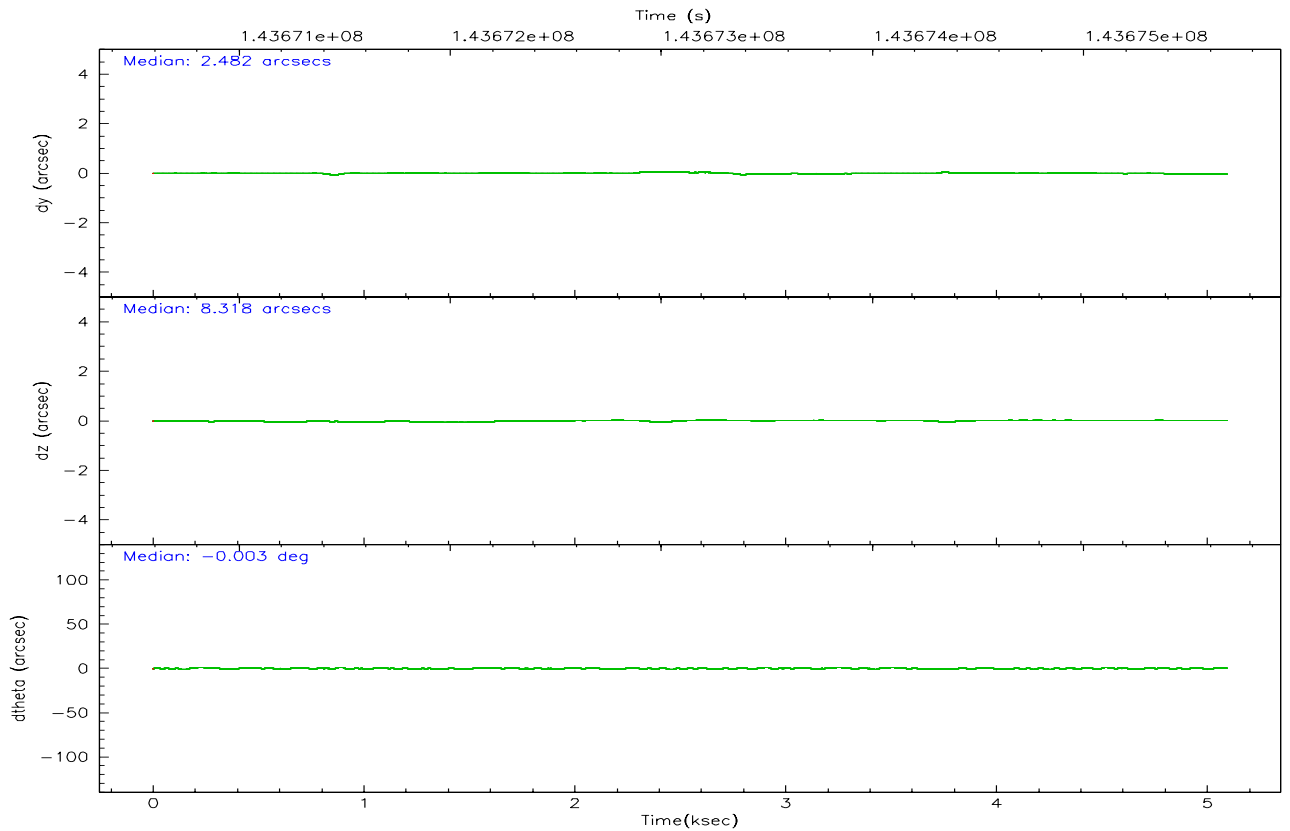
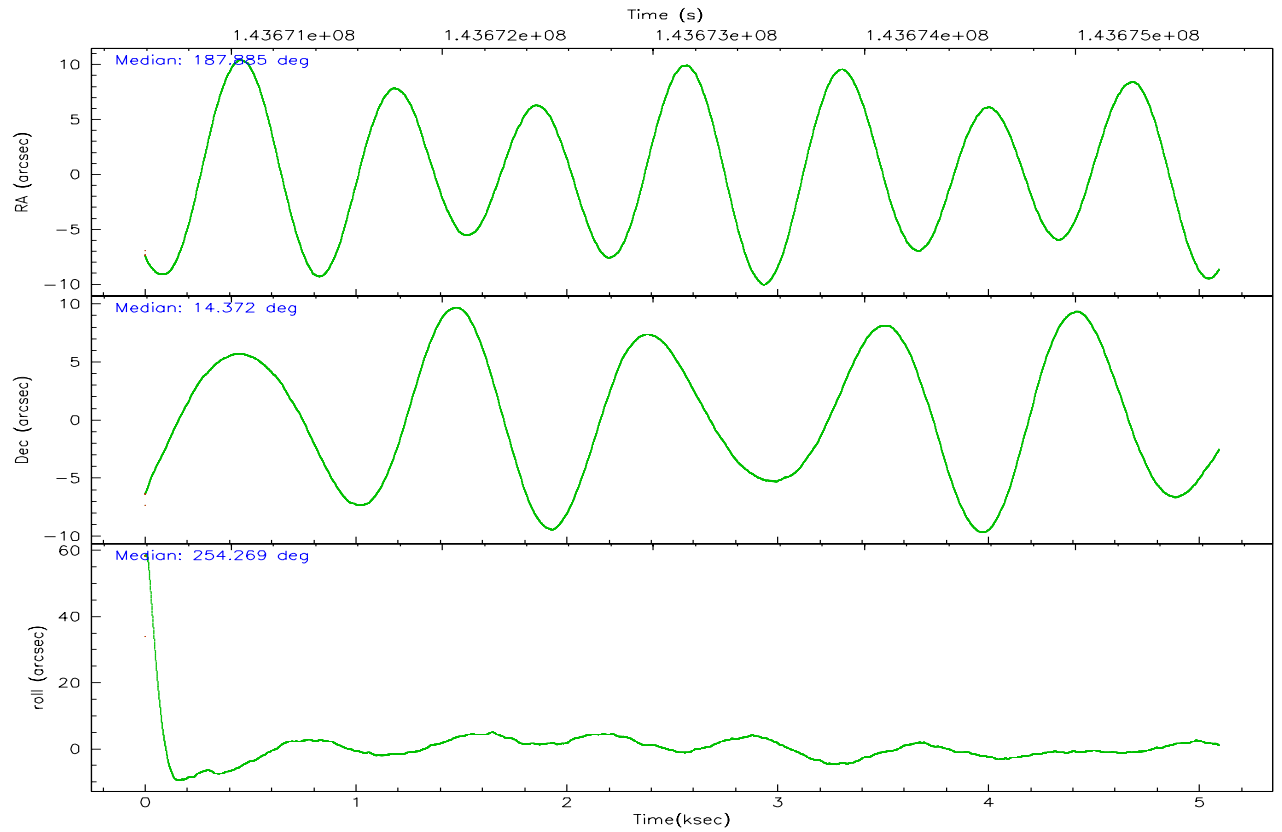
	ccd 2	ccd 3	ccd 5	ccd 6	ccd 7	ccd 8
grade 0 events	1168	1122	4854	1187	1312	2180
	6%	6%	17%	6%	5%	9%
grade 1 events	6	8	58	7	72	15
	0%	0%	0%	0%	0%	0%
grade 2 events	466	451	3880	459	3090	1031
	2%	2%	13%	2%	12%	4%
grade 3 events	203	227	361	226	861	722
	1%	1%	1%	1%	3%	3%
grade 4 events	208	226	338	260	846	650
	1%	1%	1%	1%	3%	2%
grade 5 events	554	571	1128	642	1614	835
	3%	3%	4%	3%	6%	3%
grade 6 events	432	359	6238	425	6142	1271
	2%	2%	22%	2%	24%	5%
grade 7 events	14687	14120	11107	14392	10951	15651
	82%	82%	39%	81%	44%	70%

2.2 Compared Parameters

Parameter	Planned	Actual	Parameter	Planned	Actual
Instrument	ACIS	ACIS	Obspar format version number	6	6
Detector	ACIS-235678	ACIS-235678	Obspar file type	PREDICTED	ACTUAL
Grating	NONE	NONE	Obspar update status	NONE	UPDATED
Data mode	FAINT	FAINT	Number of optional ACIS chips dropped	0	0
Observation mode	POINTING	POINTING	On-chip summing requested	N	N
Pointing RA	187.877929	187.8851527140669	Subarray requested	1/2	1/2
Pointing Dec	14.398151	14.37181533559557	Subarray start row	0	257
Pointing Roll	254.123196	254.2782084846509	Subarray row count	1024	512
SIM focus pos (mm)	-0.684267	-0.6828225247311905	Alternating exposures requested	N	N
SIM defocus (mm)	0	0.001444936568705701	Primary exposure time	0.000000	1.8
SIM translation stage pos (mm)	-190.132523	-190.1425803651734			
SIM translation stage offset (mm)	0	0.01005778216563158			
Observation start time	143670785.184000	143670404.80793			
Observation start date	2002-07-21T20:32:01	2002-07-21T20:26:44			
Observation end time	143675685.184000	143676177.09567			
Observation end date	2002-07-21T21:53:41	2002-07-21T22:02:57			
Read mode	TIMED	TIMED			

2.3 Aspect



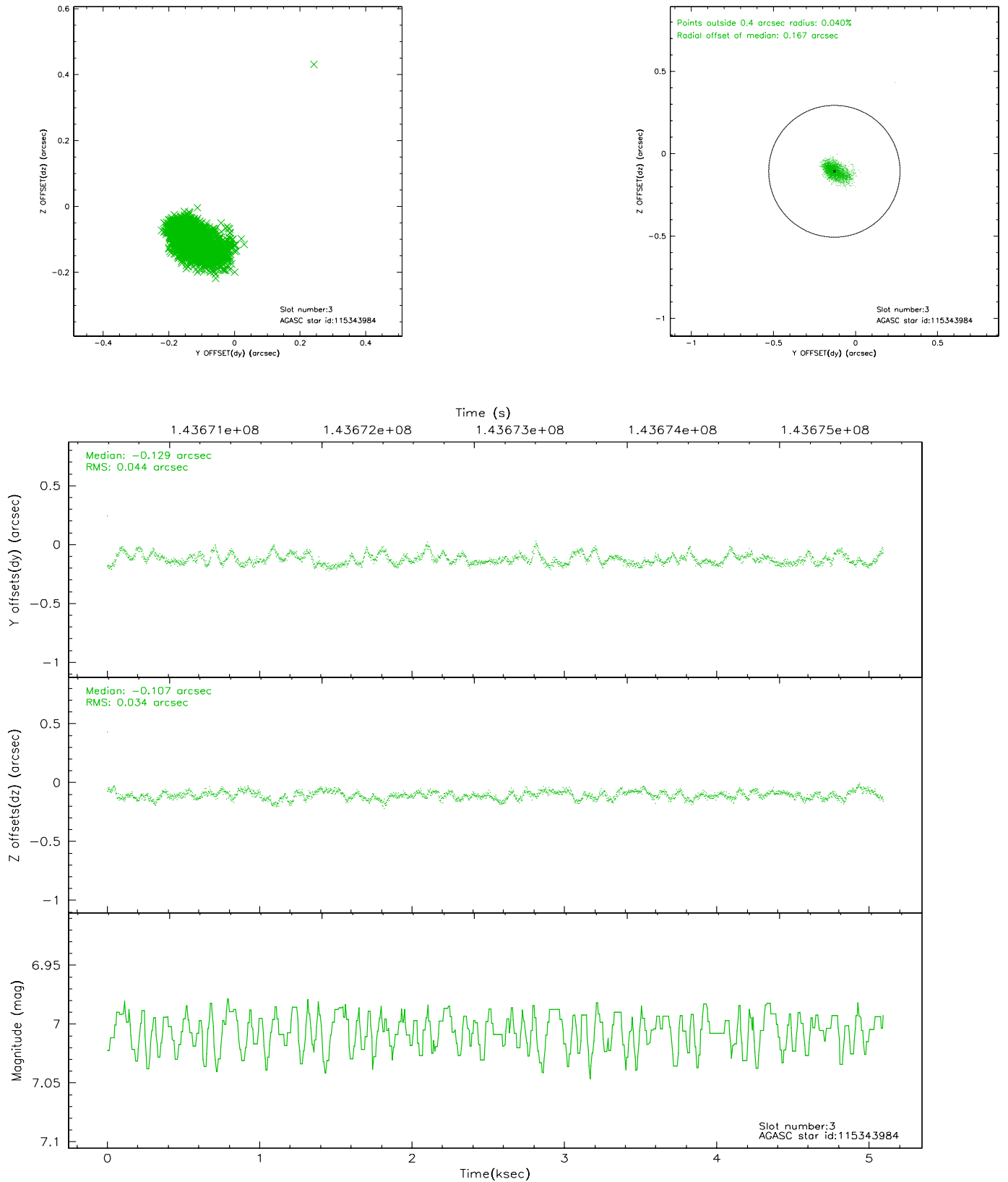


Slot Statistics

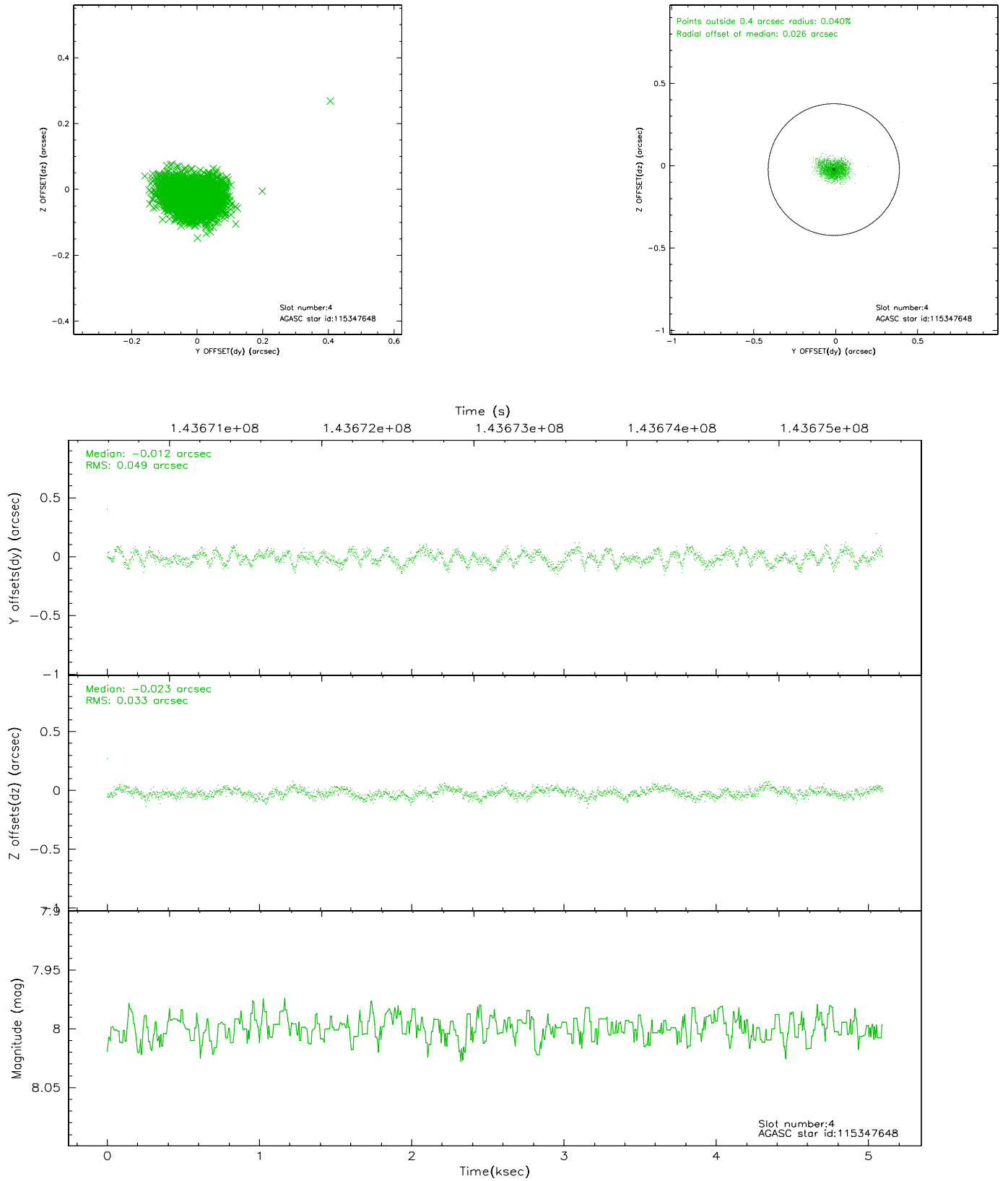
slot	status	id	mag	n_pts	med_dy	med_dz	dr1	dr2	ra	dec	mean_y	mean_z
0	FID	ACIS-S-2	7.11	1243	0.004	0.026	0.007	0.011	0.000000	0.000000	-755.12	-1729.43
1	FID	ACIS-S-4	7.19	1243	-0.084	-0.009	0.005	0.009	0.000000	0.000000	2157.55	177.76
2	FID	ACIS-S-5	7.24	1243	0.049	-0.008	0.006	0.011	0.000000	0.000000	-1806.36	172.83
3	GUIDE	115343984	7.01	2486	-0.129	-0.107	0.056	0.097	187.445111	14.650185	-460.61	-1699.08
4	GUIDE	115347648	8.00	2485	-0.012	-0.023	0.063	0.100	187.273687	13.950334	2126.55	-1590.94
5	GUIDE	115350296	9.11	2485	0.201	-0.130	0.084	0.141	187.140806	13.950701	2252.37	-2038.27
6	GUIDE	115343960	8.74	2485	-0.037	0.116	0.086	0.135	188.590007	14.643744	-1531.24	2141.51
7	GUIDE	115347720	9.49	2485	-0.018	0.140	0.113	0.181	188.304790	13.999135	972.50	1827.75

2.4 Star Slots

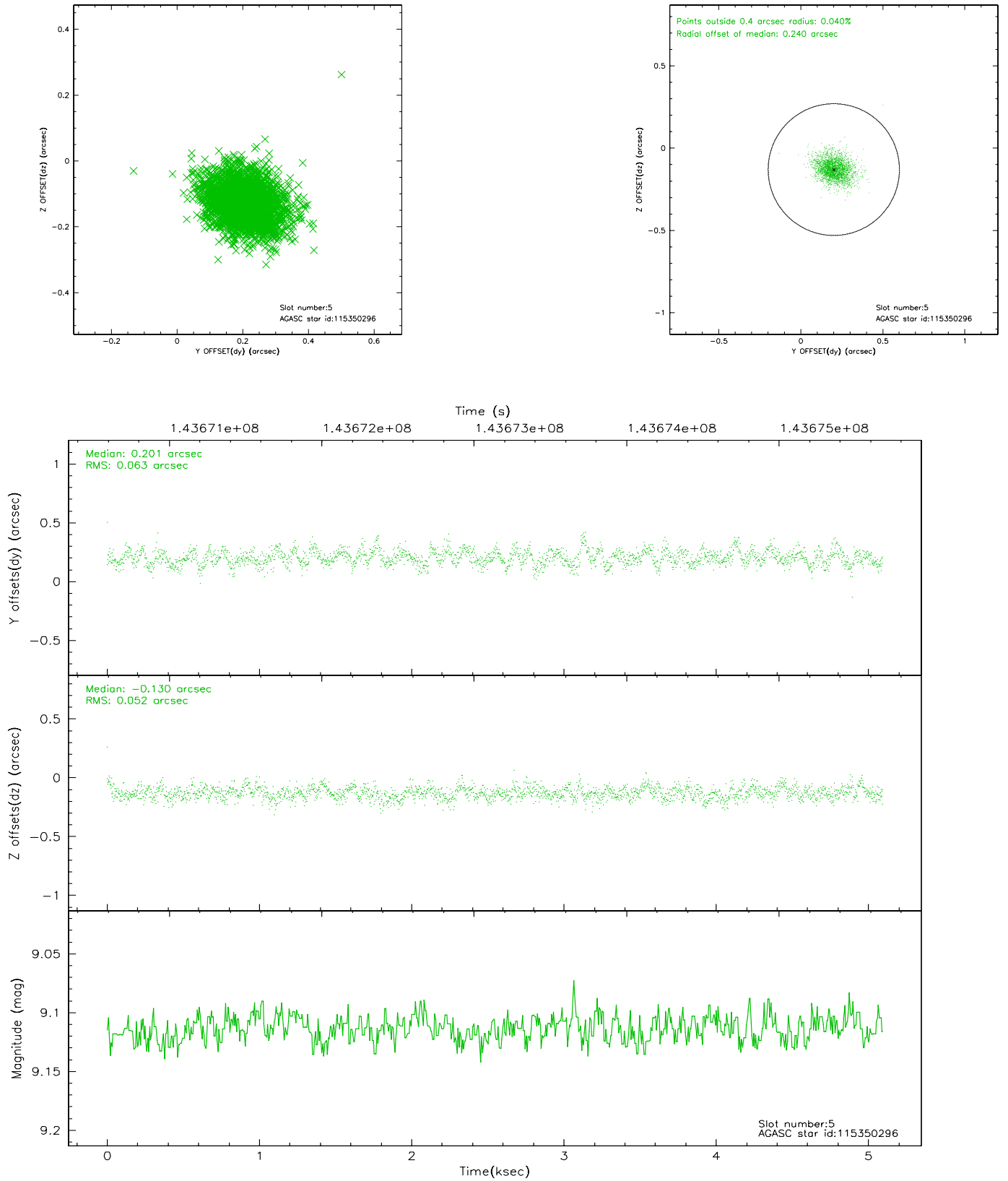
2.4.1 Slot 3



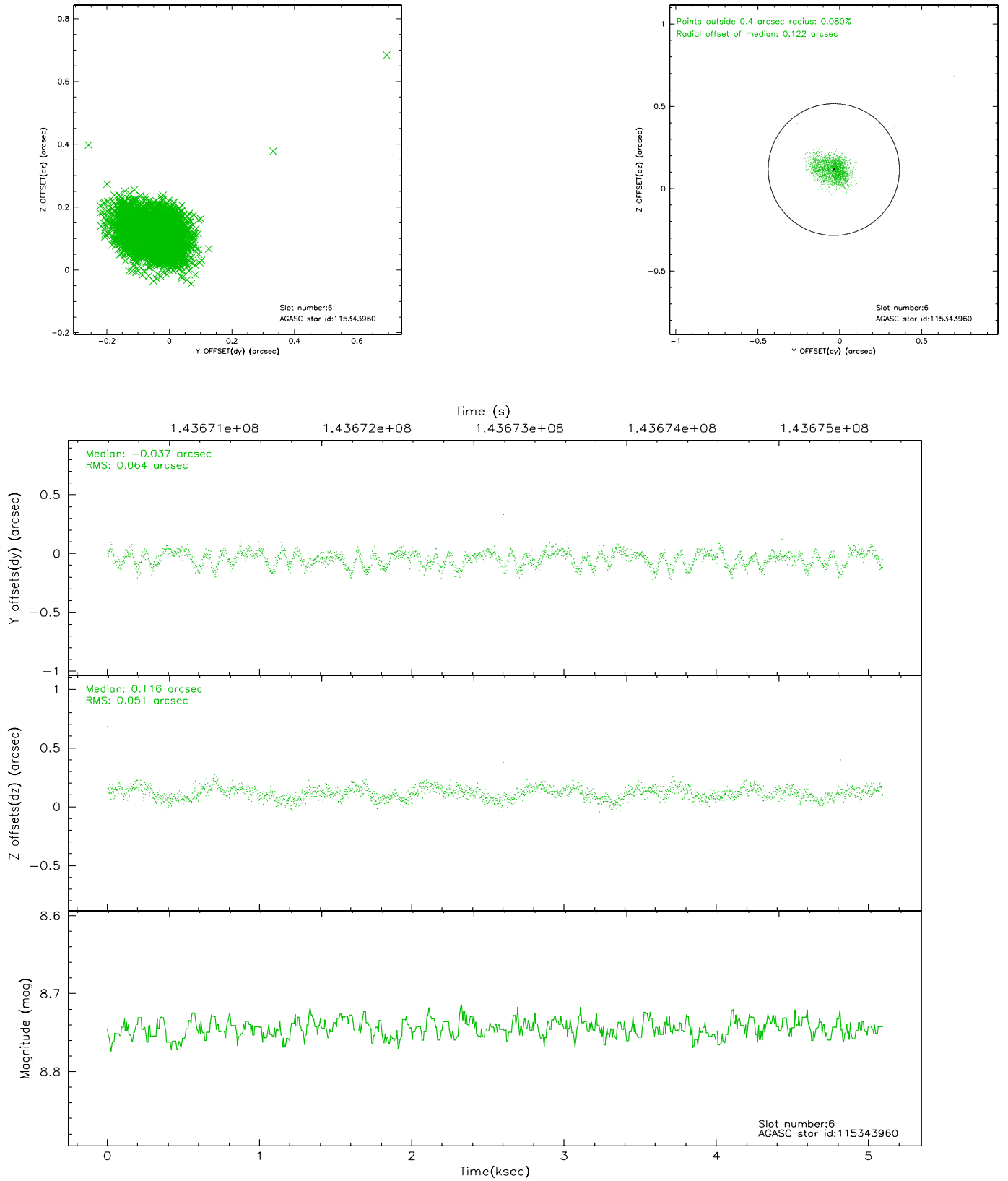
2.4.2 Slot 4



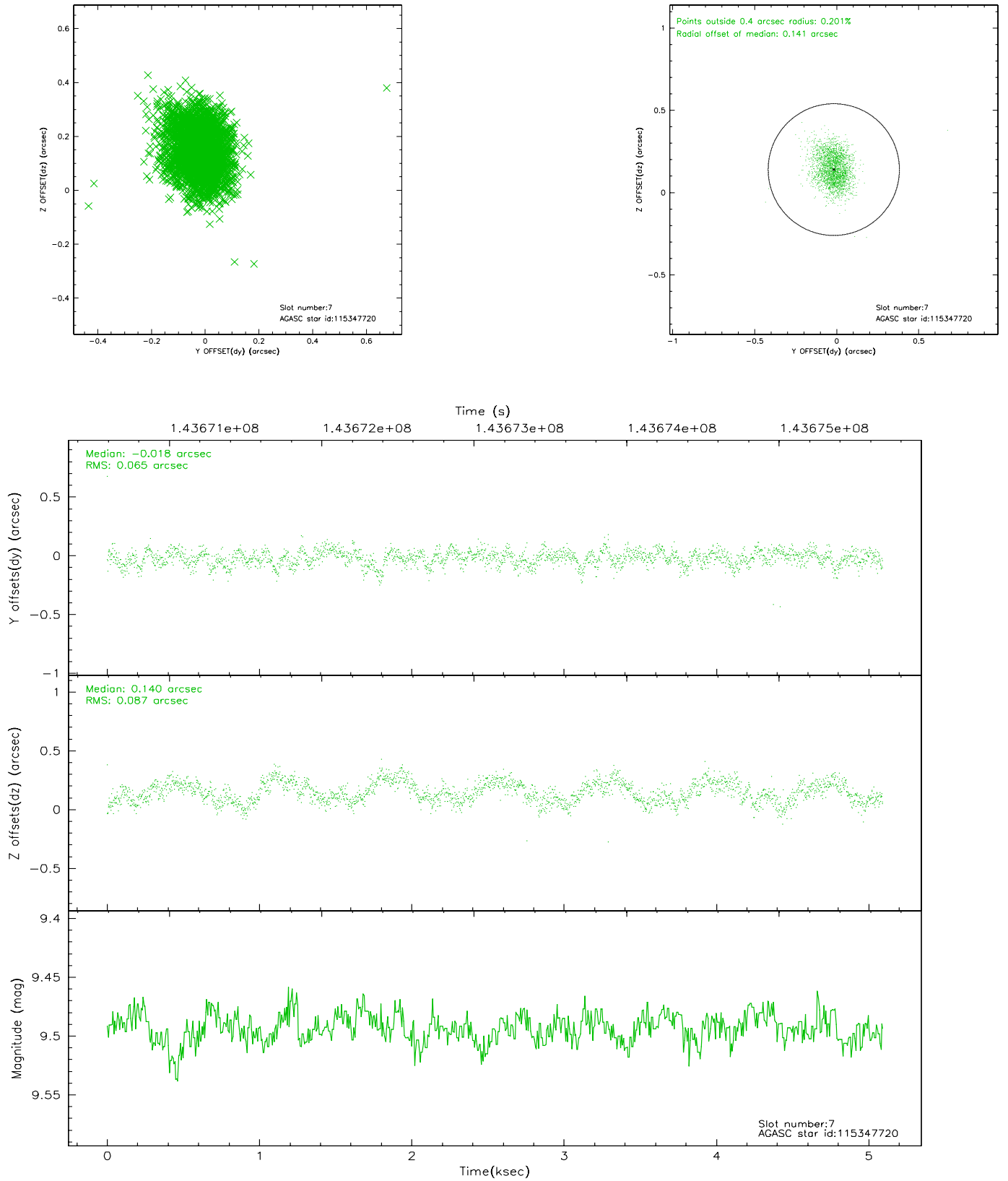
2.4.3 Slot 5



2.4.4 Slot 6

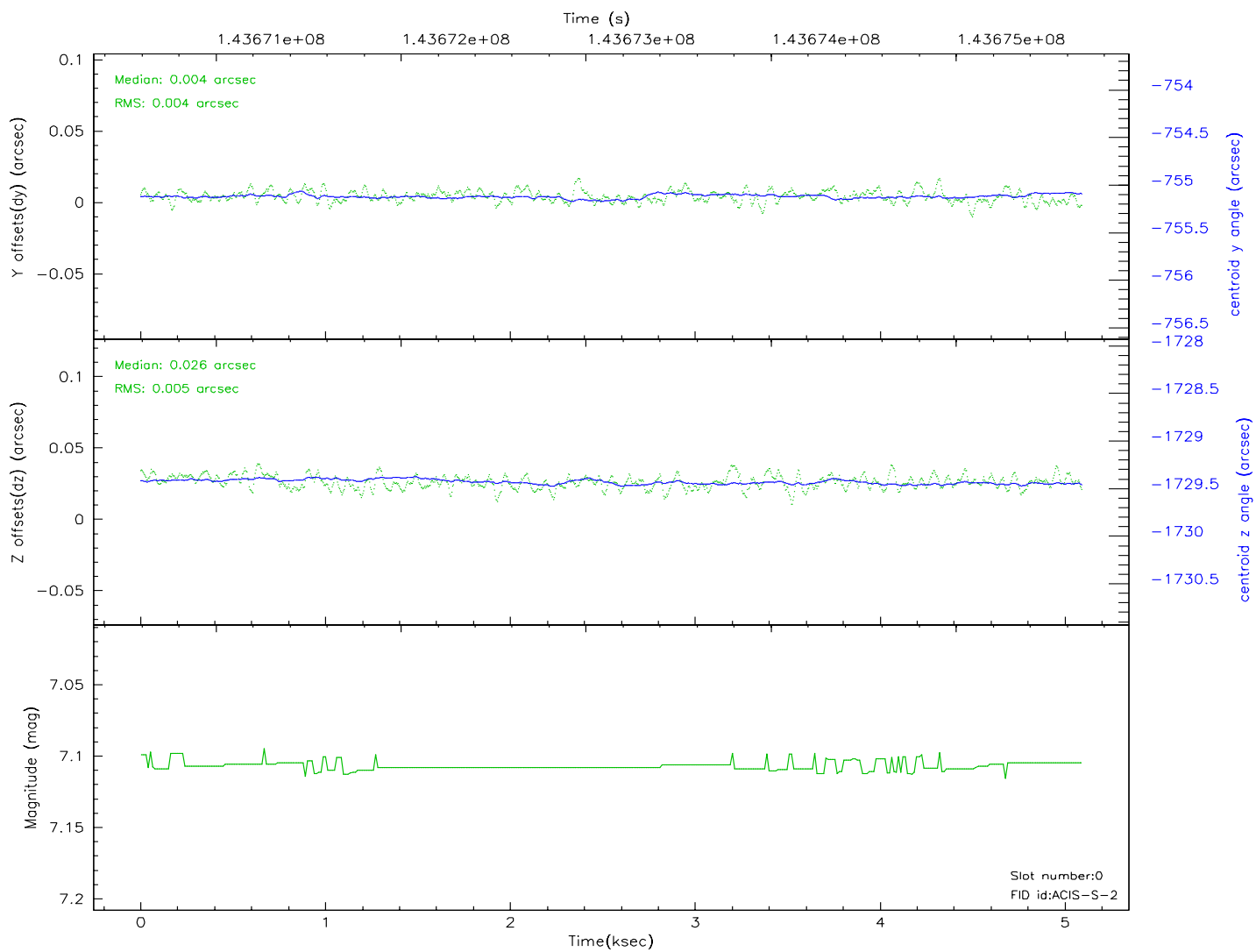
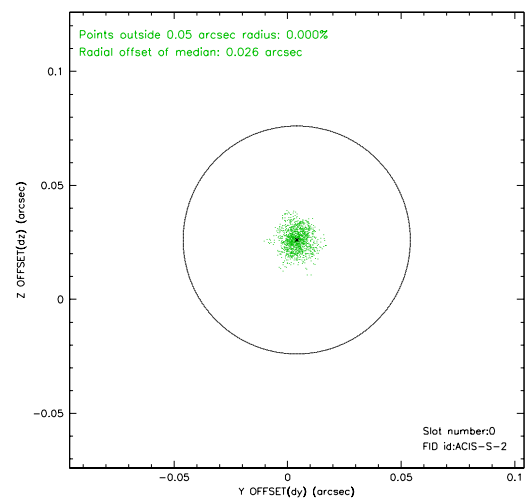
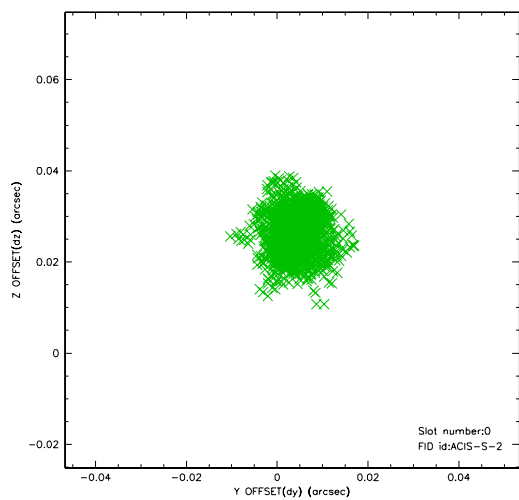


2.4.5 Slot 7

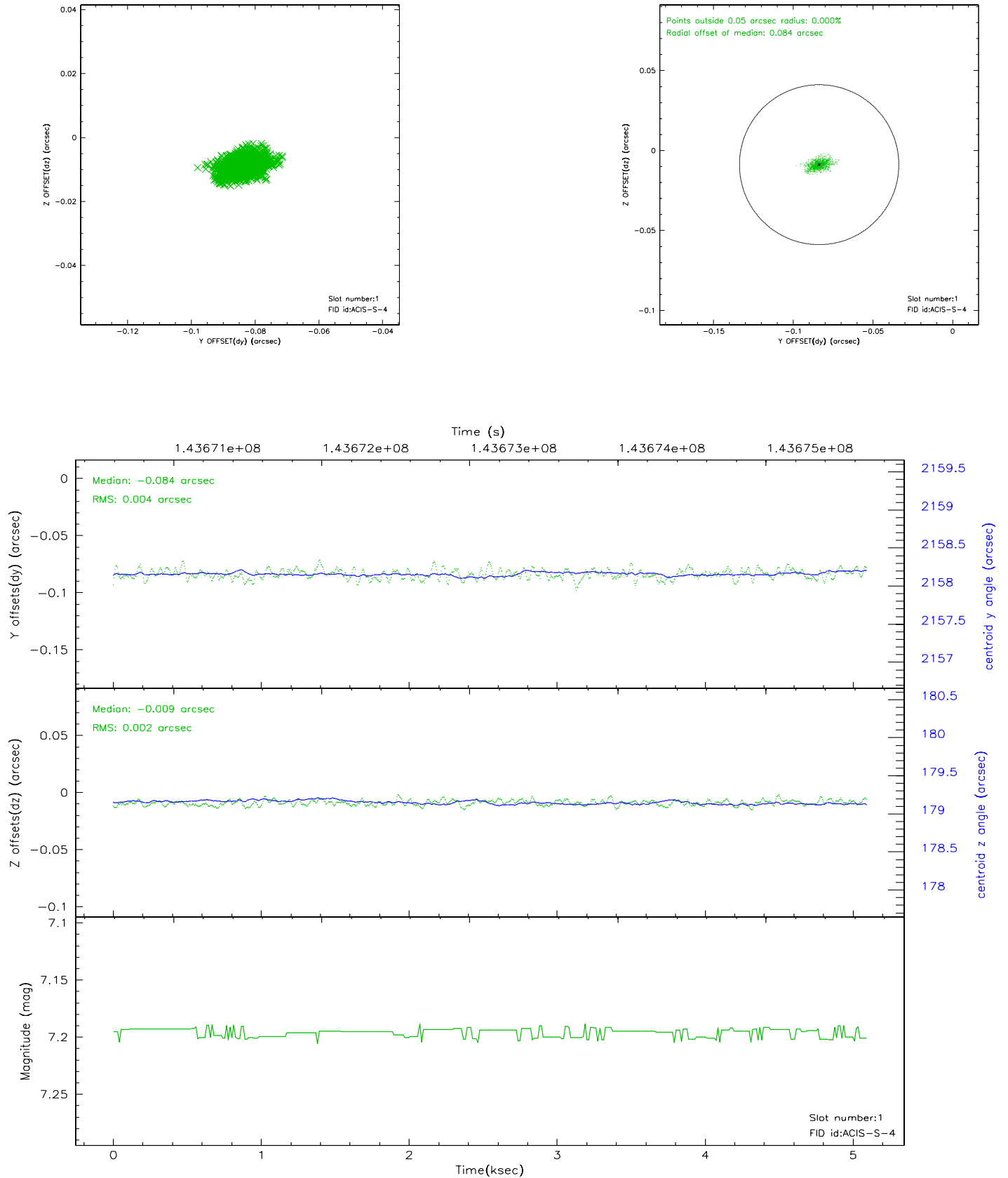


2.5 FID Slots

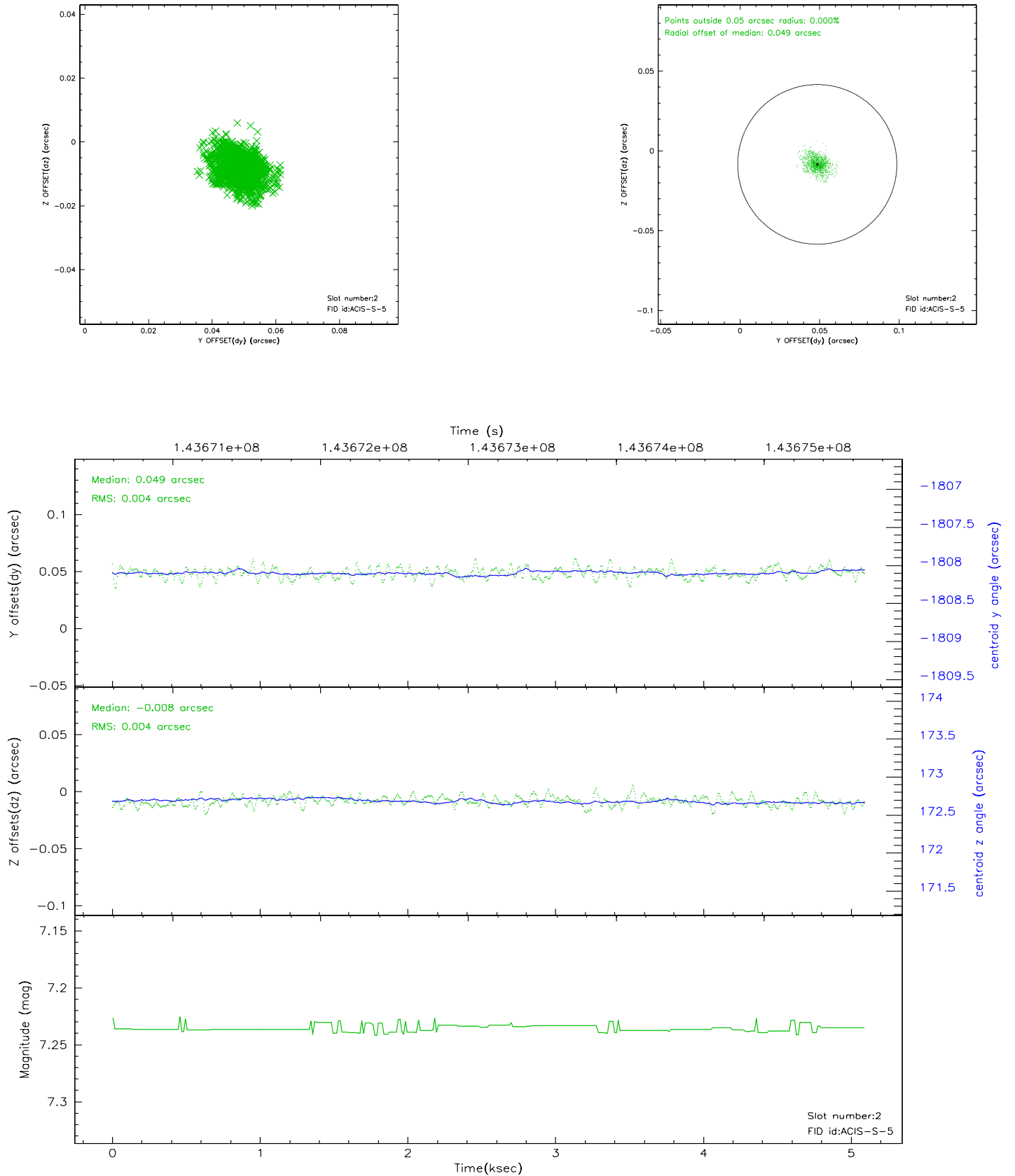
2.5.1 Slot 0



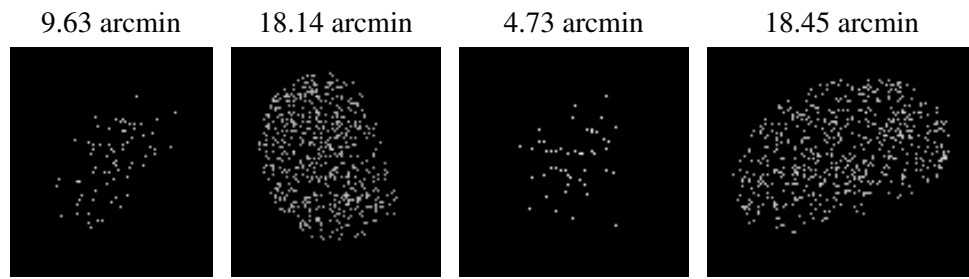
2.5.2 Slot 1



2.5.3 Slot 2



3 Point Sources



A Summary

A.1 Status

V&V Scientist	Jen Lauer
V&V Date (YYYY-MM-DD)	2006.09.26
V&V Edition	1
V&V Disposition and Status	OK
V&V Charge Time	4.662

A.2 Comments