

V&V Reference Report

L2 ASCDS Version : 7.6.8.1

Observation 3084 - L2 Version 001
Chandra X-Ray Center

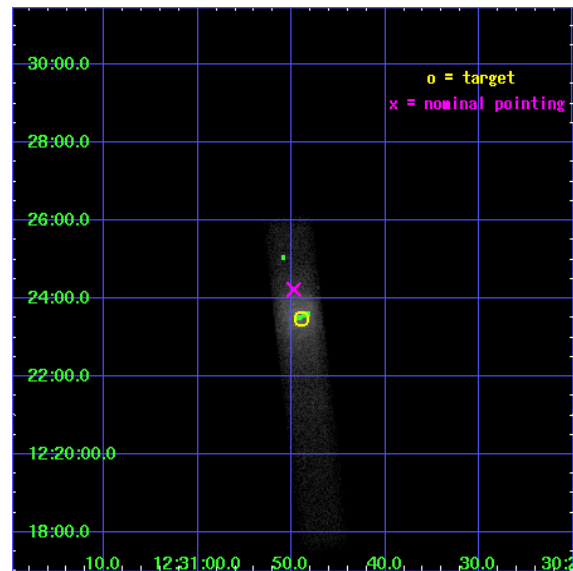
L2 Processing Date : Aug 31 2006

Contents

1	Front	2
2	OBI	3
2.1	OBI	3
2.1.1	Images	3
2.1.2	Bias	3
2.1.3	Parameters	4
2.1.4	Events	4
2.2	Compared Parameters	5
2.3	Aspect	6
2.4	Star Slots	9
2.4.1	Slot 3	9
2.4.2	Slot 4	10
2.4.3	Slot 5	11
2.4.4	Slot 6	12
2.4.5	Slot 7	13
2.5	FID Slots	14
2.5.1	Slot 0	14
2.5.2	Slot 1	15
2.5.3	Slot 2	16
3	Point Sources	17
A	Summary	18
A.1	Status	18
A.2	Comments	18

1 Front

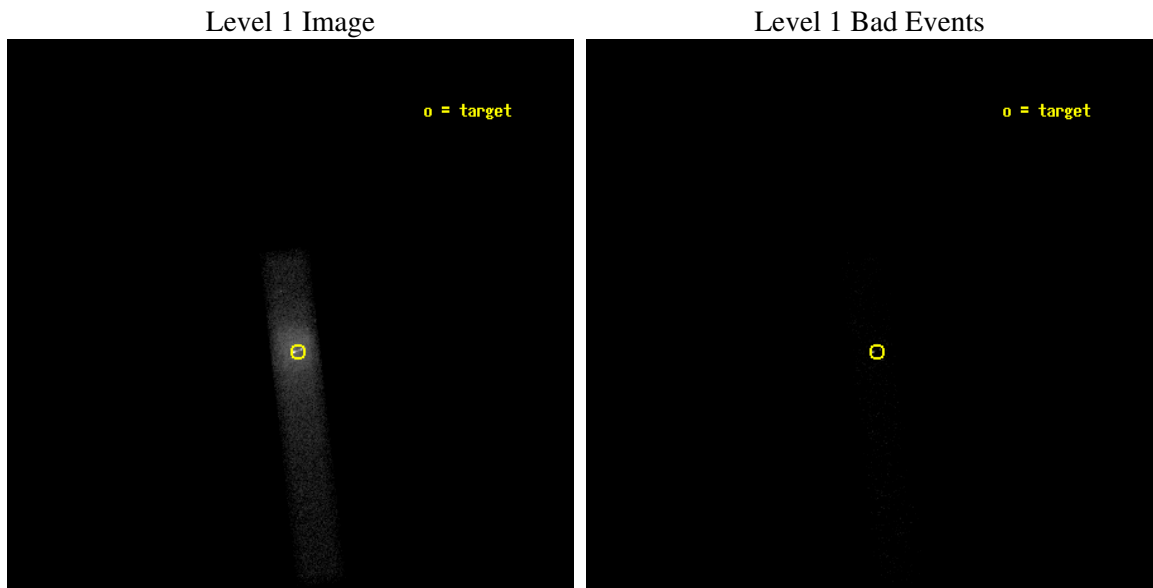
seq_num	700523
obs_id	3084
title	X-RAY VARIABILITY IN THE JET AND CORE OF M87
observer	Dr. Daniel Harris
object	M87
dtcycle	0
cycle	P
ra_targ	187.704167
dec_targ	12.391667
ra_nom	187.70740949116
dec_nom	12.403807752868
roll_nom	83.389090095813
revision	2
ontime	5132.4000764787
livetime	4654.8159590774
ontime7	5132.4000764787
l2events	59091



2 OBI

2.1 OBI

2.1.1 Images



2.1.2 Bias

Chip 7



2.1.3 Parameters

obi_num	2
ascdsver	7.6.8.1
caldsver	3.2.3
date	2006-08-31T21:37:49
revision	2

sched_exp_time	5000.000000
ontime	6183.3022595197
ontime7	6183.3022595197
l1events	66981

2.1.4 Events

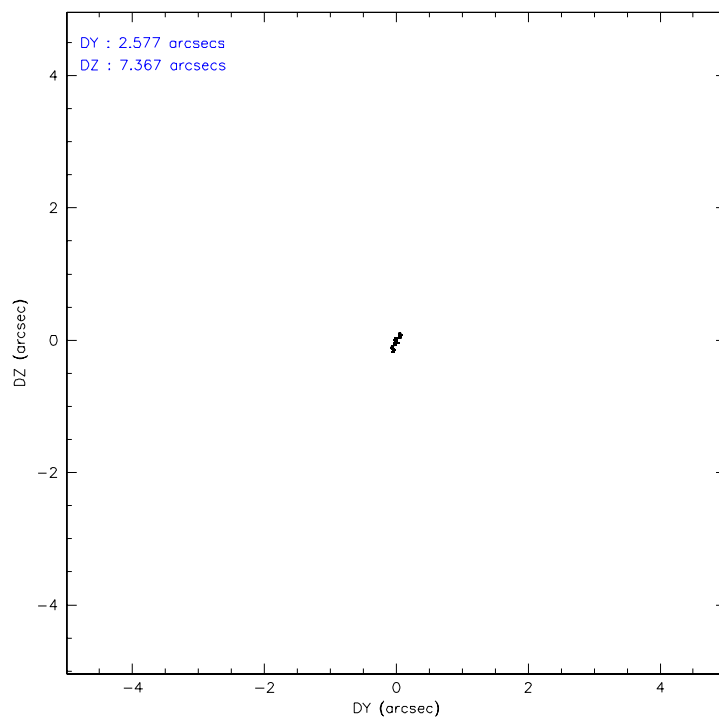
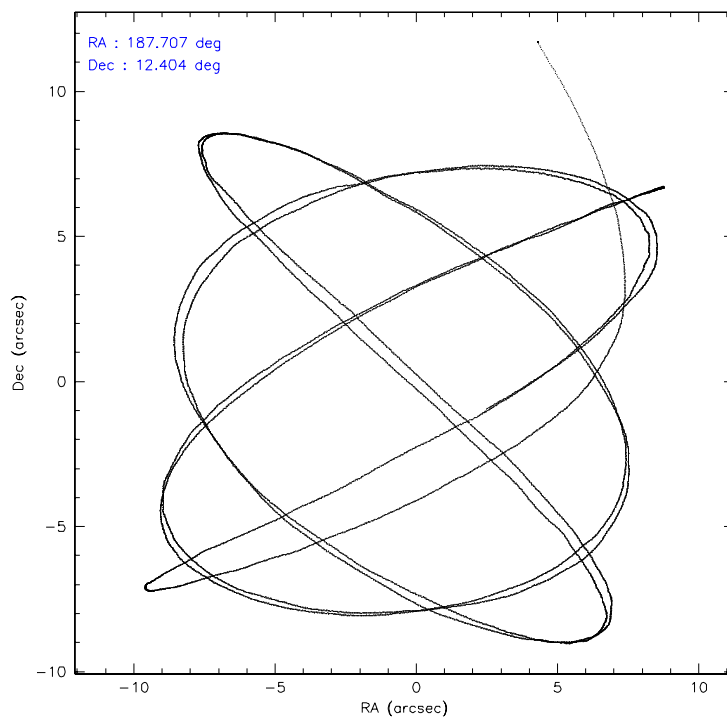
	ccd 7
level 1 events	66981
rejected events	7225
rejected %	10%

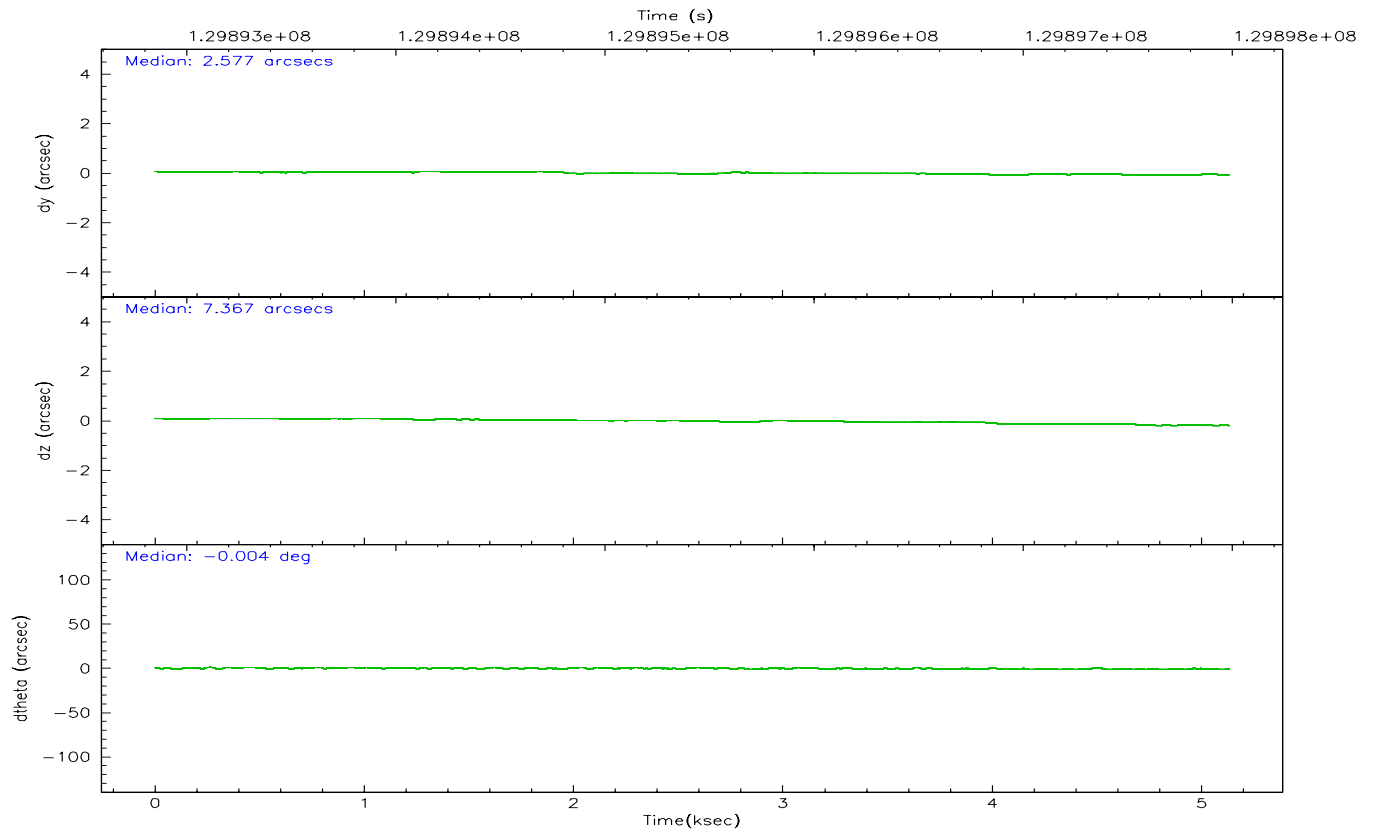
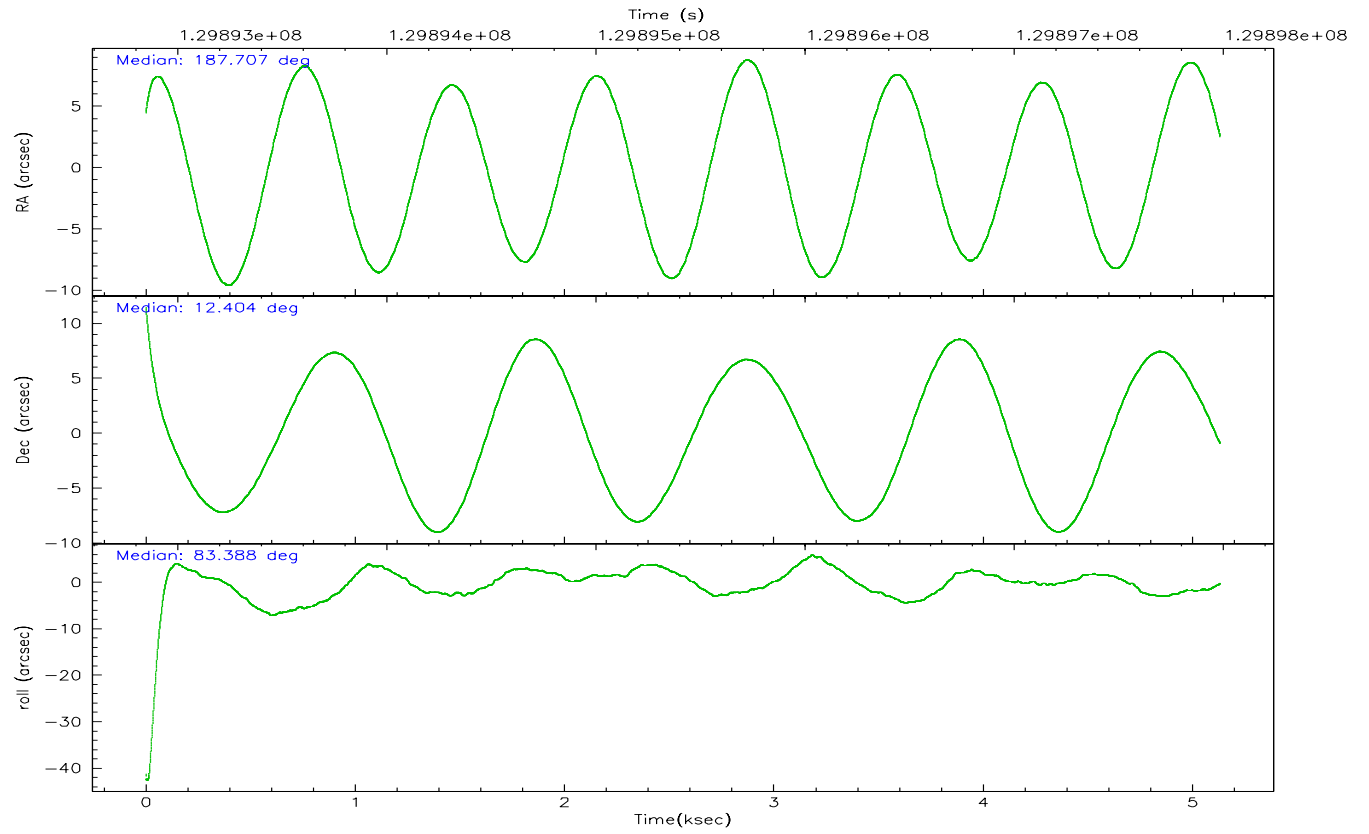
	ccd 7
grade 0 events	19372
	28%
grade 1 events	69
	0%
grade 2 events	16611
	24%
grade 3 events	7189
	10%
grade 4 events	6948
	10%
grade 5 events	1026
	1%
grade 6 events	12002
	17%
grade 7 events	3764
	5%

2.2 Compared Parameters

Parameter	Planned	Actual	Parameter	Planned	Actual
Instrument	ACIS	ACIS	Obspar format version number	6	6
Detector	ACIS-7	ACIS-7	Obspar file type	PREDICTED	ACTUAL
Grating	NONE	NONE	Obspar update status	NONE	UPDATED
Data mode	FAINT	FAINT	On-chip summing requested	N	N
Observation mode	POINTING	POINTING	Subarray requested	1/8	1/8
Pointing RA	187.718771	187.7074094911575	Subarray start row	0	449
Pointing Dec	12.378892	12.40380775286787	Subarray row count	1024	128
Pointing Roll	83.230137	83.38909009581295	Alternating exposures requested	N	N
SIM focus pos (mm)	-0.684267	-0.6828225247311905	Primary exposure time	0.000000	0.4
SIM defocus (mm)	0	0.001444936568705701			
SIM translation stage pos (mm)	-190.132523	-190.1400660498719			
SIM translation stage offset (mm)	0	0.00754346686406393			
Observation start time	129892981.184000	129891798.18427			
Observation start date	2002-02-12T09:21:57	2002-02-12T09:03:18			
Observation end time	129897981.184000	129898790.73455			
Observation end date	2002-02-12T10:45:17	2002-02-12T10:59:50			
Read mode	TIMED	TIMED			

2.3 Aspect



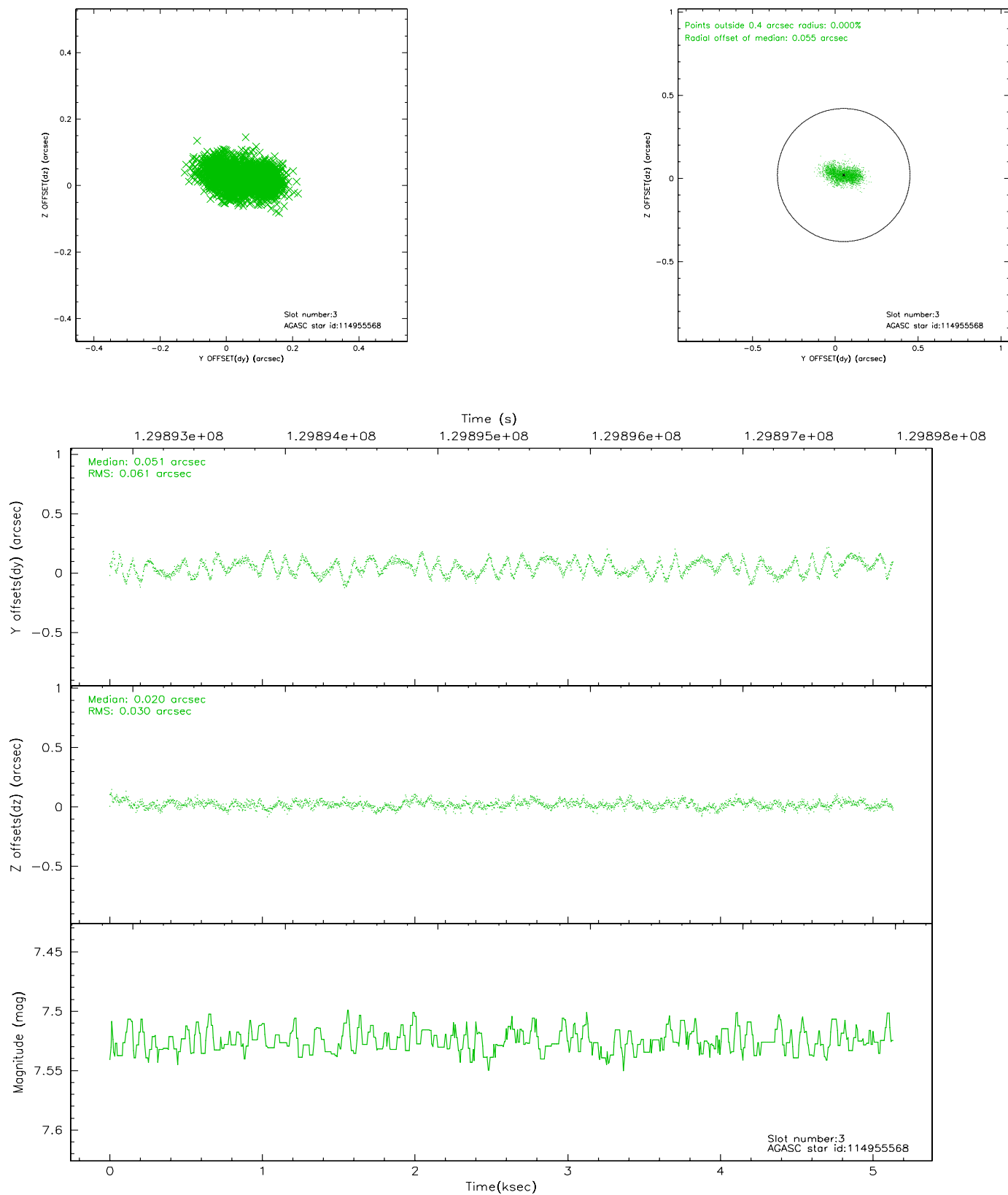


Slot Statistics

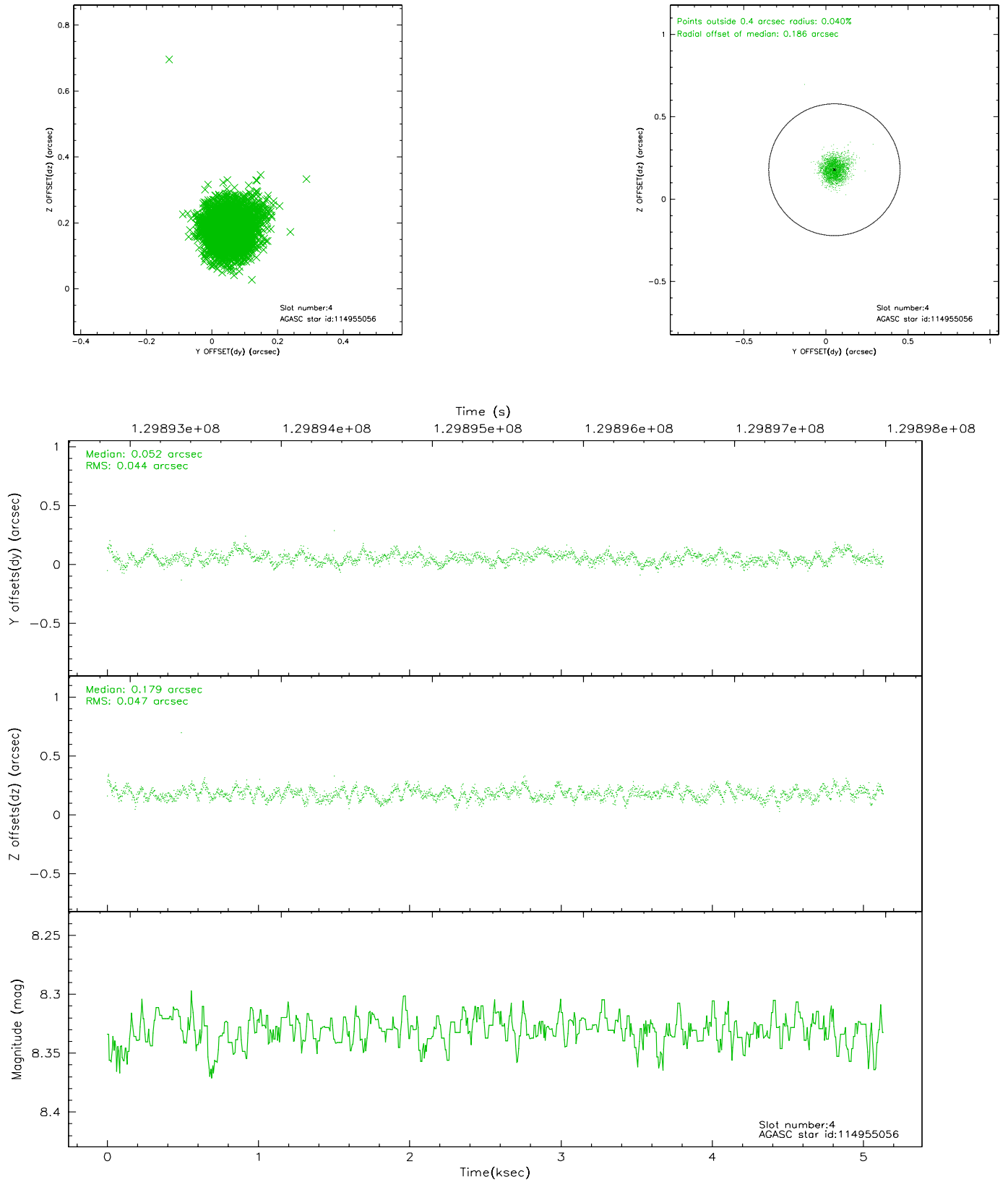
slot	status	id	mag	n_pts	med_dy	med_dz	dr1	dr2	ra	dec	mean_y	mean_z
0	FID	ACIS-S-2	7.11	1252	0.005	0.033	0.007	0.012	0.000000	0.000000	-755.21	-1728.49
1	FID	ACIS-S-4	7.20	1252	-0.101	-0.011	0.005	0.009	0.000000	0.000000	2157.43	178.72
2	FID	ACIS-S-5	7.23	1250	0.065	-0.013	0.007	0.011	0.000000	0.000000	-1806.46	173.74
3	GUIDE	114955568	7.53	2505	0.051	0.020	0.074	0.114	187.061916	11.826551	-2244.85	2064.14
4	GUIDE	114955056	8.33	2504	0.052	0.179	0.067	0.108	187.914001	12.127854	-817.16	-788.09
5	GUIDE	114952824	8.55	2502	-0.072	-0.050	0.066	0.104	187.703904	12.486727	378.78	97.13
6	GUIDE	115348424	9.52	2505	-0.031	0.051	0.116	0.191	187.199498	13.087929	2321.82	2109.29
7	GUIDE	114952792	9.52	2504	-0.004	-0.198	0.096	0.156	187.070263	12.344747	-387.58	2251.16

2.4 Star Slots

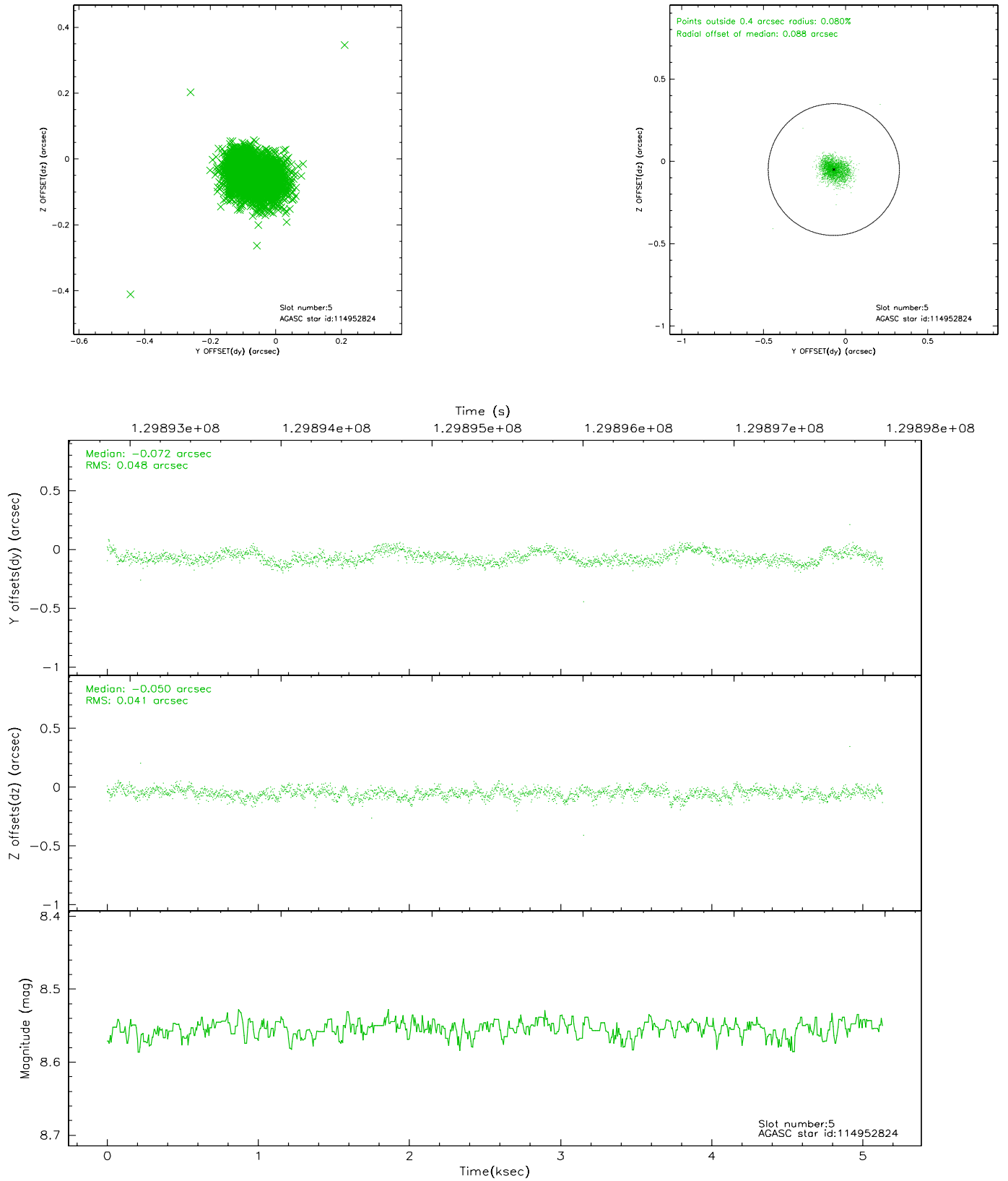
2.4.1 Slot 3



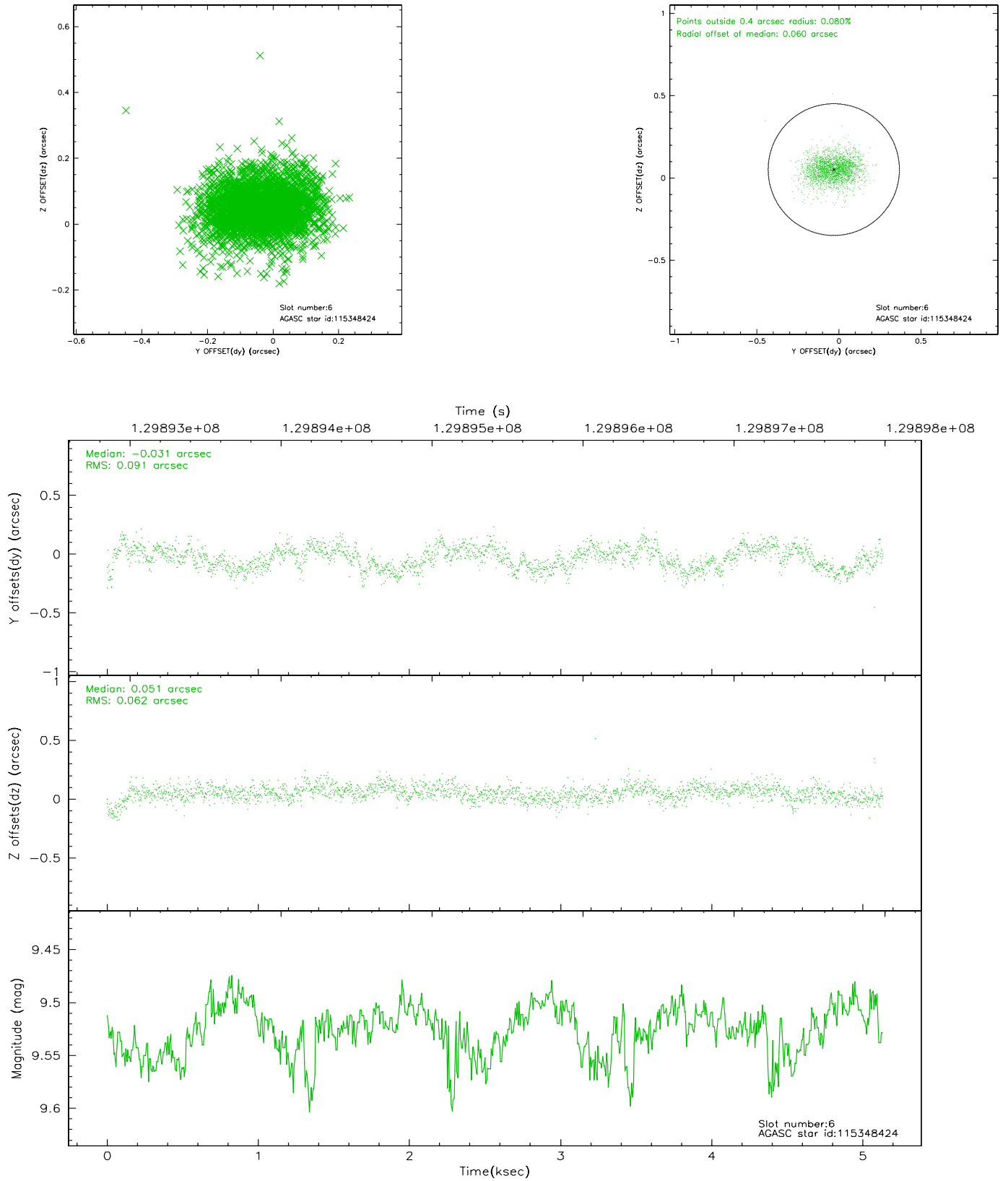
2.4.2 Slot 4



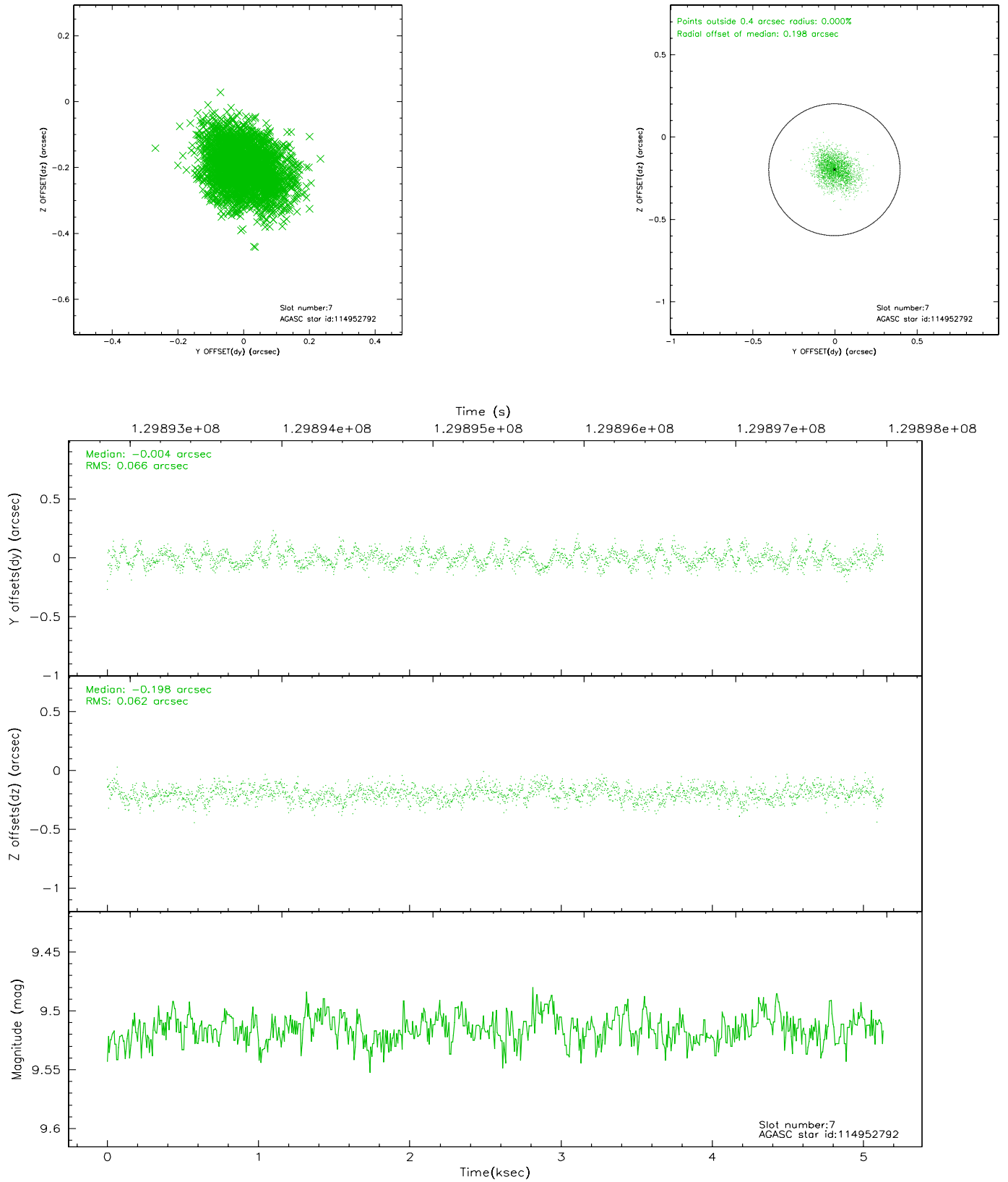
2.4.3 Slot 5



2.4.4 Slot 6

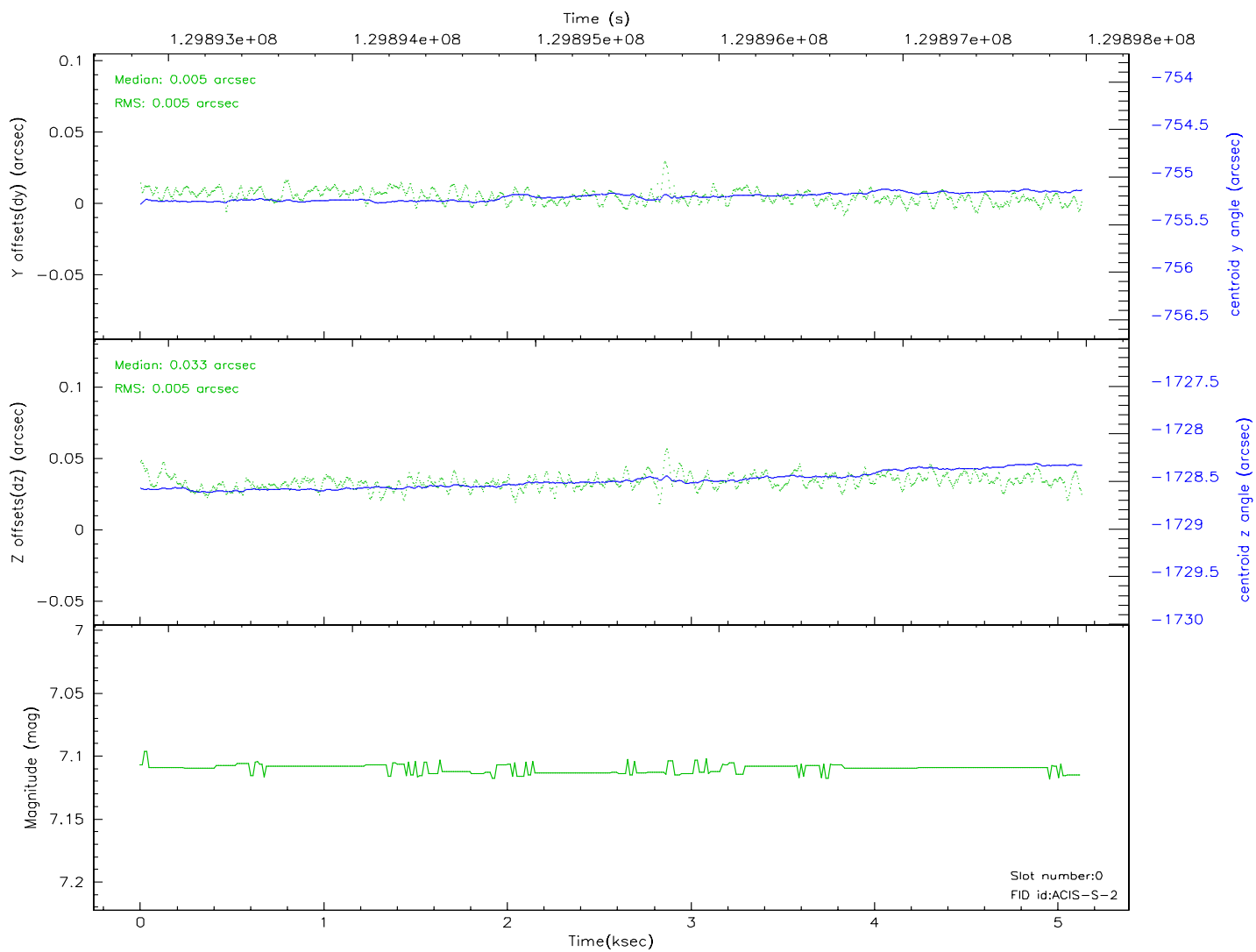
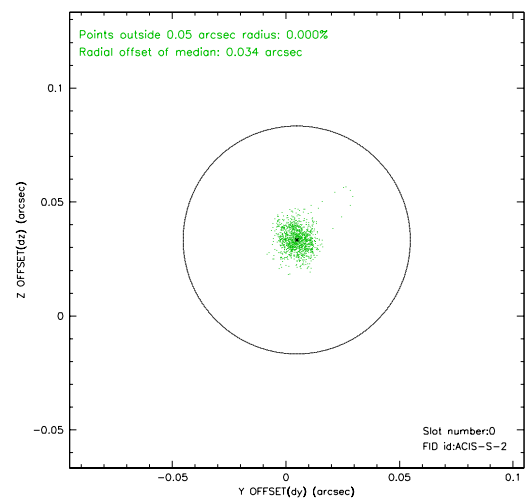
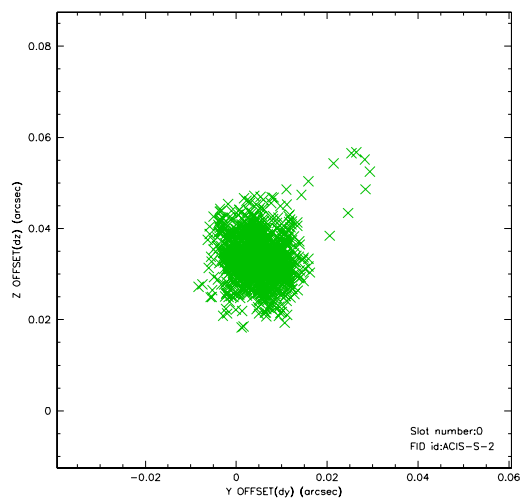


2.4.5 Slot 7

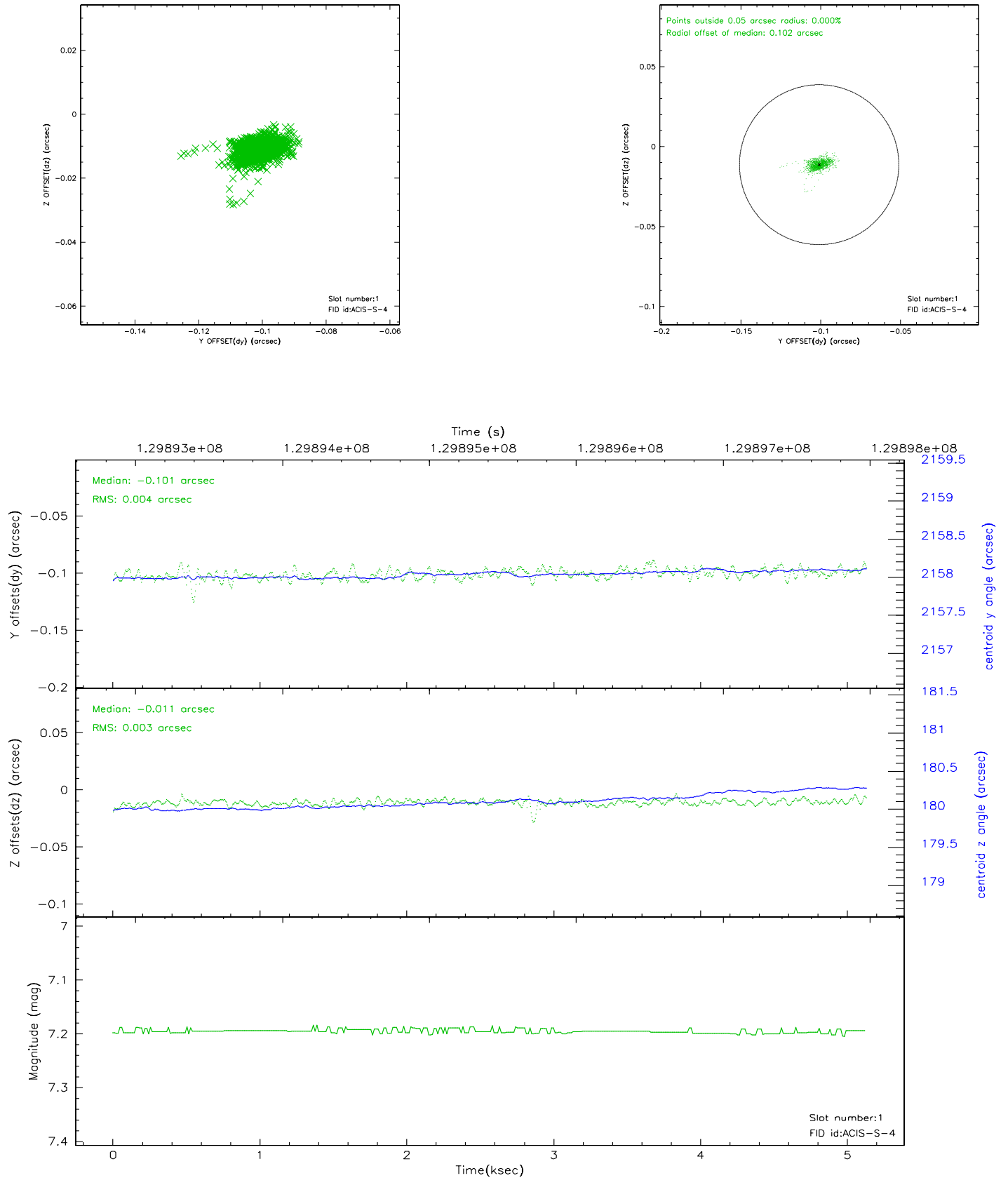


2.5 FID Slots

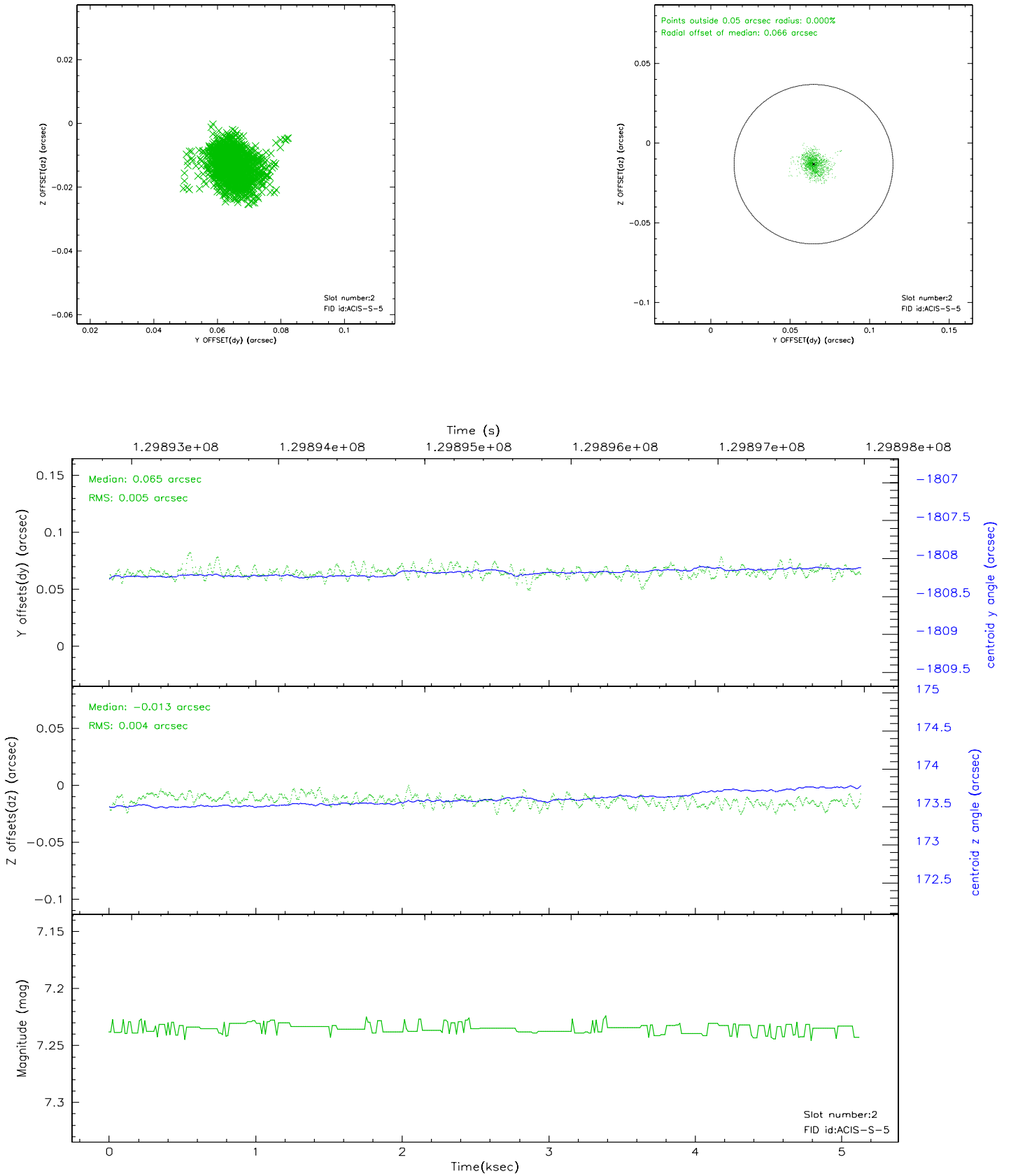
2.5.1 Slot 0



2.5.2 Slot 1



2.5.3 Slot 2



3 Point Sources

A Summary

A.1 Status

V&V Scientist	Jen Lauer
V&V Date (YYYY-MM-DD)	2006.09.01
V&V Edition	1
V&V Disposition and Status	OK
V&V Charge Time	5.132

A.2 Comments