

# V&V Reference Report

## L2 ASCDS Version : 7.6.8

Observation 2924 - L2 Version 001  
Chandra X-Ray Center

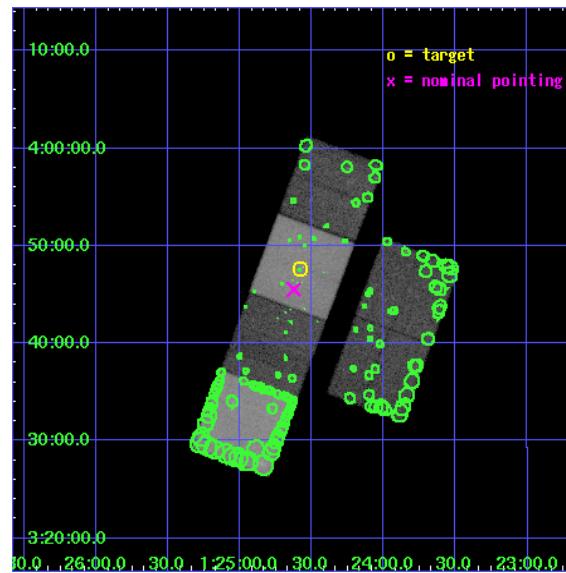
L2 Processing Date : Jul 20 2006

## Contents

<b>1</b>	<b>Front</b>	<b>2</b>
<b>2</b>	<b>OBI</b>	<b>3</b>
2.1	OBI . . . . .	3
2.1.1	Images . . . . .	3
2.1.2	Bias . . . . .	3
2.1.3	Parameters . . . . .	4
2.1.4	Events . . . . .	4
2.2	Compared Parameters . . . . .	5
2.3	Aspect . . . . .	6
2.4	Star Slots . . . . .	9
2.4.1	Slot 3 . . . . .	9
2.4.2	Slot 4 . . . . .	10
2.4.3	Slot 5 . . . . .	11
2.4.4	Slot 6 . . . . .	12
2.4.5	Slot 7 . . . . .	13
2.5	FID Slots . . . . .	14
2.5.1	Slot 0 . . . . .	14
2.5.2	Slot 1 . . . . .	15
2.5.3	Slot 2 . . . . .	16
<b>3</b>	<b>Point Sources</b>	<b>17</b>
<b>A</b>	<b>Summary</b>	<b>18</b>
A.1	Status . . . . .	18
A.2	Comments . . . . .	18

# 1 Front

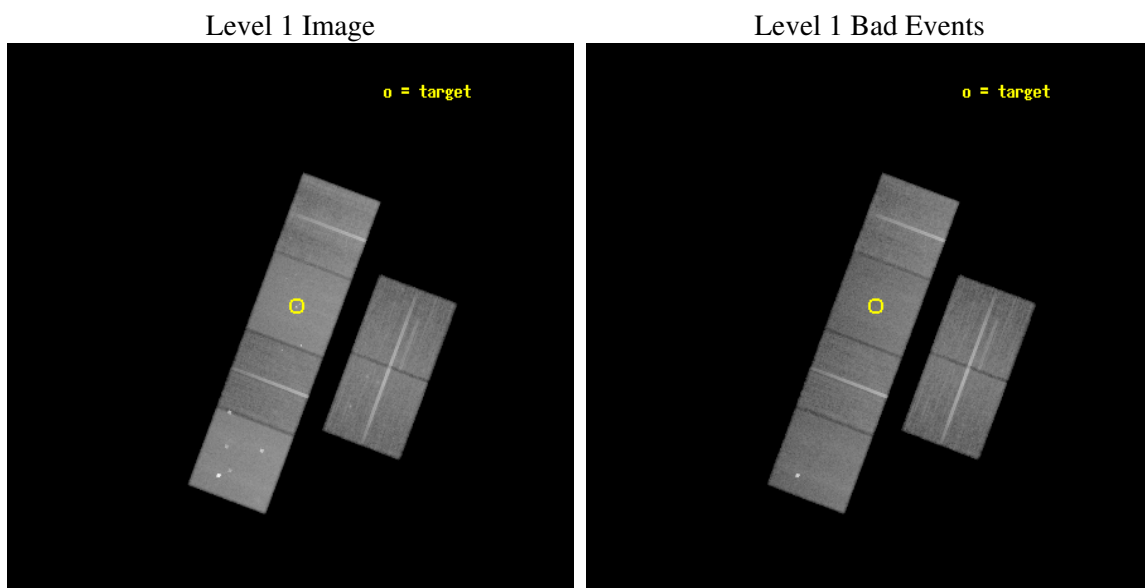
seq_num	600261
obs_id	2924
title	NGC 520: AN ANOMALOUS GALAXY MERGER?
observer	Dr. Andrew Read
object	NGC520
dtcycle	0
cycle	P
ra_targ	21.145
dec_targ	3.794361
ra_nom	21.156438939093
dec_nom	3.7587706547315
roll_nom	290.50246091784
revision	2
ontime	49961.599813879
livetime	49328.955953772
ontime2	49961.599813879
ontime3	49961.599813879
ontime5	49961.599813879
ontime6	49955.117883354
ontime7	49961.599813879
ontime8	49961.599813879
l2events	518314



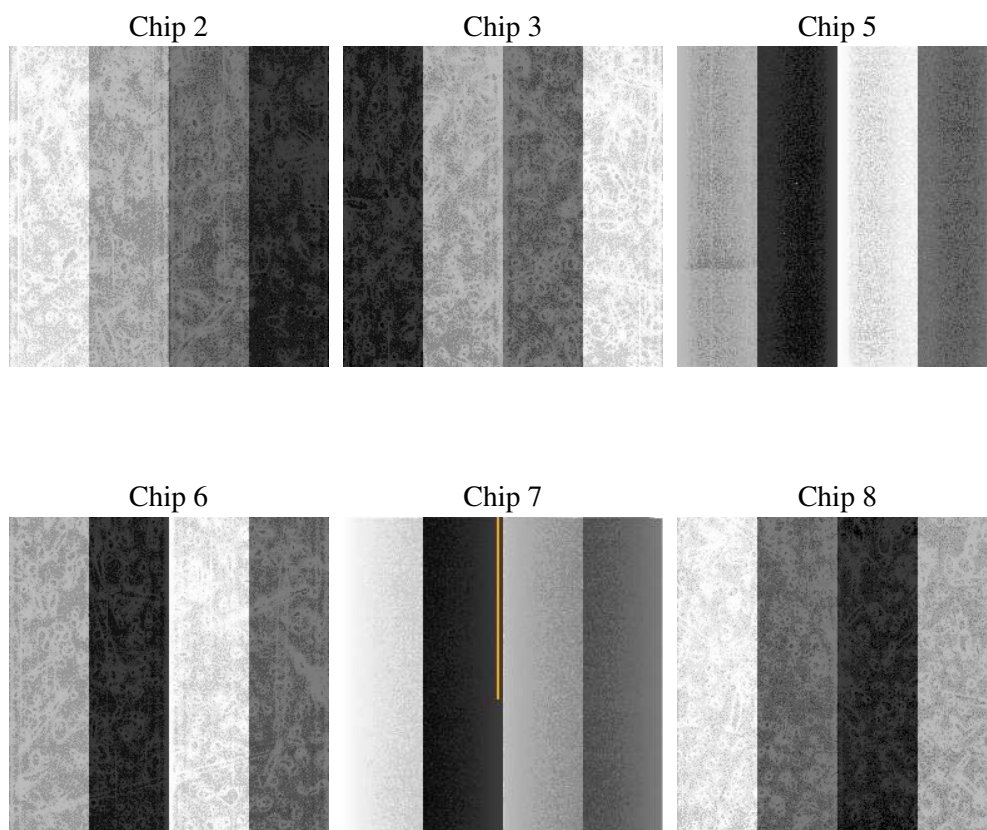
## 2 OBI

### 2.1 OBI

#### 2.1.1 Images



#### 2.1.2 Bias



### 2.1.3 Parameters

obi_num	0
ascdsver	7.6.8
caldsver	3.2.2
date	2006-07-20T08:38:57
revision	2

sched_exp_time	50000.000000
ontime	49966.50240621
ontime2	49966.50240621
ontime3	49966.50240621
ontime5	49966.50240621
ontime6	49960.020475686
ontime7	49966.50240621
ontime8	49966.50240621
l1events	2219829

### 2.1.4 Events

	ccd 2	ccd 3	ccd 5	ccd 6	ccd 7	ccd 8
level 1 events	312204	297991	482469	308368	431988	386809
rejected events	273707	260849	256673	269362	253037	305537
rejected %	87%	87%	53%	87%	58%	78%

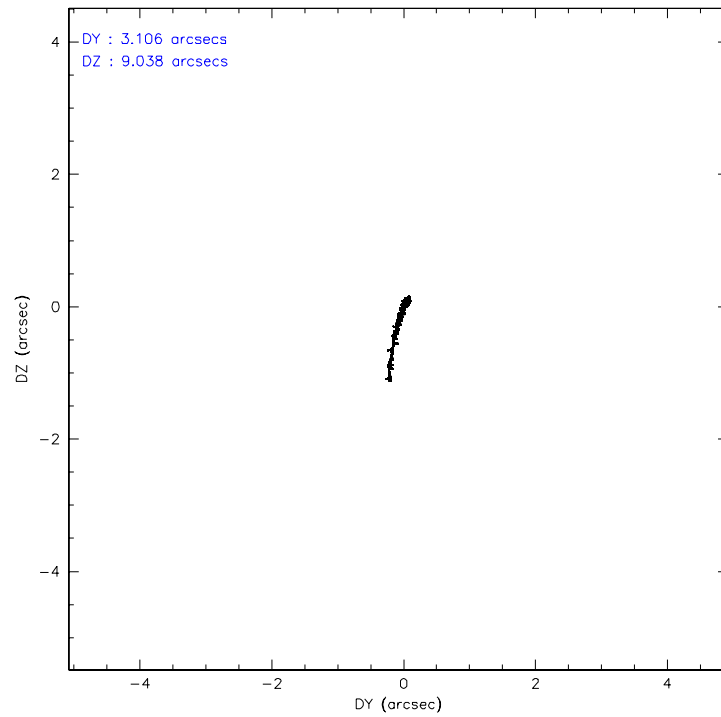
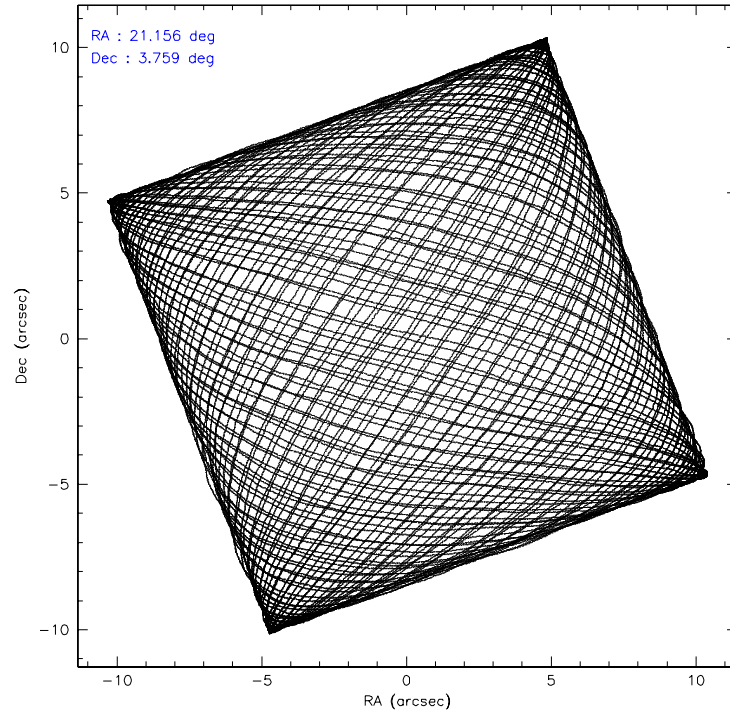
	ccd 2	ccd 3	ccd 5	ccd 6	ccd 7	ccd 8
grade 0 events	18171	17055	23654	17088	14013	27009
	5%	5%	4%	5%	3%	6%
grade 1 events	195	199	555	140	251	253
	0%	0%	0%	0%	0%	0%
grade 2 events	7313	6819	70941	7519	43756	17077
	2%	2%	14%	2%	10%	4%
grade 3 events	3518	3590	5988	3806	9659	8612
	1%	1%	1%	1%	2%	2%
grade 4 events	3463	3547	5278	3518	9880	7902
	1%	1%	1%	1%	2%	2%
grade 5 events	12037	13079	22631	13860	27717	17791
	3%	4%	4%	4%	6%	4%
grade 6 events	6034	6138	119959	7076	101677	20676
	1%	2%	24%	2%	23%	5%
grade 7 events	261473	247564	233463	255361	225035	287489
	83%	83%	48%	82%	52%	74%

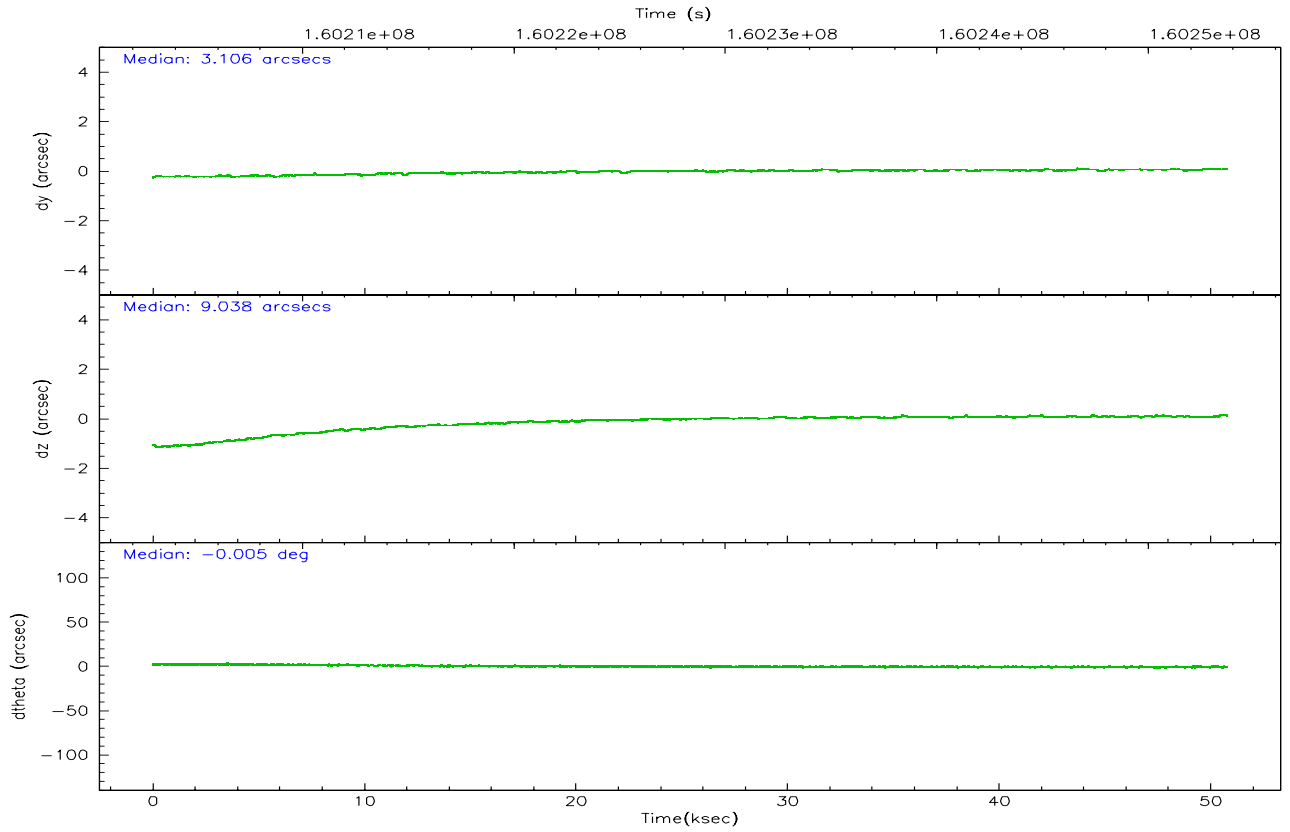
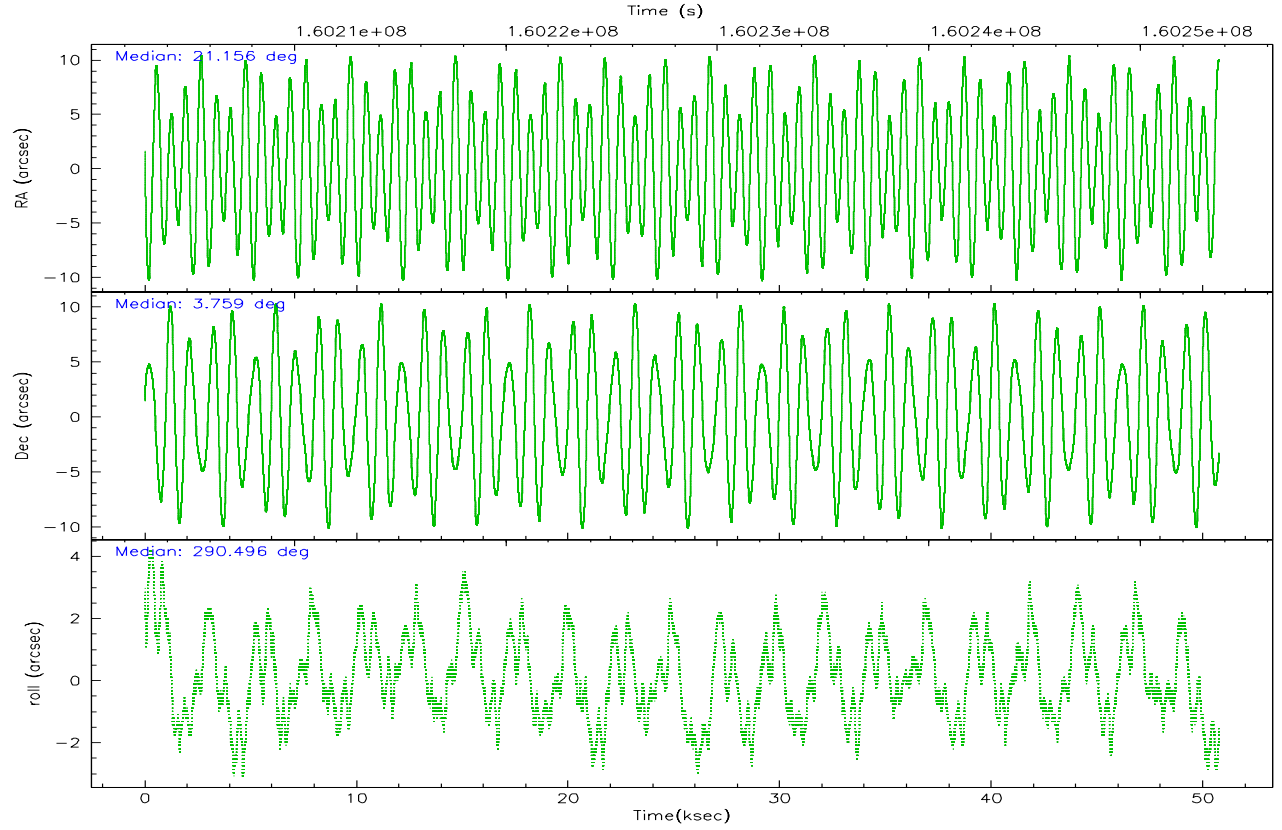


## 2.2 Compared Parameters

Parameter	Planned	Actual	Parameter	Planned	Actual
Instrument	ACIS	ACIS	Obspar format version number	6	6
Detector	ACIS-235678	ACIS-235678	Obspar file type	PREDICTED	ACTUAL
Grating	NONE	NONE	Obspar update status	NONE	UPDATED
Data mode	FAINT	FAINT	On-chip summing requested	N	N
Observation mode	POINTING	POINTING	Subarray requested	NONE	NONE
Pointing RA	21.135160	21.15643893909326	Alternating exposures requested	N	N
Pointing Dec	3.775789	3.75877065473148	Primary exposure time	0.000000	3.2
Pointing Roll	290.347231	290.5024609178423			
SIM focus pos (mm)	-0.684267	-0.6828225247311905			
SIM defocus (mm)	0	0.001444936568705701			
SIM translation stage pos (mm)	-190.132523	-190.1400660498719			
SIM translation stage offset (mm)	0	0.00754346686406393			
Observation start time	160203725.184000	160202467.51923			
Observation start date	2003-01-29T05:01:01	2003-01-29T04:41:07			
Observation end time	160253725.184000	160254632.84642			
Observation end date	2003-01-29T18:54:21	2003-01-29T19:10:32			
Read mode	TIMED	TIMED			

## 2.3 Aspect



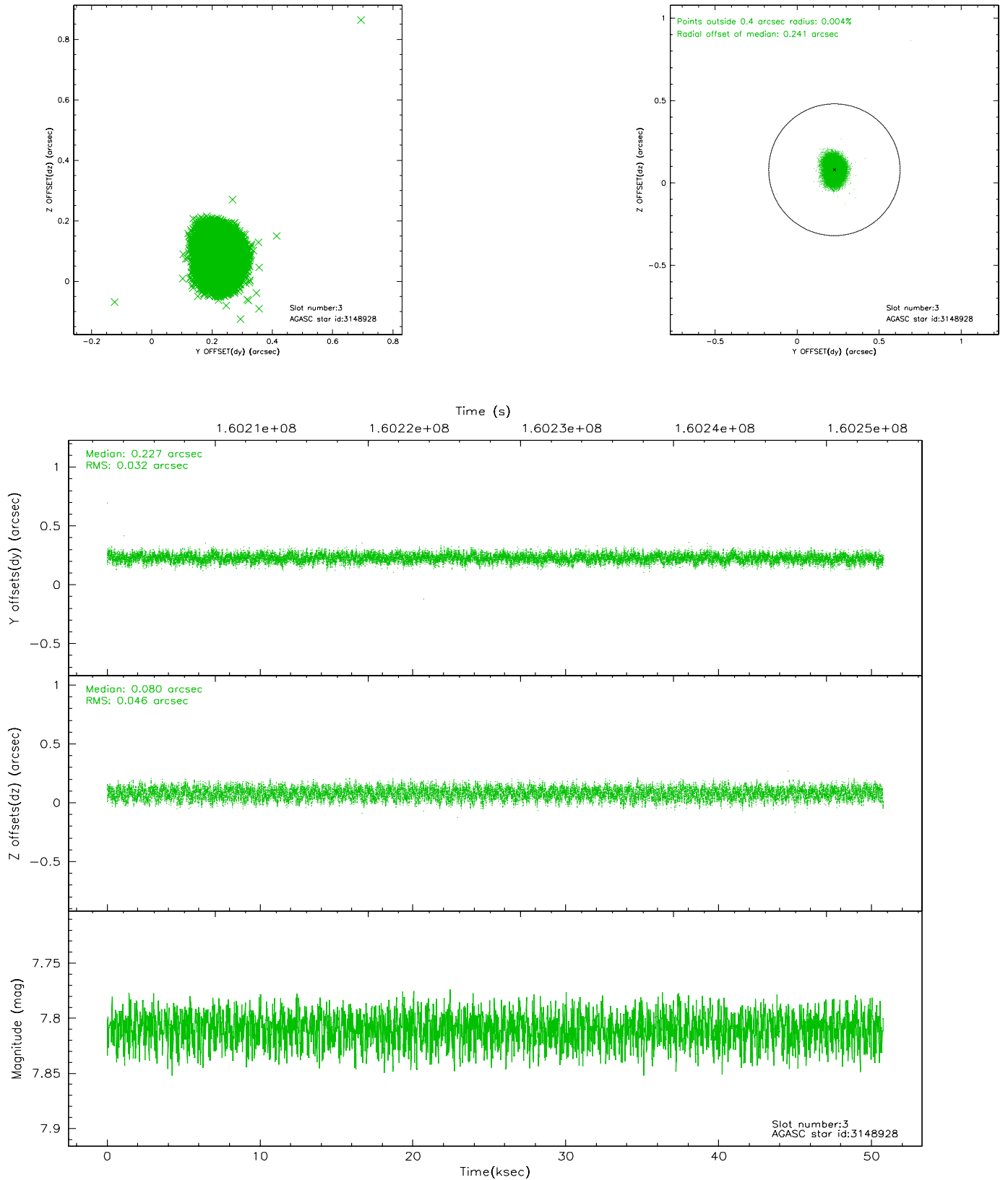


### Slot Statistics

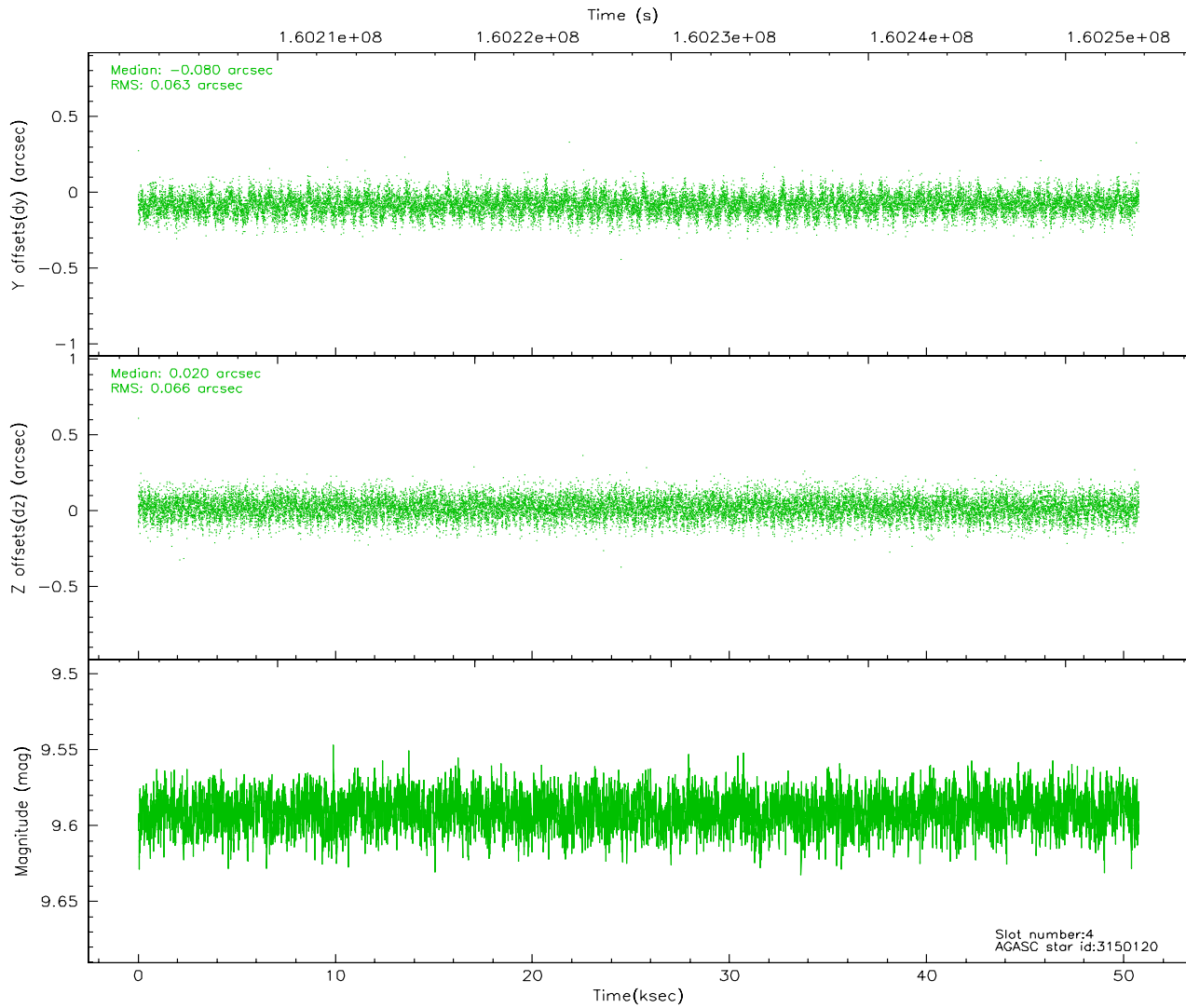
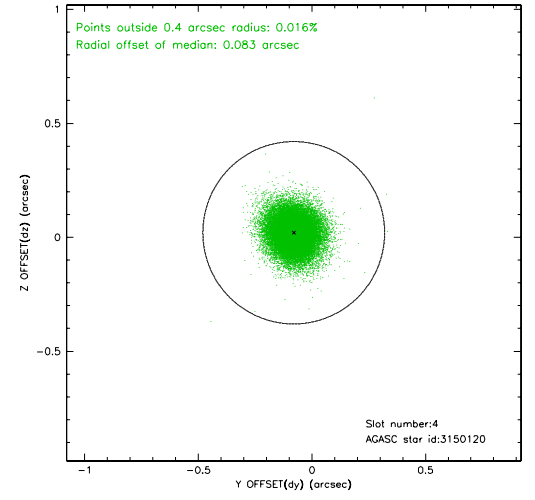
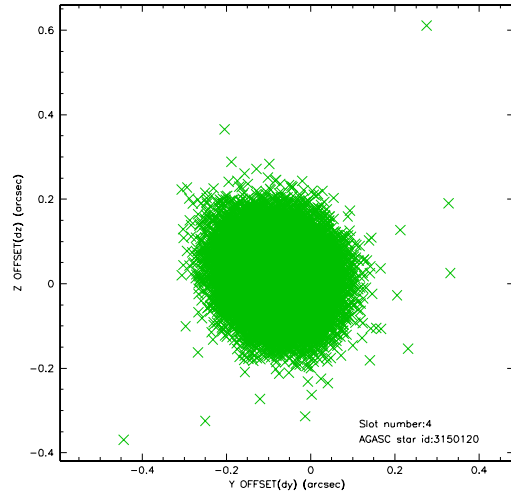
slot	status	id	mag	n_pts	med_dy	med_dz	dr1	dr2	ra	dec	mean_y	mean_z
0	FID	ACIS-S-2	7.11	12384	-0.019	0.007	0.010	0.022	0.000000	0.000000	-755.72	-1730.09
1	FID	ACIS-S-4	7.20	12385	-0.026	0.007	0.010	0.024	0.000000	0.000000	2157.54	178.43
2	FID	ACIS-S-5	7.24	12384	0.013	-0.005	0.007	0.011	0.000000	0.000000	-1808.57	172.04
3	GUIDE	3148928	7.81	24765	0.227	0.080	0.060	0.094	21.227392	3.349407	1554.85	-222.37
4	GUIDE	3150120	9.59	24760	-0.080	0.020	0.098	0.157	21.063302	4.434418	-2312.63	582.41
5	GUIDE	3150904	8.84	24762	-0.131	0.118	0.095	0.152	21.519227	4.440948	-1766.53	2125.54
6	GUIDE	3154272	8.67	24765	-0.051	-0.206	0.066	0.108	20.578009	3.513105	190.69	-2205.50
7	GUIDE	3154296	7.48	24768	0.027	-0.014	0.063	0.103	21.819290	3.805388	753.72	2341.69

## 2.4 Star Slots

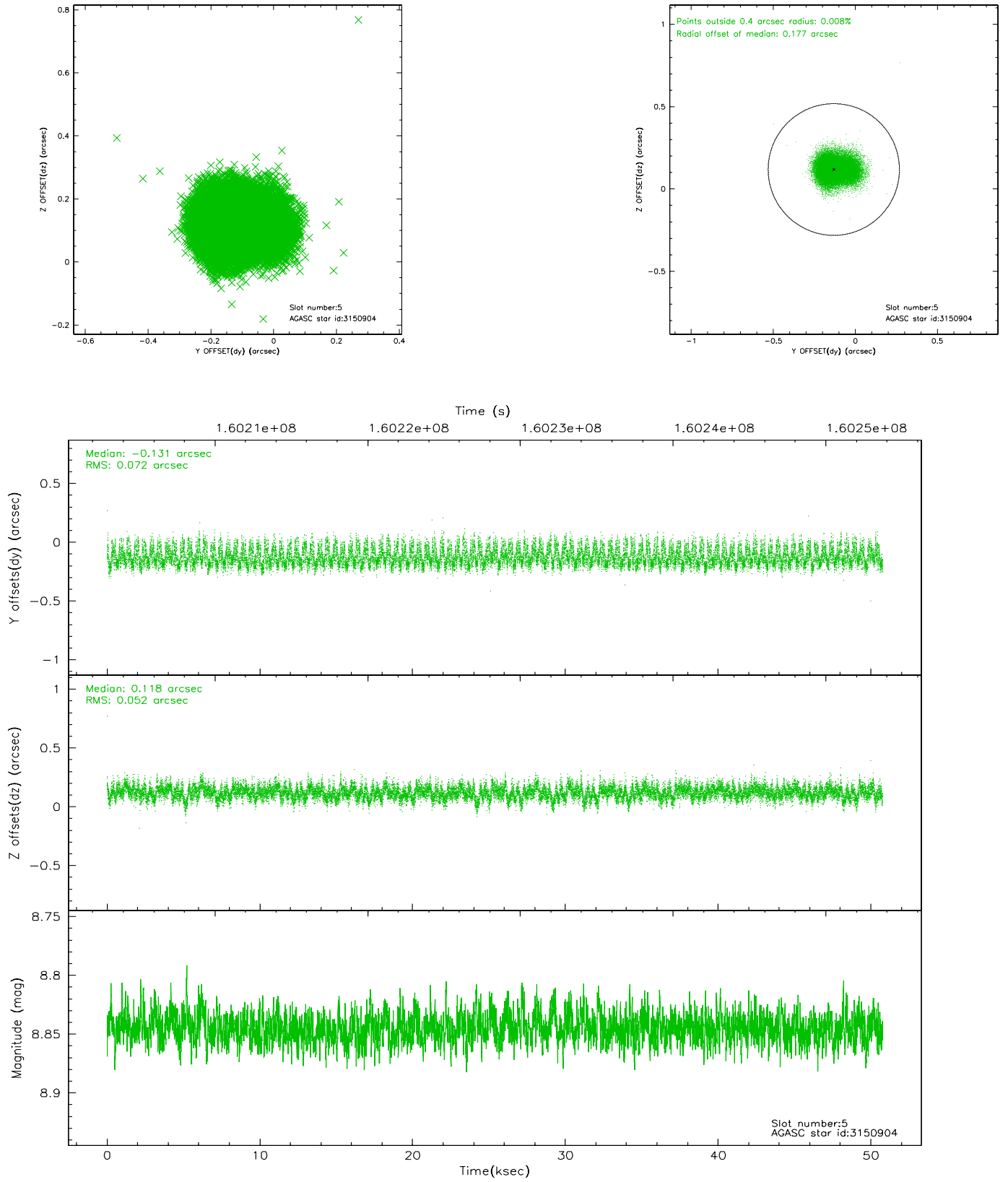
### 2.4.1 Slot 3



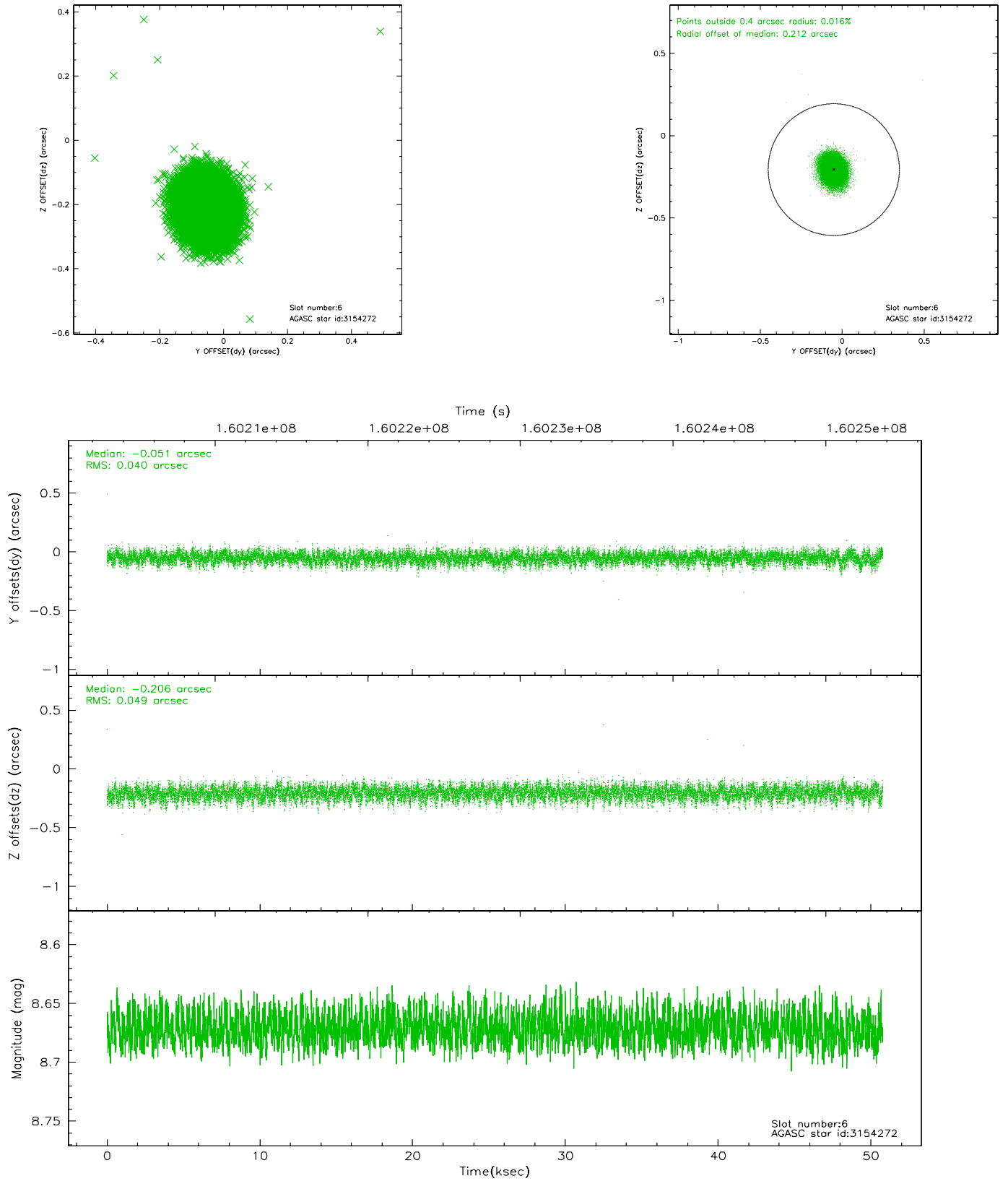
## 2.4.2 Slot 4



### 2.4.3 Slot 5

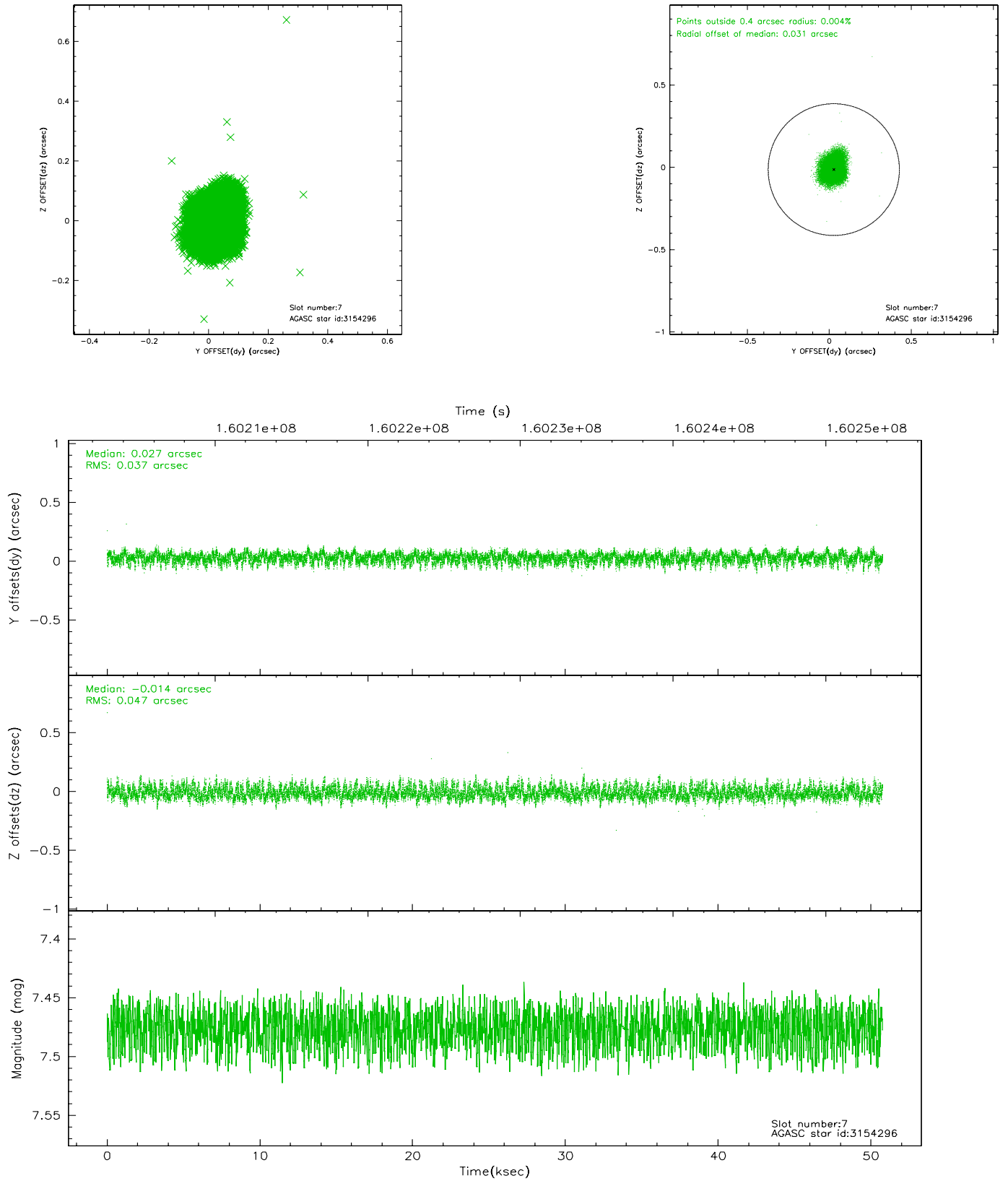


## 2.4.4 Slot 6



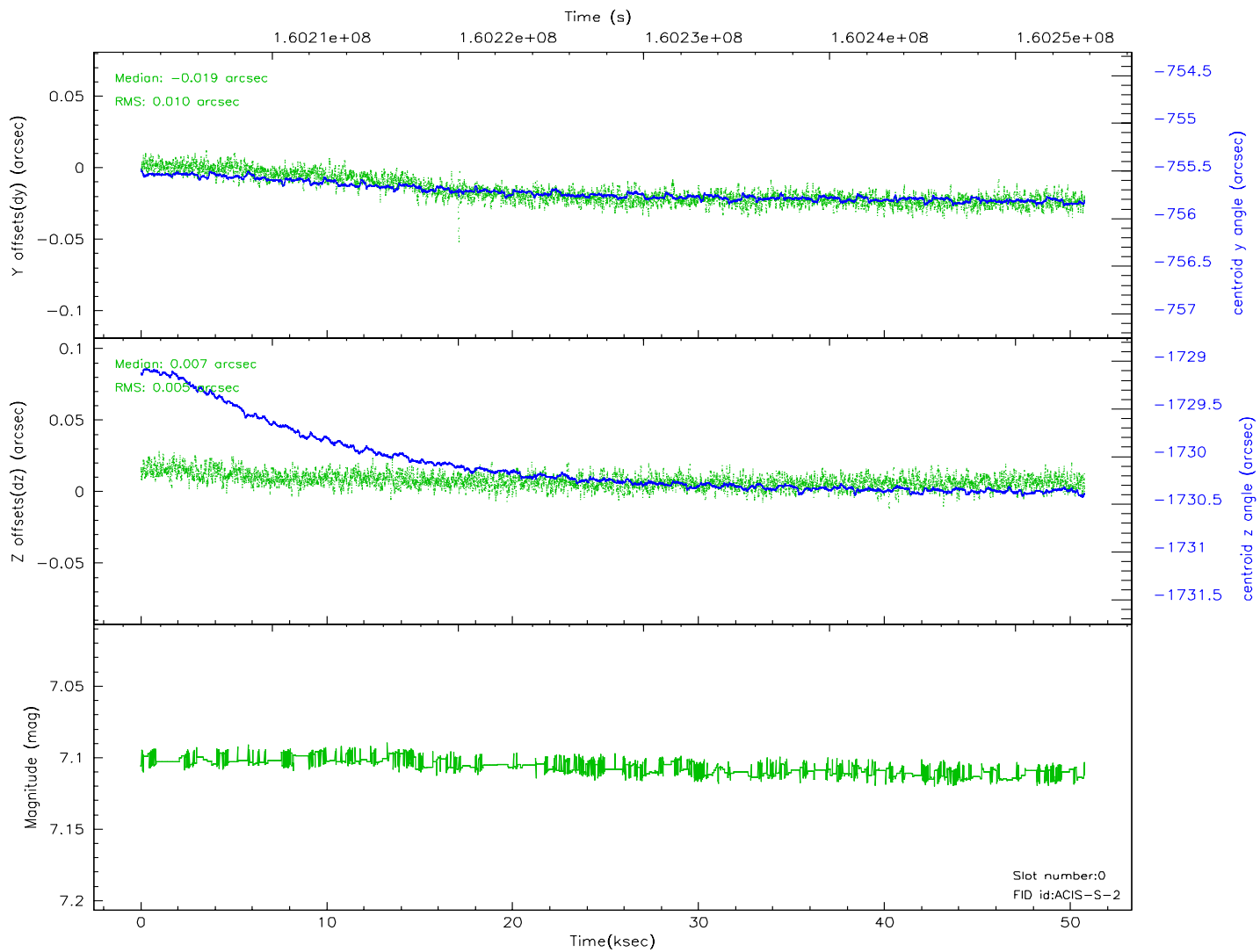
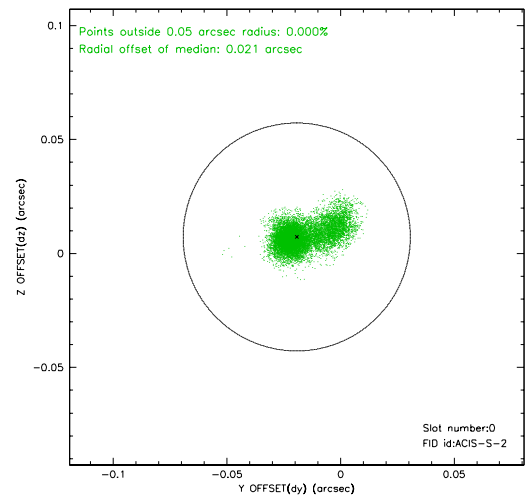
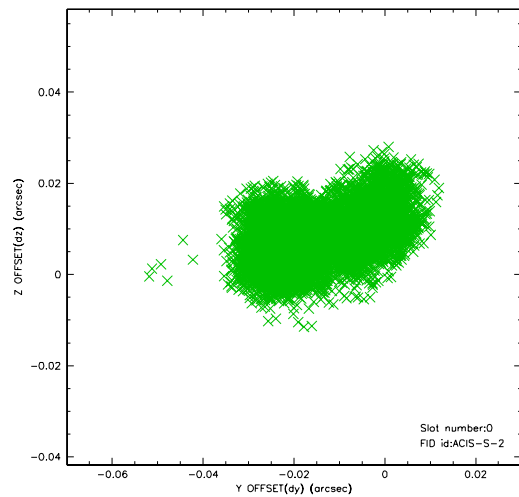


## 2.4.5 Slot 7

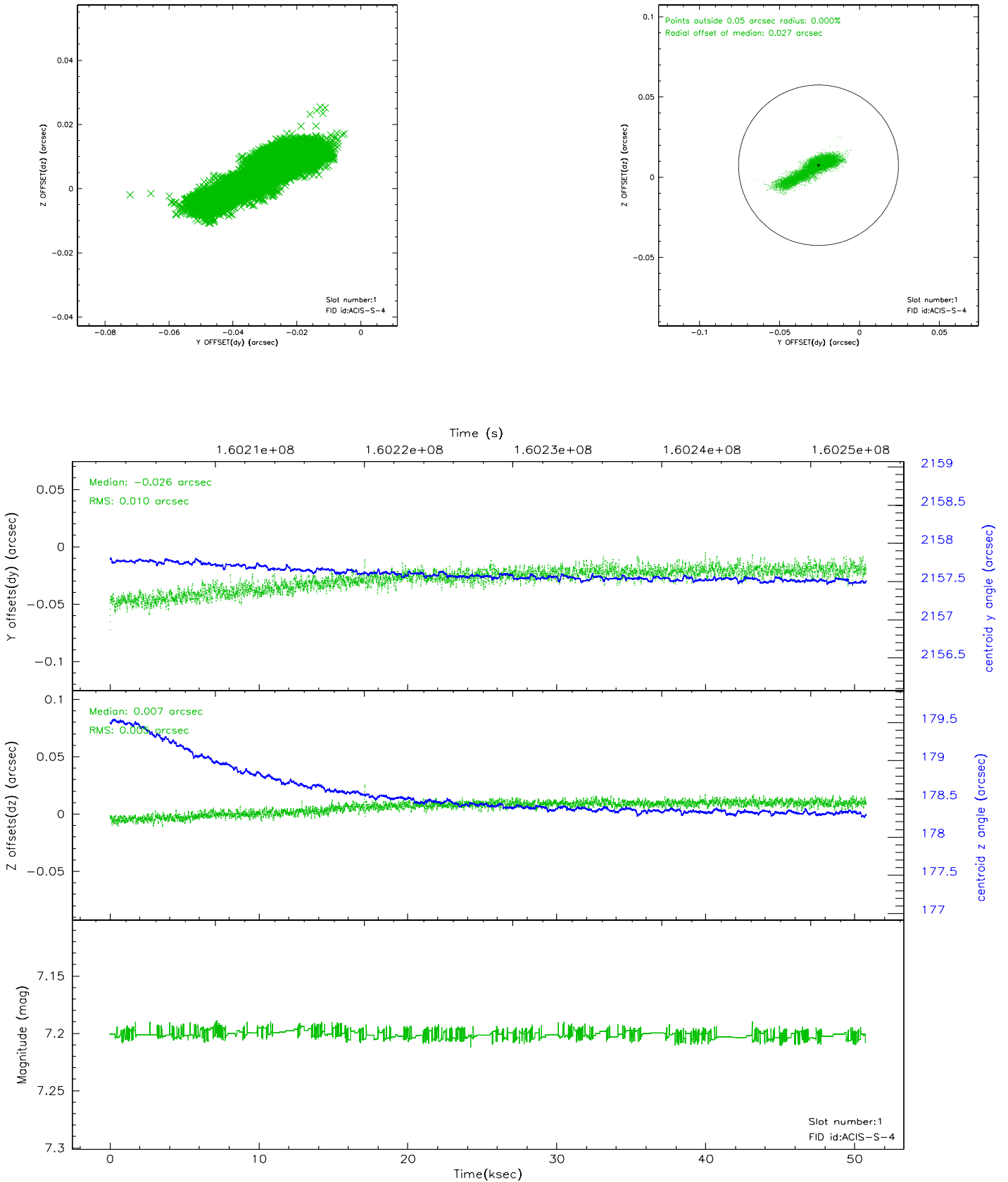


## 2.5 FID Slots

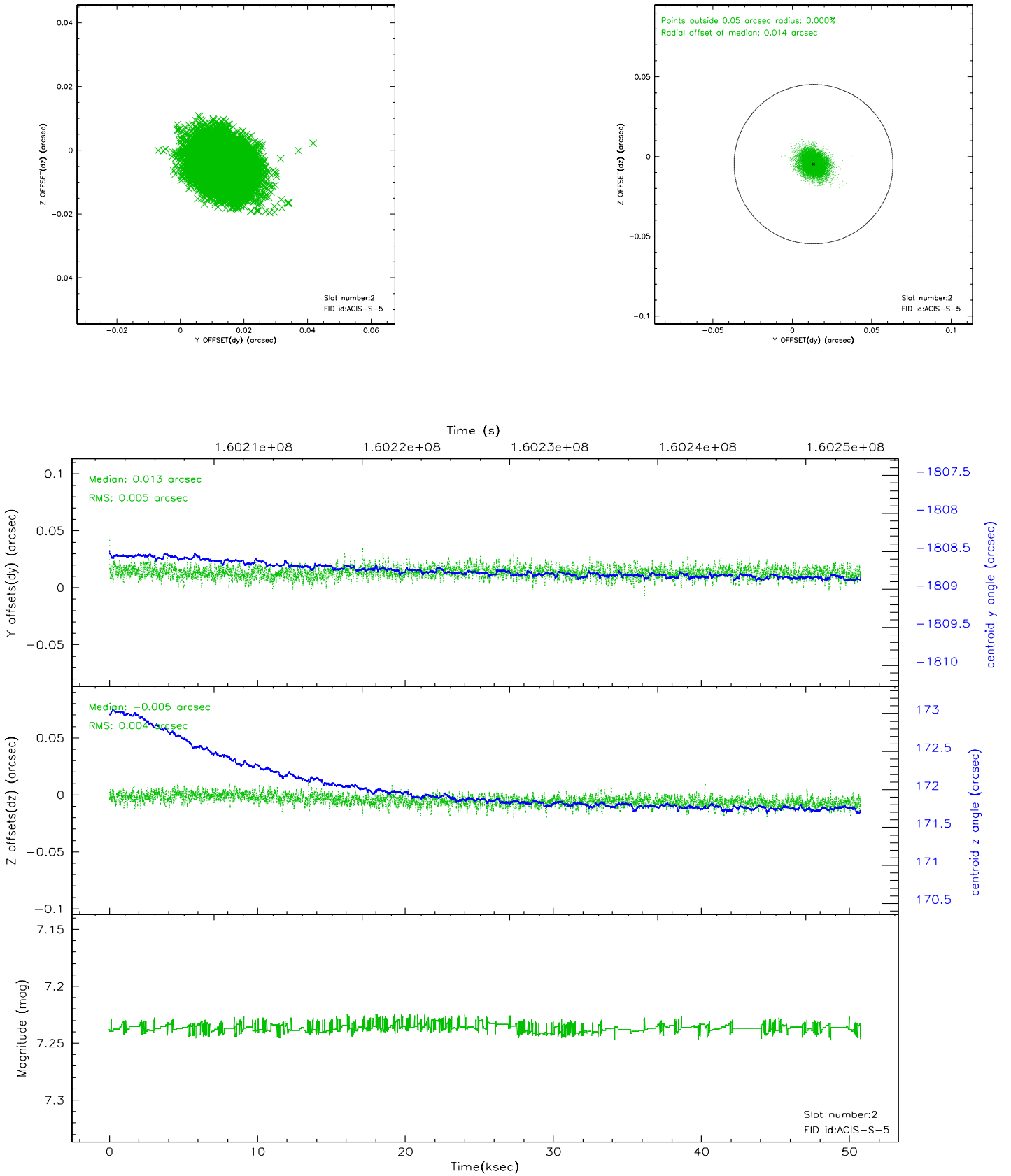
### 2.5.1 Slot 0



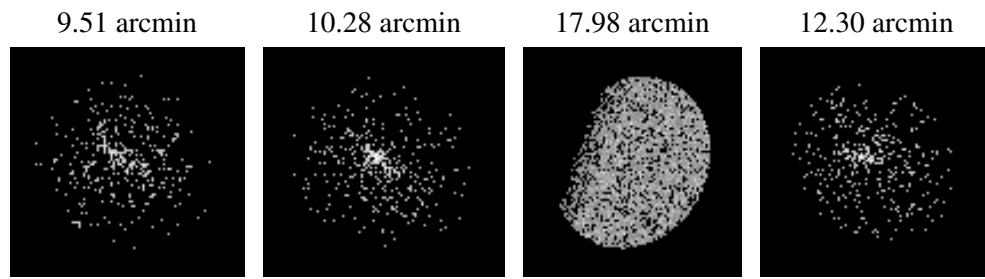
## 2.5.2 Slot 1



### 2.5.3 Slot 2



### 3 Point Sources



## A Summary

### A.1 Status

V&V Scientist	Jen Lauer
V&V Date (YYYY-MM-DD)	2006.07.20
V&V Edition	1
V&V Disposition and Status	OK
V&V Charge Time	49.964

### A.2 Comments