

V&V Reference Report

L2 ASCDS Version : 7.6.8.1

Observation 2694 - L2 Version 001
Chandra X-Ray Center

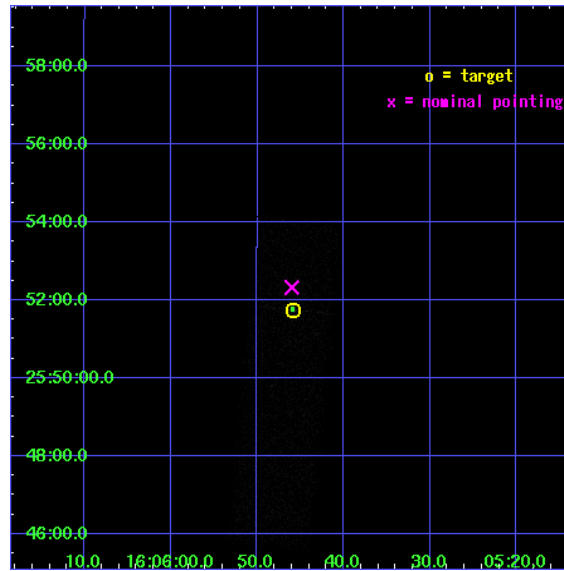
L2 Processing Date : Sep 6 2006

Contents

1	Front	2
2	OBI	3
2.1	OBI	3
2.1.1	Images	3
2.1.2	Bias	3
2.1.3	Parameters	4
2.1.4	Events	4
2.2	Compared Parameters	5
2.3	Aspect	6
2.4	Star Slots	9
2.4.1	Slot 3	9
2.4.2	Slot 4	10
2.4.3	Slot 5	11
2.4.4	Slot 6	12
2.4.5	Slot 7	13
2.5	FID Slots	14
2.5.1	Slot 0	14
2.5.2	Slot 1	15
2.5.3	Slot 2	16
3	Point Sources	17
A	Summary	18
A.1	Status	18
A.2	Comments	18

1 Front

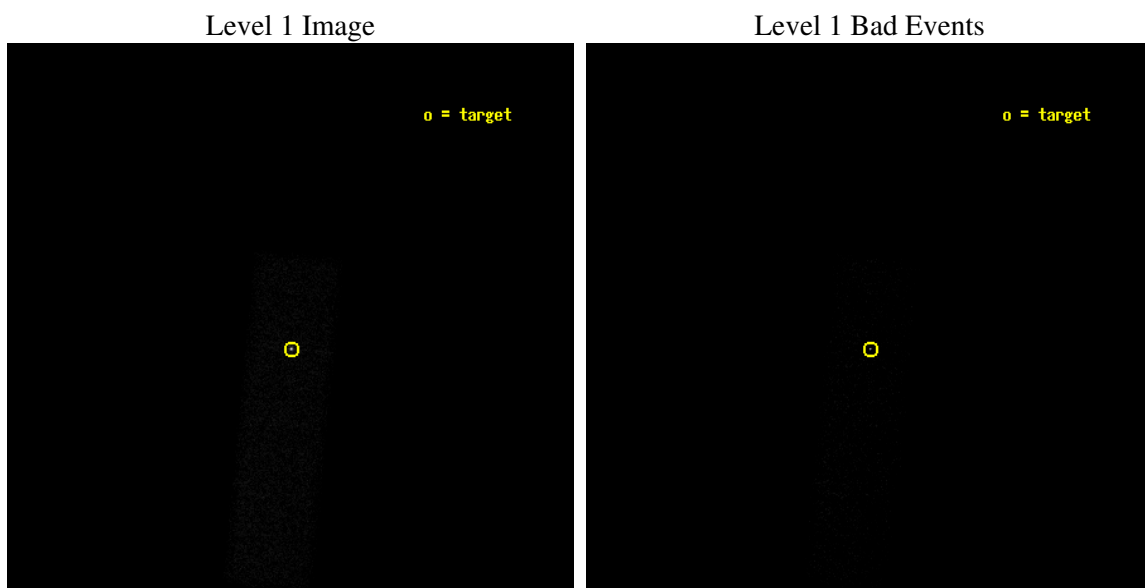
seq_num	400174
obs_id	2694
title	THE FAINTEST 'FIELD' LOW-MASS X-RAY BINARIES
observer	PROF MICHIEL VAN DER KLIS
object	1603.6+2600
dtcycle	0
cycle	P
ra_targ	241.440833
dec_targ	25.8625
ra_nom	241.44169274133
dec_nom	25.872120400465
roll_nom	95.581927148771
revision	3
ontime	7353.5999726057
livetime	6994.7683559457
ontime7	7353.5999726057
l2events	12589



2 OBI

2.1 OBI

2.1.1 Images



2.1.2 Bias

Chip 7



2.1.3 Parameters

obi_num	0
ascdsver	7.6.8.1
caldbver	3.2.3
date	2006-09-06T15:25:37
revision	3

sched_exp_time	7200.000000
ontime	8196.6843518168
ontime7	8196.6843518168
l1events	25760

2.1.4 Events

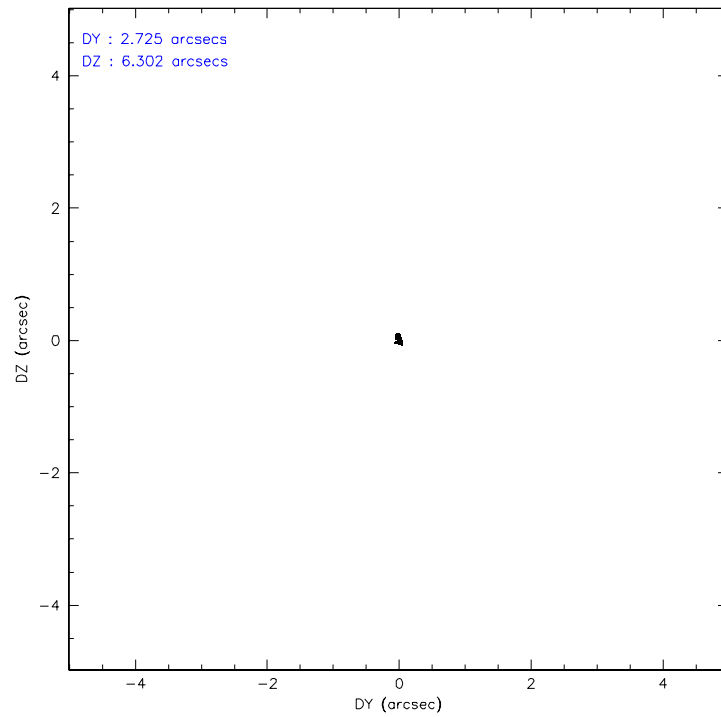
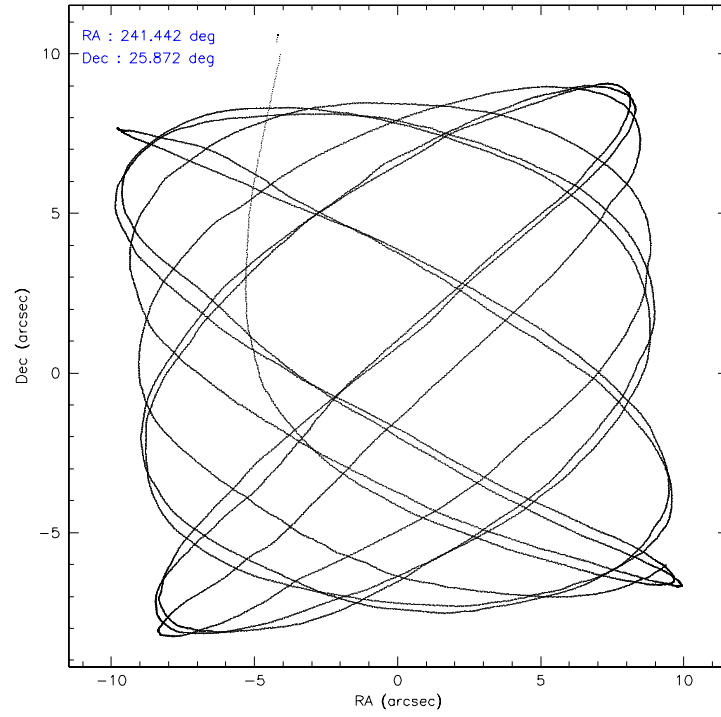
	ccd 7
level 1 events	25760
rejected events	12943
rejected %	50%

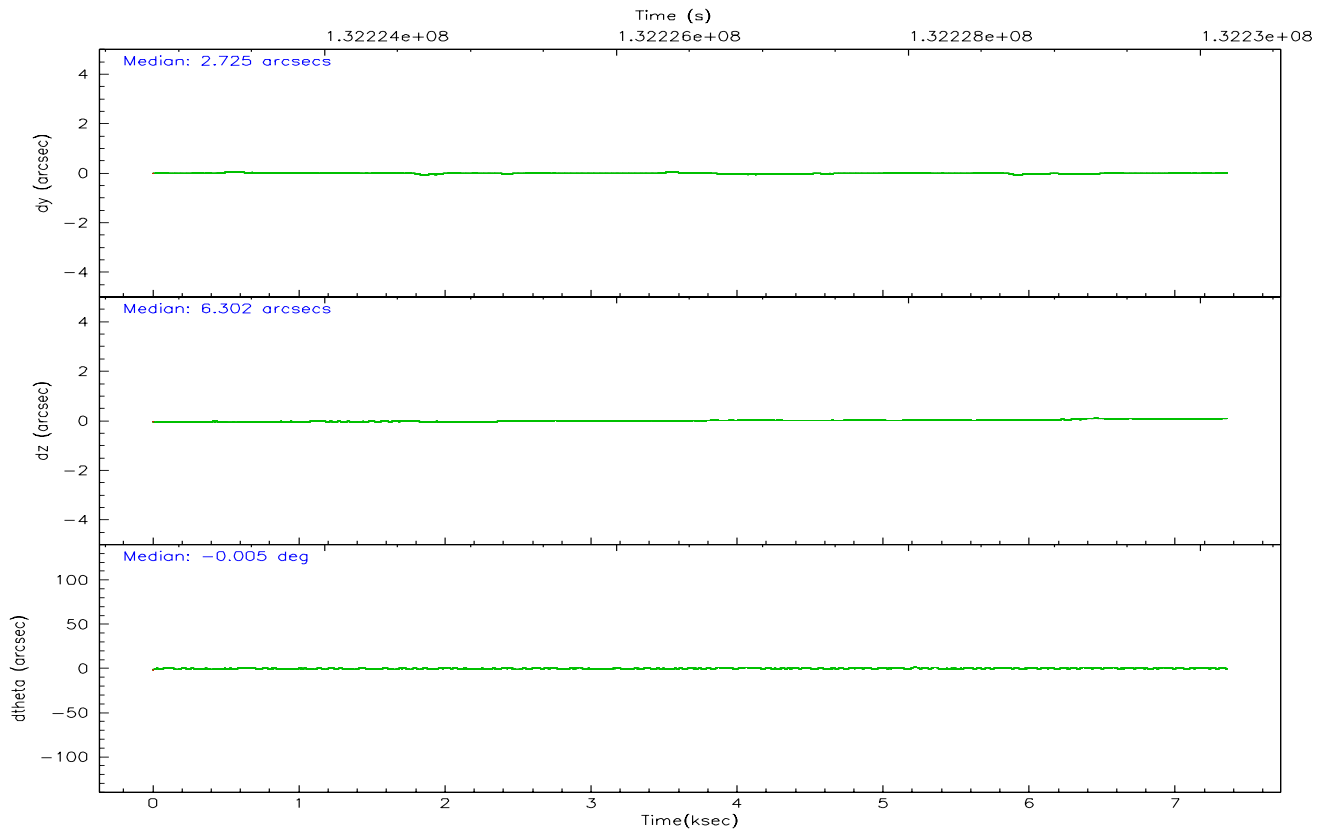
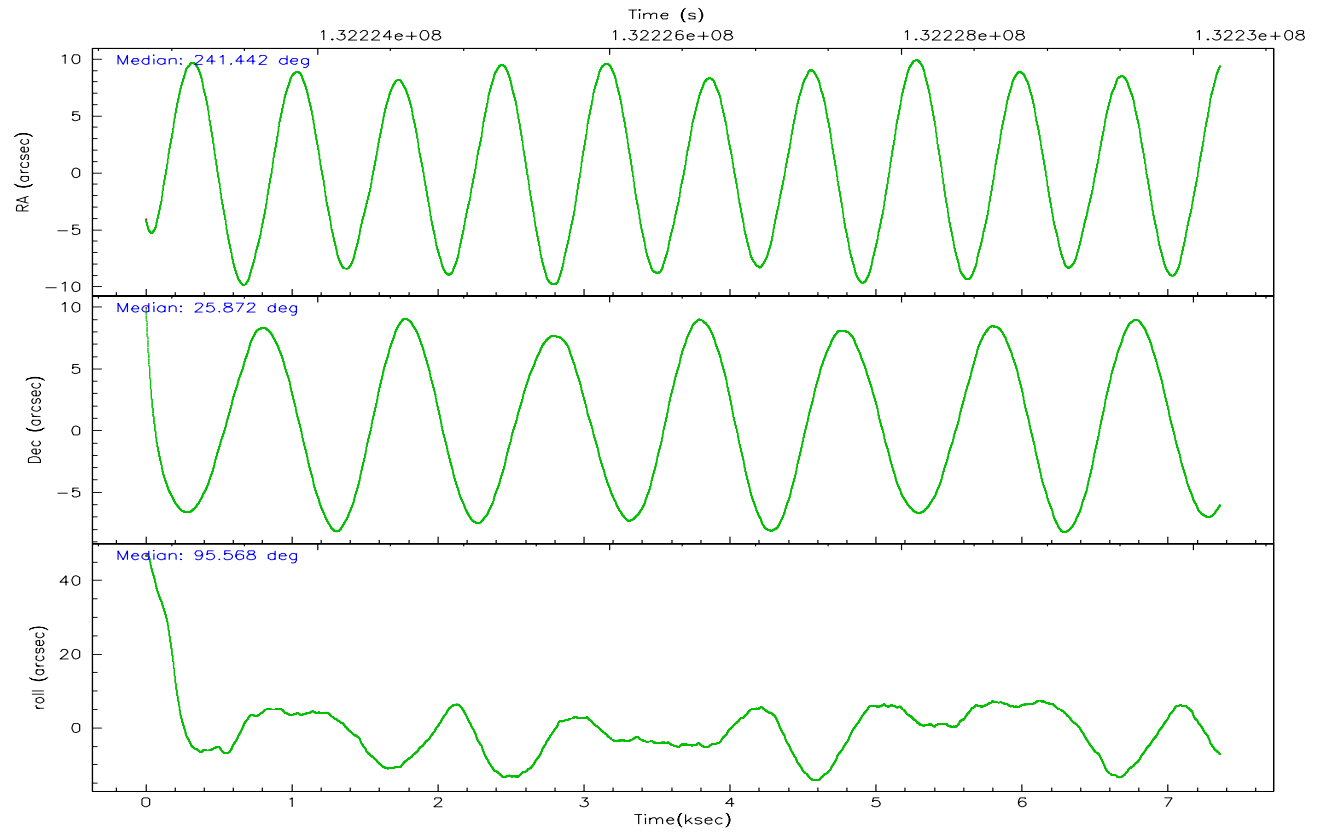
	ccd 7
grade 0 events	1959
	7%
grade 1 events	115
	0%
grade 2 events	3311
	12%
grade 3 events	1317
	5%
grade 4 events	1215
	4%
grade 5 events	1825
	7%
grade 6 events	5942
	23%
grade 7 events	10076
	39%

2.2 Compared Parameters

Parameter	Planned	Actual	Parameter	Planned	Actual
Instrument	ACIS	ACIS	Obspar format version number	6	6
Detector	ACIS-7	ACIS-7	Obspar file type	PREDICTED	ACTUAL
Grating	NONE	NONE	Obspar update status	NONE	UPDATED
Data mode	FAINT	FAINT	On-chip summing requested	N	N
Observation mode	POINTING	POINTING	Subarray requested	1/4	1/4
Pointing RA	241.459615	241.4416927413301	Subarray start row	0	385
Pointing Dec	25.850206	25.87212040046475	Subarray row count	1024	256
Pointing Roll	95.417449	95.58192714877129	Alternating exposures requested	N	N
SIM focus pos (mm)	-0.684267	-0.6828225247311905	Primary exposure time	0.000000	0.8
SIM defocus (mm)	0	0.001444936568705701			
SIM translation stage pos (mm)	-190.132523	-190.1425803651734			
SIM translation stage offset (mm)	0	0.01005778216563158			
Observation start time	132222980.184000	132221935.90344			
Observation start date	2002-03-11T08:35:16	2002-03-11T08:18:55			
Observation end time	132230180.184000	132230831.8788			
Observation end date	2002-03-11T10:35:16	2002-03-11T10:47:11			
Read mode	TIMED	TIMED			

2.3 Aspect



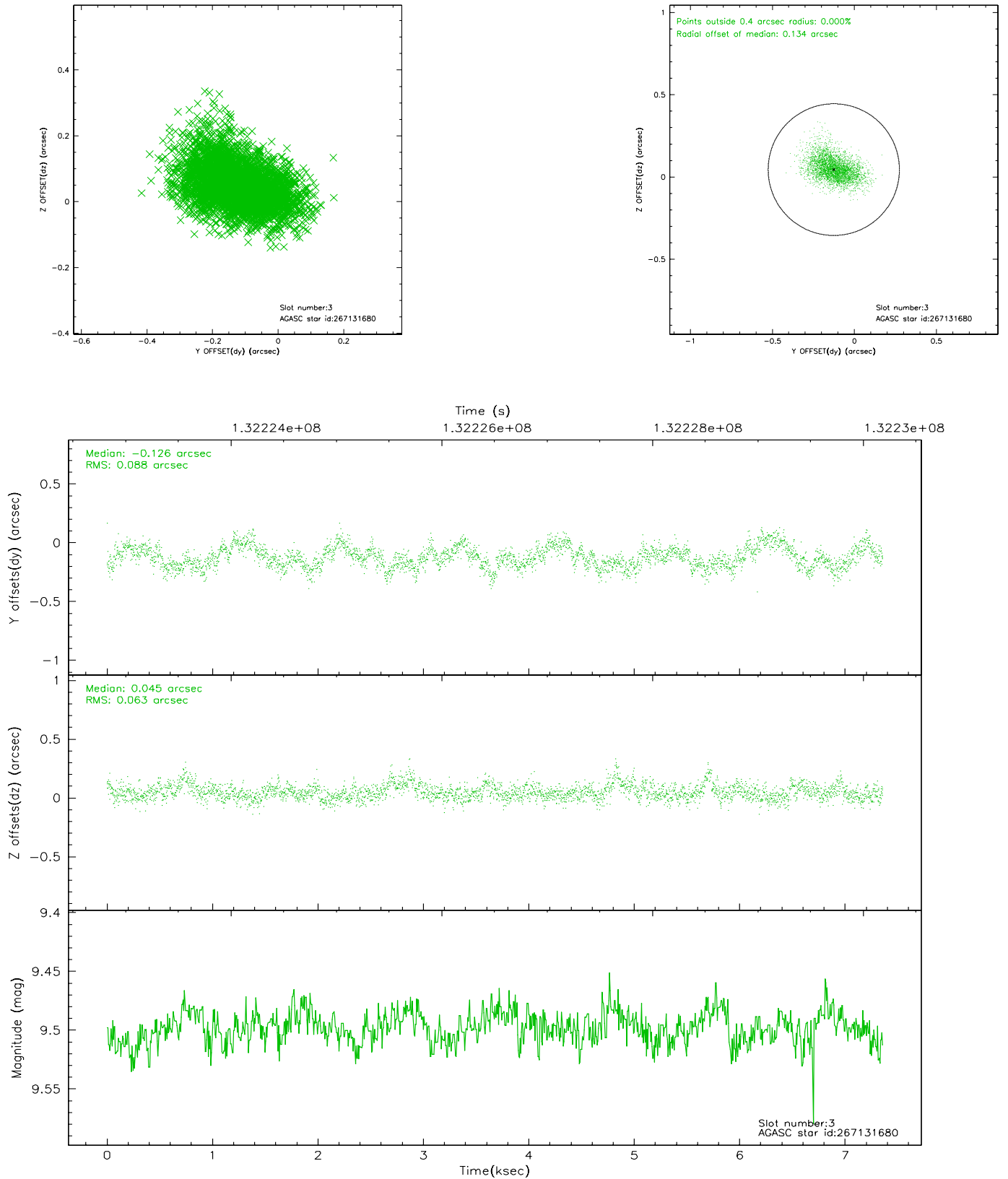


Slot Statistics

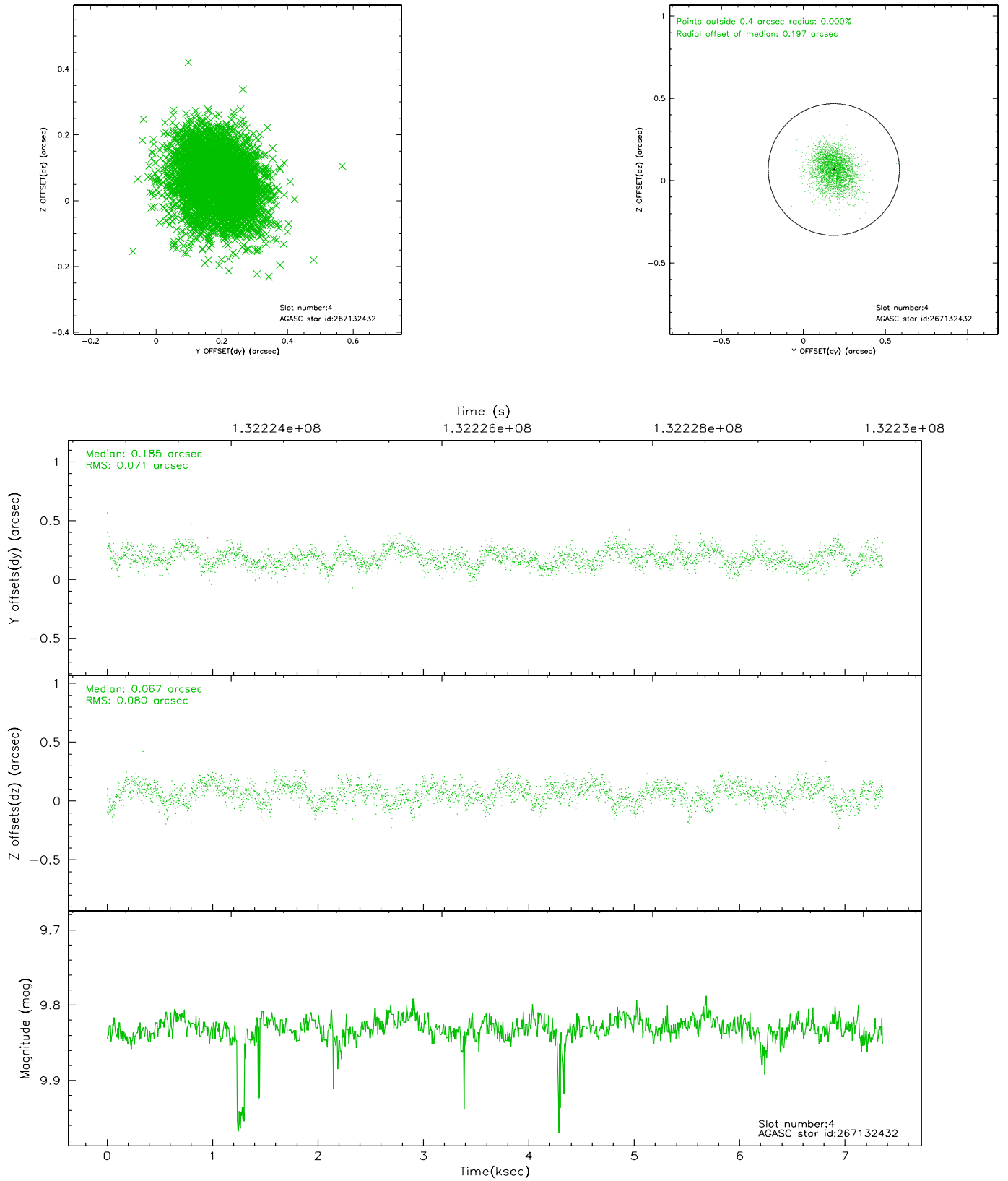
slot	status	id	mag	n_pts	med_dy	med_dz	dr1	dr2	ra	dec	mean_y	mean_z
0	FID	ACIS-S-2	7.12	1795	-0.022	0.032	0.006	0.011	0.000000	0.000000	-755.34	-1727.39
1	FID	ACIS-S-4	7.20	1795	-0.069	0.002	0.005	0.008	0.000000	0.000000	2157.50	180.32
2	FID	ACIS-S-5	7.24	1795	0.060	-0.025	0.006	0.010	0.000000	0.000000	-1807.14	174.77
3	GUIDE	267131680	9.50	3584	-0.126	0.045	0.114	0.194	241.730931	26.253055	1362.13	-1008.88
4	GUIDE	267132432	9.83	3582	0.185	0.067	0.114	0.185	241.946922	25.426777	-1663.27	-1434.53
5	GUIDE	267125408	9.76	3553	-0.086	0.059	0.103	0.176	241.735488	26.109472	845.74	-976.17
6	GUIDE	267126264	10.09	3586	-0.135	0.068	0.181	0.299	241.879465	26.278876	1411.06	-1495.17
7	GUIDE	267129952	10.03	3585	0.170	-0.249	0.133	0.220	240.908556	25.352869	-1609.33	1952.38

2.4 Star Slots

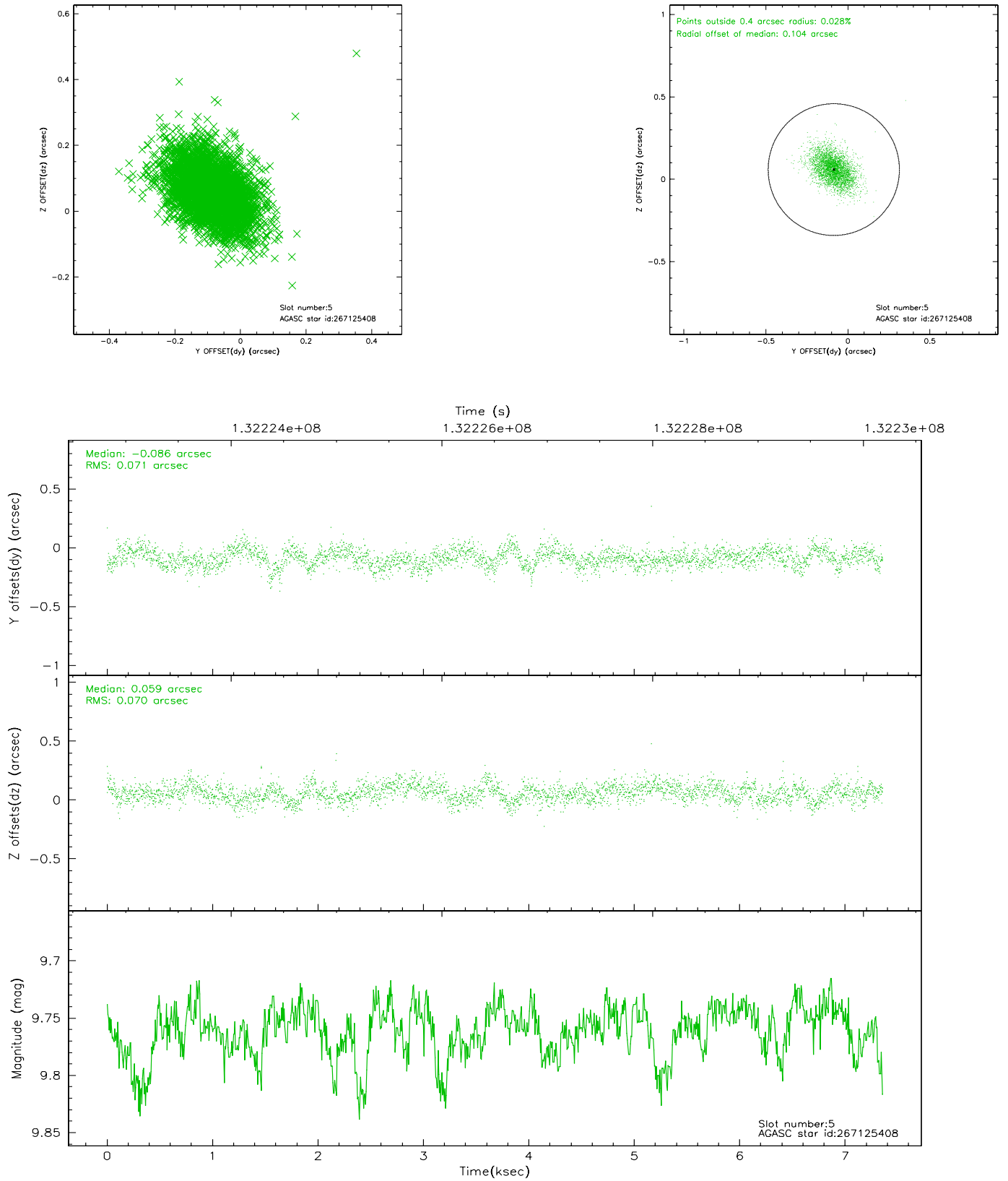
2.4.1 Slot 3



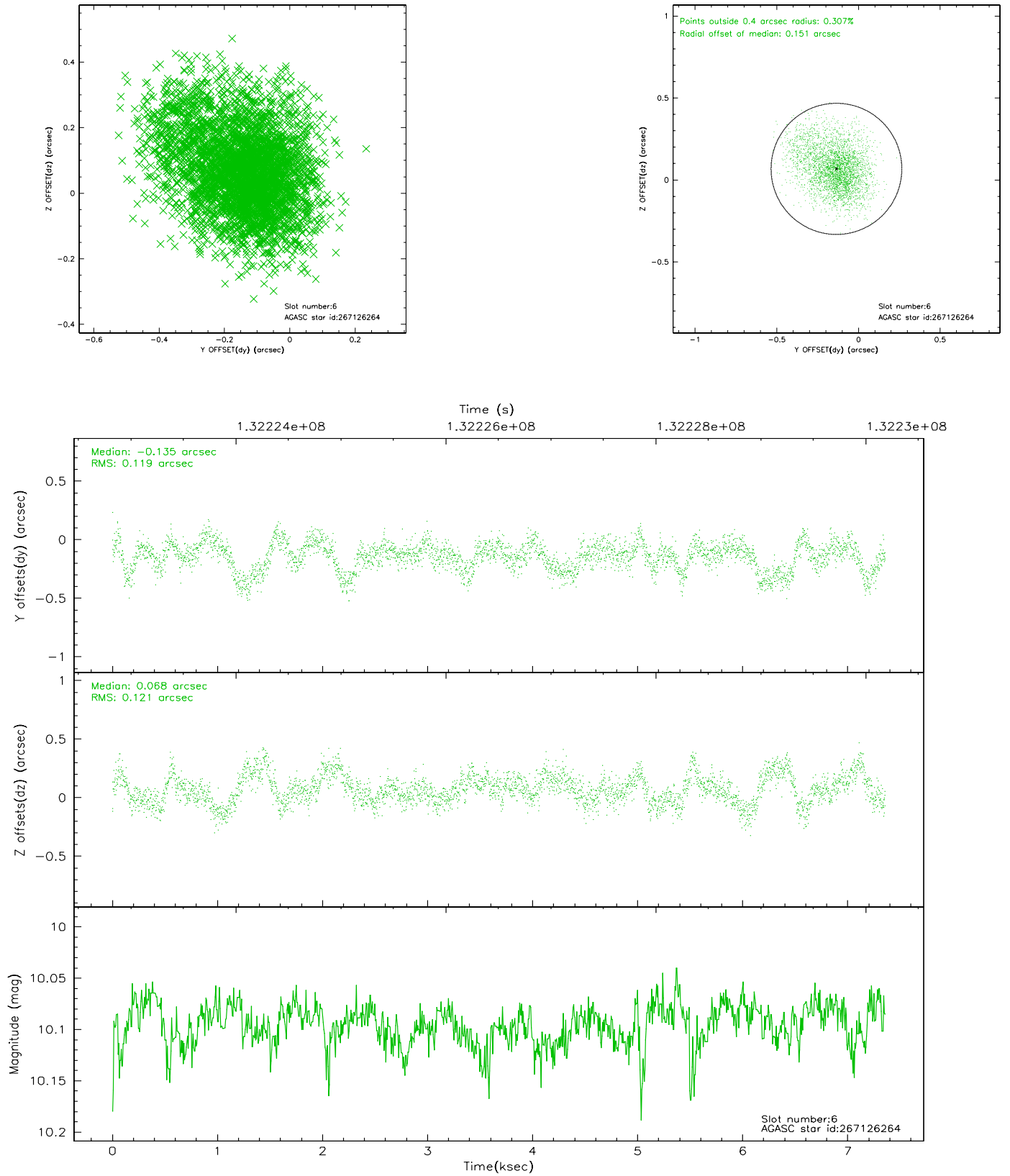
2.4.2 Slot 4



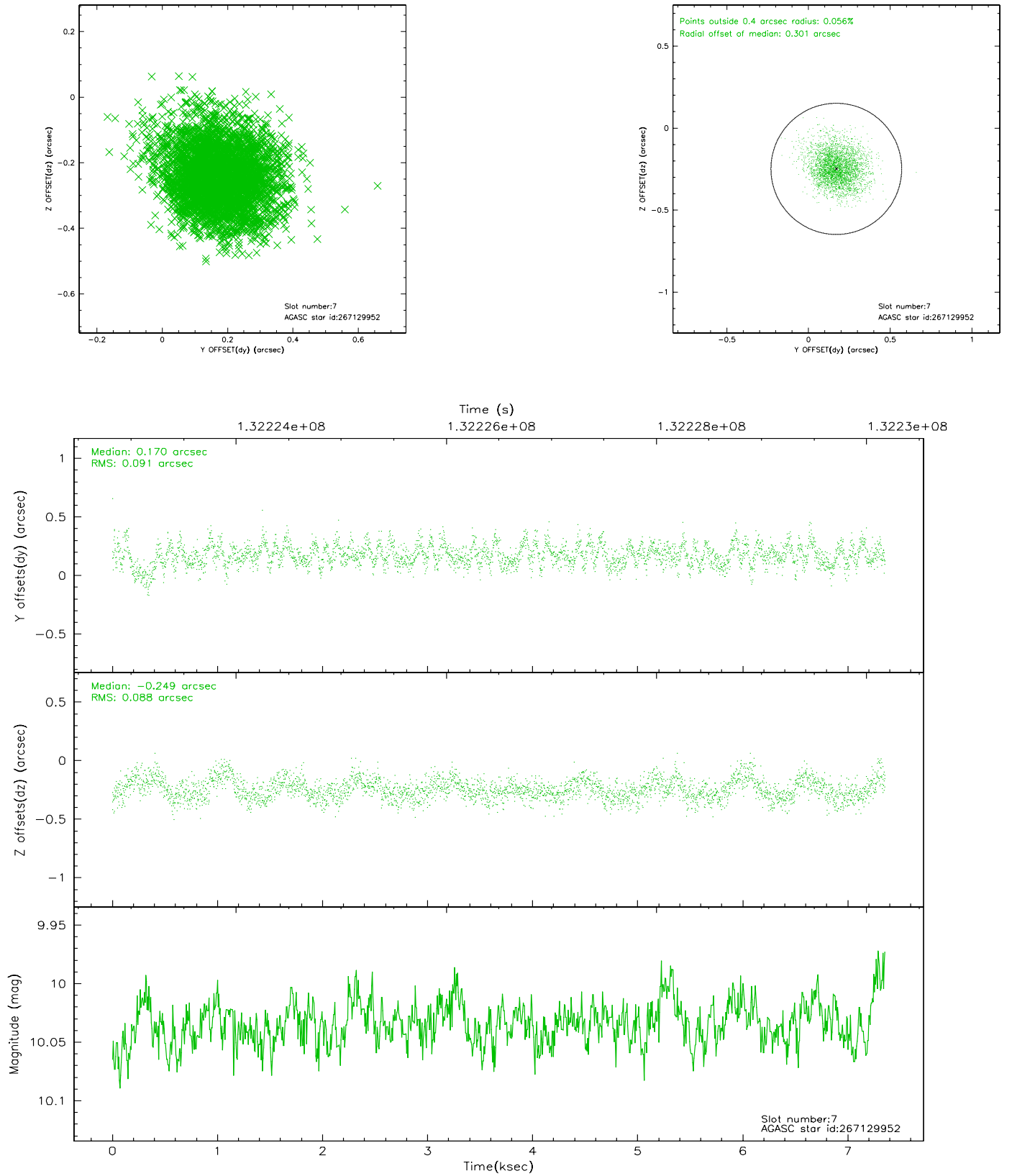
2.4.3 Slot 5



2.4.4 Slot 6

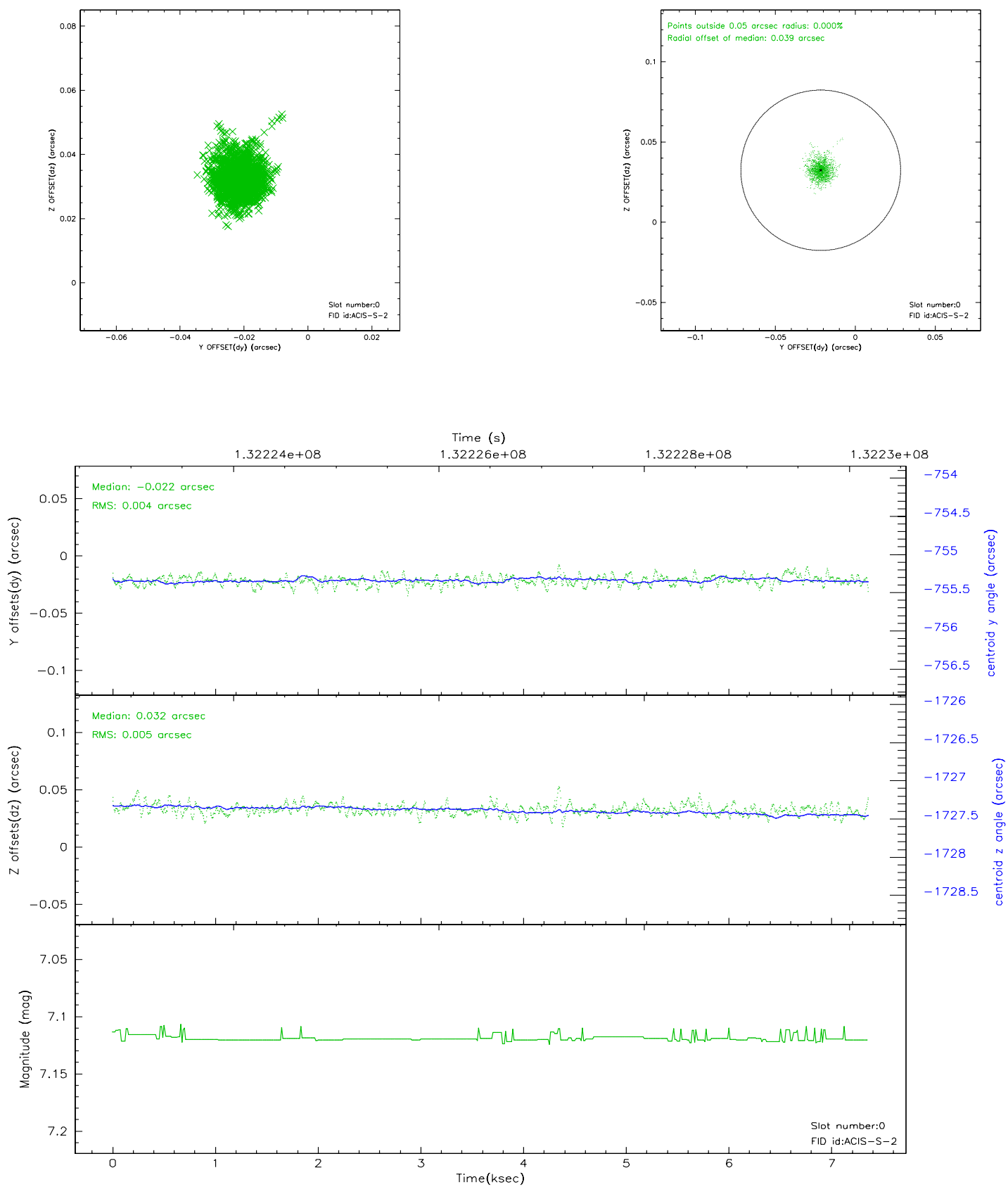


2.4.5 Slot 7

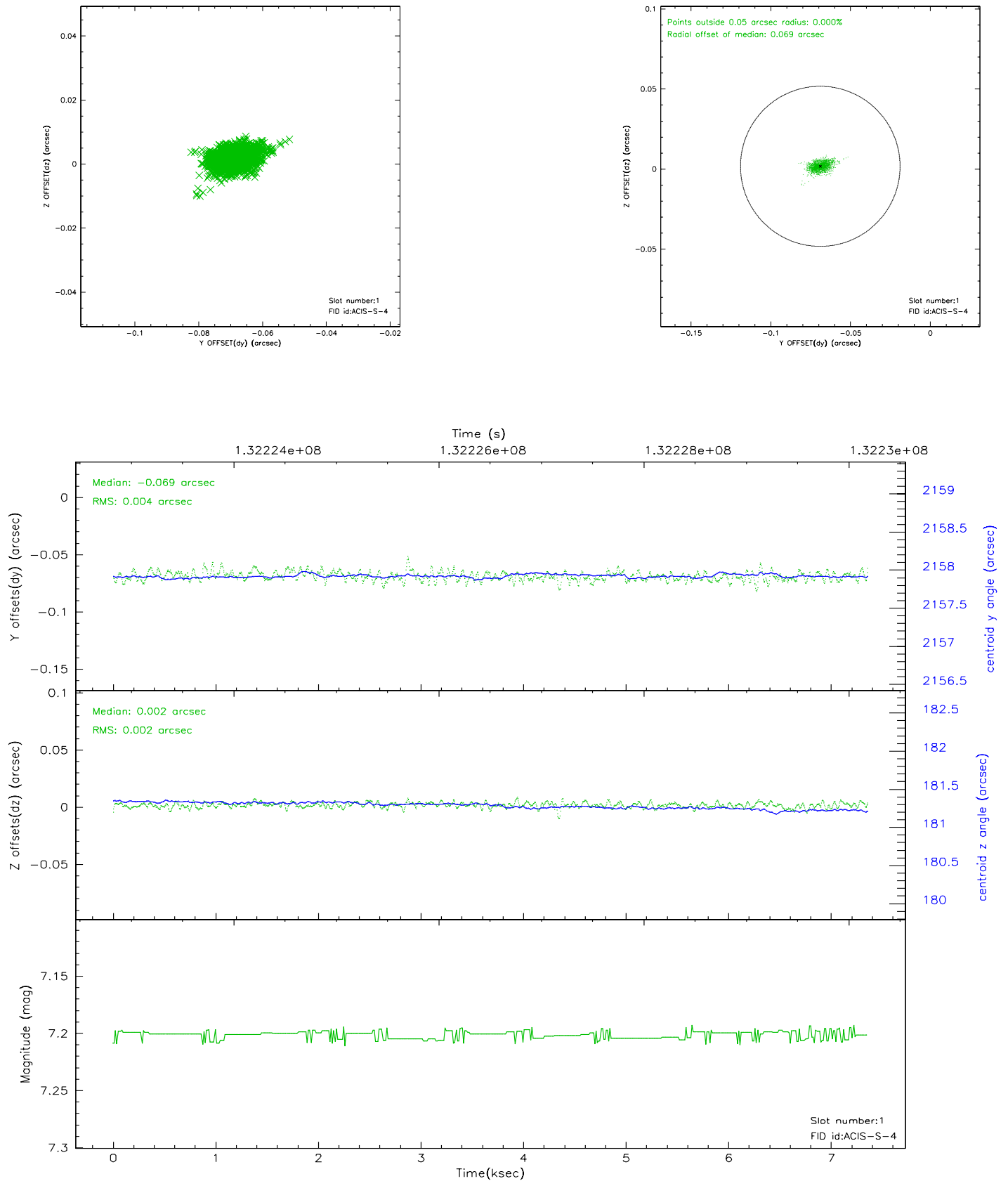


2.5 FID Slots

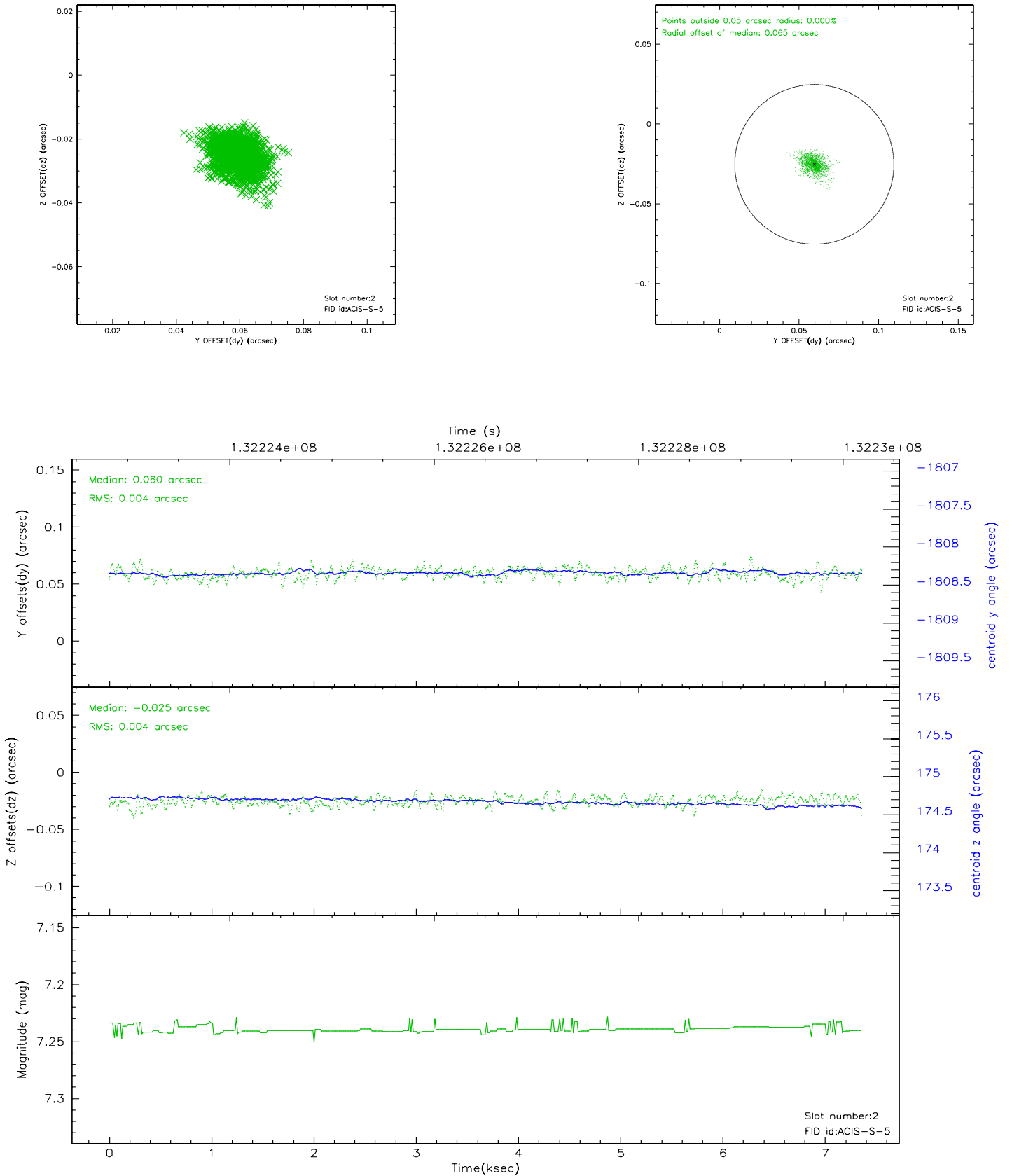
2.5.1 Slot 0



2.5.2 Slot 1



2.5.3 Slot 2



3 Point Sources

A Summary

A.1 Status

V&V Scientist	Jen Lauer
V&V Date (YYYY-MM-DD)	2006.09.06
V&V Edition	1
V&V Disposition and Status	OK
V&V Charge Time	7.353

A.2 Comments