

# V&V Reference Report

## L2 ASCDS Version : 7.6.9

Observation 2424 - L2 Version 001  
Chandra X-Ray Center

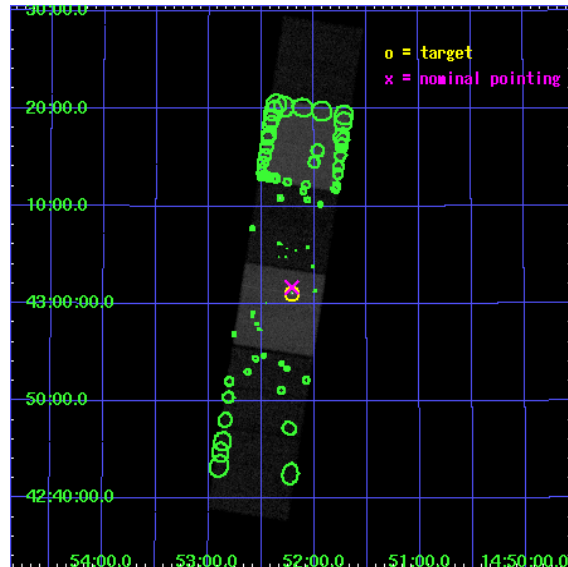
L2 Processing Date : Nov 8 2006

## Contents

<b>1</b>	<b>Front</b>	<b>2</b>
<b>2</b>	<b>OBI</b>	<b>3</b>
2.1	OBI . . . . .	3
2.1.1	Images . . . . .	3
2.1.2	Bias . . . . .	3
2.1.3	Parameters . . . . .	4
2.1.4	Events . . . . .	4
2.2	Compared Parameters . . . . .	5
2.3	Aspect . . . . .	6
2.4	Star Slots . . . . .	9
2.4.1	Slot 3 . . . . .	9
2.4.2	Slot 4 . . . . .	10
2.4.3	Slot 5 . . . . .	11
2.4.4	Slot 6 . . . . .	12
2.4.5	Slot 7 . . . . .	13
2.5	FID Slots . . . . .	14
2.5.1	Slot 0 . . . . .	14
2.5.2	Slot 1 . . . . .	15
2.5.3	Slot 2 . . . . .	16
<b>3</b>	<b>Point Sources</b>	<b>17</b>
<b>A</b>	<b>Summary</b>	<b>18</b>
A.1	Status . . . . .	18
A.2	Comments . . . . .	18

# 1 Front

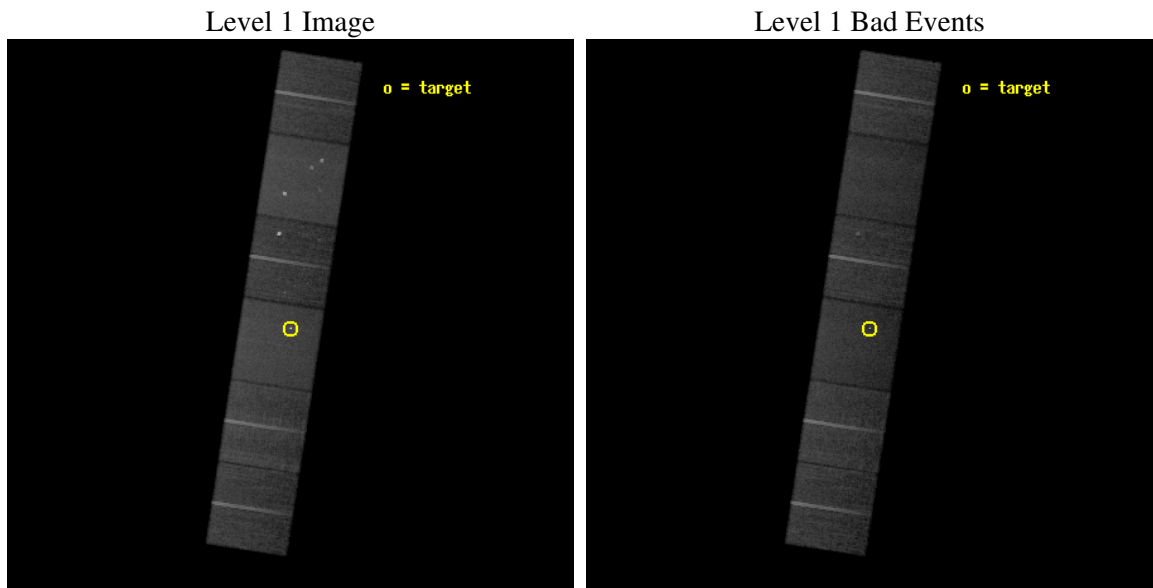
seq_num	500197
obs_id	2424
title	CHANDRA OBSERVATION OF THE X-RAY AFTERGLOW OF GRB010222, THE BRIGHTEST GRB OBSERVED BY BEPPOSAX
observer	Dr Luigi Piro
object	GRB010222
dtcycle	0
cycle	P
ra_targ	223.052292
dec_targ	43.018406
ra_nom	223.05264726566
dec_nom	43.028211604708
roll_nom	98.846982546049
revision	2
ontime	29920.000027865
livetime	29541.134971851
ontime4	29916.759037703
ontime5	29920.000027865
ontime6	29920.000027865
ontime7	29920.000027865
ontime8	29920.000027865
ontime9	29920.000027865
l2events	287322



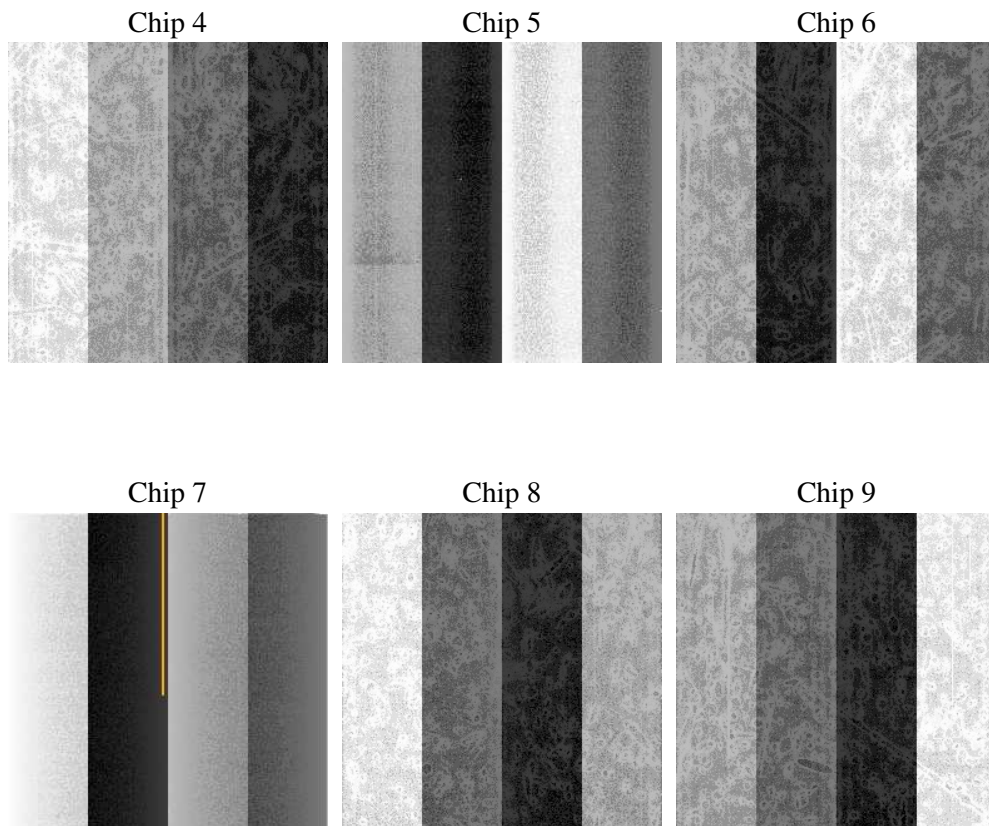
## 2 OBI

### 2.1 OBI

#### 2.1.1 Images



#### 2.1.2 Bias



### 2.1.3 Parameters

obi_num	0
ascdsver	7.6.9
caldsver	3.2.3
date	2006-11-08T22:15:06
revision	2

sched_exp_time	30000.000000
ontime	29924.141834602
ontime4	29920.90084444
ontime5	29924.141834602
ontime6	29924.141834602
ontime7	29924.141834602
ontime8	29924.141834602
ontime9	29924.141834602
l1events	1339914

### 2.1.4 Events

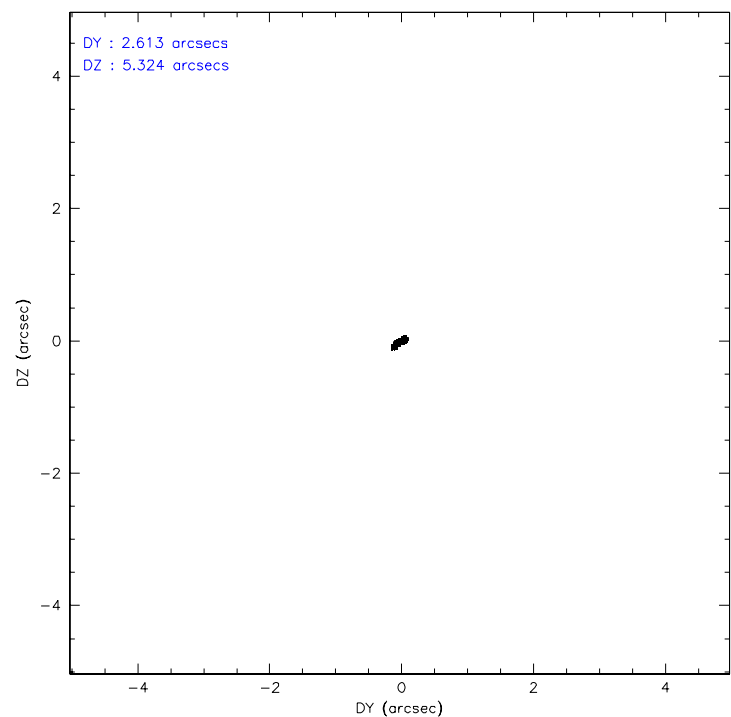
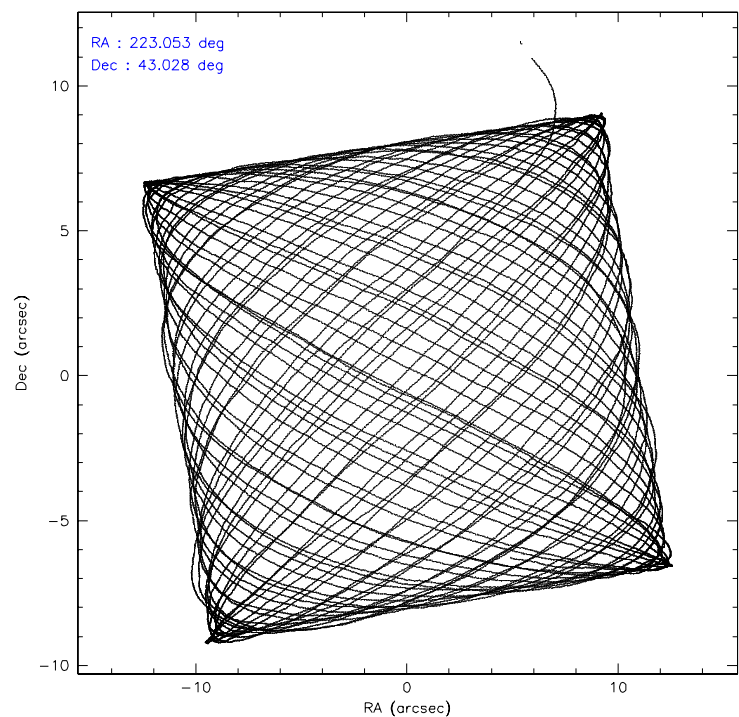
	ccd 4	ccd 5	ccd 6	ccd 7	ccd 8	ccd 9
level 1 events	205711	263605	197500	251747	233357	187994
rejected events	183625	146030	169026	152463	188534	166376
rejected %	89%	55%	85%	60%	80%	88%

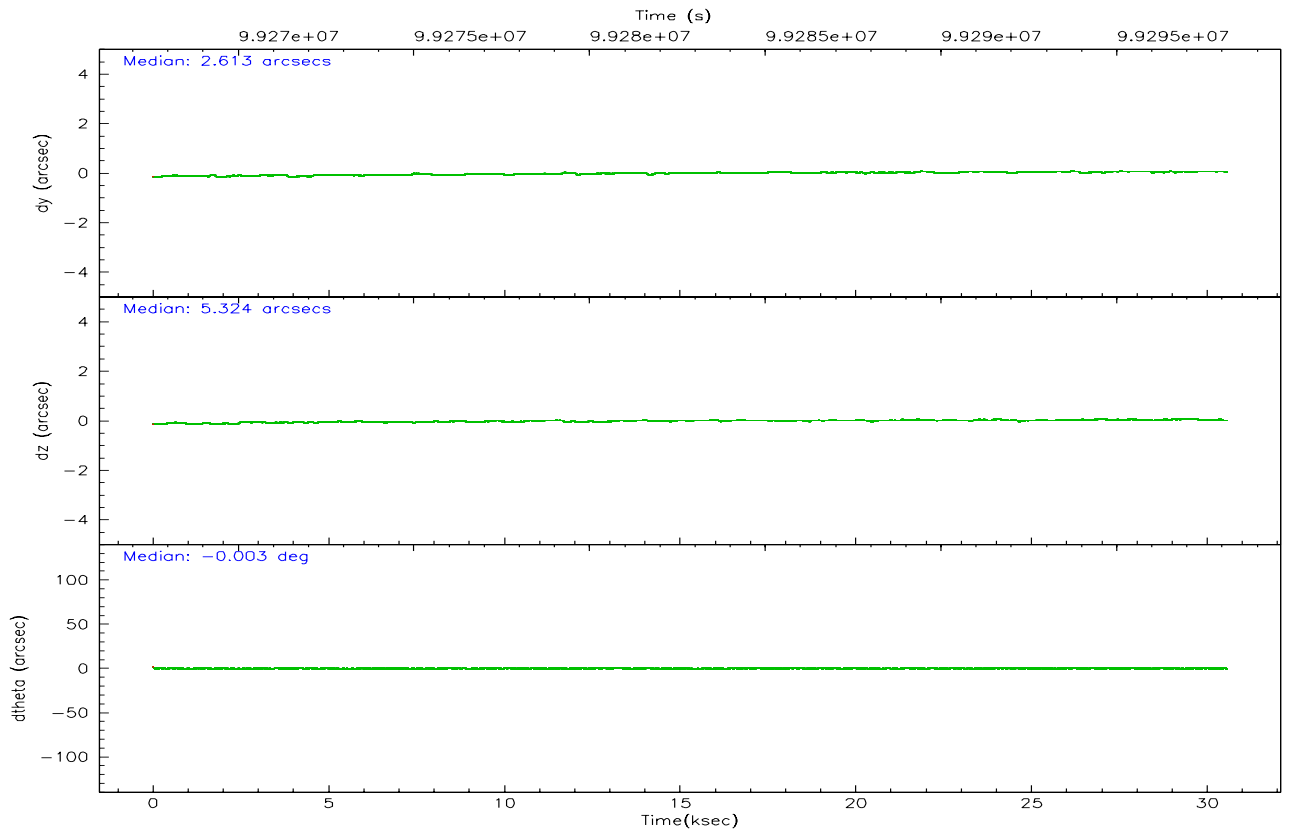
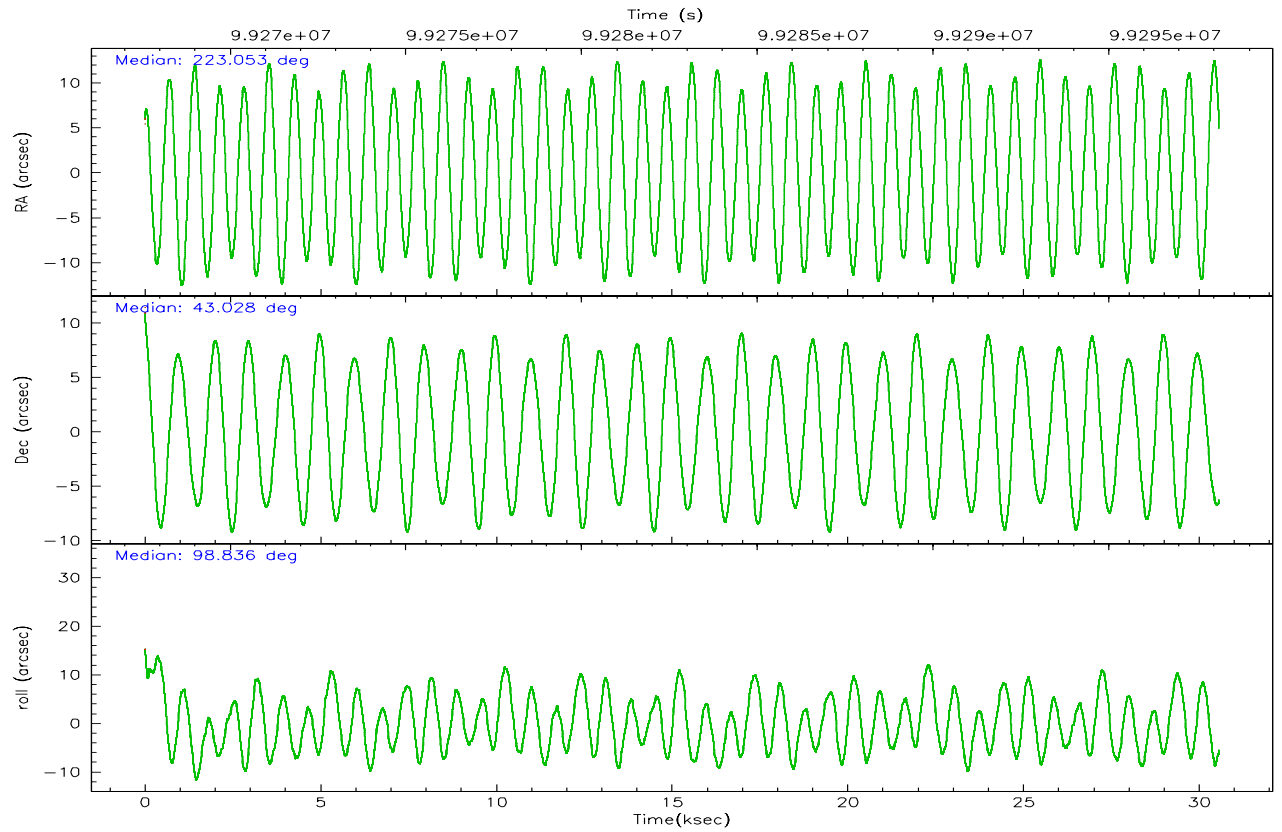
	ccd 4	ccd 5	ccd 6	ccd 7	ccd 8	ccd 9
grade 0 events	9084	12722	15353	7175	14155	8647
	4%	4%	7%	2%	6%	4%
grade 1 events	89	261	179	355	141	85
	0%	0%	0%	0%	0%	0%
grade 2 events	5200	34490	4487	23918	9574	4409
	2%	13%	2%	9%	4%	2%
grade 3 events	2066	2589	2203	5639	5007	2173
	1%	0%	1%	2%	2%	1%
grade 4 events	1969	2685	2137	5475	4464	2168
	0%	1%	1%	2%	1%	1%
grade 5 events	6623	12542	7904	17590	10040	8257
	3%	4%	4%	6%	4%	4%
grade 6 events	3771	65099	4297	57092	11643	4226
	1%	24%	2%	22%	4%	2%
grade 7 events	176909	133217	160940	134503	178333	158029
	85%	50%	81%	53%	76%	84%

## 2.2 Compared Parameters

Parameter	Planned	Actual	Parameter	Planned	Actual
Instrument	ACIS	ACIS	Obspar format version number	6	6
Detector	ACIS-456789	ACIS-456789	Obspar file type	PREDICTED	ACTUAL
Grating	NONE	NONE	Obspar update status	NONE	UPDATED
Data mode	FAINT	FAINT	Number of optional ACIS chips dropped	0	0
Observation mode	POINTING	POINTING	On-chip summing requested	N	N
Pointing RA	223.076332	223.0526472656587	Subarray requested	NONE	NONE
Pointing Dec	43.007099	43.02821160470829	Alternating exposures requested	N	N
Pointing Roll	98.674200	98.84698254604946	Primary exposure time	0.000000	3.2
SIM focus pos (mm)	-0.684267	-0.6828225247311905			
SIM defocus (mm)	0	0.001444936568705701			
SIM translation stage pos (mm)	-187.132523	-187.1254020033014			
SIM translation stage offset (mm)	-3	-3.007120579706367			
Observation start time	99268144.184000	99266998.164654			
Observation start date	2001-02-22T22:28:00	2001-02-22T22:09:58			
Observation end time	99298144.184000	99298677.840876			
Observation end date	2001-02-23T06:48:00	2001-02-23T06:57:57			
Read mode	TIMED	TIMED			

### 2.3 Aspect





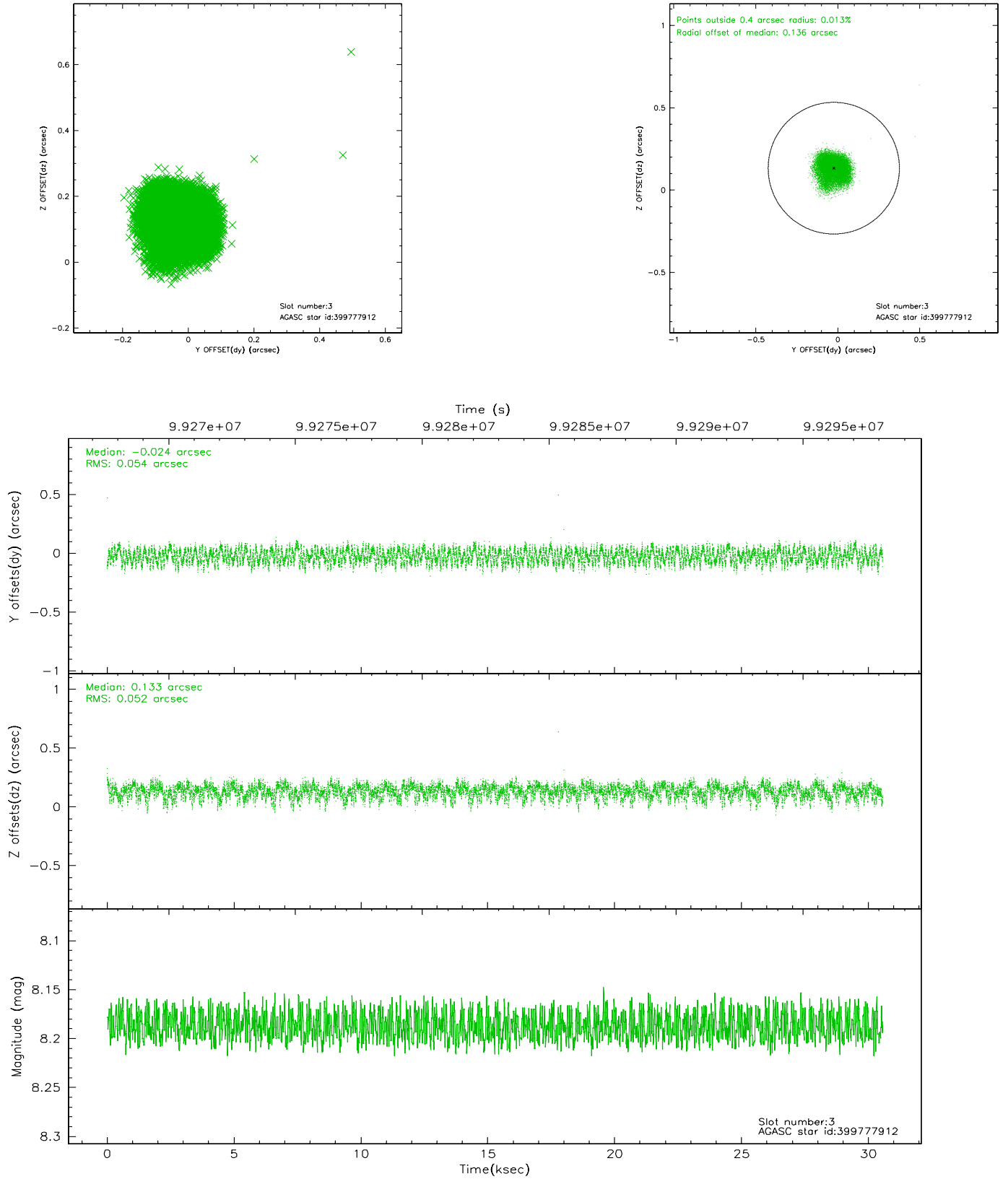
### Slot Statistics

slot	status	id	mag	n_pts	med_dy	med_dz	dr1	dr2	ra	dec	mean_y	mean_z
0	FID	ACIS-S-2	7.10	7455	-0.004	-0.012	0.007	0.011	0.000000	0.000000	-755.05	-1788.52
1	FID	ACIS-S-4	7.19	7455	-0.081	0.005	0.005	0.009	0.000000	0.000000	2158.14	119.86
2	FID	ACIS-S-5	7.23	7455	0.054	0.015	0.006	0.010	0.000000	0.000000	-1807.72	113.67
3	GUIDE	399777912	8.19	14907	-0.024	0.133	0.081	0.124	224.004611	42.792463	-1119.85	-2309.99
4	GUIDE	399777776	8.92	14844	-0.005	0.032	0.106	0.165	223.999033	42.858412	-882.78	-2328.89
5	GUIDE	399642384	9.68	14898	0.021	-0.098	0.100	0.162	222.533684	42.728698	-770.01	1568.46
6	GUIDE	399250512	10.21	14883	0.101	-0.159	0.139	0.220	222.480665	42.463397	-1691.07	1857.63
7	GUIDE	399647344	9.54	14901	-0.094	0.091	0.118	0.181	223.296429	43.683105	2320.13	-933.26

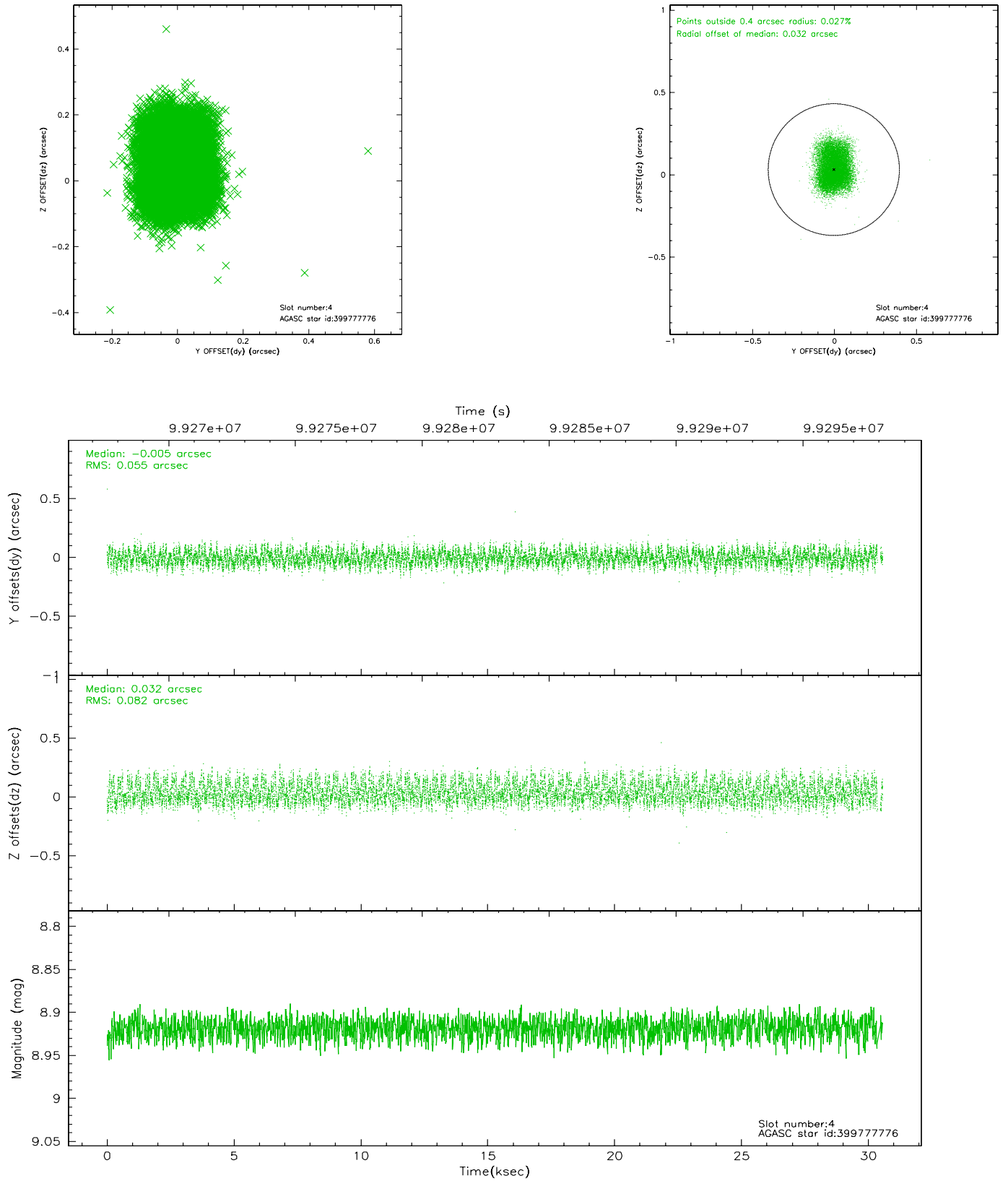


## 2.4 Star Slots

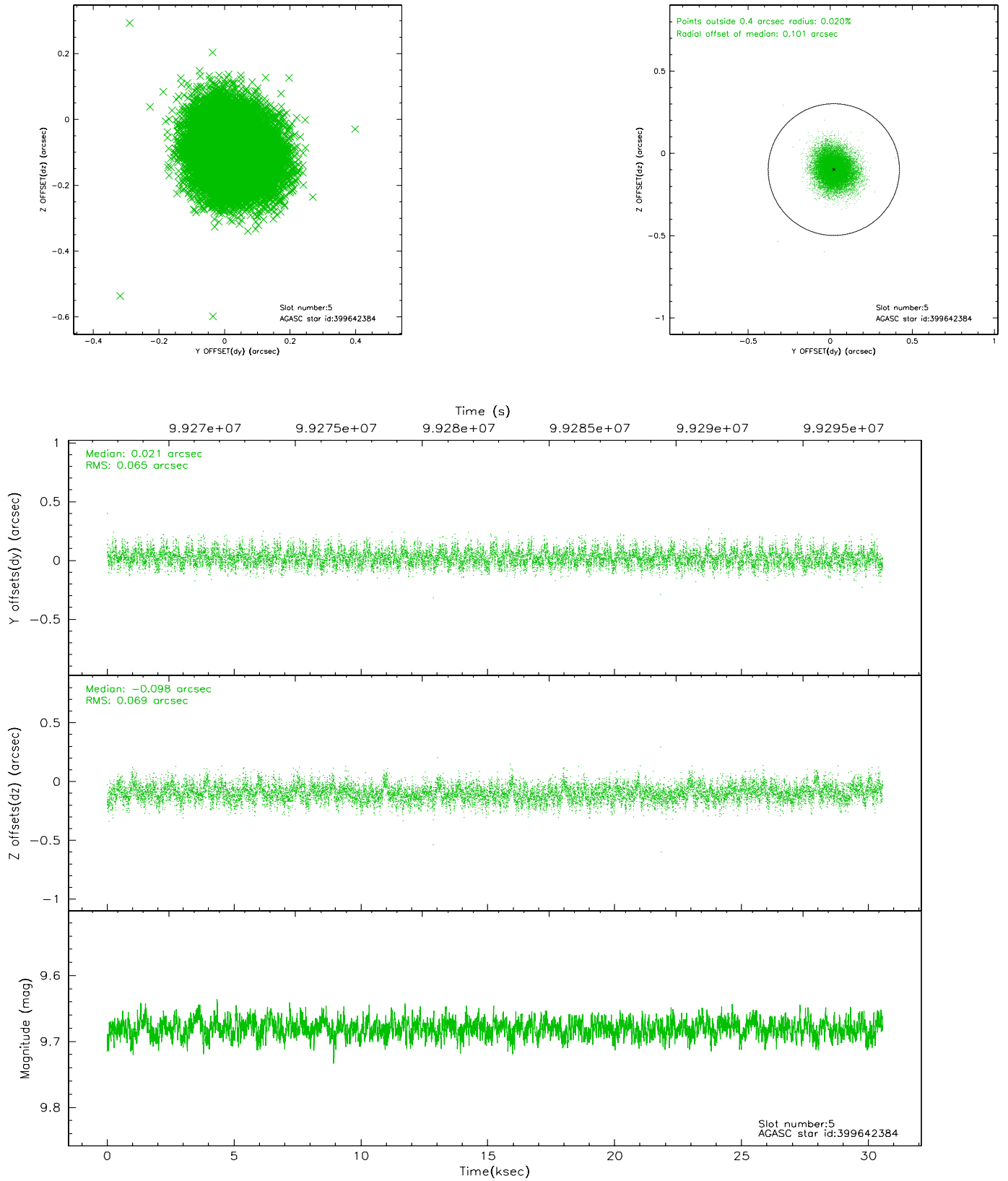
### 2.4.1 Slot 3



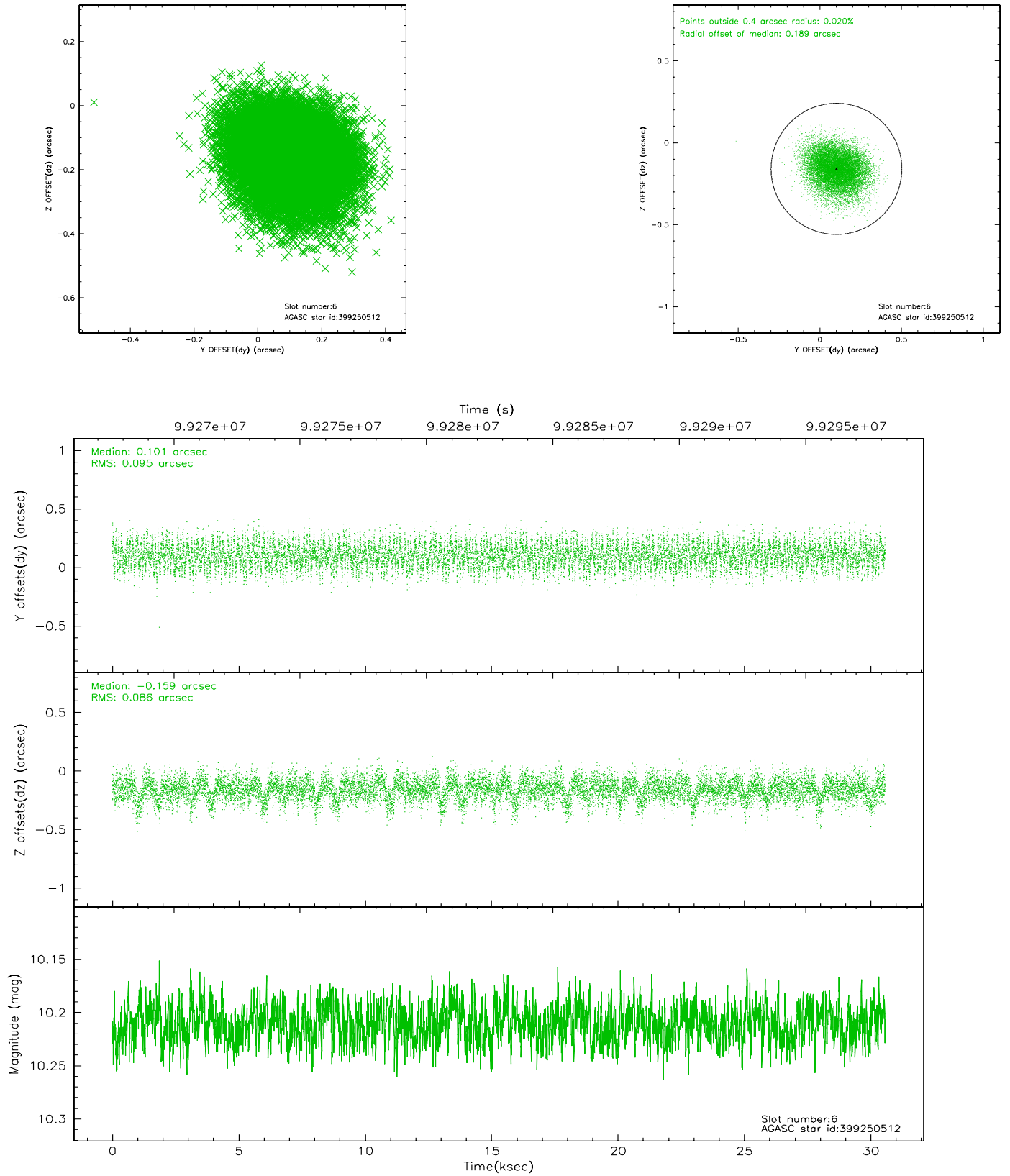
## 2.4.2 Slot 4



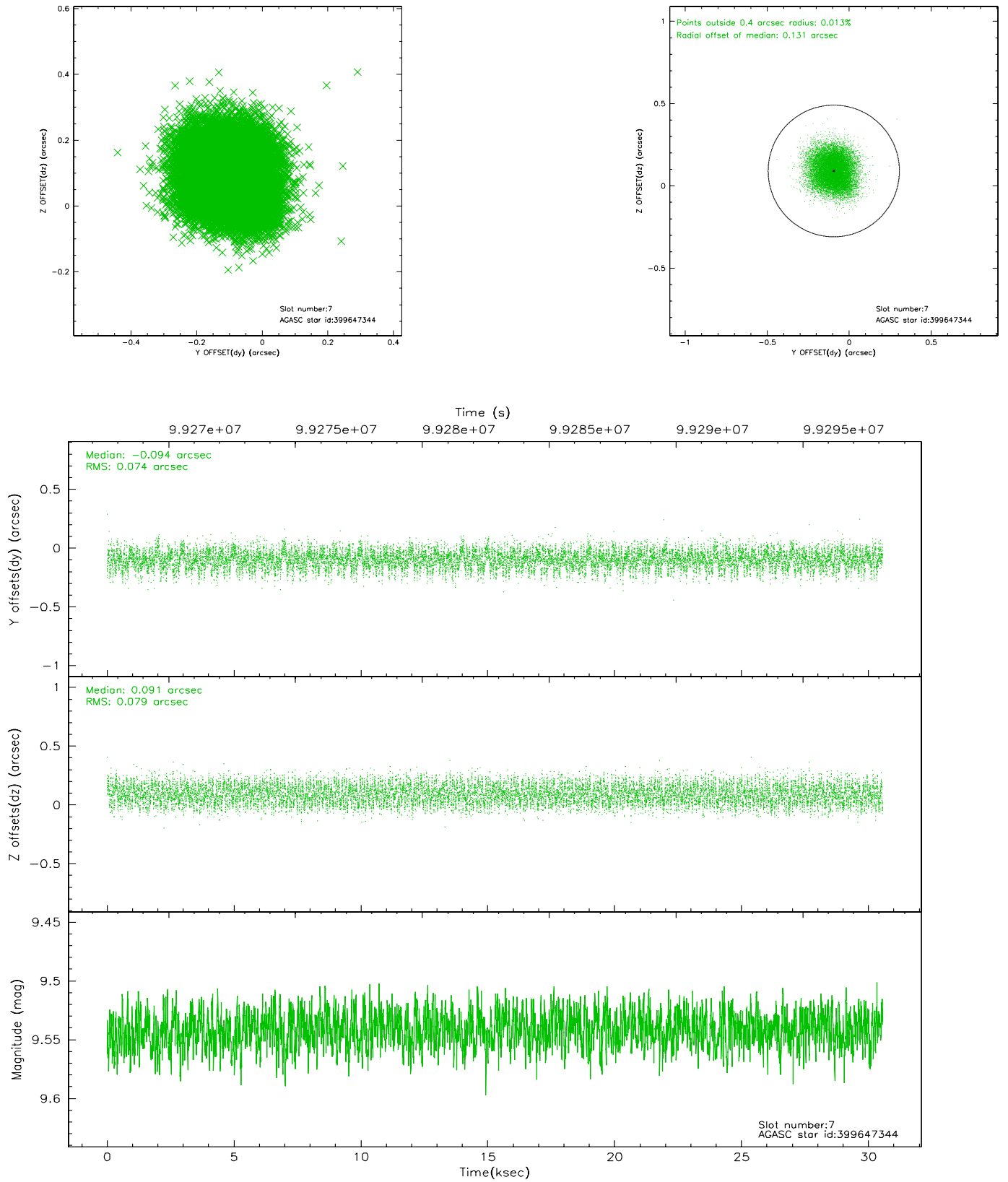
### 2.4.3 Slot 5



## 2.4.4 Slot 6

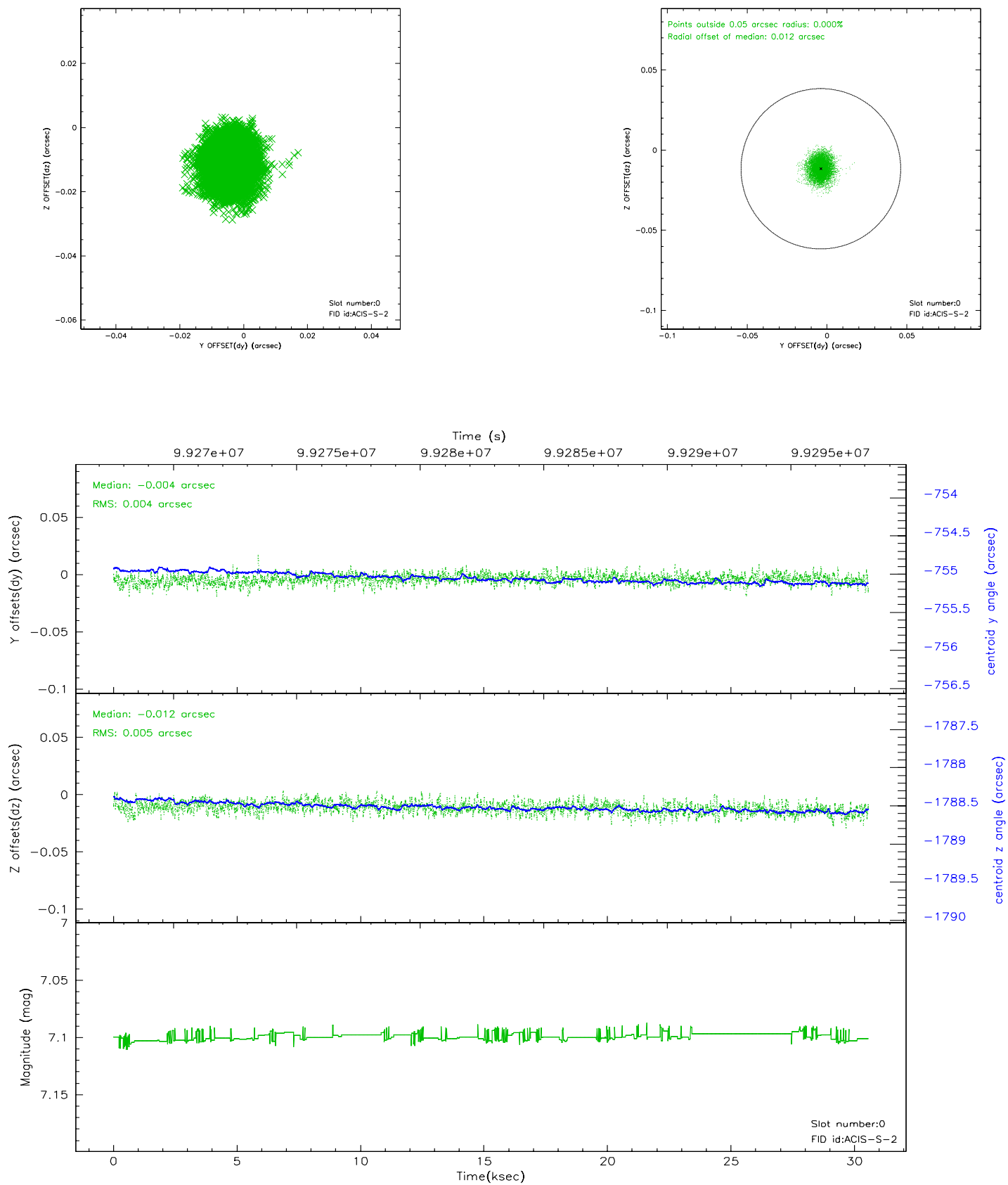


## 2.4.5 Slot 7

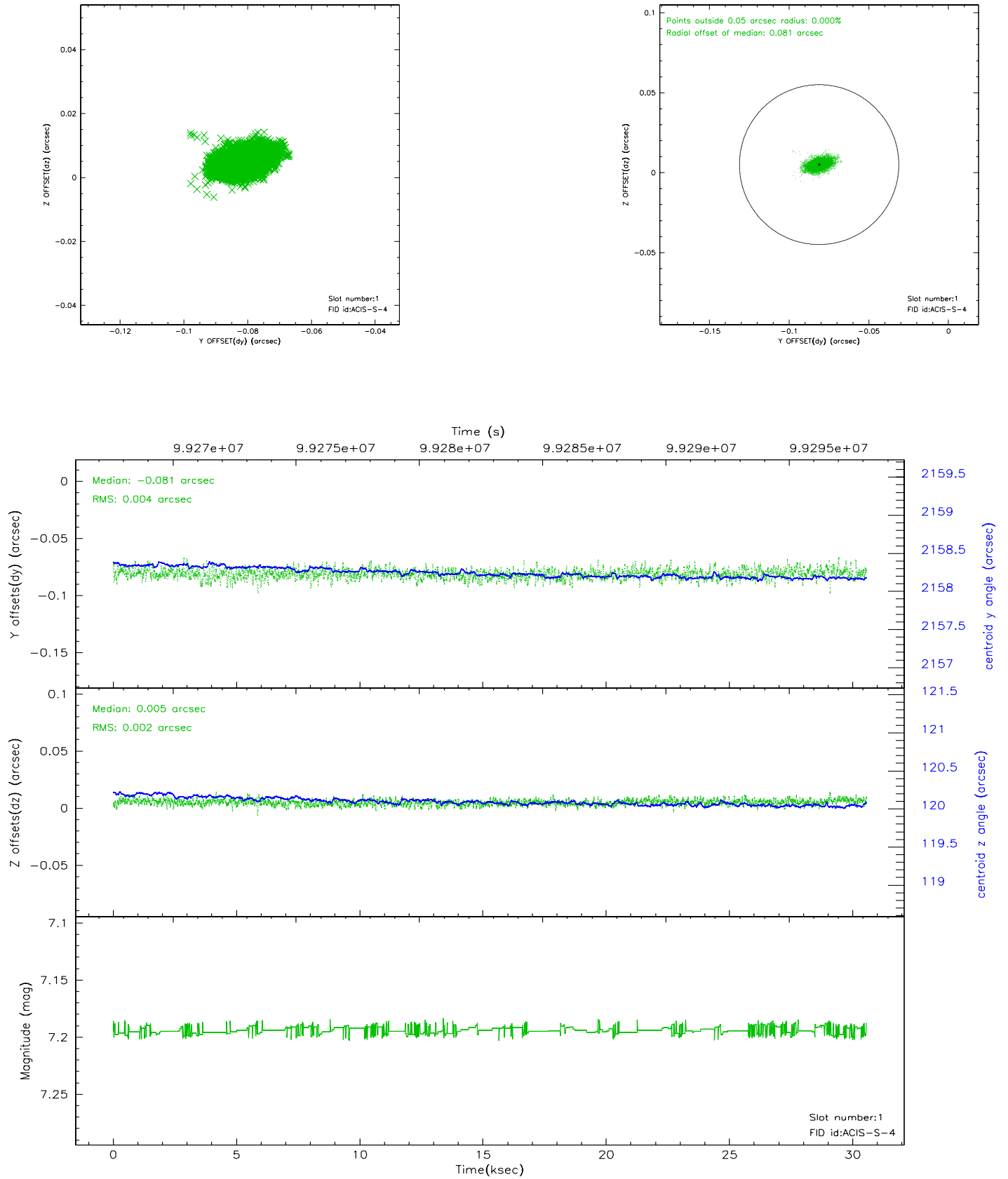


## 2.5 FID Slots

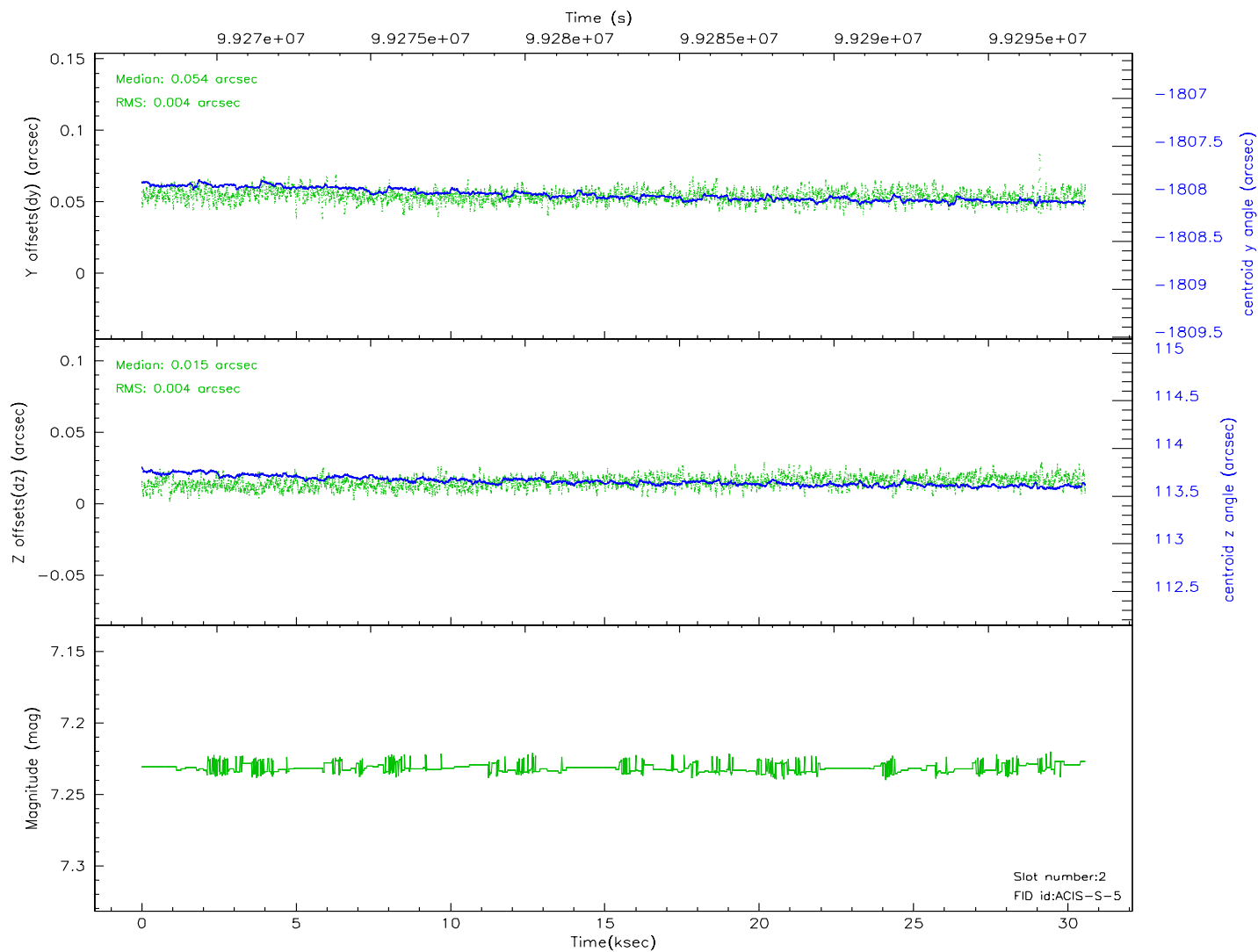
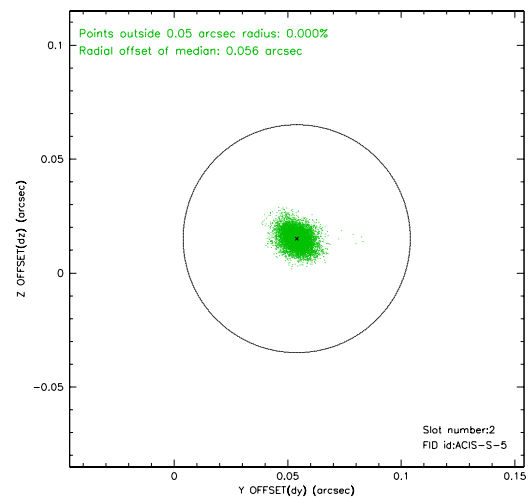
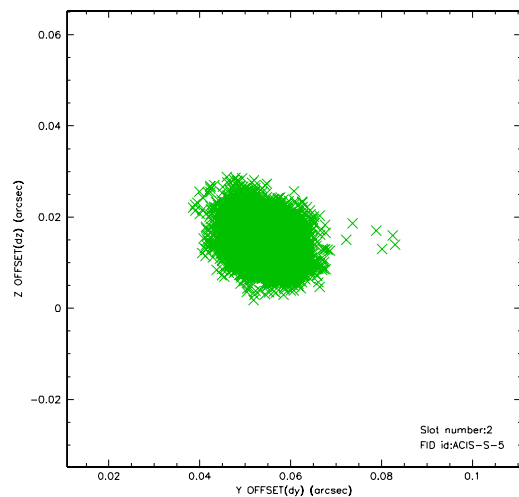
### 2.5.1 Slot 0



## 2.5.2 Slot 1

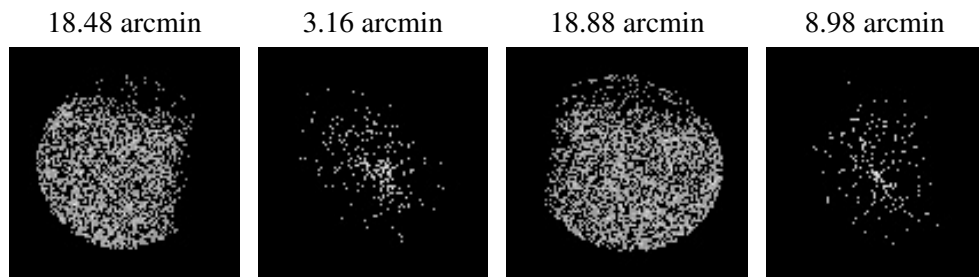


### 2.5.3 Slot 2





### 3 Point Sources



## A Summary

### A.1 Status

V&V Scientist	Jen Lauer
V&V Date (YYYY-MM-DD)	2006.11.09
V&V Edition	1
V&V Disposition and Status	OK
V&V Charge Time	29.923

### A.2 Comments