

V&V Reference Report

L2 ASCDS Version : 8.1.2

Observation 24 - L2 Version 5

Chandra X-Ray Center

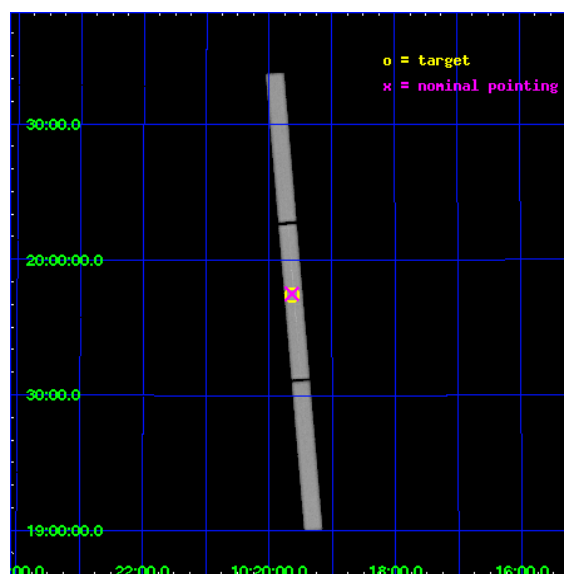
L2 Processing Date : Dec 5 2009

Contents

1	Front	2
2	OBI	3
2.1	OBI	3
2.1.1	Images	3
2.1.2	Parameters	4
2.1.3	Events	4
2.2	Compared Parameters	5
2.3	Aspect	6
2.4	Star Slots	9
2.4.1	Slot 3	9
2.4.2	Slot 4	10
2.4.3	Slot 5	11
2.4.4	Slot 6	12
2.4.5	Slot 7	13
2.5	FID Slots	14
2.5.1	Slot 0	14
2.5.2	Slot 1	15
2.5.3	Slot 2	16
3	Gratings	17
3.1	LETG Arm	17
A	Summary	19
A.1	Status	19
A.2	Comments	19

1 Front

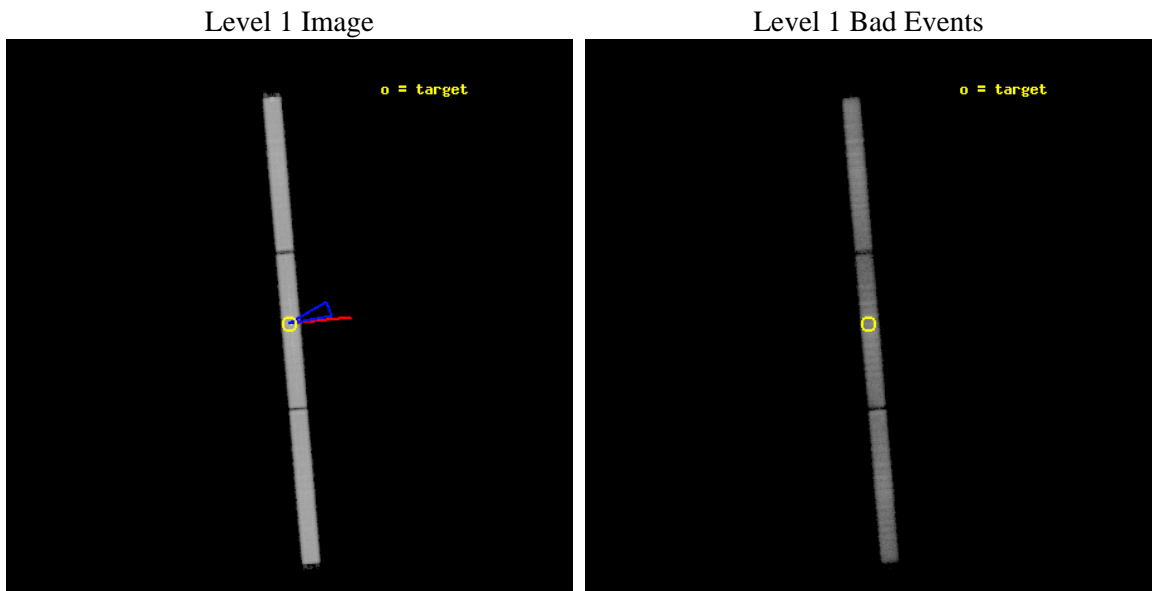
seq_num	200022	Sequence number
obs_id	24	Observation id
title	EMISSION FROM LATE-TYPE STARS	Proposal title
observer	Dr Steve Murray	Principal investigator
object	AD LEO	Source name
ra_targ	154.908333	Observer's specified target RA
dec_targ	19.870639	Observer's specified target Dec
ra_nom	154.90926008798	Nominal RA
dec_nom	19.875849180142	Nominal Dec
roll_nom	85.051114098827	Nominal Roll
revision	5	Processing version of data
ontime	10123.156617925	[s]
livetime	10058.605941187	Ontime multiplied by DTCOR
l2events	441093	Number of level 2 events



2 OBI

2.1 OBI

2.1.1 Images



2.1.2 Parameters

obi_num	1	Obi number	sched_exp_time	10000.000000	Scheduled observation exposure time
ascdsver	8.1.2	Processing system revision	ontime	10123.156617925	[s]
caldbver	4.1.4	 	ll events	709180	Number of level 1 events
date	2009-12-05T06:31:40	Date and time of file creation			
revision	5	Processing version of data			

2.1.3 Events

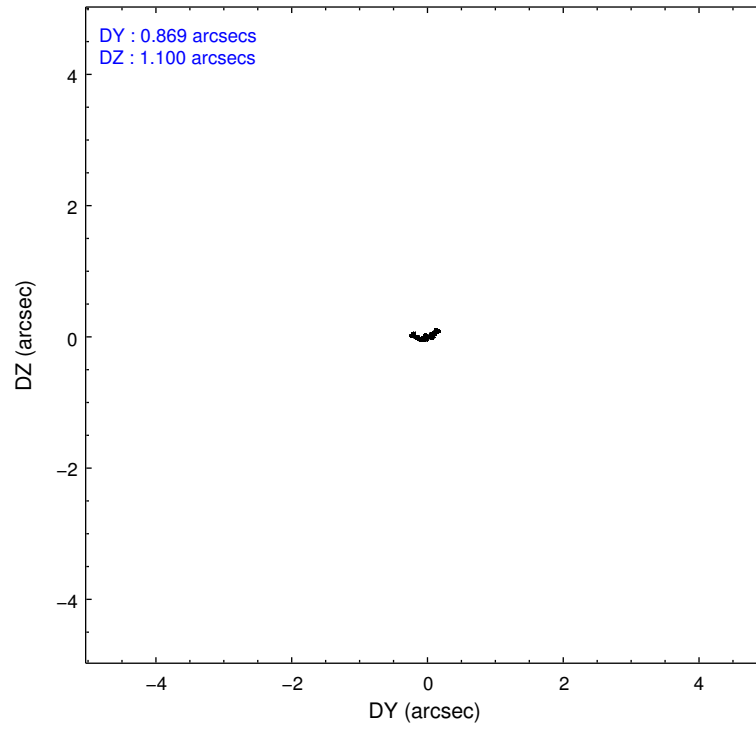
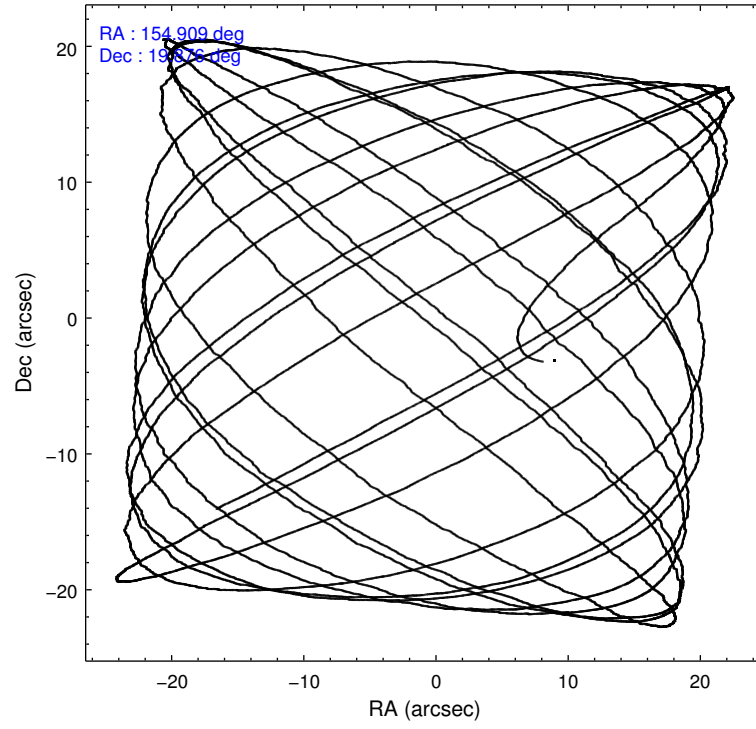
Level 1 Events

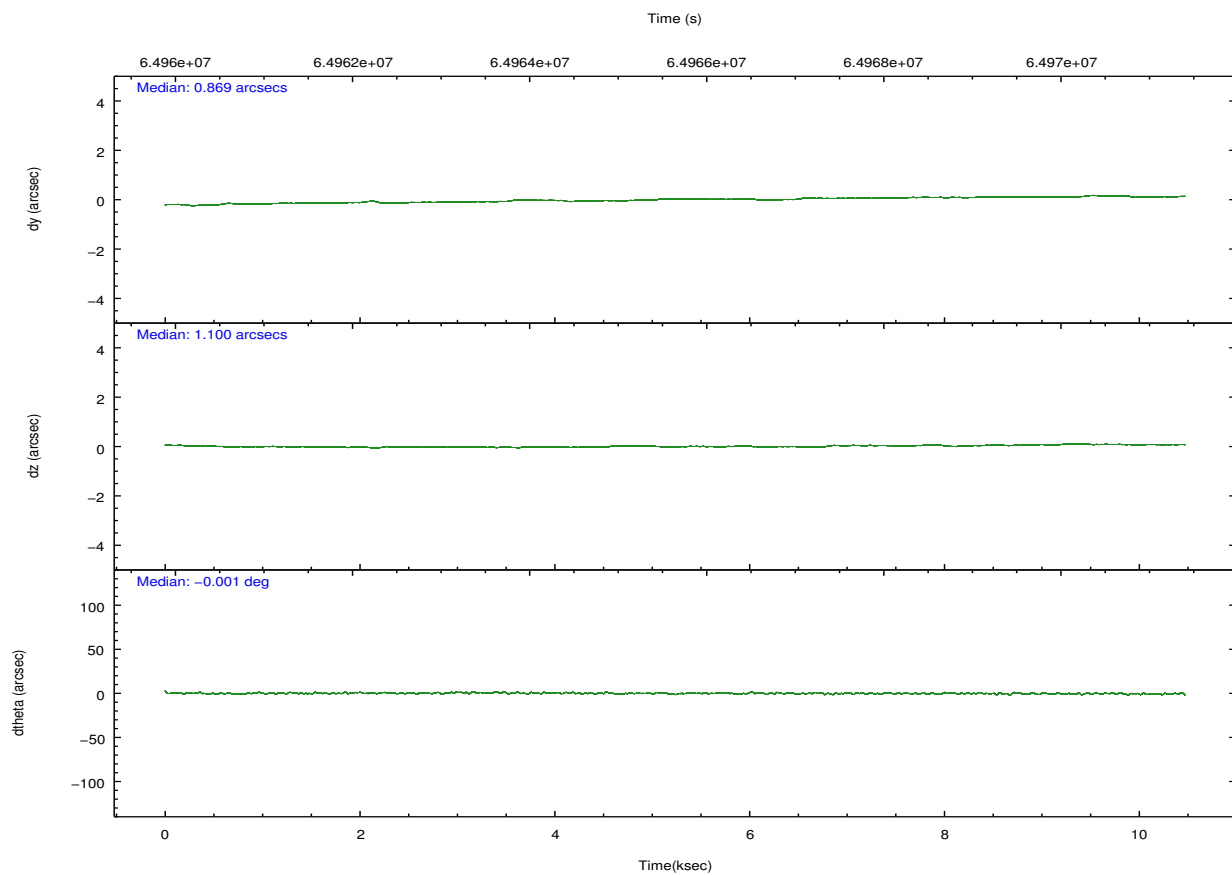
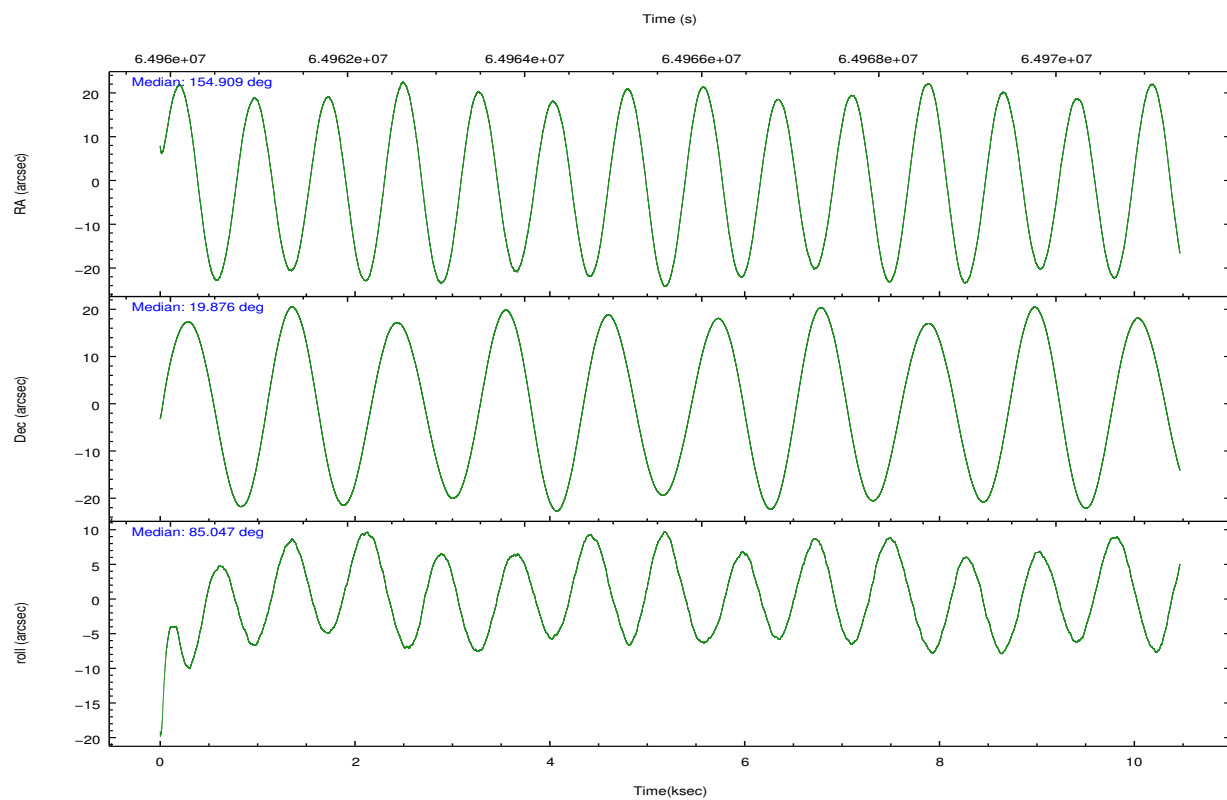
	segment 1	segment 2	segment 3
level 1 events	234847	237276	237057
rejected events	61787	66557	74824
rejected %	26%	28%	31%

2.2 Compared Parameters

Parameter	Planned	Actual	Parameter	Planned	Actual
Instrument	HRC	HRC	Obspar format version number	6	6
Detector	HRC-S	HRC-S	Obspar file type	PREDICTED	ACTUAL
Grating	LETG	LETG	Obspar update status	NONE	UPDATED
Data mode	OBSERVING	OBSERVING			
Observation mode	POINTING	POINTING			
Pointing RA	154.923129	154.9092600879804			
Pointing Dec	19.850013	19.87584918014229			
Pointing Roll	84.979088	85.05111409882687			
Roll angle	70.000000	70.000000			
Roll tolerance	10.000000	10.000000			
Roll constraint allows 180D rotation	N	N			
SIM focus pos (mm)	-1.429586	-1.428180813131781			
SIM defocus (mm)	0.1037507710433287	0.1051558262725154			
SIM translation stage pos (mm)	250.455976	250.4635187648994			
SIM translation stage offset (mm)	0	-0.007540371344731511			
Observation start time	64960876.184000	64959762.003926			
Observation start date	2000-01-22T20:40:12	2000-01-22T20:22:42			
Observation end time	64970876.184000	64971450.079351			
Observation end date	2000-01-22T23:26:52	2000-01-22T23:37:30			

2.3 Aspect



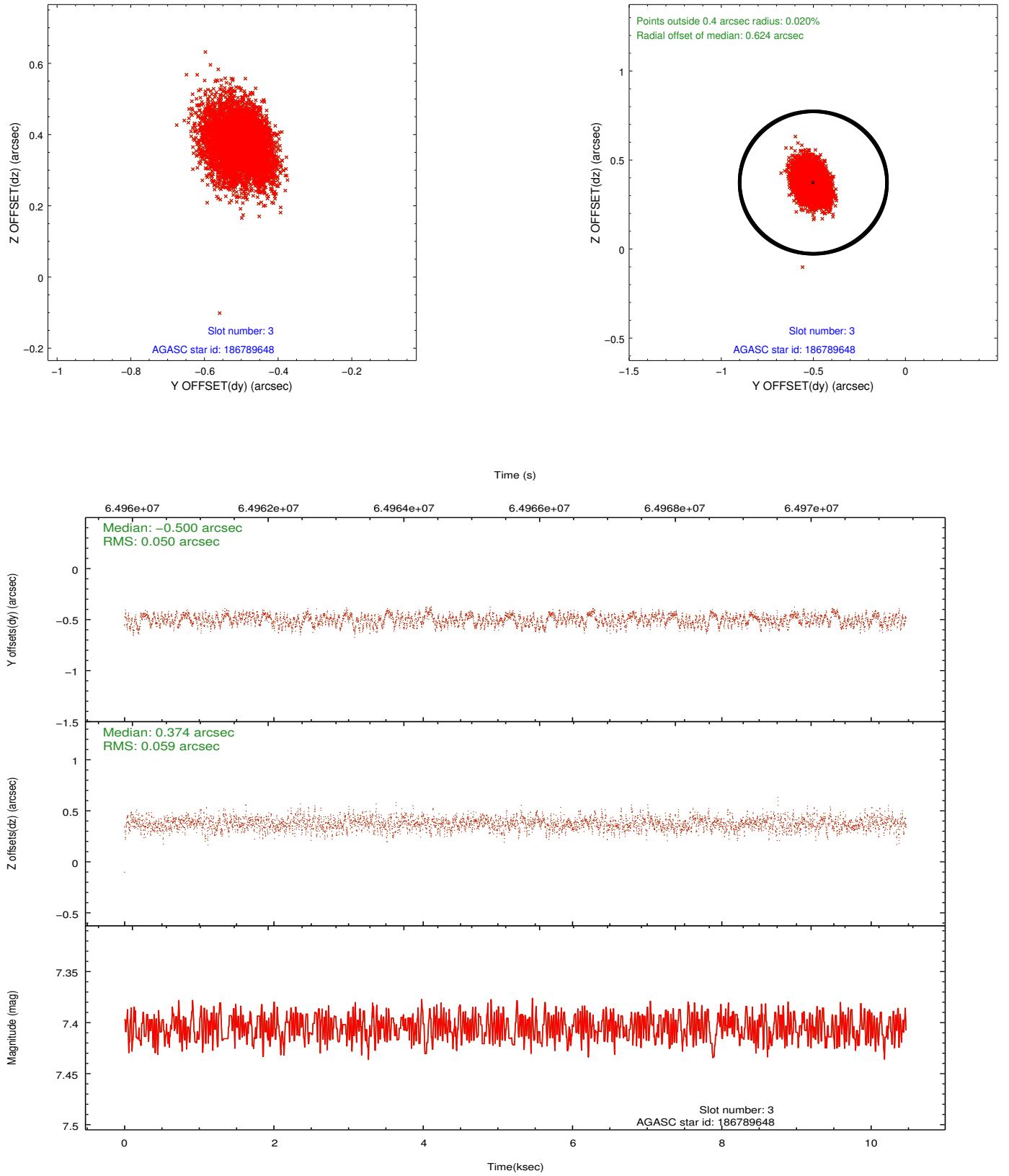


Slot Statistics

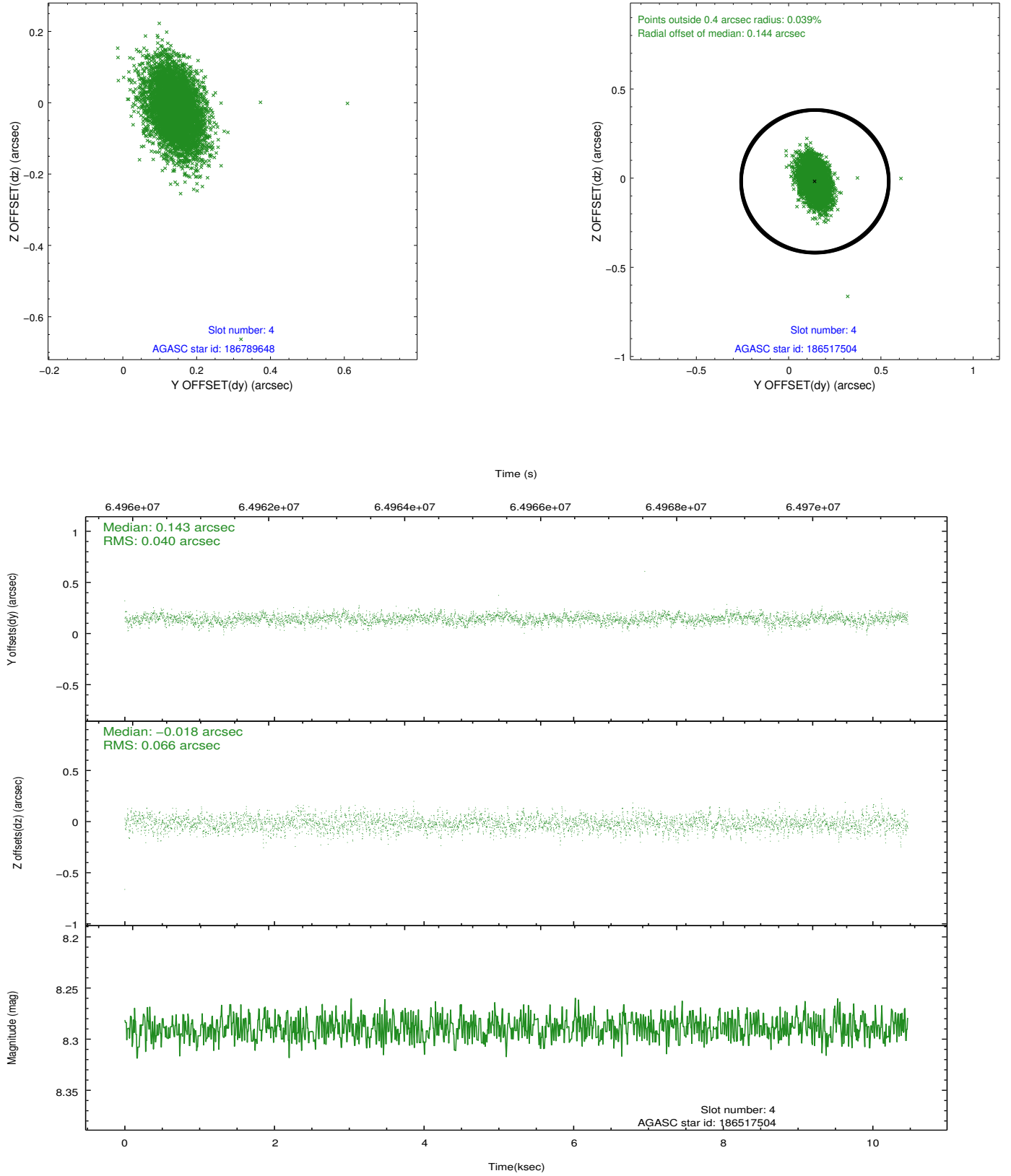
slot	status	id	mag	n_pts	med_dy	med_dz	dr1	dr2	ra	dec	mean_y	mean_z
0	FID	HRC-S-2	6.98	2554	0.133	-0.099	0.005	0.009	0.000000	0.000000	1244.80	-442.11
1	FID	HRC-S-3	7.01	2554	0.134	-0.099	0.005	0.009	0.000000	0.000000	-1157.07	580.01
2	BAD	HRC-S-4	6.95	2554	0.074	-0.002	0.015	0.028	0.000000	0.000000	1242.91	582.95
3	BAD	186789648	7.41	5108	-0.500	0.374	0.081	0.132	154.440273	20.003419	409.62	1675.81
4	GUIDE	186517504	8.29	5104	0.143	-0.018	0.078	0.138	155.199091	19.538995	-1032.33	-1030.04
5	GUIDE	186915152	8.63	5106	-0.066	-0.043	0.077	0.133	155.481319	20.053598	898.35	-1815.87
6	GUIDE	186385440	9.95	5105	0.428	-0.134	0.159	0.245	154.236108	19.402776	-1802.92	2183.13
7	GUIDE	186916704	10.00	5104	-0.007	-0.180	0.116	0.197	155.304733	20.260597	1586.47	-1153.68

2.4 Star Slots

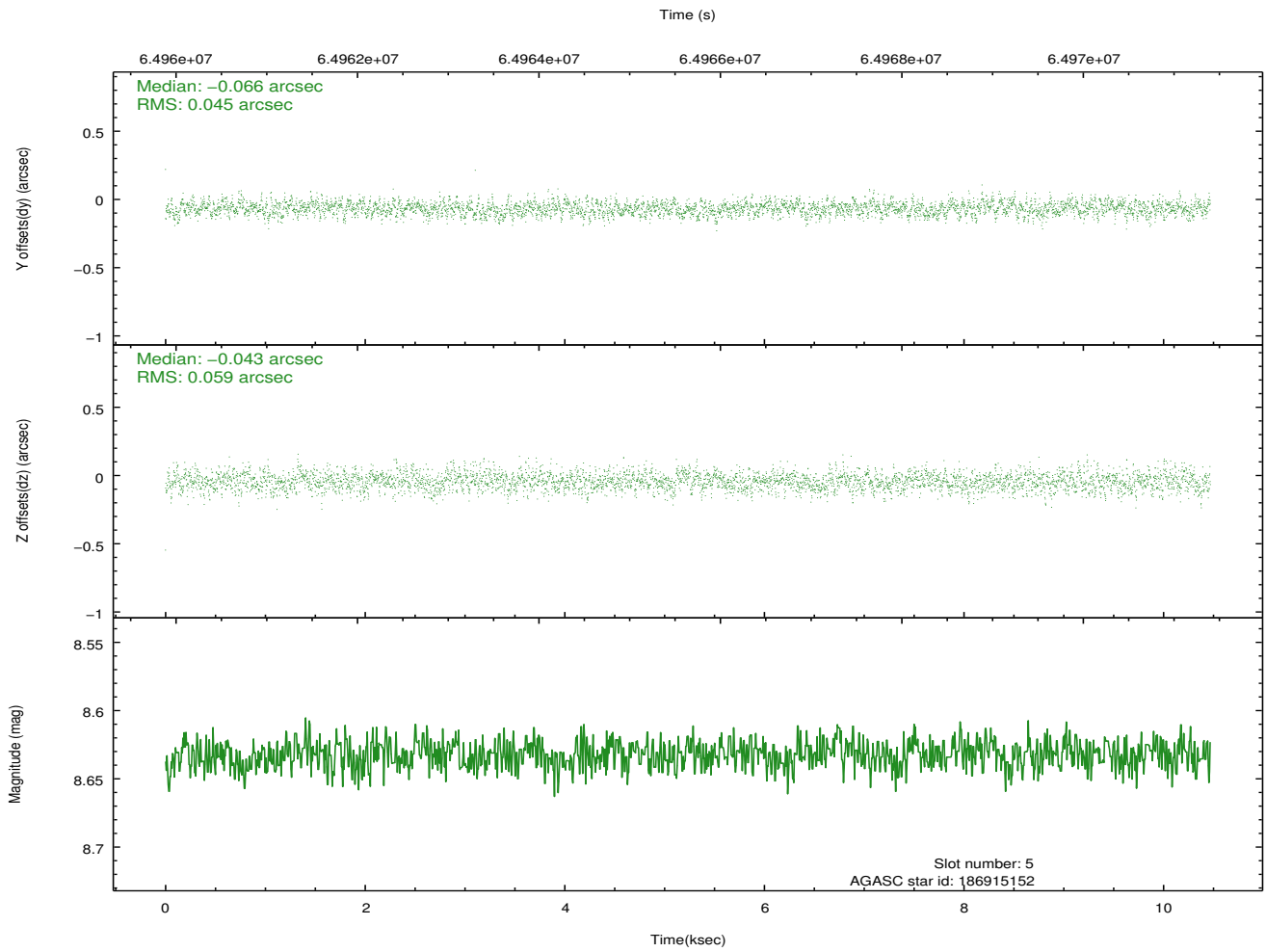
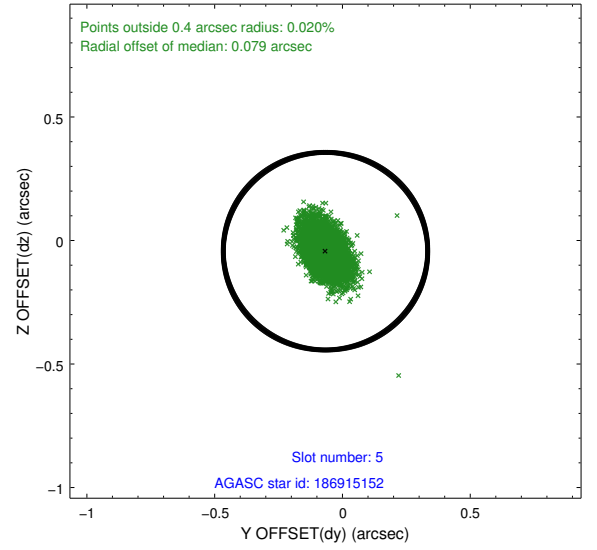
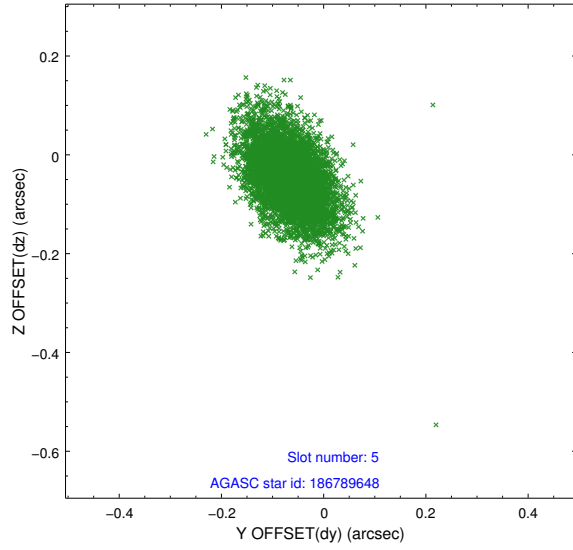
2.4.1 Slot 3



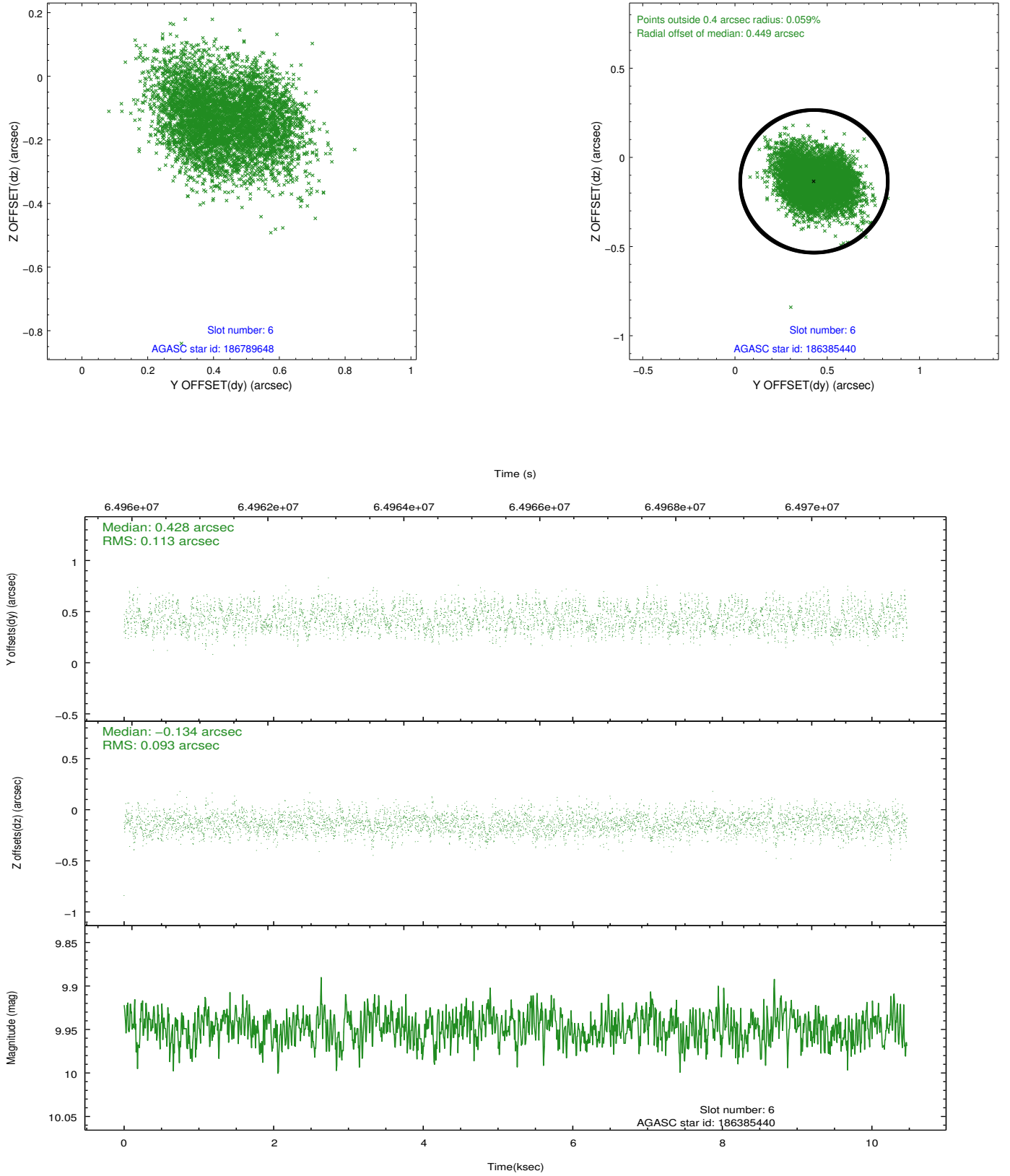
2.4.2 Slot 4



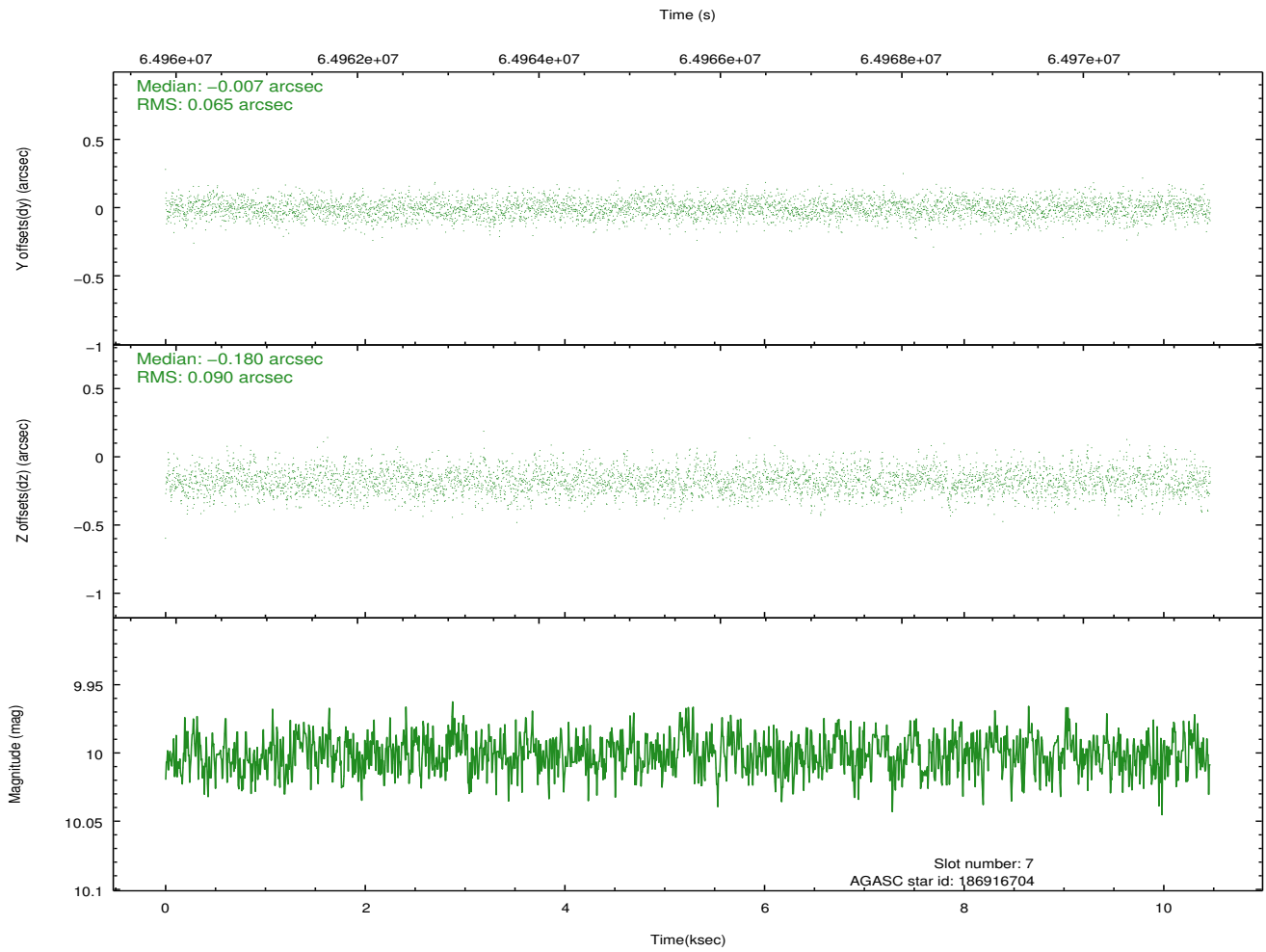
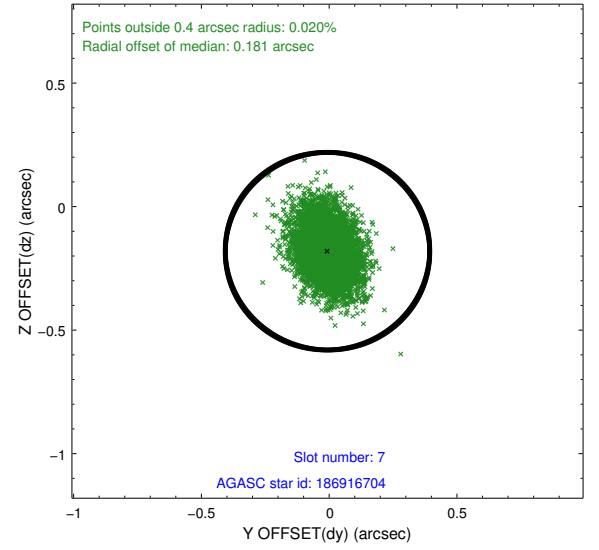
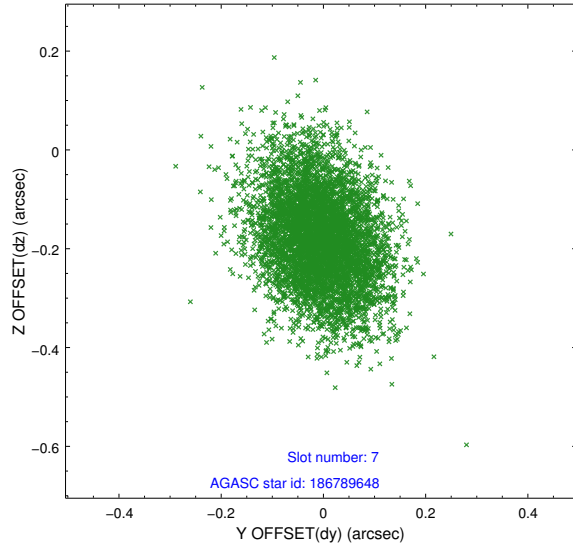
2.4.3 Slot 5



2.4.4 Slot 6

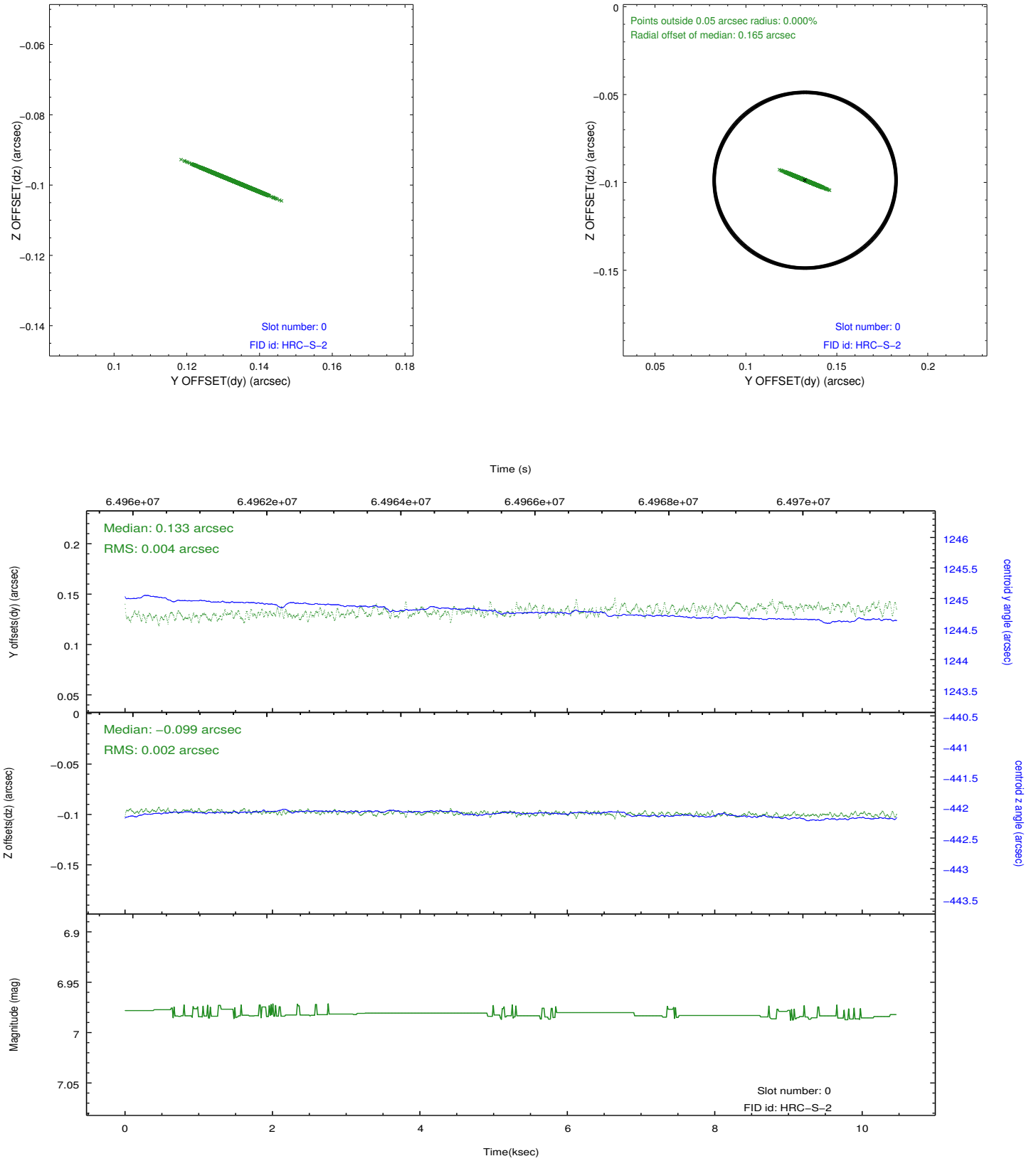


2.4.5 Slot 7

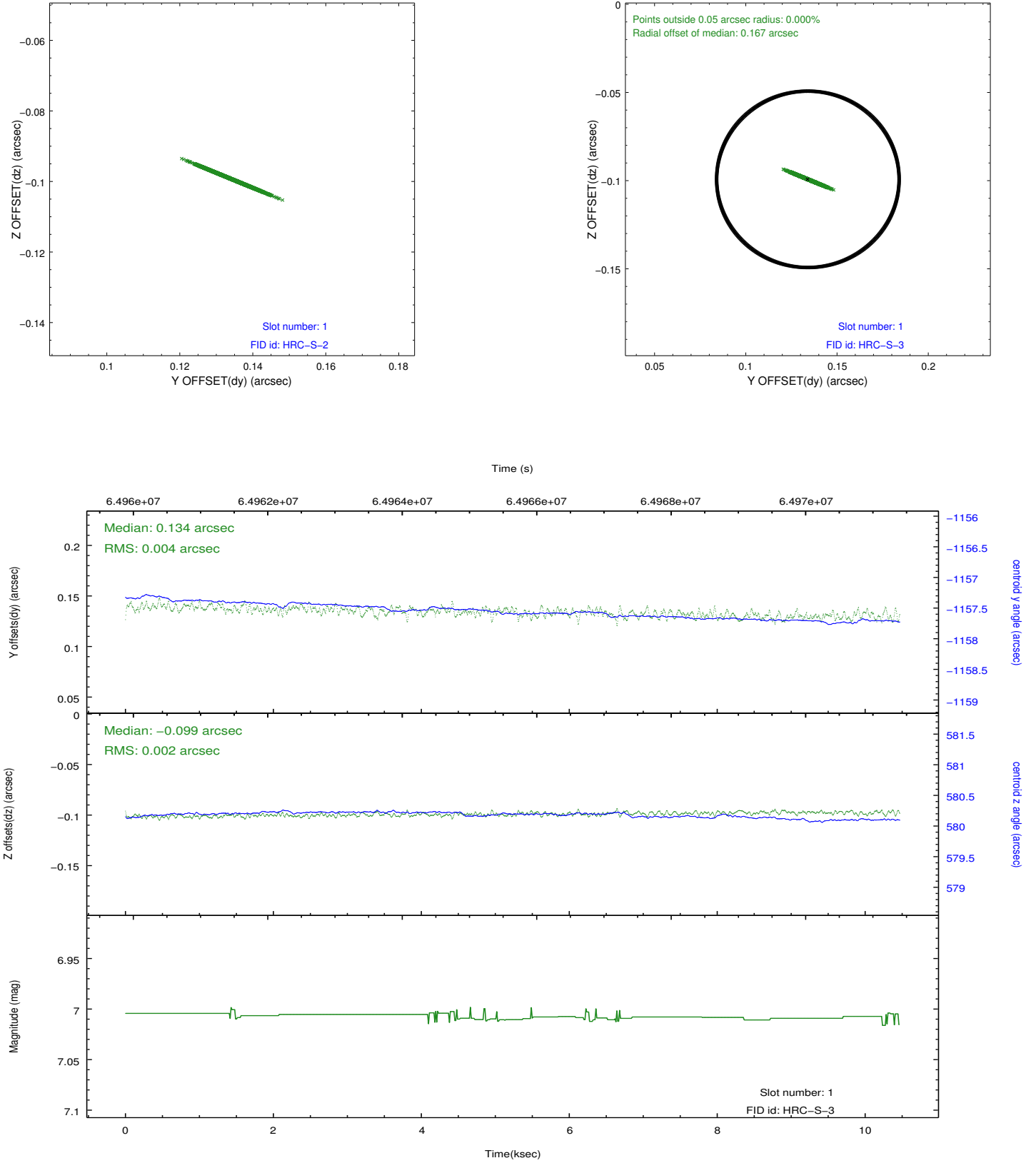


2.5 FID Slots

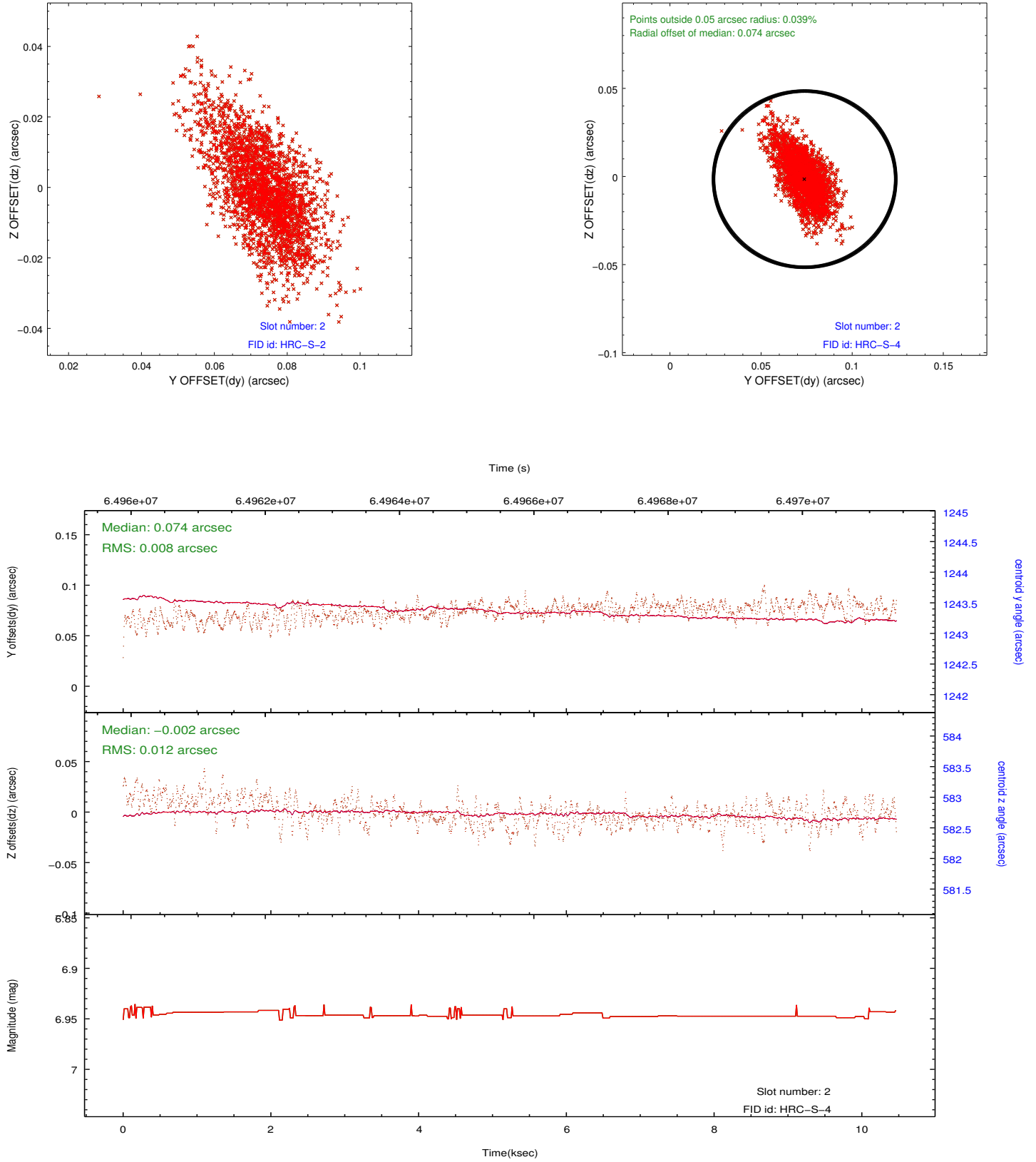
2.5.1 Slot 0



2.5.2 Slot 1

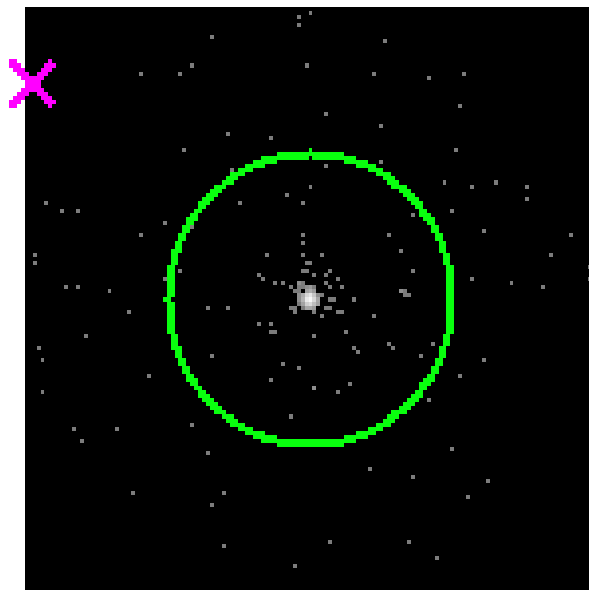


2.5.3 Slot 2

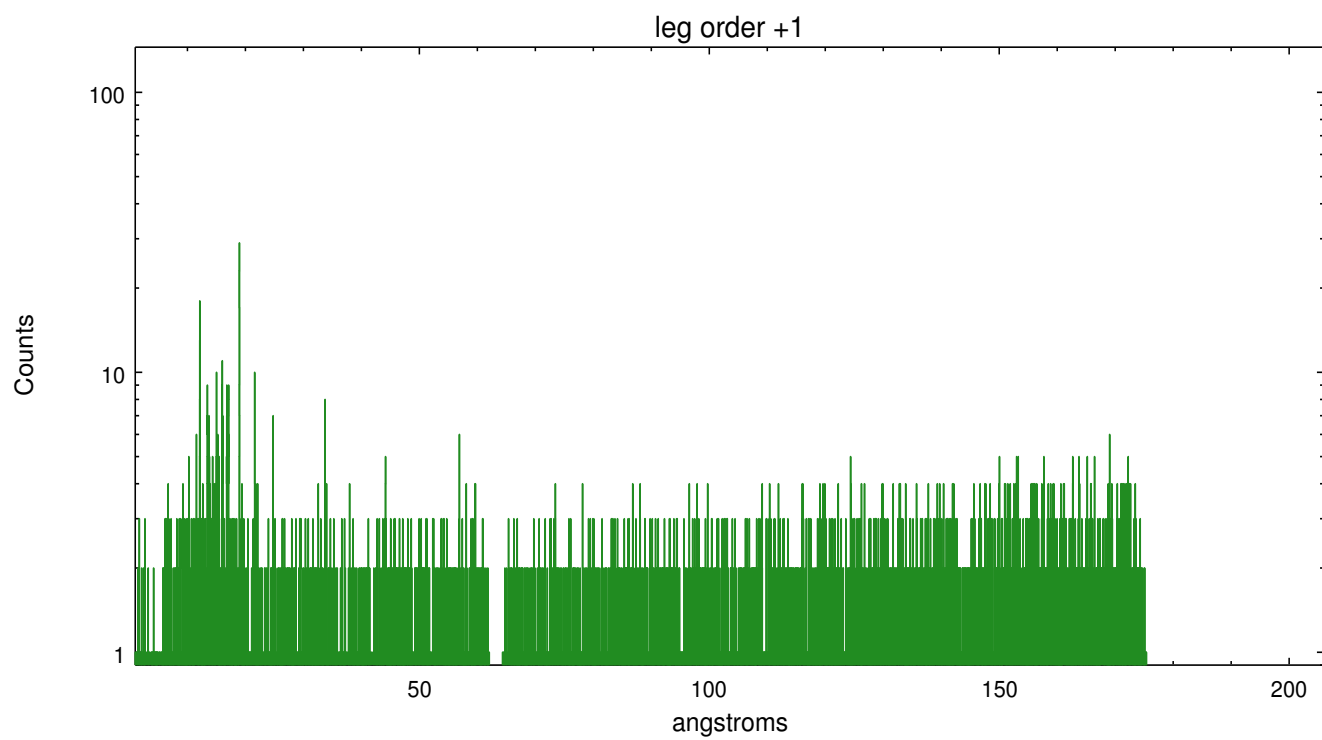
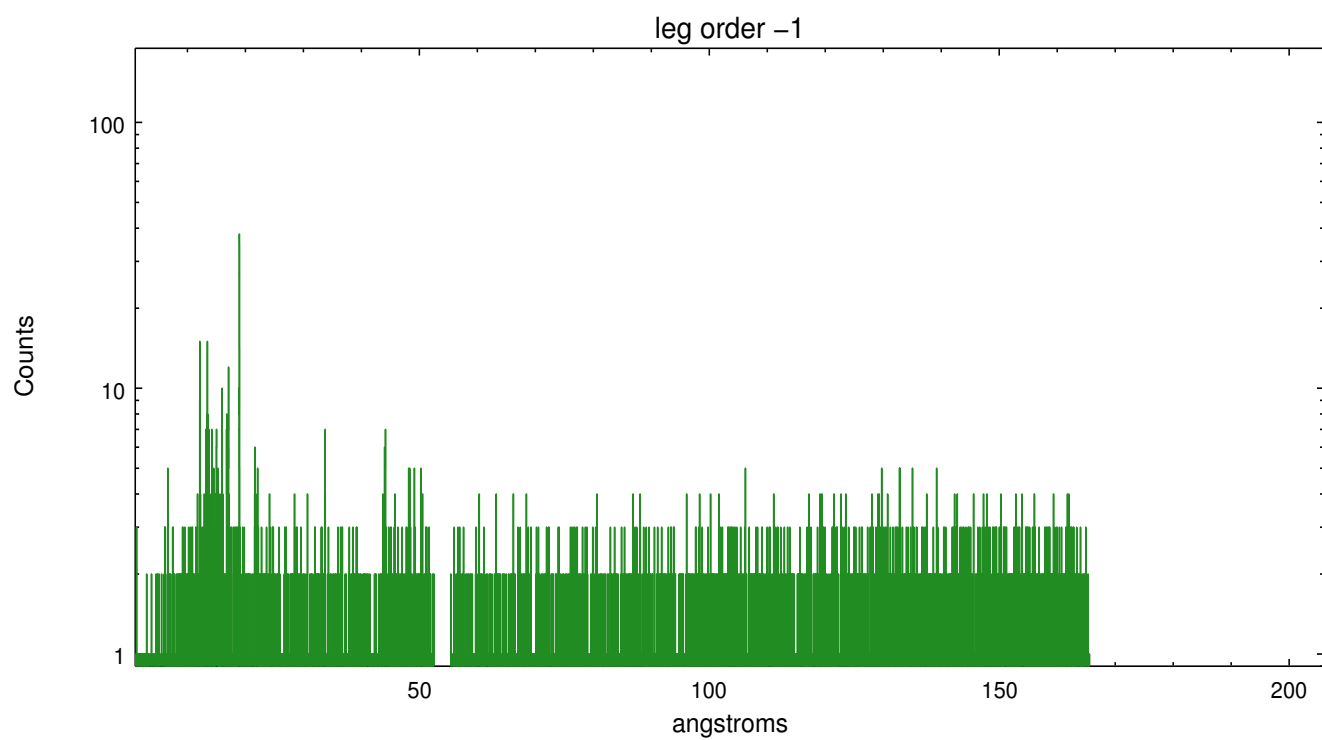


3 Gratings

3.1 LETG Arm



LETG Zero Order



A Summary

A.1 Status

V&V Scientist	Joy Nichols
V&V Date (YYYY-MM-DD)	2010.04.01
V&V Edition	1
V&V Disposition and Status	OK
V&V Charge Time	10.121

A.2 Comments

Actual roll (85.05 deg) does not comply with roll constraint (70 +/- 10 deg).

===

The fid light in slot 2 and the guide star in slot 3 were removed from the aspect solution due to poor data quality. The aspect solution is not expected to be degraded by removing one fid light and guide star from the solution.