

V&V Reference Report

L2 ASCDS Version : 7.6.9

Observation 2054 - L2 Version 001
Chandra X-Ray Center

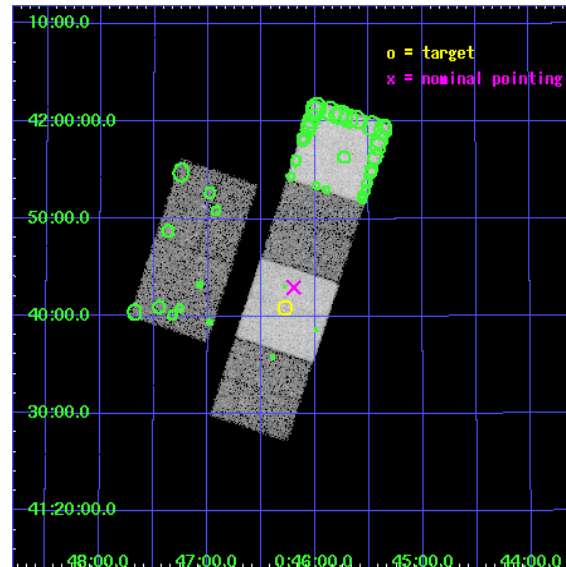
L2 Processing Date : Dec 11 2006

Contents

1	Front	2
2	OBI	3
2.1	OBI	3
2.1.1	Images	3
2.1.2	Bias	3
2.1.3	Parameters	4
2.1.4	Events	4
2.2	Compared Parameters	5
2.3	Aspect	6
2.4	Star Slots	9
2.4.1	Slot 3	9
2.4.2	Slot 4	10
2.4.3	Slot 5	11
2.4.4	Slot 6	12
2.4.5	Slot 7	13
2.5	FID Slots	14
2.5.1	Slot 0	14
2.5.2	Slot 1	15
2.5.3	Slot 2	16
3	Point Sources	17
A	Summary	18
A.1	Status	18
A.2	Comments	18

1 Front

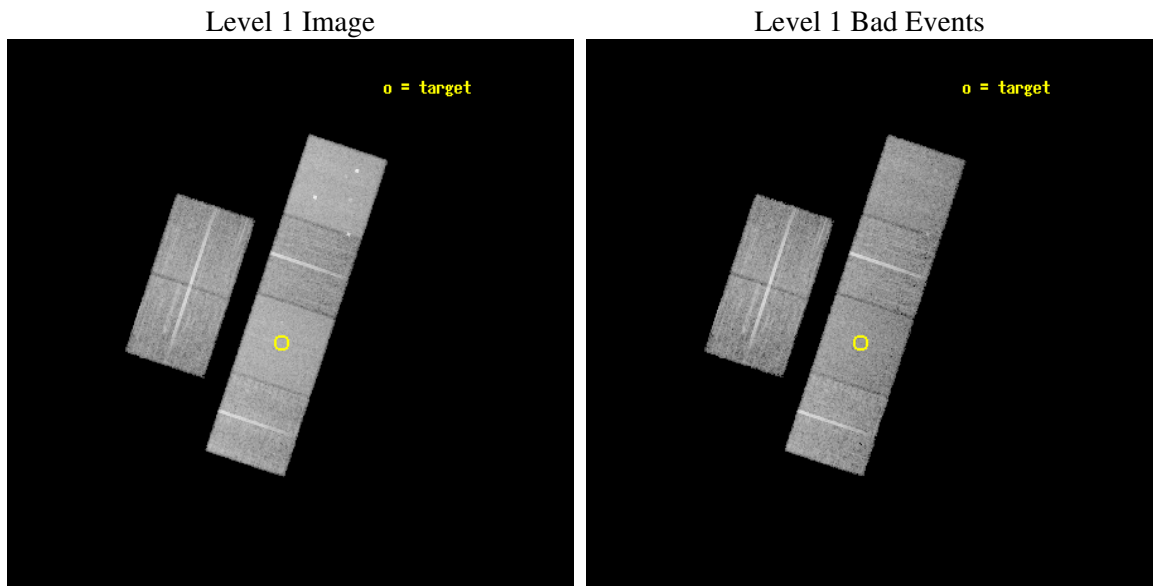
seq_num	600188
obs_id	2054
title	2001: A SPACE CENSUS -- SUPERSOFT X-RAY SOURCES AND OTHER X-RAY SOURCES IN M31
observer	Dr Rosanne Di Stefano
object	M31_3
dtcycle	0
cycle	P
ra_targ	11.569583
dec_targ	41.681944
ra_nom	11.549716629425
dec_nom	41.716492420833
roll_nom	108.3367571076
revision	2
ontime	14710.4000137
livetime	14524.128071187
ontime2	14707.159083381
ontime3	14707.159023523
ontime5	14707.159053445
ontime6	14703.918103218
ontime7	14710.4000137
ontime8	14707.159193039
l2events	156432



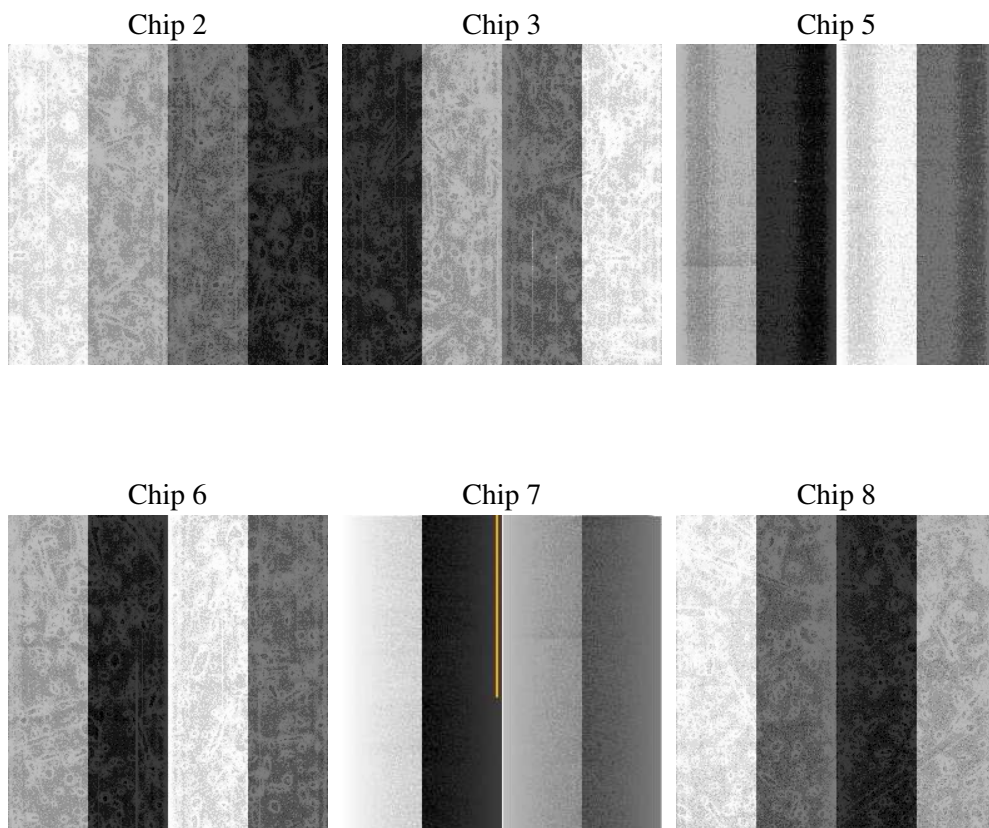
2 OBI

2.1 OBI

2.1.1 Images



2.1.2 Bias



2.1.3 Parameters

obi_num	0
ascdsver	7.6.9
caldbver	3.2.4
date	2006-12-11T12:16:40
revision	2

sched_exp_time	14955.317000
ontime	14717.37058495
ontime2	14714.129684538
ontime3	14714.12962468
ontime5	14714.129624695
ontime6	14710.888704374
ontime7	14717.37058495
ontime8	14714.129654601
l1events	682778

2.1.4 Events

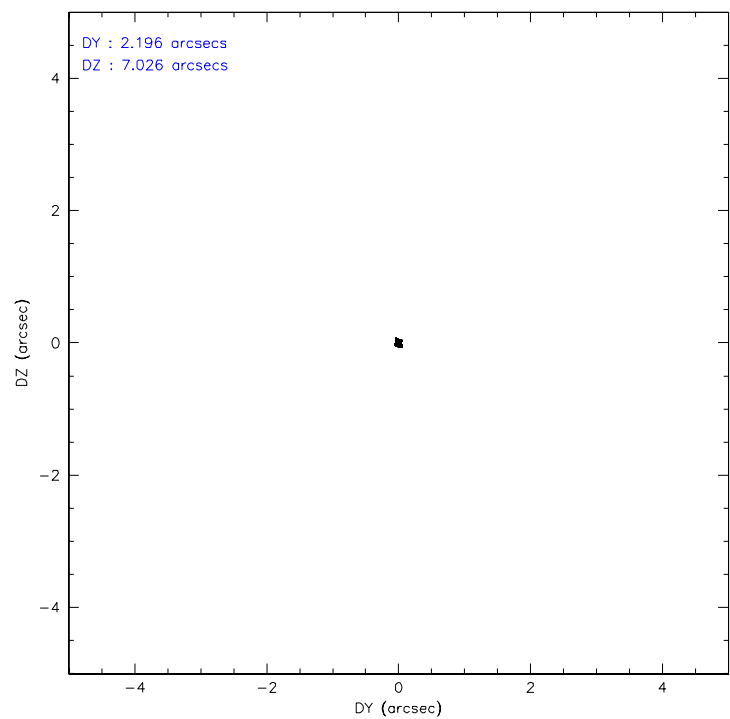
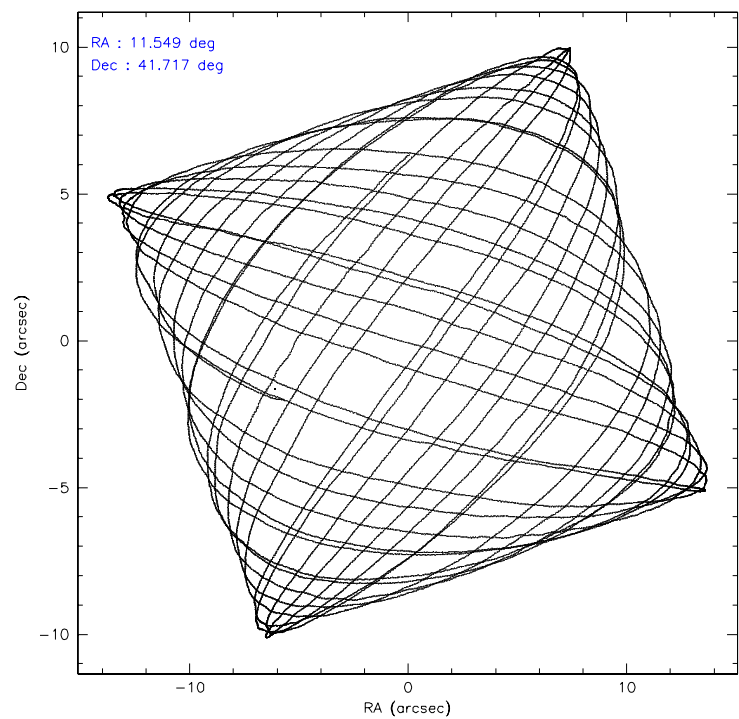
	ccd 2	ccd 3	ccd 5	ccd 6	ccd 7	ccd 8
level 1 events	99397	93996	143081	95273	129337	121694
rejected events	88410	82875	75535	83771	75023	97978
rejected %	88%	88%	52%	87%	58%	80%

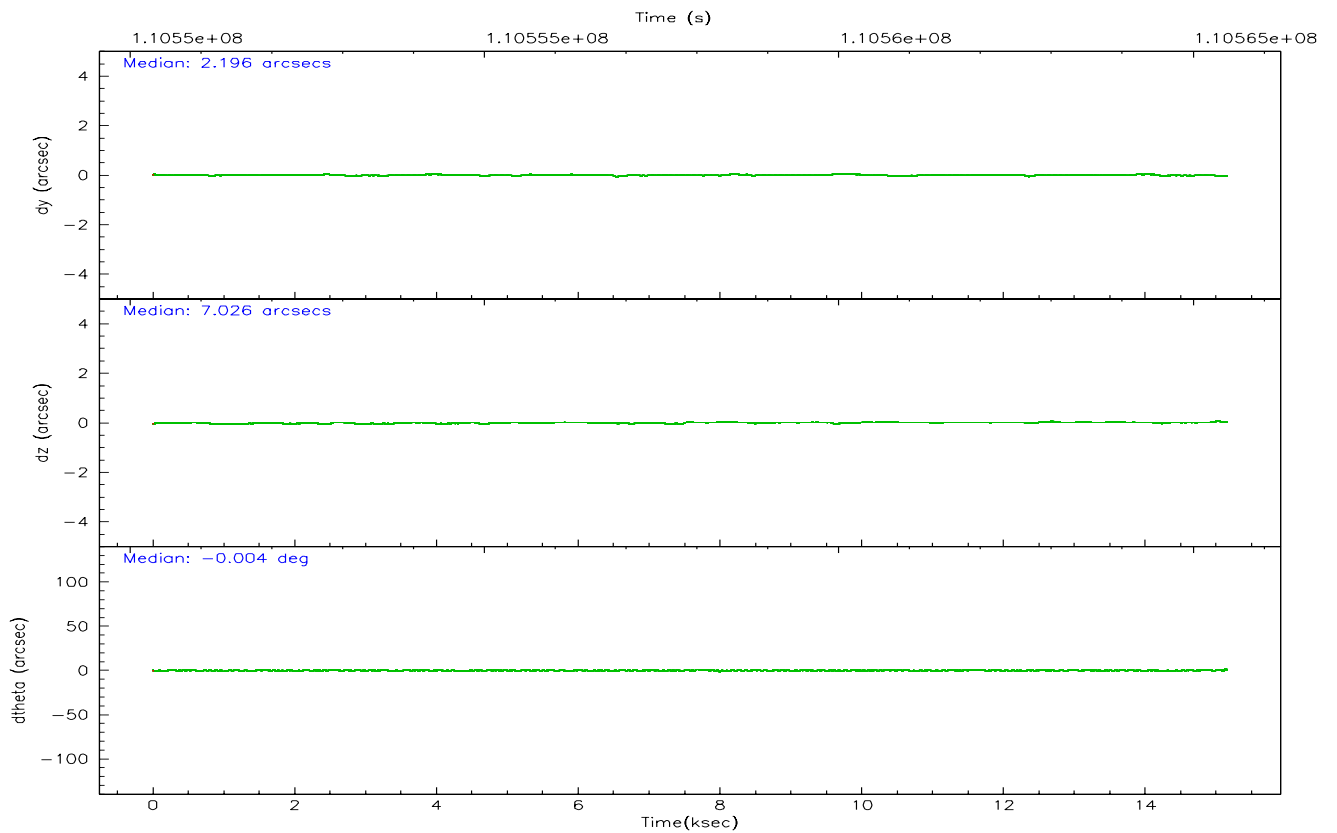
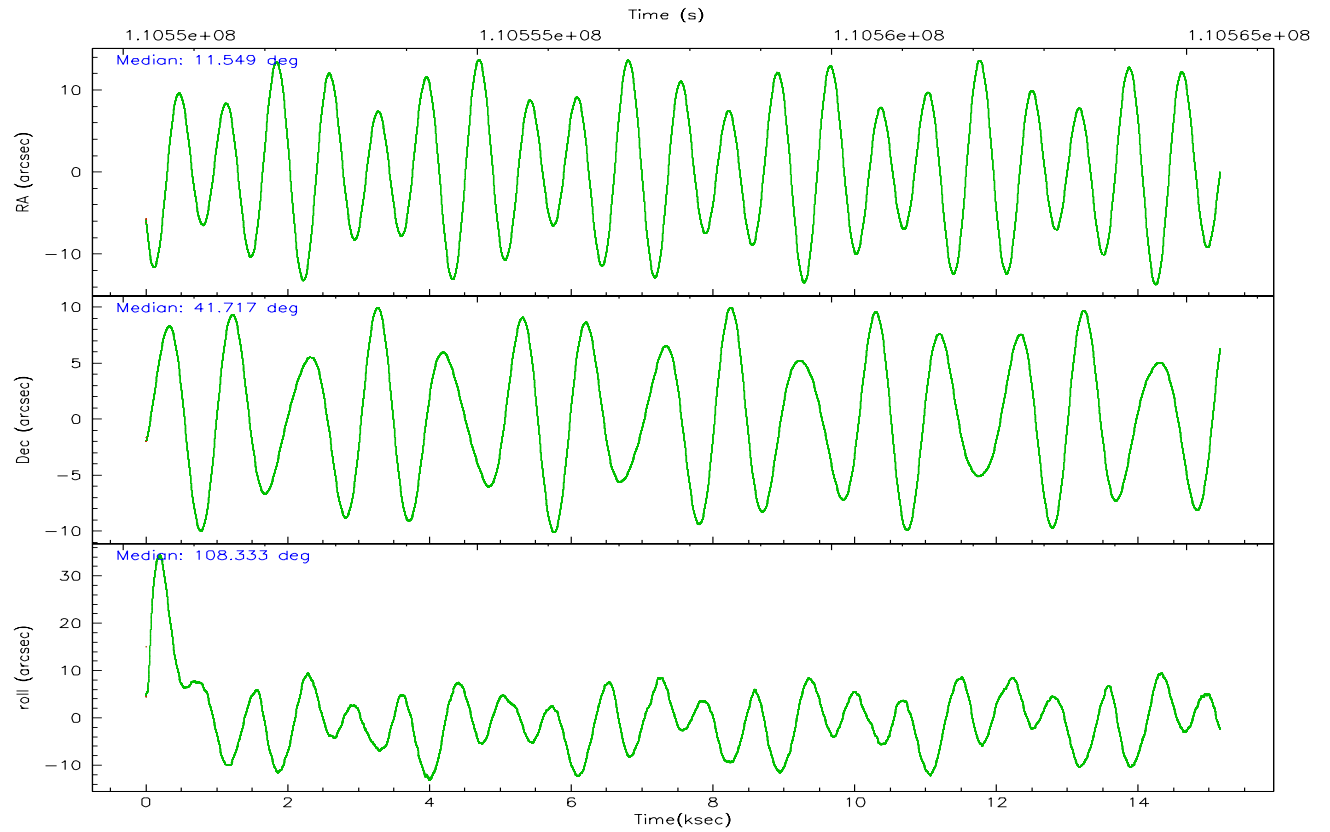
	ccd 2	ccd 3	ccd 5	ccd 6	ccd 7	ccd 8
grade 0 events	4909	4928	6744	4886	4086	7698
	4%	5%	4%	5%	3%	6%
grade 1 events	37	44	248	42	76	62
	0%	0%	0%	0%	0%	0%
grade 2 events	2338	2201	20368	2226	13004	5040
	2%	2%	14%	2%	10%	4%
grade 3 events	998	980	1851	1168	3106	2654
	1%	1%	1%	1%	2%	2%
grade 4 events	954	1098	1922	1078	2962	2448
	0%	1%	1%	1%	2%	2%
grade 5 events	3328	3617	6782	3947	8299	5074
	3%	3%	4%	4%	6%	4%
grade 6 events	1791	1919	36694	2147	31171	5879
	1%	2%	25%	2%	24%	4%
grade 7 events	85042	79209	68472	79779	66633	92839
	85%	84%	47%	83%	51%	76%

2.2 Compared Parameters

Parameter	Planned	Actual	Parameter	Planned	Actual
Instrument	ACIS	ACIS	Obspar format version number	6	6
Detector	ACIS-235678	ACIS-235678	Obspar file type	PREDICTED	ACTUAL
Grating	NONE	NONE	Obspar update status	NONE	UPDATED
Data mode	FAINT	FAINT	Number of optional ACIS chips dropped	0	0
Observation mode	POINTING	POINTING	On-chip summing requested	N	N
Pointing RA	11.577309	11.54971662942507	Subarray requested	NONE	NONE
Pointing Dec	41.698577	41.71649242083345	Alternating exposures requested	N	N
Pointing Roll	108.161768	108.3367571076009	Primary exposure time	0.000000	3.2
SIM focus pos (mm)	-0.684267	-0.6828225247311905			
SIM defocus (mm)	0	0.001444936568705701			
SIM translation stage pos (mm)	-190.132523	-190.145094680475			
SIM translation stage offset (mm)	0	0.01257209746719923			
Observation start time	110550521.184000	110550138.64016			
Observation start date	2001-07-03T12:27:37	2001-07-03T12:22:18			
Observation end time	110565476.184000	110565790.39077			
Observation end date	2001-07-03T16:36:52	2001-07-03T16:43:10			
Read mode	TIMED	TIMED			

2.3 Aspect



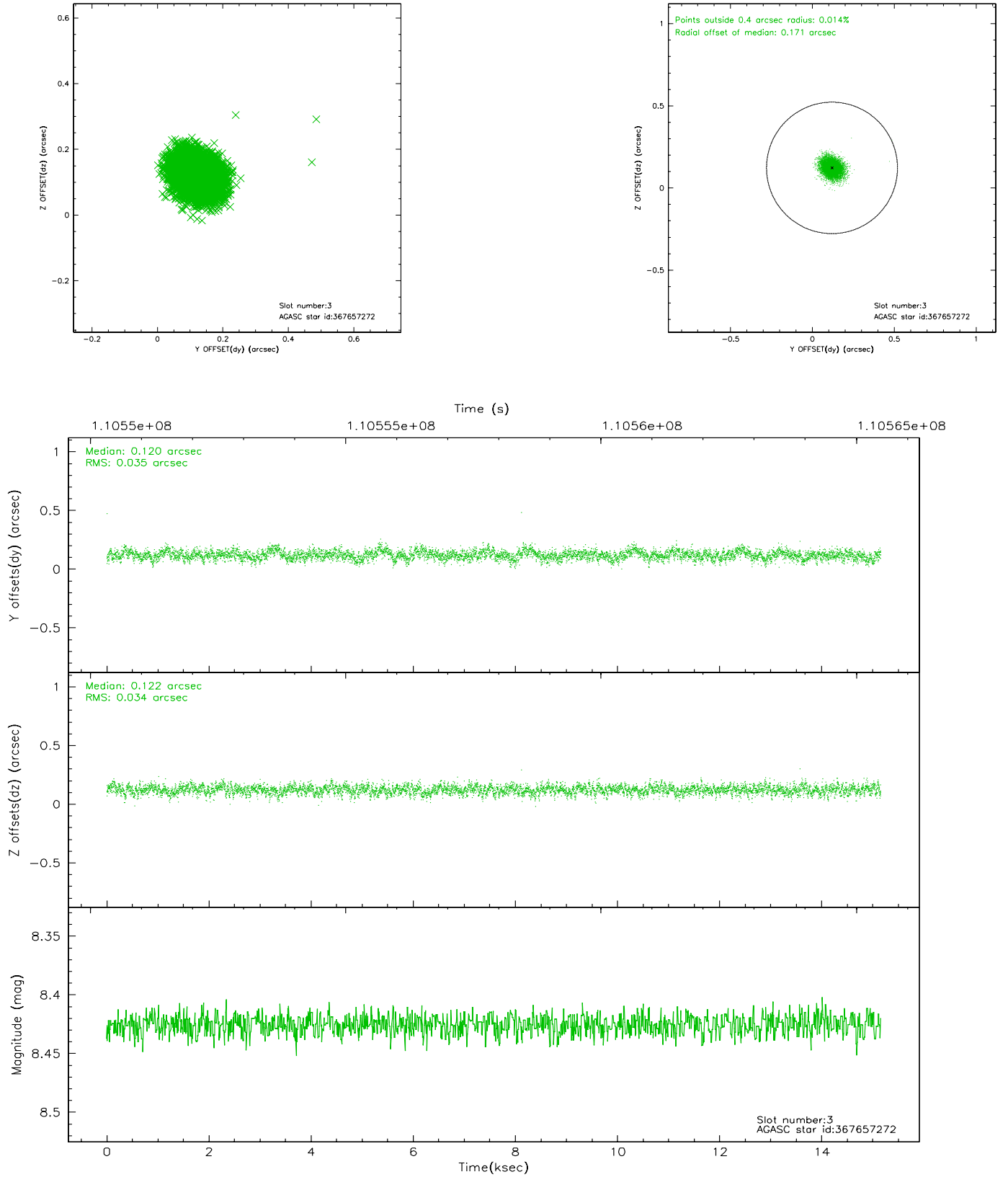


Slot Statistics

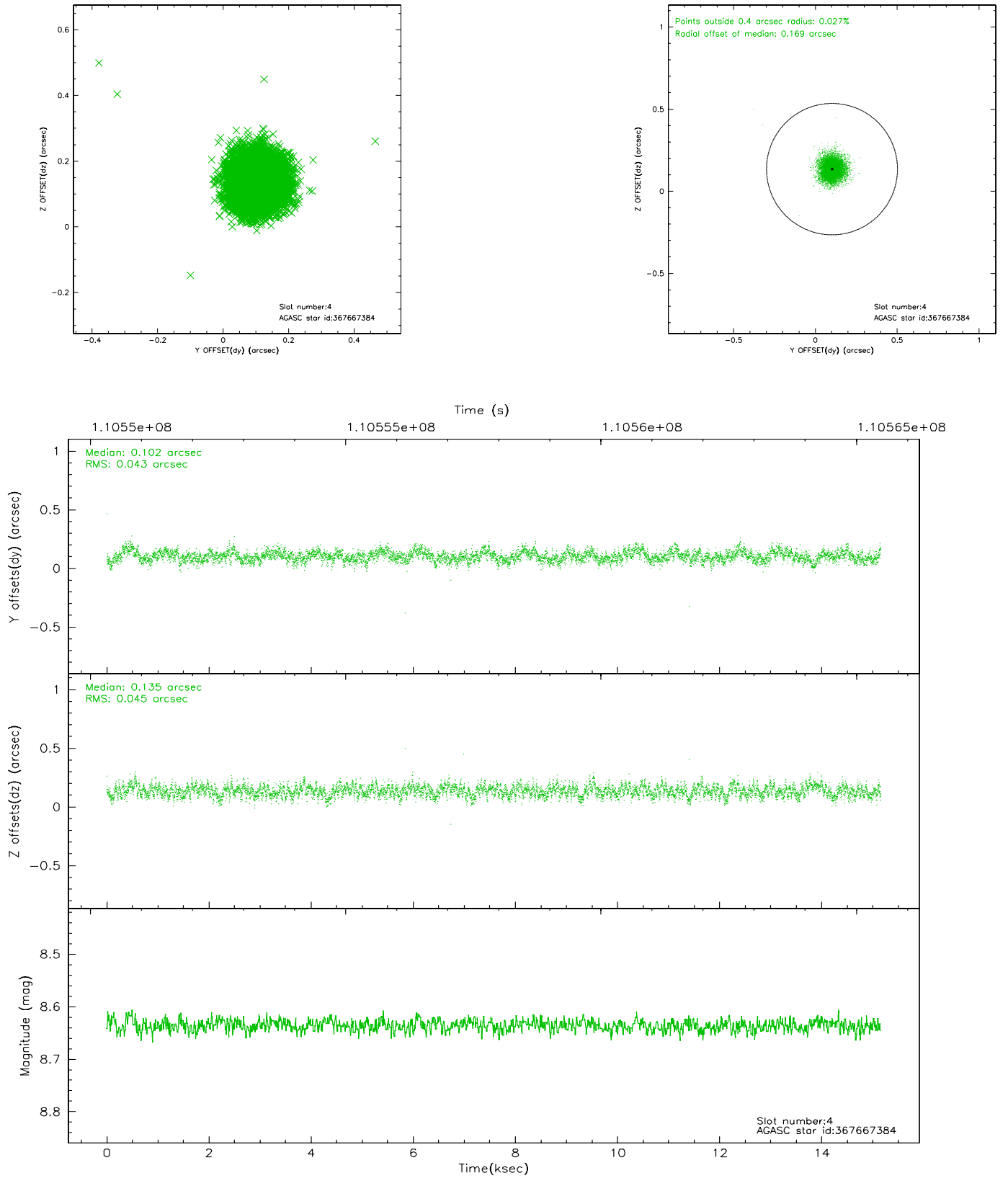
slot	status	id	mag	n_pts	med_dy	med_dz	dr1	dr2	ra	dec	mean_y	mean_z
0	FID	ACIS-S-2	7.11	3696	-0.007	0.026	0.007	0.012	0.000000	0.000000	-754.81	-1728.07
1	FID	ACIS-S-4	7.19	3695	-0.097	-0.004	0.005	0.009	0.000000	0.000000	2158.23	180.09
2	FID	ACIS-S-5	7.24	3695	0.072	-0.013	0.006	0.011	0.000000	0.000000	-1807.20	174.08
3	GUIDE	367657272	8.43	7389	0.120	0.122	0.051	0.085	11.834471	41.298907	-1583.53	-213.41
4	GUIDE	367667384	8.64	7391	0.102	0.135	0.066	0.105	12.077552	41.596878	-764.71	-1167.41
5	GUIDE	367146616	8.85	7387	0.131	-0.098	0.067	0.111	11.418645	41.190163	-1605.51	977.76
6	GUIDE	367671800	9.41	7386	-0.191	-0.081	0.094	0.157	10.554735	41.964935	1778.56	2296.35
7	GUIDE	367671896	9.09	7389	-0.159	-0.079	0.072	0.120	11.763473	41.964845	755.41	-772.89

2.4 Star Slots

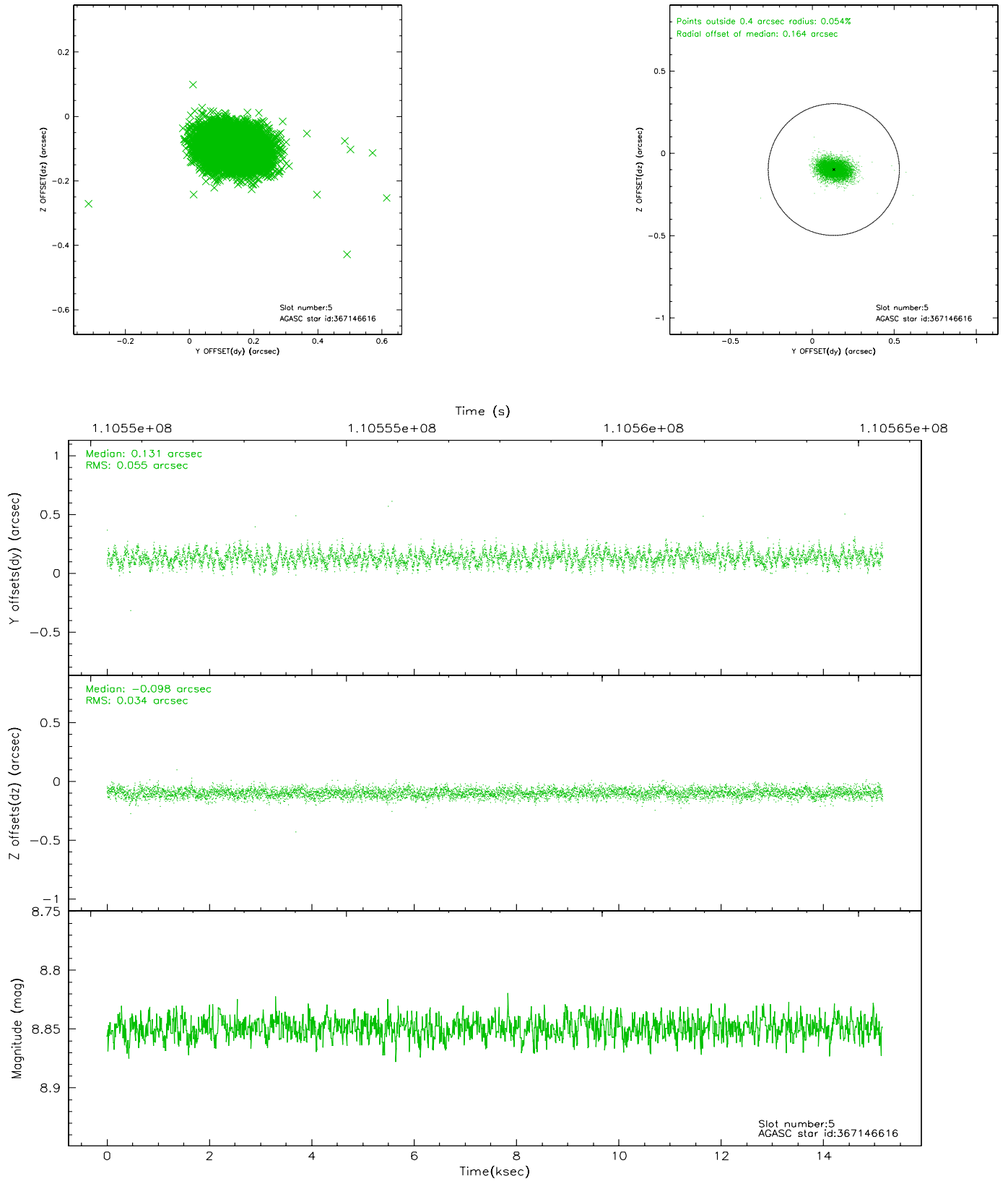
2.4.1 Slot 3



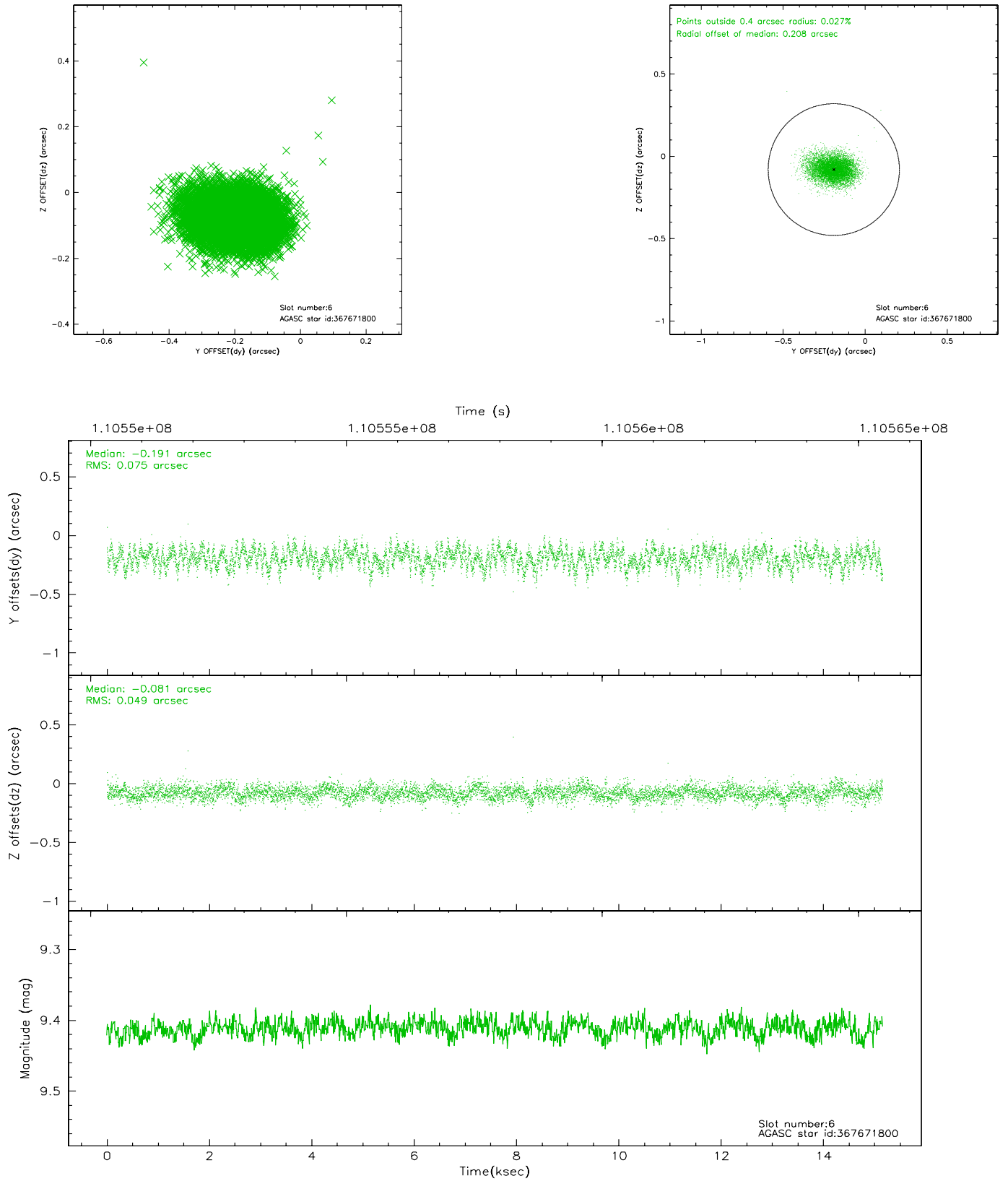
2.4.2 Slot 4



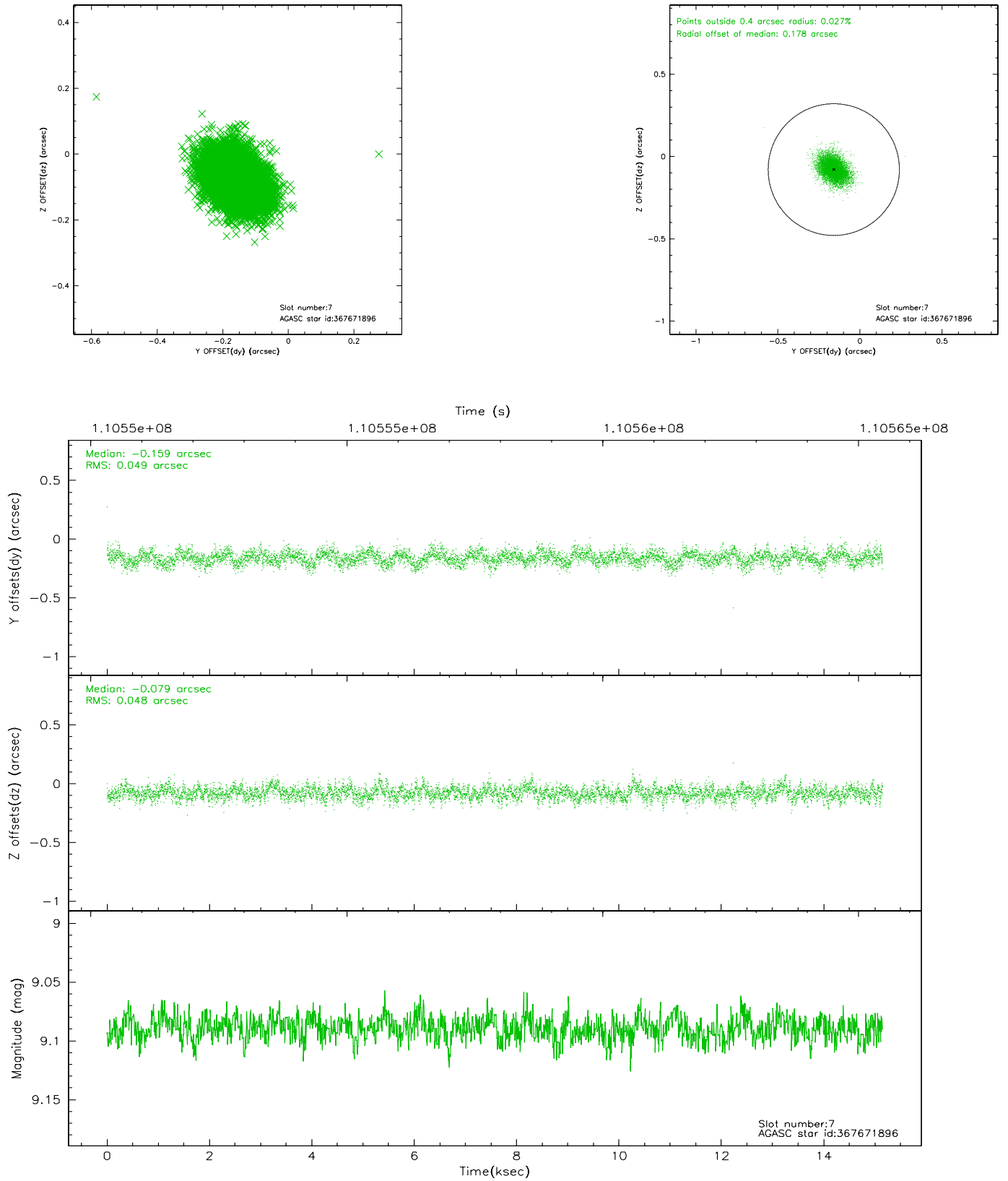
2.4.3 Slot 5



2.4.4 Slot 6

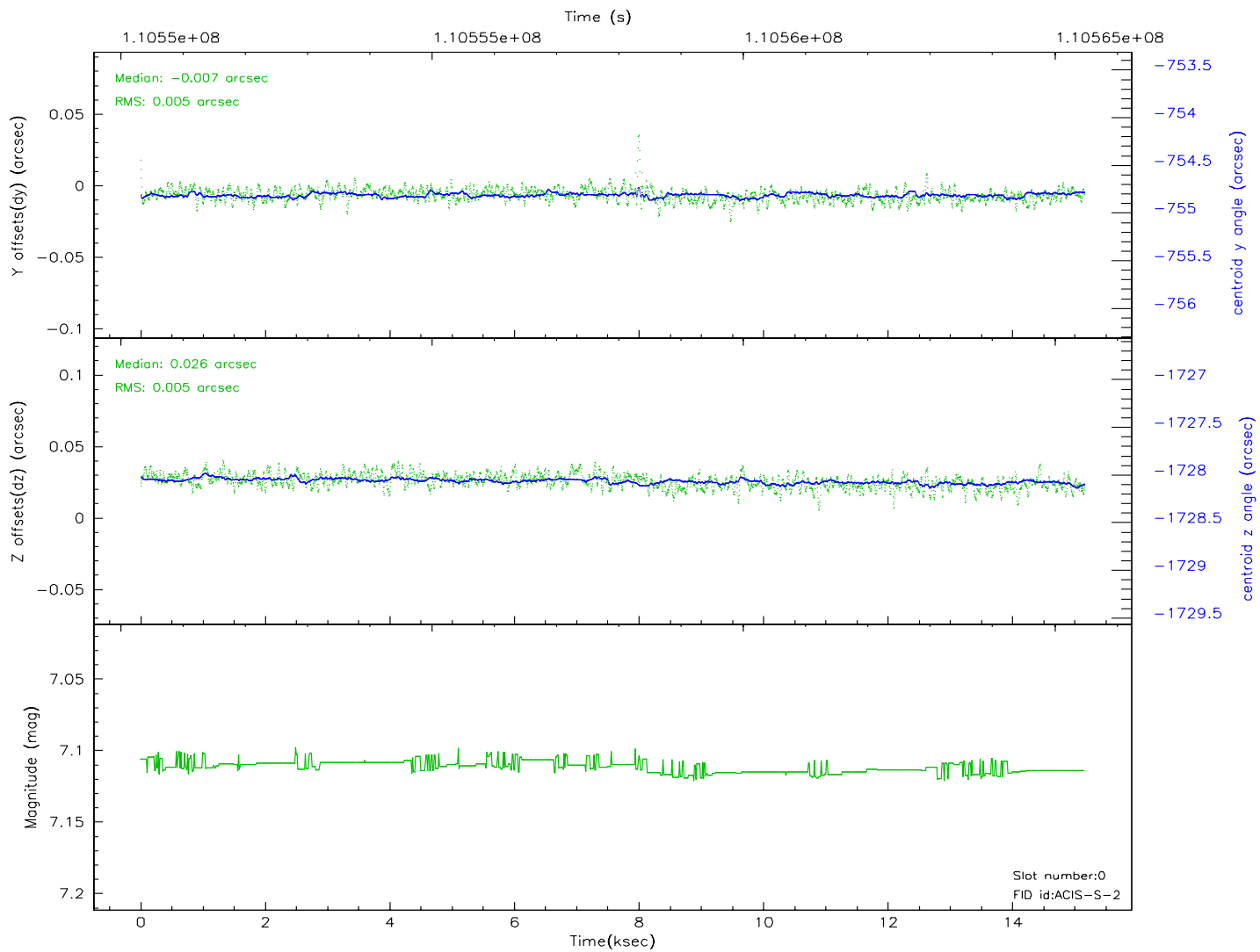
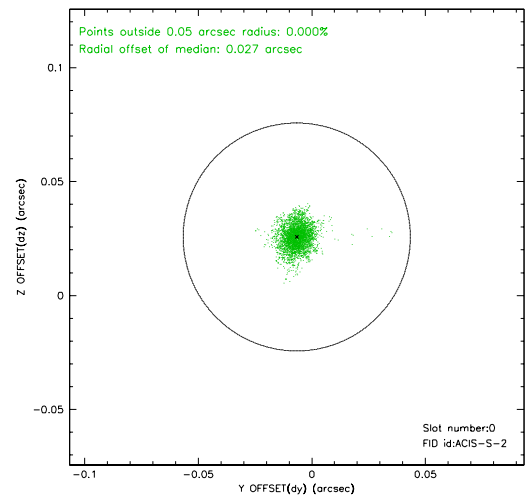
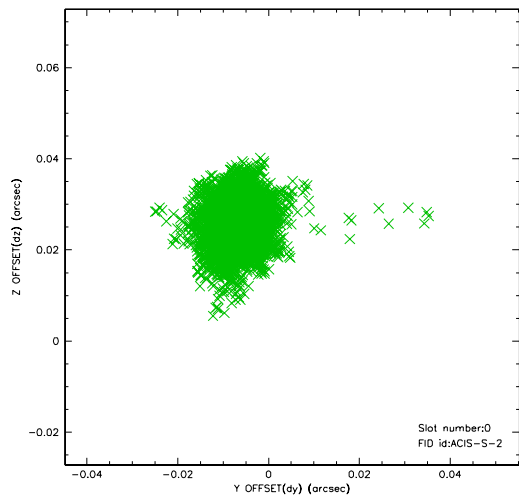


2.4.5 Slot 7

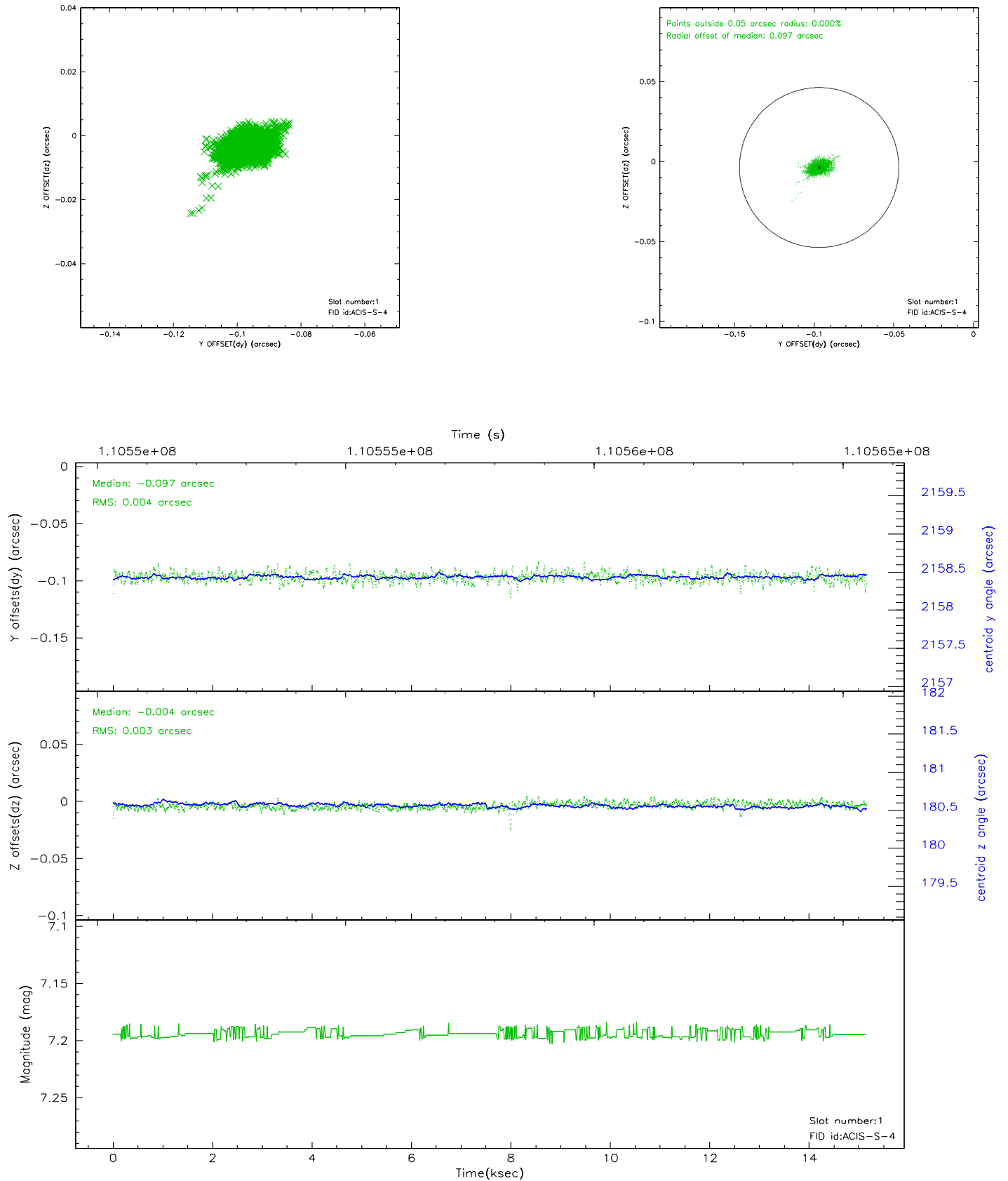


2.5 FID Slots

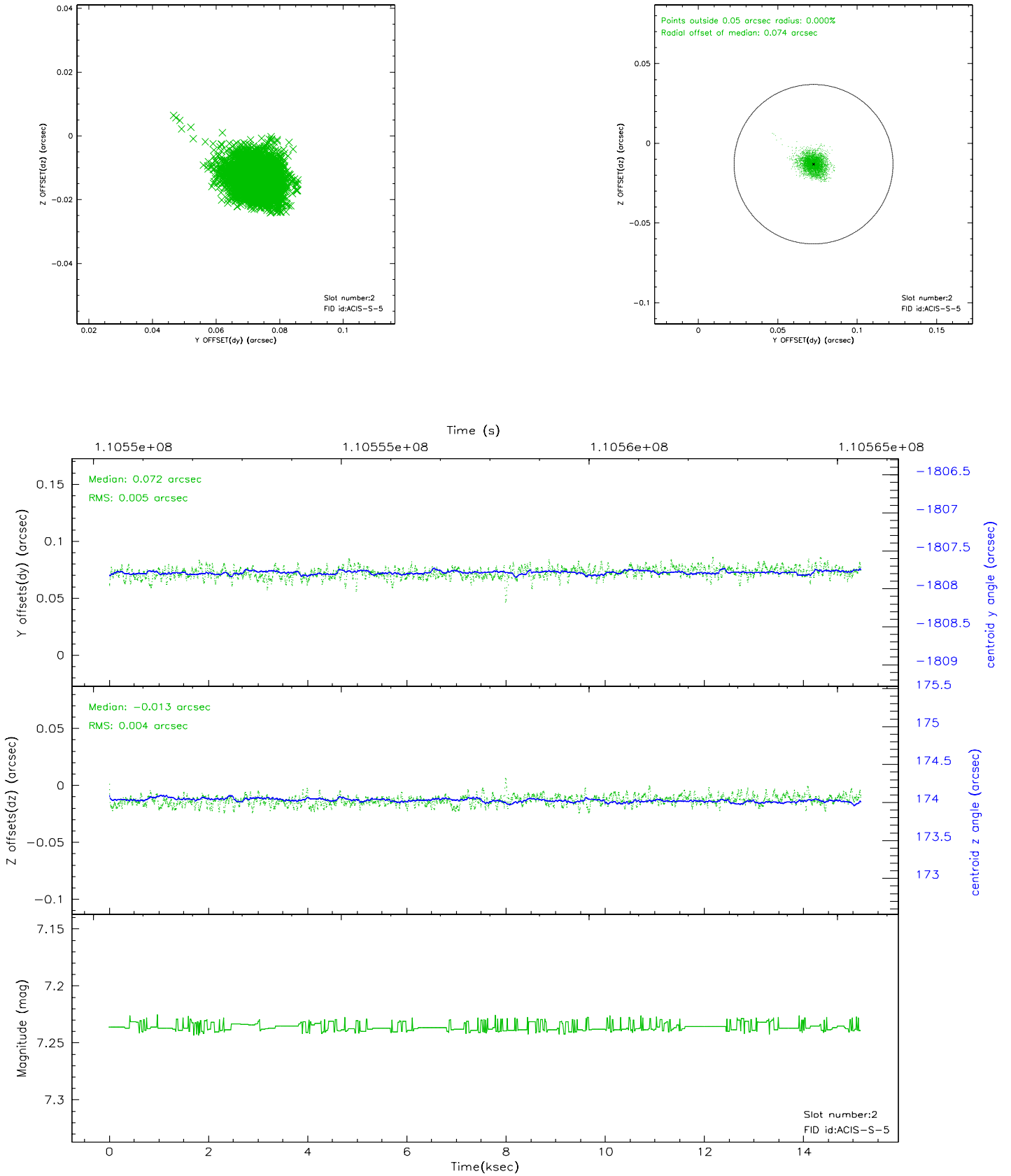
2.5.1 Slot 0



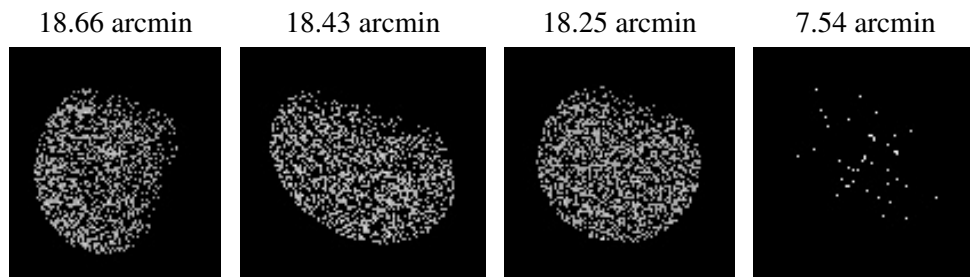
2.5.2 Slot 1



2.5.3 Slot 2



3 Point Sources



A Summary

A.1 Status

V&V Scientist	Jen Lauer
V&V Date (YYYY-MM-DD)	2006.12.11
V&V Edition	1
V&V Disposition and Status	OK
V&V Charge Time	14.713

A.2 Comments

Monitor constraint not met, follows obs2053 by 117 days instead of 120 - 140.