

V&V Reference Report

L2 ASCDS Version : 7.6.10

Observation 2044 - L2 Version 001
Chandra X-Ray Center

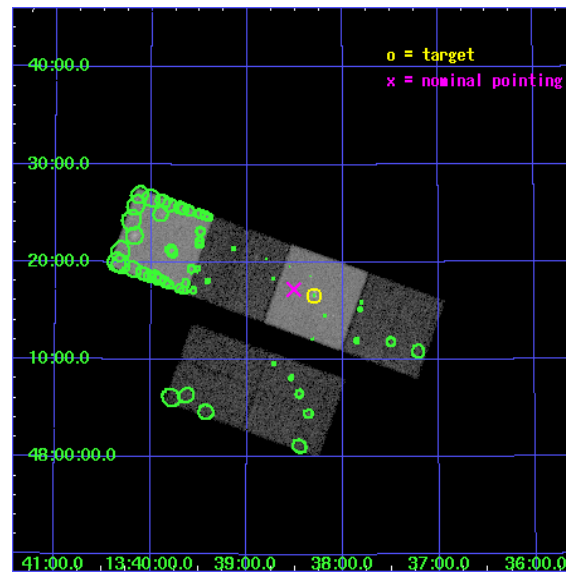
L2 Processing Date : Jan 13 2007

Contents

1	Front	2
2	OBI	3
2.1	OBI	3
2.1.1	Images	3
2.1.2	Bias	3
2.1.3	Parameters	4
2.1.4	Events	4
2.2	Compared Parameters	5
2.3	Aspect	6
2.4	Star Slots	9
2.4.1	Slot 3	9
2.4.2	Slot 4	10
2.4.3	Slot 5	11
2.4.4	Slot 6	12
2.4.5	Slot 7	13
2.5	FID Slots	14
2.5.1	Slot 0	14
2.5.2	Slot 1	15
2.5.3	Slot 2	16
3	Point Sources	17
A	Summary	18
A.1	Status	18
A.2	Comments	18

1 Front

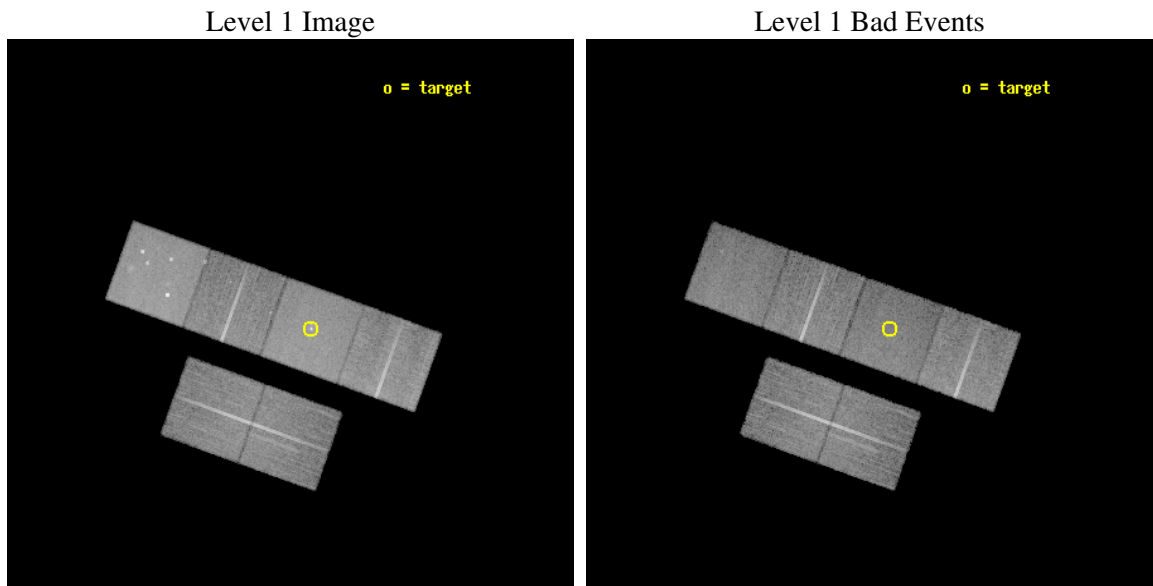
seq_num	600178
obs_id	2044
title	THE EVOLUTION OF GAS EJECTION FROM MERGING GALAXIES
observer	Dr. Andrew Read
object	MARKARIAN 266
dtcycle	0
cycle	P
ra_targ	204.57375
dec_targ	48.276111
ra_nom	204.62758630138
dec_nom	48.287111267282
roll_nom	19.788040531285
revision	2
ontime	19945.600018576
livetime	19693.036821342
ontime2	19945.600018576
ontime3	19945.600018576
ontime5	19945.600018576
ontime6	19942.359058321
ontime7	19945.600018576
ontime8	19945.600018576
l2events	210095



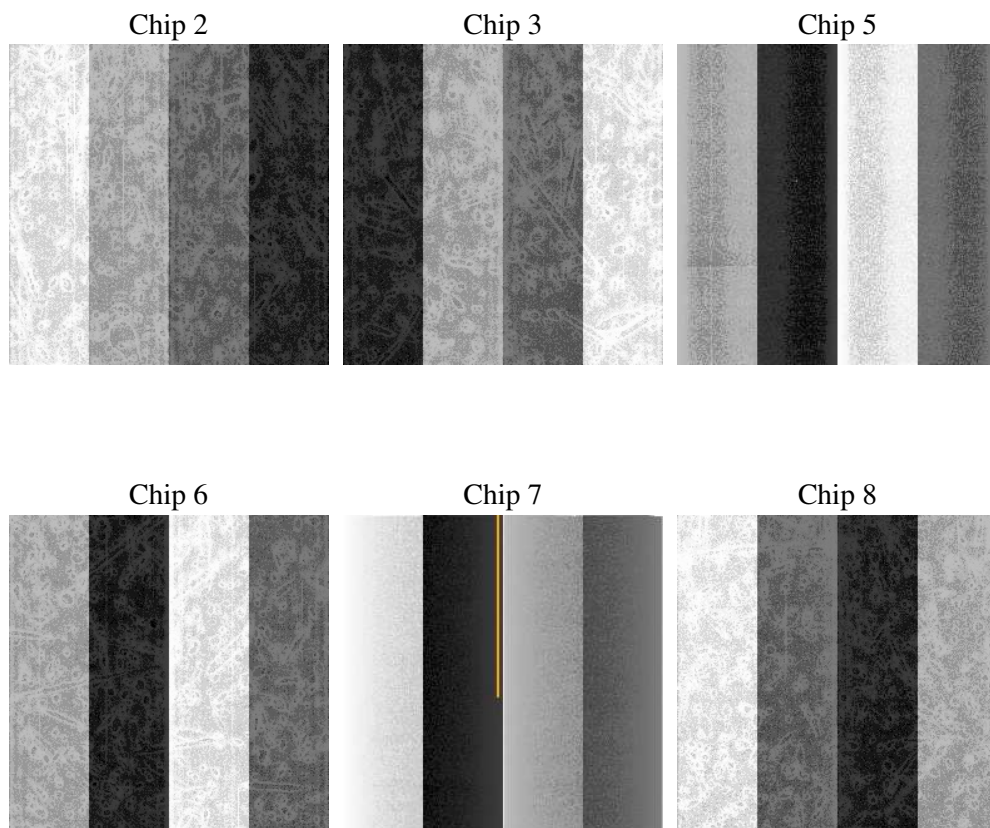
2 OBI

2.1 OBI

2.1.1 Images



2.1.2 Bias



2.1.3 Parameters

obi_num	0
ascdsver	7.6.10
caldsver	3.3.0
date	2007-01-13T14:54:13
revision	2

sched_exp_time	20000.000000
ontime	19945.600018576
ontime2	19945.600018576
ontime3	19945.600018576
ontime5	19945.600018576
ontime6	19942.359058321
ontime7	19945.600018576
ontime8	19945.600018576
l1events	902353

2.1.4 Events

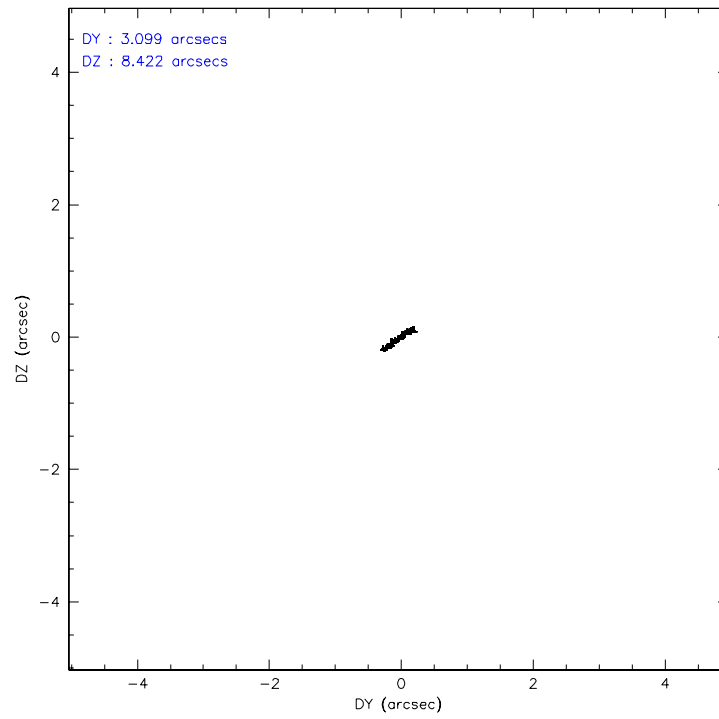
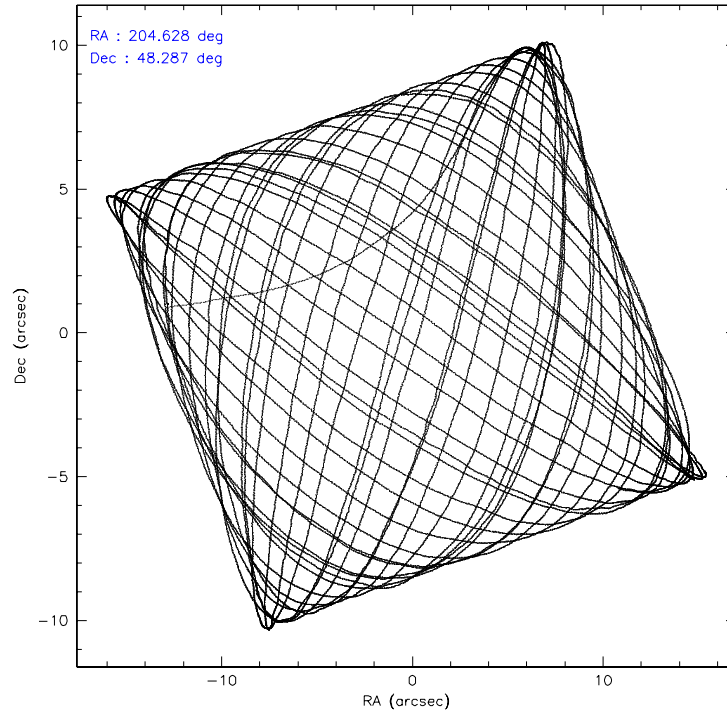
	ccd 2	ccd 3	ccd 5	ccd 6	ccd 7	ccd 8
level 1 events	130423	123739	189591	130094	170483	158023
rejected events	115819	109409	98126	114640	95363	126567
rejected %	88%	88%	51%	88%	55%	80%

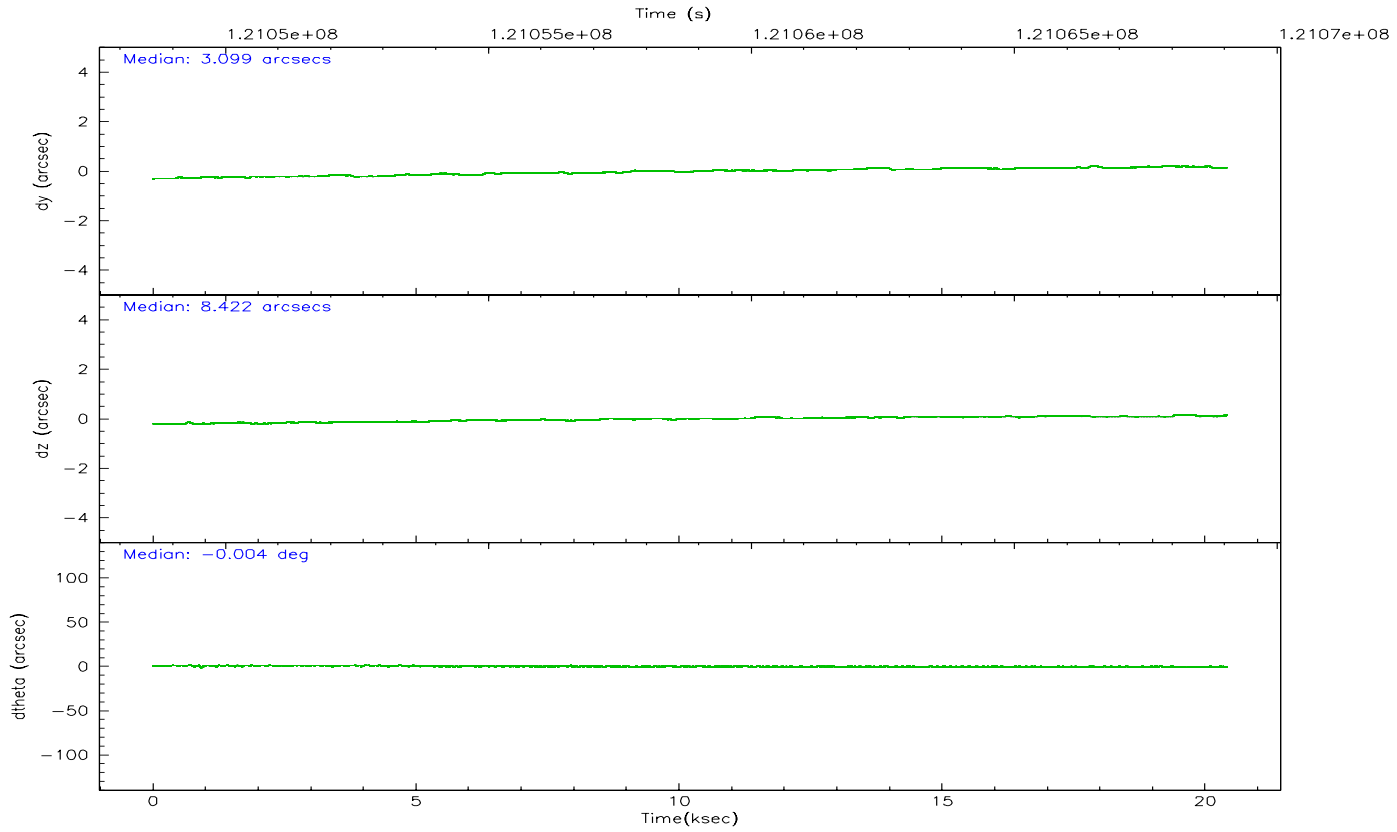
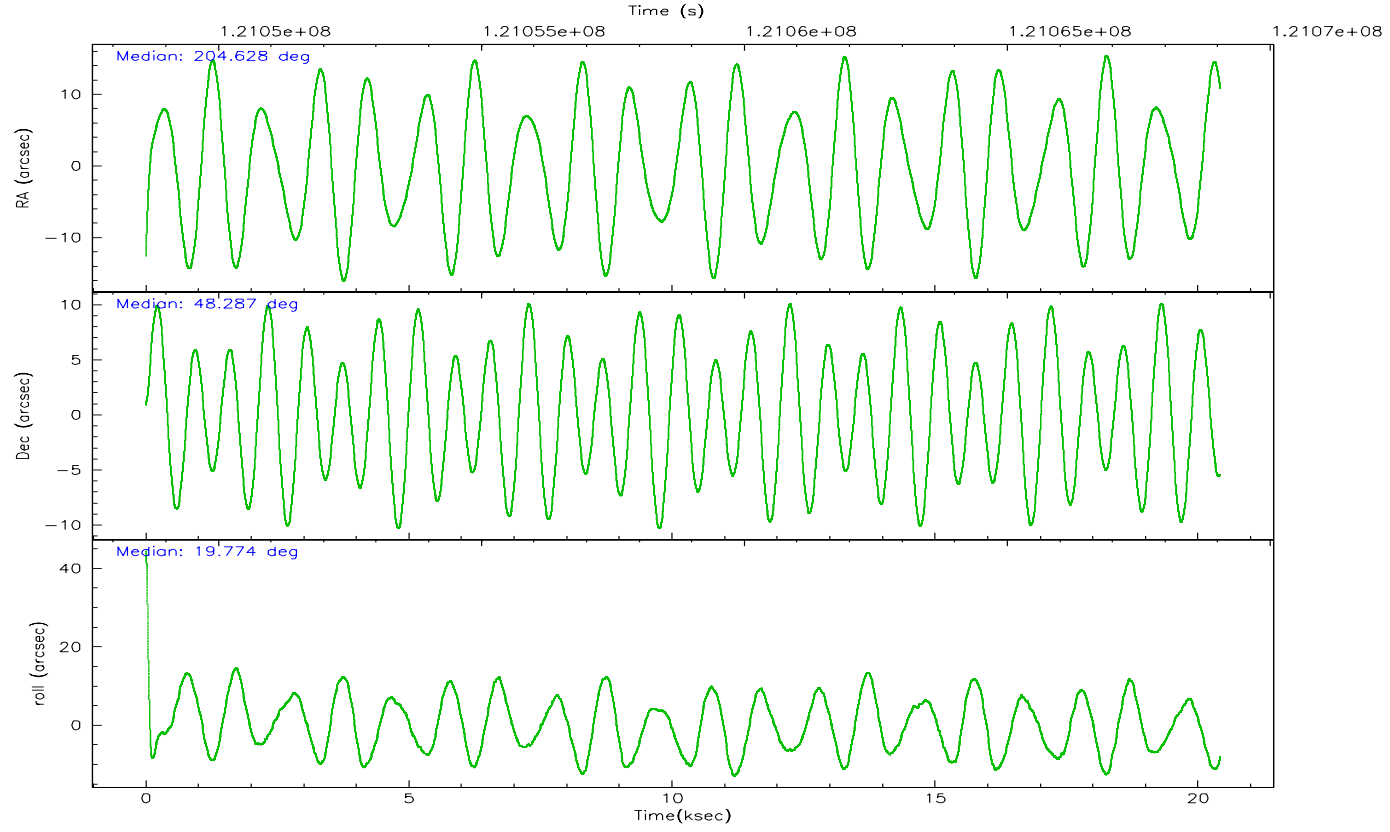
	ccd 2	ccd 3	ccd 5	ccd 6	ccd 7	ccd 8
grade 0 events	6135	6113	13121	6335	8039	10051
	4%	4%	6%	4%	4%	6%
grade 1 events	47	50	228	65	149	95
	0%	0%	0%	0%	0%	0%
grade 2 events	3205	2900	25681	3160	14716	7027
	2%	2%	13%	2%	8%	4%
grade 3 events	1370	1346	4012	1548	6807	3220
	1%	1%	2%	1%	3%	2%
grade 4 events	1343	1419	3728	1504	6768	2978
	1%	1%	1%	1%	3%	1%
grade 5 events	4321	4947	13522	5400	16026	6974
	3%	3%	7%	4%	9%	4%
grade 6 events	2554	2555	44969	2912	38818	8185
	1%	2%	23%	2%	22%	5%
grade 7 events	111448	104409	84330	109170	79160	119493
	85%	84%	44%	83%	46%	75%

2.2 Compared Parameters

Parameter	Planned	Actual	Parameter	Planned	Actual
Instrument	ACIS	ACIS	Obspar format version number	6	6
Detector	ACIS-235678	ACIS-235678	Obspar file type	PREDICTED	ACTUAL
Grating	NONE	NONE	Obspar update status	NONE	UPDATED
Data mode	FAINT	FAINT	Number of optional ACIS chips dropped	0	0
Observation mode	POINTING	POINTING	On-chip summing requested	N	N
Pointing RA	204.601479	204.6275863013821	Subarray requested	NONE	NONE
Pointing Dec	48.266065	48.28711126728241	Alternating exposures requested	N	N
Pointing Roll	19.650869	19.78804053128456	Primary exposure time	0.000000	3.2
SIM focus pos (mm)	-0.684267	-0.6828225247311905			
SIM defocus (mm)	0	0.001444936568705701			
SIM translation stage pos (mm)	-190.132523	-190.1400660498719			
SIM translation stage offset (mm)	0	0.00754346686406393			
Observation start time	121049044.184000	121047970.72952			
Observation start date	2001-11-02T00:43:00	2001-11-02T00:26:10			
Observation end time	121069044.184000	121069669.98038			
Observation end date	2001-11-02T06:16:20	2001-11-02T06:27:49			
Read mode	TIMED	TIMED			

2.3 Aspect



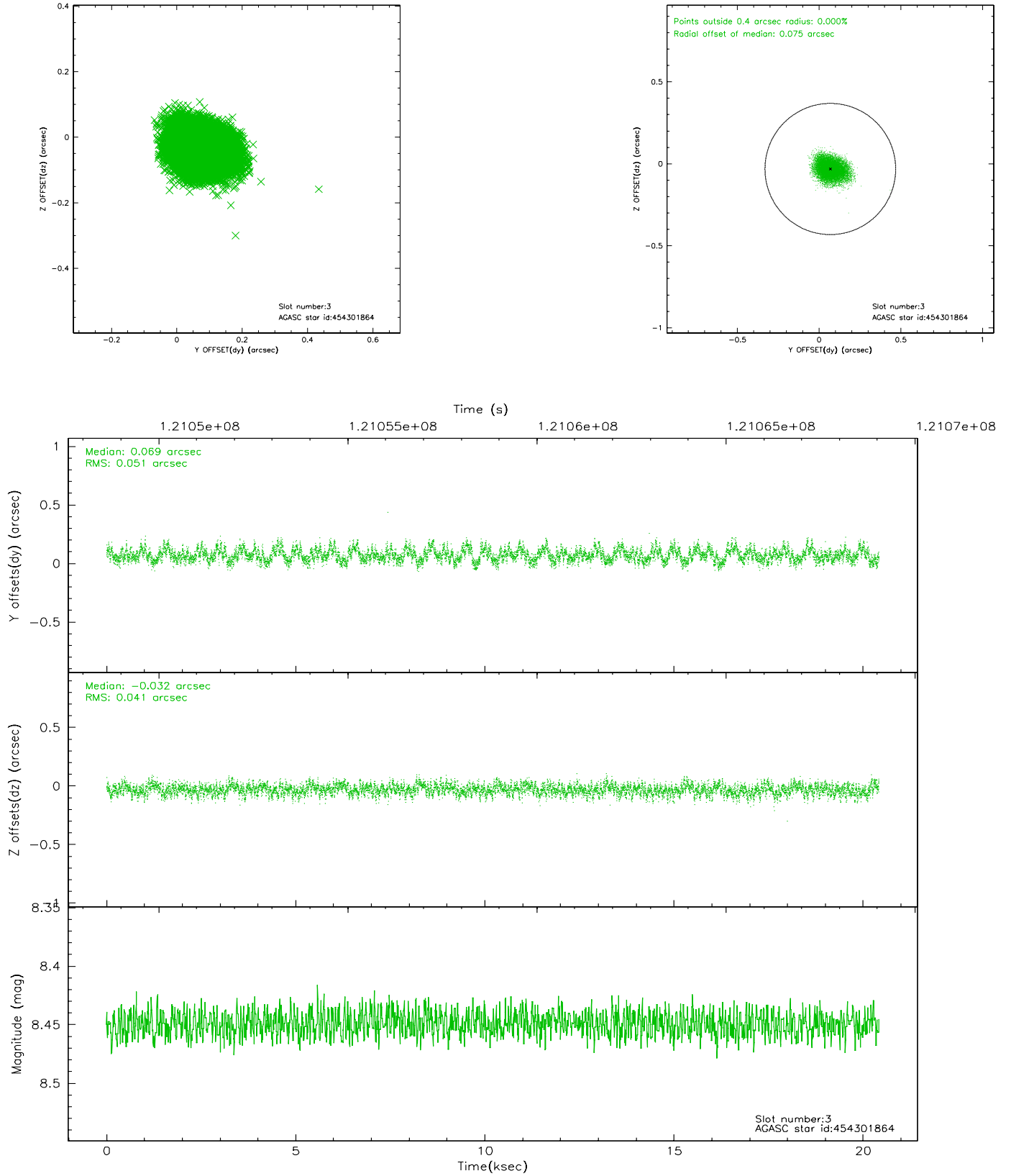


Slot Statistics

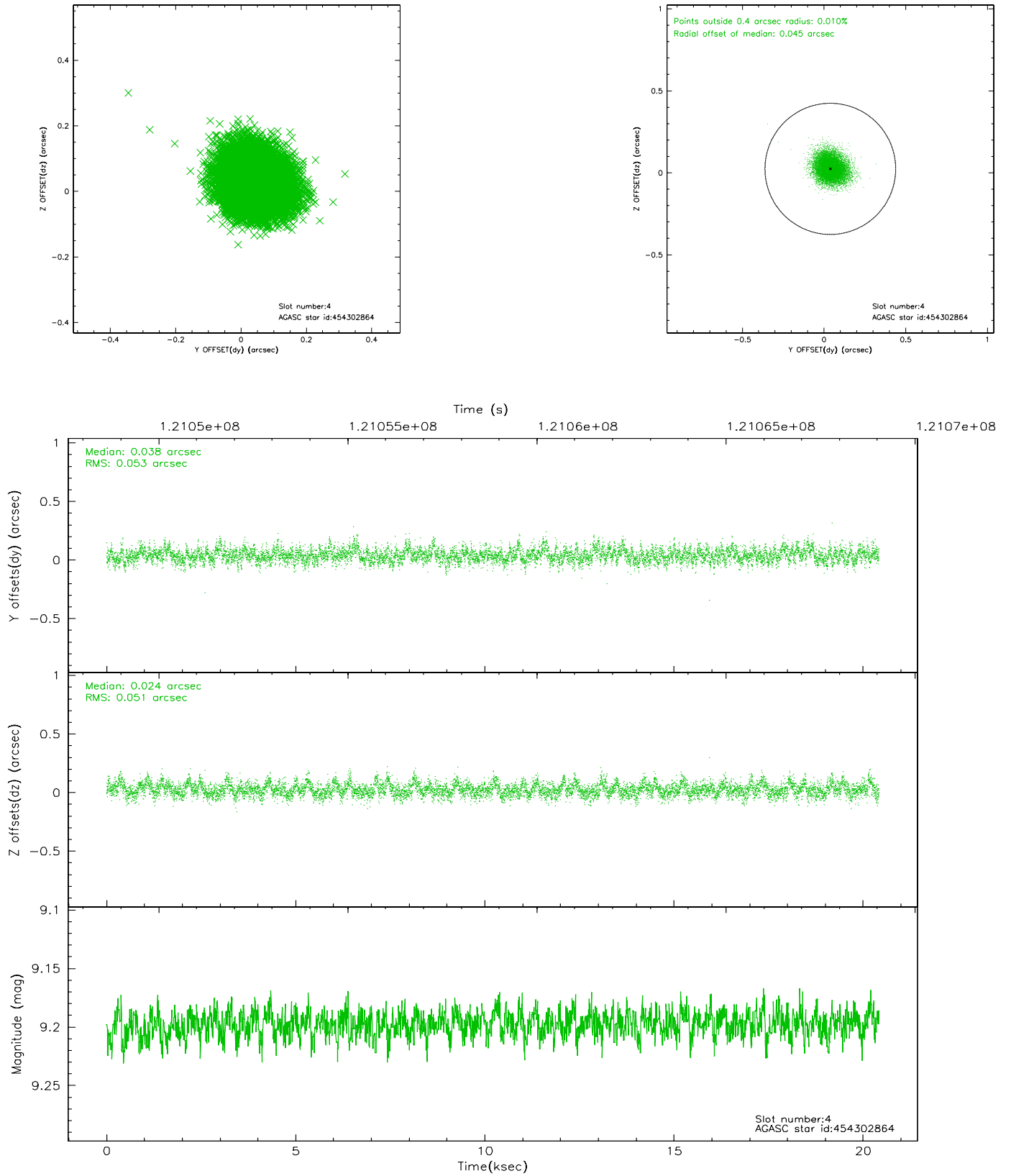
slot	status	id	mag	n_pts	med_dy	med_dz	dr1	dr2	ra	dec	mean_y	mean_z
0	FID	ACIS-S-2	7.11	4978	0.009	0.020	0.007	0.012	0.000000	0.000000	-755.72	-1729.59
1	FID	ACIS-S-4	7.20	4978	-0.082	-0.010	0.008	0.014	0.000000	0.000000	2157.39	178.66
2	FID	ACIS-S-5	7.24	4979	0.041	-0.001	0.007	0.013	0.000000	0.000000	-1808.29	172.57
3	GUIDE	454301864	8.45	9959	0.069	-0.032	0.070	0.112	204.450199	48.049212	-605.31	-612.48
4	GUIDE	454302864	9.20	9956	0.038	0.024	0.079	0.128	204.946325	48.301723	821.25	-154.82
5	GUIDE	454302448	9.08	9955	-0.194	0.321	0.060	0.098	204.463411	48.138135	-467.91	-321.70
6	GUIDE	454302000	9.47	9955	-0.046	0.010	0.078	0.128	205.226411	48.190021	1322.31	-756.04
7	GUIDE	454300616	9.50	9954	0.140	-0.325	0.124	0.196	203.773609	48.719893	-1299.39	2209.46

2.4 Star Slots

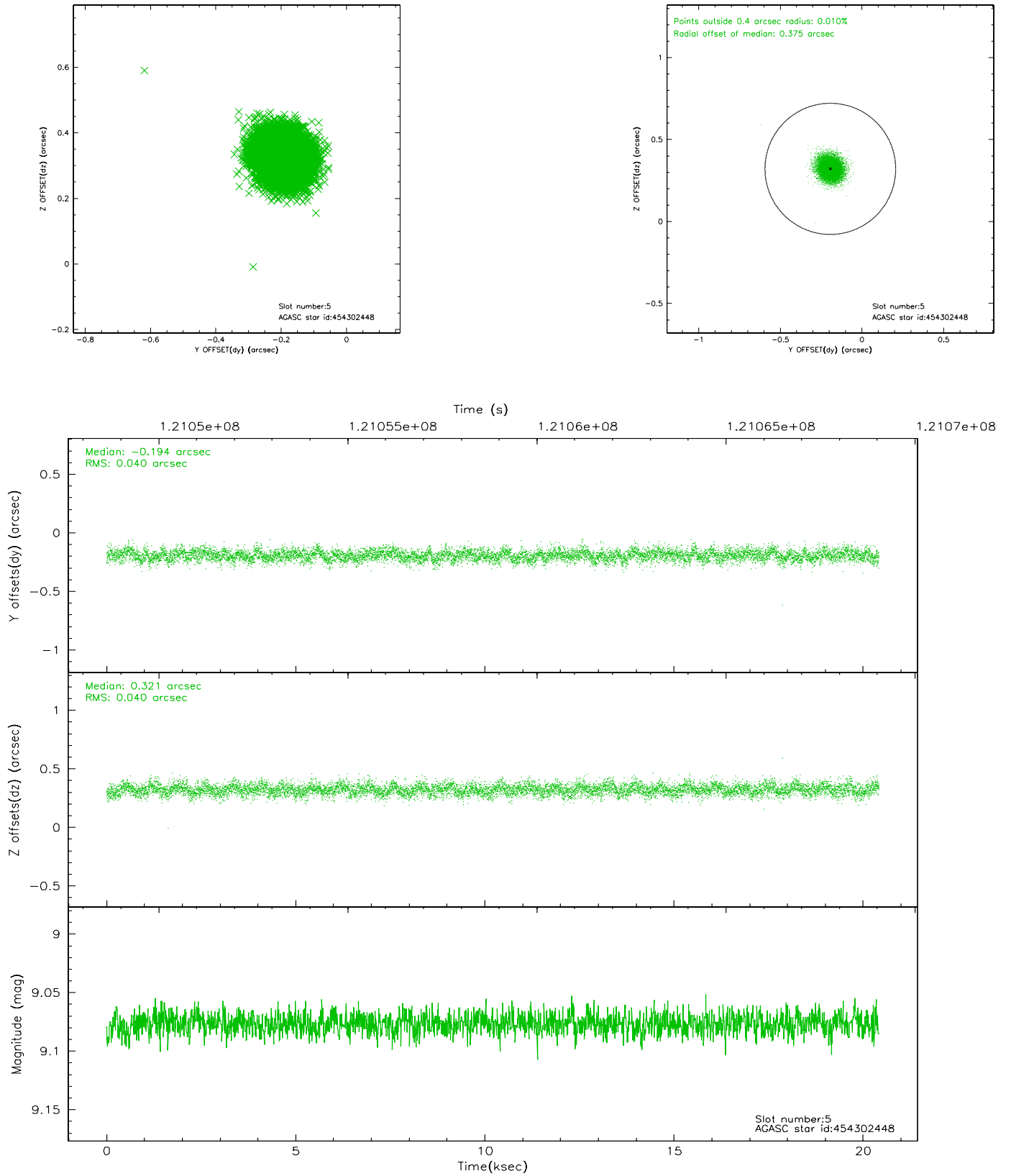
2.4.1 Slot 3



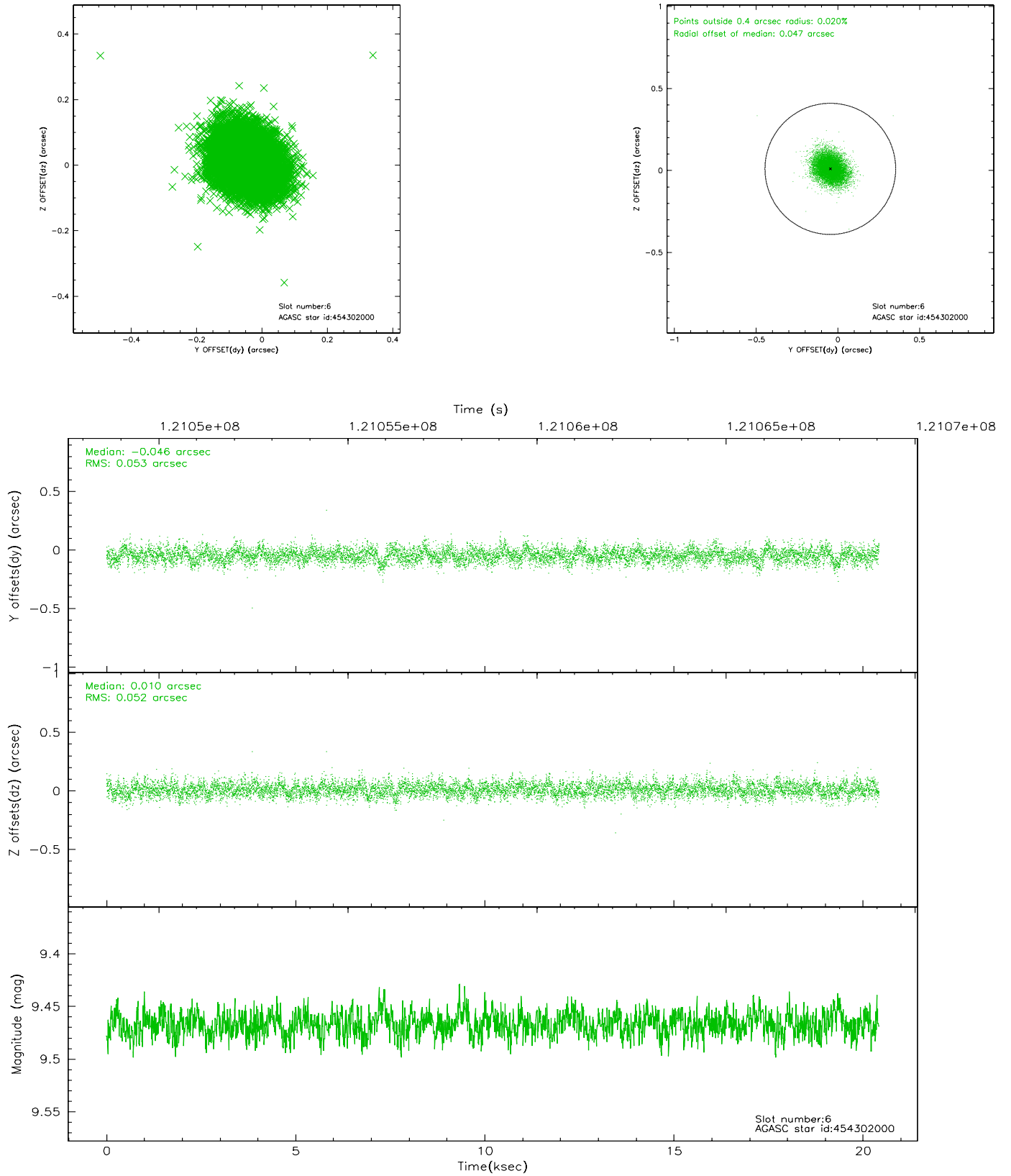
2.4.2 Slot 4



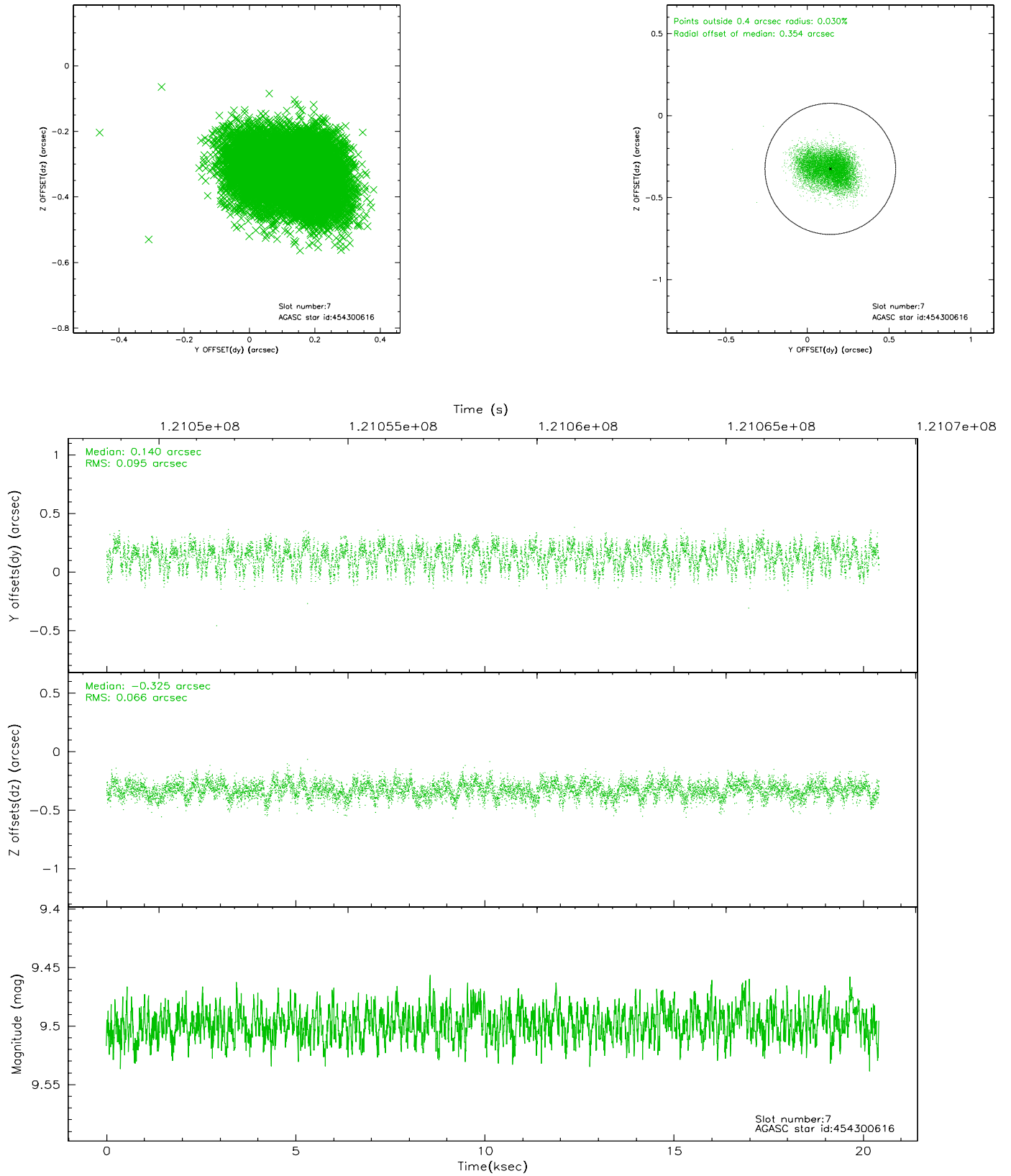
2.4.3 Slot 5



2.4.4 Slot 6

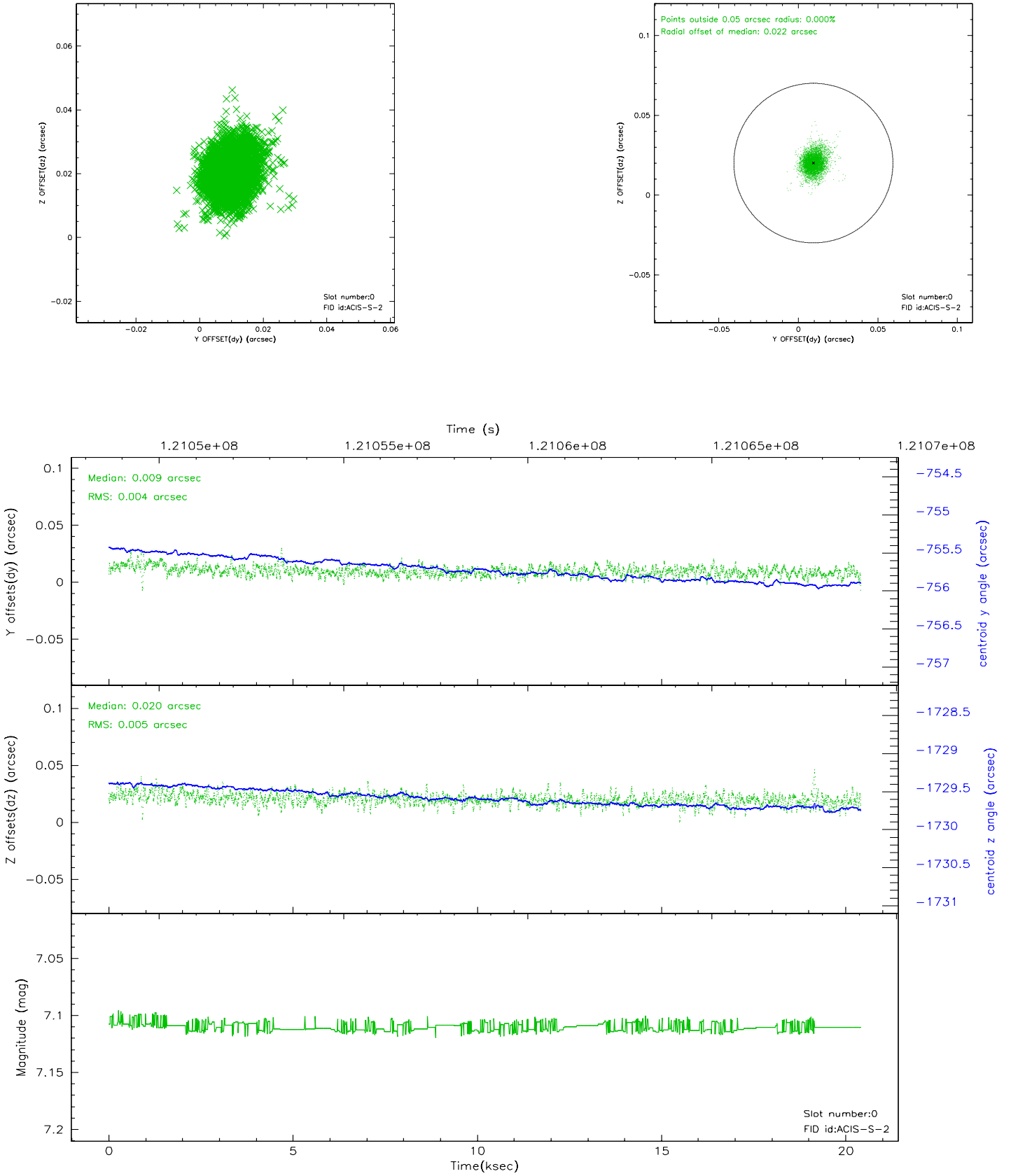


2.4.5 Slot 7

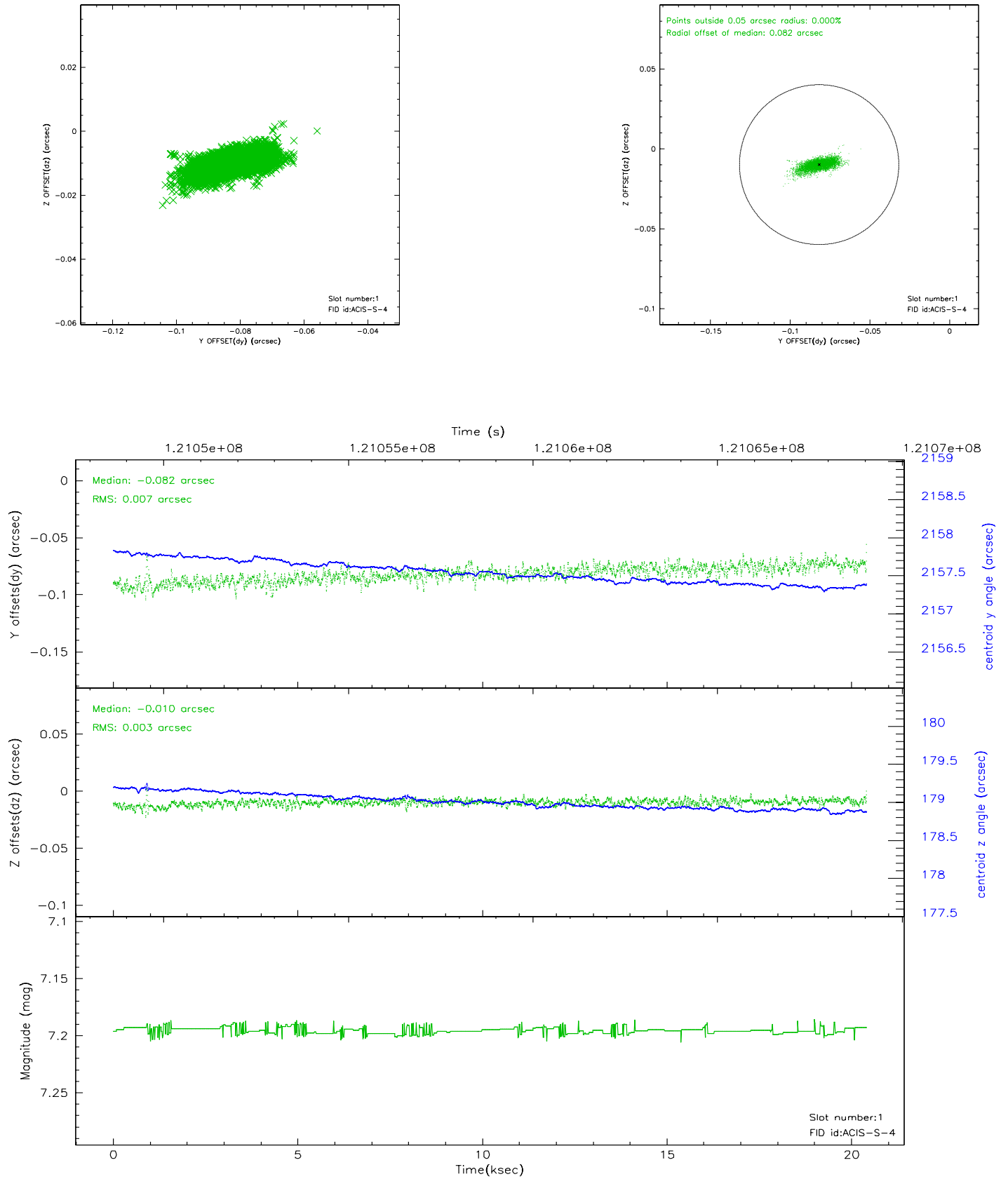


2.5 FID Slots

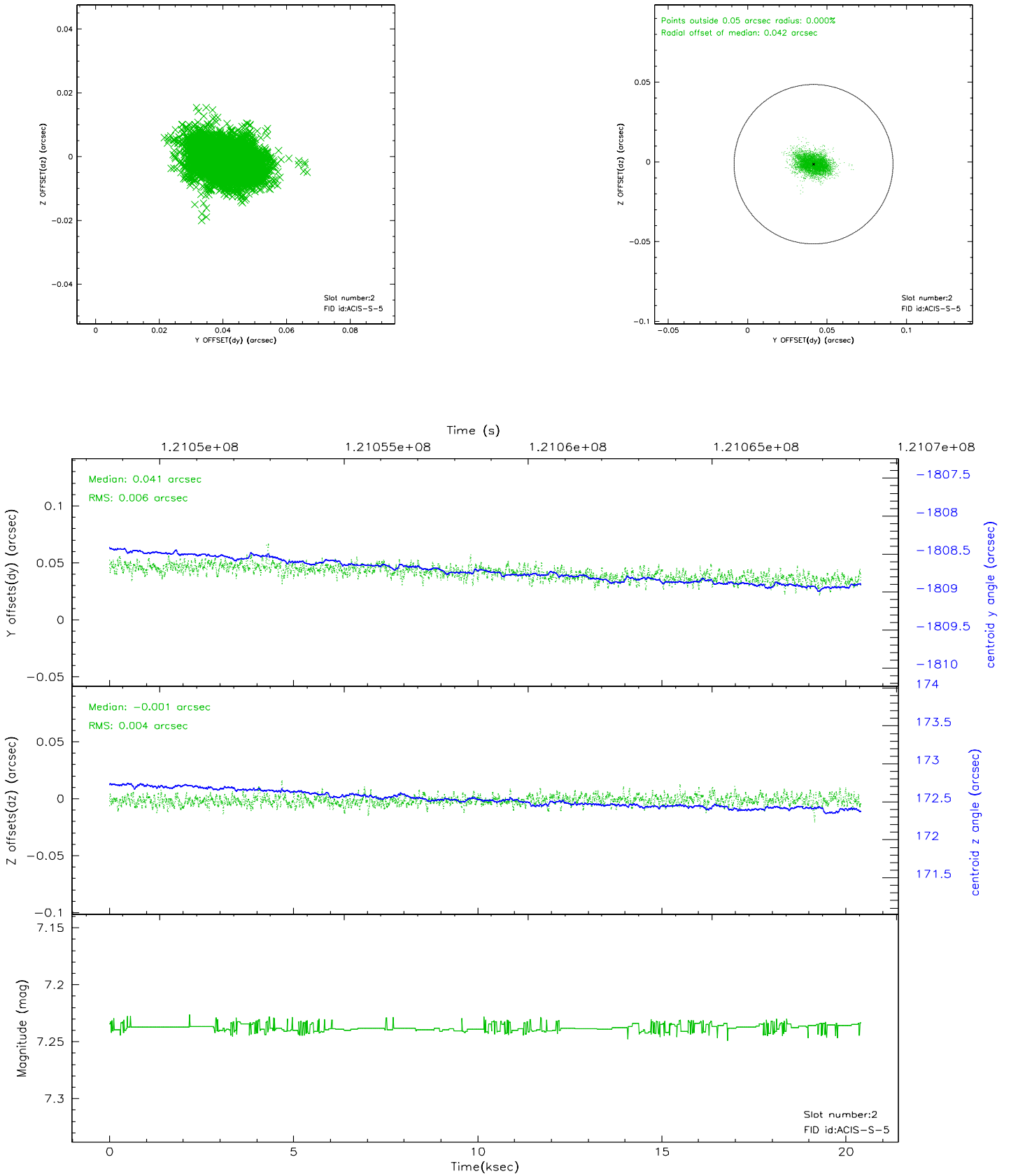
2.5.1 Slot 0



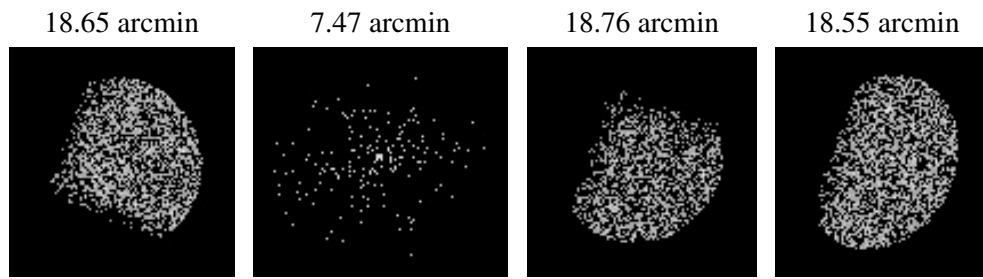
2.5.2 Slot 1



2.5.3 Slot 2



3 Point Sources



A Summary

A.1 Status

V&V Scientist	Beth Sundheim
V&V Date (YYYY-MM-DD)	2007.01.16
V&V Edition	1
V&V Disposition and Status	OK
V&V Charge Time	19.949

A.2 Comments