

V&V Reference Report

L2 ASCDS Version : 8.1.1

Observation 1504 - L2 Version 5

Chandra X-Ray Center

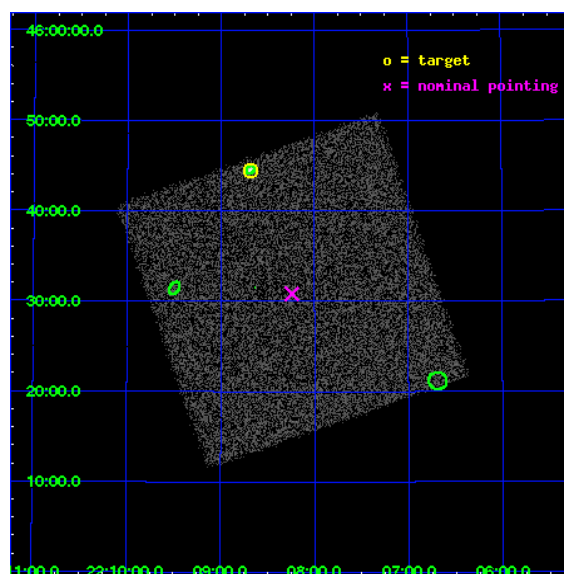
L2 Processing Date : Nov 25 2009

Contents

1	Front	2
2	OBI	3
2.1	OBI	3
2.1.1	Images	3
2.1.2	Parameters	4
2.1.3	Events	4
2.2	Compared Parameters	5
2.3	Aspect	6
2.4	Star Slots	9
2.4.1	Slot 3	9
2.4.2	Slot 4	10
2.4.3	Slot 5	11
2.5	FID Slots	12
2.5.1	Slot 0	12
2.5.2	Slot 1	13
2.5.3	Slot 2	14
3	Point Sources	15
A	Summary	16
A.1	Status	16
A.2	Comments	16

1 Front

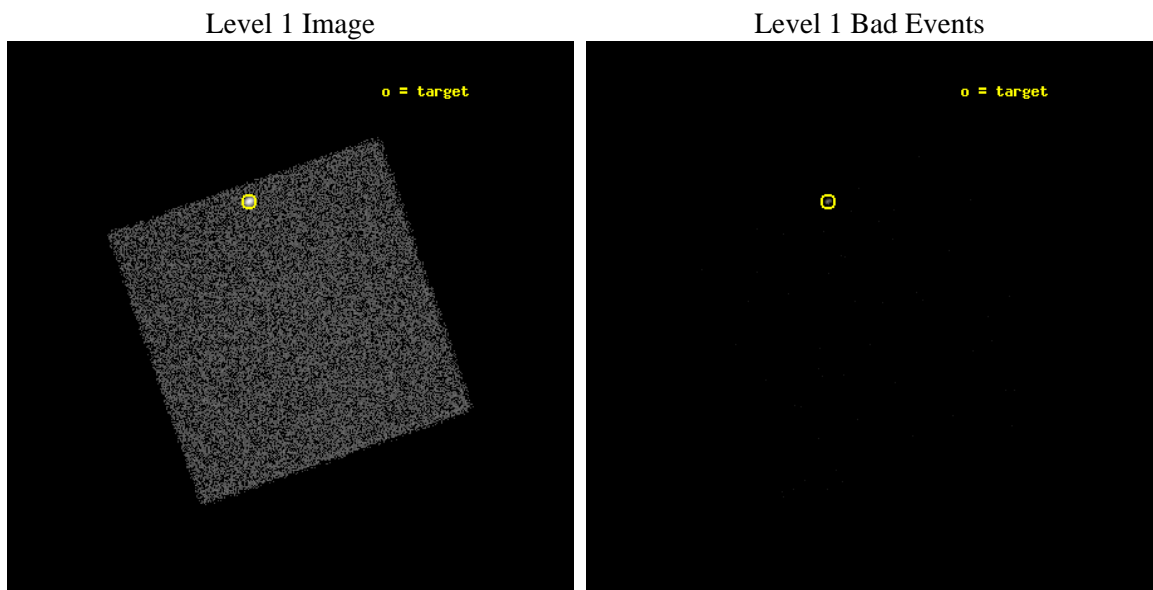
seq_num	280454	Sequence number
obs_id	1504	Observation id
title	 	Proposal title
observer	Dr. CXC Calibration	Principal investigator
object	ArLac	Source name
ra_targ	332.1701	Observer's specified target RA
dec_targ	45.7423	Observer's specified target Dec
ra_nom	332.06020558927	Nominal RA
dec_nom	45.514043564543	Nominal Dec
roll_nom	295.73257342626	Nominal Roll
revision	5	Processing version of data
ontime	1212.8312939033	[s]
livetime	1205.1630622329	Ontime multiplied by DTCOR
l2events	38415	Number of level 2 events



2 OBI

2.1 OBI

2.1.1 Images



2.1.2 Parameters

obi_num	0	Obi number	sched_exp_time	1000.000000	Scheduled observation exposure time
ascdsver	8.1.1	Processing system revision	ontime	1212.8312939033	[s]
caldbver	4.1.4	 	l1events	59999	Number of level 1 events
date	2009-11-25T12:57:20	Date and time of file creation			
revision	4	Processing version of data			

2.1.3 Events

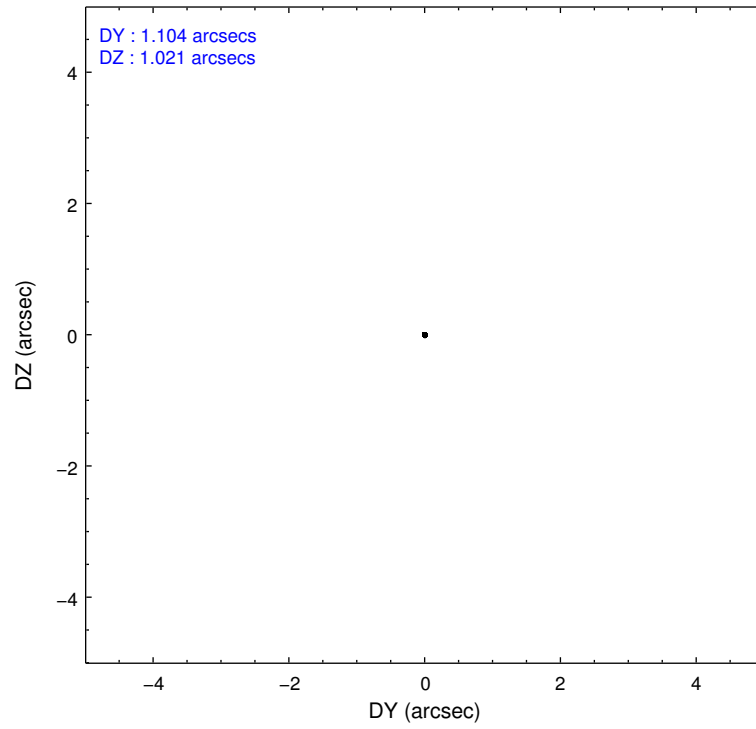
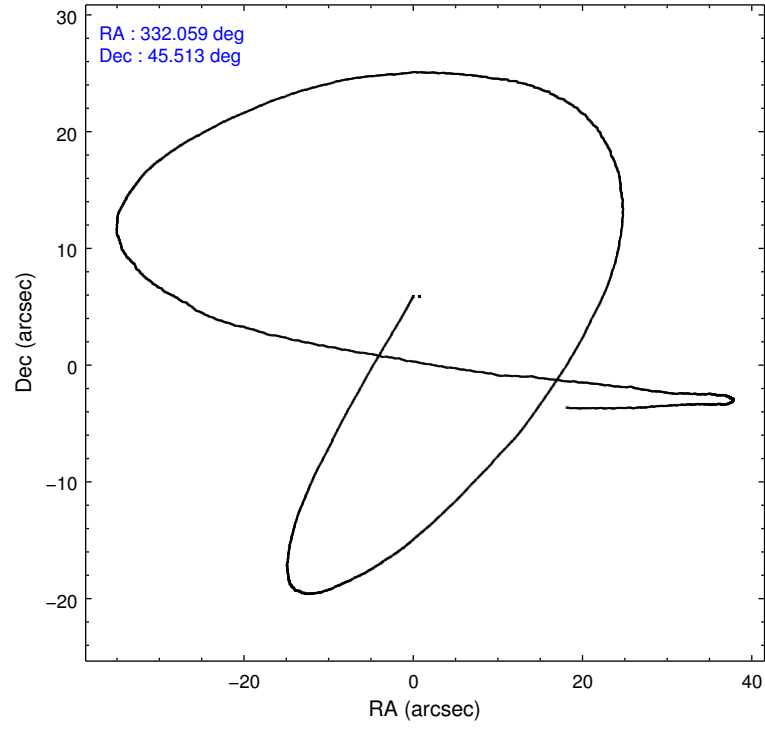
Level 1 Events

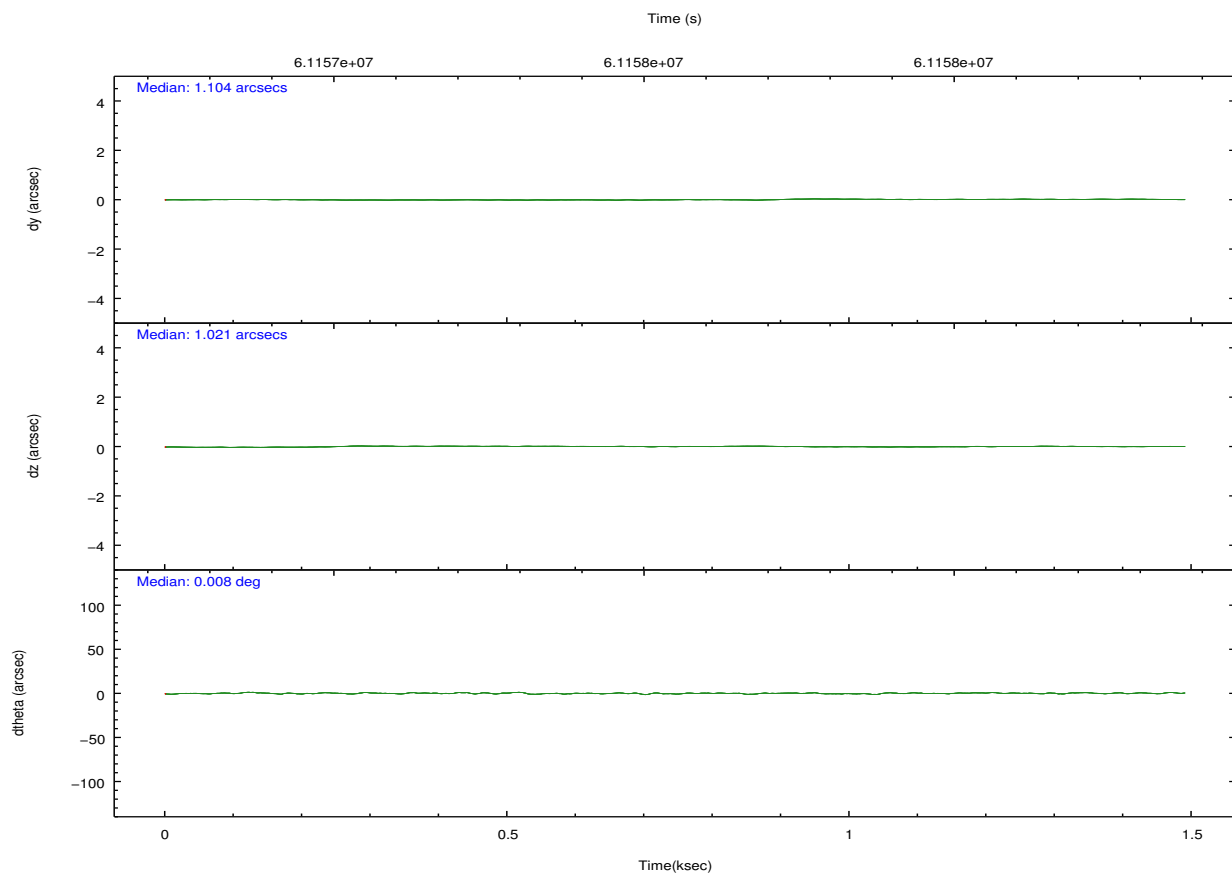
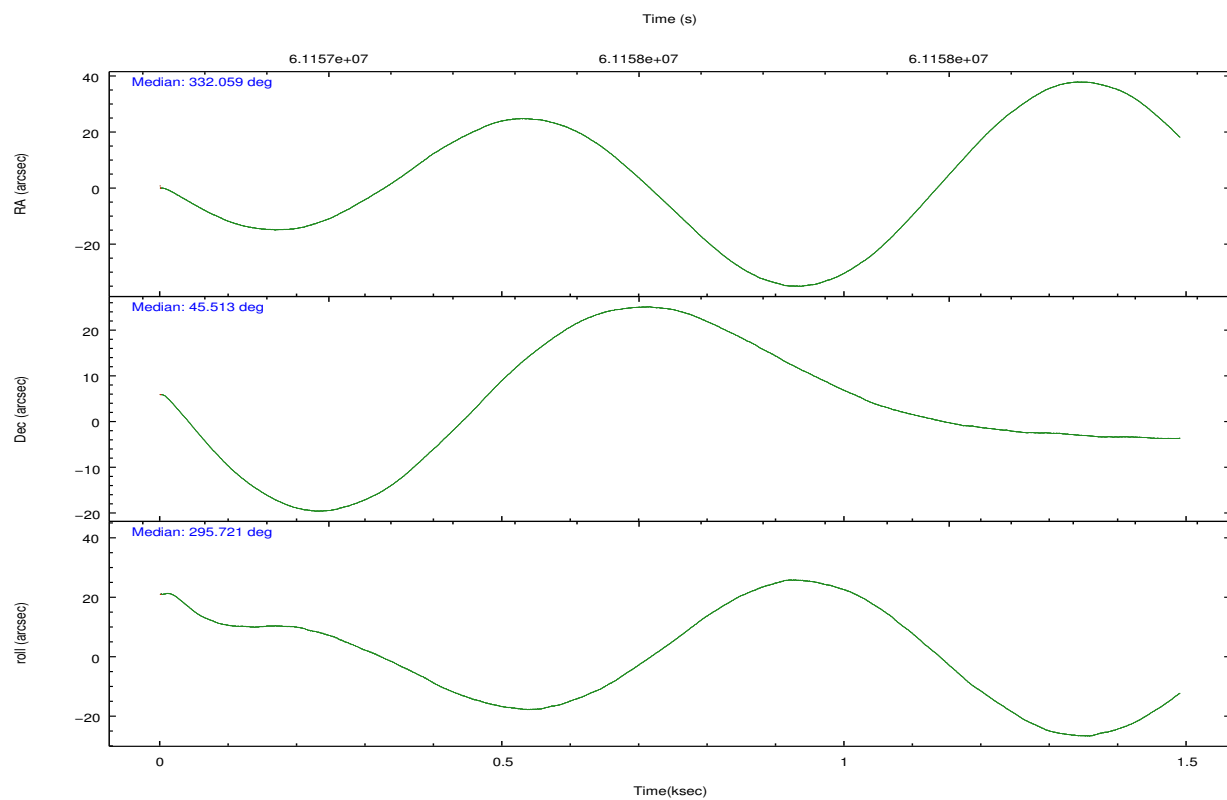
	segment 0
level 1 events	59999
rejected events	2594
rejected %	4%

2.2 Compared Parameters

Parameter	Planned	Actual	Parameter	Planned	Actual
Instrument	HRC	HRC	Obspar format version number	6	6
Detector	HRC-I	HRC-I	Obspar file type	PREDICTED	ACTUAL
Grating	NONE	NONE	Obspar update status	NONE	UPDATED
Data mode	OBSERVING	OBSERVING			
Observation mode	POINTING	POINTING			
Pointing RA	332.027029	332.0602055892745			
Pointing Dec	45.530290	45.51404356454259			
Pointing Roll	295.851569	295.7325734262554			
SIM focus pos (mm)	-1.040293	-1.038866356238299			
SIM defocus (mm)	0	0.001426264420575141			
SIM translation stage pos (mm)	126.985494	126.9854943052878			
SIM translation stage offset (mm)	0	-5.413686238853188e-06			
Observation start time	61157296.184000	61156581.878513			
Observation start date	1999-12-09T20:07:12	1999-12-09T19:56:21			
Observation end time	61158296.184000	61159204.341108			
Observation end date	1999-12-09T20:23:52	1999-12-09T20:40:04			

2.3 Aspect



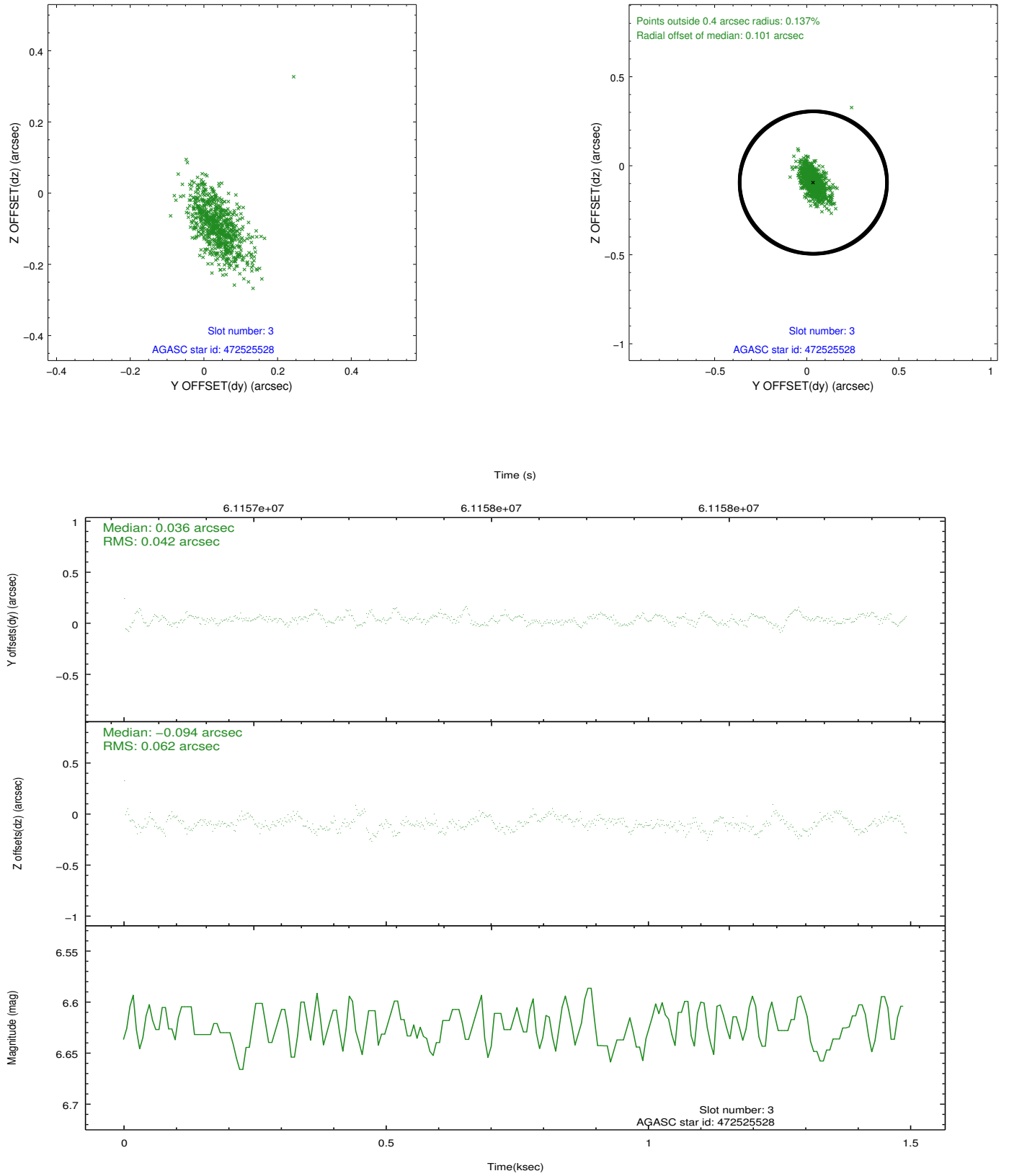


Slot Statistics

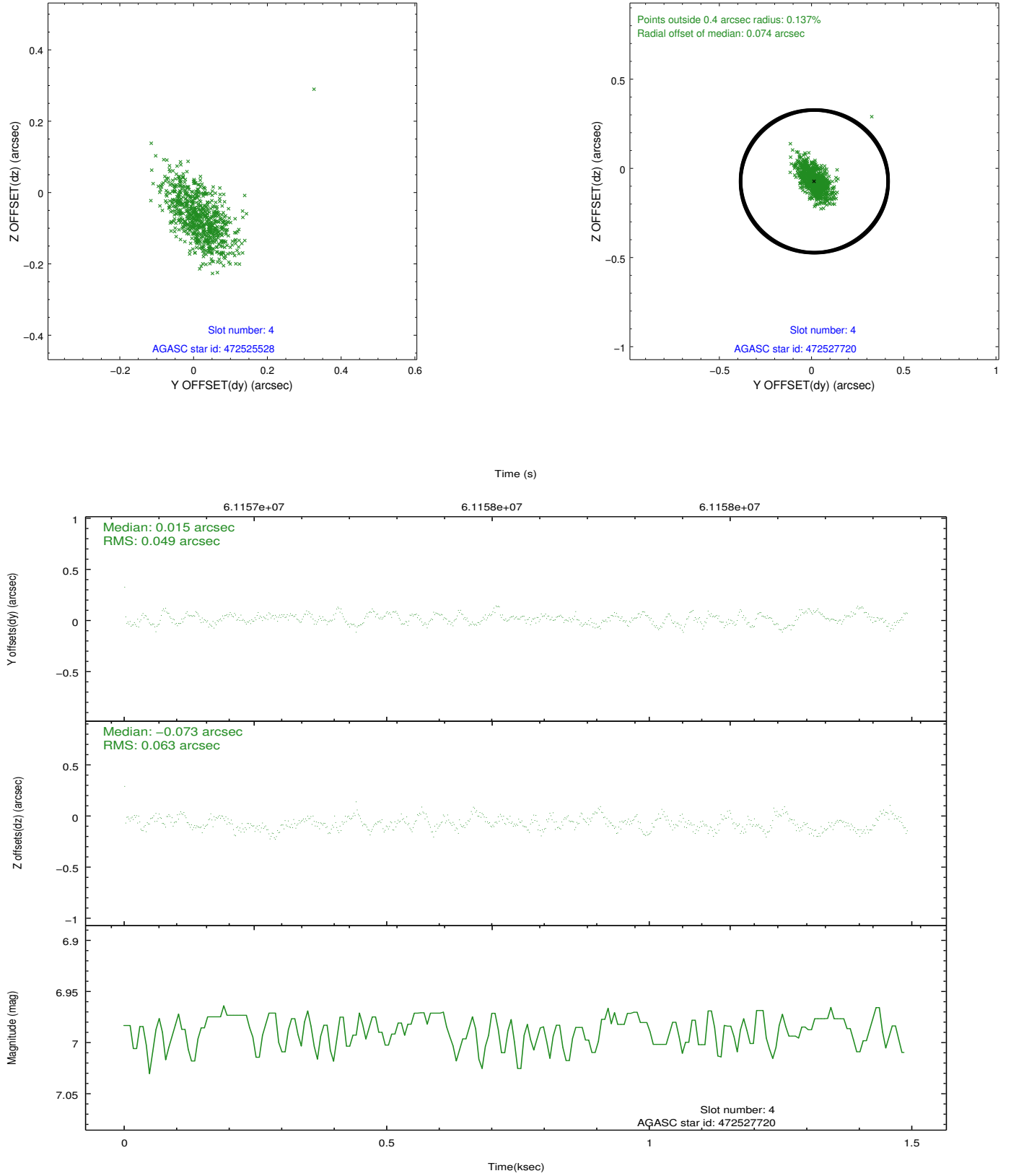
slot	status	id	mag	n_pts	med_dy	med_dz	dr1	dr2	ra	dec	mean_y	mean_z
0	FID	HRC-I-2	6.99	728	0.009	-0.009	0.006	0.011	0.000000	0.000000	856.13	-1290.31
1	FID	HRC-I-3	7.04	728	0.061	-0.061	0.005	0.009	0.000000	0.000000	-1183.80	1013.97
2	FID	HRC-I-4	6.98	728	0.049	-0.016	0.006	0.009	0.000000	0.000000	1284.67	1014.82
3	GUIDE	472525528	6.63	728	0.036	-0.094	0.075	0.132	331.551102	45.248694	380.31	-1525.63
4	GUIDE	472527720	6.99	728	0.015	-0.073	0.081	0.139	331.460205	45.112509	718.81	-1951.18
5	GUIDE	472655152	9.44	727	-0.058	0.161	0.101	0.162	332.504239	45.862991	-561.97	1598.20
6	UNUSED		0.00	0	0.000	0.000	0.000	0.000	0.000000	0.000000	0.00	0.00
7	UNUSED		0.00	0	0.000	0.000	0.000	0.000	0.000000	0.000000	0.00	0.00

2.4 Star Slots

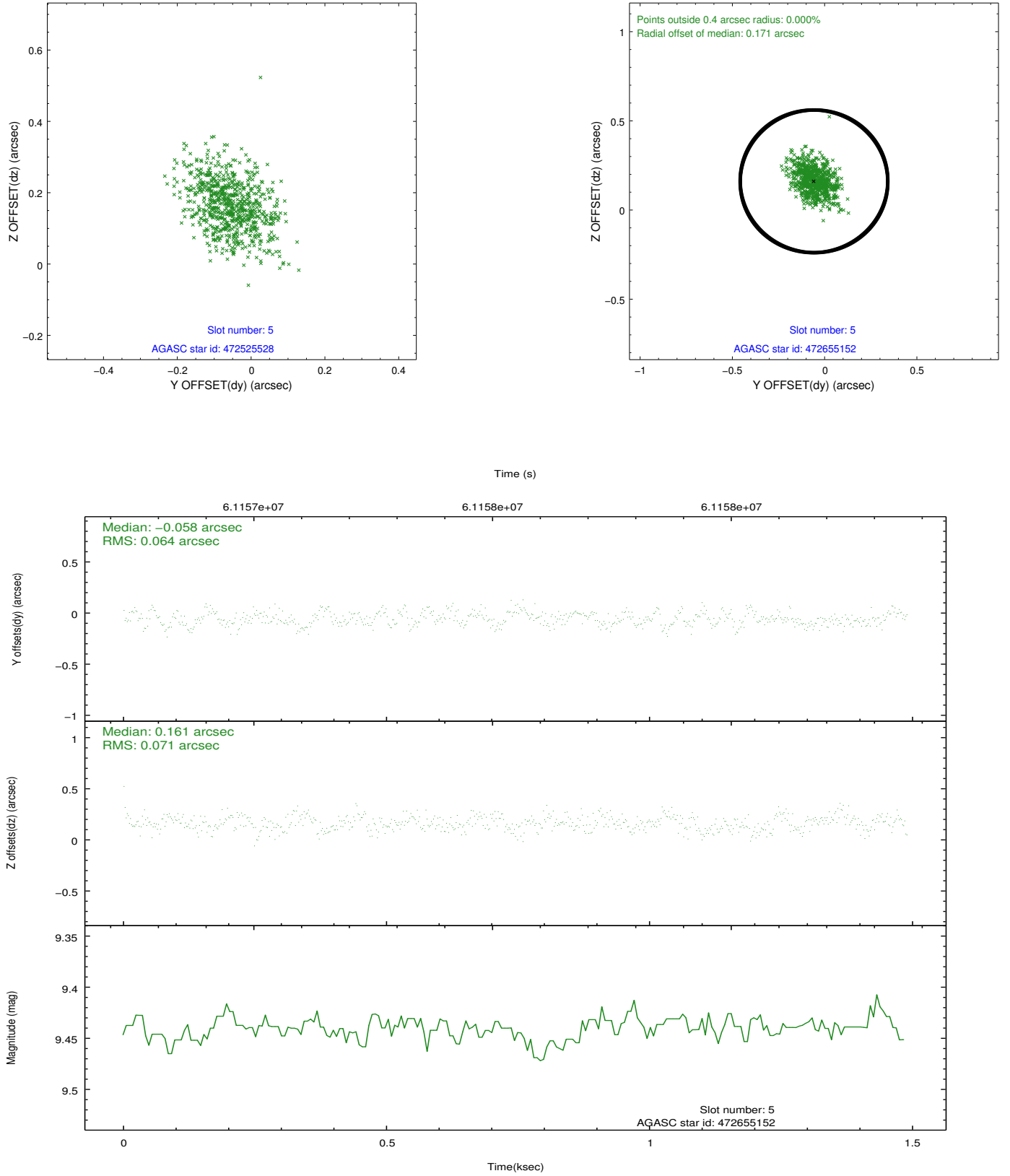
2.4.1 Slot 3



2.4.2 Slot 4

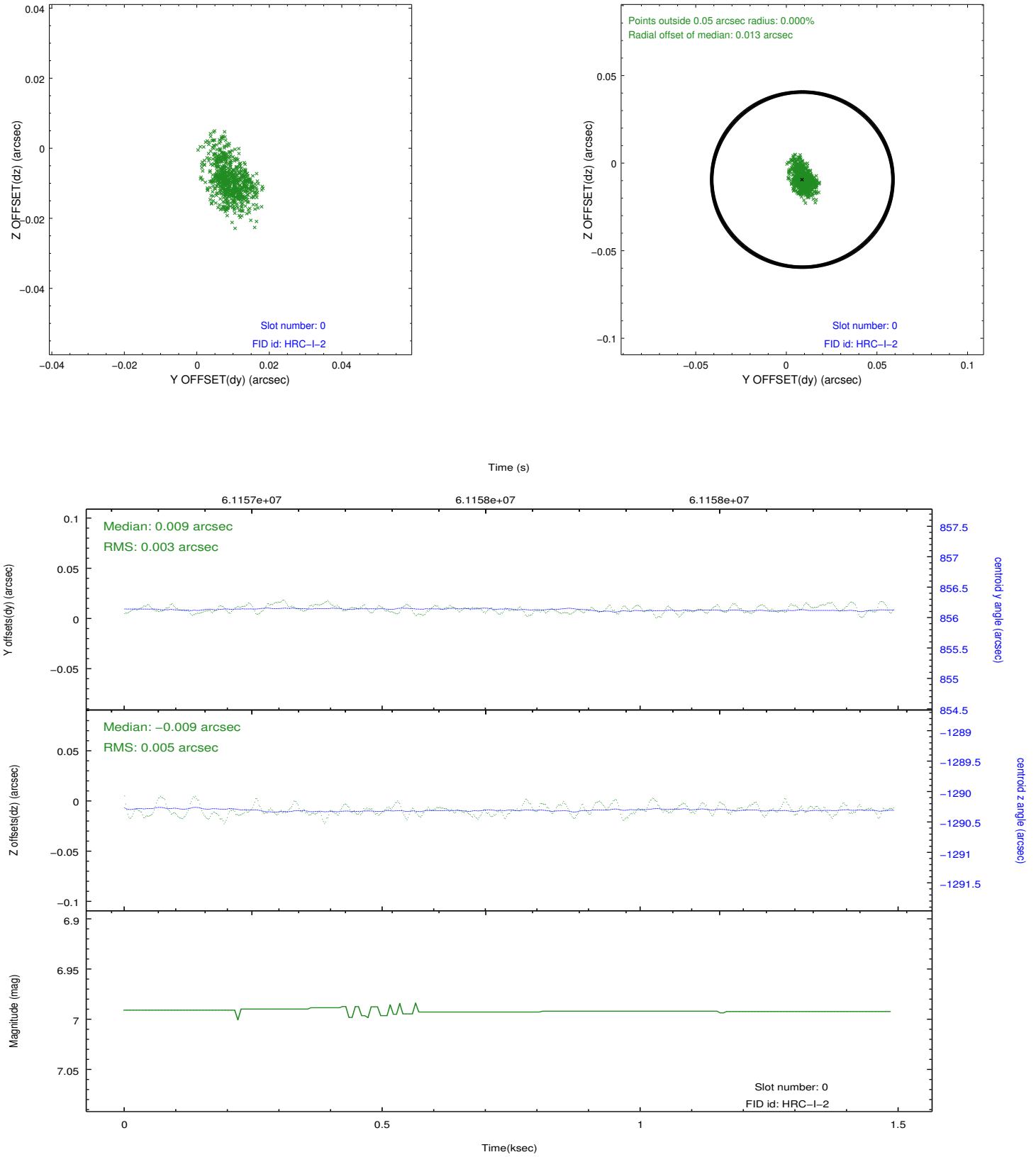


2.4.3 Slot 5

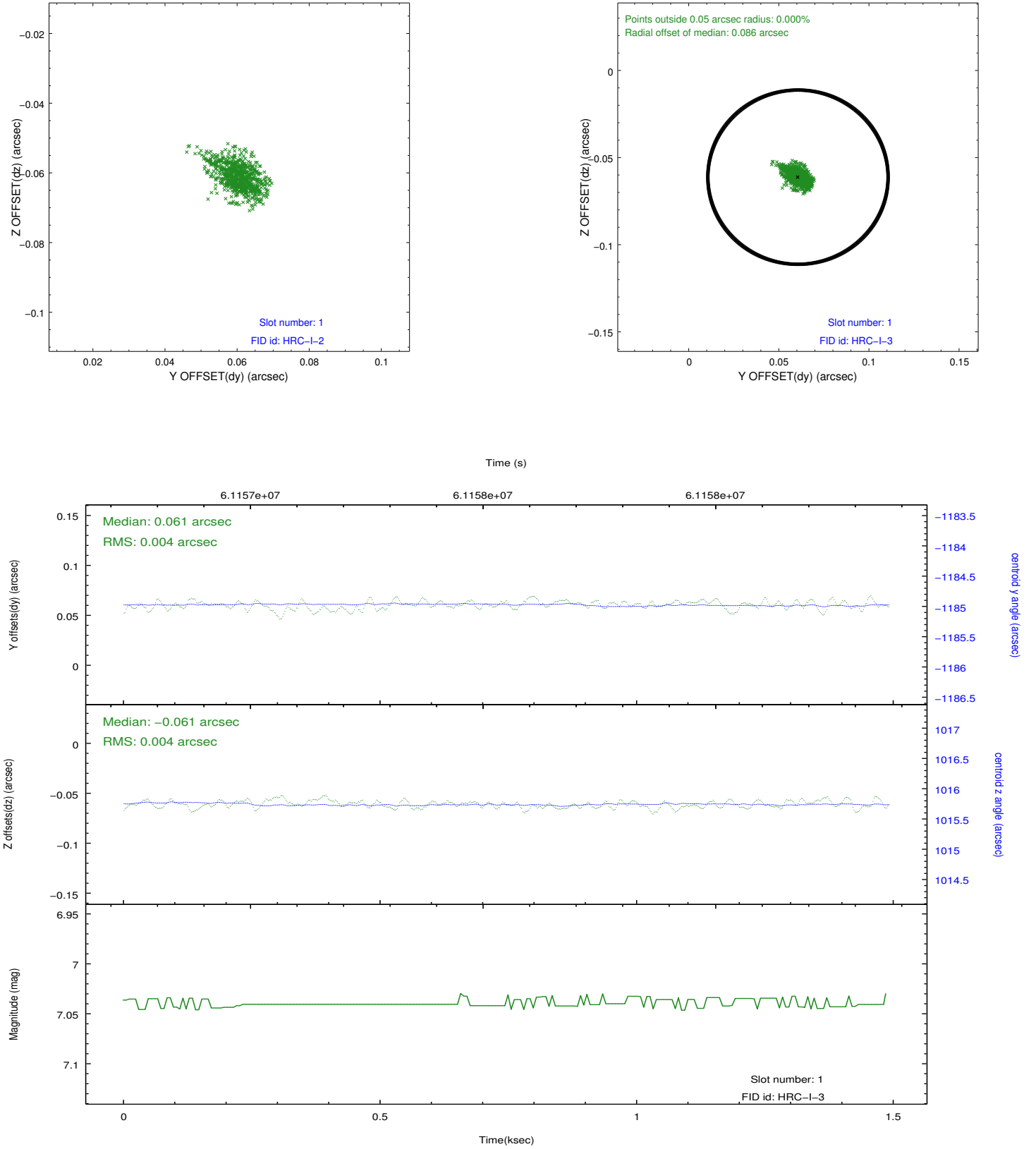


2.5 FID Slots

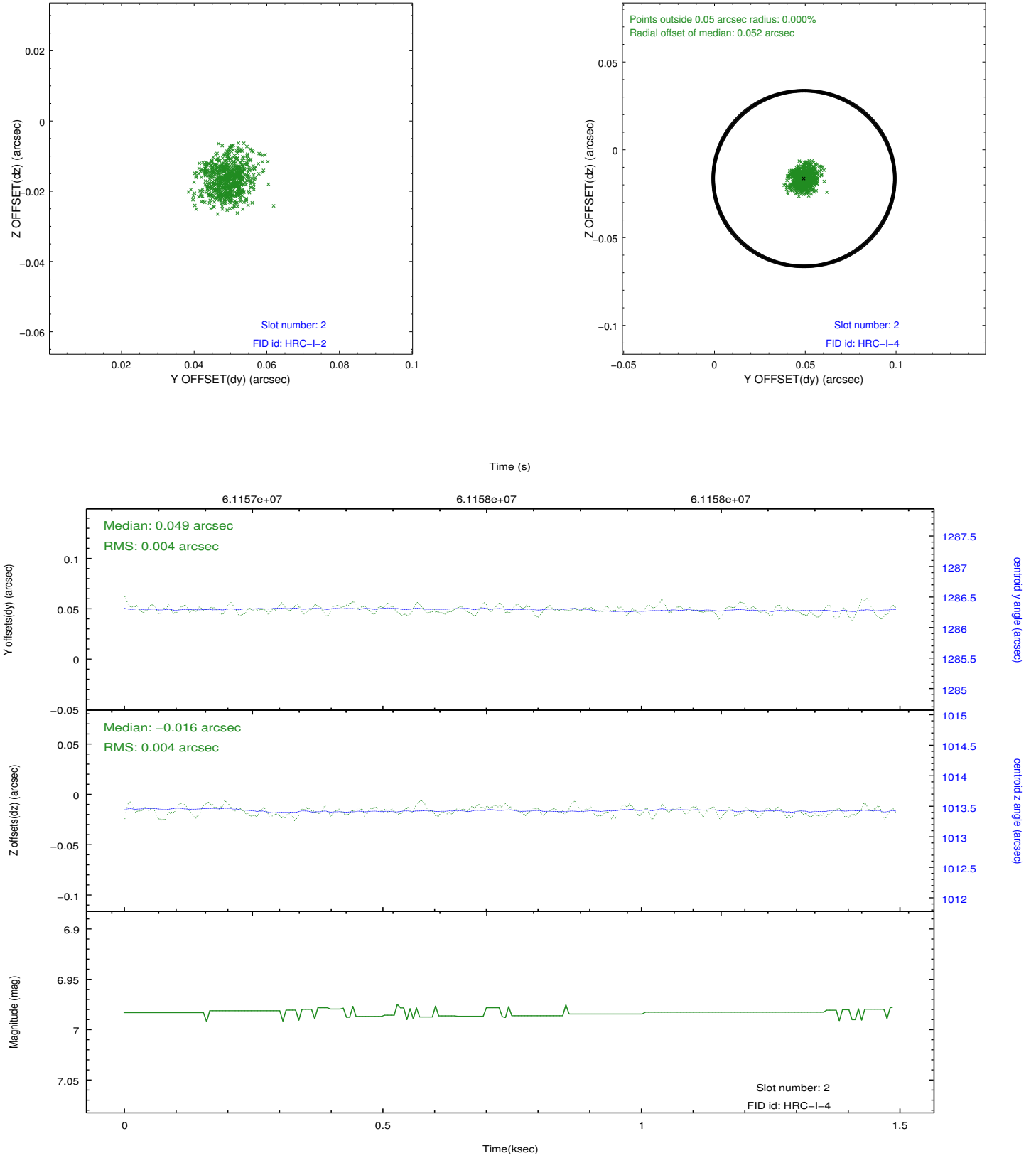
2.5.1 Slot 0



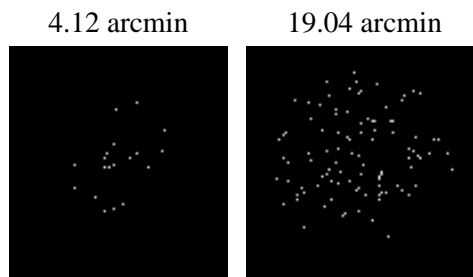
2.5.2 Slot 1



2.5.3 Slot 2



3 Point Sources



A Summary

A.1 Status

V&V Scientist	Jen Lauer
V&V Date (YYYY-MM-DD)	2009.11.27
V&V Edition	1
V&V Disposition and Status	OK
V&V Charge Time	1.21

A.2 Comments

HRC-I cal: ARLac for image blur

Source is off-axis at the edge of the detector.