

V&V Reference Report

L2 ASCDS Version : 8.1.1

Observation 1354 - L2 Version 4

Chandra X-Ray Center

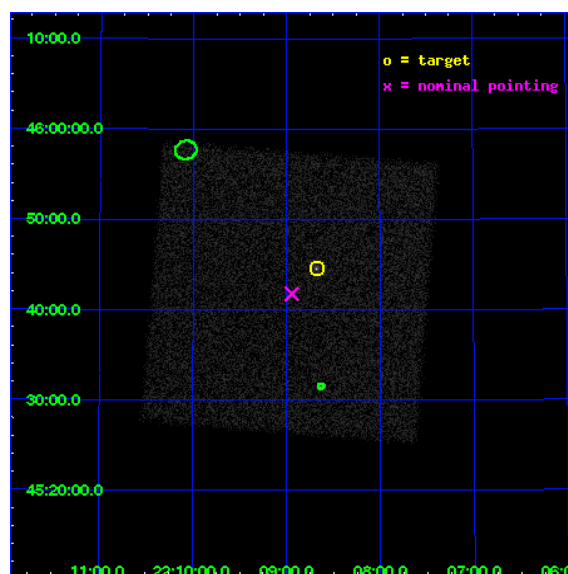
L2 Processing Date : Nov 19 2009

Contents

1	Front	2
2	OBI	3
2.1	OBI	3
2.1.1	Images	3
2.1.2	Parameters	4
2.1.3	Events	4
2.2	Compared Parameters	5
2.3	Aspect	6
2.4	Star Slots	9
2.4.1	Slot 3	9
2.4.2	Slot 4	10
2.4.3	Slot 5	11
2.4.4	Slot 6	12
2.4.5	Slot 7	13
2.5	FID Slots	14
2.5.1	Slot 0	14
2.5.2	Slot 1	15
2.5.3	Slot 2	16
3	Point Sources	17
A	Summary	18
A.1	Status	18
A.2	Comments	18

1 Front

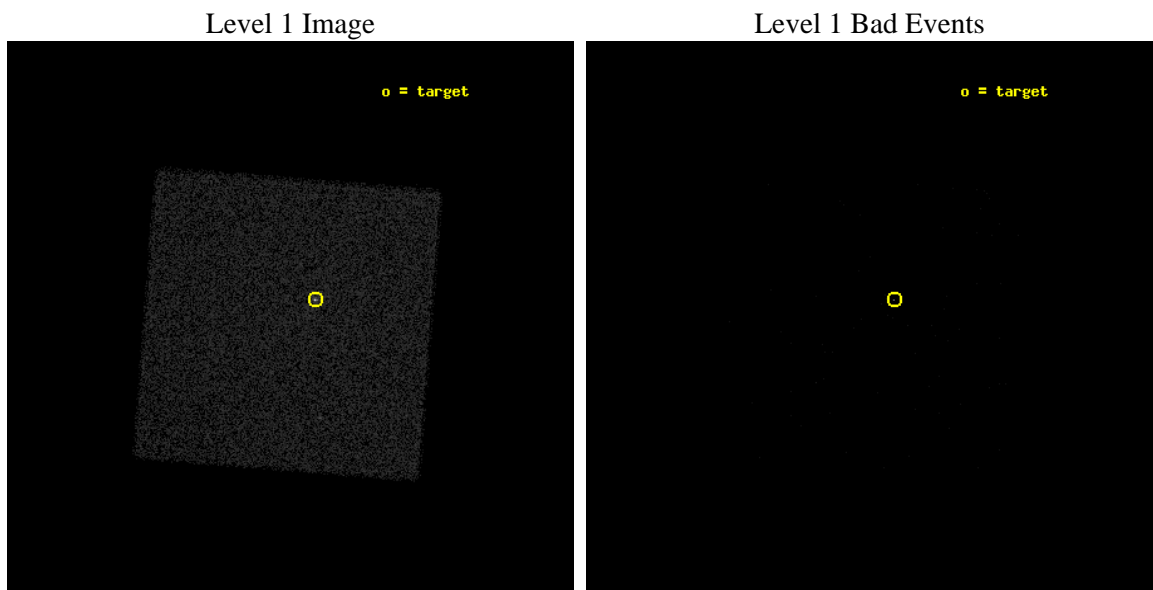
seq_num	280304	Sequence number
obs_id	1354	Observation id
title	 	Proposal title
observer	Dr. CXC Calibration	Principal investigator
object	ArLac	Source name
ra_targ	332.1701	Observer's specified target RA
dec_targ	45.7423	Observer's specified target Dec
ra_nom	332.23568195873	Nominal RA
dec_nom	45.696314738742	Nominal Dec
roll_nom	229.56403874104	Nominal Roll
revision	4	Processing version of data
ontime	1275.3562959433	[s]
livetime	1266.4140210967	Ontime multiplied by DTCOR
l2events	44303	Number of level 2 events



2 OBI

2.1 OBI

2.1.1 Images



2.1.2 Parameters

obi_num	0	Obi number	sched_exp_time	1000.000000	Scheduled observation exposure time
ascdsver	8.1.1	Processing system revision	ontime	1275.3562959433	[s]
caldsver	4.1.4	 	l1events	70126	Number of level 1 events
date	2009-11-19T05:18:31	Date and time of file creation			
revision	4	Processing version of data			

2.1.3 Events

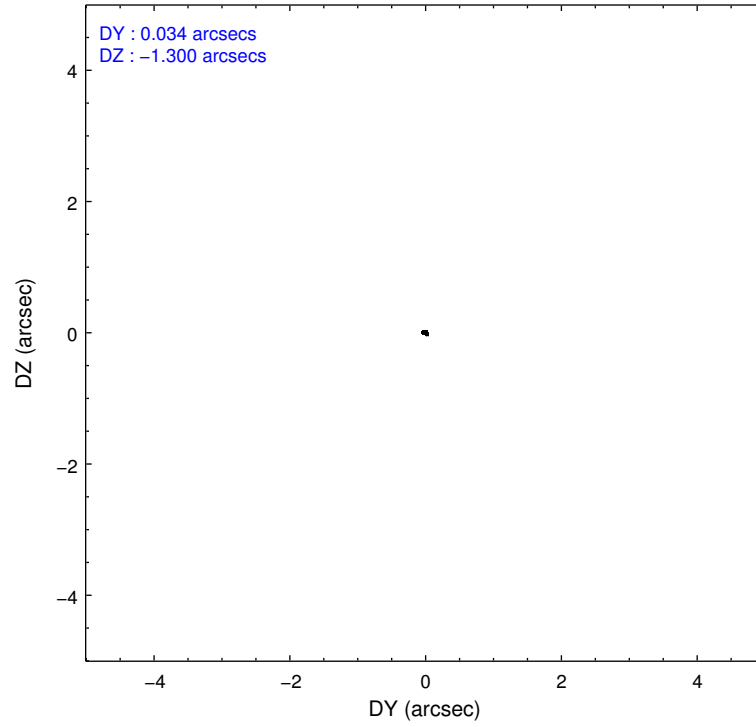
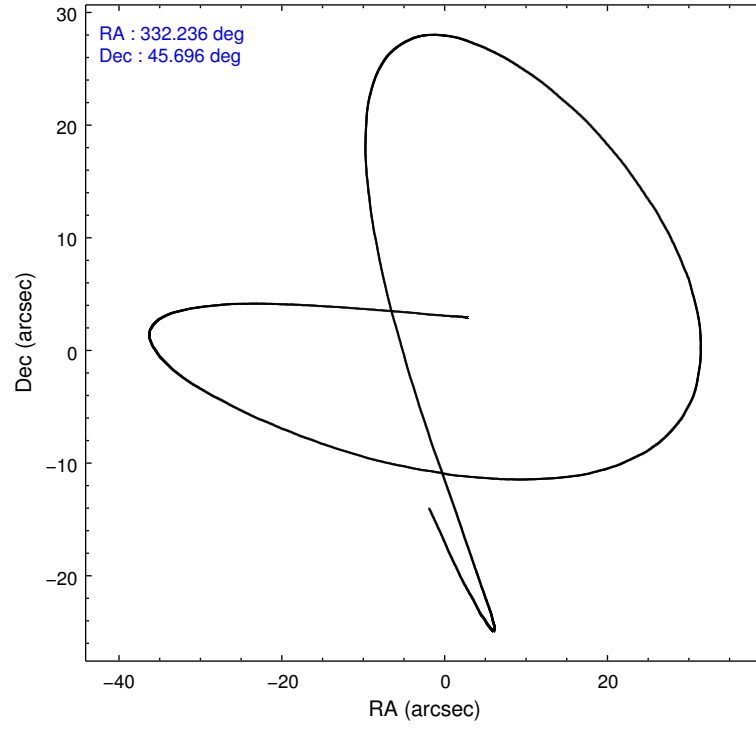
Level 1 Events

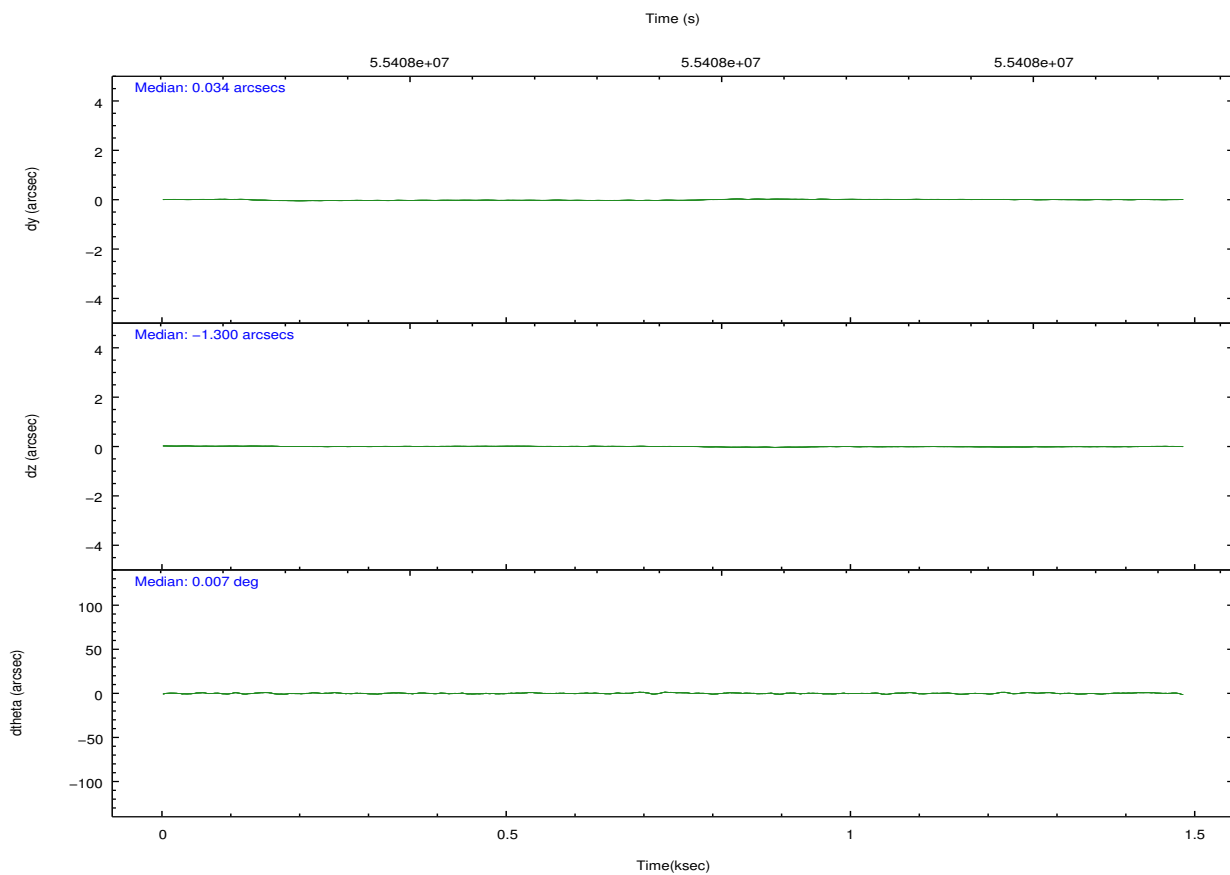
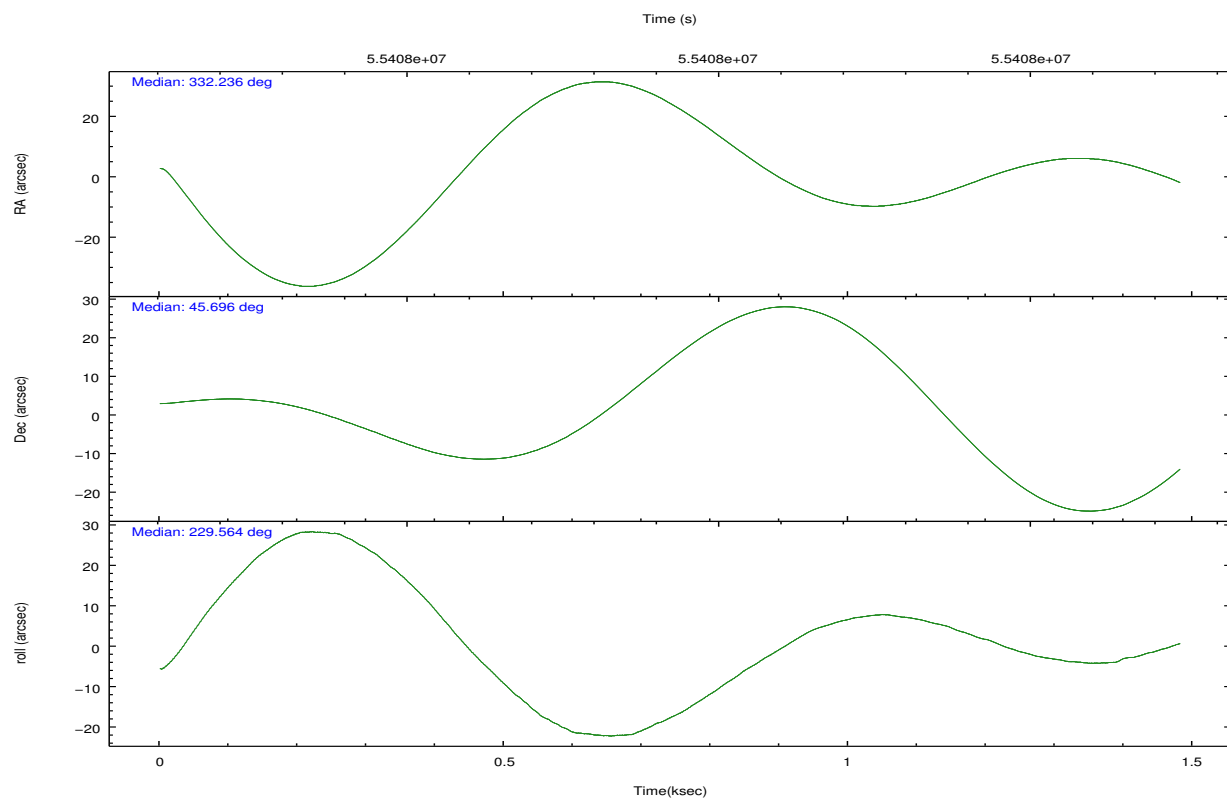
	segment 0
level 1 events	70126
rejected events	2744
rejected %	3%

2.2 Compared Parameters

Parameter	Planned	Actual	Parameter	Planned	Actual
Instrument	HRC	HRC	Obspar format version number	6	6
Detector	HRC-I	HRC-I	Obspar file type	PREDICTED	ACTUAL
Grating	NONE	NONE	Obspar update status	NONE	UPDATED
Data mode	OBSERVING	OBSERVING			
Observation mode	POINTING	POINTING			
Pointing RA	332.243730	332.2356819587283			
Pointing Dec	45.724028	45.69631473874247			
Pointing Roll	229.653749	229.5640387410413			
SIM focus pos (mm)	-0.040293	-0.2342646132009995			
SIM defocus (mm)	1	0.806028007457875			
SIM translation stage pos (mm)	126.985494	126.9854943052878			
SIM translation stage offset (mm)	0	-5.413686238853188e-06			
Observation start time	55407664.184000	55406997.920984			
Observation start date	1999-10-04T07:00:00	1999-10-04T06:49:57			
Observation end time	55408664.184000	55408797.821049			
Observation end date	1999-10-04T07:16:40	1999-10-04T07:19:57			

2.3 Aspect



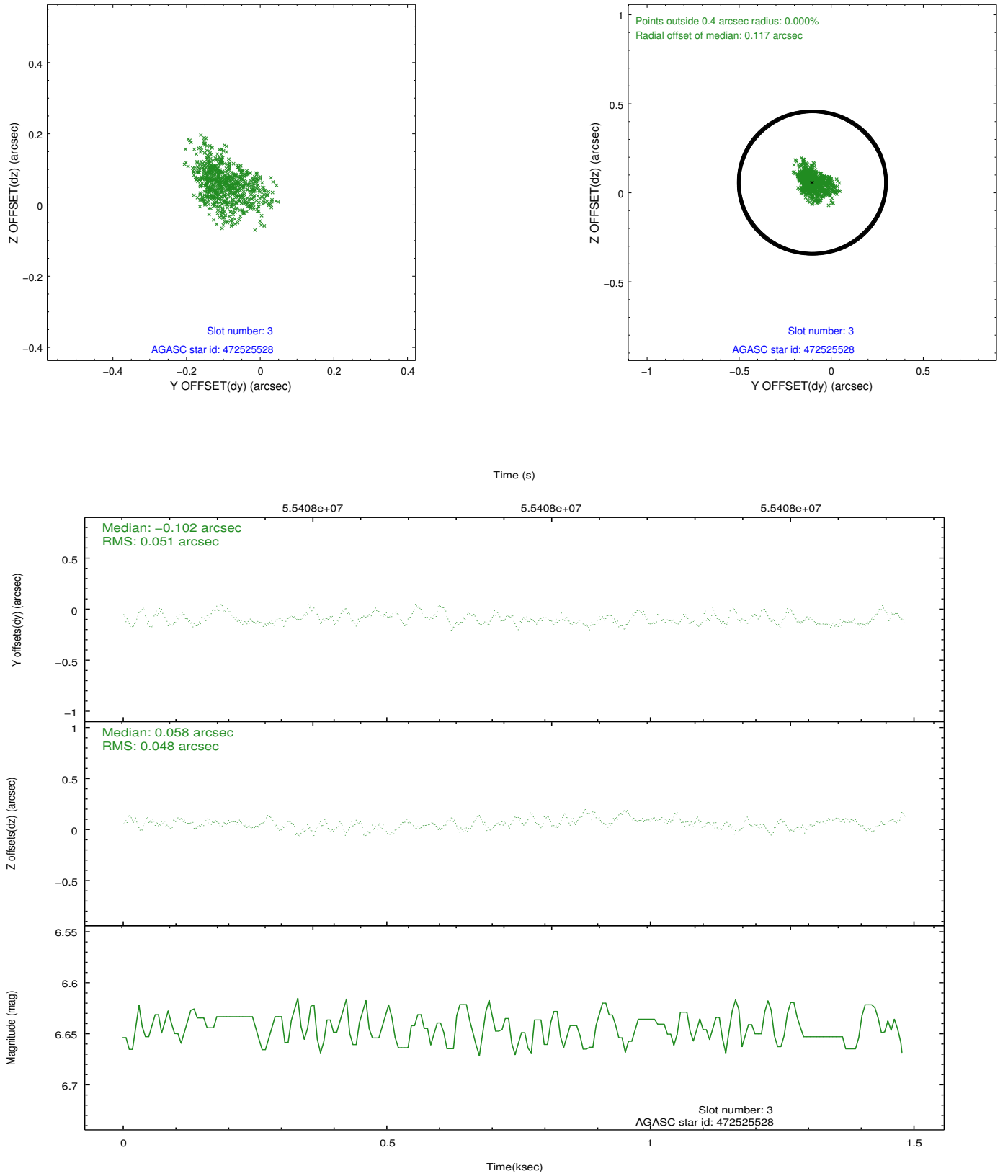


Slot Statistics

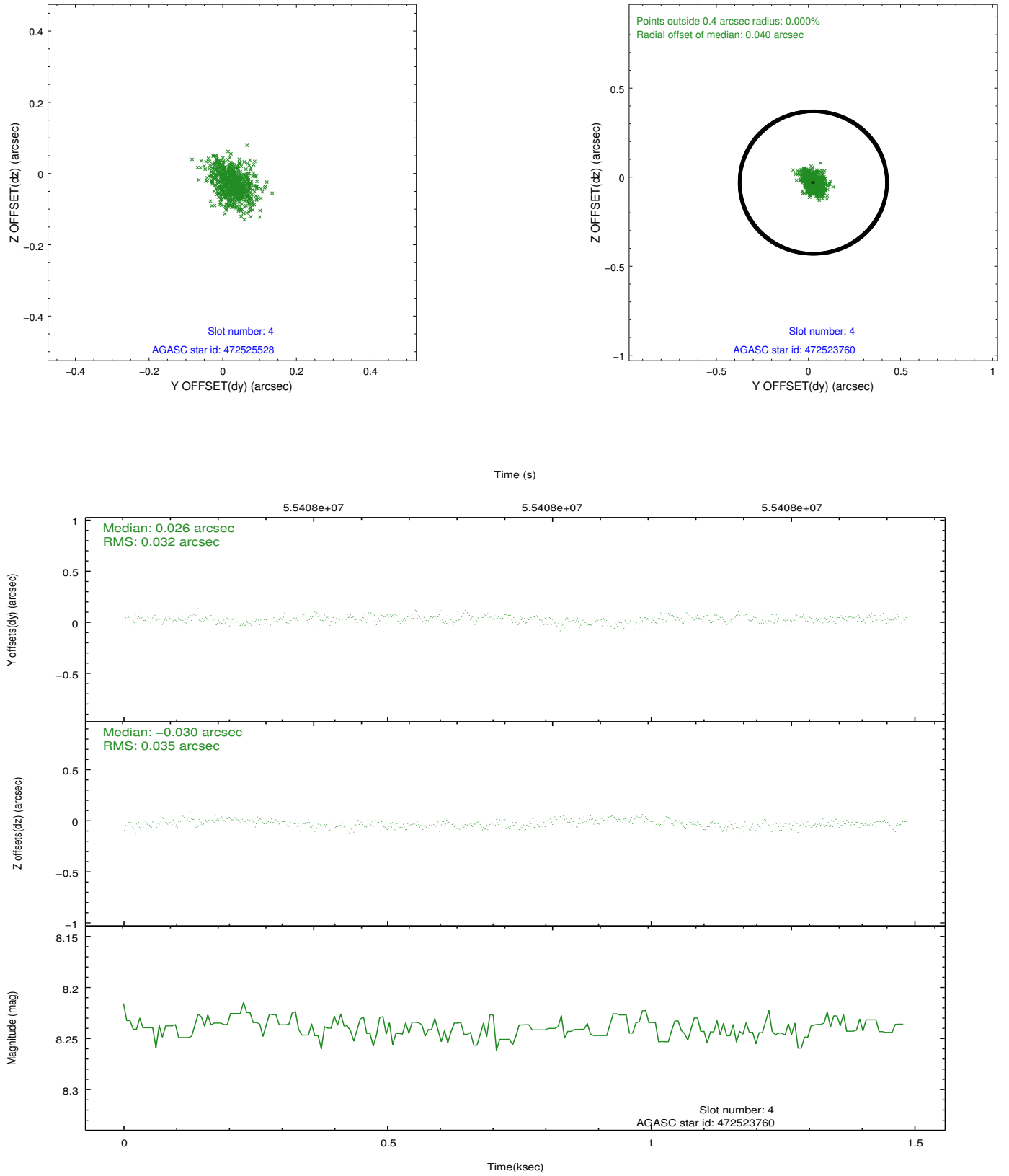
slot	status	id	mag	n_pts	med_dy	med_dz	dr1	dr2	ra	dec	mean_y	mean_z
0	FID	HRC-I-1	6.96	724	0.058	-0.007	0.006	0.010	0.000000	0.000000	-755.40	-1286.49
1	FID	HRC-I-3	7.05	724	0.057	-0.029	0.006	0.011	0.000000	0.000000	-1185.02	1016.45
2	FID	HRC-I-4	6.99	724	-0.001	-0.054	0.006	0.009	0.000000	0.000000	1285.81	1017.26
3	GUIDE	472525528	6.64	724	-0.102	0.058	0.074	0.121	331.551102	45.248694	2431.52	-234.60
4	GUIDE	472523760	8.24	724	0.026	-0.030	0.051	0.084	331.645363	45.403260	1855.03	-408.77
5	GUIDE	472665256	9.01	724	0.022	0.101	0.100	0.186	332.808125	46.195041	-2207.38	-29.23
6	GUIDE	472659832	9.46	723	0.014	-0.014	0.077	0.124	332.780399	46.098139	-1903.56	146.49
7	GUIDE	472655152	9.43	723	0.021	-0.093	0.084	0.134	332.504239	45.862991	-810.80	173.64

2.4 Star Slots

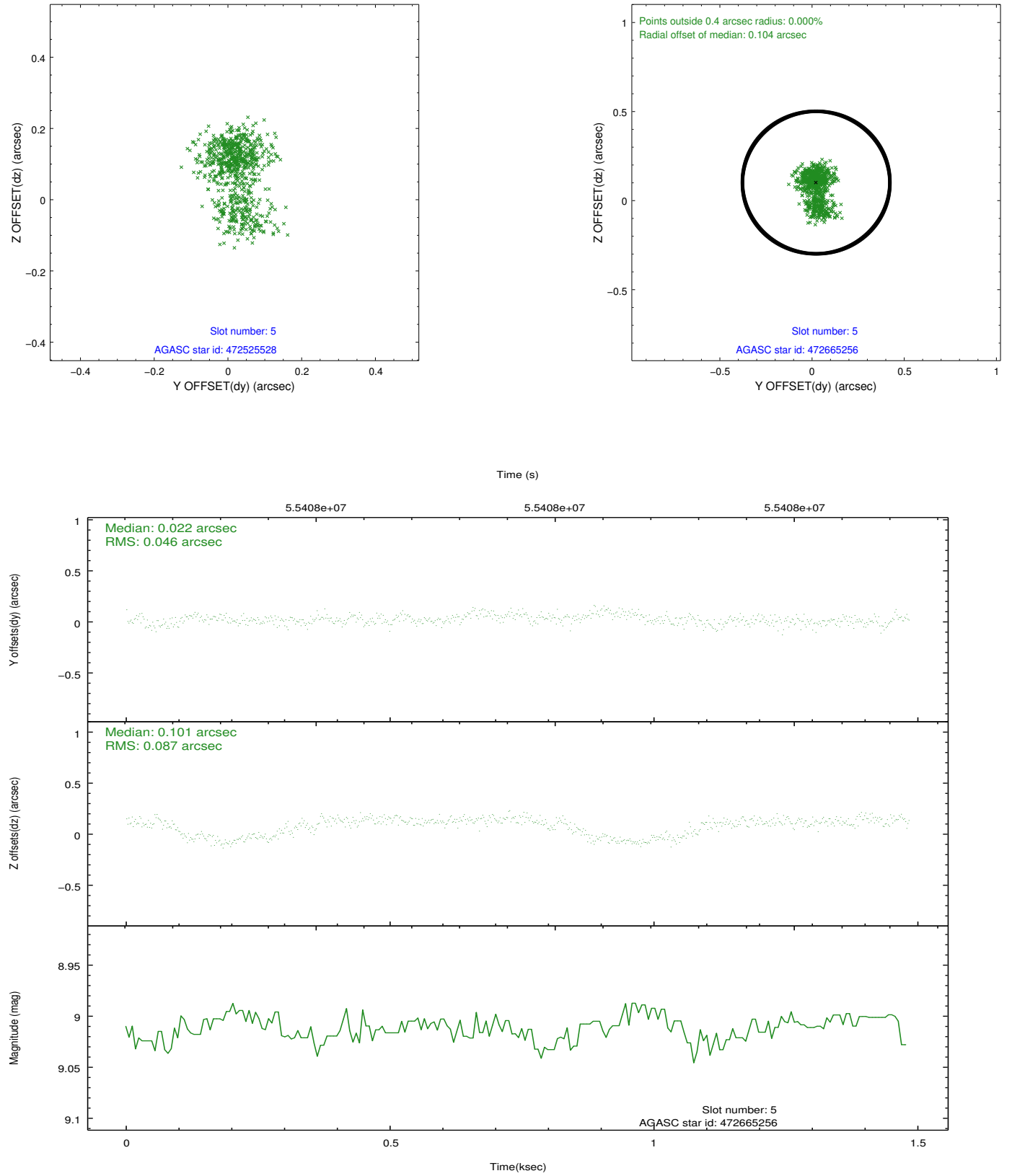
2.4.1 Slot 3



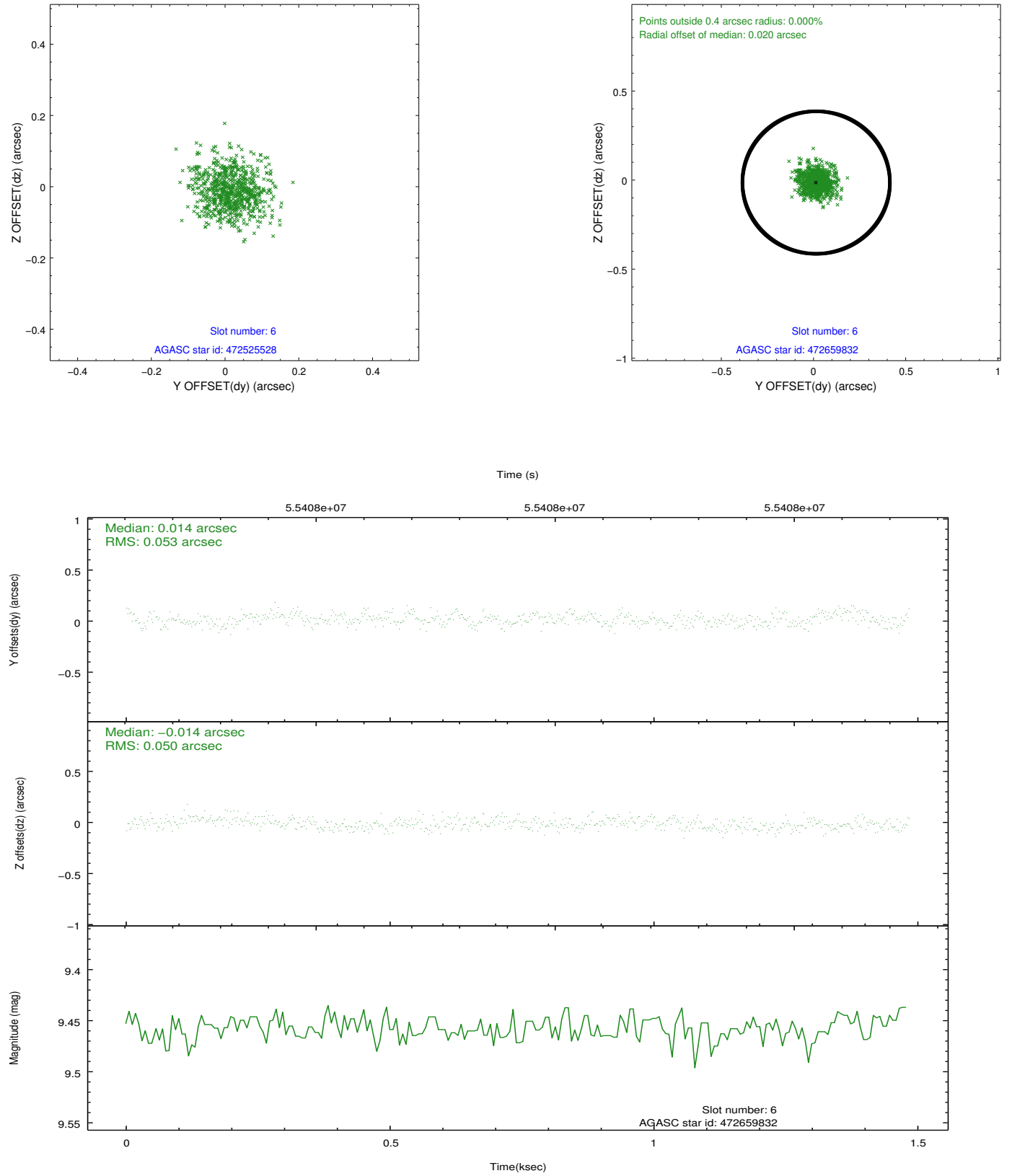
2.4.2 Slot 4



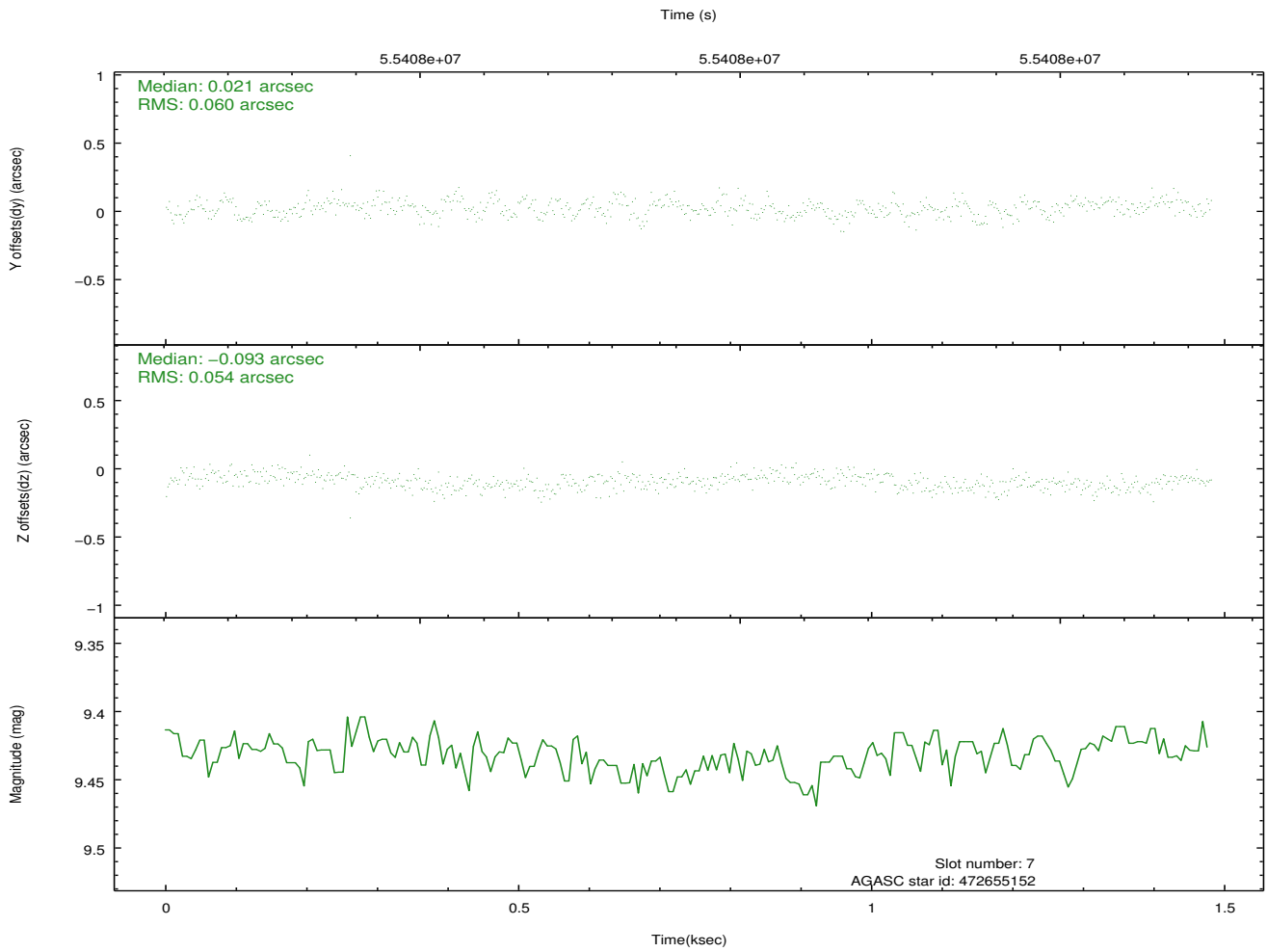
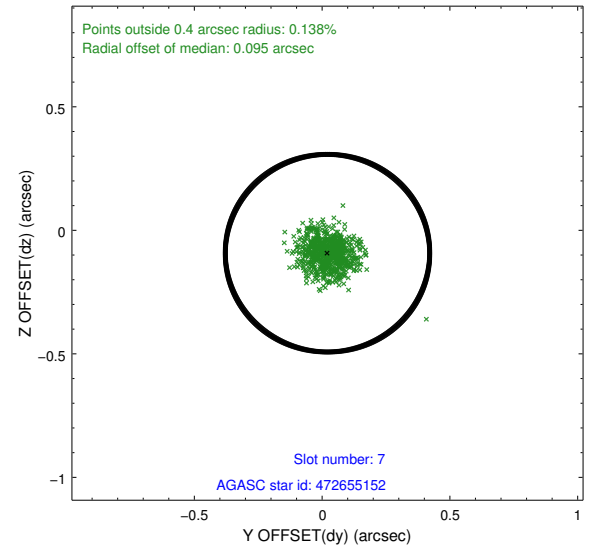
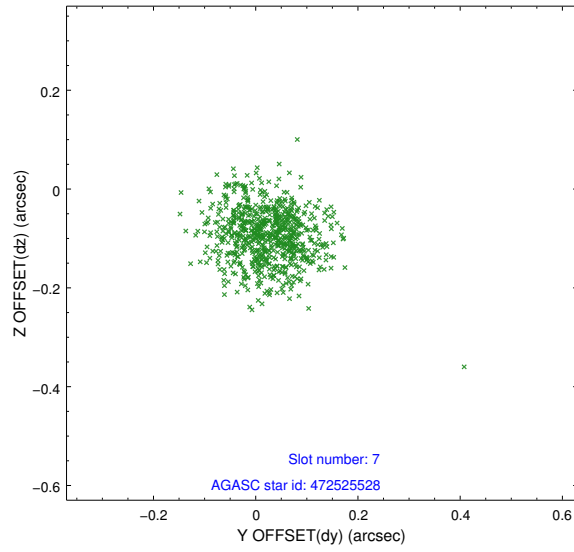
2.4.3 Slot 5



2.4.4 Slot 6

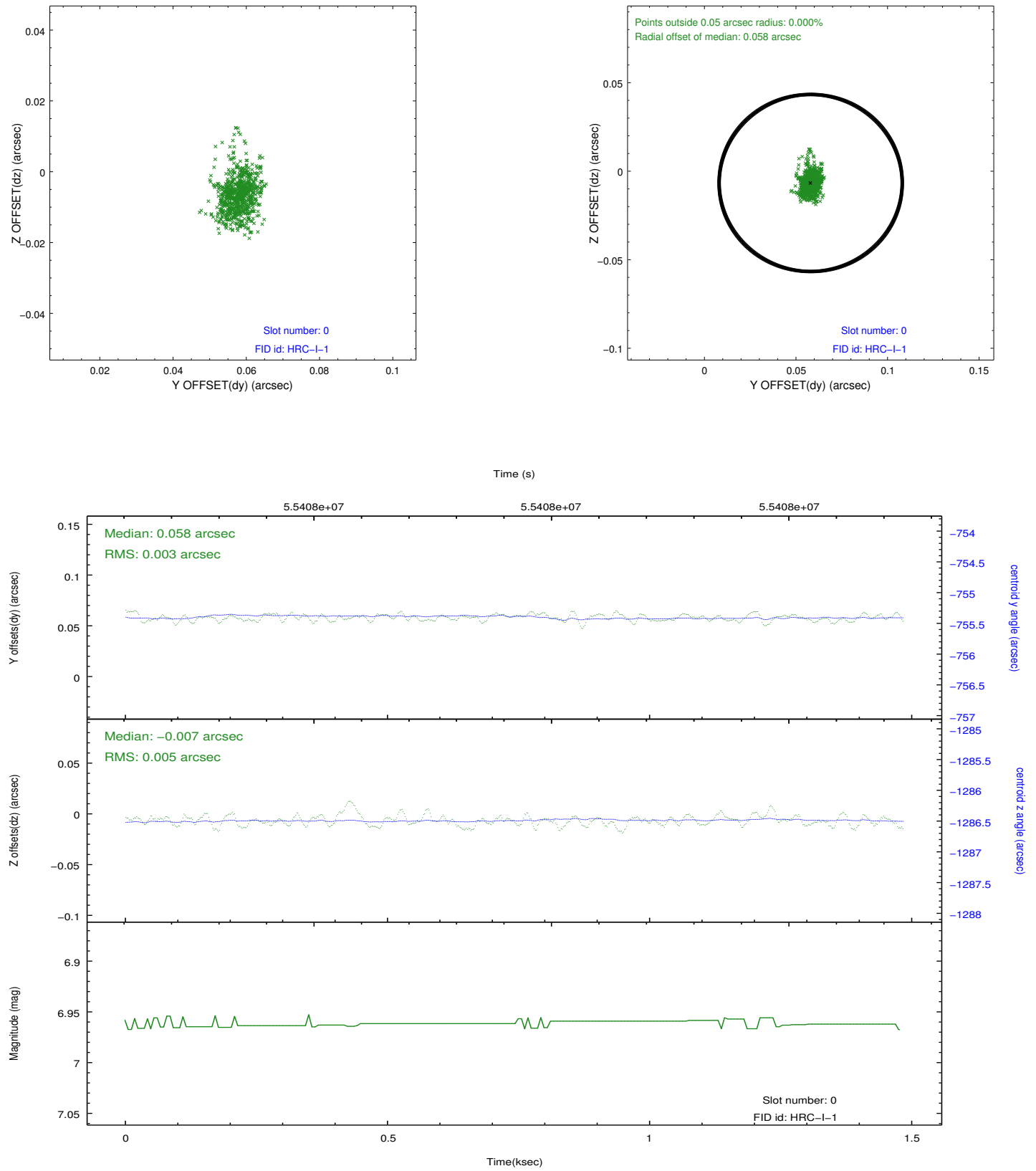


2.4.5 Slot 7

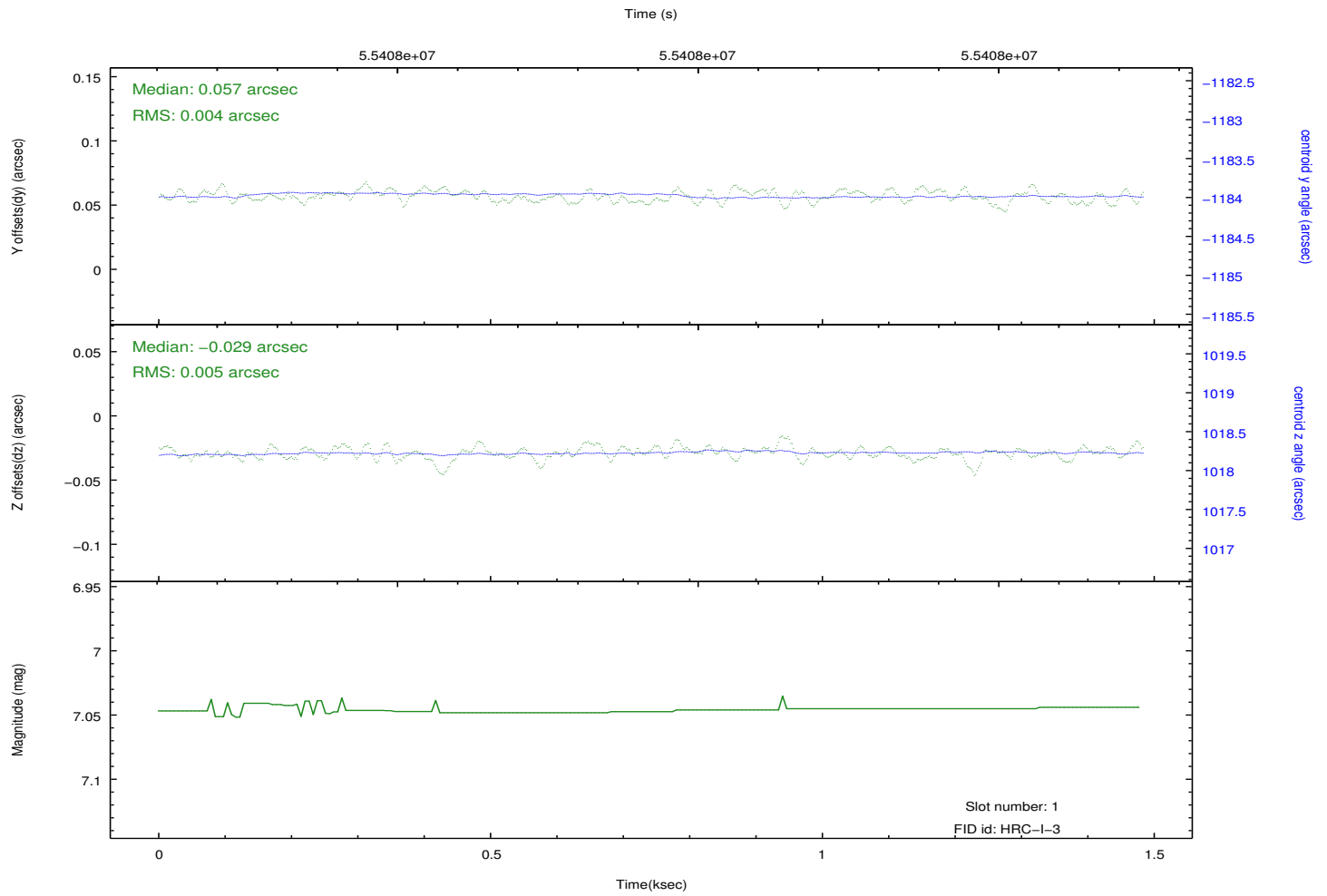
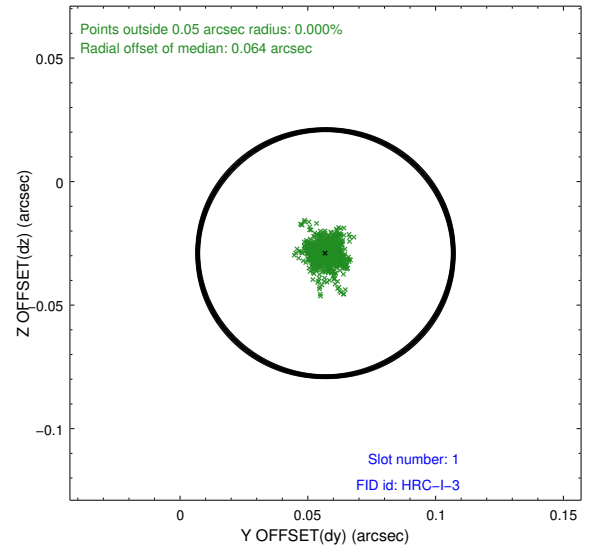
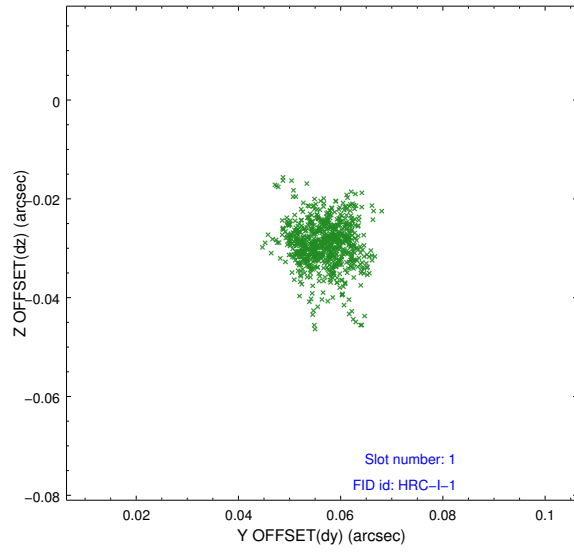


2.5 FID Slots

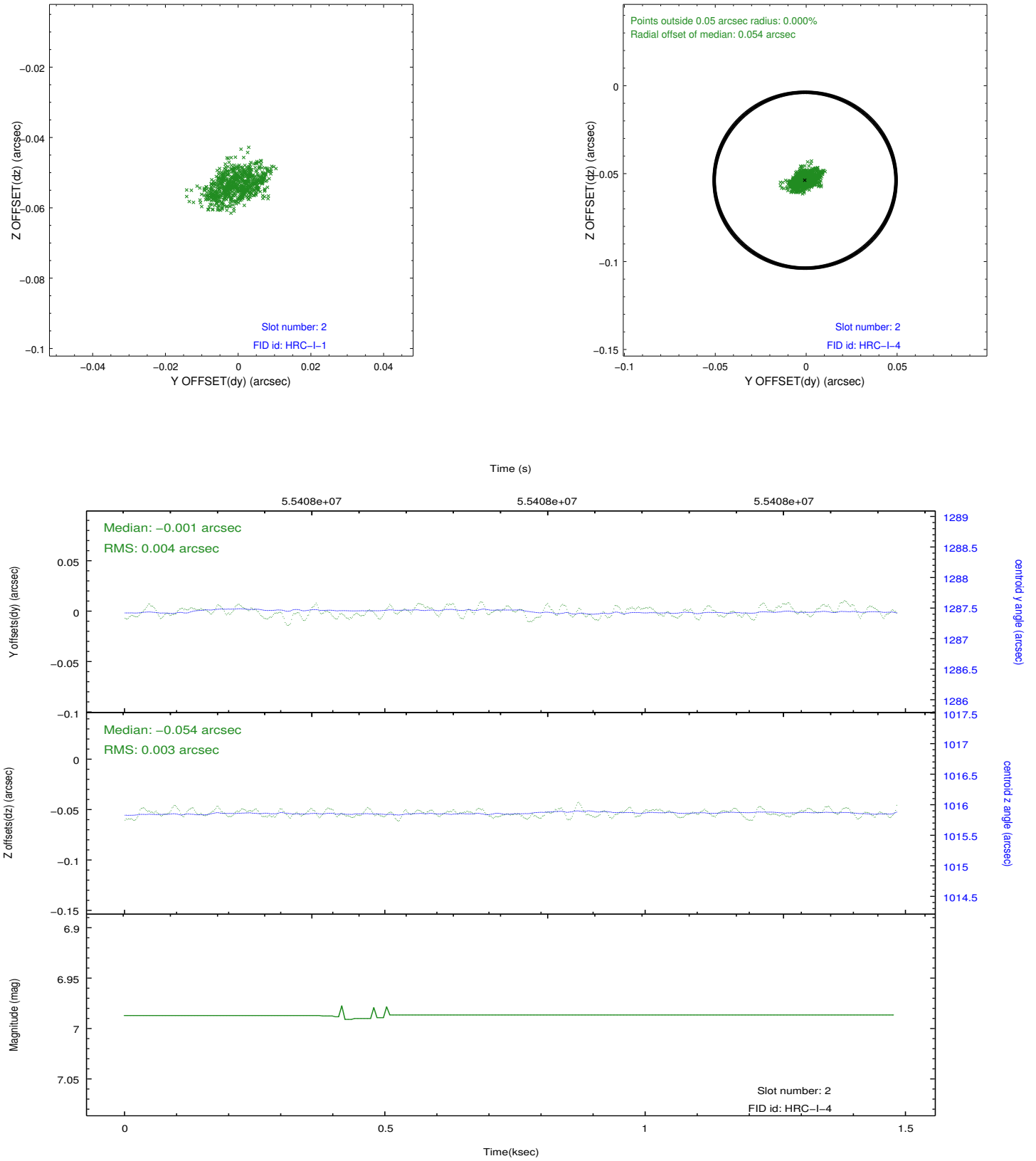
2.5.1 Slot 0



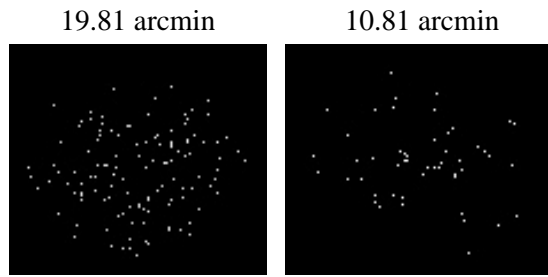
2.5.2 Slot 1



2.5.3 Slot 2



3 Point Sources



A Summary

A.1 Status

V&V Scientist	Beth Sundheim
V&V Date (YYYY-MM-DD)	2009.11.20
V&V Edition	1
V&V Disposition and Status	OK
V&V Charge Time	1.214

A.2 Comments

Charge time for this ObsID remains at original value of 1.21 ksec, although with the current processing the charge time would have been 1.275 ksec.

==

The ObsID series 1319-1382 were intended to access the HRC-I gain variation across the detector as a function of MCP HV. They were performed as triples (3 different HV settings at each Y-/Z-offset). The best HRC-I focus was not determined at the time the observations were performed (the data to determine that were being analyzed during this series).