

# V&V Reference Report

## L2 ASCDS Version : 8.4.5

Observation 13184 - L2 Version 2  
Chandra X-Ray Center

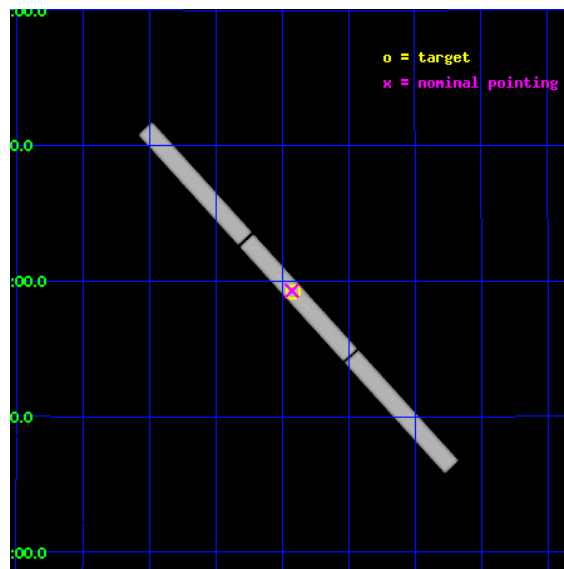
L2 Processing Date : Jul 7 2012

## Contents

<b>1</b>	<b>Front</b>	<b>2</b>
<b>2</b>	<b>OBI</b>	<b>3</b>
2.1	OBI . . . . .	3
2.1.1	Images . . . . .	3
2.1.2	Parameters . . . . .	4
2.1.3	Events . . . . .	4
2.2	Compared Parameters . . . . .	5
2.3	Aspect . . . . .	6
2.4	Star Slots . . . . .	9
2.4.1	Slot 3 . . . . .	9
2.4.2	Slot 4 . . . . .	10
2.4.3	Slot 5 . . . . .	11
2.4.4	Slot 6 . . . . .	12
2.4.5	Slot 7 . . . . .	13
2.5	FID Slots . . . . .	14
2.5.1	Slot 0 . . . . .	14
2.5.2	Slot 1 . . . . .	15
2.5.3	Slot 2 . . . . .	16
<b>3</b>	<b>Gratings</b>	<b>17</b>
3.1	LETG Arm . . . . .	17
<b>A</b>	<b>Summary</b>	<b>19</b>
A.1	Status . . . . .	19
A.2	Comments . . . . .	19

# 1 Front

seq_num	200662	Sequence number
obs_id	13184	Observation id
title	Exploring the Spectral Type Dependence of Coronal Abundance Anomalies	Proposal title
observer	Dr. Brian Wood	Principal investigator
object	Pi3 Ori	Source name
ra_targ	72.46	Observer's specified target RA [deg]
dec_targ	6.96125	Observer's specified target Dec [deg]
ra_nom	72.463284240592	Nominal RA [deg]
dec_nom	6.9647023705023	Nominal Dec [deg]
roll_nom	47.418316705427	Nominal Roll [deg]
revision	2	Processing version of data
ontime	20125.87603724	[s]
livetime	19939.991952941	Ontime multiplied by DTCOR
l2events	1591678	Number of level 2 events

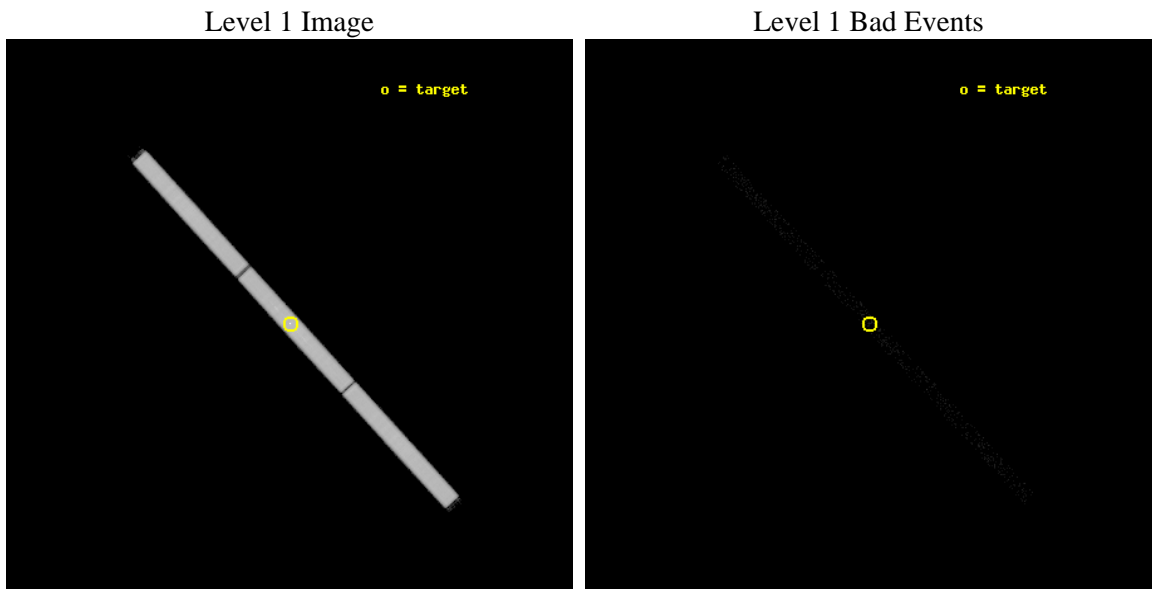




## 2 OBI

### 2.1 OBI

#### 2.1.1 Images



### 2.1.2 Parameters

obi_num	0	Obi number	sched_exp_time	20000.000000	[s] Scheduled observation exposure time
ascdsver	8.4.5	Processing system revision	ontime	20125.87603724	[s]
caldsver	4.5.0	&#160	l1events	2158804	Number of level 1 events
date	2012-07-07T03:54:20	Date and time of file creation			
revision	2	Processing version of data			

### 2.1.3 Events

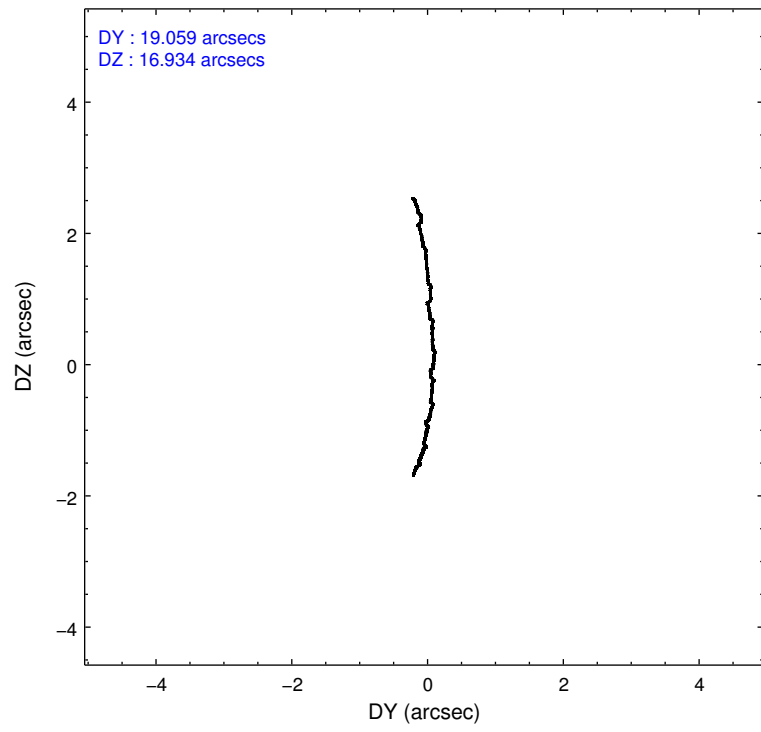
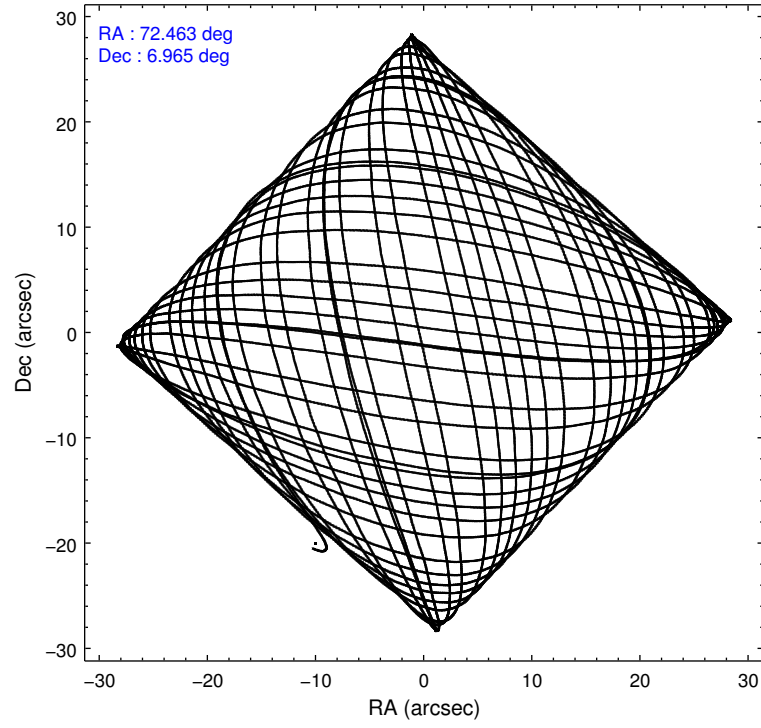
Level 1 Events

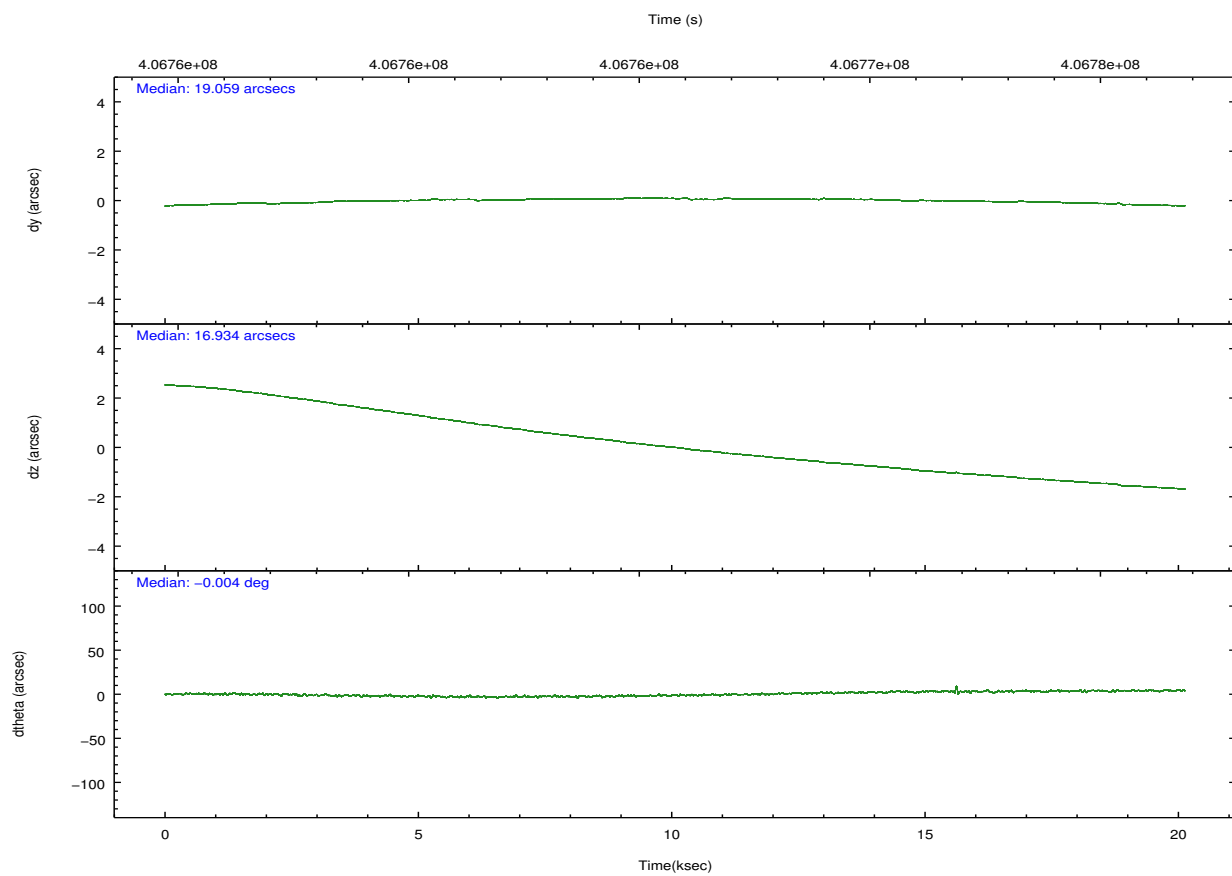
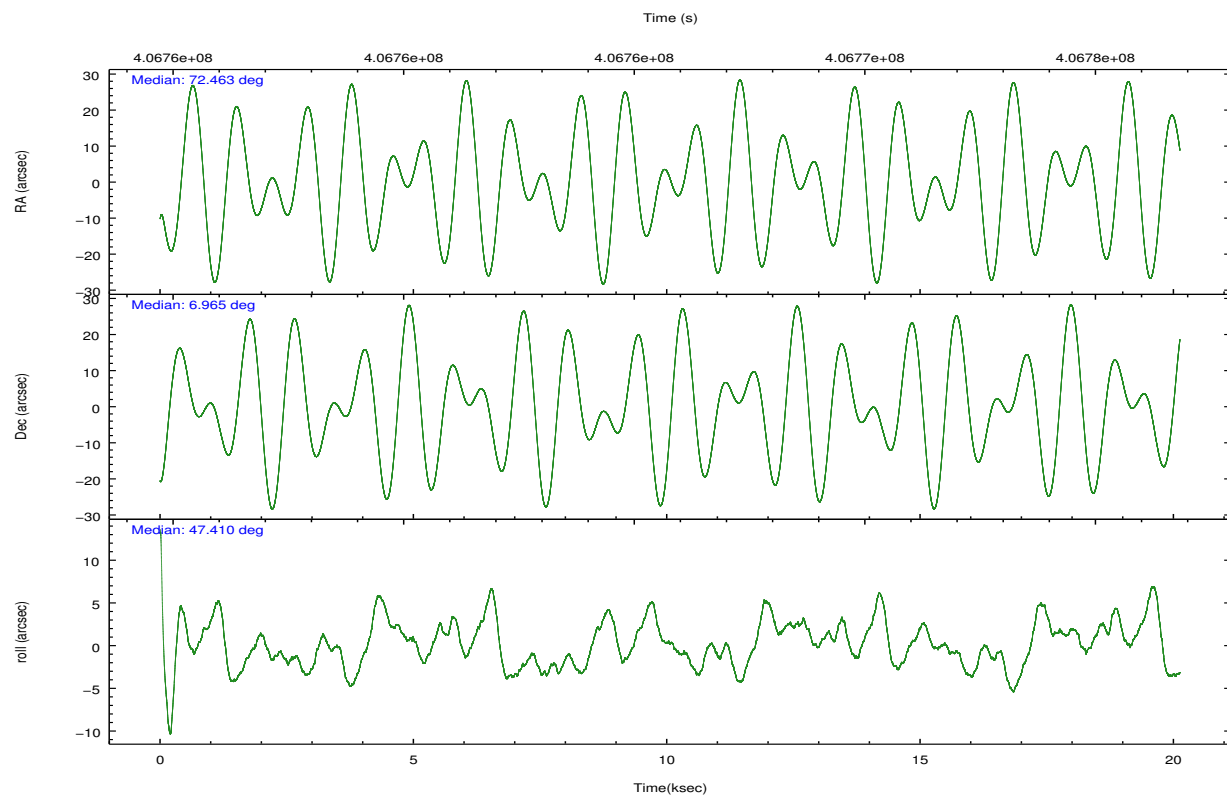
	<b>segment 1</b>	<b>segment 2</b>	<b>segment 3</b>
level 1 events	716430	721679	720695
rejected events	37813	37873	38292
rejected %	5%	5%	5%

## 2.2 Compared Parameters

Parameter	Planned	Actual	Parameter	Planned	Actual
Instrument	HRC	HRC	Obspar format version number	7	7
Detector	HRC-S	HRC-S	Obspar file type	PREDICTED	ACTUAL
Grating	LETG	LETG	Obspar update status	NONE	UPDATED
Data mode	OBSERVING	OBSERVING			
Observation mode	POINTING	POINTING			
[deg] Pointing RA	72.458418	72.46328424059224			
[deg] Pointing Dec	6.936421	6.964702370502319			
[deg] Pointing Roll	47.351551	47.41831670542705			
[mm] SIM focus pos	-1.429586	-1.428180813131781			
[mm] SIM defocus	0.1037507710433287	0.1051558262725154			
[mm] SIM translation stage pos	250.455976	250.466033080201			
[mm] SIM translation stage offset	0	-0.01005468664627074			
[s] Observation start time (MET)	406755841.184000	406754616.69345			
Observation start date	2010-11-21T19:42:55	2010-11-21T19:23:36			
[s] Observation end time (MET)	406775841.184000	406776742.34459			
Observation end date	2010-11-22T01:16:15	2010-11-22T01:32:22			

## 2.3 Aspect



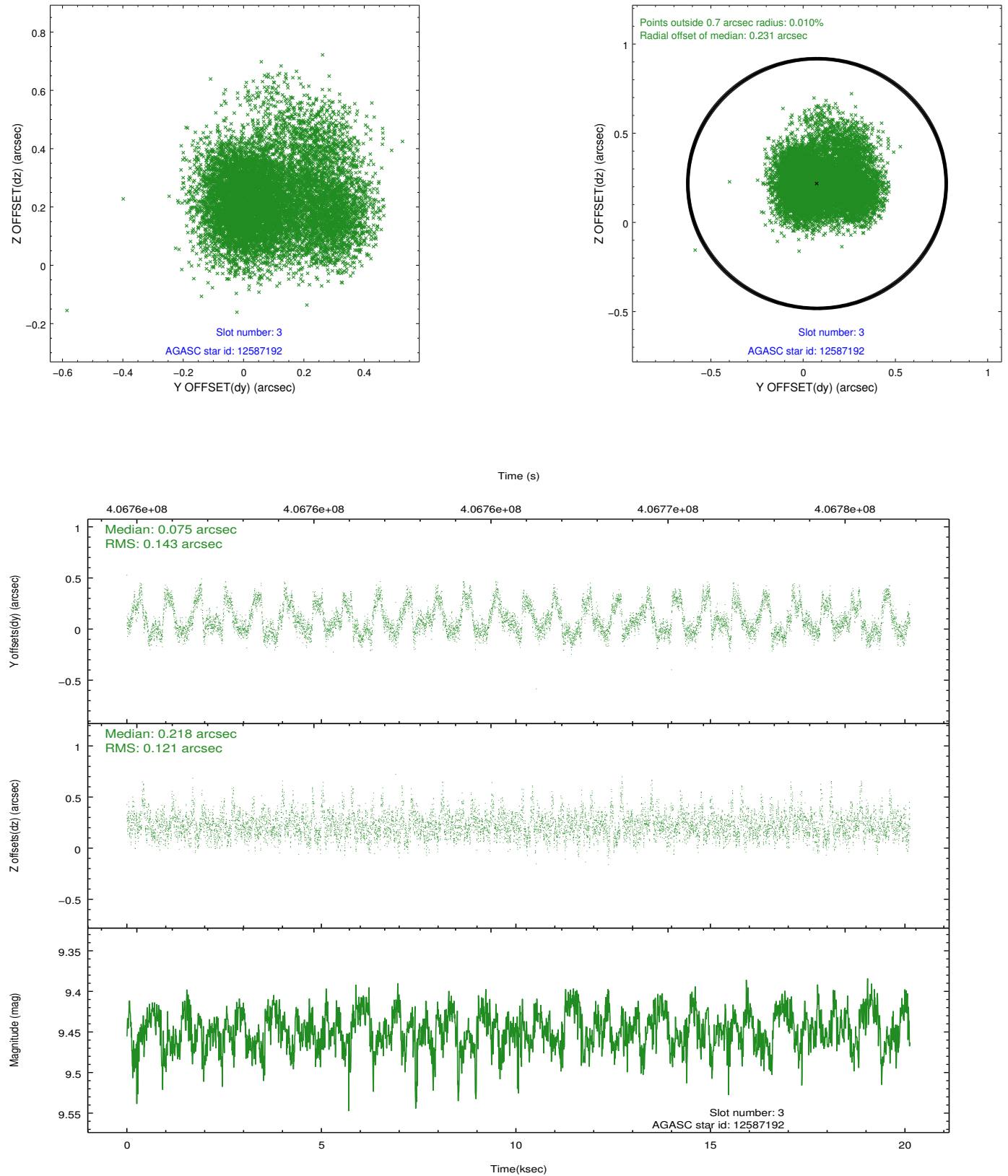


### Slot Statistics

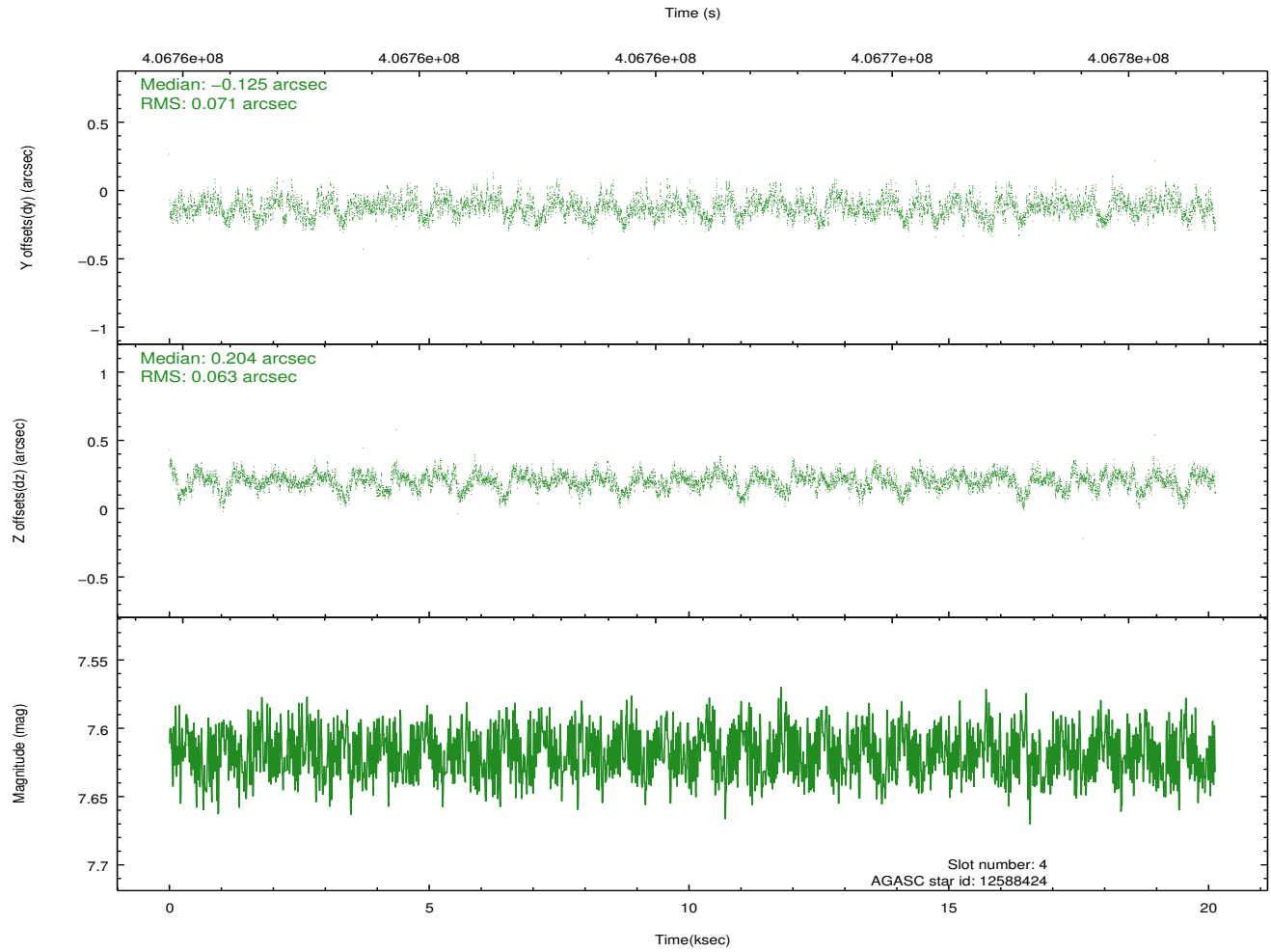
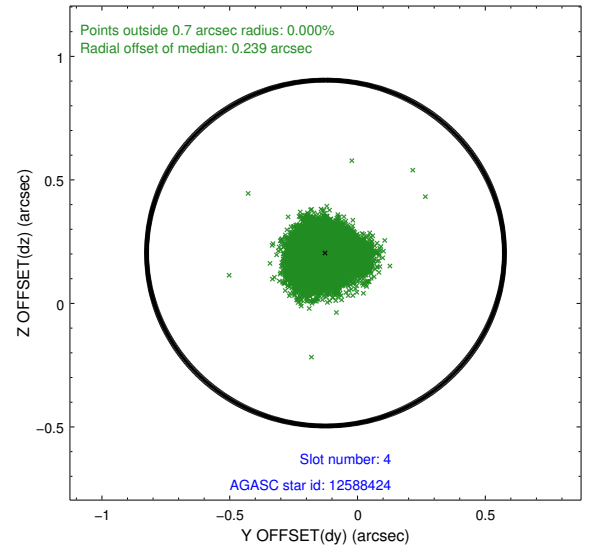
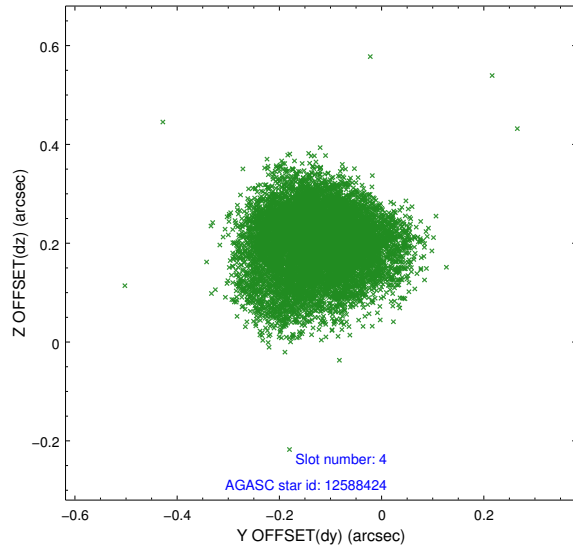
slot	status	id	mag	n_pts	med_dy	med_dz	dr1	dr2	ra	dec	mean_y	mean_z
0	FID	HRC-S-1	7.05	4909	0.057	-0.203	0.029	0.046	0.000000	0.000000	-1173.57	-466.10
1	FID	HRC-S-2	7.02	4909	0.208	-0.104	0.013	0.019	0.000000	0.000000	1226.02	-458.72
2	FID	HRC-S-3	7.05	4909	0.122	0.005	0.032	0.046	0.000000	0.000000	-1175.98	563.55
3	GUIDE	12587192	9.45	9798	0.075	0.218	0.201	0.323	72.735424	6.459582	-589.89	-1892.60
4	GUIDE	12588424	7.62	9819	-0.125	0.204	0.102	0.164	72.572085	6.949919	311.29	-265.69
5	GUIDE	12589136	9.44	9752	0.125	-0.218	0.150	0.245	71.951678	7.203256	-518.66	1982.27
6	GUIDE	12720136	9.09	9776	0.076	-0.045	0.153	0.259	73.348538	6.962593	2227.20	-2273.26
7	GUIDE	89527880	8.83	9815	-0.170	-0.162	0.094	0.156	72.497187	7.679234	2060.95	1709.62

## 2.4 Star Slots

### 2.4.1 Slot 3

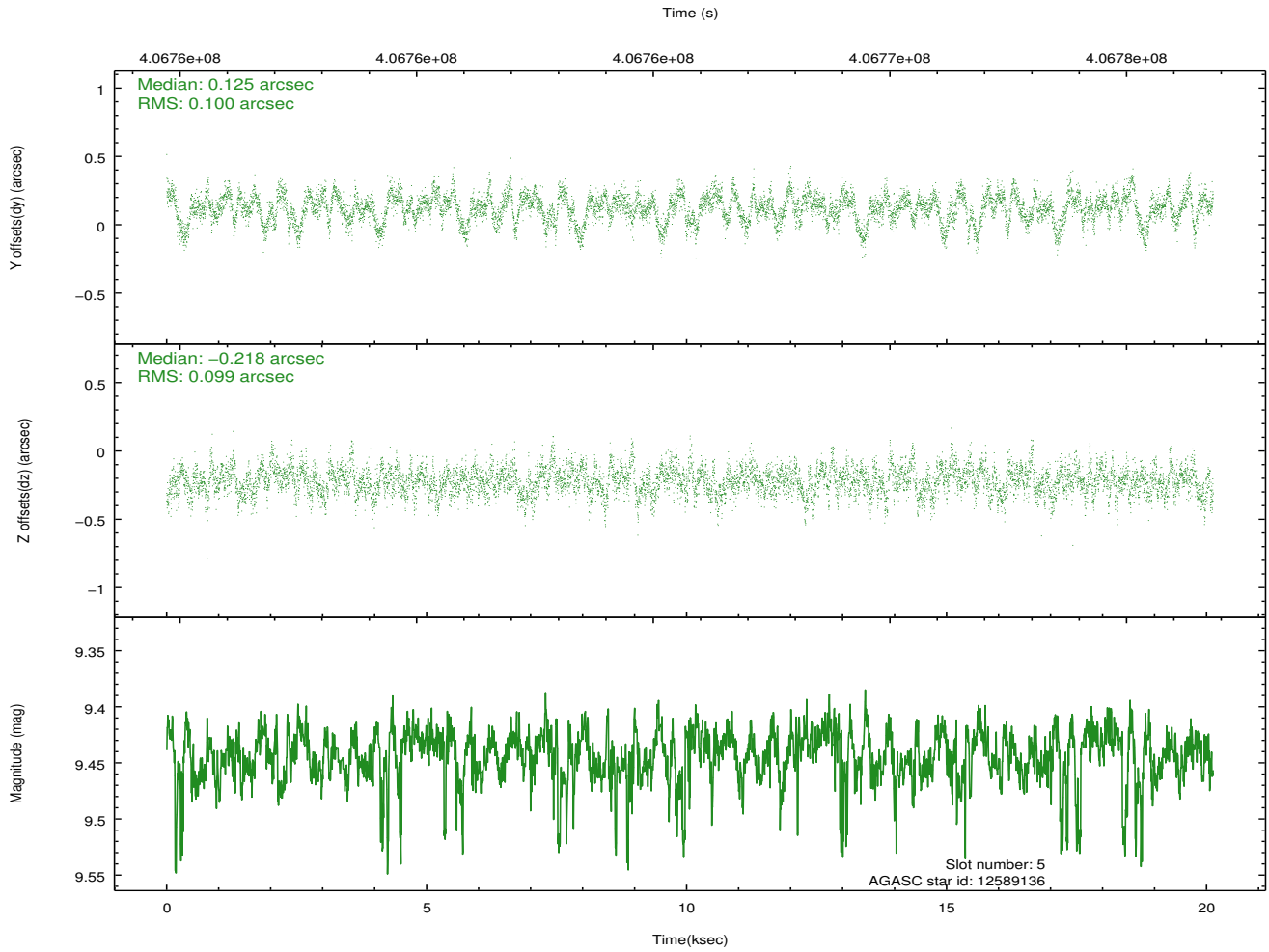
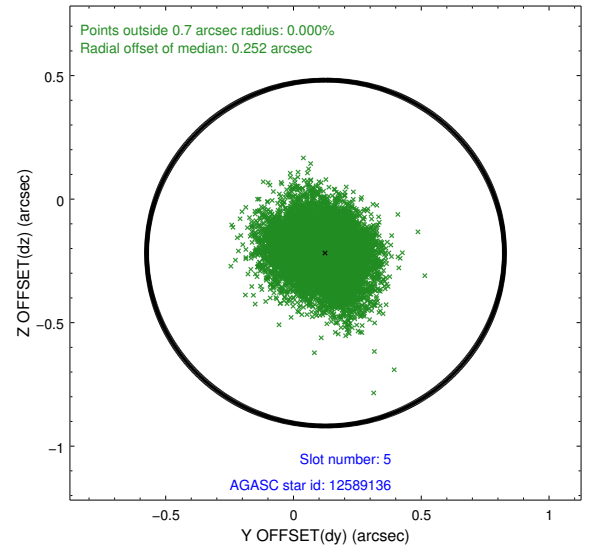
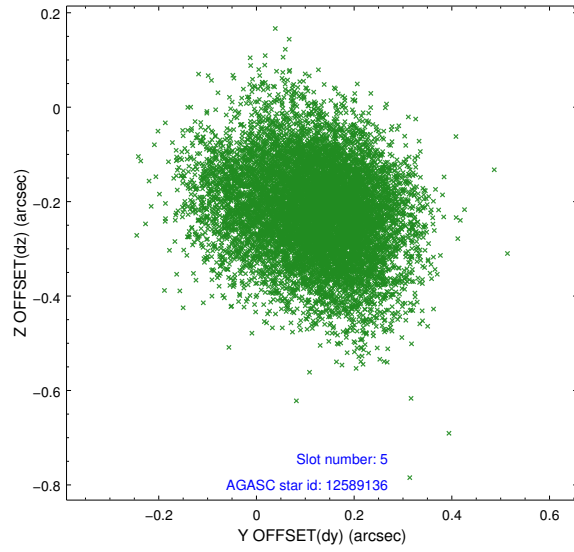


## 2.4.2 Slot 4

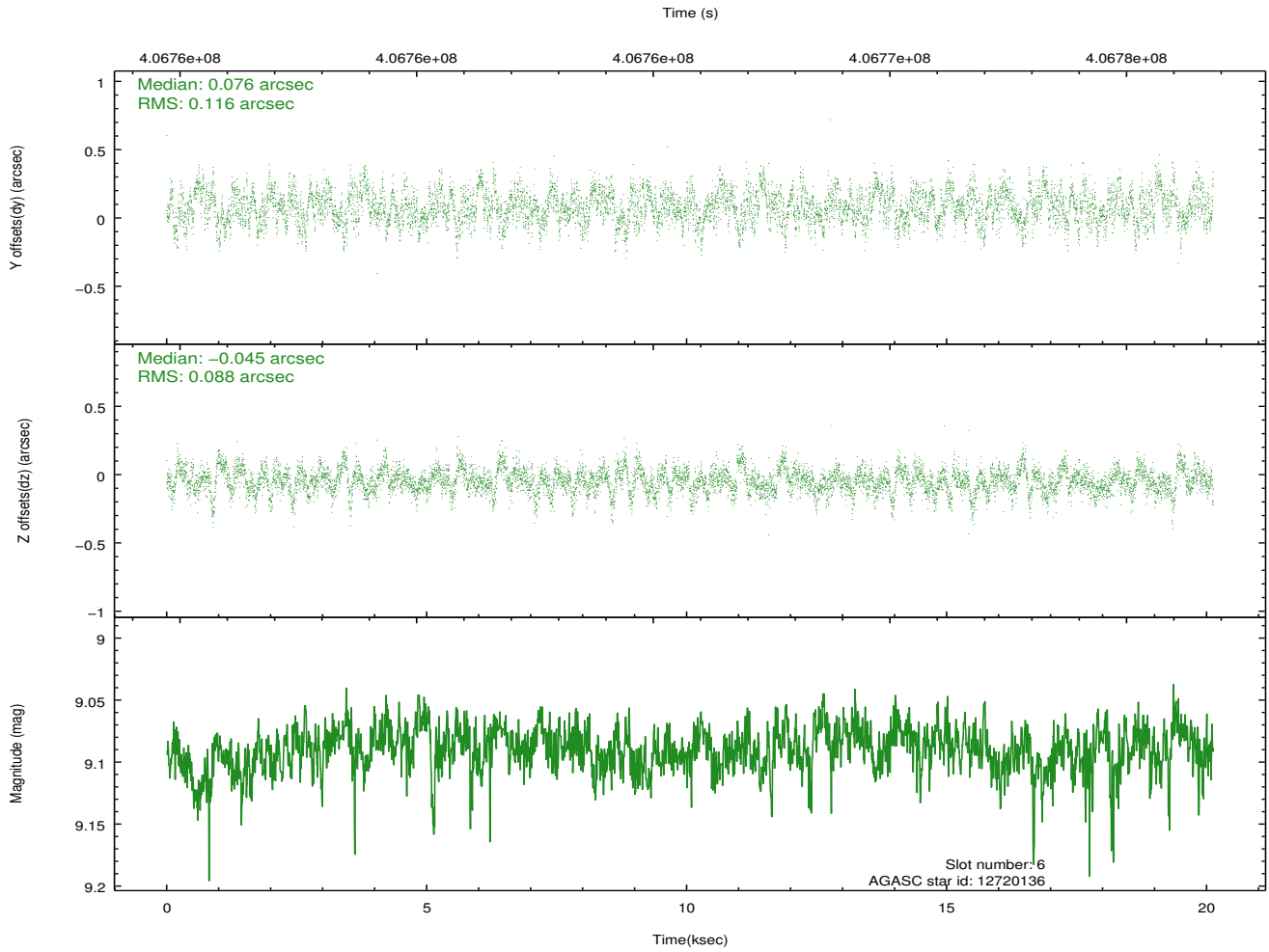
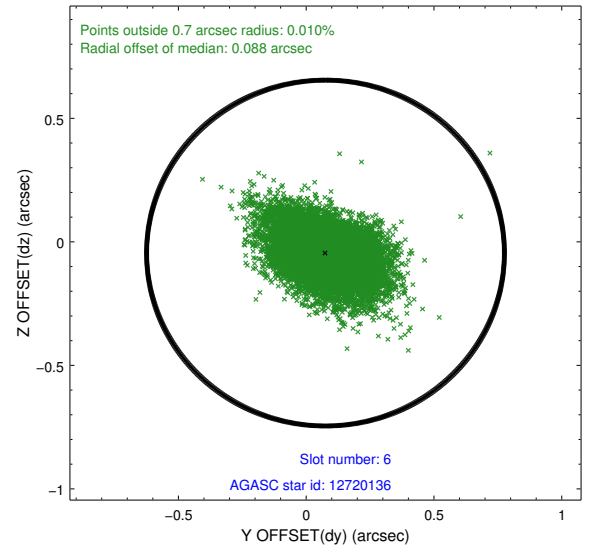
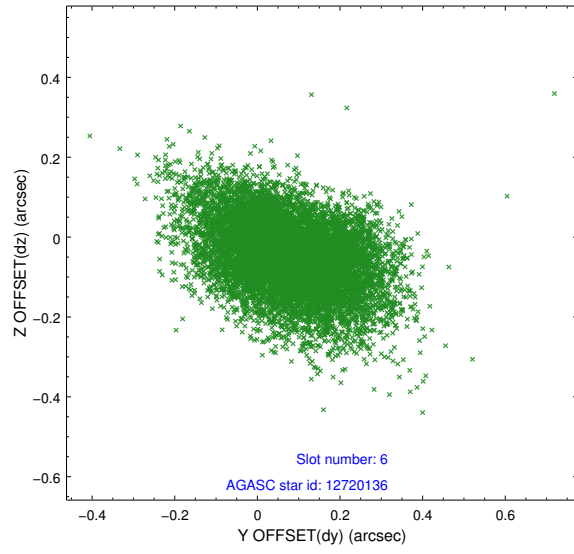




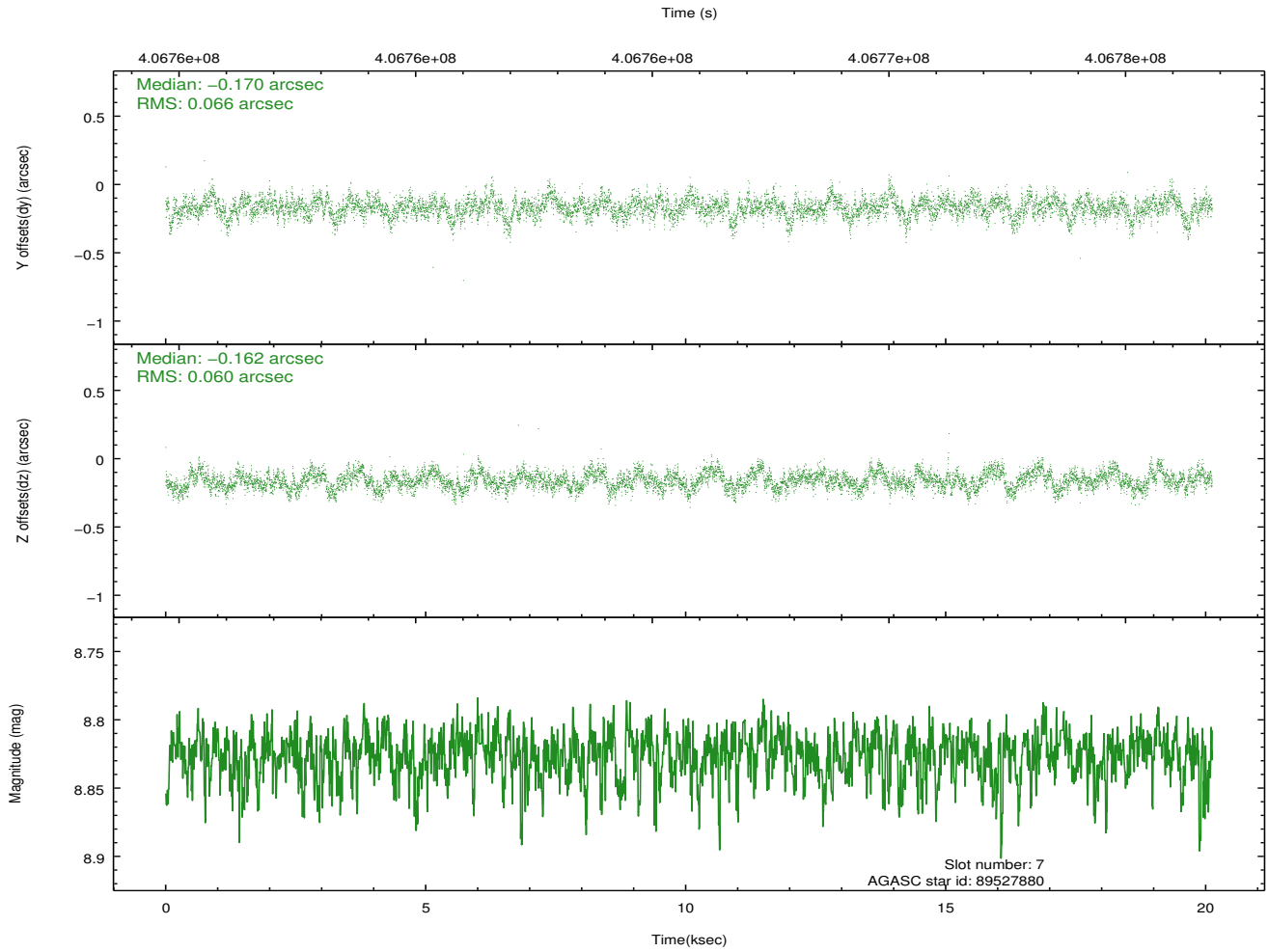
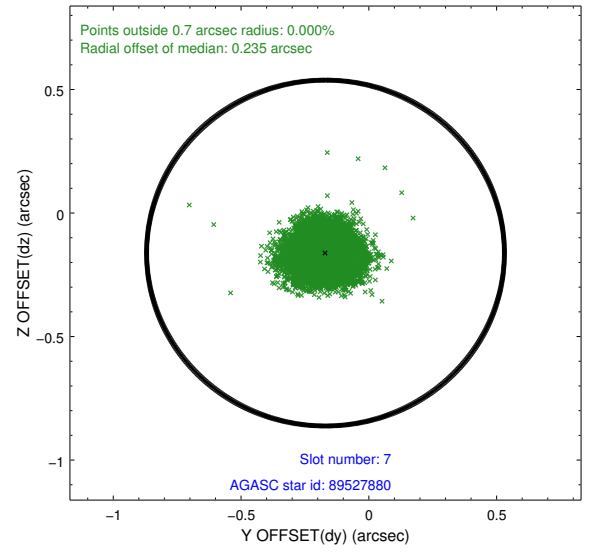
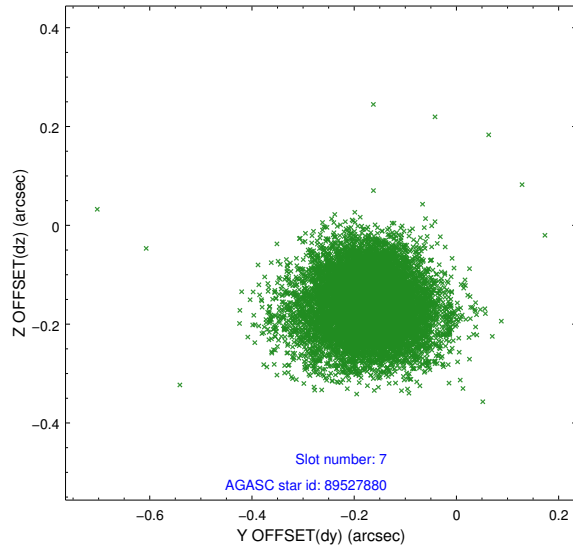
### 2.4.3 Slot 5



## 2.4.4 Slot 6

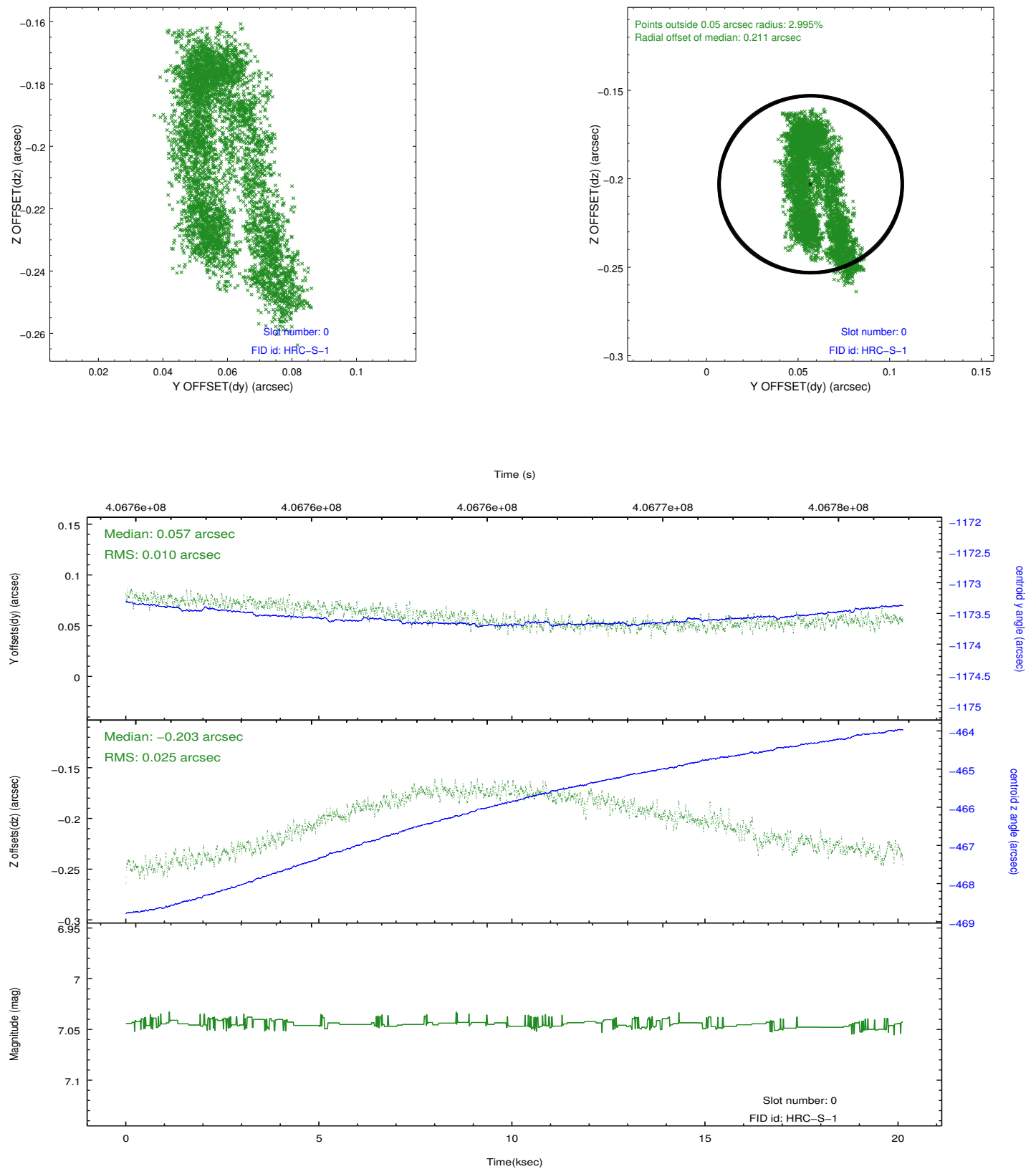


## 2.4.5 Slot 7

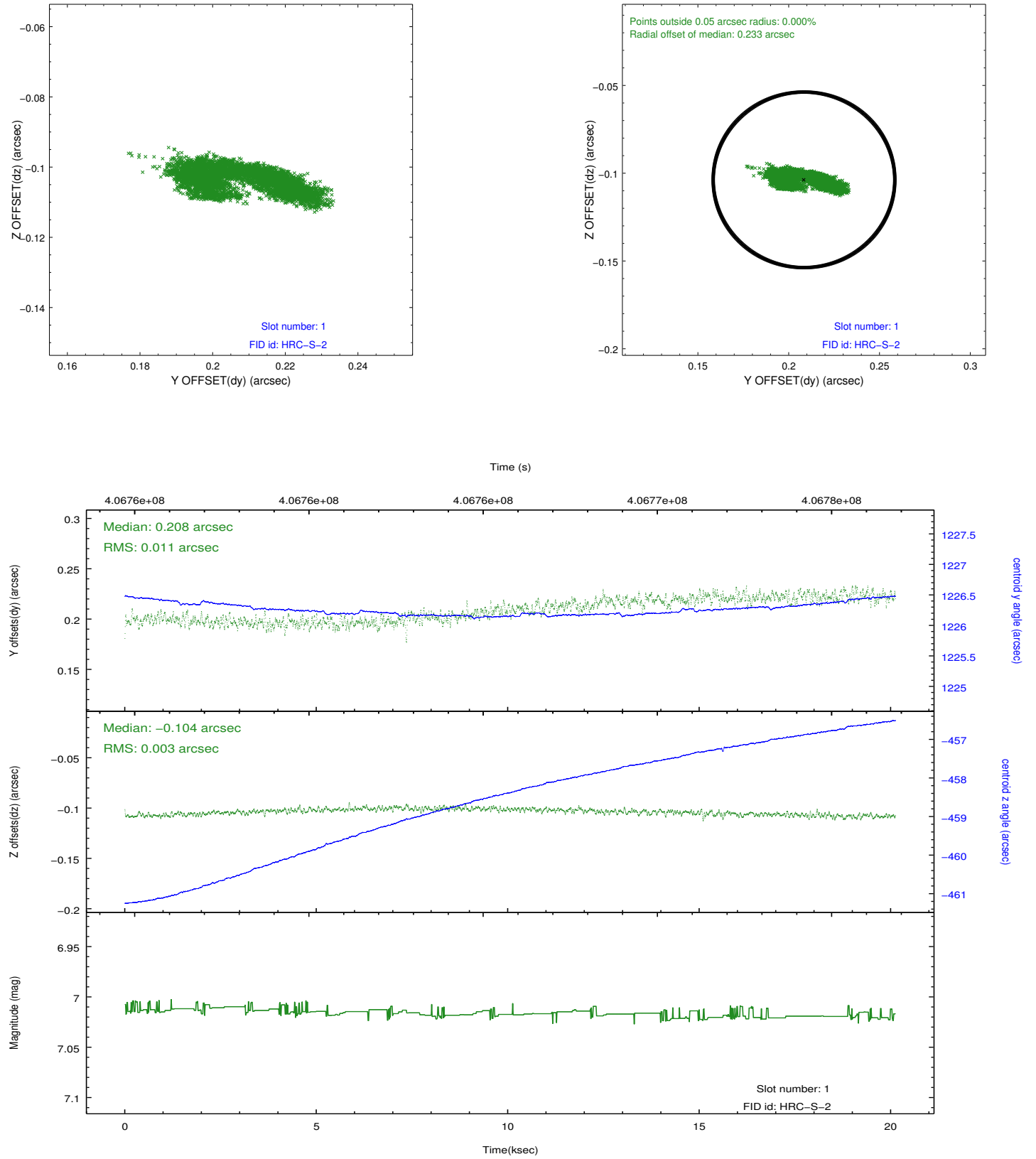


## 2.5 FID Slots

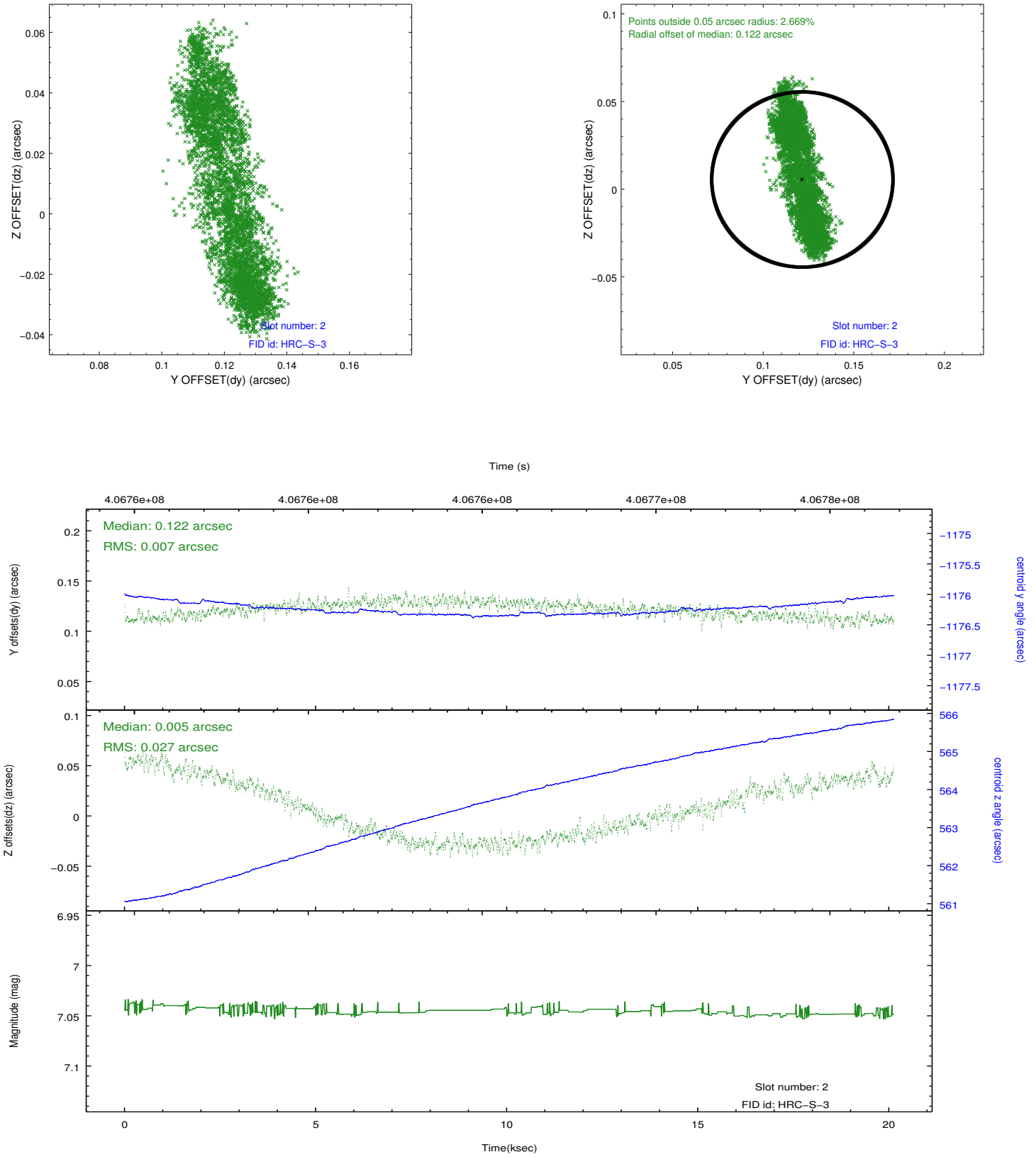
### 2.5.1 Slot 0



## 2.5.2 Slot 1

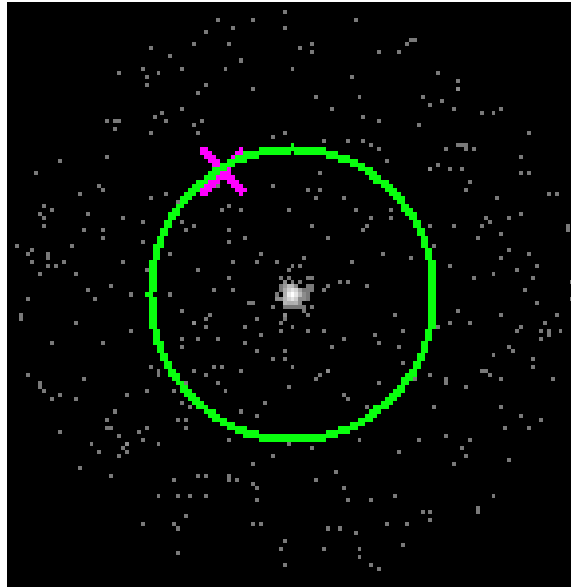


### 2.5.3 Slot 2

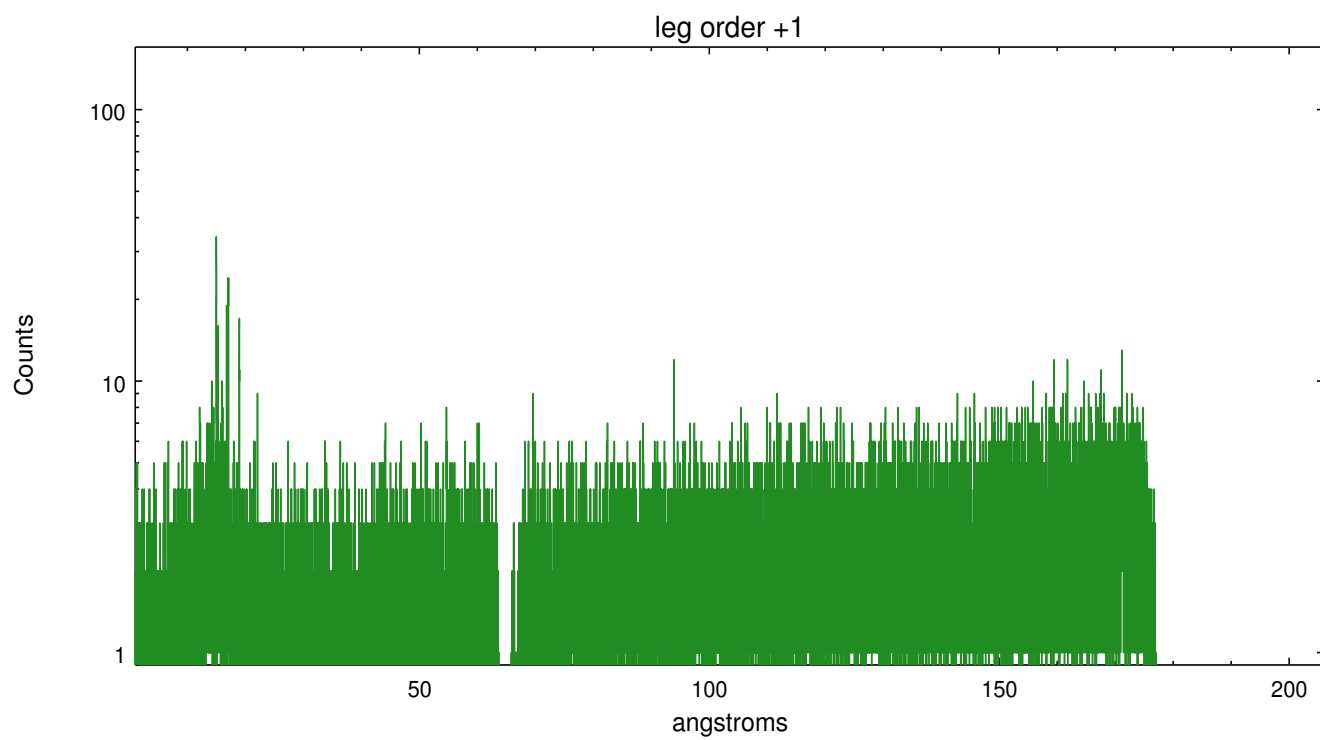
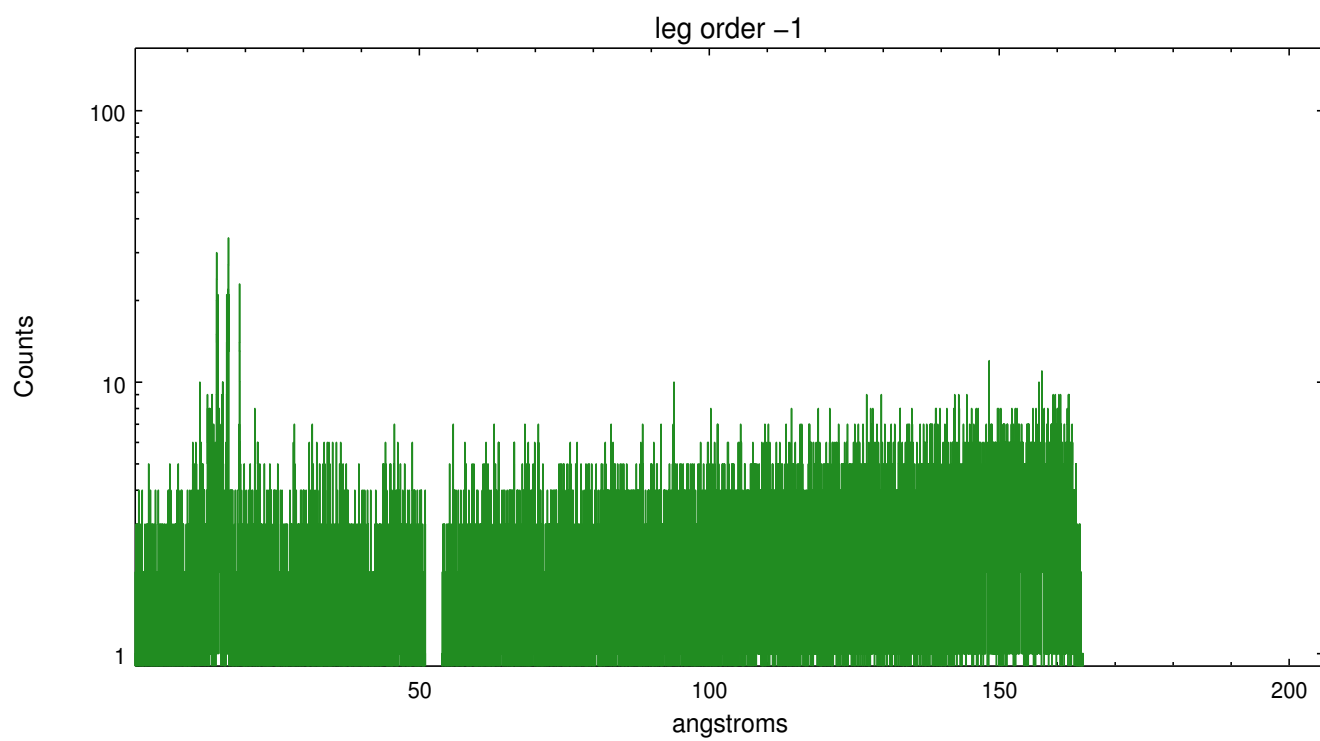


## 3 Gratings

### 3.1 LETG Arm



LETG Zero Order





## A Summary

### A.1 Status

V&V Scientist	Joy Nichols
V&V Date (YYYY-MM-DD)	2012.07.19
V&V Edition	1
V&V Disposition and Status	OK
V&V Charge Time	20.125876037776

### A.2 Comments