

V&V Reference Report

L2 ASCDS Version : 8.4.3

Observation 12934 - L2 Version 3
Chandra X-Ray Center

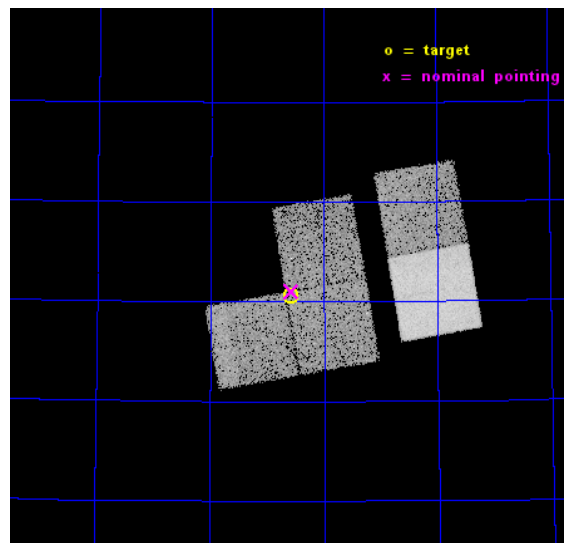
L2 Processing Date : Oct 30 2014

Contents

1	Front	2
2	OBI	3
2.1	OBI	3
2.1.1	Images	3
2.1.2	Bias	3
2.1.3	Parameters	4
2.1.4	Events	4
2.2	Compared Parameters	5
2.3	Aspect	6
2.4	Star Slots	9
2.4.1	Slot 3	9
2.4.2	Slot 4	10
2.4.3	Slot 5	11
2.4.4	Slot 6	12
2.4.5	Slot 7	13
2.5	FID Slots	14
2.5.1	Slot 0	14
2.5.2	Slot 1	15
2.5.3	Slot 2	16
A	Summary	17
A.1	Status	17
A.2	Comments	17

1 Front

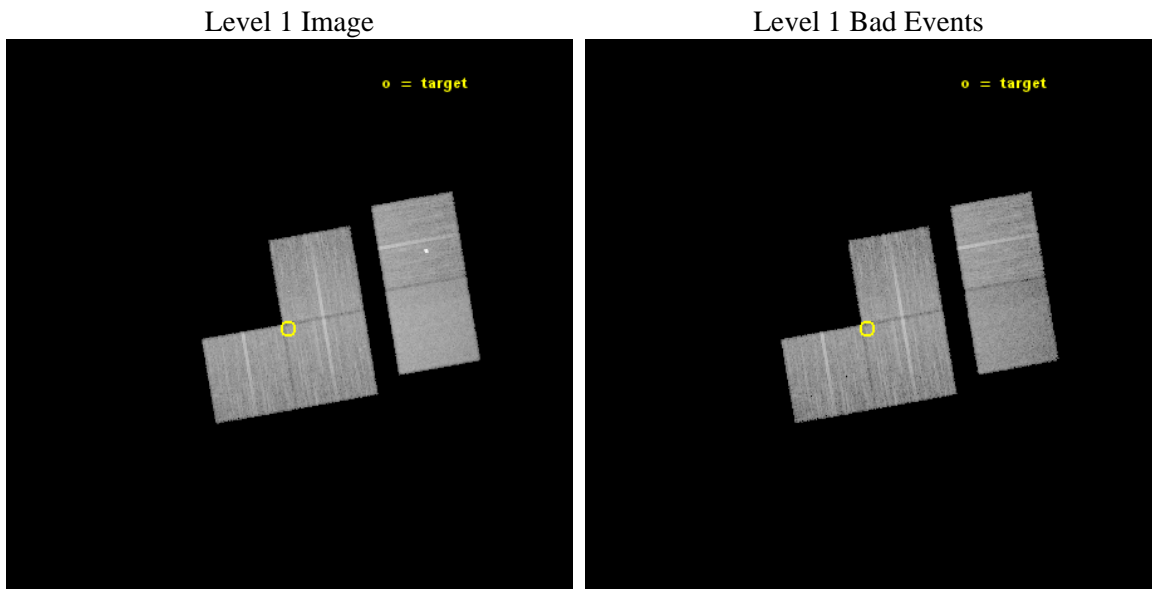
seq_num	900966	Sequence number
obs_id	12934	Observation id
title	Filling the 15 micron Gap: Search for Compton-thick Accretion with Chandra and AKARI in the NEP Deep Field	Proposal title
observer	Dr. Mirko Krumpe	Principal investigator
object	AKARI-NEP-Deep Field	Source name
dtcycle	0	
cycle	P	events from which exps? Prim/Second/Both
ra_targ	269.14583	Observer's specified target RA [deg]
dec_targ	66.675833	Observer's specified target Dec [deg]
ra_nom	269.14314126179	Nominal RA [deg]
dec_nom	66.68388705974	Nominal Dec [deg]
roll_nom	80.111182662815	Nominal Roll [deg]
revision	3	Processing version of data
ontime	15052.799943984	Sum of GTIs [s]
livetime	14862.192327385	Livetime [s]
ontime0	0.0	Sum of GTIs [s]
ontime1	15052.799943984	Sum of GTIs [s]
ontime2	15049.55894357	Sum of GTIs [s]
ontime3	15052.799943984	Sum of GTIs [s]
ontime6	15052.799943984	Sum of GTIs [s]
ontime7	15052.799943984	Sum of GTIs [s]
l2events	96955	Number of level 2 events



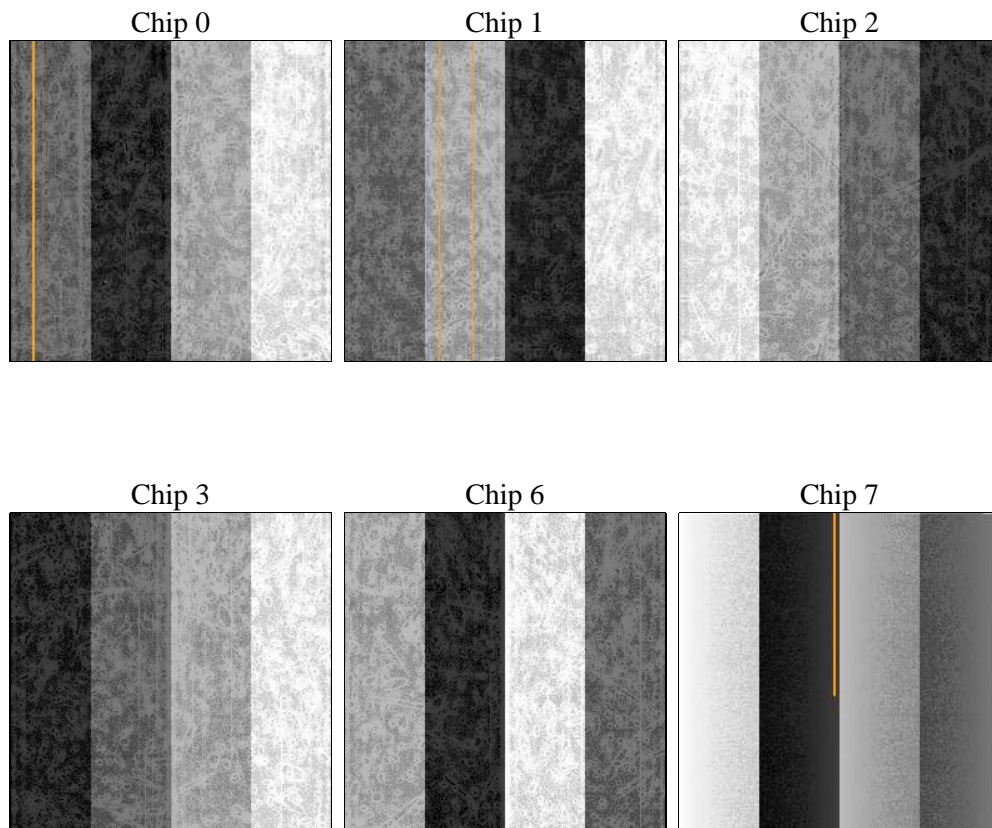
2 OBI

2.1 OBI

2.1.1 Images



2.1.2 Bias



2.1.3 Parameters

obi_num	1	Obi number	sched_exp_time	15000.000000	[s] Scheduled observation exposure time
ascdsver	10.3	Processing system revision	ontime	15052.799943984	Sum of GTIs [s]
caldsver	4.6.4	 	ontime0	0.0	Sum of GTIs [s]
date	2014-10-31T01:13:42	Date and time of file creation	ontime1	15052.799943984	Sum of GTIs [s]
revision	3	Processing version of data	ontime2	15049.55894357	Sum of GTIs [s]
			ontime3	15052.799943984	Sum of GTIs [s]
			ontime6	15052.799943984	Sum of GTIs [s]
			ontime7	15052.799943984	Sum of GTIs [s]
			l1events	548001	Number of level 1 events

2.1.4 Events

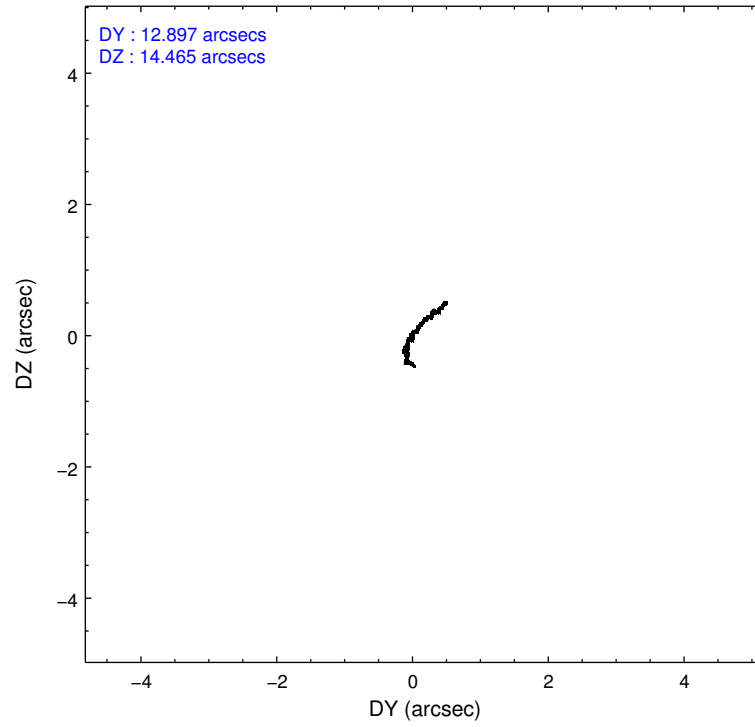
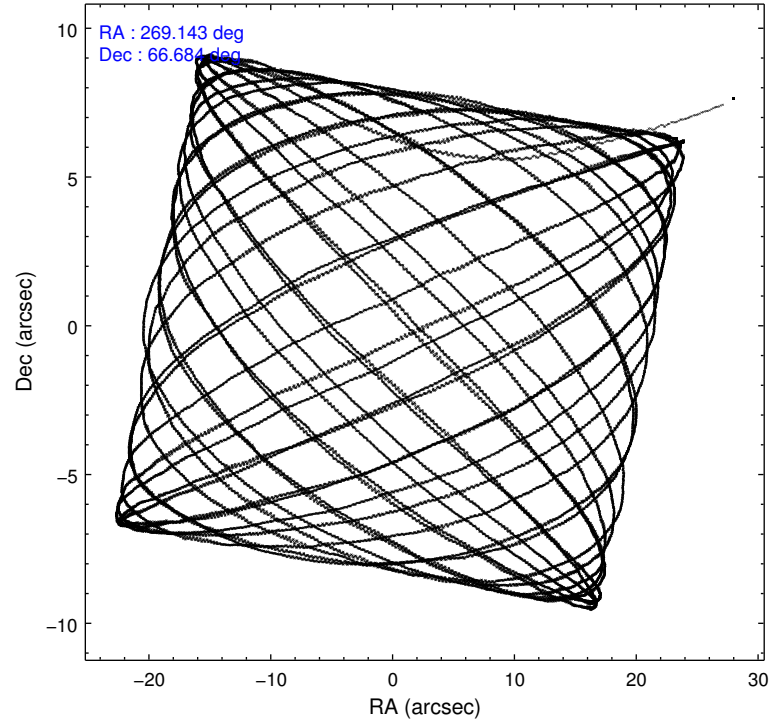
	ccd 0	ccd 1	ccd 2	ccd 3	ccd 6	ccd 7
level 1 events	0	98116	102562	102512	114722	130089
rejected events	0	85178	91193	91339	98135	71932
rejected %	0%	86%	88%	89%	85%	55%

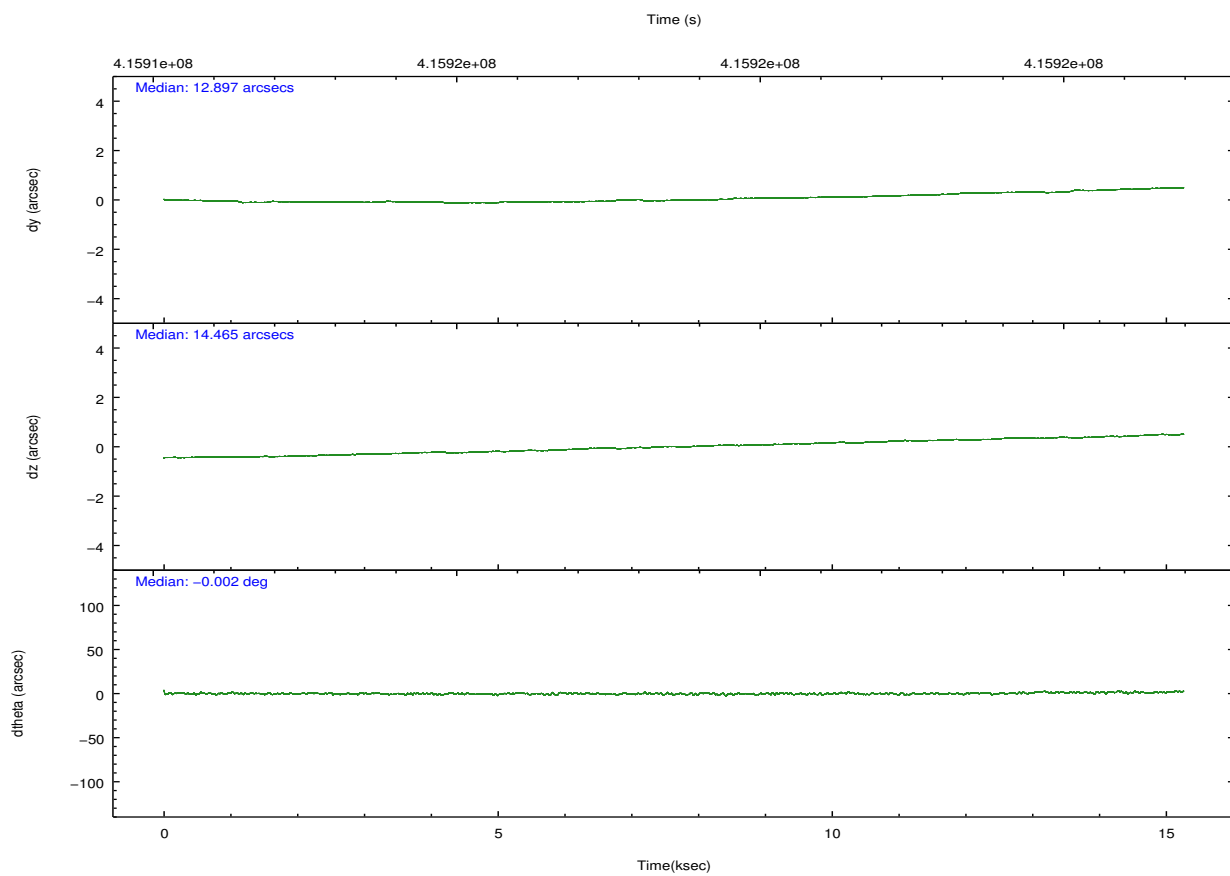
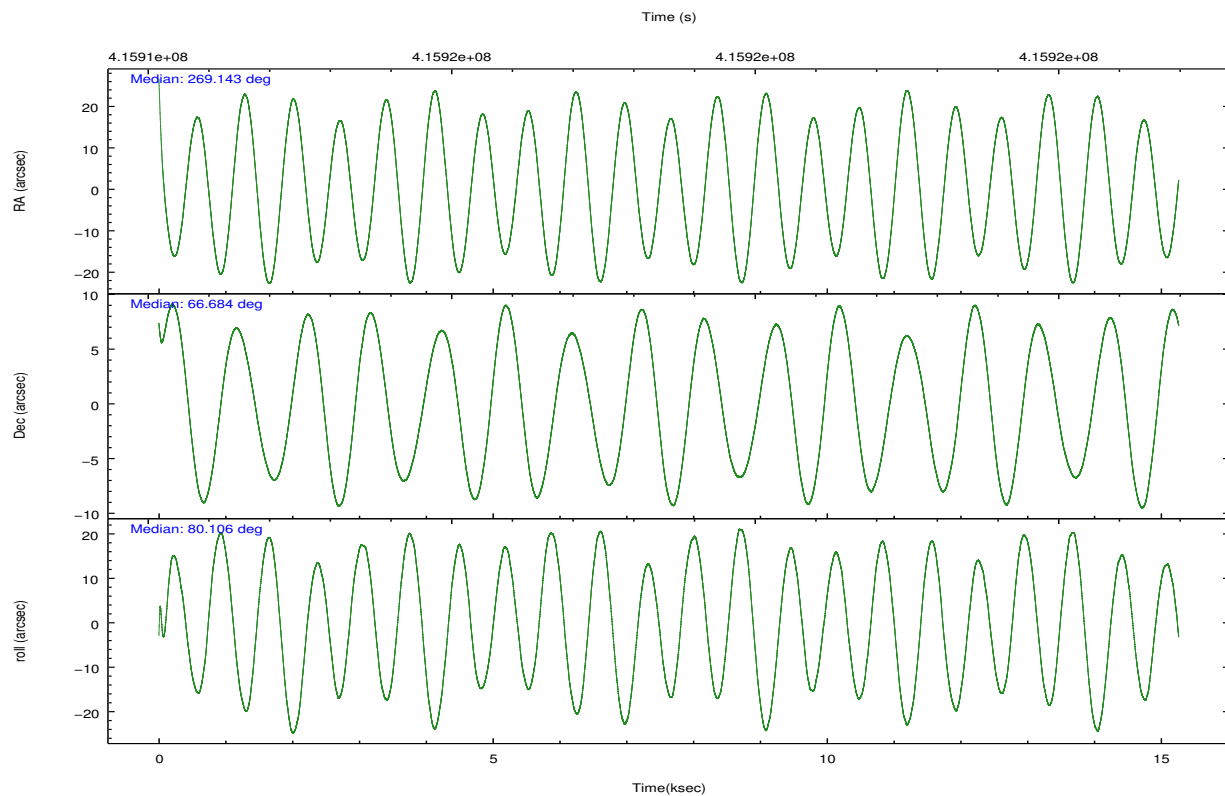
	ccd 0	ccd 1	ccd 2	ccd 3	ccd 6	ccd 7
grade 0 events	0	4538	4104	3975	4176	5212
	0%	4%	4%	3%	3%	4%
grade 1 events	0	57	70	68	73	165
	0%	0%	0%	0%	0%	0%
grade 2 events	0	3130	2701	2548	7239	12083
	0%	3%	2%	2%	6%	9%
grade 3 events	0	1251	1175	1204	1274	5159
	0%	1%	1%	1%	1%	3%
grade 4 events	0	1300	1152	1182	1198	5134
	0%	1%	1%	1%	1%	3%
grade 5 events	0	4457	4041	4940	4983	13641
	0%	4%	3%	4%	4%	10%
grade 6 events	0	2722	2239	2265	2704	30579
	0%	2%	2%	2%	2%	23%
grade 7 events	0	80661	87080	86330	93075	58116
	0%	82%	84%	84%	81%	44%

2.2 Compared Parameters

Parameter	Planned	Actual	Parameter	Planned	Actual
Instrument	ACIS	ACIS	Obspar format version number	7	7
Detector	ACIS-012367	ACIS-012367	Obspar file type	PREDICTED	ACTUAL
Grating	NONE	NONE	Obspar update status	NONE	UPDATED
Data mode	VFAINT	VFAINT	CCD I0 on	Y	Y
Observation mode	POINTING	POINTING	CCD I1 on	Y	Y
[deg] Pointing RA	269.167332	269.1431412617879	CCD I2 on	Y	Y
[deg] Pointing Dec	66.658067	66.68388705973973	CCD I3 on	Y	Y
[deg] Pointing Roll	79.880263	80.11118266281535	CCD S0 on	N	N
[mm] SIM focus pos	-0.782348	-0.7809083437167272	CCD S1 on	N	N
[mm] SIM defocus	0	0.001439871863259334	CCD S2 on	O2	Y
[mm] SIM translation stage pos	-233.592463	-233.5874344608287	CCD S3 on	O1	Y
[mm] SIM translation stage offset	0	-0.005018542100998502	CCD S4 on	N	N
[s] Observation start time (MET)	415911203.184000	415910143.69156	CCD S5 on	N	N
Observation start date	2011-03-07T18:52:17	2011-03-07T18:35:43	Number of optional ACIS chips dropped	0	0
[s] Observation end time (MET)	415926203.184000	415926998.27994	On-chip summing requested	N	N
Observation end date	2011-03-07T23:02:17	2011-03-07T23:16:38	Subarray requested	NONE	NONE
Read mode	TIMED	TIMED	Alternating exposures requested	N	N
			[s] Primary exposure time	0.000000	3.2

2.3 Aspect



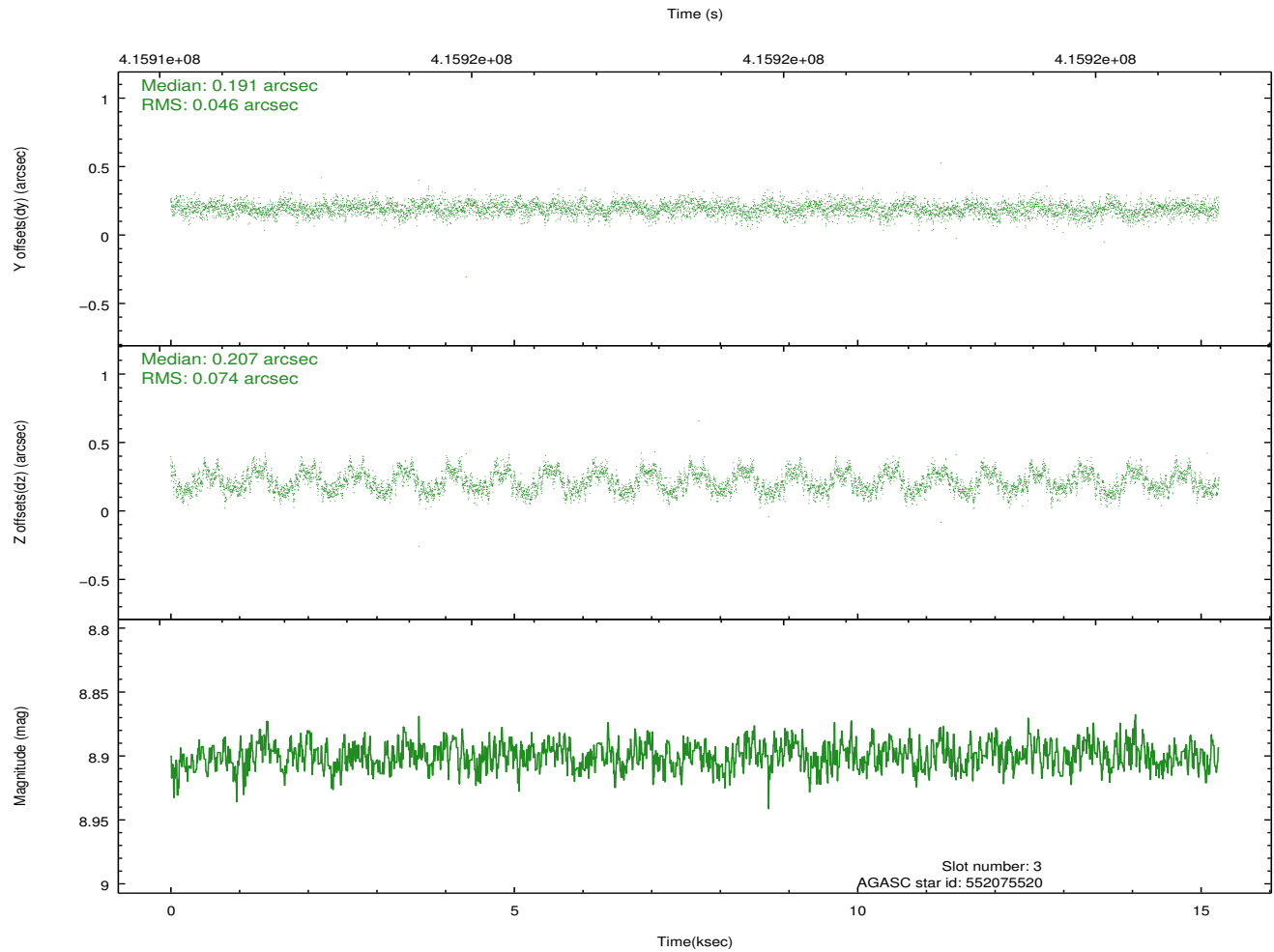
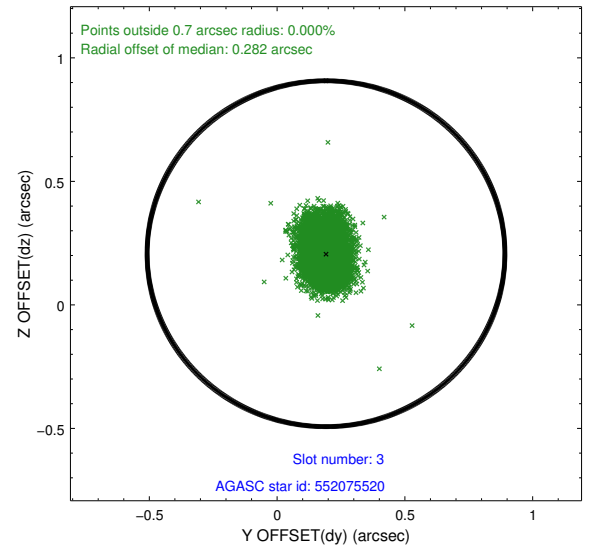
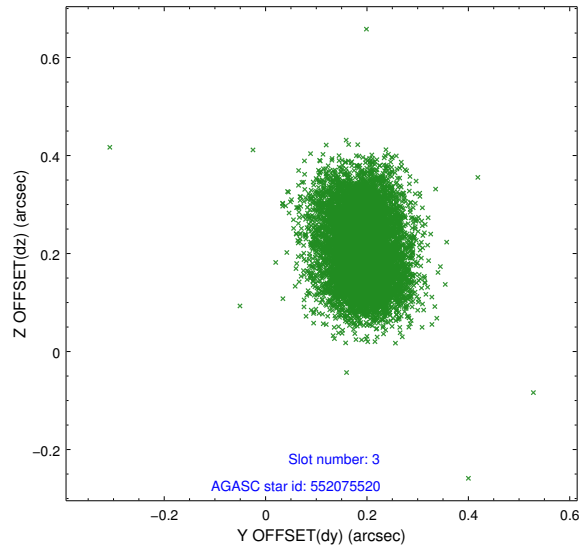


Slot Statistics

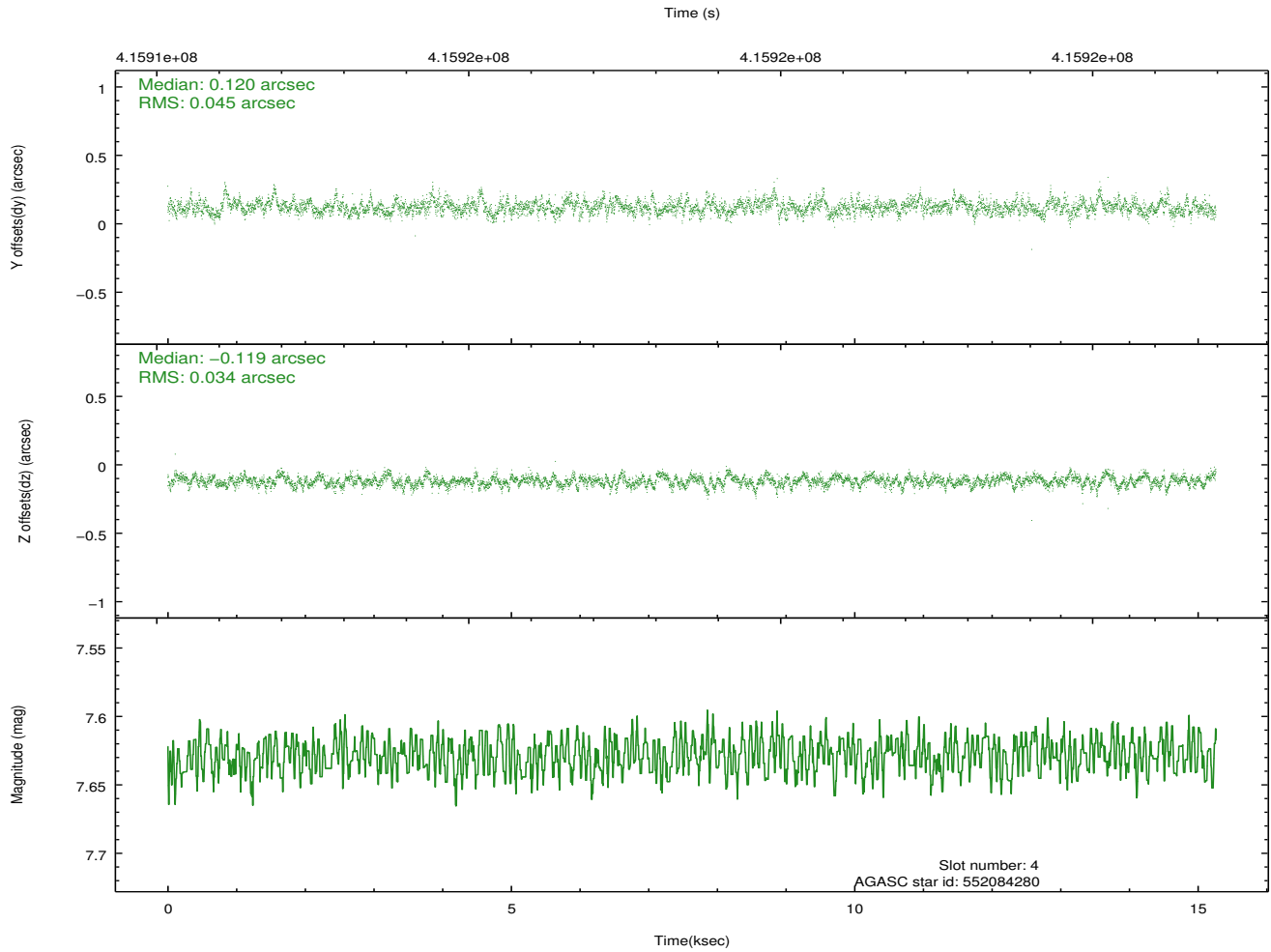
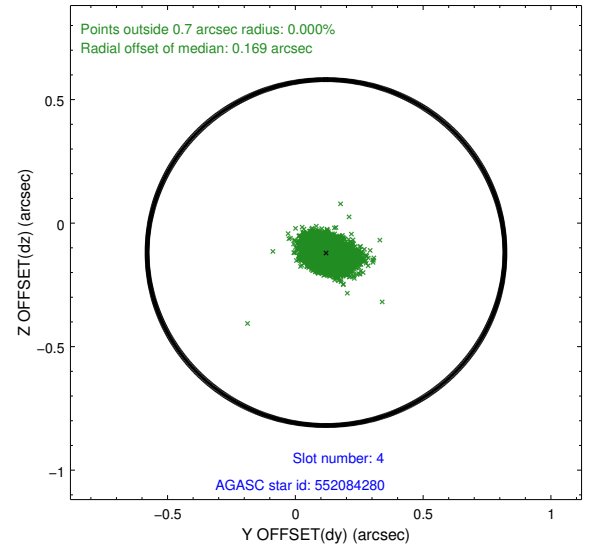
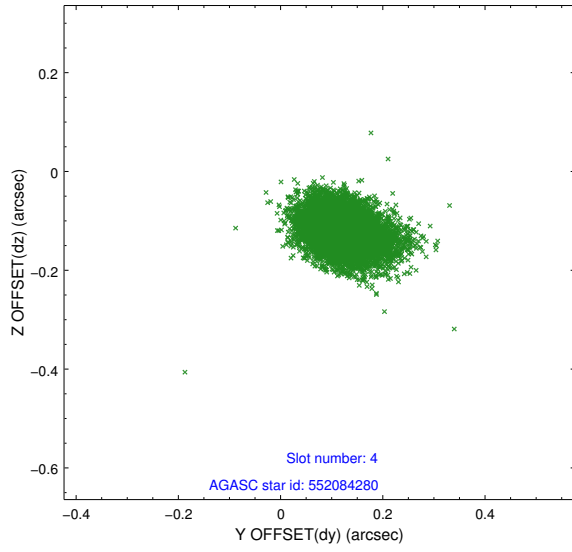
slot	status	used	id	mag	n_pts	med_dy	med_dz	dr1	dr2	ra	dec	mean_y	mean_z
0	FID		ACIS-I-1	7.12	3723	0.003	0.056	0.013	0.026	0.000000	0.000000	926.55	-837.99
1	FID		ACIS-I-2	7.02	3723	-0.111	-0.070	0.011	0.019	0.000000	0.000000	-767.49	-844.71
2	FID		ACIS-I-6	7.11	3723	0.018	0.081	0.014	0.021	0.000000	0.000000	392.05	1703.70
3	GUIDE	used	552075520	8.90	7438	0.191	0.207	0.094	0.147	269.430358	66.310622	-1163.60	-594.15
4	GUIDE	used	552084280	7.63	7444	0.120	-0.119	0.058	0.100	268.233478	66.419076	-1073.58	1174.25
5	GUIDE	used	552216648	9.76	7396	0.111	0.027	0.128	0.211	270.130141	67.075369	1726.07	-1062.79
6	GUIDE	used	552082392	9.74	7430	-0.261	-0.225	0.155	0.260	267.761612	66.950878	711.36	2139.20
7	GUIDE	used	552209520	9.82	7433	-0.159	0.121	0.188	0.315	270.790044	66.469989	-226.87	-2408.91

2.4 Star Slots

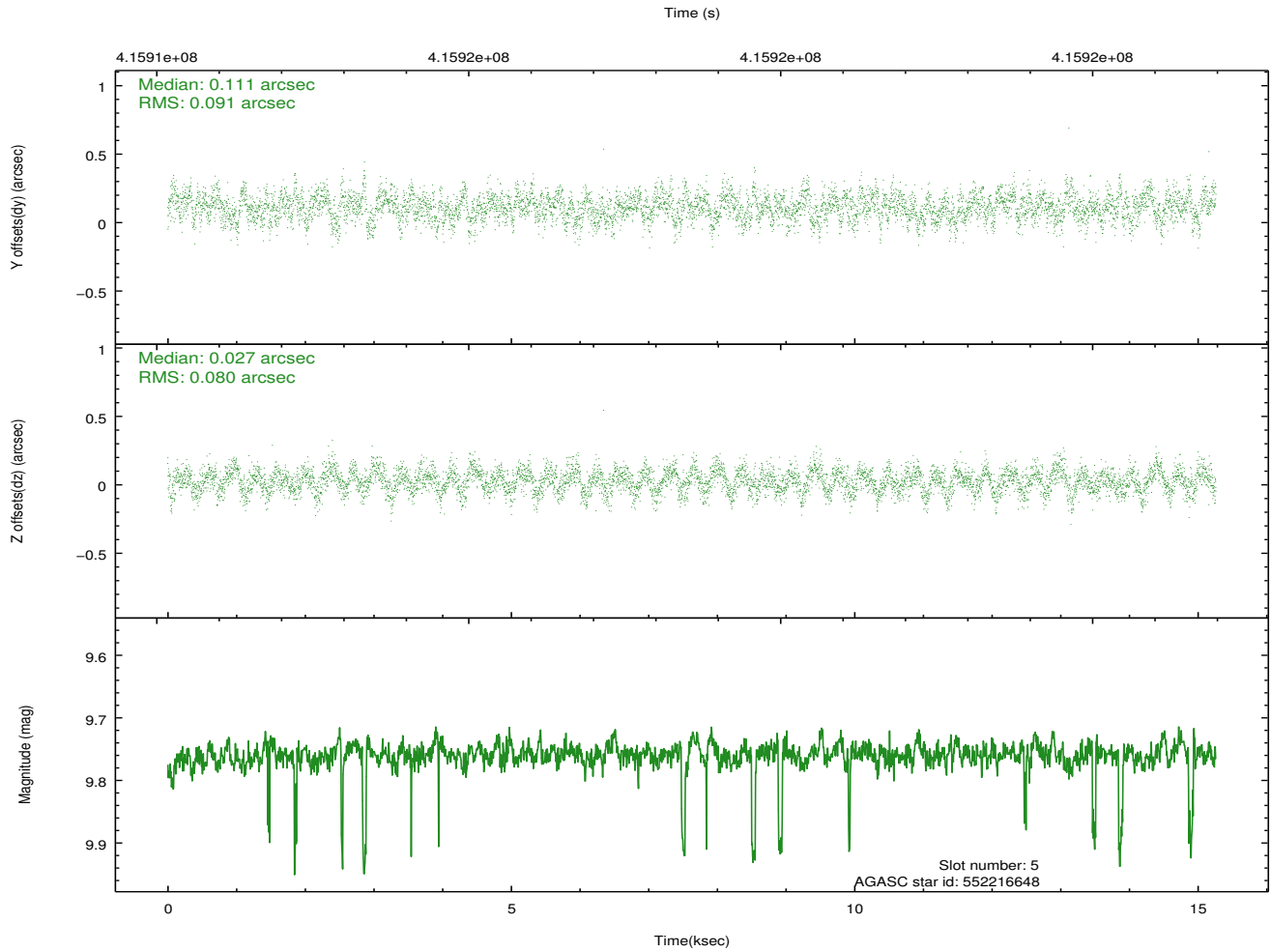
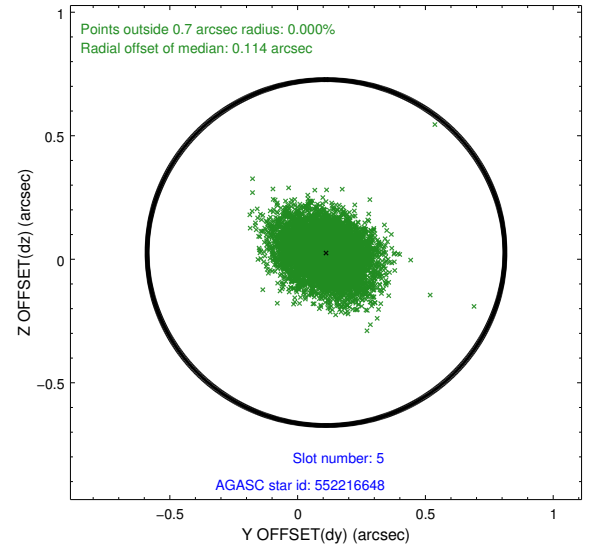
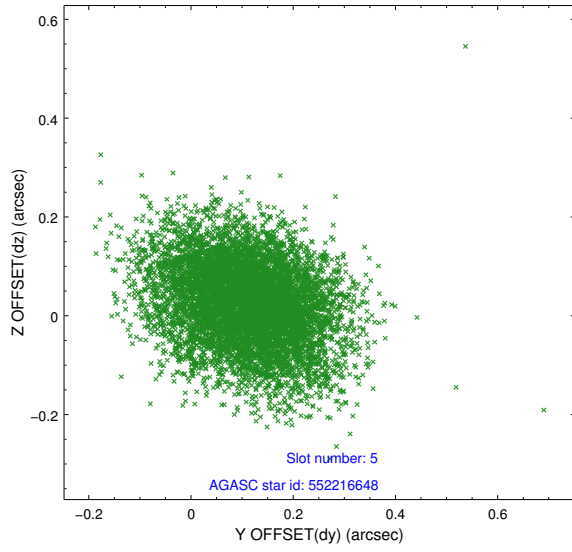
2.4.1 Slot 3



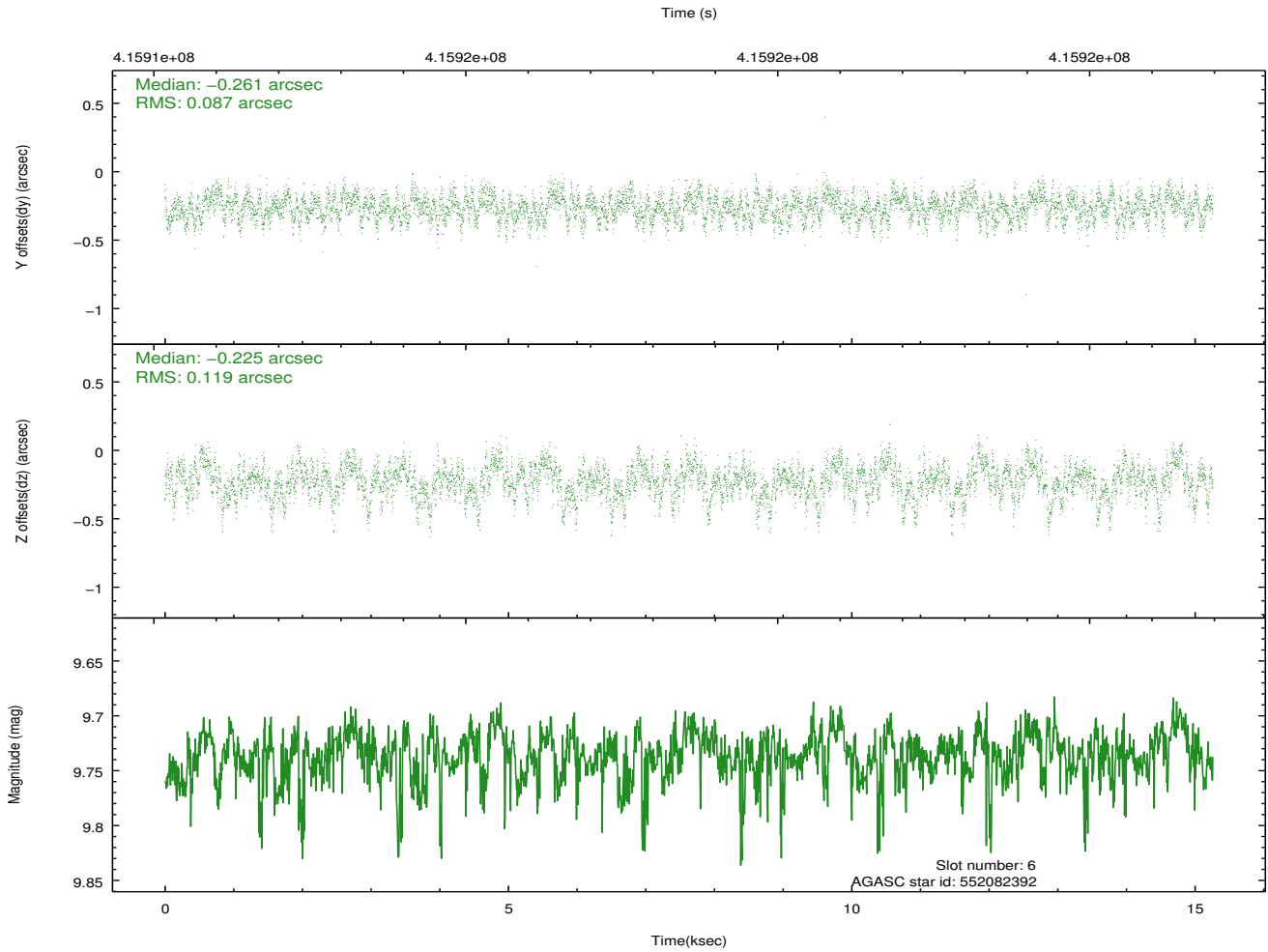
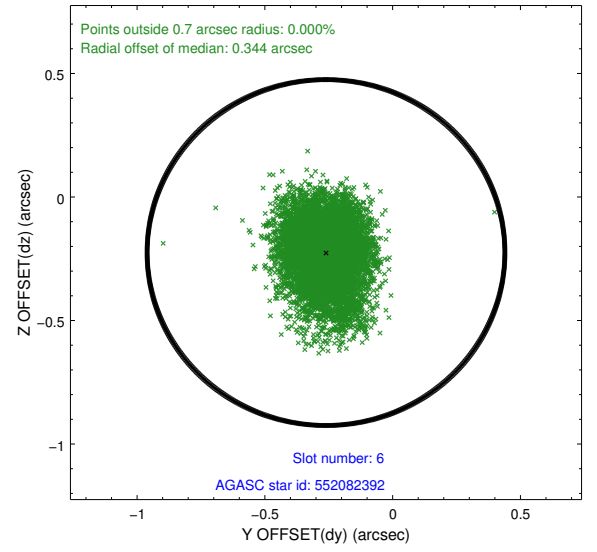
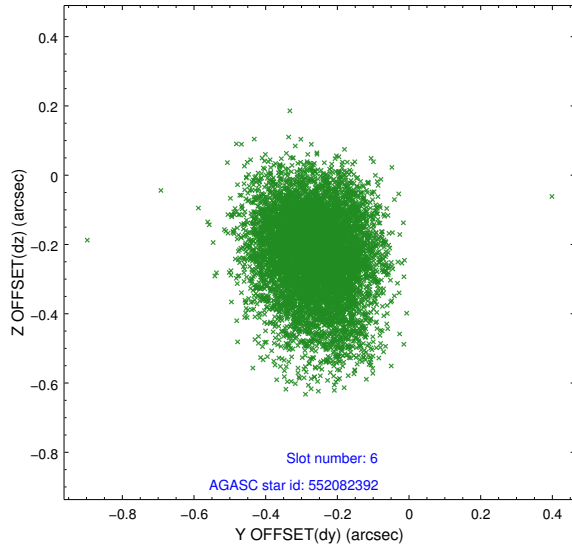
2.4.2 Slot 4



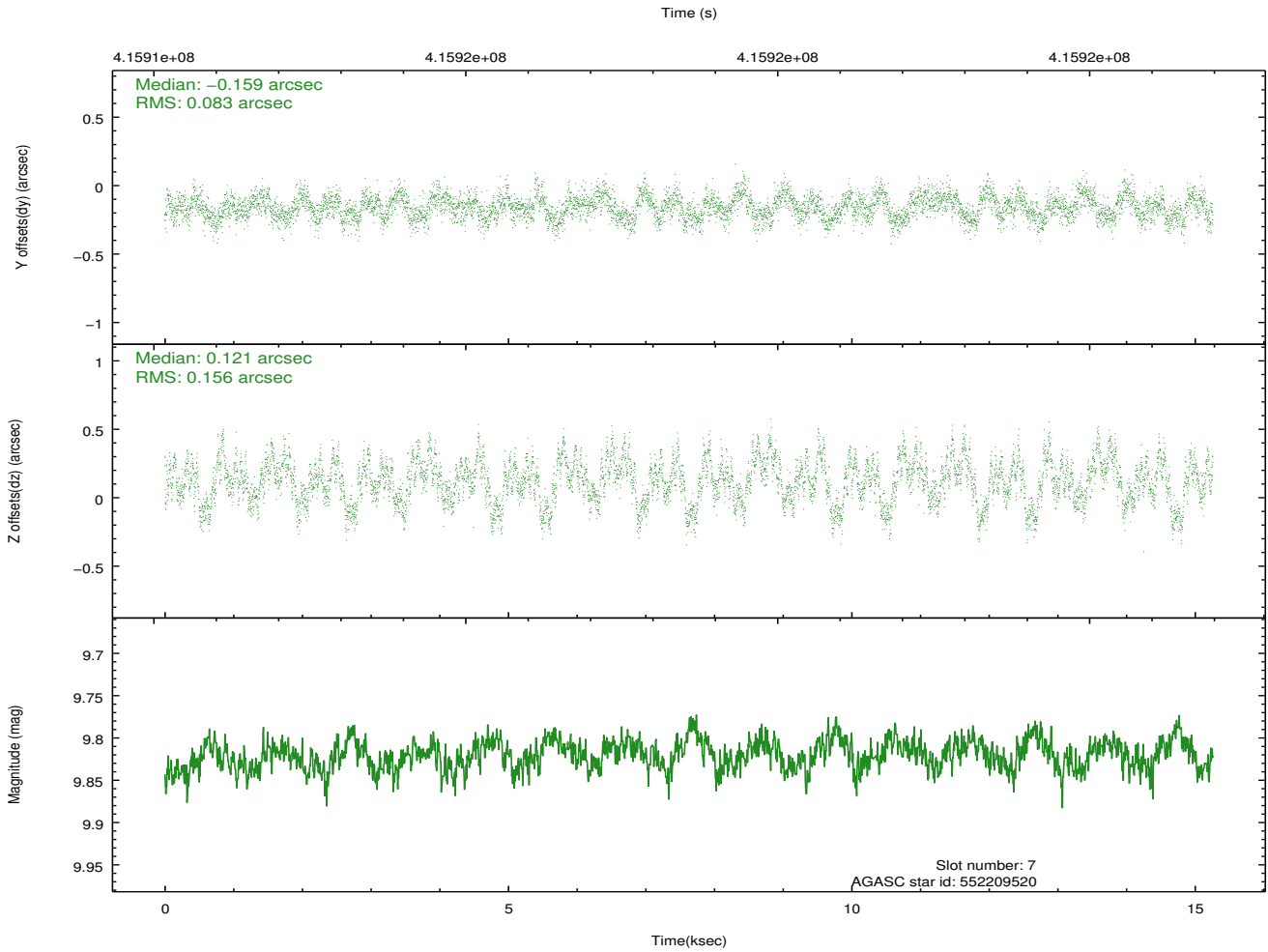
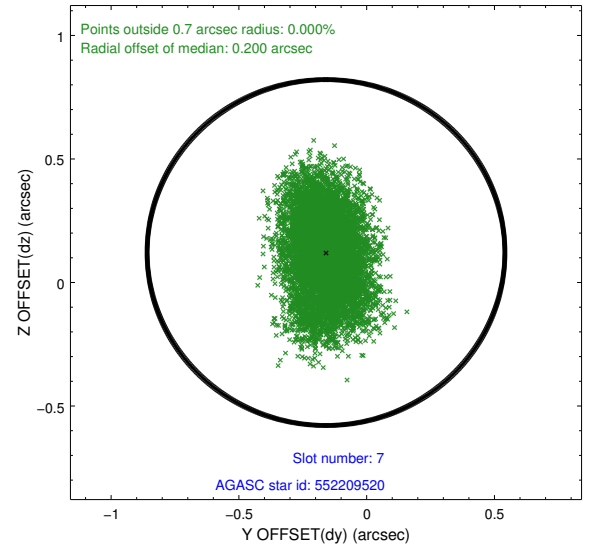
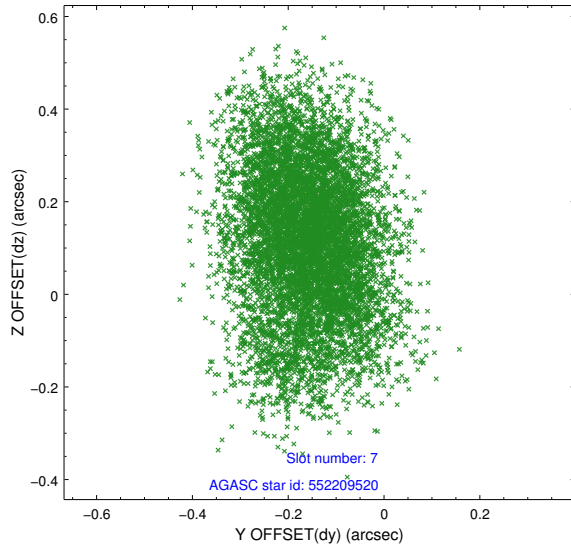
2.4.3 Slot 5



2.4.4 Slot 6

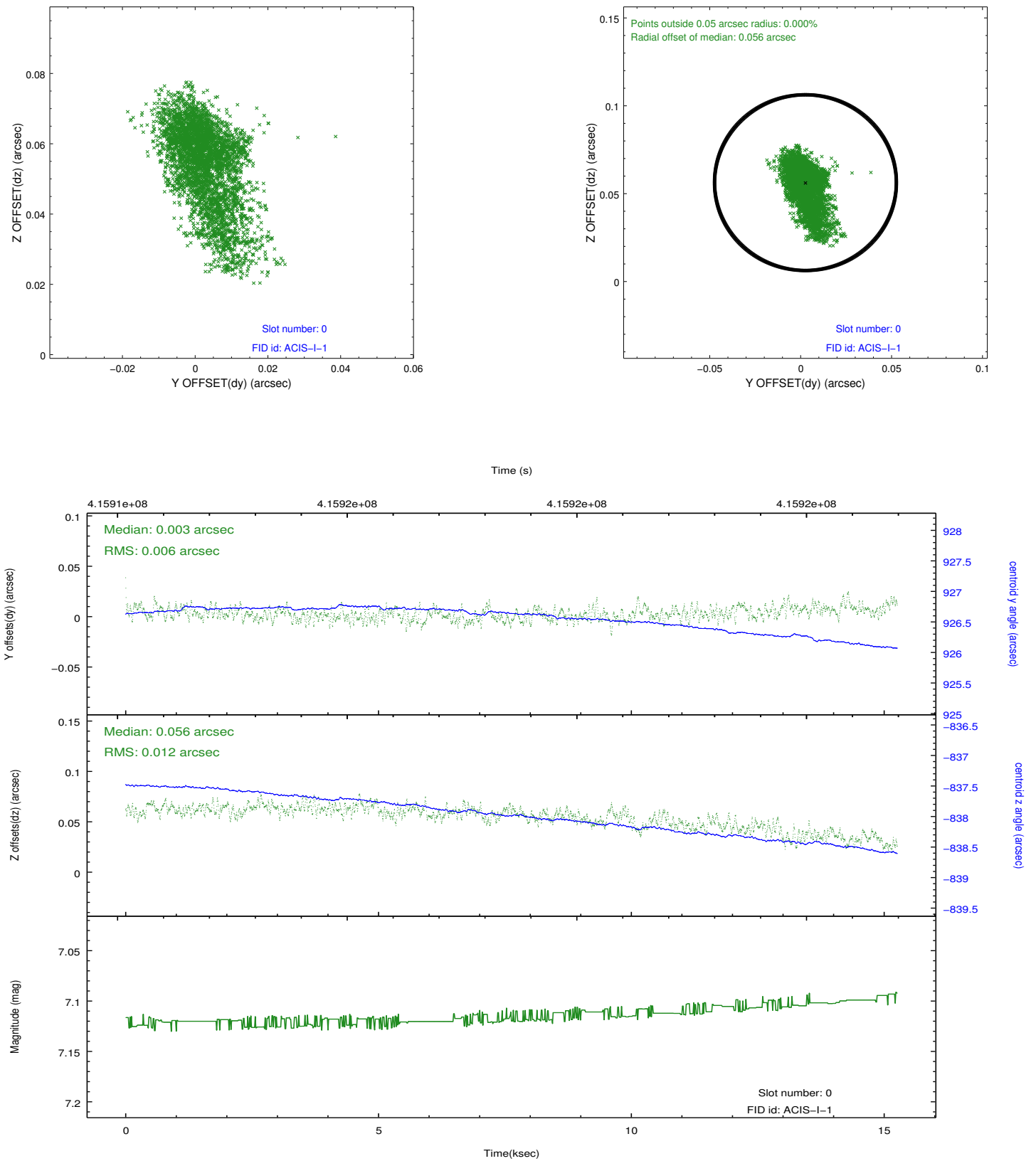


2.4.5 Slot 7

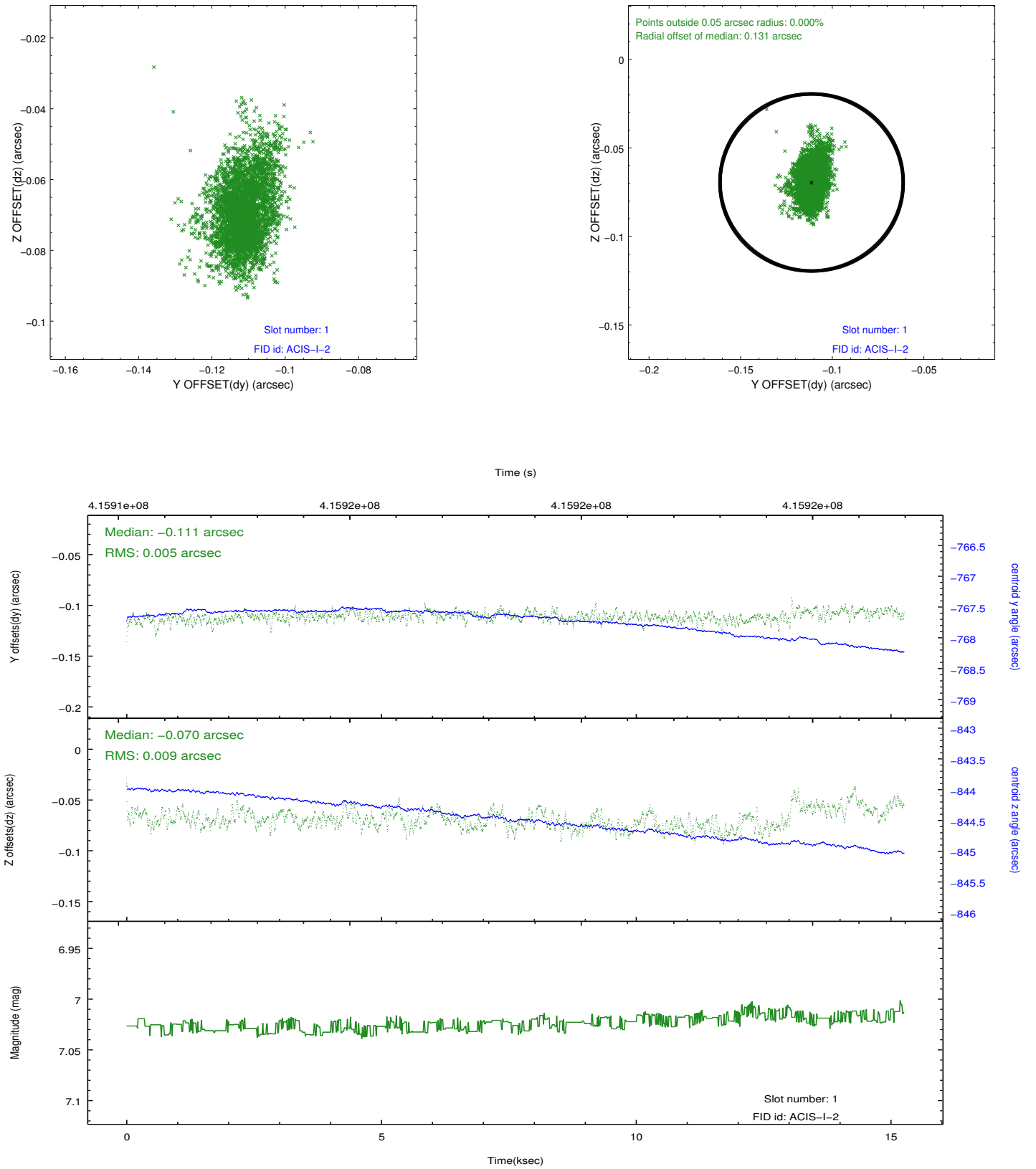


2.5 FID Slots

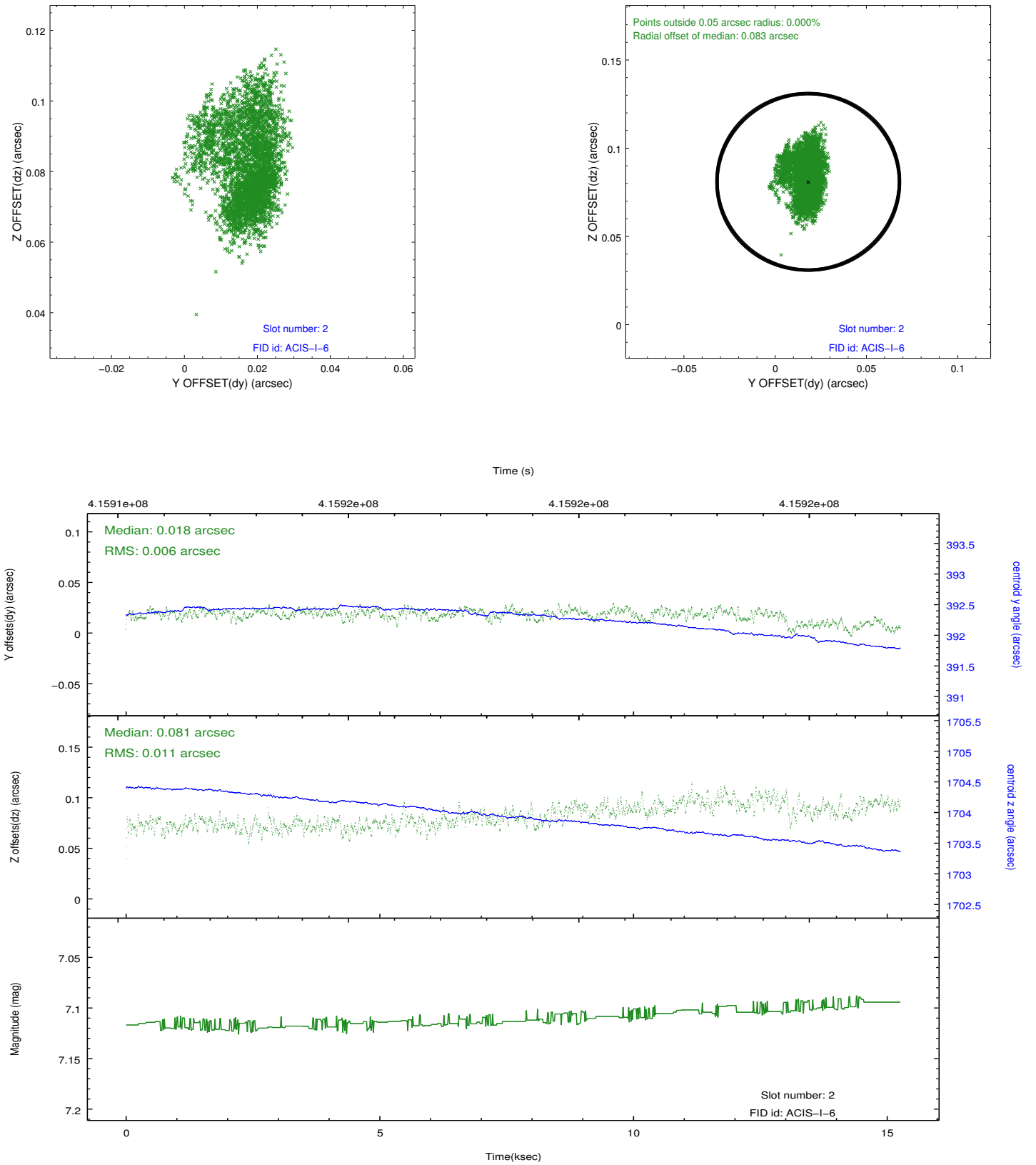
2.5.1 Slot 0



2.5.2 Slot 1



2.5.3 Slot 2



A Summary

A.1 Status

V&V Scientist	Joy Nichols
V&V Date (YYYY-MM-DD)	2014.12.04
V&V Edition	1
V&V Disposition and Status	OK
V&V Charge Time	15.052

A.2 Comments

There is no change in the original, archived evt1.fits file in this reprocessing. The level 1 LIVTIME is non-zero and the level 1 GTI extension has one entry (as before). However, the *flt1.fits file has been modified so that the LIVTIME0 for chip=0 is zero, resulting in level 2 LIVTIME and GTI0 extensions of *ext2.fits being absent.