

# V&V Reference Report

## L2 ASCDS Version : 8.4.5

Observation 11704 - L2 Version 2  
Chandra X-Ray Center

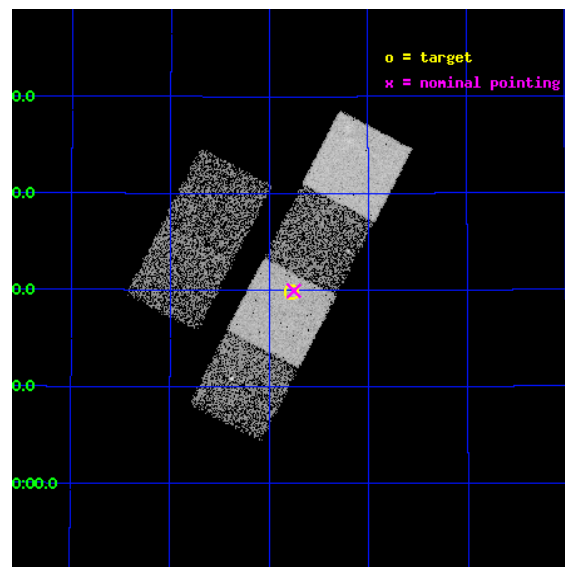
L2 Processing Date : Jun 23 2012

## Contents

<b>1</b>	<b>Front</b>	<b>2</b>
<b>2</b>	<b>OBI</b>	<b>3</b>
2.1	OBI . . . . .	3
2.1.1	Images . . . . .	3
2.1.2	Bias . . . . .	3
2.1.3	Parameters . . . . .	4
2.1.4	Events . . . . .	4
2.2	Compared Parameters . . . . .	5
2.3	Aspect . . . . .	6
2.4	Star Slots . . . . .	9
2.4.1	Slot 3 . . . . .	9
2.4.2	Slot 4 . . . . .	10
2.4.3	Slot 5 . . . . .	11
2.4.4	Slot 6 . . . . .	12
2.4.5	Slot 7 . . . . .	13
2.5	FID Slots . . . . .	14
2.5.1	Slot 0 . . . . .	14
2.5.2	Slot 1 . . . . .	15
2.5.3	Slot 2 . . . . .	16
<b>A</b>	<b>Summary</b>	<b>17</b>
A.1	Status . . . . .	17
A.2	Comments . . . . .	17

# 1 Front

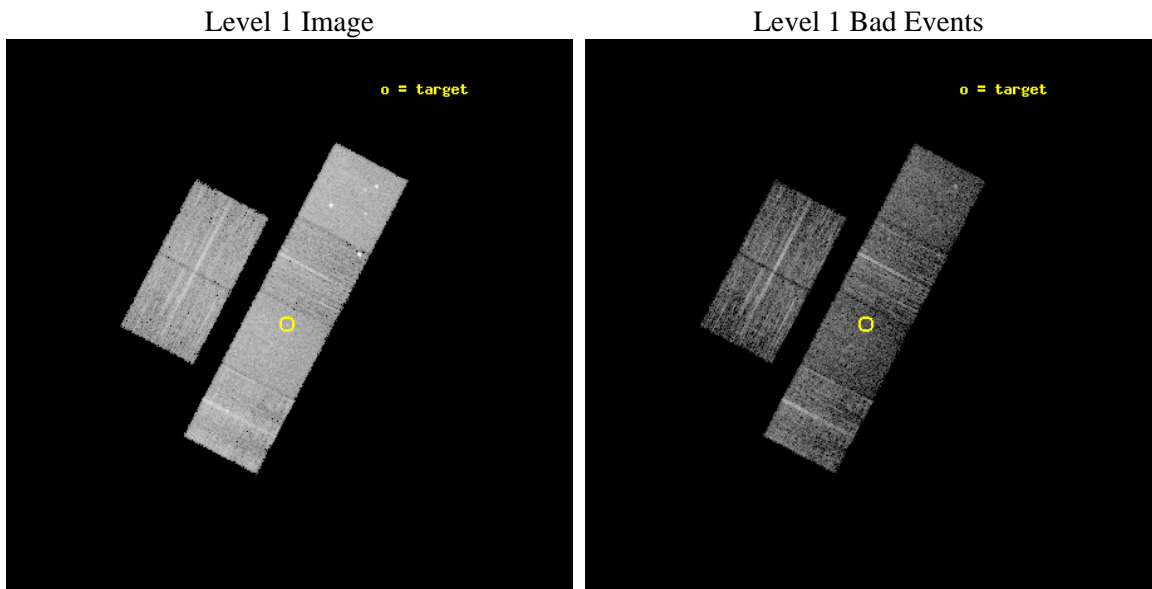
seq_num	702289	Sequence number
obs_id	11704	Observation id
title	After the Fall: Fading AGN in Post-starburst Galaxies	Proposal tit
observer	Dr. Christy Tremonti	Principal investigator
object	SDSS J163446.49+461946.7	Source name
dtcycle	0	&#160
cycle	P	events from which exps? Prim/Second/Both
ra_targ	248.69375	Observer's specified target RA [deg]
dec_targ	46.329639	Observer's specified target Dec [deg]
ra_nom	248.68767247947	Nominal RA [deg]
dec_nom	46.332263670025	Nominal Dec [deg]
roll_nom	117.57249621992	Nominal Roll [deg]
revision	2	Processing version of data
ontime	5046.3999812603	Sum of GTIs [s]
liveltime	4982.4994261203	Livetime [s]
ontime2	5043.1589708924	Sum of GTIs [s]
ontime3	5046.3999812603	Sum of GTIs [s]
ontime5	5046.3999812603	Sum of GTIs [s]
ontime6	5046.3999812603	Sum of GTIs [s]
ontime7	5046.3999812603	Sum of GTIs [s]
ontime8	5046.3999812603	Sum of GTIs [s]
l2events	63327	Number of level 2 events



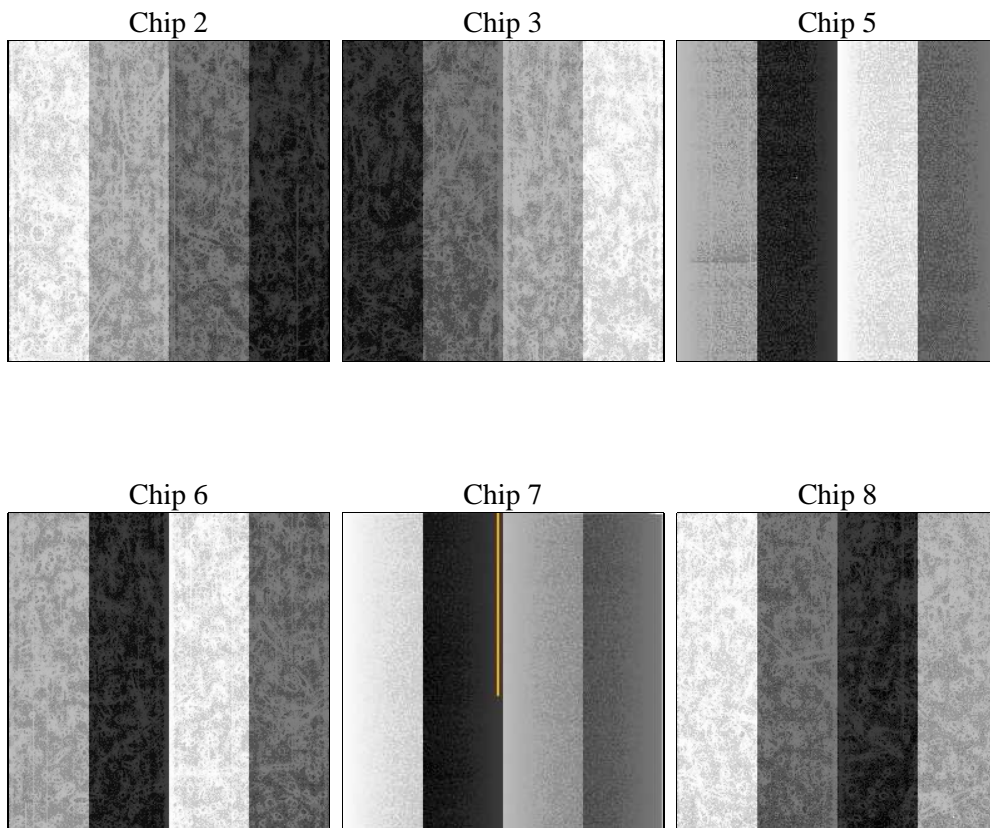
## 2 OBI

### 2.1 OBI

#### 2.1.1 Images



#### 2.1.2 Bias



### 2.1.3 Parameters

obi_num	0	Obi number	sched_exp_time	5000.000000	[s] Scheduled observation exposure time
ascdsver	8.4.5	Processing system revision	ontime	5046.3999812603	Sum of GTIs [s]
caldsver	4.4.10	&#160	ontime2	5043.1589708924	Sum of GTIs [s]
date	2012-06-23T18:14:09	Date and time of file creation	ontime3	5046.3999812603	Sum of GTIs [s]
revision	2	Processing version of data	ontime5	5046.3999812603	Sum of GTIs [s]
			ontime6	5046.3999812603	Sum of GTIs [s]
			ontime7	5046.3999812603	Sum of GTIs [s]
			ontime8	5046.3999812603	Sum of GTIs [s]
			l1events	277976	Number of level 1 events

### 2.1.4 Events

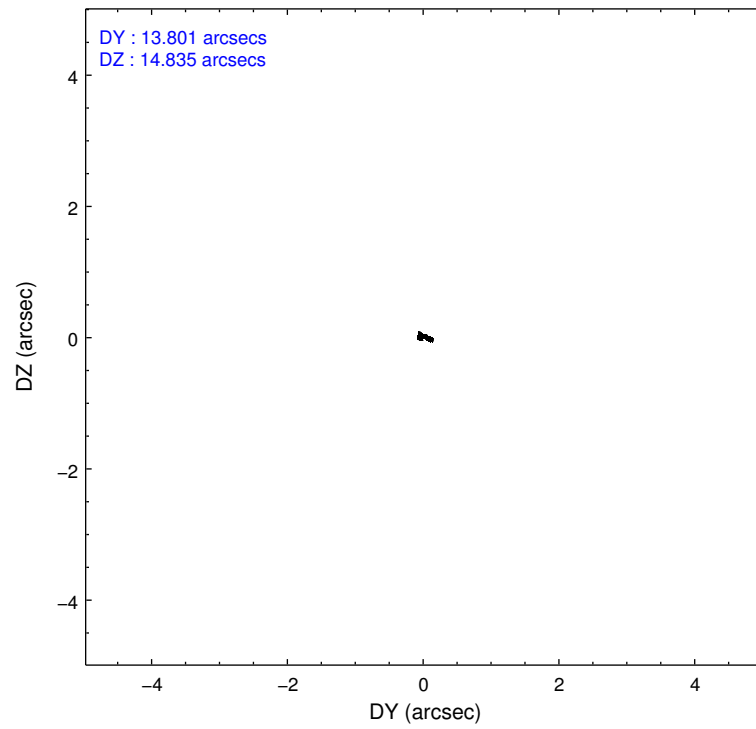
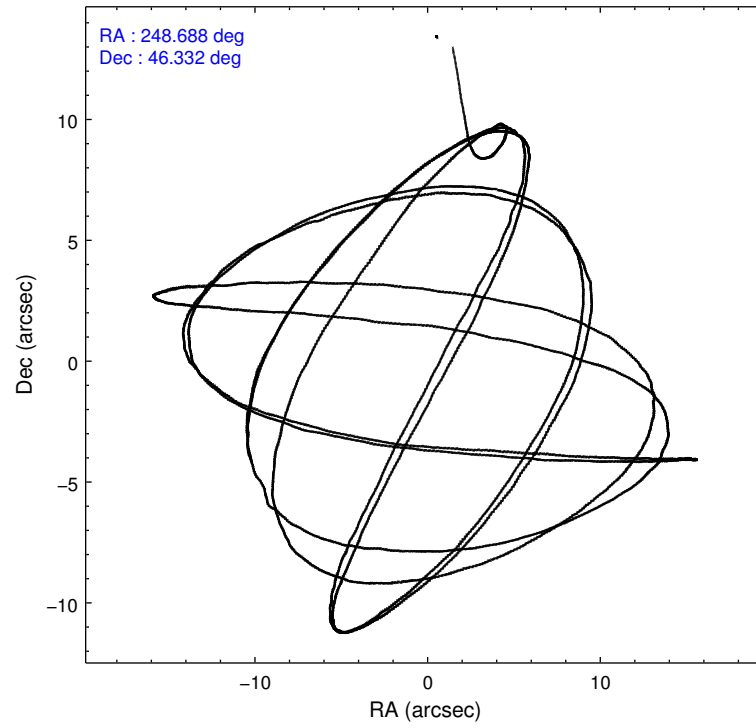
	ccd 2	ccd 3	ccd 5	ccd 6	ccd 7	ccd 8		ccd 2	ccd 3	ccd 5	ccd 6	ccd 7	ccd 8
level 1 events	40605	38836	59240	39625	47663	52007	grade 0 events	1414	1384	3831	1630	2056	4110
rejected events	36473	34942	29289	34104	26187	38130		3%	3%	6%	4%	4%	7%
rejected %	89%	89%	49%	86%	54%	73%	grade 1 events	28	12	236	20	62	29
								0%	0%	0%	0%	0%	0%
							grade 2 events	1052	836	8672	2121	4319	3163
								2%	2%	14%	5%	9%	6%
							grade 3 events	465	433	1107	407	1894	1581
								1%	1%	1%	1%	3%	3%
							grade 4 events	416	439	1133	428	1863	1433
								1%	1%	1%	1%	3%	2%
							grade 5 events	1487	1665	4444	1715	4939	2503
								3%	4%	7%	4%	10%	4%
							grade 6 events	789	813	15244	947	11363	3597
								1%	2%	25%	2%	23%	6%
							grade 7 events	34954	33254	24573	32357	21167	35591
								86%	85%	41%	81%	44%	68%

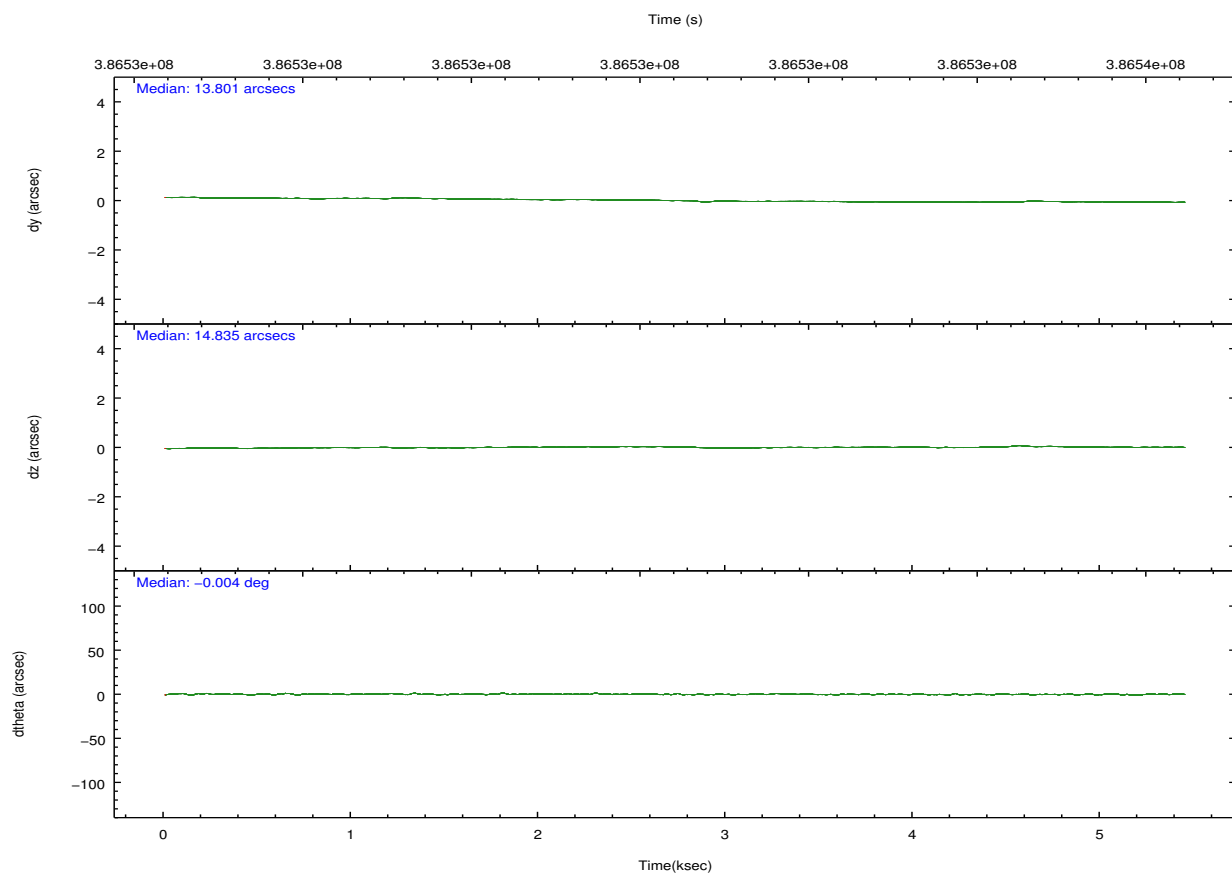
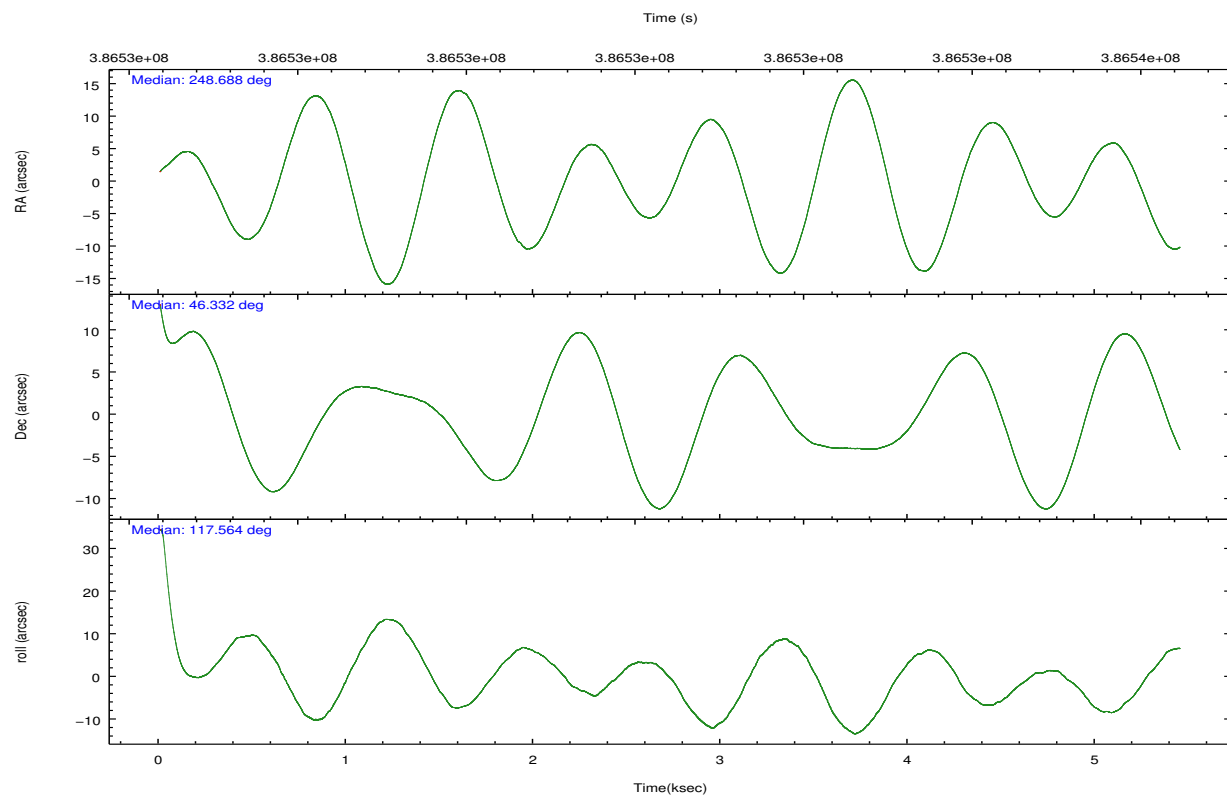


## 2.2 Compared Parameters

Parameter	Planned	Actual	Parameter	Planned	Actual
Instrument	ACIS	ACIS	Obspar format version number	7	7
Detector	ACIS-235678	ACIS-235678	Obspar file type	PREDICTED	ACTUAL
Grating	NONE	NONE	Obspar update status	NONE	UPDATED
Data mode	VFAINT	VFAINT	CCD I0 on	N	N
Observation mode	POINTING	POINTING	CCD I1 on	N	N
[deg] Pointing RA	248.721416	248.6876724794655	CCD I2 on	O1	Y
[deg] Pointing Dec	46.317766	46.33226367002487	CCD I3 on	O2	Y
[deg] Pointing Roll	117.391394	117.5724962199187	CCD S0 on	N	N
[mm] SIM focus pos	-0.684267	-0.6828225247311905	CCD S1 on	O4	Y
[mm] SIM defocus	0	0.001444936568705701	CCD S2 on	O5	Y
[mm] SIM translation stage pos	-190.132523	-190.1400660498719	CCD S3 on	Y	Y
[mm] SIM translation stage offset	0	0.00754346686406393	CCD S4 on	O3	Y
[s] Observation start time (MET)	386529930.184000	386528736.53393	CCD S5 on	N	N
Observation start date	2010-04-01T17:24:24	2010-04-01T17:05:36	Number of optional ACIS chips dropped	0	0
[s] Observation end time (MET)	386534930.184000	386536251.32181	On-chip summing requested	N	N
Observation end date	2010-04-01T18:47:44	2010-04-01T19:10:51	Subarray requested	NONE	NONE
Read mode	TIMED	TIMED	Alternating exposures requested	N	N
			[s] Primary exposure time	0.000000	3.2

## 2.3 Aspect



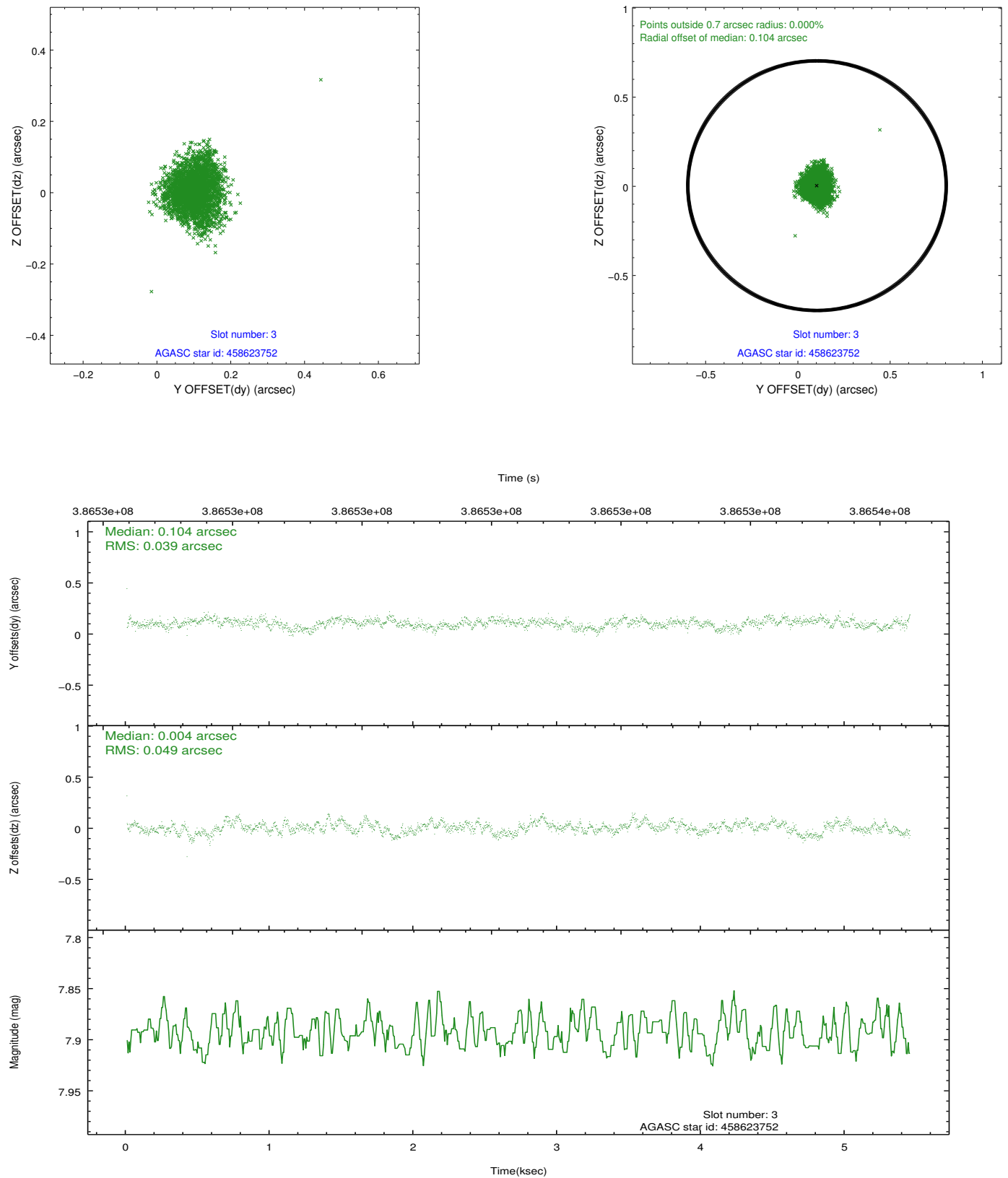


Slot Statistics

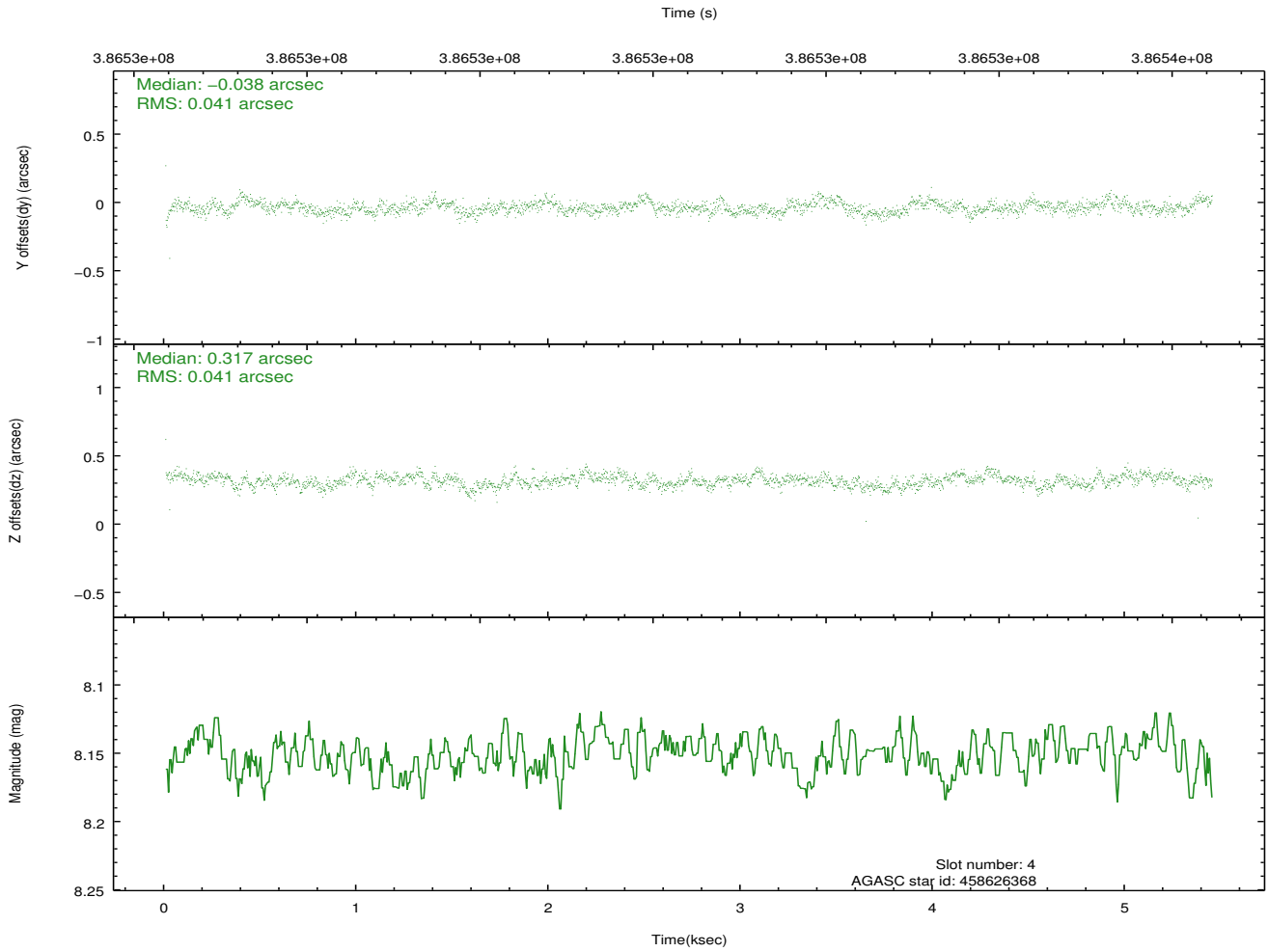
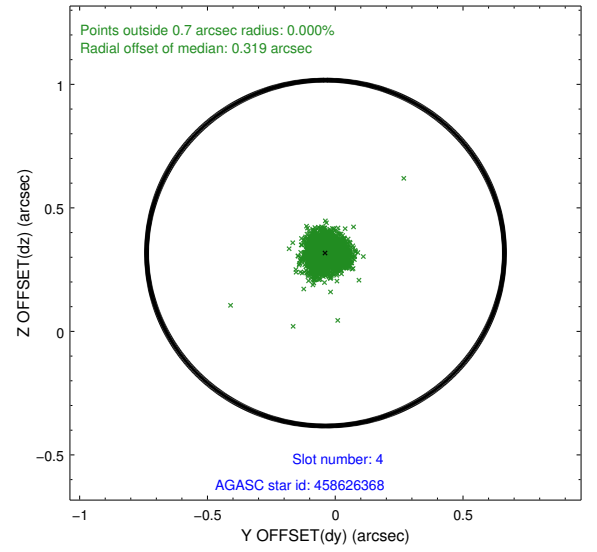
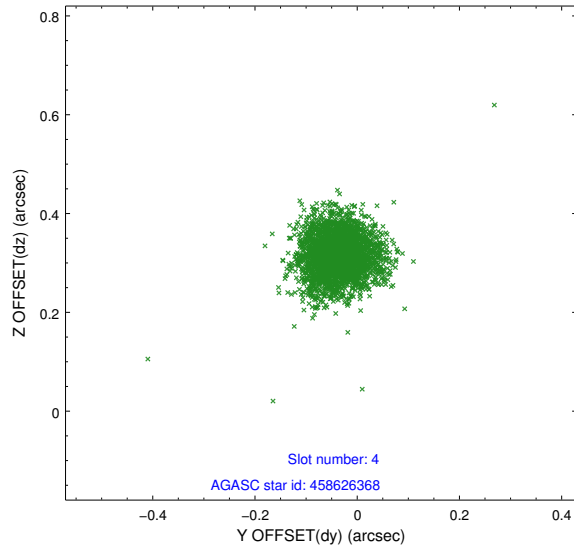
slot	status	id	mag	n_pts	med_dy	med_dz	dr1	dr2	ra	dec	mean_y	mean_z
0	FID	ACIS-S-2	6.89	1329	-0.122	-0.080	0.006	0.013	0.000000	0.000000	-766.89	-1736.28
1	FID	ACIS-S-4	6.98	1329	0.123	0.068	0.006	0.010	0.000000	0.000000	2146.15	171.18
2	FID	ACIS-S-6	7.12	1328	-0.029	0.019	0.006	0.010	0.000000	0.000000	396.63	809.80
3	GUIDE	458623752	7.89	2657	0.104	0.004	0.067	0.107	249.631548	46.393849	-784.76	-2138.24
4	GUIDE	458626368	8.15	2658	-0.038	0.317	0.060	0.097	249.060506	46.794229	1139.72	-1532.09
5	GUIDE	458632080	8.63	2658	-0.022	-0.215	0.073	0.120	248.384114	46.553459	1140.29	350.26
6	GUIDE	458630992	8.81	2654	-0.066	-0.061	0.085	0.136	249.097154	46.610030	508.58	-1308.53
7	GUIDE	457712288	9.75	2652	0.022	-0.045	0.123	0.198	247.411429	46.603683	2428.01	2390.97

## 2.4 Star Slots

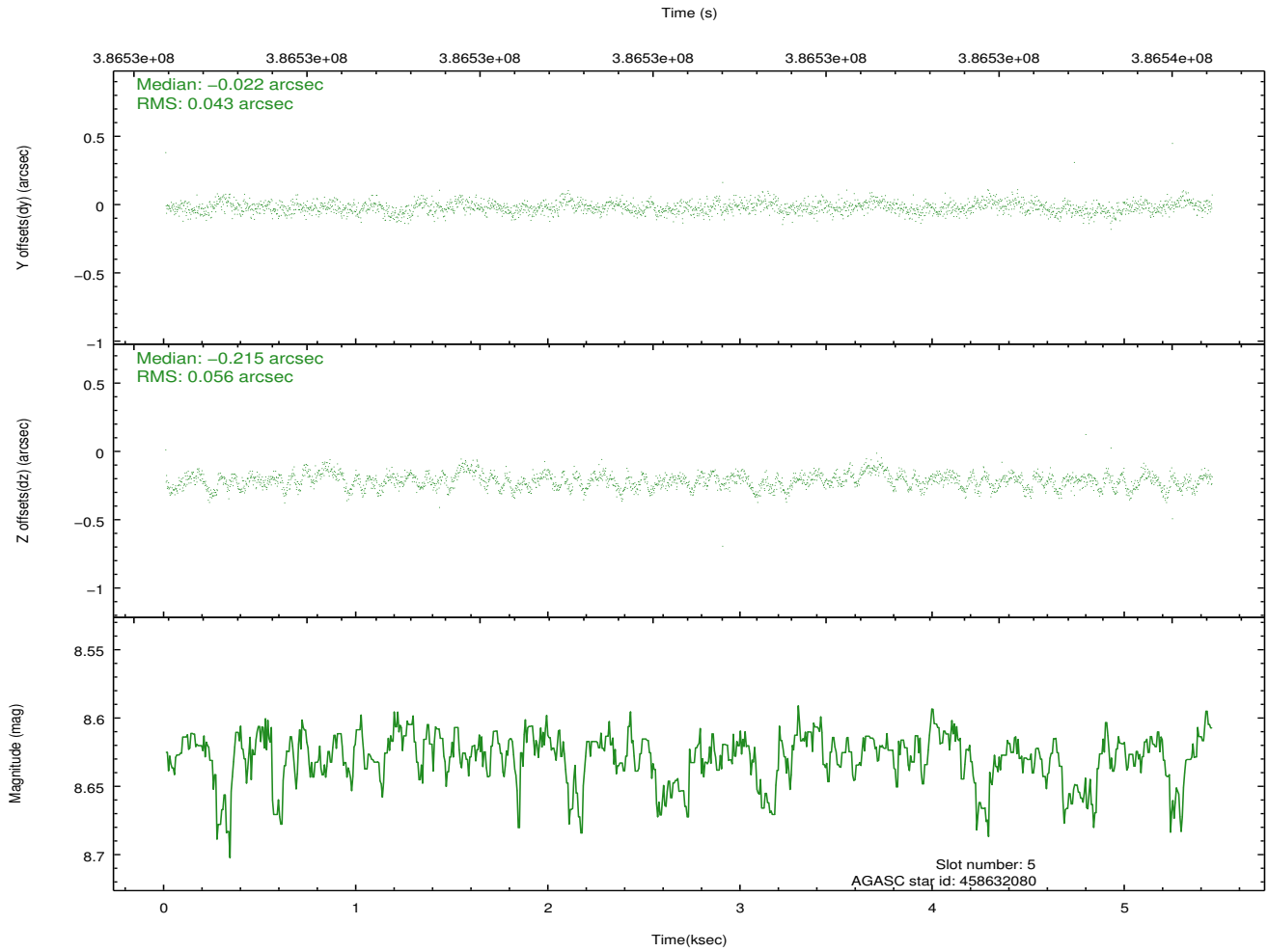
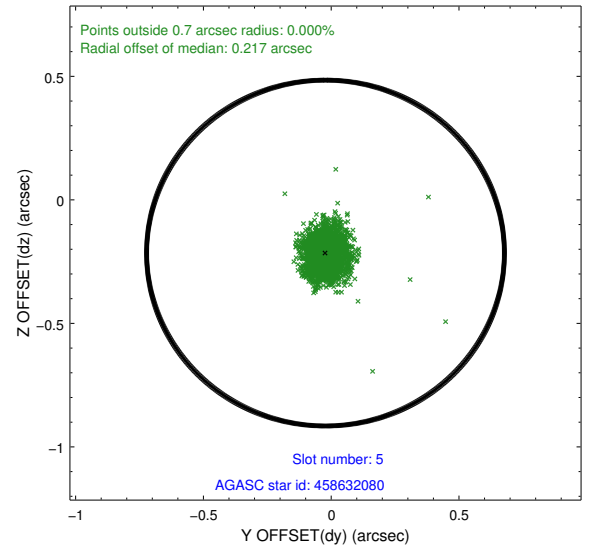
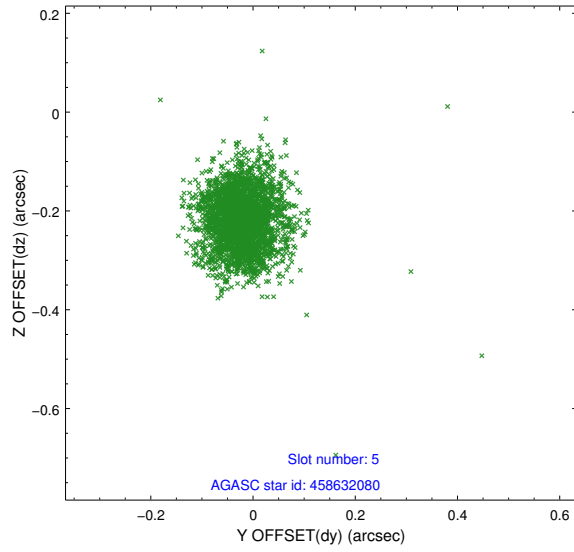
### 2.4.1 Slot 3



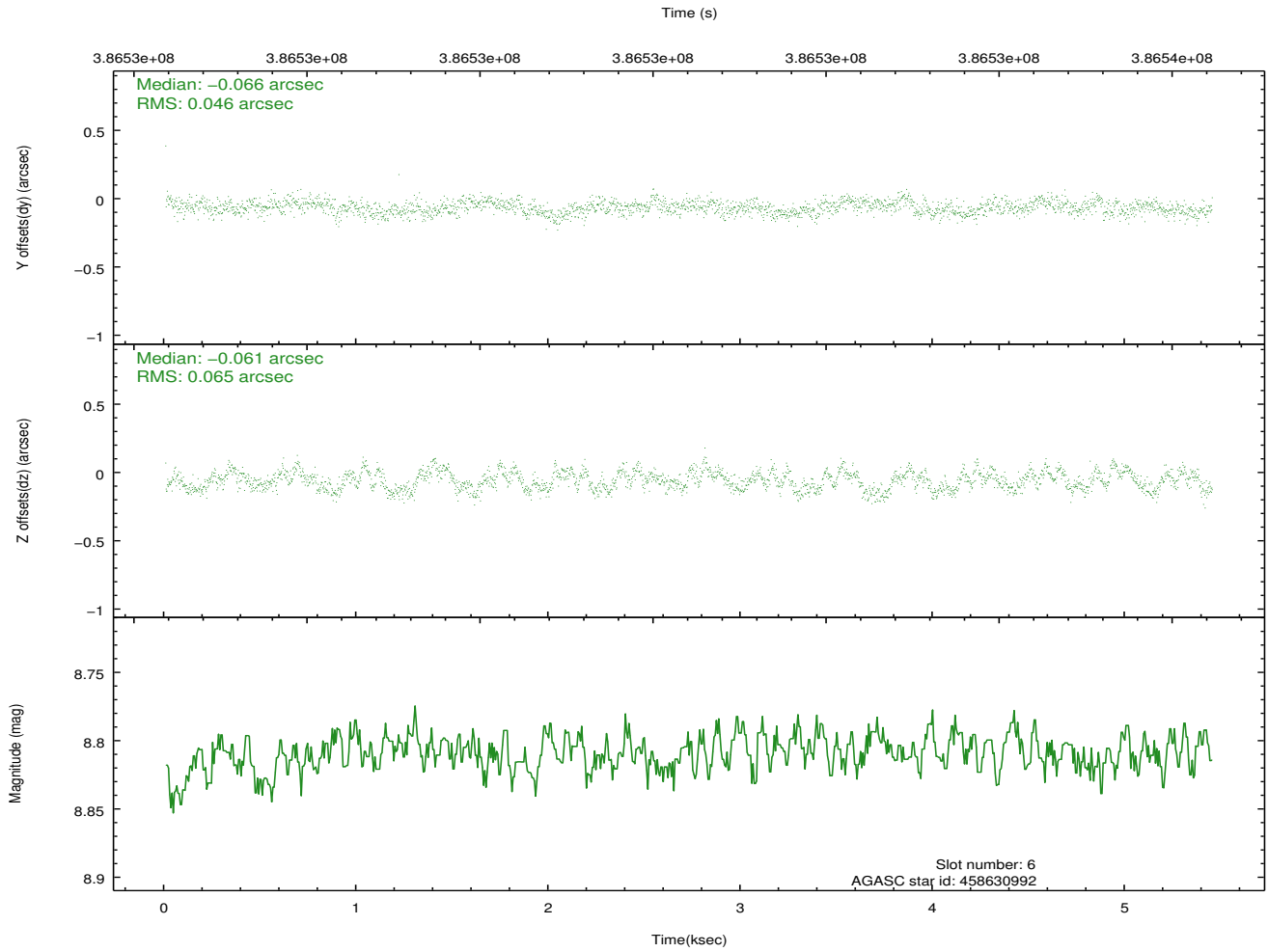
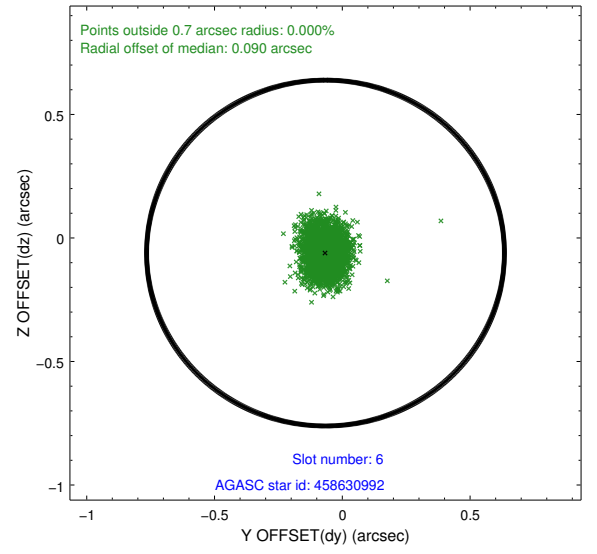
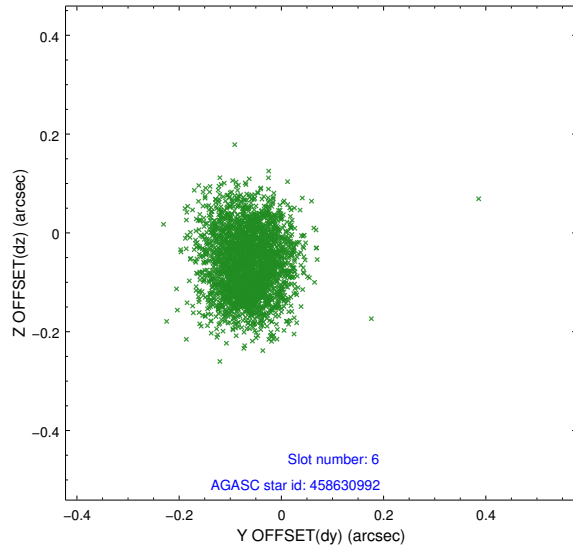
## 2.4.2 Slot 4



### 2.4.3 Slot 5

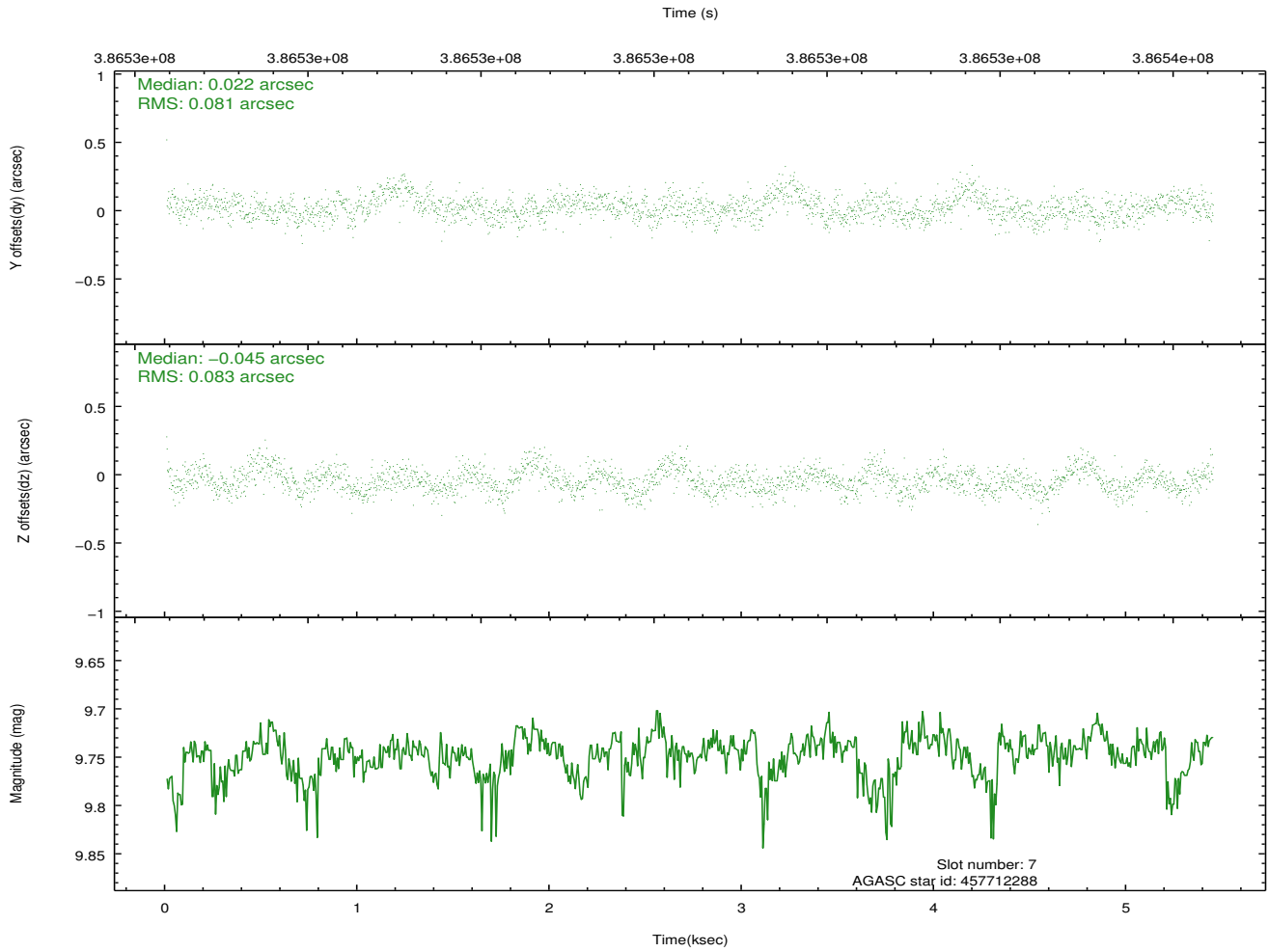
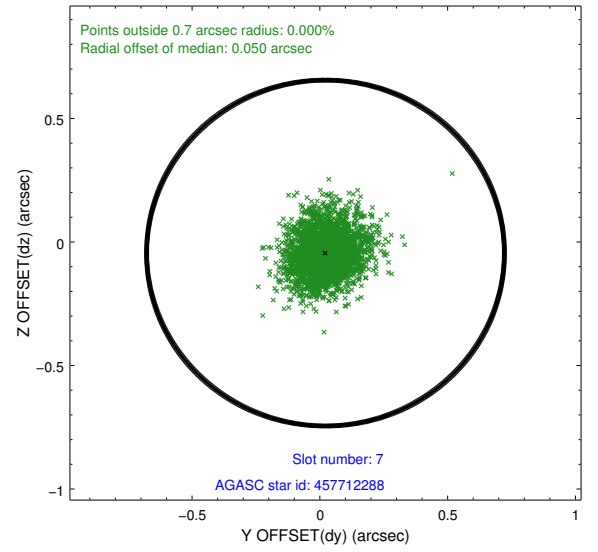
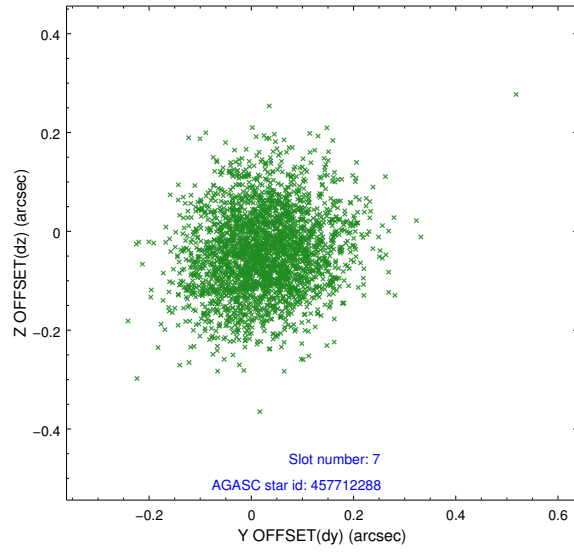


## 2.4.4 Slot 6



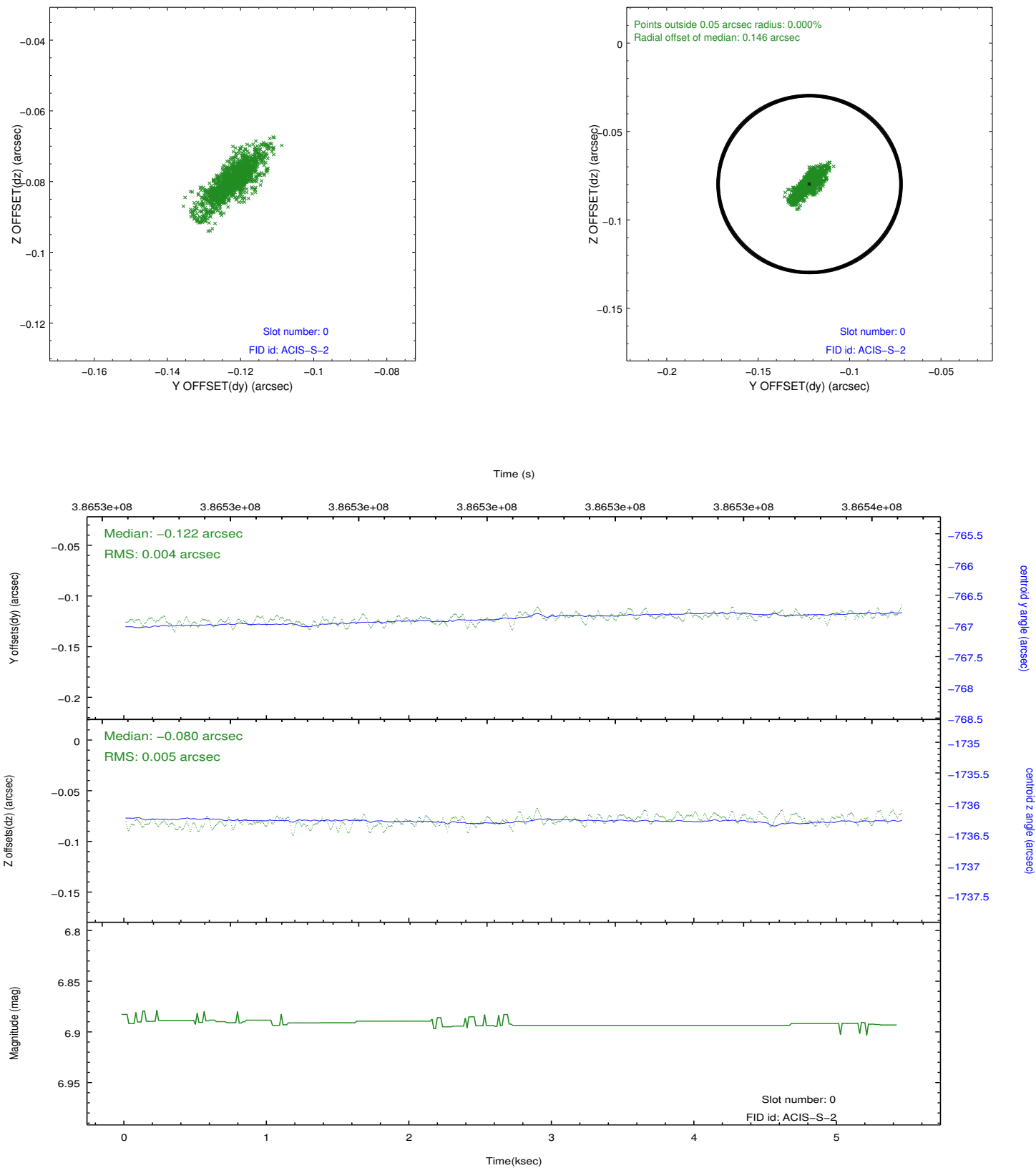


## 2.4.5 Slot 7

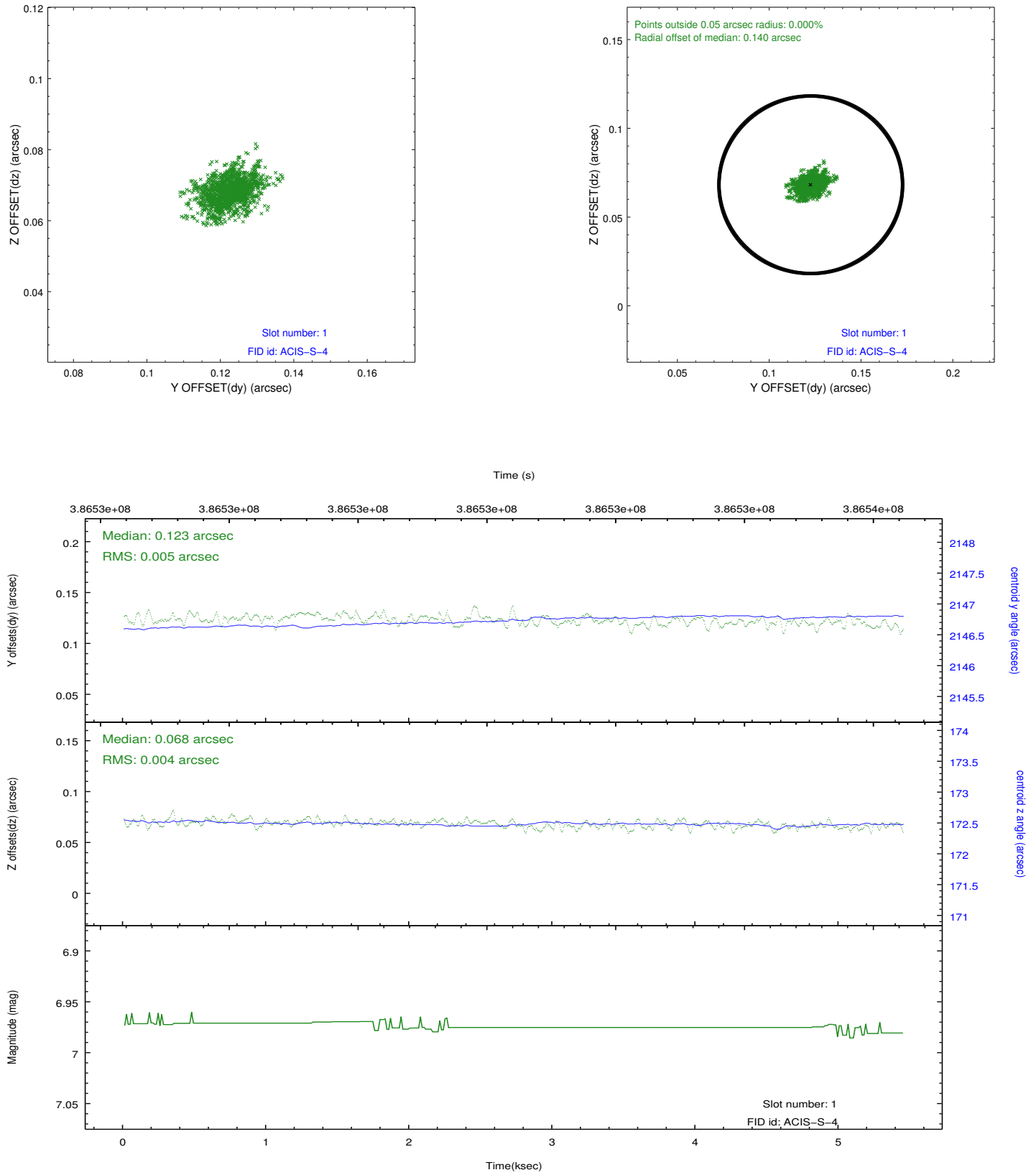


## 2.5 FID Slots

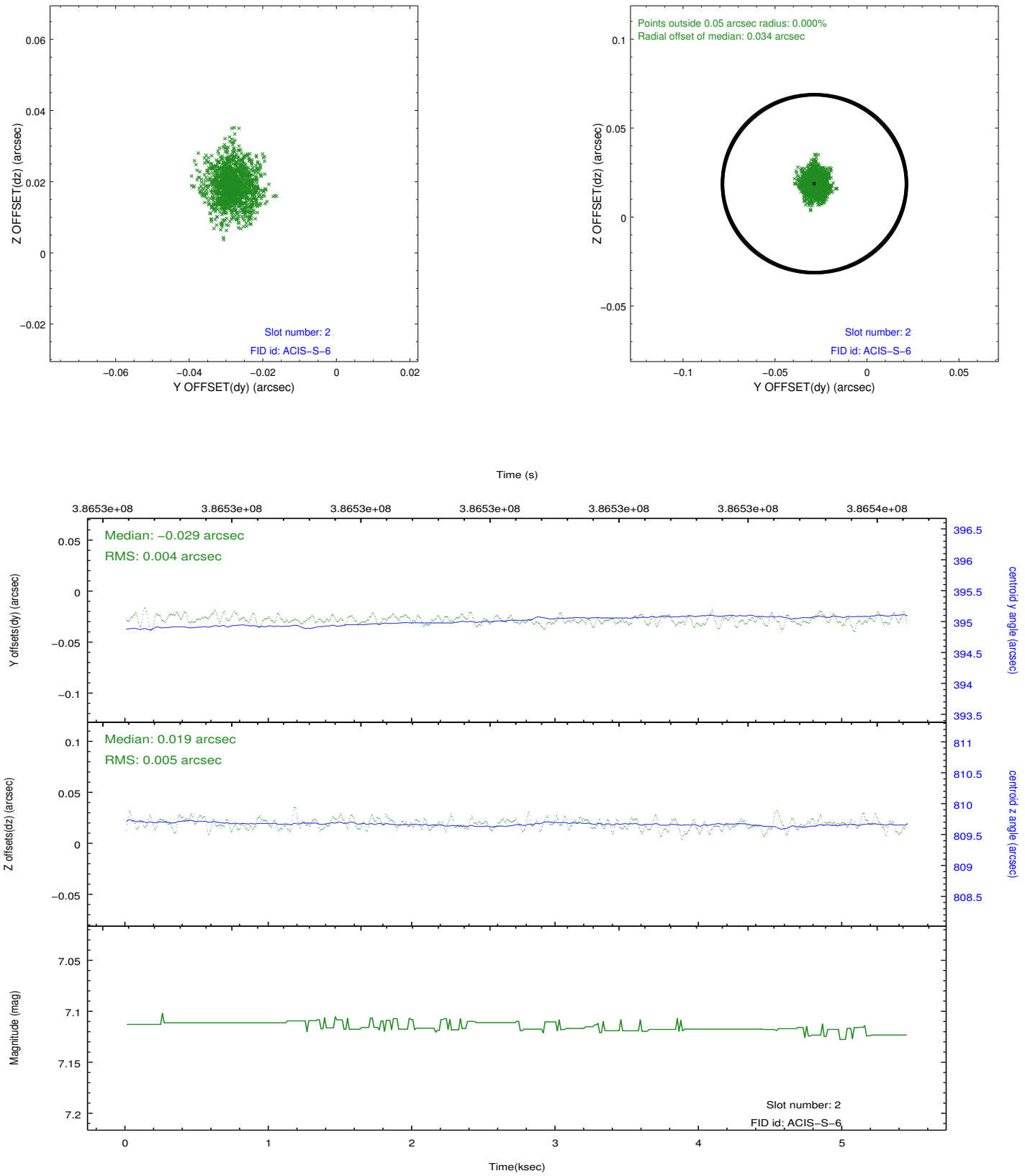
### 2.5.1 Slot 0



## 2.5.2 Slot 1



### 2.5.3 Slot 2



## A Summary

### A.1 Status

V&V Scientist	Jen Lauer
V&V Date (YYYY-MM-DD)	2012.06.29
V&V Edition	1
V&V Disposition and Status	OK
V&V Charge Time	5.0463999812603

### A.2 Comments

Joint Proposal: HST