

V&V Reference Report

L2 ASCDS Version : 8.4.5

Observation 11694 - L2 Version 2
Chandra X-Ray Center

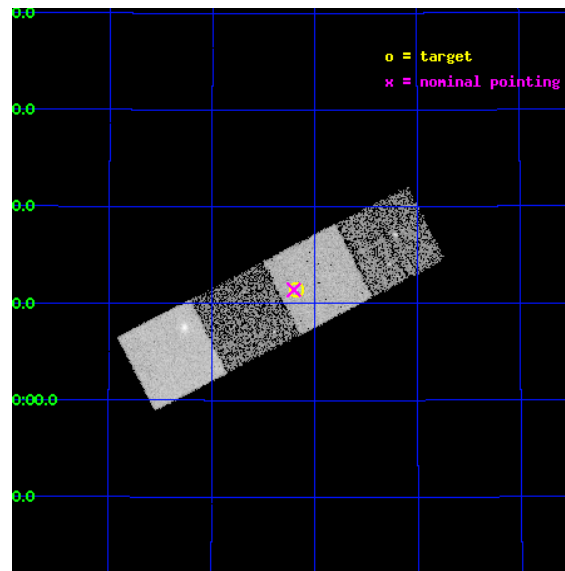
L2 Processing Date : Jul 4 2012

Contents

1	Front	2
2	OBI	3
2.1	OBI	3
2.1.1	Images	3
2.1.2	Bias	3
2.1.3	Parameters	4
2.1.4	Events	4
2.2	Compared Parameters	5
2.3	Aspect	6
2.4	Star Slots	9
2.4.1	Slot 3	9
2.4.2	Slot 4	10
2.4.3	Slot 5	11
2.4.4	Slot 6	12
2.4.5	Slot 7	13
2.5	FID Slots	14
2.5.1	Slot 0	14
2.5.2	Slot 1	15
2.5.3	Slot 2	16
A	Summary	17
A.1	Status	17
A.2	Comments	17

1 Front

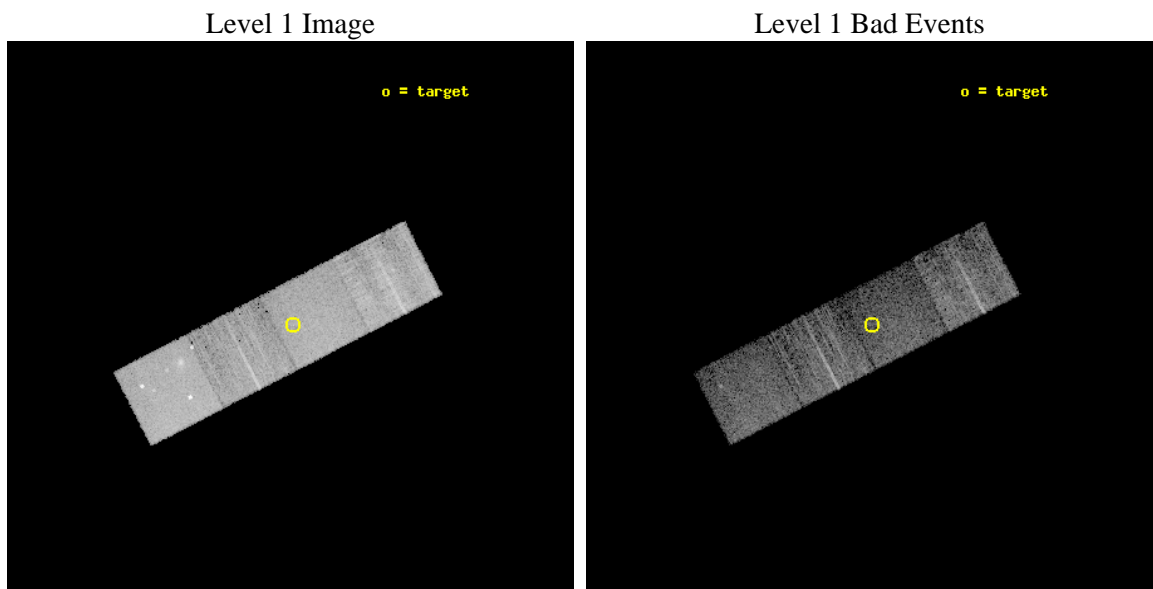
seq_num	702279	Sequence number
obs_id	11694	Observation id
title	Chandra survey of Polar Broad Absorption-Line Quasars	Proposal tit
observer	Dr. Kajal Ghosh	Principal investigator
object	SDSS J142610.59+441124.0	Source name
dtcycle	0	
cycle	P	events from which exps? Prim/Second/Both
ra_targ	216.54375	Observer's specified target RA [deg]
dec_targ	44.19	Observer's specified target Dec [deg]
ra_nom	216.55050260077	Nominal RA [deg]
dec_nom	44.190437733575	Nominal Dec [deg]
roll_nom	332.74512881489	Nominal Roll [deg]
revision	2	Processing version of data
ontime	6046.9928107858	Sum of GTIs [s]
livetime	5967.9843979815	Livetime [s]
ontime5	6046.9517707825	Sum of GTIs [s]
ontime6	6046.9107307792	Sum of GTIs [s]
ontime7	6046.9928107858	Sum of GTIs [s]
ontime8	6046.8696907759	Sum of GTIs [s]
l2events	66479	Number of level 2 events



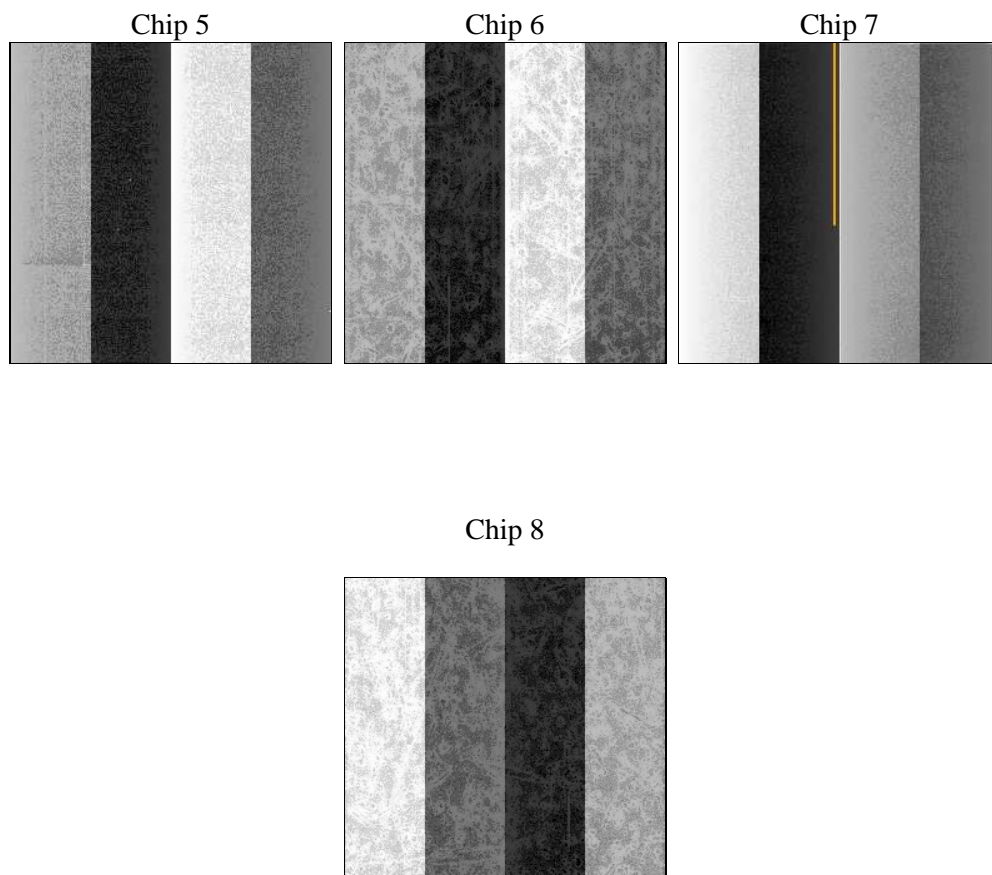
2 OBI

2.1 OBI

2.1.1 Images



2.1.2 Bias



2.1.3 Parameters

obi_num	1	Obi number	sched_exp_time	6000.000000	[s] Scheduled observation exposure time
ascdsver	8.4.5	Processing system revision	ontime	6046.9928107858	Sum of GTIs [s]
caldsver	4.5.0	 	ontime5	6046.9517707825	Sum of GTIs [s]
date	2012-07-04T15:46:54	Date and time of file creation	ontime6	6046.9107307792	Sum of GTIs [s]
revision	2	Processing version of data	ontime7	6046.9928107858	Sum of GTIs [s]
			ontime8	6046.8696907759	Sum of GTIs [s]
			l1events	231125	Number of level 1 events

2.1.4 Events

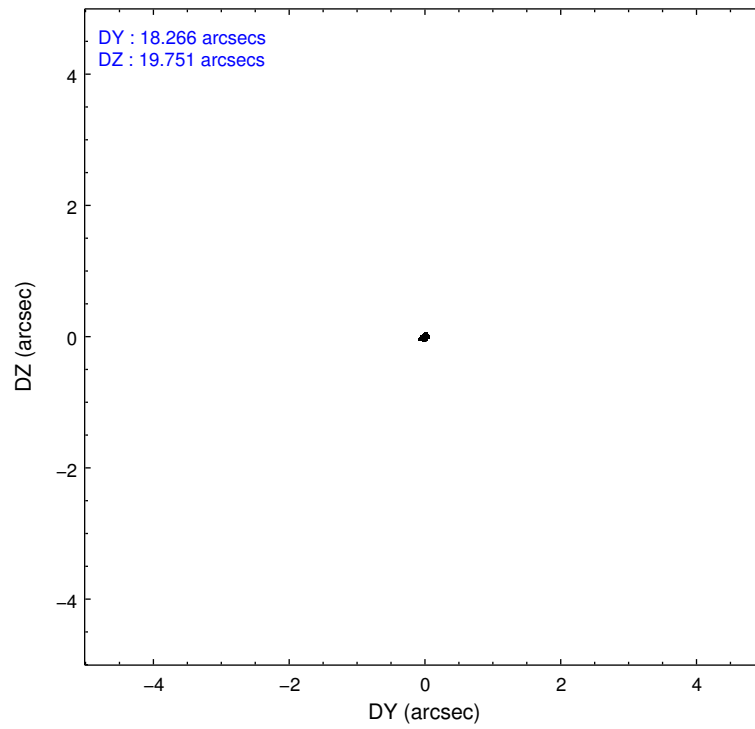
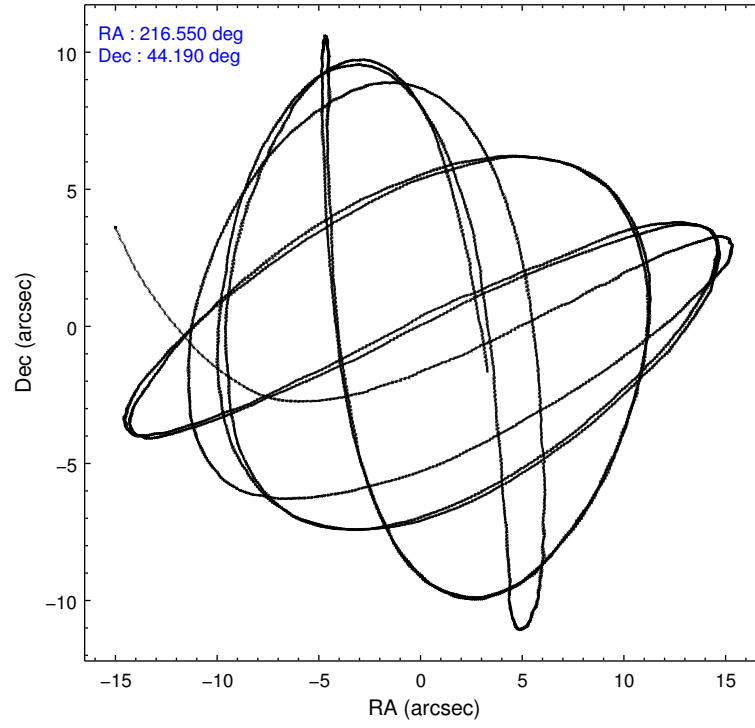
	ccd 5	ccd 6	ccd 7	ccd 8
level 1 events	71197	44444	54334	61150
rejected events	34318	39367	30003	44713
rejected %	48%	88%	55%	73%

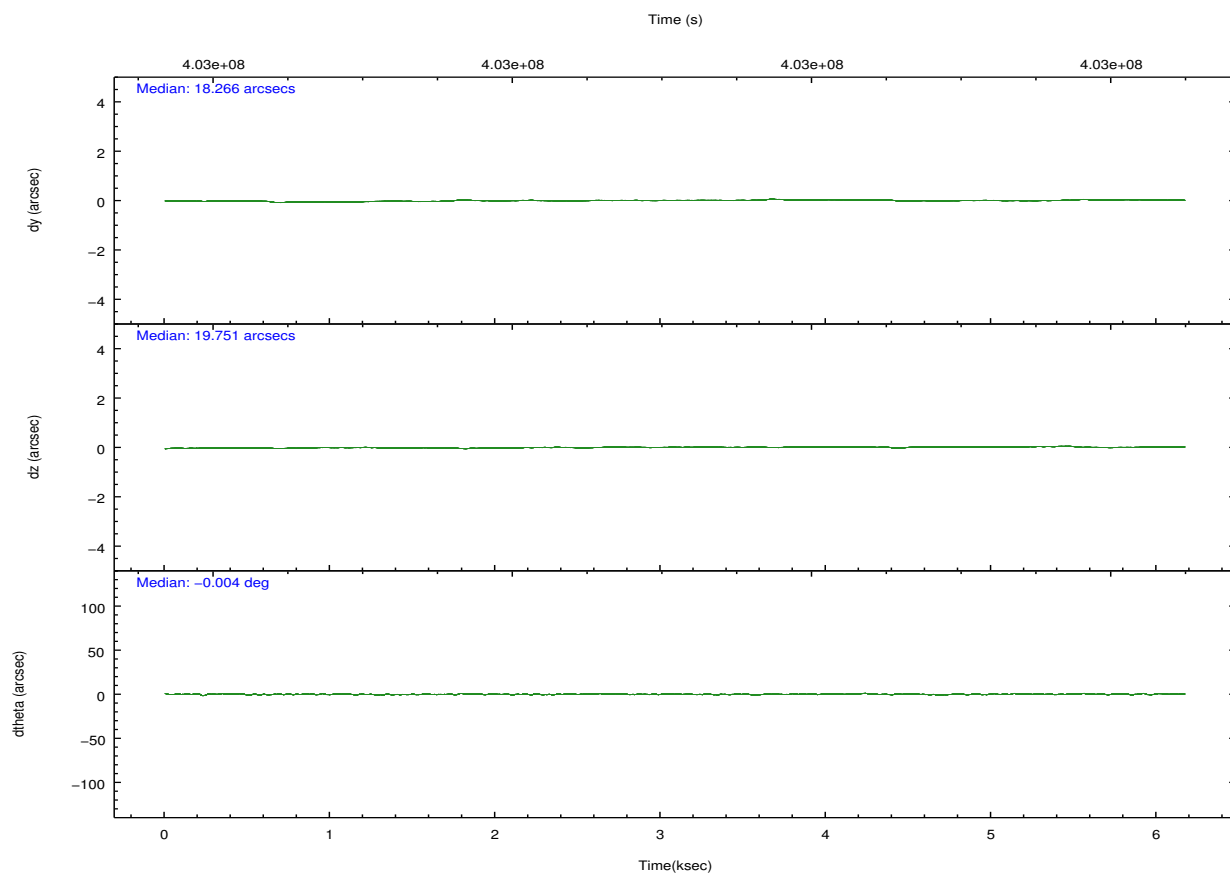
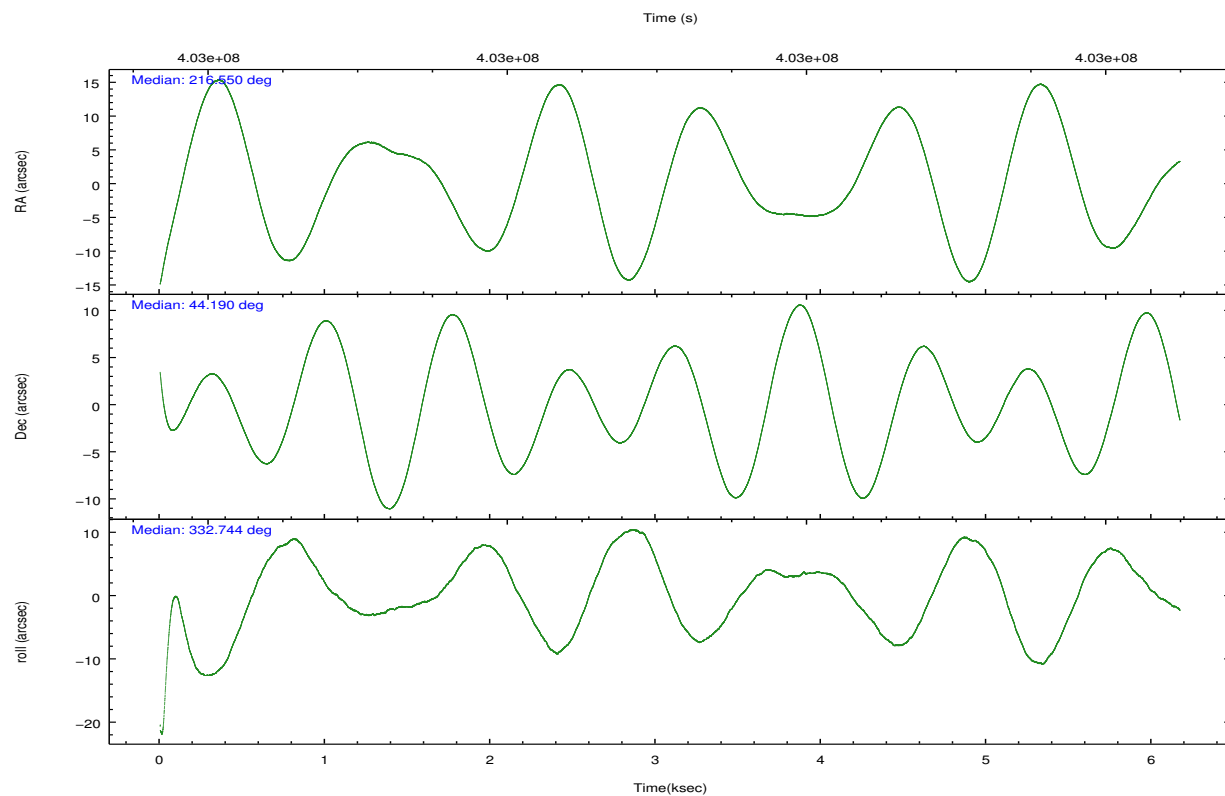
	ccd 5	ccd 6	ccd 7	ccd 8
grade 0 events	5608	1801	2156	5006
	7%	4%	3%	8%
grade 1 events	285	25	66	52
	0%	0%	0%	0%
grade 2 events	10537	1141	5041	3698
	14%	2%	9%	6%
grade 3 events	1427	519	2239	1781
	2%	1%	4%	2%
grade 4 events	1387	542	2215	1687
	1%	1%	4%	2%
grade 5 events	5163	1998	5632	2858
	7%	4%	10%	4%
grade 6 events	17946	1080	12699	4271
	25%	2%	23%	6%
grade 7 events	28844	37338	24286	41797
	40%	84%	44%	68%

2.2 Compared Parameters

Parameter	Planned	Actual	Parameter	Planned	Actual
Instrument	ACIS	ACIS	Obspar format version number	7	7
Detector	ACIS-5678	ACIS-5678	Obspar file type	PREDICTED	ACTUAL
Grating	NONE	NONE	Obspar update status	NONE	UPDATED
Data mode	FAINT	FAINT	Number of optional ACIS chips dropped	0	0
Observation mode	POINTING	POINTING	On-chip summing requested	N	N
[deg] Pointing RA	216.512430	216.5505026007712	Subarray requested	NONE	NONE
[deg] Pointing Dec	44.188688	44.19043773357493	Alternating exposures requested	N	N
[deg] Pointing Roll	332.615117	332.7451288148859	[s] Primary exposure time	0.000000	3.1
[mm] SIM focus pos	-0.684267	-0.6828225247311905			
[mm] SIM defocus	0	0.001444936568705701			
[mm] SIM translation stage pos	-190.132523	-190.1425803651734			
[mm] SIM translation stage offset	0	0.01005778216563158			
[s] Observation start time (MET)	402996175.184000	402994432.6999			
Observation start date	2010-10-09T07:21:49	2010-10-09T06:53:52			
[s] Observation end time (MET)	403002175.184000	403002502.52532			
Observation end date	2010-10-09T09:01:49	2010-10-09T09:08:22			
Read mode	TIMED	TIMED			

2.3 Aspect



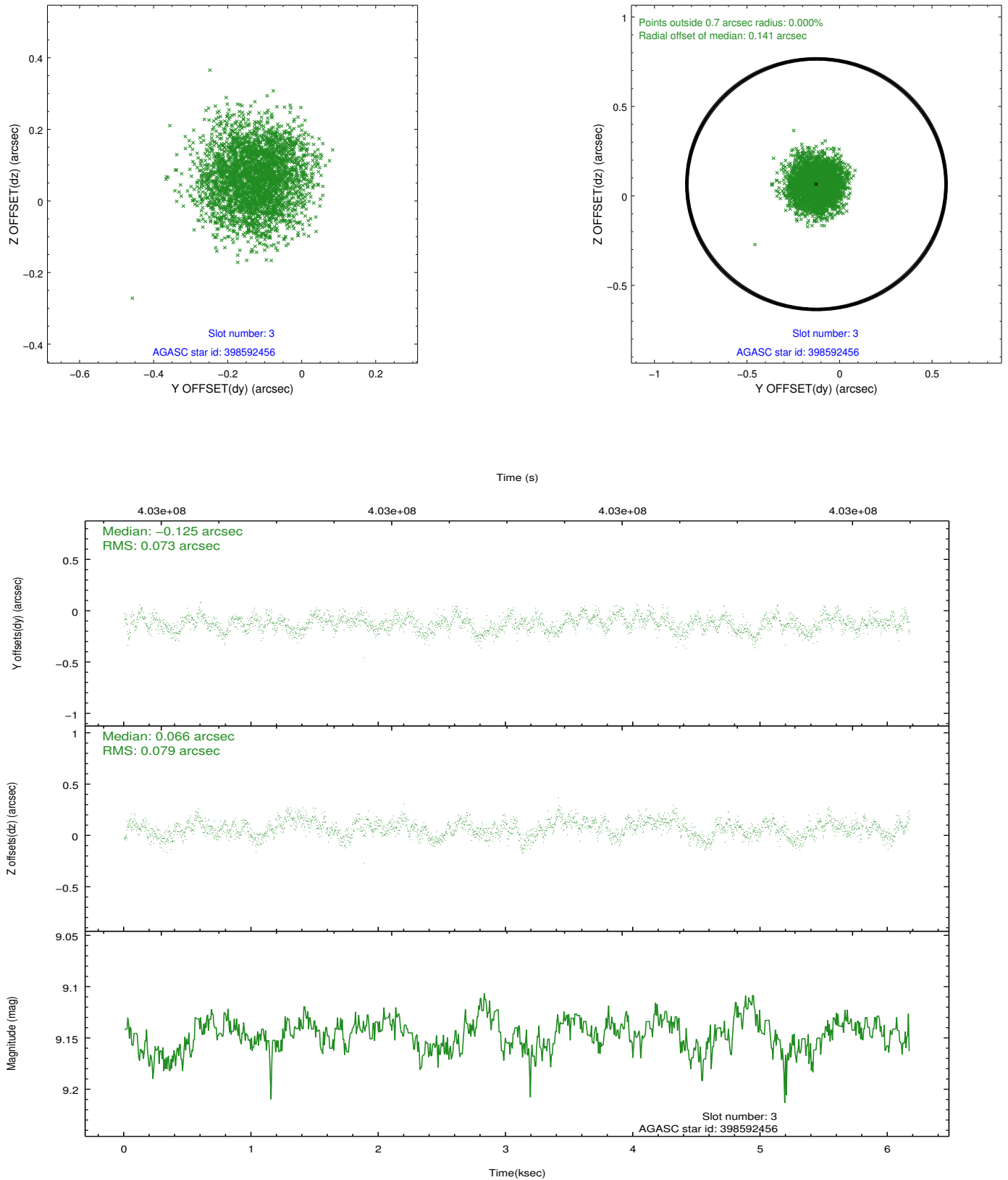


Slot Statistics

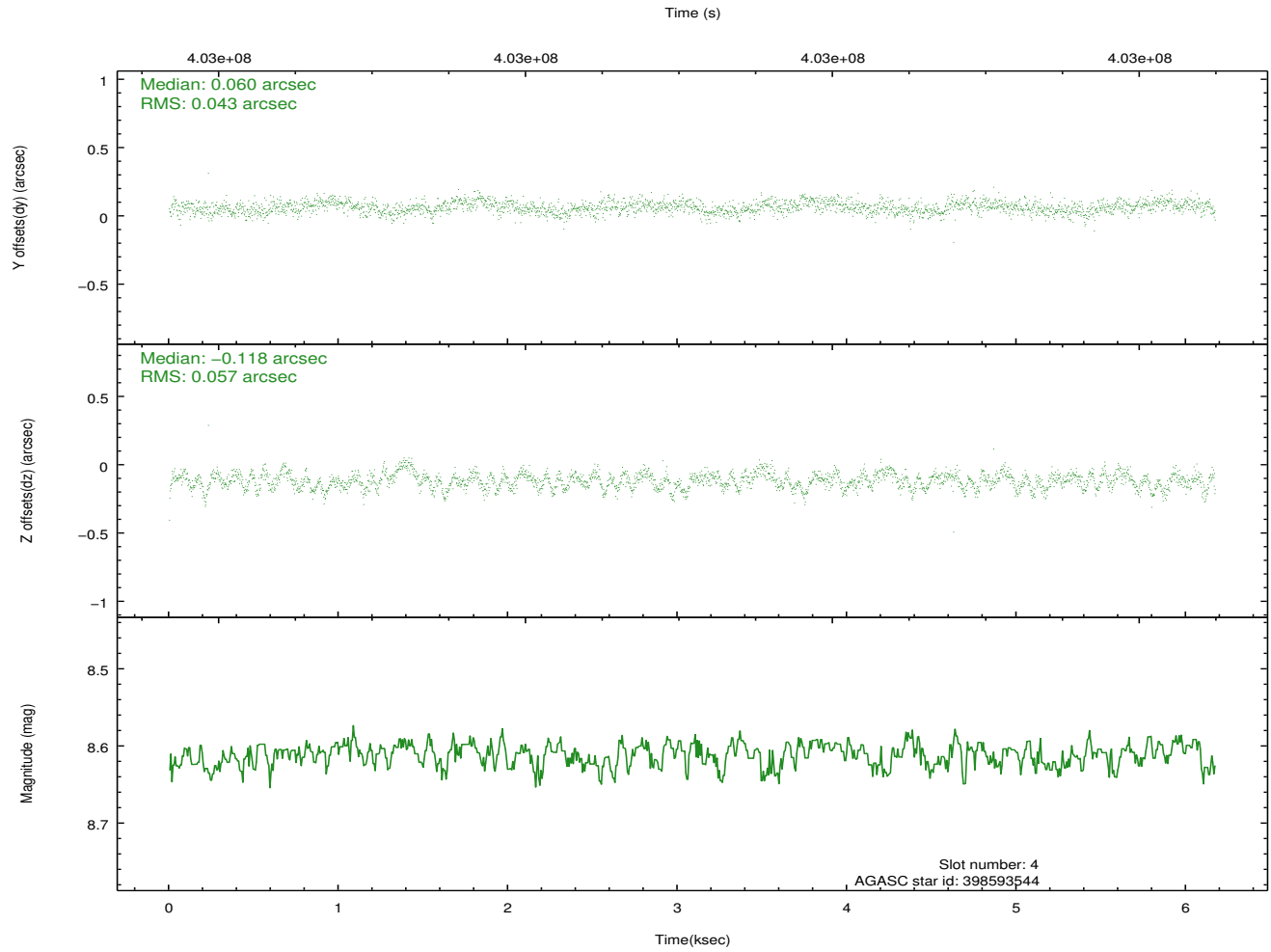
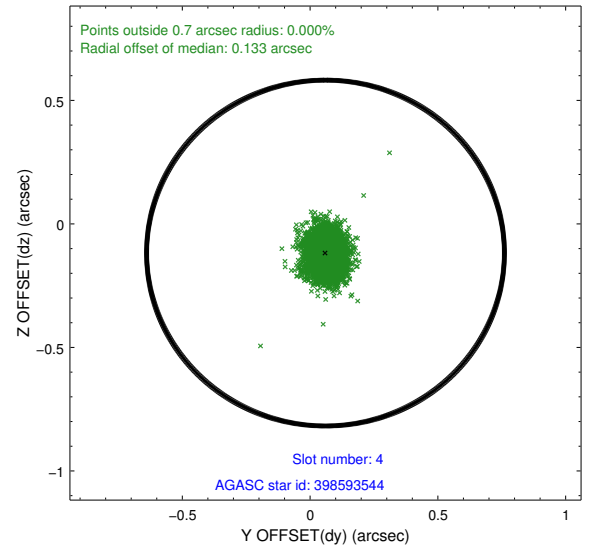
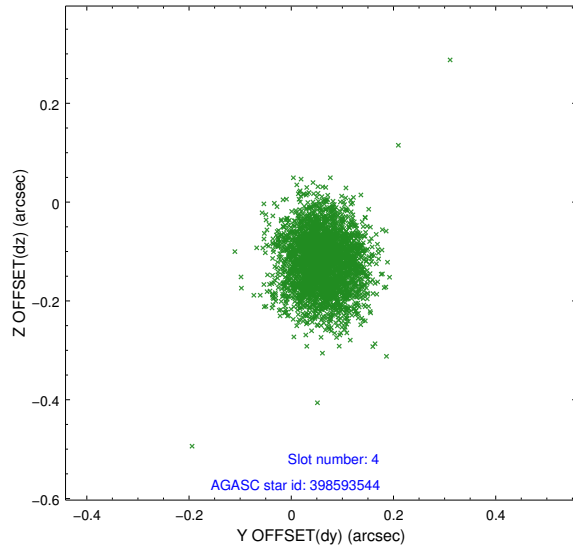
slot	status	id	mag	n_pts	med_dy	med_dz	dr1	dr2	ra	dec	mean_y	mean_z
0	FID	ACIS-S-2	6.91	1505	-0.082	-0.012	0.006	0.011	0.000000	0.000000	-771.40	-1741.21
1	FID	ACIS-S-4	6.98	1505	0.186	0.043	0.005	0.010	0.000000	0.000000	2141.70	166.33
2	FID	ACIS-S-5	7.02	1505	-0.136	-0.022	0.006	0.010	0.000000	0.000000	-1823.08	161.02
3	GUIDE	398592456	9.15	3010	-0.125	0.066	0.117	0.182	215.495069	44.097478	-2191.59	-1486.95
4	GUIDE	398593544	8.61	3009	0.060	-0.118	0.075	0.122	216.095119	44.392456	-1292.08	159.03
5	GUIDE	398724216	9.59	3008	0.079	0.118	0.139	0.254	216.907325	43.952017	1300.44	-284.22
6	GUIDE	398726944	9.56	3008	-0.004	-0.049	0.128	0.198	216.859138	44.488148	294.71	1368.37
7	GUIDE	398727024	9.58	3008	-0.019	0.001	0.111	0.177	217.158424	44.398345	1123.20	1442.16

2.4 Star Slots

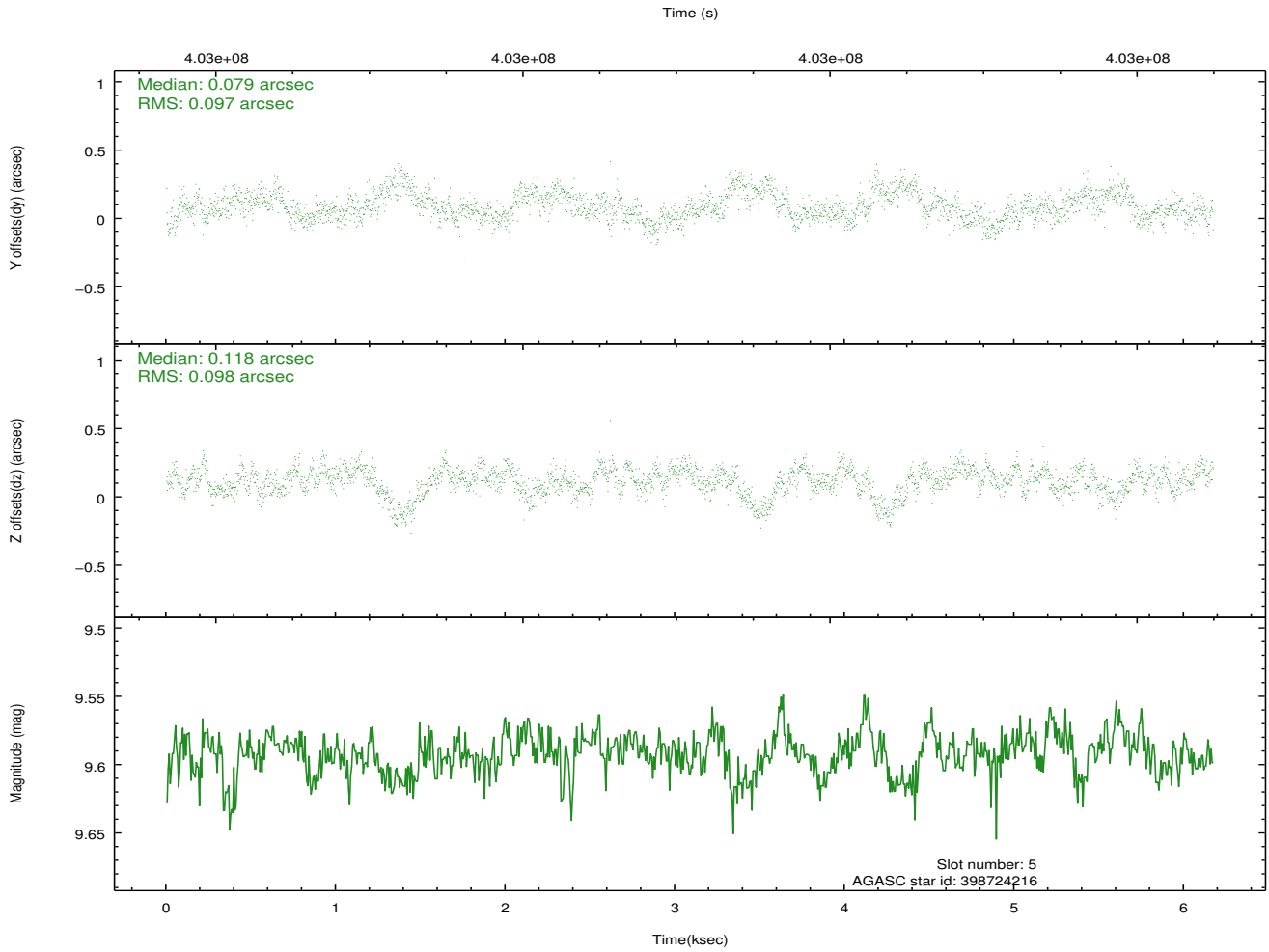
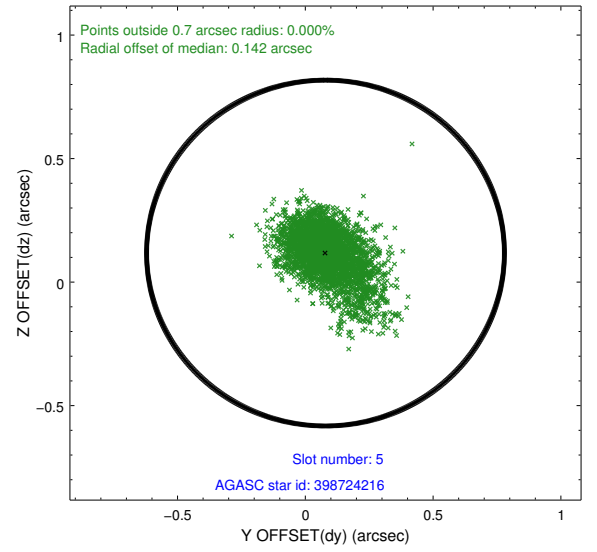
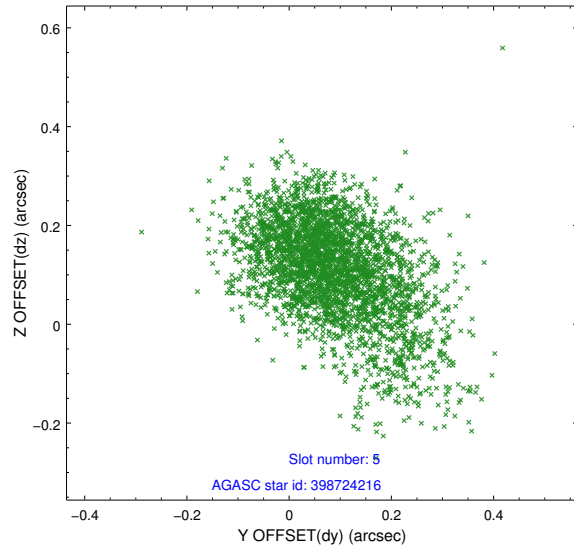
2.4.1 Slot 3



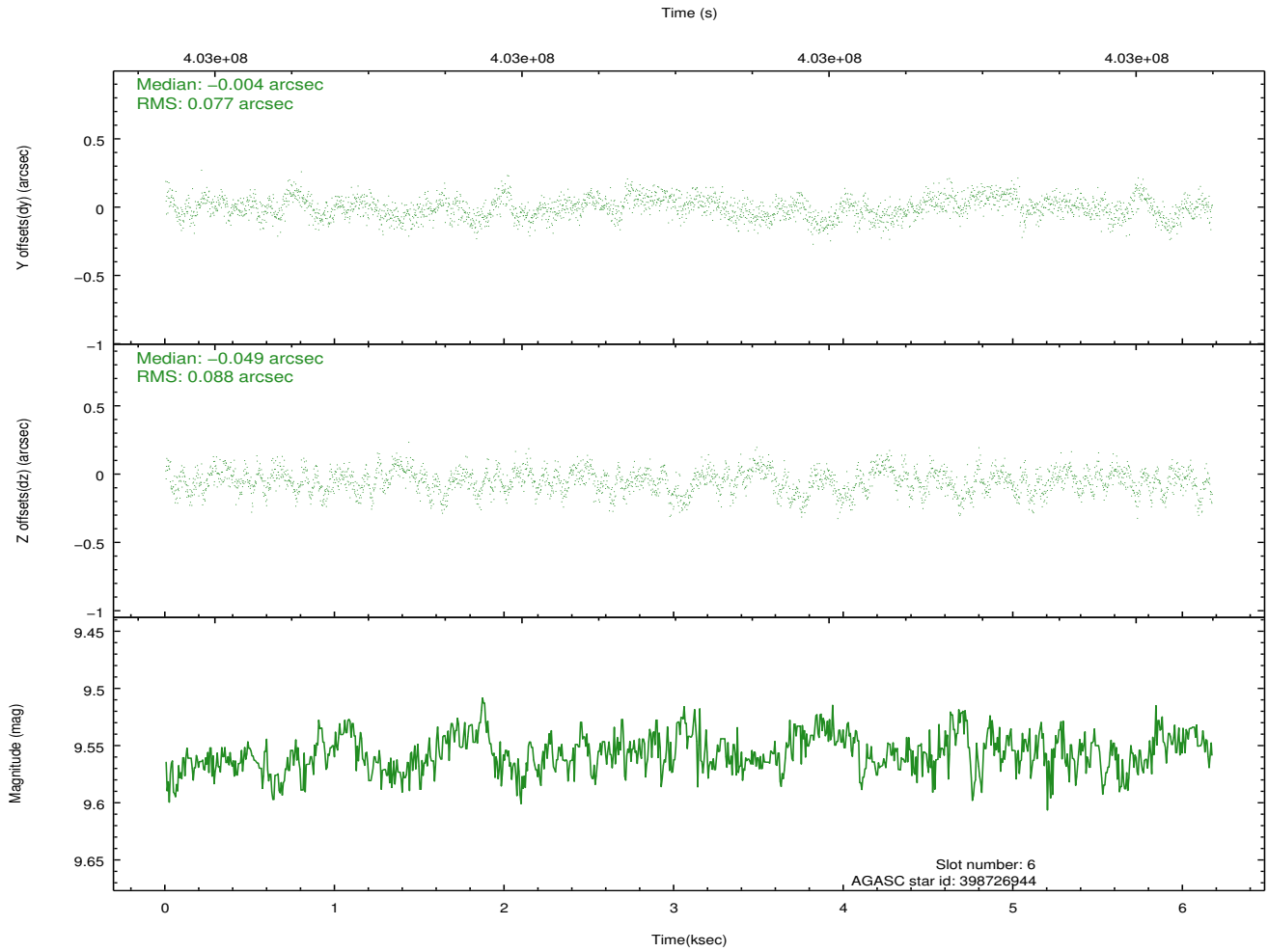
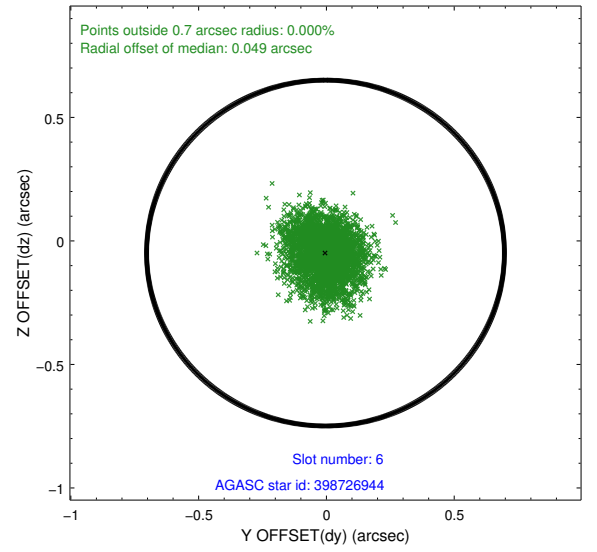
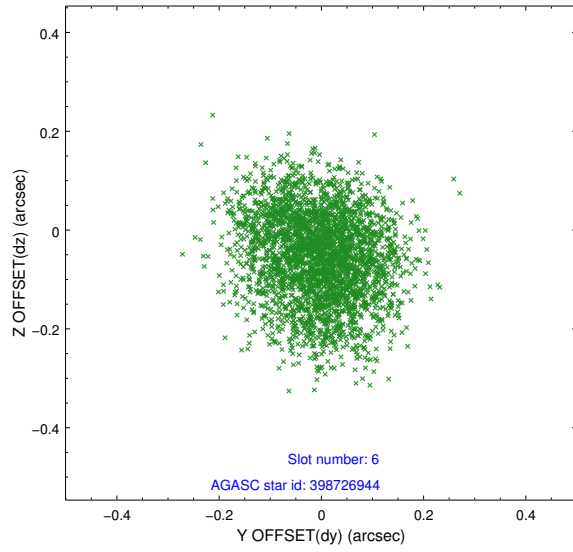
2.4.2 Slot 4



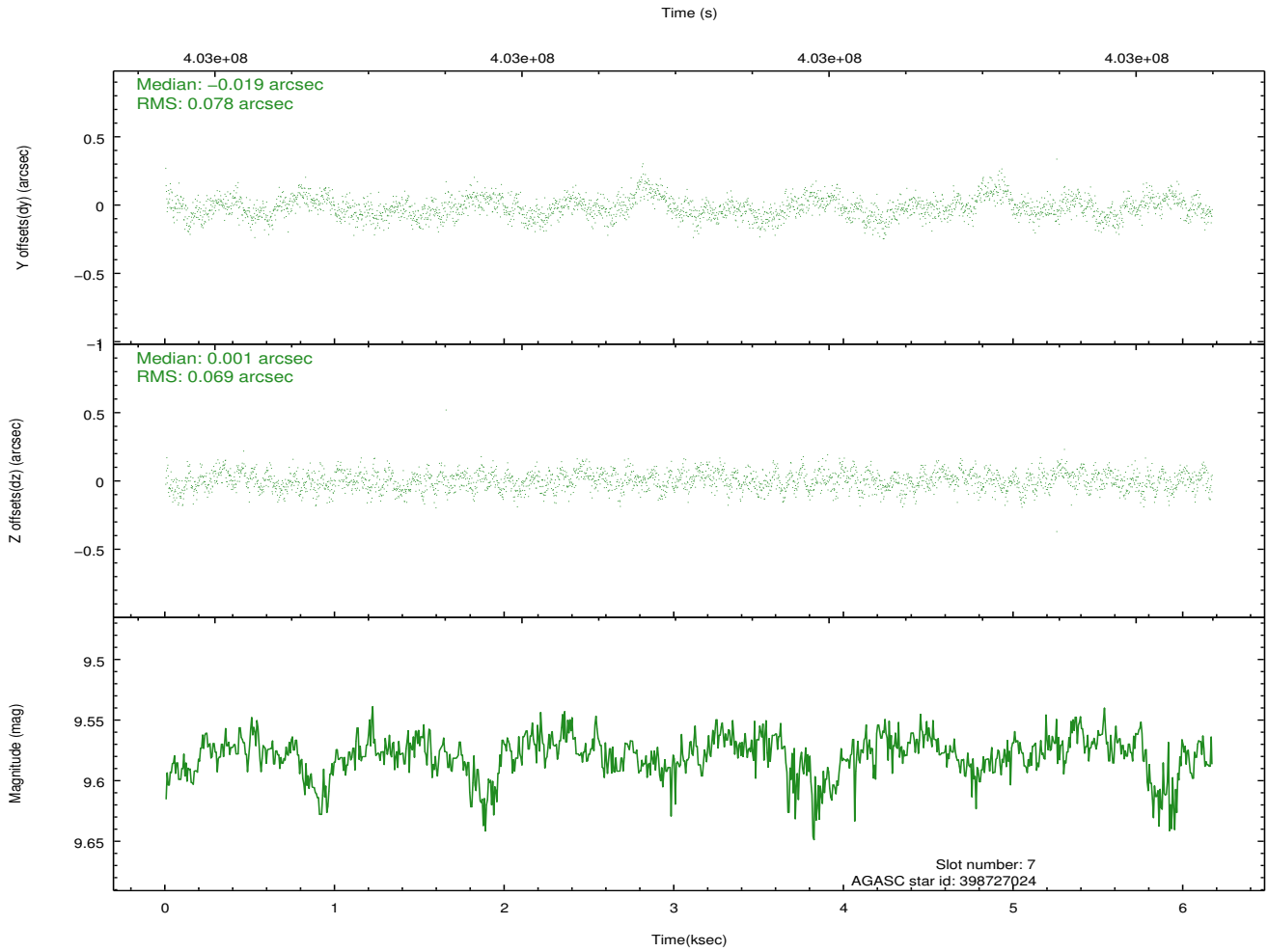
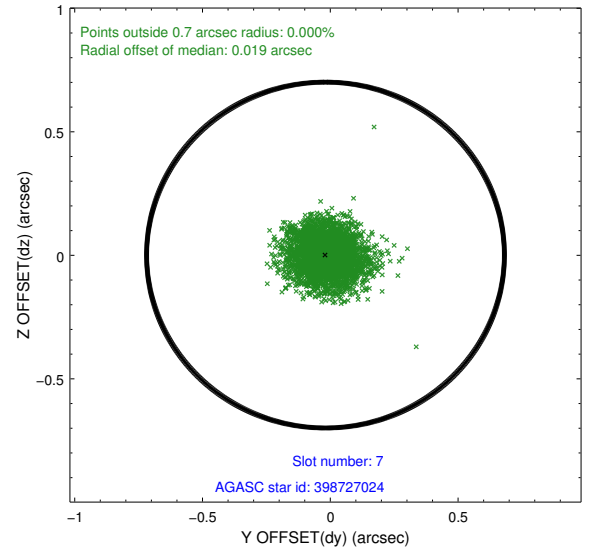
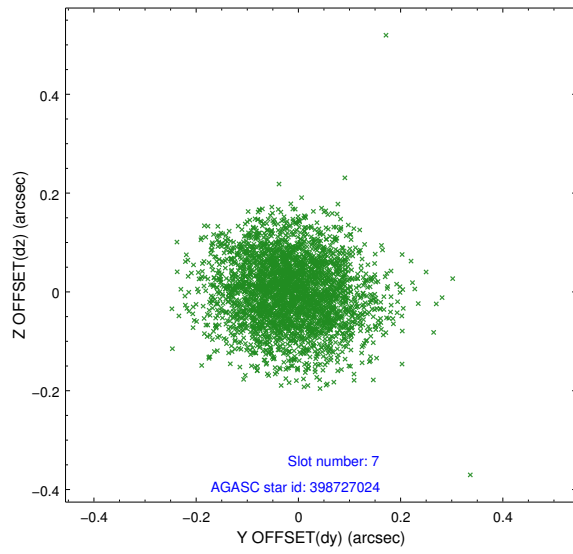
2.4.3 Slot 5



2.4.4 Slot 6

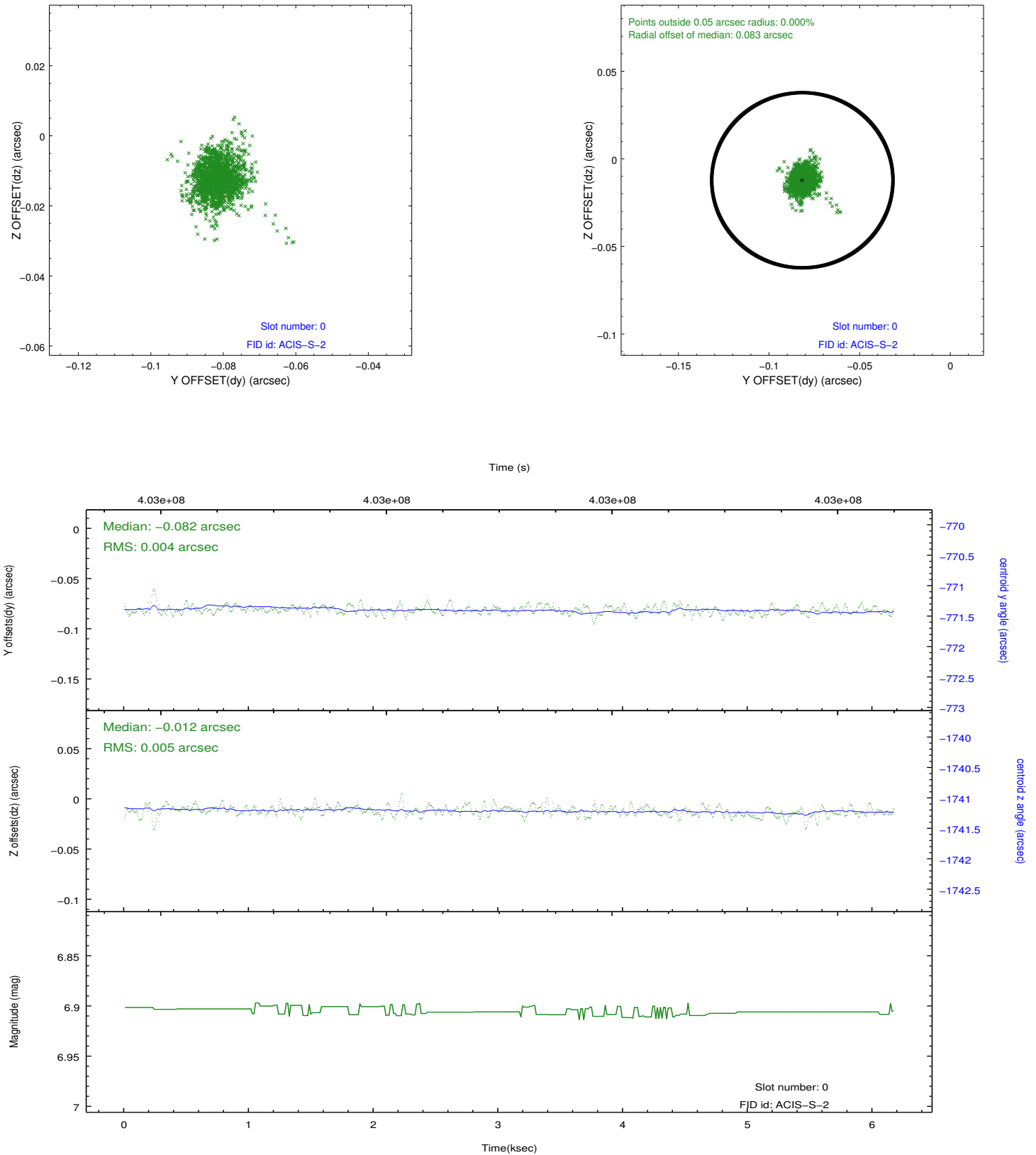


2.4.5 Slot 7

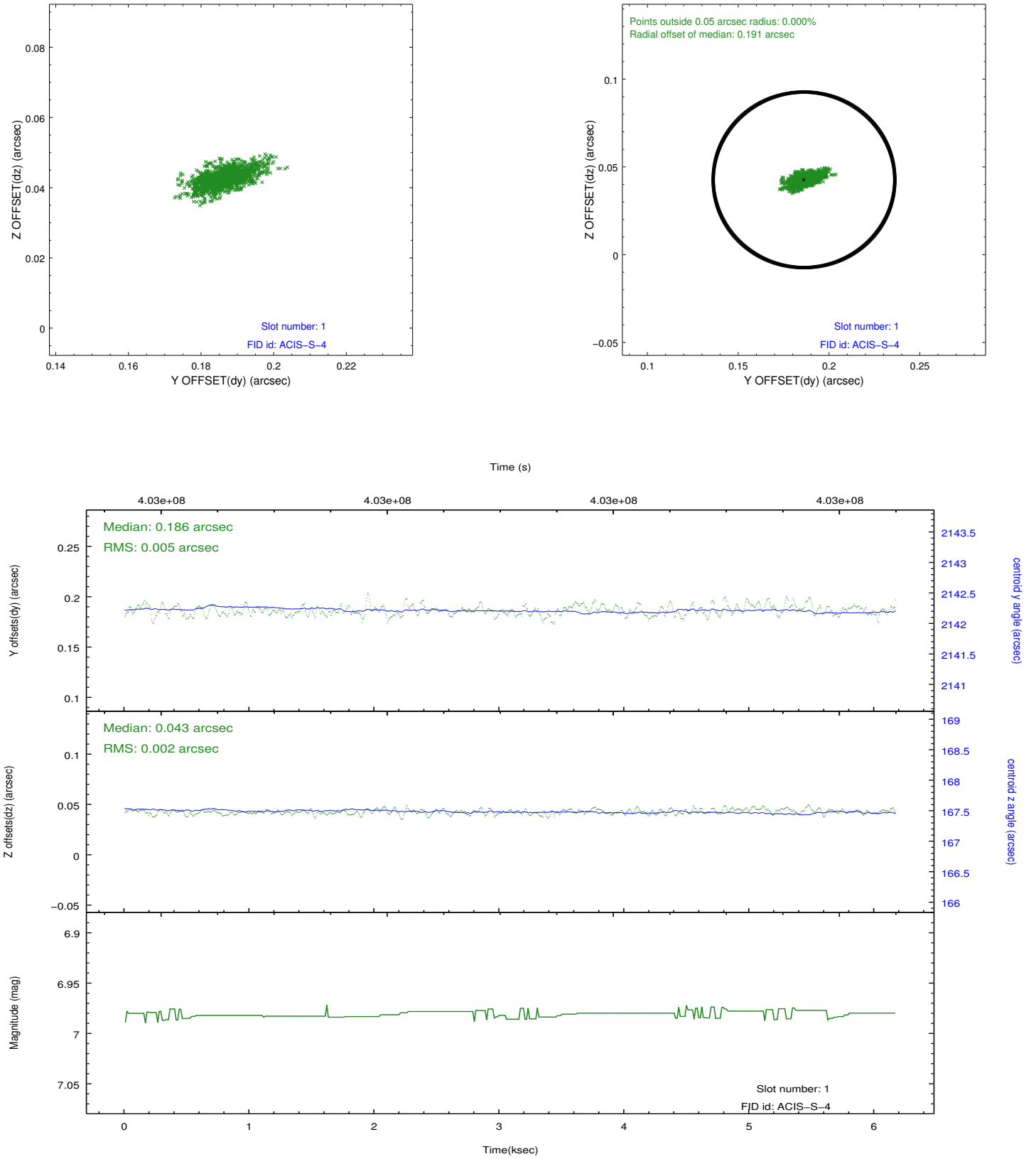


2.5 FID Slots

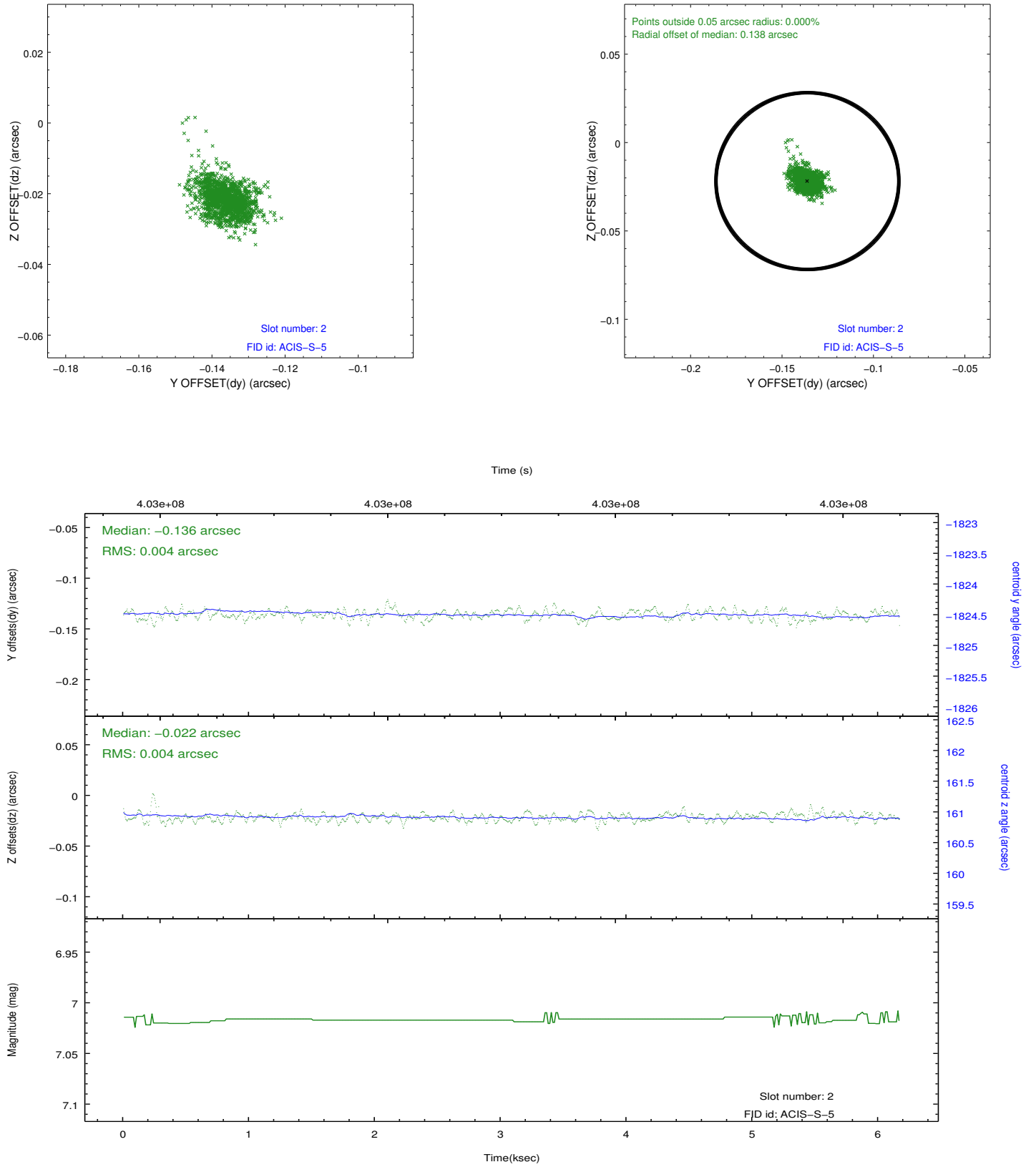
2.5.1 Slot 0



2.5.2 Slot 1



2.5.3 Slot 2



A Summary

A.1 Status

V&V Scientist	Jen Lauer
V&V Date (YYYY-MM-DD)	2012.07.12
V&V Edition	1
V&V Disposition and Status	OK
V&V Charge Time	6.0469928171039

A.2 Comments