

V&V Reference Report

L2 ASCDS Version : 8.4.4

Observation 10414 - L2 Version 2
Chandra X-Ray Center

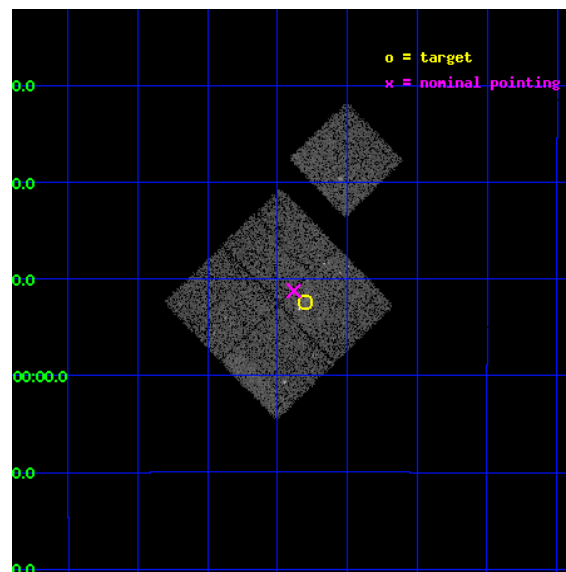
L2 Processing Date : May 31 2012

Contents

1	Front	2
2	OBI	3
2.1	OBI	3
2.1.1	Images	3
2.1.2	Bias	3
2.1.3	Parameters	4
2.1.4	Events	4
2.2	Compared Parameters	5
2.3	Aspect	6
2.4	Star Slots	9
2.4.1	Slot 3	9
2.4.2	Slot 4	10
2.4.3	Slot 5	11
2.4.4	Slot 6	12
2.4.5	Slot 7	13
2.5	FID Slots	14
2.5.1	Slot 0	14
2.5.2	Slot 1	15
2.5.3	Slot 2	16
A	Summary	17
A.1	Status	17
A.2	Comments	17

1 Front

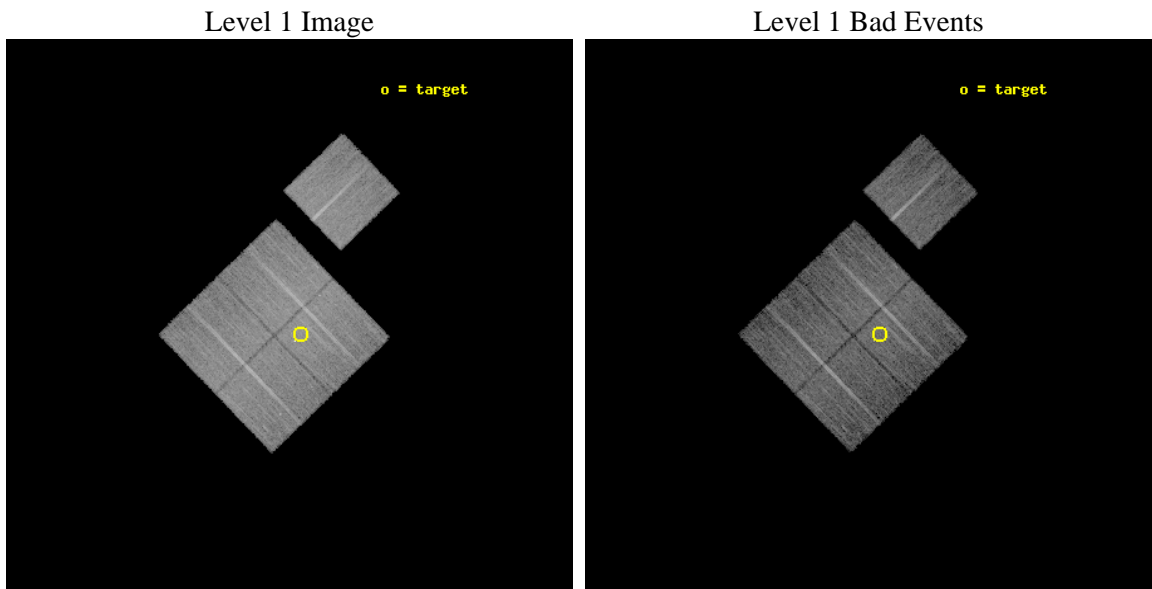
seq_num	800775	Sequence number
obs_id	10414	Observation id
title	MACSJ1147.3-1252: An extremely X-ray luminous cluster at z=0.58?	P
observer	Dr. Harald Ebeling	Principal investigator
object	MACSJ1147.3-1252	Source name
dtcycle	0	
cycle	P	events from which exps? Prim/Second/Both
ra_targ	176.824583	Observer's specified target RA [deg]
dec_targ	-12.872778	Observer's specified target Dec [deg]
ra_nom	176.84564932311	Nominal RA [deg]
dec_nom	-12.854165025854	Nominal Dec [deg]
roll_nom	45.963668487418	Nominal Roll [deg]
revision	2	Processing version of data
ontime	10042.820315659	Sum of GTIs [s]
livetime	9911.6034748182	Livetime [s]
ontime0	10036.415185094	Sum of GTIs [s]
ontime1	10039.597225428	Sum of GTIs [s]
ontime2	10039.638265371	Sum of GTIs [s]
ontime3	10042.820315659	Sum of GTIs [s]
ontime6	10039.515155315	Sum of GTIs [s]
l2events	39528	Number of level 2 events



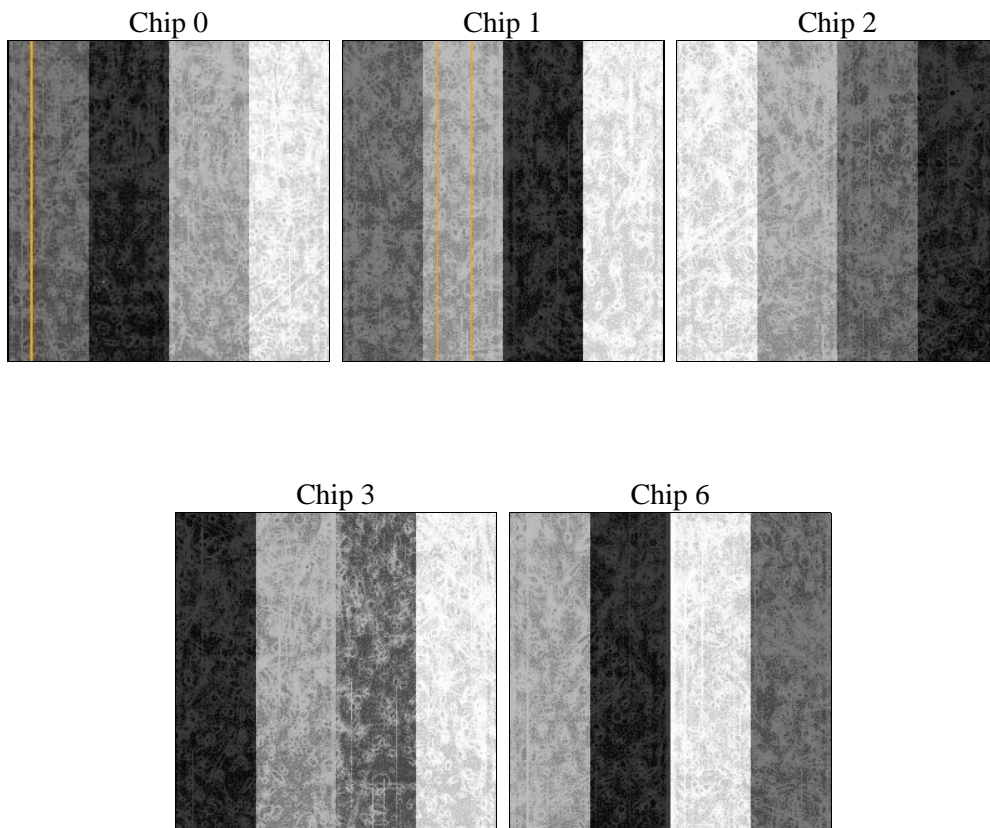
2 OBI

2.1 OBI

2.1.1 Images



2.1.2 Bias



2.1.3 Parameters

obi_num	0	Obi number	sched_exp_time	10000.000000	[s] Scheduled observation exposure time
ascdsver	8.4.4	Processing system revision	ontime	10042.820315659	Sum of GTIs [s]
caldbver	4.4.9	 	ontime0	10036.415185094	Sum of GTIs [s]
date	2012-05-31T02:24:44	Date and time of file creation	ontime1	10039.597225428	Sum of GTIs [s]
revision	2	Processing version of data	ontime2	10039.638265371	Sum of GTIs [s]
			ontime3	10042.820315659	Sum of GTIs [s]
			ontime6	10039.515155315	Sum of GTIs [s]
			l1events	423949	Number of level 1 events

2.1.4 Events

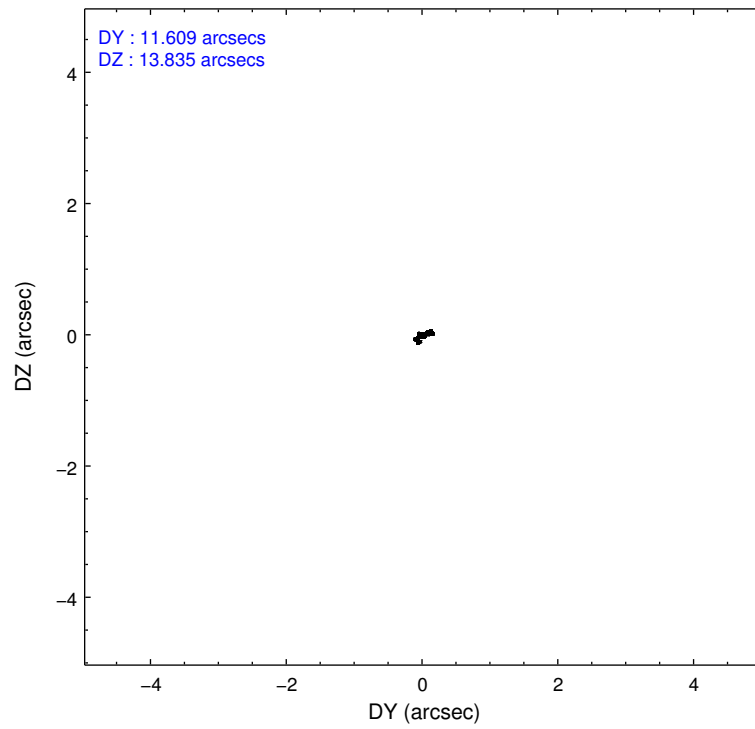
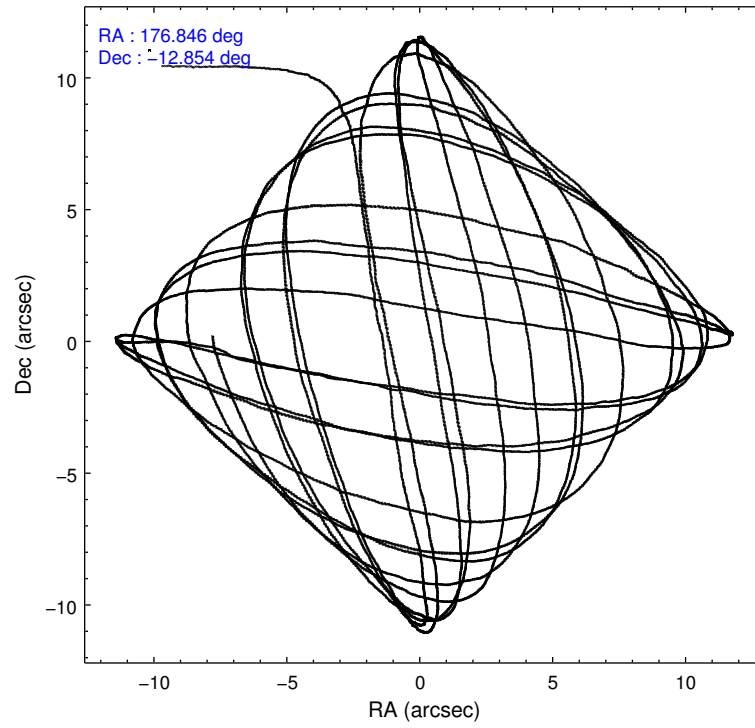
	ccd 0	ccd 1	ccd 2	ccd 3	ccd 6
level 1 events	80502	80149	88736	87875	86687
rejected events	71604	70195	79884	77593	77661
rejected %	88%	87%	90%	88%	89%

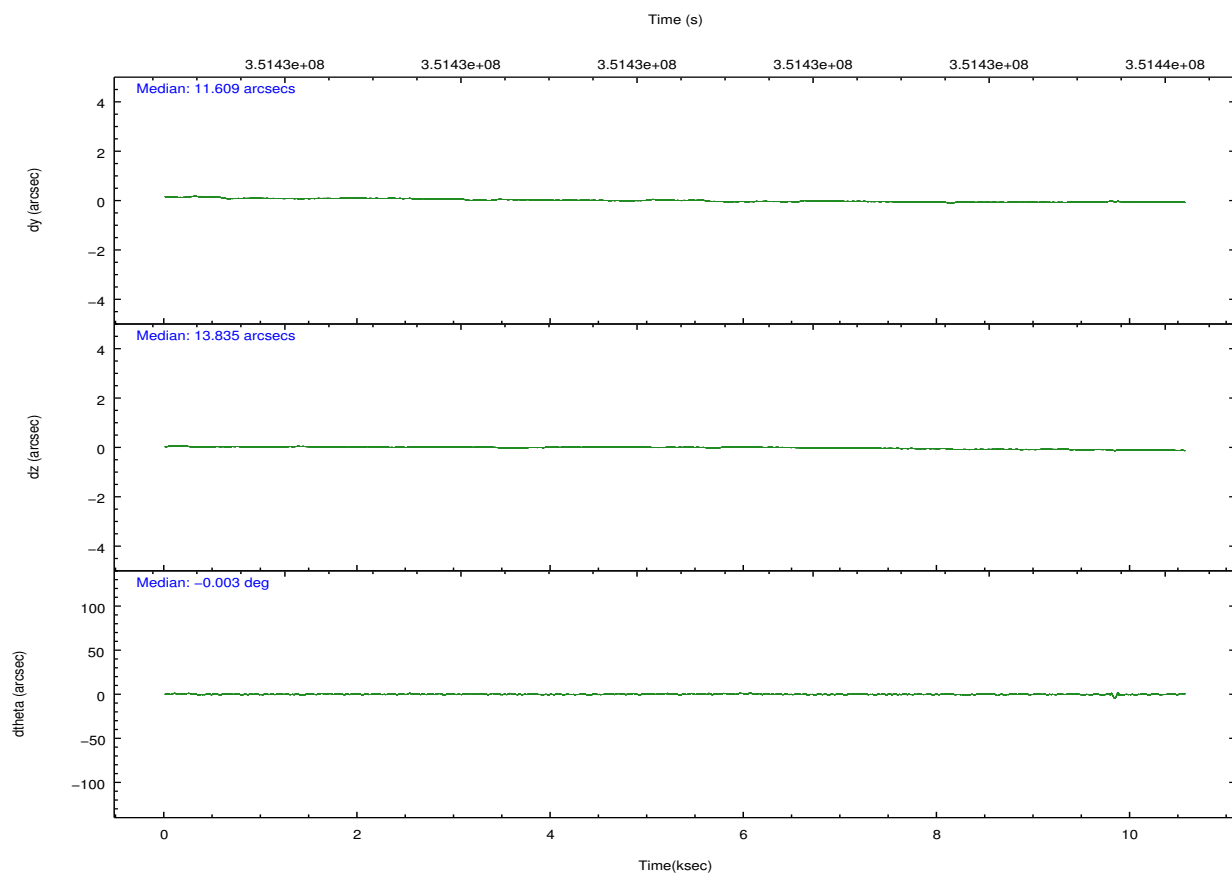
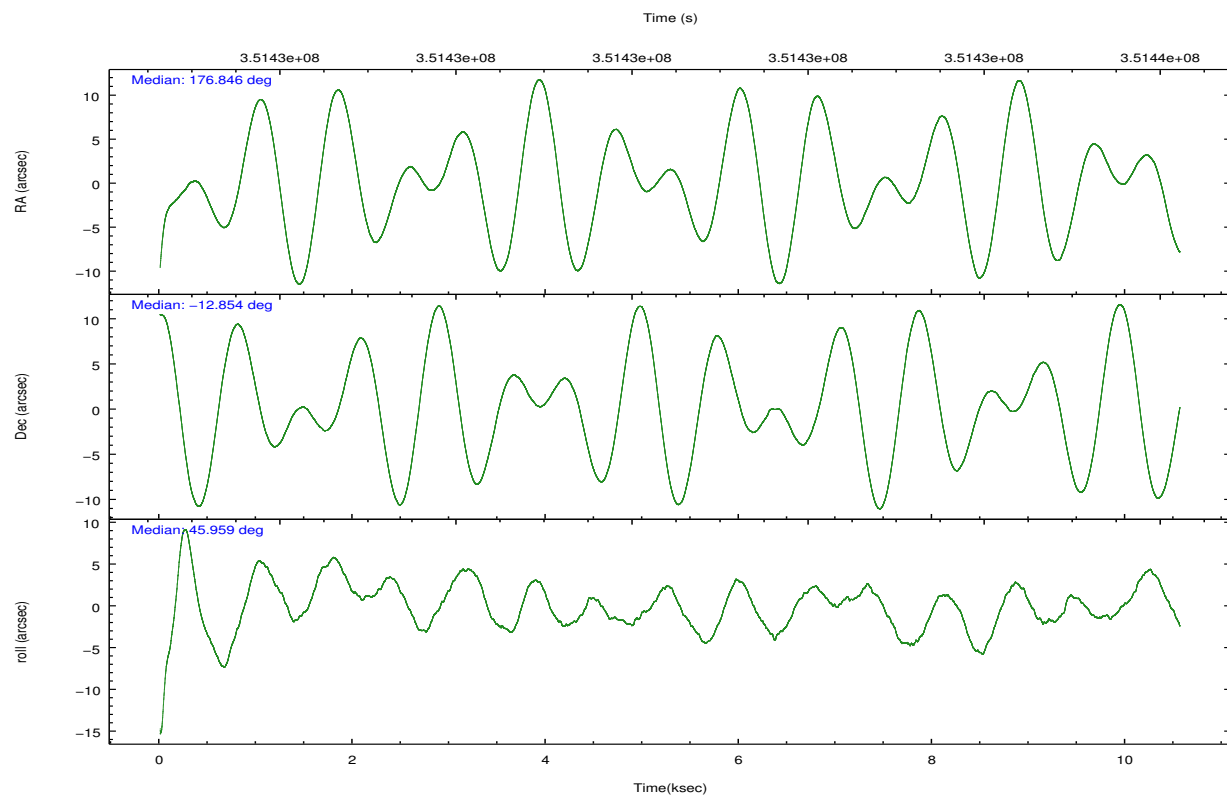
	ccd 0	ccd 1	ccd 2	ccd 3	ccd 6
grade 0 events	3048	3665	3068	4513	3100
	3%	4%	3%	5%	3%
grade 1 events	54	43	67	109	47
	0%	0%	0%	0%	0%
grade 2 events	2204	2208	2165	2069	1973
	2%	2%	2%	2%	2%
grade 3 events	982	1028	966	978	989
	1%	1%	1%	1%	1%
grade 4 events	898	1036	949	937	1015
	1%	1%	1%	1%	1%
grade 5 events	3110	3364	3140	3710	3494
	3%	4%	3%	4%	4%
grade 6 events	1774	2022	1714	1795	1955
	2%	2%	1%	2%	2%
grade 7 events	68432	66783	76667	73764	74114
	85%	83%	86%	83%	85%

2.2 Compared Parameters

Parameter	Planned	Actual	Parameter	Planned	Actual
Instrument	ACIS	ACIS	Obspar format version number	7	7
Detector	ACIS-01236	ACIS-01236	Obspar file type	PREDICTED	ACTUAL
Grating	NONE	NONE	Obspar update status	NONE	UPDATED
Data mode	VFAINT	VFAINT	Number of optional ACIS chips dropped	0	0
Observation mode	POINTING	POINTING	On-chip summing requested	N	N
[deg] Pointing RA	176.838961	176.84564932311	Subarray requested	NONE	NONE
[deg] Pointing Dec	-12.880842	-12.85416502585407	Alternating exposures requested	N	N
[deg] Pointing Roll	45.753496	45.96366848741773	[s] Primary exposure time	0.000000	3.1
[mm] SIM focus pos	-0.782348	-0.7809083437167272			
[mm] SIM defocus	0	0.001439871863259334			
[mm] SIM translation stage pos	-229.442463	-229.4438428438578			
[mm] SIM translation stage offset	-4.15	-4.148610159071865			
[s] Observation start time (MET)	351425545.184000	351424394.85913			
Observation start date	2009-02-19T10:11:19	2009-02-19T09:53:14			
[s] Observation end time (MET)	351435545.184000	351436580.05973			
Observation end date	2009-02-19T12:57:59	2009-02-19T13:16:20			
Read mode	TIMED	TIMED			

2.3 Aspect



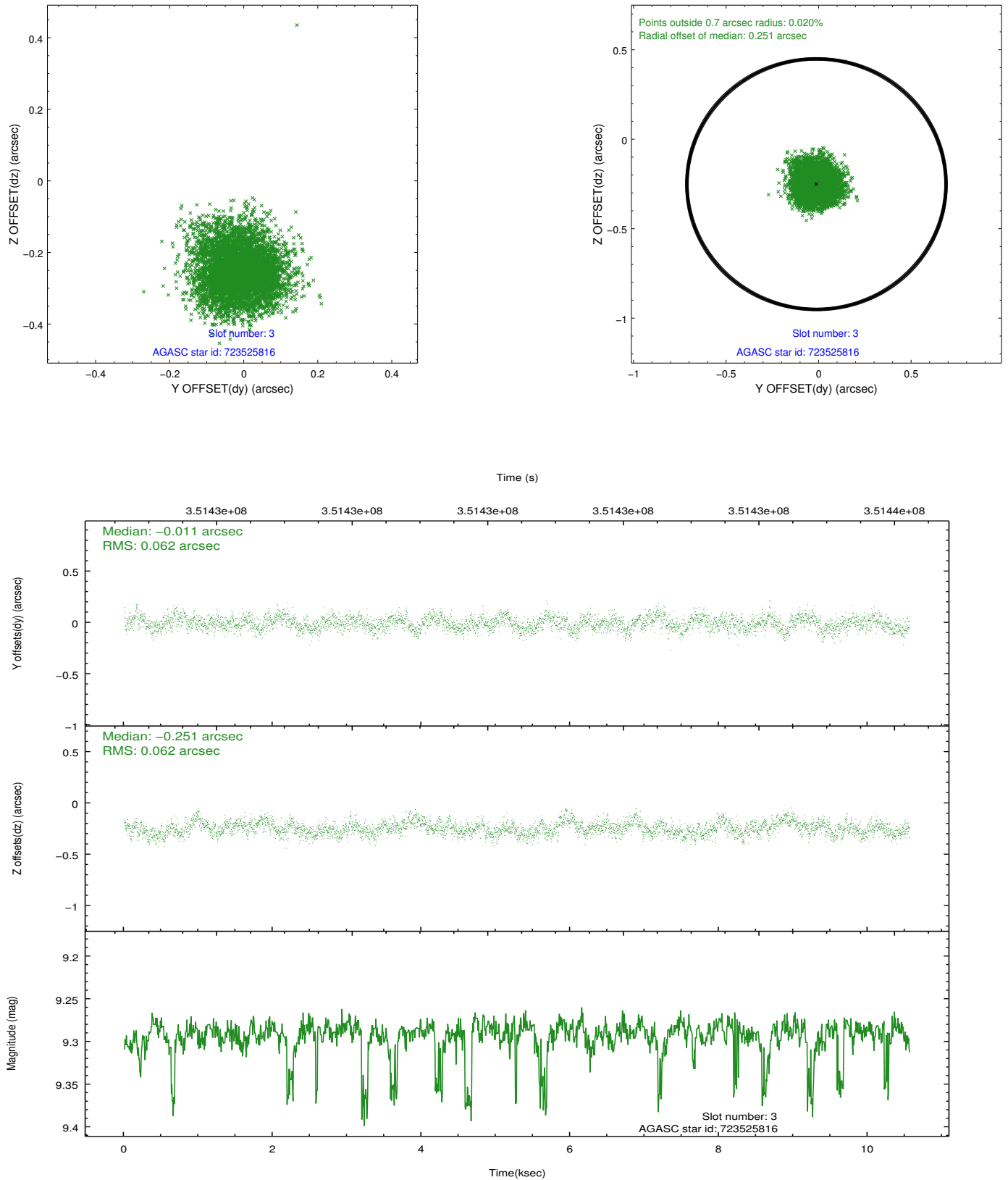


Slot Statistics

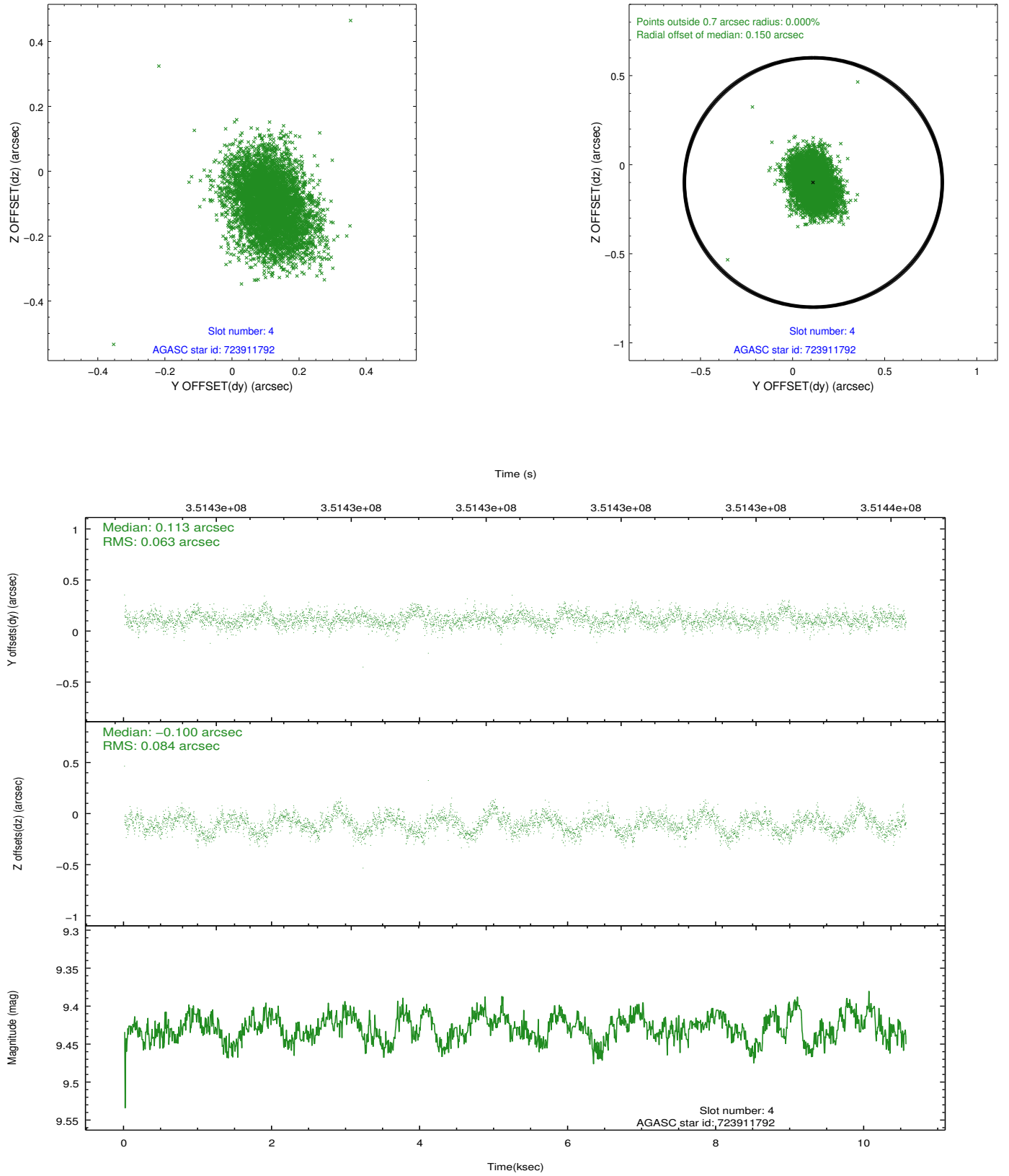
slot	status	id	mag	n_pts	med_dy	med_dz	dr1	dr2	ra	dec	mean_y	mean_z
0	FID	ACIS-I-1	7.03	2575	0.063	-0.011	0.007	0.011	0.000000	0.000000	927.94	-922.50
1	FID	ACIS-I-5	7.03	2576	-0.220	0.068	0.006	0.010	0.000000	0.000000	-1820.21	974.74
2	FID	ACIS-I-6	7.04	2575	0.066	0.014	0.007	0.011	0.000000	0.000000	392.90	1619.79
3	GUIDE	723525816	9.29	5124	-0.011	-0.251	0.094	0.149	177.127363	-12.455272	1804.94	342.50
4	GUIDE	723911792	9.43	5143	0.113	-0.100	0.111	0.179	177.108793	-13.013796	318.20	-1012.04
5	GUIDE	723913808	10.08	5129	-0.142	0.123	0.141	0.219	176.473254	-12.880439	-894.78	919.89
6	GUIDE	723913920	9.38	5151	-0.127	0.346	0.097	0.158	177.358146	-12.810351	1452.45	-1128.90
7	GUIDE	723911536	8.92	5145	0.166	-0.117	0.090	0.152	177.652395	-12.706528	2440.27	-1611.07

2.4 Star Slots

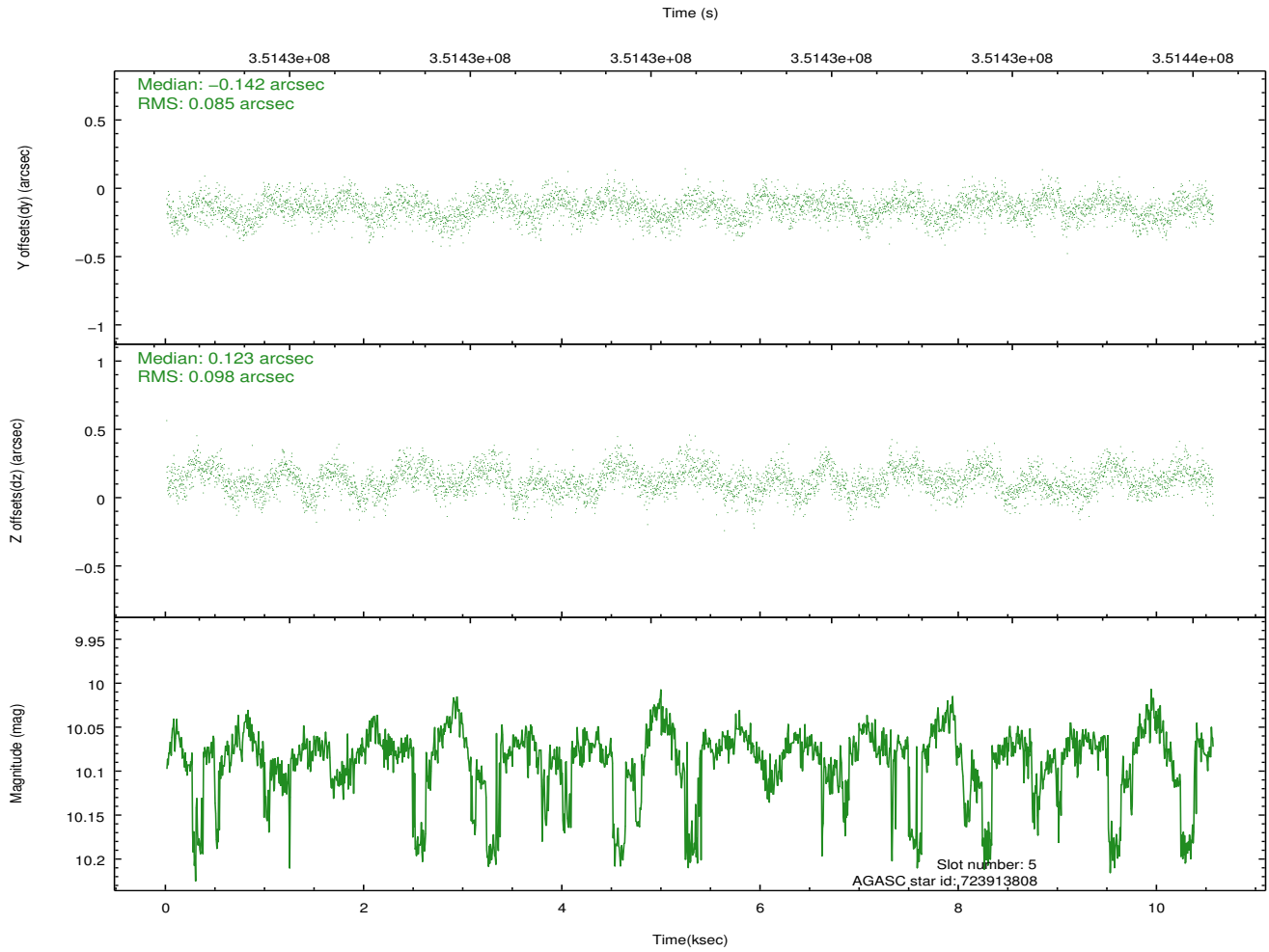
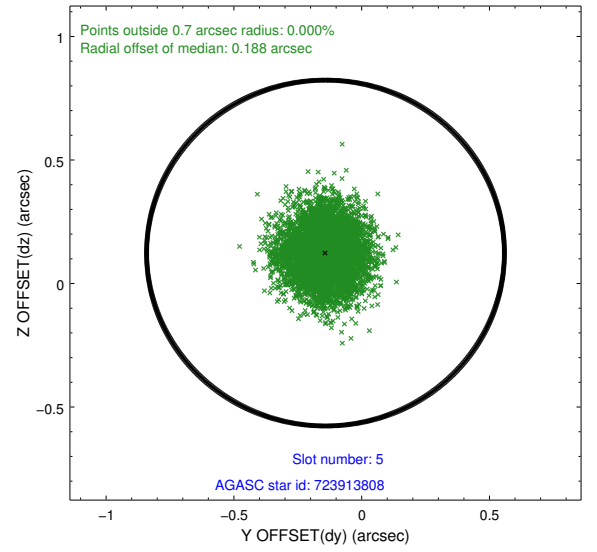
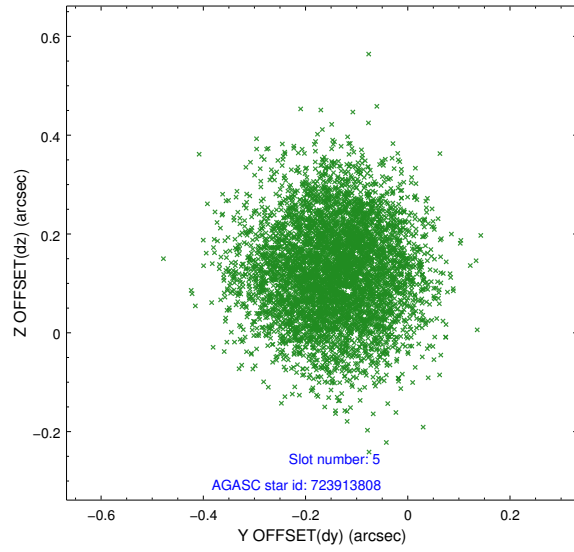
2.4.1 Slot 3



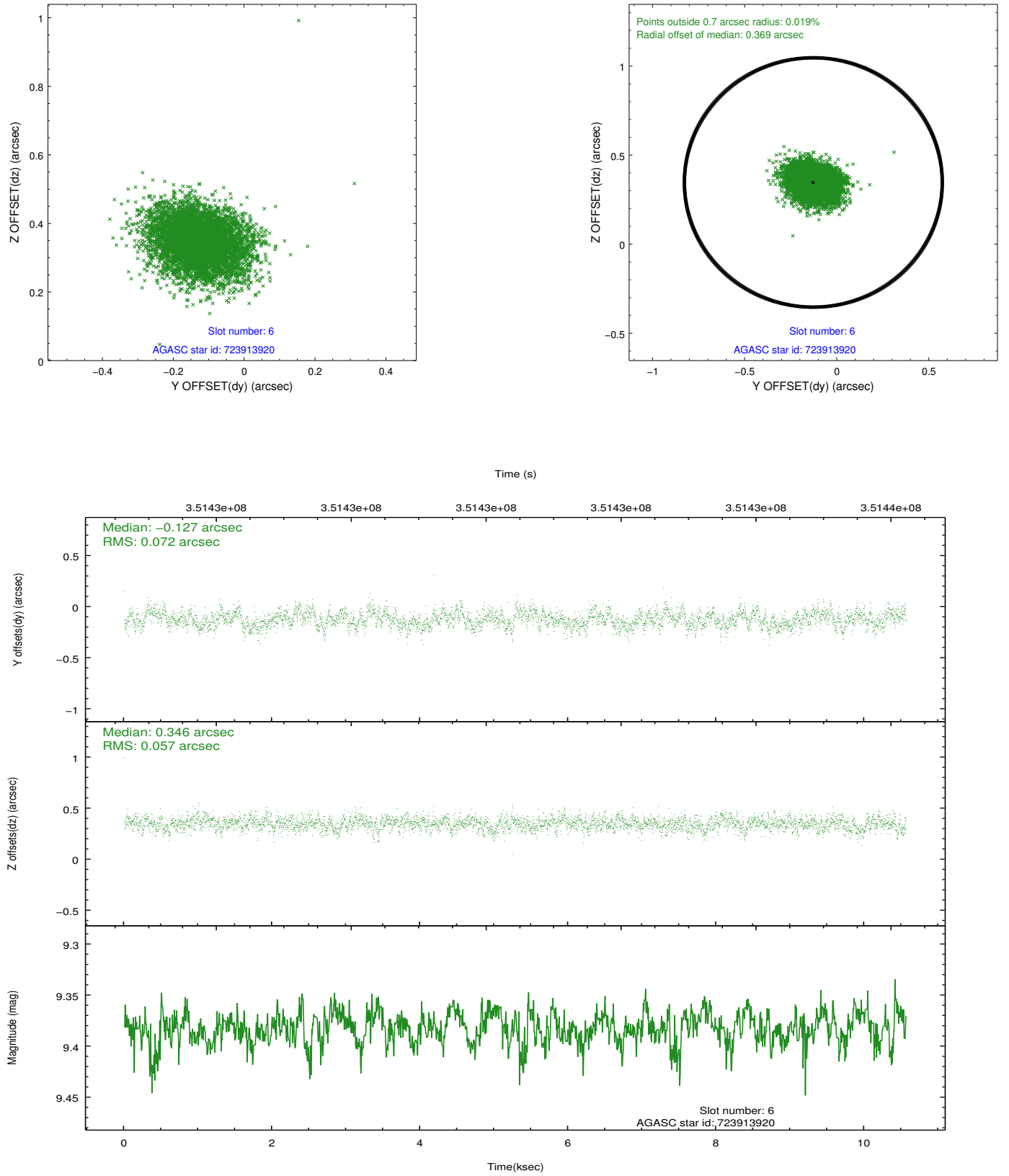
2.4.2 Slot 4



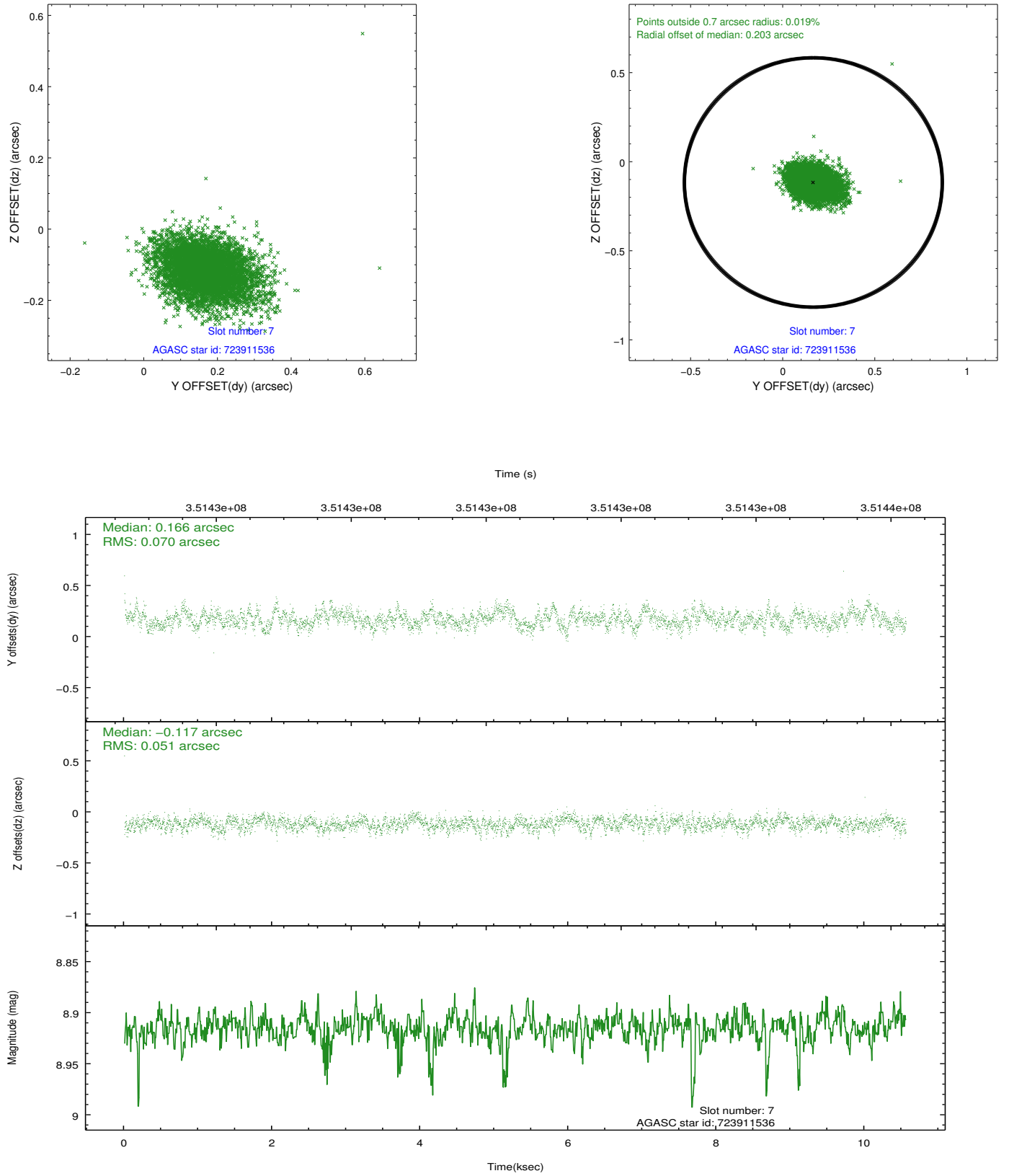
2.4.3 Slot 5



2.4.4 Slot 6

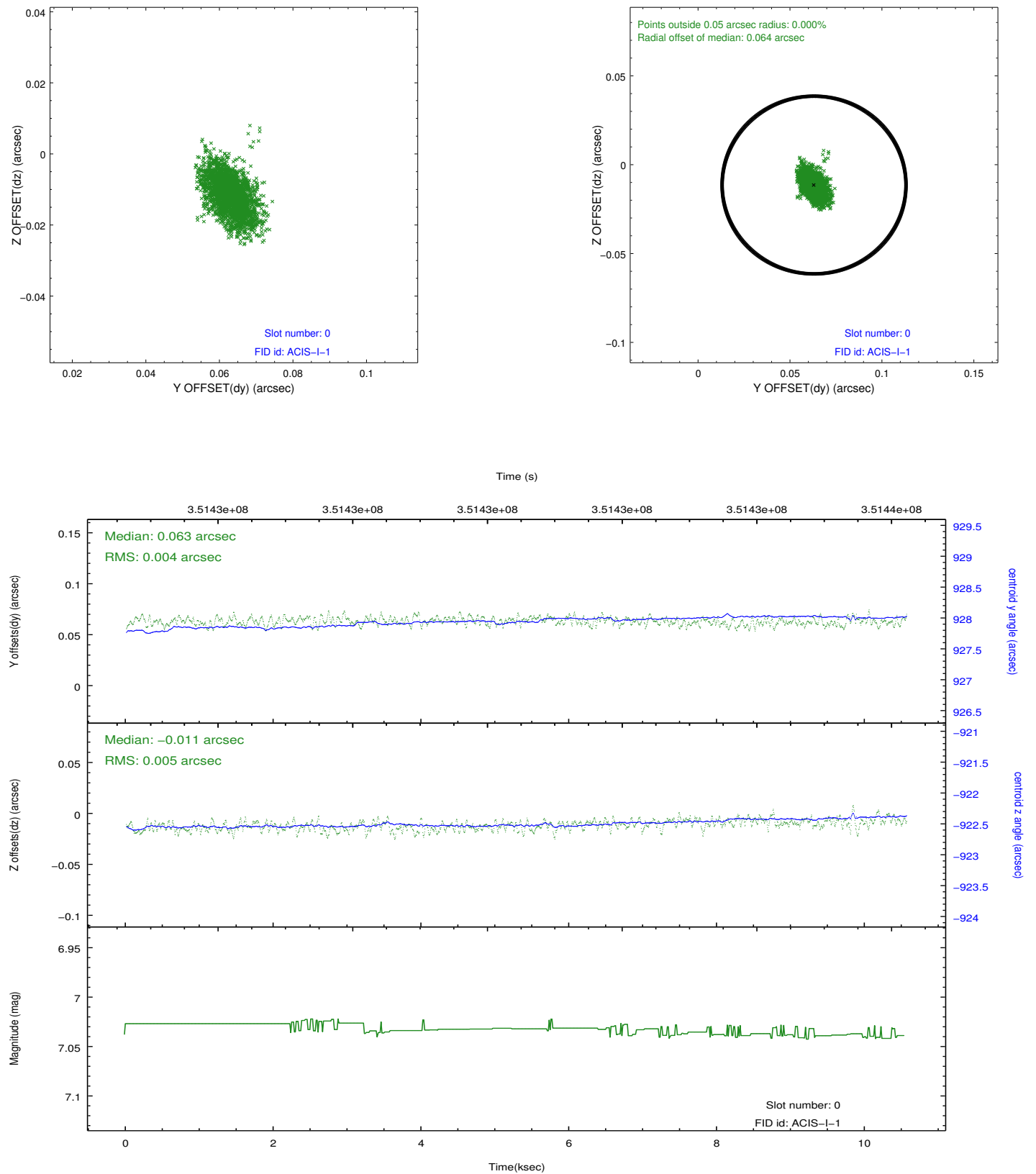


2.4.5 Slot 7

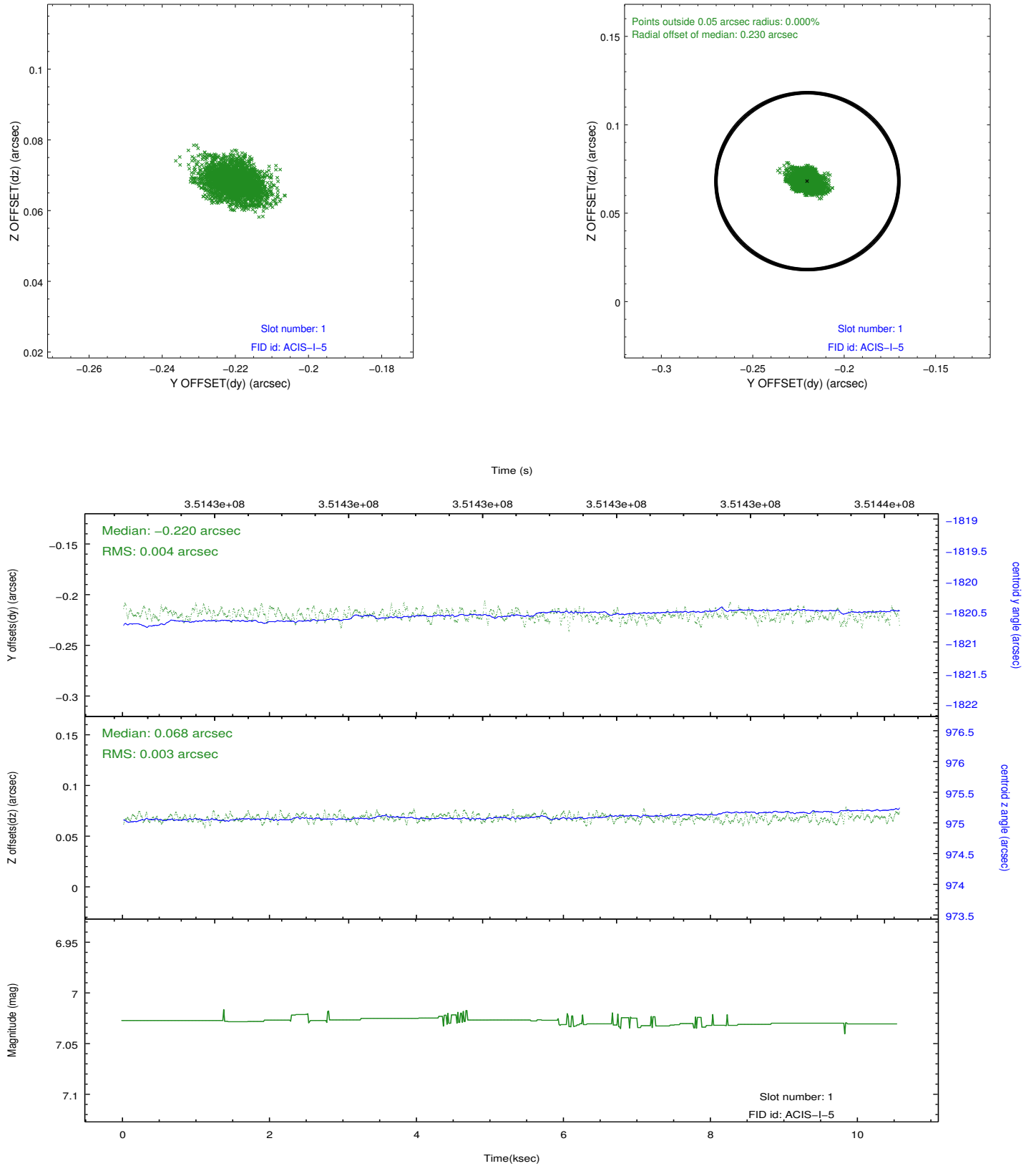


2.5 FID Slots

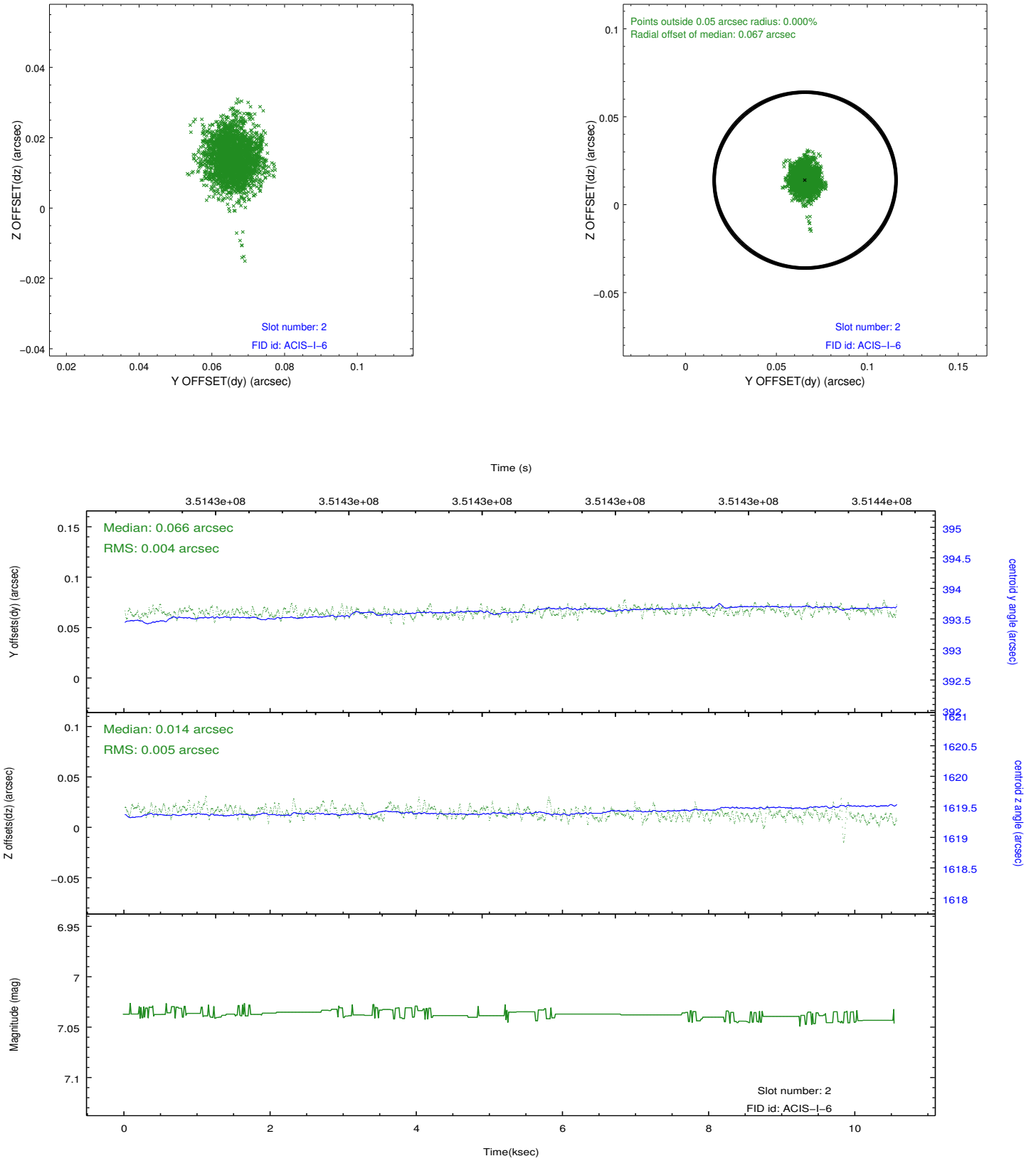
2.5.1 Slot 0



2.5.2 Slot 1



2.5.3 Slot 2



A Summary

A.1 Status

V&V Scientist	Jen Lauer
V&V Date (YYYY-MM-DD)	2012.06.05
V&V Edition	1
V&V Disposition and Status	OK
V&V Charge Time	10.044

A.2 Comments