

# V&V Reference Report

## L2 ASCDS Version : 8.4.4

Observation 10354 - L2 Version 2  
Chandra X-Ray Center

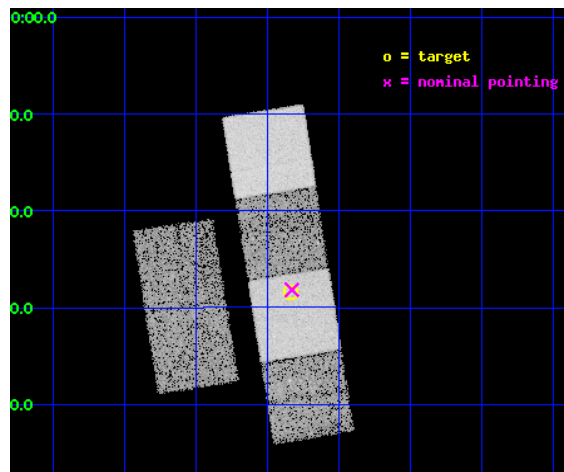
L2 Processing Date : Jun 1 2012

## Contents

<b>1</b>	<b>Front</b>	<b>2</b>
<b>2</b>	<b>OBI</b>	<b>3</b>
2.1	OBI . . . . .	3
2.1.1	Images . . . . .	3
2.1.2	Bias . . . . .	3
2.1.3	Parameters . . . . .	4
2.1.4	Events . . . . .	4
2.2	Compared Parameters . . . . .	5
2.3	Aspect . . . . .	6
2.4	Star Slots . . . . .	9
2.4.1	Slot 3 . . . . .	9
2.4.2	Slot 4 . . . . .	10
2.4.3	Slot 5 . . . . .	11
2.4.4	Slot 6 . . . . .	12
2.4.5	Slot 7 . . . . .	13
2.5	FID Slots . . . . .	14
2.5.1	Slot 0 . . . . .	14
2.5.2	Slot 1 . . . . .	15
2.5.3	Slot 2 . . . . .	16
<b>A</b>	<b>Summary</b>	<b>17</b>
A.1	Status . . . . .	17
A.2	Comments . . . . .	17

# 1 Front

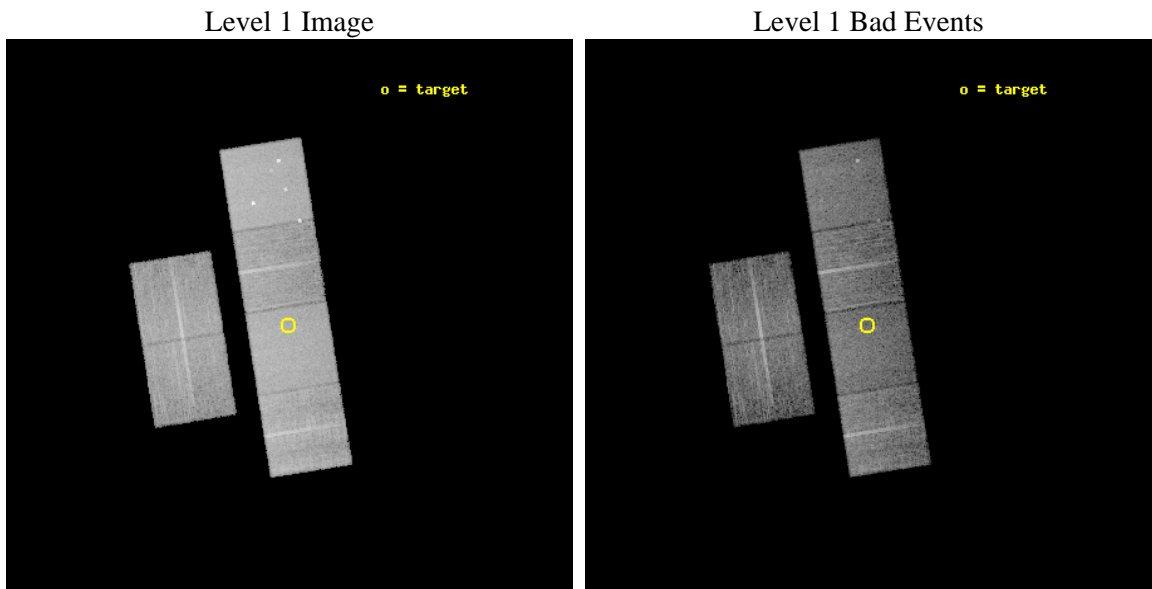
seq_num	701897	Sequence number
obs_id	10354	Observation id
title	Testing the Radiative-Driving Hypothesis of Quasar Outflows	Propos
observer	Dr. Rajib Ganguly	Principal investigator
object	SDSS J1413-0238	Source name
dtcycle	0	&#160
cycle	P	events from which exps? Prim/Second/Both
ra_targ	213.459167	Observer's specified target RA [deg]
dec_targ	-2.640583	Observer's specified target Dec [deg]
ra_nom	213.45733073739	Nominal RA [deg]
dec_nom	-2.6361290678264	Nominal Dec [deg]
roll_nom	80.959666576449	Nominal Roll [deg]
revision	2	Processing version of data
ontime	7747.199971199	Sum of GTIs [s]
livetime	7649.1002603599	Livetime [s]
ontime2	7747.199971199	Sum of GTIs [s]
ontime3	7747.199971199	Sum of GTIs [s]
ontime5	7747.199971199	Sum of GTIs [s]
ontime6	7747.199971199	Sum of GTIs [s]
ontime7	7747.199971199	Sum of GTIs [s]
ontime8	7743.9590009451	Sum of GTIs [s]
l2events	135850	Number of level 2 events



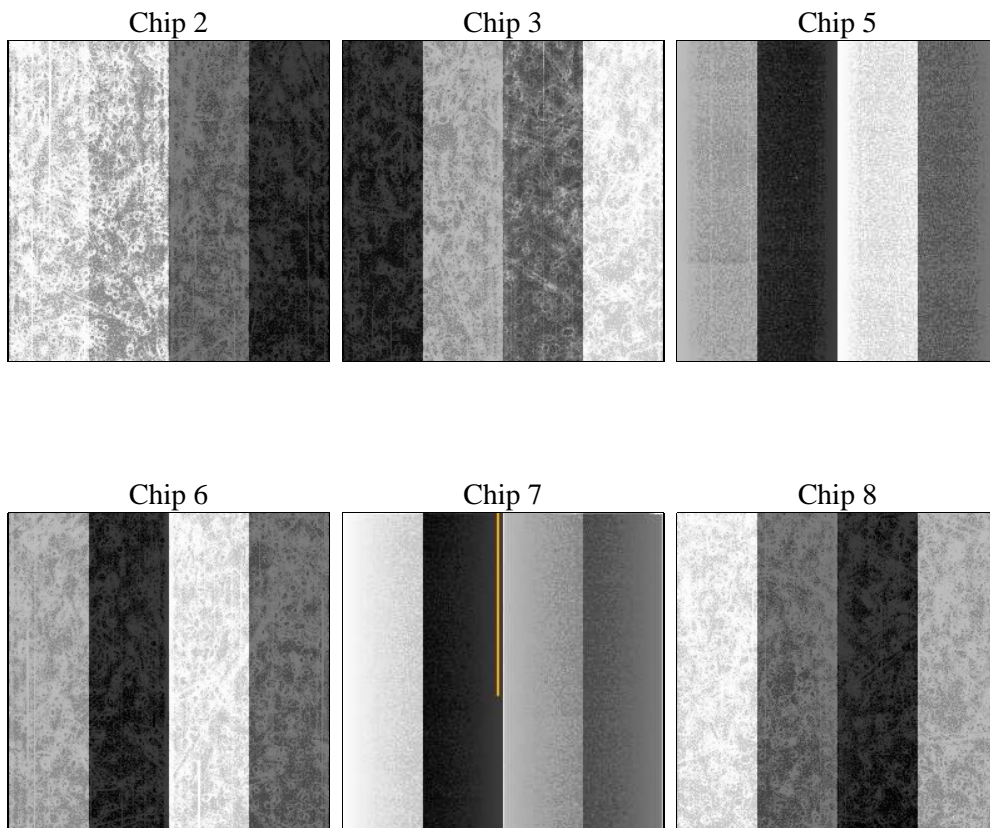
## 2 OBI

### 2.1 OBI

#### 2.1.1 Images



#### 2.1.2 Bias



### 2.1.3 Parameters

obi_num	0	Obi number	sched_exp_time	7992.664000	[s] Scheduled observation exposure time
ascdsver	8.4.4	Processing system revision	ontime	7747.199971199	Sum of GTIs [s]
caldsver	4.4.9	&#160	ontime2	7747.199971199	Sum of GTIs [s]
date	2012-06-02T00:23:14	Date and time of file creation	ontime3	7747.199971199	Sum of GTIs [s]
revision	2	Processing version of data	ontime5	7747.199971199	Sum of GTIs [s]
			ontime6	7747.199971199	Sum of GTIs [s]
			ontime7	7747.199971199	Sum of GTIs [s]
			ontime8	7743.9590009451	Sum of GTIs [s]
			l1events	584568	Number of level 1 events

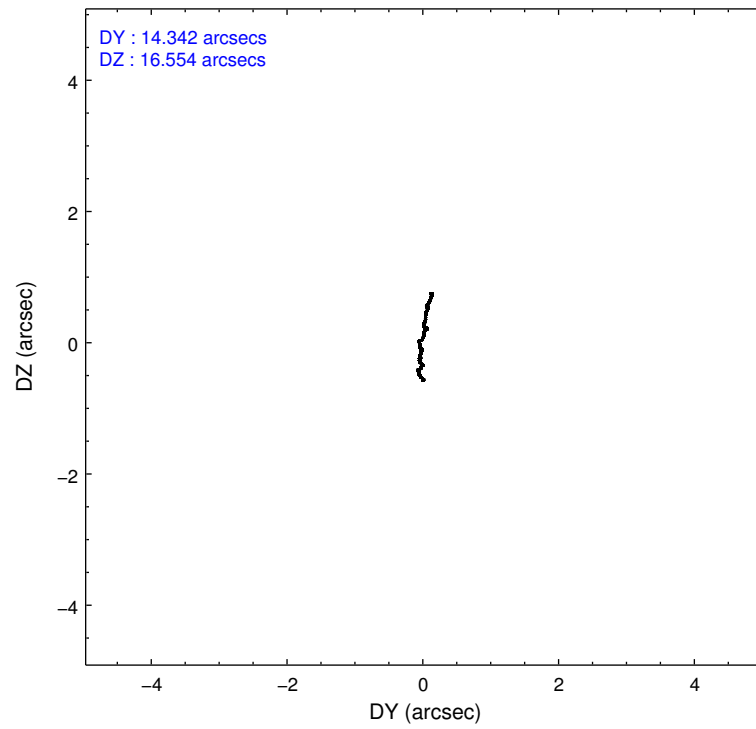
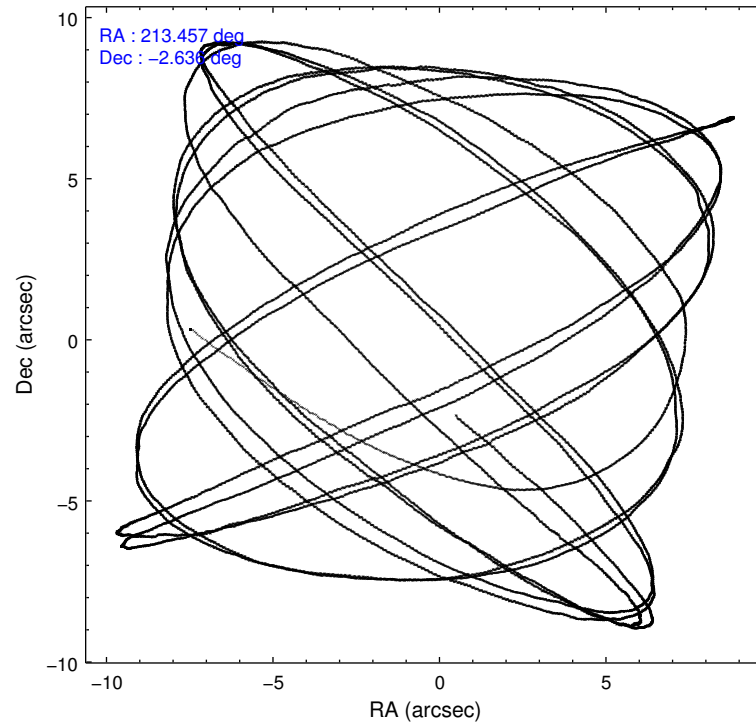
### 2.1.4 Events

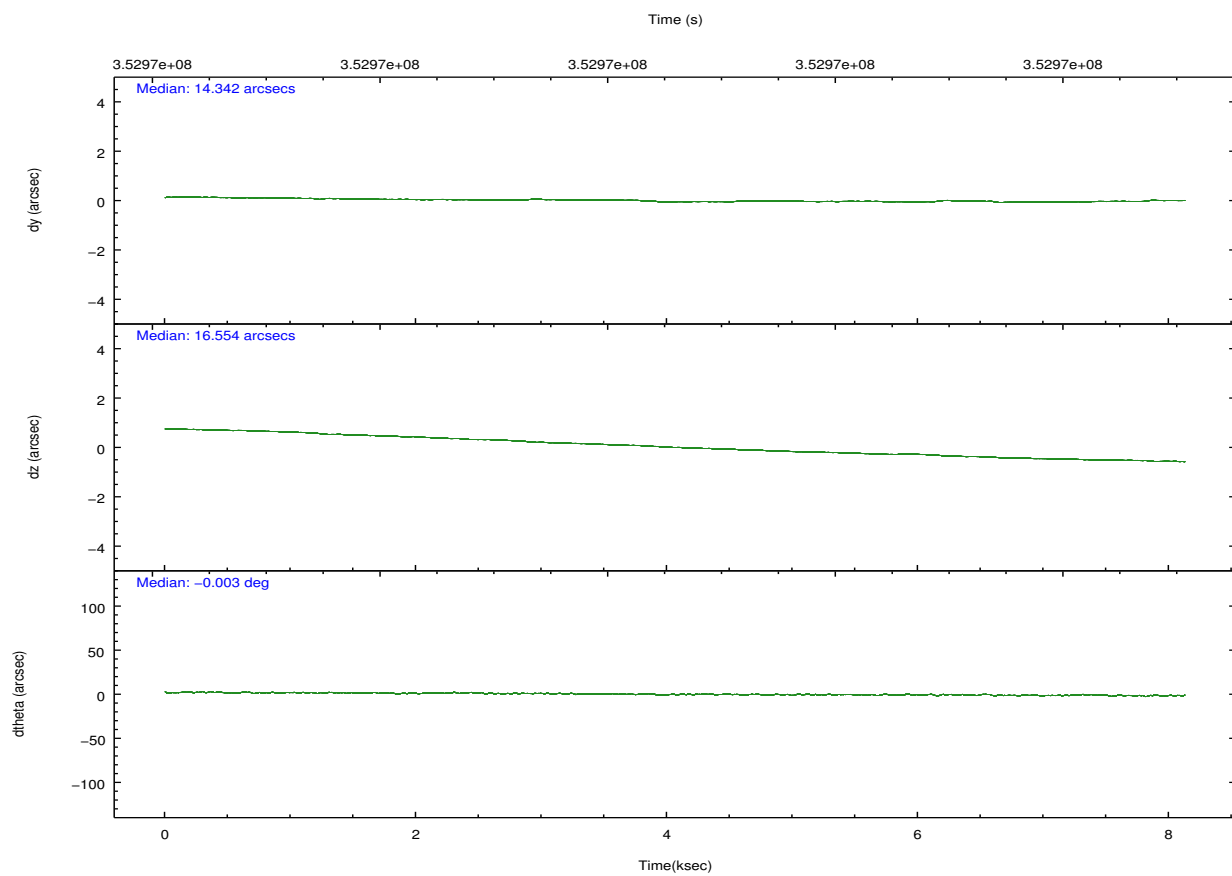
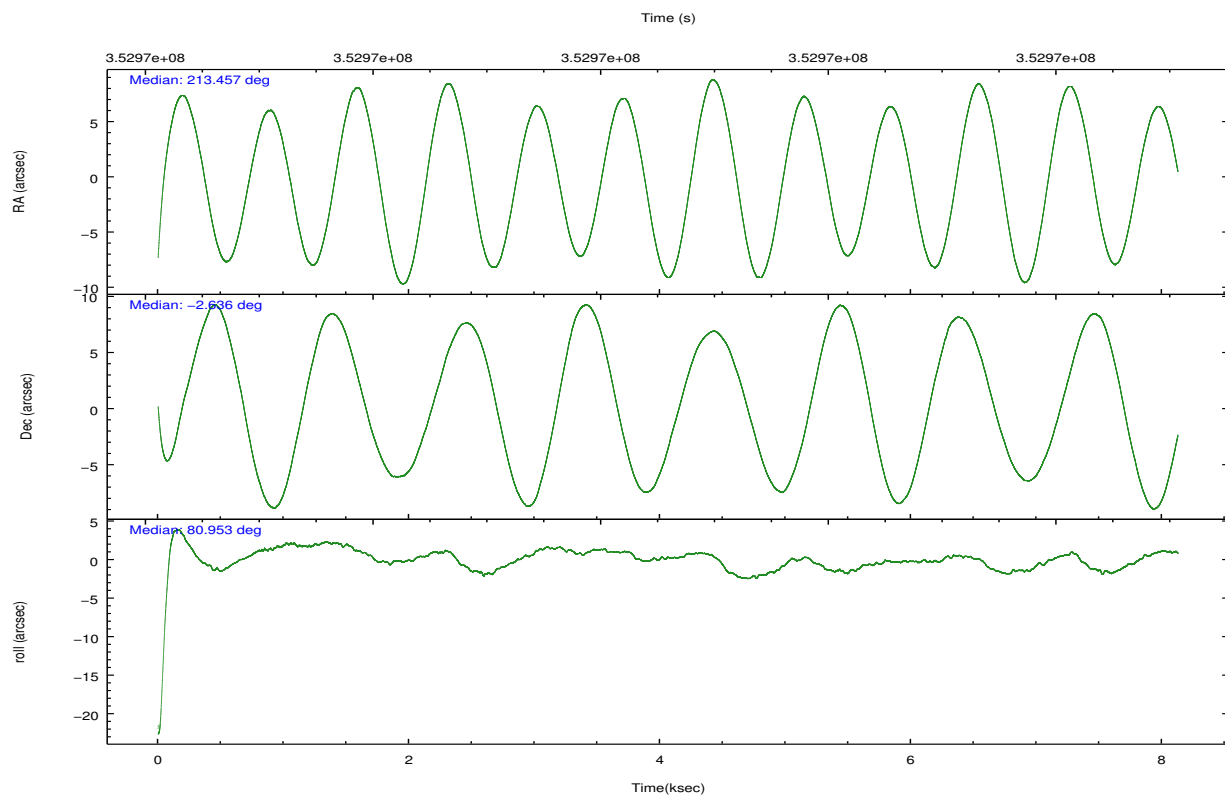
	ccd 2	ccd 3	ccd 5	ccd 6	ccd 7	ccd 8		ccd 2	ccd 3	ccd 5	ccd 6	ccd 7	ccd 8
level 1 events	81098	75741	128675	80428	112549	106077	grade 0 events	3989	4172	7167	4002	3919	7319
rejected events	71597	66231	67700	70501	65706	82629		4%	5%	5%	4%	3%	6%
rejected %	88%	87%	52%	87%	58%	77%	grade 1 events	66	44	254	46	100	96
								0%	0%	0%	0%	0%	0%
							grade 2 events	2049	1865	18748	2231	9812	5390
								2%	2%	14%	2%	8%	5%
							grade 3 events	885	860	2244	842	4030	2453
								1%	1%	1%	1%	3%	2%
							grade 4 events	860	906	2093	890	3851	2263
								1%	1%	1%	1%	3%	2%
							grade 5 events	3567	3710	8981	3846	10589	5175
								4%	4%	6%	4%	9%	4%
							grade 6 events	1727	1714	30777	1972	25274	6063
								2%	2%	23%	2%	22%	5%
							grade 7 events	67955	62470	58411	66599	54974	77318
								83%	82%	45%	82%	48%	72%

## 2.2 Compared Parameters

Parameter	Planned	Actual	Parameter	Planned	Actual
Instrument	ACIS	ACIS	Obspar format version number	7	7
Detector	ACIS-235678	ACIS-235678	Obspar file type	PREDICTED	ACTUAL
Grating	NONE	NONE	Obspar update status	NONE	UPDATED
Data mode	FAINT	FAINT	CCD I0 on	N	N
Observation mode	POINTING	POINTING	CCD I1 on	N	N
[deg] Pointing RA	213.467438	213.4573307373914	CCD I2 on	O1	Y
[deg] Pointing Dec	-2.661498	-2.63612906782638	CCD I3 on	O2	Y
[deg] Pointing Roll	80.803542	80.95966657644949	CCD S0 on	N	N
[mm] SIM focus pos	-0.684267	-0.6828225247311905	CCD S1 on	Y	Y
[mm] SIM defocus	0	0.001444936568705701	CCD S2 on	Y	Y
[mm] SIM translation stage pos	-190.132523	-190.1425803651734	CCD S3 on	Y	Y
[mm] SIM translation stage offset	0	0.01005778216563158	CCD S4 on	Y	Y
[s] Observation start time (MET)	352966668.184000	352965662.32311	CCD S5 on	N	N
Observation start date	2009-03-09T06:16:42	2009-03-09T06:01:02	Number of optional ACIS chips dropped	0	0
[s] Observation end time (MET)	352974661.184000	352974886.81107	On-chip summing requested	N	N
Observation end date	2009-03-09T08:29:55	2009-03-09T08:34:46	Subarray requested	NONE	NONE
Read mode	TIMED	TIMED	Alternating exposures requested	N	N
			[s] Primary exposure time	0.000000	3.2

## 2.3 Aspect



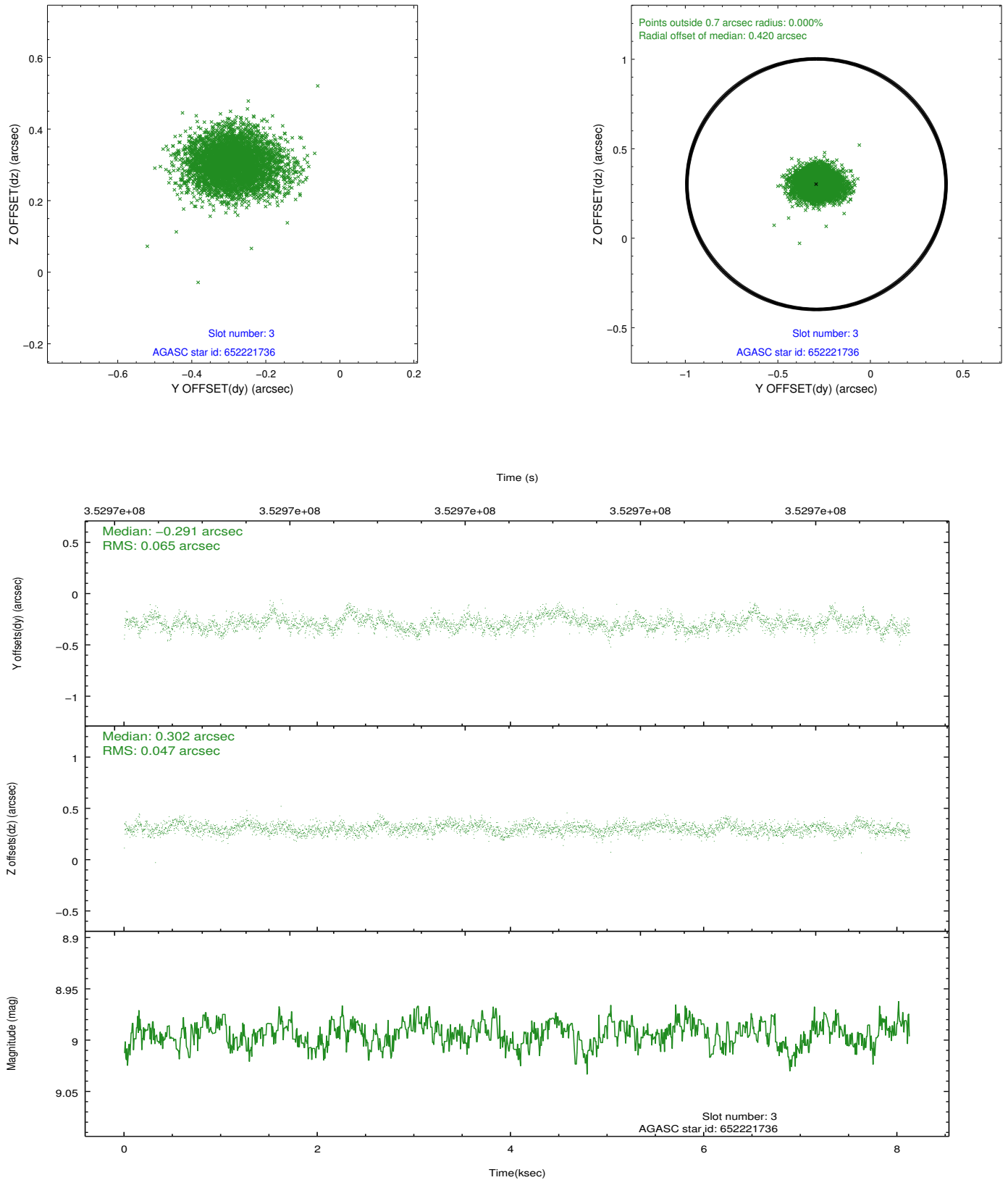


### Slot Statistics

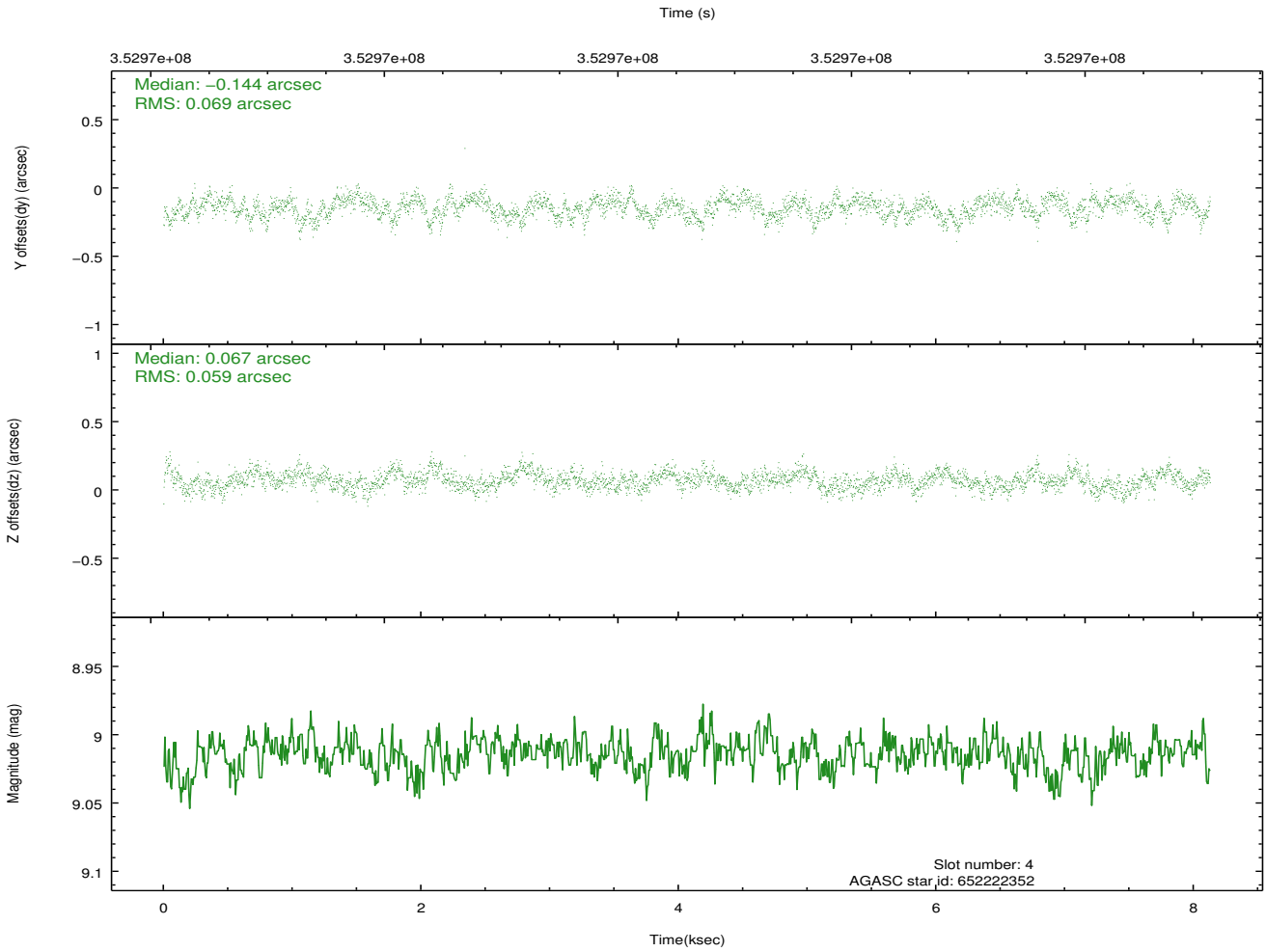
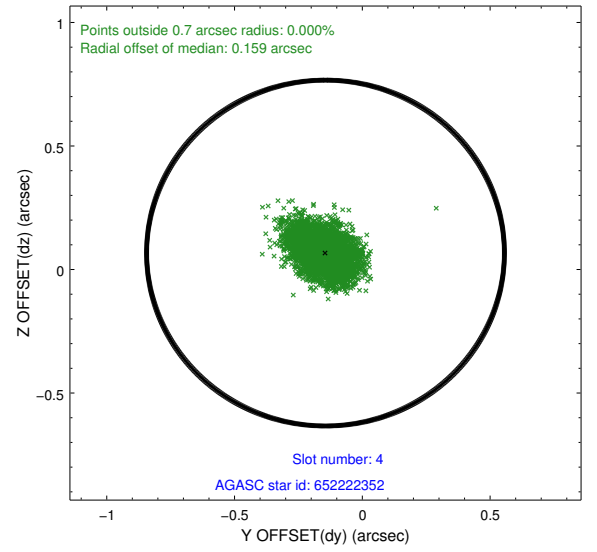
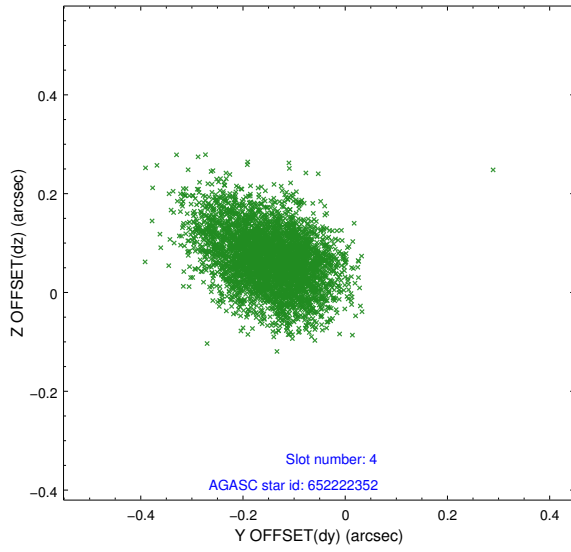
slot	status	id	mag	n_pts	med_dy	med_dz	dr1	dr2	ra	dec	mean_y	mean_z
0	FID	ACIS-S-2	6.90	1983	-0.093	-0.056	0.006	0.012	0.000000	0.000000	-767.44	-1738.01
1	FID	ACIS-S-4	6.98	1983	0.108	0.047	0.006	0.010	0.000000	0.000000	2145.77	169.79
2	FID	ACIS-S-6	7.11	1983	-0.042	0.016	0.007	0.011	0.000000	0.000000	395.54	807.98
3	GUIDE	652221736	8.99	3961	-0.291	0.302	0.084	0.140	213.173074	-1.974533	2271.76	1441.64
4	GUIDE	652222352	9.01	3961	-0.144	0.067	0.095	0.157	214.171753	-2.284816	1743.54	-2283.43
5	GUIDE	652607784	8.54	3963	0.070	0.181	0.078	0.119	213.646988	-3.161185	-1671.40	-925.36
6	GUIDE	652221848	9.36	3959	0.113	-0.207	0.090	0.148	212.909203	-1.954616	2190.29	2389.68
7	GUIDE	652608240	9.59	3959	0.253	-0.344	0.128	0.213	212.720785	-3.106340	-2010.30	2393.58

## 2.4 Star Slots

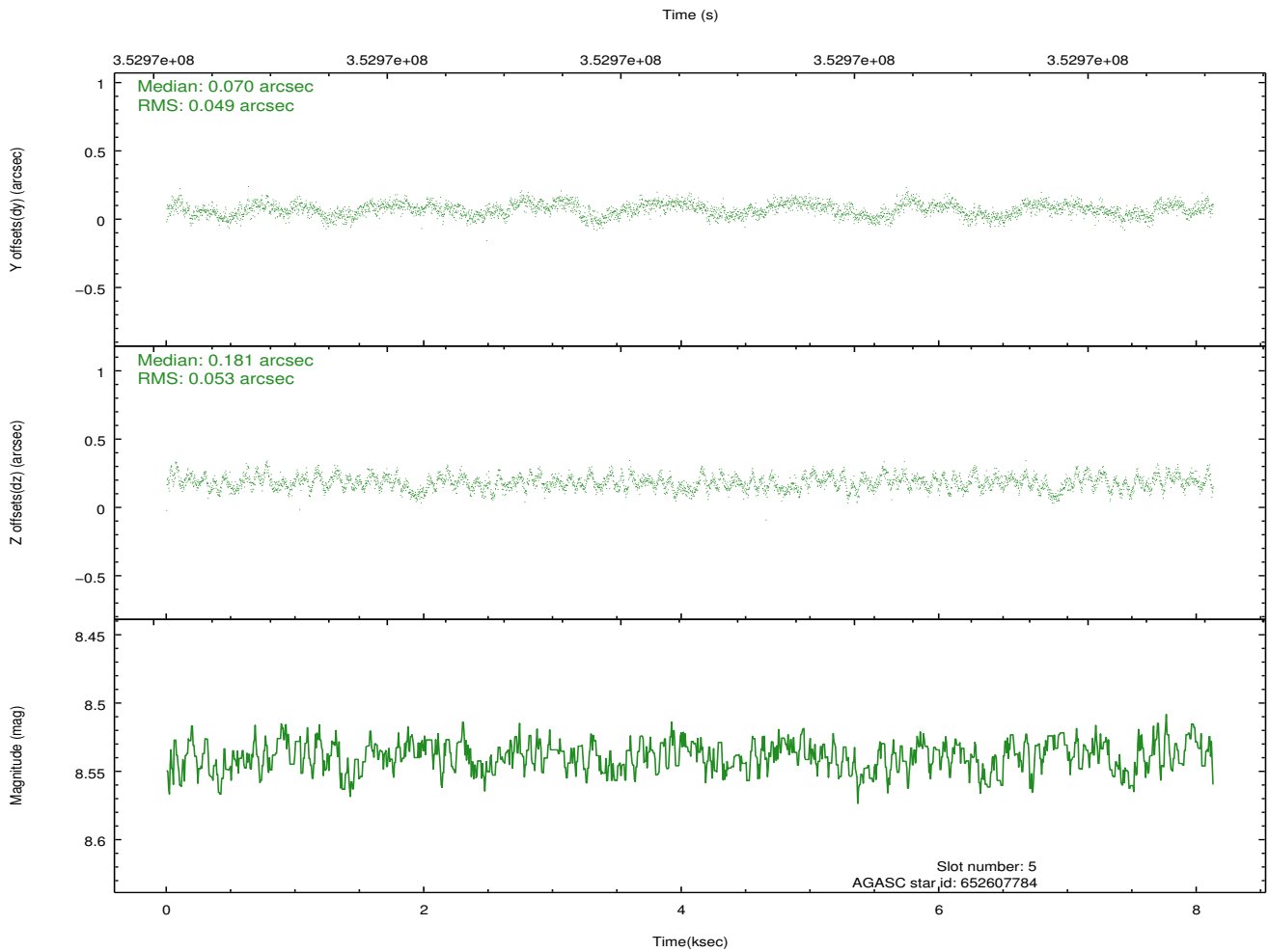
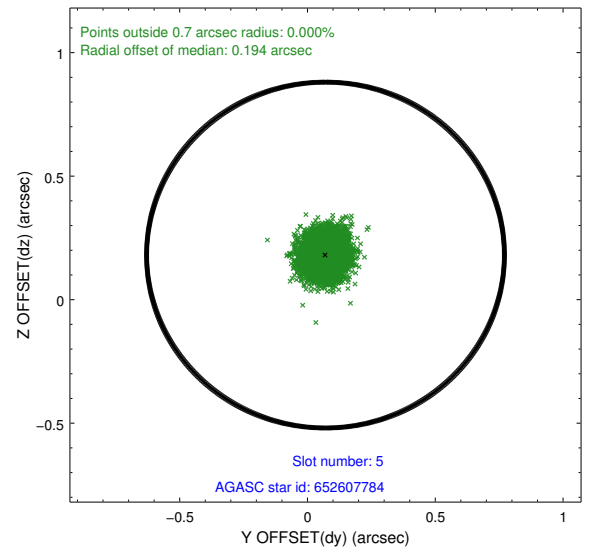
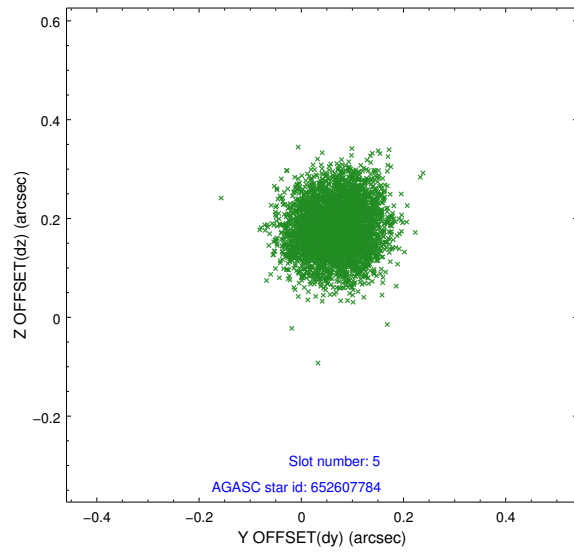
### 2.4.1 Slot 3



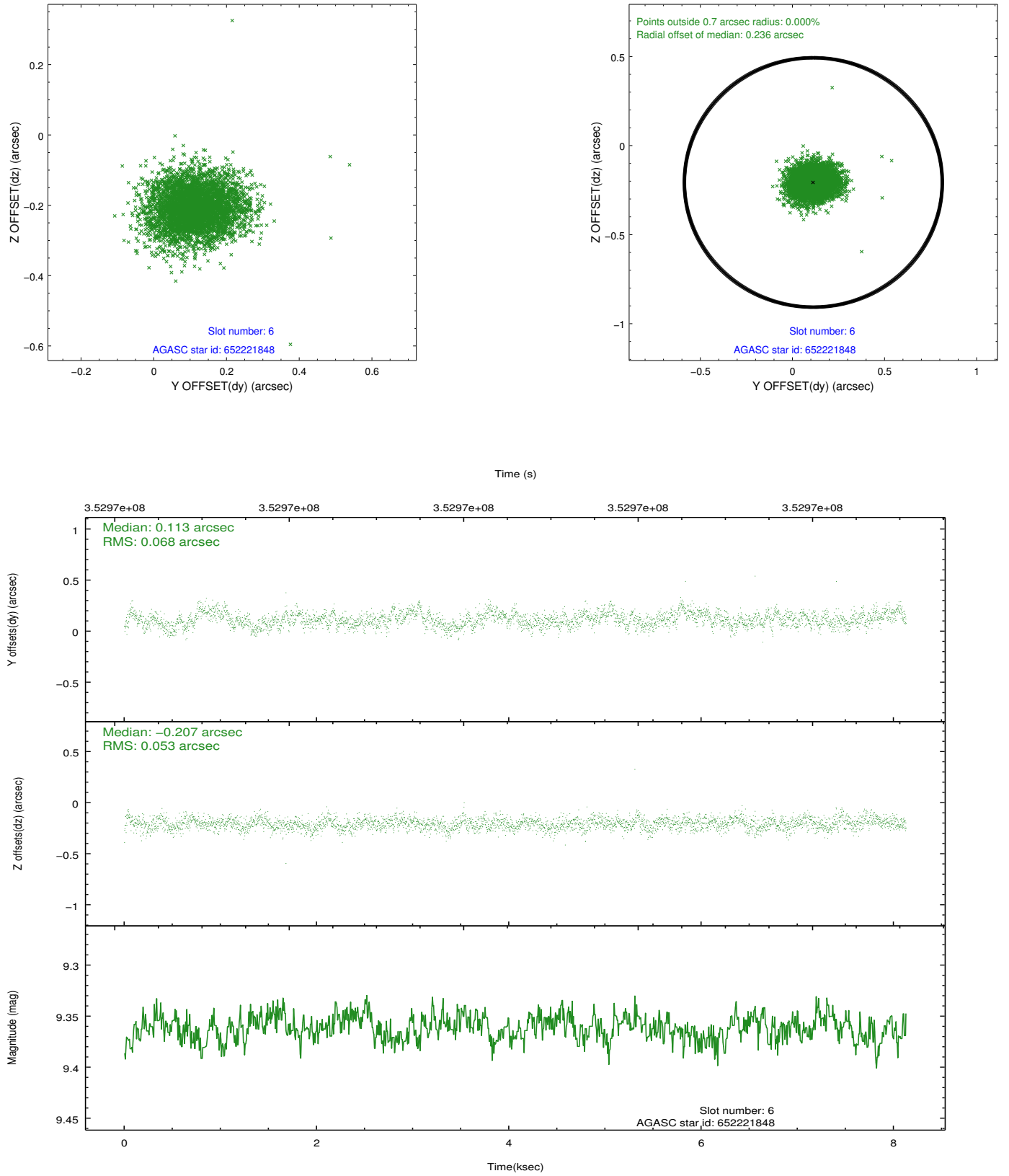
## 2.4.2 Slot 4



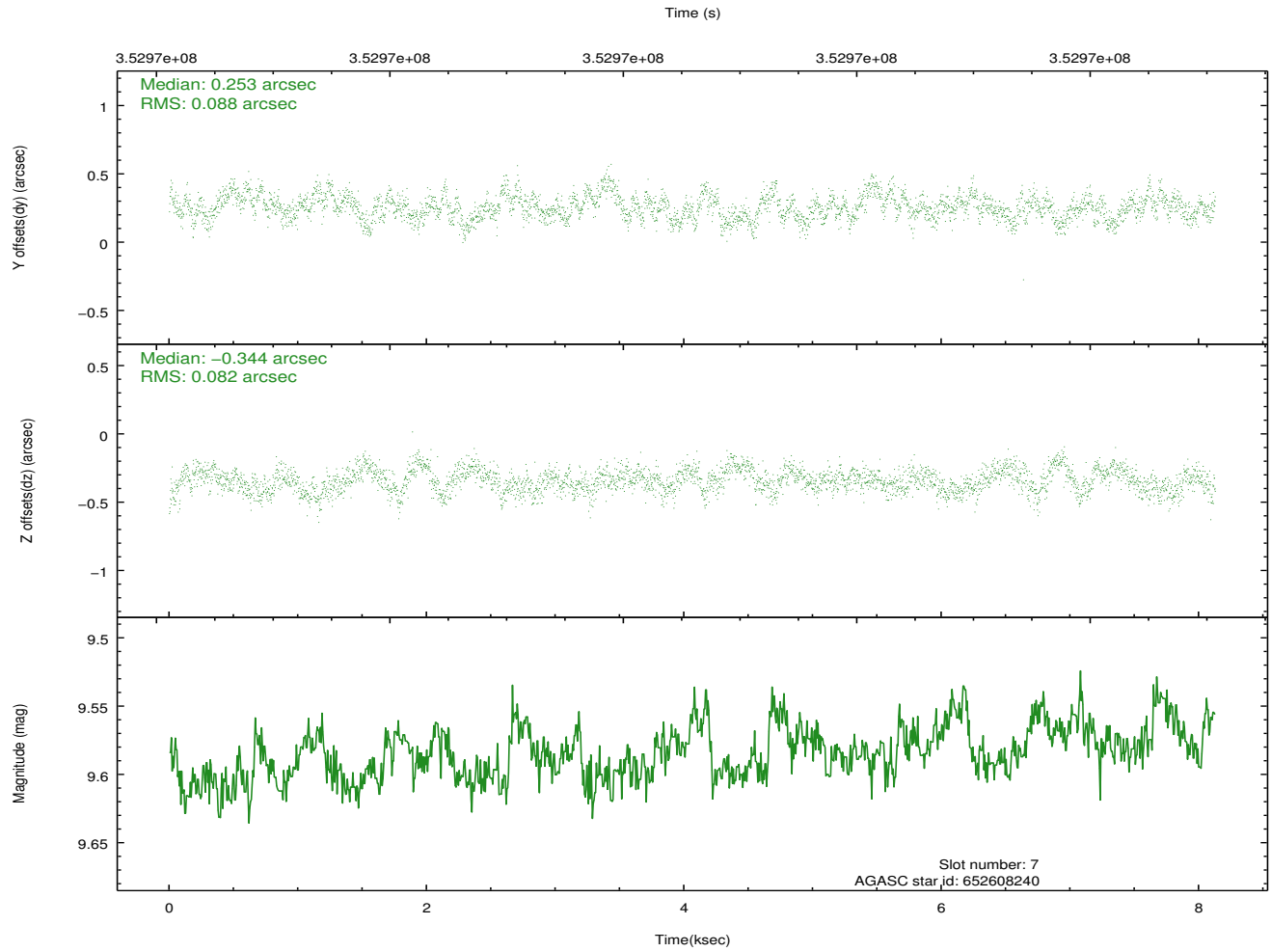
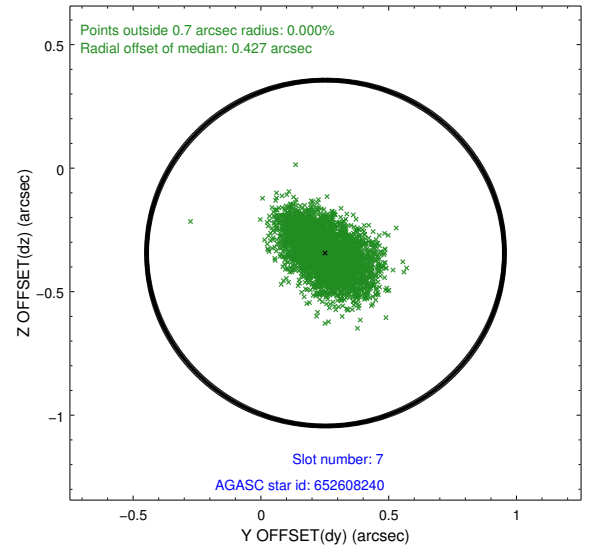
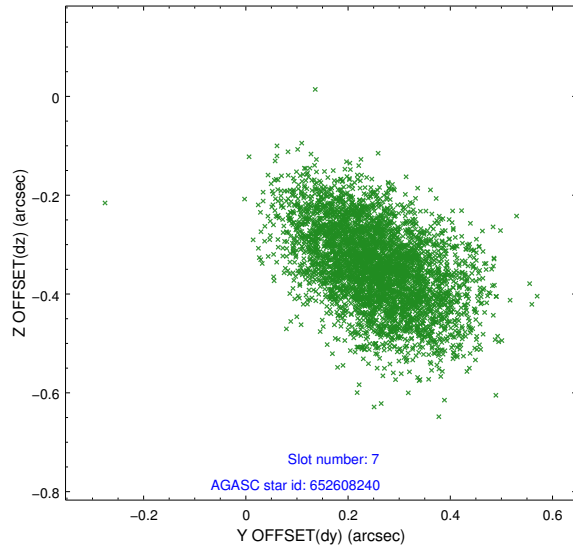
### 2.4.3 Slot 5



## 2.4.4 Slot 6

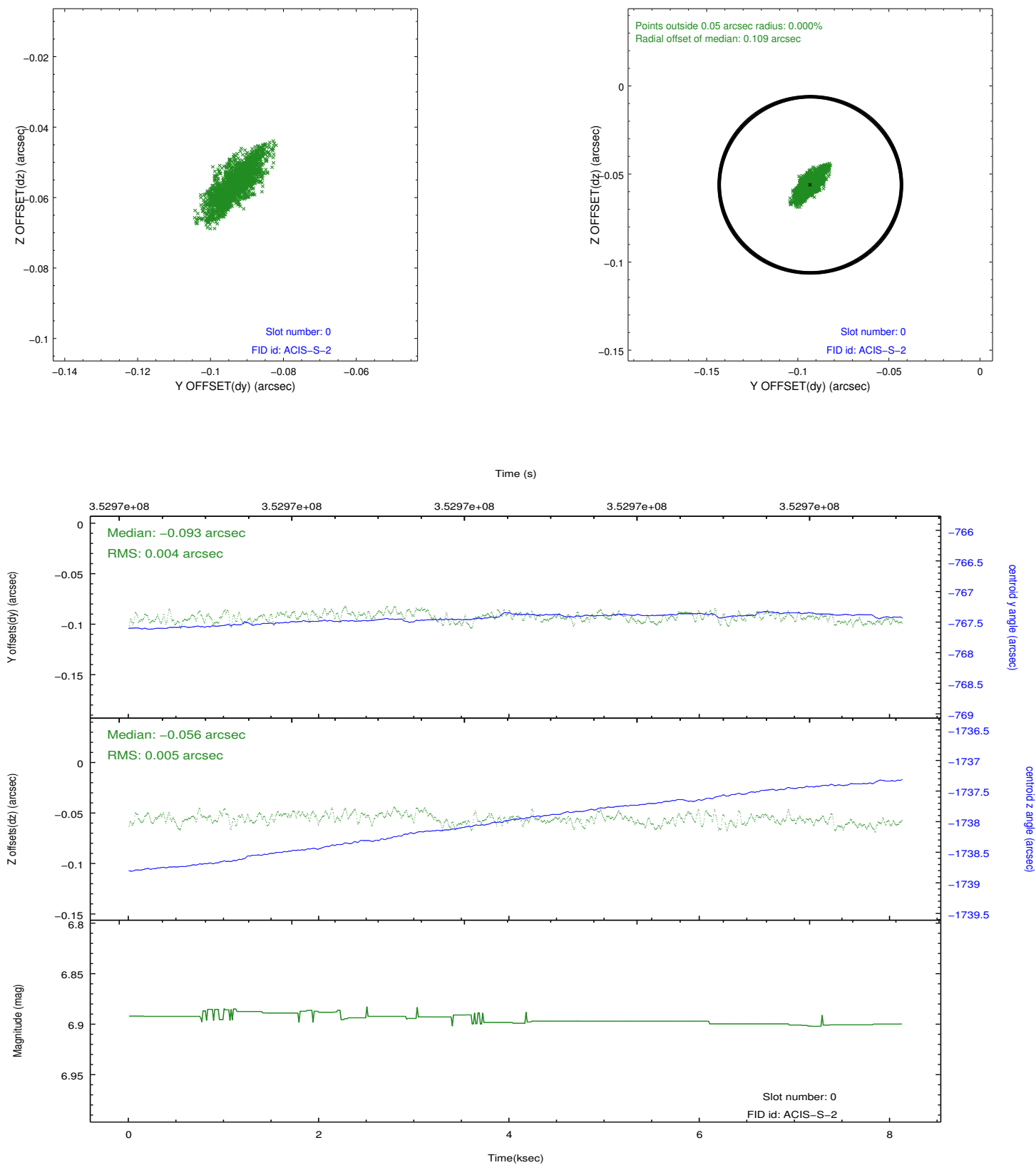


## 2.4.5 Slot 7

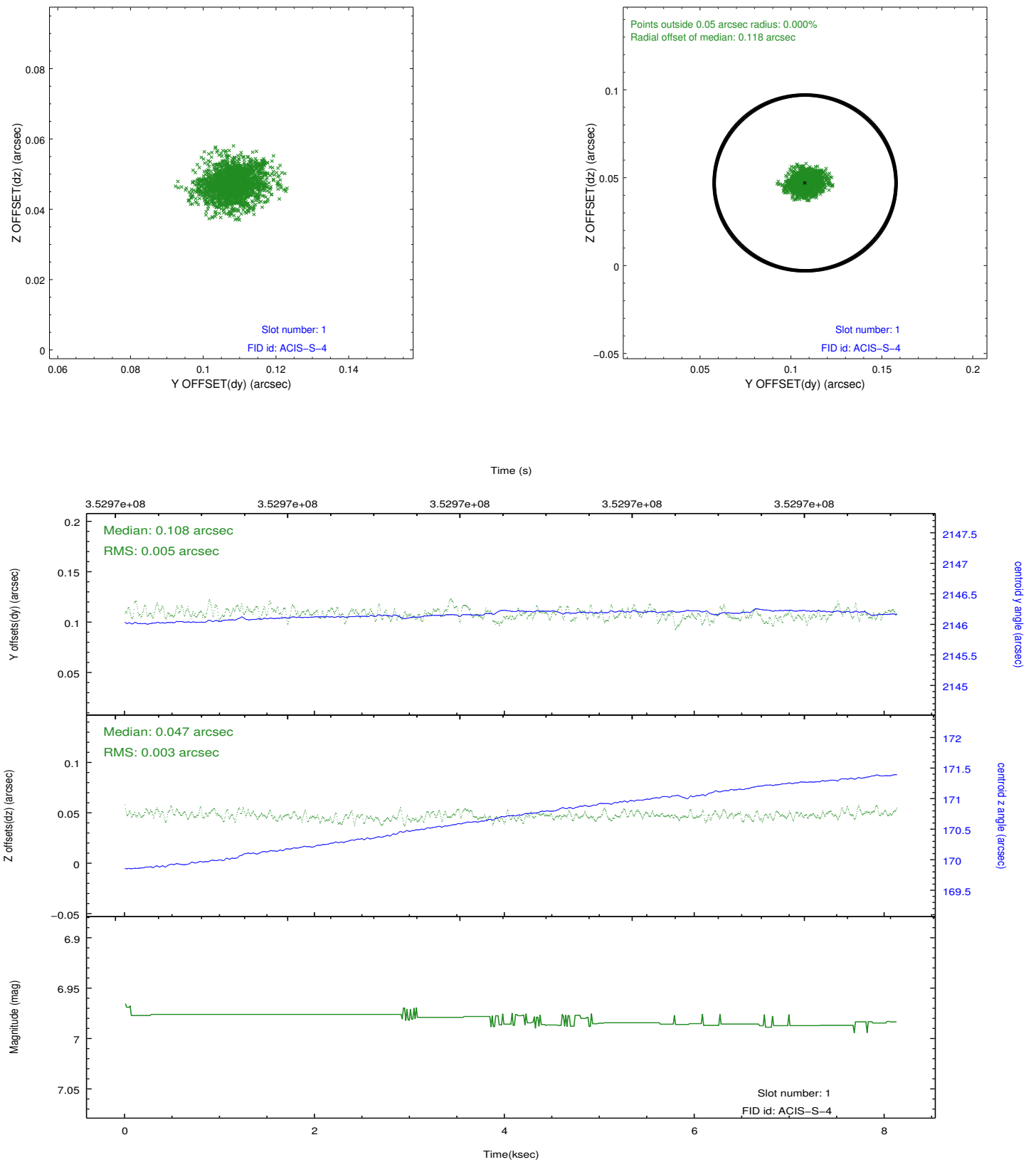


## 2.5 FID Slots

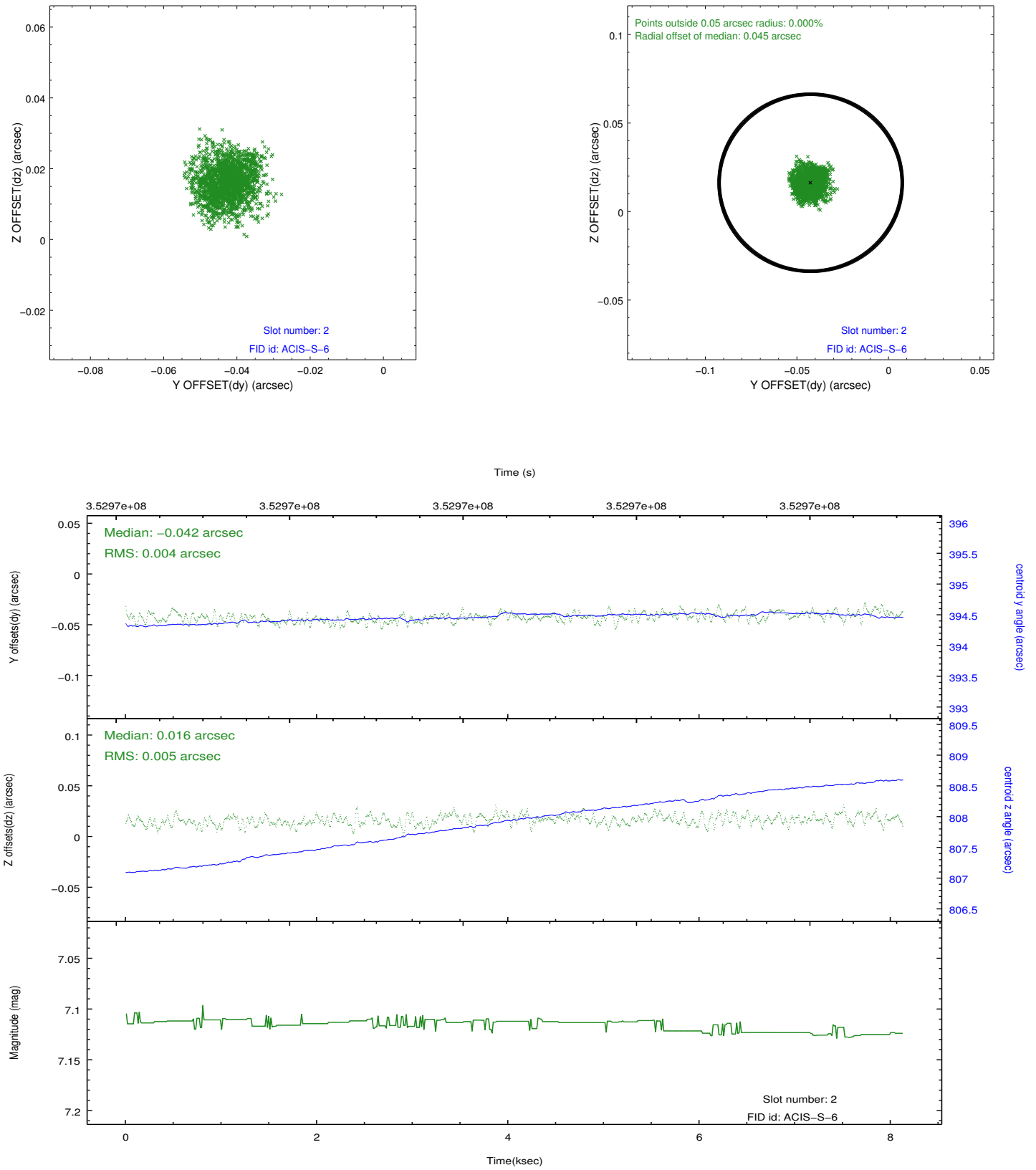
### 2.5.1 Slot 0



## 2.5.2 Slot 1



### 2.5.3 Slot 2



## A Summary

### A.1 Status

V&V Scientist	Joy Nichols
V&V Date (YYYY-MM-DD)	2012.06.07
V&V Edition	1
V&V Disposition and Status	OK
V&V Charge Time	7.74719997

### A.2 Comments