

V&V Reference Report

L2 ASCDS Version : 8.5.1.1

Observation 6283 - L2 Version 3
Chandra X-Ray Center

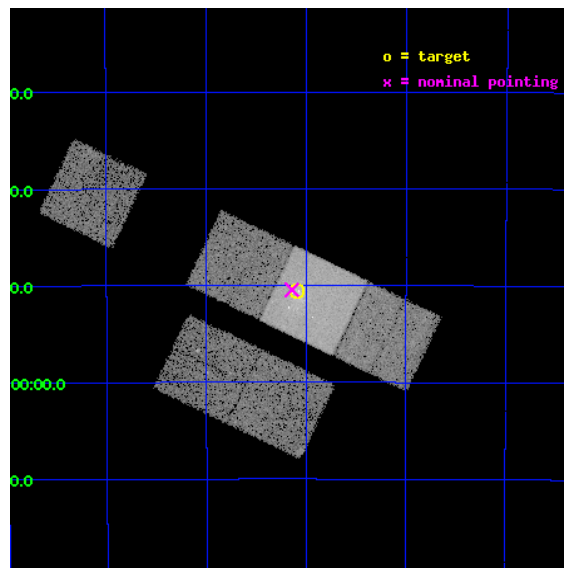
L2 Processing Date : Dec 23 2012

Contents

1	Front	2
2	OBI	3
2.1	OBI	3
2.1.1	Images	3
2.1.2	Bias	3
2.1.3	Parameters	4
2.1.4	Events	4
2.2	Compared Parameters	5
2.3	Aspect	6
2.4	Star Slots	9
2.4.1	Slot 3	9
2.4.2	Slot 4	10
2.4.3	Slot 5	11
2.4.4	Slot 6	12
2.4.5	Slot 7	13
2.5	FID Slots	14
2.5.1	Slot 0	14
2.5.2	Slot 1	15
2.5.3	Slot 2	16
A	Summary	17
A.1	Status	17
A.2	Comments	17

1 Front

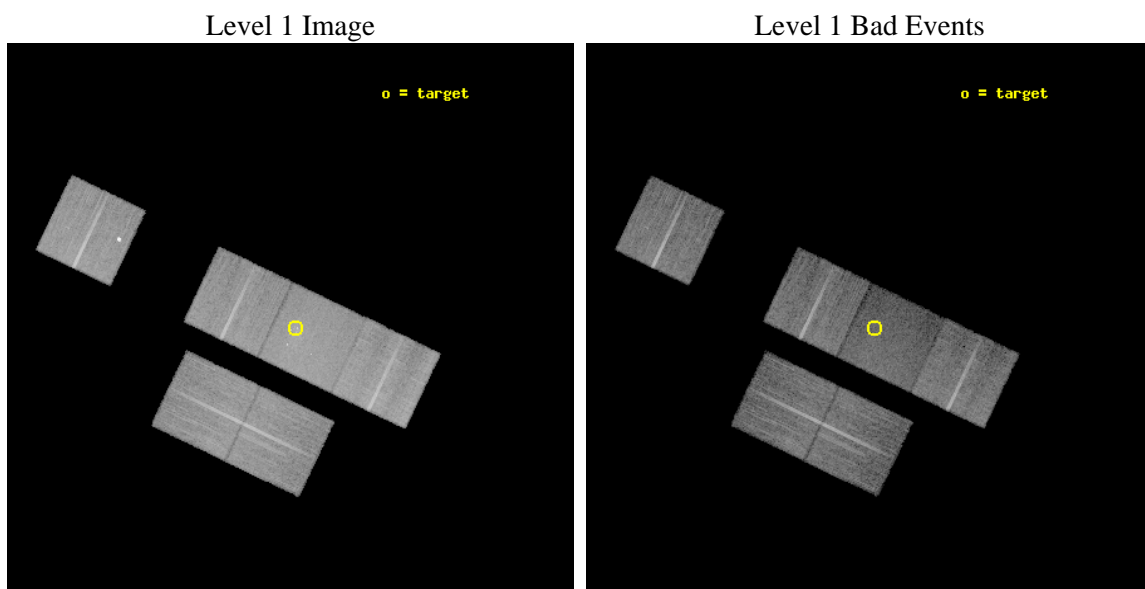
seq_num	200344	Sequence number
obs_id	6283	Observation id
title	A Rich Population of Massive Young Stars in the Cluster Westerlund 1	
observer	Dr. Stephen Skinner	Principal investigator
object	Westerlund1	Source name
dtcycle	0	
cycle	P	events from which exps? Prim/Second/Both
ra_targ	251.7725	Observer's specified target RA [deg]
dec_targ	-45.843528	Observer's specified target Dec [deg]
ra_nom	251.78585369811	Nominal RA [deg]
dec_nom	-45.840934654	Nominal Dec [deg]
roll_nom	25.564624746185	Nominal Roll [deg]
revision	3	Processing version of data
ontime	19048.863116205	Sum of GTIs [s]
livetime	18807.654941579	Livetime [s]
ontime2	19048.698956221	Sum of GTIs [s]
ontime3	19048.781036198	Sum of GTIs [s]
ontime4	19045.663156033	Sum of GTIs [s]
ontime6	19048.822076201	Sum of GTIs [s]
ontime7	19048.863116205	Sum of GTIs [s]
ontime8	19048.739996195	Sum of GTIs [s]
l2events	127629	Number of level 2 events



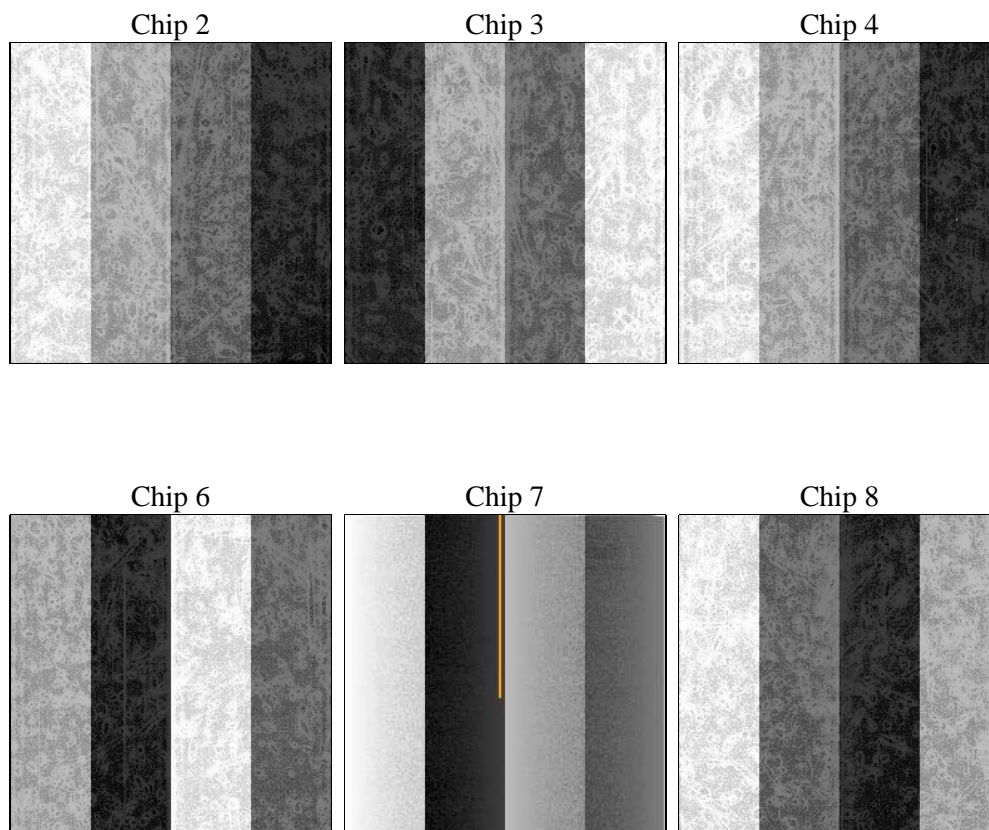
2 OBI

2.1 OBI

2.1.1 Images



2.1.2 Bias



2.1.3 Parameters

obi_num	0	Obi number	sched_exp_time	19000.000000	[s] Scheduled observation exposure time
ascdsver	8.5.1.1	Processing system revision	ontime	19048.863116205	Sum of GTIs [s]
caldsver	4.5.5	 	ontime2	19048.698956221	Sum of GTIs [s]
date	2012-12-23T18:10:01	Date and time of file creation	ontime3	19048.781036198	Sum of GTIs [s]
revision	3	Processing version of data	ontime4	19045.663156033	Sum of GTIs [s]
			ontime6	19048.822076201	Sum of GTIs [s]
			ontime7	19048.863116205	Sum of GTIs [s]
			ontime8	19048.739996195	Sum of GTIs [s]
			l1events	769342	Number of level 1 events

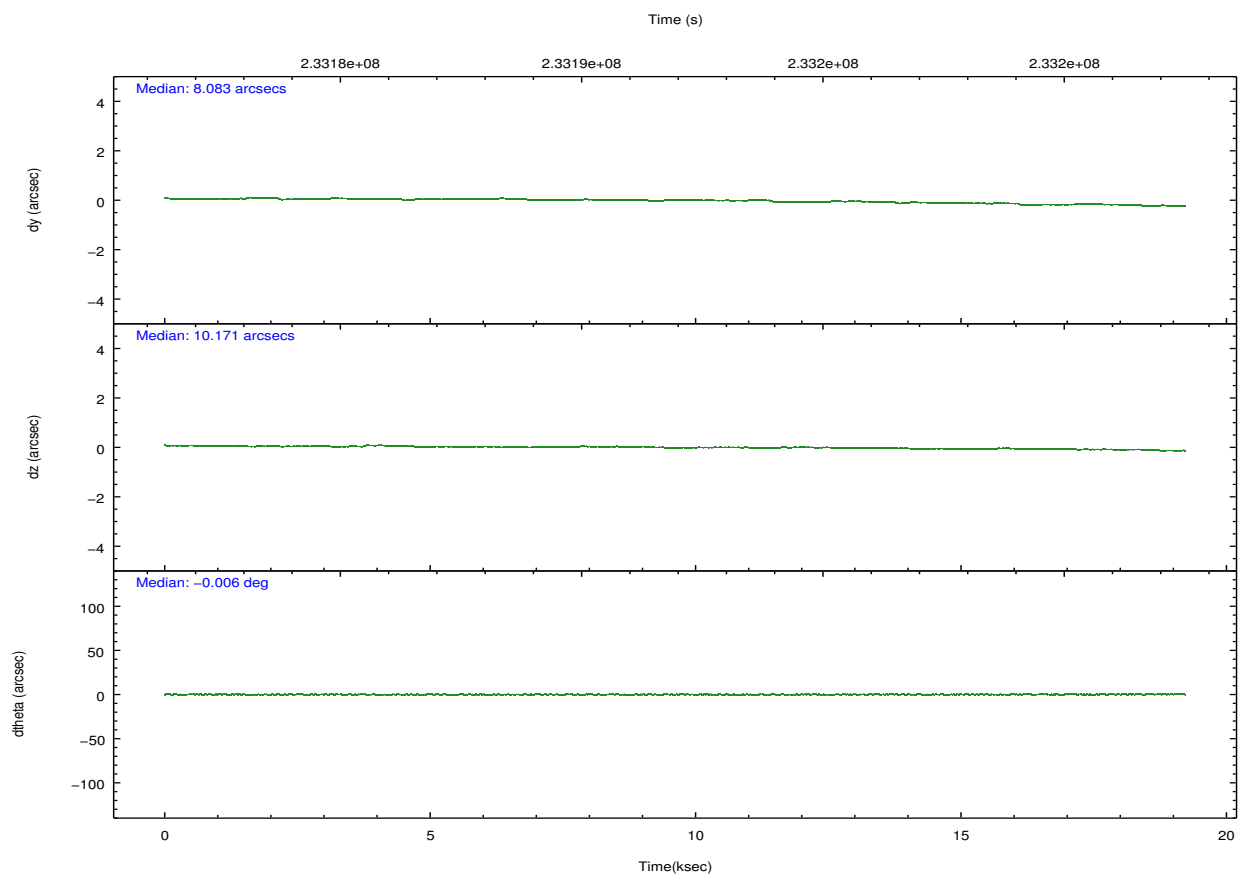
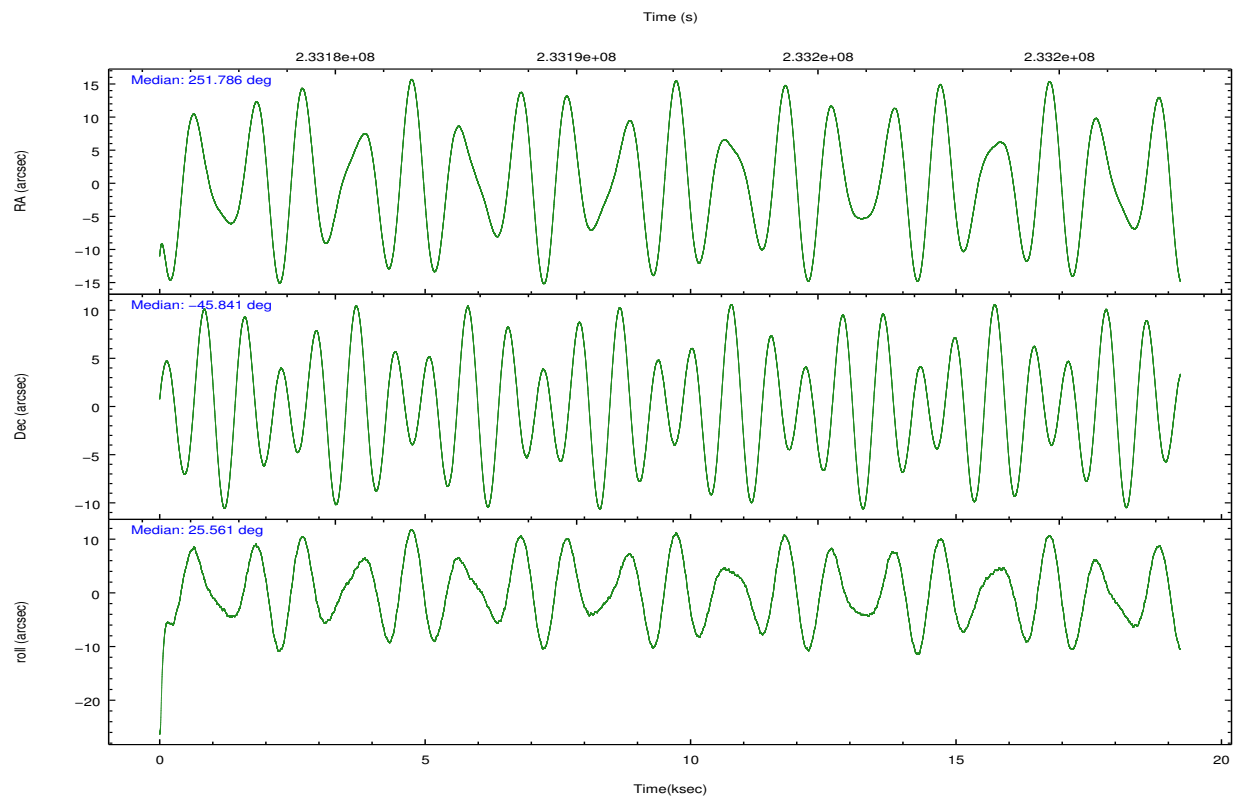
2.1.4 Events

	ccd 2	ccd 3	ccd 4	ccd 6	ccd 7	ccd 8		ccd 2	ccd 3	ccd 4	ccd 6	ccd 7	ccd 8
level 1 events	114792	112004	138298	118505	138034	147709	grade 0 events	5181	4857	10638	6495	7617	13491
rejected events	102521	99854	119957	103509	69322	109736		4%	4%	7%	5%	5%	9%
rejected %	89%	89%	86%	87%	50%	74%	grade 1 events	70	56	150	70	118	121
								0%	0%	0%	0%	0%	0%
							grade 2 events	2626	2509	2944	2987	14582	7936
								2%	2%	2%	2%	10%	5%
							grade 3 events	1229	1310	1402	1433	6749	3767
								1%	1%	1%	1%	4%	2%
							grade 4 events	1200	1278	1322	1407	6653	3561
								1%	1%	0%	1%	4%	2%
							grade 5 events	3644	4544	4303	4737	13621	6590
								3%	4%	3%	3%	9%	4%
							grade 6 events	2040	2198	2043	2681	33127	9221
								1%	1%	1%	2%	23%	6%
							grade 7 events	98802	95252	115496	98695	55567	103022
								86%	85%	83%	83%	40%	69%

2.2 Compared Parameters

Parameter	Planned	Actual	Parameter	Planned	Actual
Instrument	ACIS	ACIS	Obspar format version number	7	7
Detector	ACIS-234678	ACIS-234678	Obspar file type	PREDICTED	ACTUAL
Grating	NONE	NONE	Obspar update status	NONE	UPDATED
Data mode	FAINT	FAINT	Number of optional ACIS chips dropped	0	0
Observation mode	POINTING	POINTING	On-chip summing requested	N	N
[deg] Pointing RA	251.764201	251.7858536981092	Subarray requested	NONE	NONE
[deg] Pointing Dec	-45.863616	-45.84093465399955	Alternating exposures requested	N	N
[deg] Pointing Roll	25.392476	25.56462474618548	[s] Primary exposure time	0.000000	3.2
[mm] SIM focus pos	-0.684267	-0.6828225247311905			
[mm] SIM defocus	0	0.001444936568705701			
[mm] SIM translation stage pos	-190.132523	-190.1400660498719			
[mm] SIM translation stage offset	0	0.00754346686406393			
[s] Observation start time (MET)	233182548.184000	233181519.51762			
Observation start date	2005-05-22T20:54:44	2005-05-22T20:38:39			
[s] Observation end time (MET)	233201548.184000	233202399.28108			
Observation end date	2005-05-23T02:11:24	2005-05-23T02:26:39			
Read mode	TIMED	TIMED			

2.3 Aspect

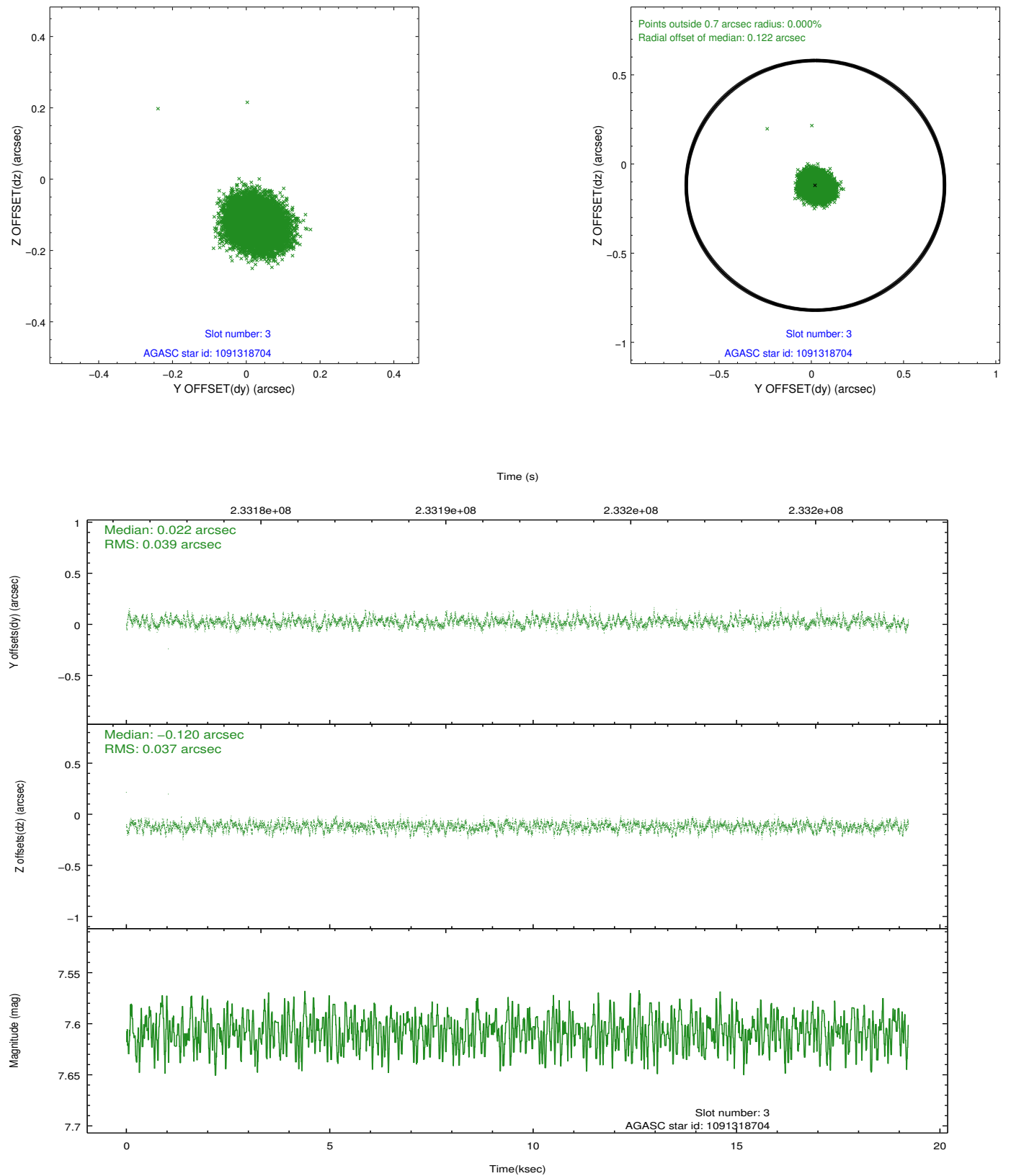


Slot Statistics

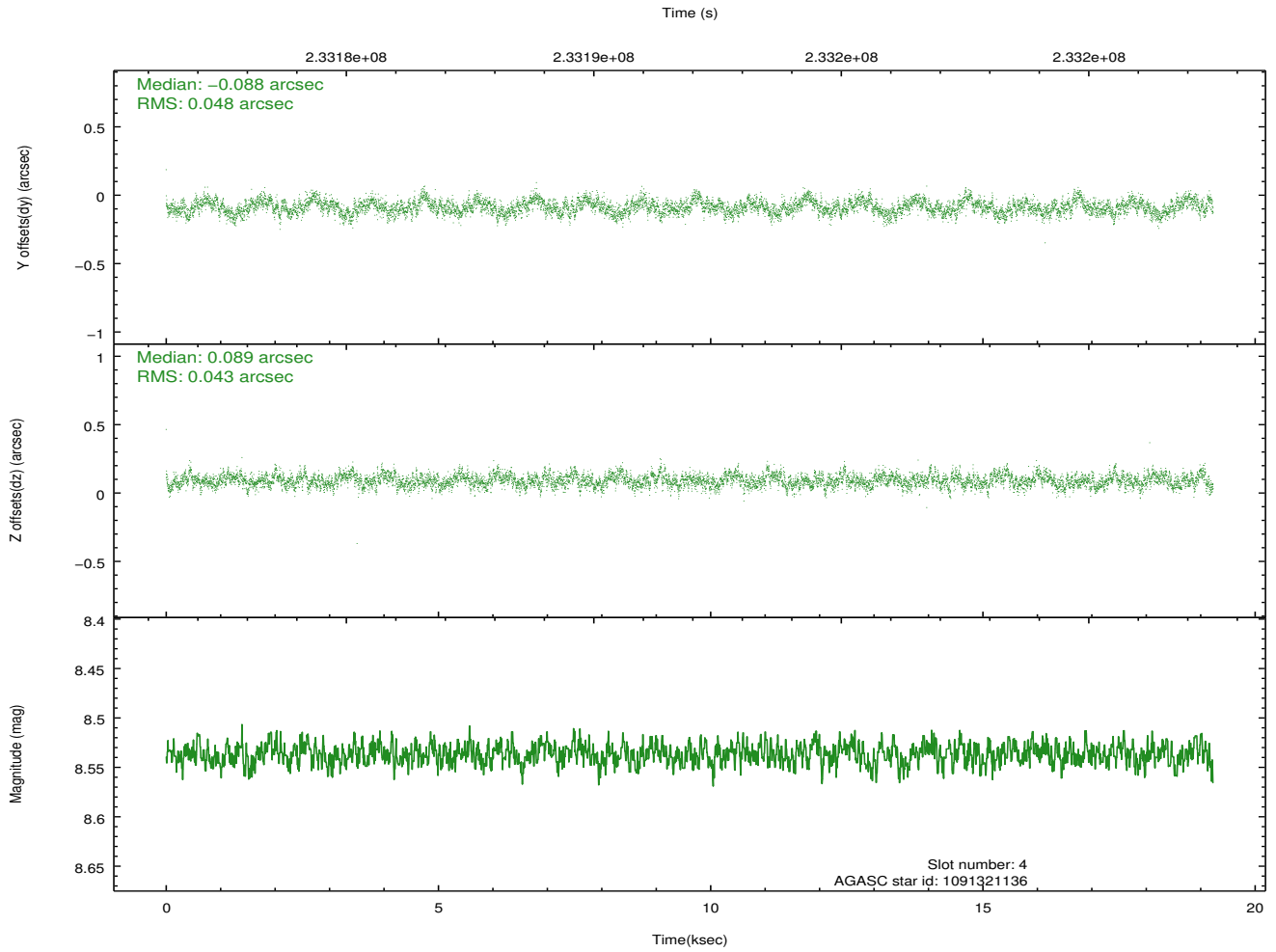
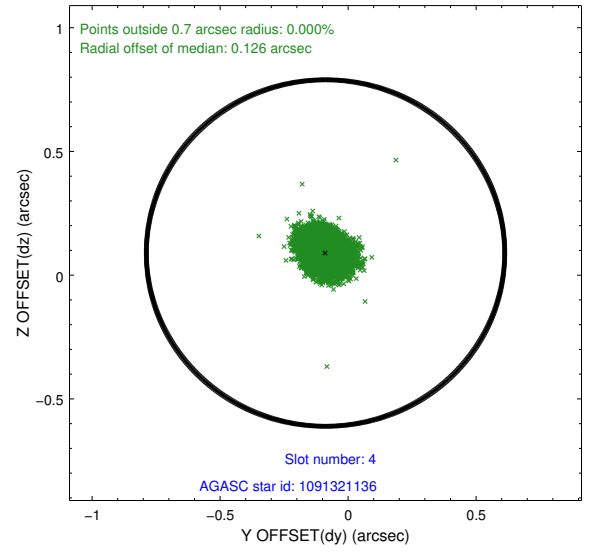
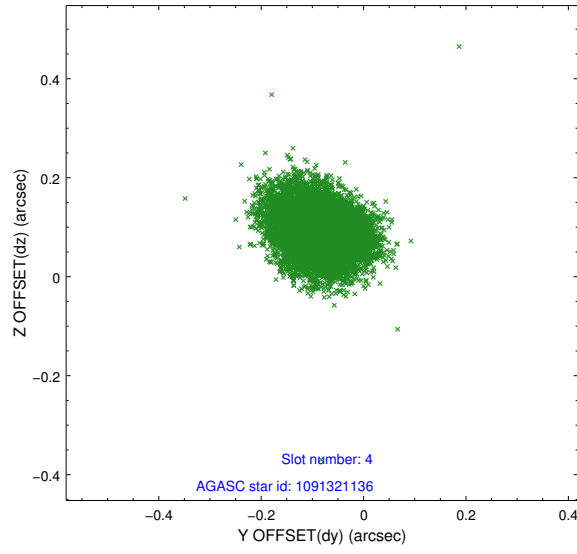
slot	status	id	mag	n_pts	med_dy	med_dz	dr1	dr2	ra	dec	mean_y	mean_z
0	FID	ACIS-S-2	7.10	4690	-0.043	-0.026	0.006	0.011	0.000000	0.000000	-760.82	-1731.46
1	FID	ACIS-S-4	7.21	4690	0.122	0.028	0.007	0.012	0.000000	0.000000	2152.48	176.94
2	FID	ACIS-S-5	7.23	4690	-0.110	0.007	0.008	0.015	0.000000	0.000000	-1813.53	170.72
3	GUIDE	1091318704	7.61	9381	0.022	-0.120	0.058	0.092	251.955714	-45.390313	1168.16	1331.14
4	GUIDE	1091321136	8.54	9376	-0.088	0.089	0.068	0.110	252.629031	-45.865288	1951.35	-945.28
5	GUIDE	1091321752	6.94	9381	0.058	0.012	0.046	0.075	251.516776	-46.486101	-1514.71	-1762.48
6	GUIDE	1091341680	8.43	9380	-0.009	-0.013	0.066	0.102	251.240217	-46.114317	-1569.95	-258.72
7	GUIDE	1091343368	6.91	9380	0.016	0.032	0.055	0.082	251.526552	-46.531998	-1563.70	-1922.35

2.4 Star Slots

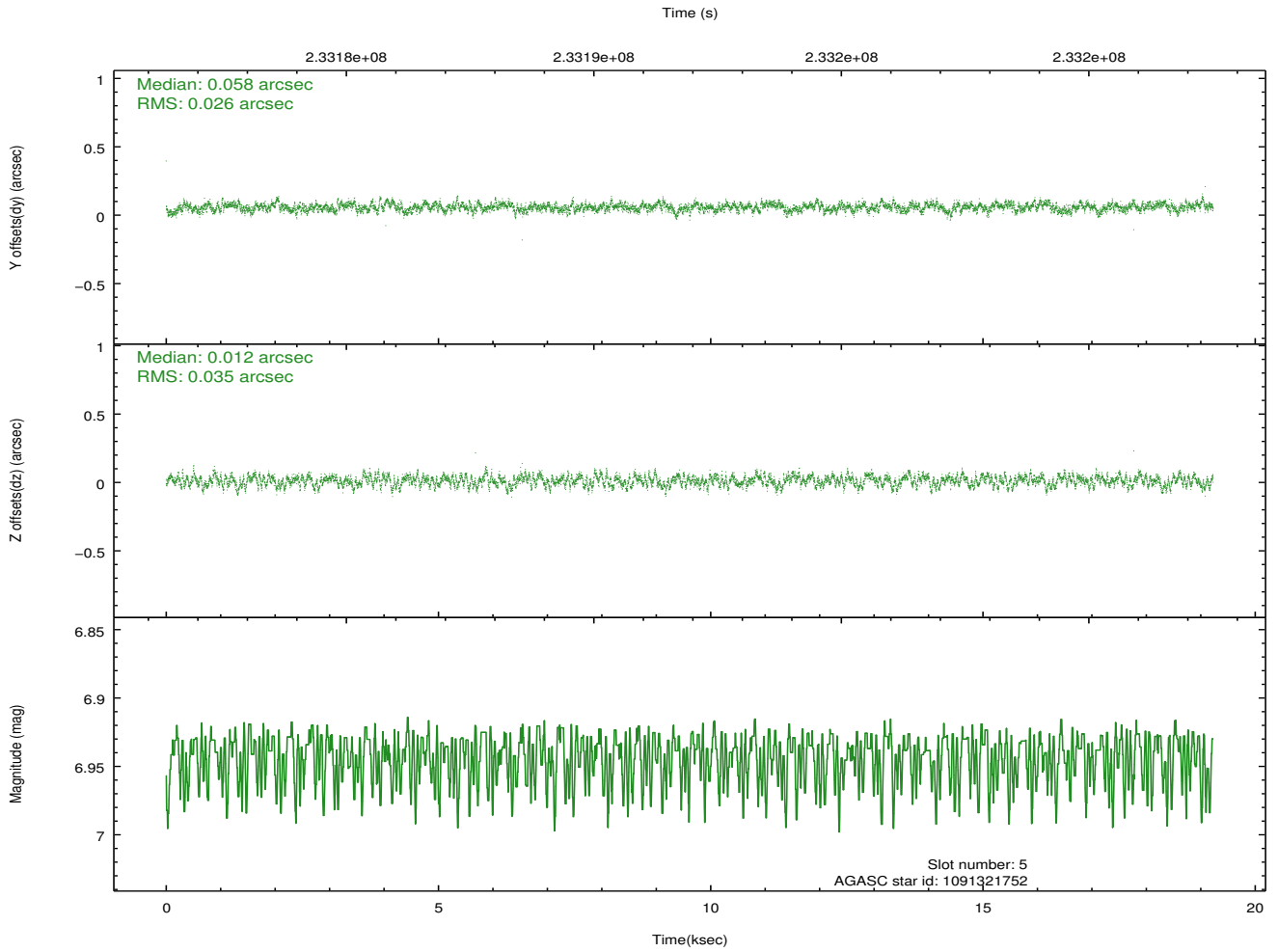
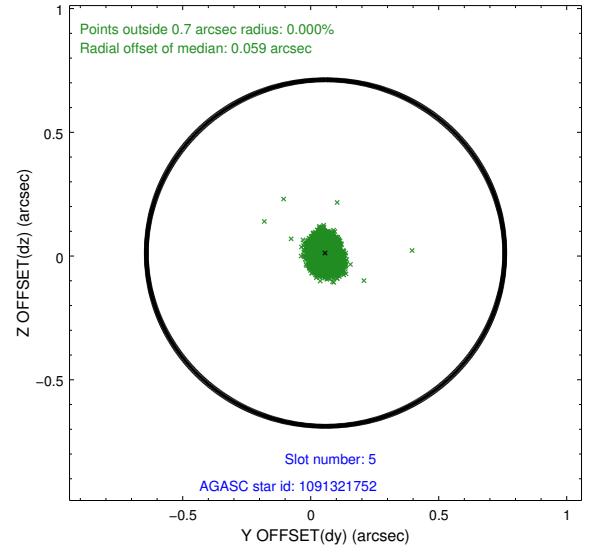
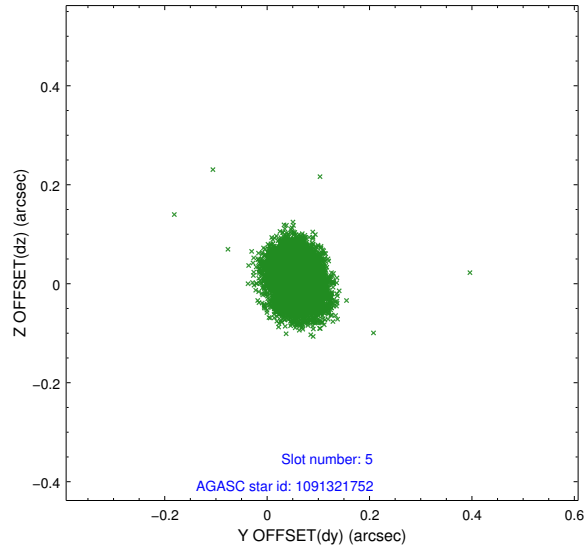
2.4.1 Slot 3



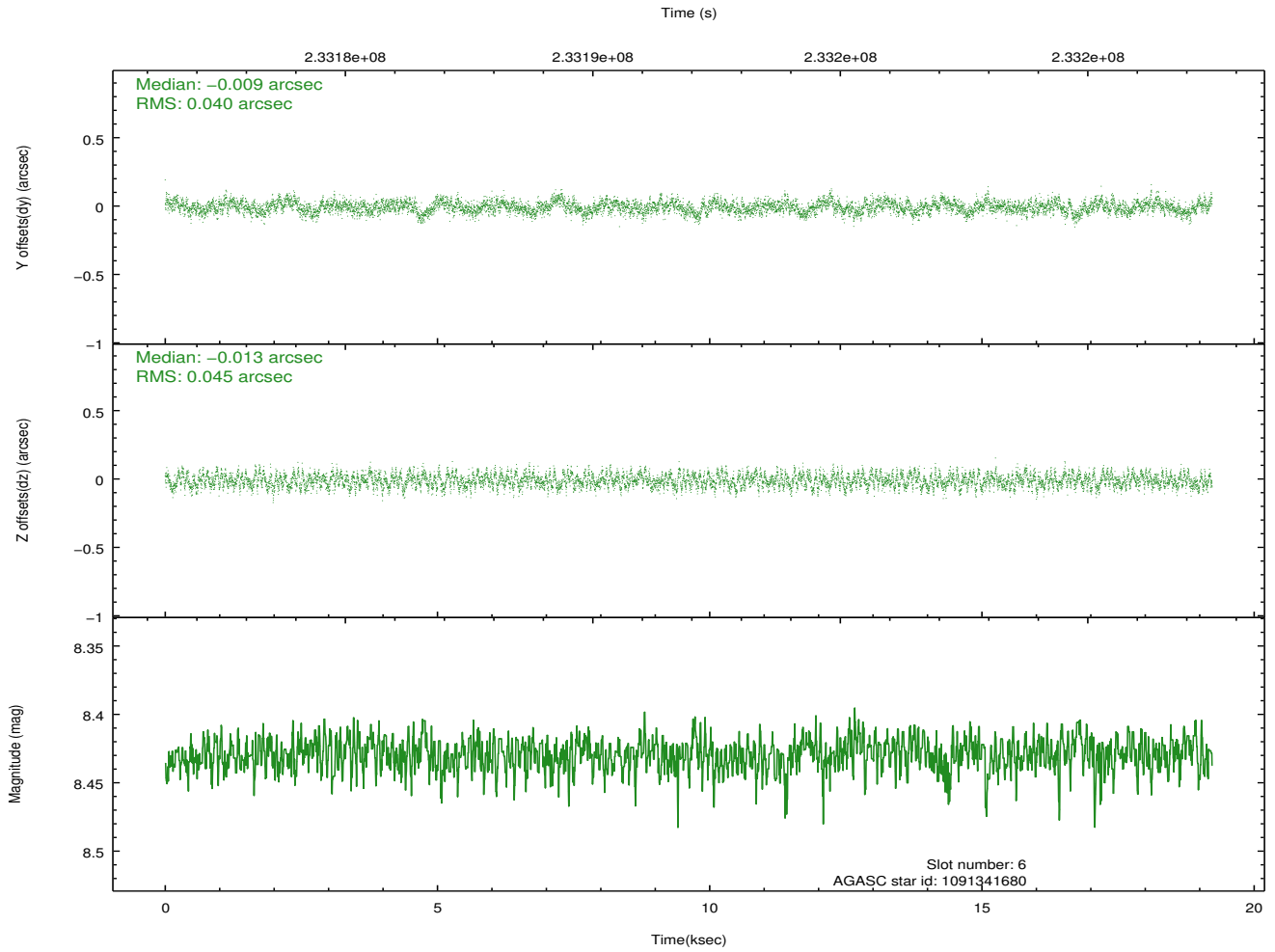
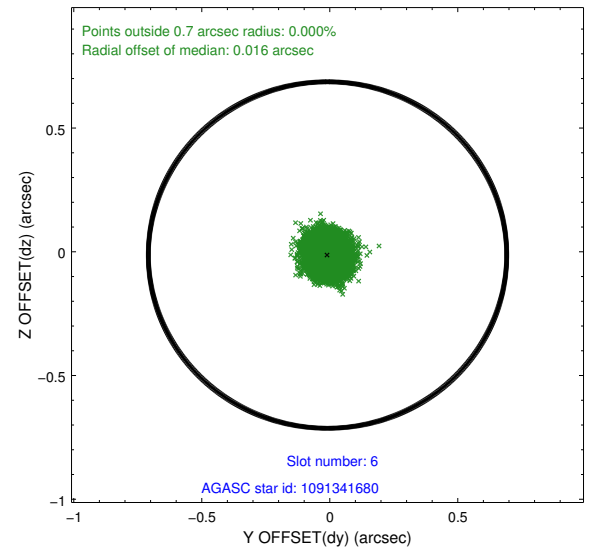
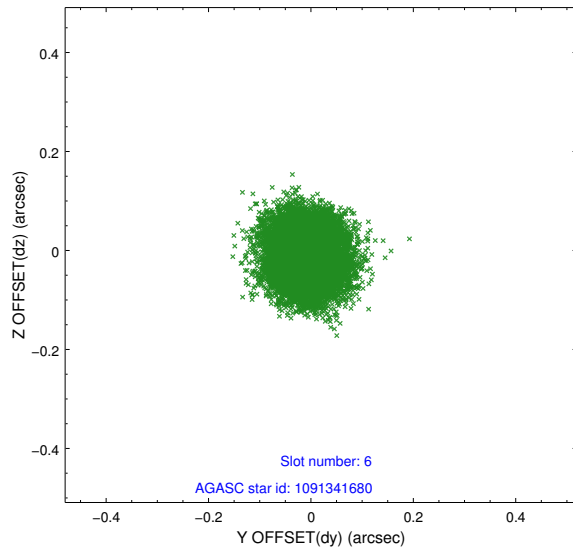
2.4.2 Slot 4



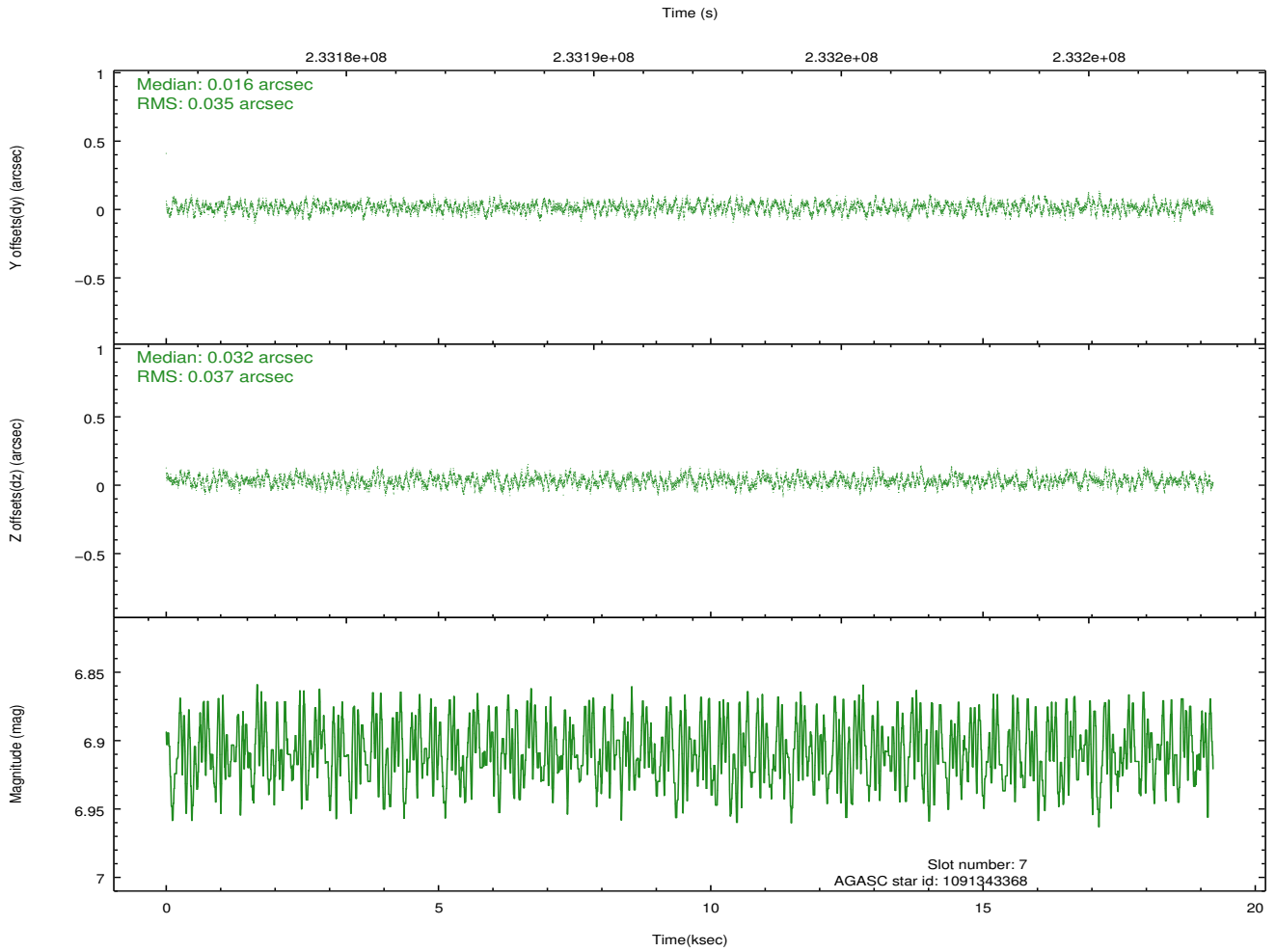
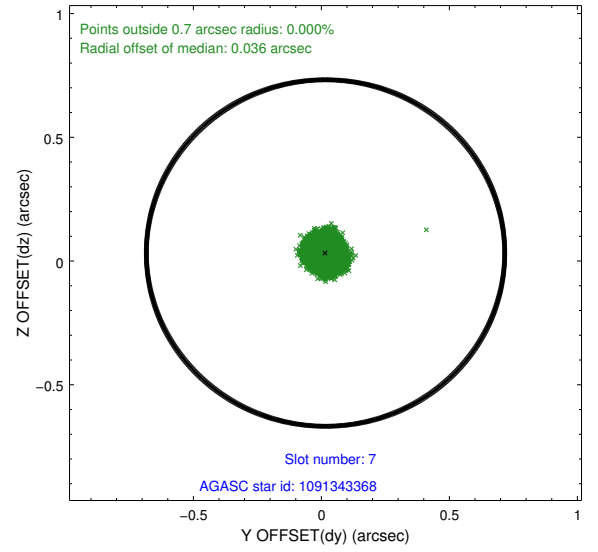
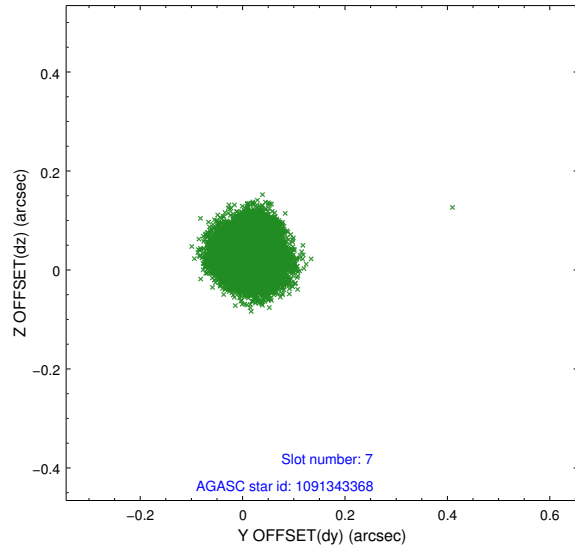
2.4.3 Slot 5



2.4.4 Slot 6

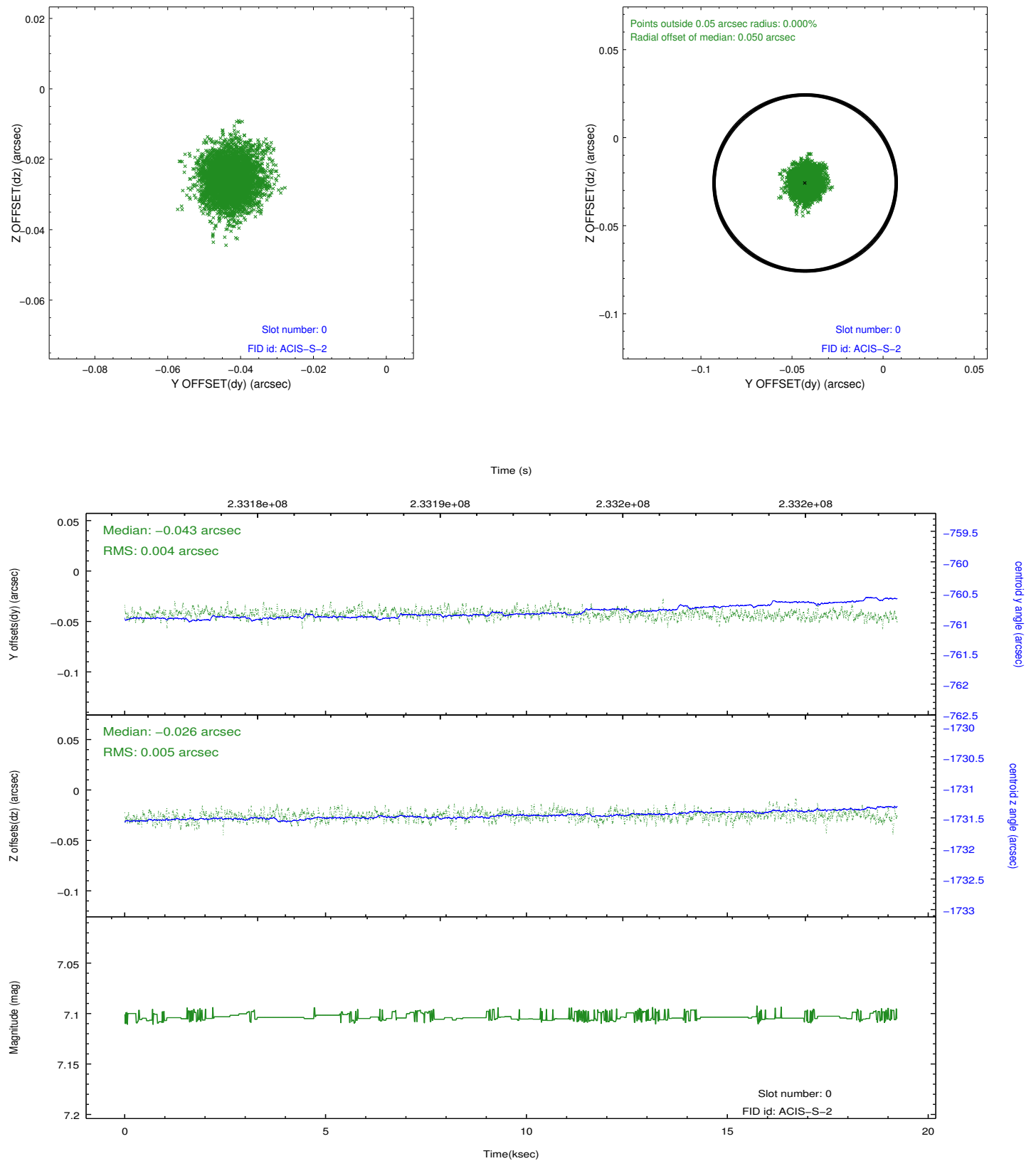


2.4.5 Slot 7

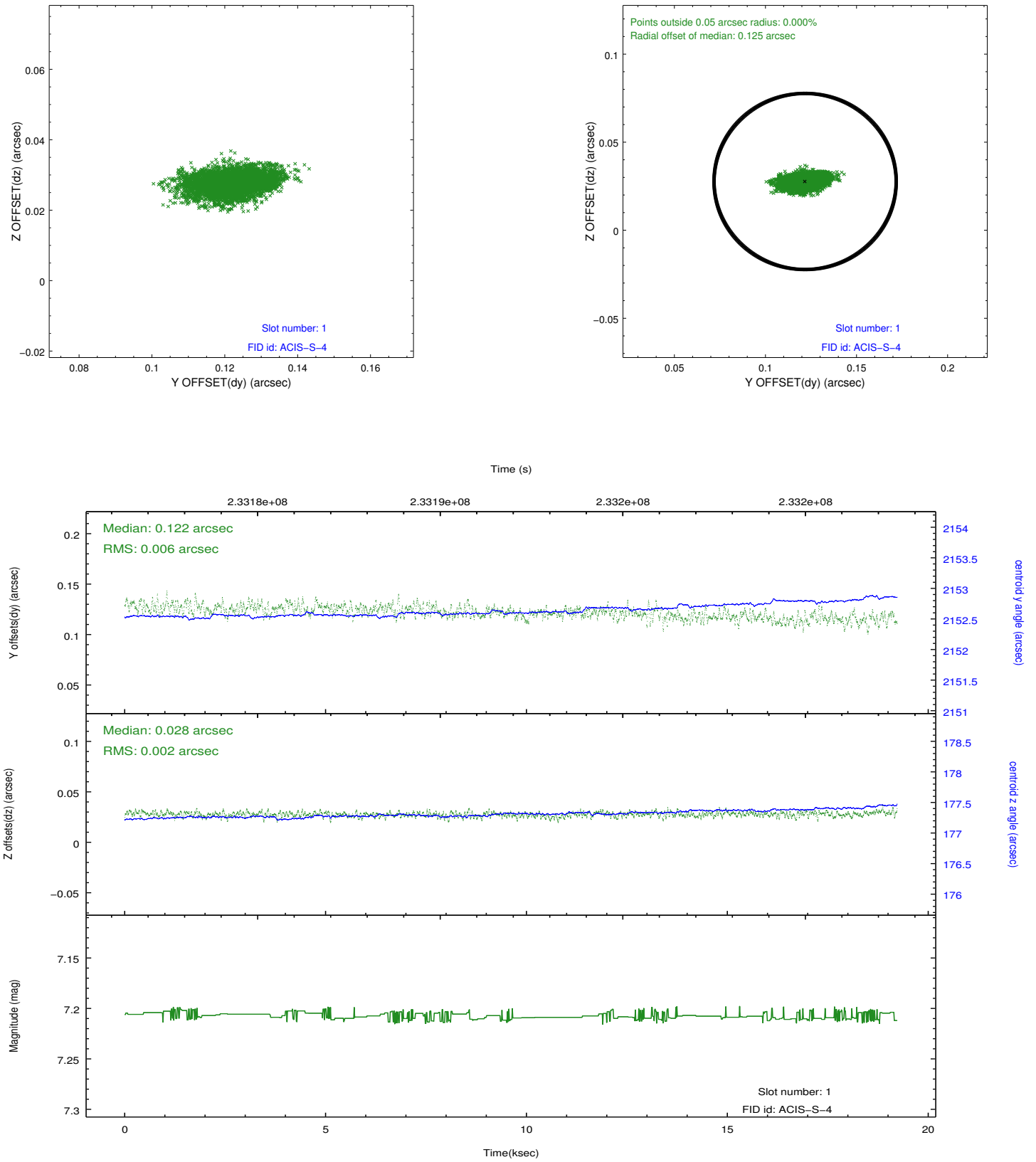


2.5 FID Slots

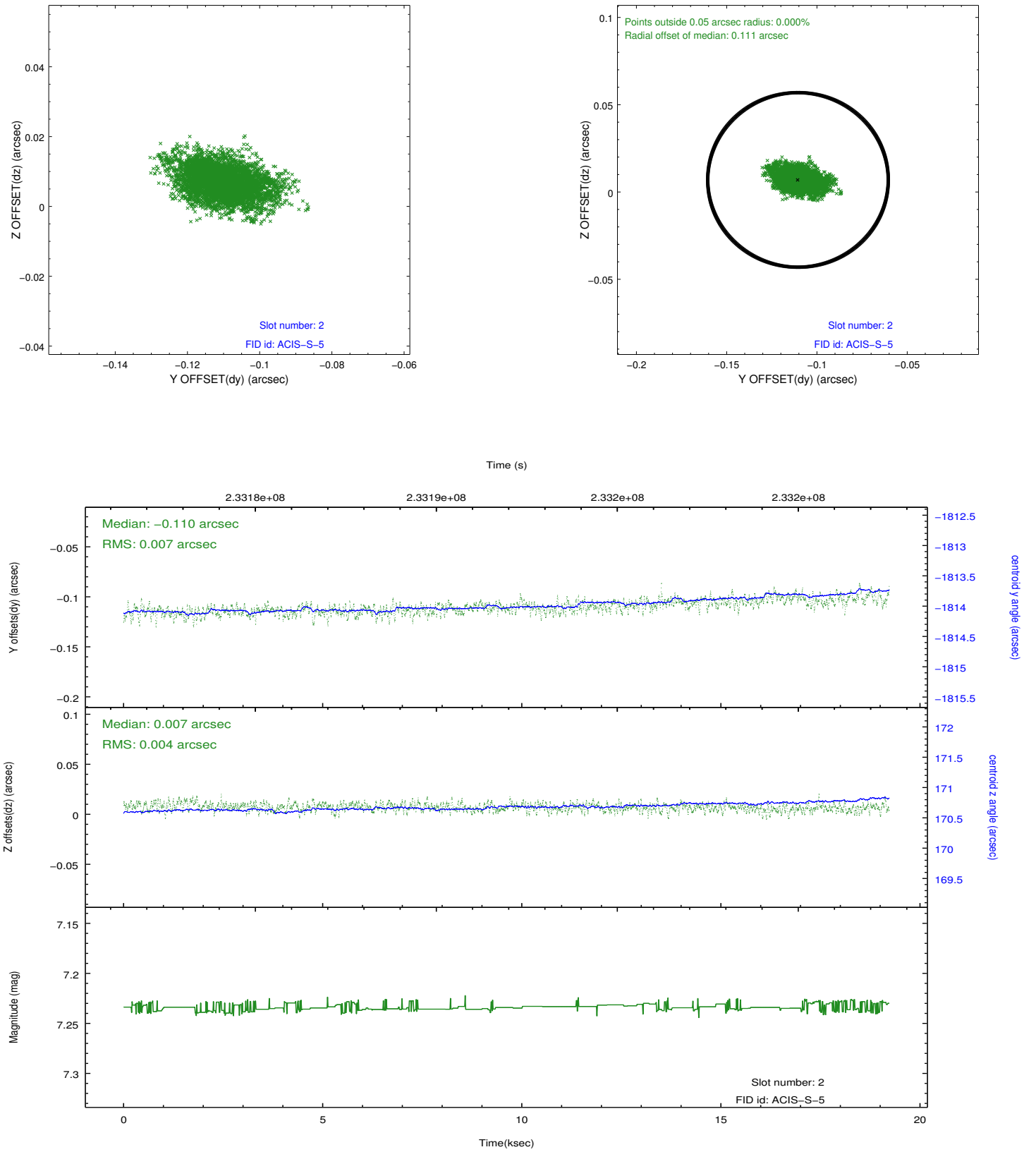
2.5.1 Slot 0



2.5.2 Slot 1



2.5.3 Slot 2



A Summary

A.1 Status

V&V Scientist	Beth Sundheim
V&V Date (YYYY-MM-DD)	2013.01.10
V&V Edition	1
V&V Disposition and Status	OK
V&V Charge Time	19.04959

A.2 Comments