

# V&V Reference Report

## L2 ASCDS Version : 7.6.8

Observation 4243 - L2 Version 001  
Chandra X-Ray Center

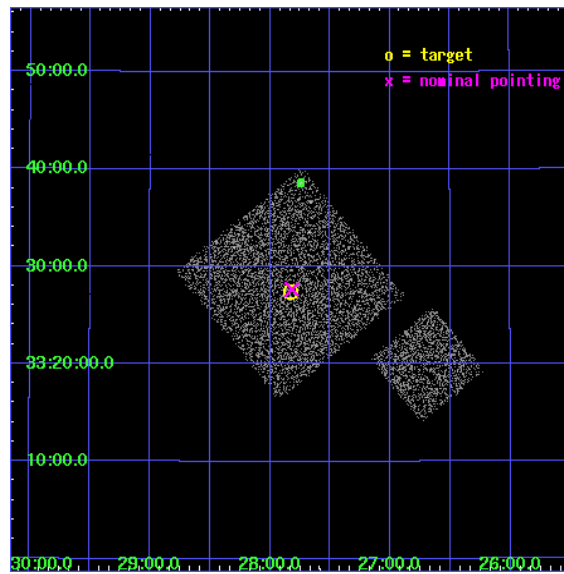
L2 Processing Date : Jul 29 2006

## Contents

<b>1</b>	<b>Front</b>	<b>2</b>
<b>2</b>	<b>OBI</b>	<b>3</b>
2.1	OBI . . . . .	3
2.1.1	Images . . . . .	3
2.1.2	Bias . . . . .	3
2.1.3	Parameters . . . . .	4
2.1.4	Events . . . . .	4
2.2	Compared Parameters . . . . .	5
2.3	Aspect . . . . .	6
2.4	Star Slots . . . . .	9
2.4.1	Slot 3 . . . . .	9
2.4.2	Slot 4 . . . . .	10
2.4.3	Slot 5 . . . . .	11
2.4.4	Slot 6 . . . . .	12
2.4.5	Slot 7 . . . . .	13
2.5	FID Slots . . . . .	14
2.5.1	Slot 0 . . . . .	14
2.5.2	Slot 1 . . . . .	15
2.5.3	Slot 2 . . . . .	16
<b>3</b>	<b>Point Sources</b>	<b>17</b>
<b>A</b>	<b>Summary</b>	<b>18</b>
A.1	Status . . . . .	18
A.2	Comments . . . . .	18

# 1 Front

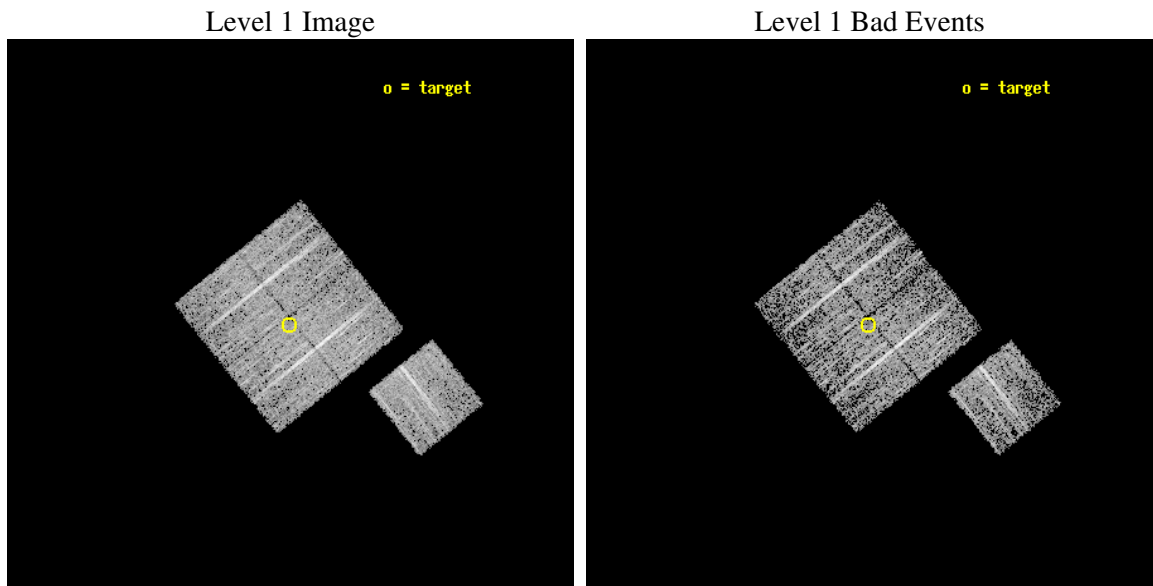
seq_num	900286
obs_id	4243
title	A CHANDRA WIDE-FIELD SURVEY TO MAP THE COSMIC WEB AND INVESTIGATE THE EVOLUTION OF NUCLEAR ACCRETION
observer	Dr. Christine Jones
object	SS6
dtcycle	0
cycle	P
ra_targ	216.957163
dec_targ	33.456918
ra_nom	216.95456058743
dec_nom	33.460993931928
roll_nom	141.01012672186
revision	2
ontime	4674.7999910116
livetime	4613.7202875914
ontime0	4674.7999910116
ontime1	4674.7999910116
ontime2	4674.7999910116
ontime3	4674.7999910116
ontime6	4674.7999910116
l2events	9484



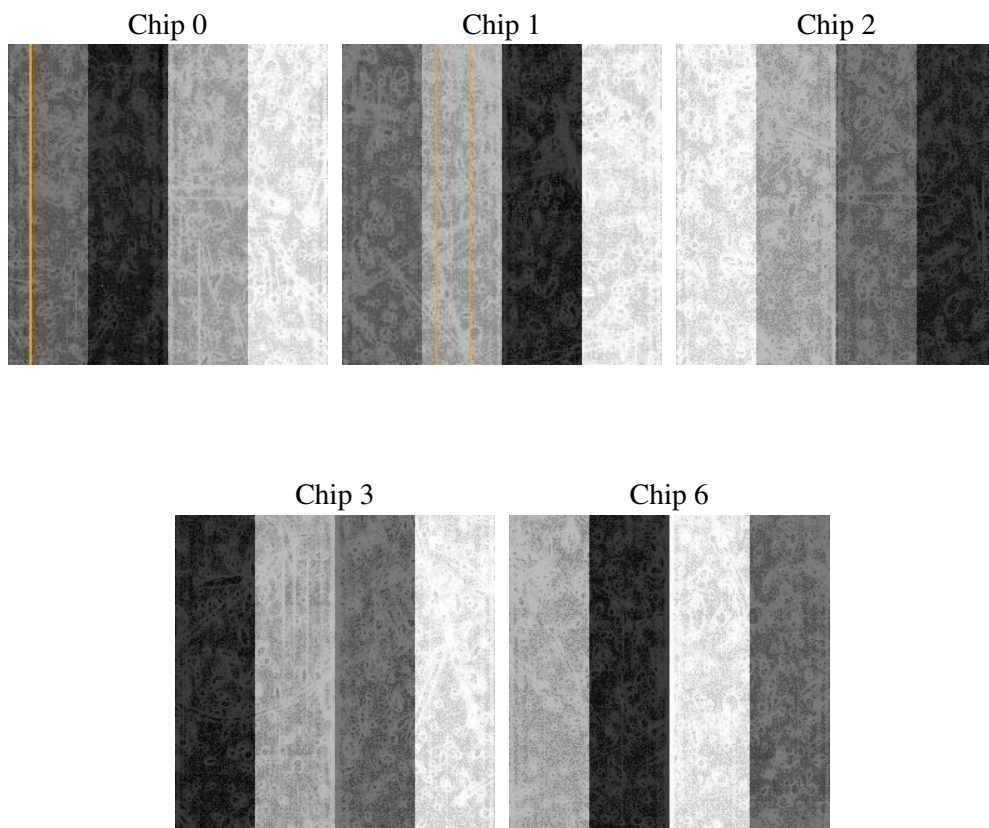
## 2 OBI

### 2.1 OBI

#### 2.1.1 Images



#### 2.1.2 Bias



### 2.1.3 Parameters

obi_num	0
ascdsver	7.6.8
caldsver	3.2.2
date	2006-07-29T18:56:43
revision	2

sched_exp_time	4900.000000
ontime	4680.1091771722
ontime0	4680.1091572344
ontime1	4680.1091771722
ontime2	4680.1091672182
ontime3	4680.1091771722
ontime6	4680.1091572344
l1events	116113

### 2.1.4 Events

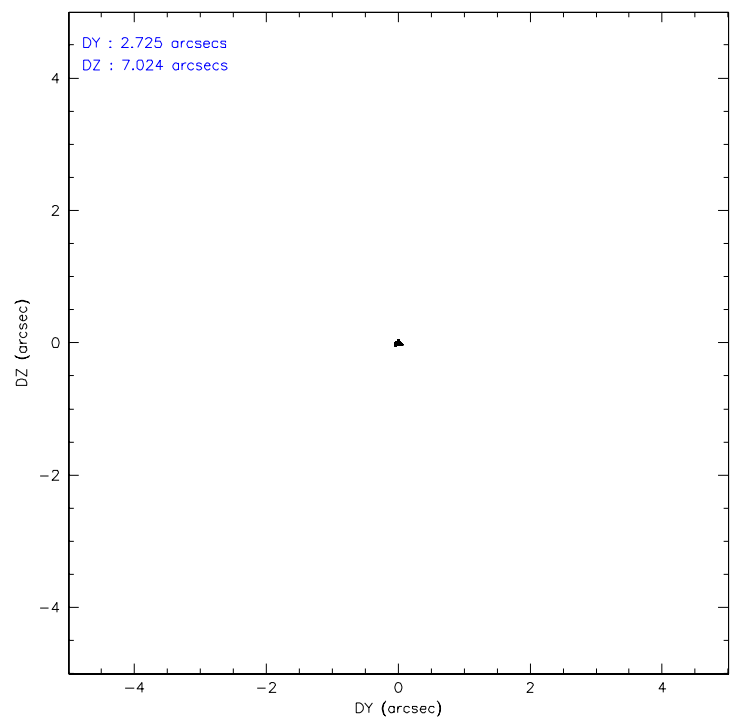
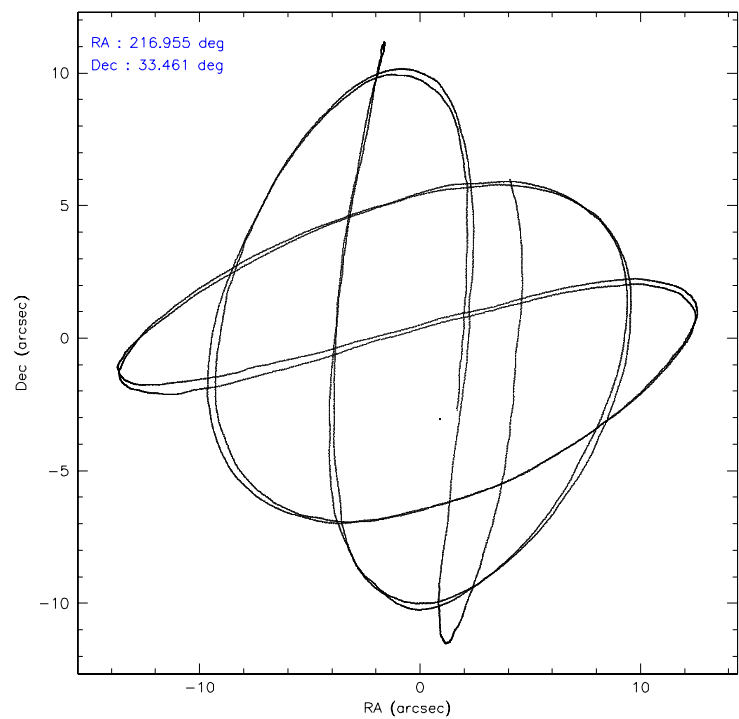
	ccd 0	ccd 1	ccd 2	ccd 3	ccd 6
level 1 events	22162	21971	24766	23596	23618
rejected events	19853	19550	22482	21414	21274
rejected %	89%	88%	90%	90%	90%

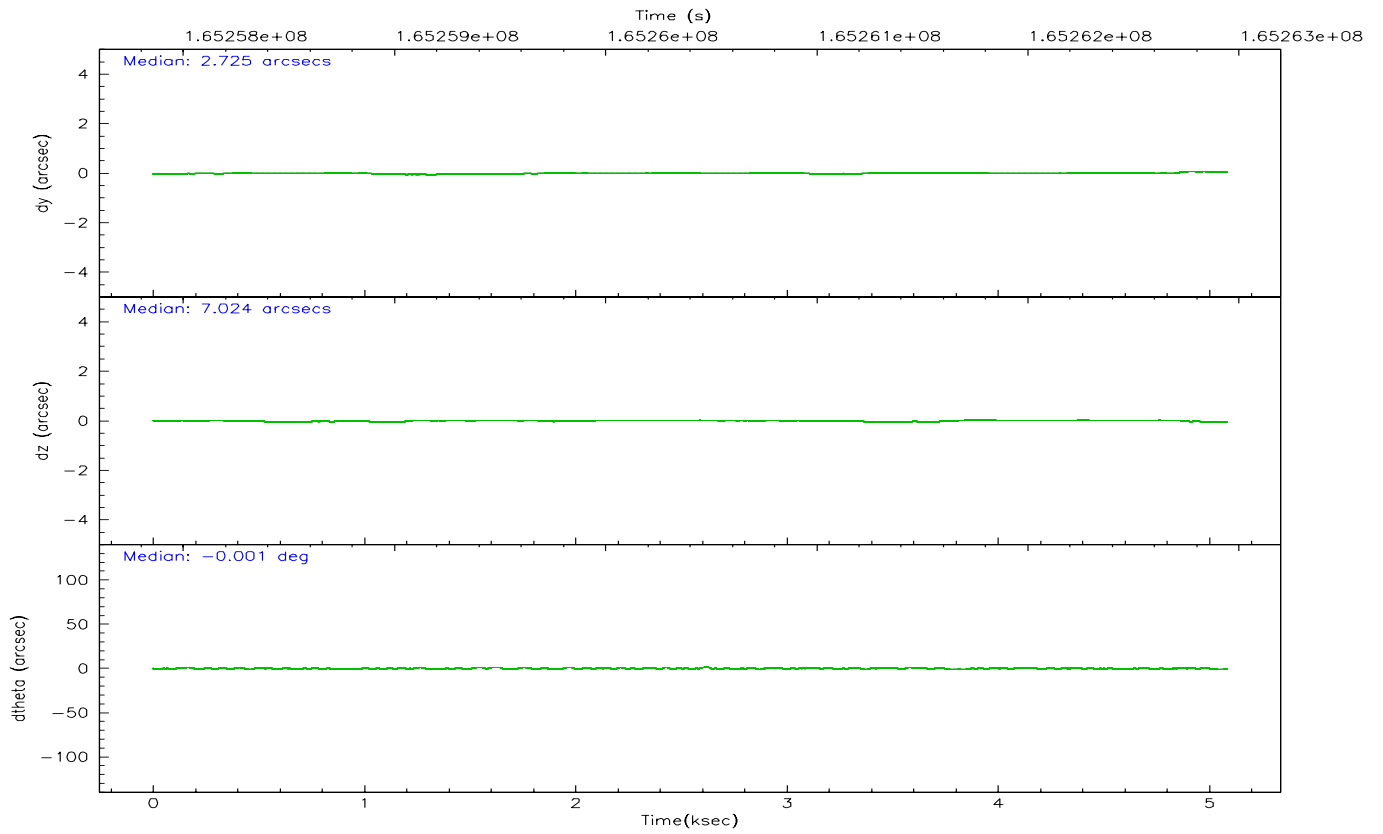
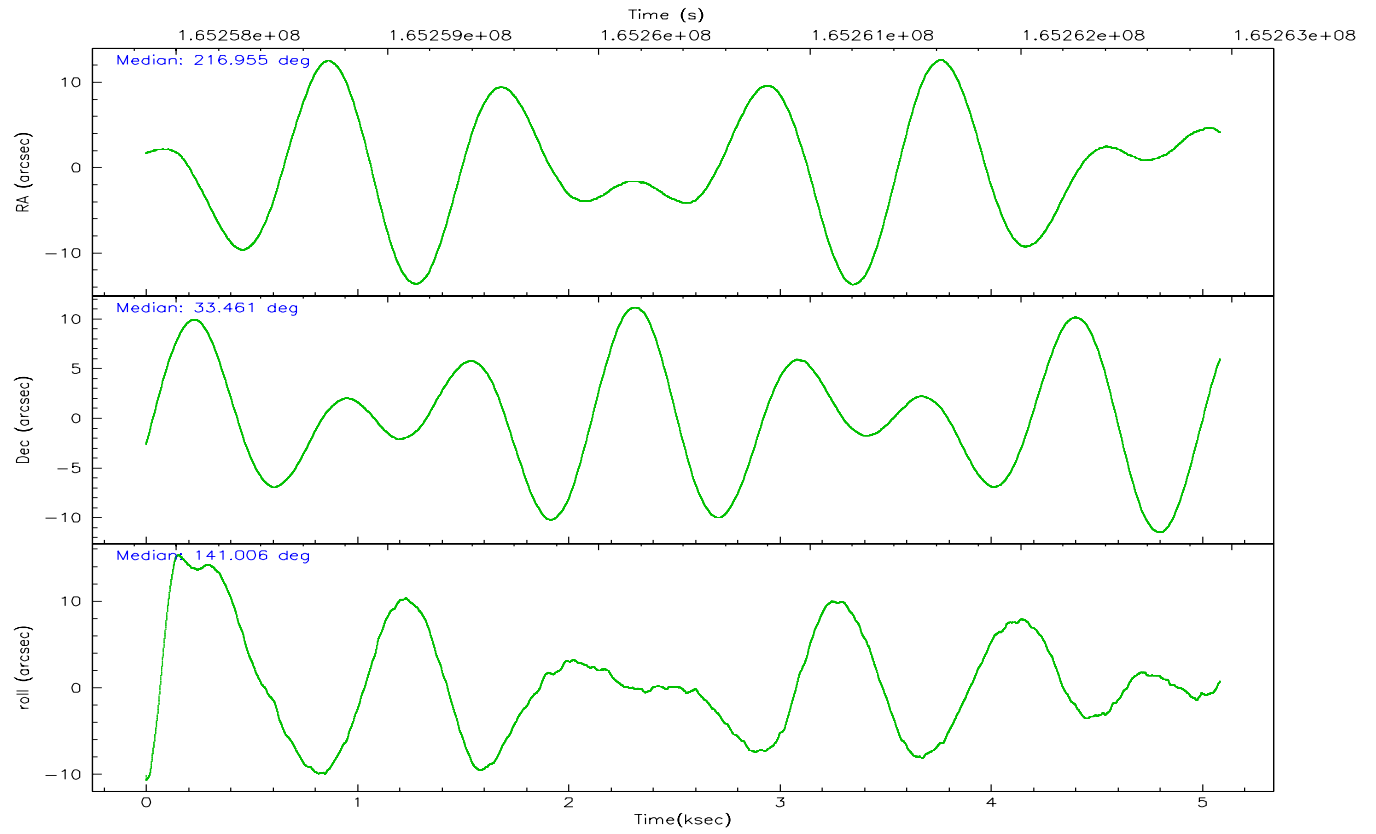
	ccd 0	ccd 1	ccd 2	ccd 3	ccd 6
grade 0 events	846	842	873	778	849
	3%	3%	3%	3%	3%
grade 1 events	15	12	7	10	15
	0%	0%	0%	0%	0%
grade 2 events	526	515	499	491	507
	2%	2%	2%	2%	2%
grade 3 events	275	292	262	265	255
	1%	1%	1%	1%	1%
grade 4 events	256	277	264	261	256
	1%	1%	1%	1%	1%
grade 5 events	689	696	669	787	742
	3%	3%	2%	3%	3%
grade 6 events	408	495	387	389	479
	1%	2%	1%	1%	2%
grade 7 events	19147	18842	21805	20615	20515
	86%	85%	88%	87%	86%

## 2.2 Compared Parameters

Parameter	Planned	Actual	Parameter	Planned	Actual
Instrument	ACIS	ACIS	Obspar format version number	6	6
Detector	ACIS-01236	ACIS-01236	Obspar file type	PREDICTED	ACTUAL
Grating	NONE	NONE	Obspar update status	NONE	UPDATED
Data mode	VFAINT	VFAINT	On-chip summing requested	N	N
Observation mode	POINTING	POINTING	Subarray requested	NONE	NONE
Pointing RA	216.986995	216.9545605874346	Alternating exposures requested	N	N
Pointing Dec	33.456838	33.46099393192804	Primary exposure time	0.000000	3.1
Pointing Roll	140.783550	141.0101267218645			
SIM focus pos (mm)	-0.782348	-0.7809083437167272			
SIM defocus (mm)	0	0.001439871863259334			
SIM translation stage pos (mm)	-233.592463	-233.5874344608287			
SIM translation stage offset (mm)	0	-0.005018542100998502			
Observation start time	165258040.184000	165257664.71934			
Observation start date	2003-03-28T16:59:36	2003-03-28T16:54:24			
Observation end time	165262940.184000	165263074.66957			
Observation end date	2003-03-28T18:21:16	2003-03-28T18:24:34			
Read mode	TIMED	TIMED			

## 2.3 Aspect



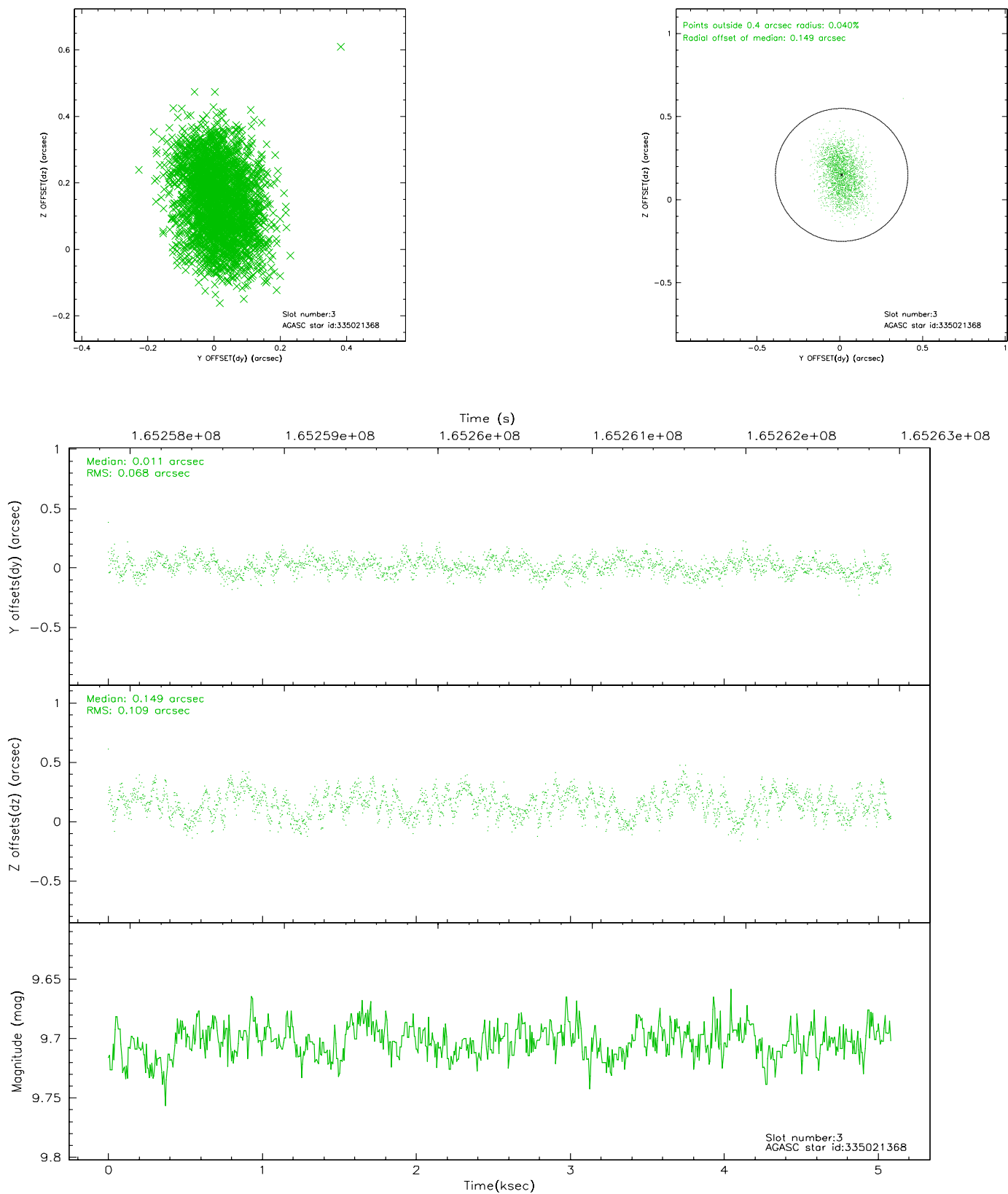


### Slot Statistics

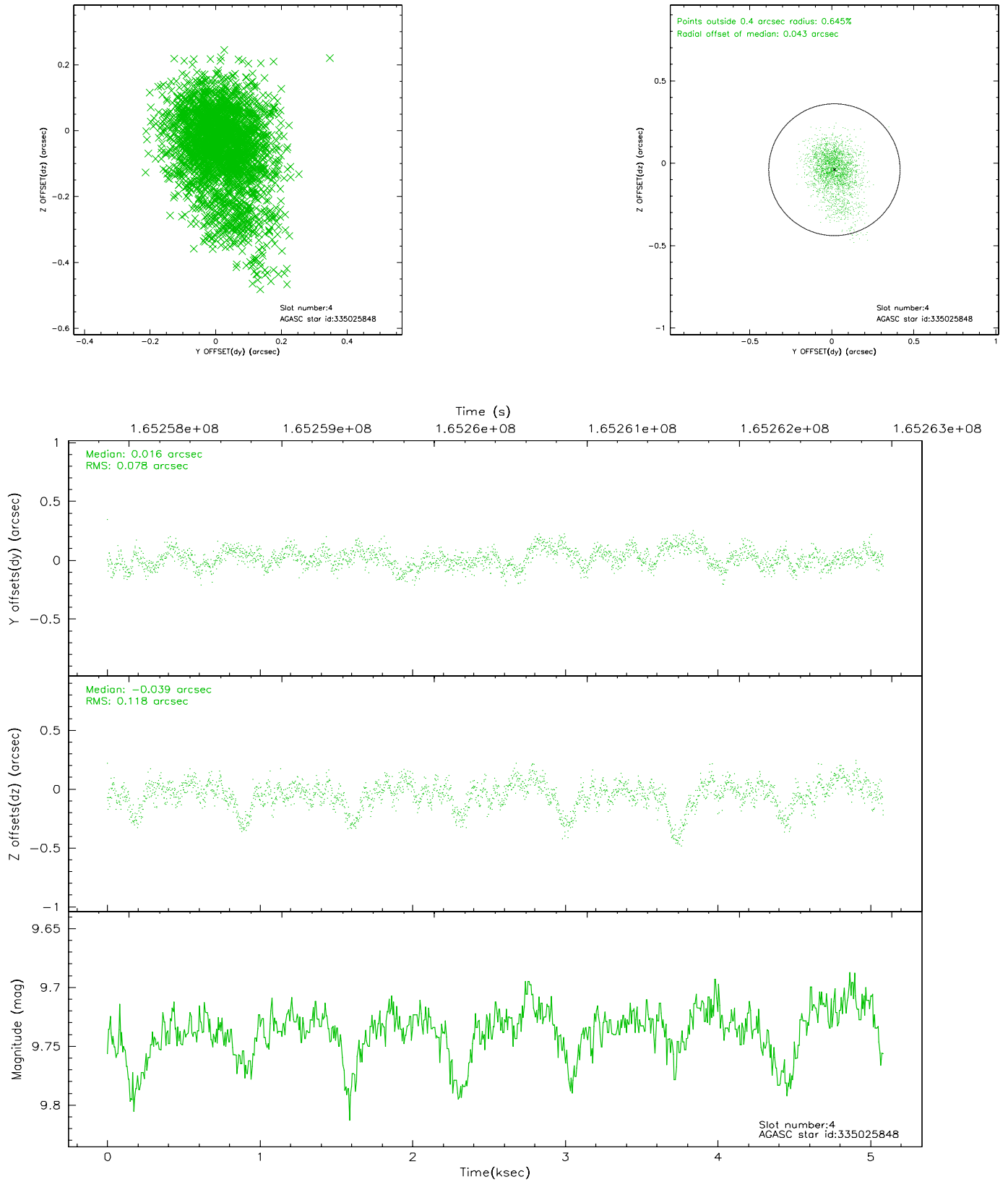
slot	status	id	mag	n_pts	med_dy	med_dz	dr1	dr2	ra	dec	mean_y	mean_z
0	FID	ACIS-I-1	7.25	1241	-0.006	0.033	0.006	0.010	0.000000	0.000000	937.06	-830.40
1	FID	ACIS-I-5	7.24	1241	-0.053	0.049	0.005	0.009	0.000000	0.000000	-1810.40	1066.56
2	FID	ACIS-I-6	7.26	1241	-0.033	-0.011	0.007	0.012	0.000000	0.000000	401.33	1712.32
3	GUIDE	335021368	9.70	2481	0.011	0.149	0.138	0.216	217.529643	33.934817	-164.44	-2360.76
4	GUIDE	335025848	9.74	2482	0.016	-0.039	0.141	0.263	217.530531	33.778292	-525.16	-1928.93
5	GUIDE	335028240	9.15	2482	0.021	-0.255	0.081	0.129	216.746851	33.385009	396.81	655.45
6	GUIDE	335028696	9.19	2473	0.025	0.108	0.088	0.150	217.260519	33.844112	249.34	-1597.39
7	GUIDE	335029368	10.12	2480	-0.081	0.055	0.132	0.222	217.181018	33.065030	-1344.48	721.93

## 2.4 Star Slots

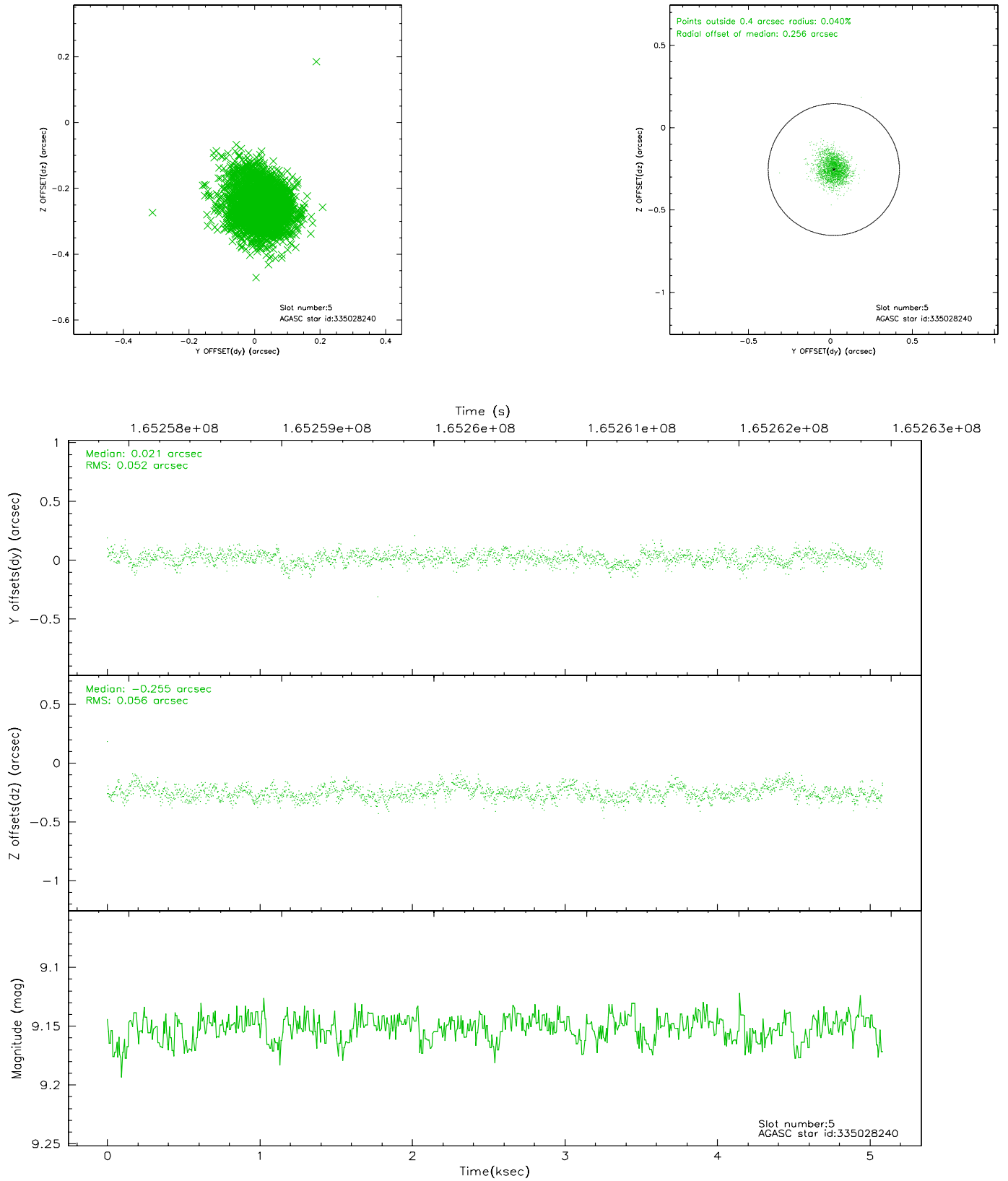
### 2.4.1 Slot 3



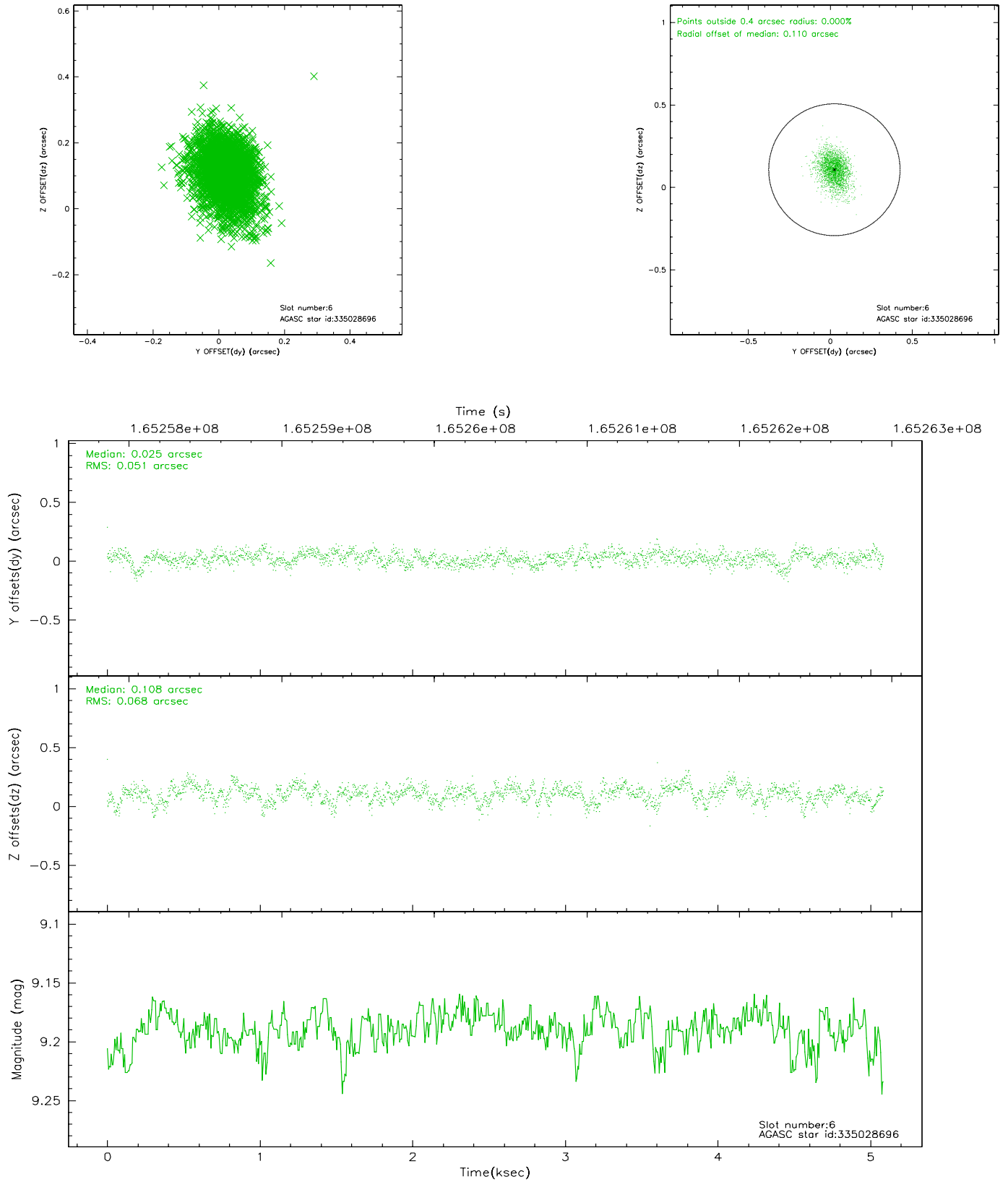
## 2.4.2 Slot 4



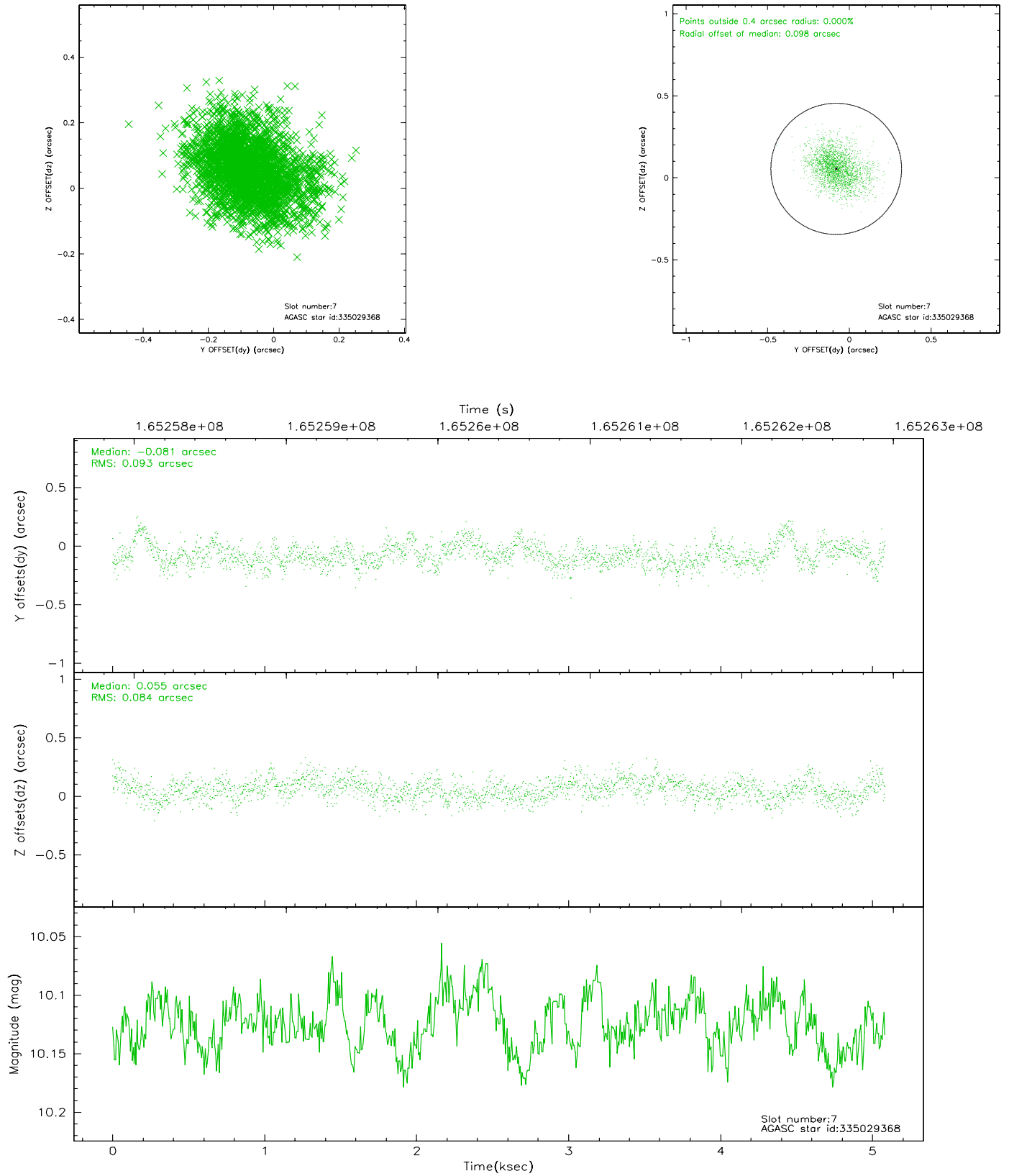
### 2.4.3 Slot 5



## 2.4.4 Slot 6

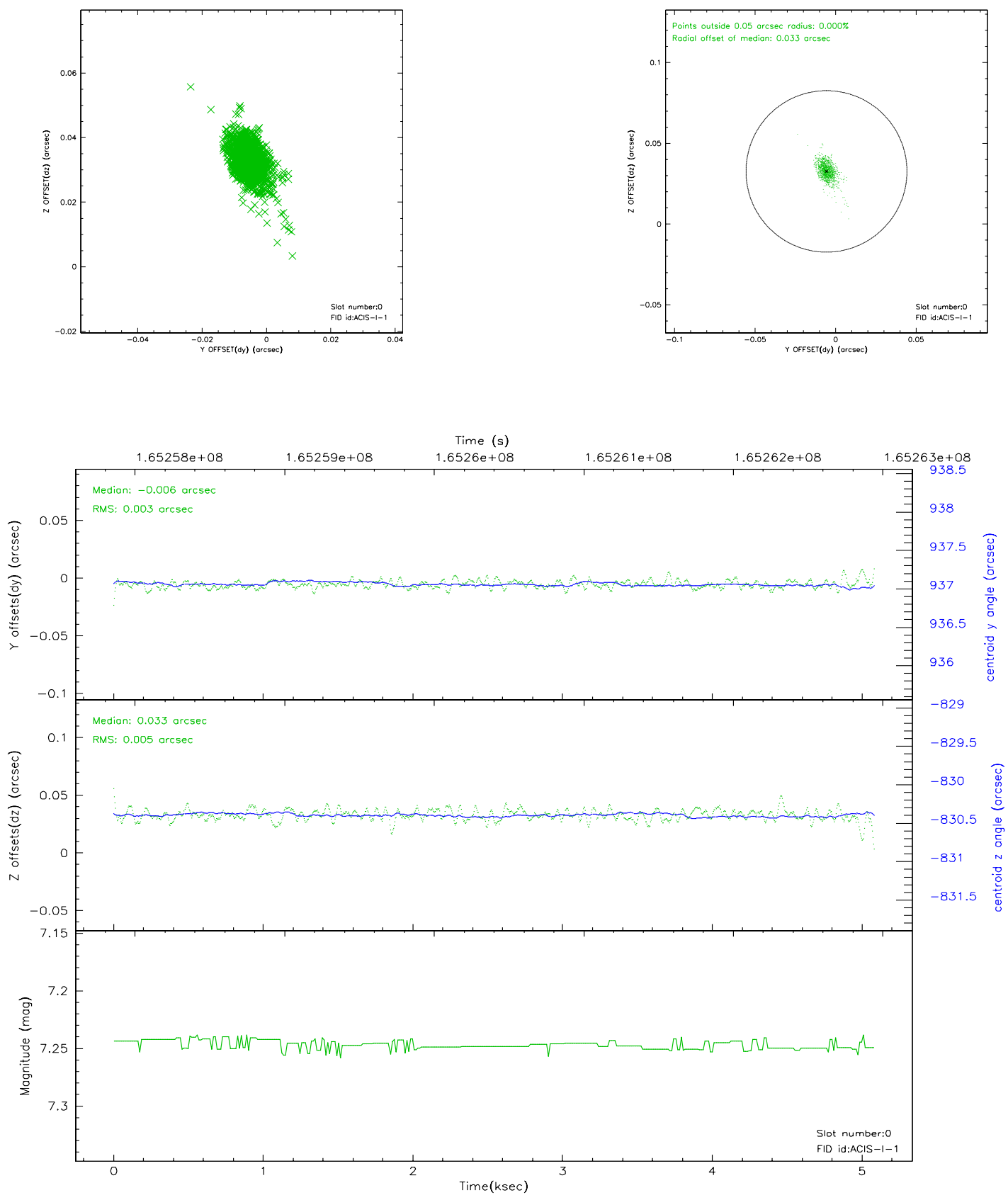


## 2.4.5 Slot 7

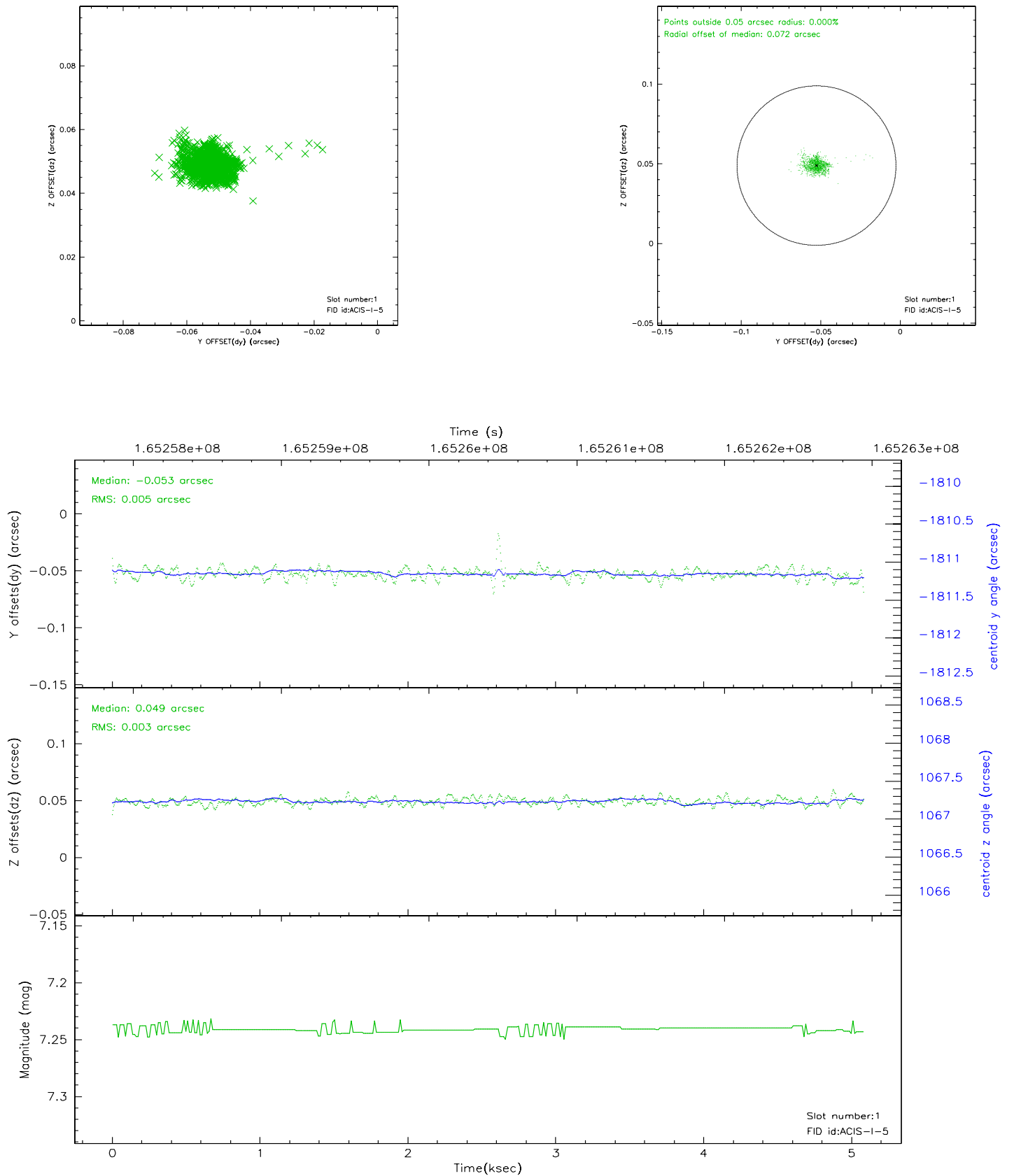


## 2.5 FID Slots

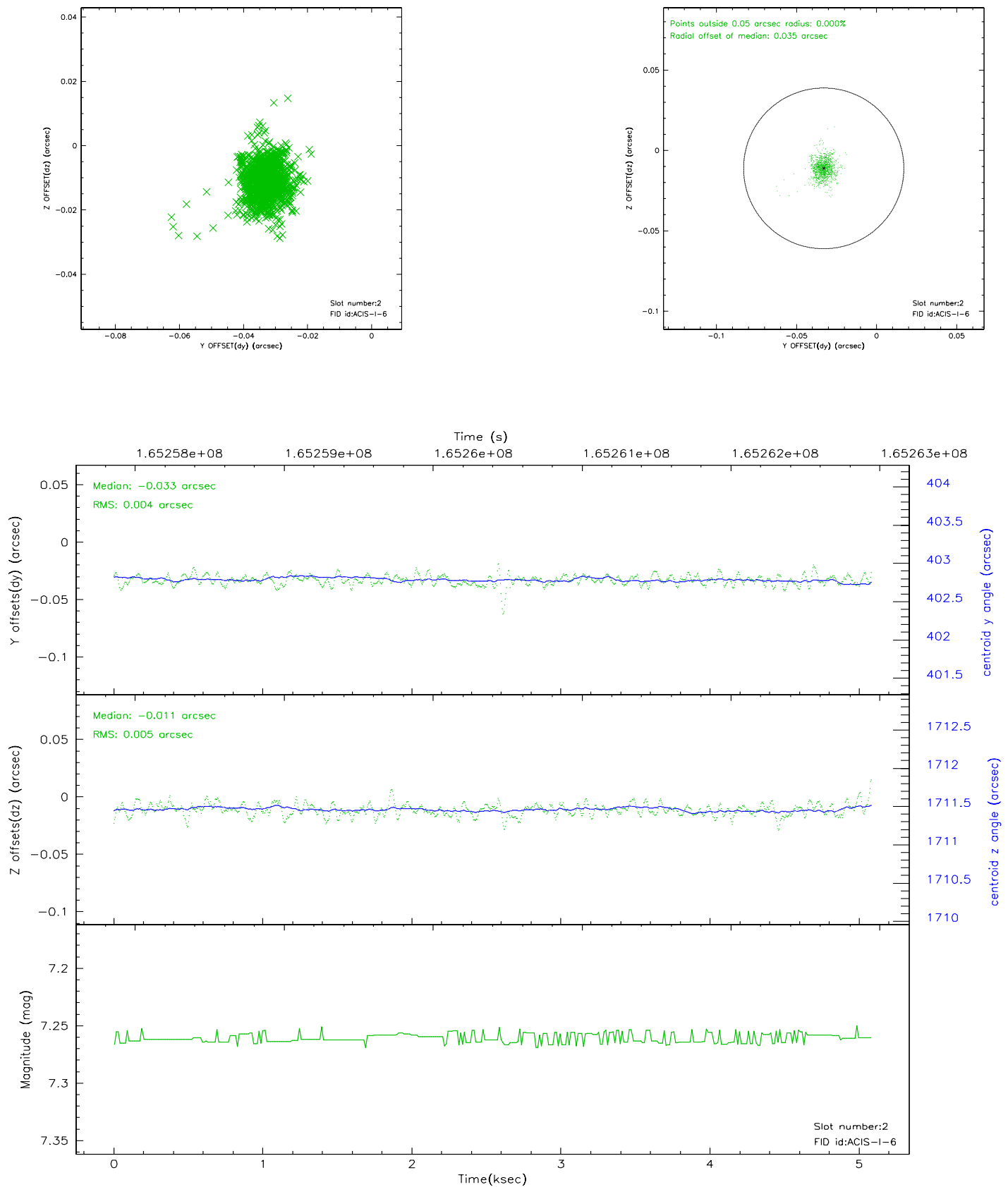
### 2.5.1 Slot 0



## 2.5.2 Slot 1



### 2.5.3 Slot 2



### 3 Point Sources

10.91 arcmin



## A Summary

### A.1 Status

V&V Scientist	Jen Lauer
V&V Date (YYYY-MM-DD)	2006.07.30
V&V Edition	1
V&V Disposition and Status	OK
V&V Charge Time	4.675

### A.2 Comments