

V&V Reference Report

L2 ASCDS Version : 10.3.3

Observation 17403 - L2 Version 1
Chandra X-Ray Center

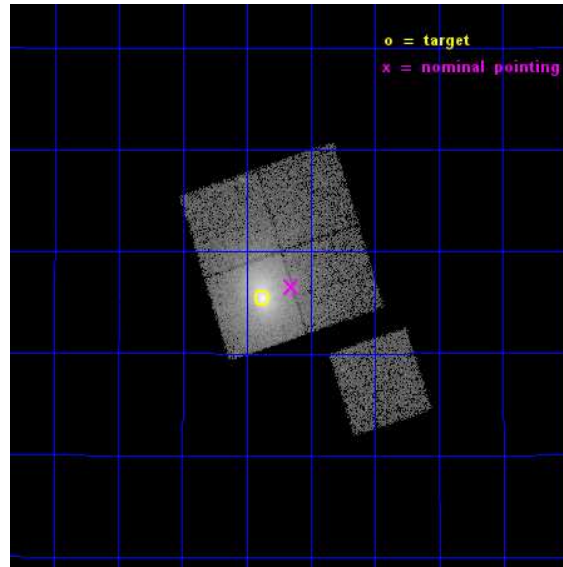
L2 Processing Date : Apr 8 2015

Contents

1	Front	2
2	OBI	3
2.1	OBI	3
2.1.1	Images	3
2.1.2	Bias	3
2.1.3	Parameters	4
2.1.4	Events	4
2.2	Compared Parameters	5
2.3	Aspect	6
2.4	Star Slots	9
2.4.1	Slot 3	9
2.4.2	Slot 4	10
2.4.3	Slot 5	11
2.4.4	Slot 6	12
2.4.5	Slot 7	13
2.5	FID Slots	14
2.5.1	Slot 0	14
2.5.2	Slot 1	15
2.5.3	Slot 2	16
A	Summary	17
A.1	Status	17
A.2	Comments	17

1 Front

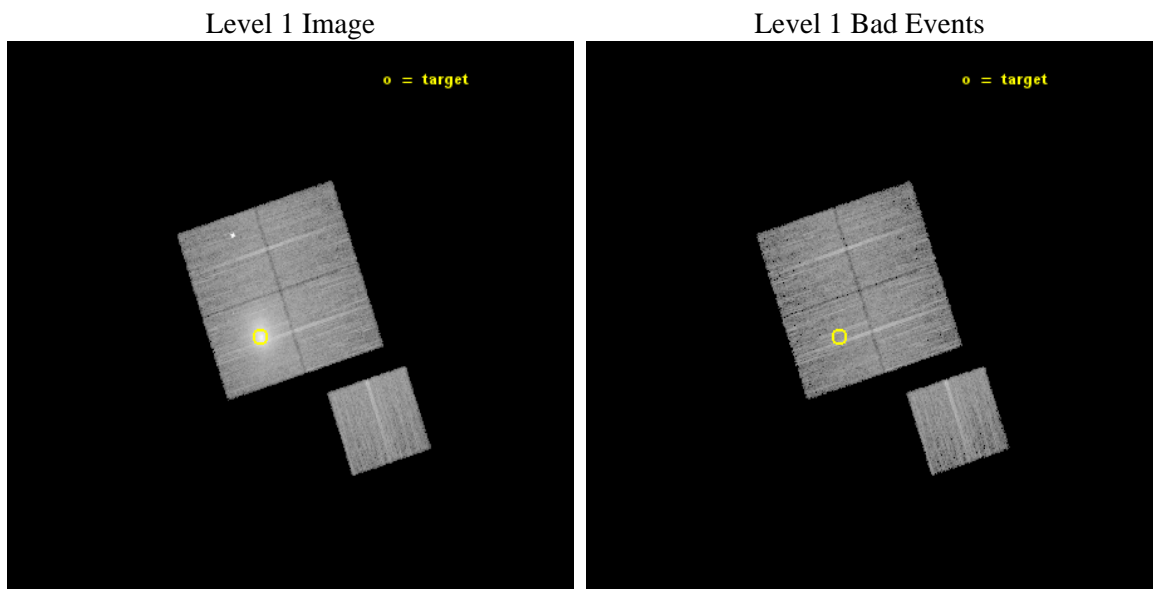
seq_num	890103	Sequence number
obs_id	17403	Observation id
title	AO-16 Calibration Observations of A1795	Proposal title
observer	Dr. CXC Calibration	Principal investigator
object	A1795	Source name
dtcycle	0	
cycle	P	events from which exps? Prim/Second/Both
ra_targ	207.219583	Observer's specified target RA [deg]
dec_targ	26.590833	Observer's specified target Dec [deg]
ra_nom	207.16273750016	Nominal RA [deg]
dec_nom	26.609466488181	Nominal Dec [deg]
roll_nom	161.85264400167	Nominal Roll [deg]
revision	1	Processing version of data
ontime	14777.342386603	Sum of GTIs [s]
livetime	14584.265529401	Livetime [s]
ontime0	14777.219266653	Sum of GTIs [s]
ontime1	14777.260306597	Sum of GTIs [s]
ontime2	14777.30134666	Sum of GTIs [s]
ontime3	14777.342386603	Sum of GTIs [s]
ontime6	14774.03714633	Sum of GTIs [s]
l2events	131805	Number of level 2 events



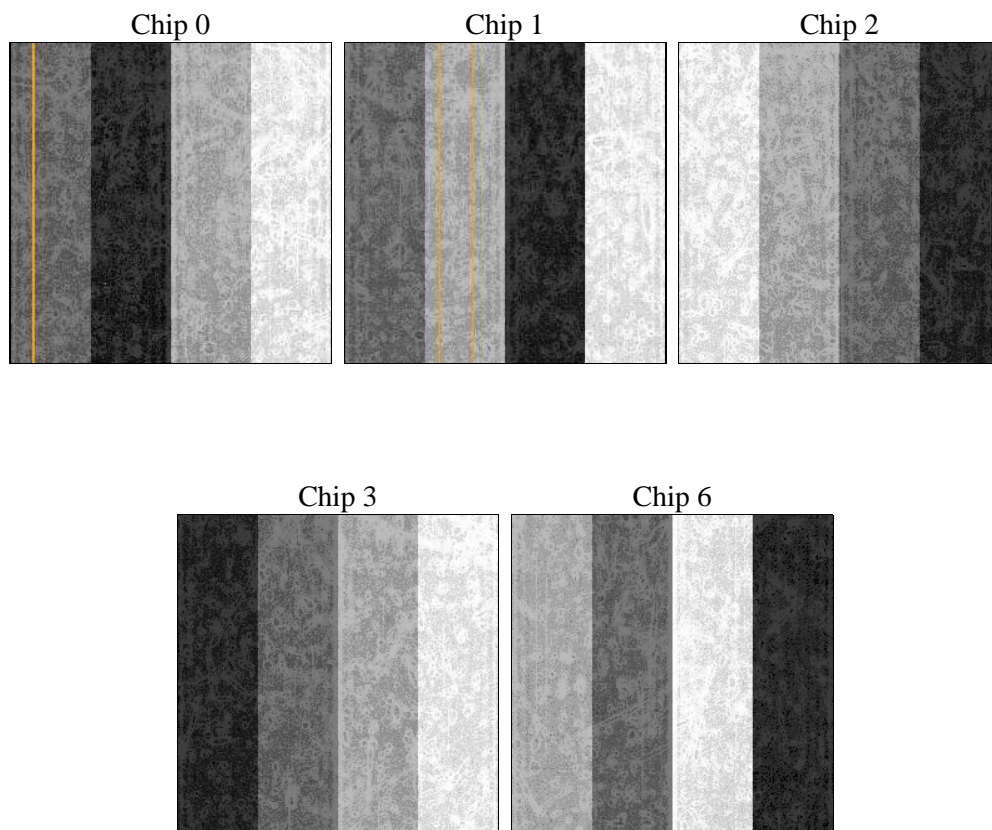
2 OBI

2.1 OBI

2.1.1 Images



2.1.2 Bias



2.1.3 Parameters

obi_num	0	Obi number	sched_exp_time	15000.000000	[s] Scheduled observation exposure time
ascdsver	10.3.3	Processing system revision	ontime	14777.342386603	Sum of GTIs [s]
caldsver	4.6.7	 	ontime0	14777.219266653	Sum of GTIs [s]
date	2015-04-09T02:52:35	Date and time of file creation	ontime1	14777.260306597	Sum of GTIs [s]
revision	1	Processing version of data	ontime2	14777.30134666	Sum of GTIs [s]
			ontime3	14777.342386603	Sum of GTIs [s]
			ontime6	14774.03714633	Sum of GTIs [s]
			l1events	459006	Number of level 1 events

2.1.4 Events

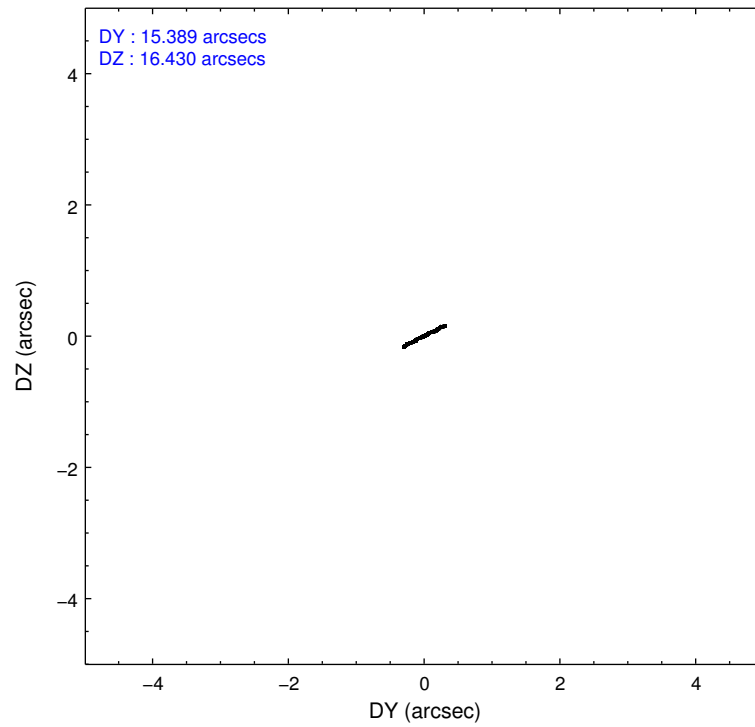
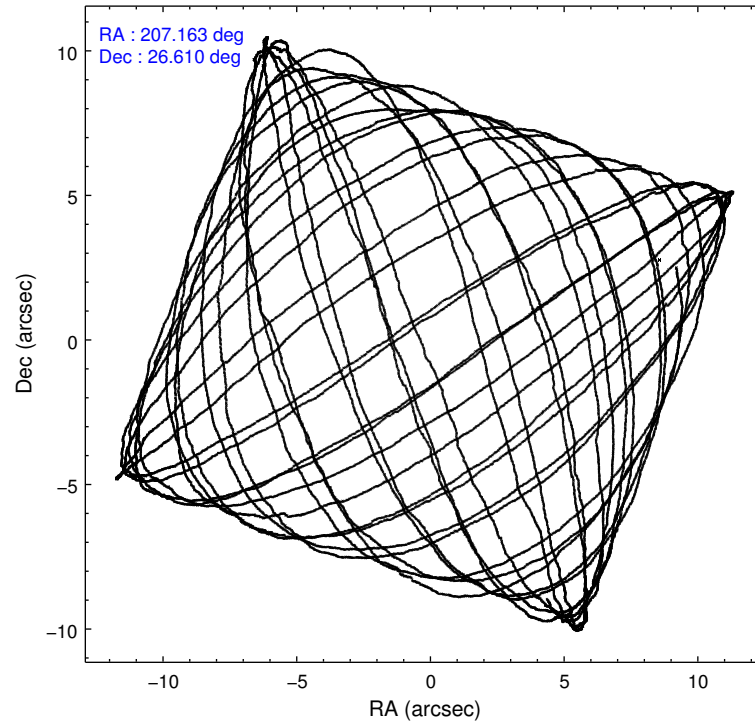
	ccd 0	ccd 1	ccd 2	ccd 3	ccd 6
level 1 events	68396	78698	79004	158637	74271
rejected events	58608	59610	66363	62924	65593
rejected %	85%	75%	83%	39%	88%

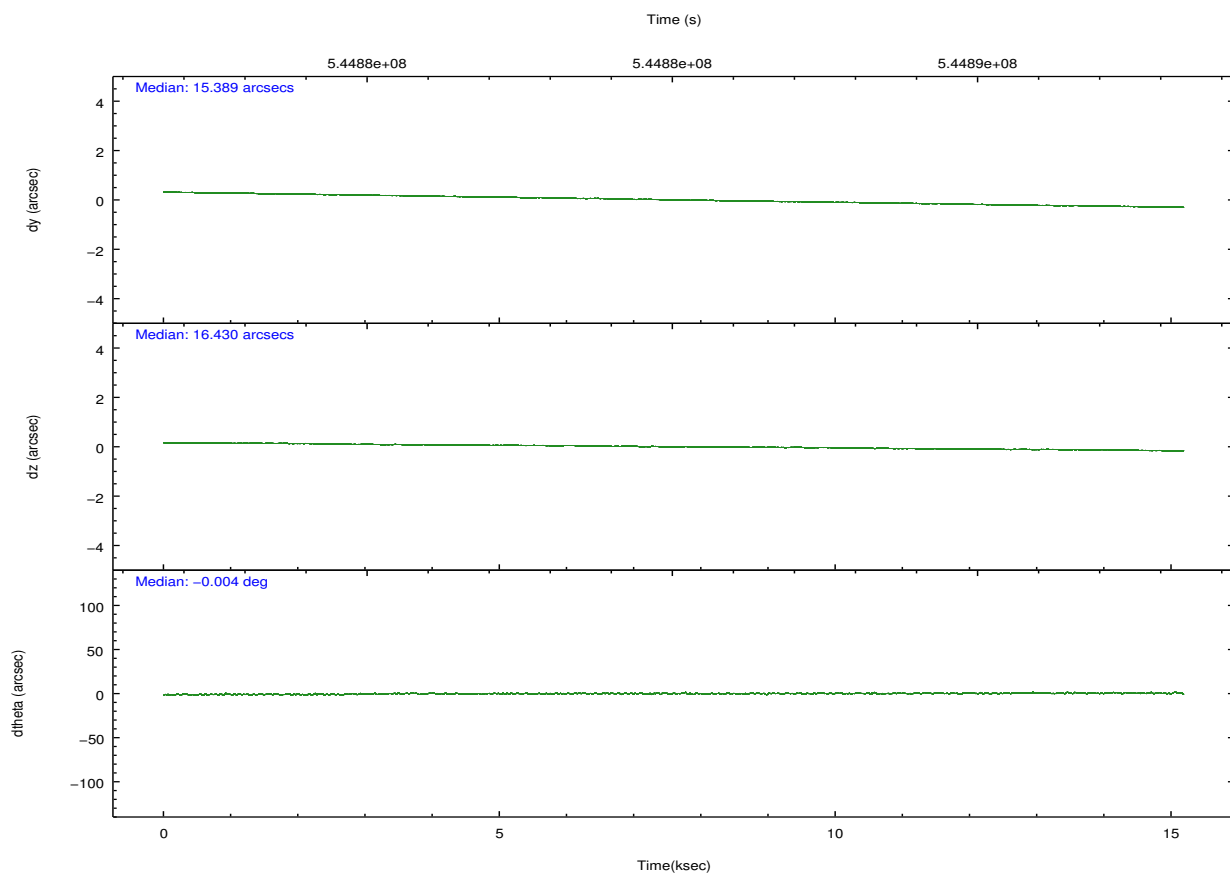
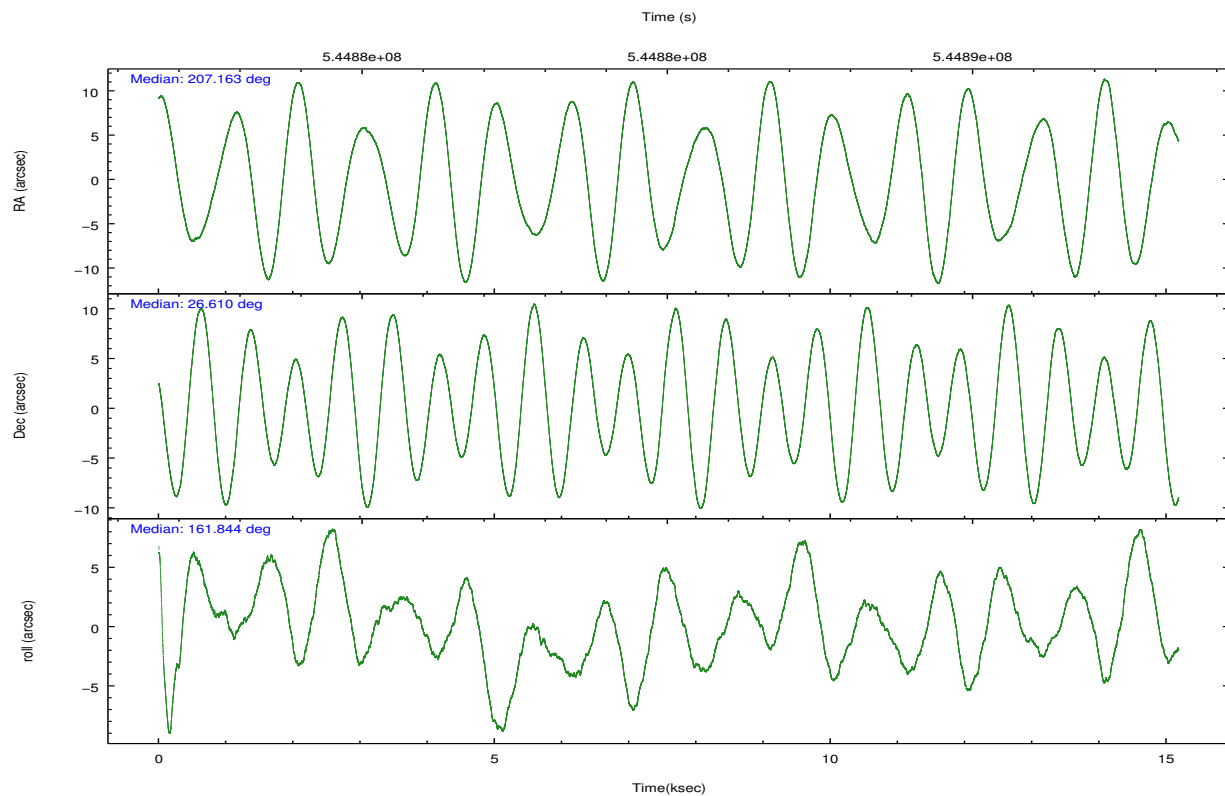
	ccd 0	ccd 1	ccd 2	ccd 3	ccd 6
grade 0 events	4108	11899	6916	74530	2872
	6%	15%	8%	46%	3%
grade 1 events	34	61	57	304	28
	0%	0%	0%	0%	0%
grade 2 events	2104	2815	2161	10409	2099
	3%	3%	2%	6%	2%
grade 3 events	866	949	935	3490	758
	1%	1%	1%	2%	1%
grade 4 events	855	1011	970	3438	763
	1%	1%	1%	2%	1%
grade 5 events	3202	3330	2874	3823	3246
	4%	4%	3%	2%	4%
grade 6 events	1858	2416	1665	3860	2190
	2%	3%	2%	2%	2%
grade 7 events	55369	56217	63426	58783	62315
	80%	71%	80%	37%	83%

2.2 Compared Parameters

Parameter	Planned	Actual	Parameter	Planned	Actual
Instrument	ACIS	ACIS	Obspar format version number	7	7
Detector	ACIS-01236	ACIS-01236	Obspar file type	PREDICTED	ACTUAL
Grating	NONE	NONE	Obspar update status	NONE	UPDATED
Data mode	VFAINT	VFAINT	Number of optional ACIS chips dropped	0	0
Observation mode	POINTING	POINTING	On-chip summing requested	N	N
[deg] Pointing RA	207.192906	207.1627375001606	Subarray requested	NONE	NONE
[deg] Pointing Dec	26.615266	26.60946648818113	Alternating exposures requested	N	N
[deg] Pointing Roll	161.630435	161.8526440016726	[s] Primary exposure time	0.000000	3.1
[s] Window start time (MET)	544233667.184000	544233667.184000			
[s] Window stop time (MET)	546739267.184000	546739267.184000			
[mm] SIM focus pos	-0.782348	-0.7809083437167272			
[mm] SIM defocus	0	0.001439871863259334			
[mm] SIM translation stage pos	-224.862463	-224.8602460491139			
[mm] SIM translation stage offset	-8.73	-8.732206953815762			
[s] Observation start time (MET)	544877629.184000	544877253.68513			
Observation start date	2015-04-08T10:52:42	2015-04-08T10:47:33			
[s] Observation end time (MET)	544892629.184000	544892763.4735			
Observation end date	2015-04-08T15:02:42	2015-04-08T15:06:03			
Read mode	TIMED	TIMED			

2.3 Aspect



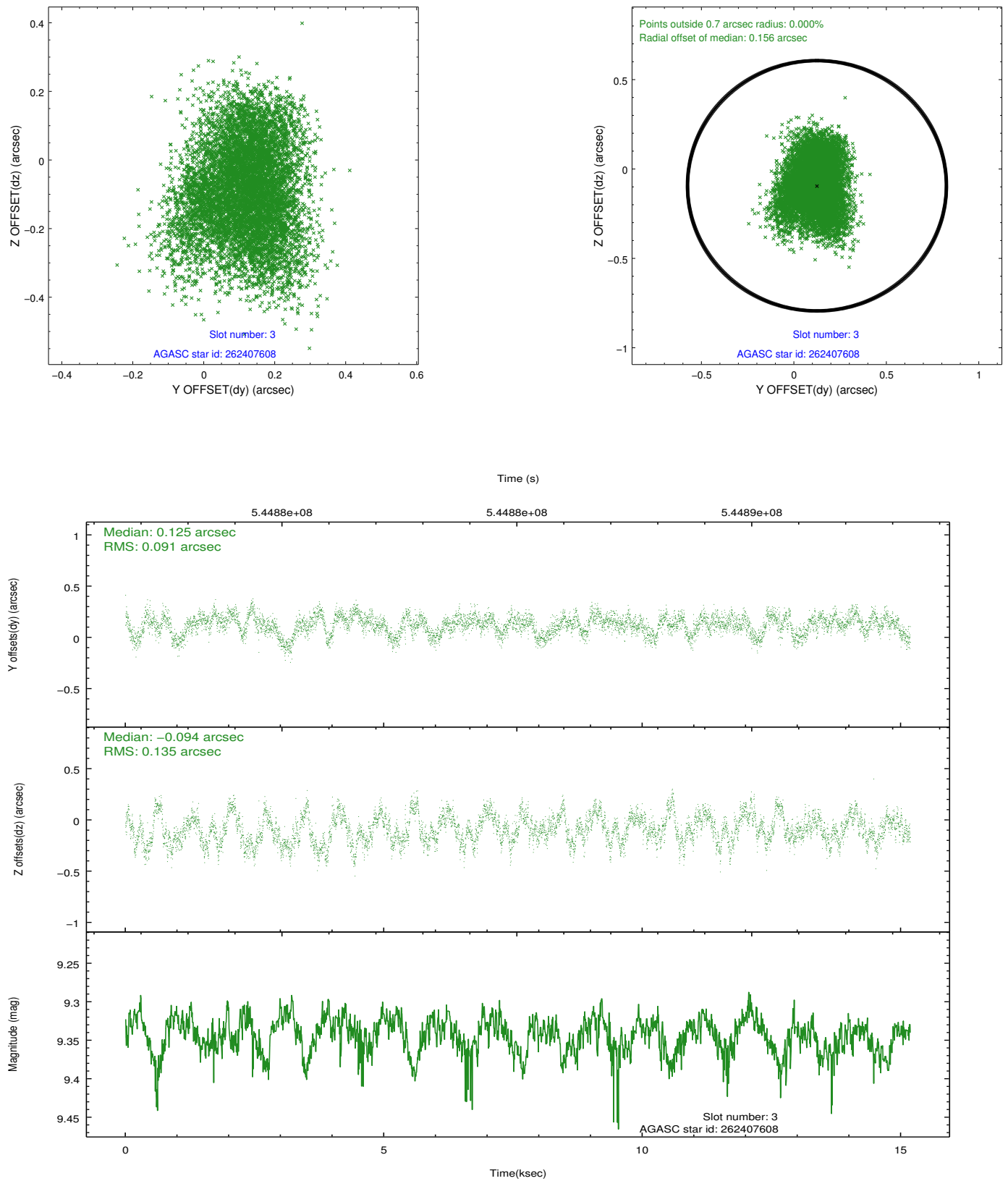


Slot Statistics

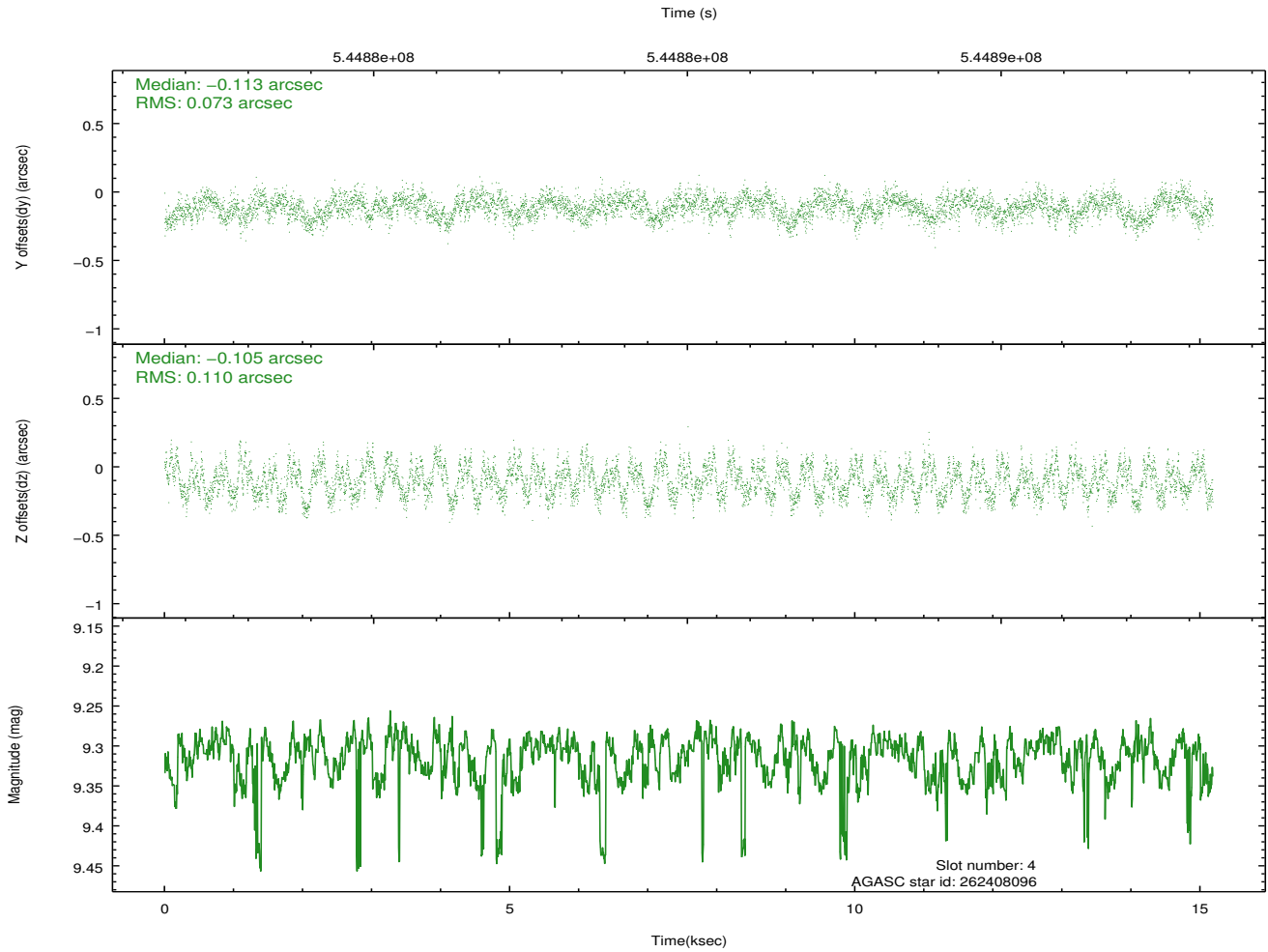
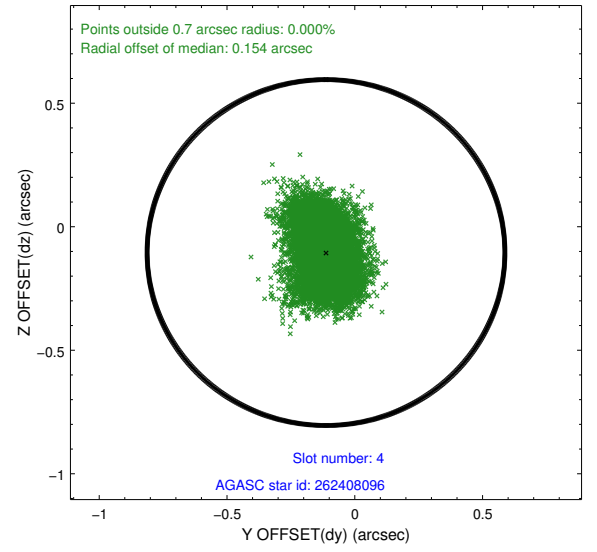
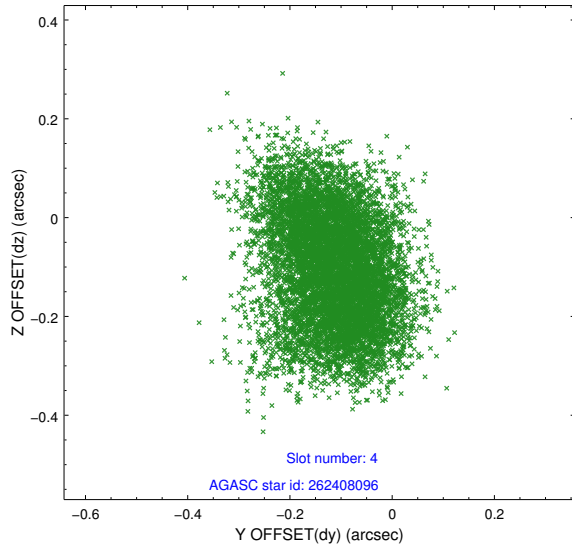
slot	status	used	id	mag	n_pts	med_dy	med_dz	dr1	dr2	ra	dec	mean_y	mean_z
0	FID		ACIS-I-1	7.26	3701	0.210	-0.181	0.009	0.029	0.000000	0.000000	924.14	-1019.49
1	FID		ACIS-I-5	7.25	3702	-0.382	0.148	0.008	0.016	0.000000	0.000000	-1824.46	878.03
2	FID		ACIS-I-6	7.28	3703	0.081	0.103	0.009	0.019	0.000000	0.000000	389.14	1522.91
3	GUIDE	used	262407608	9.34	7406	0.125	-0.094	0.175	0.280	207.378401	26.435507	-771.07	425.46
4	GUIDE	used	262408096	9.31	7400	-0.113	-0.105	0.142	0.222	207.011678	26.515421	441.57	525.03
5	GUIDE	used	262408512	7.99	7404	0.030	0.205	0.081	0.131	207.800210	27.128796	-1261.78	-2371.72
6	GUIDE	used	262408936	9.60	7399	-0.093	0.224	0.177	0.283	207.154731	26.726554	242.59	-341.19
7	GUIDE	used	262411960	9.68	7393	0.066	-0.235	0.148	0.234	207.327895	25.881727	-1247.00	2368.07

2.4 Star Slots

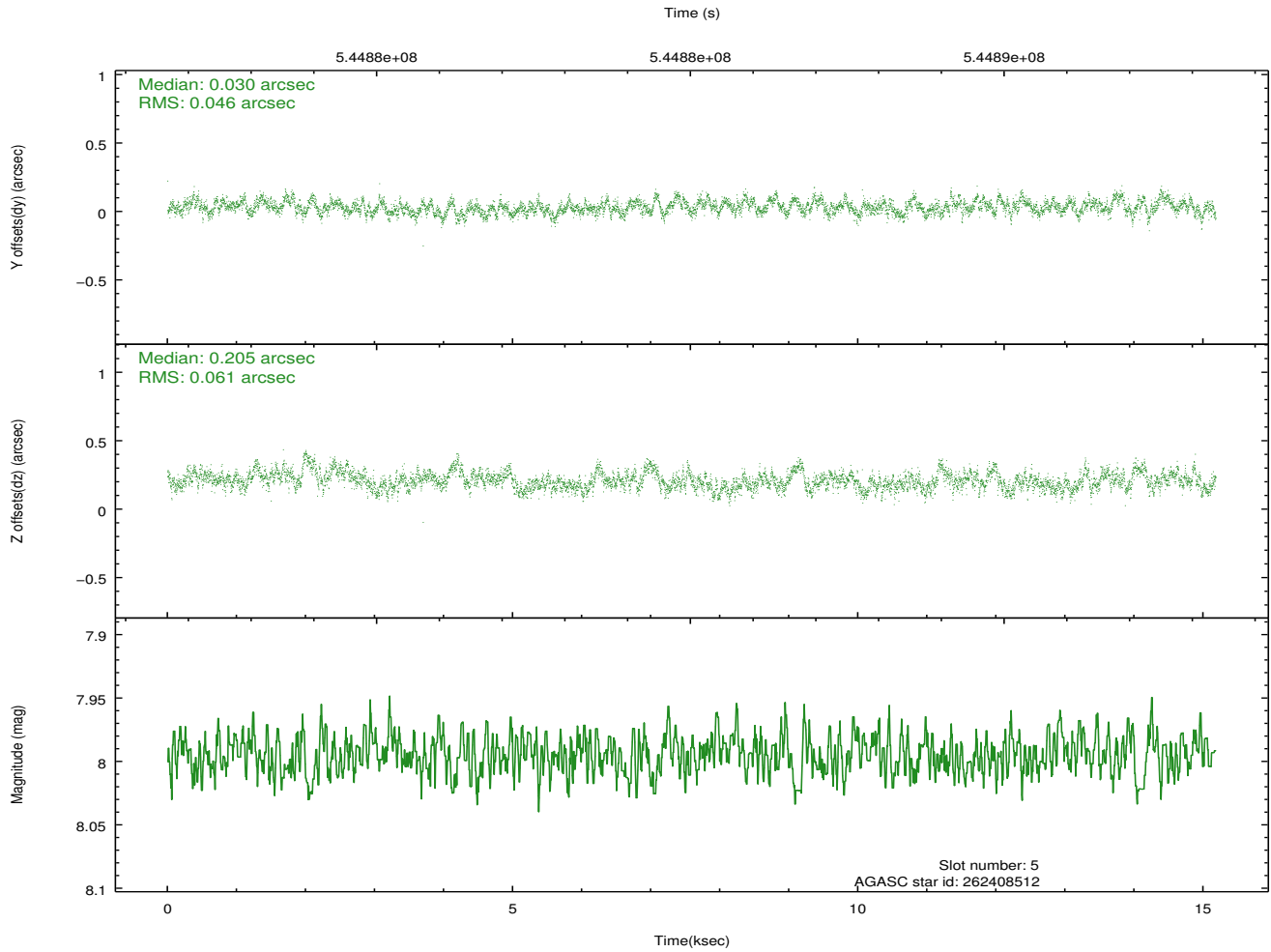
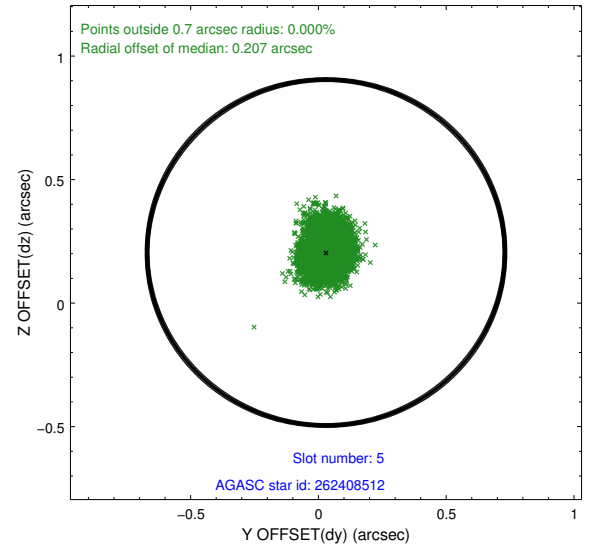
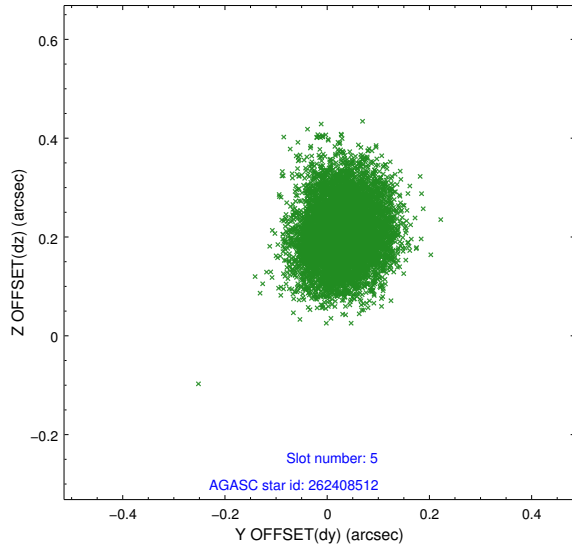
2.4.1 Slot 3



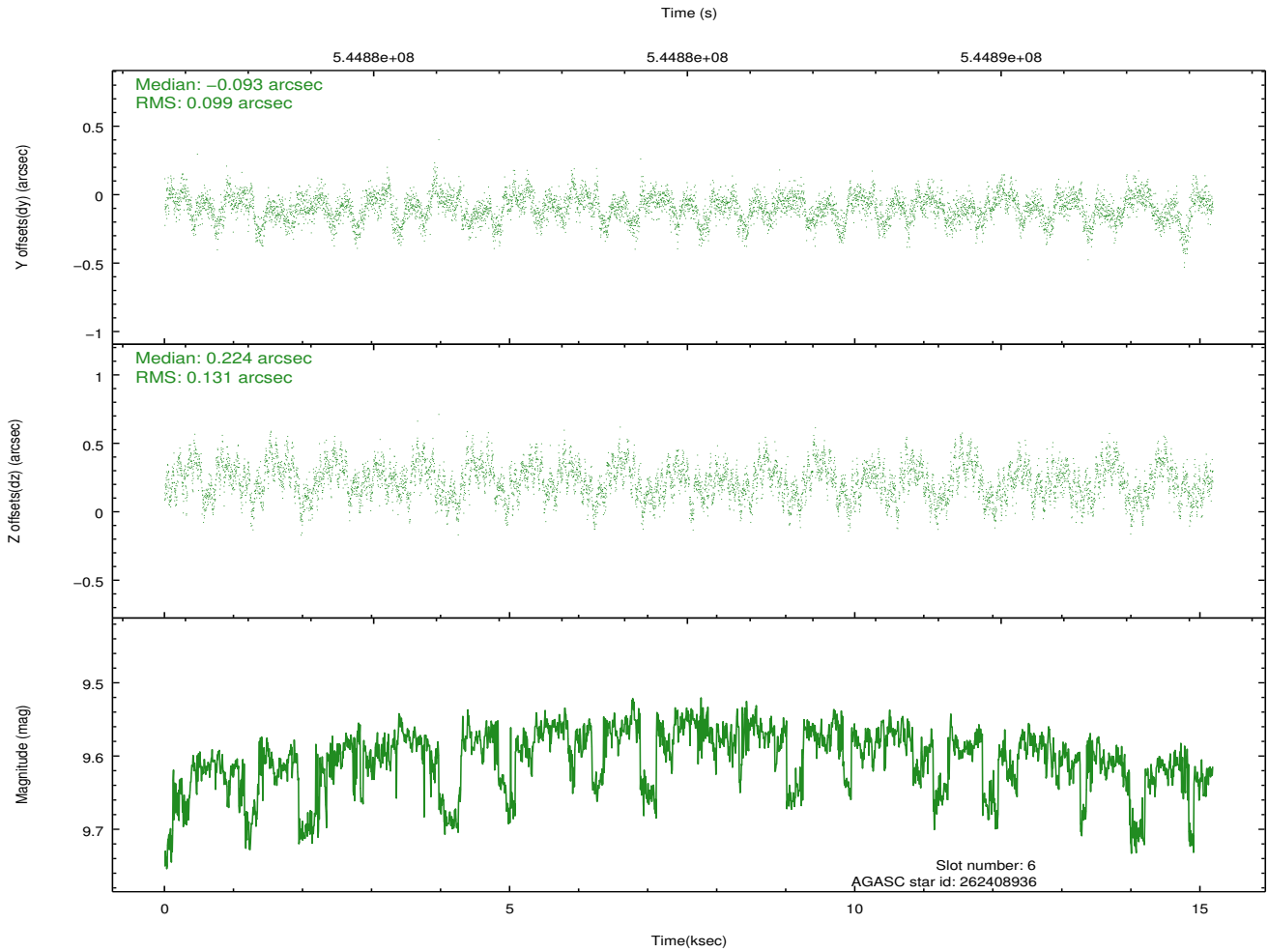
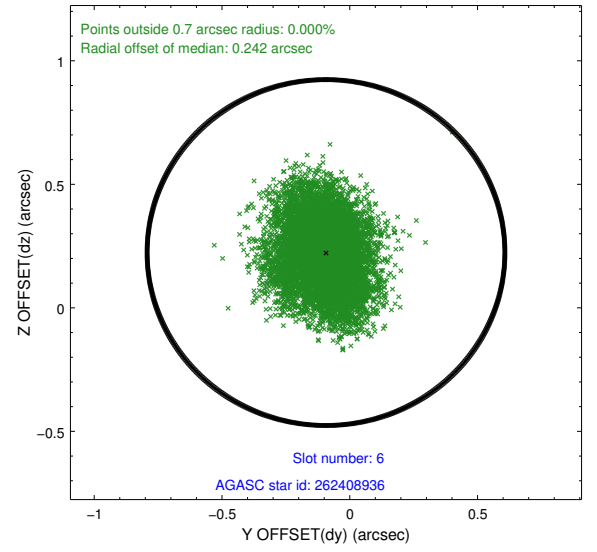
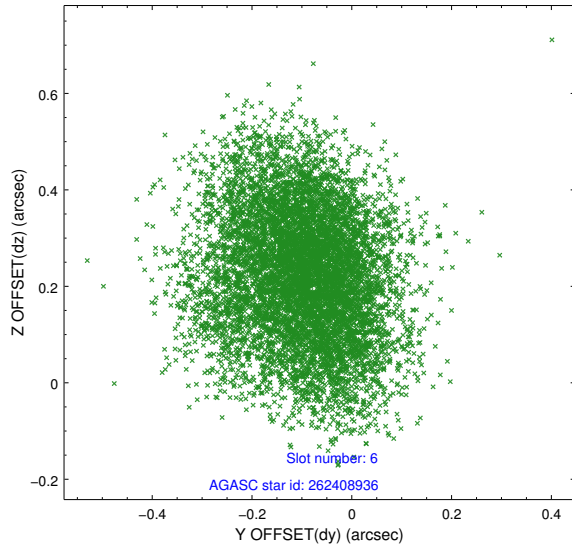
2.4.2 Slot 4



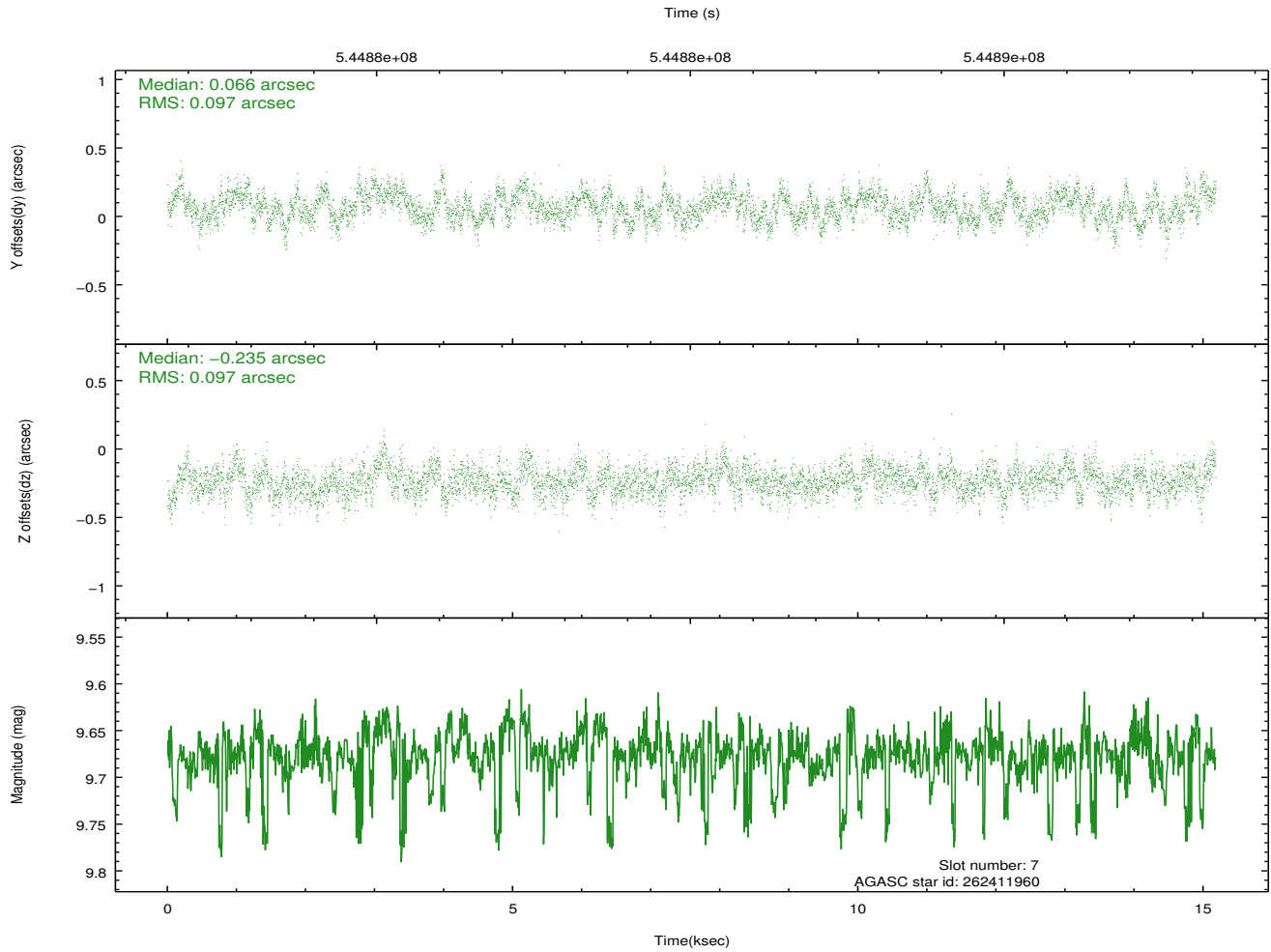
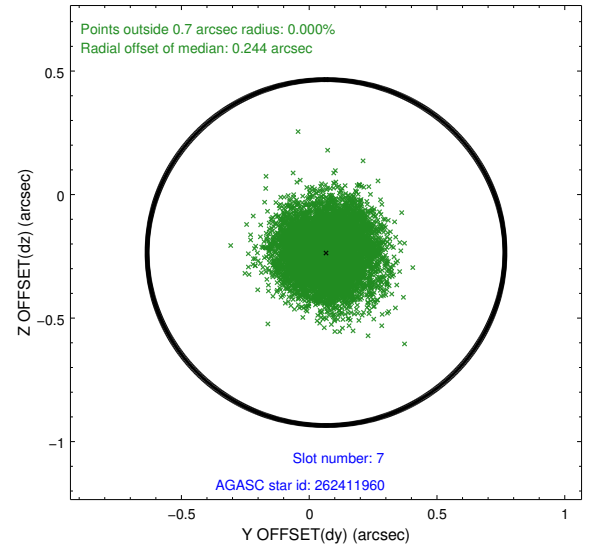
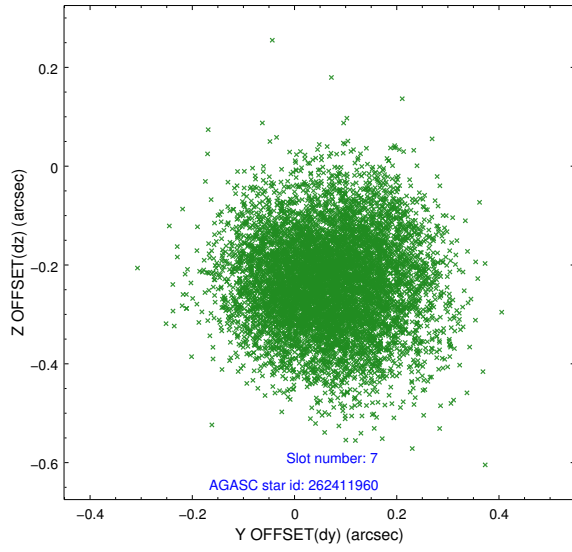
2.4.3 Slot 5



2.4.4 Slot 6

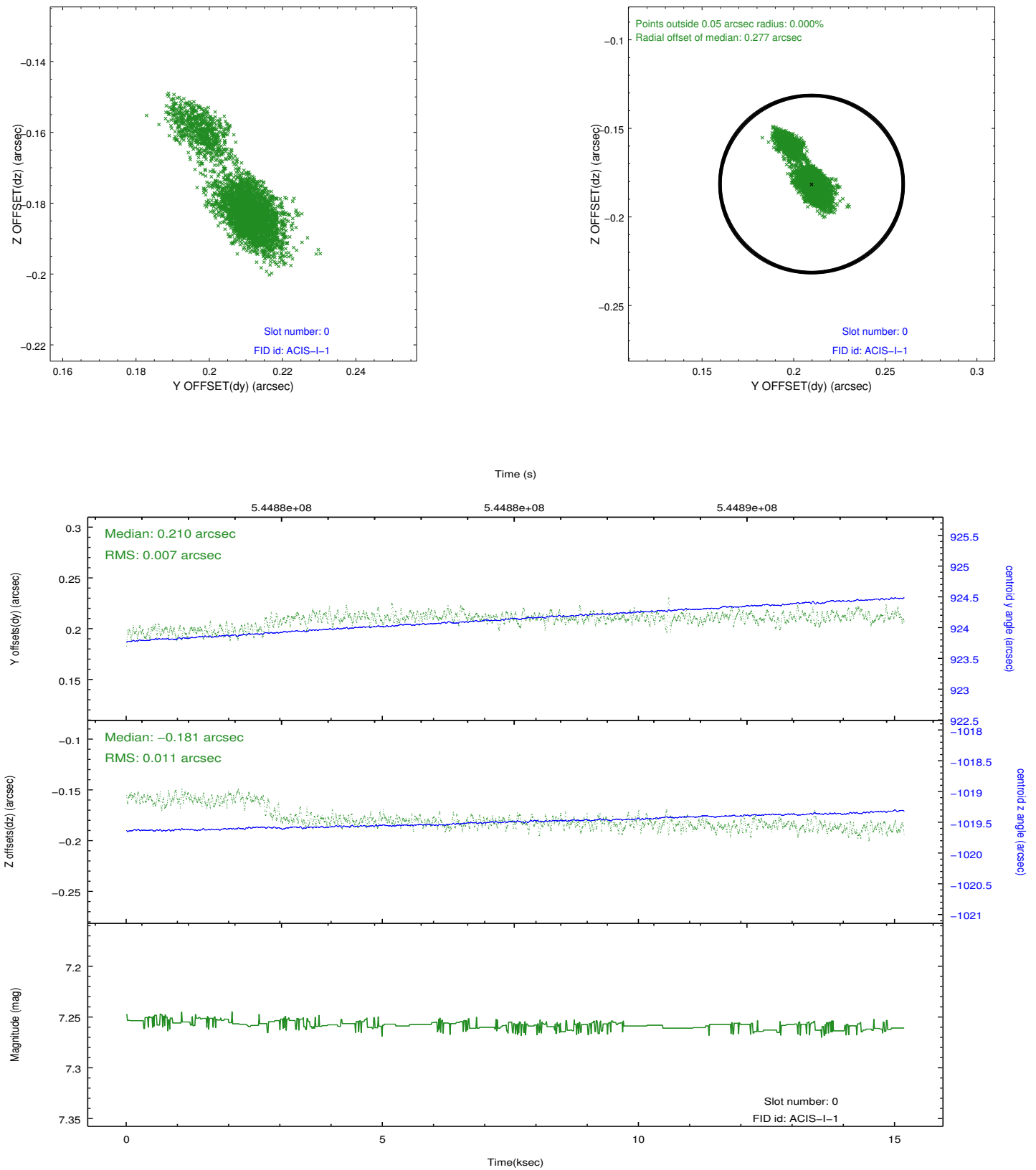


2.4.5 Slot 7

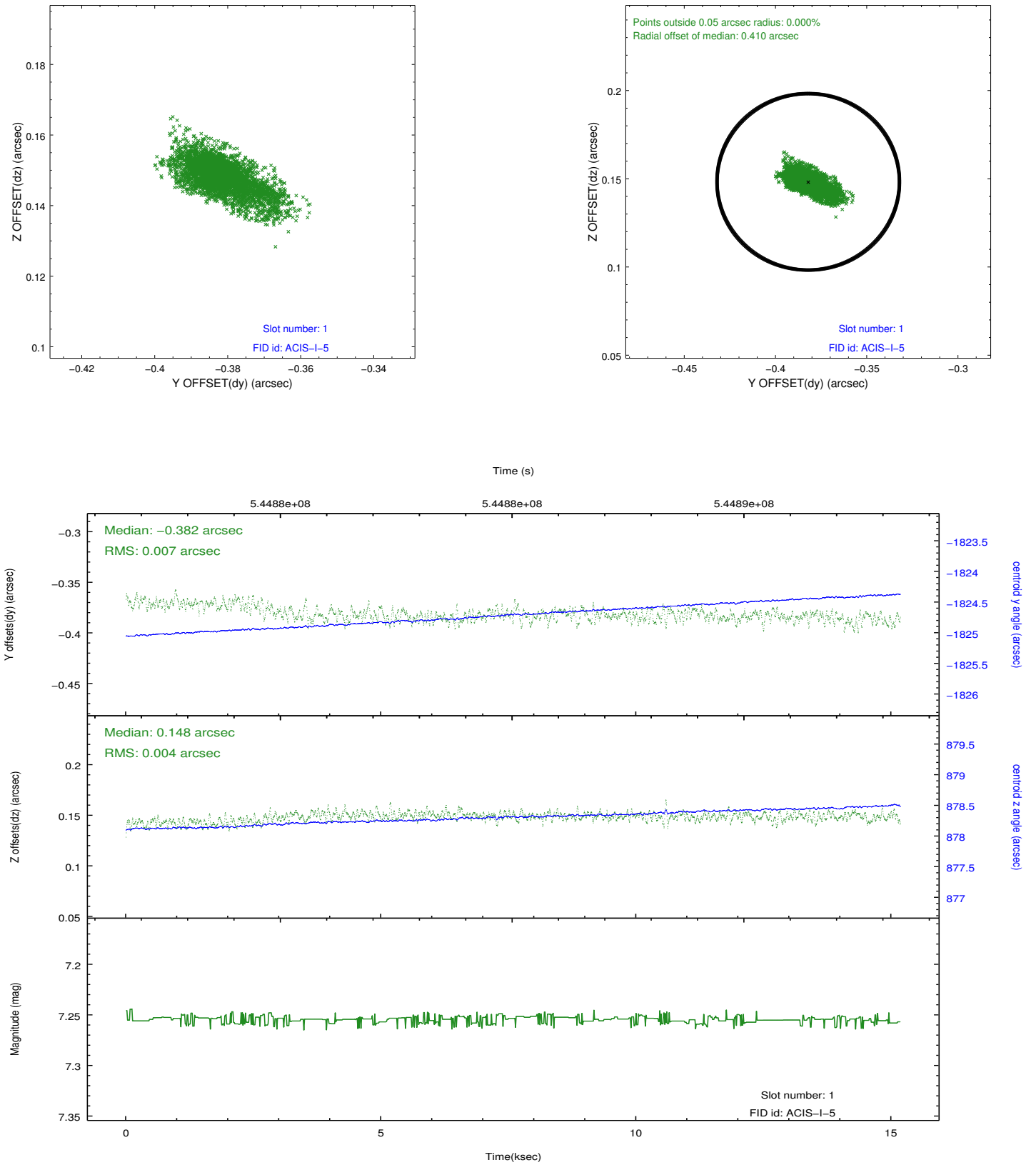


2.5 FID Slots

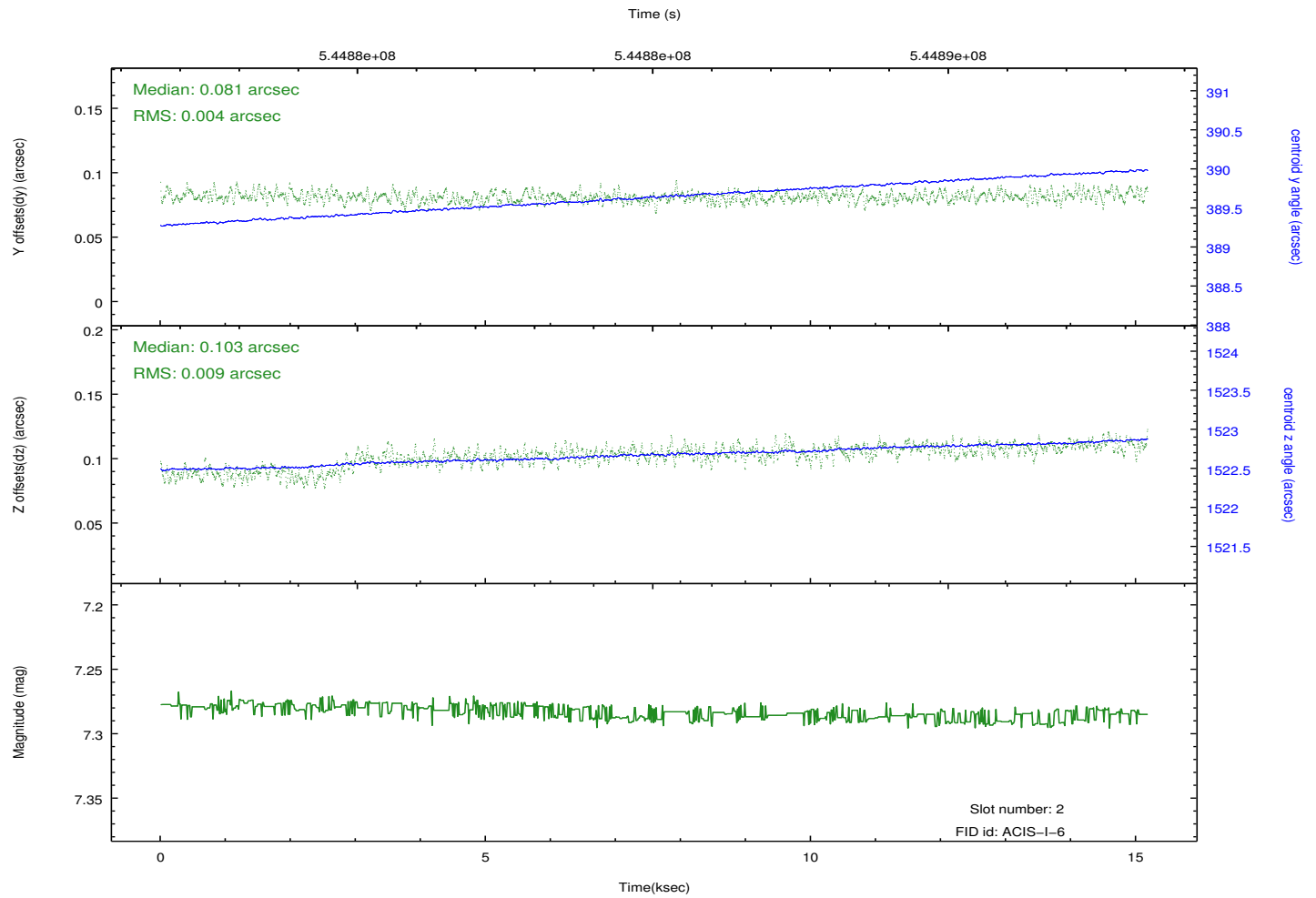
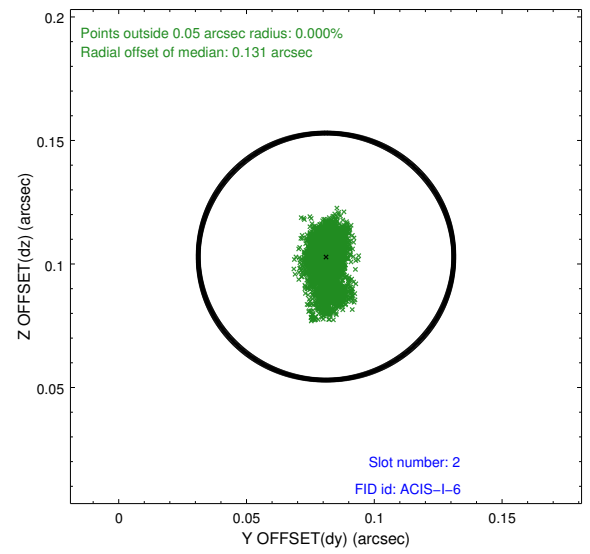
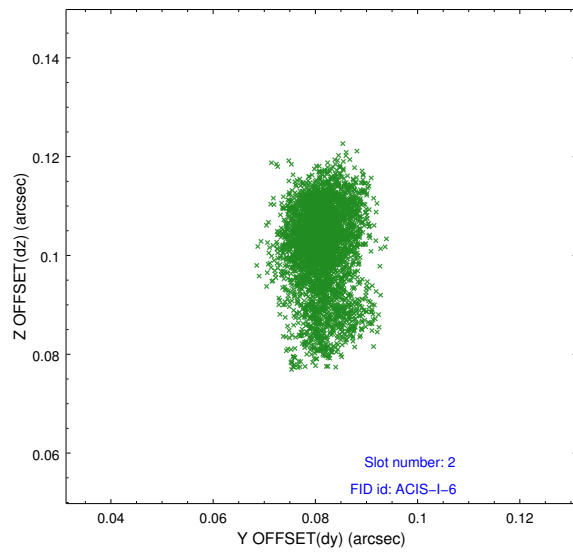
2.5.1 Slot 0



2.5.2 Slot 1



2.5.3 Slot 2



A Summary

A.1 Status

V&V Scientist	Jen Lauer
V&V Date (YYYY-MM-DD)	2015.04.10
V&V Edition	1
V&V Disposition and Status	OK
V&V Charge Time	14.777342386603

A.2 Comments

Window constraint met.