

V&V Reference Report

L2 ASCDS Version : 8.4.4

Observation 9422 - L2 Version 2
Chandra X-Ray Center

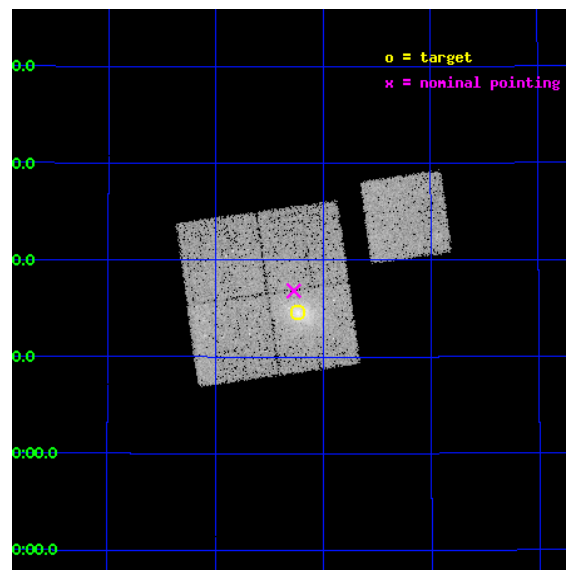
L2 Processing Date : May 31 2012

Contents

1	Front	2
2	OBI	3
2.1	OBI	3
2.1.1	Images	3
2.1.2	Bias	3
2.1.3	Parameters	4
2.1.4	Events	4
2.2	Compared Parameters	5
2.3	Aspect	6
2.4	Star Slots	9
2.4.1	Slot 3	9
2.4.2	Slot 4	10
2.4.3	Slot 5	11
2.4.4	Slot 6	12
2.4.5	Slot 7	13
2.5	FID Slots	14
2.5.1	Slot 0	14
2.5.2	Slot 1	15
2.5.3	Slot 2	16
A	Summary	17
A.1	Status	17
A.2	Comments	17

1 Front

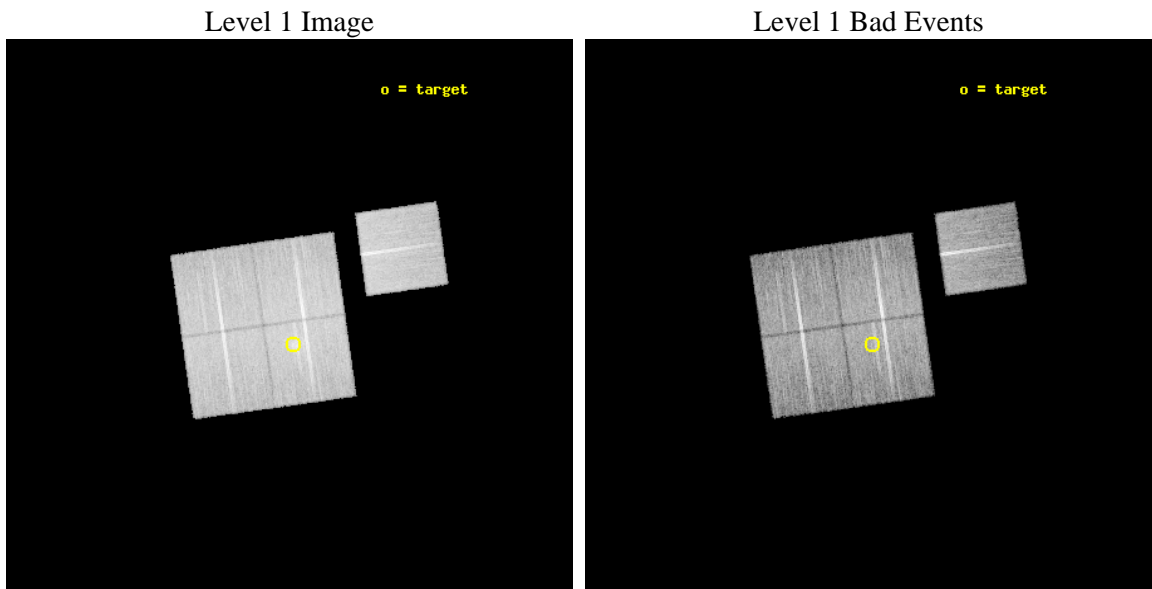
seq_num	800758	Sequence number
obs_id	9422	Observation id
title	LoCuSS: Cluster Mass Comparison with Chandra and HST -- Observational Discrepancy or Agreement in the New Millennium?	Proposal title
observer	Dr Graham Smith	Principal investigator
object	Abell 2187	Source name
dtcycle	0	
cycle	P	events from which exps? Prim/Second/Both
ra_targ	246.058667	Observer's specified target RA [deg]
dec_targ	41.243528	Observer's specified target Dec [deg]
ra_nom	246.06813293105	Nominal RA [deg]
dec_nom	41.280592680963	Nominal Dec [deg]
roll_nom	81.961421961864	Nominal Roll [deg]
revision	2	Processing version of data
ontime	18541.100142598	Sum of GTIs [s]
livetime	18298.847019476	Livetime [s]
ontime0	18541.100142598	Sum of GTIs [s]
ontime1	18541.100142598	Sum of GTIs [s]
ontime2	18541.100142598	Sum of GTIs [s]
ontime3	18541.100142598	Sum of GTIs [s]
ontime6	18537.959162295	Sum of GTIs [s]
l2events	76131	Number of level 2 events



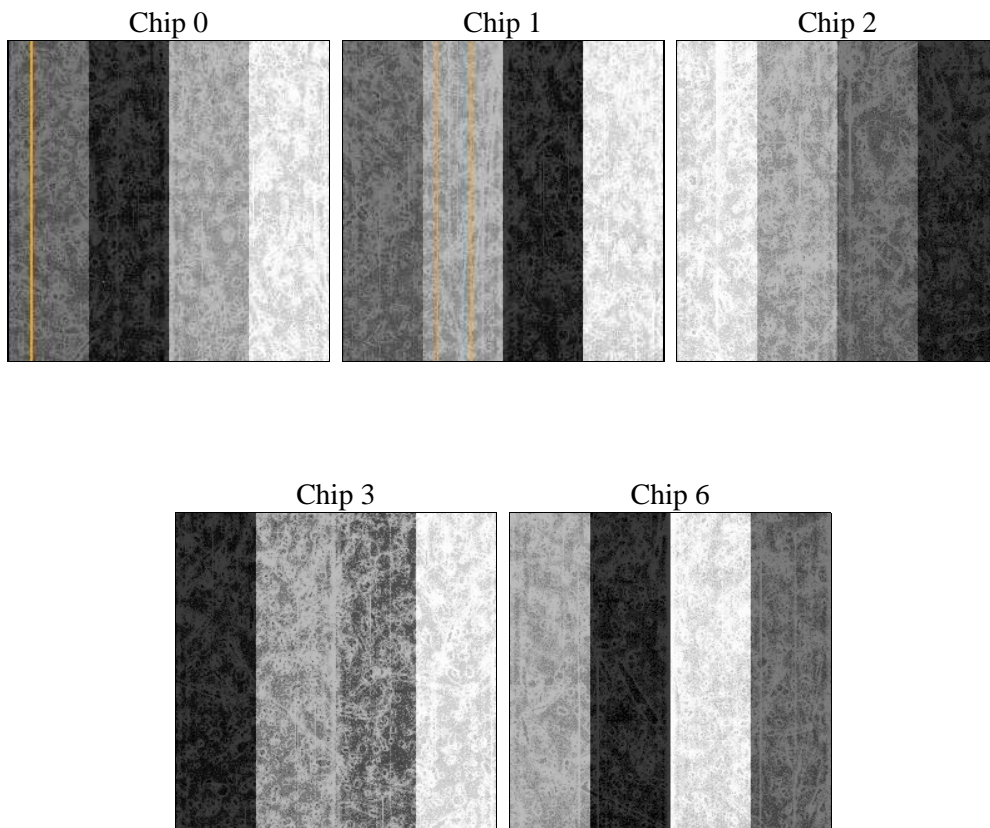
2 OBI

2.1 OBI

2.1.1 Images



2.1.2 Bias



2.1.3 Parameters

obi_num	1	Obi number	sched_exp_time	18500.000000	[s] Scheduled observation exposure time
ascdsver	8.4.4	Processing system revision	ontime	18541.100142598	Sum of GTIs [s]
caldsver	4.4.9	 	ontime0	18541.100142598	Sum of GTIs [s]
date	2012-05-31T14:48:46	Date and time of file creation	ontime1	18541.100142598	Sum of GTIs [s]
revision	2	Processing version of data	ontime2	18541.100142598	Sum of GTIs [s]
			ontime3	18541.100142598	Sum of GTIs [s]
			ontime6	18537.959162295	Sum of GTIs [s]
			l1events	779578	Number of level 1 events

2.1.4 Events

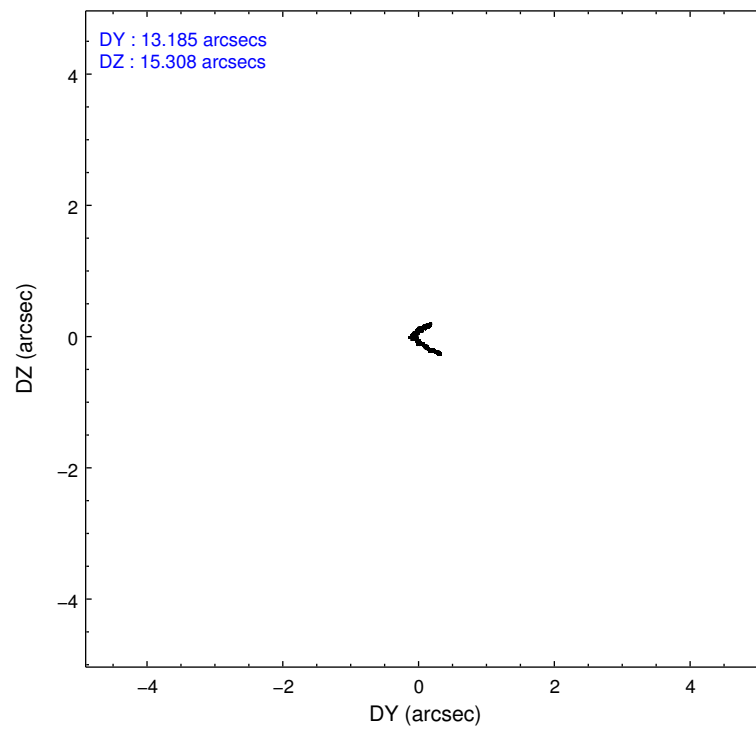
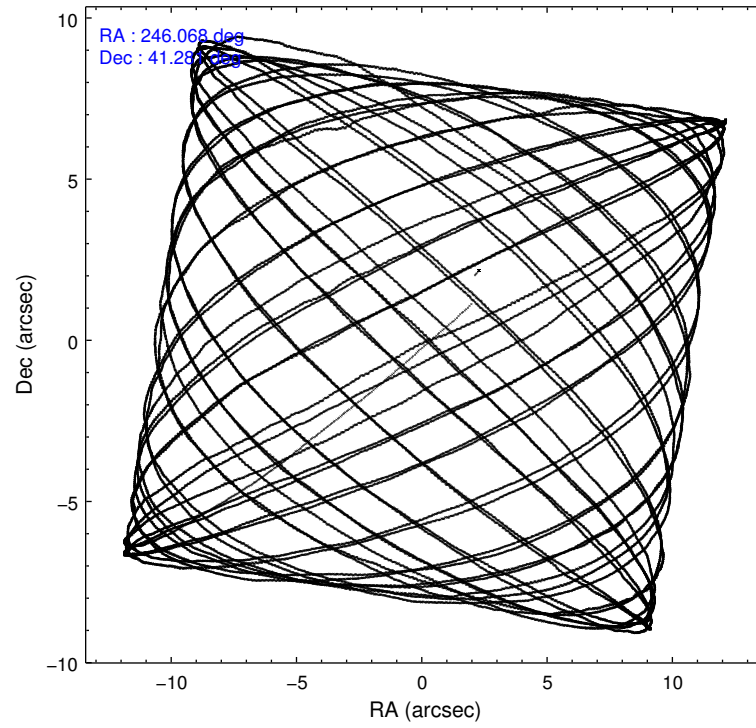
	ccd 0	ccd 1	ccd 2	ccd 3	ccd 6
level 1 events	146440	146561	163203	165241	158133
rejected events	130257	128309	147424	141737	141569
rejected %	88%	87%	90%	85%	89%

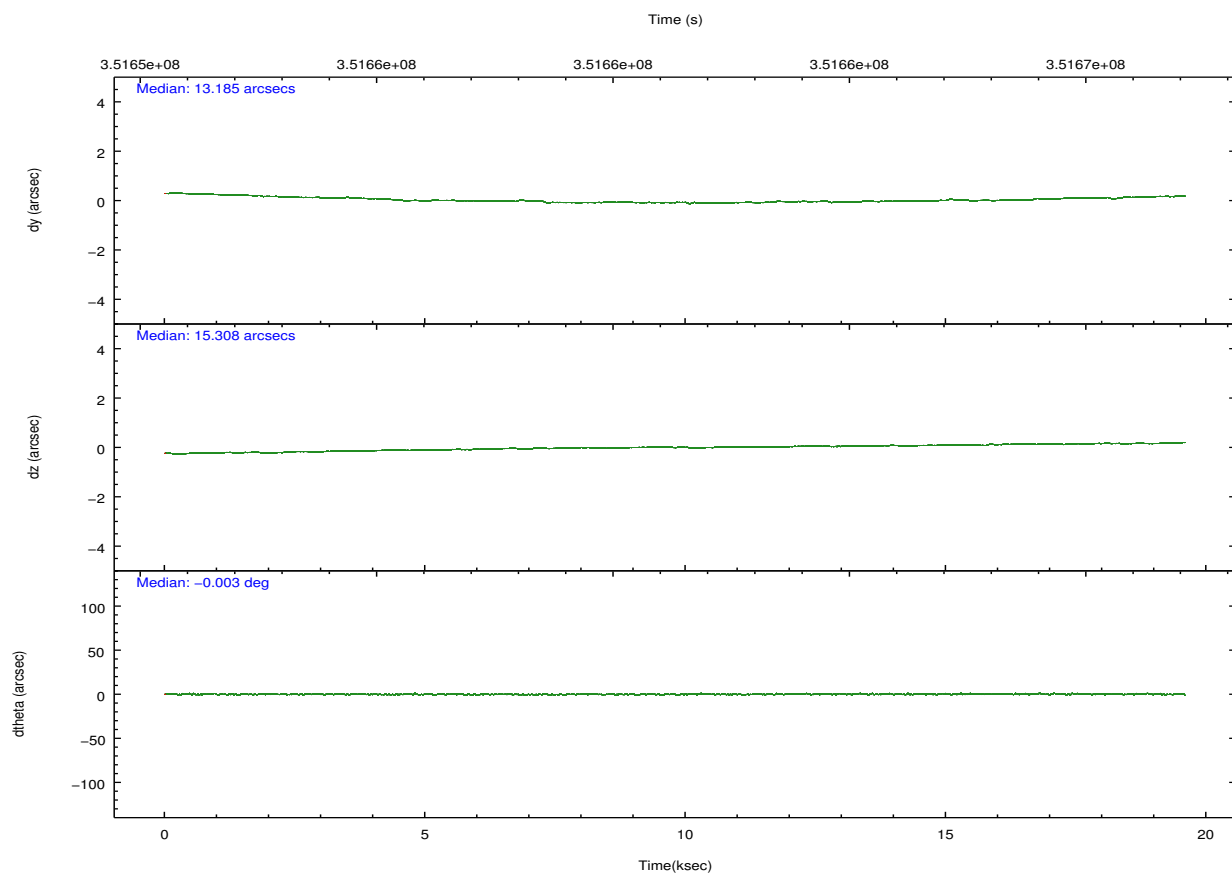
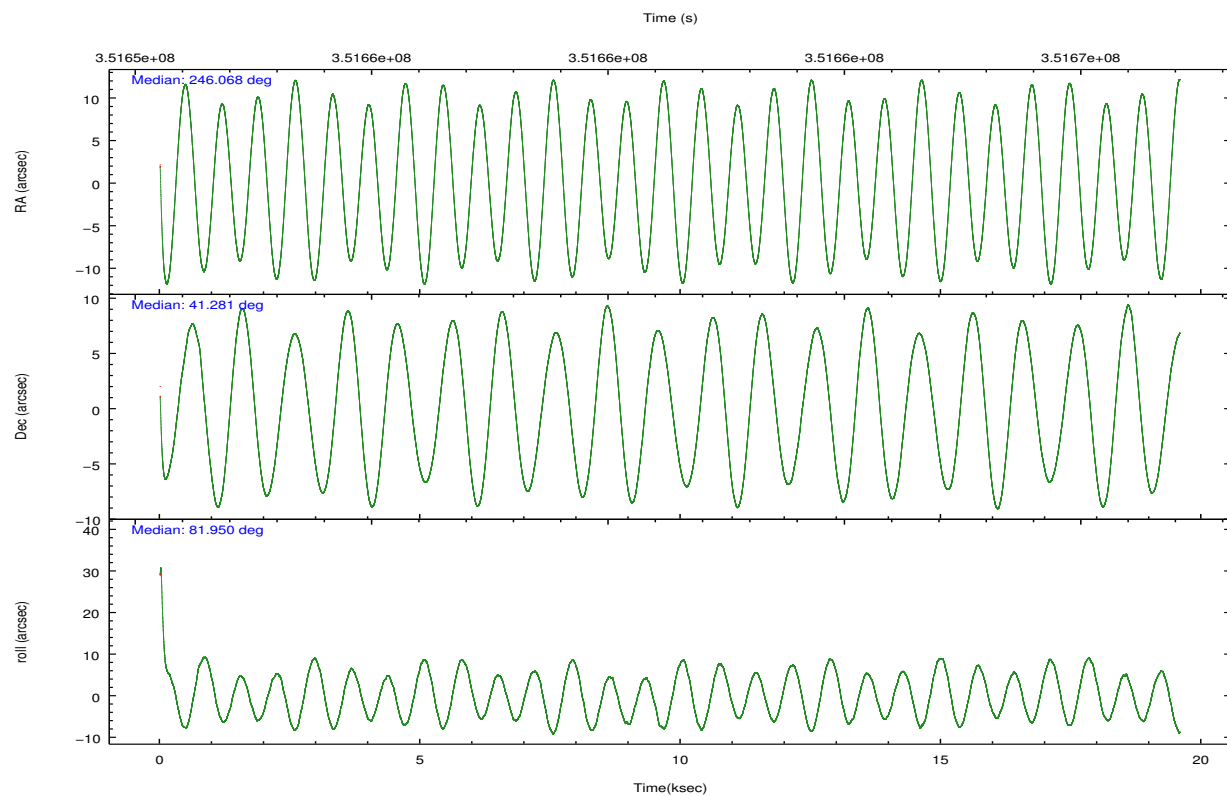
	ccd 0	ccd 1	ccd 2	ccd 3	ccd 6
grade 0 events	5670	6593	5702	12211	5847
	3%	4%	3%	7%	3%
grade 1 events	65	79	82	142	90
	0%	0%	0%	0%	0%
grade 2 events	3929	4315	3733	4130	3638
	2%	2%	2%	2%	2%
grade 3 events	1753	1903	1686	1928	1801
	1%	1%	1%	1%	1%
grade 4 events	1648	1843	1710	1950	1780
	1%	1%	1%	1%	1%
grade 5 events	5645	6211	5400	6482	6243
	3%	4%	3%	3%	3%
grade 6 events	3191	3605	2953	3296	3506
	2%	2%	1%	1%	2%
grade 7 events	124539	122012	141937	135102	135228
	85%	83%	86%	81%	85%

2.2 Compared Parameters

Parameter	Planned	Actual	Parameter	Planned	Actual
Instrument	ACIS	ACIS	Obspar format version number	7	7
Detector	ACIS-01236	ACIS-01236	Obspar file type	PREDICTED	ACTUAL
Grating	NONE	NONE	Obspar update status	NONE	UPDATED
Data mode	VFAINT	VFAINT	Number of optional ACIS chips dropped	0	0
Observation mode	POINTING	POINTING	On-chip summing requested	N	N
[deg] Pointing RA	246.081965	246.0681329310491	Subarray requested	NONE	NONE
[deg] Pointing Dec	41.255128	41.28059268096299	Alternating exposures requested	N	N
[deg] Pointing Roll	81.743593	81.961421961864	[s] Primary exposure time	0.000000	3.1
[mm] SIM focus pos	-0.782348	-0.7809083437167272			
[mm] SIM defocus	0	0.001439871863259334			
[mm] SIM translation stage pos	-227.592463	-227.5933067819097			
[mm] SIM translation stage offset	-6	-5.999146221020027			
[s] Observation start time (MET)	351652620.184000	351650725.63286			
Observation start date	2009-02-22T01:15:54	2009-02-22T00:45:25			
[s] Observation end time (MET)	351671120.184000	351671862.1589			
Observation end date	2009-02-22T06:24:14	2009-02-22T06:37:42			
Read mode	TIMED	TIMED			

2.3 Aspect



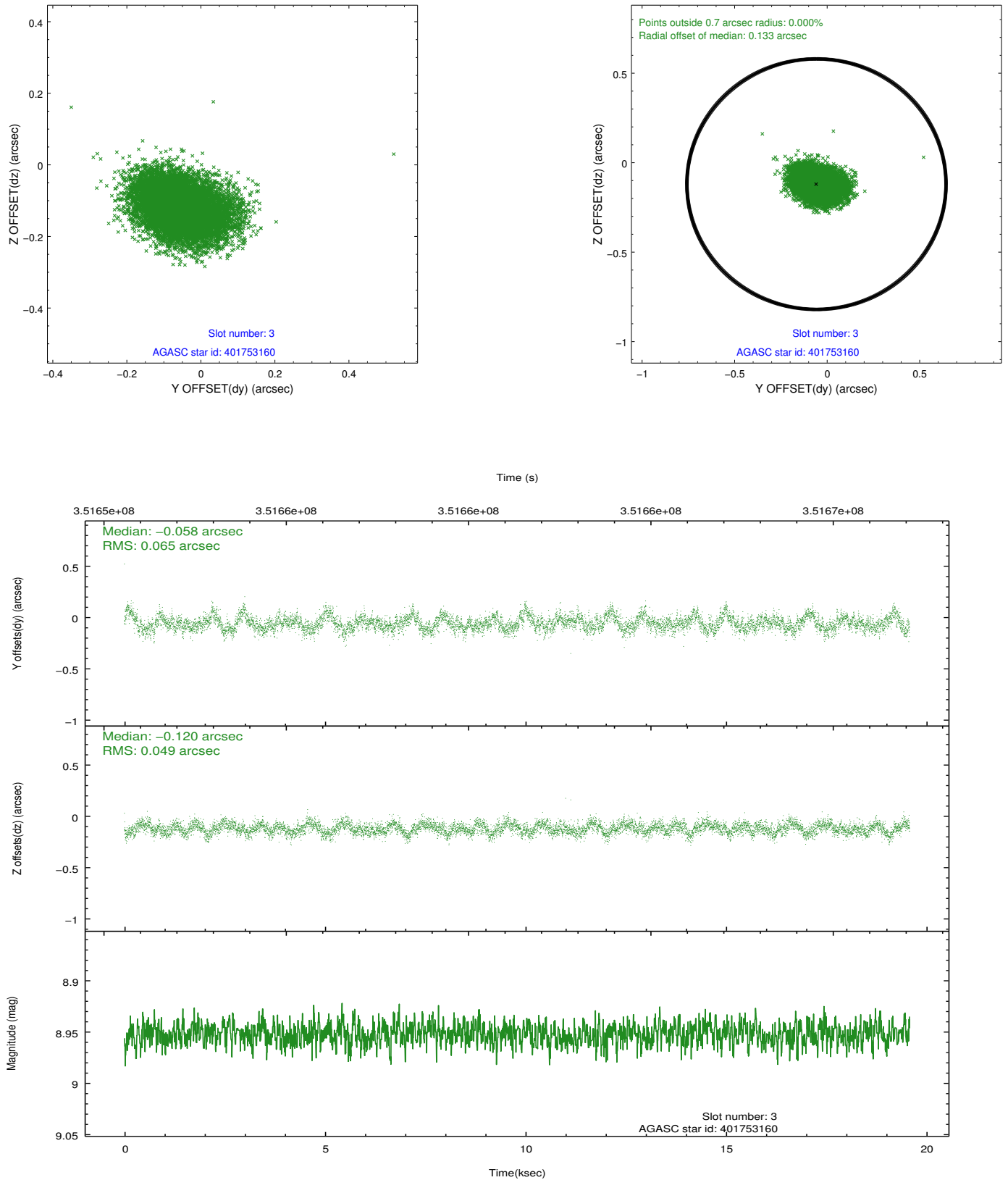


Slot Statistics

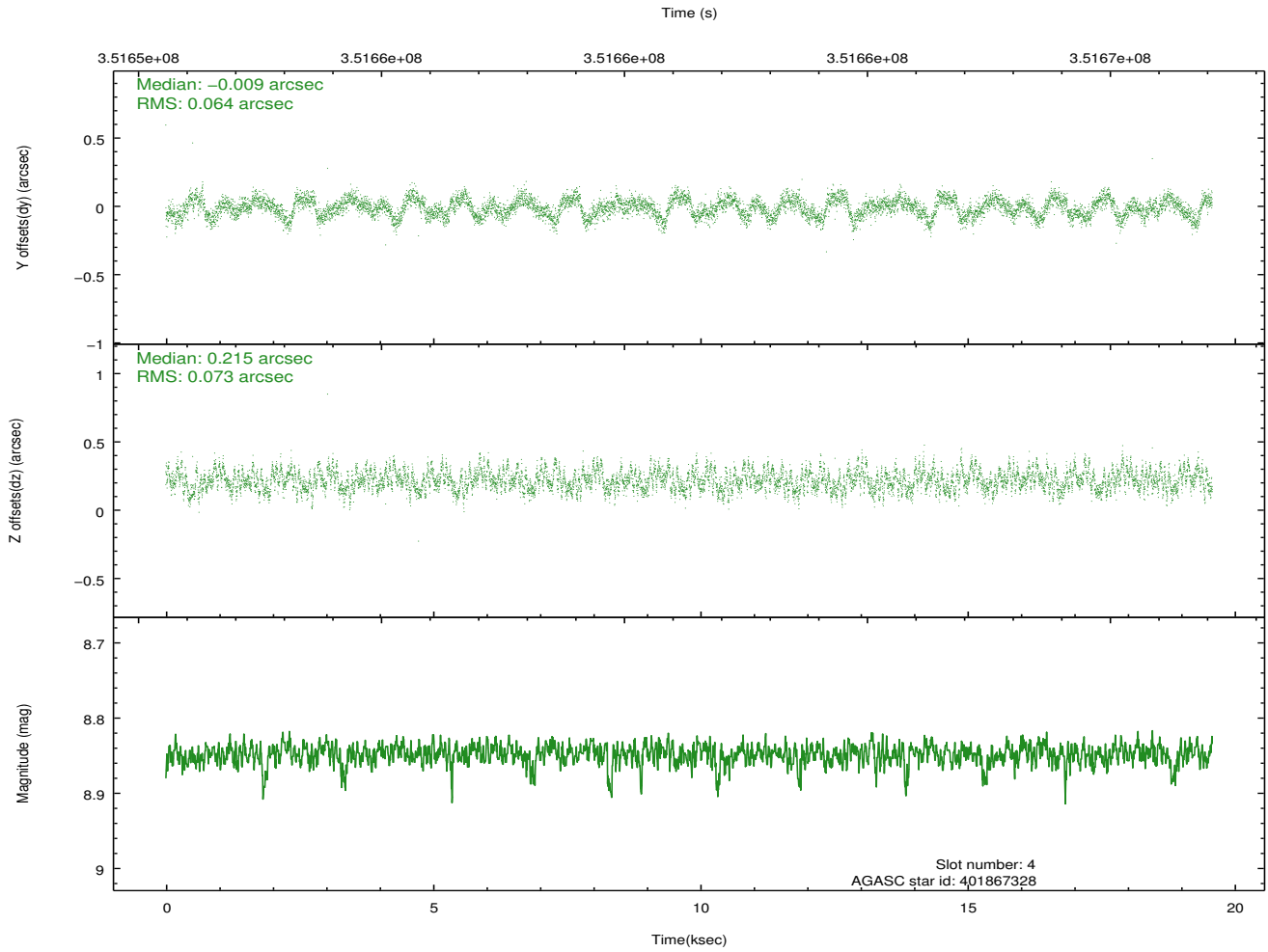
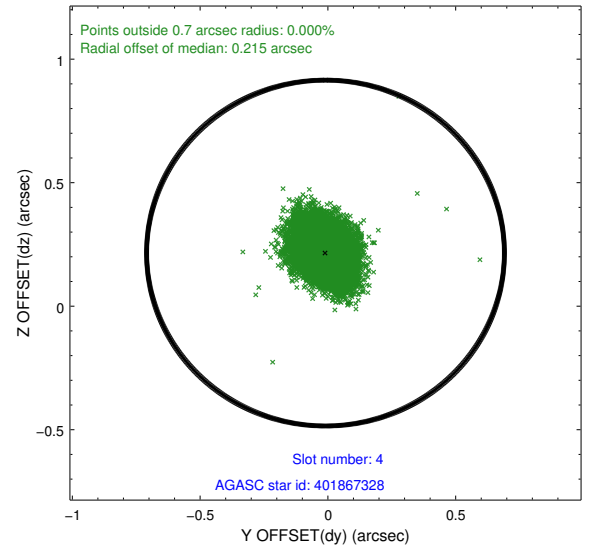
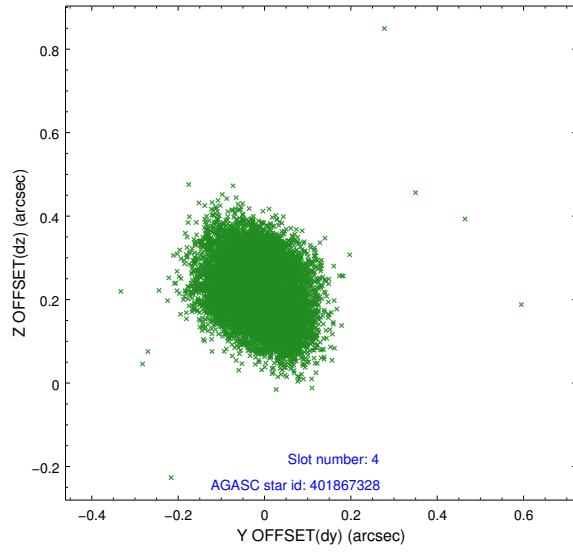
slot	status	id	mag	n_pts	med_dy	med_dz	dr1	dr2	ra	dec	mean_y	mean_z
0	FID	ACIS-I-1	7.00	4777	0.072	-0.022	0.007	0.013	0.000000	0.000000	926.27	-962.04
1	FID	ACIS-I-5	6.99	4777	-0.248	0.068	0.008	0.014	0.000000	0.000000	-1822.09	935.36
2	FID	ACIS-I-6	7.01	4776	0.085	0.024	0.008	0.013	0.000000	0.000000	391.56	1580.09
3	GUIDE	401753160	8.95	9544	-0.058	-0.120	0.085	0.142	245.980134	41.873095	2162.47	590.23
4	GUIDE	401867328	8.85	9548	-0.009	0.215	0.104	0.162	246.814013	41.248497	270.16	-1962.43
5	GUIDE	401746064	8.50	9546	0.188	-0.211	0.077	0.126	245.219743	40.961445	-1370.48	2169.22
6	GUIDE	401754120	8.00	9549	-0.045	-0.124	0.070	0.115	245.263801	40.991091	-1250.04	2065.15
7	GUIDE	401867472	9.12	9536	-0.078	0.243	0.100	0.160	247.029146	41.459280	1108.82	-2420.34

2.4 Star Slots

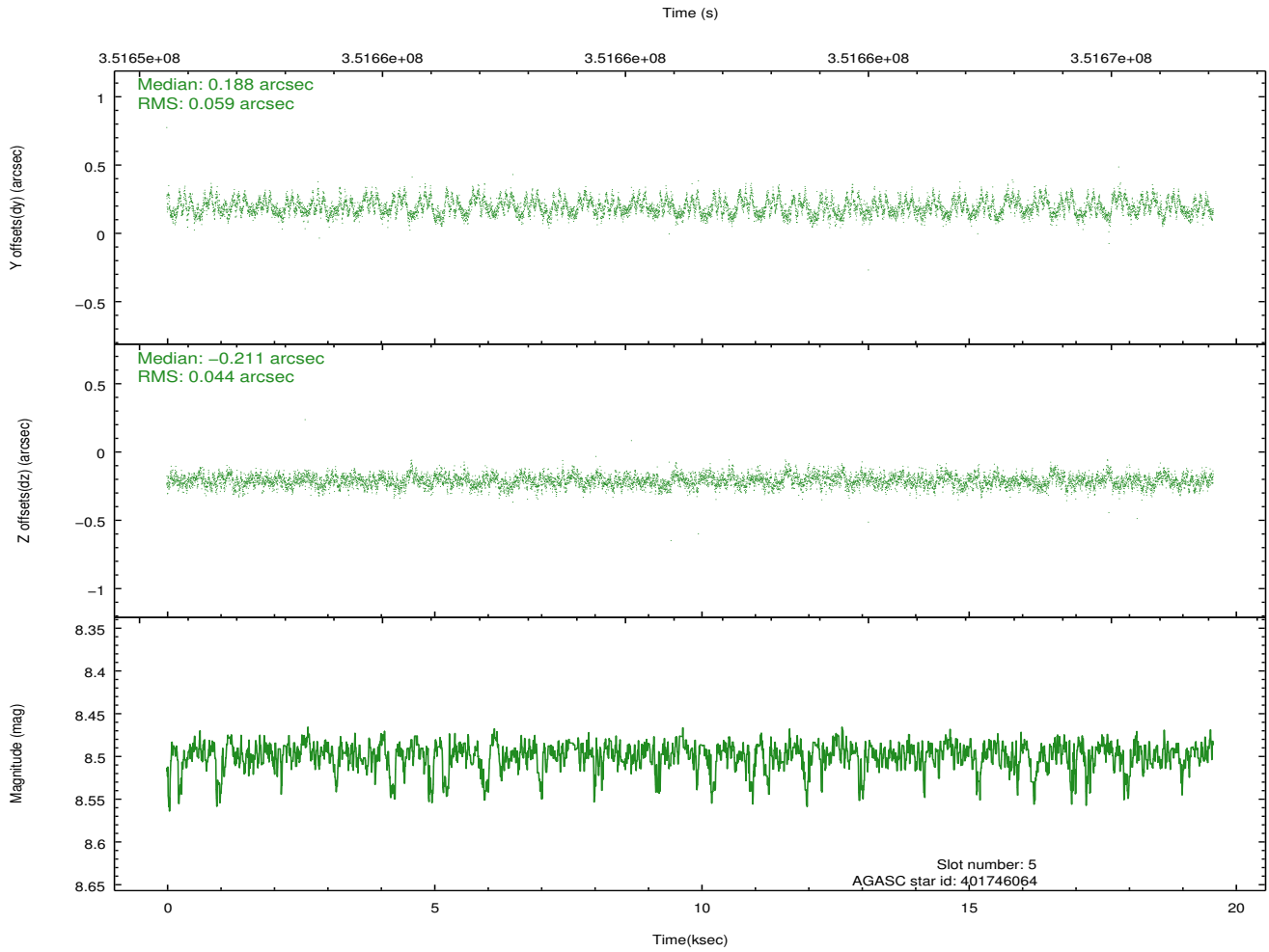
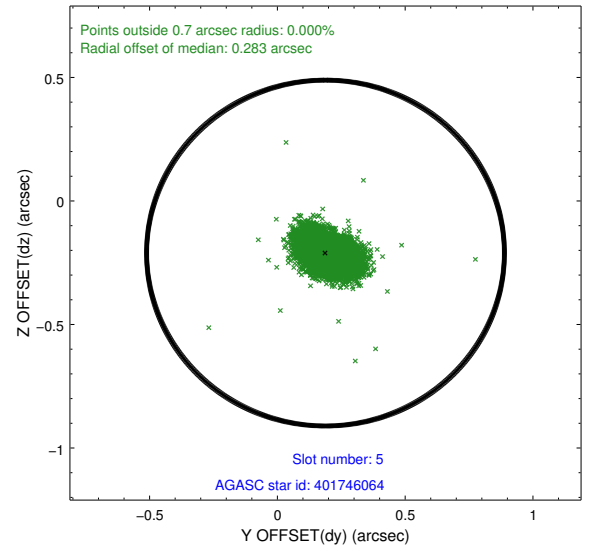
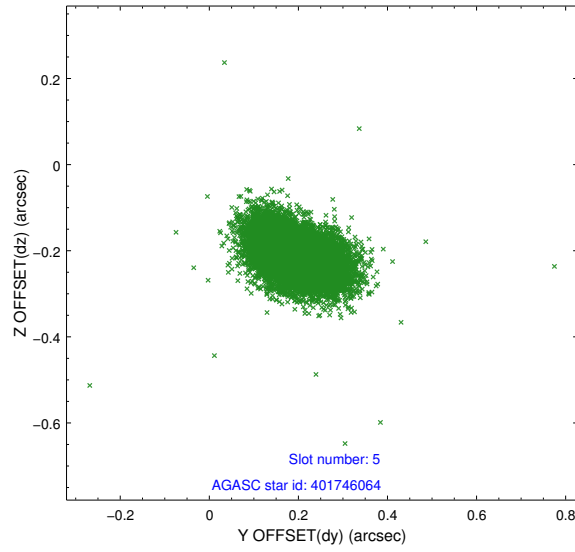
2.4.1 Slot 3



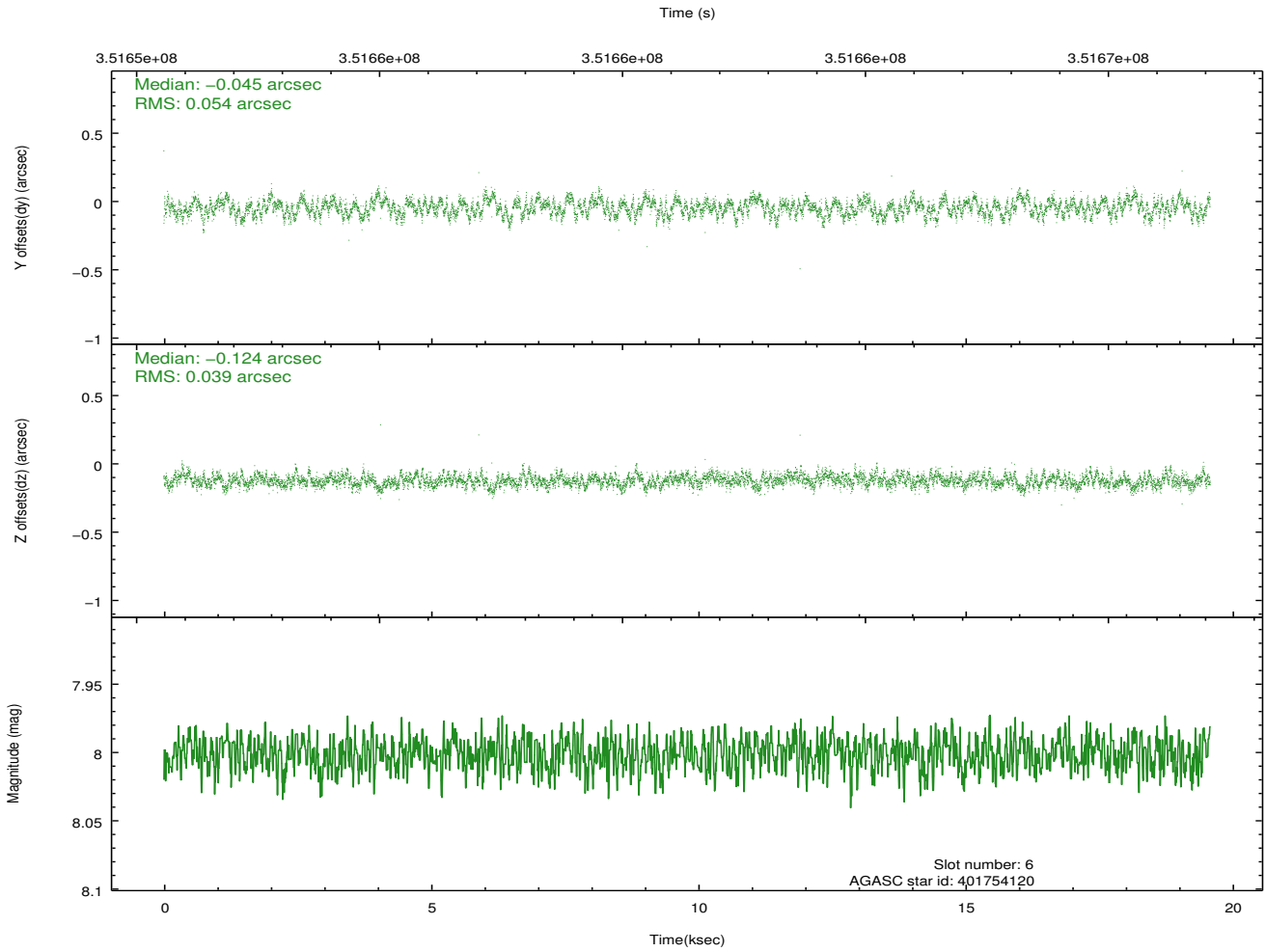
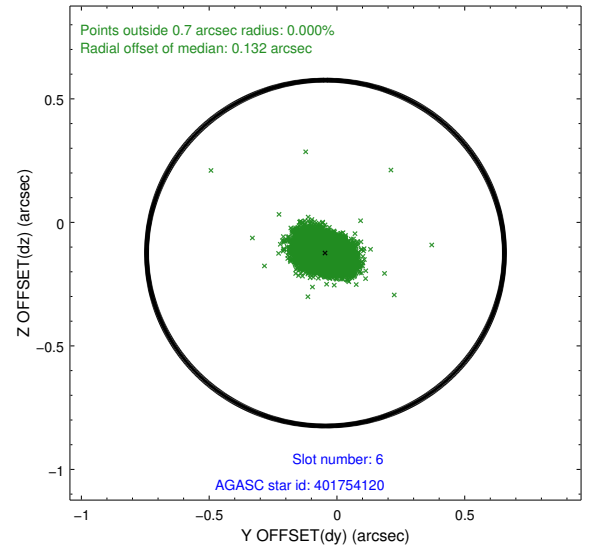
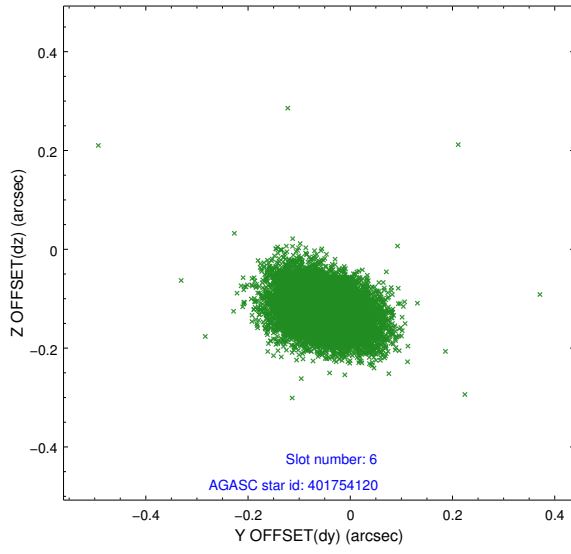
2.4.2 Slot 4



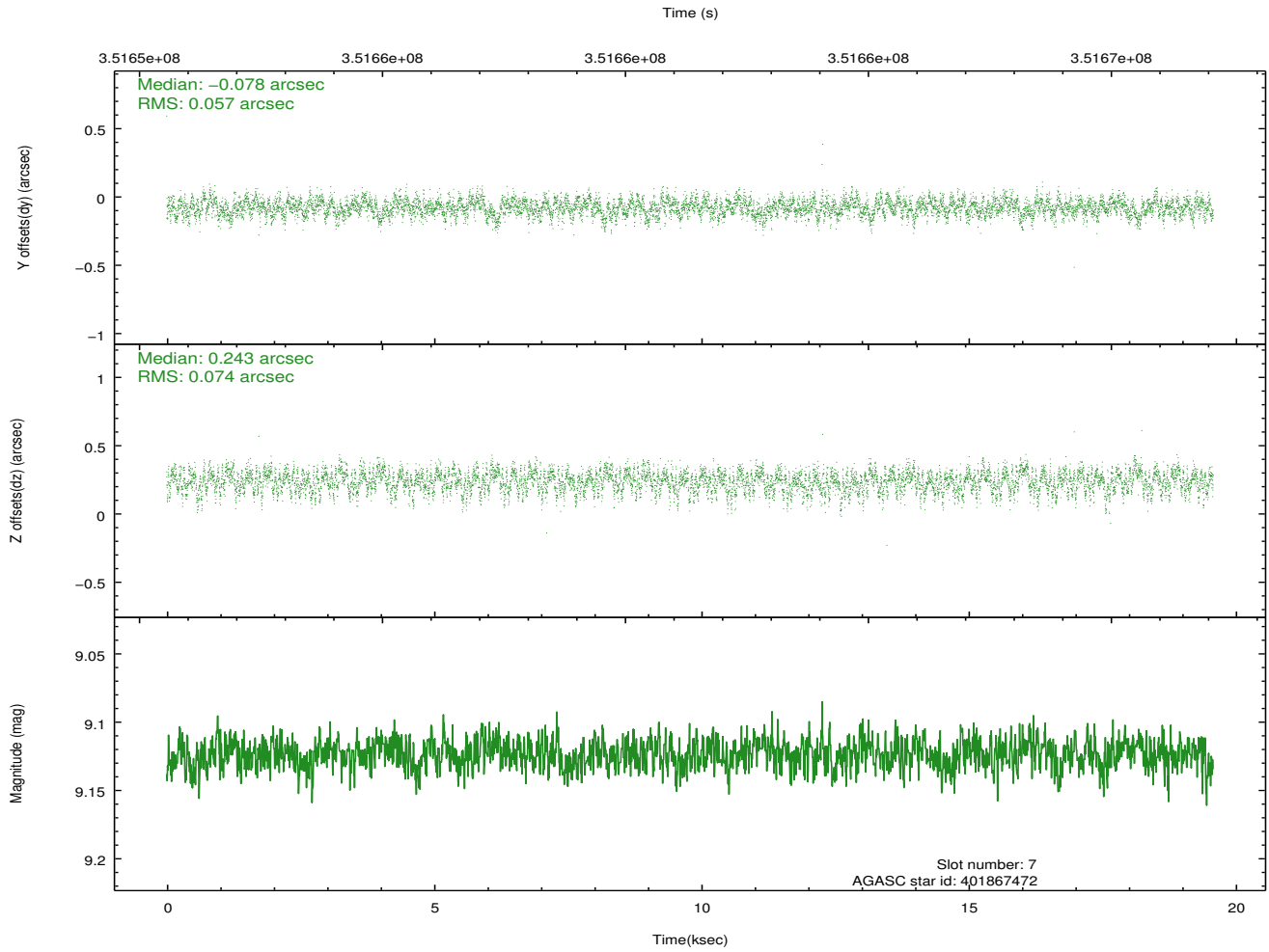
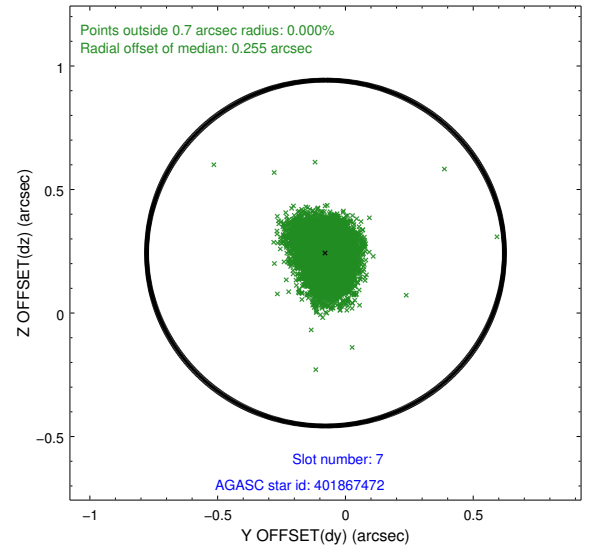
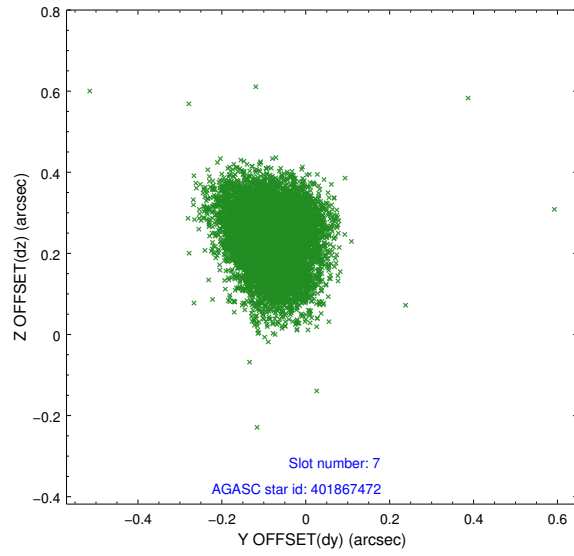
2.4.3 Slot 5



2.4.4 Slot 6

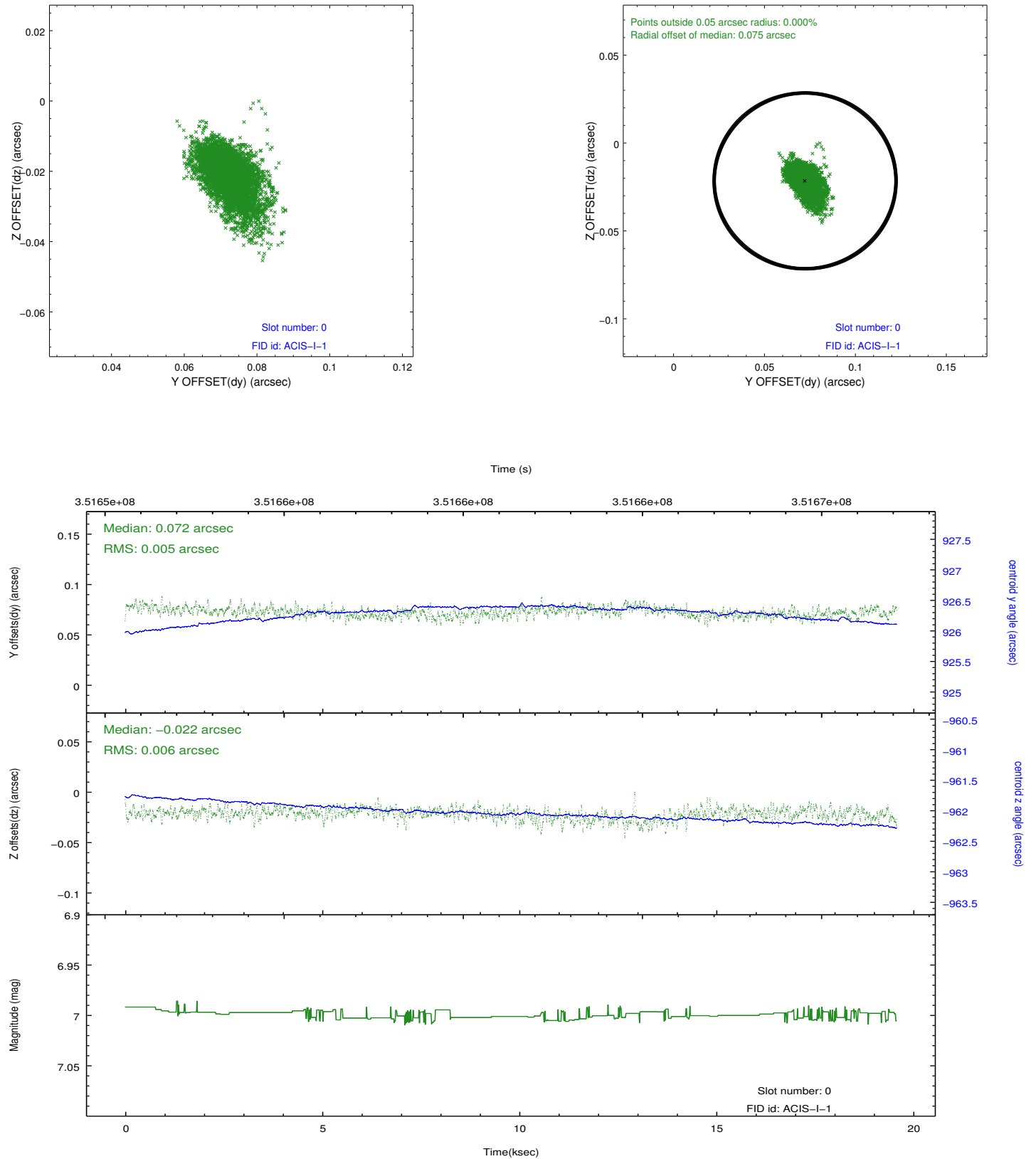


2.4.5 Slot 7

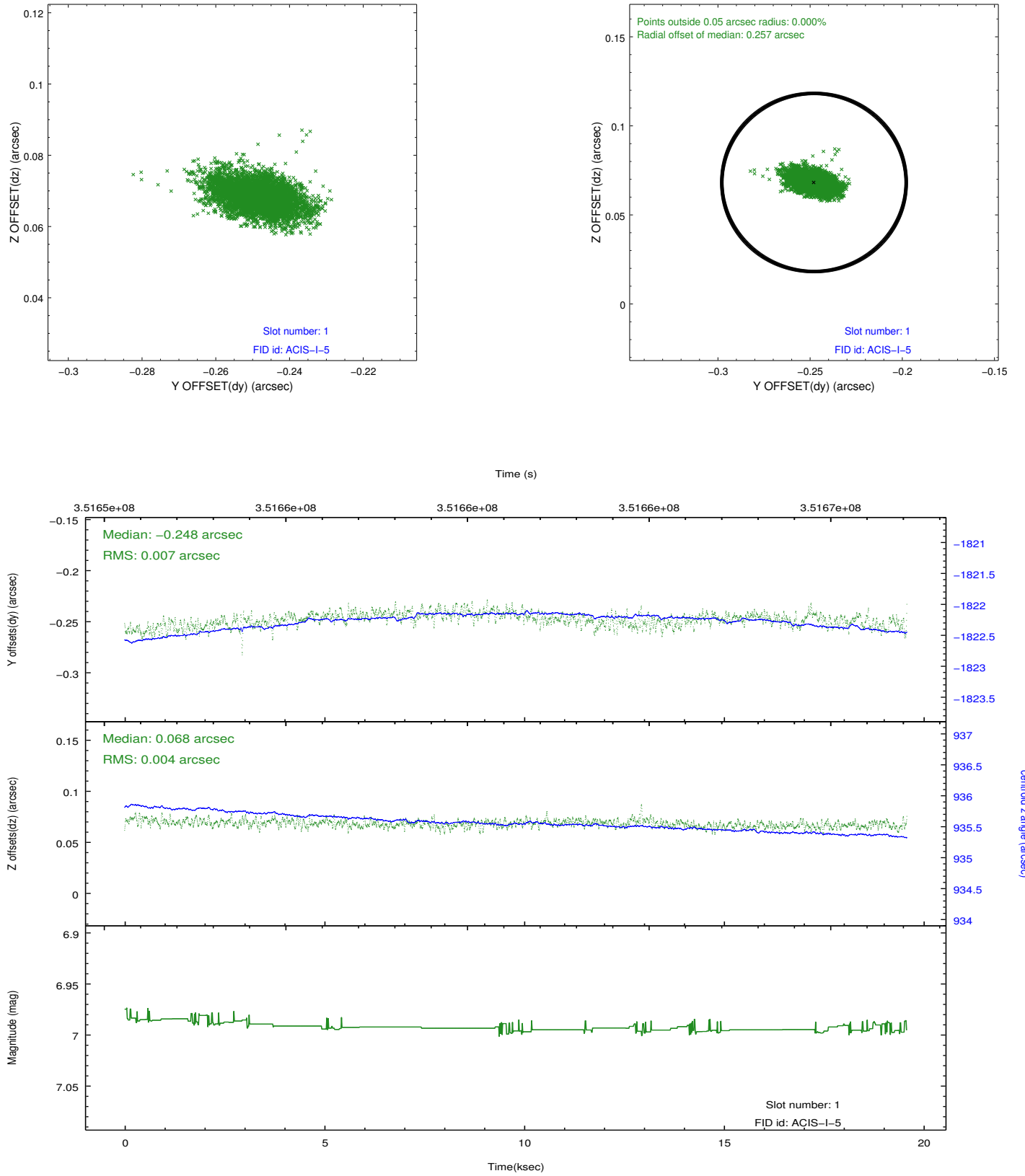


2.5 FID Slots

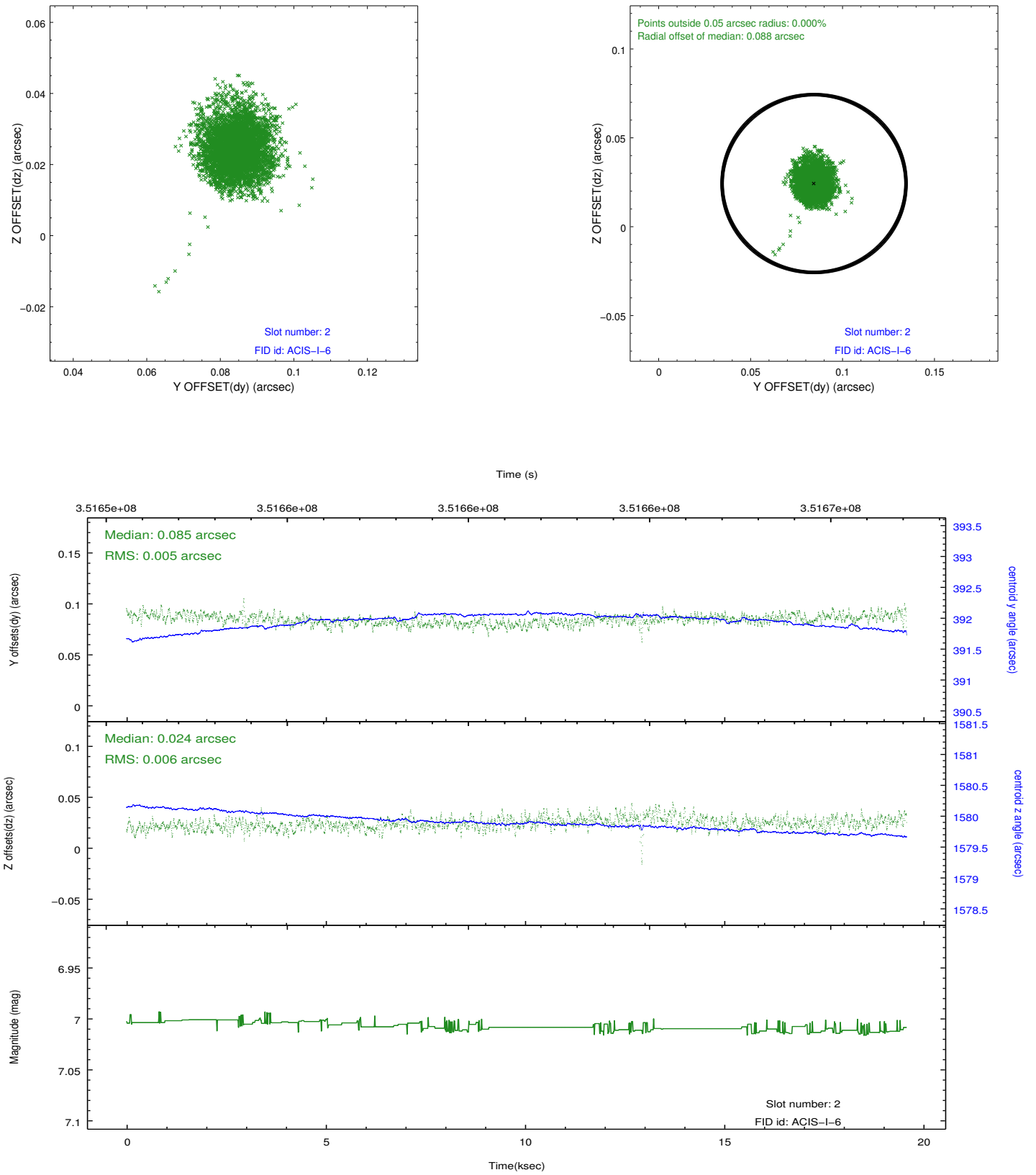
2.5.1 Slot 0



2.5.2 Slot 1



2.5.3 Slot 2



A Summary

A.1 Status

V&V Scientist	Joy Nichols
V&V Date (YYYY-MM-DD)	2012.06.06
V&V Edition	1
V&V Disposition and Status	OK
V&V Charge Time	18.5442001

A.2 Comments