

V&V Reference Report

L2 ASCDS Version : 8.4.5

Observation 932 - L2 Version 4
Chandra X-Ray Center

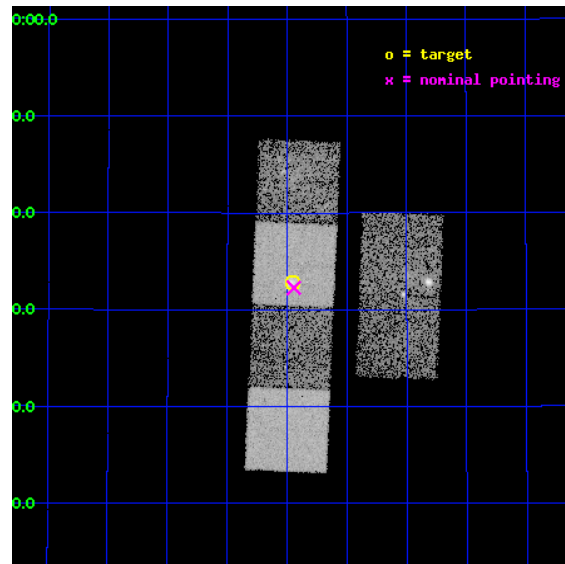
L2 Processing Date : Aug 30 2012

Contents

1	Front	2
2	OBI	3
2.1	OBI	3
2.1.1	Images	3
2.1.2	Bias	3
2.1.3	Parameters	4
2.1.4	Events	4
2.2	Compared Parameters	5
2.3	Aspect	6
2.4	Star Slots	9
2.4.1	Slot 3	9
2.4.2	Slot 4	10
2.4.3	Slot 5	11
2.4.4	Slot 6	12
2.4.5	Slot 7	13
2.5	FID Slots	14
2.5.1	Slot 0	14
2.5.2	Slot 1	15
2.5.3	Slot 2	16
A	Summary	17
A.1	Status	17
A.2	Comments	17

1 Front

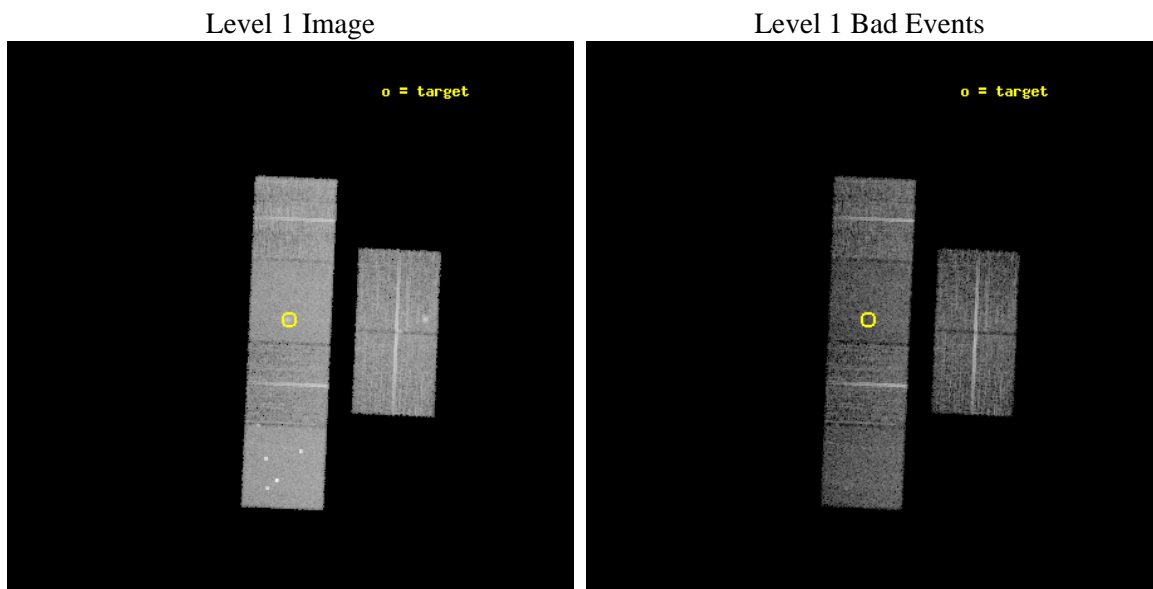
seq_num	900004	Sequence number
obs_id	932	Observation id
title	BRIGHT `BLANK FIELD` X-RAY SOURCES	Proposal title
observer	Dr. Martin Elvis	Principal investigator
object	1WGA1226.9+3332	Source name
dtcycle	0	
cycle	P	events from which exps? Prim/Second/Both
ra_targ	186.7375	Observer's specified target RA [deg]
dec_targ	33.547528	Observer's specified target Dec [deg]
ra_nom	186.73587676791	Nominal RA [deg]
dec_nom	33.537704620209	Nominal Dec [deg]
roll_nom	272.44966869861	Nominal Roll [deg]
revision	4	Processing version of data
ontime	9955.2000092566	Sum of GTIs [s]
livetime	9829.1412724376	Livetime [s]
ontime2	9951.9590490162	Sum of GTIs [s]
ontime3	9951.9590590298	Sum of GTIs [s]
ontime5	9955.2000092566	Sum of GTIs [s]
ontime6	9955.2000092566	Sum of GTIs [s]
ontime7	9955.2000092566	Sum of GTIs [s]
ontime8	9955.2000092566	Sum of GTIs [s]
l2events	88182	Number of level 2 events



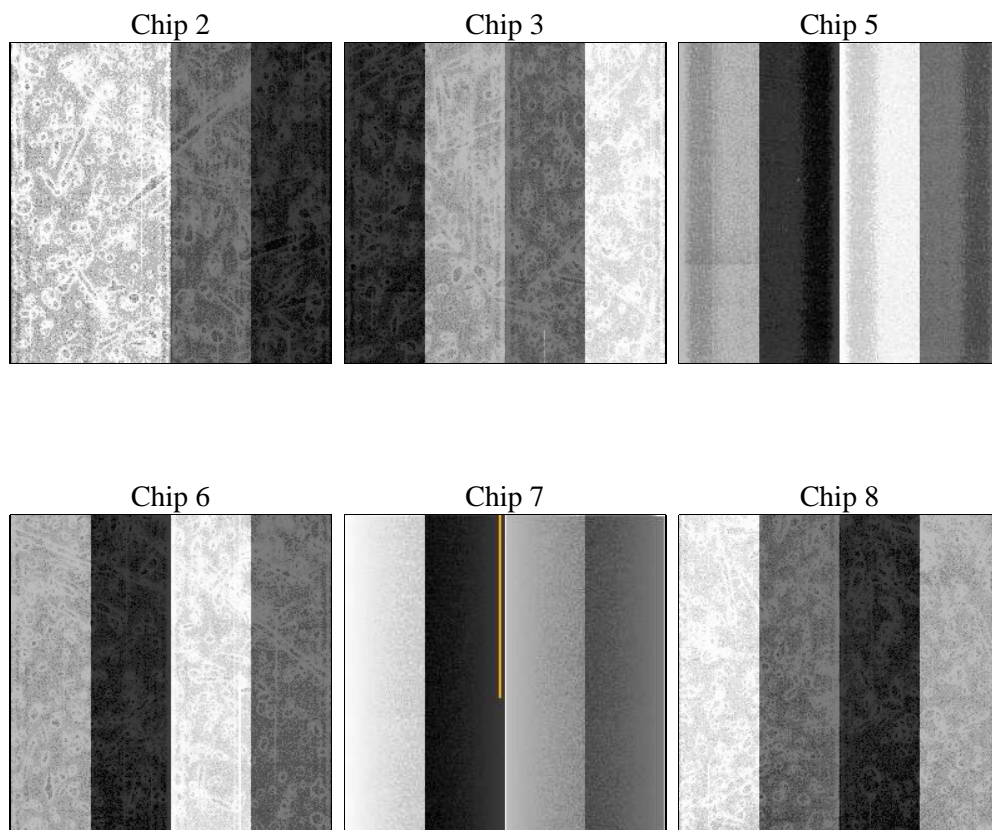
2 OBI

2.1 OBI

2.1.1 Images



2.1.2 Bias



2.1.3 Parameters

obi_num	0	Obi number	sched_exp_time	10000.000000	[s] Scheduled observation exposure time
ascdsver	8.4.5	Processing system revision	ontime	9955.2000092566	Sum of GTIs [s]
caldbver	4.5.1.1	 	ontime2	9951.9590490162	Sum of GTIs [s]
date	2012-08-30T21:27:51	Date and time of file creation	ontime3	9951.9590590298	Sum of GTIs [s]
revision	4	Processing version of data	ontime5	9955.2000092566	Sum of GTIs [s]
			ontime6	9955.2000092566	Sum of GTIs [s]
			ontime7	9955.2000092566	Sum of GTIs [s]
			ontime8	9955.2000092566	Sum of GTIs [s]
			l1events	395142	Number of level 1 events

2.1.4 Events

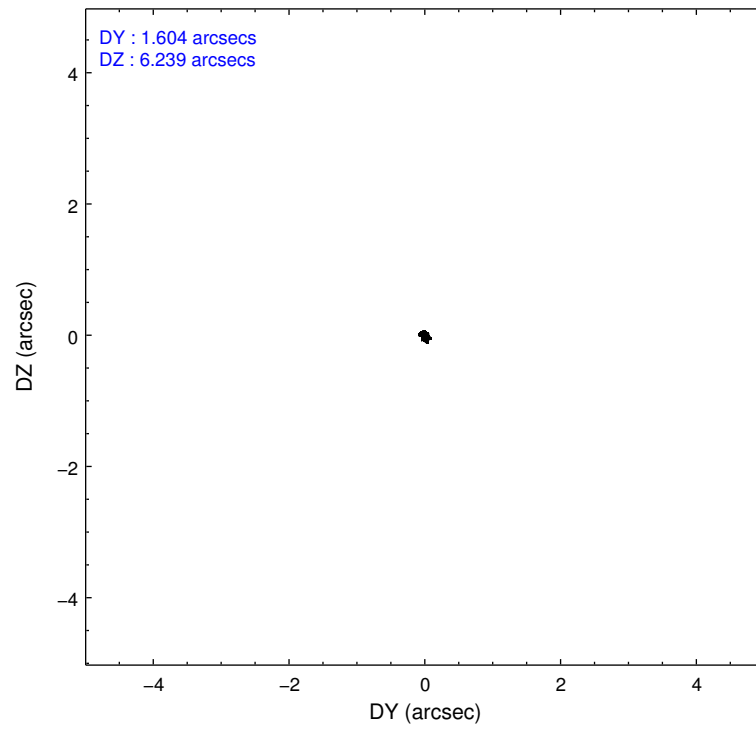
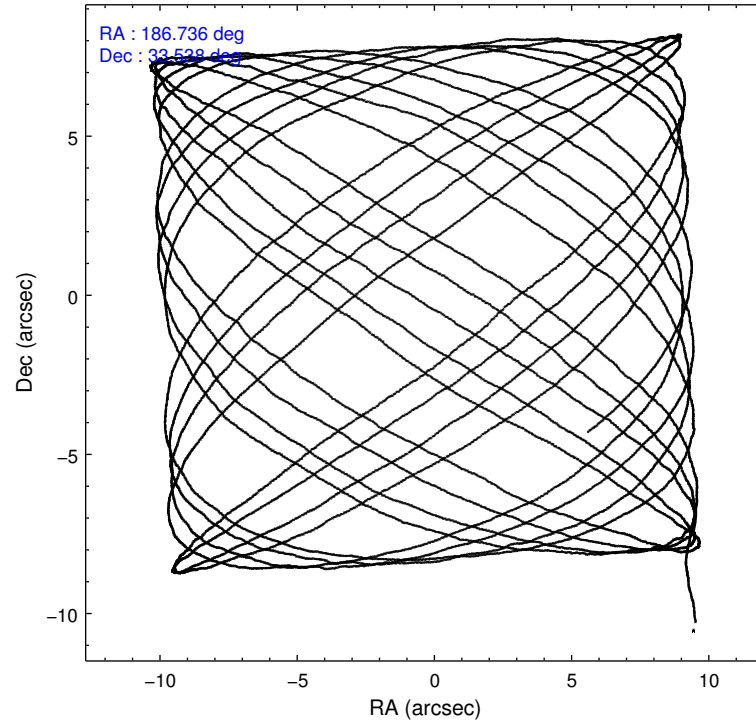
	ccd 2	ccd 3	ccd 5	ccd 6	ccd 7	ccd 8		ccd 2	ccd 3	ccd 5	ccd 6	ccd 7	ccd 8
level 1 events	58659	56706	81191	56148	71011	71427	grade 0 events	2629	3970	8229	2784	3520	5155
rejected events	52389	48875	41231	49553	40020	56108		4%	7%	10%	4%	4%	7%
rejected %	89%	86%	50%	88%	56%	78%	grade 1 events	26	30	139	26	58	41
								0%	0%	0%	0%	0%	0%
							grade 2 events	1366	1399	10553	1342	6165	3111
								2%	2%	12%	2%	8%	4%
							grade 3 events	605	658	1554	646	2925	1693
								1%	1%	1%	1%	4%	2%
							grade 4 events	562	654	1471	594	2897	1557
								0%	1%	1%	1%	4%	2%
							grade 5 events	1913	2021	5736	2299	6677	2841
								3%	3%	7%	4%	9%	3%
							grade 6 events	1110	1156	18173	1231	15491	3803
								1%	2%	22%	2%	21%	5%
							grade 7 events	50448	46818	35336	47226	33278	53226
								86%	82%	43%	84%	46%	74%

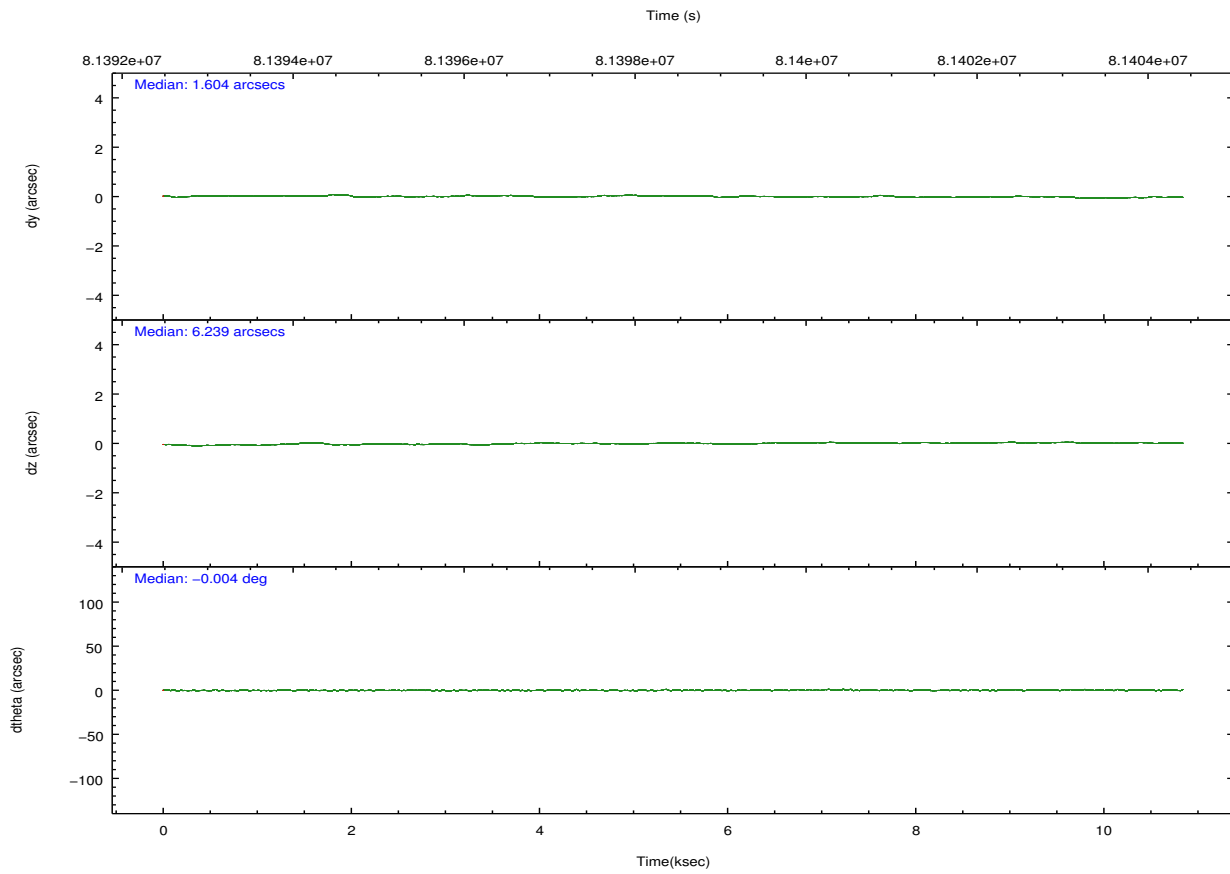
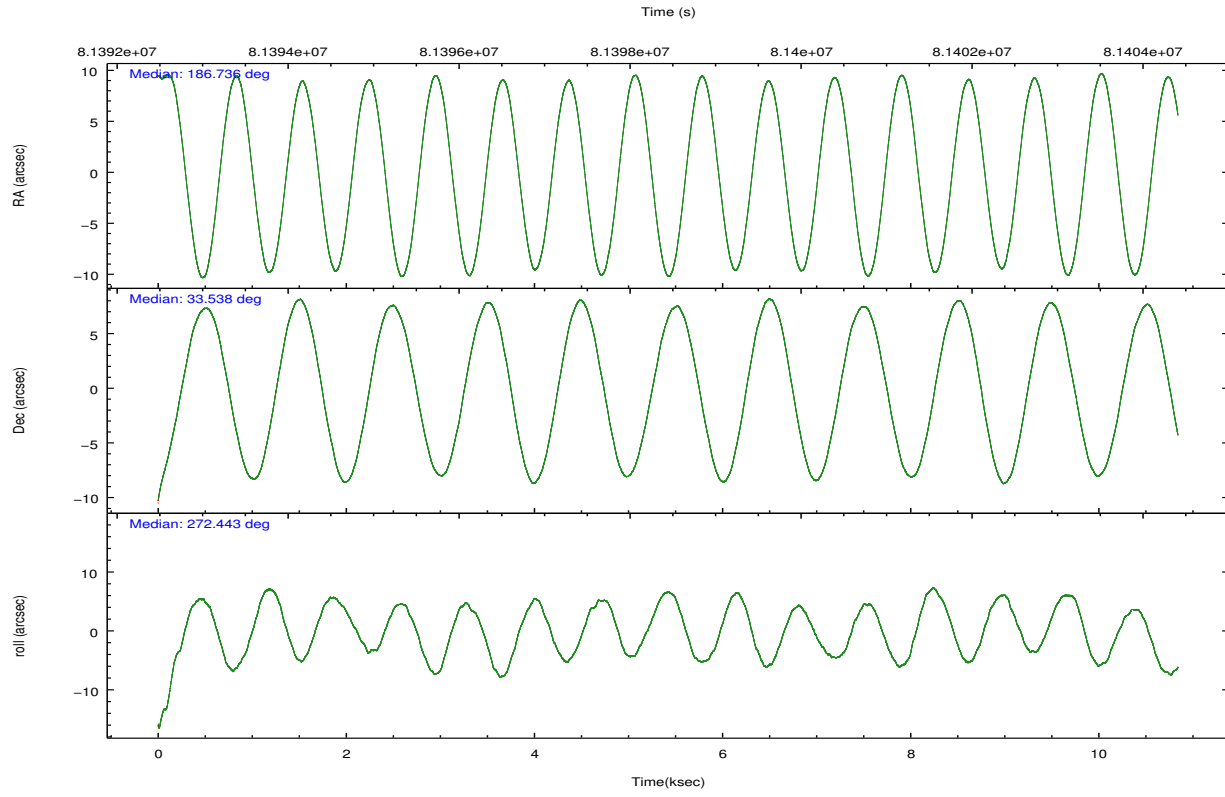
2.2 Compared Parameters

Parameter	Planned	Actual
Instrument	ACIS	ACIS
Detector	ACIS-235678	ACIS-235678
Grating	NONE	NONE
Data mode	VFAINT	VFAINT
Observation mode	POINTING	POINTING
[deg] Pointing RA	186.718052	186.735876767911
[deg] Pointing Dec	33.560719	33.53770462020863
[deg] Pointing Roll	272.302891	272.4496686986068
[mm] SIM focus pos	-0.684267	-0.6828225247311905
[mm] SIM defocus	0	0.001444936568705701
[mm] SIM translation stage pos	-190.132523	-190.1400660498719
[mm] SIM translation stage offset	0	0.00754346686406393
[s] Observation start time (MET)	81393647.184000	81392470.92332999
Observation start date	2000-07-31T01:19:43	2000-07-31T01:01:10
[s] Observation end time (MET)	81403647.184000	81404754.011287
Observation end date	2000-07-31T04:06:23	2000-07-31T04:25:54
Read mode	TIMED	TIMED

Parameter	Planned	Actual
Obspar format version number	7	7
Obspar file type	PREDICTED	ACTUAL
Obspar update status	NONE	UPDATED
Number of optional ACIS chips dropped	0	0
On-chip summing requested	N	N
Subarray requested	NONE	NONE
Alternating exposures requested	N	N
[s] Primary exposure time	0.000000	3.2

2.3 Aspect



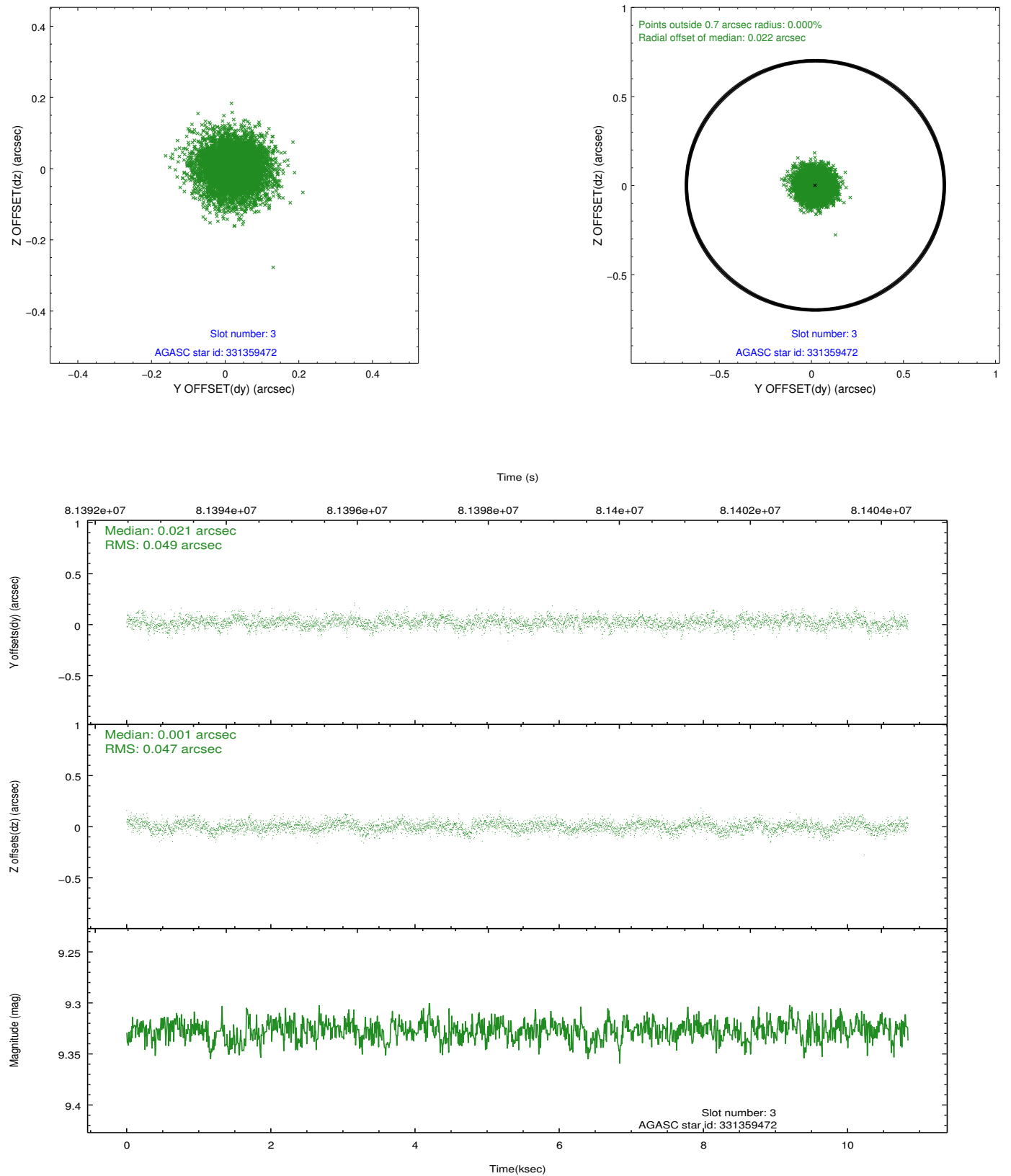


Slot Statistics

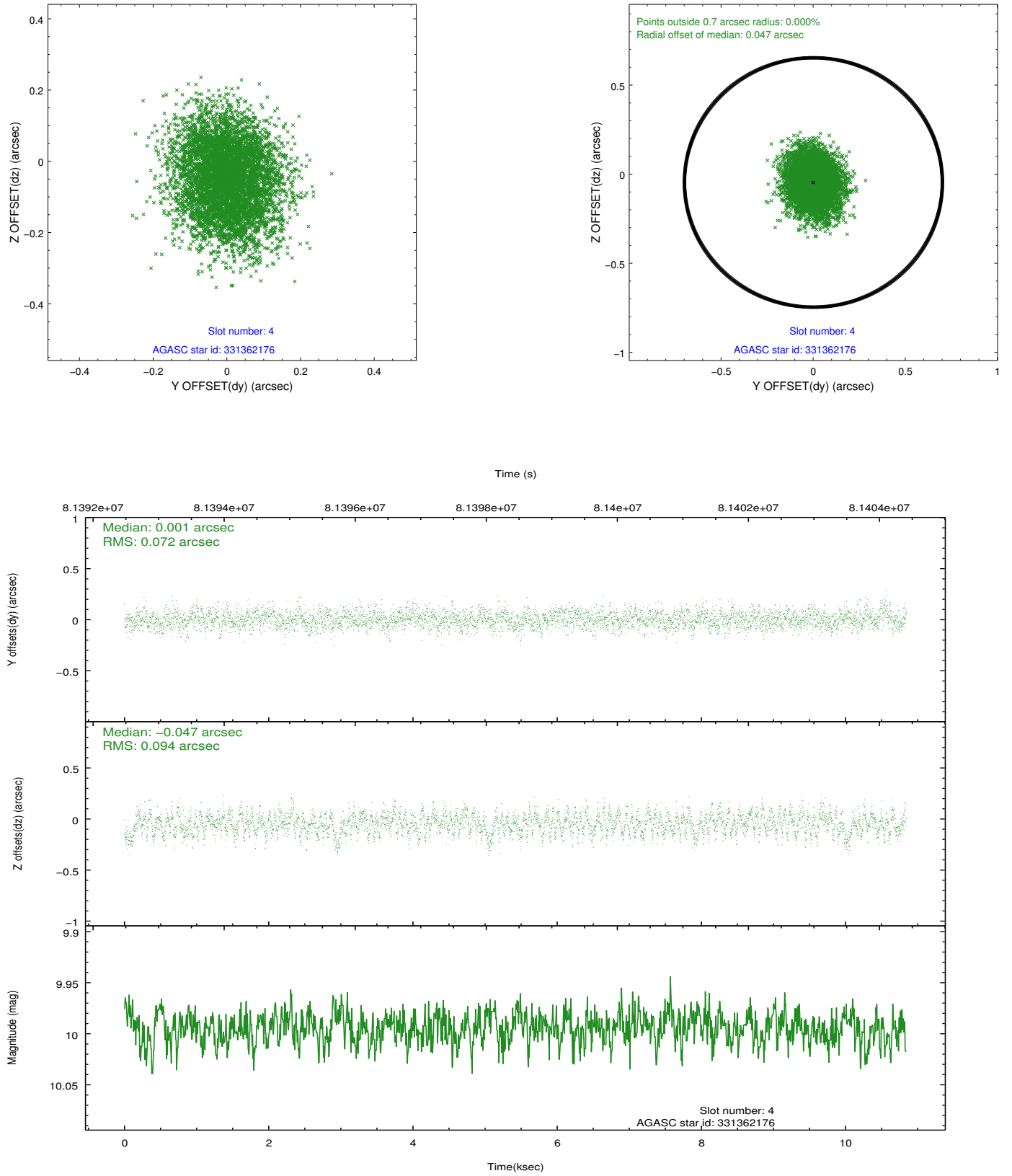
slot	status	id	mag	n_pts	med_dy	med_dz	dr1	dr2	ra	dec	mean_y	mean_z
0	FID	ACIS-S-2	7.11	2645	-0.032	0.011	0.007	0.011	0.000000	0.000000	-754.24	-1727.37
1	FID	ACIS-S-4	7.21	2645	-0.028	0.012	0.006	0.010	0.000000	0.000000	2158.82	180.64
2	FID	ACIS-S-5	7.24	2643	0.029	-0.014	0.006	0.011	0.000000	0.000000	-1806.41	174.81
3	GUIDE	331359472	9.33	5285	0.021	0.001	0.072	0.118	187.224794	33.172746	1452.96	1470.51
4	GUIDE	331362176	9.99	5283	0.001	-0.047	0.127	0.204	186.540423	32.978429	2072.75	-619.21
5	GUIDE	331359840	9.65	5282	-0.056	0.028	0.096	0.156	187.405317	33.549371	116.81	2059.43
6	GUIDE	331358504	10.02	5281	0.088	0.028	0.118	0.190	187.176246	32.923361	2345.08	1292.72
7	GUIDE	331362384	8.81	5287	-0.054	-0.005	0.072	0.116	187.227369	32.923477	2350.46	1446.95

2.4 Star Slots

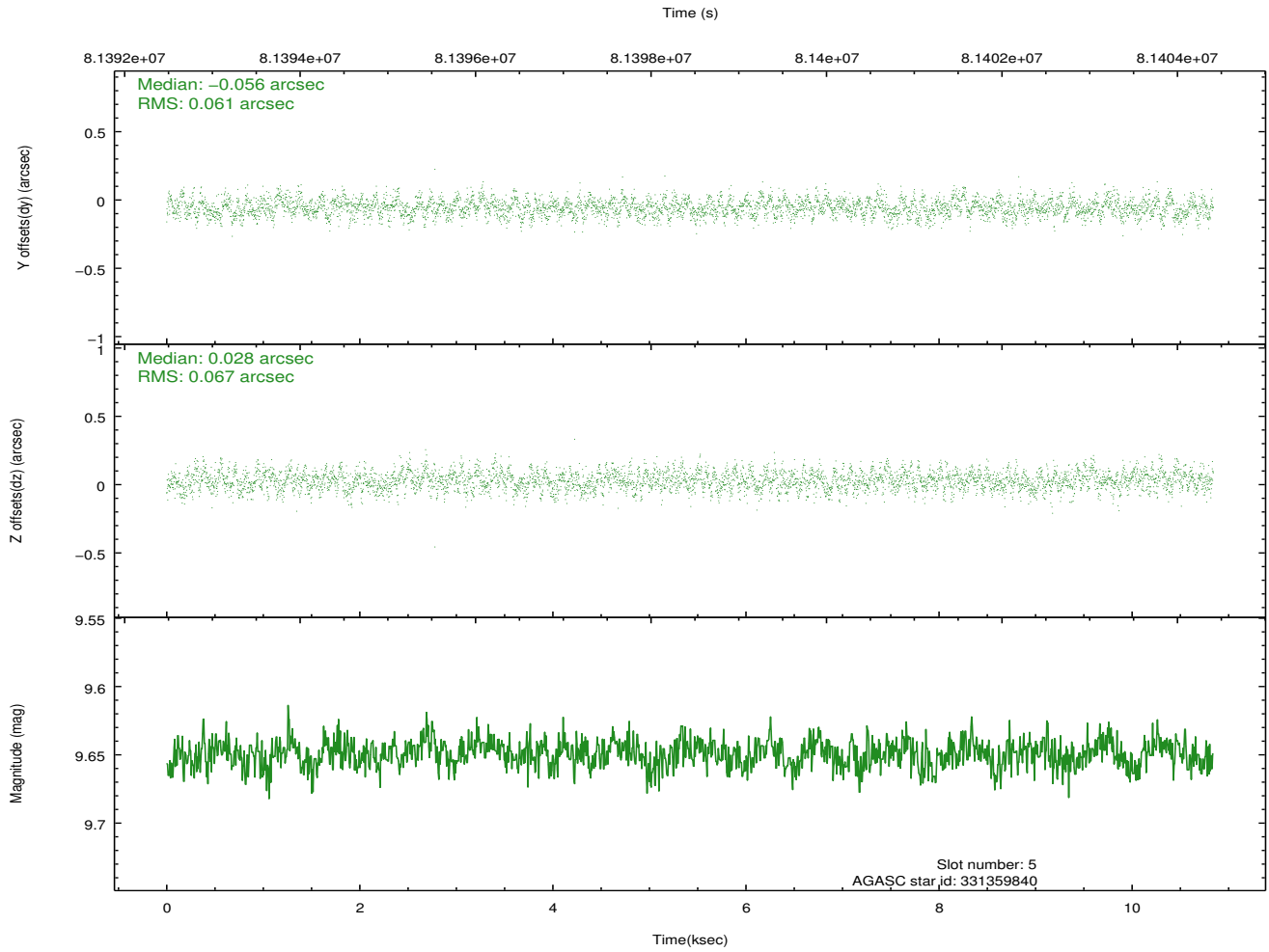
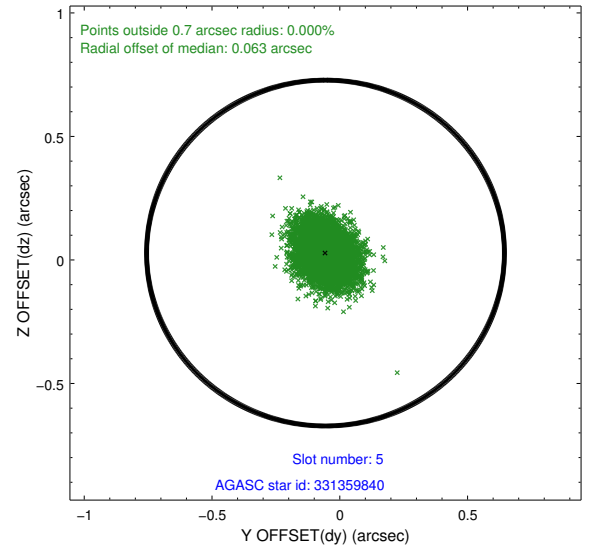
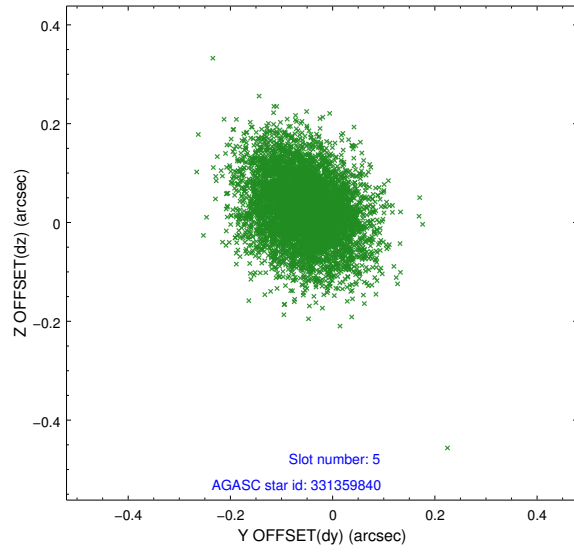
2.4.1 Slot 3



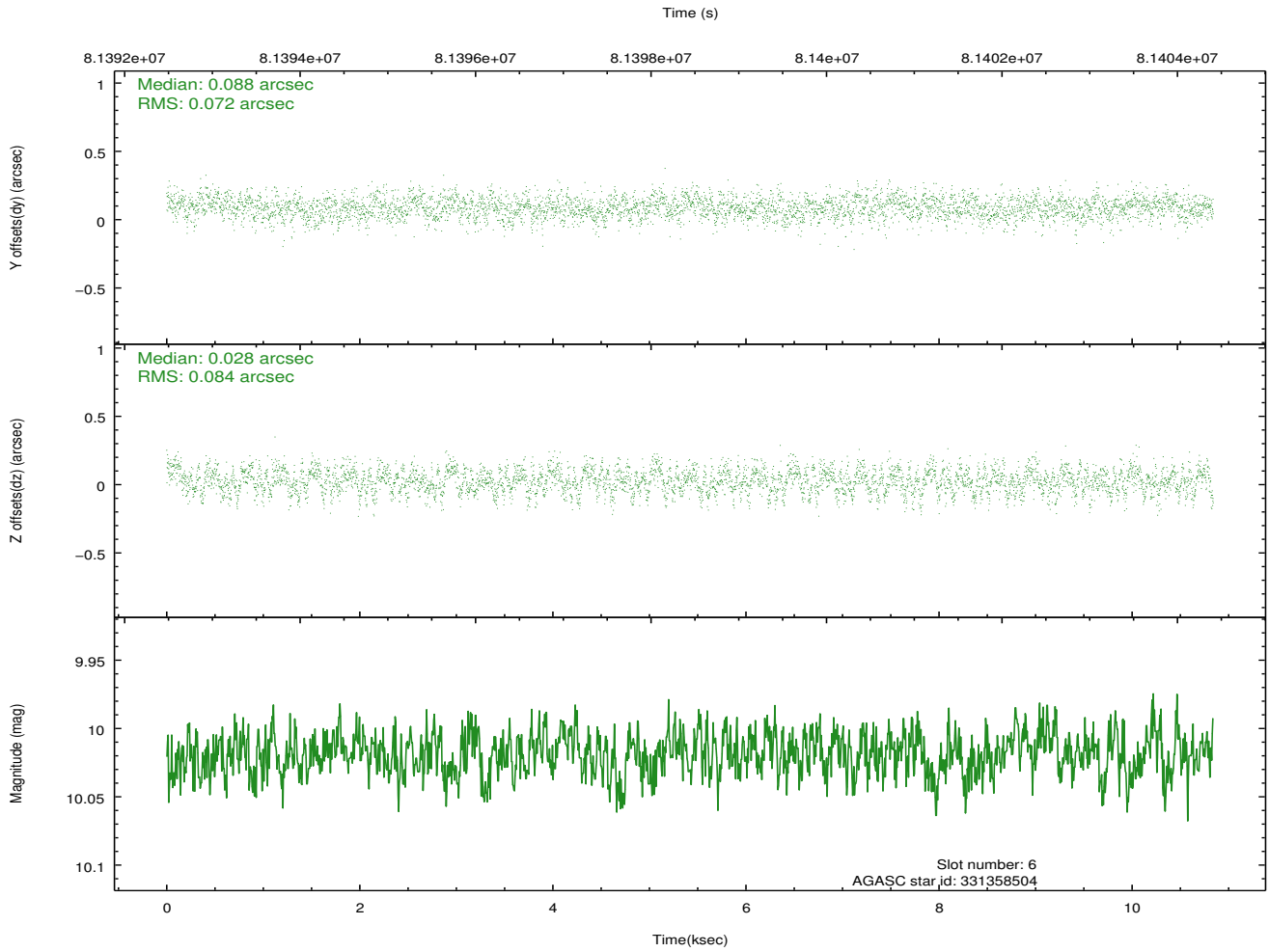
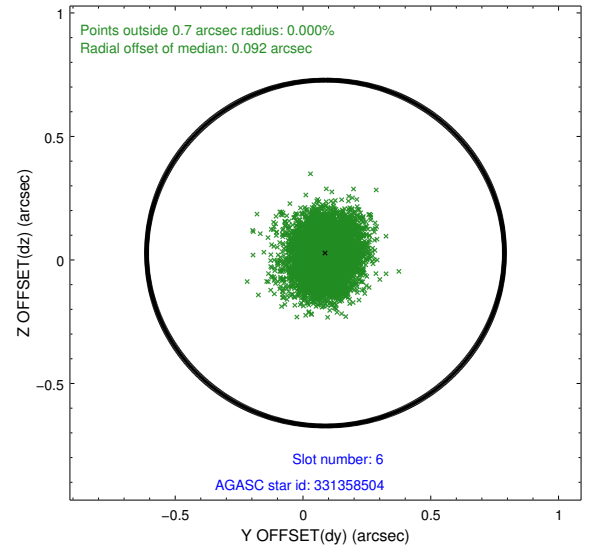
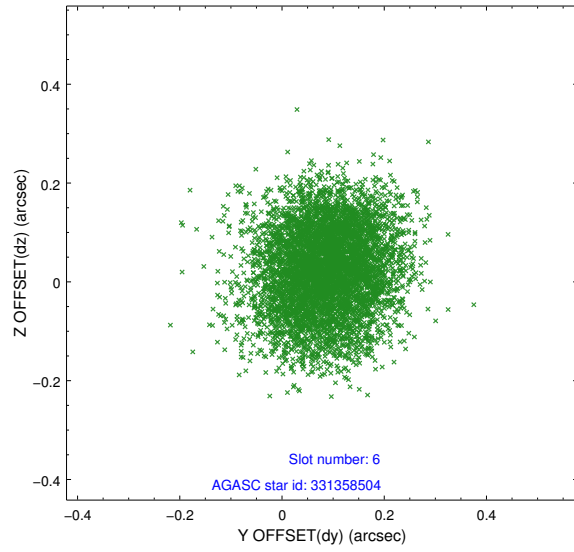
2.4.2 Slot 4



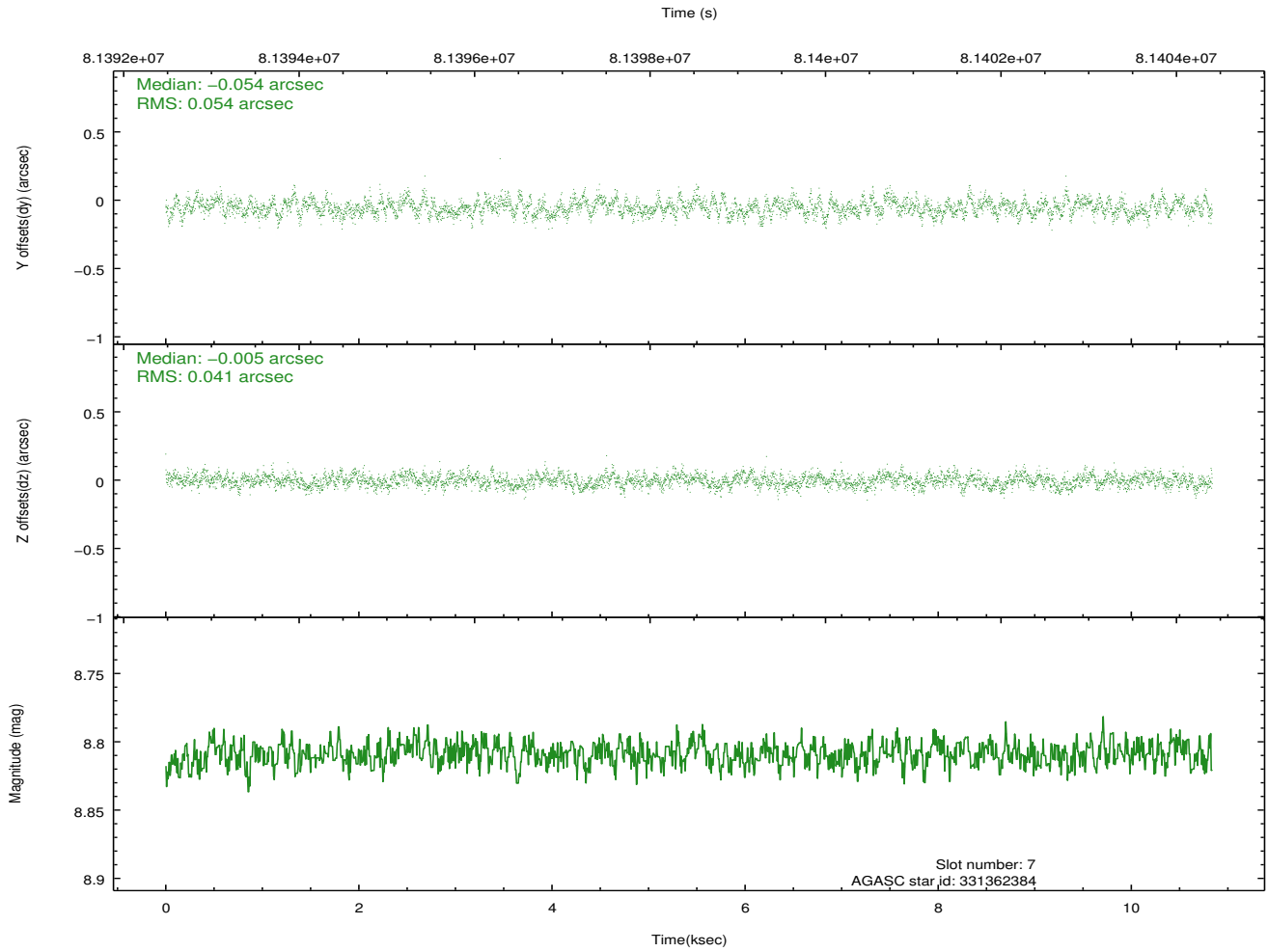
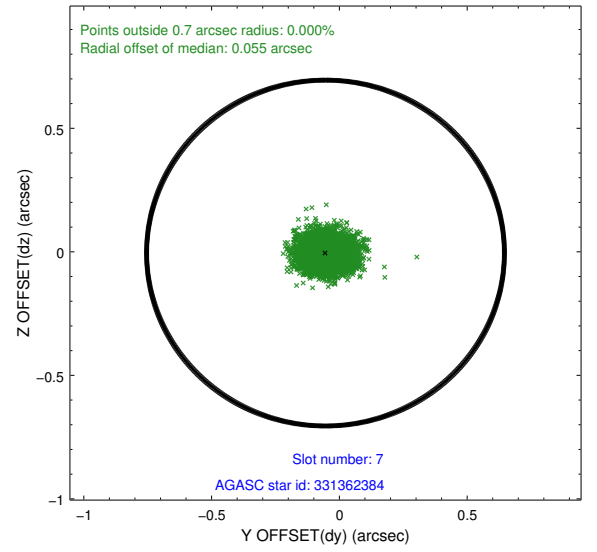
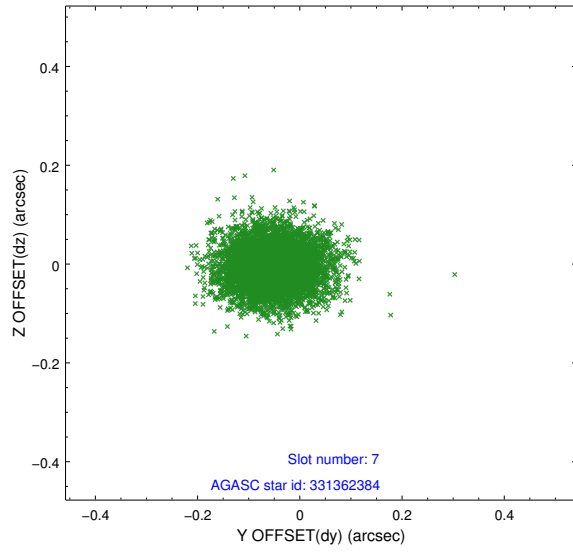
2.4.3 Slot 5



2.4.4 Slot 6

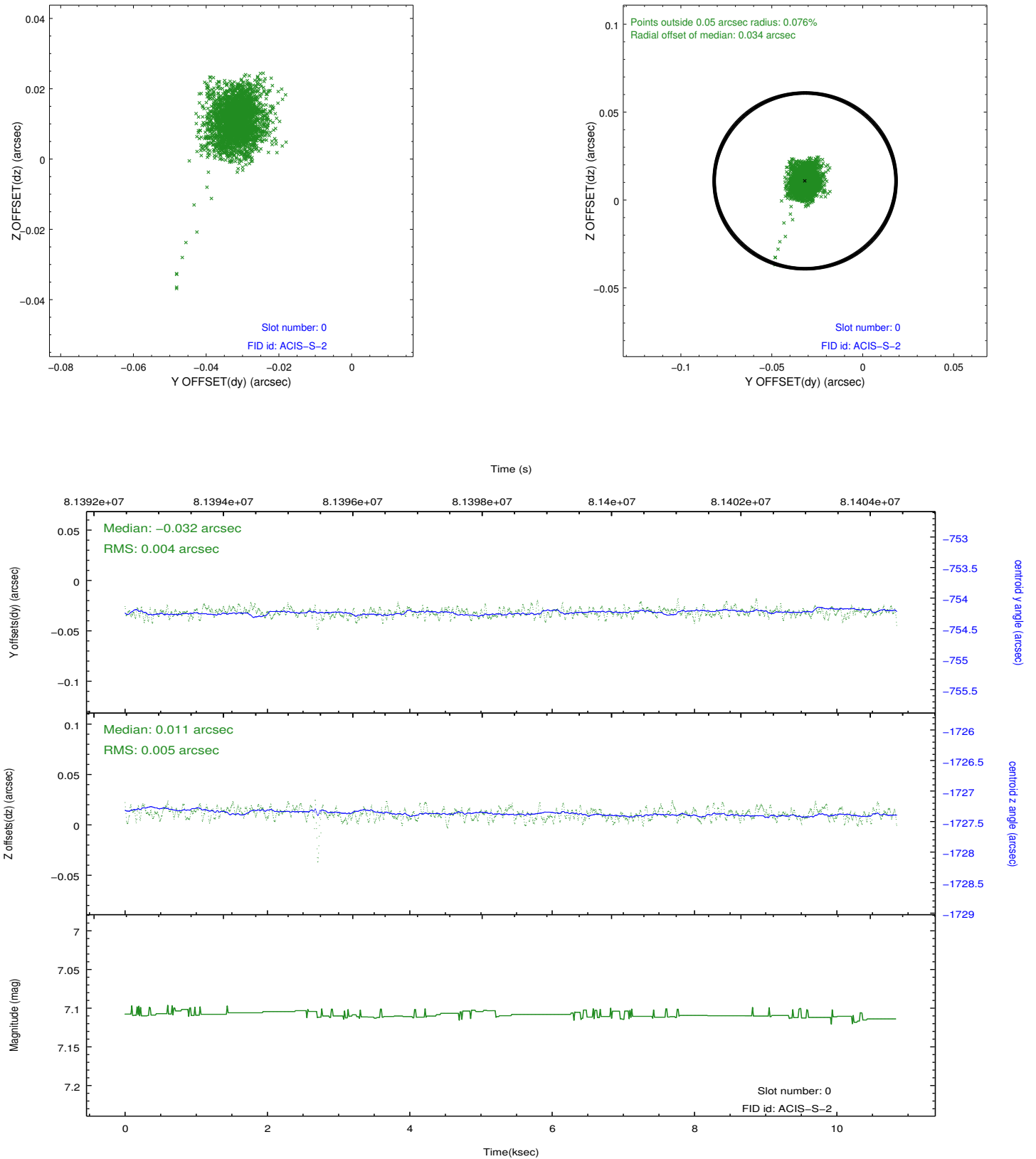


2.4.5 Slot 7

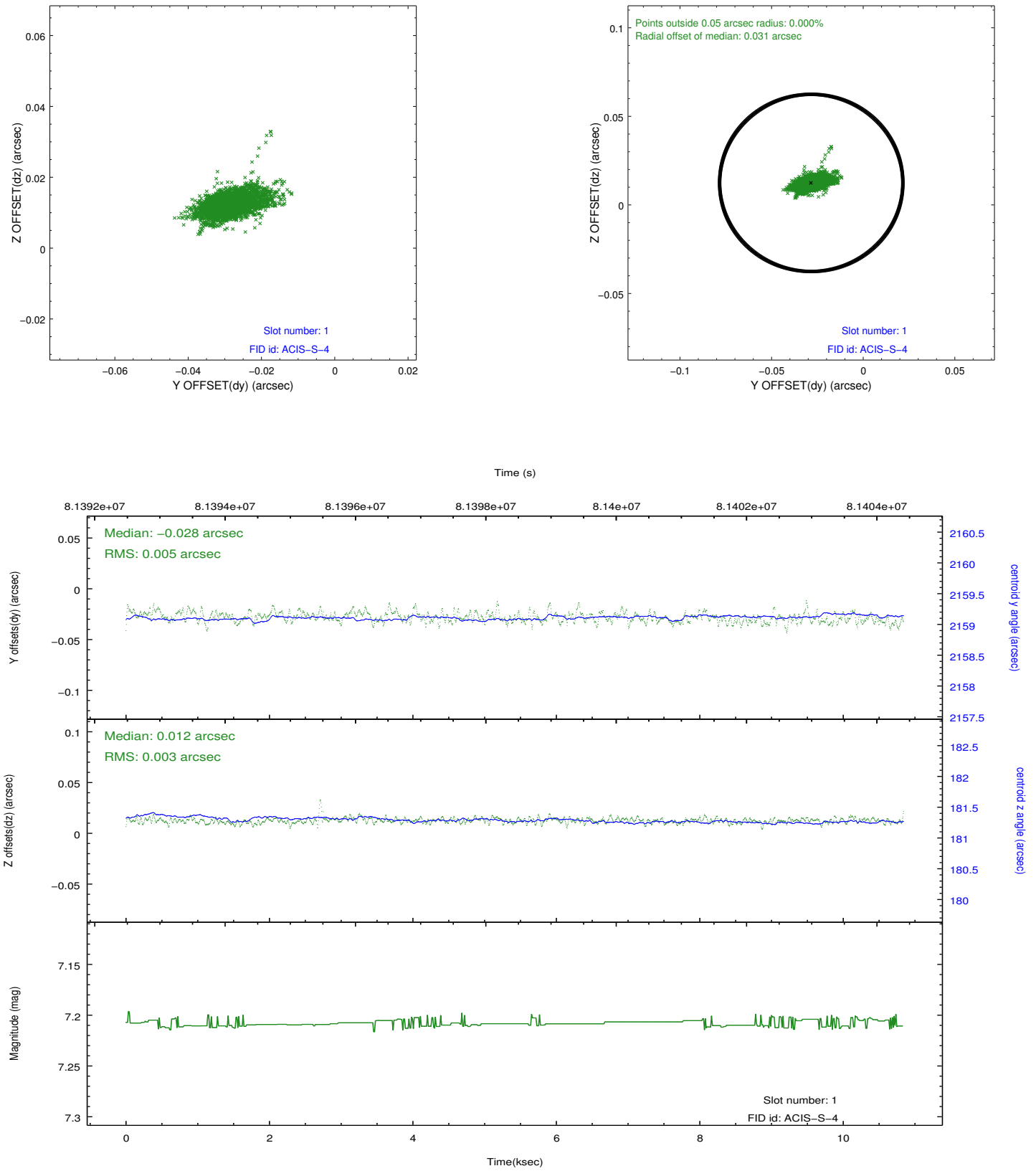


2.5 FID Slots

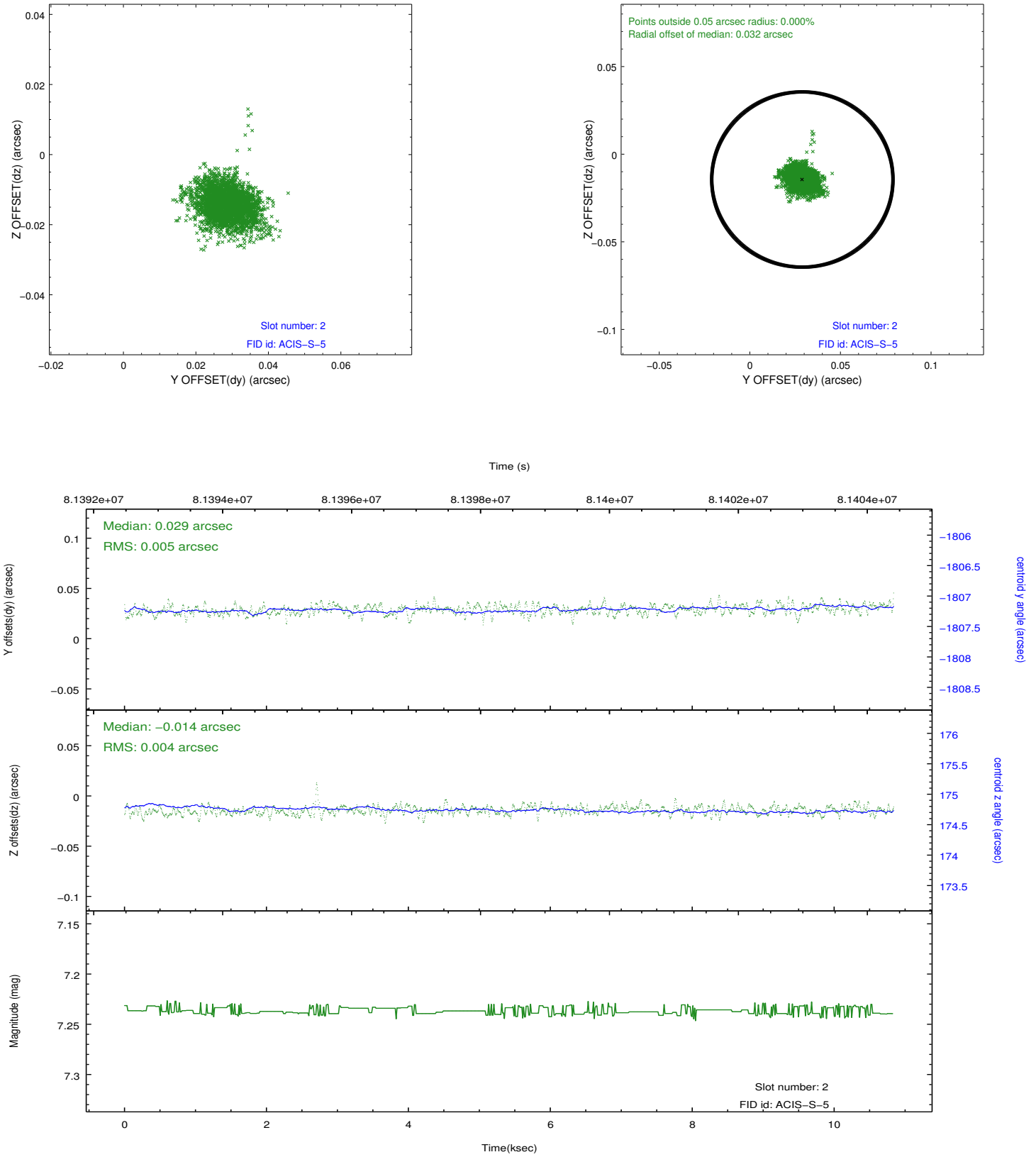
2.5.1 Slot 0



2.5.2 Slot 1



2.5.3 Slot 2



A Summary

A.1 Status

V&V Scientist	Jen Lauer
V&V Date (YYYY-MM-DD)	2012.09.05
V&V Edition	1
V&V Disposition and Status	OK
V&V Charge Time	9.958

A.2 Comments