

# V&V Reference Report

## L2 ASCDS Version : 8.4.4

Observation 9082 - L2 Version 2  
Chandra X-Ray Center

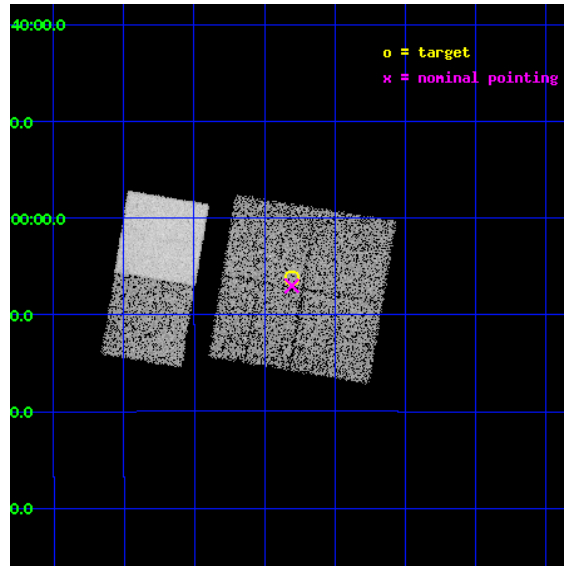
L2 Processing Date : May 25 2012

## Contents

<b>1</b>	<b>Front</b>	<b>2</b>
<b>2</b>	<b>OBI</b>	<b>3</b>
2.1	OBI . . . . .	3
2.1.1	Images . . . . .	3
2.1.2	Bias . . . . .	3
2.1.3	Parameters . . . . .	4
2.1.4	Events . . . . .	4
2.2	Compared Parameters . . . . .	5
2.3	Aspect . . . . .	6
2.4	Star Slots . . . . .	9
2.4.1	Slot 3 . . . . .	9
2.4.2	Slot 4 . . . . .	10
2.4.3	Slot 5 . . . . .	11
2.4.4	Slot 6 . . . . .	12
2.4.5	Slot 7 . . . . .	13
2.5	FID Slots . . . . .	14
2.5.1	Slot 0 . . . . .	14
2.5.2	Slot 1 . . . . .	15
2.5.3	Slot 2 . . . . .	16
<b>A</b>	<b>Summary</b>	<b>17</b>
A.1	Status . . . . .	17
A.2	Comments . . . . .	17

# 1 Front

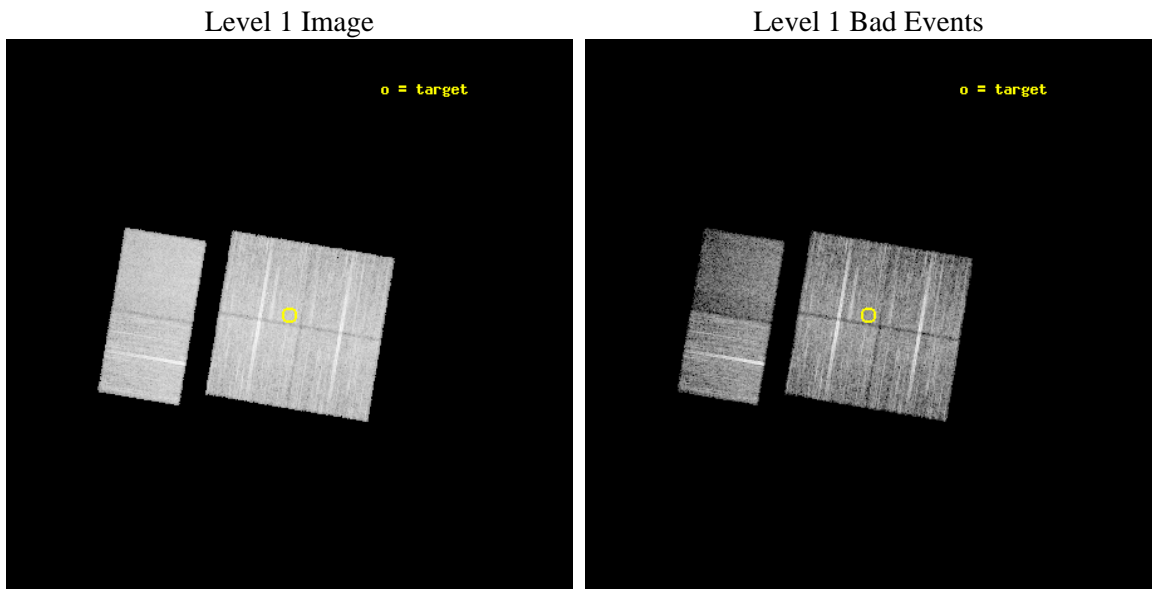
seq_num	500945	Sequence number
obs_id	9082	Observation id
title	Snap-shot survey of potential GeV and TeV pulsars	Proposal title
observer	Professor Gordon Garmire	Principal investigator
object	J1835-1106	Source name
dtcycle	0	&#160
cycle	P	events from which exps? Prim/Second/Both
ra_targ	278.825833	Observer's specified target RA [deg]
dec_targ	-11.104194	Observer's specified target Dec [deg]
ra_nom	278.82617741652	Nominal RA [deg]
dec_nom	-11.117019418723	Nominal Dec [deg]
roll_nom	279.52718336234	Nominal Roll [deg]
revision	2	Processing version of data
ontime	10124.799962342	Sum of GTIs [s]
livetime	9996.593648796	Livetime [s]
ontime0	10121.559001982	Sum of GTIs [s]
ontime1	10124.799962342	Sum of GTIs [s]
ontime2	10124.799962342	Sum of GTIs [s]
ontime3	10124.799962342	Sum of GTIs [s]
ontime6	10124.799962342	Sum of GTIs [s]
ontime7	10124.799962342	Sum of GTIs [s]
l2events	69850	Number of level 2 events



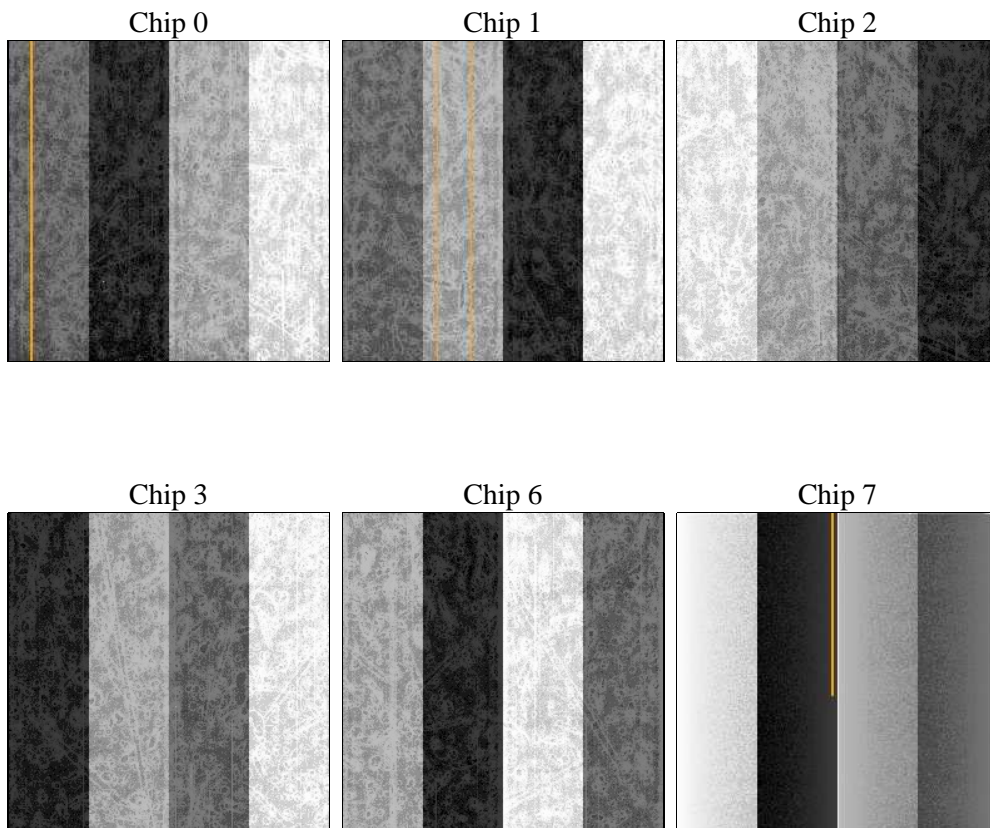
## 2 OBI

### 2.1 OBI

#### 2.1.1 Images



#### 2.1.2 Bias



### 2.1.3 Parameters

obi_num	0	Obi number	sched_exp_time	10000.000000	[s] Scheduled observation exposure time
ascdsver	8.4.4	Processing system revision	ontime	10124.799962342	Sum of GTIs [s]
caldsver	4.4.9	&#160	ontime0	10121.559001982	Sum of GTIs [s]
date	2012-05-25T04:17:19	Date and time of file creation	ontime1	10124.799962342	Sum of GTIs [s]
revision	2	Processing version of data	ontime2	10124.799962342	Sum of GTIs [s]
			ontime3	10124.799962342	Sum of GTIs [s]
			ontime6	10124.799962342	Sum of GTIs [s]
			ontime7	10124.799962342	Sum of GTIs [s]
			l1events	477400	Number of level 1 events

### 2.1.4 Events

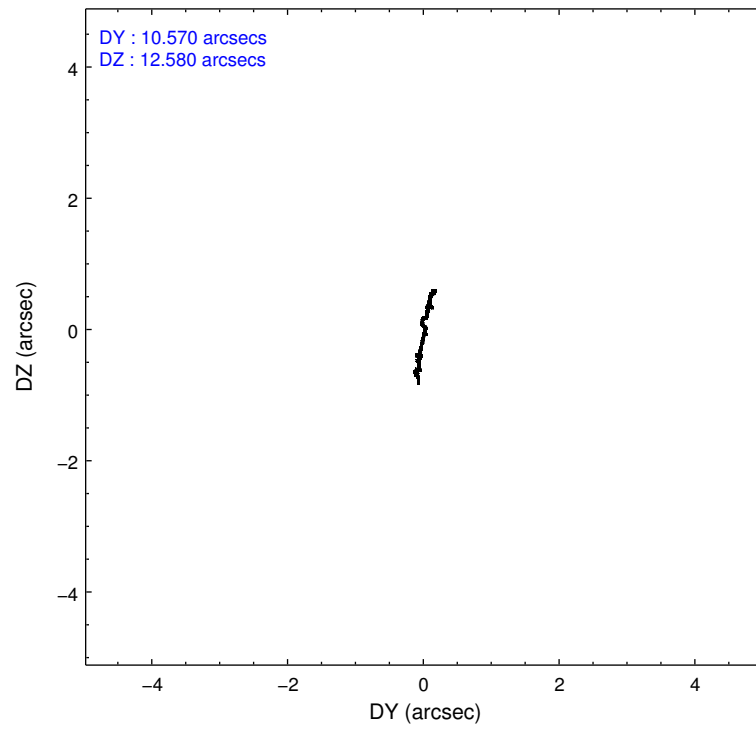
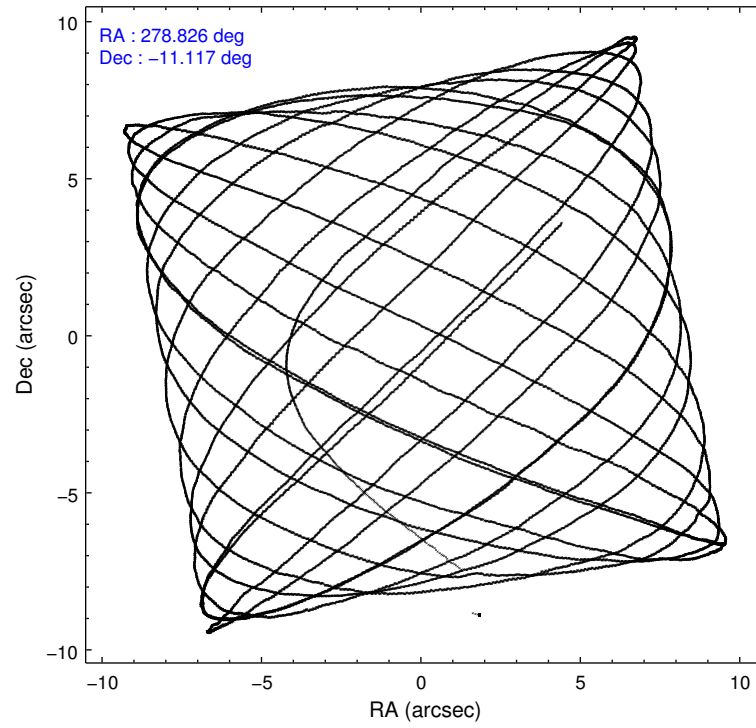
	ccd 0	ccd 1	ccd 2	ccd 3	ccd 6	ccd 7		ccd 0	ccd 1	ccd 2	ccd 3	ccd 6	ccd 7
level 1 events	76466	72759	85545	79458	83961	79211	grade 0 events	3166	3016	3207	2967	3101	3975
rejected events	68347	64603	77648	71990	75602	41184		4%	4%	3%	3%	3%	5%
rejected %	89%	88%	90%	90%	90%	51%	grade 1 events	48	38	50	38	27	114
								0%	0%	0%	0%	0%	0%
							grade 2 events	2003	1835	1989	1575	1925	8409
								2%	2%	2%	1%	2%	10%
							grade 3 events	897	974	725	833	936	3647
								1%	1%	0%	1%	1%	4%
							grade 4 events	834	859	873	844	874	3637
								1%	1%	1%	1%	1%	4%
							grade 5 events	2363	2656	2255	2820	2715	8391
								3%	3%	2%	3%	3%	10%
							grade 6 events	1465	1720	1351	1484	1760	19445
								1%	2%	1%	1%	2%	24%
							grade 7 events	65690	61661	75095	68897	72623	31593
								85%	84%	87%	86%	86%	39%

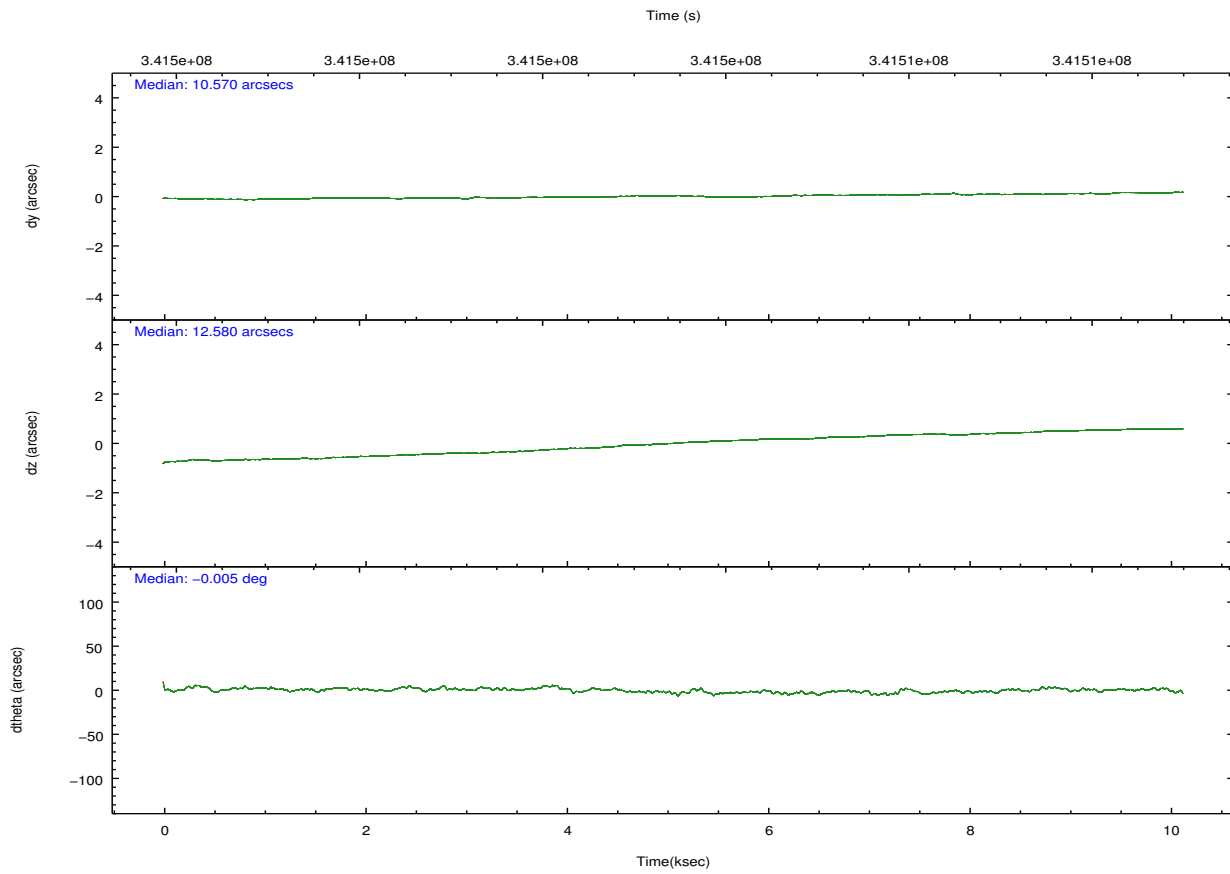
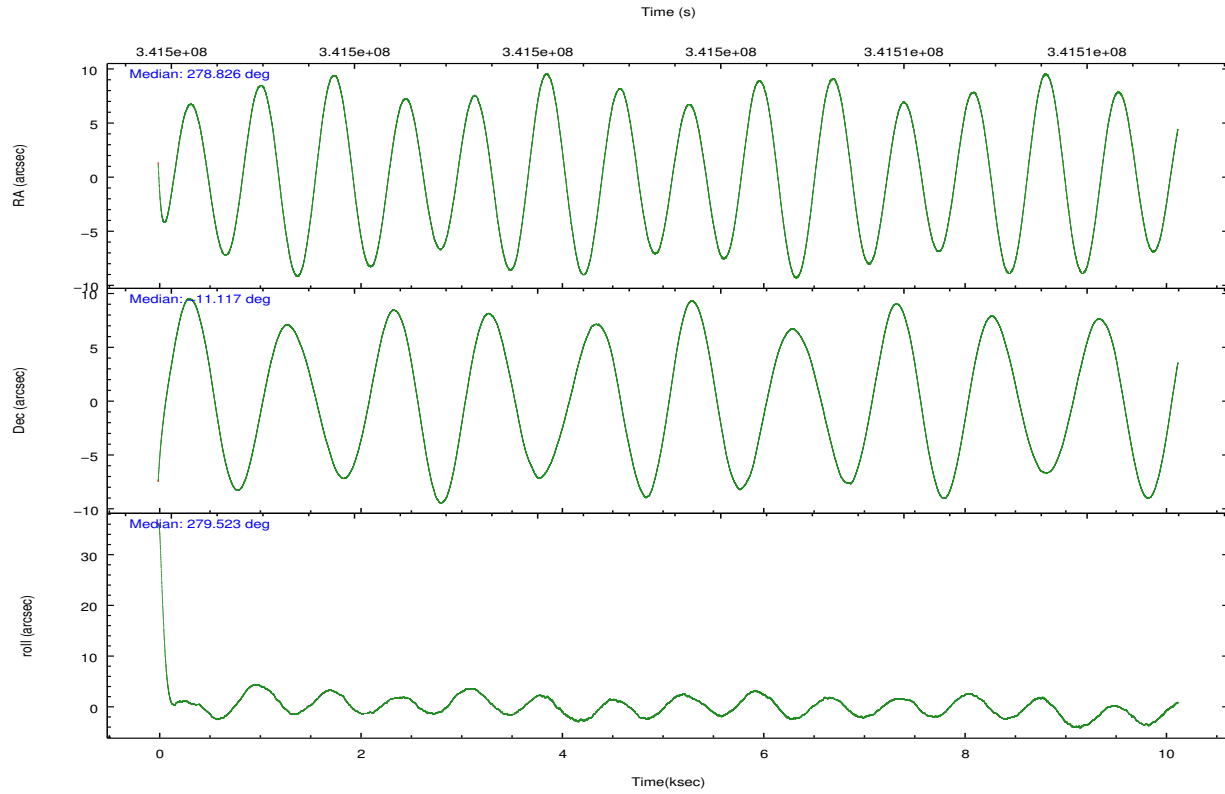


## 2.2 Compared Parameters

Parameter	Planned	Actual	Parameter	Planned	Actual
Instrument	ACIS	ACIS	Obspar format version number	7	7
Detector	ACIS-012367	ACIS-012367	Obspar file type	PREDICTED	ACTUAL
Grating	NONE	NONE	Obspar update status	NONE	UPDATED
Data mode	VFAINT	VFAINT	CCD I0 on	Y	Y
Observation mode	POINTING	POINTING	CCD I1 on	Y	Y
[deg] Pointing RA	278.808265	278.8261774165189	CCD I2 on	Y	Y
[deg] Pointing Dec	-11.095873	-11.11701941872271	CCD I3 on	Y	Y
[deg] Pointing Roll	279.315001	279.5271833623409	CCD S0 on	N	N
[mm] SIM focus pos	-0.782348	-0.7809083437167272	CCD S1 on	N	N
[mm] SIM defocus	0	0.001439871863259334	CCD S2 on	O2	Y
[mm] SIM translation stage pos	-232.122463	-232.1190743247176	CCD S3 on	O1	Y
[mm] SIM translation stage offset	-1.47	-1.473378678212043	CCD S4 on	N	N
[s] Observation start time (MET)	341498483.184000	341497295.50575	CCD S5 on	N	N
Observation start date	2008-10-27T12:40:18	2008-10-27T12:21:35	Number of optional ACIS chips dropped	0	0
[s] Observation end time (MET)	341508483.184000	341508806.76882	On-chip summing requested	N	N
Observation end date	2008-10-27T15:26:58	2008-10-27T15:33:26	Subarray requested	NONE	NONE
Read mode	TIMED	TIMED	Alternating exposures requested	N	N
			[s] Primary exposure time	0.000000	3.2

## 2.3 Aspect



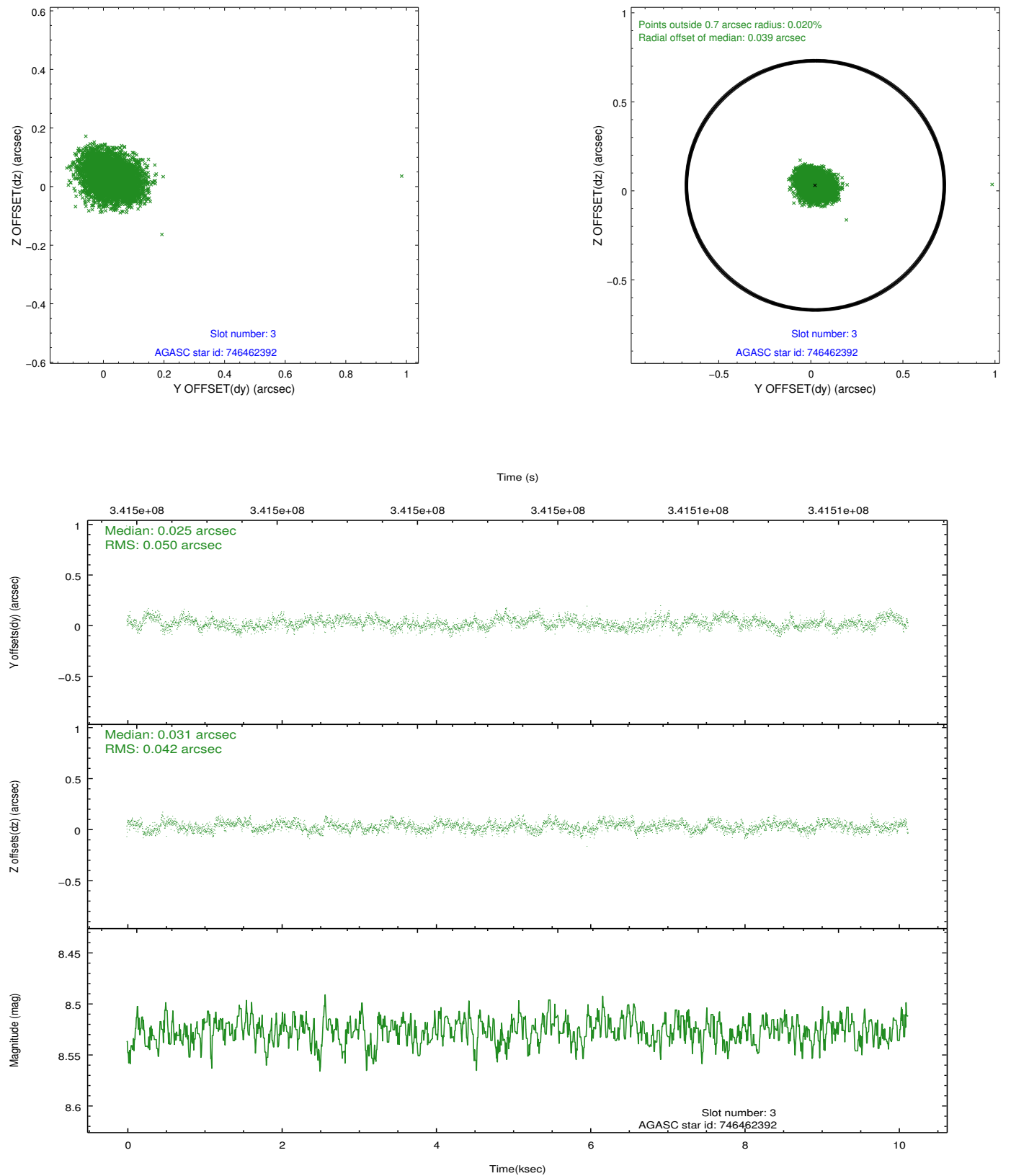


### Slot Statistics

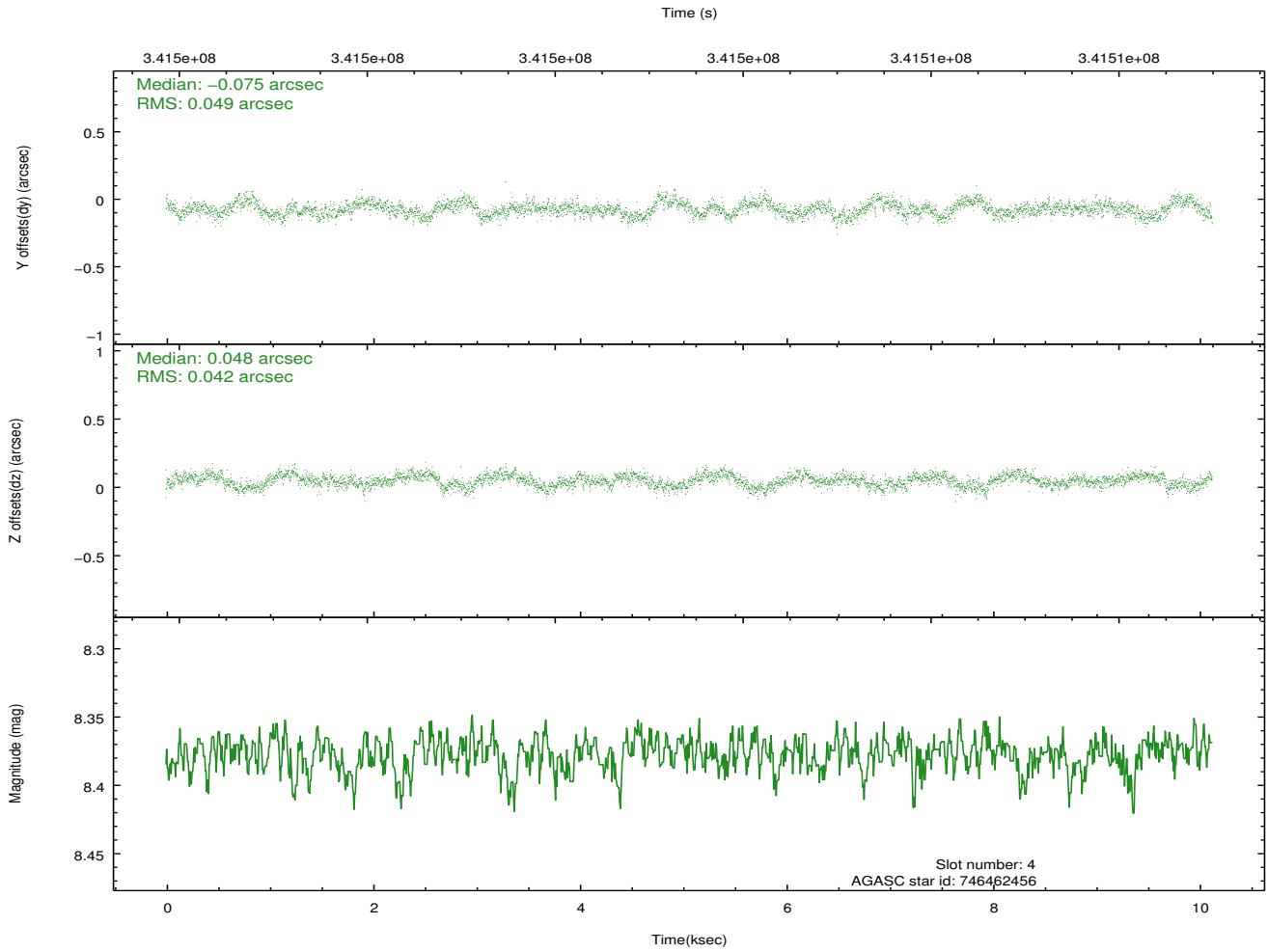
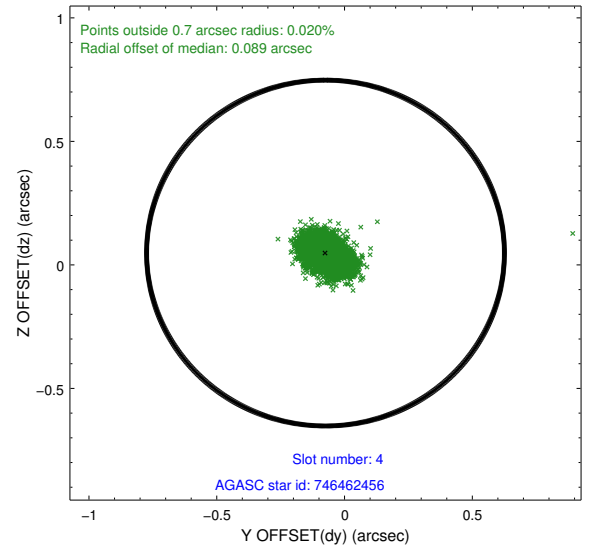
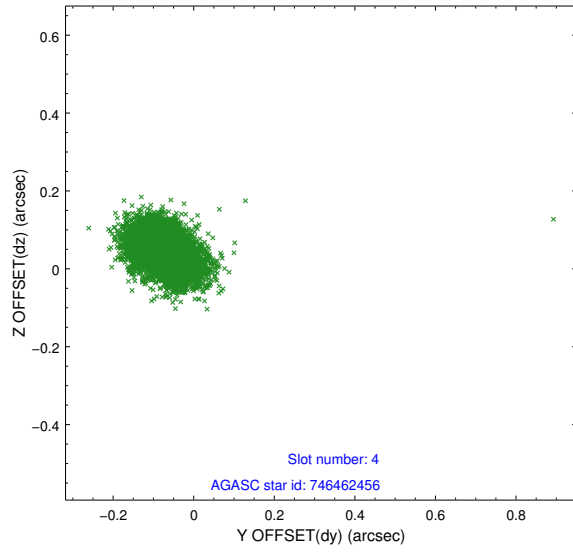
slot	status	id	mag	n_pts	med_dy	med_dz	dr1	dr2	ra	dec	mean_y	mean_z
0	FID	ACIS-I-1	7.04	2471	-0.025	-0.020	0.032	0.057	0.000000	0.000000	928.99	-866.21
1	FID	ACIS-I-2	6.96	2471	-0.158	-0.045	0.021	0.028	0.000000	0.000000	-765.02	-872.82
2	FID	ACIS-I-4	6.95	2471	0.083	0.125	0.021	0.036	0.000000	0.000000	2148.58	1033.70
3	GUIDE	746462392	8.53	4941	0.025	0.031	0.069	0.110	279.038421	-10.890715	-594.80	923.51
4	GUIDE	746462456	8.38	4939	-0.075	0.048	0.067	0.110	278.652171	-10.530173	-2097.71	-215.17
5	GUIDE	746462680	9.02	4938	-0.041	0.001	0.088	0.137	278.660755	-10.782756	-1196.91	-332.21
6	GUIDE	746990264	9.41	4930	0.377	-0.177	0.096	0.160	278.935033	-11.674736	2129.19	103.89
7	GUIDE	746462896	9.65	4933	-0.288	0.102	0.109	0.180	279.425007	-10.726062	-958.02	2367.89

## 2.4 Star Slots

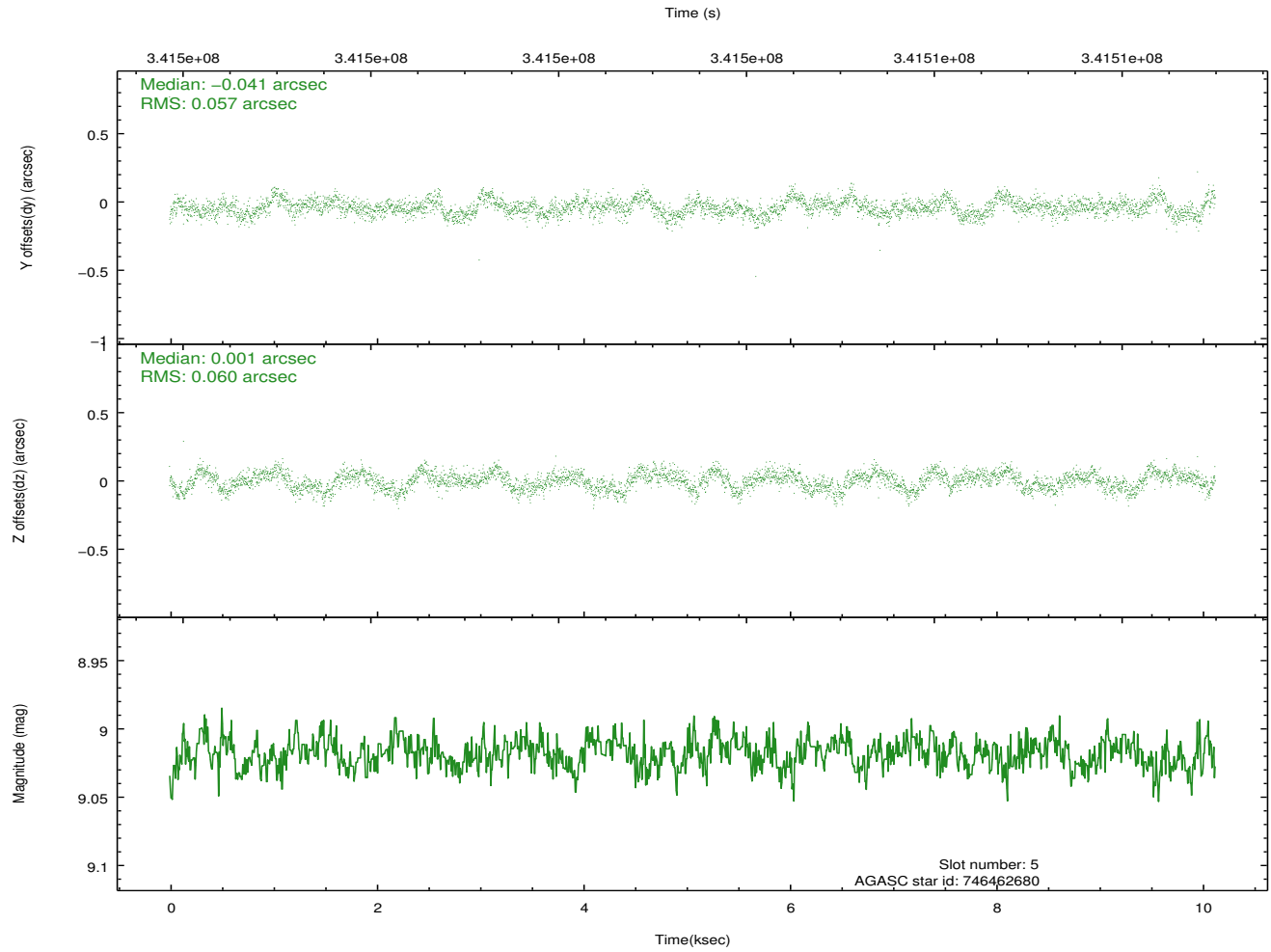
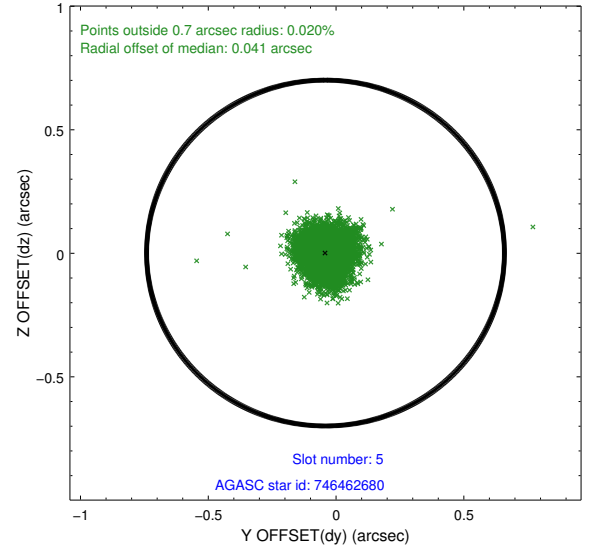
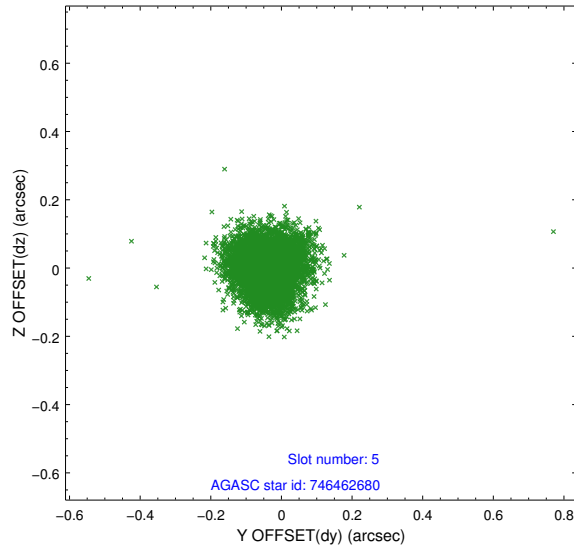
### 2.4.1 Slot 3



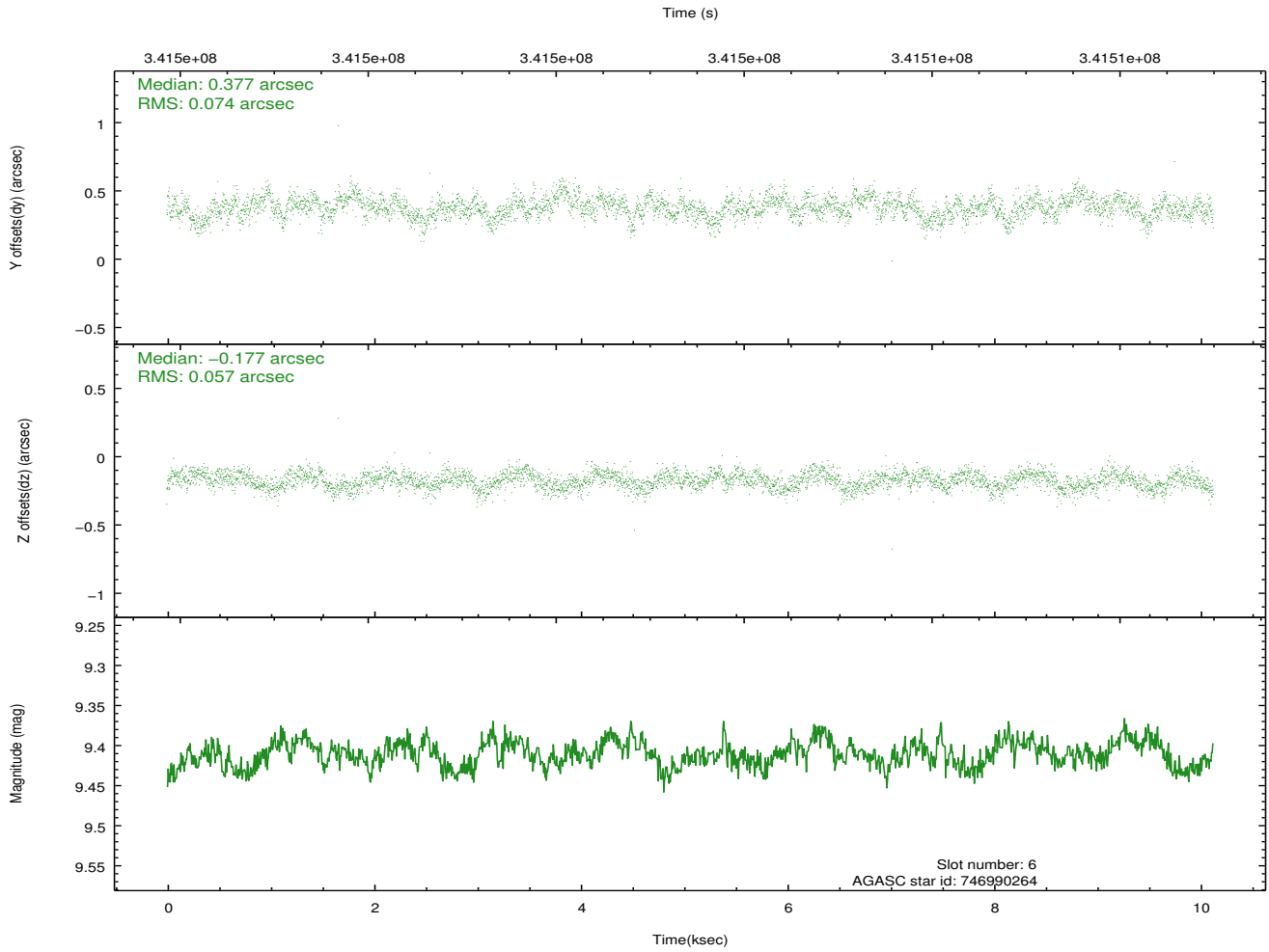
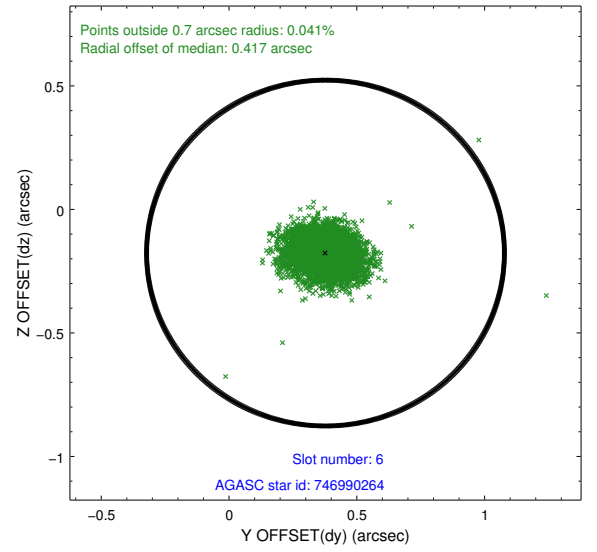
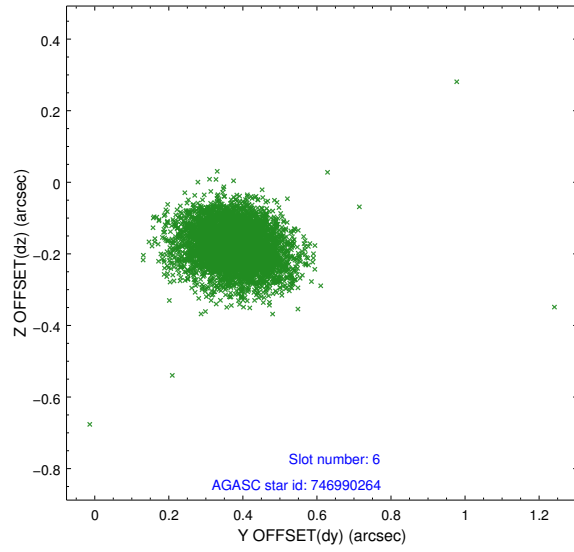
## 2.4.2 Slot 4



### 2.4.3 Slot 5

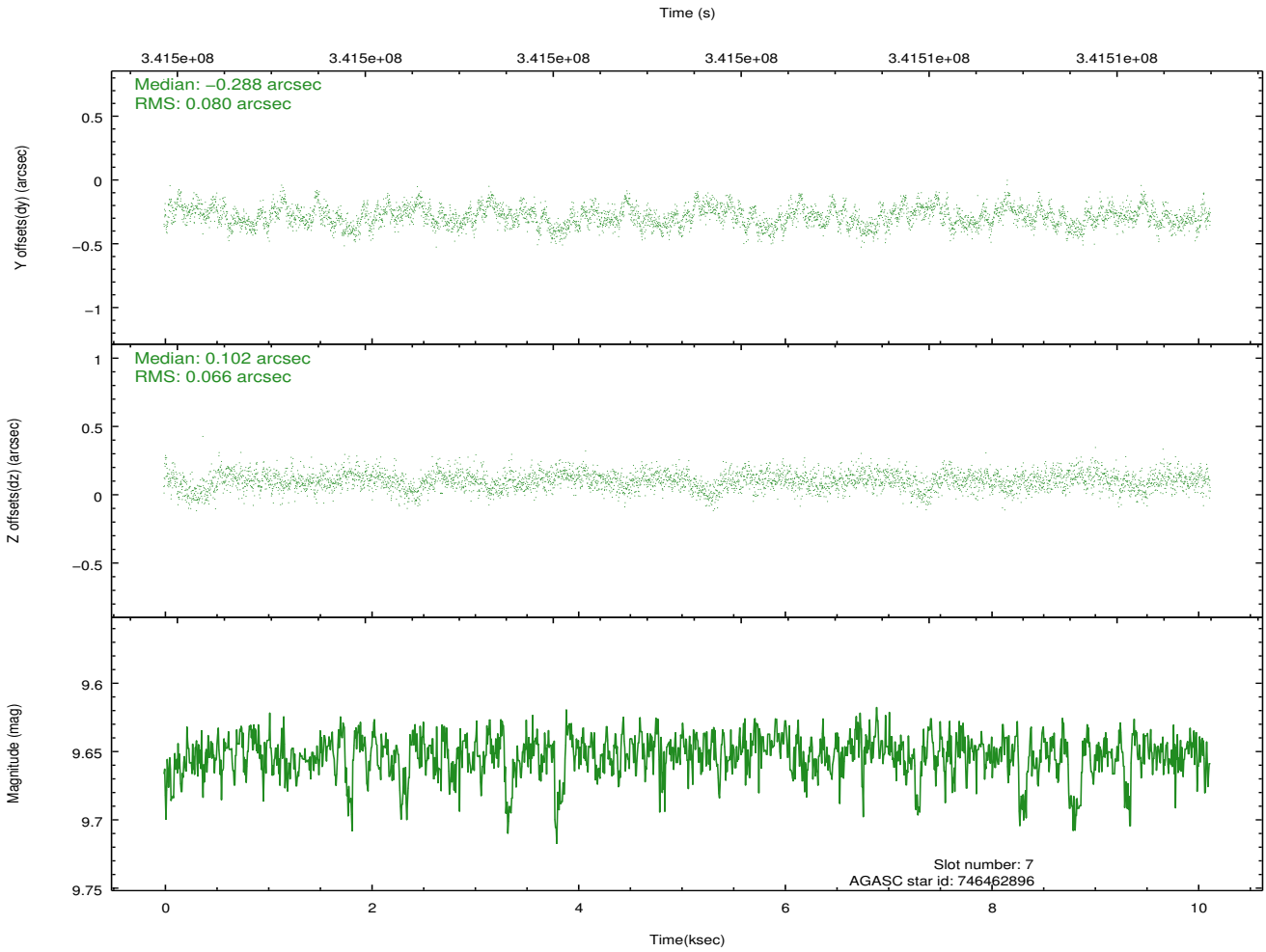
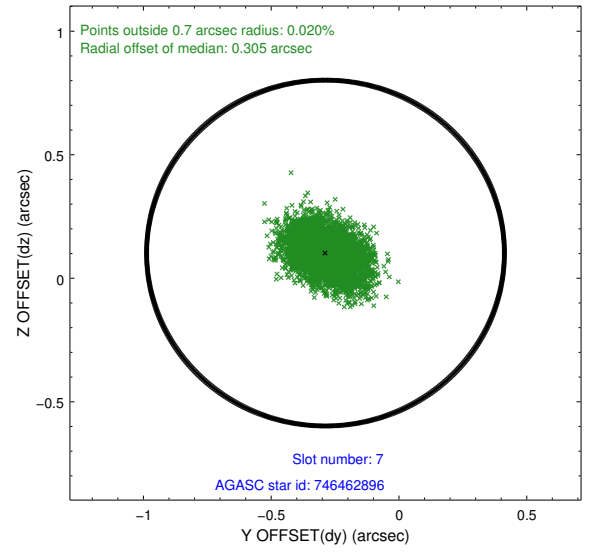
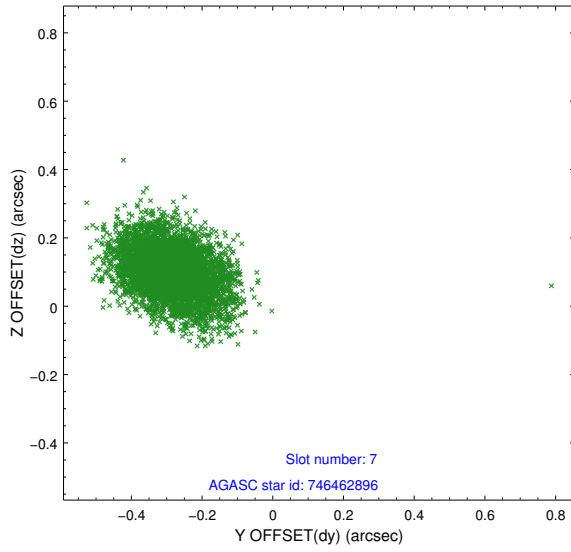


## 2.4.4 Slot 6



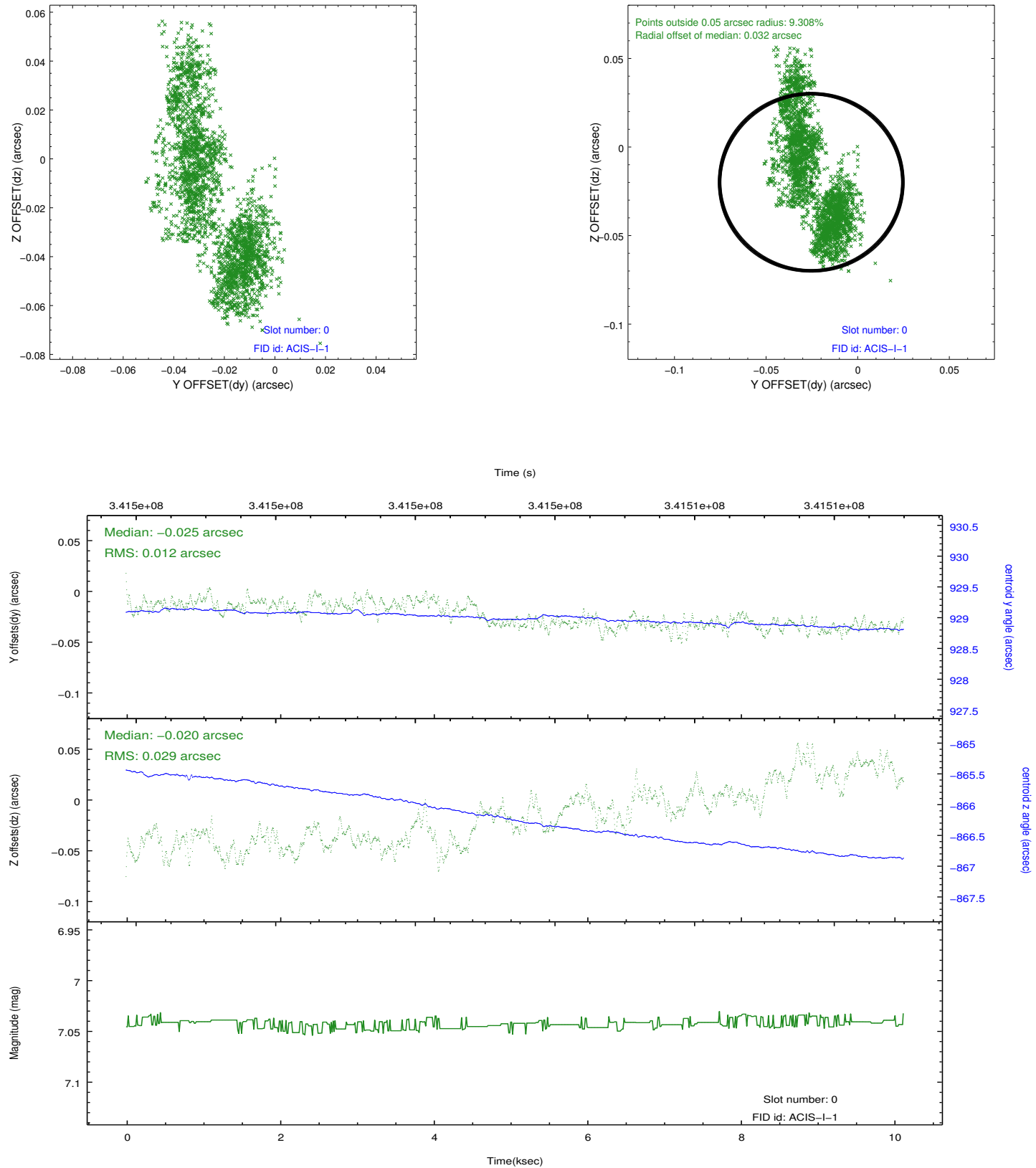


## 2.4.5 Slot 7

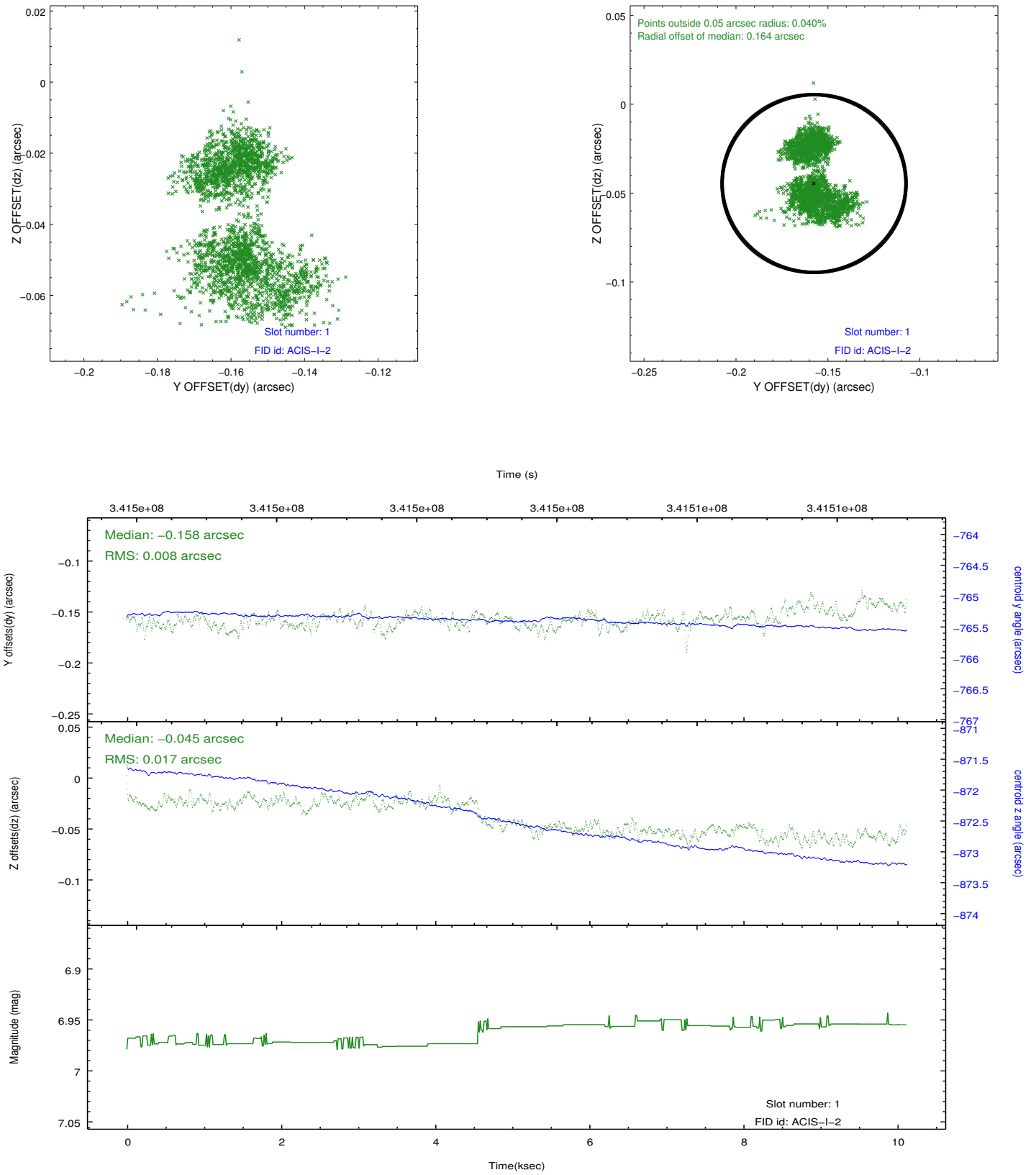


## 2.5 FID Slots

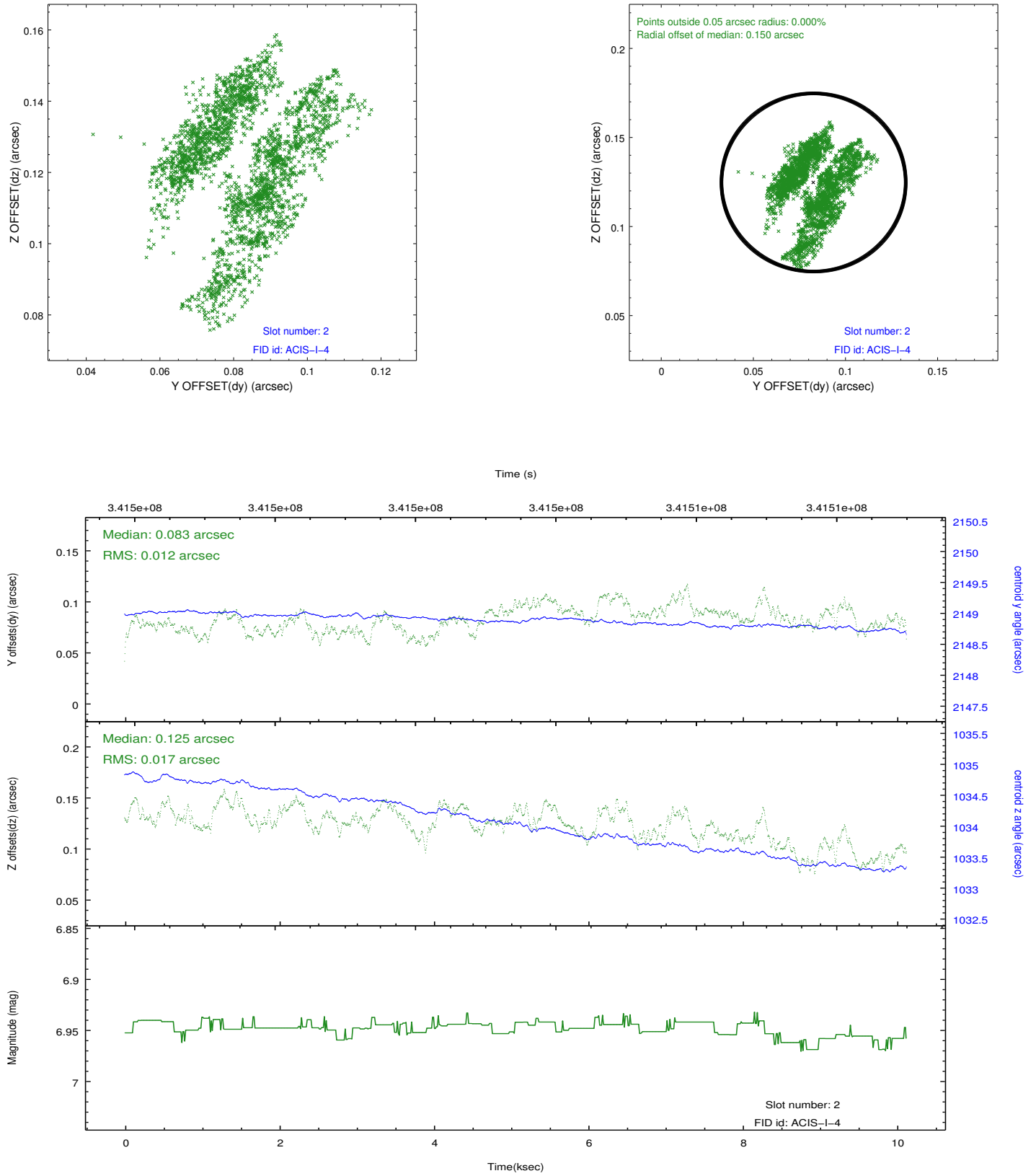
### 2.5.1 Slot 0



## 2.5.2 Slot 1



### 2.5.3 Slot 2



## A Summary

### A.1 Status

V&V Scientist	Joy Nichols
V&V Date (YYYY-MM-DD)	2012.06.01
V&V Edition	1
V&V Disposition and Status	OK
V&V Charge Time	10.1247999

### A.2 Comments