

V&V Reference Report

L2 ASCDS Version : 8.4.5

Observation 9072 - L2 Version 2
Chandra X-Ray Center

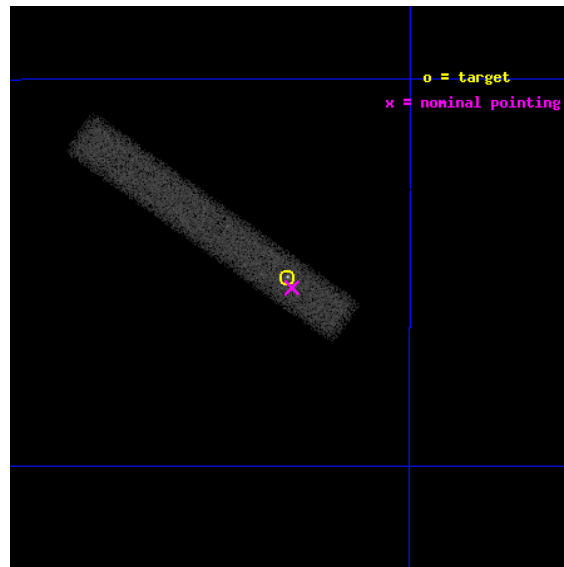
L2 Processing Date : Jun 8 2012

Contents

1	Front	2
2	OBI	3
2.1	OBI	3
2.1.1	Images	3
2.1.2	Bias	3
2.1.3	Parameters	4
2.1.4	Events	4
2.2	Compared Parameters	5
2.3	Aspect	6
2.4	Star Slots	9
2.4.1	Slot 3	9
2.4.2	Slot 4	10
2.4.3	Slot 5	11
2.4.4	Slot 6	12
2.4.5	Slot 7	13
2.5	FID Slots	14
2.5.1	Slot 0	14
2.5.2	Slot 1	15
2.5.3	Slot 2	16
A	Summary	17
A.1	Status	17
A.2	Comments	17

1 Front

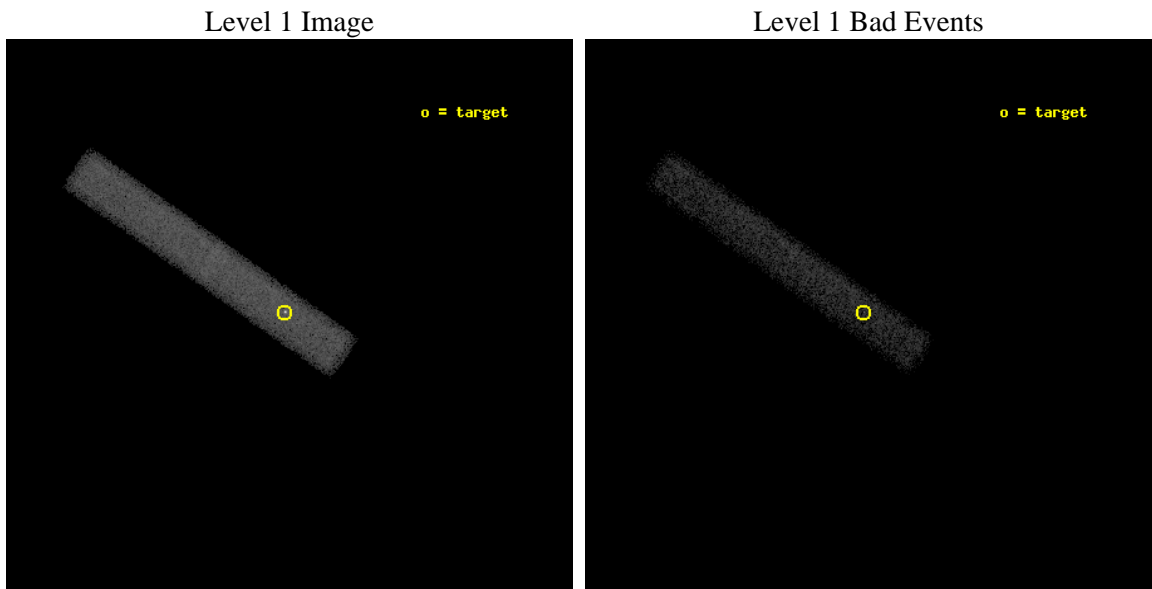
seq_num	400923	Sequence number
obs_id	9072	Observation id
title	Quasi-persistent neutron-star X-ray binaries in quiescence	Proposa
observer	Dr. Rudy Wijnands	Principal investigator
object	EXO 0748-676	Source name
dtcycle	0	
cycle	P	events from which exps? Prim/Second/Both
ra_targ	117.140833	Observer's specified target RA [deg]
dec_targ	-67.7524	Observer's specified target Dec [deg]
ra_nom	117.13576727645	Nominal RA [deg]
dec_nom	-67.756859606238	Nominal Dec [deg]
roll_nom	215.19814069956	Nominal Roll [deg]
revision	2	Processing version of data
ontime	30010.398211241	Sum of GTIs [s]
livetime	27217.847098894	Livetime [s]
ontime7	30010.398211241	Sum of GTIs [s]
l2events	30533	Number of level 2 events



2 OBI

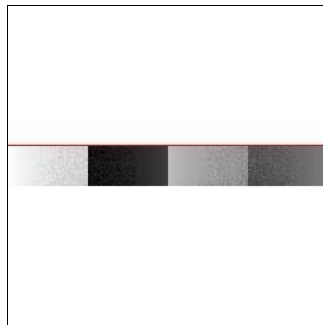
2.1 OBI

2.1.1 Images



2.1.2 Bias

Chip 7



2.1.3 Parameters

obi_num	0	Obi number	sched_exp_time	30000.000000	[s] Scheduled observation exposure time
ascdsver	8.4.5	Processing system revision	ontime	30010.398211241	Sum of GTIs [s]
caldsver	4.4.10	 	ontime7	30010.398211241	Sum of GTIs [s]
date	2012-06-08T20:16:14	Date and time of file creation	l1events	63431	Number of level 1 events
revision	2	Processing version of data			

2.1.4 Events

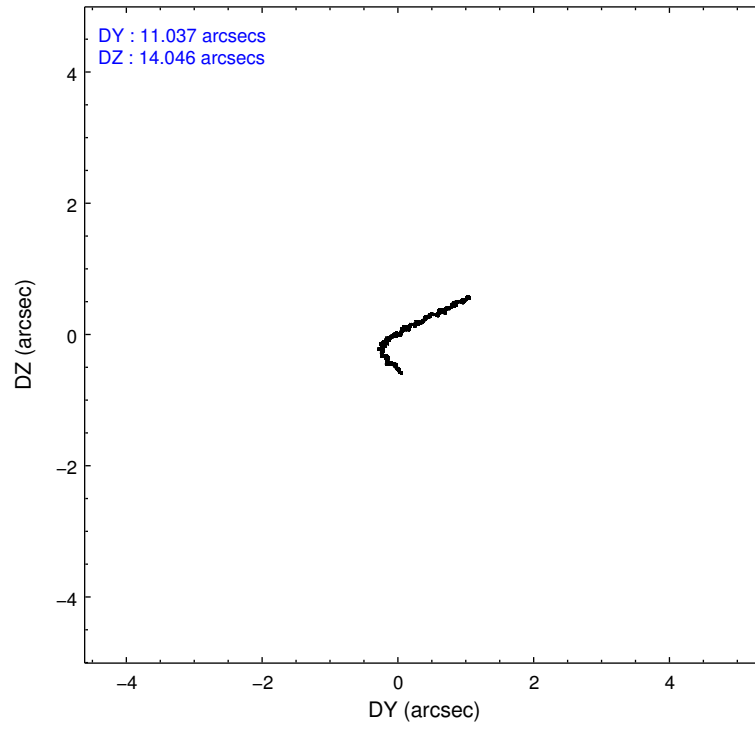
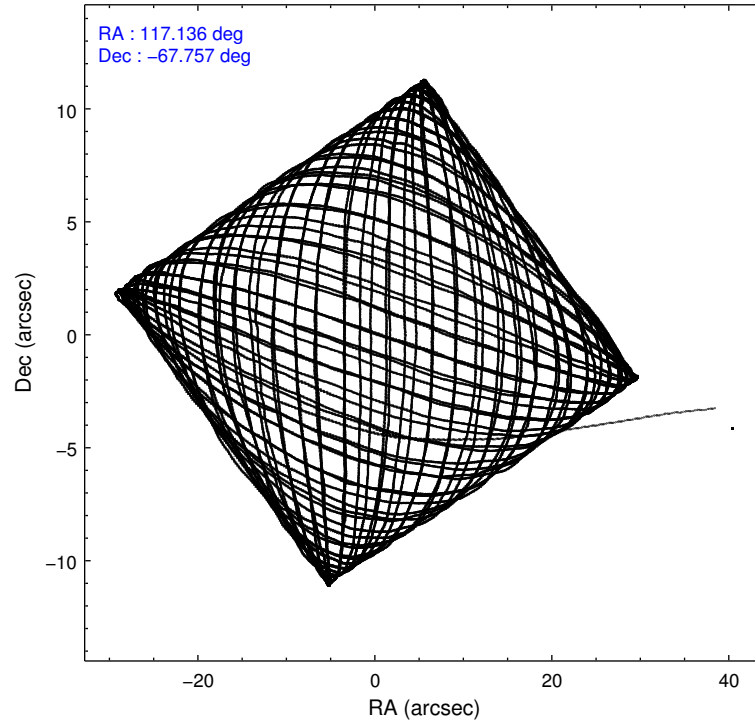
	ccd 7
level 1 events	63431
rejected events	31835
rejected %	50%

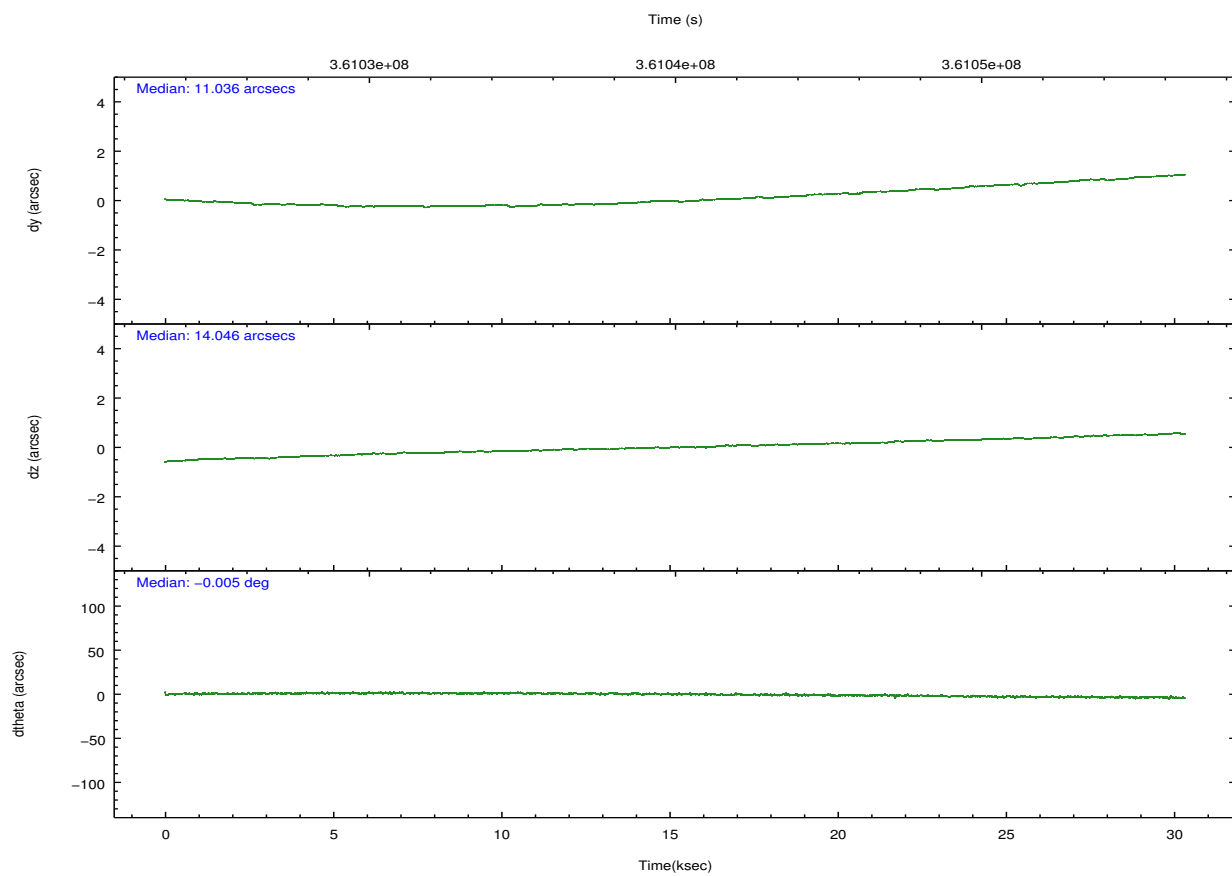
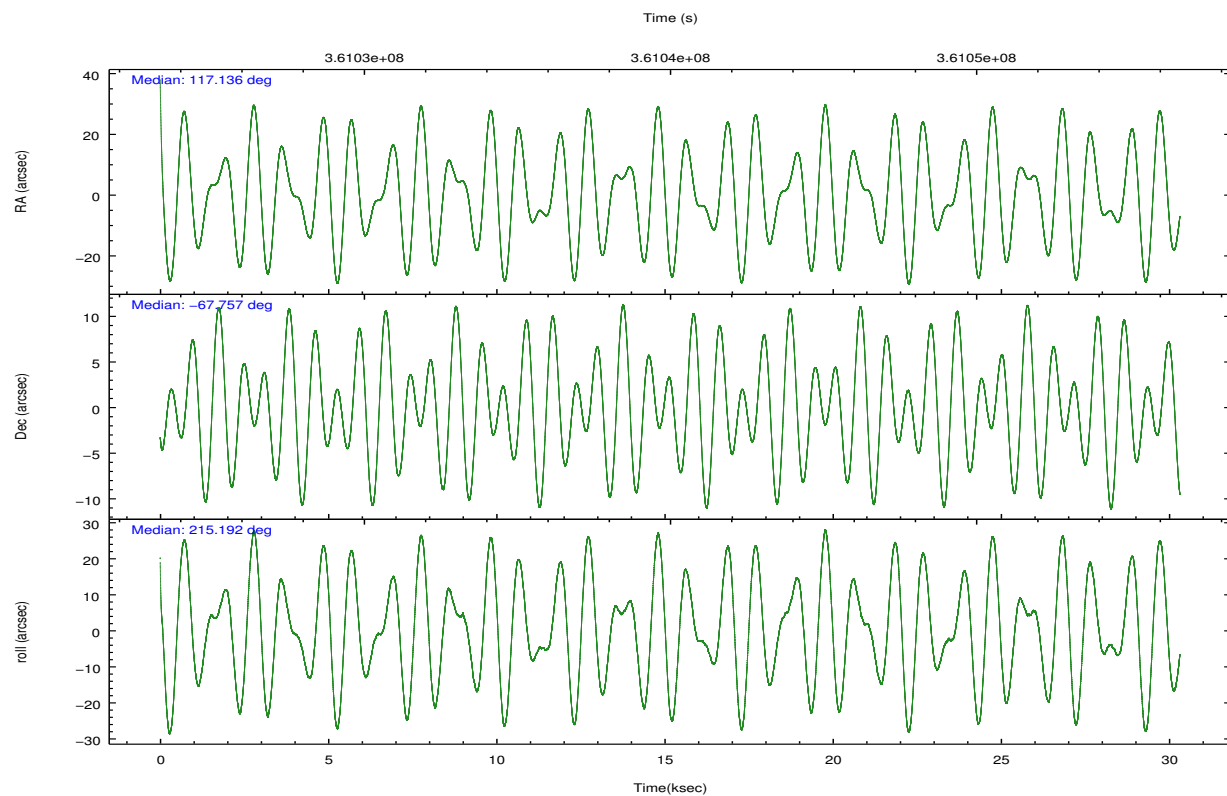
	ccd 7
grade 0 events	4053
	6%
grade 1 events	69
	0%
grade 2 events	6478
	10%
grade 3 events	3916
	6%
grade 4 events	3831
	6%
grade 5 events	5655
	8%
grade 6 events	13318
	20%
grade 7 events	26111
	41%

2.2 Compared Parameters

Parameter	Planned	Actual	Parameter	Planned	Actual
Instrument	ACIS	ACIS	Obspar format version number	7	7
Detector	ACIS-7	ACIS-7	Obspar file type	PREDICTED	ACTUAL
Grating	NONE	NONE	Obspar update status	NONE	UPDATED
Data mode	FAINT	FAINT	Number of optional ACIS chips dropped	0	0
Observation mode	POINTING	POINTING	On-chip summing requested	N	N
[deg] Pointing RA	117.165181	117.1357672764451	Subarray requested	CUSTOM	1/8
[deg] Pointing Dec	-67.731866	-67.75685960623824	Subarray start row	449	449
[deg] Pointing Roll	215.068741	215.1981406995577	Subarray row count	128	128
[mm] SIM focus pos	-0.684267	-0.6828225247311905	Alternating exposures requested	N	N
[mm] SIM defocus	0	0.001444936568705701	[s] Primary exposure time	0.000000	0.4
[mm] SIM translation stage pos	-190.132523	-190.1400660498719			
[mm] SIM translation stage offset	0	0.00754346686406393			
[s] Observation start time (MET)	361025139.184000	361023965.18674			
Observation start date	2009-06-10T12:44:33	2009-06-10T12:26:05			
[s] Observation end time (MET)	361055139.184000	361055797.58833			
Observation end date	2009-06-10T21:04:33	2009-06-10T21:16:37			
Read mode	TIMED	TIMED			

2.3 Aspect



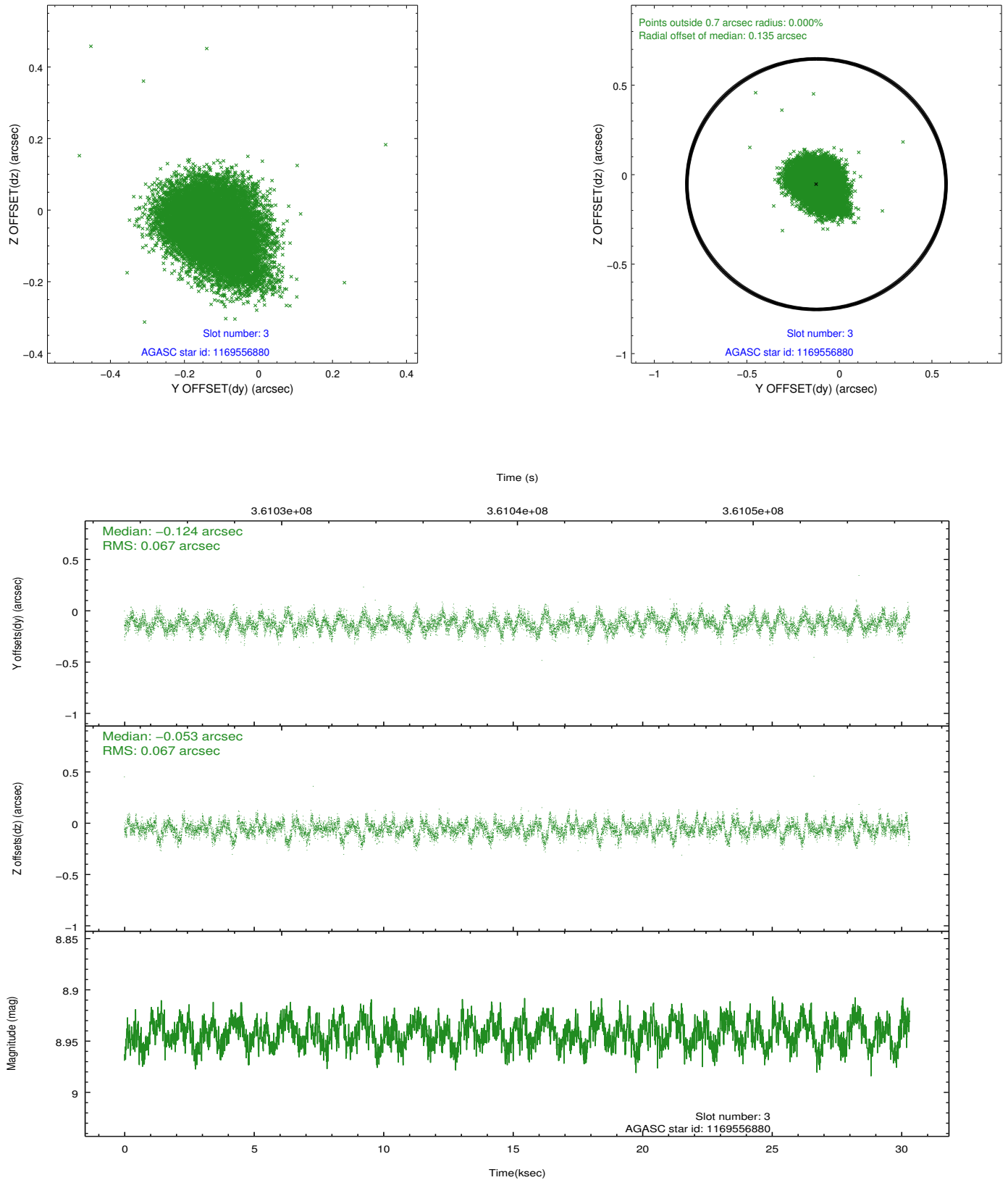


Slot Statistics

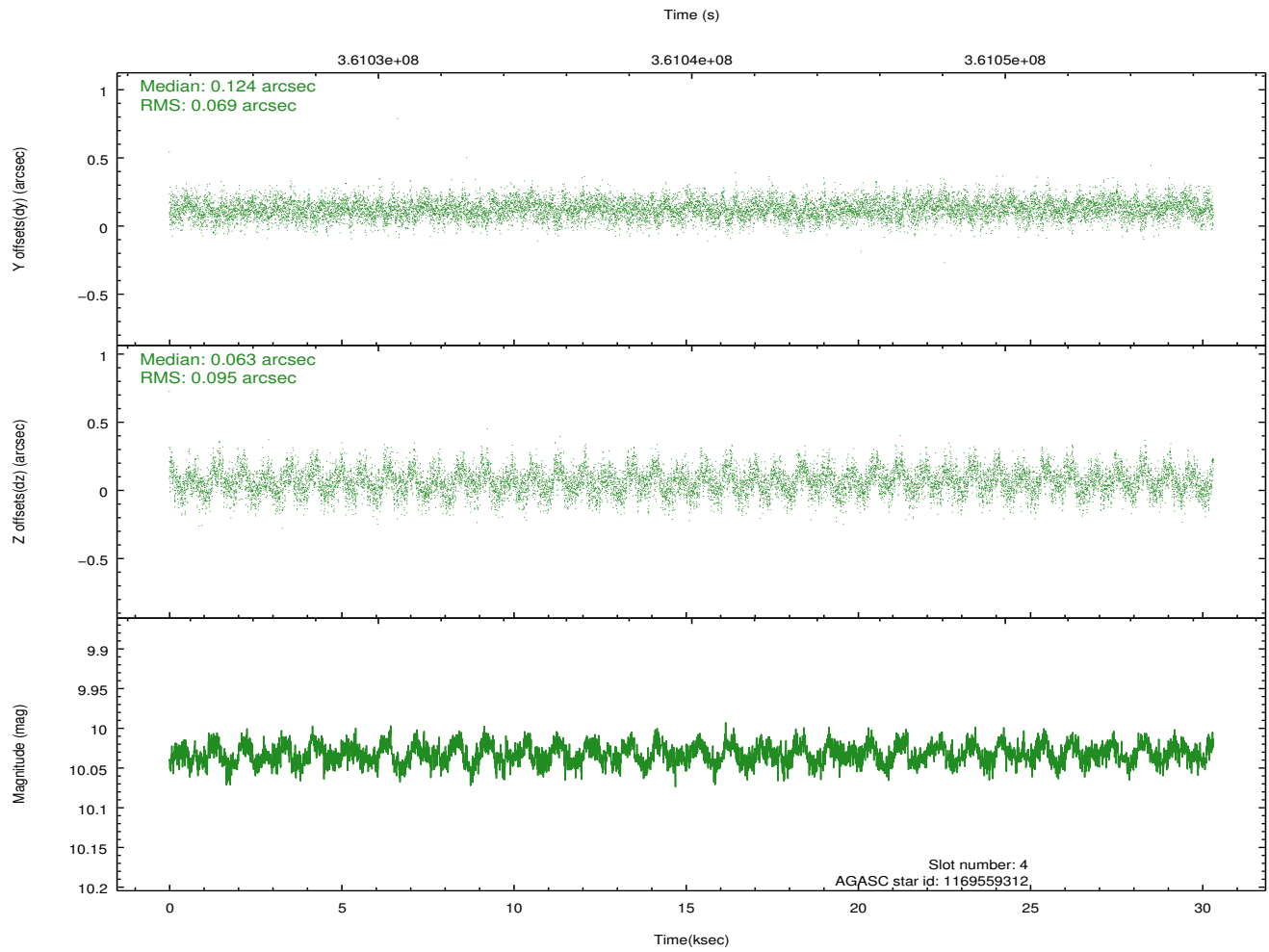
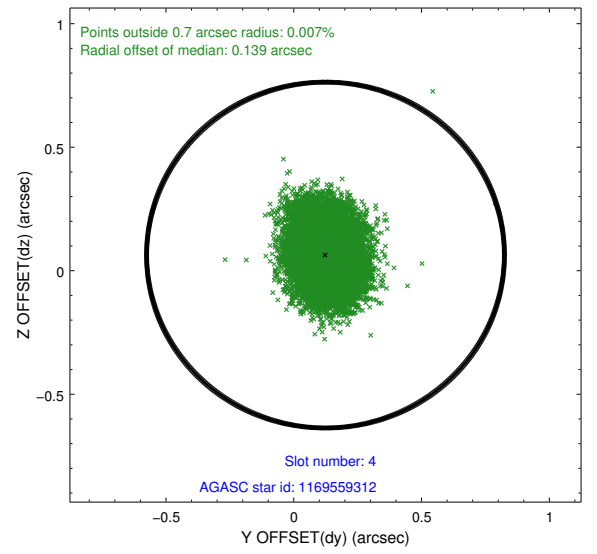
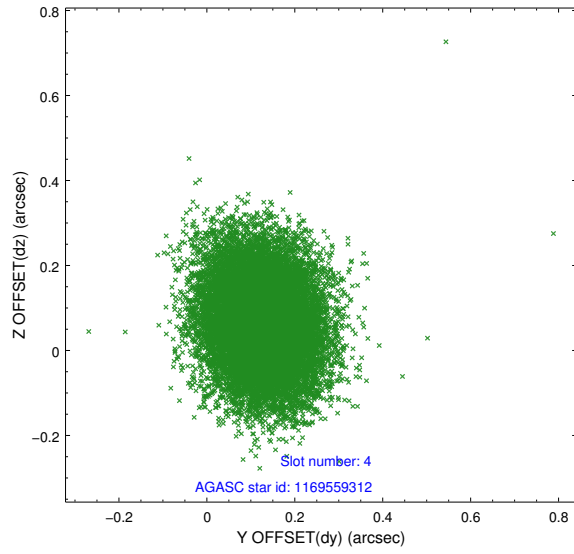
slot	status	id	mag	n_pts	med_dy	med_dz	dr1	dr2	ra	dec	mean_y	mean_z
0	FID	ACIS-S-1	6.99	7394	-0.021	-0.003	0.008	0.015	0.000000	0.000000	931.94	-1731.05
1	FID	ACIS-S-4	6.99	7395	0.057	0.004	0.009	0.014	0.000000	0.000000	2149.46	173.04
2	FID	ACIS-S-6	7.13	7394	-0.061	0.010	0.009	0.017	0.000000	0.000000	397.93	810.49
3	GUIDE	1169556880	8.94	14784	-0.124	-0.053	0.100	0.163	118.476472	-67.455164	-2042.89	240.31
4	GUIDE	1169559312	10.03	14757	0.124	0.063	0.124	0.205	117.264973	-67.339053	-925.07	-1077.18
5	GUIDE	1203245384	8.54	14786	-0.102	-0.081	0.082	0.130	117.096059	-68.354351	1362.47	1781.73
6	GUIDE	1203254824	9.56	14763	0.059	-0.052	0.105	0.172	115.174013	-67.525261	1840.90	-2146.20
7	GUIDE	1203252136	9.44	14771	0.041	0.124	0.112	0.177	119.065261	-67.747674	-2064.18	1567.28

2.4 Star Slots

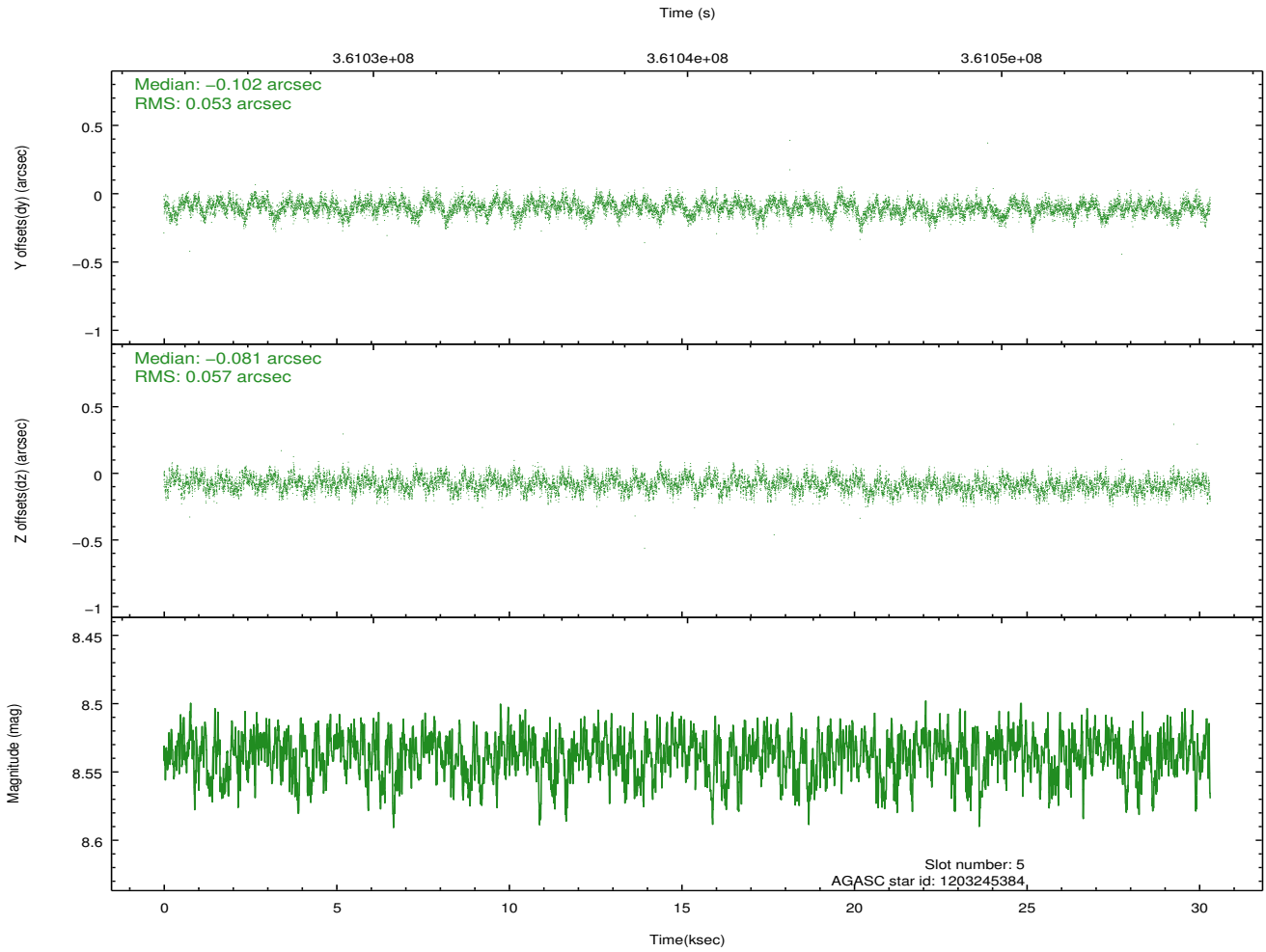
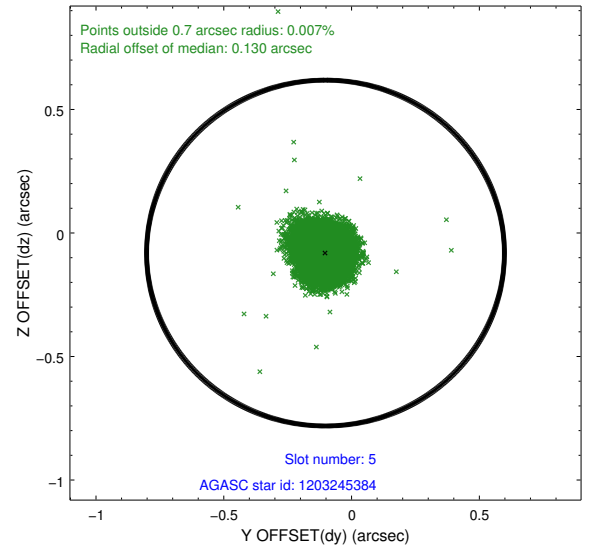
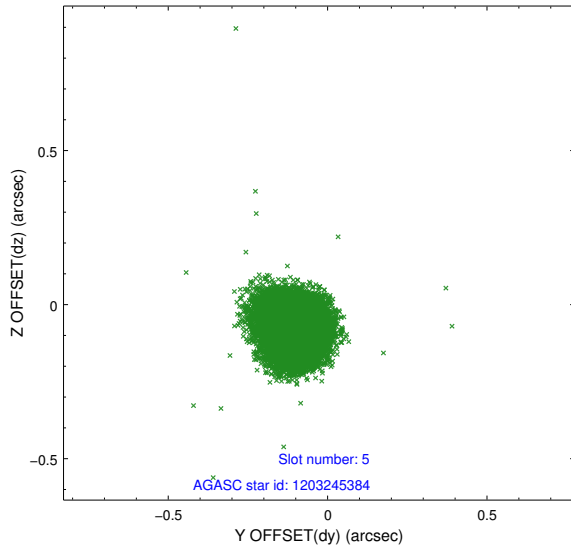
2.4.1 Slot 3



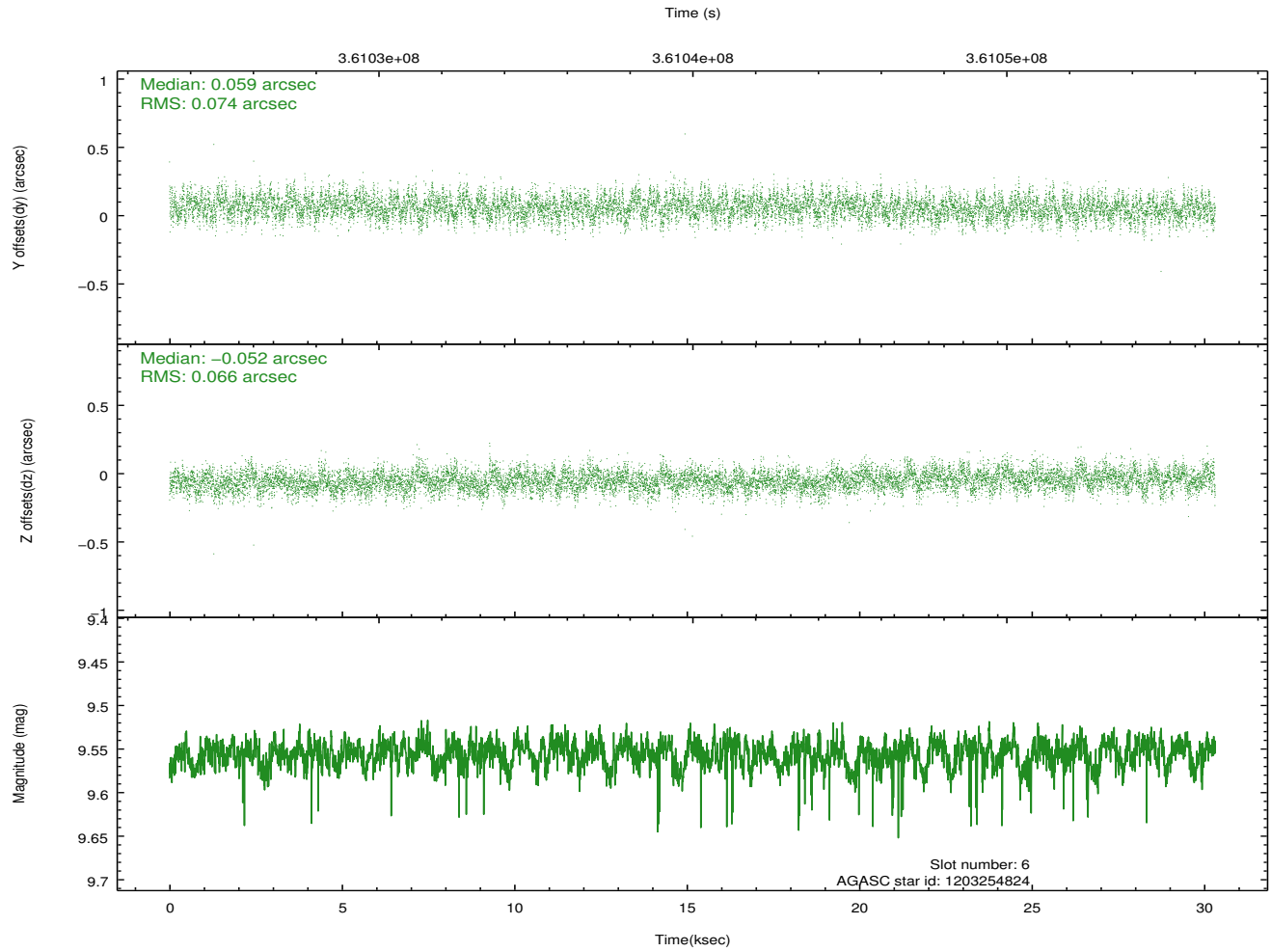
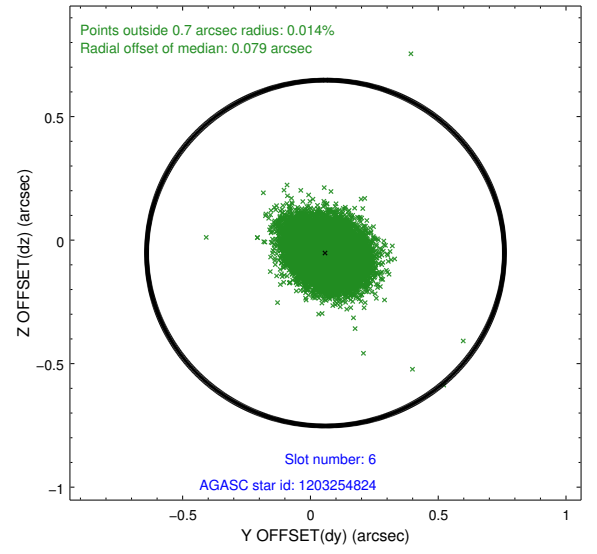
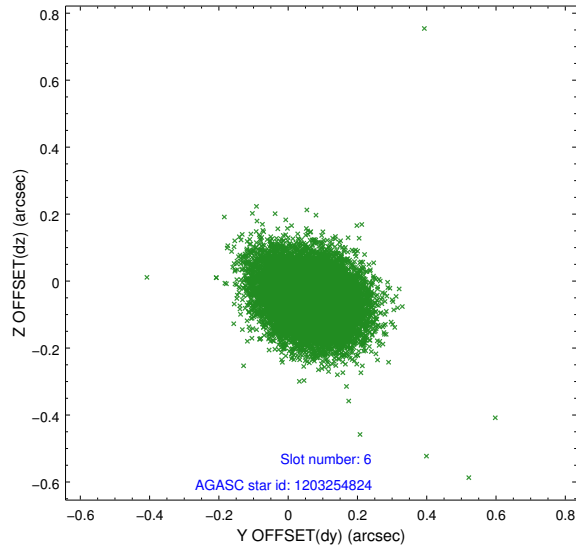
2.4.2 Slot 4



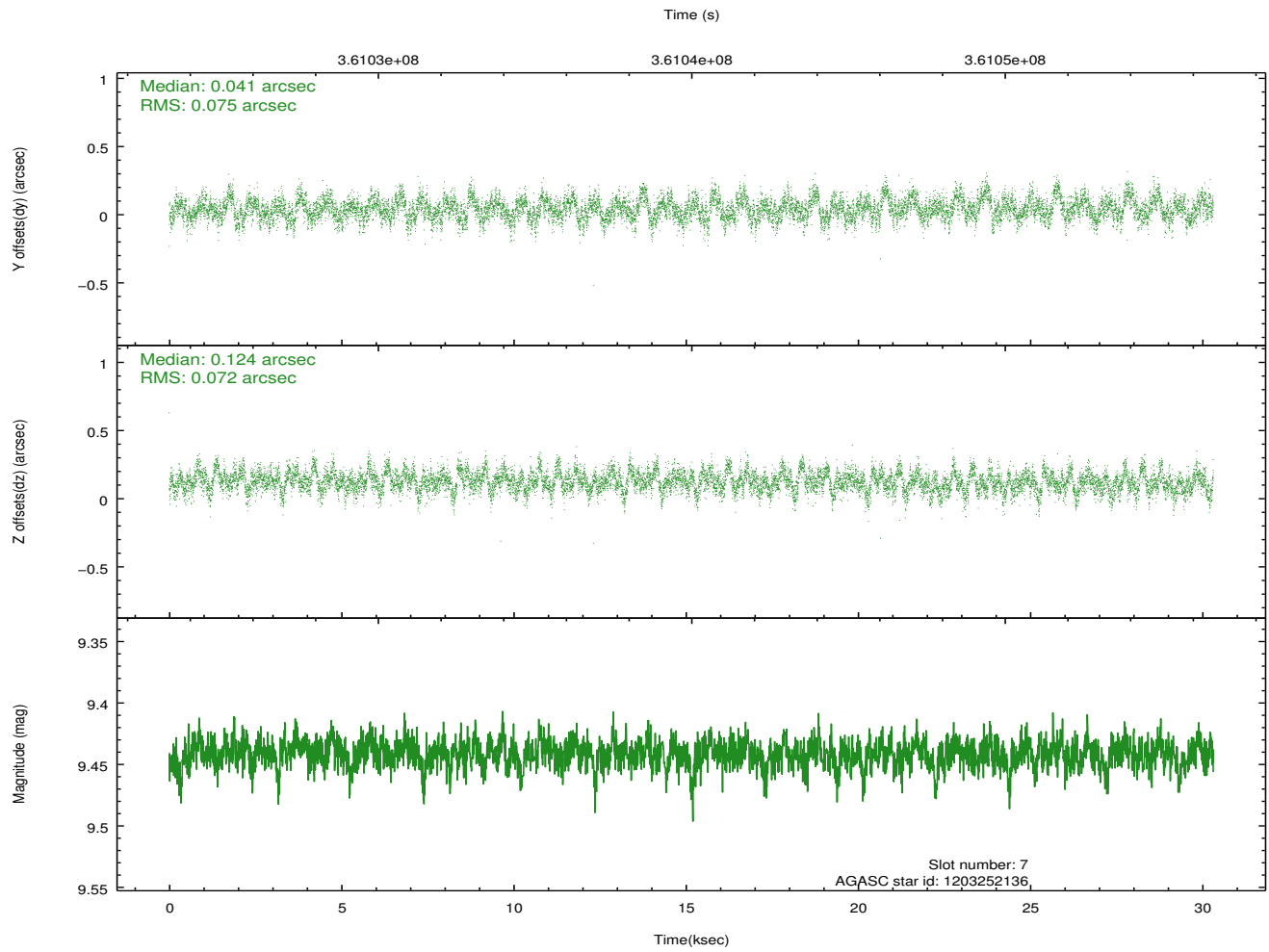
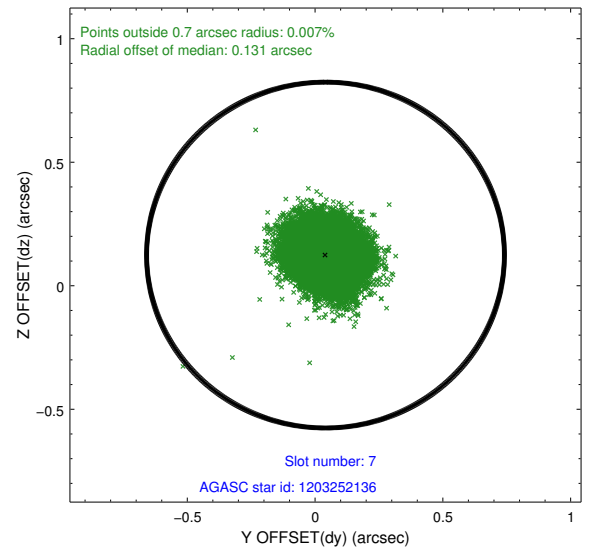
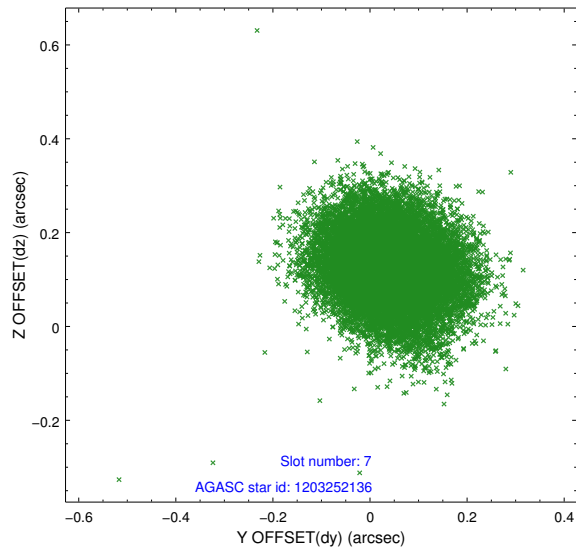
2.4.3 Slot 5



2.4.4 Slot 6

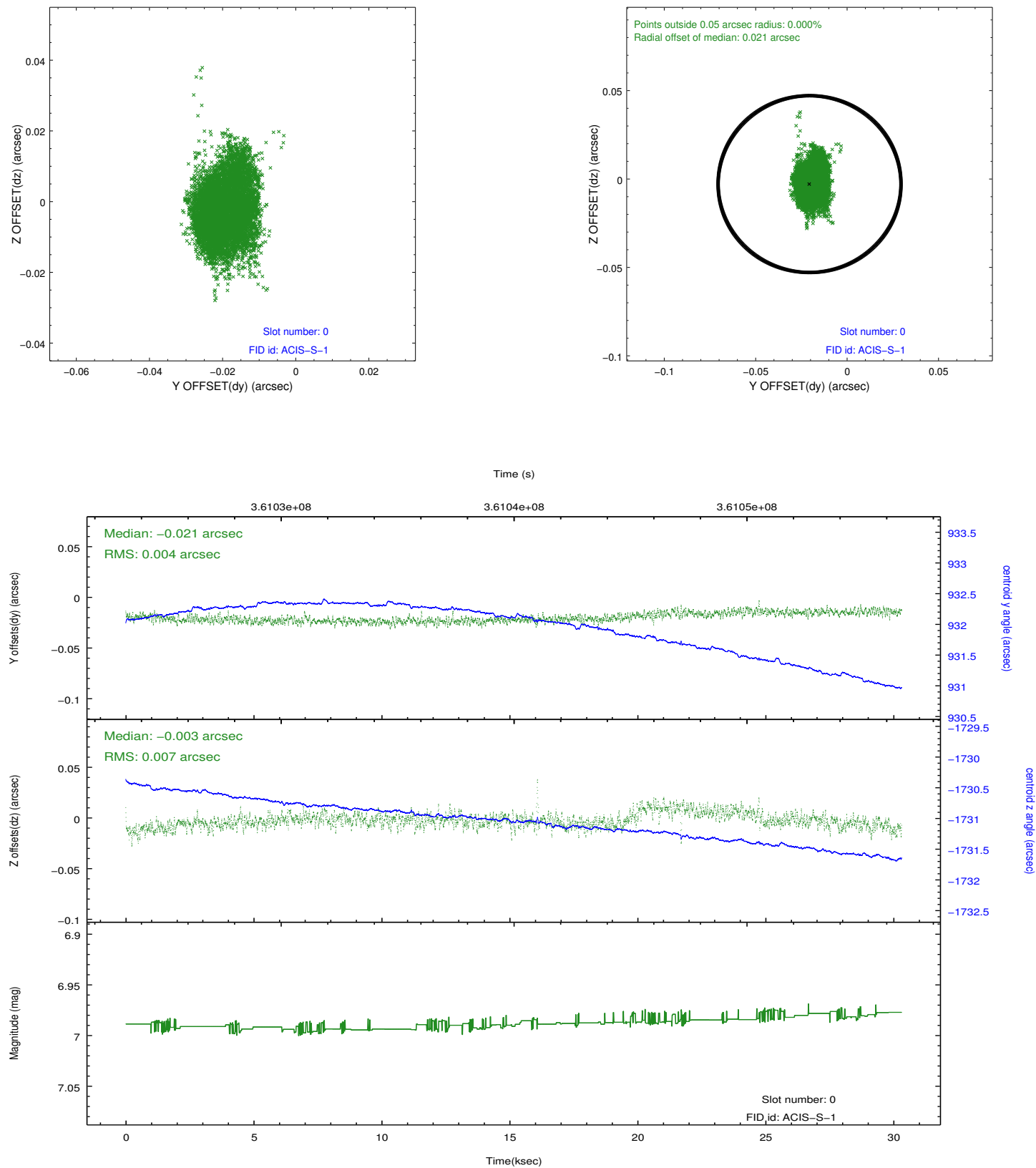


2.4.5 Slot 7

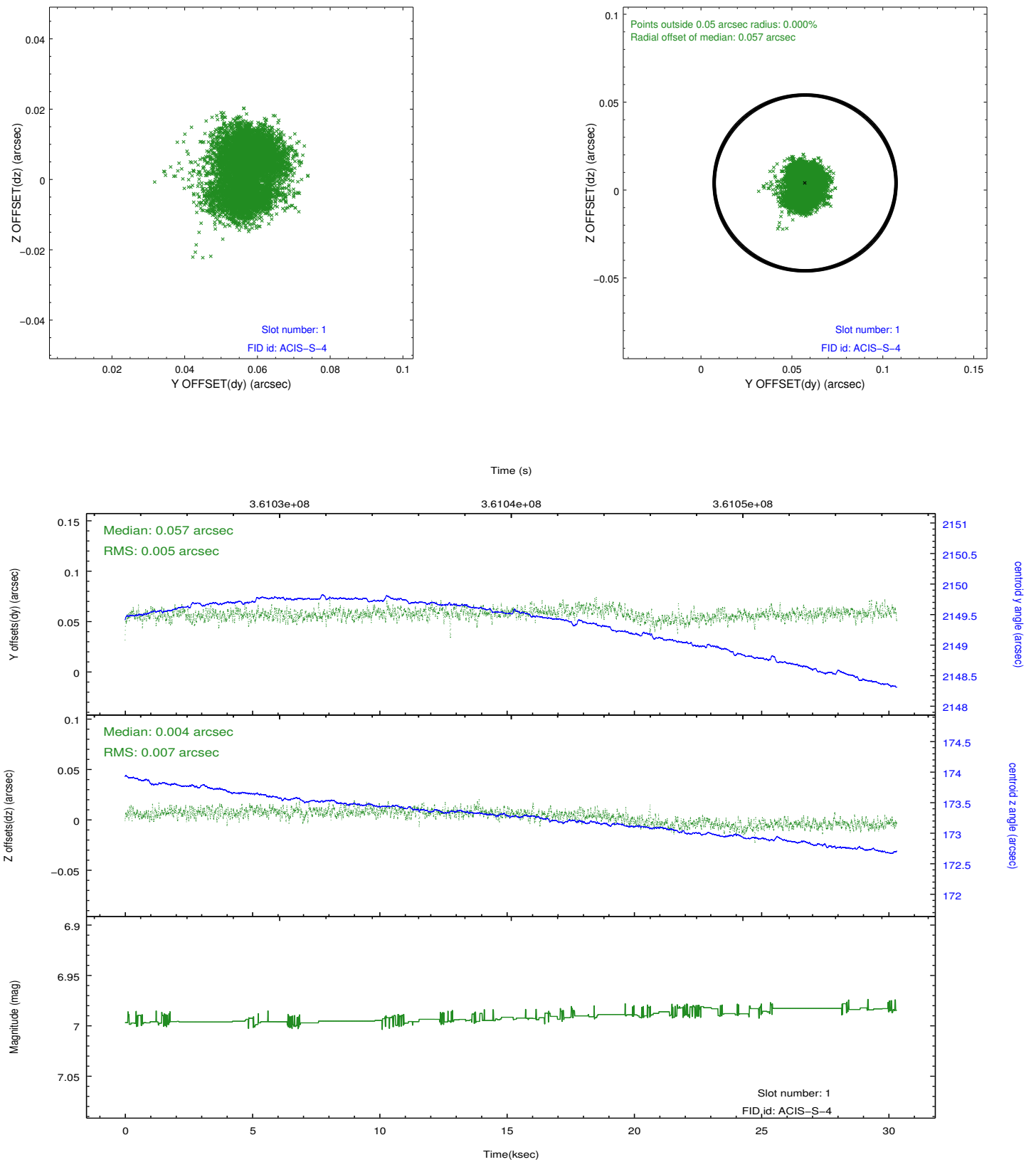


2.5 FID Slots

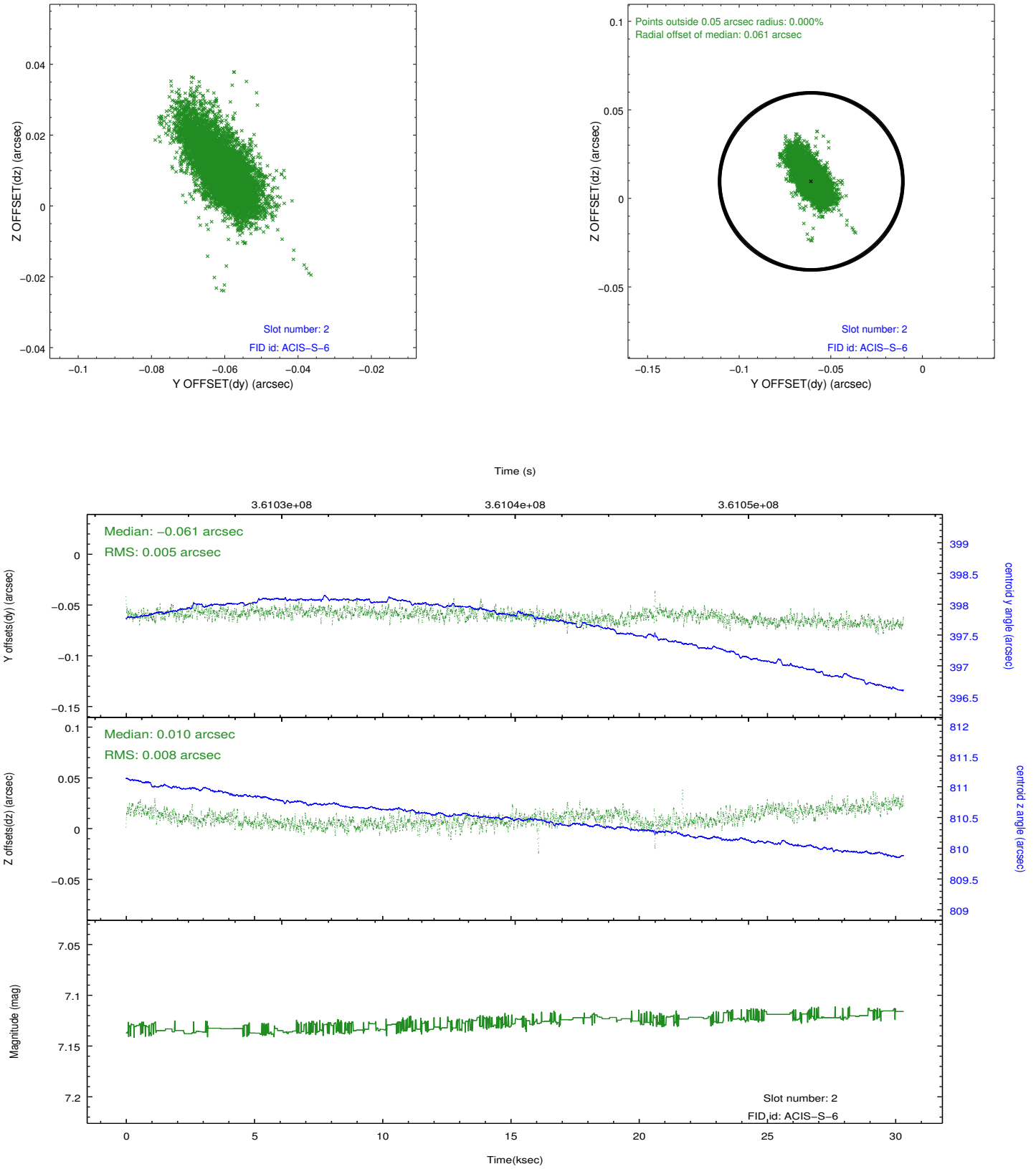
2.5.1 Slot 0



2.5.2 Slot 1



2.5.3 Slot 2



A Summary

A.1 Status

V&V Scientist	Beth Sundheim
V&V Date (YYYY-MM-DD)	2012.06.12
V&V Edition	1
V&V Disposition and Status	OK
V&V Charge Time	30.0103982

A.2 Comments