

V&V Reference Report

L2 ASCDS Version : 8.4.4

Observation 9062 - L2 Version 2
Chandra X-Ray Center

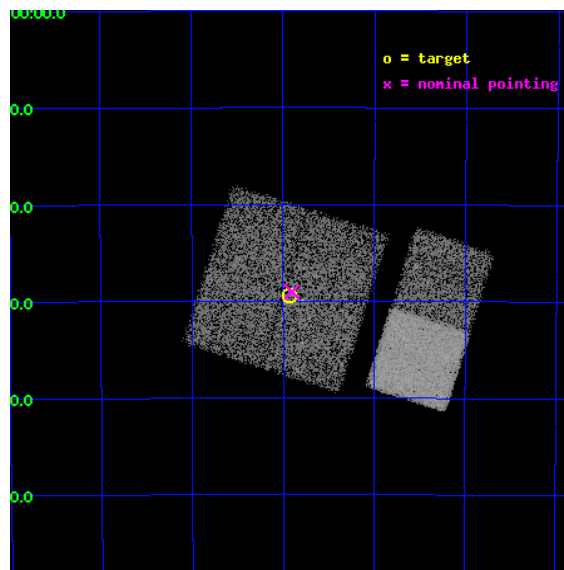
L2 Processing Date : May 7 2012

Contents

1	Front	2
2	OBI	3
2.1	OBI	3
2.1.1	Images	3
2.1.2	Bias	3
2.1.3	Parameters	4
2.1.4	Events	4
2.2	Compared Parameters	5
2.3	Aspect	6
2.4	Star Slots	9
2.4.1	Slot 3	9
2.4.2	Slot 4	10
2.4.3	Slot 5	11
2.4.4	Slot 6	12
2.4.5	Slot 7	13
2.5	FID Slots	14
2.5.1	Slot 0	14
2.5.2	Slot 1	15
2.5.3	Slot 2	16
A	Summary	17
A.1	Status	17
A.2	Comments	17

1 Front

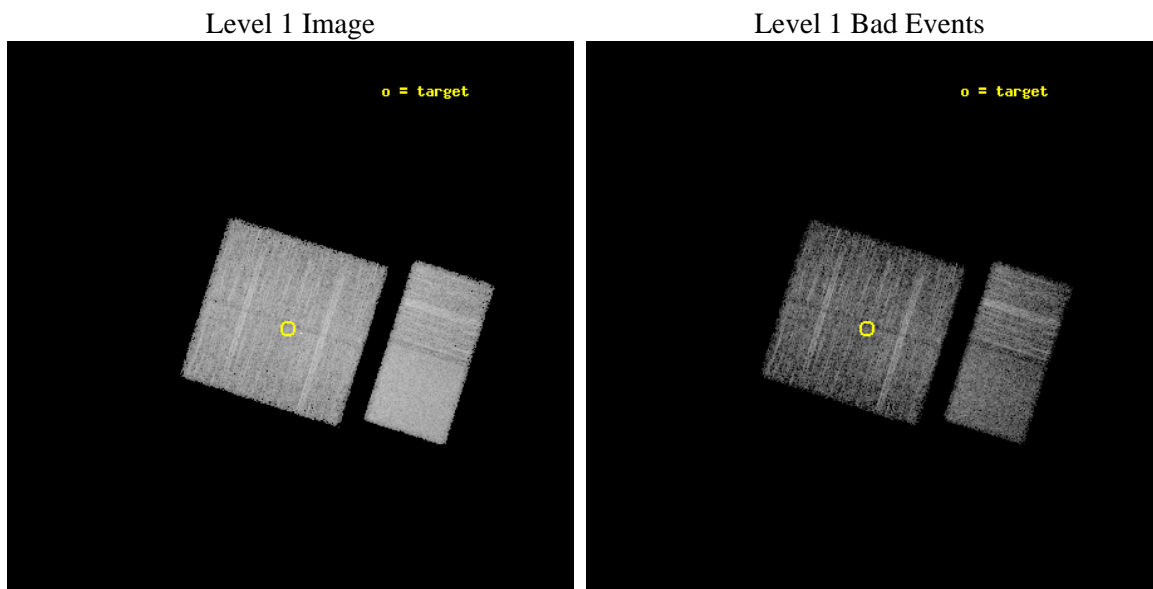
seq_num	400913	Sequence number
obs_id	9062	Observation id
title	Localization and Spectra of INTEGRAL-Selected Sources in the Galactic Plane	Proposal title
observer	Dr. John Tomsick	Principal investigator
object	IGR J15529-5029	Source name
dtcycle	0	
cycle	P	events from which exps? Prim/Second/Both
ra_targ	238.233333	Observer's specified target RA [deg]
dec_targ	-50.49	Observer's specified target Dec [deg]
ra_nom	238.22606435245	Nominal RA [deg]
dec_nom	-50.483947807616	Nominal Dec [deg]
roll_nom	107.6281646048	Nominal Roll [deg]
revision	2	Processing version of data
ontime	5135.9999809265	Sum of GTIs [s]
livetime	5070.9648566401	Livetime [s]
ontime0	5135.9999809265	Sum of GTIs [s]
ontime1	5135.9999809265	Sum of GTIs [s]
ontime2	5135.9999809265	Sum of GTIs [s]
ontime3	5135.9999809265	Sum of GTIs [s]
ontime6	5135.9999809265	Sum of GTIs [s]
ontime7	5135.9999809265	Sum of GTIs [s]
l2events	53912	Number of level 2 events



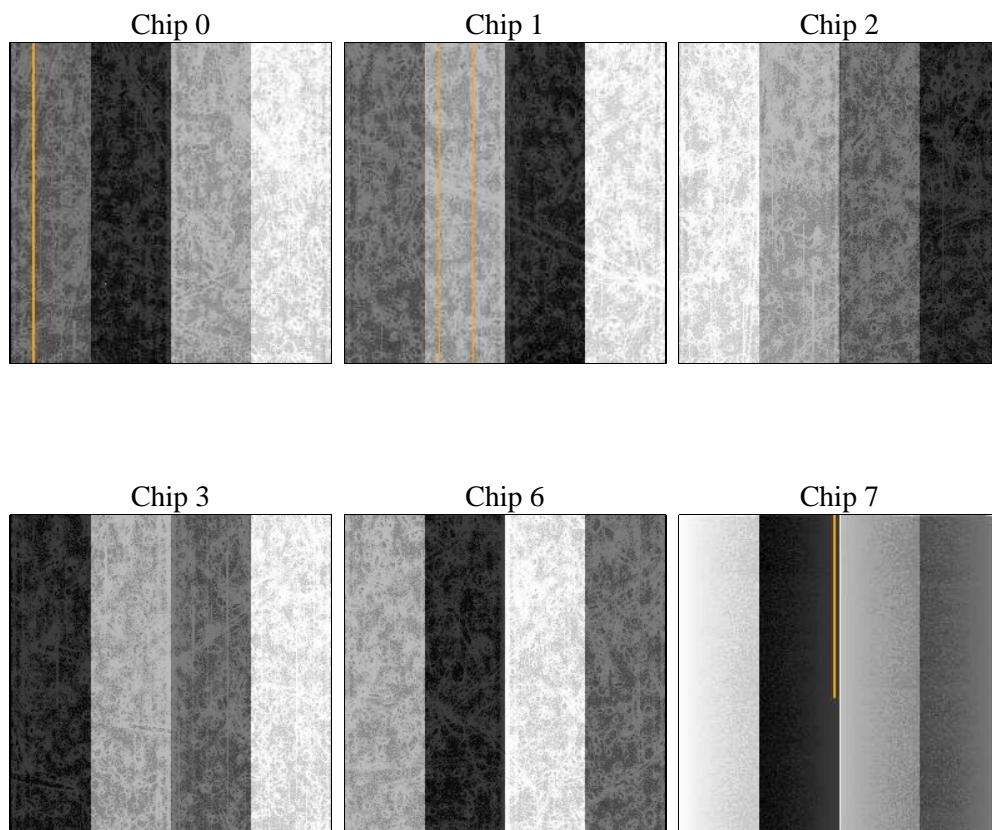
2 OBI

2.1 OBI

2.1.1 Images



2.1.2 Bias



2.1.3 Parameters

obi_num	0	Obi number	sched_exp_time	5000.000000	[s] Scheduled observation exposure time
ascdsver	8.4.4	Processing system revision	ontime	5135.9999809265	Sum of GTIs [s]
caldsver	4.4.9	 	ontime0	5135.9999809265	Sum of GTIs [s]
date	2012-05-07T16:55:50	Date and time of file creation	ontime1	5135.9999809265	Sum of GTIs [s]
revision	2	Processing version of data	ontime2	5135.9999809265	Sum of GTIs [s]
			ontime3	5135.9999809265	Sum of GTIs [s]
			ontime6	5135.9999809265	Sum of GTIs [s]
			ontime7	5135.9999809265	Sum of GTIs [s]
			l1events	385553	Number of level 1 events

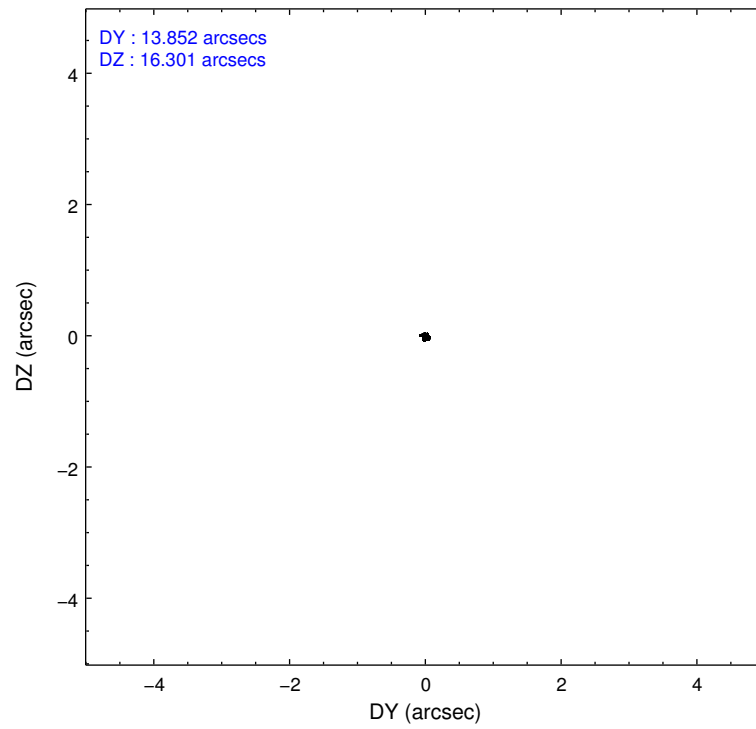
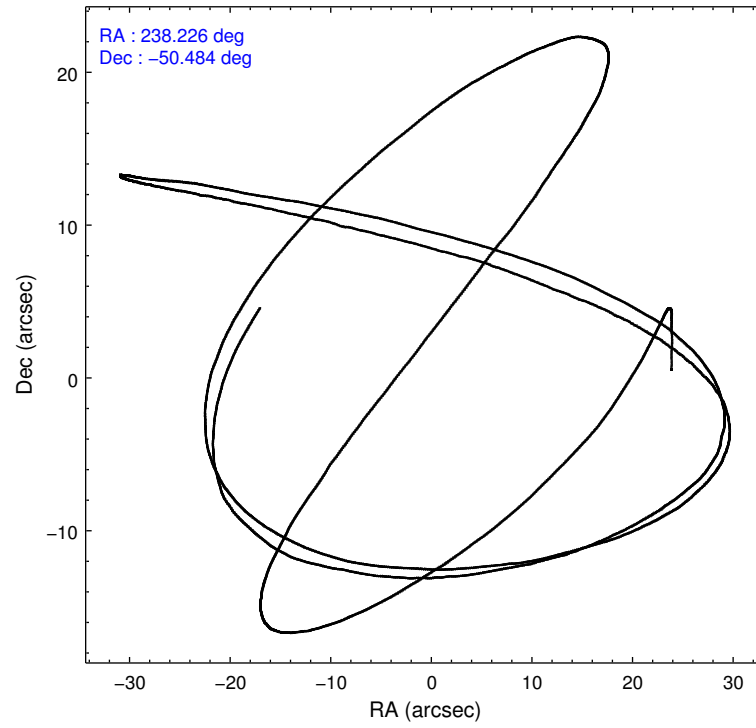
2.1.4 Events

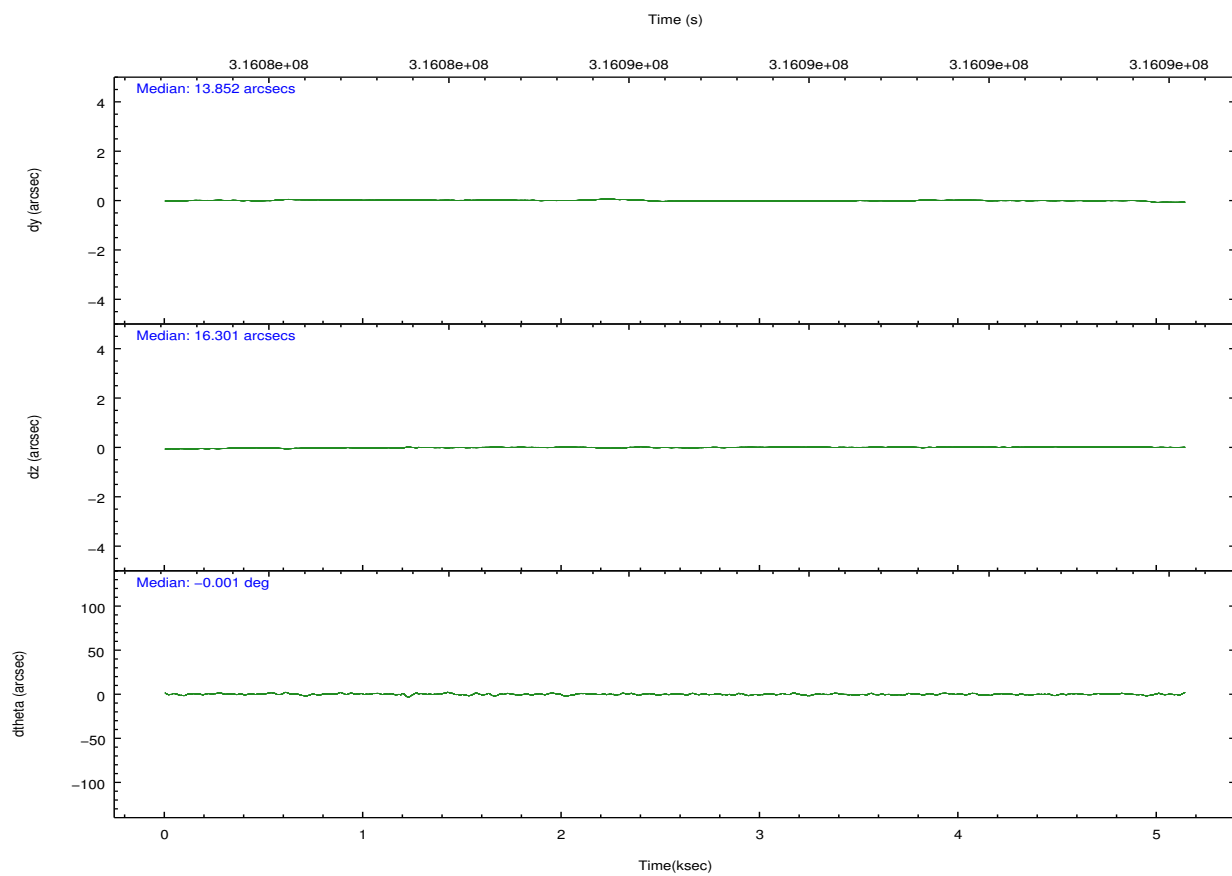
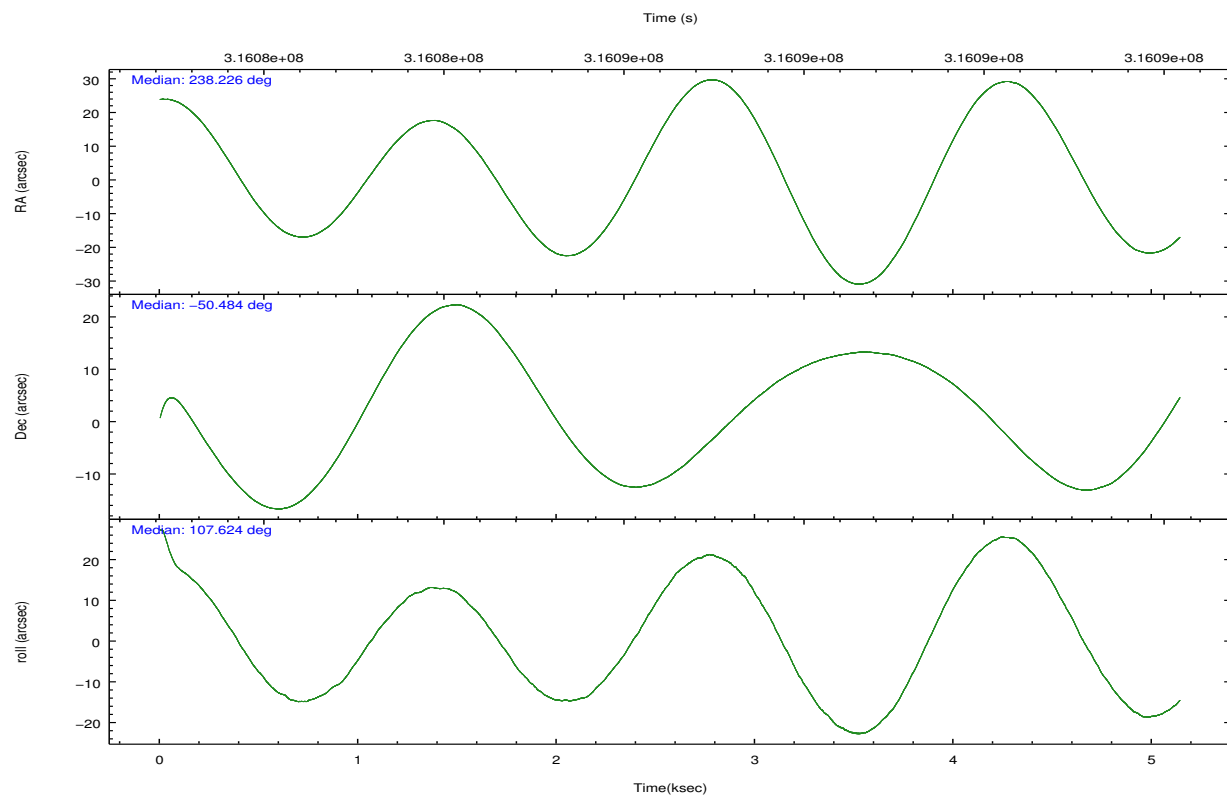
	ccd 0	ccd 1	ccd 2	ccd 3	ccd 6	ccd 7		ccd 0	ccd 1	ccd 2	ccd 3	ccd 6	ccd 7
level 1 events	56924	55572	61814	61313	65668	84262	grade 0 events	3260	3186	3494	3578	3152	2978
rejected events	50952	49200	55740	54961	59574	56591		5%	5%	5%	5%	4%	3%
rejected %	89%	88%	90%	89%	90%	67%	grade 1 events	48	30	38	37	35	95
								0%	0%	0%	0%	0%	0%
							grade 2 events	1681	1853	1615	1496	1691	7179
								2%	3%	2%	2%	2%	8%
							grade 3 events	725	734	707	755	639	2912
								1%	1%	1%	1%	0%	3%
							grade 4 events	612	779	664	768	752	2925
								1%	1%	1%	1%	1%	3%
							grade 5 events	2505	2669	2552	2940	3024	8109
								4%	4%	4%	4%	4%	9%
							grade 6 events	1294	1520	1234	1344	1559	19222
								2%	2%	1%	2%	2%	22%
							grade 7 events	46799	44801	51510	50395	54816	40842
								82%	80%	83%	82%	83%	48%

2.2 Compared Parameters

Parameter	Planned	Actual	Parameter	Planned	Actual
Instrument	ACIS	ACIS	Obspar format version number	7	7
Detector	ACIS-012367	ACIS-012367	Obspar file type	PREDICTED	ACTUAL
Grating	NONE	NONE	Obspar update status	NONE	UPDATED
Data mode	FAINT	FAINT	CCD I0 on	Y	Y
Observation mode	POINTING	POINTING	CCD I1 on	Y	Y
[deg] Pointing RA	238.258108	238.2260643524519	CCD I2 on	Y	Y
[deg] Pointing Dec	-50.501813	-50.48394780761565	CCD I3 on	Y	Y
[deg] Pointing Roll	107.444178	107.6281646048014	CCD S0 on	N	N
[mm] SIM focus pos	-0.782348	-0.7809083437167272	CCD S1 on	N	N
[mm] SIM defocus	0	0.001439871863259334	CCD S2 on	O1	Y
[mm] SIM translation stage pos	-233.592463	-233.5874344608287	CCD S3 on	O2	Y
[mm] SIM translation stage offset	0	-0.005018542100998502	CCD S4 on	N	N
[s] Observation start time (MET)	316083825.184000	316082092.51698	CCD S5 on	N	N
Observation start date	2008-01-07T09:02:40	2008-01-07T08:34:52	Number of optional ACIS chips dropped	0	0
[s] Observation end time (MET)	316088825.184000	316089630.36735	On-chip summing requested	N	N
Observation end date	2008-01-07T10:26:00	2008-01-07T10:40:30	Subarray requested	NONE	NONE
Read mode	TIMED	TIMED	Alternating exposures requested	N	N
			[s] Primary exposure time	0.000000	3.2

2.3 Aspect



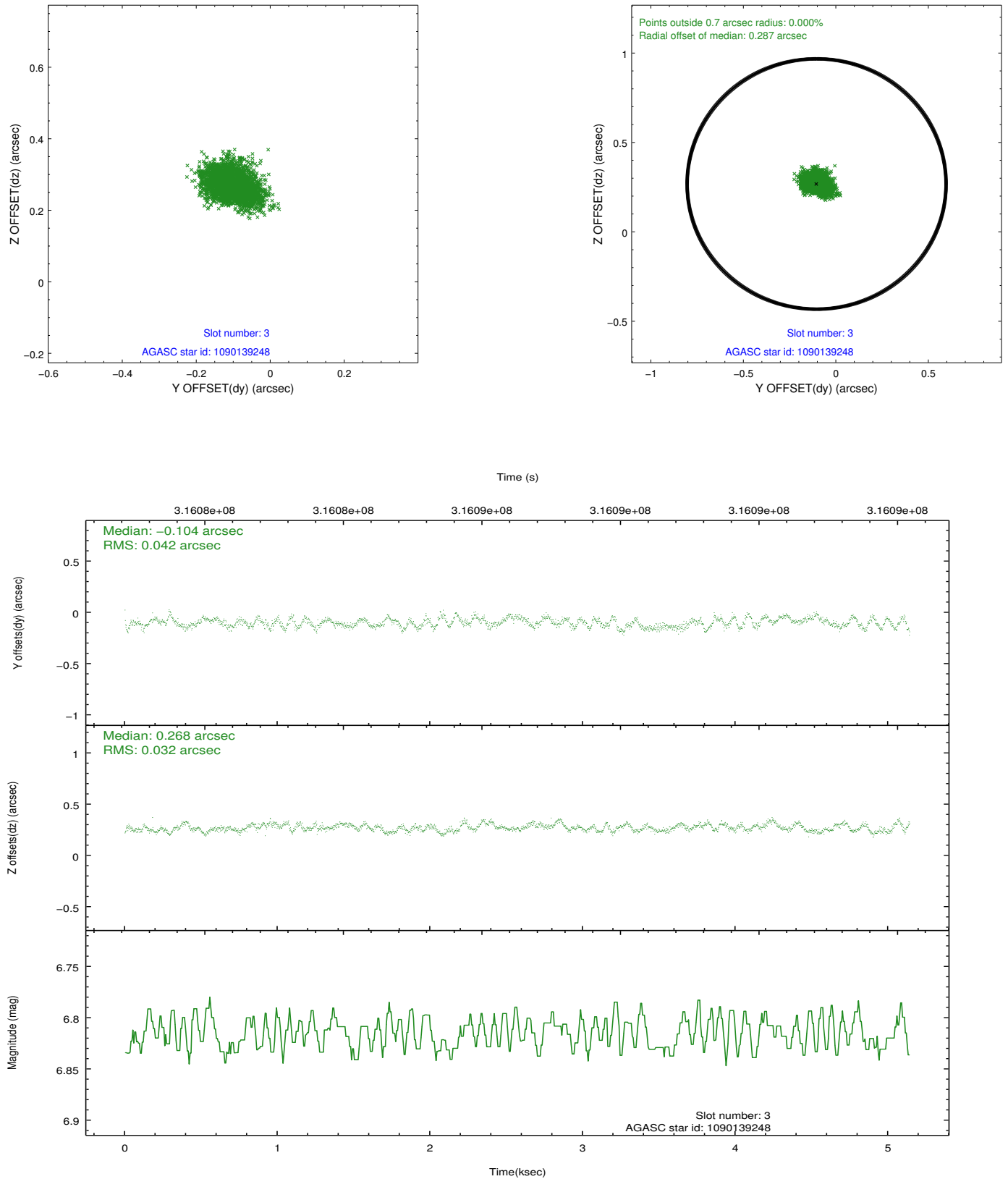


Slot Statistics

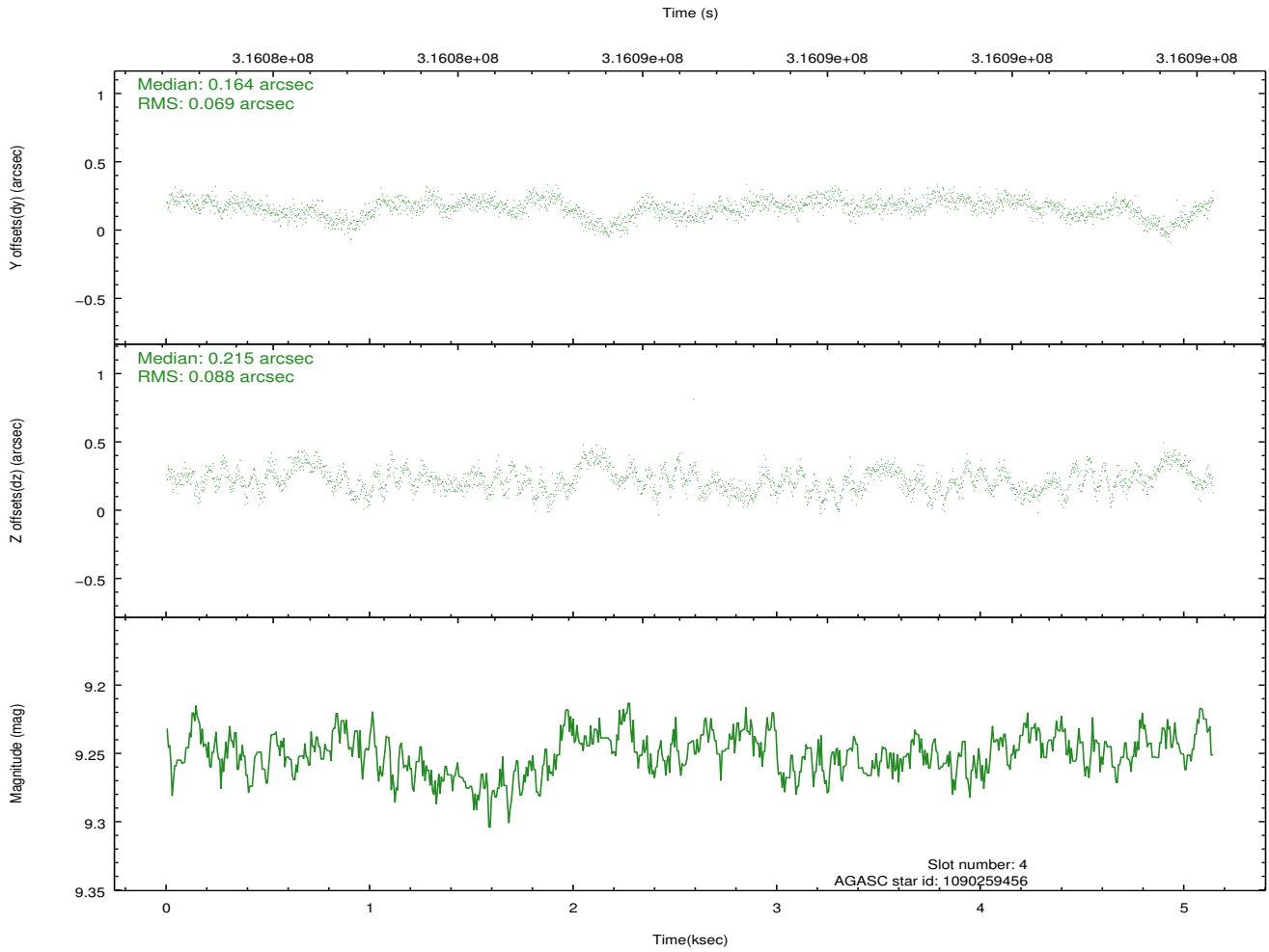
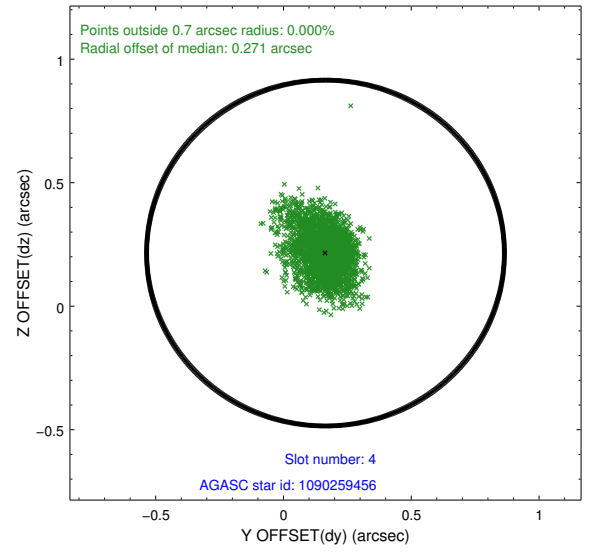
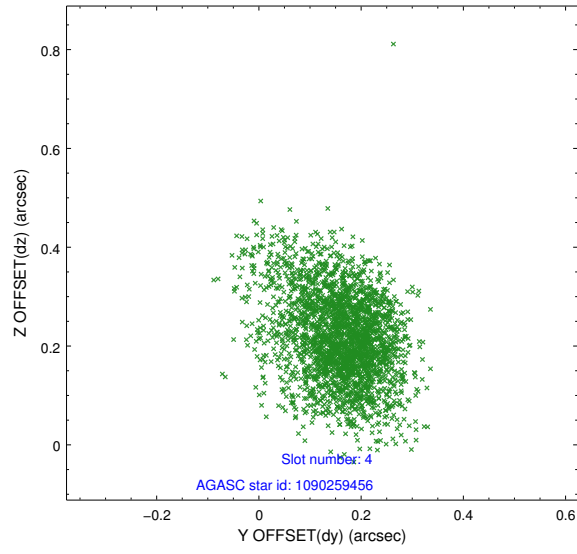
slot	status	id	mag	n_pts	med_dy	med_dz	dr1	dr2	ra	dec	mean_y	mean_z
0	FID	ACIS-I-1	7.22	1254	-0.089	-0.068	0.006	0.012	0.000000	0.000000	925.54	-840.01
1	FID	ACIS-I-4	7.15	1254	0.054	0.103	0.008	0.014	0.000000	0.000000	2146.40	1059.36
2	FID	ACIS-I-6	7.23	1255	-0.061	0.030	0.007	0.013	0.000000	0.000000	393.02	1702.83
3	GUIDE	1090139248	6.81	2509	-0.104	0.268	0.057	0.088	238.852335	-49.978137	1382.99	-1875.46
4	GUIDE	1090259456	9.25	2506	0.164	0.215	0.116	0.200	239.177370	-50.466024	-517.87	-2045.19
5	GUIDE	1090651704	8.30	2508	0.199	-0.118	0.070	0.114	238.027443	-51.139587	-2032.82	1184.21
6	GUIDE	1090129192	8.30	2506	-0.220	-0.118	0.063	0.100	237.368144	-50.018123	2267.75	1445.88
7	GUIDE	1090127672	8.78	2508	-0.034	-0.253	0.073	0.115	237.949836	-50.045886	1781.22	188.45

2.4 Star Slots

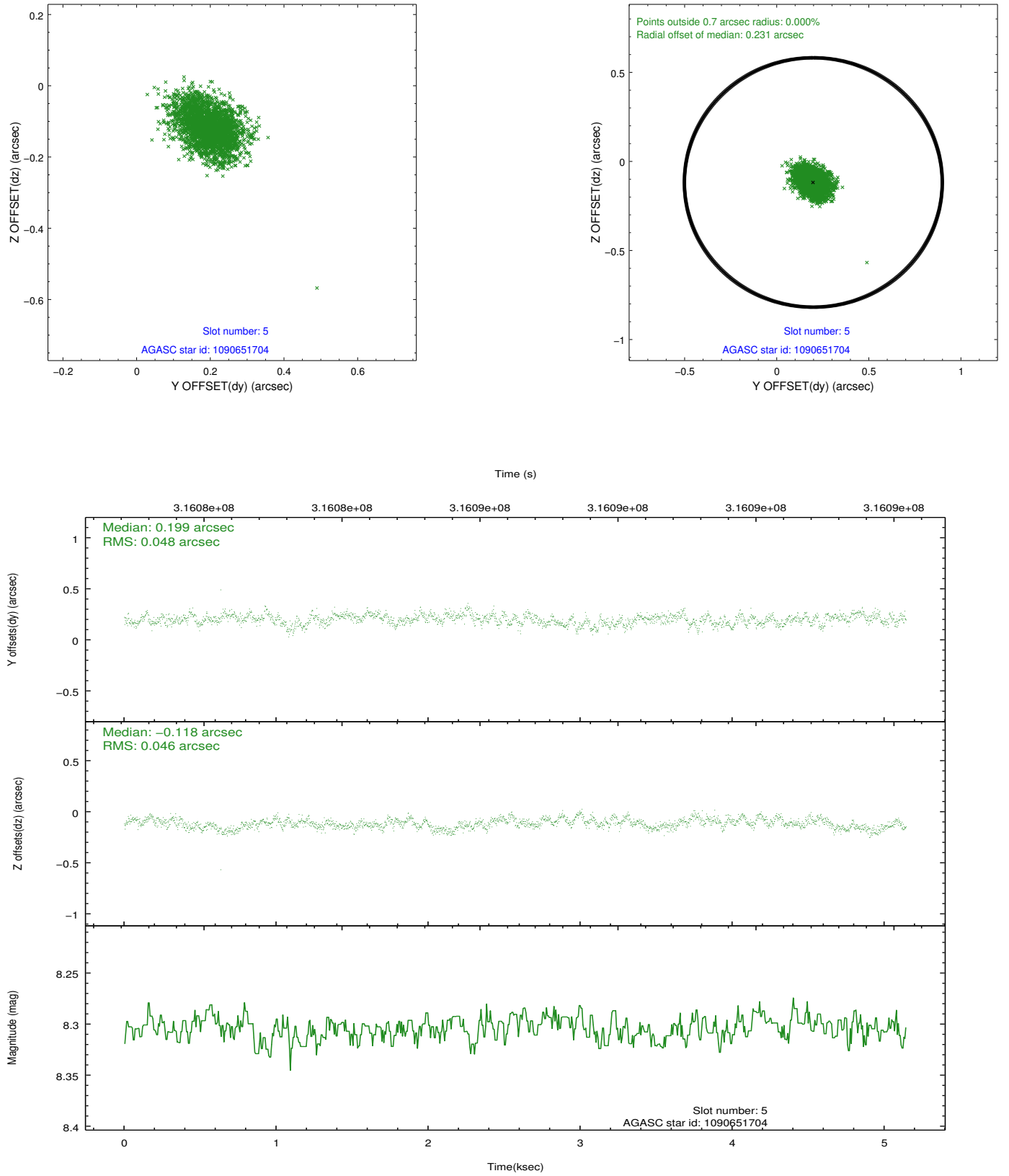
2.4.1 Slot 3



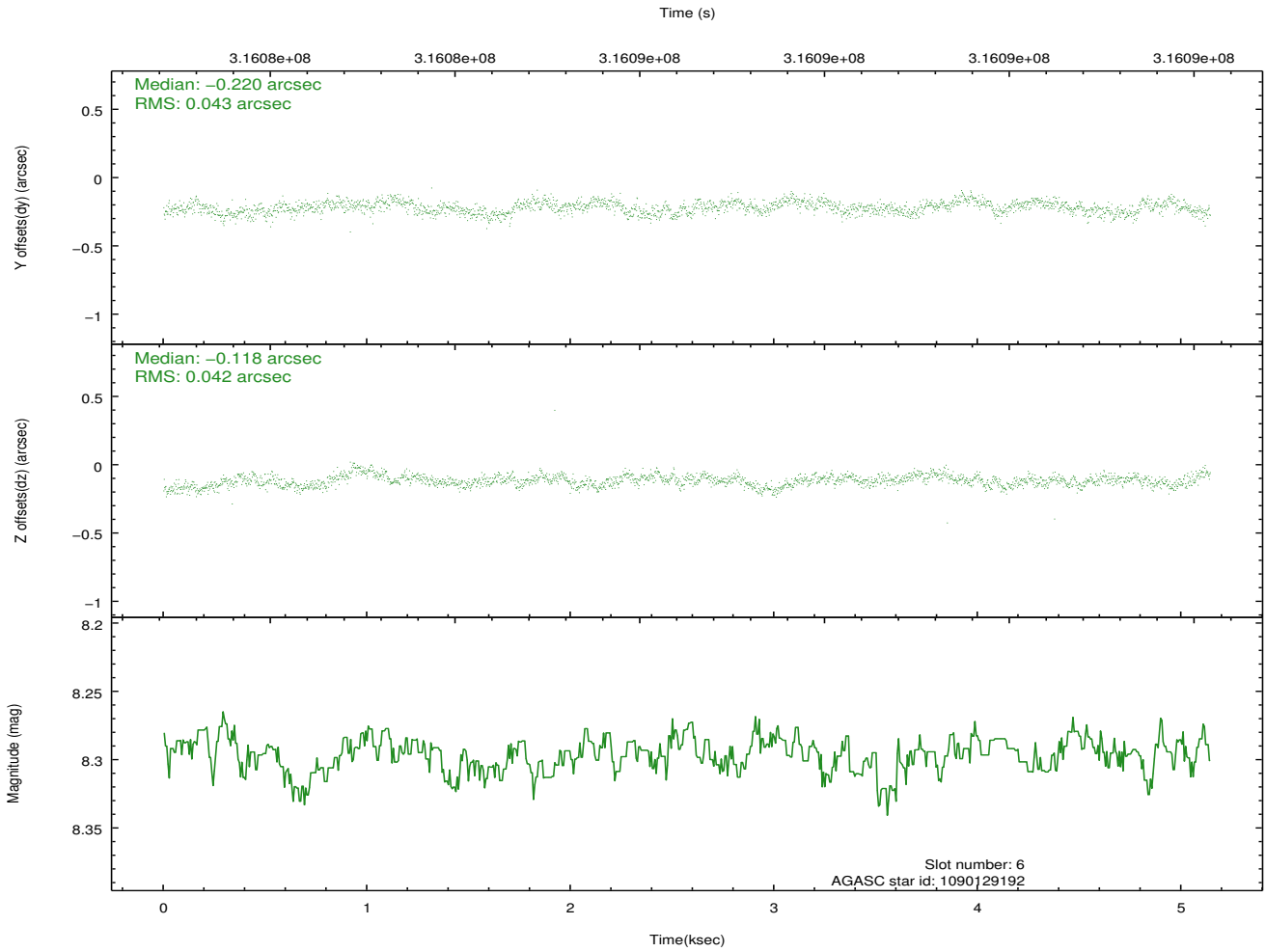
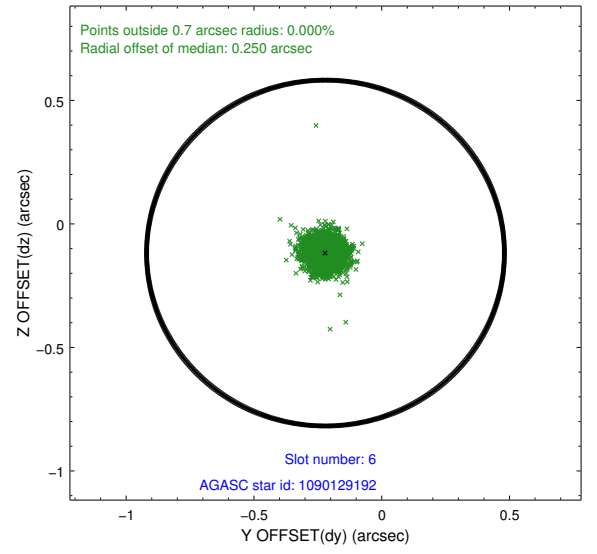
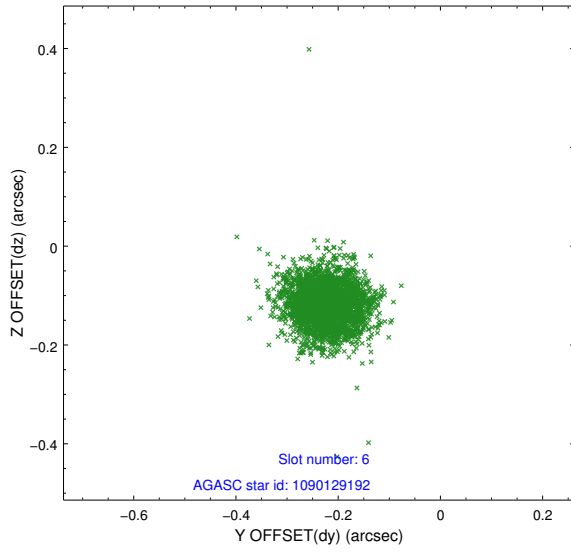
2.4.2 Slot 4



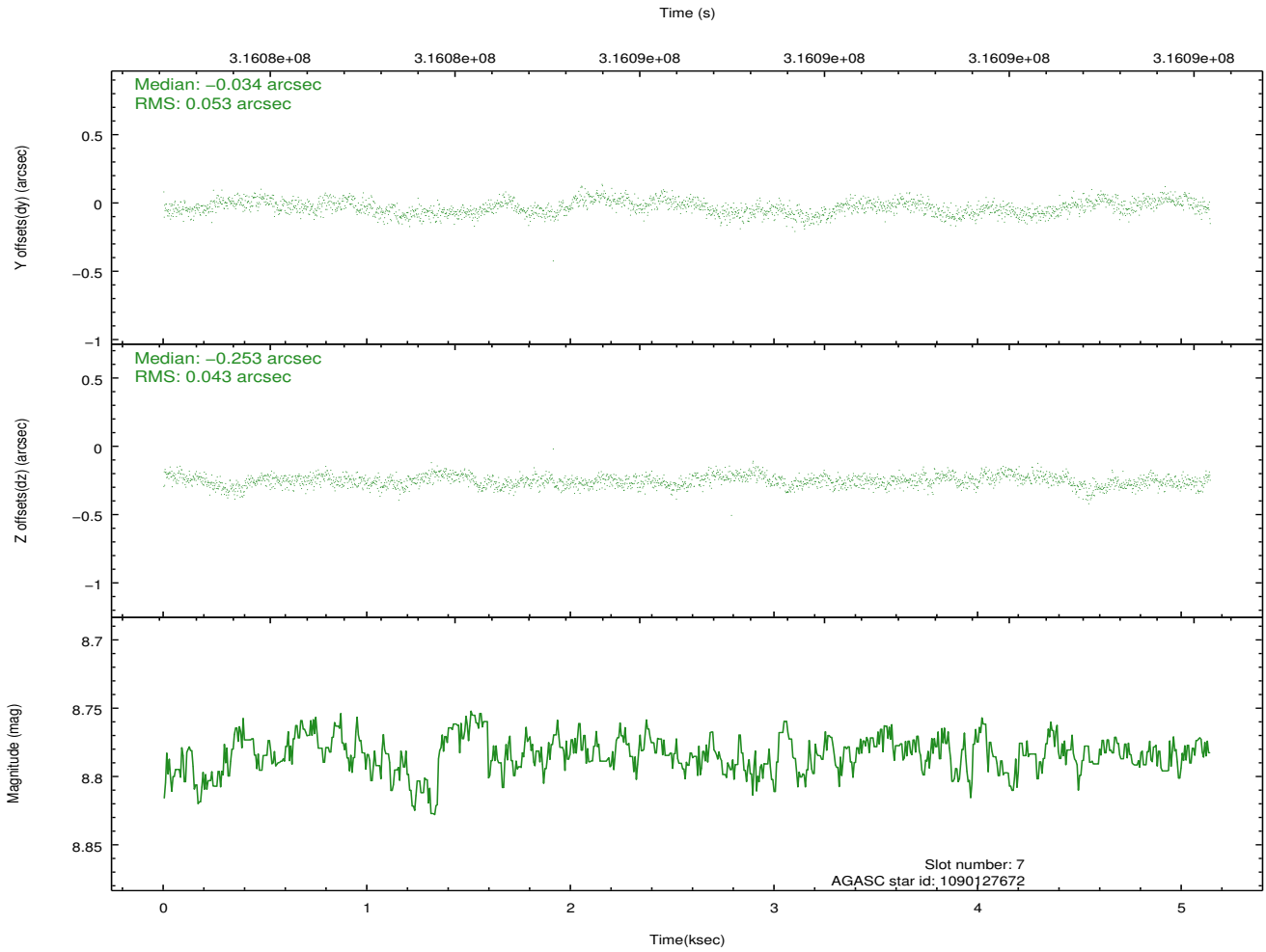
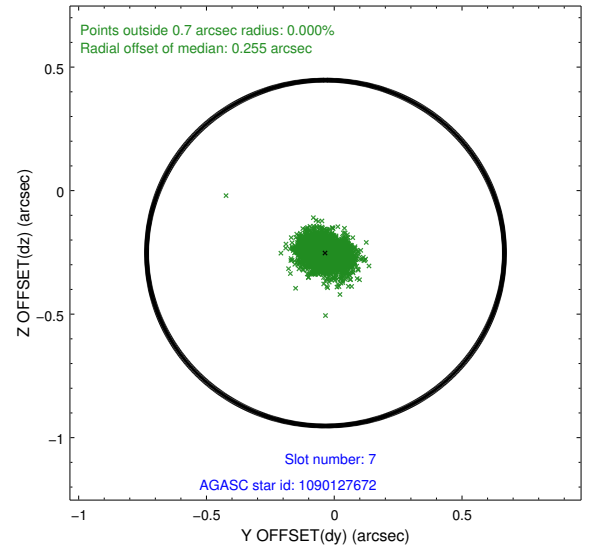
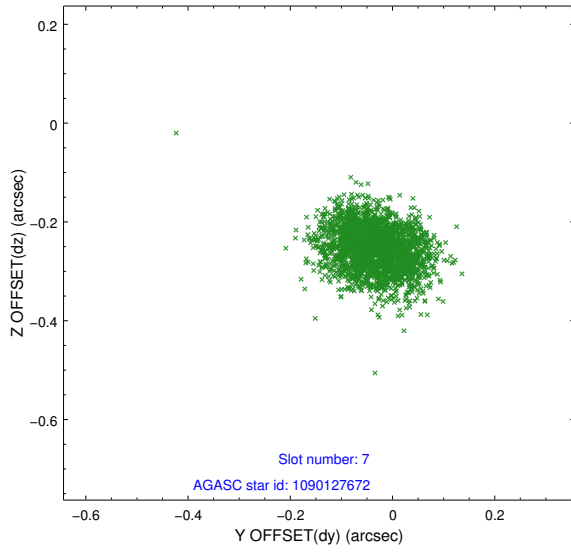
2.4.3 Slot 5



2.4.4 Slot 6

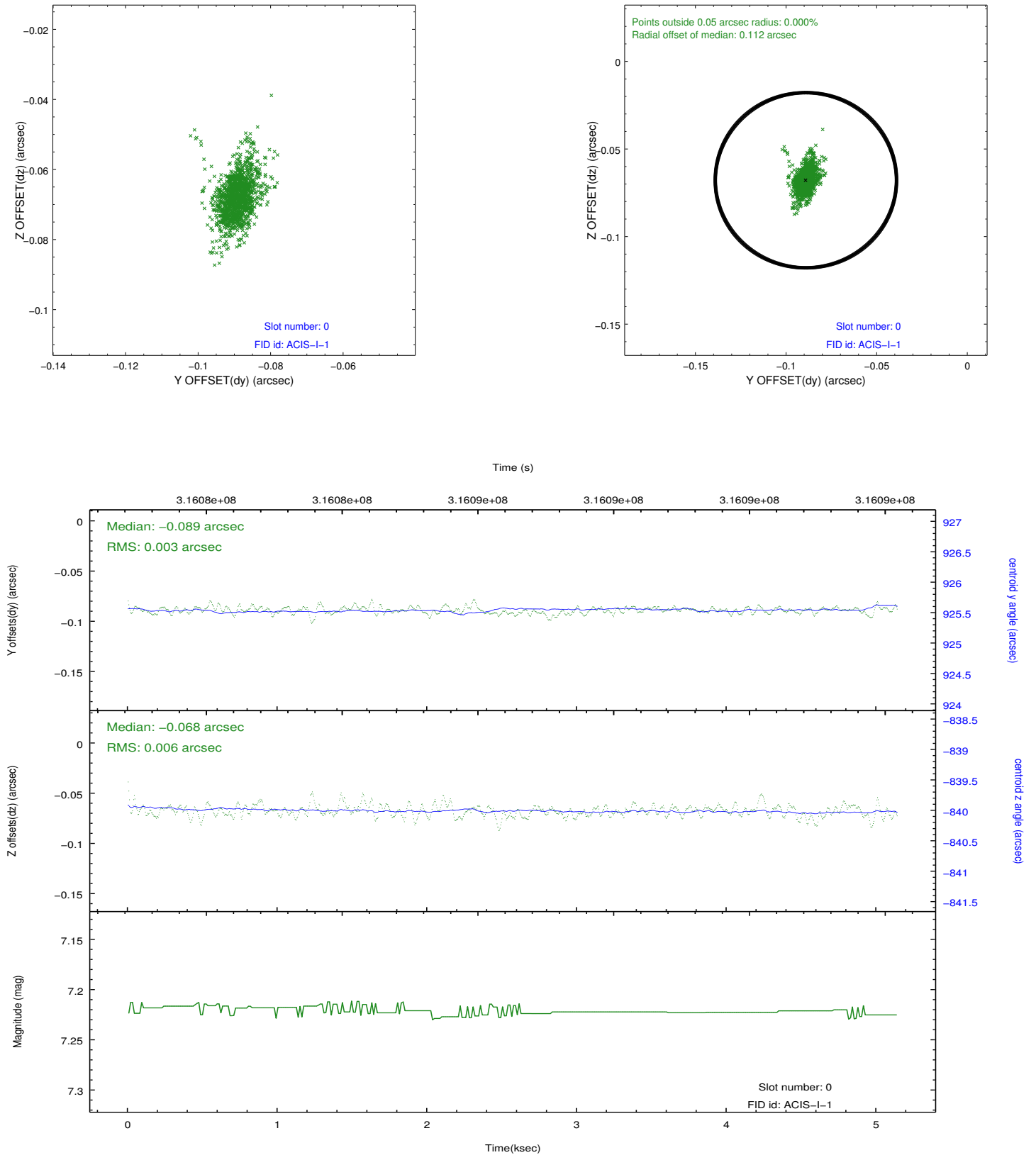


2.4.5 Slot 7

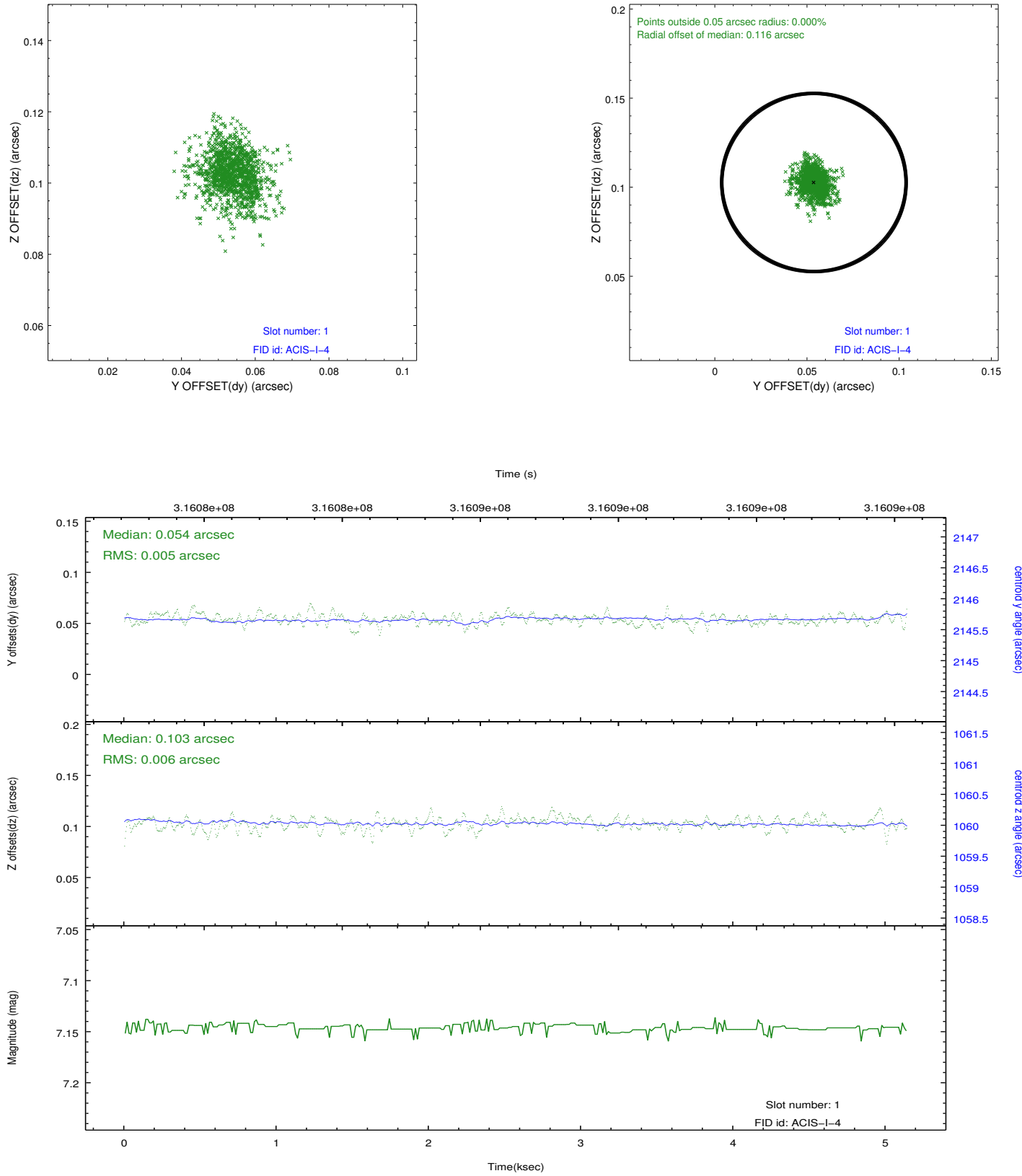


2.5 FID Slots

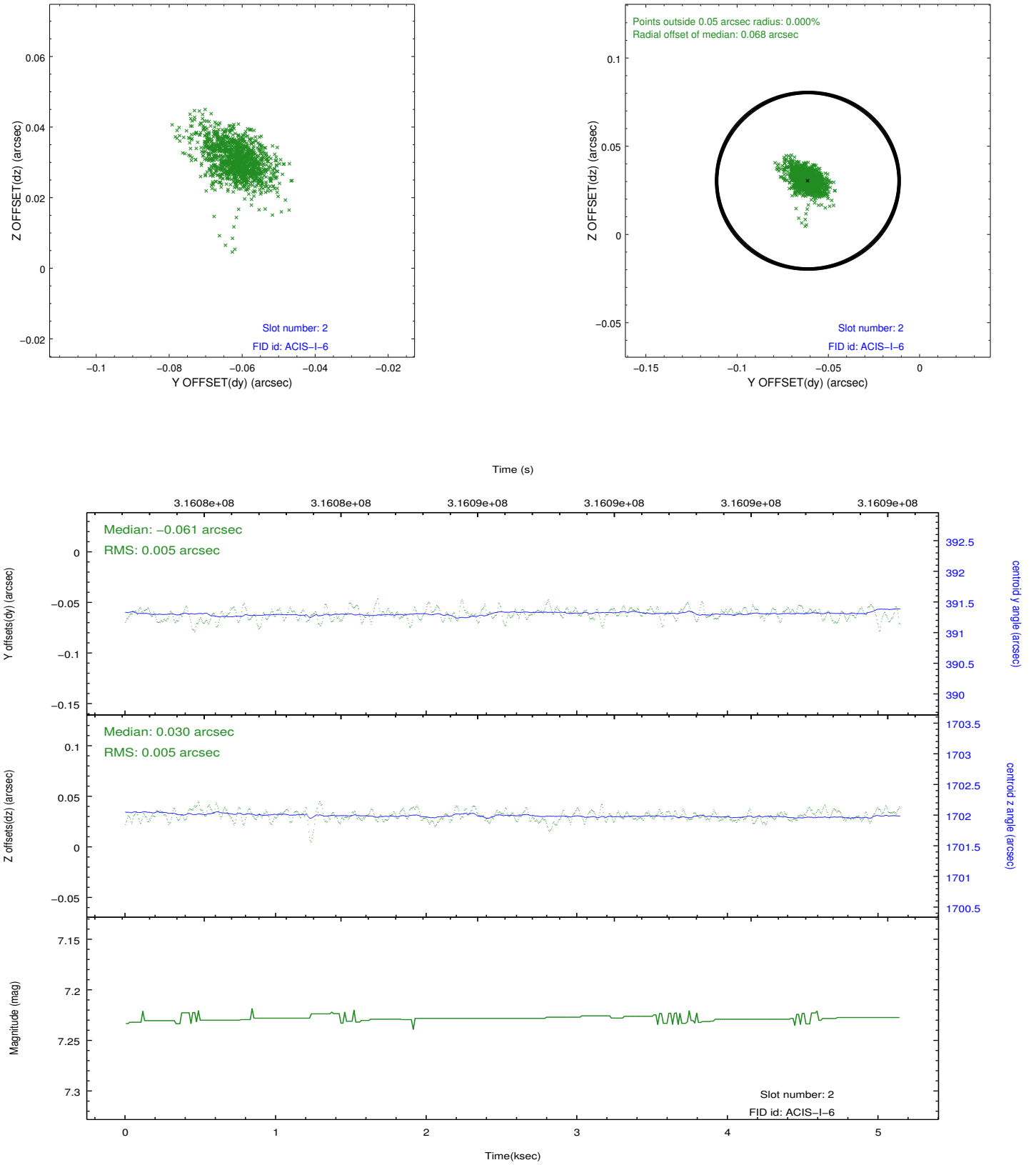
2.5.1 Slot 0



2.5.2 Slot 1



2.5.3 Slot 2



A Summary

A.1 Status

V&V Scientist	Beth Sundheim
V&V Date (YYYY-MM-DD)	2012.05.10
V&V Edition	1
V&V Disposition and Status	OK
V&V Charge Time	5.13599998

A.2 Comments

Joint proposal with NOAO.