

V&V Reference Report

L2 ASCDS Version : 8.4.4

Observation 8582 - L2 Version 2
Chandra X-Ray Center

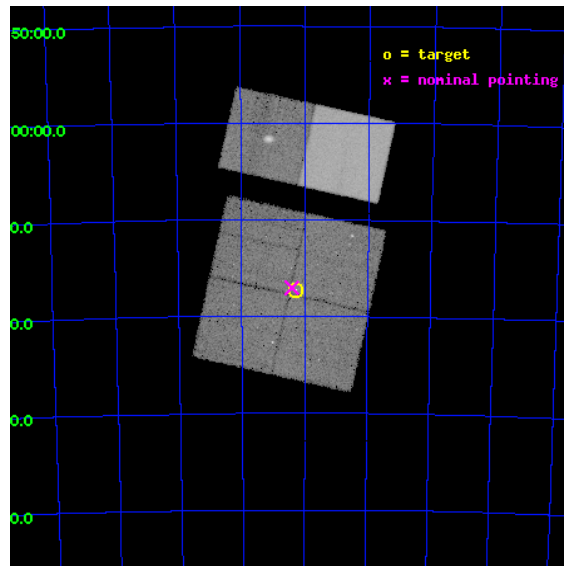
L2 Processing Date : May 31 2012

Contents

1	Front	2
2	OBI	3
2.1	OBI	3
2.1.1	Images	3
2.1.2	Bias	3
2.1.3	Parameters	4
2.1.4	Events	4
2.2	Compared Parameters	5
2.3	Aspect	6
2.4	Star Slots	9
2.4.1	Slot 3	9
2.4.2	Slot 4	10
2.4.3	Slot 5	11
2.4.4	Slot 6	12
2.4.5	Slot 7	13
2.5	FID Slots	14
2.5.1	Slot 0	14
2.5.2	Slot 1	15
2.5.3	Slot 2	16
A	Summary	17
A.1	Status	17
A.2	Comments	17

1 Front

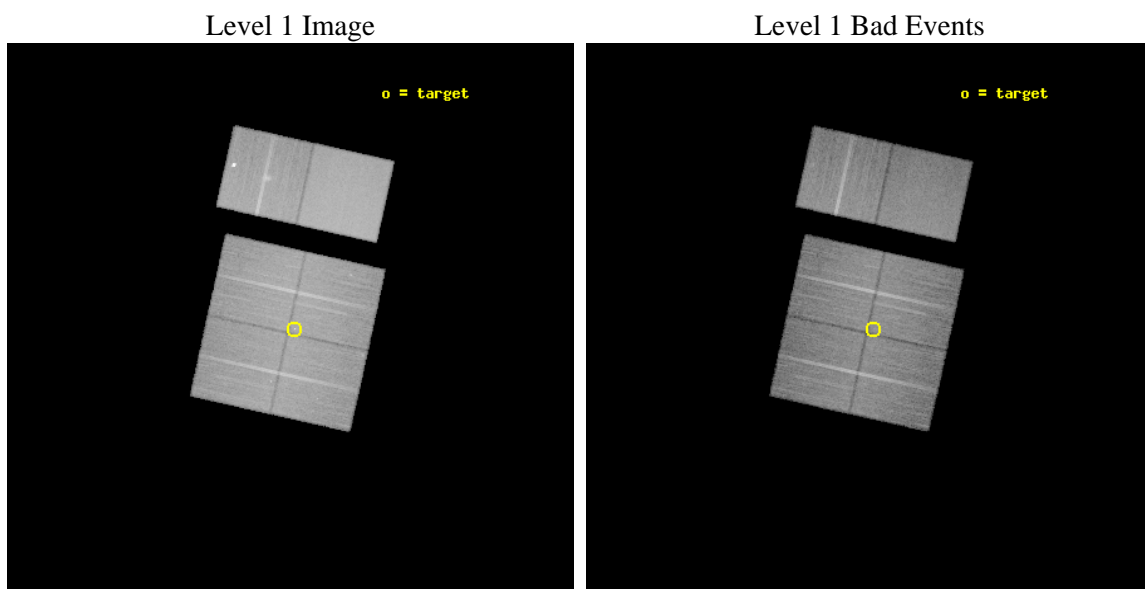
seq_num	200469	Sequence number
obs_id	8582	Observation id
title	Probing the Gas in the Planet Forming Regions of Protoplanetary Disks	Proposal title
observer	Dr. Nuria Calvet	Principal investigator
object	T6/SZ Cha	Source name
dtcycle	0	
cycle	P	events from which exps? Prim/Second/Both
ra_targ	164.57	Observer's specified target RA [deg]
dec_targ	-77.288083	Observer's specified target Dec [deg]
ra_nom	164.60184105084	Nominal RA [deg]
dec_nom	-77.28408168226	Nominal Dec [deg]
roll_nom	12.537857957342	Nominal Roll [deg]
revision	2	Processing version of data
ontime	23151.999913812	Sum of GTIs [s]
livetime	22858.835350442	Livetime [s]
ontime0	23151.999913812	Sum of GTIs [s]
ontime1	23151.999913812	Sum of GTIs [s]
ontime2	23148.758893669	Sum of GTIs [s]
ontime3	23151.999913812	Sum of GTIs [s]
ontime6	23151.999913812	Sum of GTIs [s]
ontime7	23151.999913812	Sum of GTIs [s]
l2events	269720	Number of level 2 events



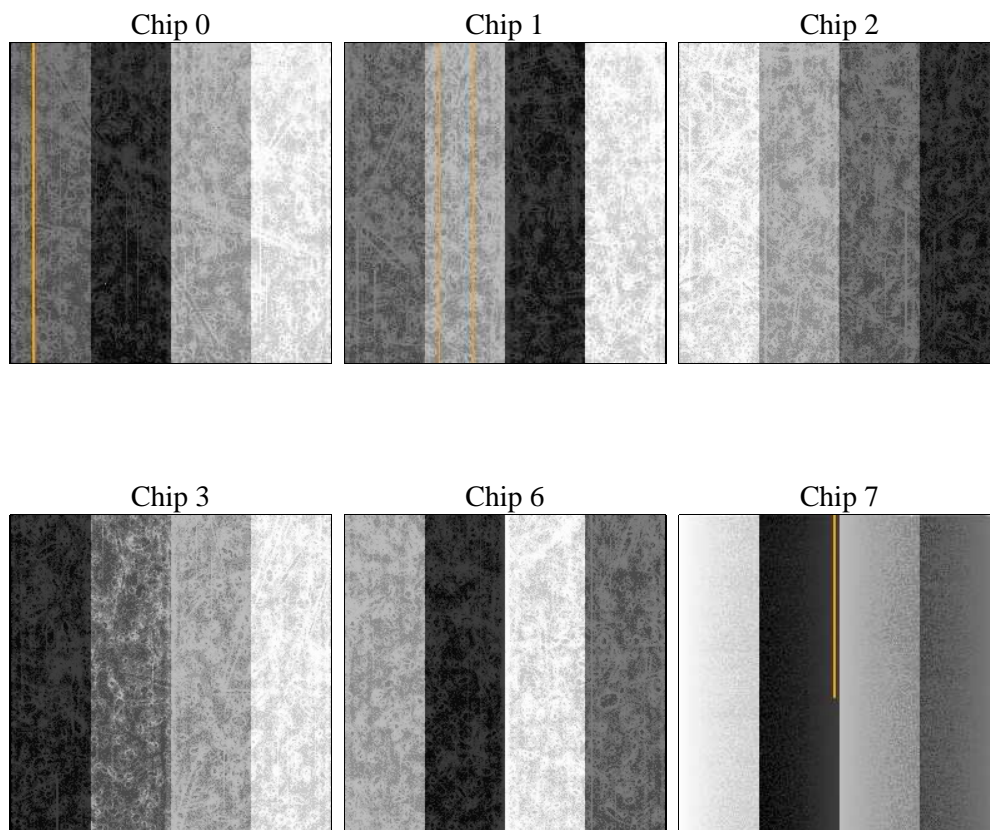
2 OBI

2.1 OBI

2.1.1 Images



2.1.2 Bias



2.1.3 Parameters

obi_num	0	Obi number	sched_exp_time	23000.019000	[s] Scheduled observation exposure time
ascdsver	8.4.4	Processing system revision	ontime	23151.999913812	Sum of GTIs [s]
caldsver	4.4.9	 	ontime0	23151.999913812	Sum of GTIs [s]
date	2012-05-31T01:28:27	Date and time of file creation	ontime1	23151.999913812	Sum of GTIs [s]
revision	2	Processing version of data	ontime2	23148.758893669	Sum of GTIs [s]
			ontime3	23151.999913812	Sum of GTIs [s]
			ontime6	23151.999913812	Sum of GTIs [s]
			ontime7	23151.999913812	Sum of GTIs [s]
			l1events	1511420	Number of level 1 events

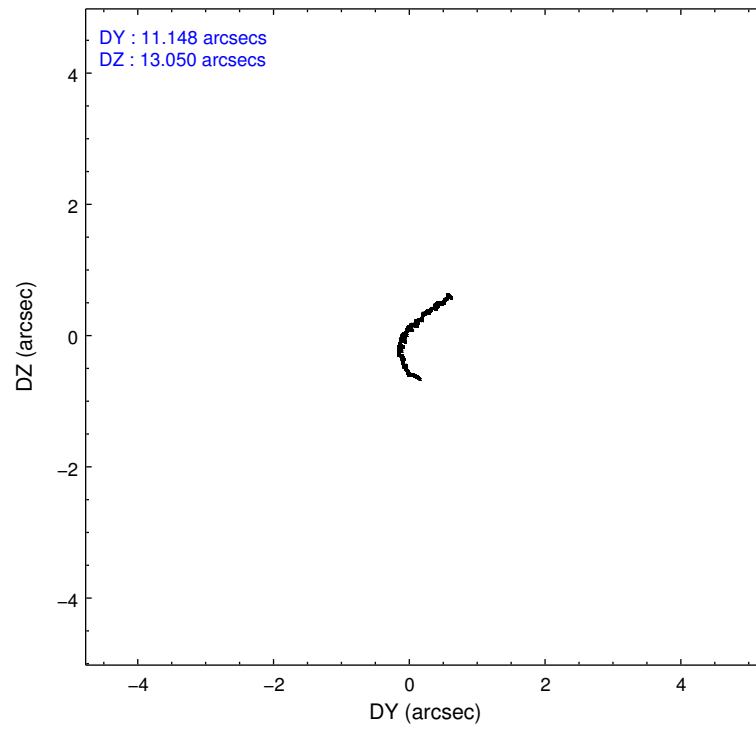
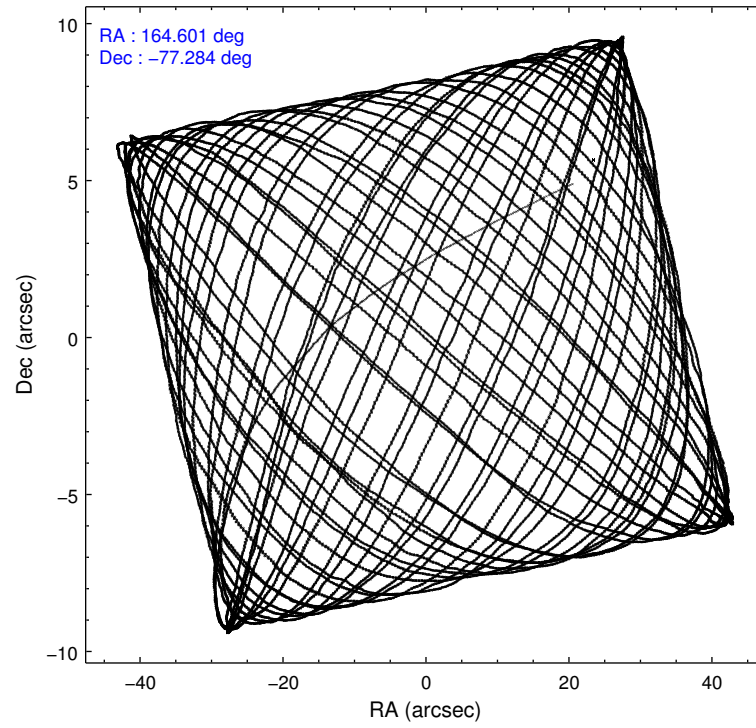
2.1.4 Events

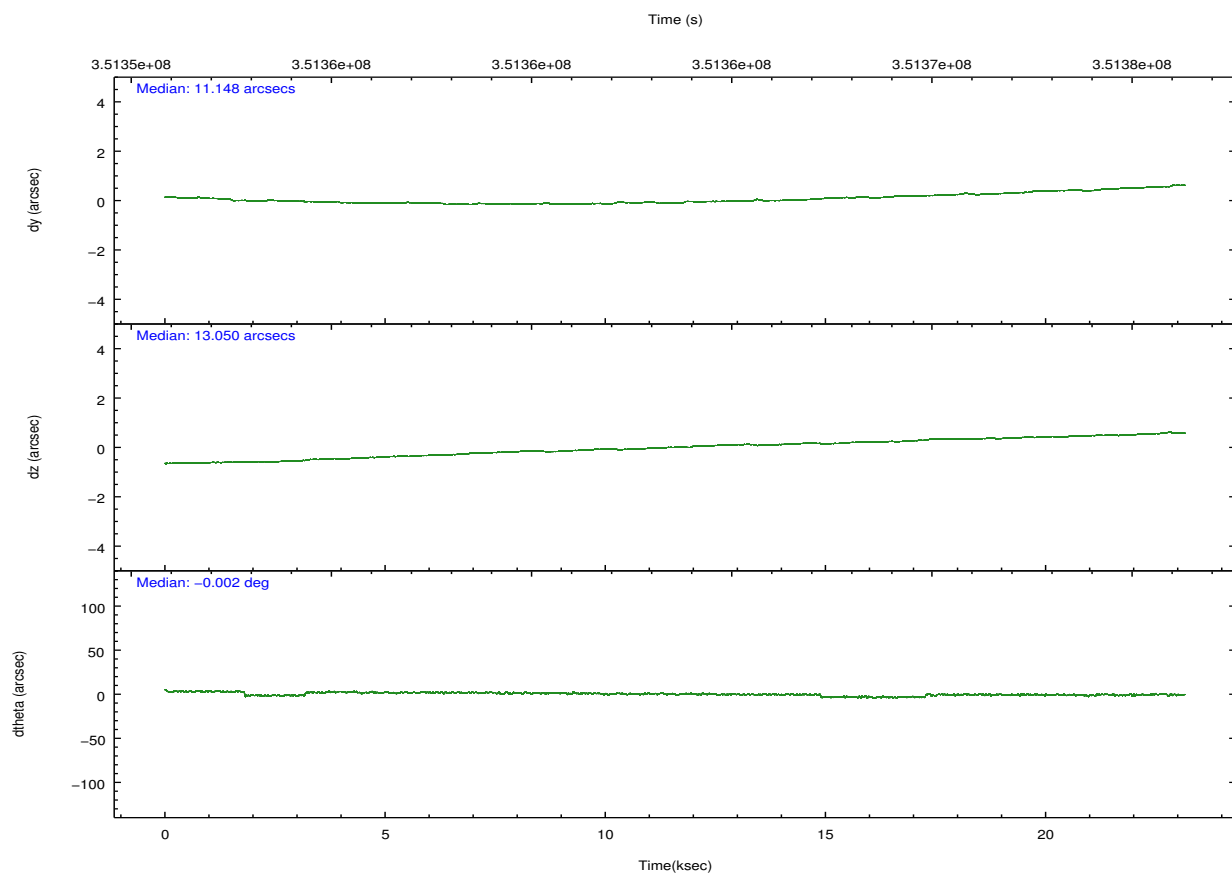
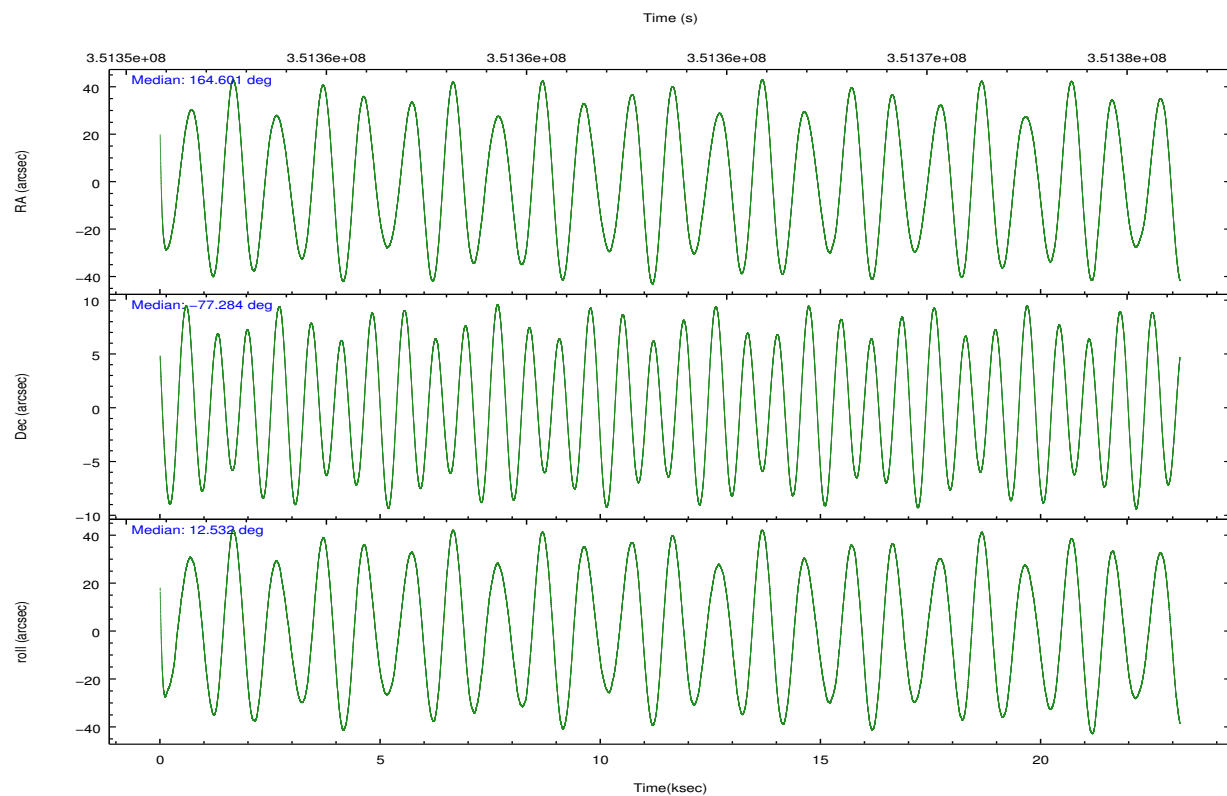
	ccd 0	ccd 1	ccd 2	ccd 3	ccd 6	ccd 7		ccd 0	ccd 1	ccd 2	ccd 3	ccd 6	ccd 7
level 1 events	218721	223249	240009	237203	257854	334384	grade 0 events	13458	12713	12654	13963	20670	11229
rejected events	187772	191155	210895	206709	218507	196284		6%	5%	5%	5%	8%	3%
rejected %	85%	85%	87%	87%	84%	58%	grade 1 events	151	126	151	179	183	392
								0%	0%	0%	0%	0%	0%
							grade 2 events	6905	7618	6254	6008	6924	28158
								3%	3%	2%	2%	2%	8%
							grade 3 events	2819	2800	2714	2763	2802	11346
								1%	1%	1%	1%	1%	3%
							grade 4 events	2539	2830	2624	2731	2805	11211
								1%	1%	1%	1%	1%	3%
							grade 5 events	10066	10630	9647	11397	11822	31003
								4%	4%	4%	4%	4%	9%
							grade 6 events	5246	6155	4888	5045	6172	76226
								2%	2%	2%	2%	2%	22%
							grade 7 events	177537	180377	201077	195117	206476	164819
								81%	80%	83%	82%	80%	49%

2.2 Compared Parameters

Parameter	Planned	Actual	Parameter	Planned	Actual
Instrument	ACIS	ACIS	Obspar format version number	7	7
Detector	ACIS-012367	ACIS-012367	Obspar file type	PREDICTED	ACTUAL
Grating	NONE	NONE	Obspar update status	NONE	UPDATED
Data mode	FAINT	FAINT	Number of optional ACIS chips dropped	0	0
Observation mode	POINTING	POINTING	On-chip summing requested	N	N
[deg] Pointing RA	164.509998	164.6018410508426	Subarray requested	NONE	NONE
[deg] Pointing Dec	-77.302730	-77.28408168226024	Alternating exposures requested	N	N
[deg] Pointing Roll	12.239578	12.53785795734167	[s] Primary exposure time	0.000000	3.2
[mm] SIM focus pos	-0.782348	-0.7809083437167272			
[mm] SIM defocus	0	0.001439871863259334			
[mm] SIM translation stage pos	-233.592463	-233.5874344608287			
[mm] SIM translation stage offset	0	-0.005018542100998502			
[s] Observation start time (MET)	351352165.184000	351351099.66799			
Observation start date	2009-02-18T13:48:19	2009-02-18T13:31:39			
[s] Observation end time (MET)	351375165.184000	351375399.3442			
Observation end date	2009-02-18T20:11:39	2009-02-18T20:16:39			
Read mode	TIMED	TIMED			

2.3 Aspect



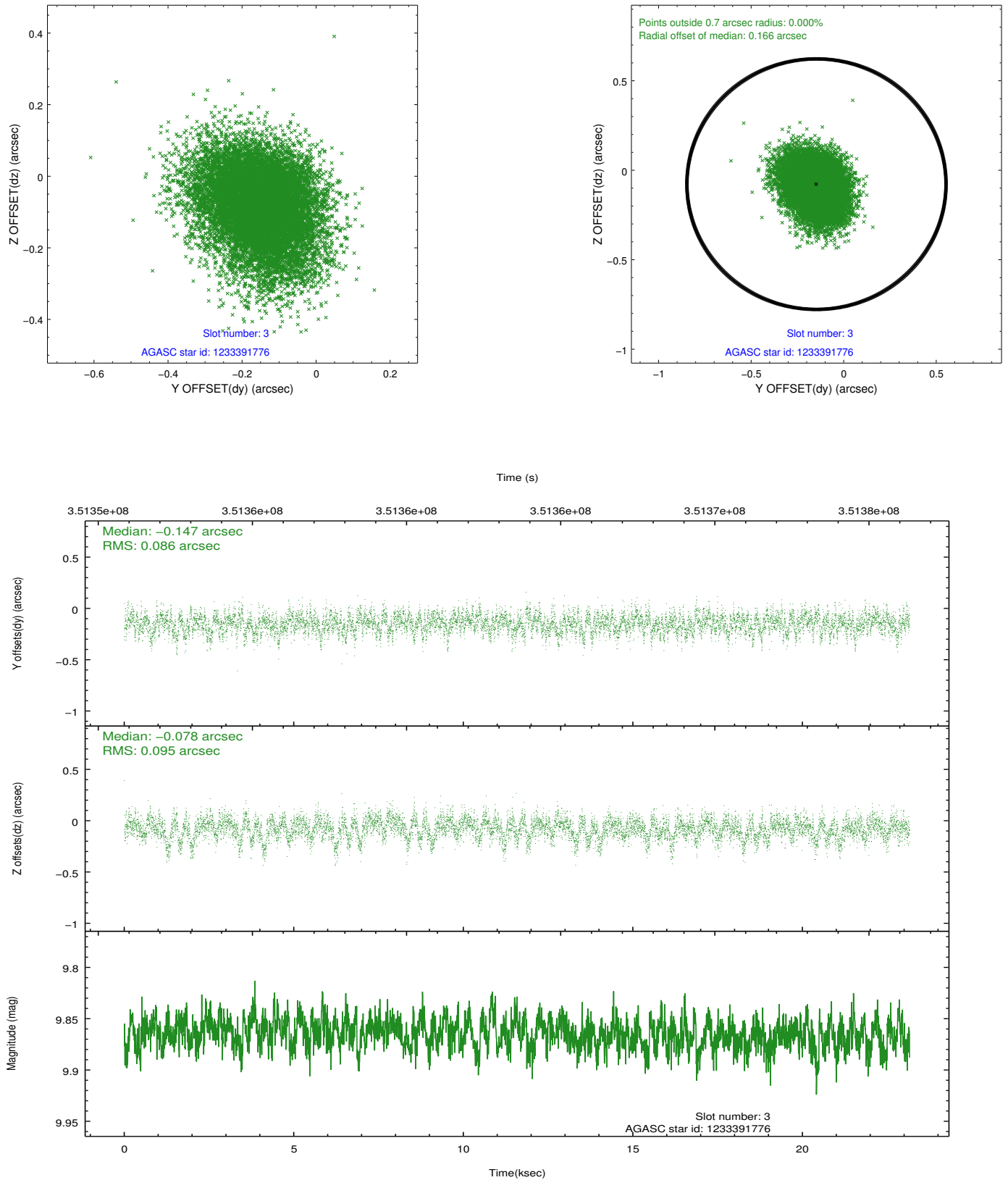


Slot Statistics

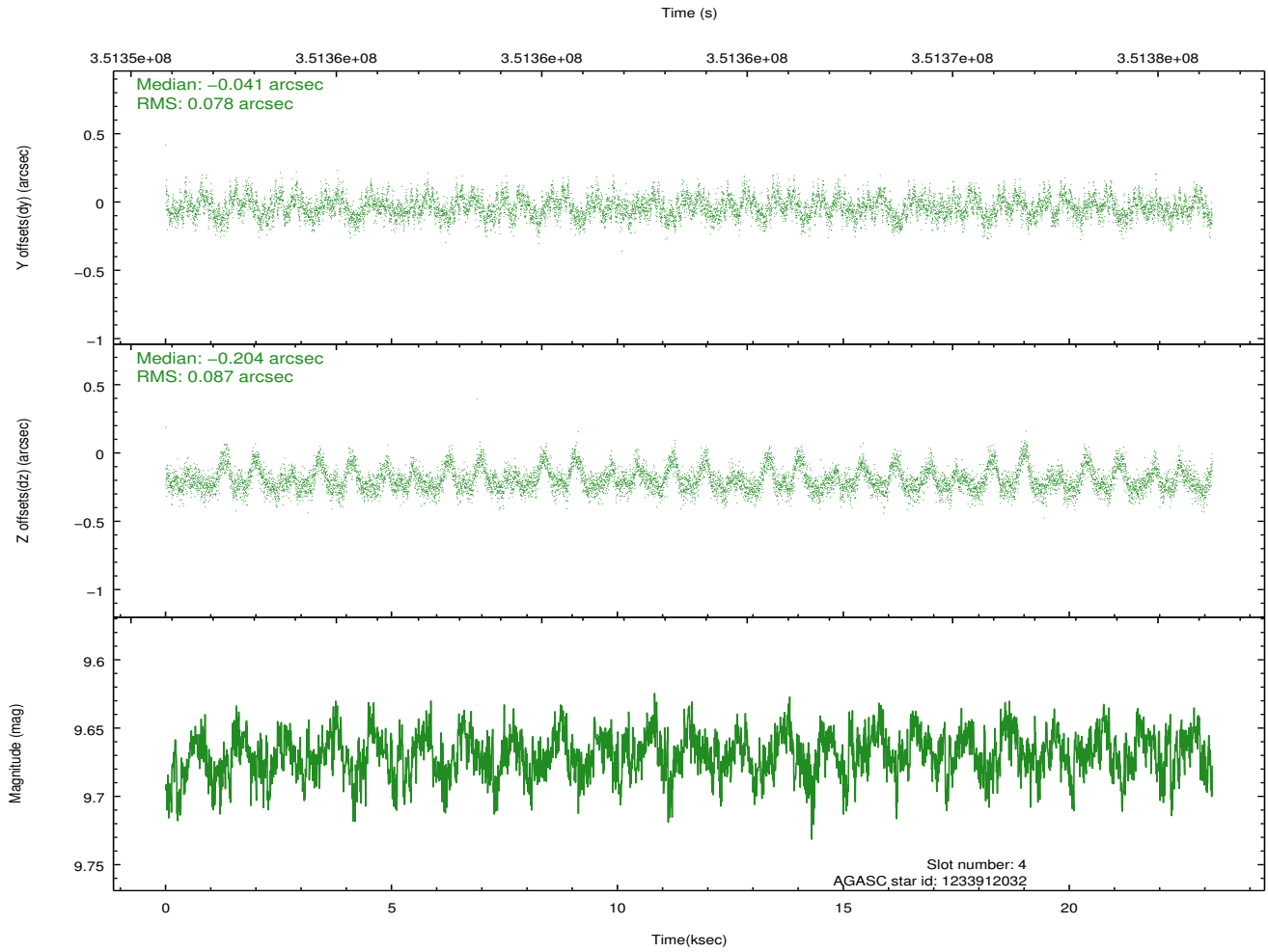
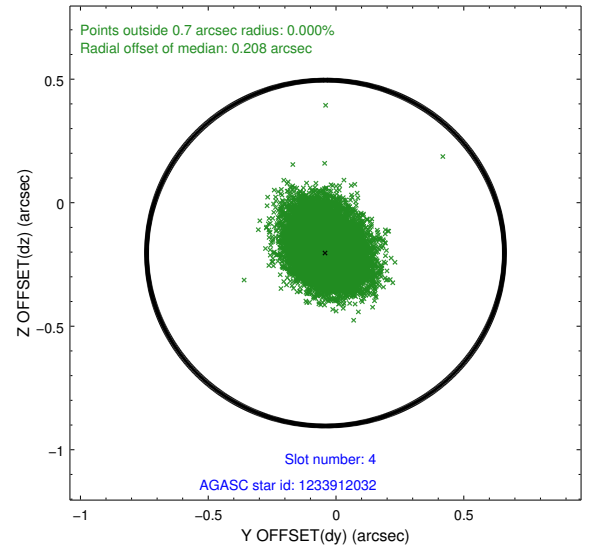
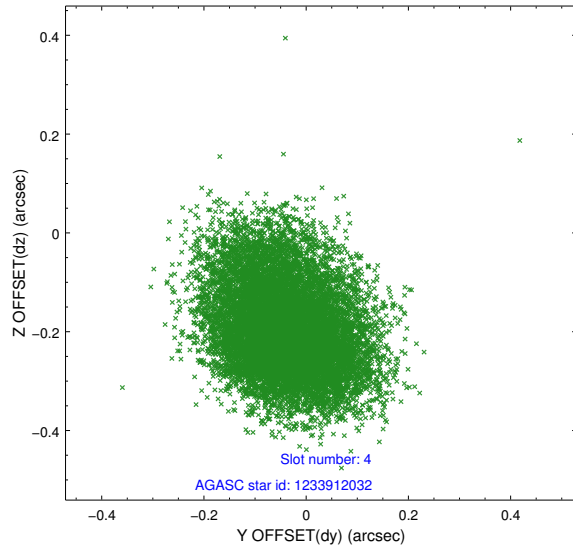
slot	status	id	mag	n_pts	med_dy	med_dz	dr1	dr2	ra	dec	mean_y	mean_z
0	FID	ACIS-I-1	7.09	5649	0.007	-0.001	0.022	0.049	0.000000	0.000000	928.34	-836.59
1	FID	ACIS-I-4	7.03	5647	0.138	0.020	0.015	0.036	0.000000	0.000000	2148.61	1063.17
2	FID	ACIS-I-5	7.08	5649	-0.241	0.052	0.017	0.025	0.000000	0.000000	-1819.71	1061.24
3	GUIDE	1233391776	9.86	11278	-0.147	-0.078	0.135	0.227	165.358086	-76.752058	1102.90	1784.71
4	GUIDE	1233912032	9.67	11274	-0.041	-0.204	0.123	0.202	162.255764	-76.907737	-1501.77	1745.06
5	GUIDE	1233913352	9.30	11209	0.017	-0.017	0.109	0.203	165.333422	-77.603525	391.37	-1196.65
6	GUIDE	1233913560	9.96	11212	0.054	0.275	0.142	0.226	162.653684	-77.968172	-1873.16	-2067.00
7	GUIDE	1233913600	9.29	11283	0.120	0.019	0.082	0.135	162.381907	-77.109378	-1529.18	1012.23

2.4 Star Slots

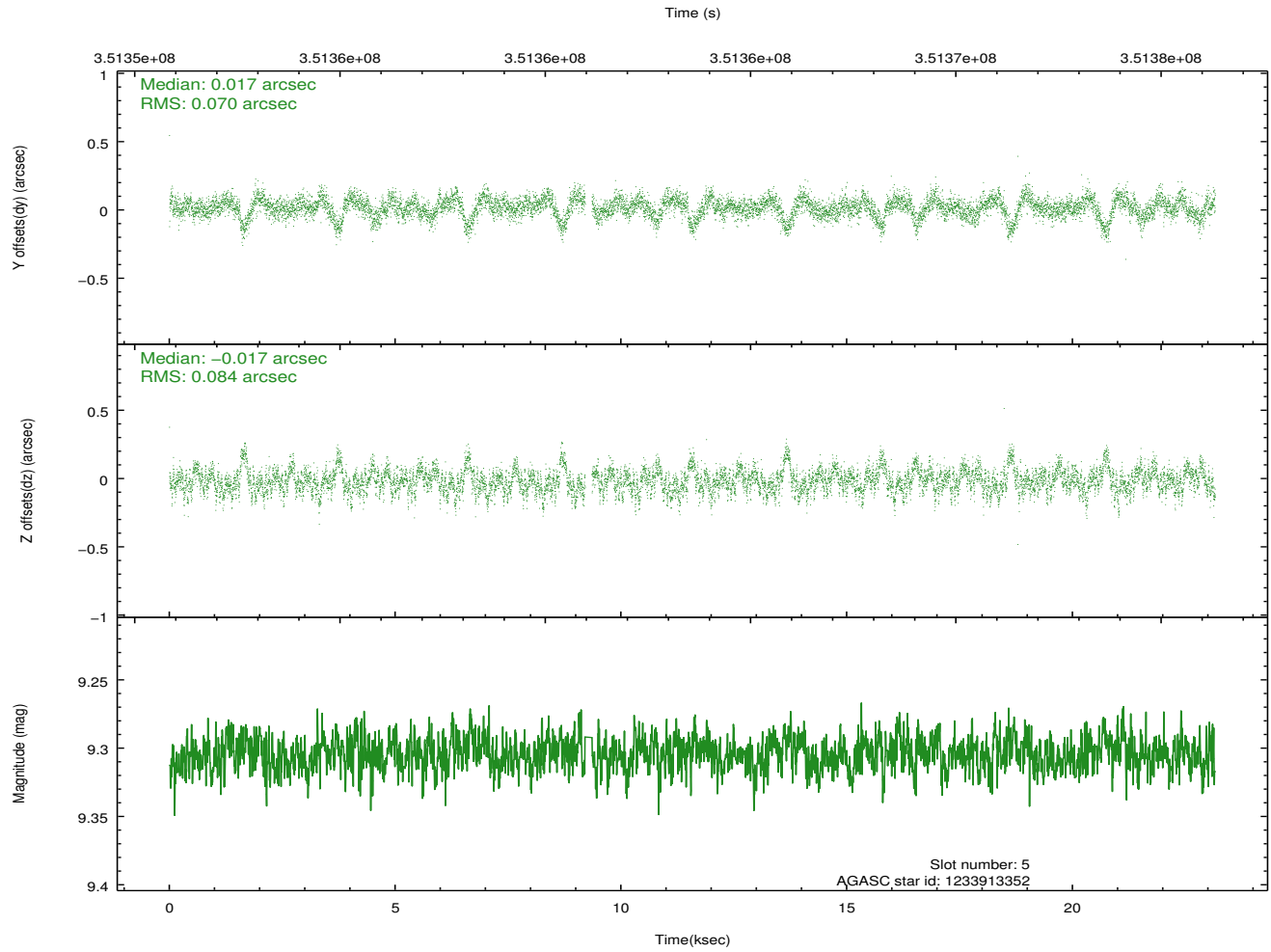
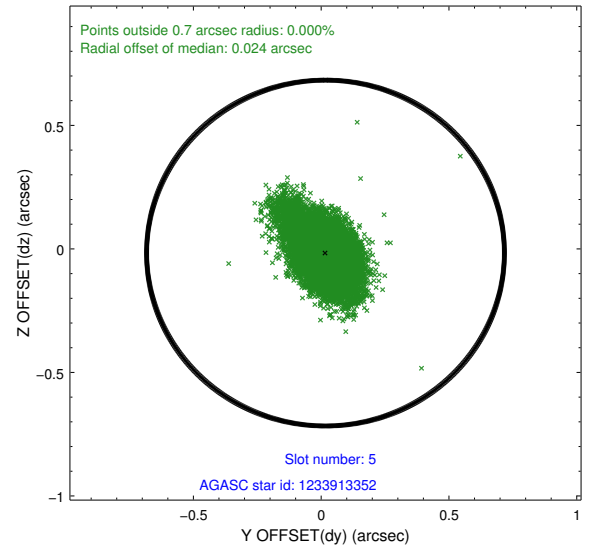
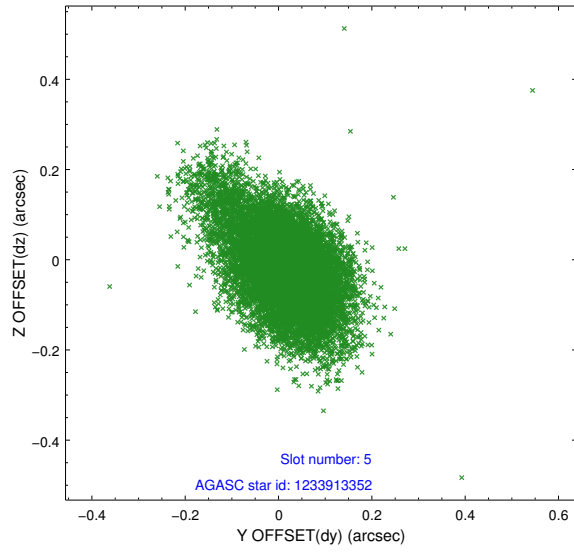
2.4.1 Slot 3



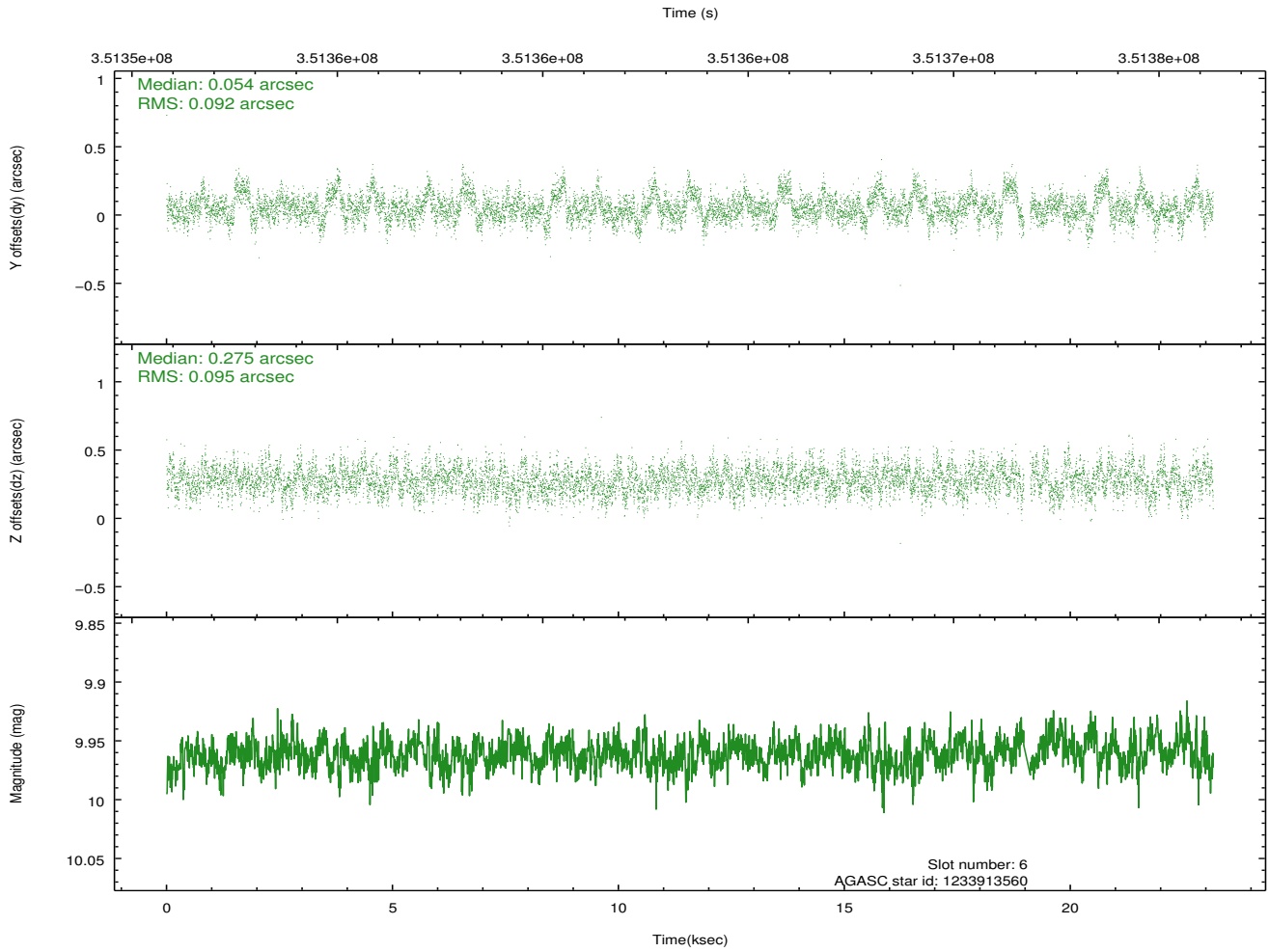
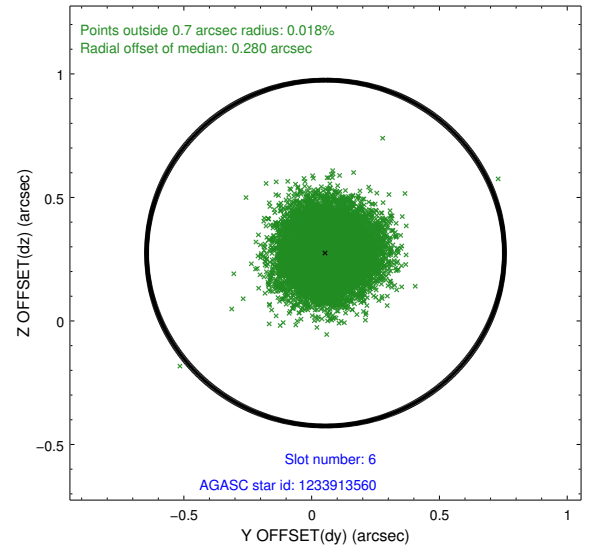
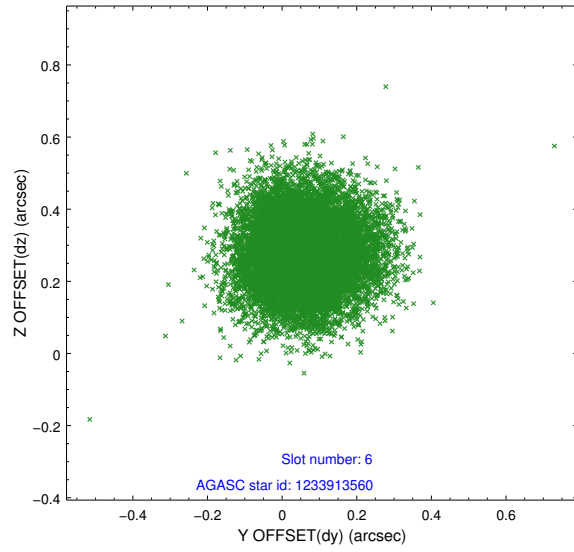
2.4.2 Slot 4



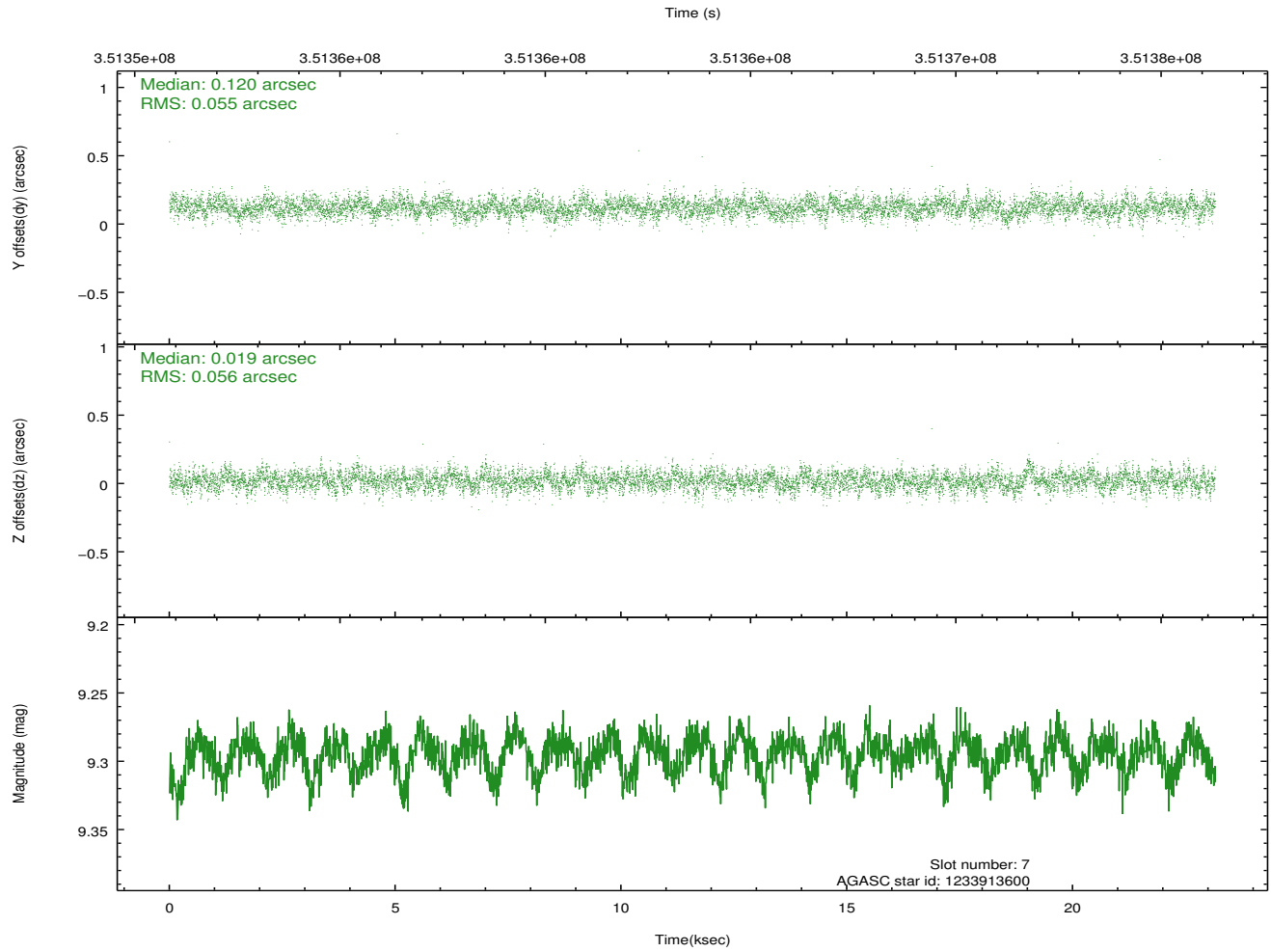
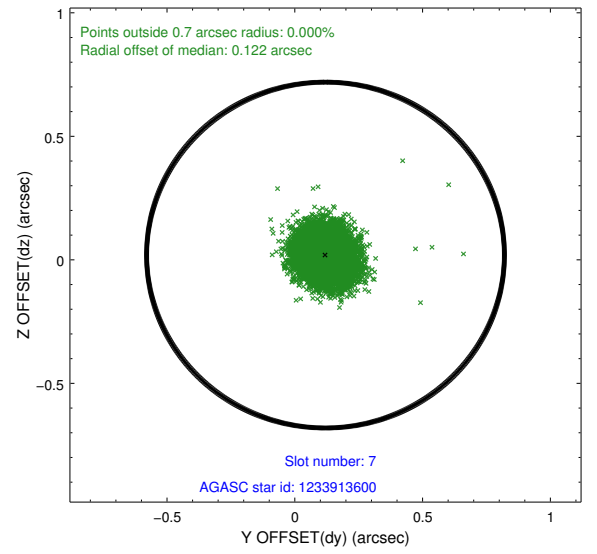
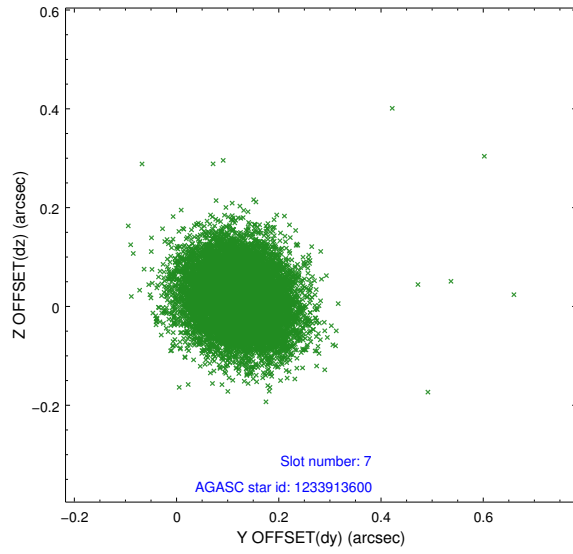
2.4.3 Slot 5



2.4.4 Slot 6

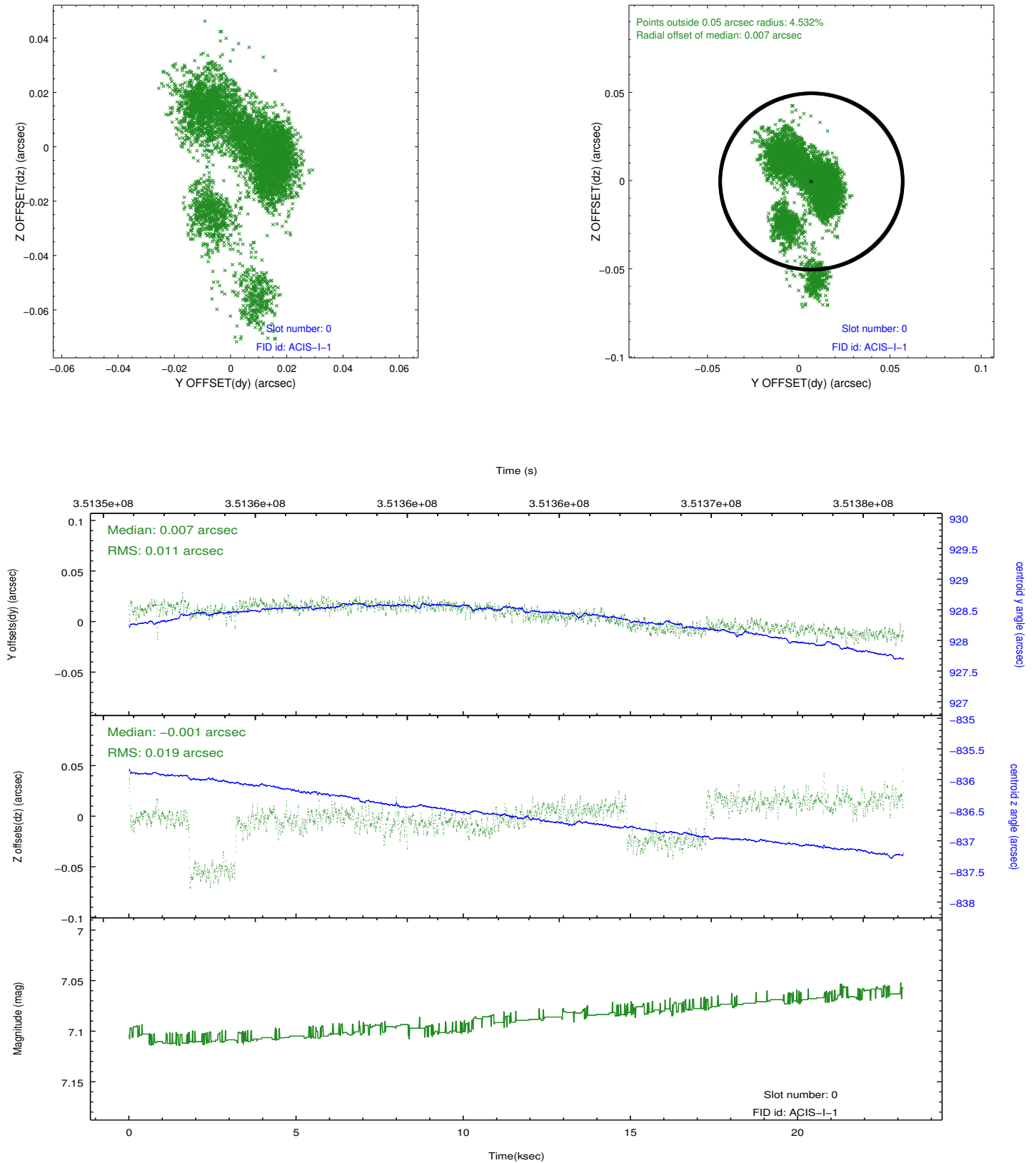


2.4.5 Slot 7

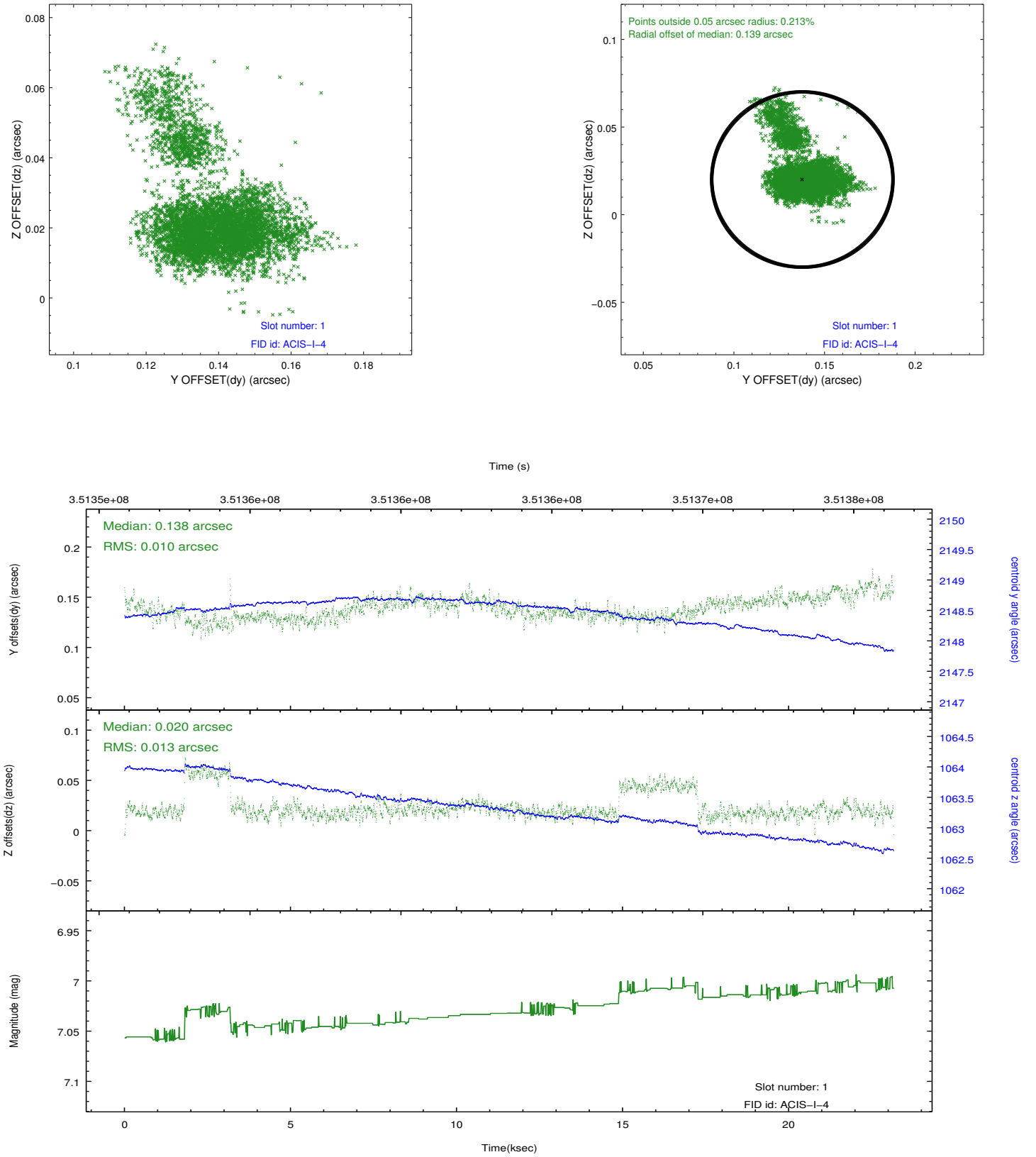


2.5 FID Slots

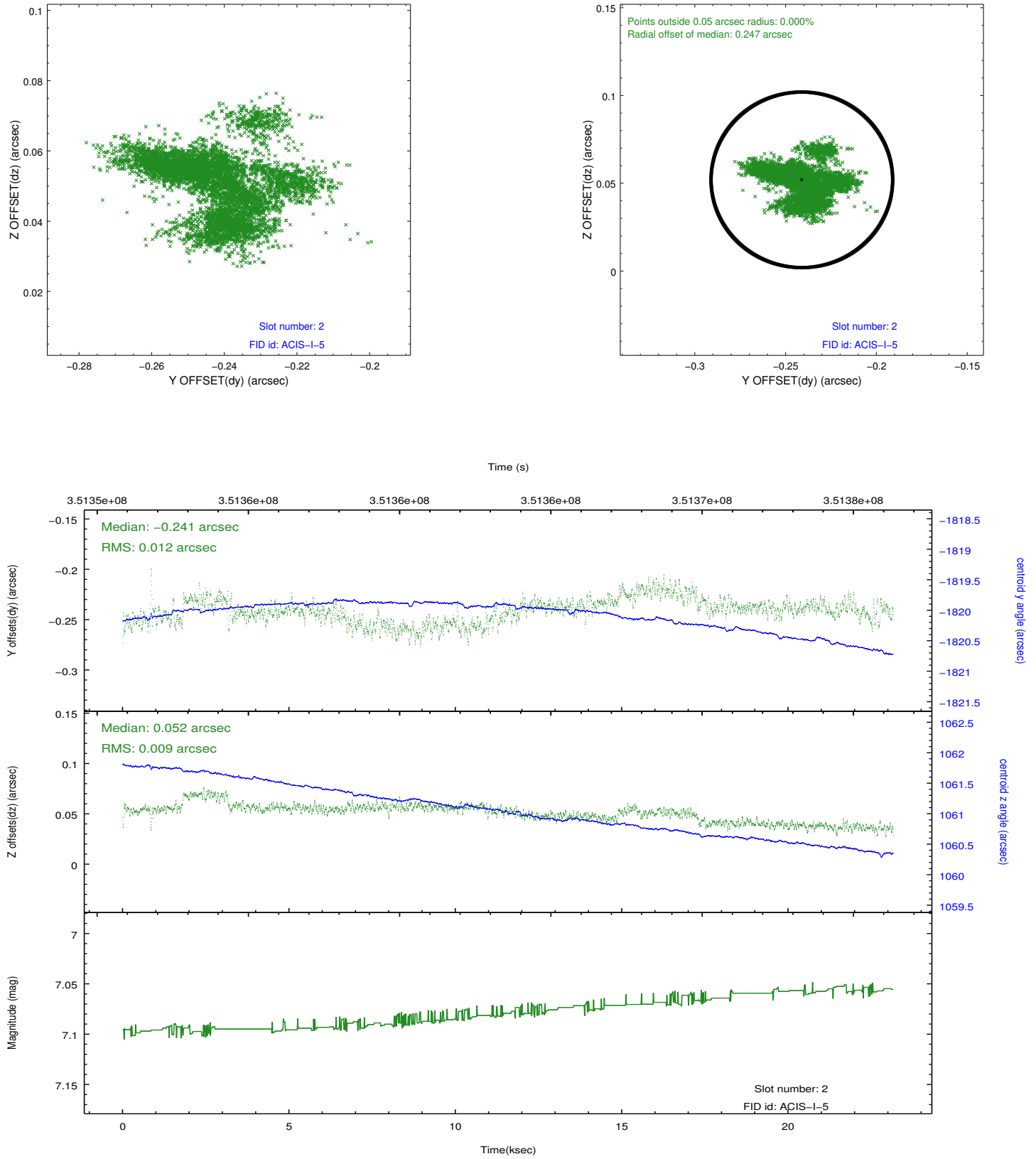
2.5.1 Slot 0



2.5.2 Slot 1



2.5.3 Slot 2



A Summary

A.1 Status

V&V Scientist	Jen Lauer
V&V Date (YYYY-MM-DD)	2012.06.05
V&V Edition	1
V&V Disposition and Status	OK
V&V Charge Time	23.1519999

A.2 Comments

Joint proposal with Spitzer.