

V&V Reference Report

L2 ASCDS Version : 8.4.3.1

Observation 8172 - L2 Version 2
Chandra X-Ray Center

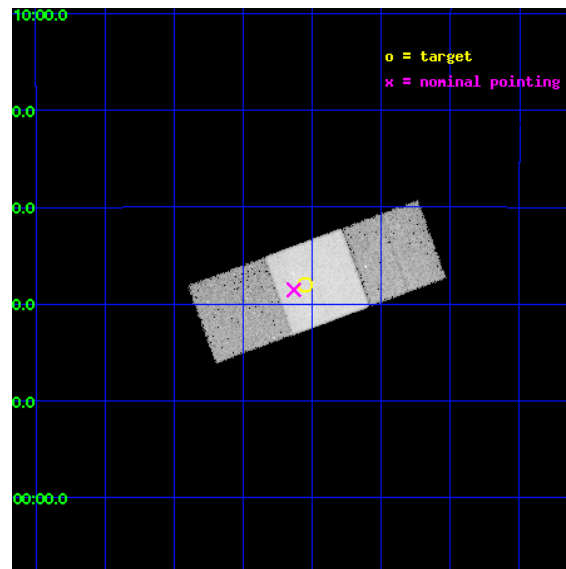
L2 Processing Date : Apr 14 2012

Contents

1	Front	2
2	OBI	3
2.1	OBI	3
2.1.1	Images	3
2.1.2	Bias	3
2.1.3	Parameters	4
2.1.4	Events	4
2.2	Compared Parameters	5
2.3	Aspect	6
2.4	Star Slots	9
2.4.1	Slot 3	9
2.4.2	Slot 4	10
2.4.3	Slot 5	11
2.4.4	Slot 6	12
2.4.5	Slot 7	13
2.5	FID Slots	14
2.5.1	Slot 0	14
2.5.2	Slot 1	15
2.5.3	Slot 2	16
A	Summary	17
A.1	Status	17
A.2	Comments	17

1 Front

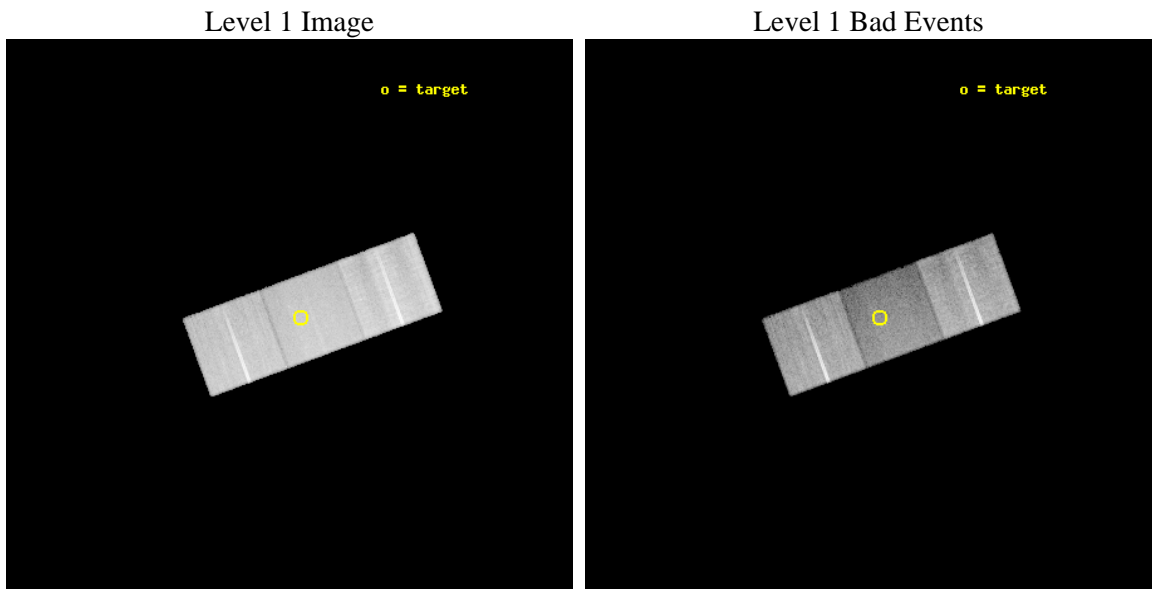
seq_num	600609	Sequence number
obs_id	8172	Observation id
title	Compact Galaxy Groups: Building Blocks of Galaxy Clusters and Massive Ellipticals	Proposal title
observer	Professor Gordon Garmire	Principal investigator
object	HCG 22	Source name
dtcycle	0	
cycle	P	events from which exps? Prim/Second/Both
ra_targ	45.8875	Observer's specified target RA [deg]
dec_targ	-15.633333	Observer's specified target Dec [deg]
ra_nom	45.908234794711	Nominal RA [deg]
dec_nom	-15.642489665067	Nominal Dec [deg]
roll_nom	339.83185309539	Nominal Roll [deg]
revision	2	Processing version of data
ontime	32171.759257078	Sum of GTIs [s]
livetime	31751.41153788	Livetime [s]
ontime6	32174.900247455	Sum of GTIs [s]
ontime7	32171.759257078	Sum of GTIs [s]
ontime8	32168.618256867	Sum of GTIs [s]
l2events	144625	Number of level 2 events



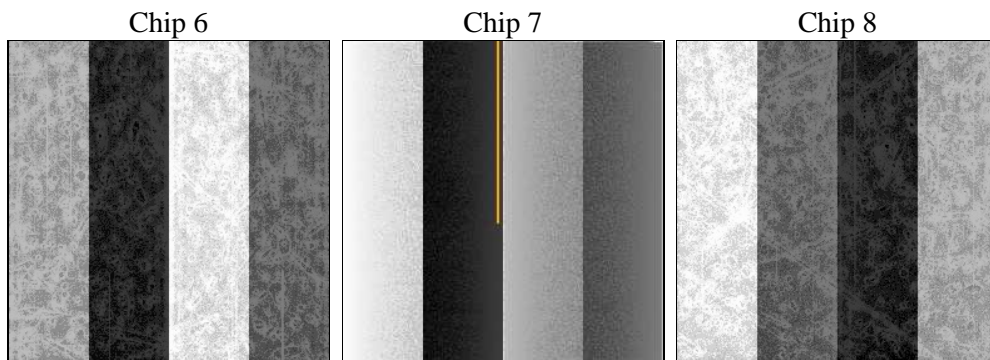
2 OBI

2.1 OBI

2.1.1 Images



2.1.2 Bias



2.1.3 Parameters

obi_num	0	Obi number	sched_exp_time	32000.000000	[s] Scheduled observation exposure time
ascdsver	8.4.3.1	Processing system revision	ontime	32171.759257078	Sum of GTIs [s]
caldsver	4.4.9	 	ontime6	32174.900247455	Sum of GTIs [s]
date	2012-04-14T05:24:25	Date and time of file creation	ontime7	32171.759257078	Sum of GTIs [s]
revision	2	Processing version of data	ontime8	32168.618256867	Sum of GTIs [s]
			l1events	731851	Number of level 1 events

2.1.4 Events

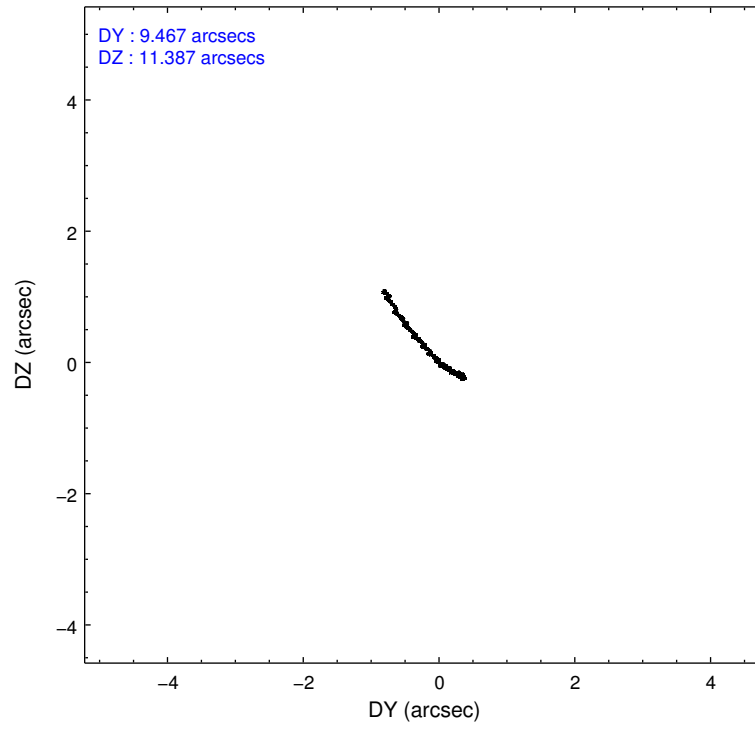
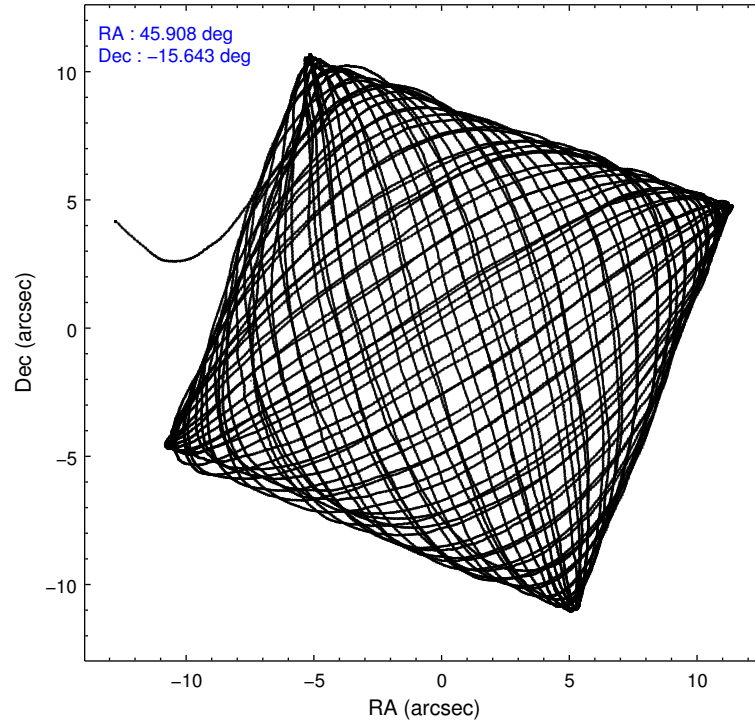
	ccd 6	ccd 7	ccd 8
level 1 events	227492	216094	288265
rejected events	204275	109782	219518
rejected %	89%	50%	76%

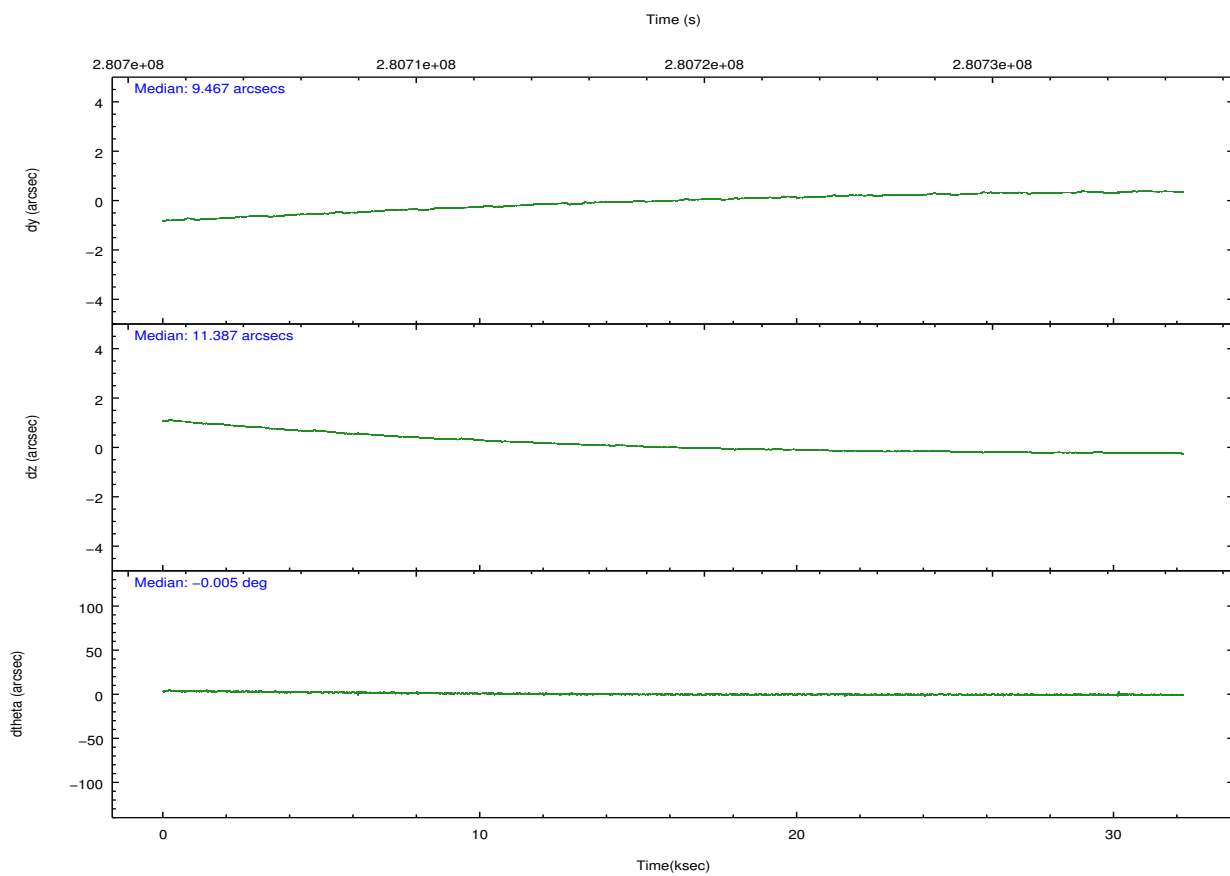
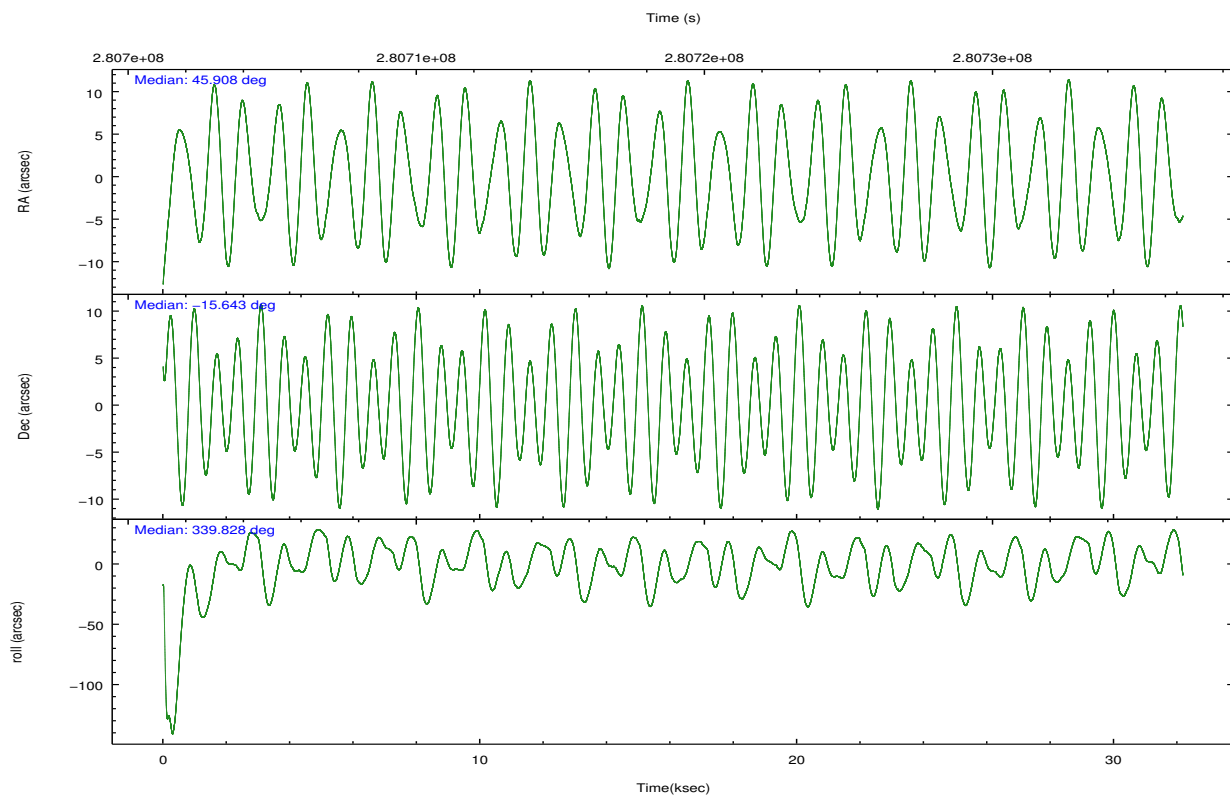
	ccd 6	ccd 7	ccd 8
grade 0 events	8430	11111	19164
	3%	5%	6%
grade 1 events	108	305	220
	0%	0%	0%
grade 2 events	5094	22601	15859
	2%	10%	5%
grade 3 events	2573	10415	7971
	1%	4%	2%
grade 4 events	2478	10243	7229
	1%	4%	2%
grade 5 events	7612	23164	11745
	3%	10%	4%
grade 6 events	4800	52757	19051
	2%	24%	6%
grade 7 events	196397	85498	207026
	86%	39%	71%

2.2 Compared Parameters

Parameter	Planned	Actual	Parameter	Planned	Actual
Instrument	ACIS	ACIS	Obspar format version number	7	7
Detector	ACIS-678	ACIS-678	Obspar file type	PREDICTED	ACTUAL
Grating	NONE	NONE	Obspar update status	NONE	UPDATED
Data mode	VFAINT	VFAINT	Number of optional ACIS chips dropped	0	0
Observation mode	POINTING	POINTING	On-chip summing requested	N	N
[deg] Pointing RA	45.880437	45.90823479471059	Subarray requested	NONE	NONE
[deg] Pointing Dec	-15.647516	-15.64248966506684	Alternating exposures requested	N	N
[deg] Pointing Roll	339.667669	339.8318530953927	[s] Primary exposure time	0.000000	3.1
[mm] SIM focus pos	-0.684267	-0.6828225247311905			
[mm] SIM defocus	0	0.001444936568705701			
[mm] SIM translation stage pos	-190.132523	-190.1425803651734			
[mm] SIM translation stage offset	0	0.01005778216563158			
[s] Observation start time (MET)	280703007.184000	280702016.17424			
Observation start date	2006-11-23T21:02:22	2006-11-23T20:46:56			
[s] Observation end time (MET)	280735007.184000	280736437.72586			
Observation end date	2006-11-24T05:55:42	2006-11-24T06:20:37			
Read mode	TIMED	TIMED			

2.3 Aspect



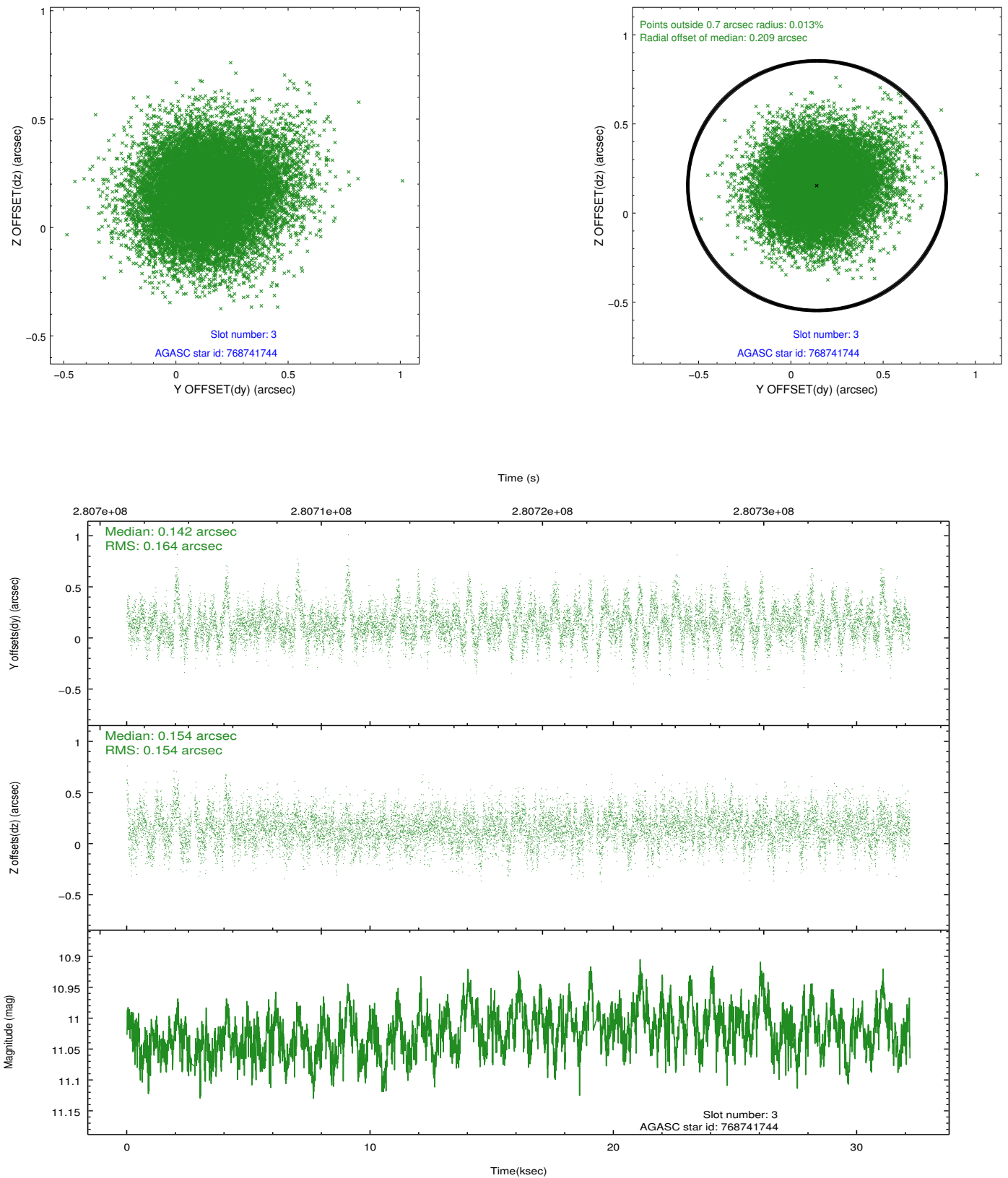


Slot Statistics

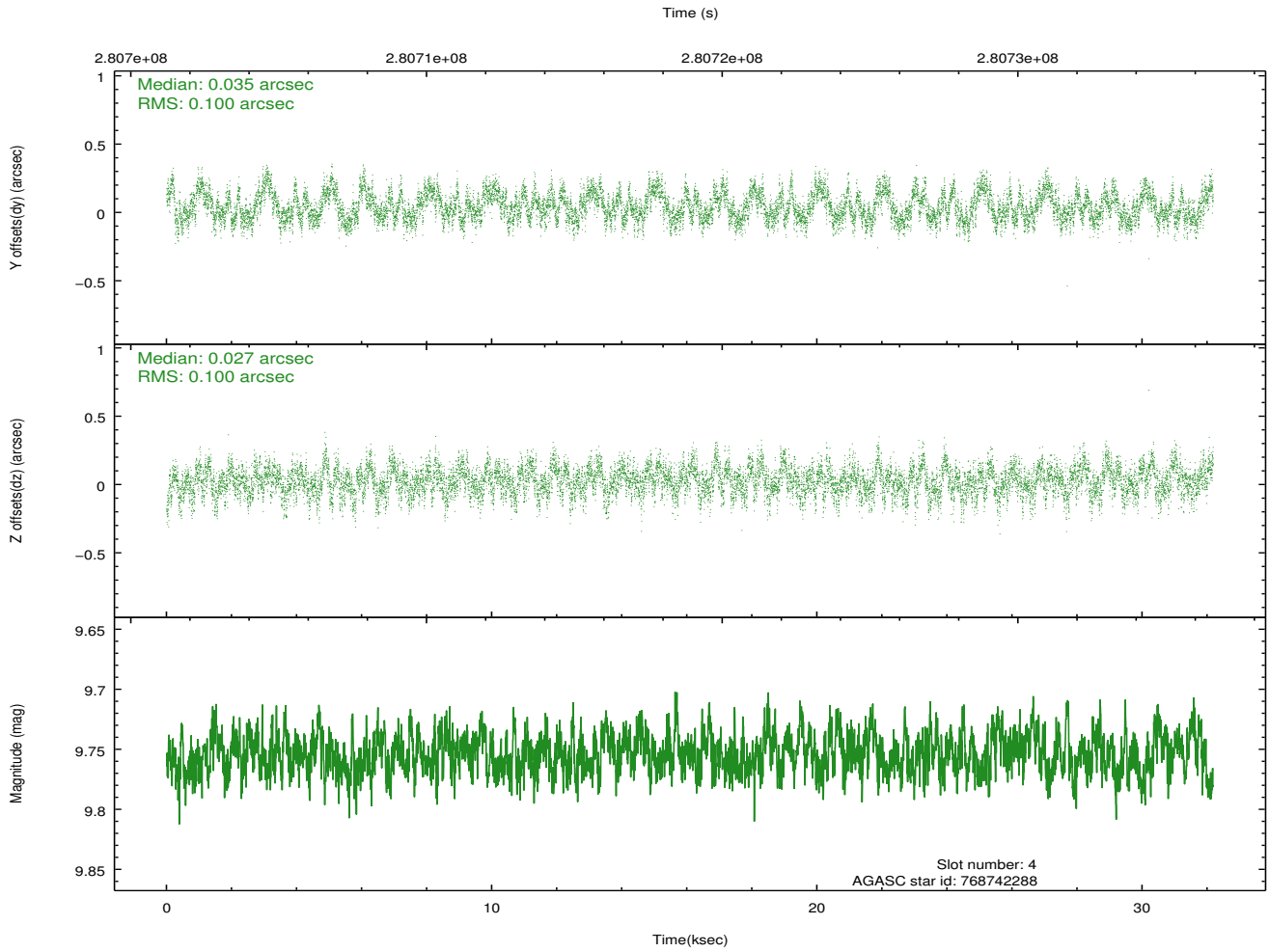
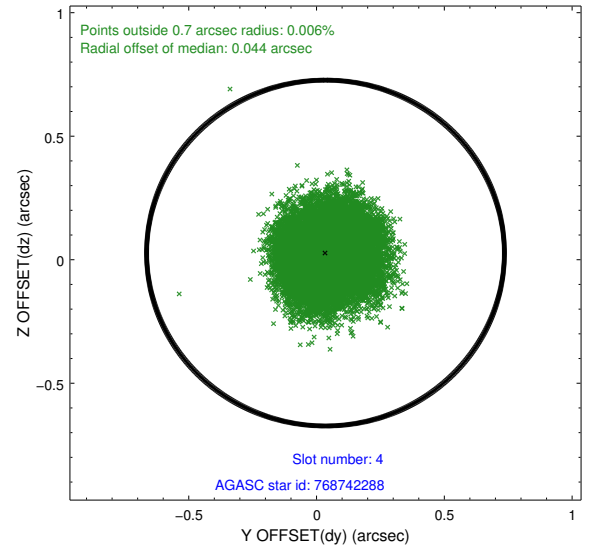
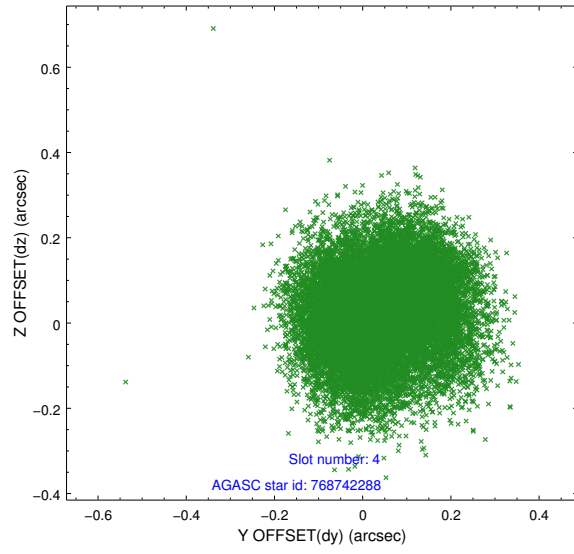
slot	status	id	mag	n_pts	med_dy	med_dz	dr1	dr2	ra	dec	mean_y	mean_z
0	FID	ACIS-S-2	7.12	7848	-0.041	-0.028	0.015	0.031	0.000000	0.000000	-762.24	-1732.81
1	FID	ACIS-S-4	7.22	7846	0.149	0.026	0.013	0.025	0.000000	0.000000	2151.19	175.69
2	FID	ACIS-S-5	7.23	7849	-0.145	0.009	0.017	0.025	0.000000	0.000000	-1815.12	169.38
3	GUIDE	768741744	11.02	15503	0.142	0.154	0.238	0.393	45.347089	-15.969644	-1326.77	-1730.59
4	GUIDE	768742288	9.75	15677	0.035	0.027	0.154	0.236	46.071378	-15.080093	-87.16	2145.84
5	GUIDE	768745184	10.01	15672	-0.080	0.005	0.189	0.304	46.176822	-15.450078	717.73	1023.66
6	GUIDE	768745832	8.41	15692	-0.153	0.057	0.090	0.136	45.636187	-15.272610	-1263.63	971.39
7	GUIDE	768746504	10.57	15300	0.082	-0.205	0.328	0.527	46.022967	-15.652074	469.10	156.23

2.4 Star Slots

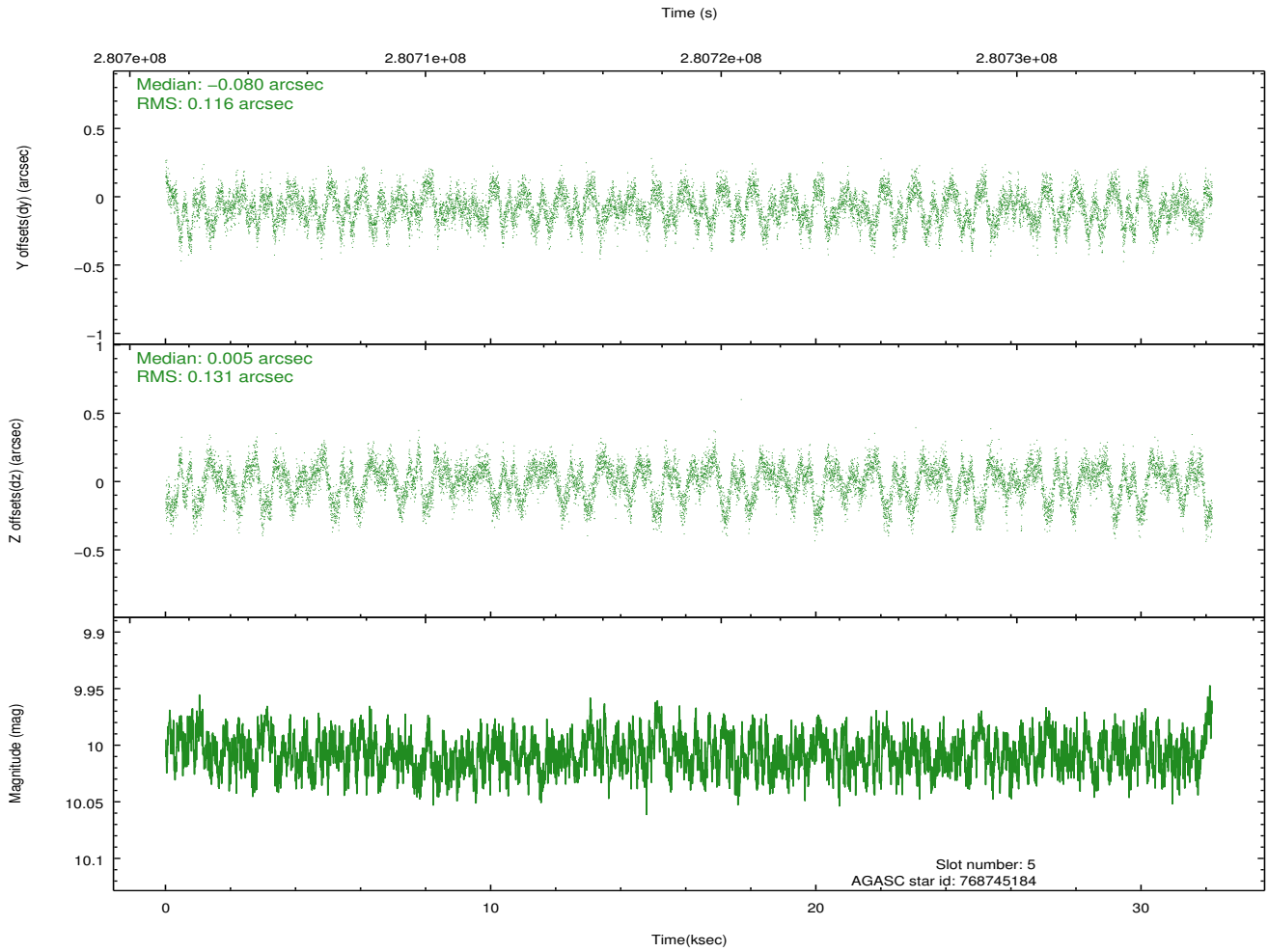
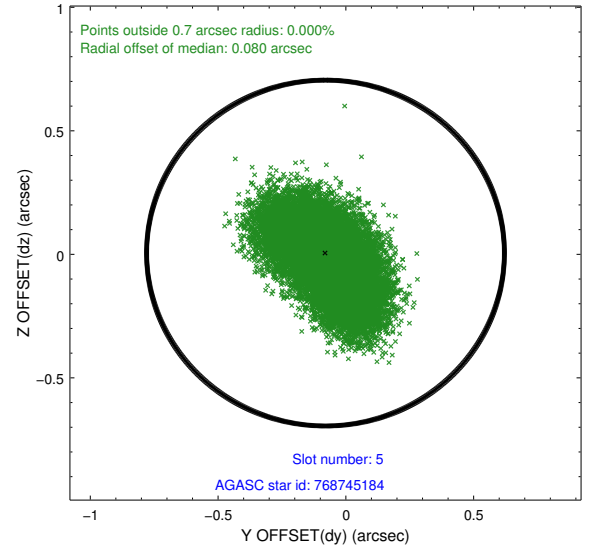
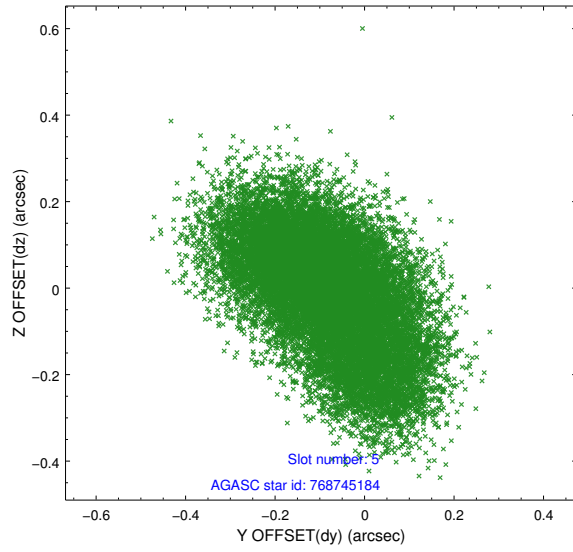
2.4.1 Slot 3



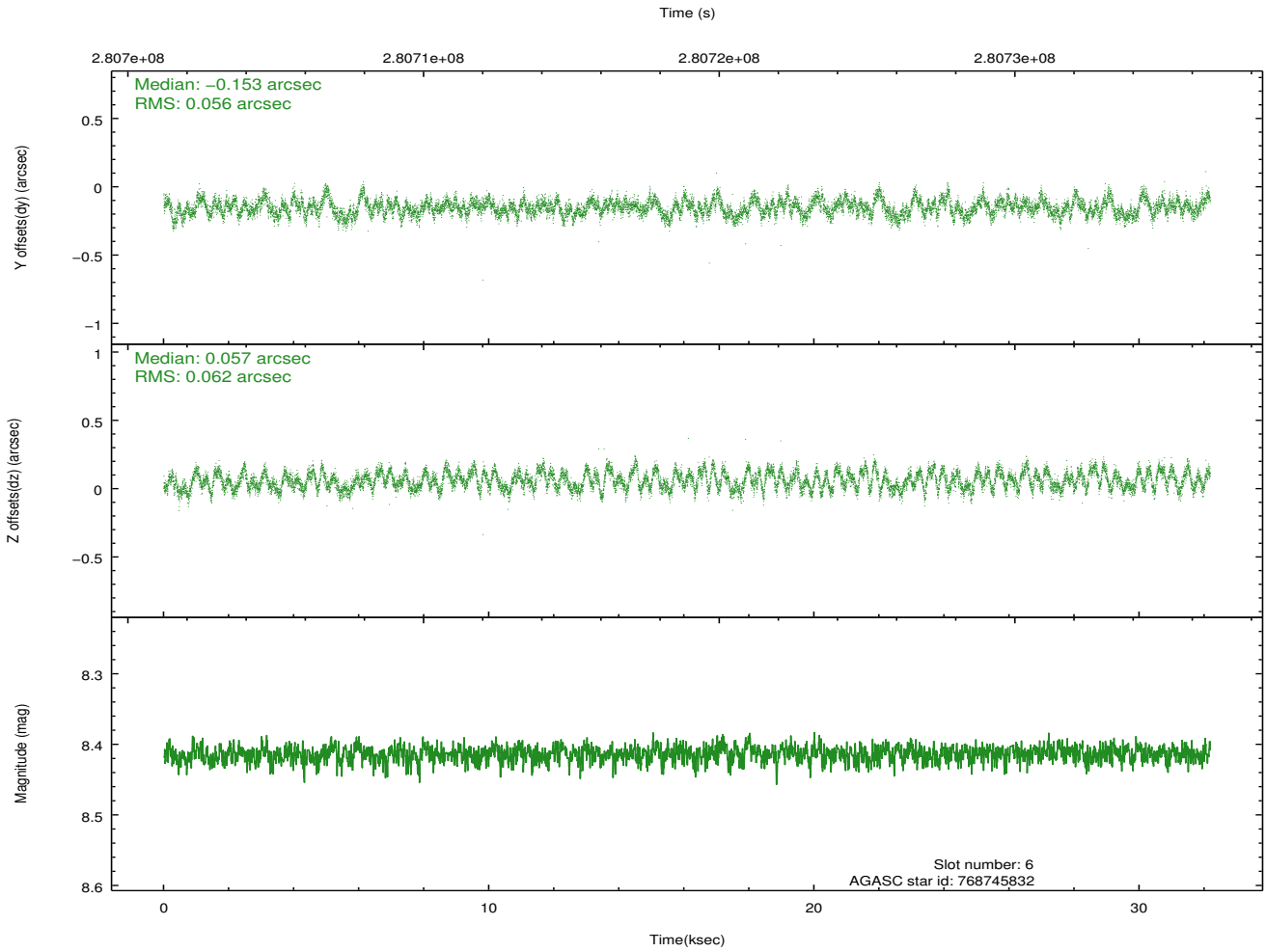
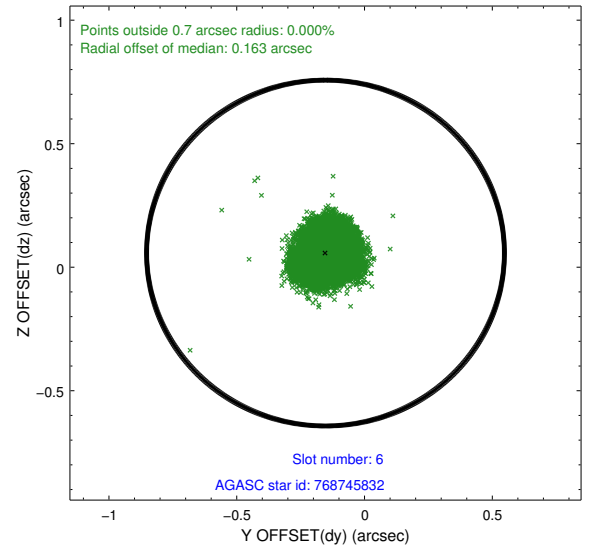
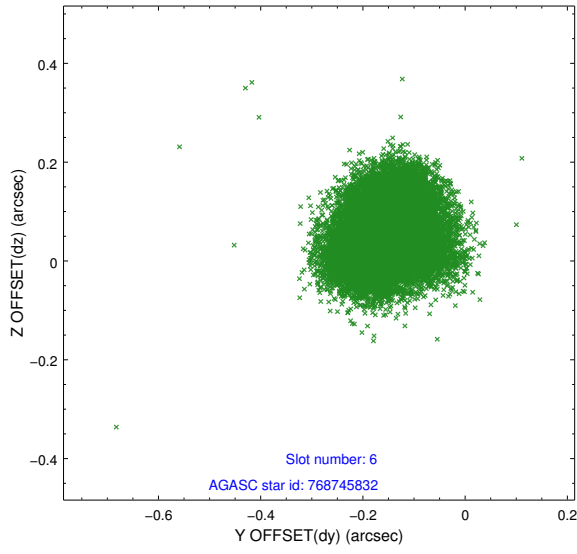
2.4.2 Slot 4



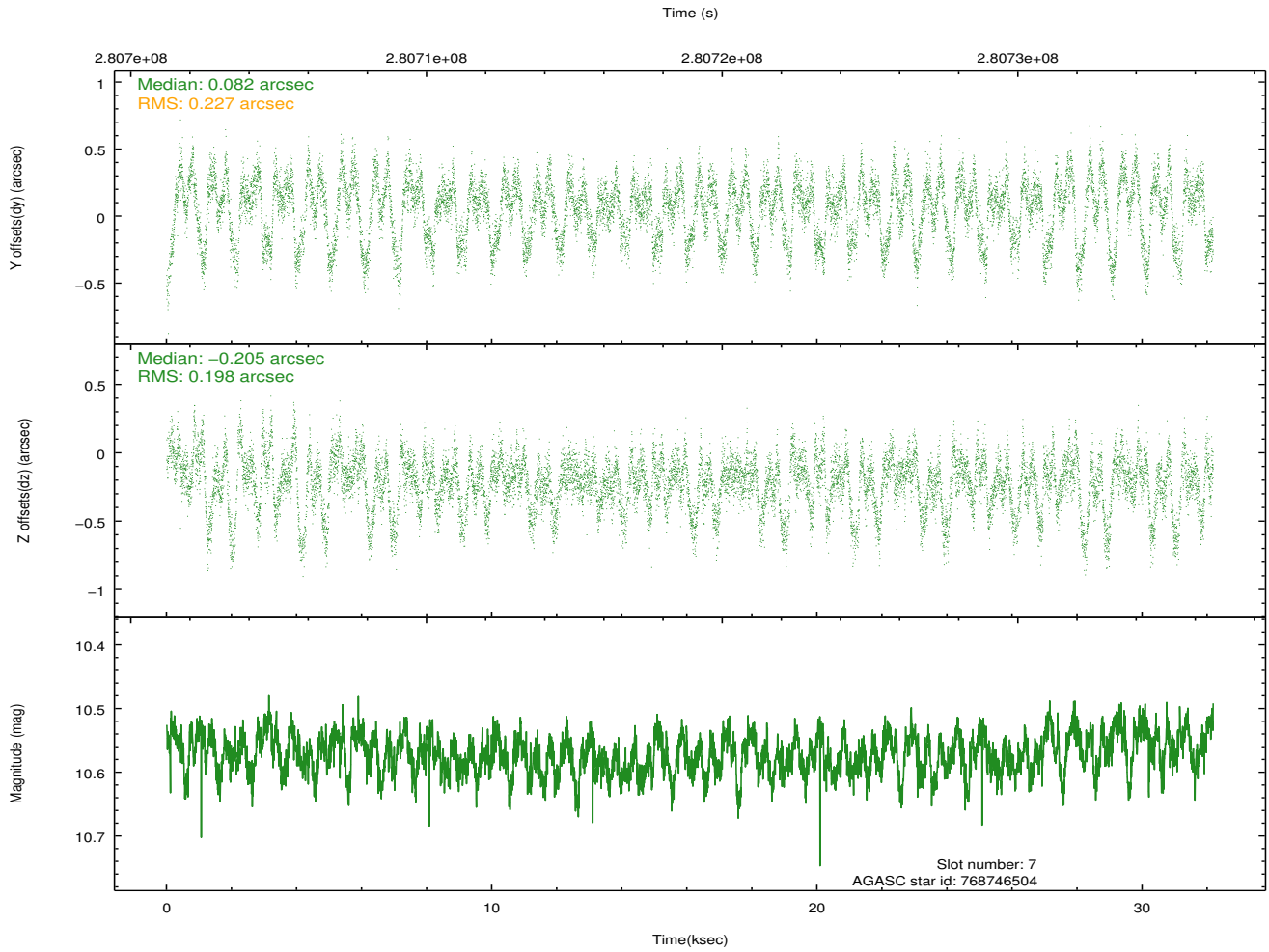
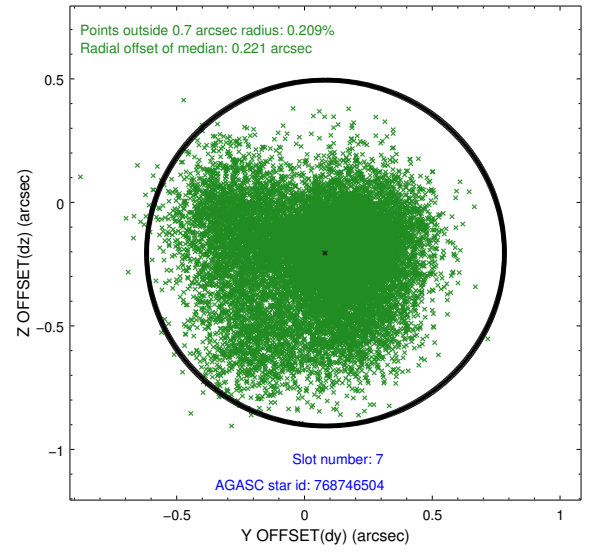
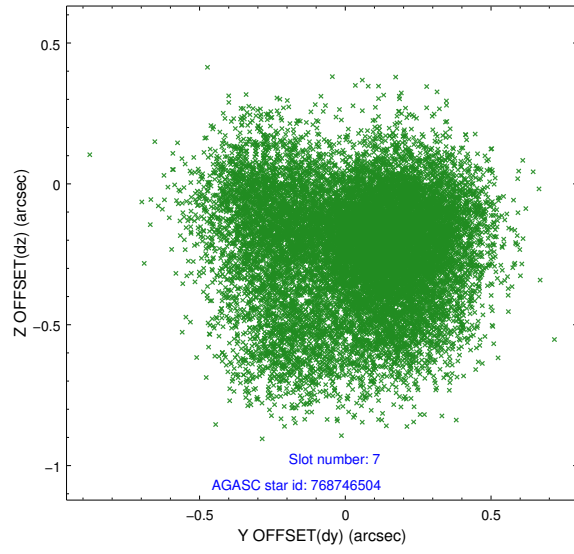
2.4.3 Slot 5



2.4.4 Slot 6

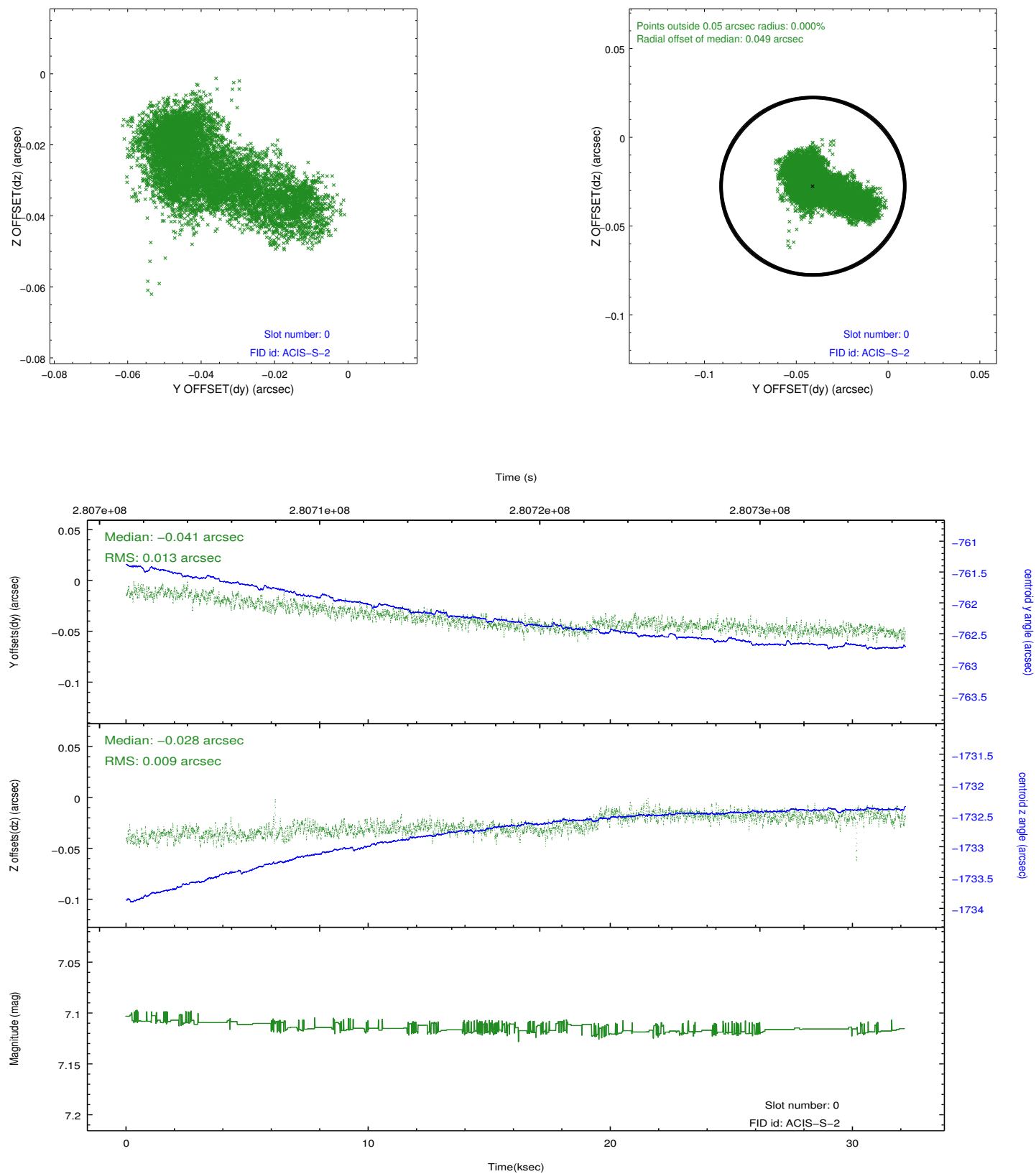


2.4.5 Slot 7

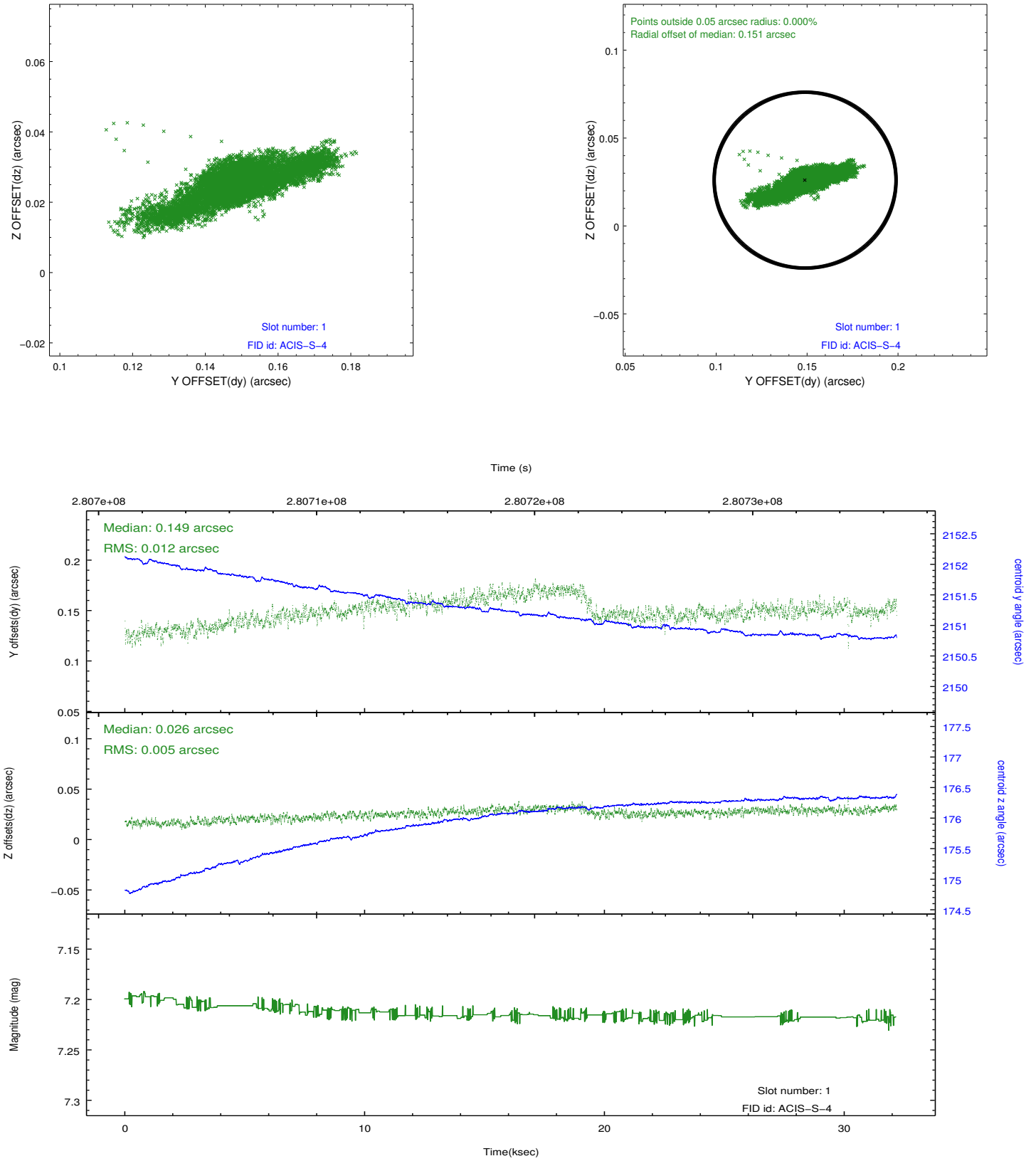


2.5 FID Slots

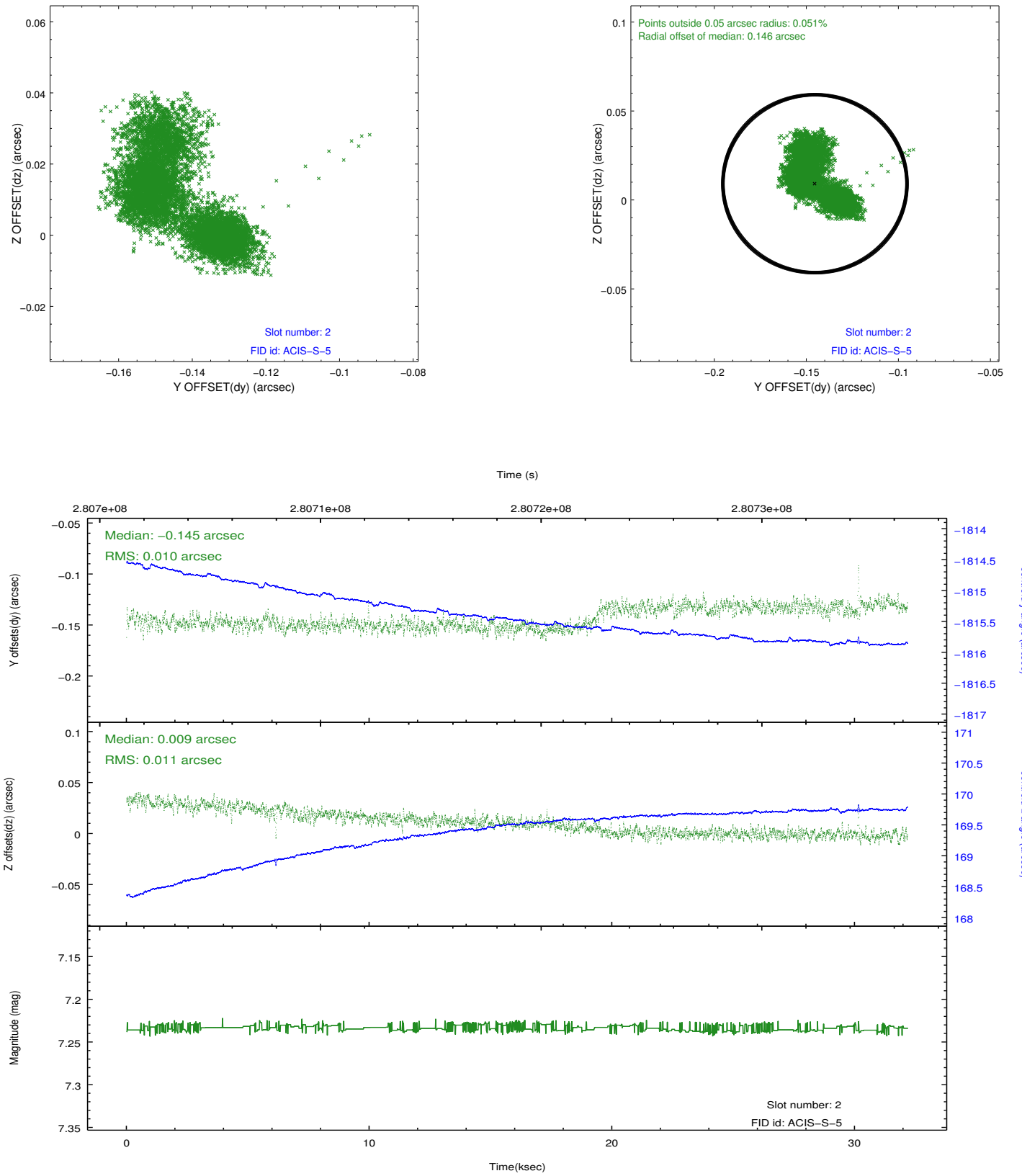
2.5.1 Slot 0



2.5.2 Slot 1



2.5.3 Slot 2



A Summary

A.1 Status

V&V Scientist	Jen Lauer
V&V Date (YYYY-MM-DD)	2012.04.17
V&V Edition	1
V&V Disposition and Status	OK
V&V Charge Time	32.1717592

A.2 Comments