

V&V Reference Report

L2 ASCDS Version : 8.4.4

Observation 8122 - L2 Version 3
Chandra X-Ray Center

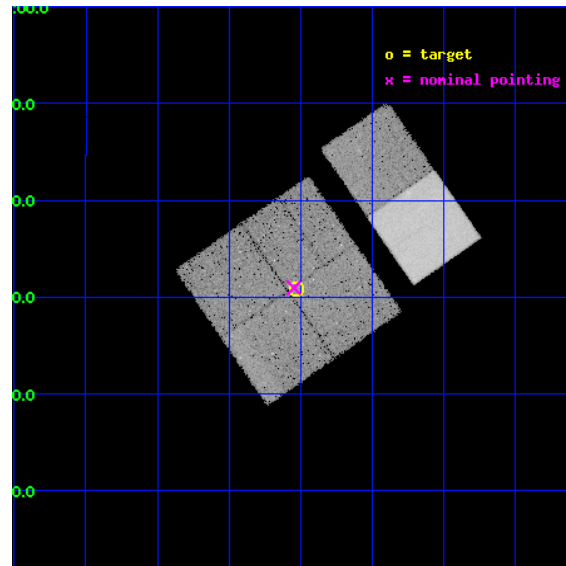
L2 Processing Date : Apr 18 2012

Contents

1	Front	2
2	OBI	3
2.1	OBI	3
2.1.1	Images	3
2.1.2	Bias	3
2.1.3	Parameters	4
2.1.4	Events	4
2.2	Compared Parameters	5
2.3	Aspect	6
2.4	Star Slots	9
2.4.1	Slot 3	9
2.4.2	Slot 4	10
2.4.3	Slot 5	11
2.4.4	Slot 6	12
2.4.5	Slot 7	13
2.5	FID Slots	14
2.5.1	Slot 0	14
2.5.2	Slot 1	15
2.5.3	Slot 2	16
A	Summary	17
A.1	Status	17
A.2	Comments	17

1 Front

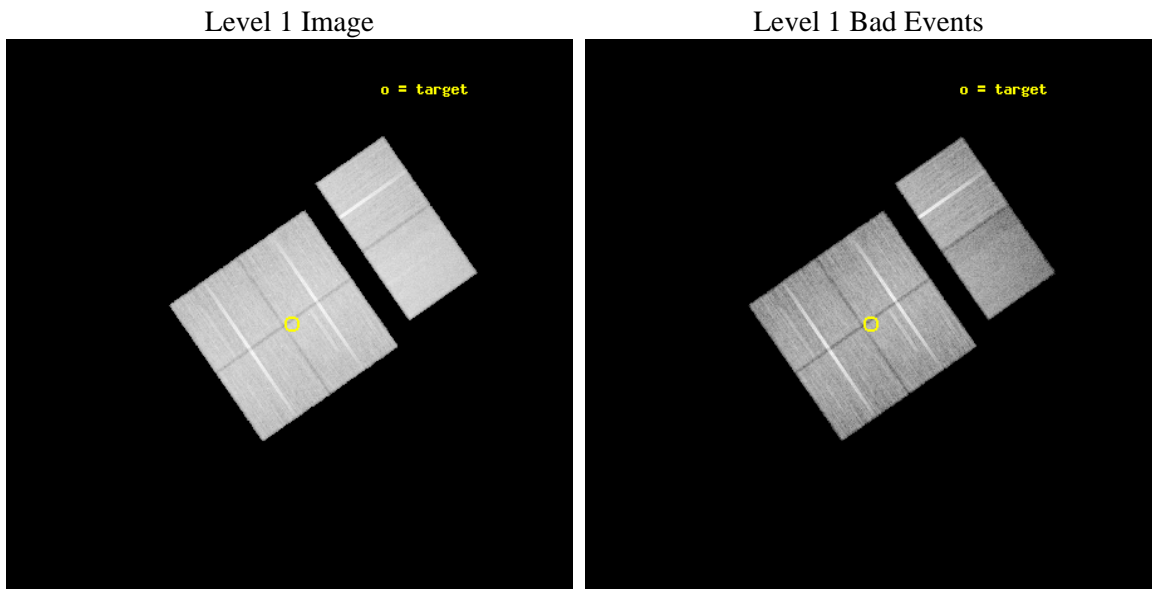
seq_num	900663	Sequence number
obs_id	8122	Observation id
title	THE CHANDRA-COSMOS SURVEY	Proposal title
observer	Dr. Martin Elvis	Principal investigator
object	C-COSMOS1-4	Source name
dtcycle	0	
cycle	P	events from which exps? Prim/Second/Both
ra_targ	150.132725	Observer's specified target RA [deg]
dec_targ	2.513478	Observer's specified target Dec [deg]
ra_nom	150.13666339627	Nominal RA [deg]
dec_nom	2.5160564881336	Nominal Dec [deg]
roll_nom	55.216009257743	Nominal Roll [deg]
revision	3	Processing version of data
ontime	29177.599891365	Sum of GTIs [s]
livetime	28808.135552899	Livetime [s]
ontime0	29174.358970702	Sum of GTIs [s]
ontime1	29177.599891365	Sum of GTIs [s]
ontime2	29167.876900434	Sum of GTIs [s]
ontime3	29177.599891365	Sum of GTIs [s]
ontime6	29171.11788094	Sum of GTIs [s]
ontime7	29177.599891365	Sum of GTIs [s]
l2events	201442	Number of level 2 events



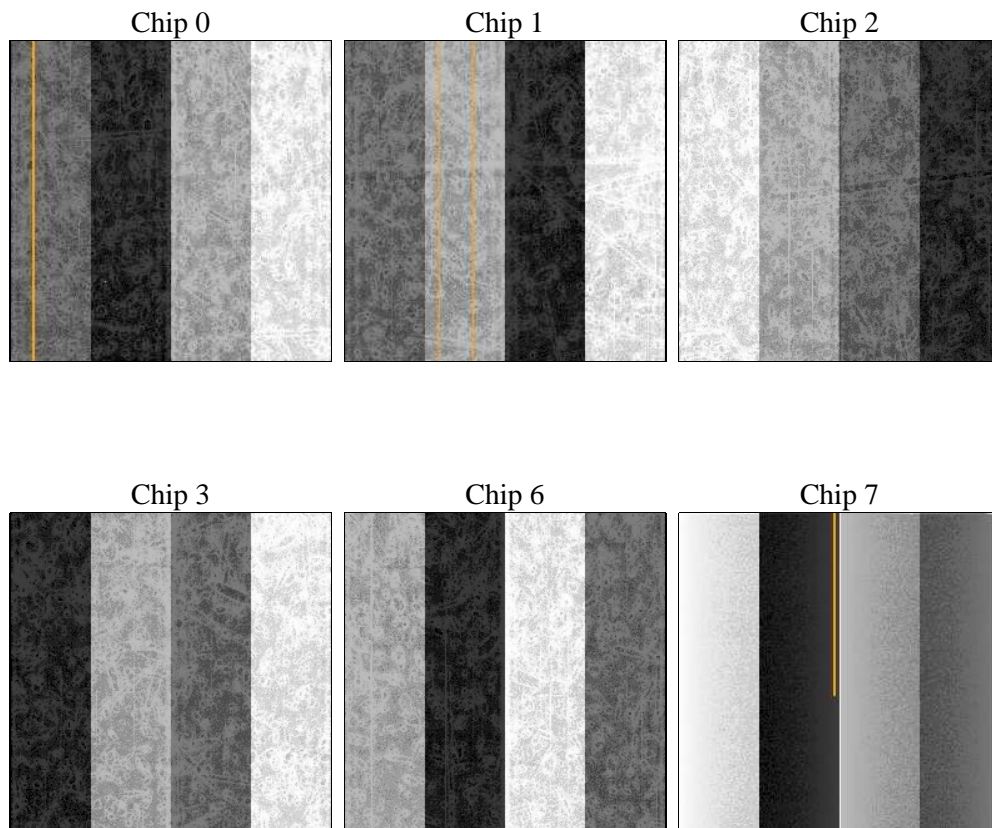
2 OBI

2.1 OBI

2.1.1 Images



2.1.2 Bias



2.1.3 Parameters

obi_num	3	Obi number	sched_exp_time	29000.000000	[s] Scheduled observation exposure time
ascdsver	8.4.4	Processing system revision	ontime	29177.599891365	Sum of GTIs [s]
caldsver	4.4.9	 	ontime0	29174.358970702	Sum of GTIs [s]
date	2012-04-18T14:48:50	Date and time of file creation	ontime1	29177.599891365	Sum of GTIs [s]
revision	3	Processing version of data	ontime2	29167.876900434	Sum of GTIs [s]
			ontime3	29177.599891365	Sum of GTIs [s]
			ontime6	29171.11788094	Sum of GTIs [s]
			ontime7	29177.599891365	Sum of GTIs [s]
			l1events	1329871	Number of level 1 events

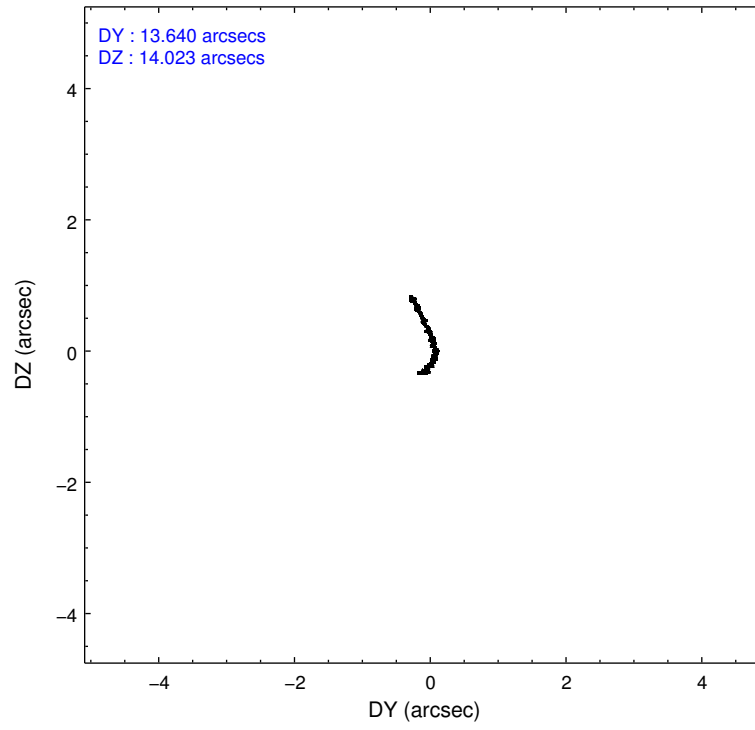
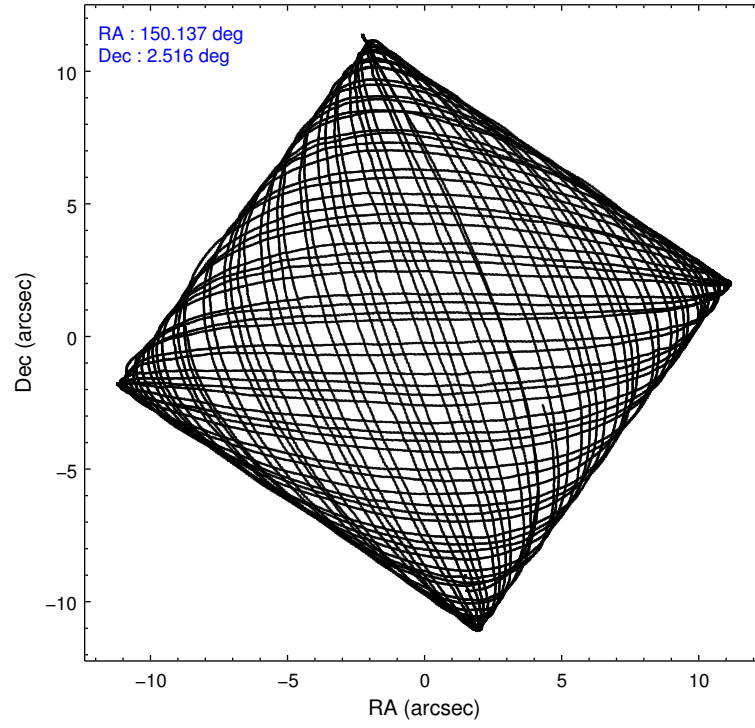
2.1.4 Events

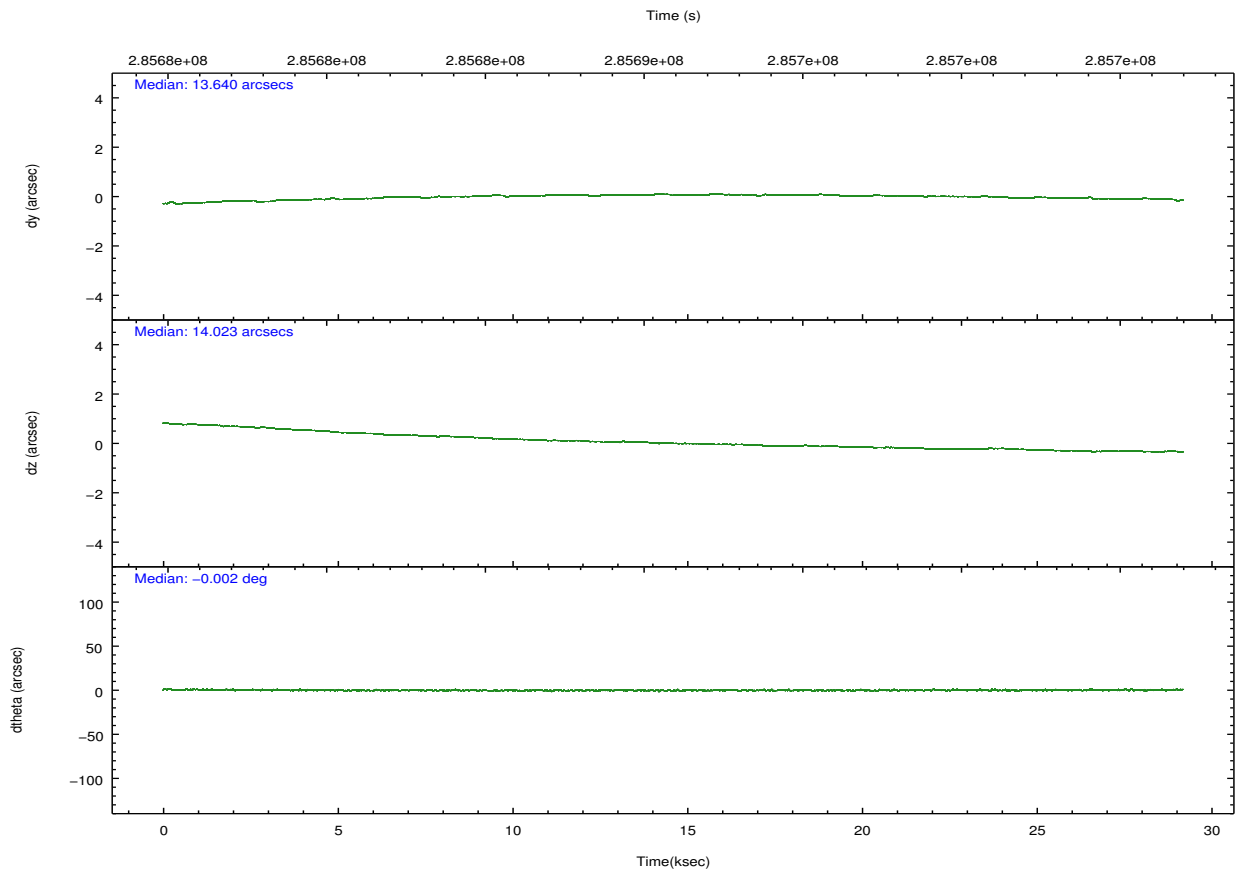
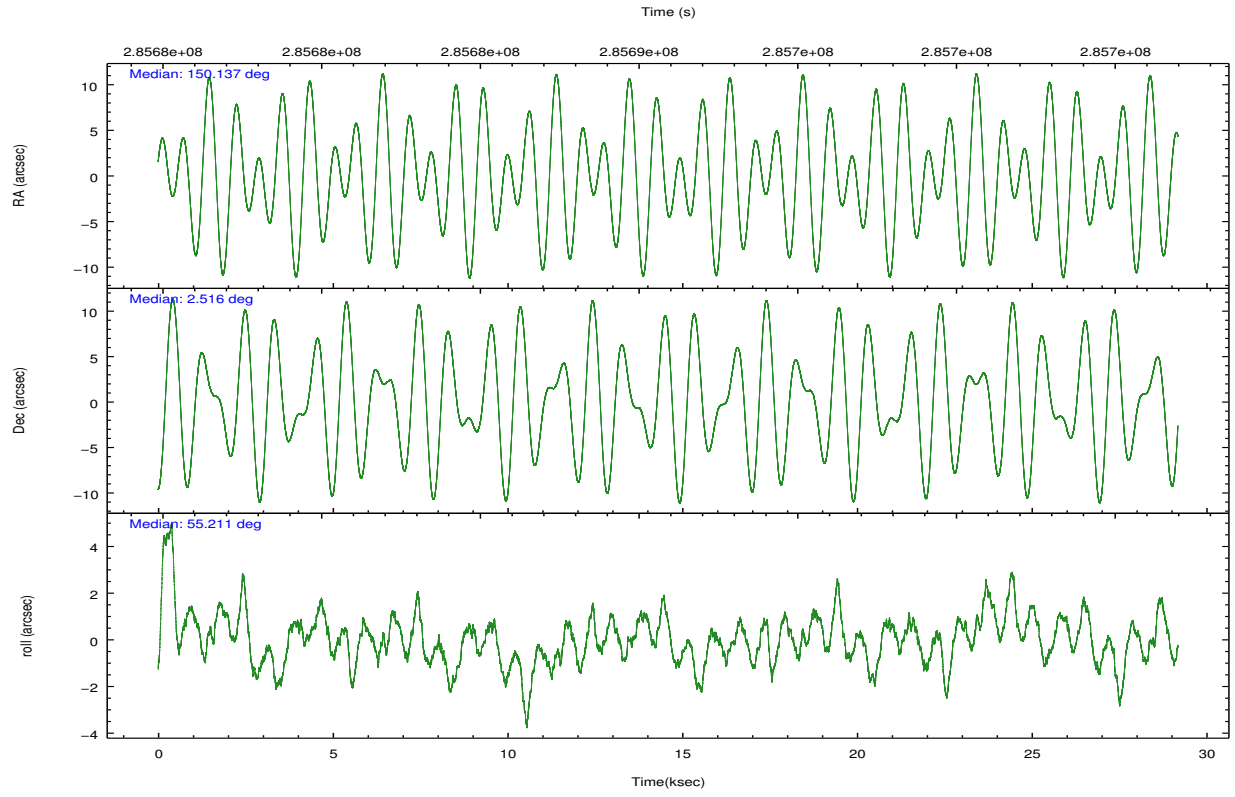
	ccd 0	ccd 1	ccd 2	ccd 3	ccd 6	ccd 7		ccd 0	ccd 1	ccd 2	ccd 3	ccd 6	ccd 7
level 1 events	207360	204802	223732	219491	227706	246780	grade 0 events	7492	8853	7969	7176	7758	10394
rejected events	185687	180253	202254	199248	205002	133909		3%	4%	3%	3%	3%	4%
rejected %	89%	88%	90%	90%	90%	54%	grade 1 events	118	106	130	102	118	299
								0%	0%	0%	0%	0%	0%
							grade 2 events	5246	5305	5034	4411	5101	22751
								2%	2%	2%	2%	2%	9%
							grade 3 events	2455	2741	2281	2341	2454	10607
								1%	1%	1%	1%	1%	4%
							grade 4 events	2278	2786	2412	2251	2458	10437
								1%	1%	1%	1%	1%	4%
							grade 5 events	7412	8219	7136	8943	8960	26143
								3%	4%	3%	4%	3%	10%
							grade 6 events	4228	4908	3801	4081	4961	58808
								2%	2%	1%	1%	2%	23%
							grade 7 events	178131	171884	194969	190186	195896	107341
								85%	83%	87%	86%	86%	43%

2.2 Compared Parameters

Parameter	Planned	Actual	Parameter	Planned	Actual
Instrument	ACIS	ACIS	Obspar format version number	7	7
Detector	ACIS-012367	ACIS-012367	Obspar file type	PREDICTED	ACTUAL
Grating	NONE	NONE	Obspar update status	NONE	UPDATED
Data mode	VFAINT	VFAINT	CCD I0 on	Y	Y
Observation mode	POINTING	POINTING	CCD I1 on	Y	Y
[deg] Pointing RA	150.134477	150.1366633962696	CCD I2 on	Y	Y
[deg] Pointing Dec	2.488656	2.516056488133554	CCD I3 on	Y	Y
[deg] Pointing Roll	55.007422	55.2160092577426	CCD S0 on	N	N
[mm] SIM focus pos	-0.782348	-0.7809083437167272	CCD S1 on	N	N
[mm] SIM defocus	0	0.001439871863259334	CCD S2 on	O1	Y
[mm] SIM translation stage pos	-233.592463	-233.5874344608287	CCD S3 on	O2	Y
[mm] SIM translation stage offset	0	-0.005018542100998502	CCD S4 on	N	N
[s] Observation start time (MET)	285676488.184000	285675399.94713	CCD S5 on	N	N
Observation start date	2007-01-20T10:33:43	2007-01-20T10:16:39	Number of optional ACIS chips dropped	0	0
[s] Observation end time (MET)	285705488.184000	285705840.91107	On-chip summing requested	N	N
Observation end date	2007-01-20T18:37:03	2007-01-20T18:44:00	Subarray requested	NONE	NONE
Read mode	TIMED	TIMED	Alternating exposures requested	N	N
			[s] Primary exposure time	0.000000	3.2

2.3 Aspect



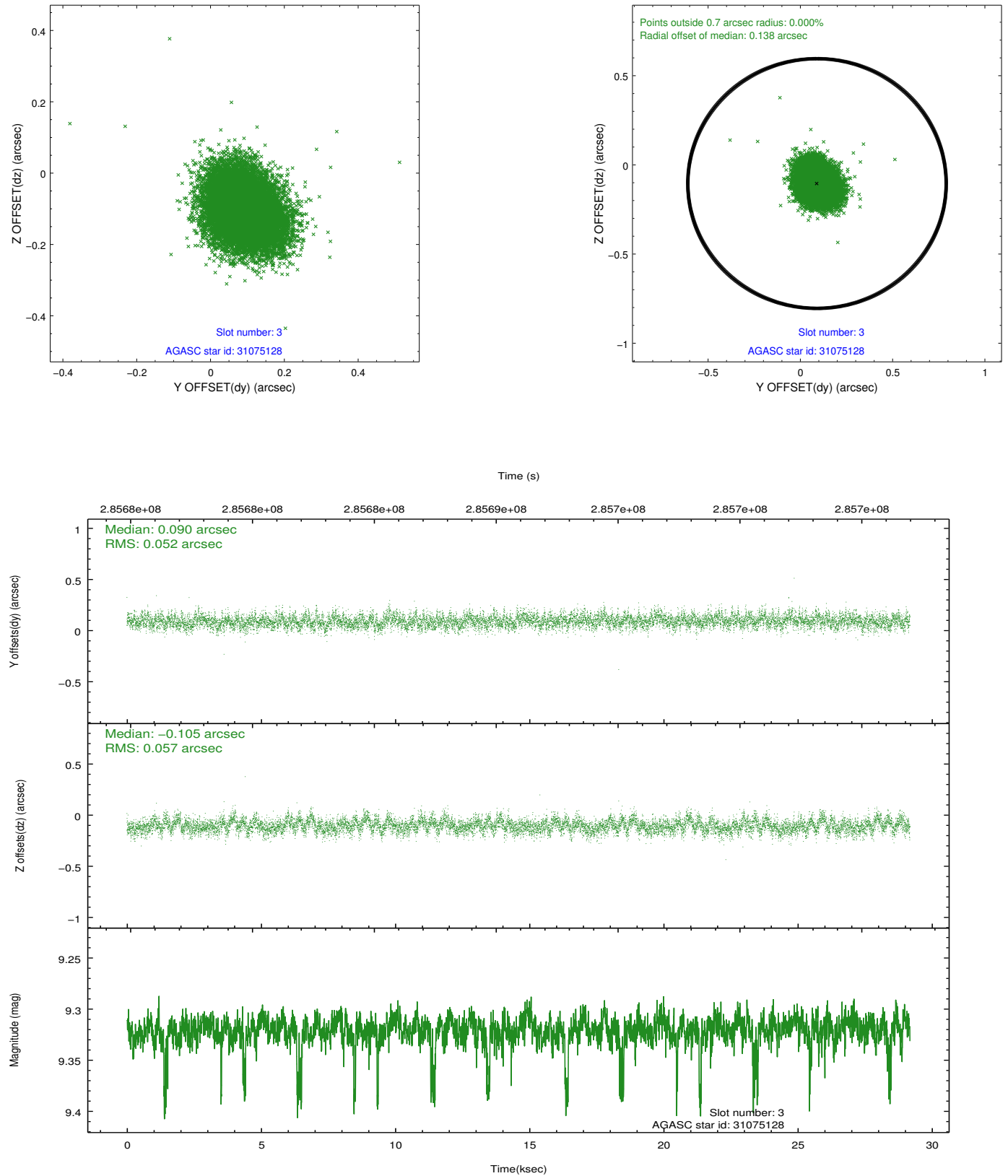


Slot Statistics

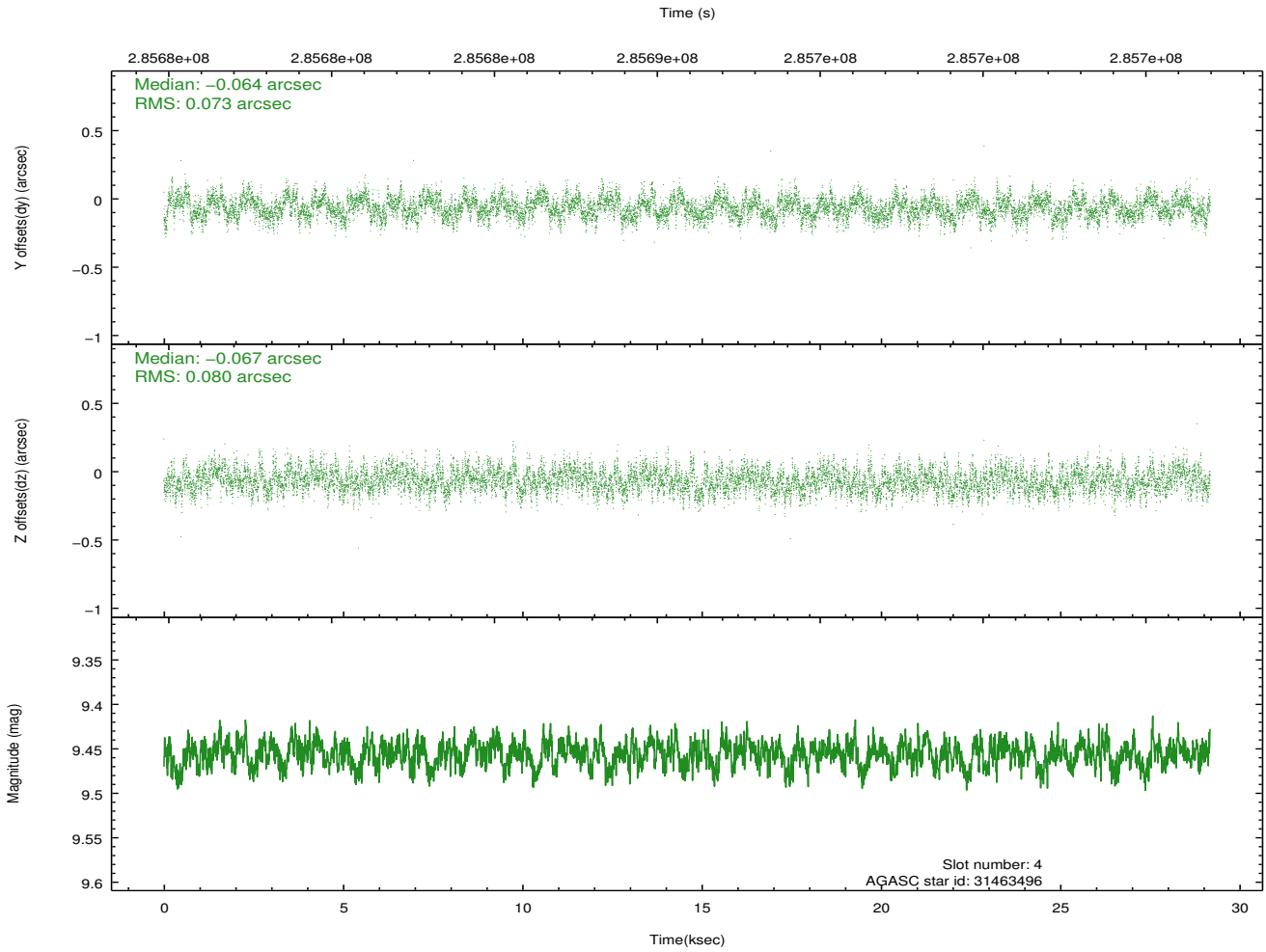
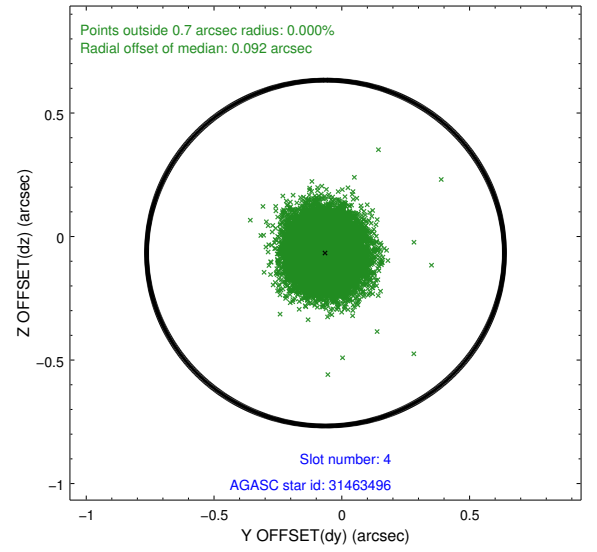
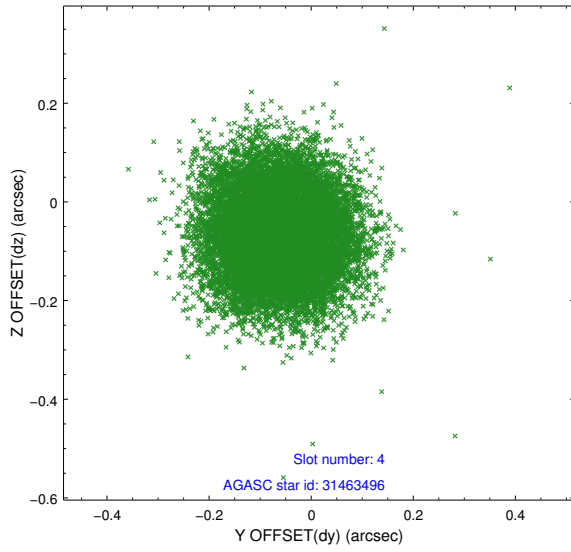
slot	status	id	mag	n_pts	med_dy	med_dz	dr1	dr2	ra	dec	mean_y	mean_z
0	FID	ACIS-I-1	7.24	7118	0.037	0.008	0.016	0.029	0.000000	0.000000	925.93	-837.67
1	FID	ACIS-I-5	7.23	7118	-0.220	0.042	0.009	0.015	0.000000	0.000000	-1822.41	1059.79
2	FID	ACIS-I-6	7.25	7118	0.091	0.018	0.015	0.032	0.000000	0.000000	391.42	1704.38
3	GUIDE	31075128	9.32	14213	0.090	-0.105	0.082	0.135	149.584516	2.364347	-1500.49	1364.10
4	GUIDE	31463496	9.46	14209	-0.064	-0.067	0.116	0.182	149.845020	2.964001	805.15	1834.19
5	GUIDE	32374896	9.21	14225	-0.100	0.160	0.103	0.172	150.682269	2.512794	1201.61	-1563.56
6	GUIDE	32387968	9.21	14223	-0.093	-0.074	0.087	0.140	150.106347	3.119099	1801.55	1384.51
7	GUIDE	31076560	9.66	14159	0.165	0.092	0.121	0.194	149.884782	2.009277	-1928.53	-253.77

2.4 Star Slots

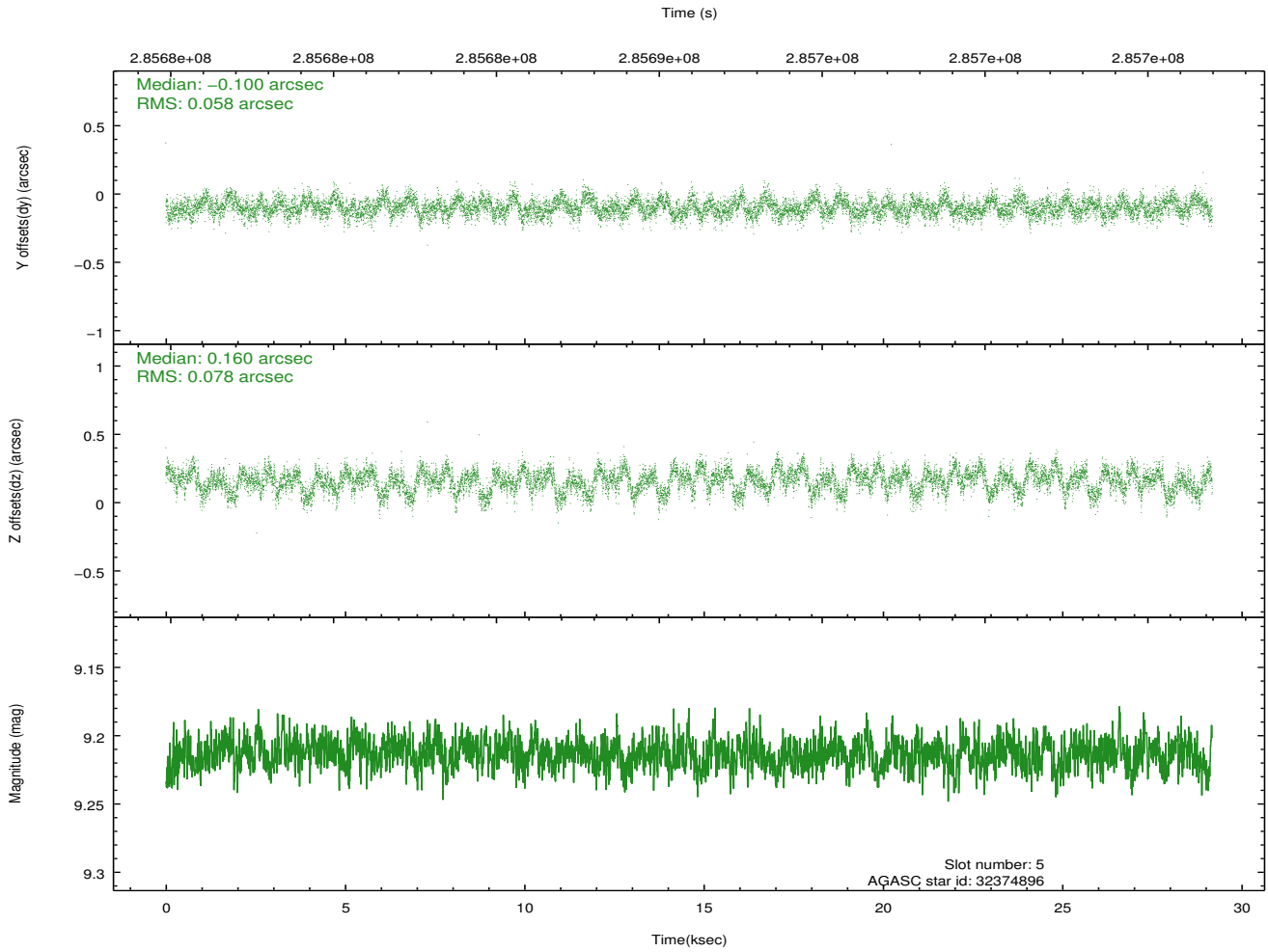
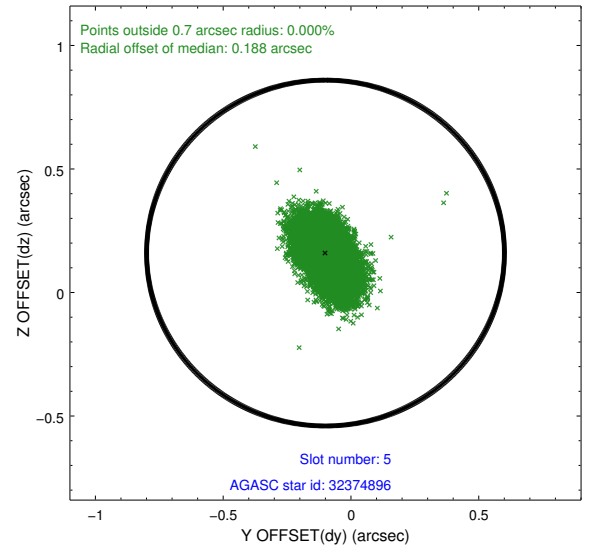
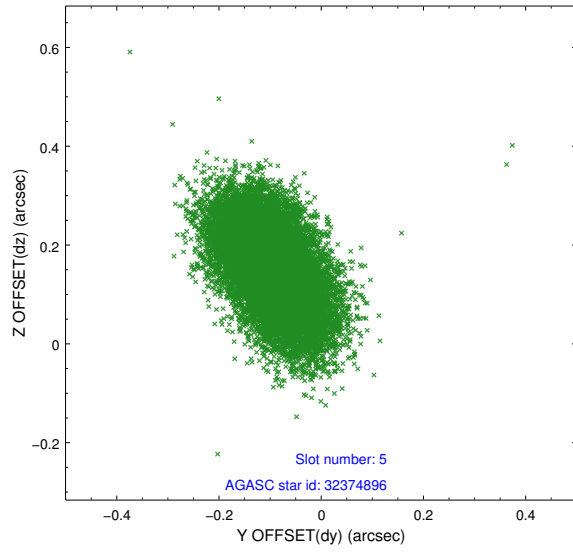
2.4.1 Slot 3



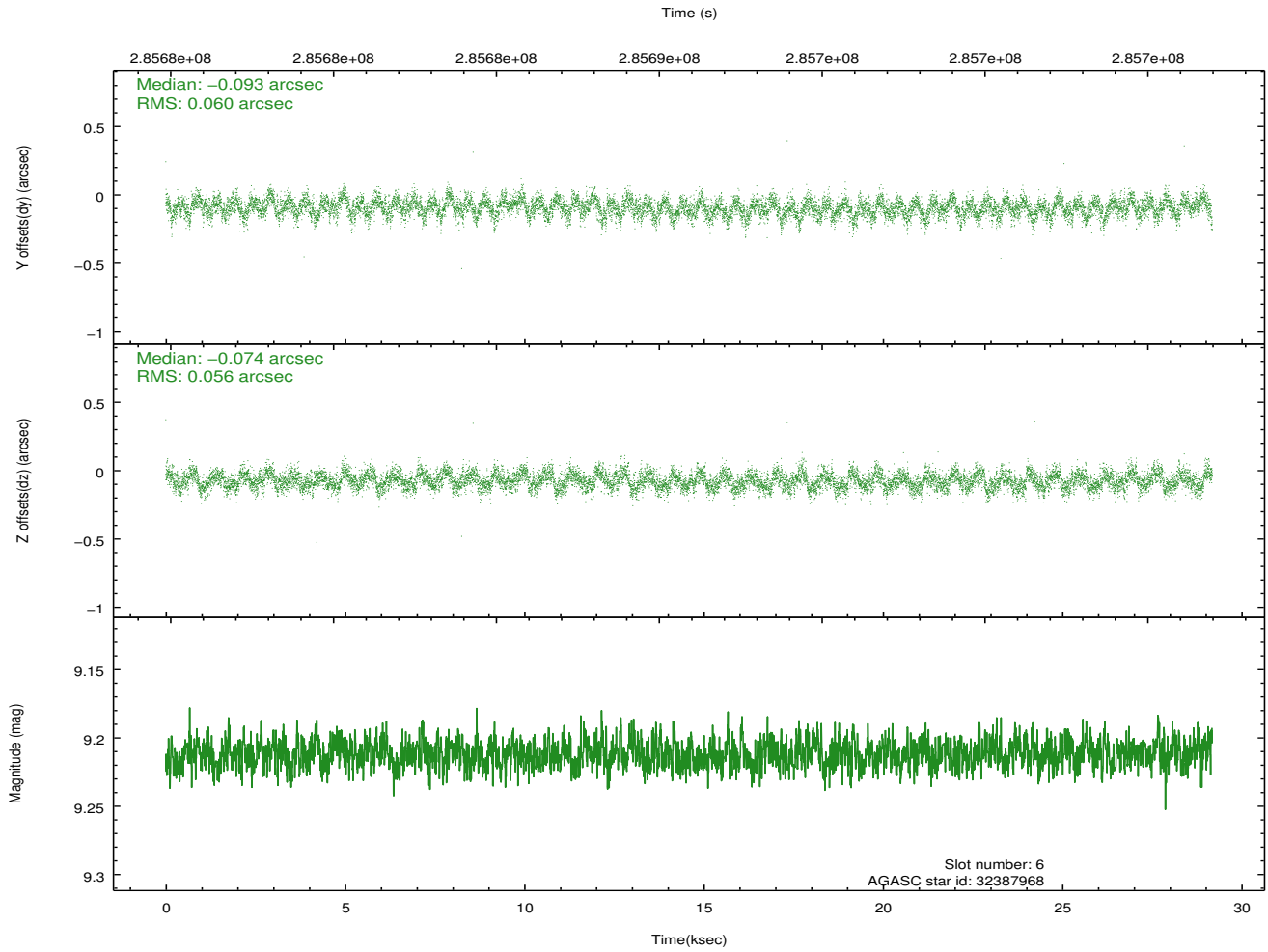
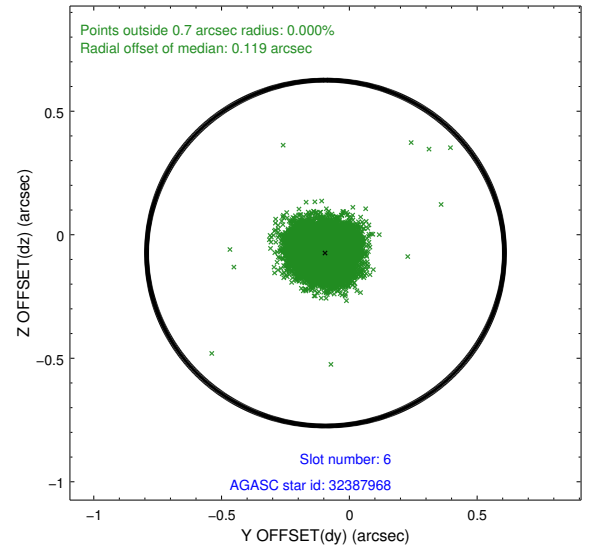
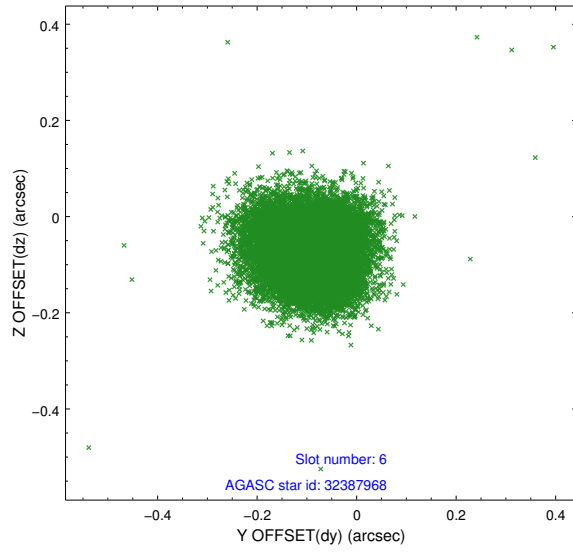
2.4.2 Slot 4



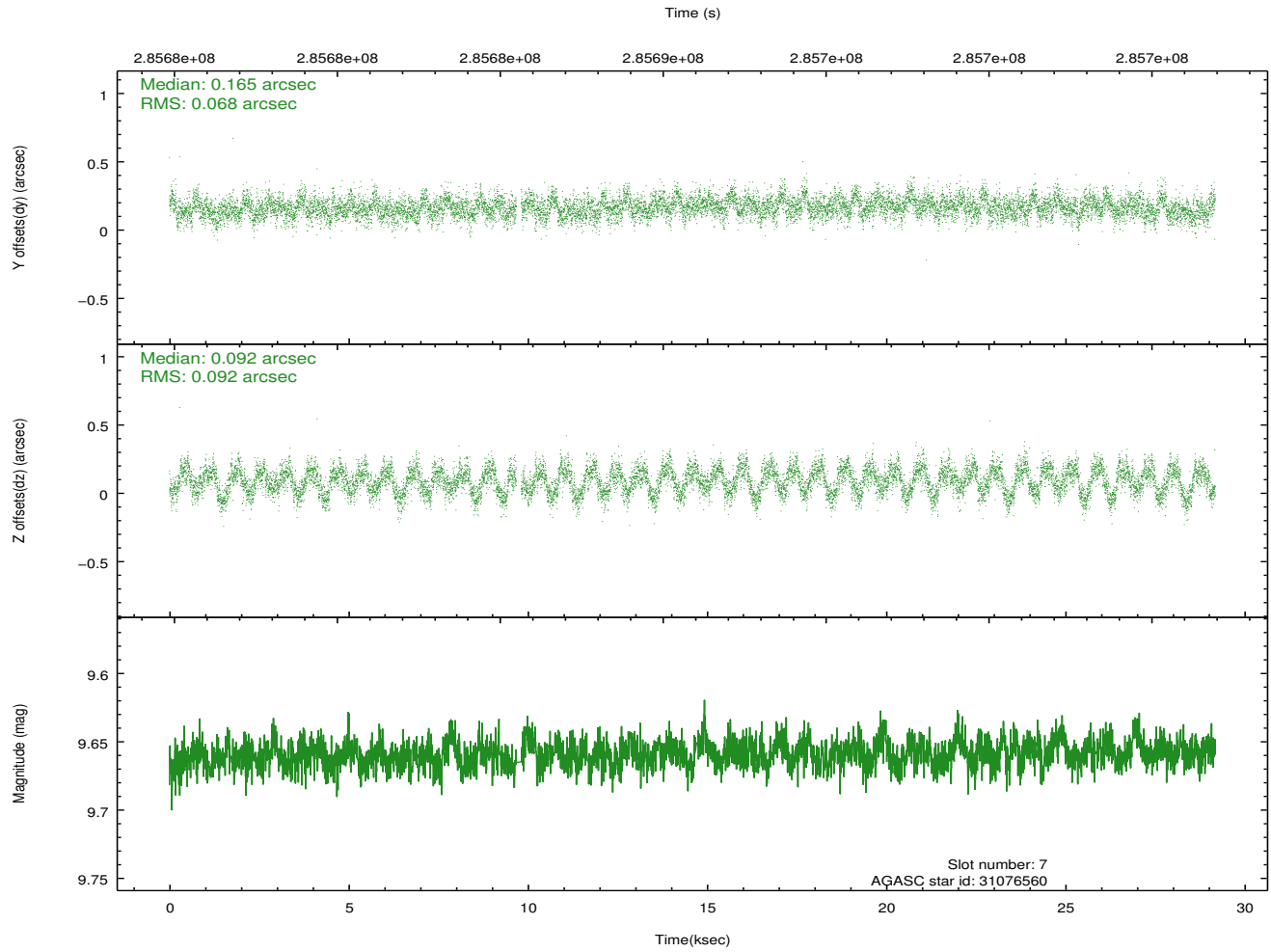
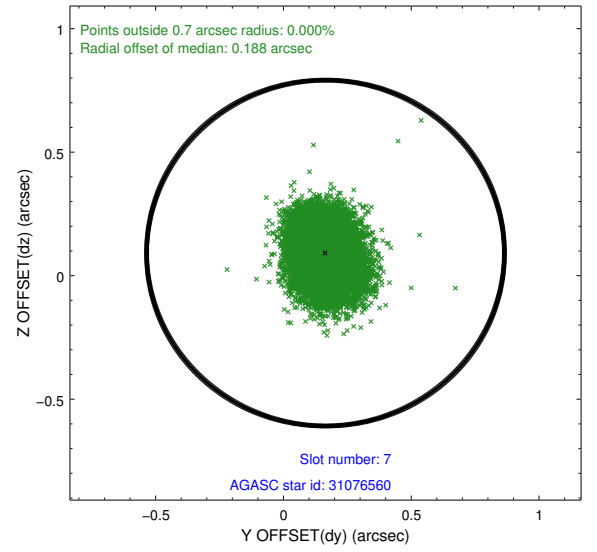
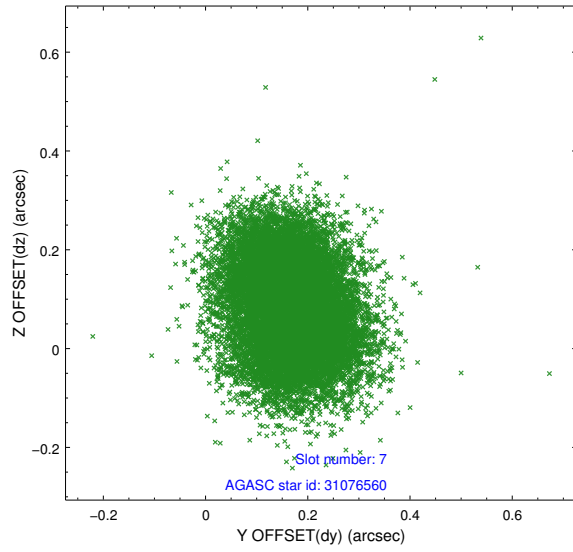
2.4.3 Slot 5



2.4.4 Slot 6

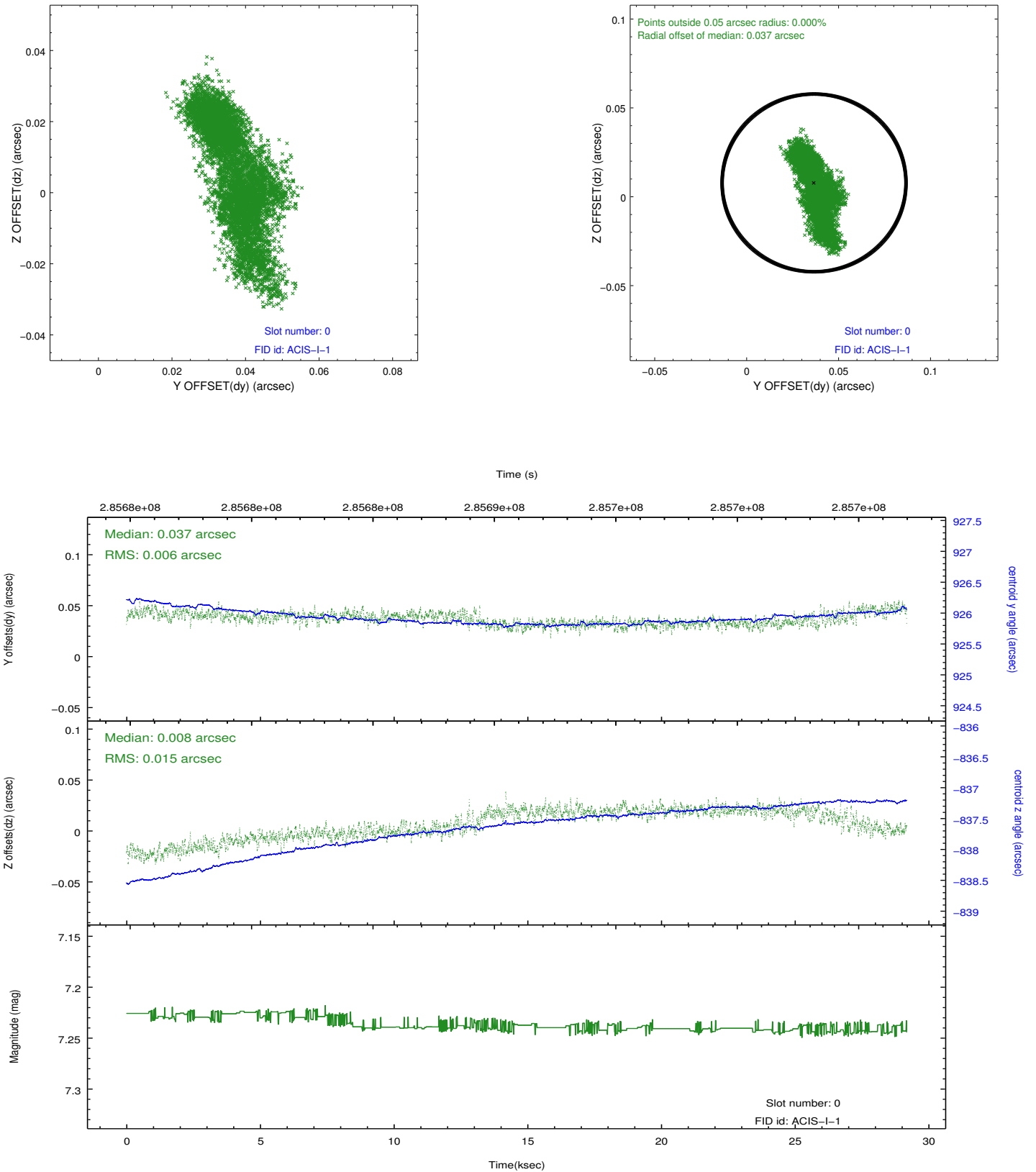


2.4.5 Slot 7

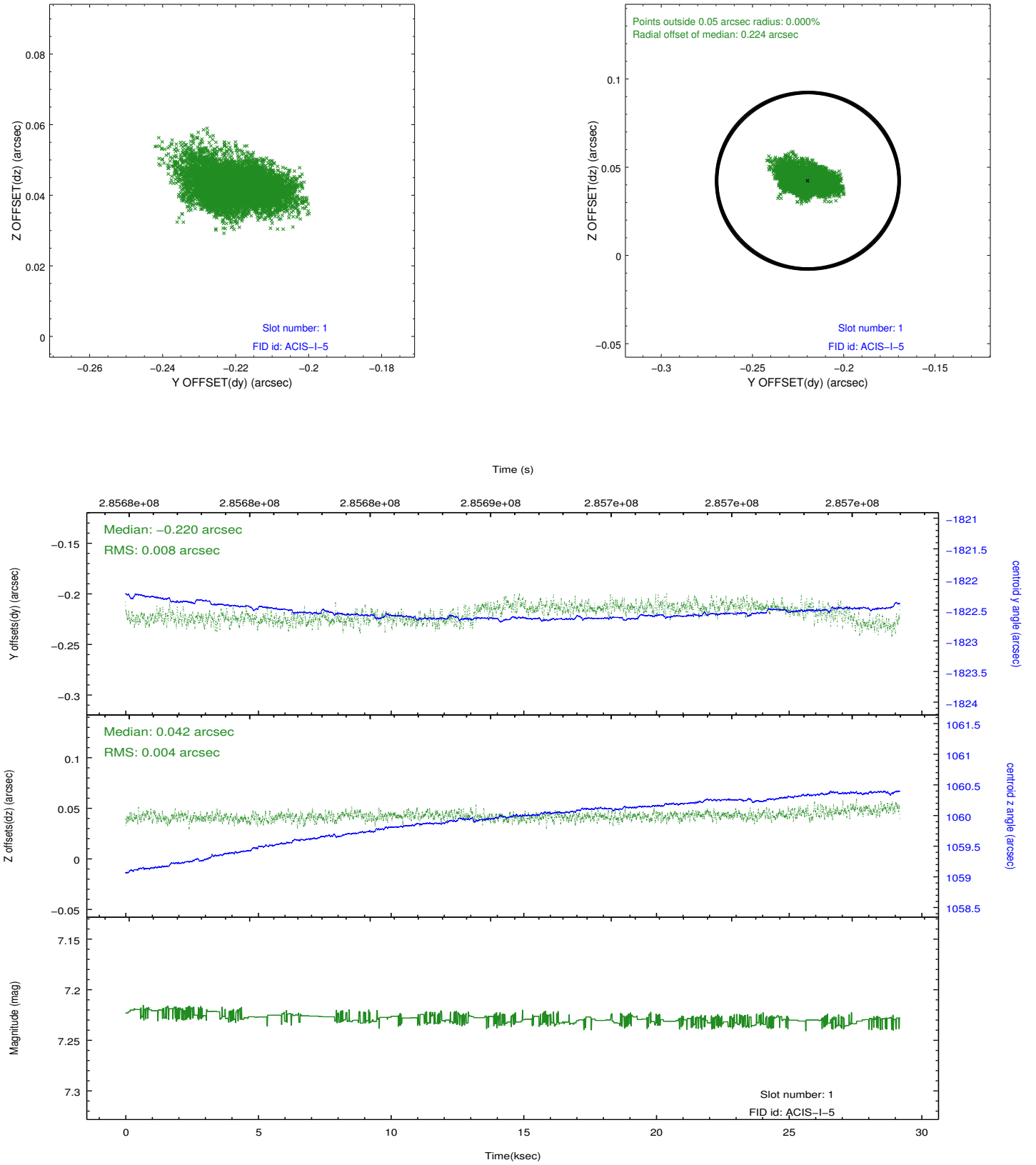


2.5 FID Slots

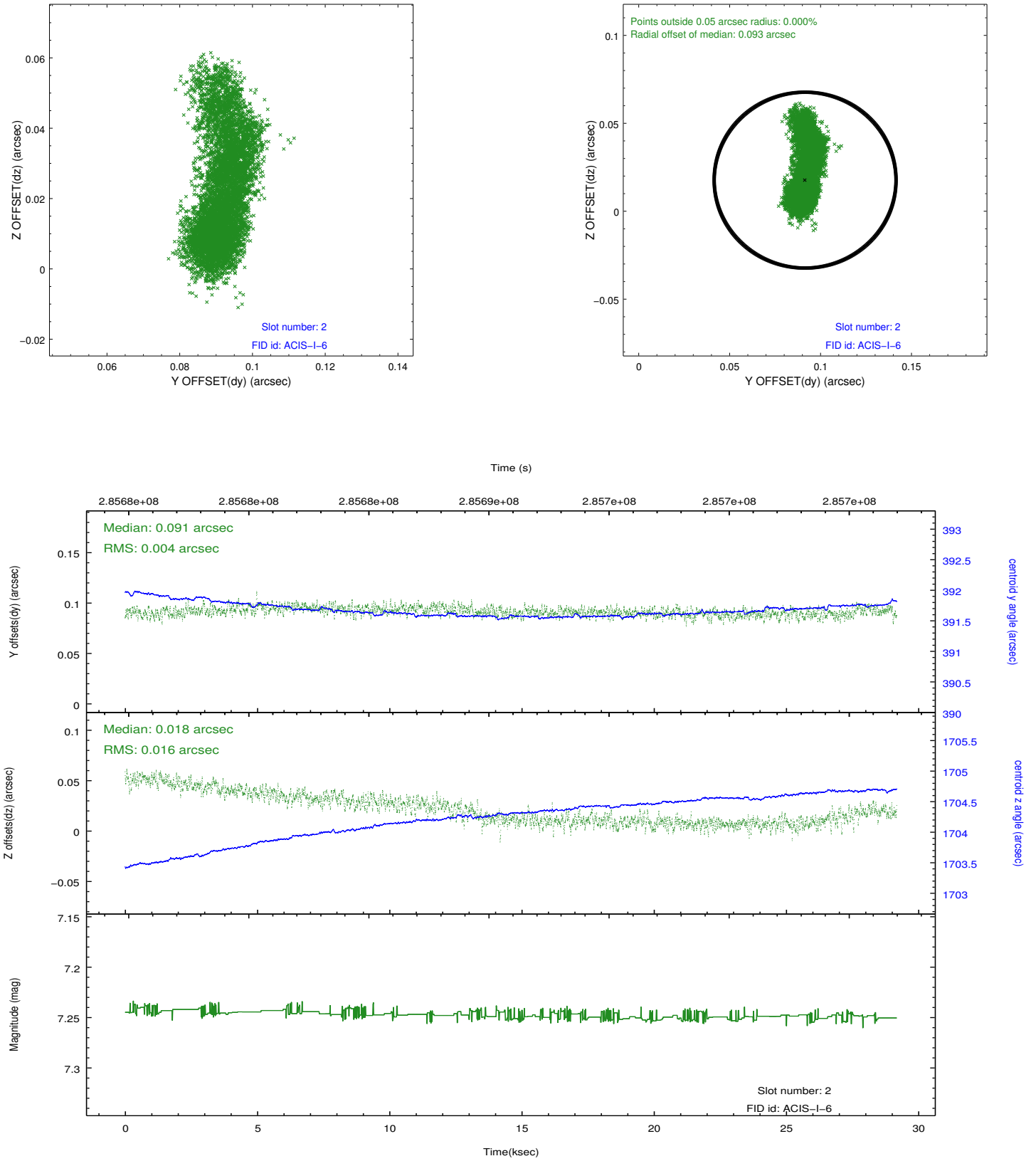
2.5.1 Slot 0



2.5.2 Slot 1



2.5.3 Slot 2



A Summary

A.1 Status

V&V Scientist	Jen Lauer
V&V Date (YYYY-MM-DD)	2012.04.19
V&V Edition	1
V&V Disposition and Status	OK
V&V Charge Time	29.1775998

A.2 Comments