

V&V Reference Report

L2 ASCDS Version : 8.4.4

Observation 7752 - L2 Version 2
Chandra X-Ray Center

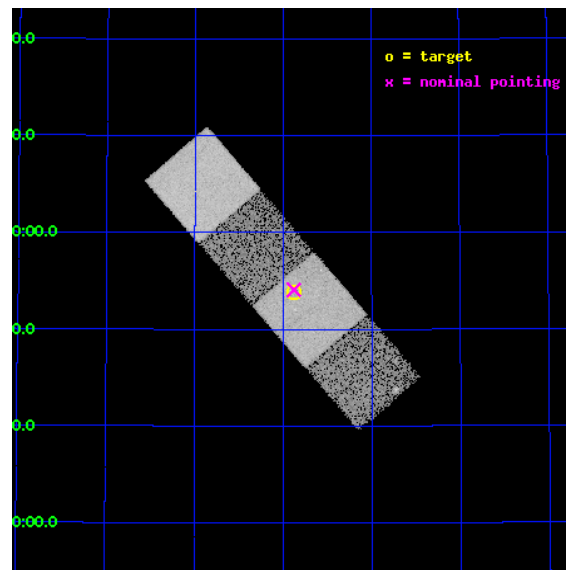
L2 Processing Date : May 1 2012

Contents

1	Front	2
2	OBI	3
2.1	OBI	3
2.1.1	Images	3
2.1.2	Bias	3
2.1.3	Parameters	4
2.1.4	Events	4
2.2	Compared Parameters	5
2.3	Aspect	6
2.4	Star Slots	9
2.4.1	Slot 3	9
2.4.2	Slot 4	10
2.4.3	Slot 5	11
2.4.4	Slot 6	12
2.4.5	Slot 7	13
2.5	FID Slots	14
2.5.1	Slot 0	14
2.5.2	Slot 1	15
2.5.3	Slot 2	16
A	Summary	17
A.1	Status	17
A.2	Comments	17

1 Front

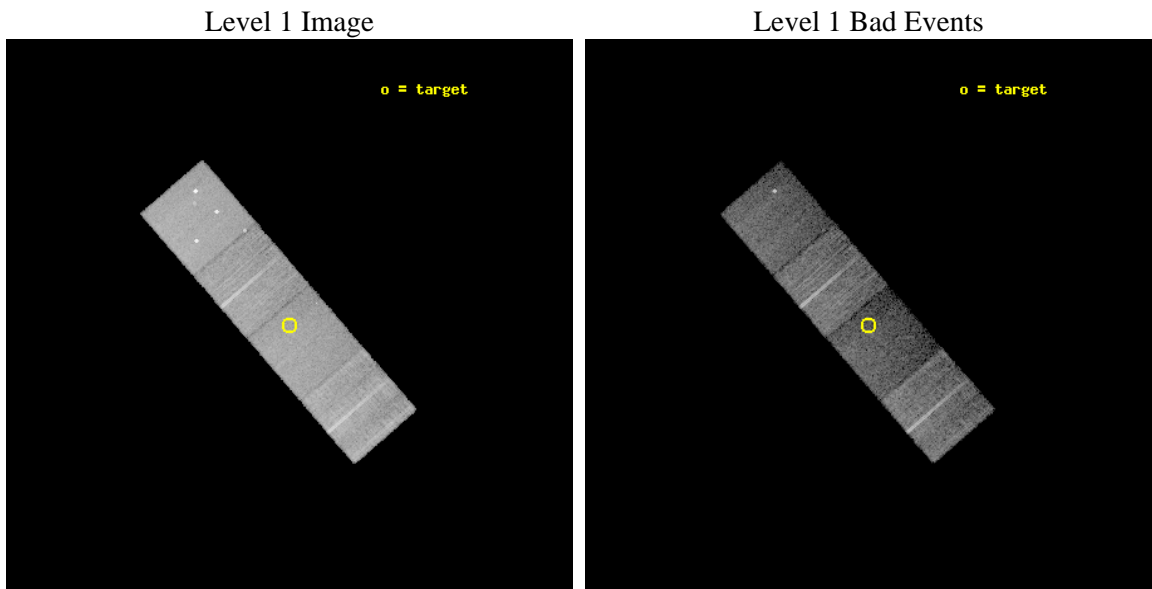
seq_num	701420	Sequence number
obs_id	7752	Observation id
title	Probing heavy obscuration in optically selected Type 2 quasar candidates	Proposal title
observer	Dr Cristian Vignali	Principal investigator
object	SDSS J092152.45+515348.1	Source name
dtcycle	0	
cycle	P	events from which exps? Prim/Second/Both
ra_targ	140.468333	Observer's specified target RA [deg]
dec_targ	51.896694	Observer's specified target Dec [deg]
ra_nom	140.46964725776	Nominal RA [deg]
dec_nom	51.901491171548	Nominal Dec [deg]
roll_nom	49.10099057799	Nominal Roll [deg]
revision	2	Processing version of data
ontime	10177.300078273	Sum of GTIs [s]
livetime	10044.326160331	Livetime [s]
ontime5	10177.300078273	Sum of GTIs [s]
ontime6	10177.300078273	Sum of GTIs [s]
ontime7	10177.300078273	Sum of GTIs [s]
ontime8	10177.300078273	Sum of GTIs [s]
l2events	97609	Number of level 2 events



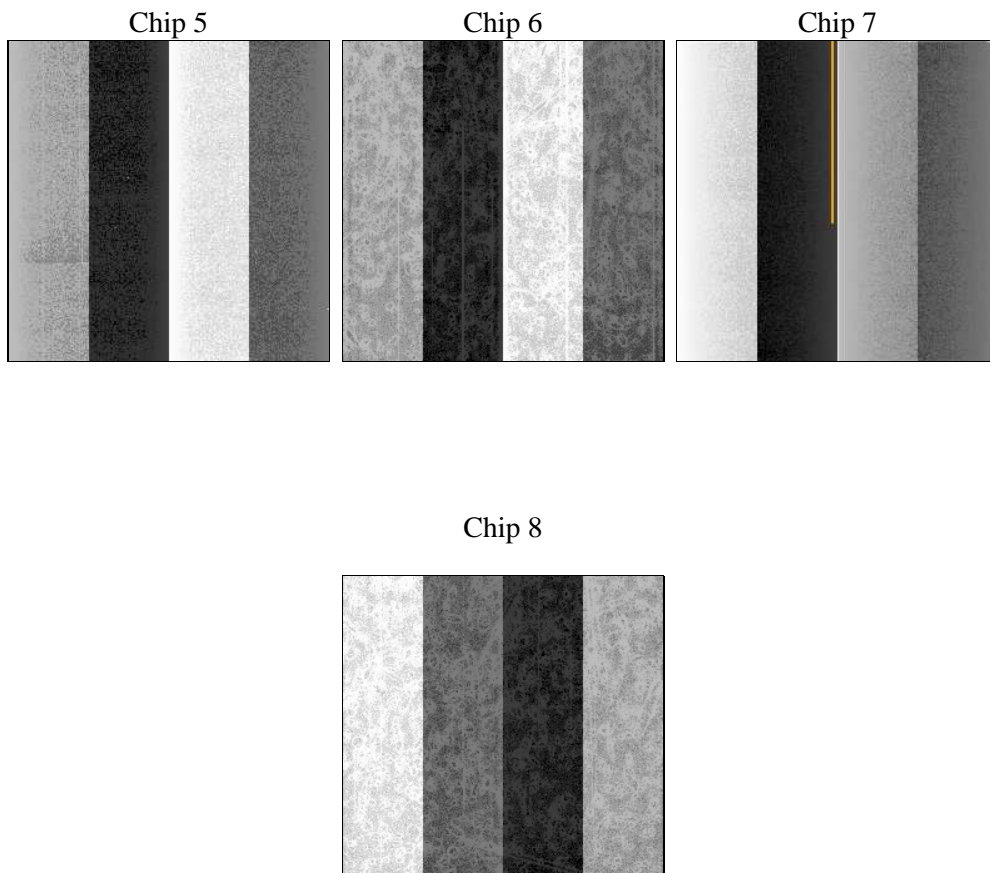
2 OBI

2.1 OBI

2.1.1 Images



2.1.2 Bias



2.1.3 Parameters

obi_num	1	Obi number	sched_exp_time	10000.283000	[s] Scheduled observation exposure time
ascdsver	8.4.4	Processing system revision	ontime	10177.300078273	Sum of GTIs [s]
caldbver	4.4.9	 	ontime5	10177.300078273	Sum of GTIs [s]
date	2012-05-01T21:50:59	Date and time of file creation	ontime6	10177.300078273	Sum of GTIs [s]
revision	2	Processing version of data	ontime7	10177.300078273	Sum of GTIs [s]
			ontime8	10177.300078273	Sum of GTIs [s]
			l1events	354897	Number of level 1 events

2.1.4 Events

	ccd 5	ccd 6	ccd 7	ccd 8
level 1 events	103788	79326	75568	96215
rejected events	48414	71155	38969	72775
rejected %	46%	89%	51%	75%

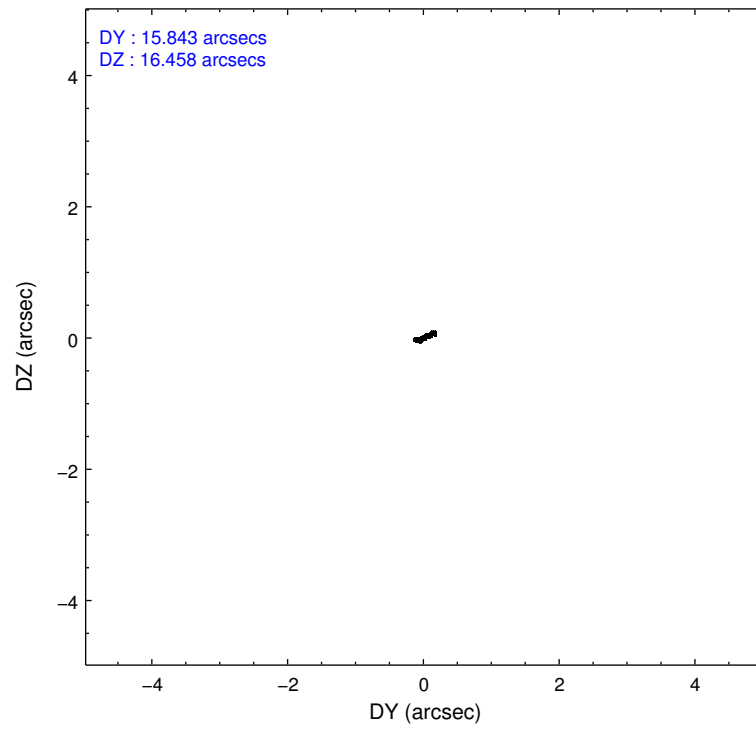
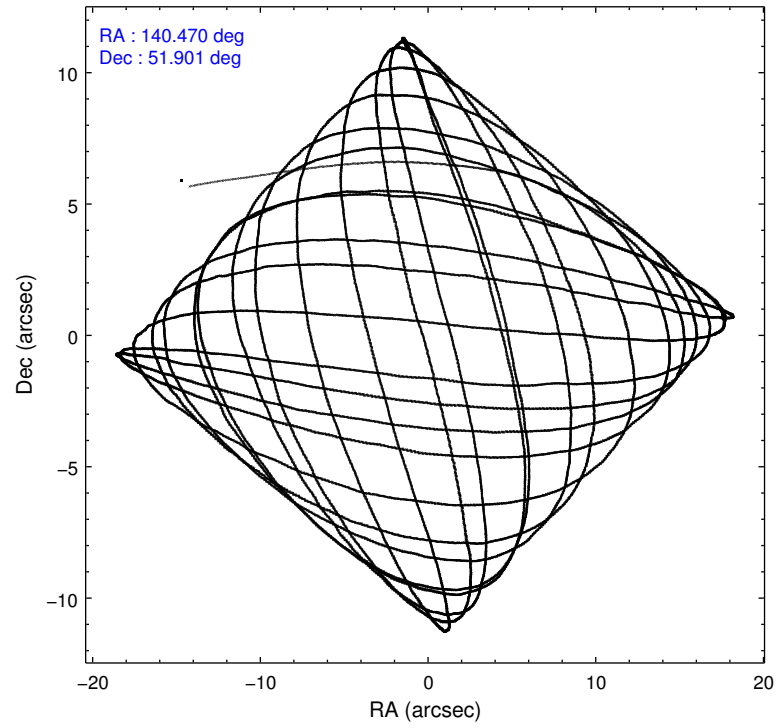
	ccd 5	ccd 6	ccd 7	ccd 8
grade 0 events	9437	3172	3892	7001
	9%	3%	5%	7%
grade 1 events	916	40	109	64
	0%	0%	0%	0%
grade 2 events	16292	1840	7893	5436
	15%	2%	10%	5%
grade 3 events	2329	854	3589	2725
	2%	1%	4%	2%
grade 4 events	2319	831	3463	2554
	2%	1%	4%	2%
grade 5 events	7925	2619	8081	4040
	7%	3%	10%	4%
grade 6 events	26265	1645	18579	6313
	25%	2%	24%	6%
grade 7 events	38305	68325	29962	68082
	36%	86%	39%	70%

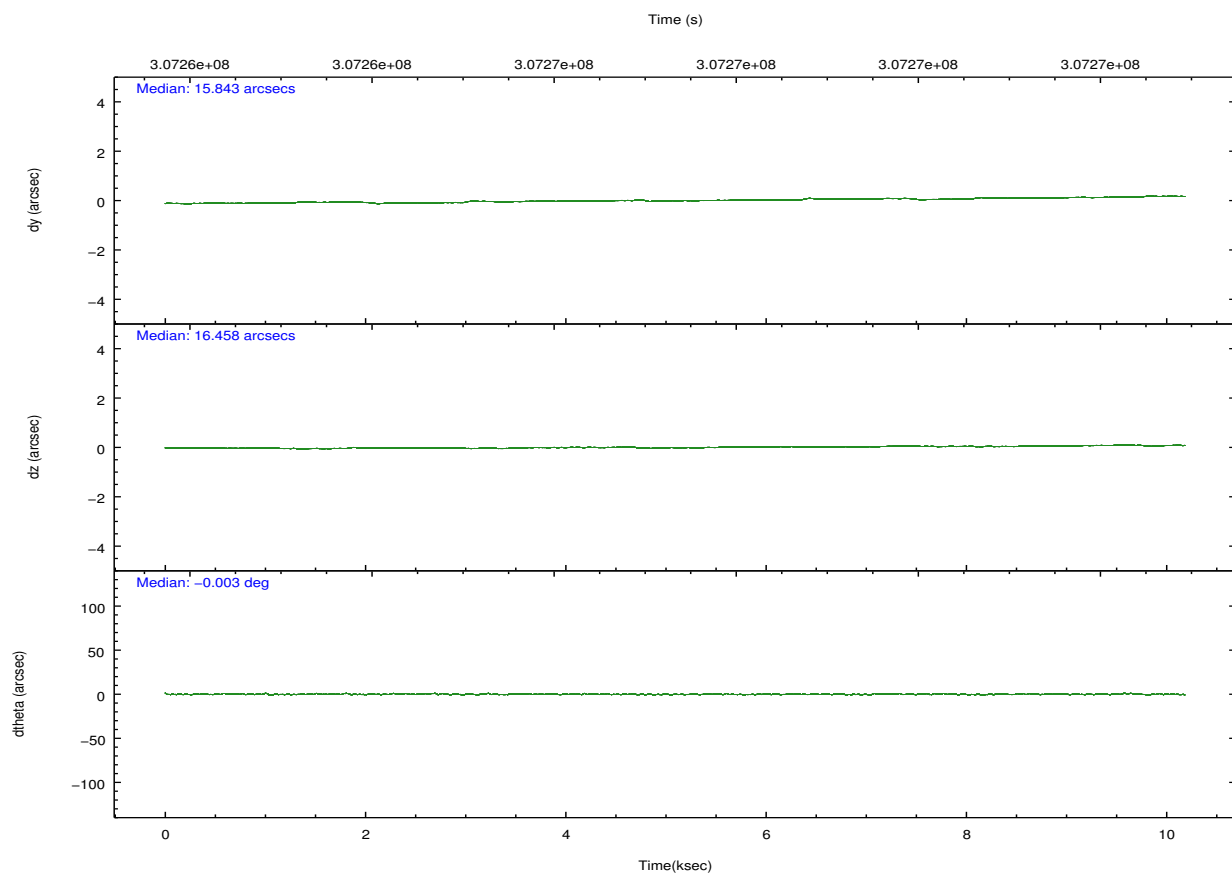
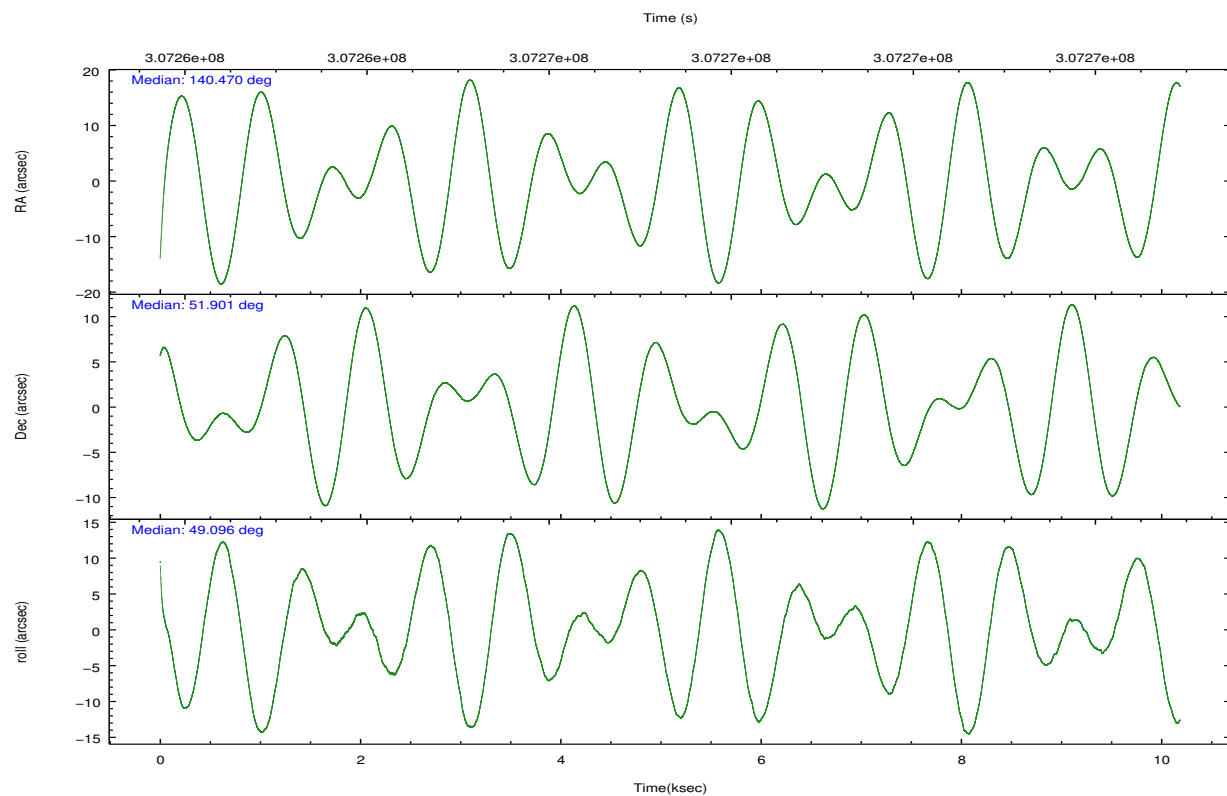
2.2 Compared Parameters

Parameter	Planned	Actual
Instrument	ACIS	ACIS
Detector	ACIS-5678	ACIS-5678
Grating	NONE	NONE
Data mode	VFAINT	VFAINT
Observation mode	POINTING	POINTING
[deg] Pointing RA	140.461801	140.46964725776
[deg] Pointing Dec	51.874563	51.90149117154782
[deg] Pointing Roll	48.950555	49.10099057799022
[mm] SIM focus pos	-0.684267	-0.6828225247311905
[mm] SIM defocus	0	0.001444936568705701
[mm] SIM translation stage pos	-190.132523	-190.1425803651734
[mm] SIM translation stage offset	0	0.01005778216563158
[s] Observation start time (MET)	307262422.184000	307261375.15351
Observation start date	2007-09-27T06:39:17	2007-09-27T06:22:55
[s] Observation end time (MET)	307272422.184000	307272651.69156
Observation end date	2007-09-27T09:25:57	2007-09-27T09:30:51
Read mode	TIMED	TIMED

Parameter	Planned	Actual
Obspar format version number	7	7
Obspar file type	PREDICTED	ACTUAL
Obspar update status	NONE	UPDATED
Number of optional ACIS chips dropped	0	0
On-chip summing requested	N	N
Subarray requested	NONE	NONE
Alternating exposures requested	N	N
[s] Primary exposure time	0.000000	3.1

2.3 Aspect



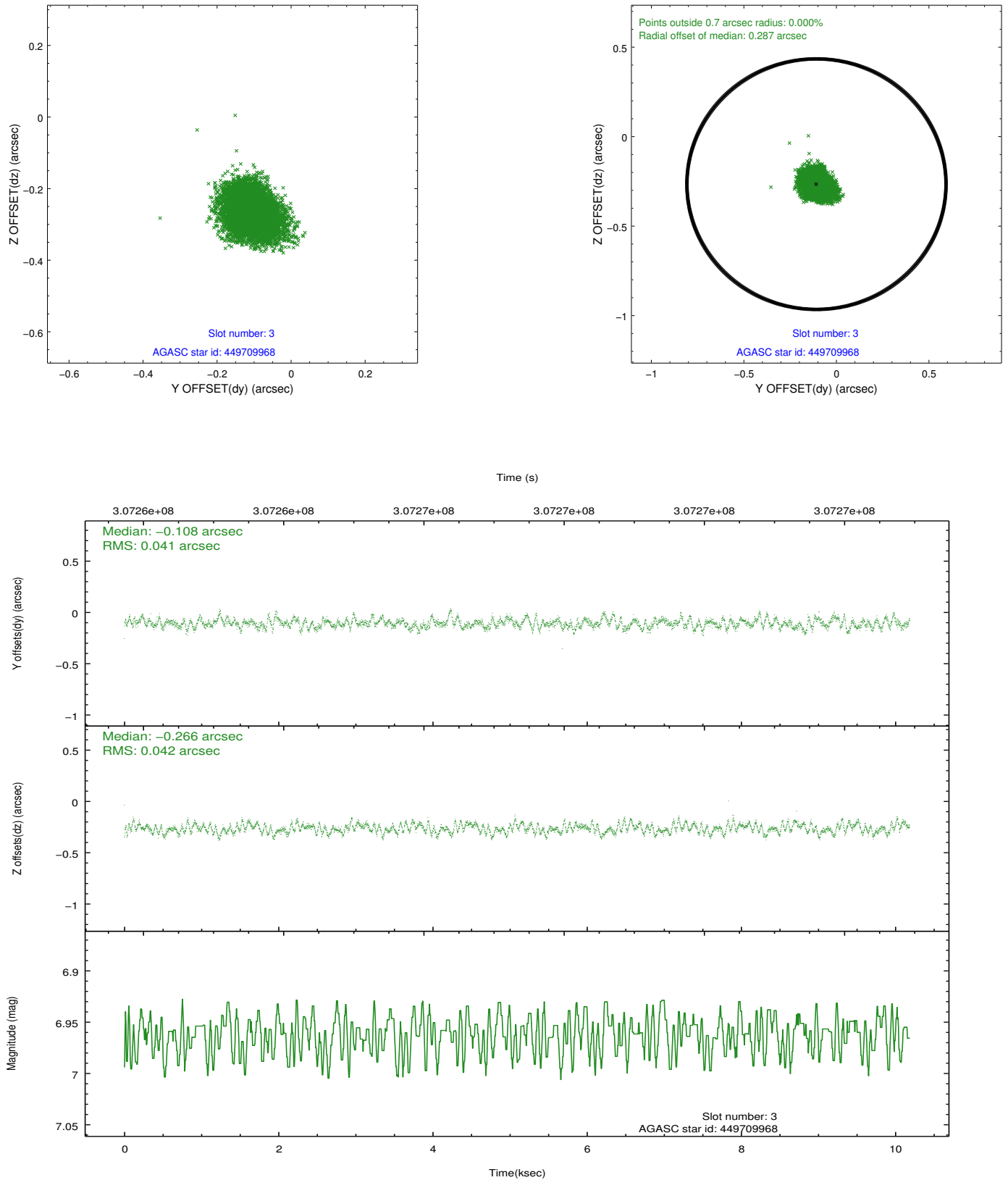


Slot Statistics

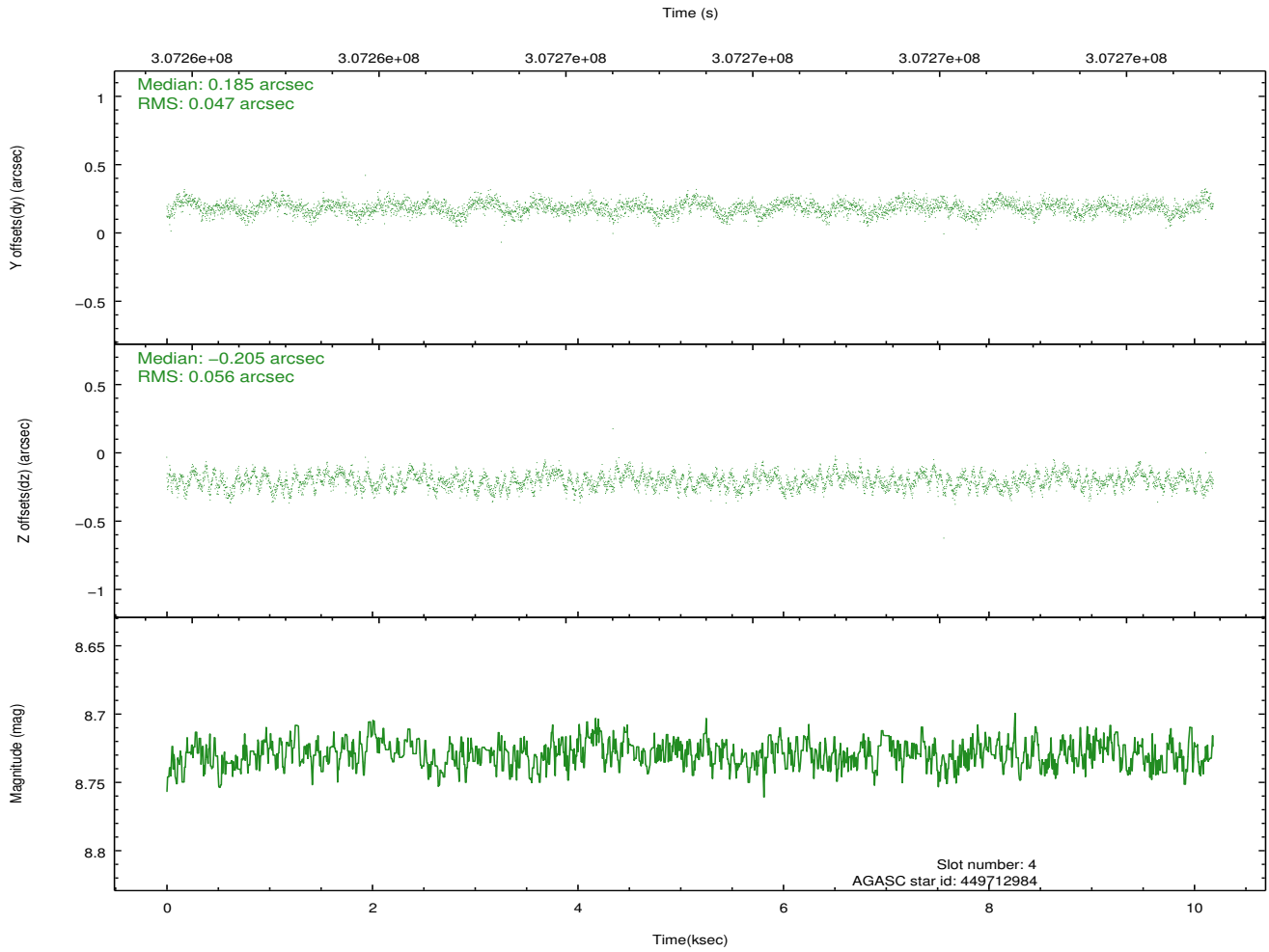
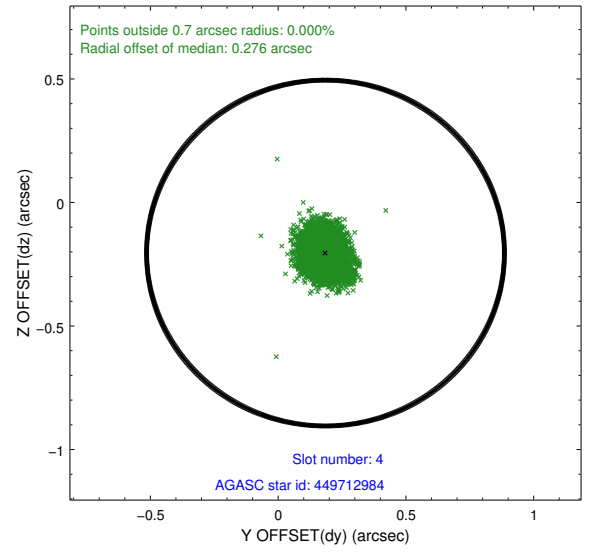
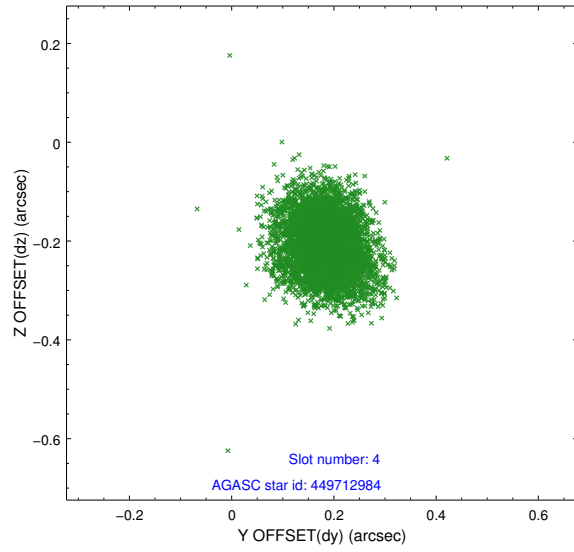
slot	status	id	mag	n_pts	med_dy	med_dz	dr1	dr2	ra	dec	mean_y	mean_z
0	FID	ACIS-S-2	7.09	2484	-0.080	-0.027	0.007	0.011	0.000000	0.000000	-768.95	-1737.85
1	FID	ACIS-S-4	7.19	2483	0.158	0.046	0.005	0.009	0.000000	0.000000	2144.36	170.13
2	FID	ACIS-S-5	7.22	2484	-0.109	-0.010	0.006	0.011	0.000000	0.000000	-1821.13	164.39
3	GUIDE	449709968	6.96	4969	-0.108	-0.266	0.063	0.100	140.122718	52.450980	1077.65	1924.90
4	GUIDE	449712984	8.73	4961	0.185	-0.205	0.078	0.125	139.803051	51.633381	-1615.85	544.43
5	GUIDE	449717184	9.12	4964	-0.064	0.165	0.101	0.163	141.507530	52.161294	2307.31	-1052.27
6	GUIDE	449718536	9.26	4962	-0.004	0.060	0.090	0.142	141.178812	52.024267	1456.14	-838.64
7	GUIDE	449709784	8.20	4967	-0.007	0.246	0.076	0.120	140.618555	51.014409	-2101.26	-2301.09

2.4 Star Slots

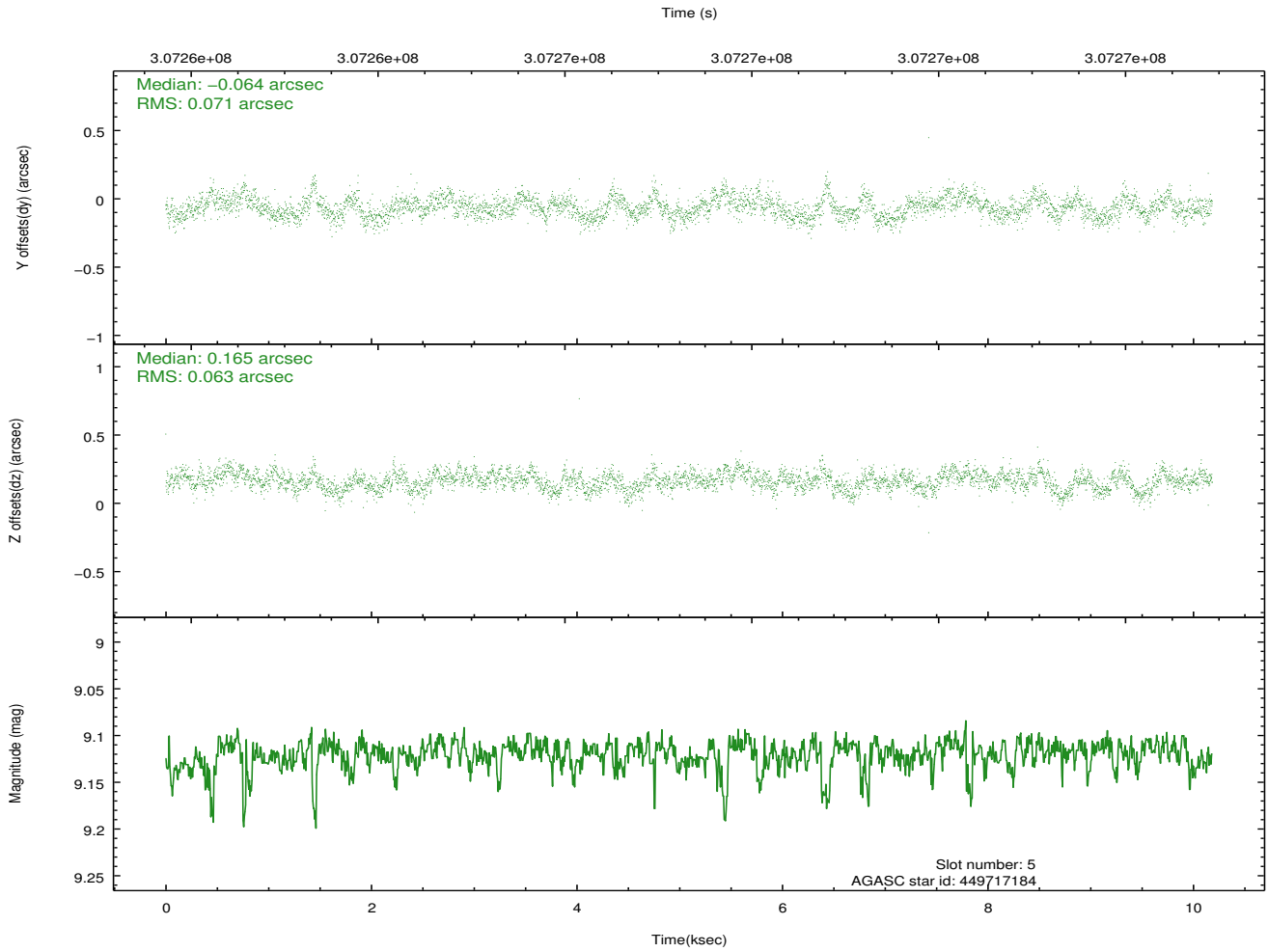
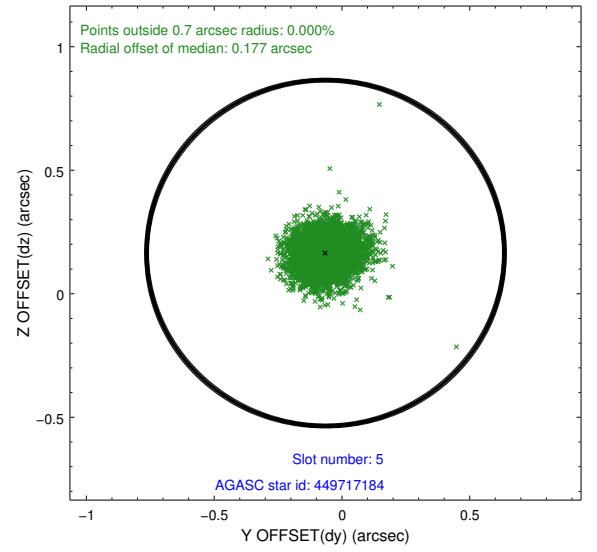
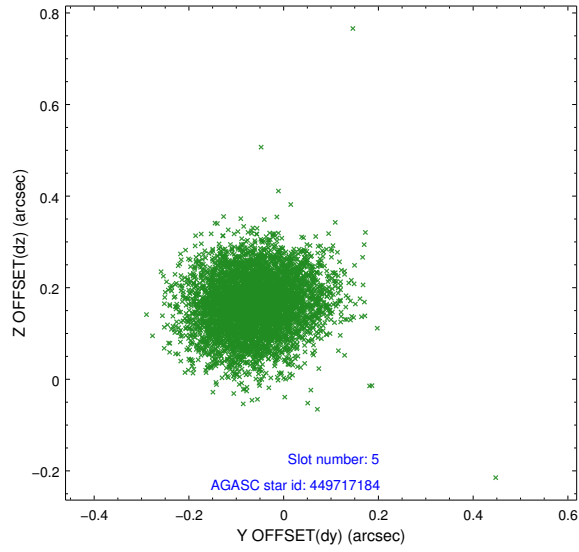
2.4.1 Slot 3



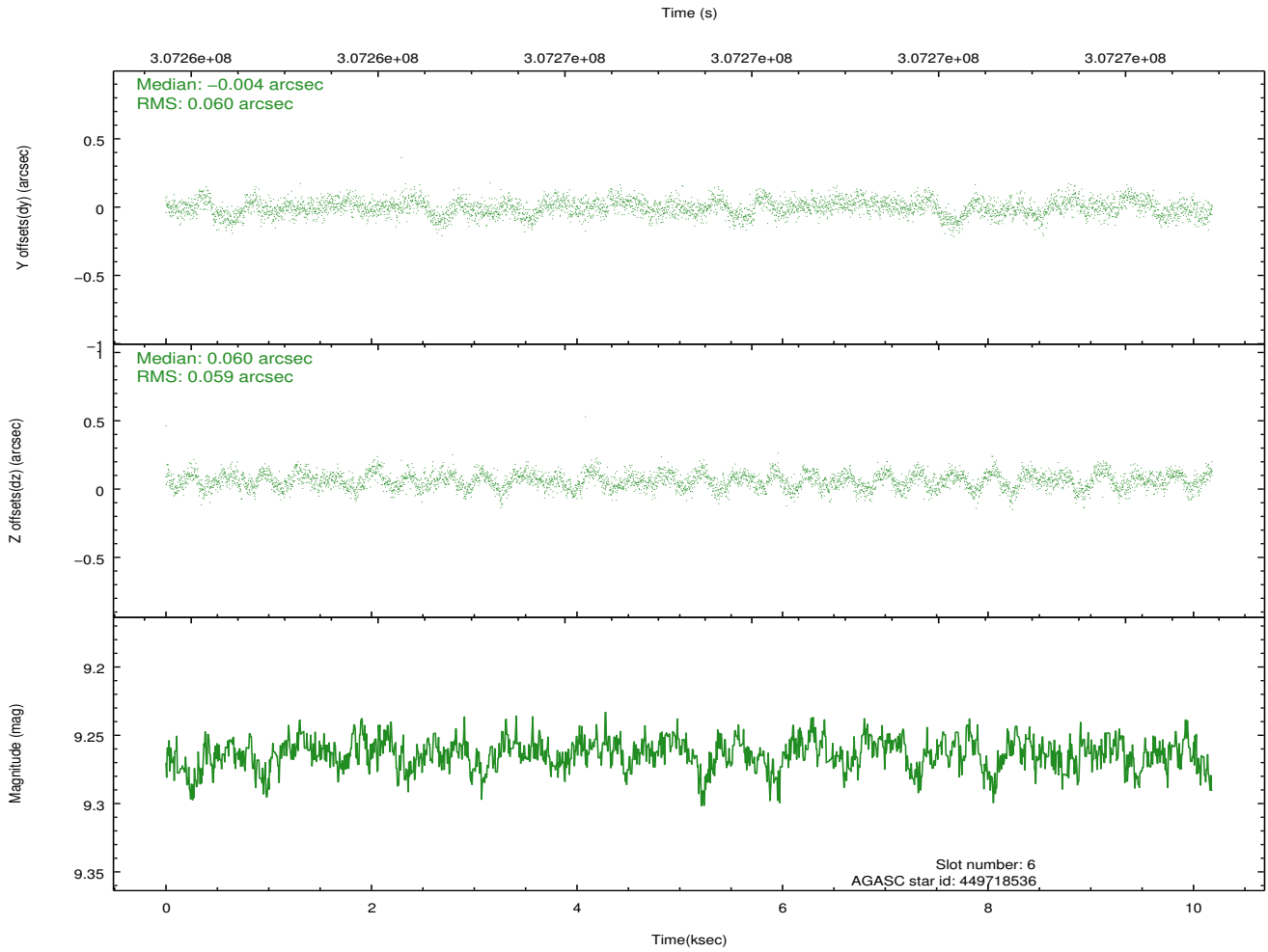
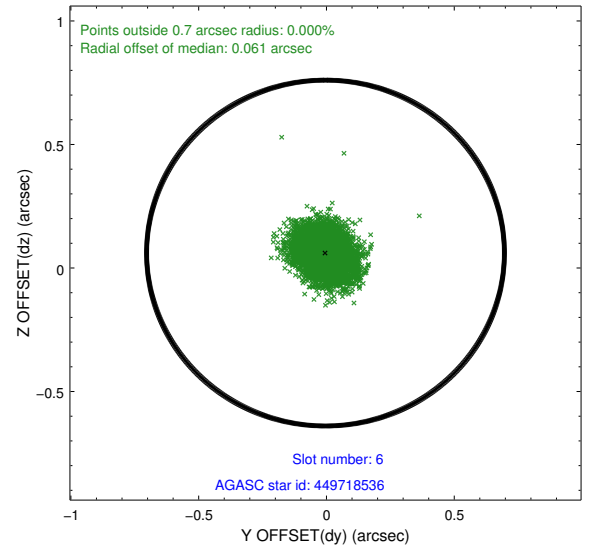
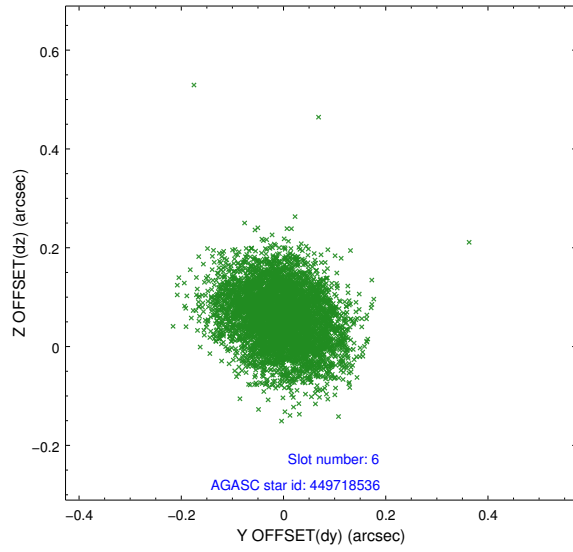
2.4.2 Slot 4



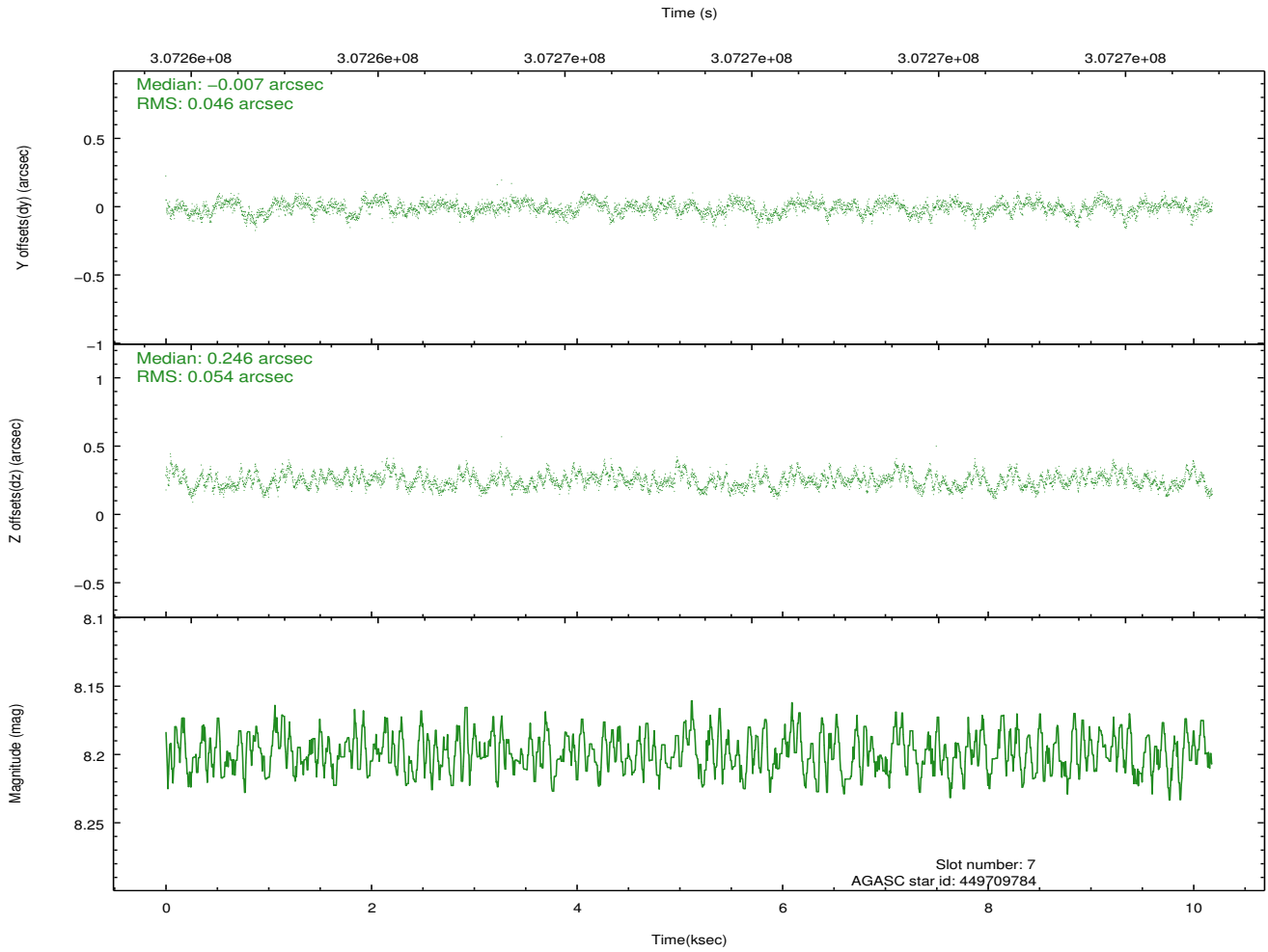
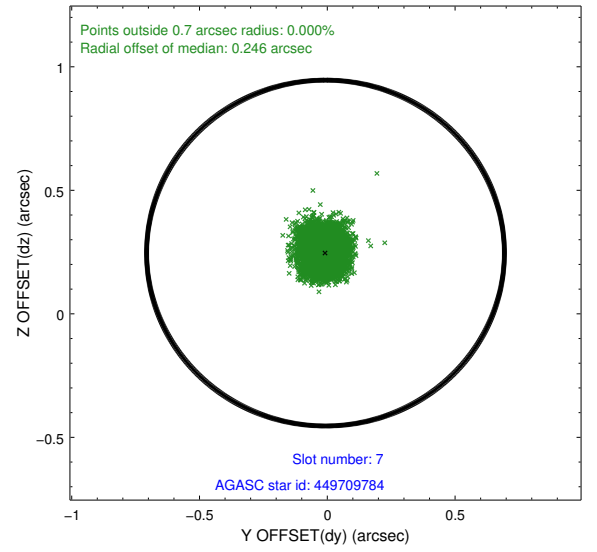
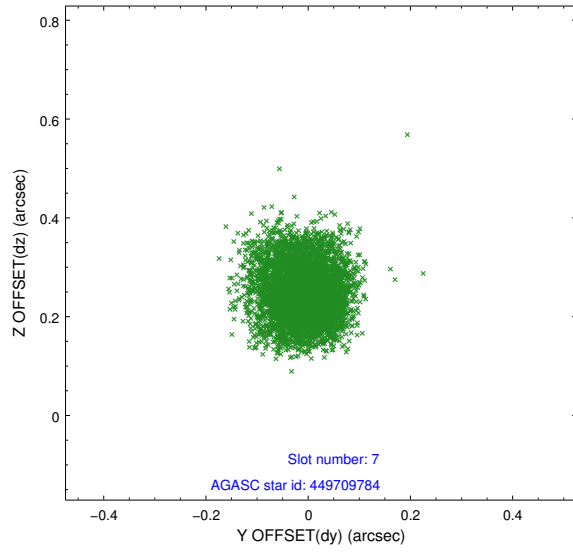
2.4.3 Slot 5



2.4.4 Slot 6

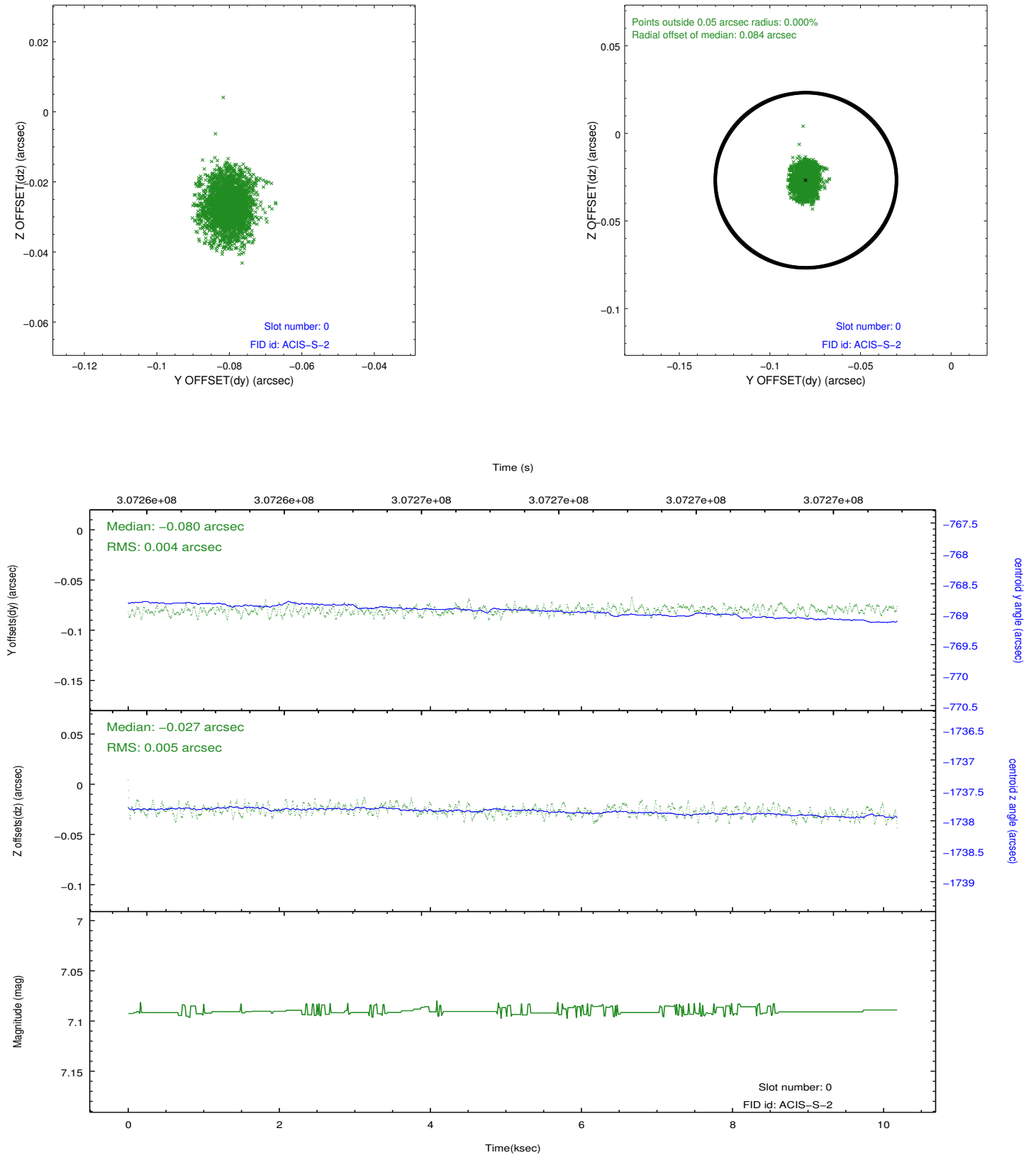


2.4.5 Slot 7

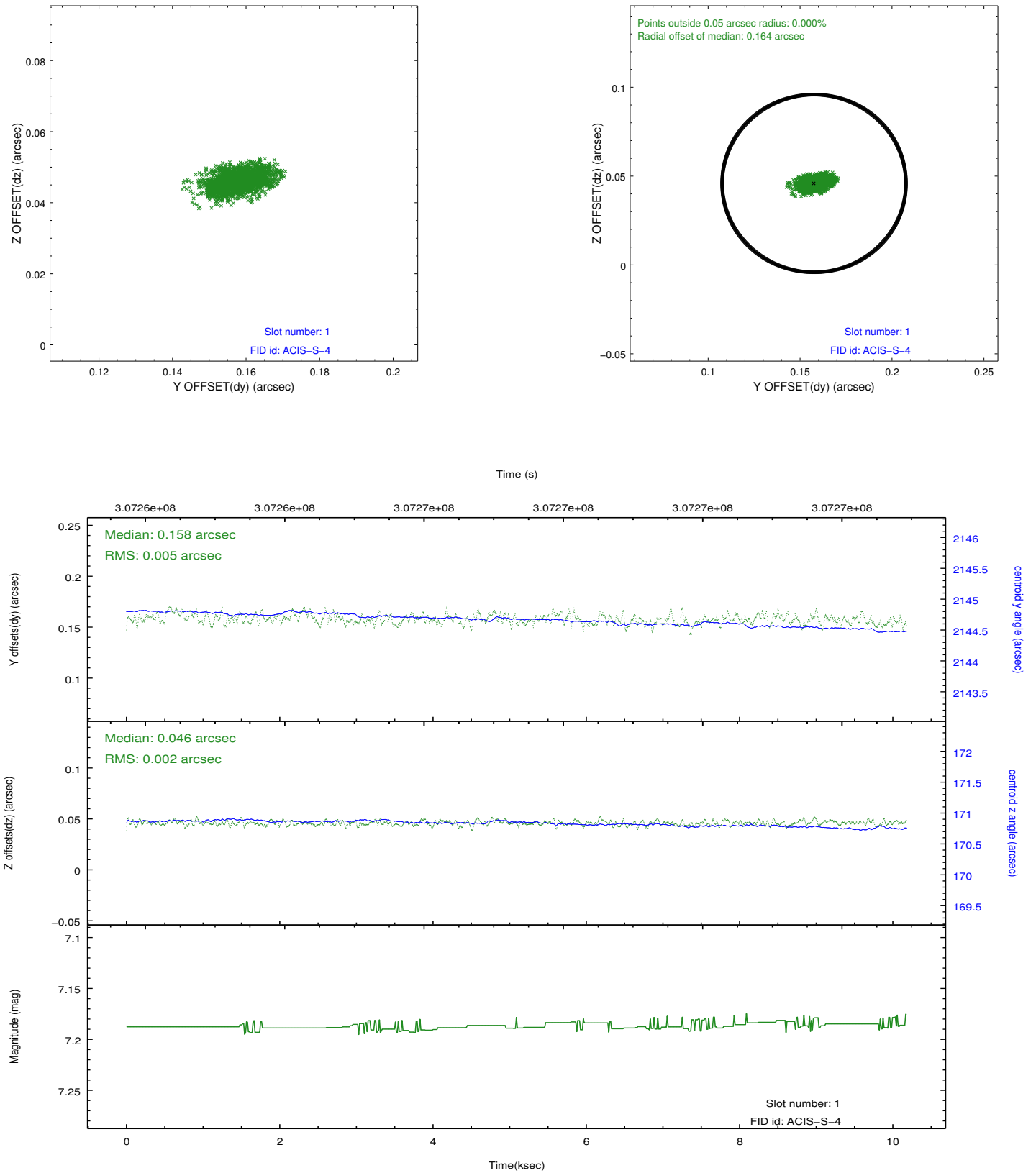


2.5 FID Slots

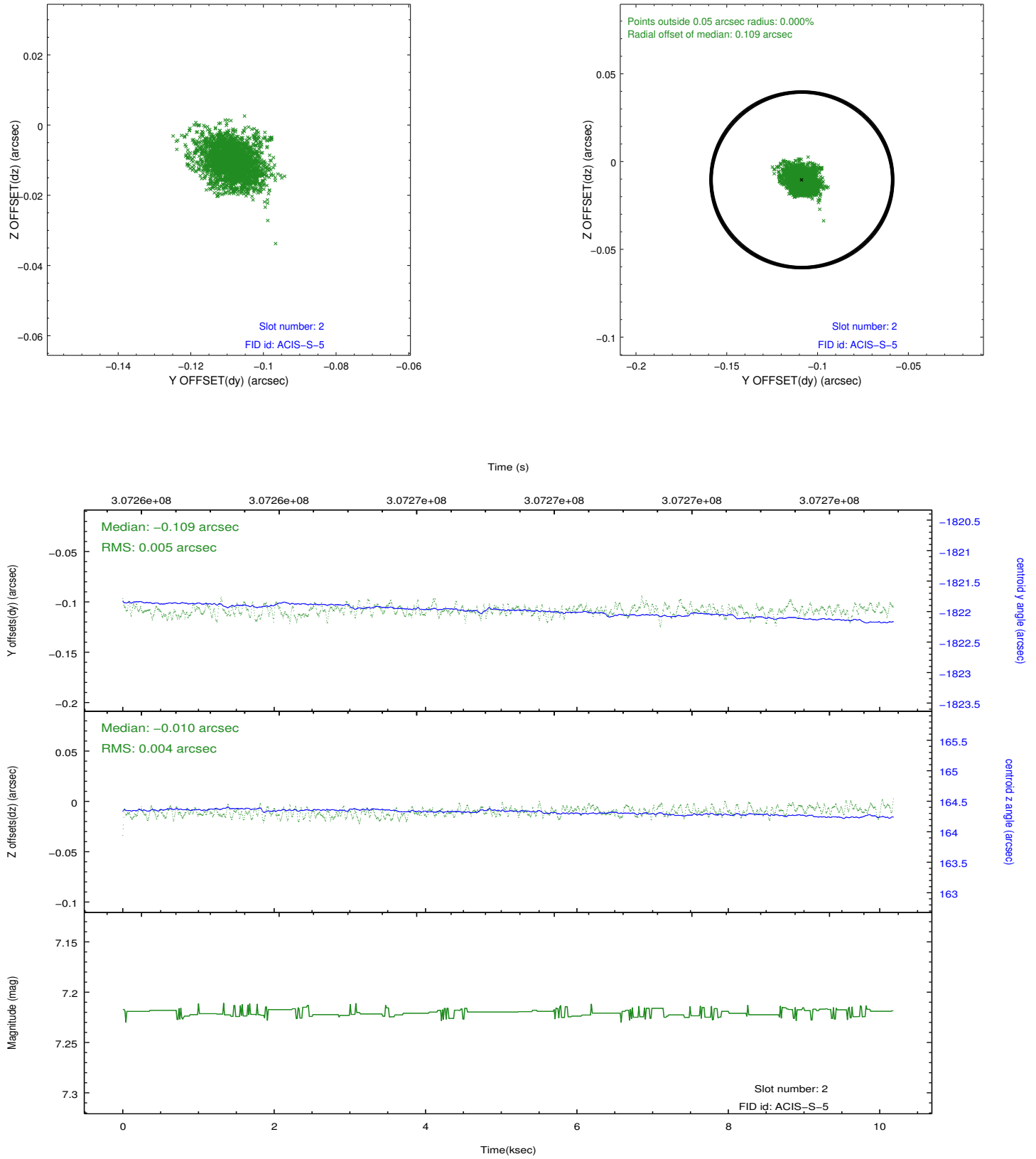
2.5.1 Slot 0



2.5.2 Slot 1



2.5.3 Slot 2



A Summary

A.1 Status

V&V Scientist	Jen Lauer
V&V Date (YYYY-MM-DD)	2012.05.03
V&V Edition	1
V&V Disposition and Status	OK
V&V Charge Time	10.1773

A.2 Comments