

V&V Reference Report

L2 ASCDS Version : 8.4.3

Observation 7262 - L2 Version 2
Chandra X-Ray Center

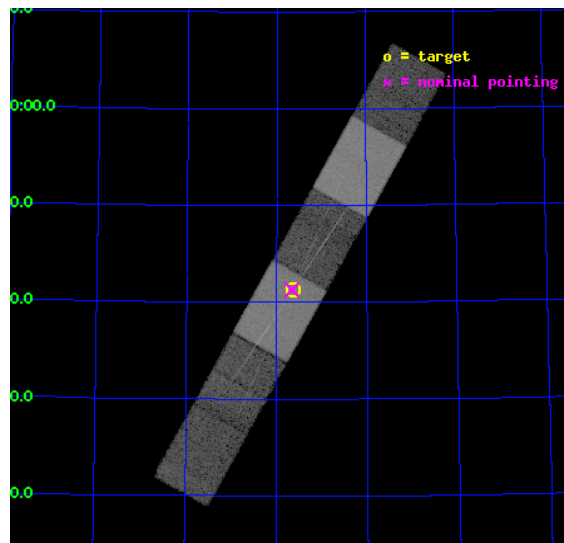
L2 Processing Date : Mar 24 2012

Contents

1	Front	2
2	OBI	3
2.1	OBI	3
2.1.1	Images	3
2.1.2	Bias	3
2.1.3	Parameters	4
2.1.4	Events	4
2.2	Compared Parameters	5
2.3	Aspect	6
2.4	Star Slots	9
2.4.1	Slot 3	9
2.4.2	Slot 4	10
2.4.3	Slot 5	11
2.4.4	Slot 6	12
2.4.5	Slot 7	13
2.5	FID Slots	14
2.5.1	Slot 0	14
2.5.2	Slot 1	15
2.5.3	Slot 2	16
3	Gratings	17
3.1	HEG Arm	17
3.2	MEG Arm	19
A	Summary	21
A.1	Status	21
A.2	Comments	21

1 Front

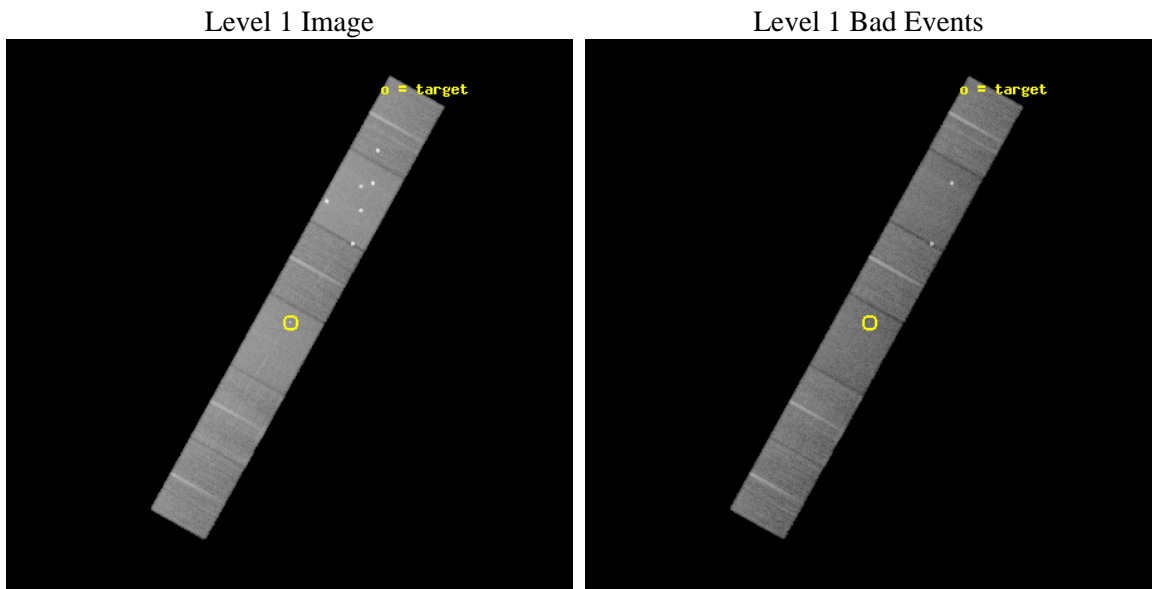
seq_num	300149	Sequence number
obs_id	7262	Observation id
title	Plasma and Kinematic Diagnoses of the Post-Shock Cooling Plasma in the Intermediate Polar YY Draconis	Proposal title
observer	Dr Koji Mukai	Principal investigator
object	YY Draconis	Source name
dtcycle	0	
cycle	P	events from which exps? Prim/Second/Both
ra_targ	175.909583	Observer's specified target RA [deg]
dec_targ	71.689	Observer's specified target Dec [deg]
ra_nom	175.91656645039	Nominal RA [deg]
dec_nom	71.688511694217	Nominal Dec [deg]
roll_nom	119.14999909371	Nominal Roll [deg]
revision	2	Processing version of data
ontime	23042.5	Sum of GTIs [s]
livetime	22670.343638825	Livetime [s]
ontime4	23042.5	Sum of GTIs [s]
ontime5	23042.5	Sum of GTIs [s]
ontime6	23042.5	Sum of GTIs [s]
ontime7	23042.5	Sum of GTIs [s]
ontime8	23042.5	Sum of GTIs [s]
ontime9	23042.5	Sum of GTIs [s]
l2events	240909	Number of level 2 events



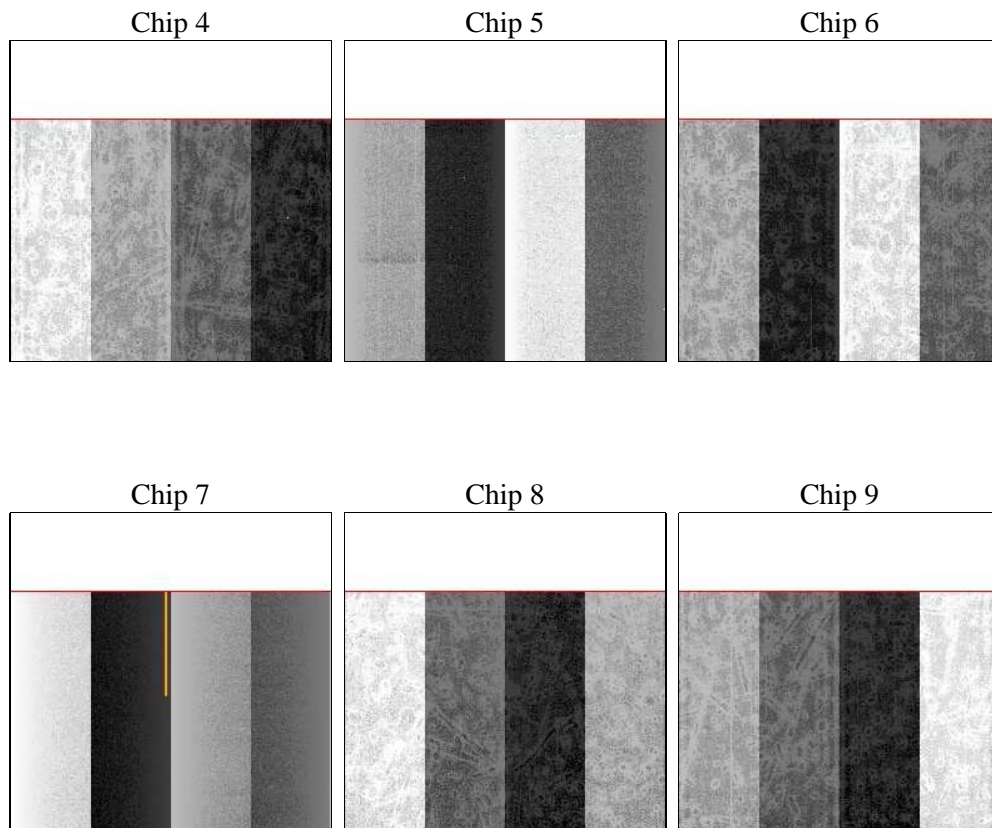
2 OBI

2.1 OBI

2.1.1 Images



2.1.2 Bias



2.1.3 Parameters

obi_num	0	Obi number	sched_exp_time	23000.000000	[s] Scheduled observation exposure time
ascdsver	8.4.3	Processing system revision	ontime	23042.5	Sum of GTIs [s]
caldsver	4.4.8	 	ontime4	23042.5	Sum of GTIs [s]
date	2012-03-24T06:21:01	Date and time of file creation	ontime5	23042.5	Sum of GTIs [s]
revision	2	Processing version of data	ontime6	23042.5	Sum of GTIs [s]
			ontime7	23042.5	Sum of GTIs [s]
			ontime8	23042.5	Sum of GTIs [s]
			ontime9	23042.5	Sum of GTIs [s]
			l1events	1105663	Number of level 1 events

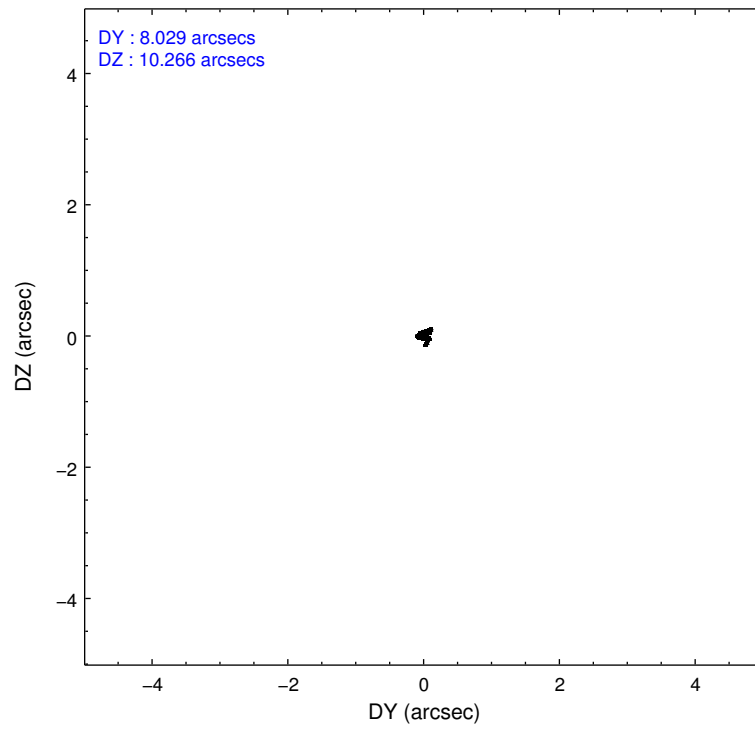
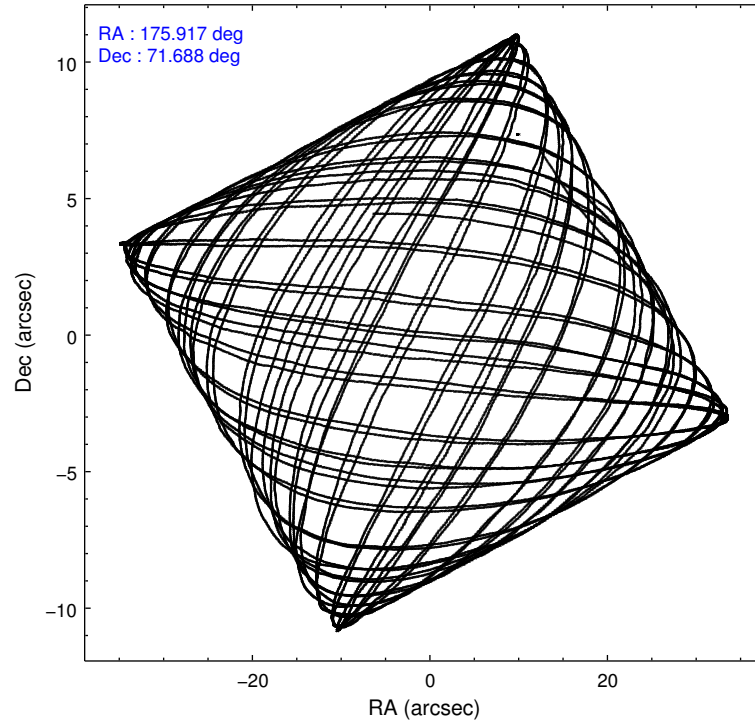
2.1.4 Events

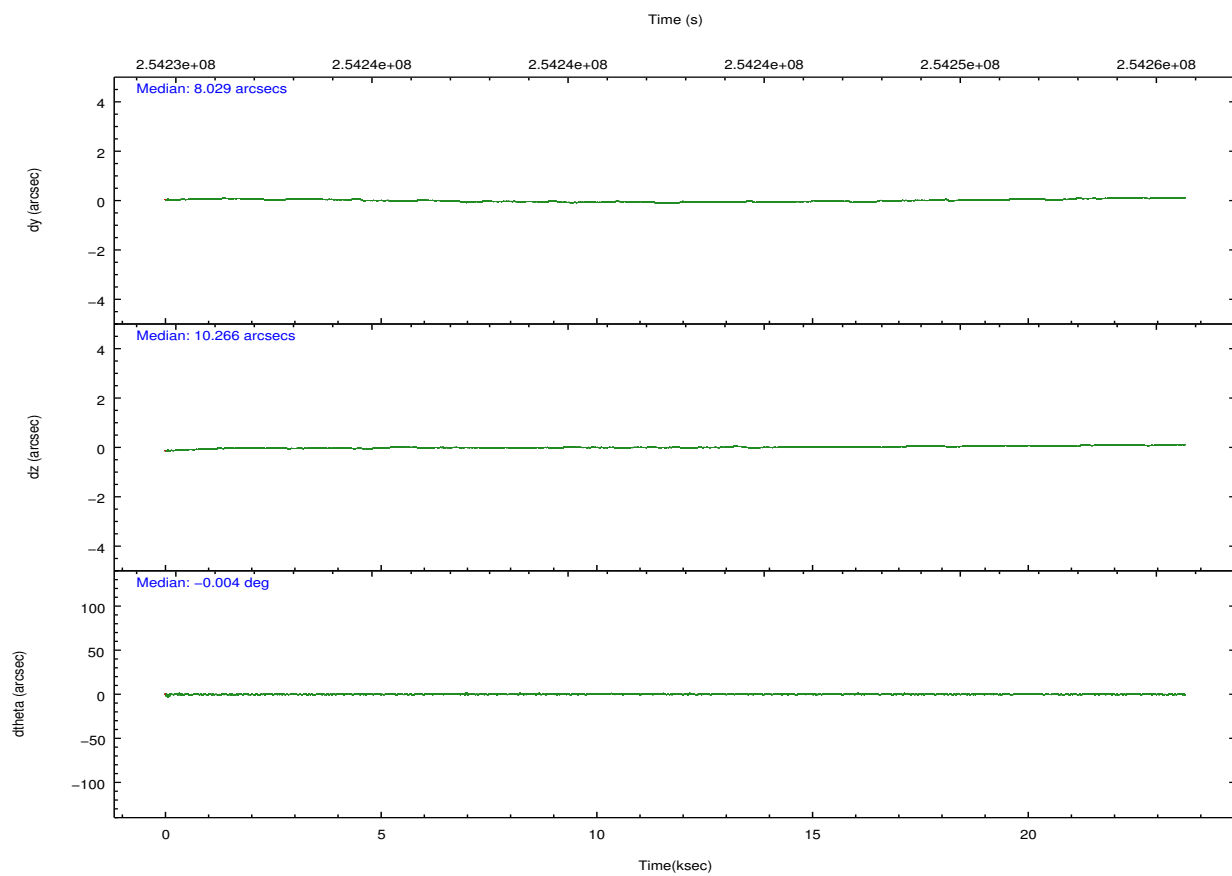
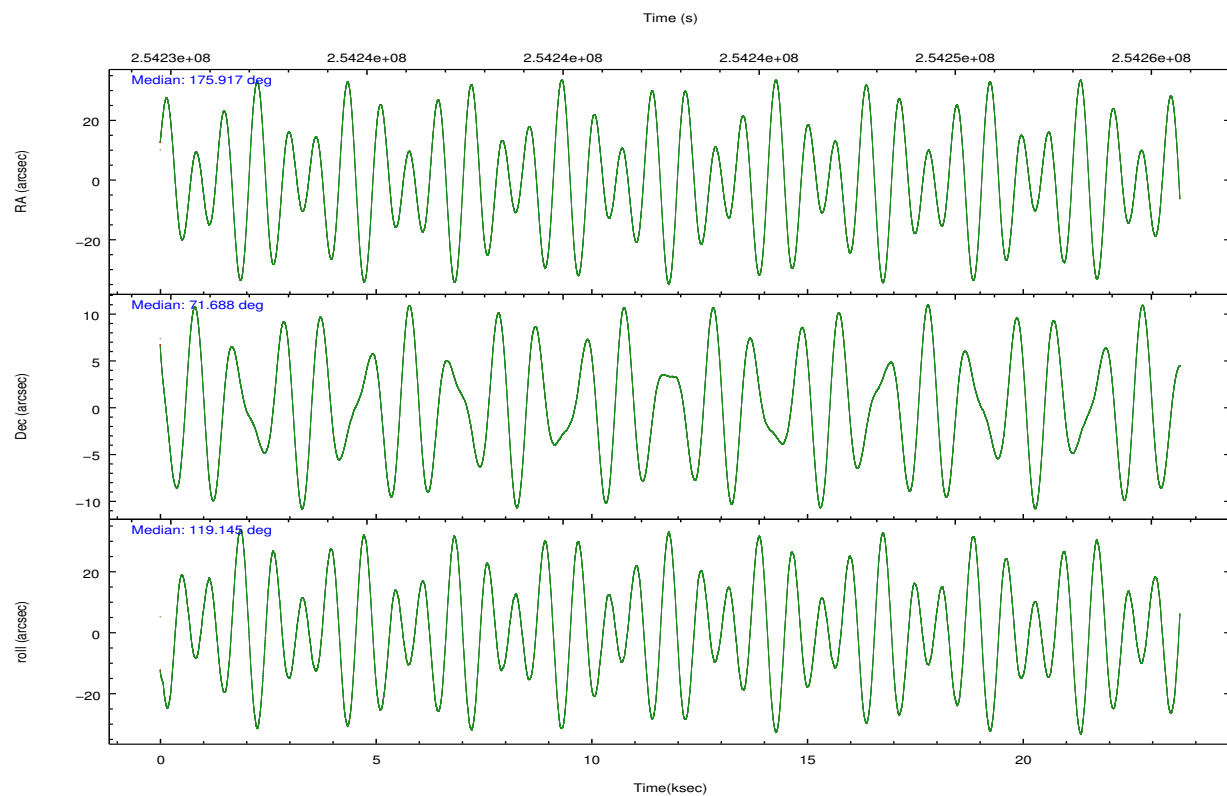
	ccd 4	ccd 5	ccd 6	ccd 7	ccd 8	ccd 9		ccd 4	ccd 5	ccd 6	ccd 7	ccd 8	ccd 9
level 1 events	170004	249863	150409	199337	186460	149590	grade 0 events	15491	31651	7745	7800	12783	7372
rejected events	143865	124460	131217	114126	145969	131414		9%	12%	5%	3%	6%	4%
rejected %	84%	49%	87%	57%	78%	87%	grade 1 events	141	5609	71	215	114	70
								0%	2%	0%	0%	0%	0%
							grade 2 events	3925	32033	3974	17356	8757	3712
								2%	12%	2%	8%	4%	2%
							grade 3 events	1936	4870	1928	7643	4264	1938
								1%	1%	1%	3%	2%	1%
							grade 4 events	1859	4087	1904	7592	3997	1768
								1%	1%	1%	3%	2%	1%
							grade 5 events	6396	16534	6611	18555	8574	6909
								3%	6%	4%	9%	4%	4%
							grade 6 events	2932	52791	3648	44838	10699	3392
								1%	21%	2%	22%	5%	2%
							grade 7 events	137324	102288	124528	95338	137272	124429
								80%	40%	82%	47%	73%	83%

2.2 Compared Parameters

Parameter	Planned	Actual	Parameter	Planned	Actual
Instrument	ACIS	ACIS	Obspar format version number	7	7
Detector	ACIS-456789	ACIS-456789	Obspar file type	PREDICTED	ACTUAL
Grating	HETG	HETG	Obspar update status	NONE	UPDATED
Data mode	FAINT	FAINT	Number of optional ACIS chips dropped	0	0
Observation mode	POINTING	POINTING	On-chip summing requested	N	N
[deg] Pointing RA	175.991464	175.9165664503861	Subarray requested	CUSTOM	CUSTOM
[deg] Pointing Dec	71.674866	71.68851169421748	Subarray start row	1	1
[deg] Pointing Roll	118.922276	119.1499990937112	Subarray row count	774	774
[mm] SIM focus pos	-0.684267	-0.6828225247311905	Alternating exposures requested	N	N
[mm] SIM defocus	0	0.001444936568705701	[s] Primary exposure time	0.000000	2.5
[mm] SIM translation stage pos	-187.132523	-187.1254020033014			
[mm] SIM translation stage offset	-3	-3.007120579706367			
[s] Observation start time (MET)	254231544.184000	254230355.19795			
Observation start date	2006-01-21T11:51:19	2006-01-21T11:32:35			
[s] Observation end time (MET)	254254544.184000	254255110.9991			
Observation end date	2006-01-21T18:14:39	2006-01-21T18:25:10			
Read mode	TIMED	TIMED			

2.3 Aspect



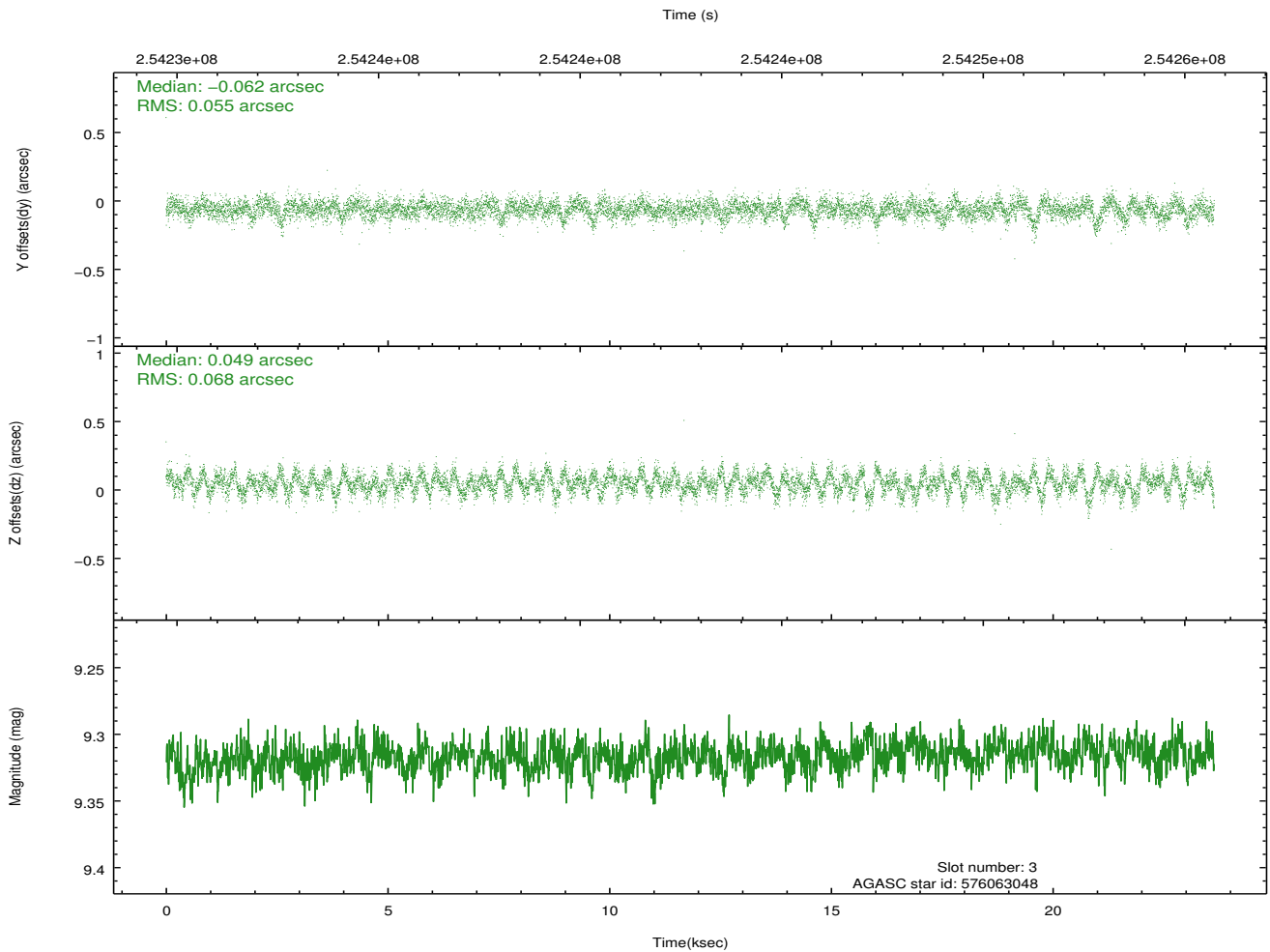
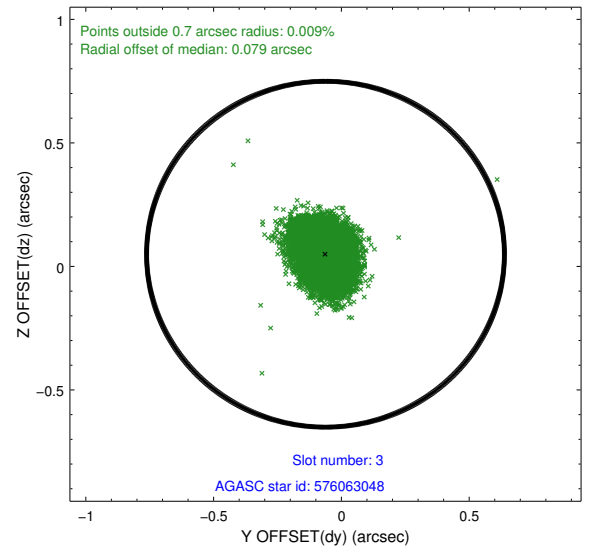
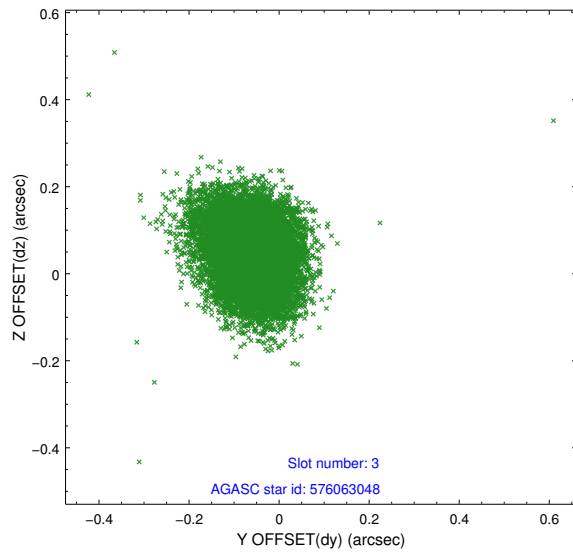


Slot Statistics

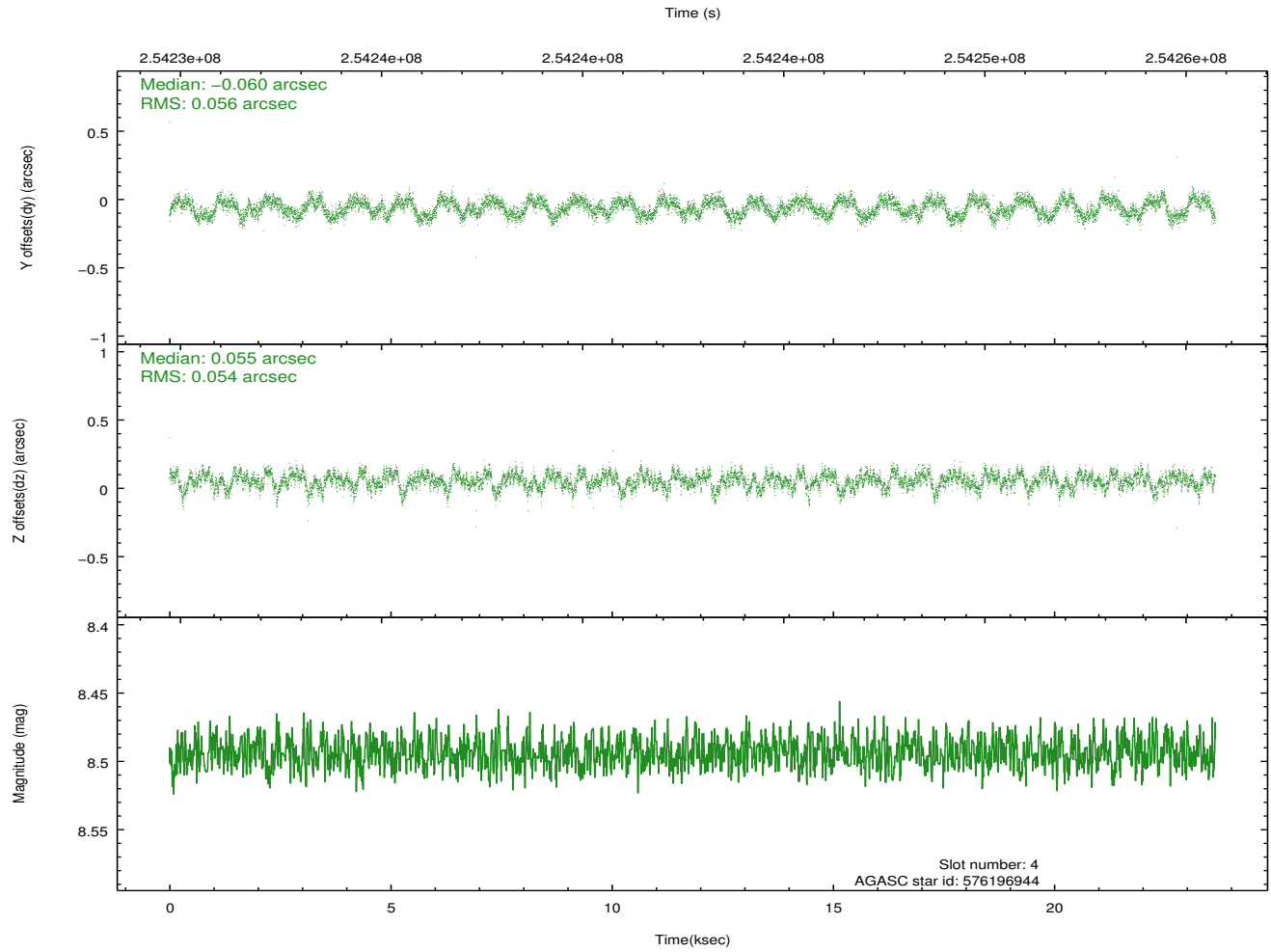
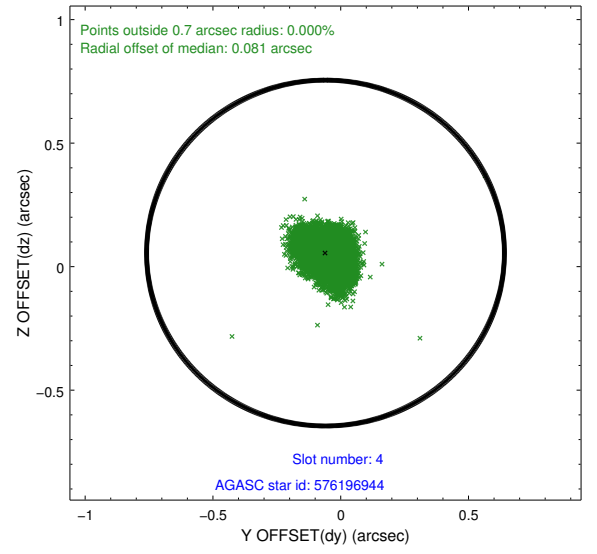
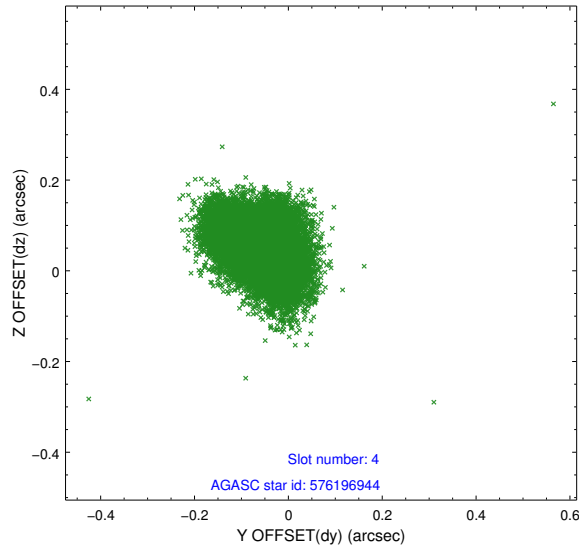
slot	status	id	mag	n_pts	med_dy	med_dz	dr1	dr2	ra	dec	mean_y	mean_z
0	FID	ACIS-S-1	7.19	5766	0.065	-0.001	0.007	0.012	0.000000	0.000000	935.45	-1789.26
1	FID	ACIS-S-4	7.20	5766	0.081	-0.026	0.007	0.012	0.000000	0.000000	2152.99	114.69
2	FID	ACIS-S-5	7.23	5766	-0.173	0.039	0.007	0.013	0.000000	0.000000	-1813.45	108.58
3	GUIDE	576063048	9.32	11522	-0.062	0.049	0.092	0.151	175.839657	72.109524	1451.31	-609.50
4	GUIDE	576196944	8.49	11528	-0.060	0.055	0.084	0.130	176.483968	72.095688	1065.13	-1210.77
5	GUIDE	576197680	8.99	11523	-0.052	0.069	0.109	0.180	177.799182	71.774257	-643.70	-1968.69
6	GUIDE	576064704	9.53	11524	-0.013	0.059	0.164	0.255	173.877683	72.064026	2395.51	1353.67
7	GUIDE	576070904	10.31	11512	0.185	-0.211	0.186	0.304	175.036924	70.880403	-1950.77	2364.22

2.4 Star Slots

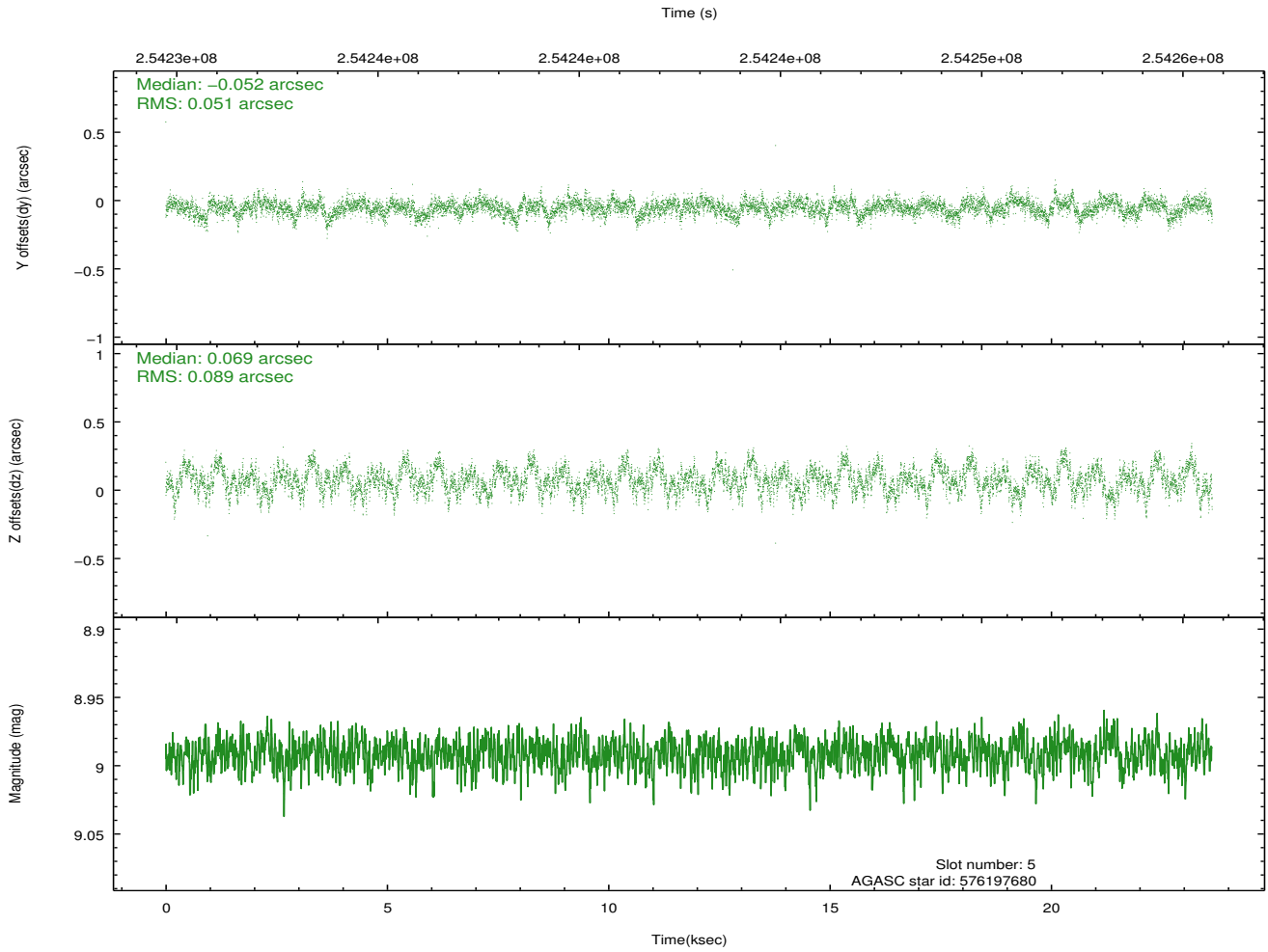
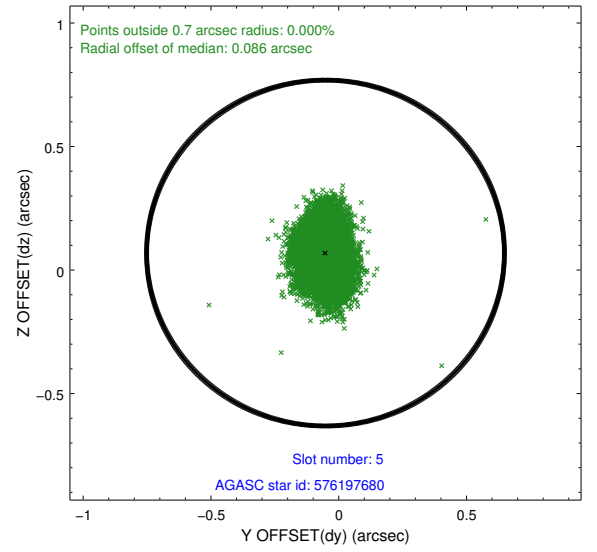
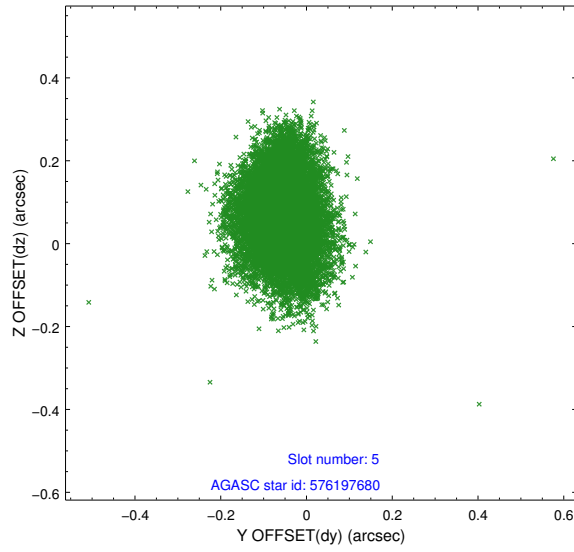
2.4.1 Slot 3



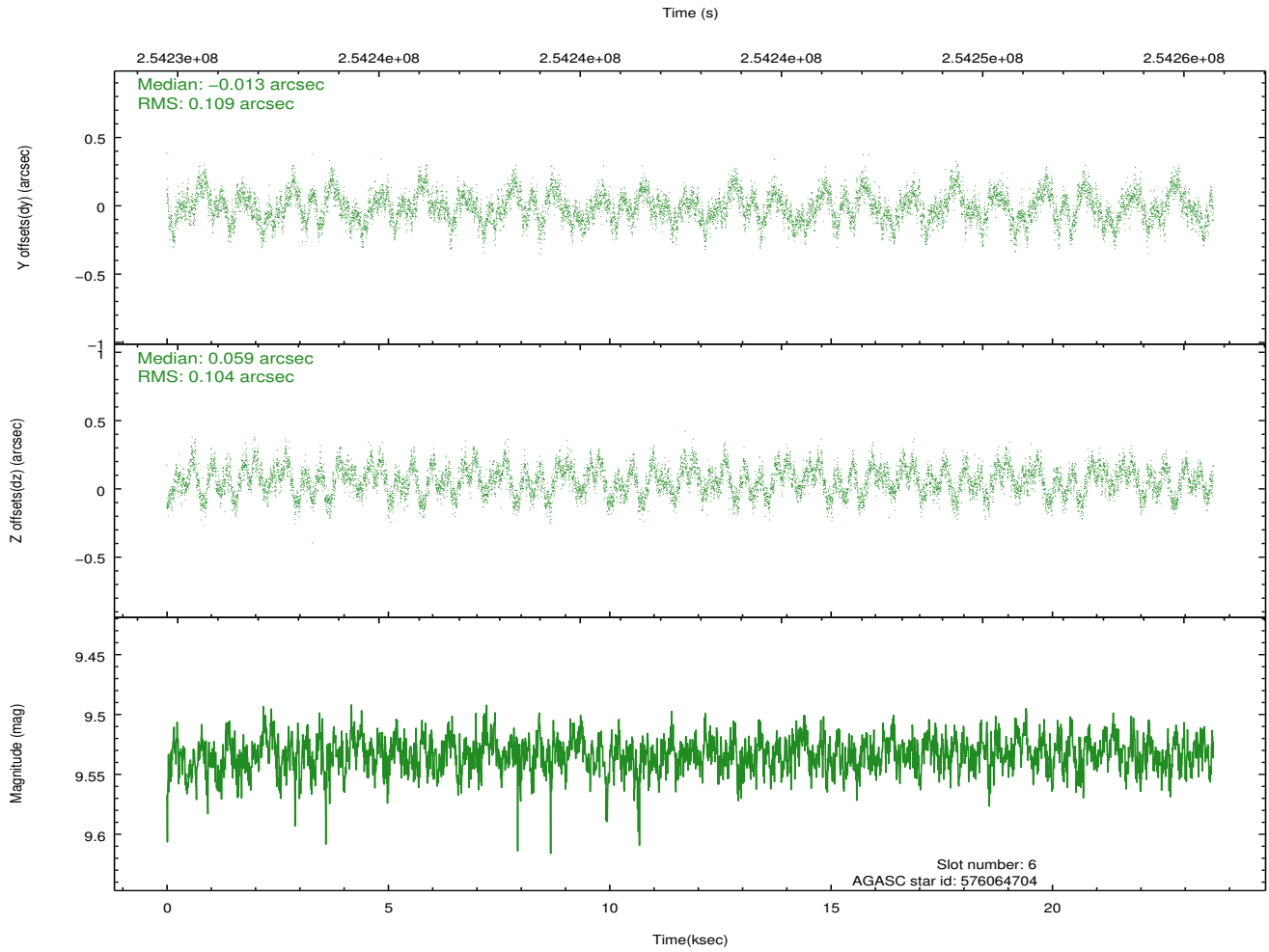
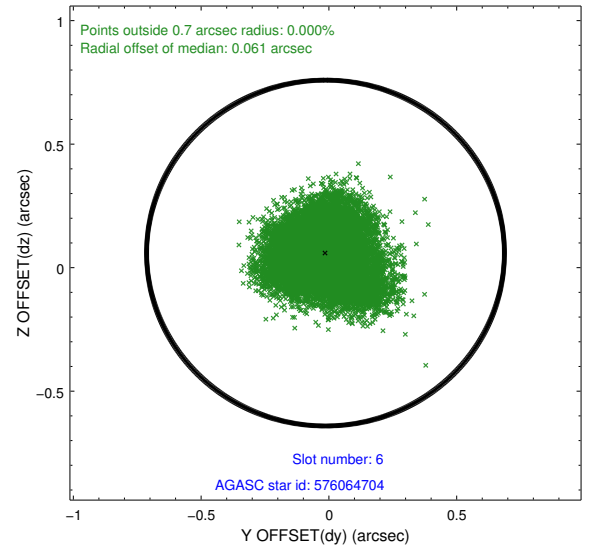
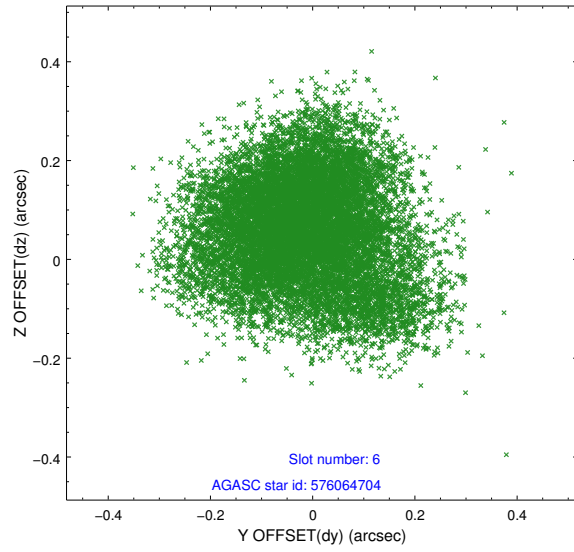
2.4.2 Slot 4



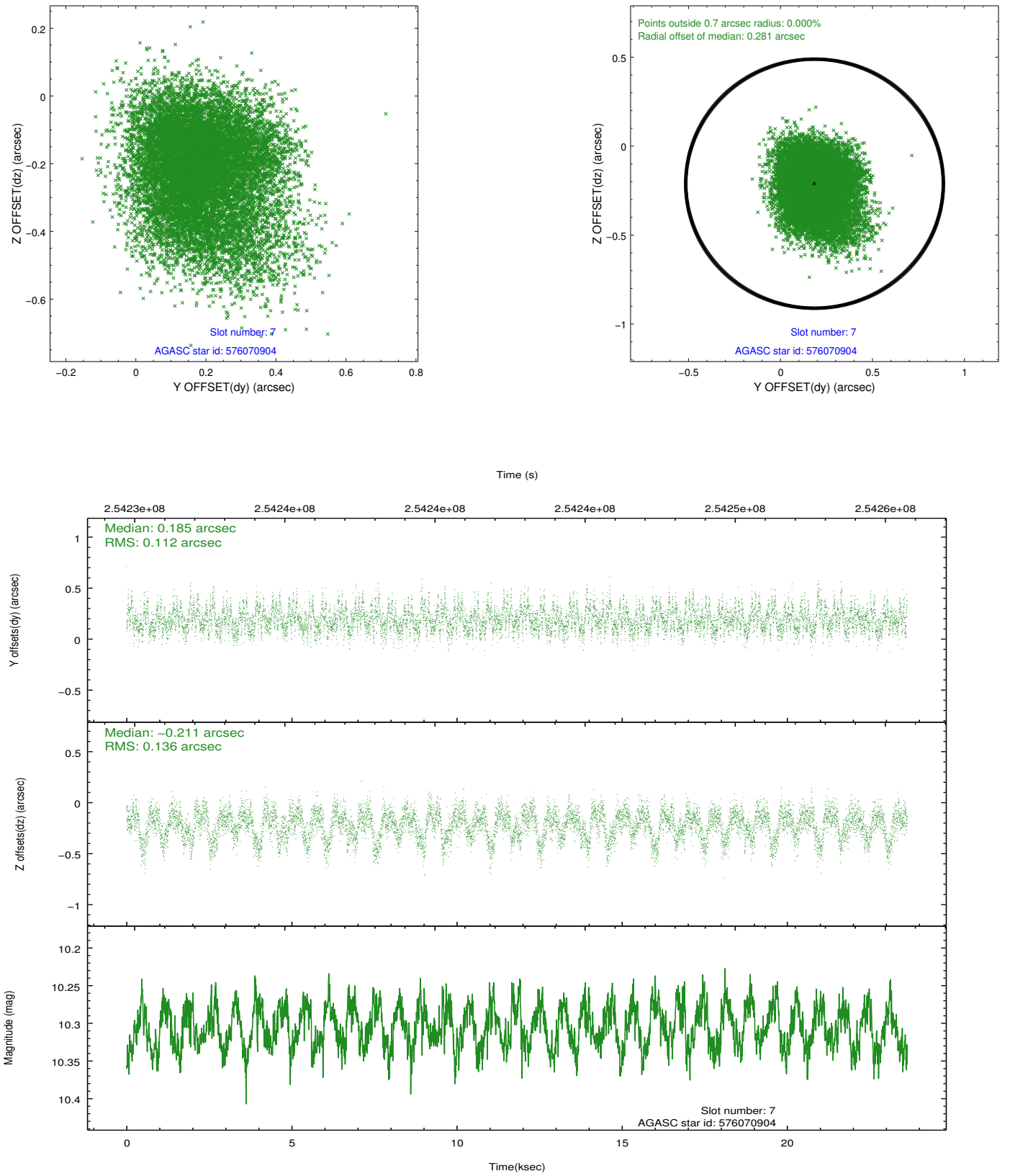
2.4.3 Slot 5



2.4.4 Slot 6

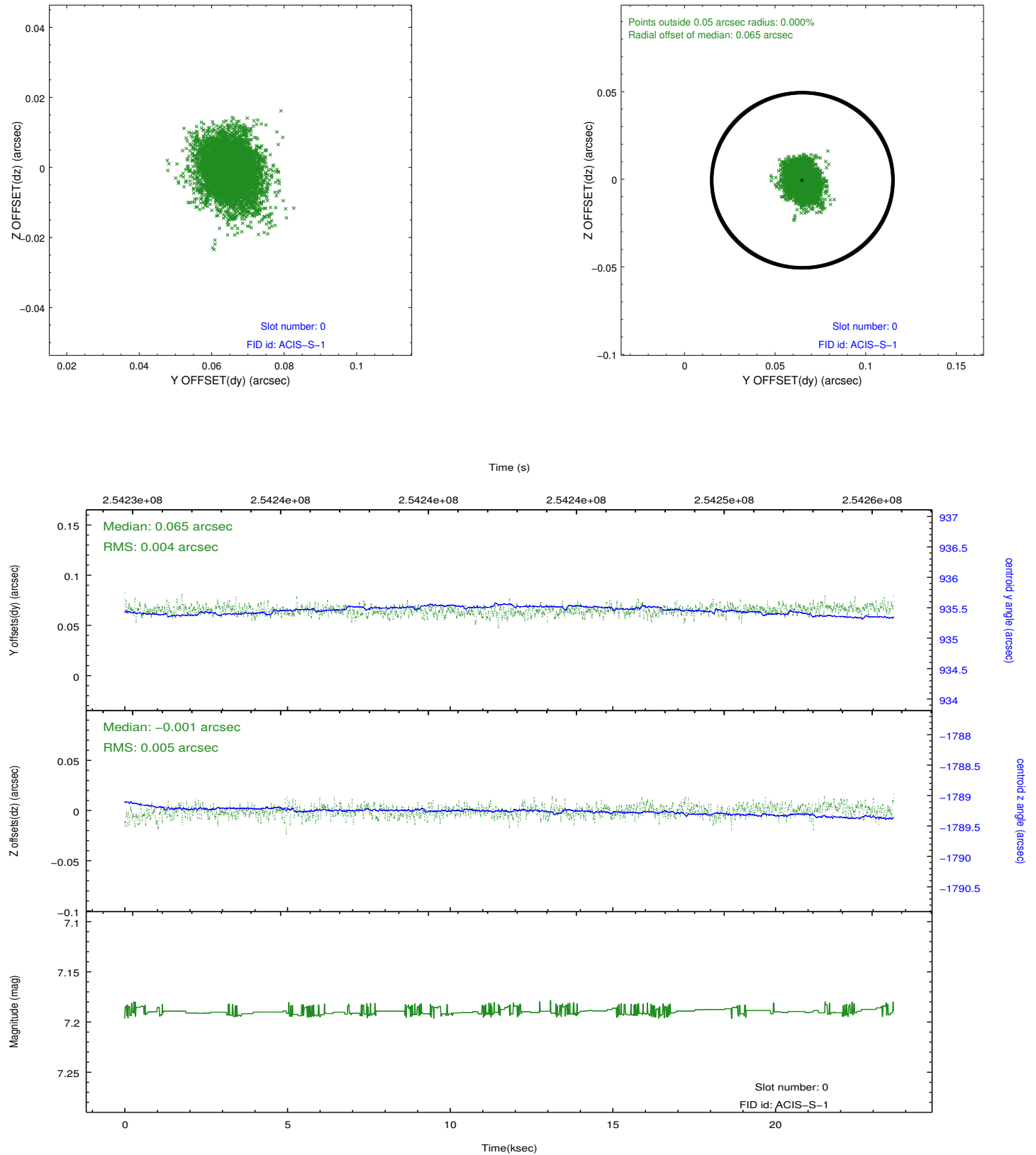


2.4.5 Slot 7

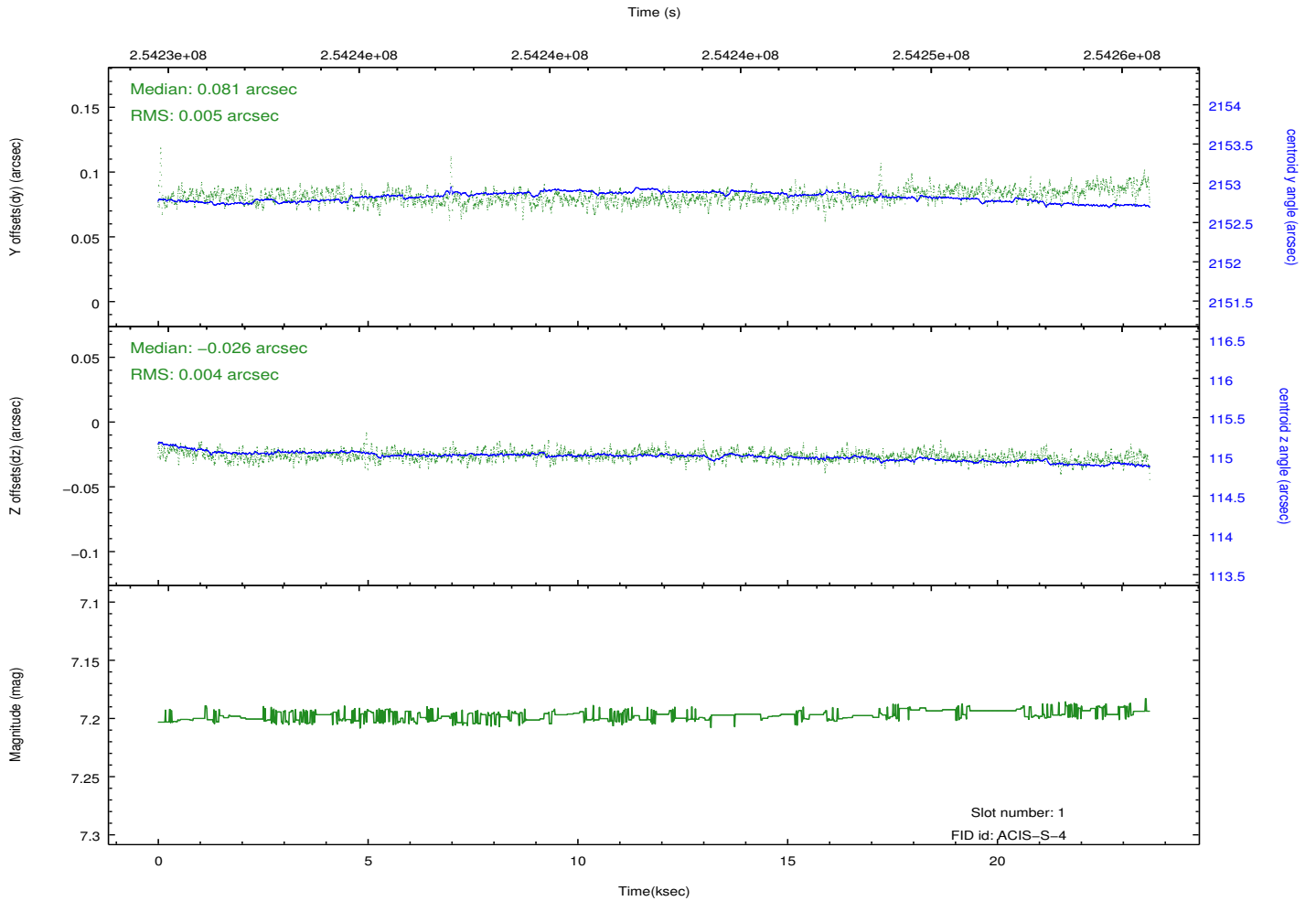
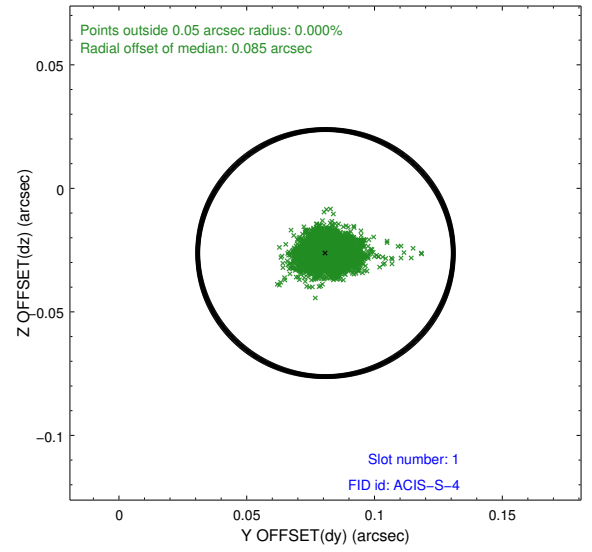
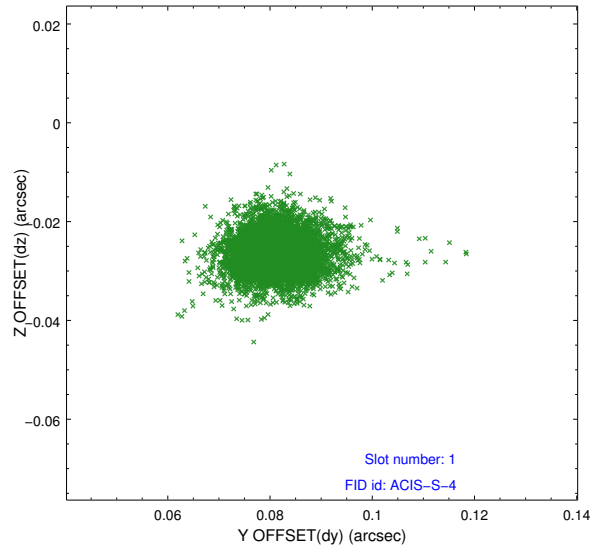


2.5 FID Slots

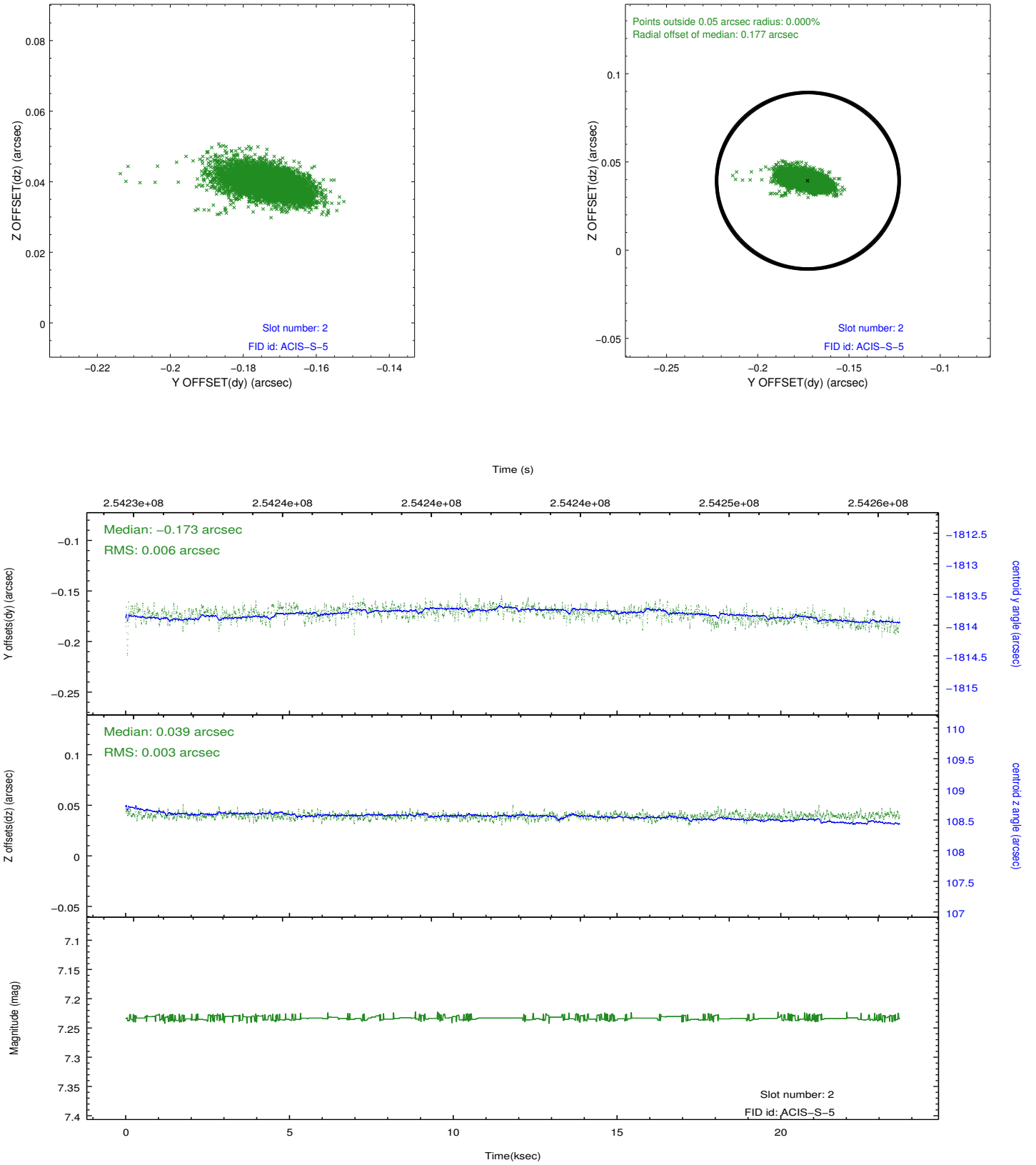
2.5.1 Slot 0



2.5.2 Slot 1

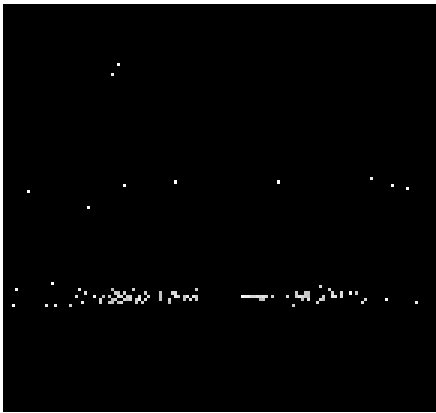


2.5.3 Slot 2

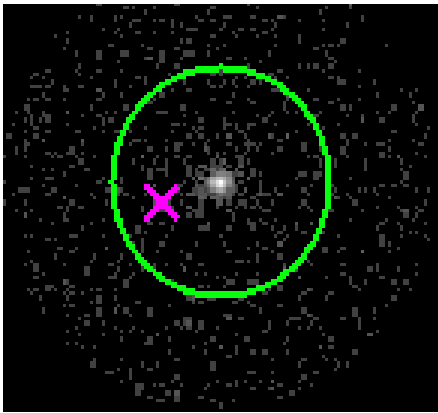


3 Gratings

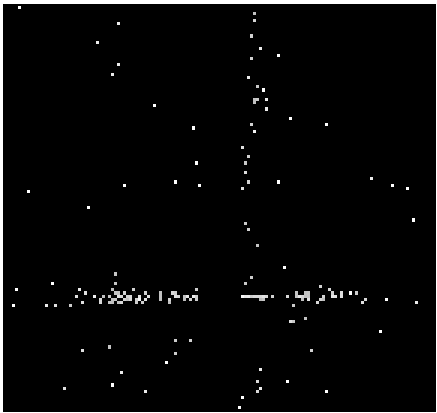
3.1 HEG Arm



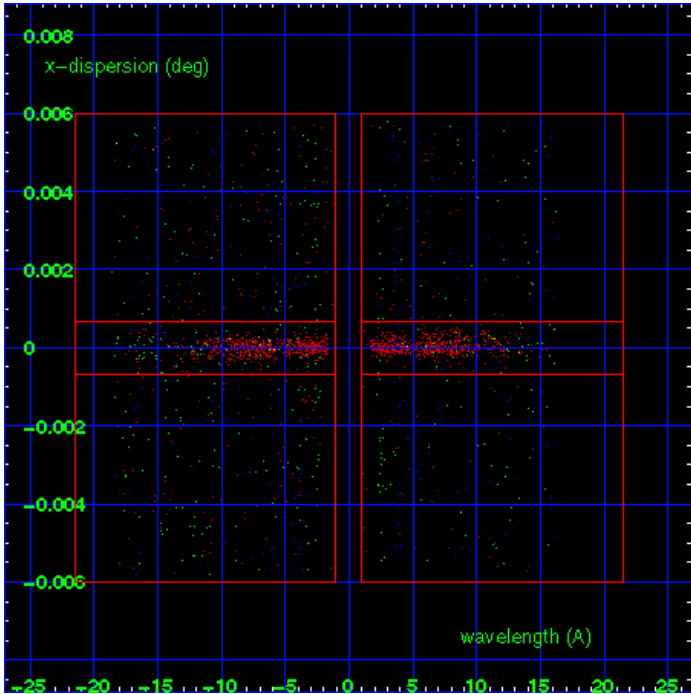
HEG Order Sort 123



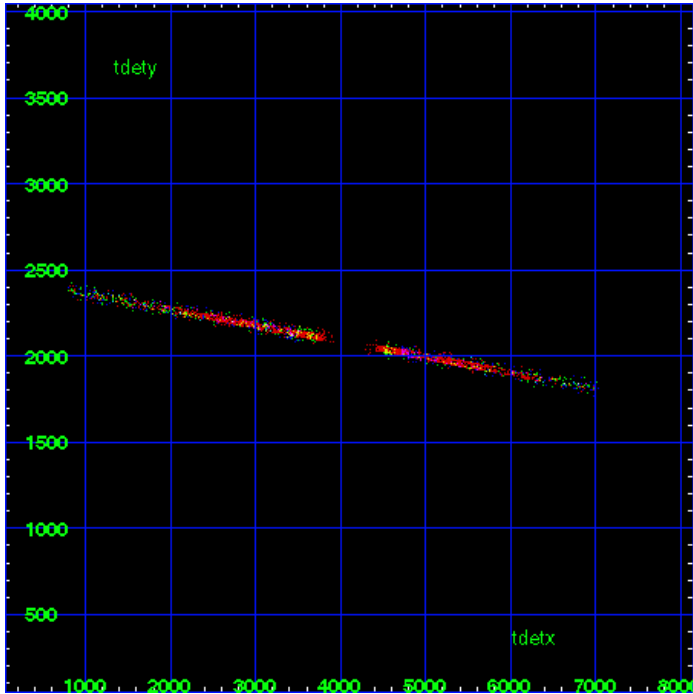
HEG Zero Order



HEG Order Sort ALL

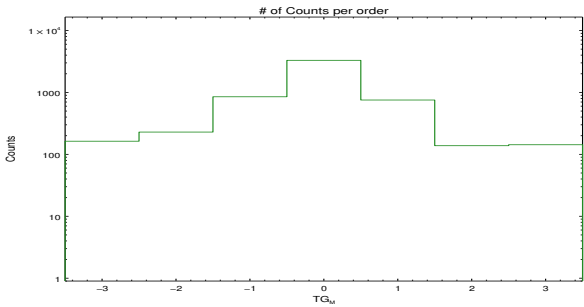


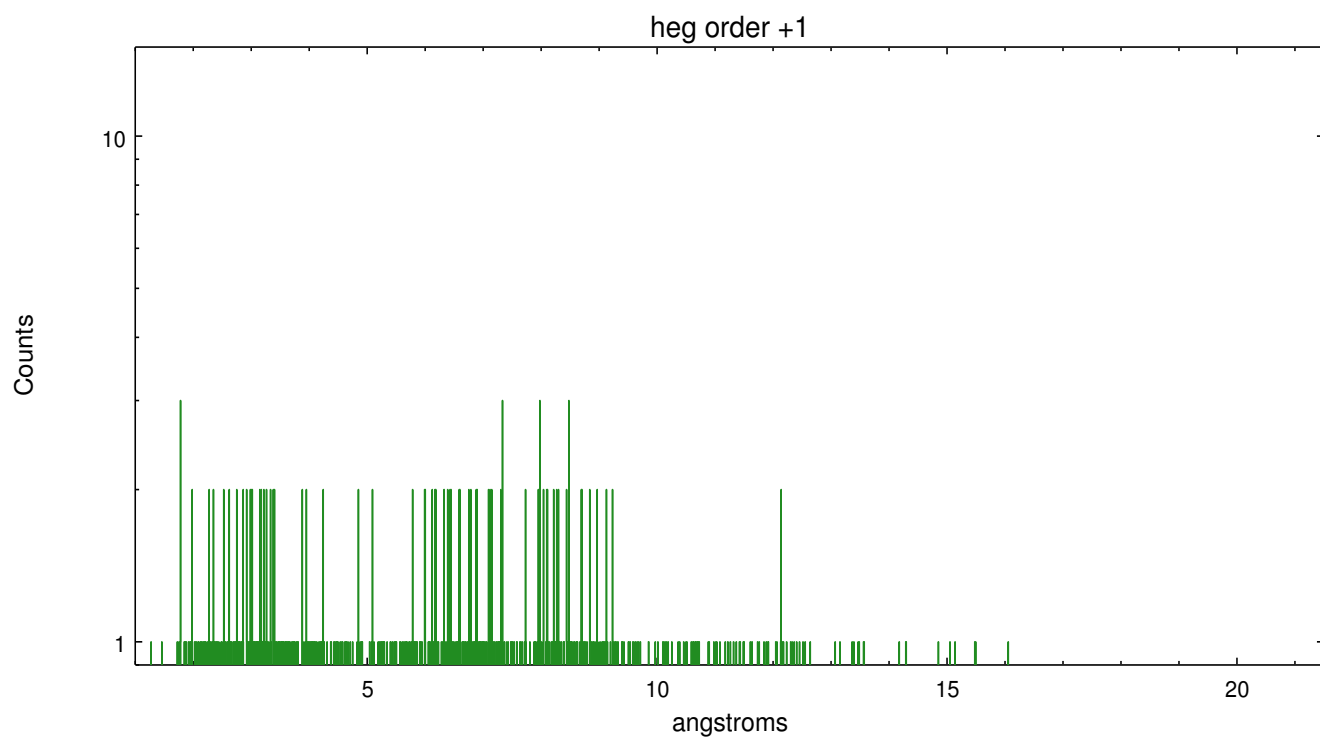
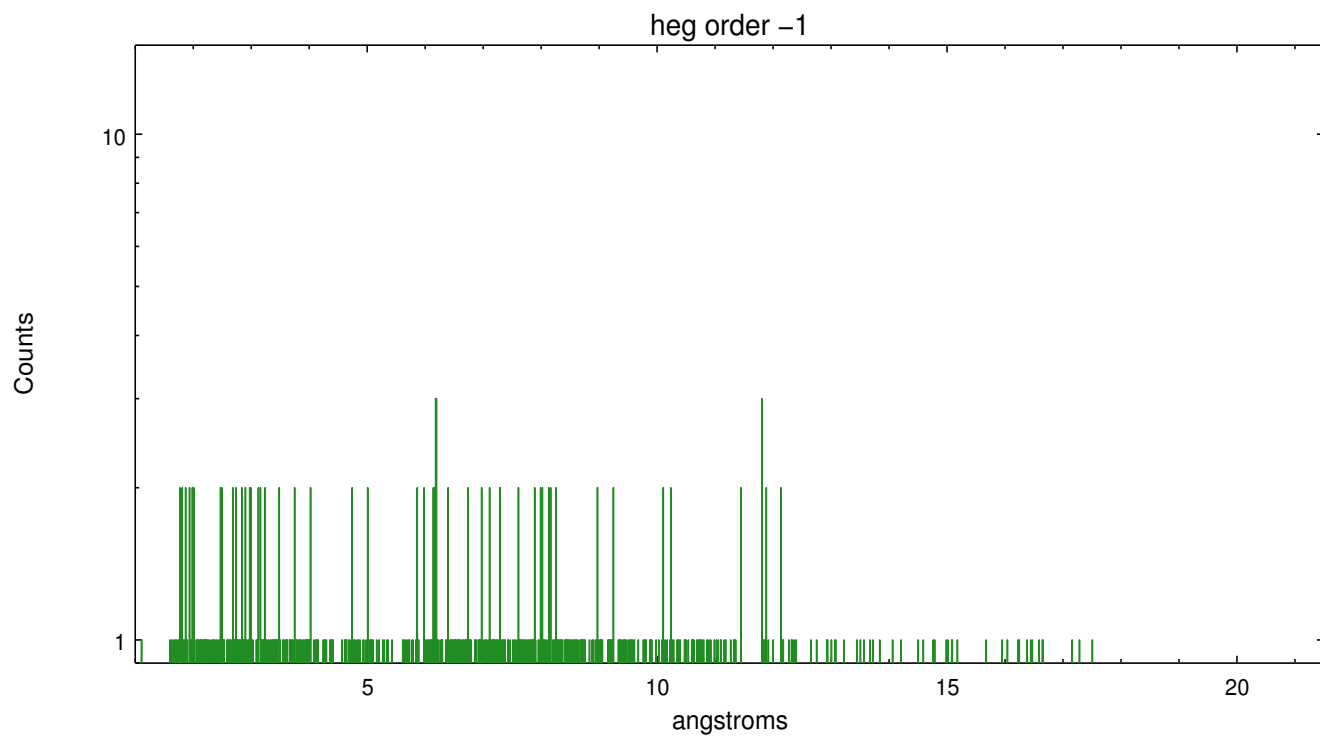
Spot Image HEG



Full Detector HEG

	order -3	order -2	order -1	order 0	order 1	order 2	order 3
Events	163	229	851	3298	754	138	143

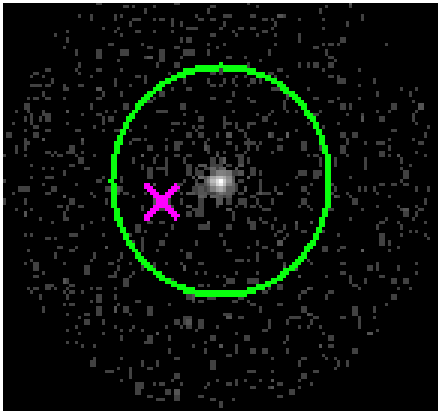




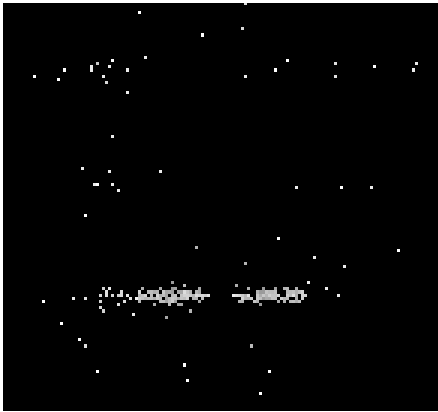
3.2 MEG Arm



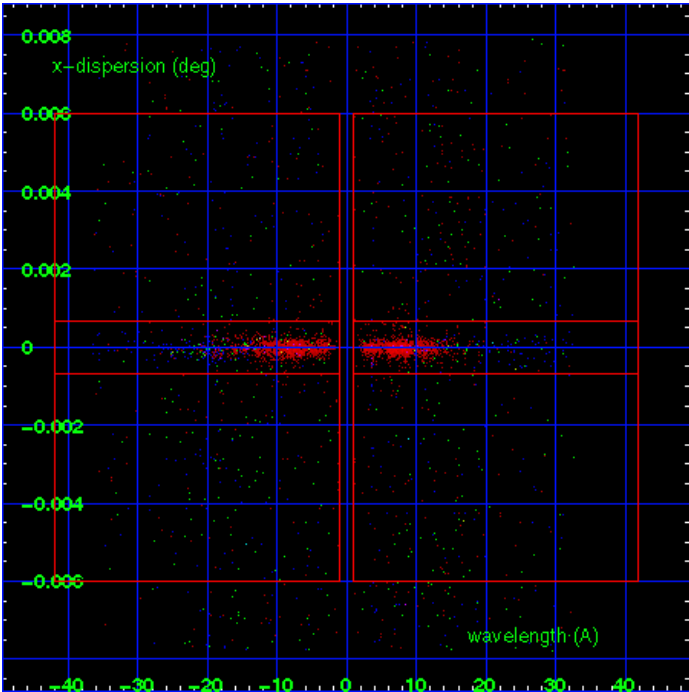
MEG Order Sort 123



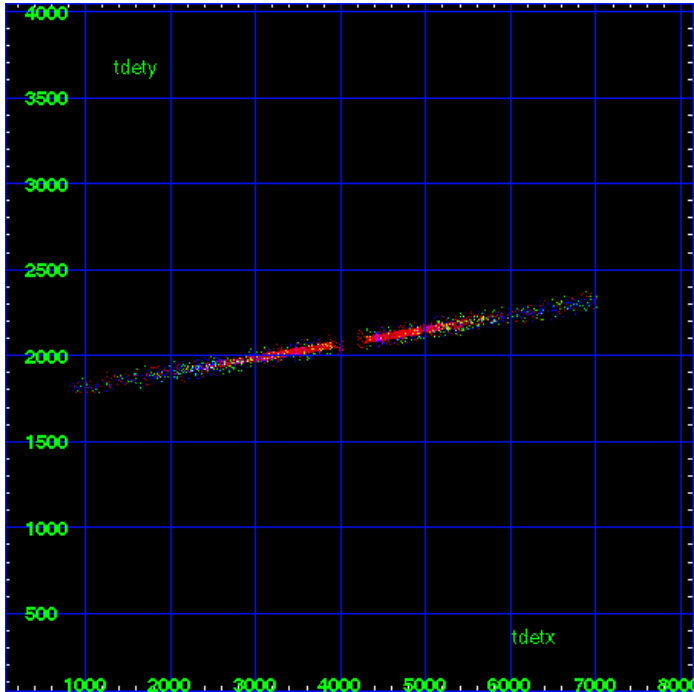
MEG Zero Order



MEG Order Sort ALL

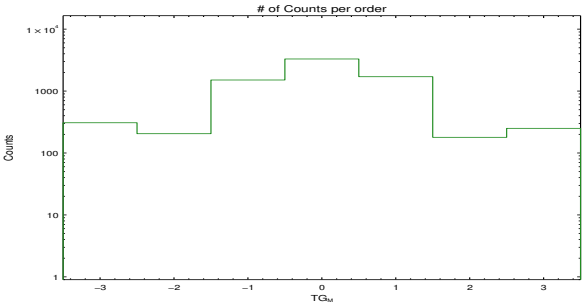


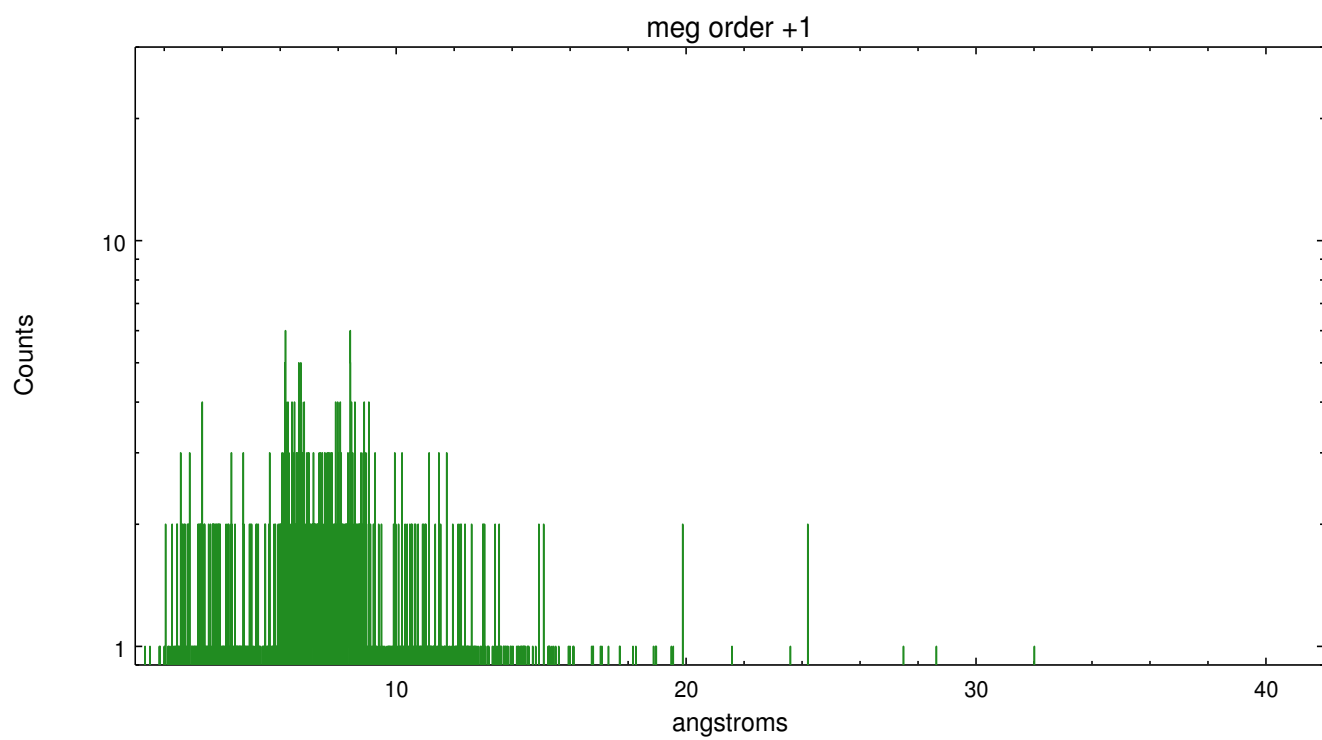
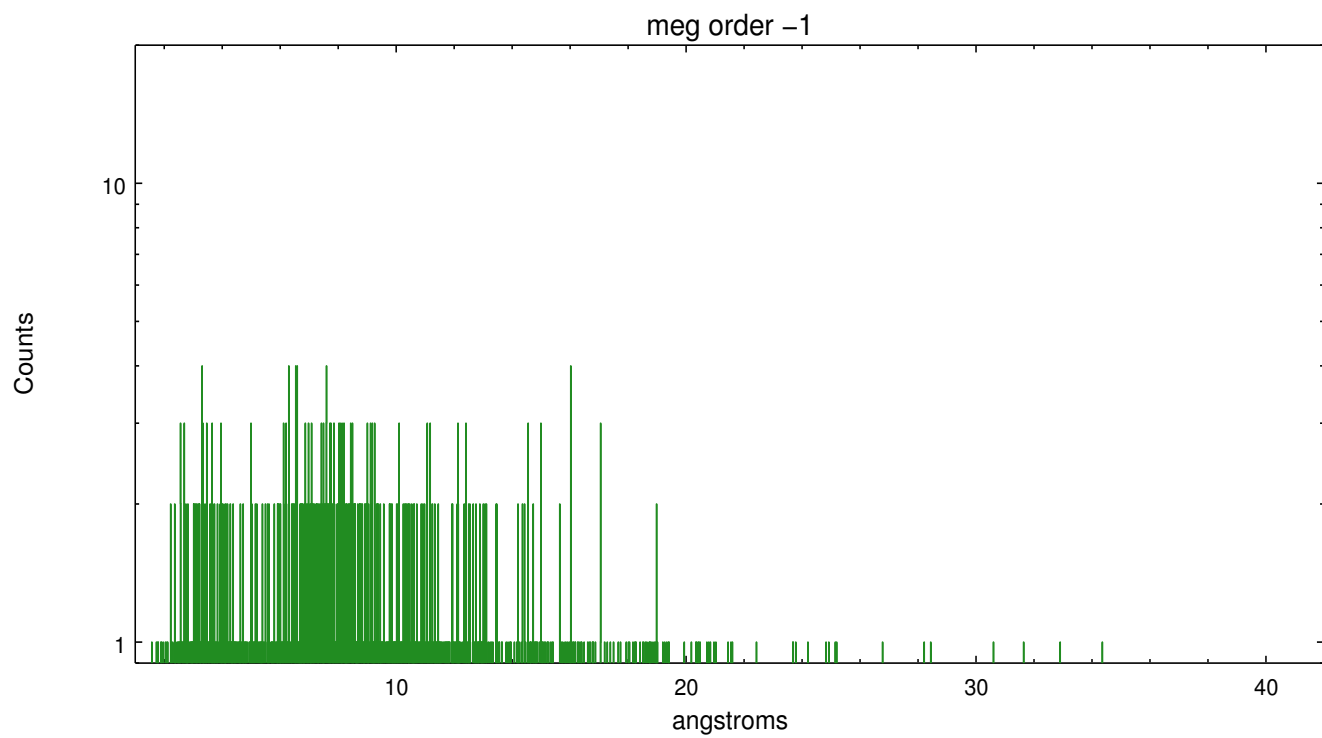
Spot Image MEG



Full Detector MEG

	order -3	order -2	order -1	order 0	order 1	order 2	order 3
Events	308	205	1509	3298	1706	179	250





A Summary

A.1 Status

V&V Scientist	Joy Nichols
V&V Date (YYYY-MM-DD)	2012.03.28
V&V Edition	1
V&V Disposition and Status	OK
V&V Charge Time	23.0425

A.2 Comments