

# V&V Reference Report

## L2 ASCDS Version : 8.4.3.1

Observation 7152 - L2 Version 2  
Chandra X-Ray Center

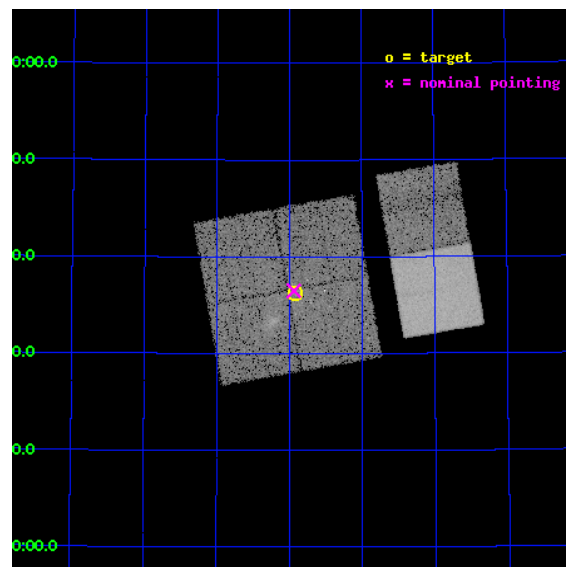
L2 Processing Date : Apr 4 2012

## Contents

<b>1</b>	<b>Front</b>	<b>2</b>
<b>2</b>	<b>OBI</b>	<b>3</b>
2.1	OBI . . . . .	3
2.1.1	Images . . . . .	3
2.1.2	Bias . . . . .	3
2.1.3	Parameters . . . . .	4
2.1.4	Events . . . . .	4
2.2	Compared Parameters . . . . .	5
2.3	Aspect . . . . .	6
2.4	Star Slots . . . . .	9
2.4.1	Slot 3 . . . . .	9
2.4.2	Slot 4 . . . . .	10
2.4.3	Slot 5 . . . . .	11
2.4.4	Slot 6 . . . . .	12
2.4.5	Slot 7 . . . . .	13
2.5	FID Slots . . . . .	14
2.5.1	Slot 0 . . . . .	14
2.5.2	Slot 1 . . . . .	15
2.5.3	Slot 2 . . . . .	16
<b>A</b>	<b>Summary</b>	<b>17</b>
A.1	Status . . . . .	17
A.2	Comments . . . . .	17

# 1 Front

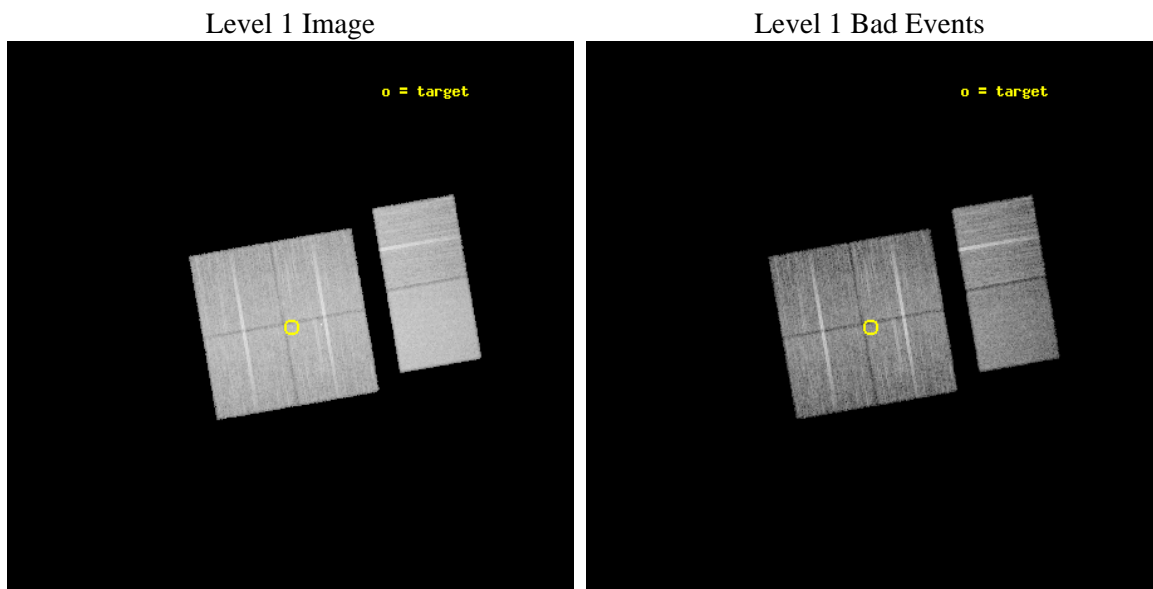
seq_num	600590	Sequence number
obs_id	7152	Observation id
title	Chandra observations of Dwingeloo 1 and Maffei 2	Proposal title
observer	Prof Christopher Reynolds	Principal investigator
object	Maffei 2	Source name
dtcycle	0	&#160
cycle	P	events from which exps? Prim/Second/Both
ra_targ	40.479583	Observer's specified target RA [deg]
dec_targ	59.604167	Observer's specified target Dec [deg]
ra_nom	40.484584448165	Nominal RA [deg]
dec_nom	59.608156488007	Nominal Dec [deg]
roll_nom	80.159226822466	Nominal Roll [deg]
revision	2	Processing version of data
ontime	12764.799952507	Sum of GTIs [s]
livetime	12603.164369469	Livetime [s]
ontime0	12764.799952507	Sum of GTIs [s]
ontime1	12764.799952507	Sum of GTIs [s]
ontime2	12764.799952507	Sum of GTIs [s]
ontime3	12764.799952507	Sum of GTIs [s]
ontime6	12764.799952507	Sum of GTIs [s]
ontime7	12764.799952507	Sum of GTIs [s]
l2events	125602	Number of level 2 events



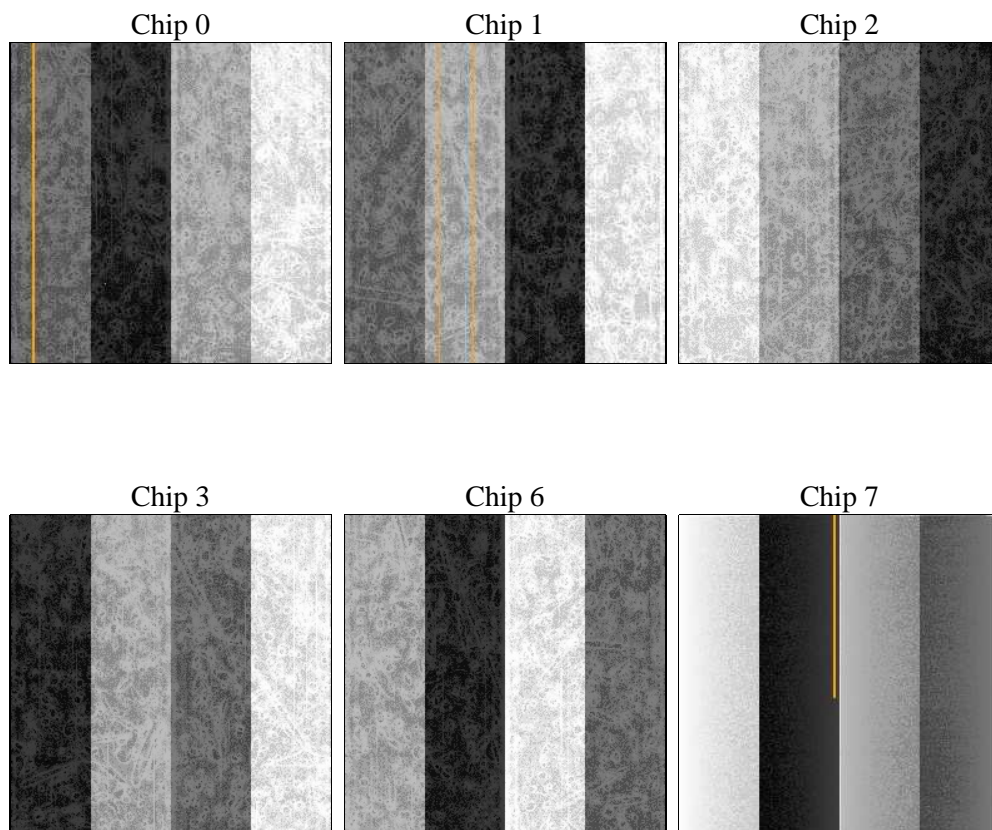
## 2 OBI

### 2.1 OBI

#### 2.1.1 Images



#### 2.1.2 Bias



### 2.1.3 Parameters

obi_num	0	Obi number	sched_exp_time	12810.367000	[s] Scheduled observation exposure time
ascdsver	8.4.3.1	Processing system revision	ontime	12764.799952507	Sum of GTIs [s]
caldsver	4.4.9	&#160	ontime0	12764.799952507	Sum of GTIs [s]
date	2012-04-04T20:13:28	Date and time of file creation	ontime1	12764.799952507	Sum of GTIs [s]
revision	2	Processing version of data	ontime2	12764.799952507	Sum of GTIs [s]
			ontime3	12764.799952507	Sum of GTIs [s]
			ontime6	12764.799952507	Sum of GTIs [s]
			ontime7	12764.799952507	Sum of GTIs [s]
			l1events	722209	Number of level 1 events

### 2.1.4 Events

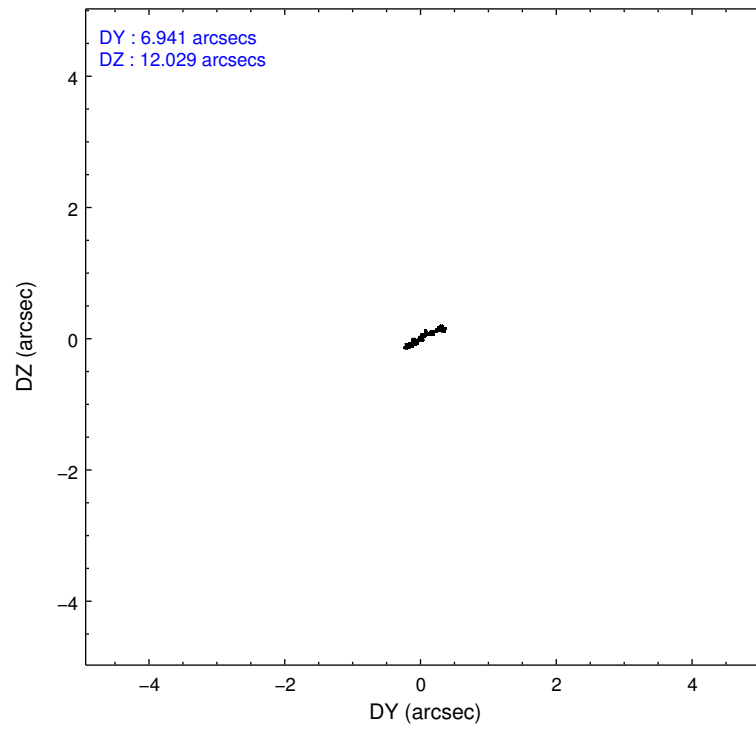
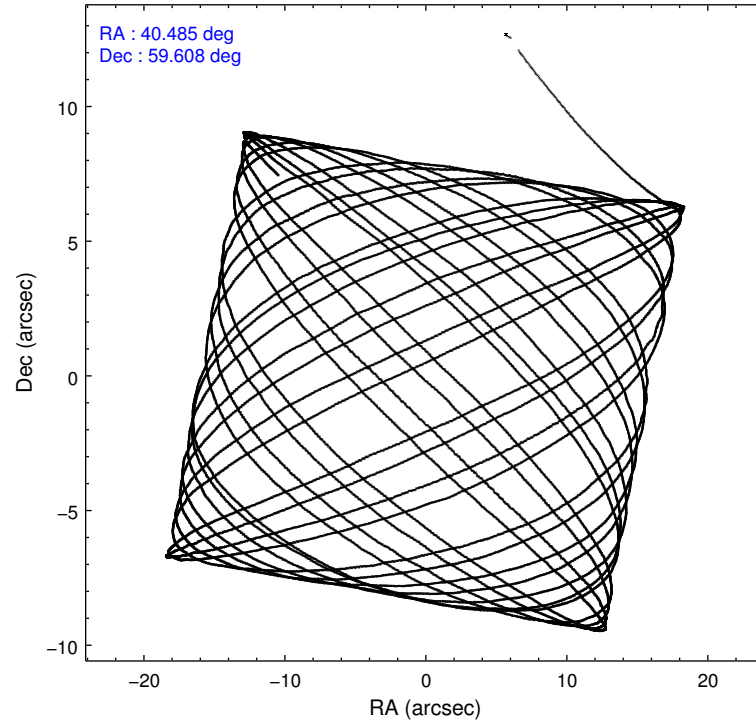
	ccd 0	ccd 1	ccd 2	ccd 3	ccd 6	ccd 7		ccd 0	ccd 1	ccd 2	ccd 3	ccd 6	ccd 7
level 1 events	105177	109624	114691	114648	121234	156835	grade 0 events	6035	6216	6072	6430	5203	5576
rejected events	91069	94439	101027	100390	107571	90957		5%	5%	5%	5%	4%	3%
rejected %	86%	86%	88%	87%	88%	57%	grade 1 events	45	57	59	79	70	162
								0%	0%	0%	0%	0%	0%
							grade 2 events	3066	3449	2848	2773	2989	13507
								2%	3%	2%	2%	2%	8%
							grade 3 events	1414	1400	1294	1289	1322	5782
								1%	1%	1%	1%	1%	3%
							grade 4 events	1242	1350	1249	1320	1376	5562
								1%	1%	1%	1%	1%	3%
							grade 5 events	4567	5007	4344	5225	5427	14812
								4%	4%	3%	4%	4%	9%
							grade 6 events	2354	2776	2207	2451	2778	35468
								2%	2%	1%	2%	2%	22%
							grade 7 events	86454	89369	96618	95081	102069	75966
								82%	81%	84%	82%	84%	48%

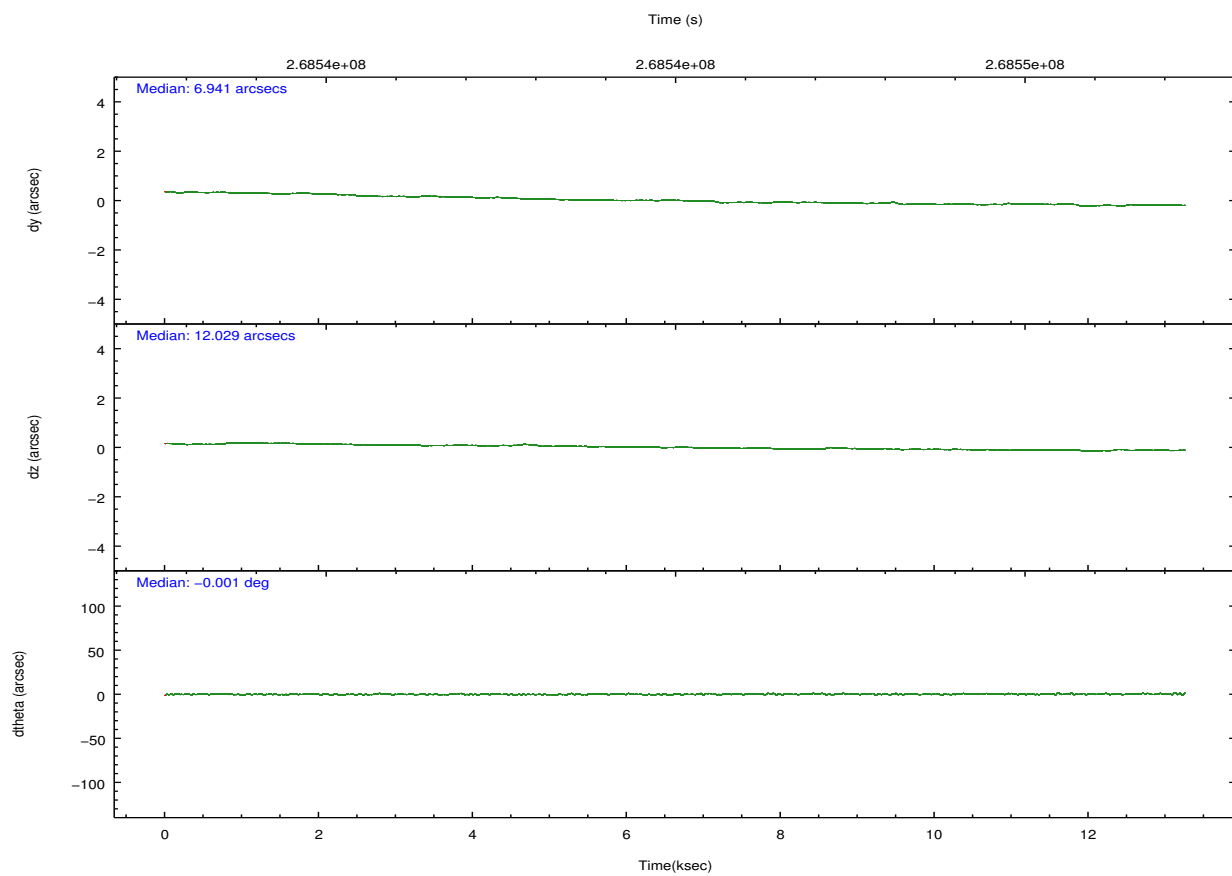
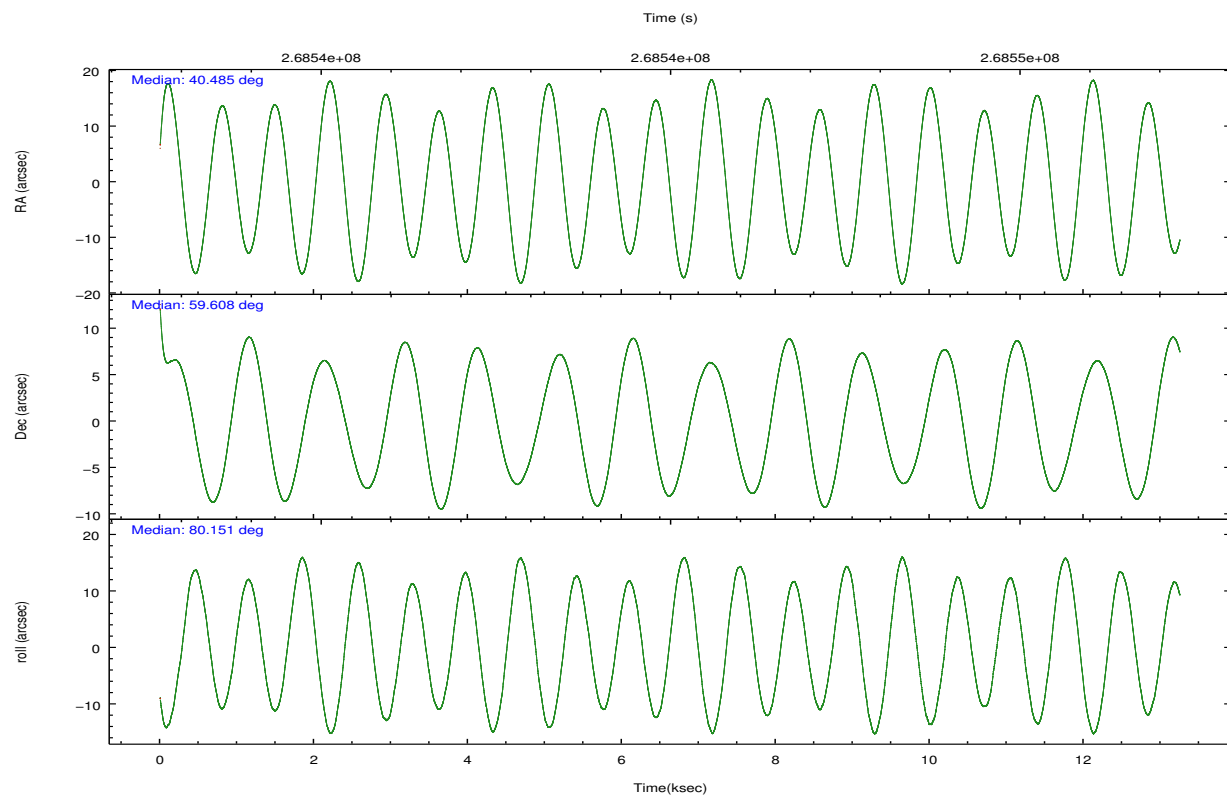


## 2.2 Compared Parameters

Parameter	Planned	Actual	Parameter	Planned	Actual
Instrument	ACIS	ACIS	Obspar format version number	7	7
Detector	ACIS-012367	ACIS-012367	Obspar file type	PREDICTED	ACTUAL
Grating	NONE	NONE	Obspar update status	NONE	UPDATED
Data mode	FAINT	FAINT	Number of optional ACIS chips dropped	0	0
Observation mode	POINTING	POINTING	On-chip summing requested	N	N
[deg] Pointing RA	40.503412	40.4845844481647	Subarray requested	NONE	NONE
[deg] Pointing Dec	59.582430	59.60815648800695	Alternating exposures requested	N	N
[deg] Pointing Roll	79.934313	80.15922682246556	[s] Primary exposure time	0.000000	3.2
[mm] SIM focus pos	-0.782348	-0.7809083437167272			
[mm] SIM defocus	0	0.001439871863259334			
[mm] SIM translation stage pos	-233.592463	-233.5874344608287			
[mm] SIM translation stage offset	0	-0.005018542100998502			
[s] Observation start time (MET)	268538818.184000	268537728.67709			
Observation start date	2006-07-06T02:05:53	2006-07-06T01:48:48			
[s] Observation end time (MET)	268551628.184000	268552382.07778			
Observation end date	2006-07-06T05:39:23	2006-07-06T05:53:02			
Read mode	TIMED	TIMED			

## 2.3 Aspect



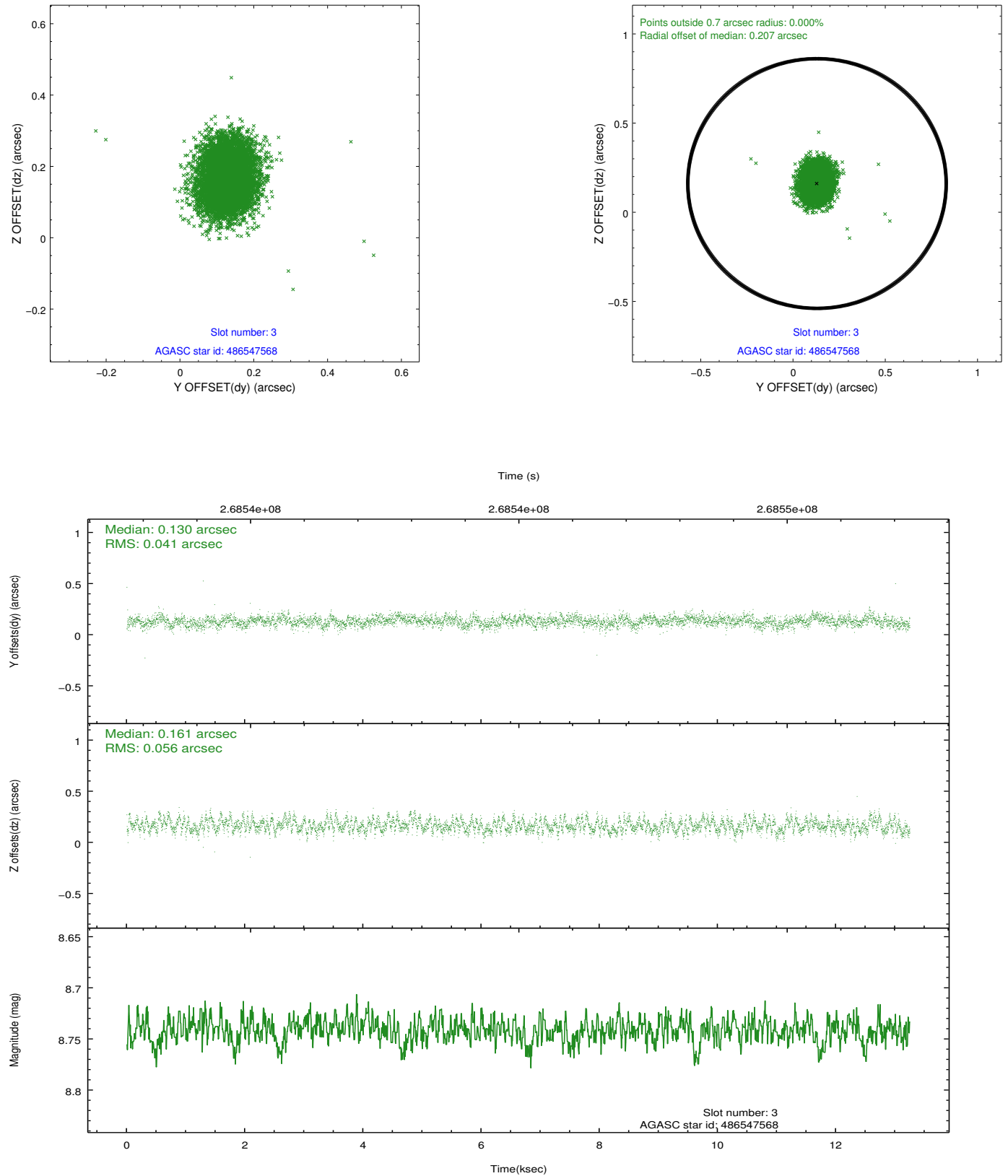


### Slot Statistics

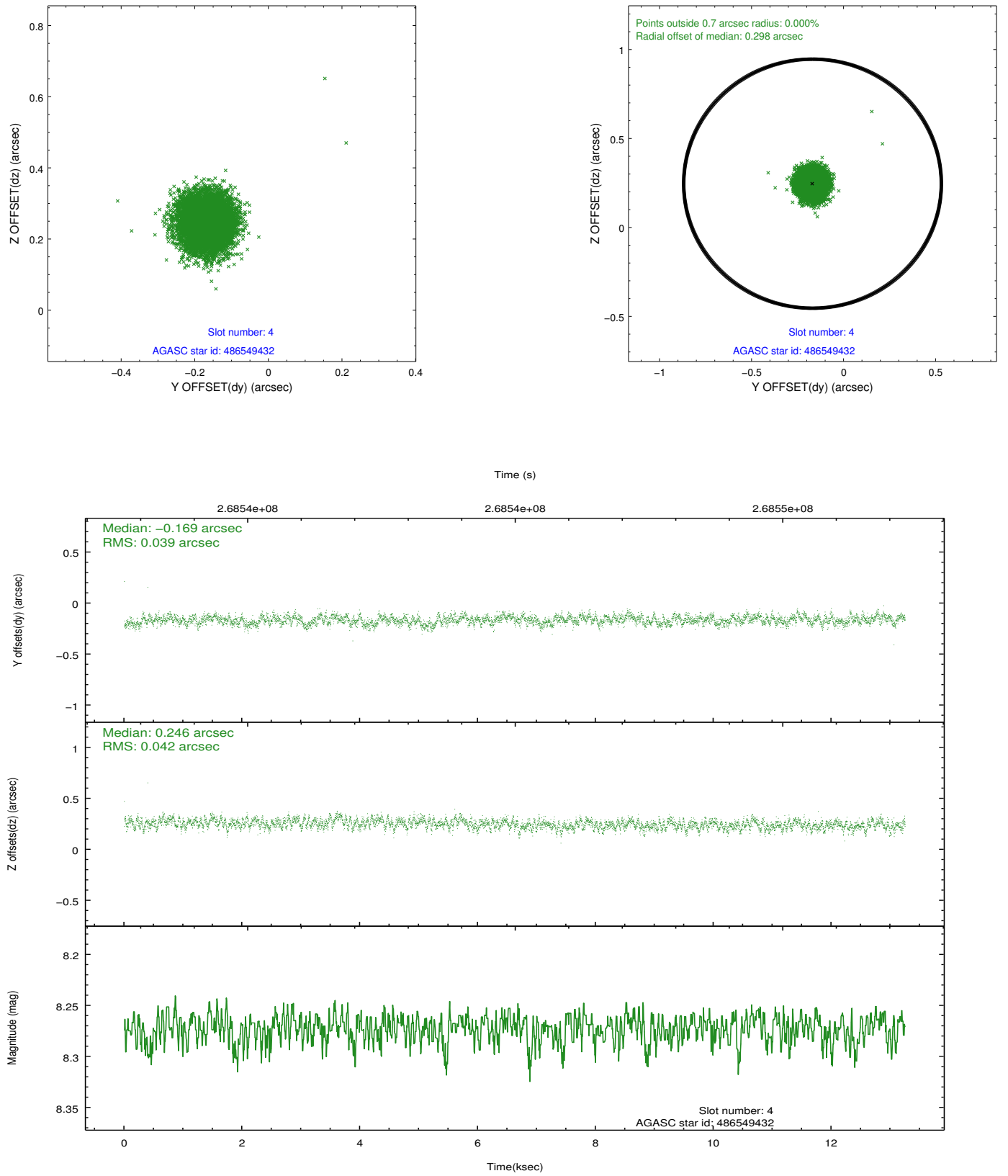
slot	status	id	mag	n_pts	med_dy	med_dz	dr1	dr2	ra	dec	mean_y	mean_z
0	FID	ACIS-I-1	7.24	3233	0.049	-0.045	0.013	0.019	0.000000	0.000000	932.75	-835.62
1	FID	ACIS-I-5	7.23	3233	-0.158	0.062	0.009	0.014	0.000000	0.000000	-1815.33	1061.84
2	FID	ACIS-I-6	7.24	3233	0.018	0.052	0.010	0.016	0.000000	0.000000	397.91	1706.71
3	GUIDE	486547568	8.74	6461	0.130	0.161	0.073	0.119	40.925412	59.242194	-1067.65	-978.68
4	GUIDE	486549432	8.27	6461	-0.169	0.246	0.062	0.097	41.631230	59.590031	403.24	-2015.20
5	GUIDE	530450832	7.15	6465	-0.126	-0.230	0.062	0.100	39.358868	60.088437	1451.62	2344.41
6	GUIDE	484847512	8.05	6463	0.039	-0.216	0.054	0.088	39.067323	59.168888	-1900.88	2353.69
7	GUIDE	486548600	7.93	6462	0.126	0.042	0.060	0.095	40.788601	58.889437	-2362.60	-957.84

## 2.4 Star Slots

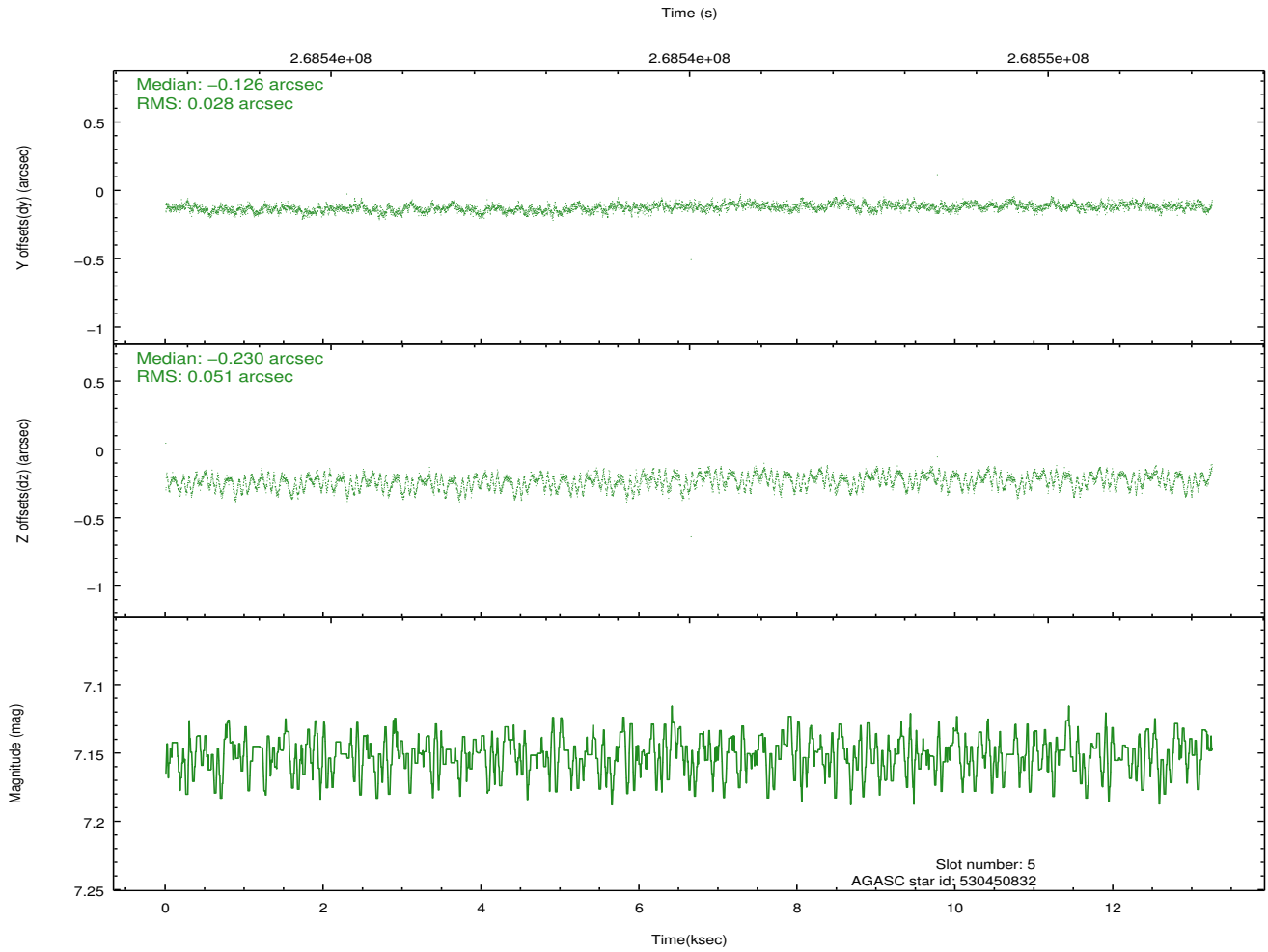
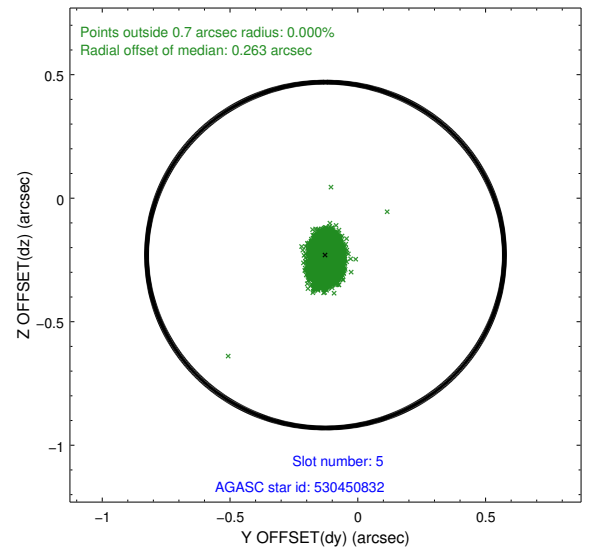
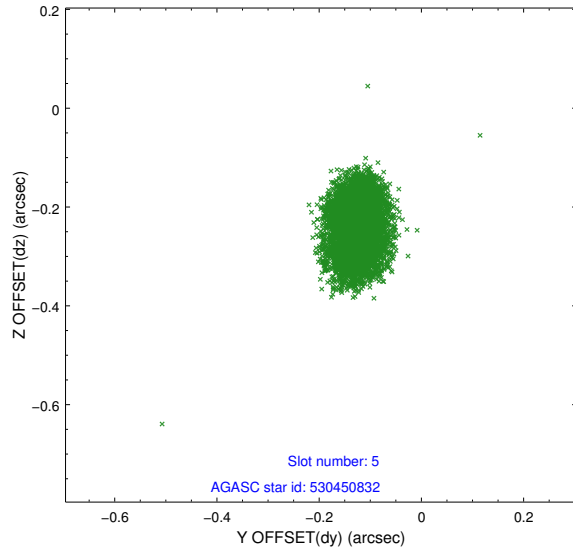
### 2.4.1 Slot 3



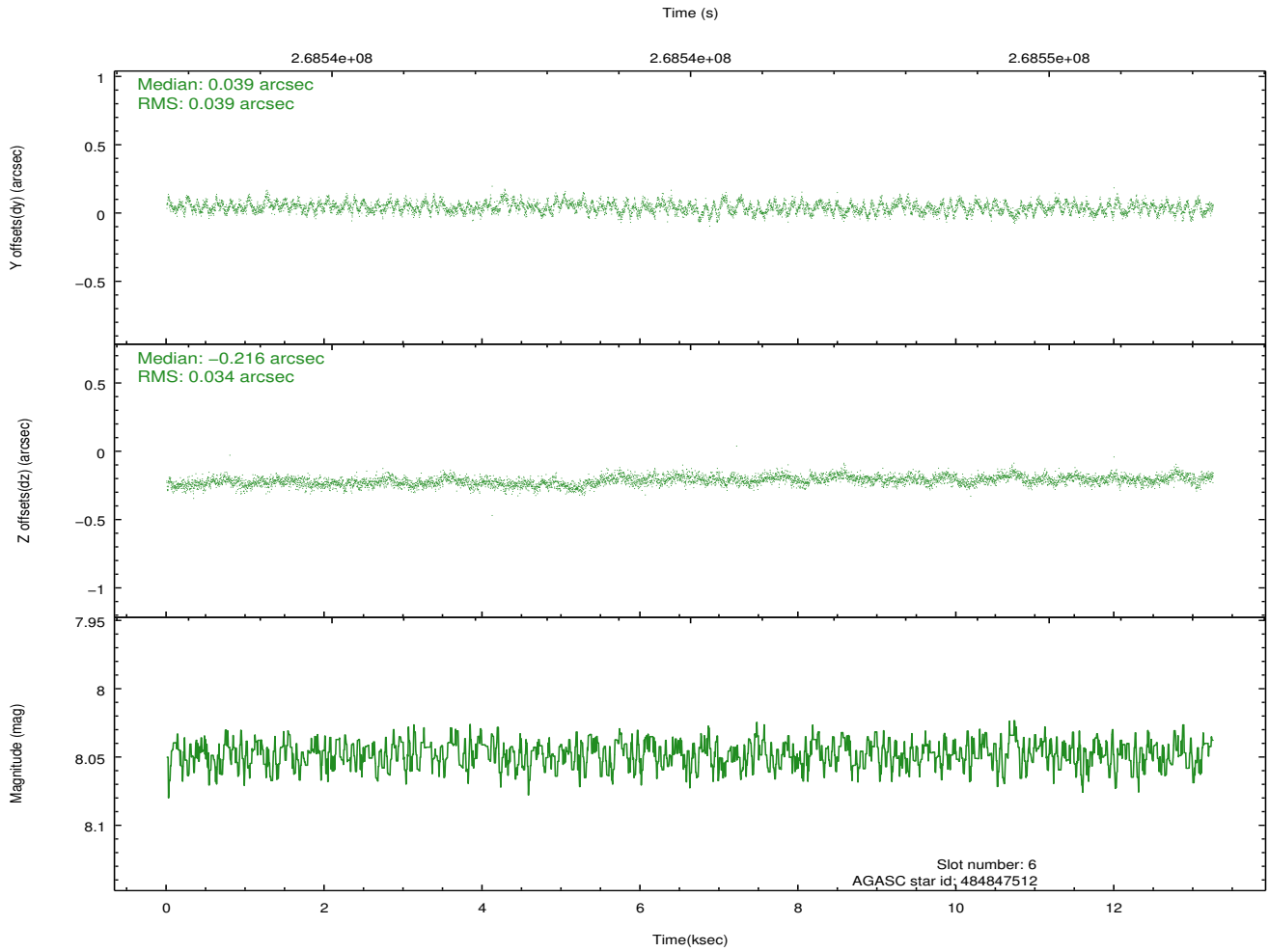
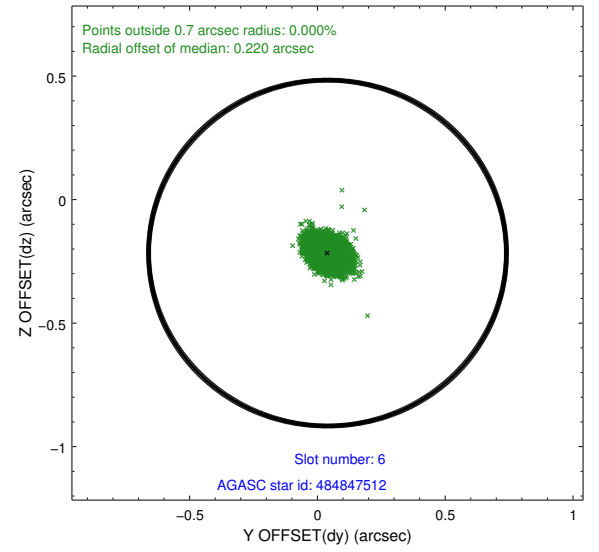
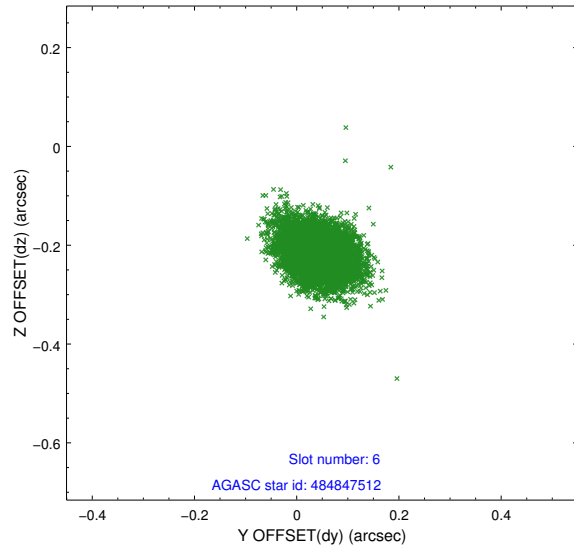
## 2.4.2 Slot 4



### 2.4.3 Slot 5

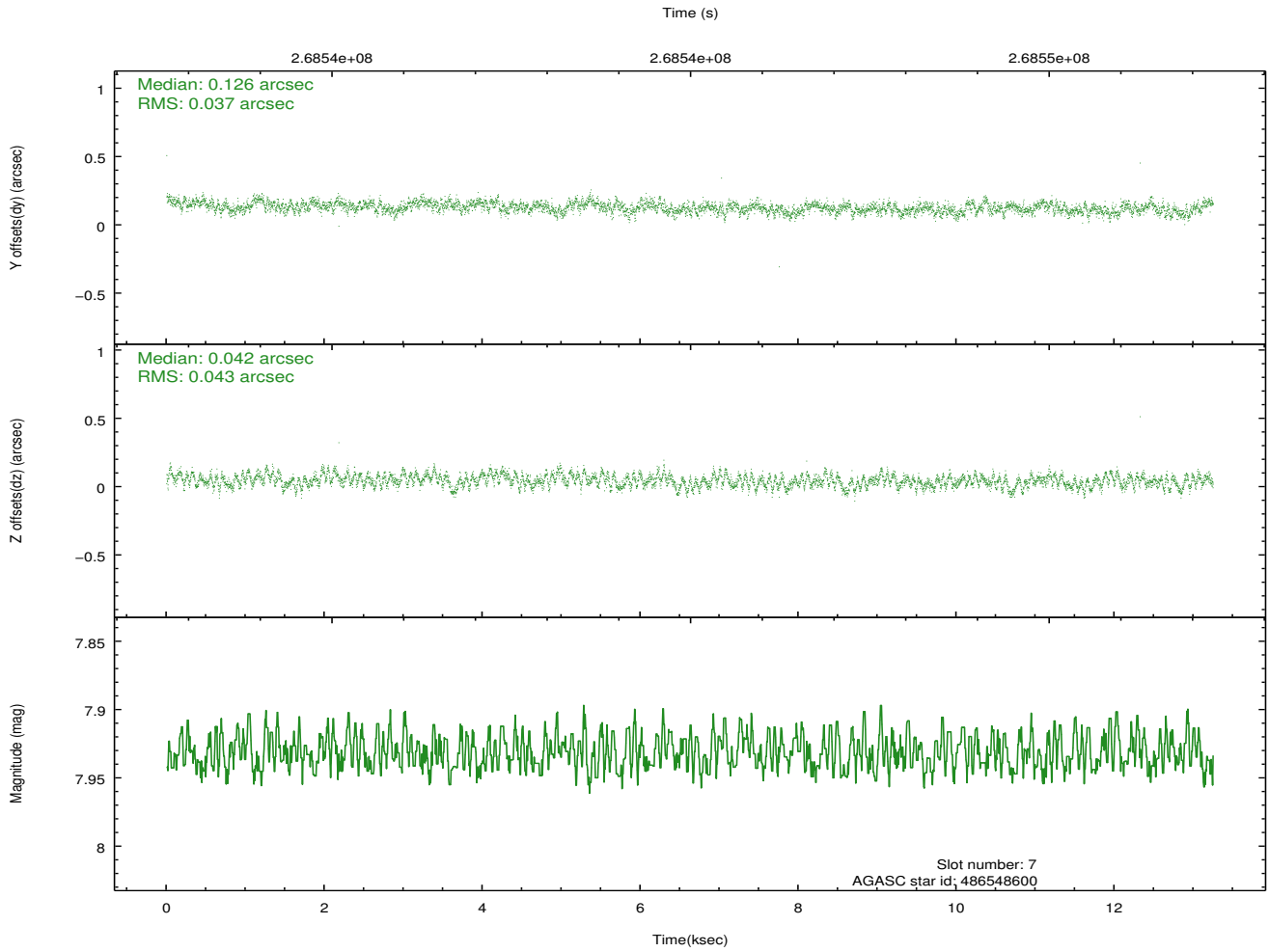
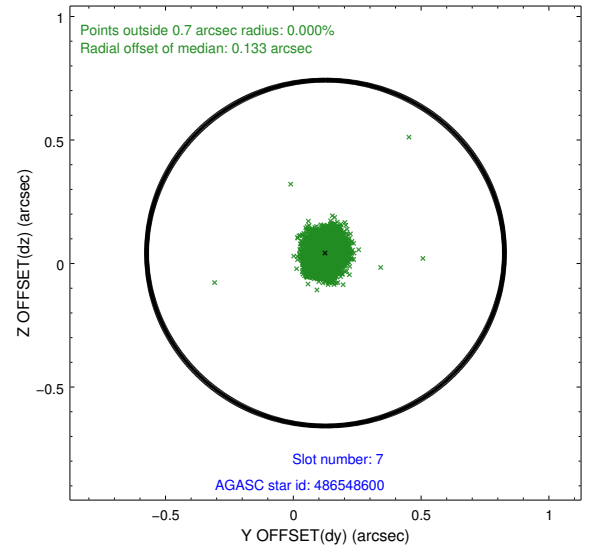
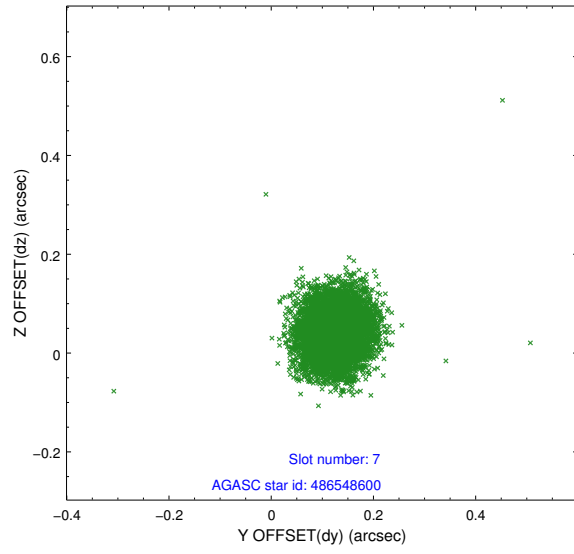


## 2.4.4 Slot 6



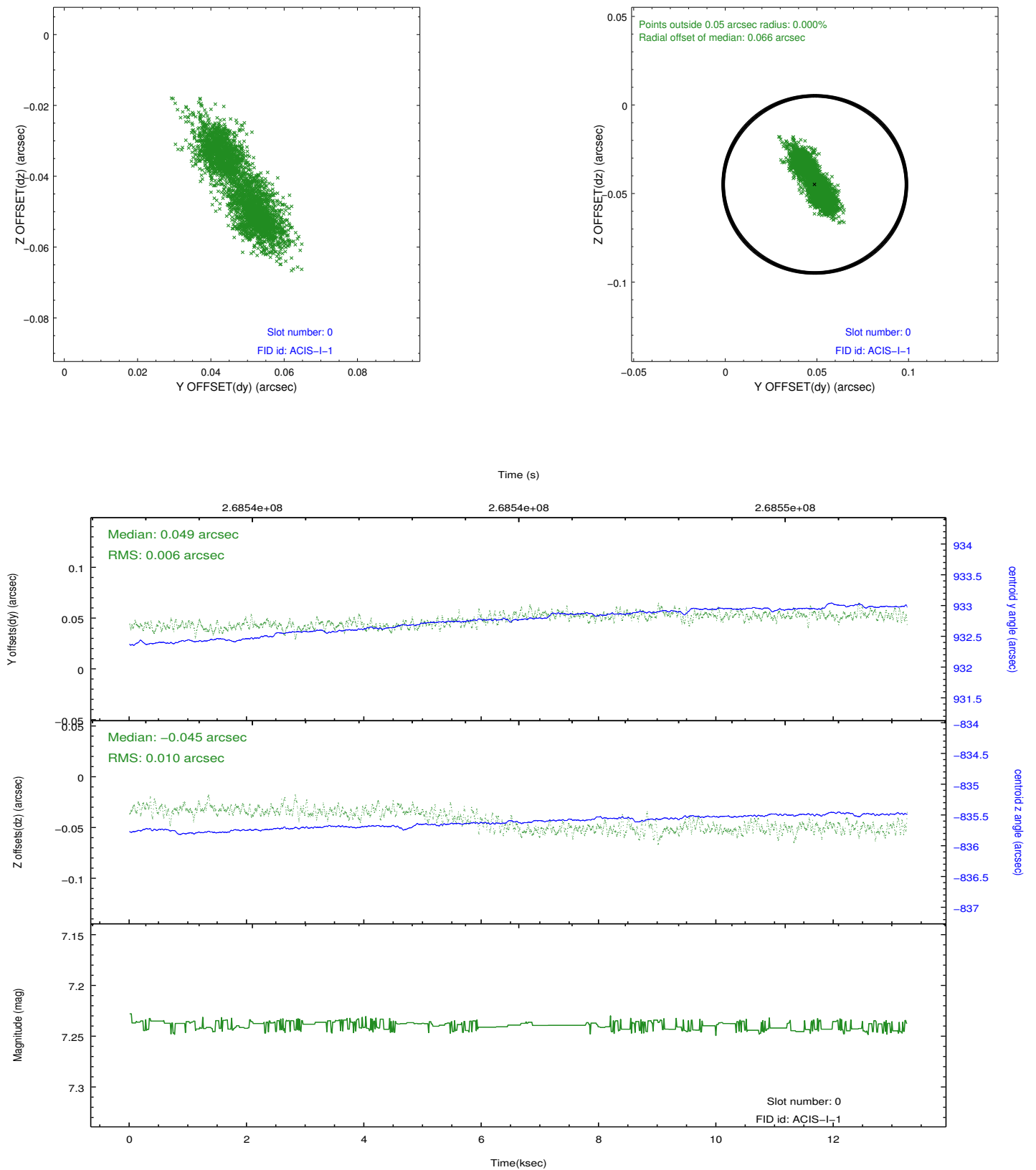


## 2.4.5 Slot 7

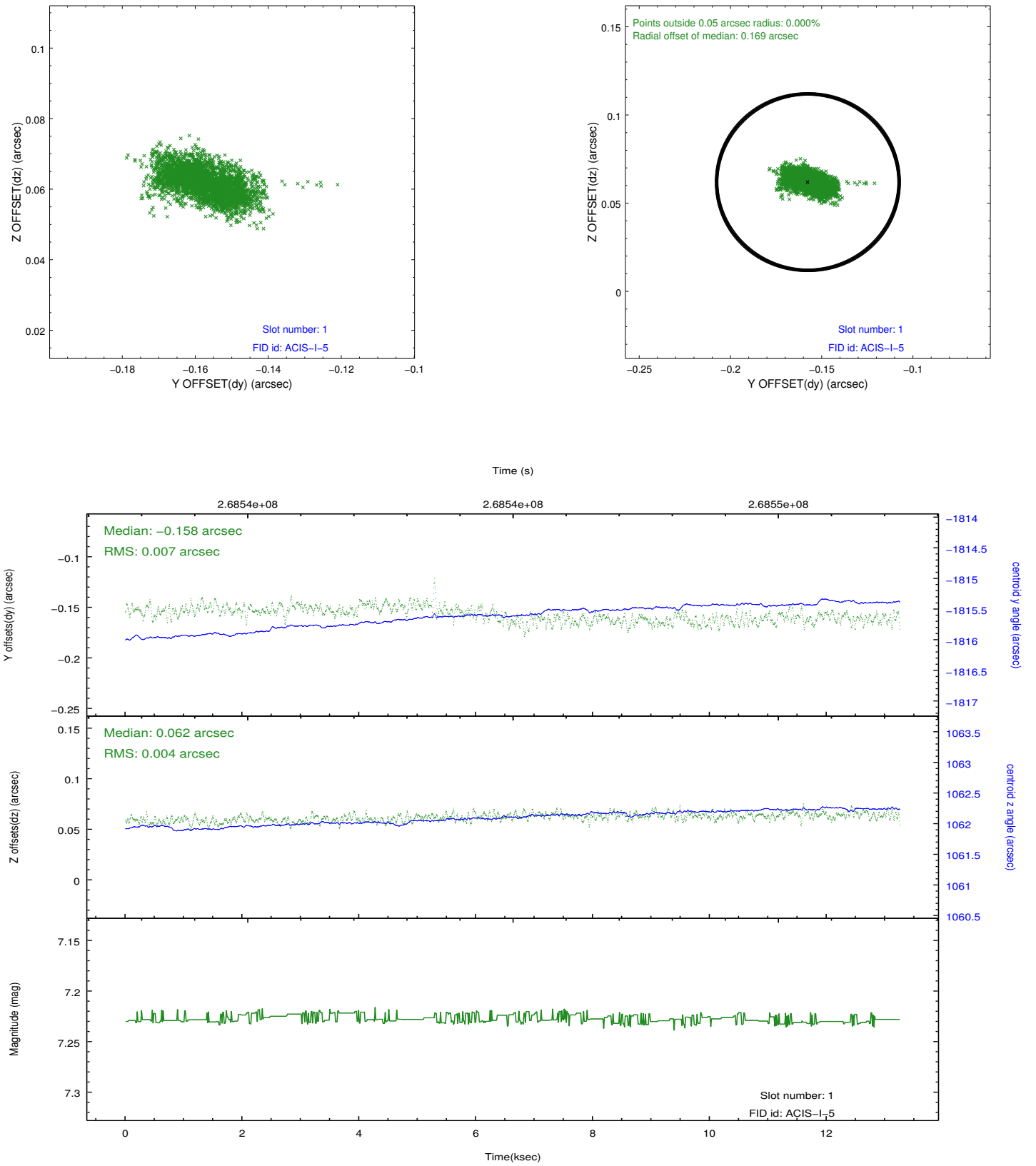


## 2.5 FID Slots

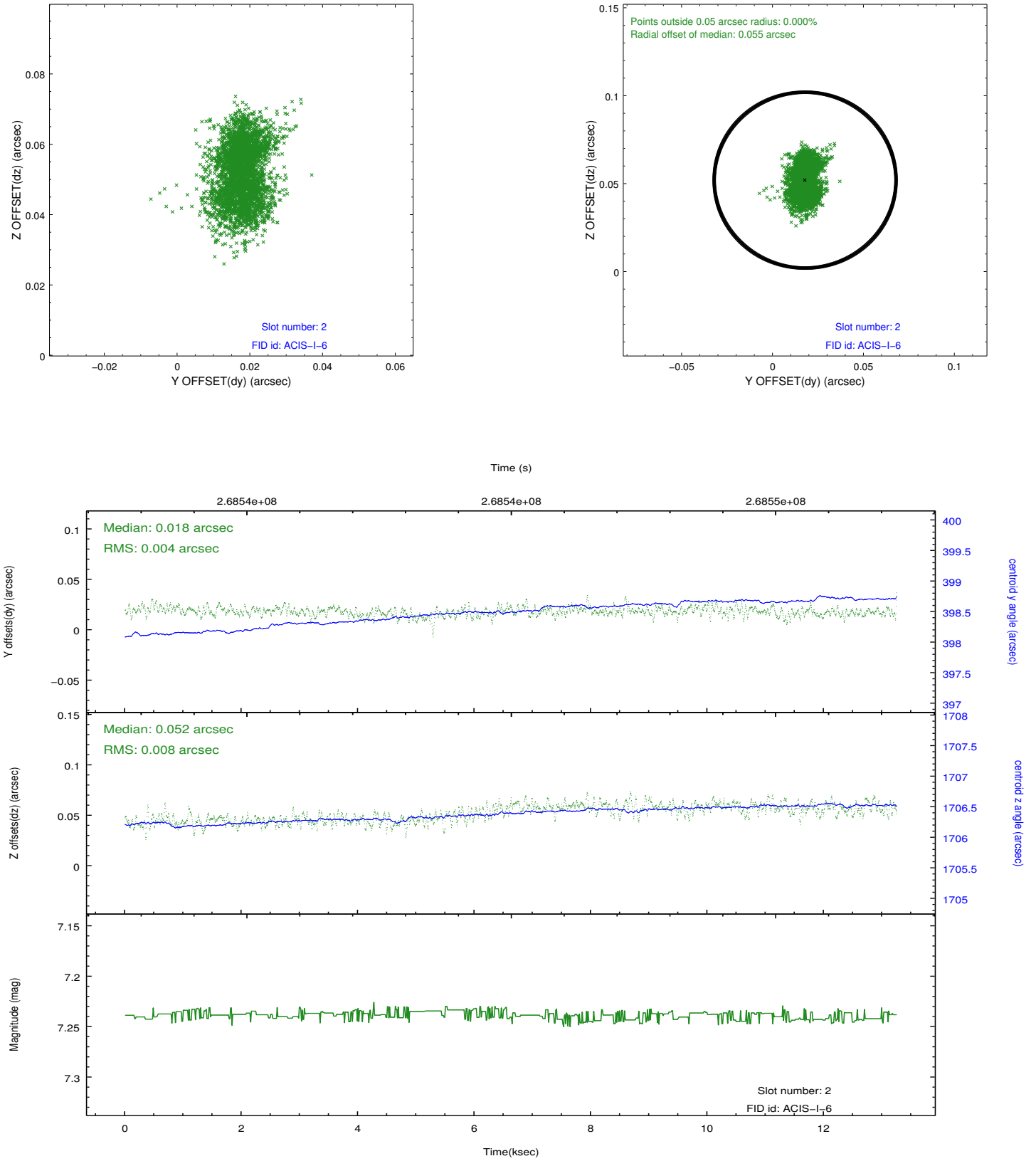
### 2.5.1 Slot 0



## 2.5.2 Slot 1



### 2.5.3 Slot 2



## **A Summary**

### **A.1 Status**

V&V Scientist	Jen Lauer
V&V Date (YYYY-MM-DD)	2012.04.05
V&V Edition	1
V&V Disposition and Status	OK
V&V Charge Time	12.7647999

### **A.2 Comments**