

V&V Reference Report

L2 ASCDS Version : 8.4.3.1

Observation 6922 - L2 Version 3
Chandra X-Ray Center

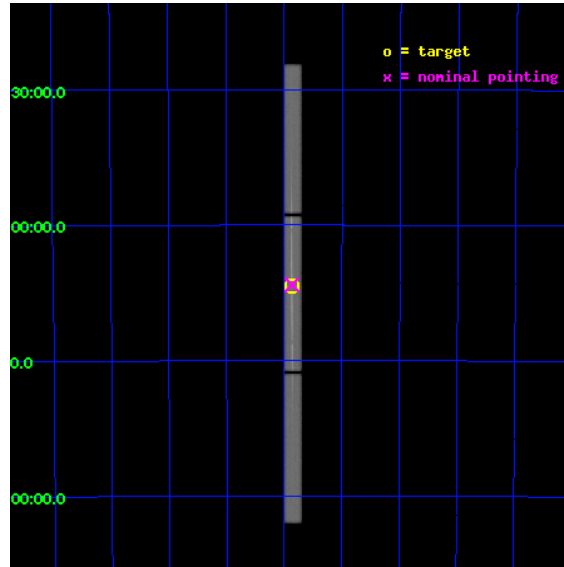
L2 Processing Date : Aug 11 2012

Contents

1	Front	2
2	OBI	3
2.1	OBI	3
2.1.1	Images	3
2.1.2	Parameters	4
2.1.3	Events	4
2.2	Compared Parameters	5
2.3	Aspect	6
2.4	Star Slots	9
2.4.1	Slot 3	9
2.4.2	Slot 4	10
2.4.3	Slot 5	11
2.4.4	Slot 6	12
2.4.5	Slot 7	13
2.5	FID Slots	14
2.5.1	Slot 0	14
2.5.2	Slot 1	15
2.5.3	Slot 2	16
3	Gratings	17
3.1	LETG Arm	17
A	Summary	19
A.1	Status	19
A.2	Comments	19

1 Front

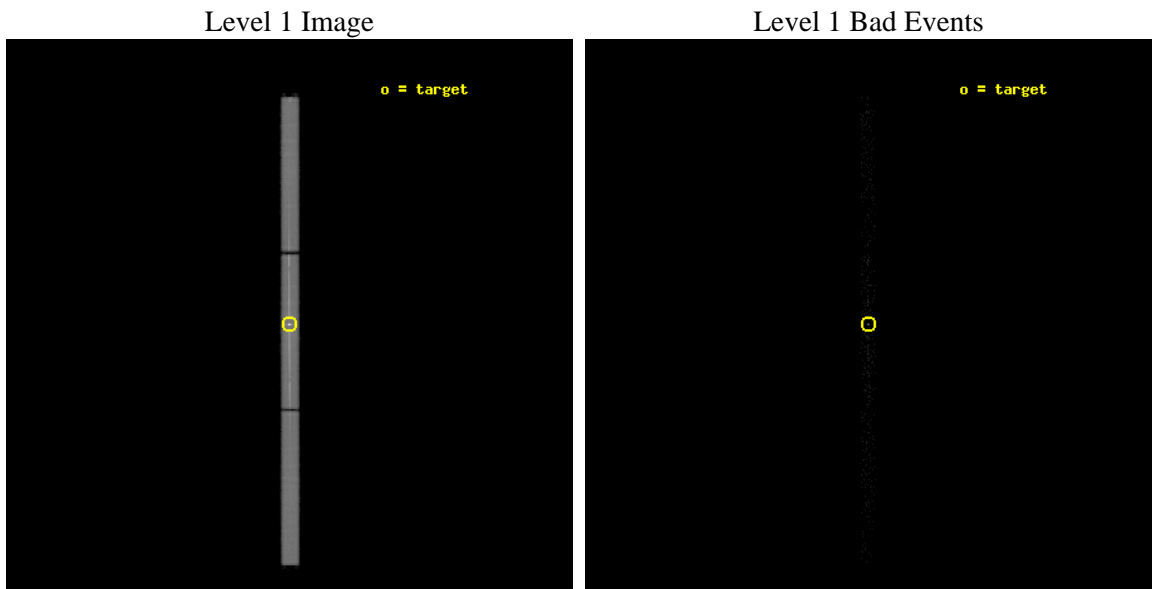
seq_num	790102	Sequence number
obs_id	6922	Observation id
title	AO7 Calibration Observations of 3C273	Proposal title
observer	Dr. CXC Calibration	Principal investigator
object	PKS2155-304	Source name
ra_targ	329.716667	Observer's specified target RA [deg]
dec_targ	-30.225556	Observer's specified target Dec [deg]
ra_nom	329.71690058548	Nominal RA [deg]
dec_nom	-30.220722946301	Nominal Dec [deg]
roll_nom	89.896033181546	Nominal Roll [deg]
revision	3	Processing version of data
ontime	10083.181722403	[s]
livetime	9984.865367887	Ontime multiplied by DTCOR
l2events	863242	Number of level 2 events



2 OBI

2.1 OBI

2.1.1 Images



2.1.2 Parameters

obi_num	0	Obi number	sched_exp_time	10000.000000	[s] Scheduled observation exposure time
ascdsver	8.4.5	Processing system revision	ontime	10083.181722403	[s]
caldsver	4.5.1.1	 	l1events	1114860	Number of level 1 events
date	2012-08-11T08:32:47	Date and time of file creation			
revision	3	Processing version of data			

2.1.3 Events

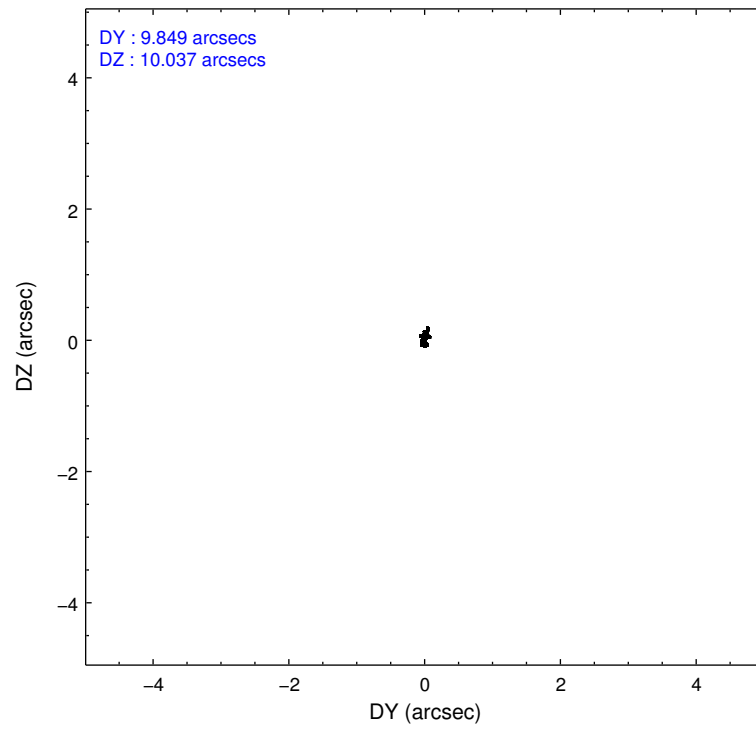
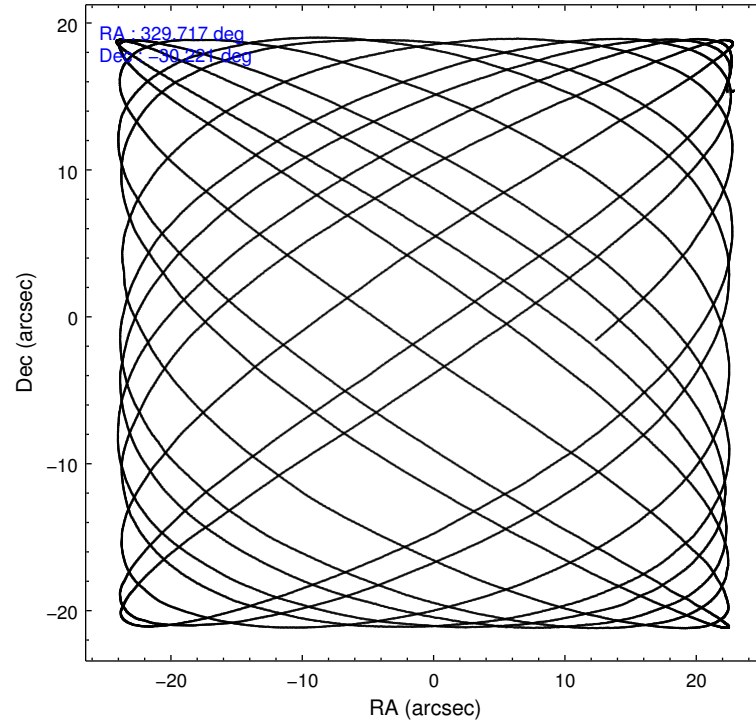
Level 1 Events

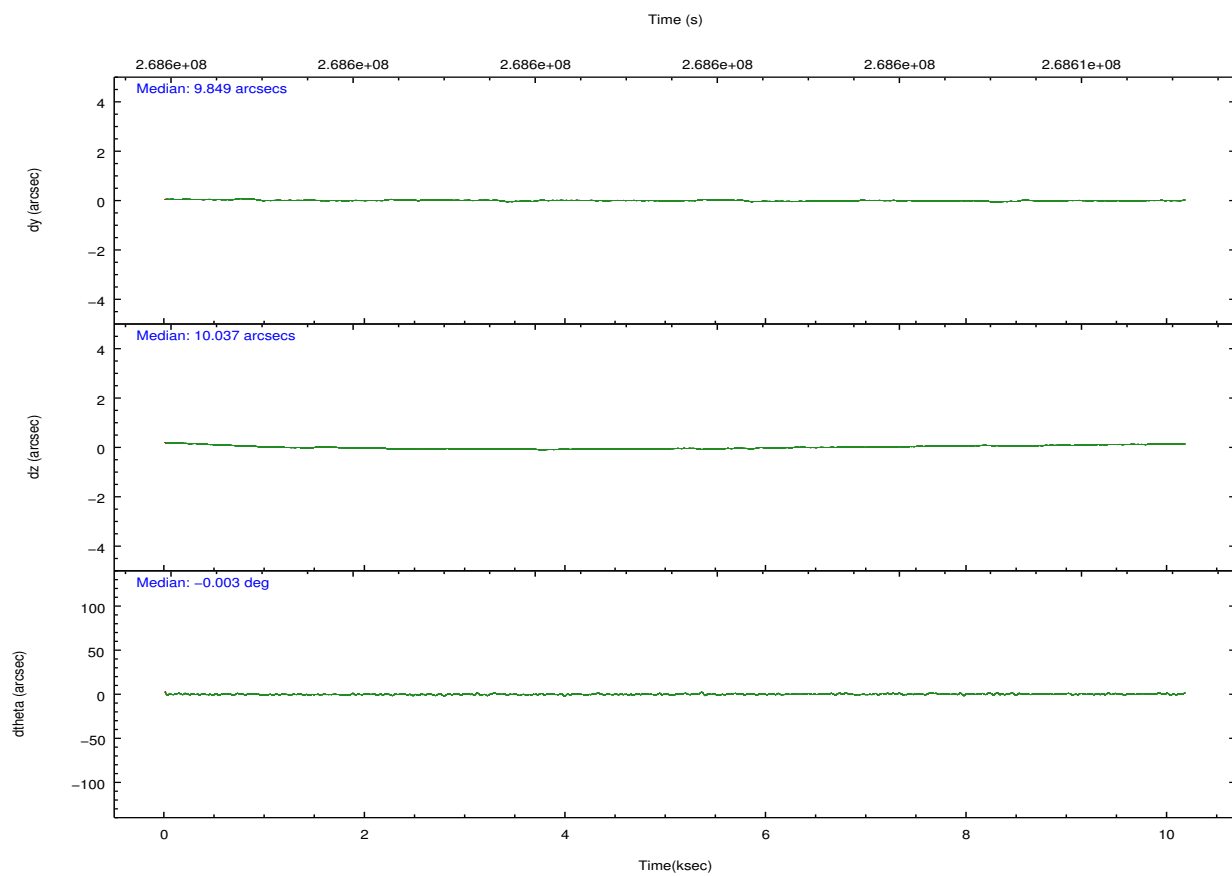
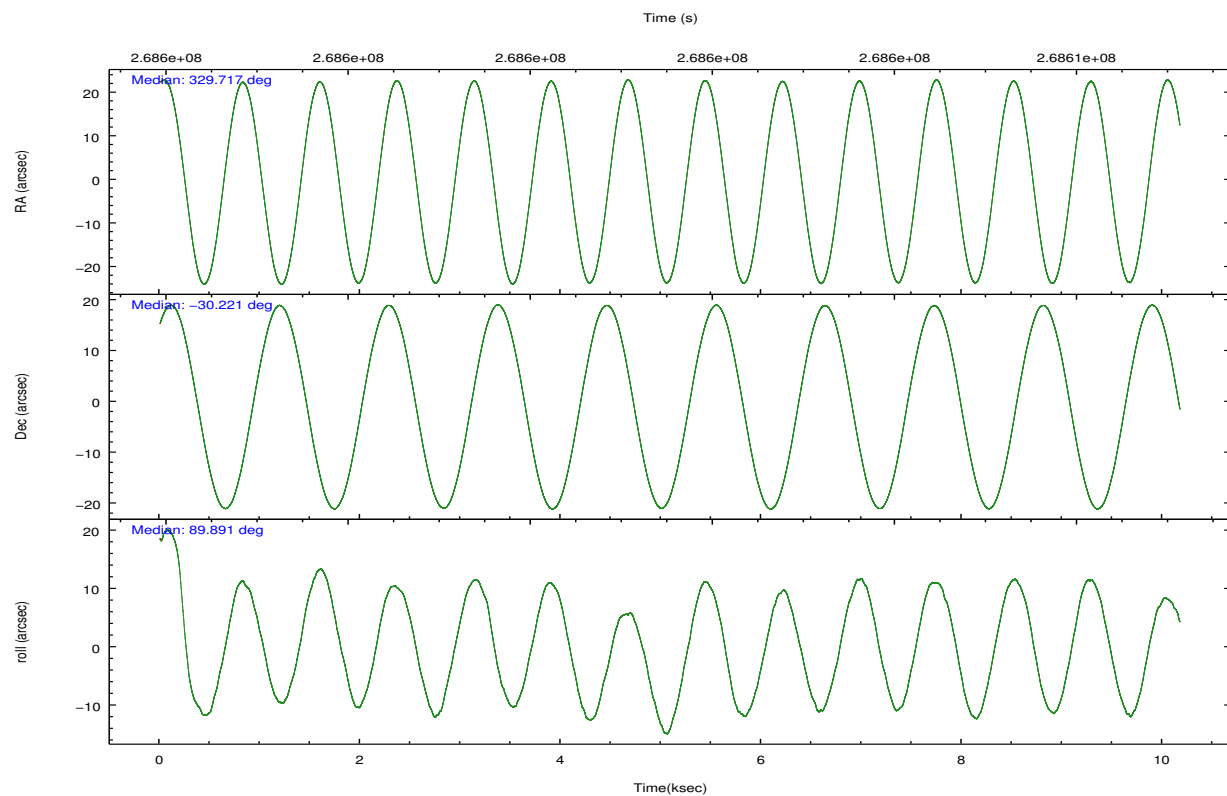
	segment 1	segment 2	segment 3
level 1 events	333833	440100	340927
rejected events	1430	1937	1526
rejected %	0%	0%	0%

2.2 Compared Parameters

Parameter	Planned	Actual	Parameter	Planned	Actual
Instrument	HRC	HRC	Obspar format version number	7	7
Detector	HRC-S	HRC-S	Obspar file type	PREDICTED	ACTUAL
Grating	LETG	LETG	Obspar update status	NONE	UPDATED
Data mode	OBSERVING	OBSERVING			
Observation mode	POINTING	POINTING			
[deg] Pointing RA	329.734729	329.7169005854768			
[deg] Pointing Dec	-30.244932	-30.22072294630138			
[deg] Pointing Roll	89.837668	89.89603318154593			
[mm] SIM focus pos	-1.429586	-1.428180813131781			
[mm] SIM defocus	0.1037507710433287	0.1051558262725154			
[mm] SIM translation stage pos	250.455976	250.466033080201			
[mm] SIM translation stage offset	0	-0.01005468664627074			
[s] Observation start time (MET)	268596632.184000	268596192.62983			
Observation start date	2006-07-06T18:09:27	2006-07-06T18:03:12			
[s] Observation end time (MET)	268606632.184000	268606875.18033			
Observation end date	2006-07-06T20:56:07	2006-07-06T21:01:15			

2.3 Aspect



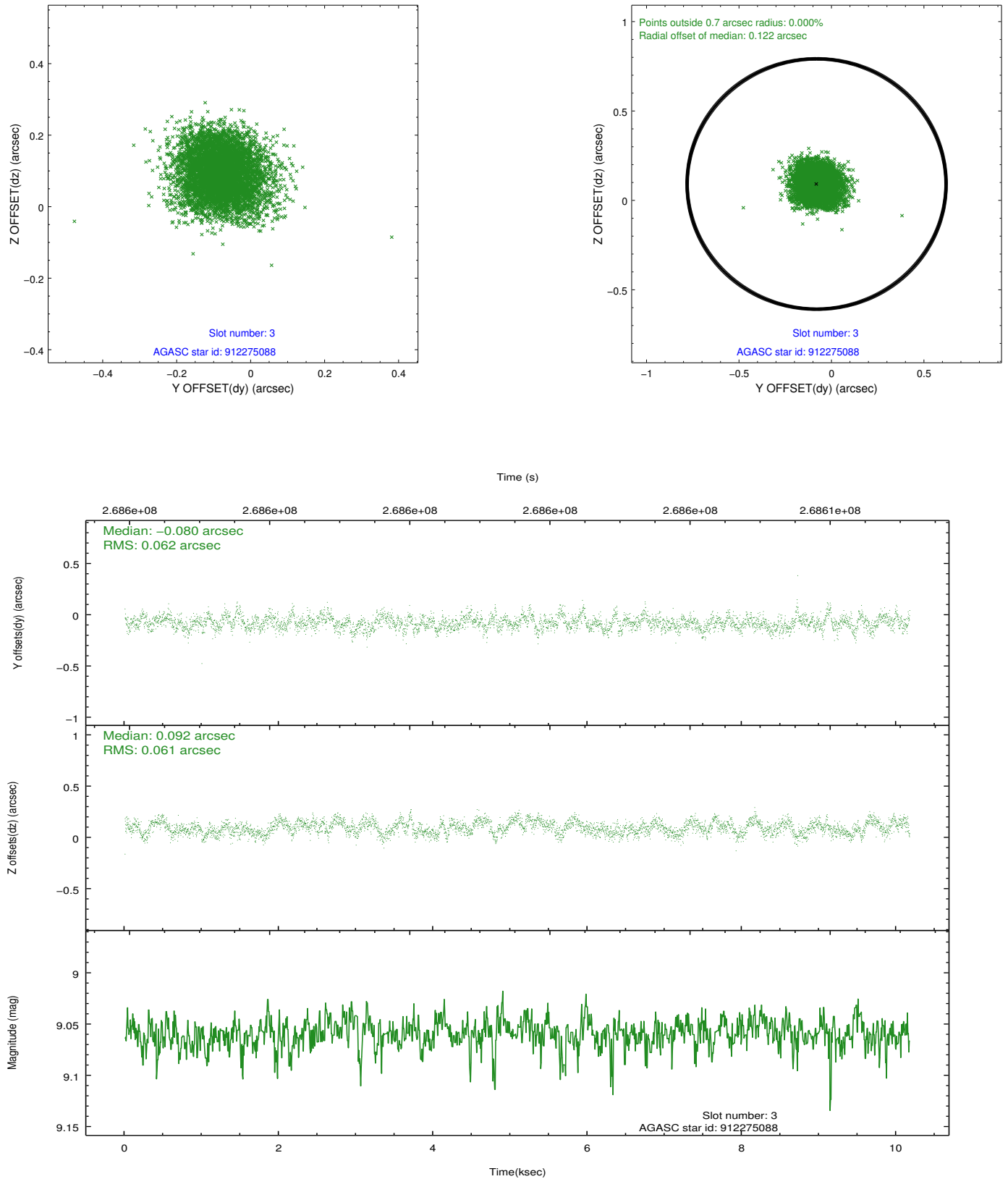


Slot Statistics

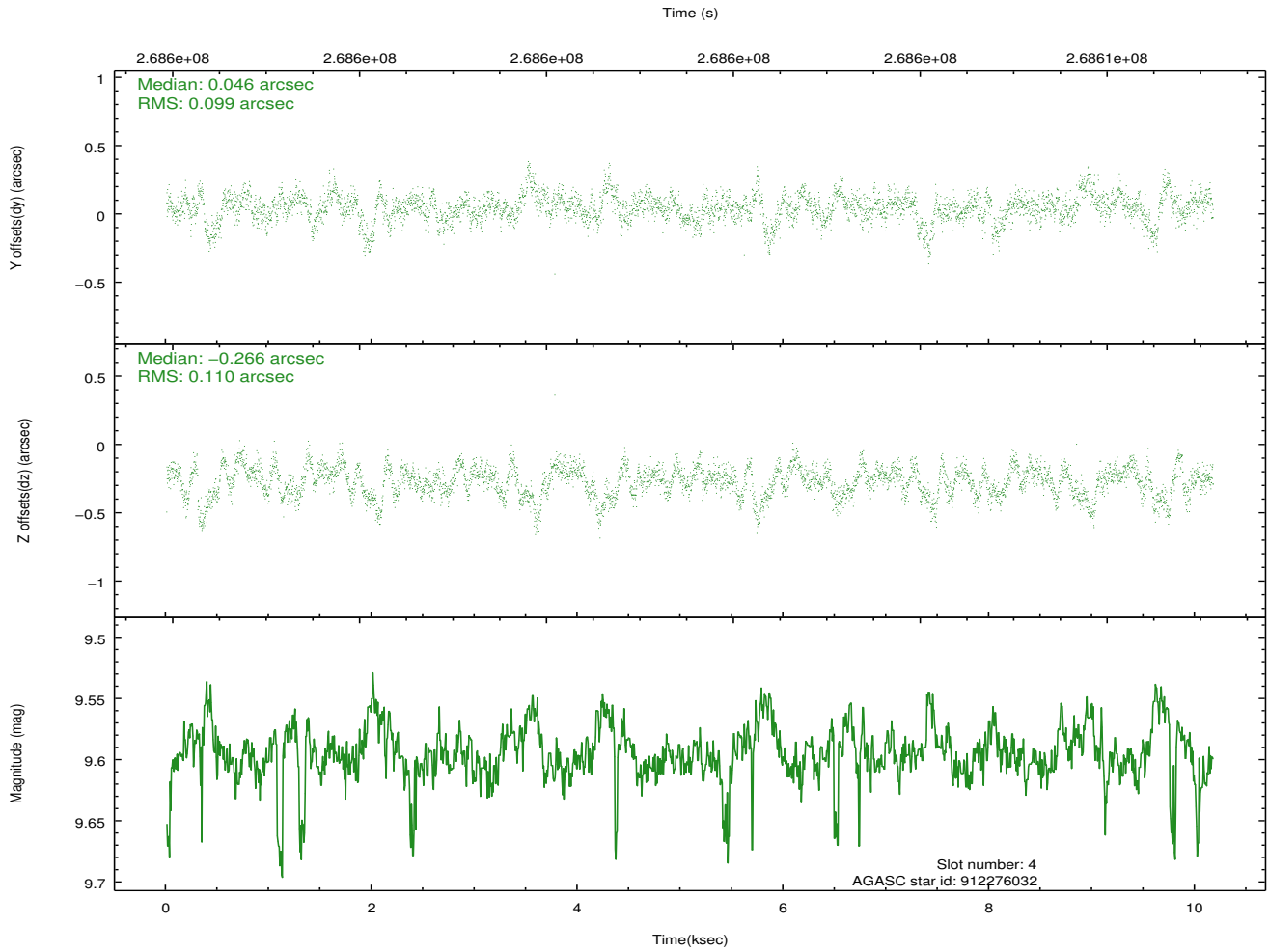
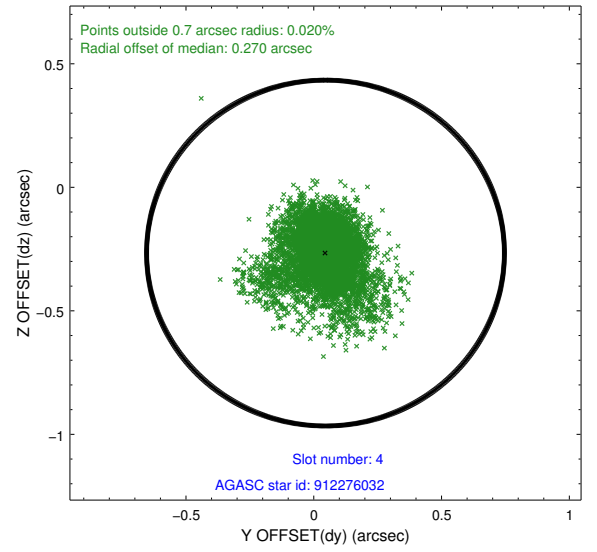
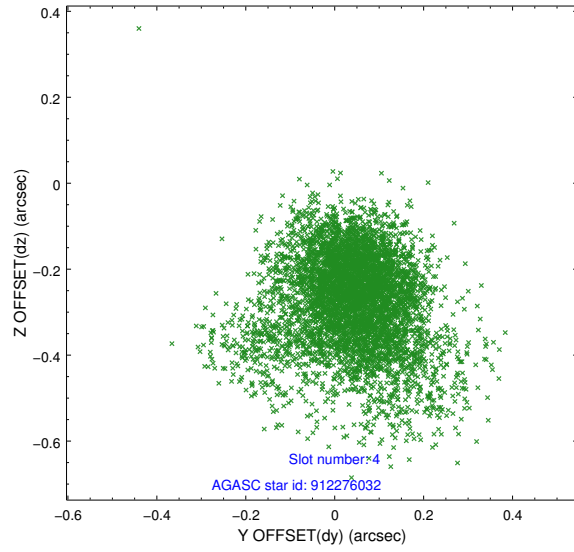
slot	status	id	mag	n_pts	med_dy	med_dz	dr1	dr2	ra	dec	mean_y	mean_z
0	FID	HRC-S-1	7.06	2481	0.138	-0.213	0.007	0.012	0.000000	0.000000	-1164.08	-458.78
1	FID	HRC-S-2	7.04	2481	0.155	-0.114	0.005	0.009	0.000000	0.000000	1235.15	-451.54
2	FID	HRC-S-3	7.06	2481	0.097	0.025	0.007	0.011	0.000000	0.000000	-1166.32	570.81
3	GUIDE	912275088	9.06	4946	-0.080	0.092	0.092	0.149	329.619228	-29.738698	1820.75	366.76
4	GUIDE	912276032	9.60	4935	0.046	-0.266	0.149	0.282	329.395967	-29.803466	1584.71	1062.99
5	GUIDE	981469488	9.60	4955	-0.093	0.126	0.128	0.215	329.261199	-30.045155	711.68	1478.37
6	GUIDE	981471664	6.35	4961	0.091	-0.137	0.080	0.126	328.981826	-30.605916	-1314.41	2329.17
7	GUIDE	981478152	9.40	4950	0.044	0.194	0.115	0.185	329.415589	-30.057192	670.97	997.31

2.4 Star Slots

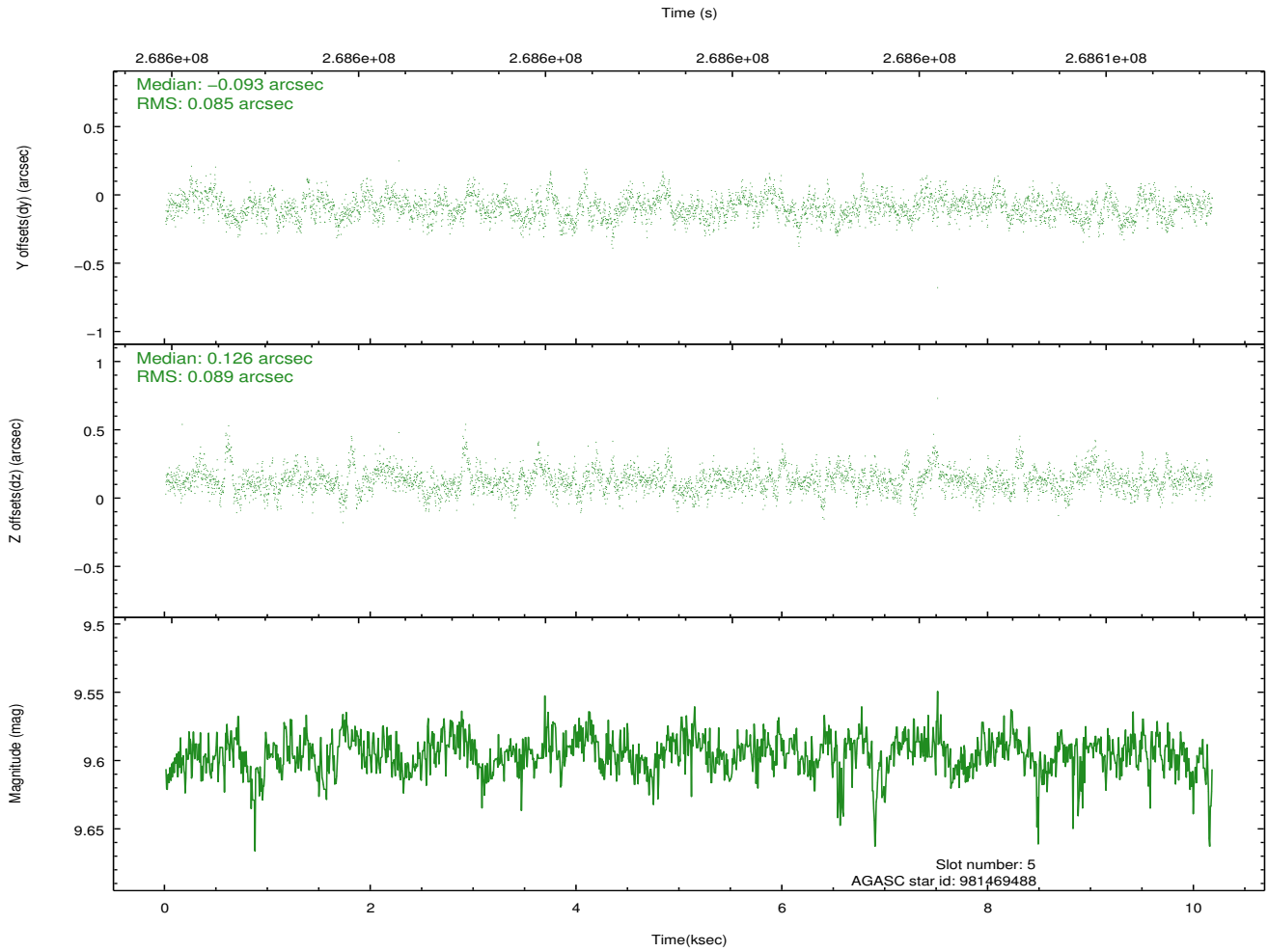
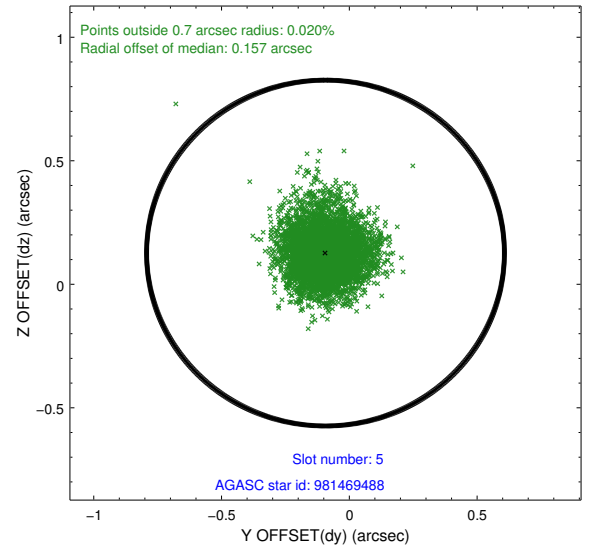
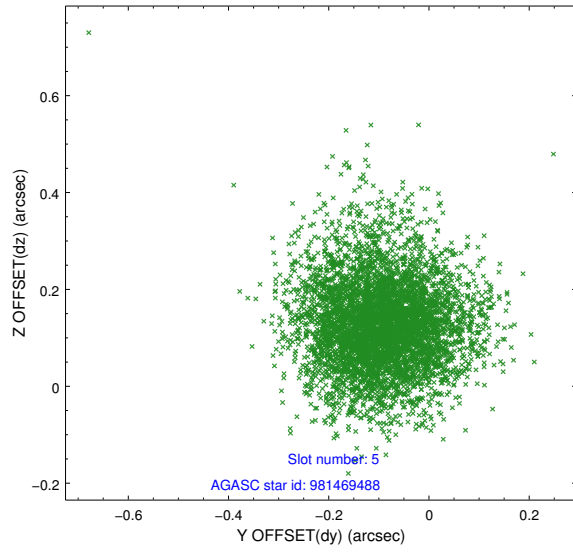
2.4.1 Slot 3



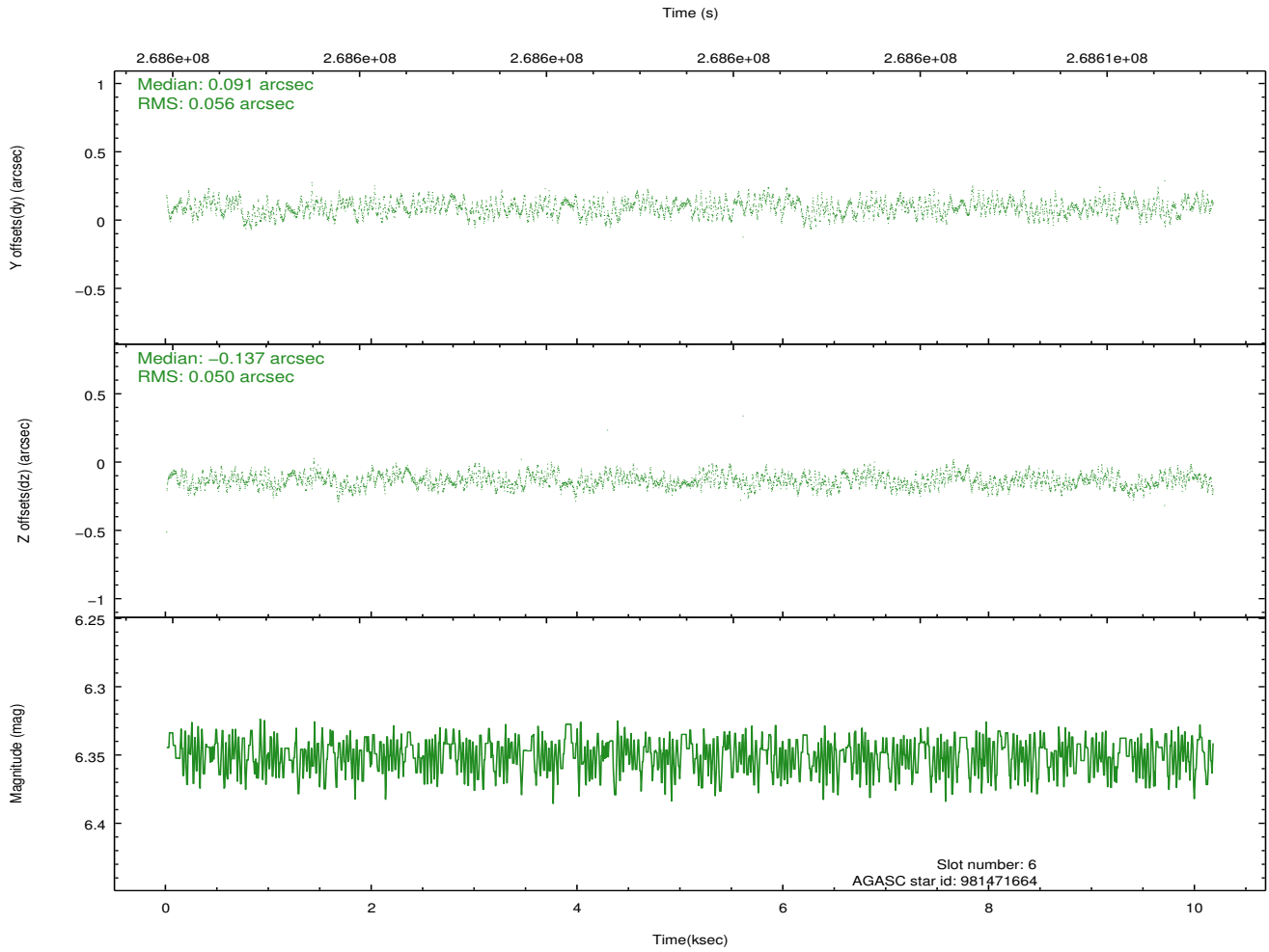
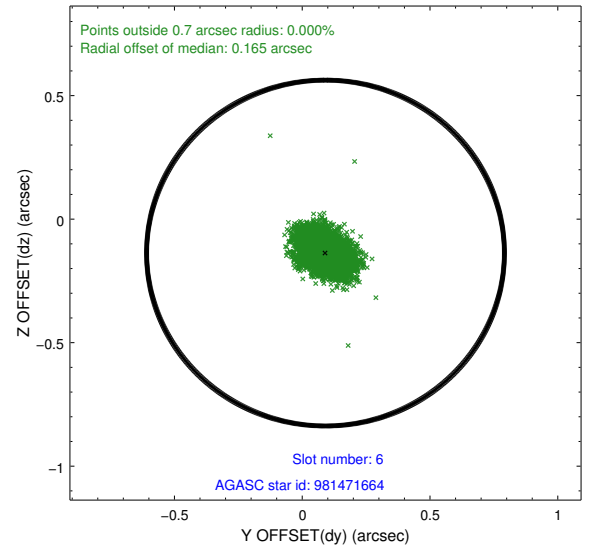
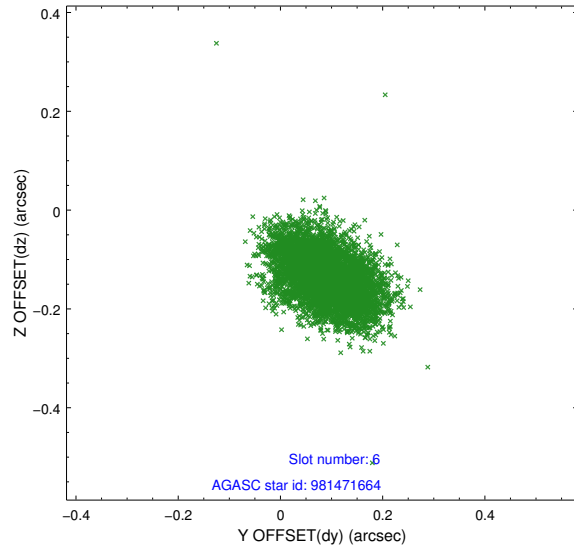
2.4.2 Slot 4



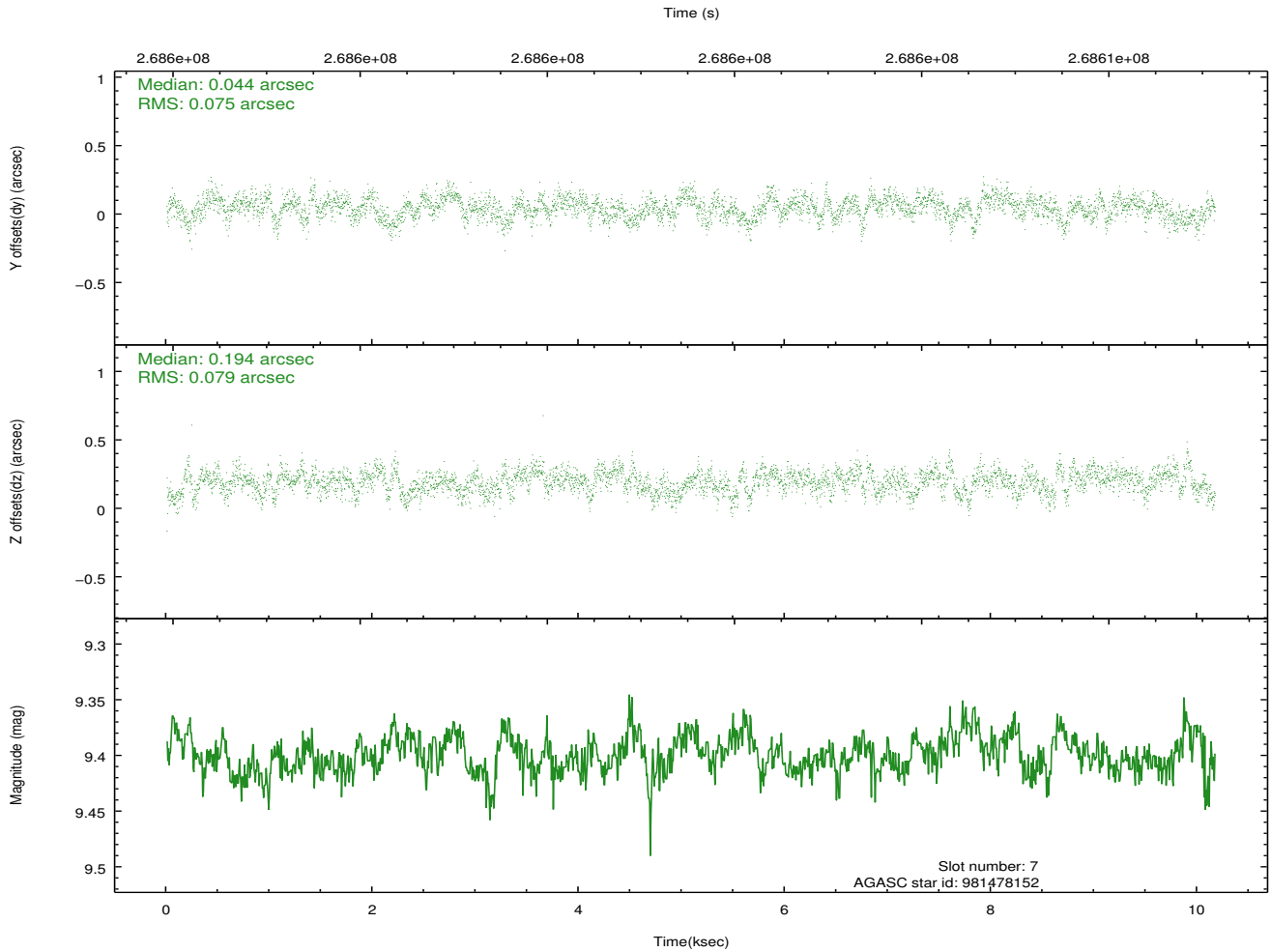
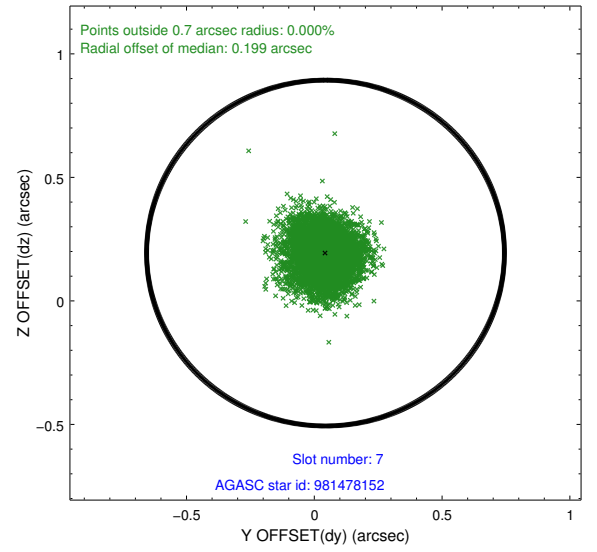
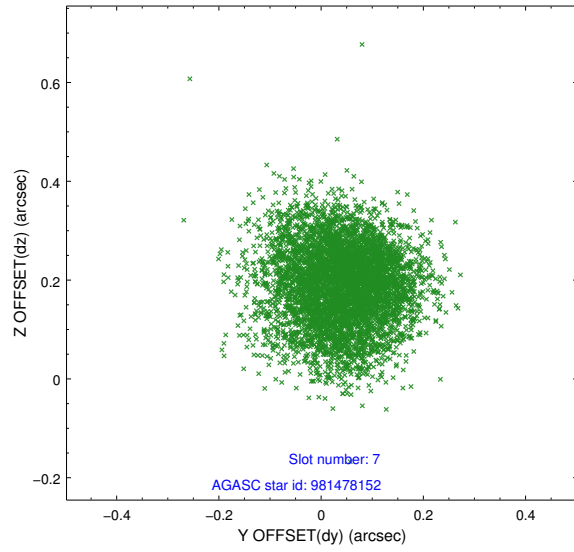
2.4.3 Slot 5



2.4.4 Slot 6

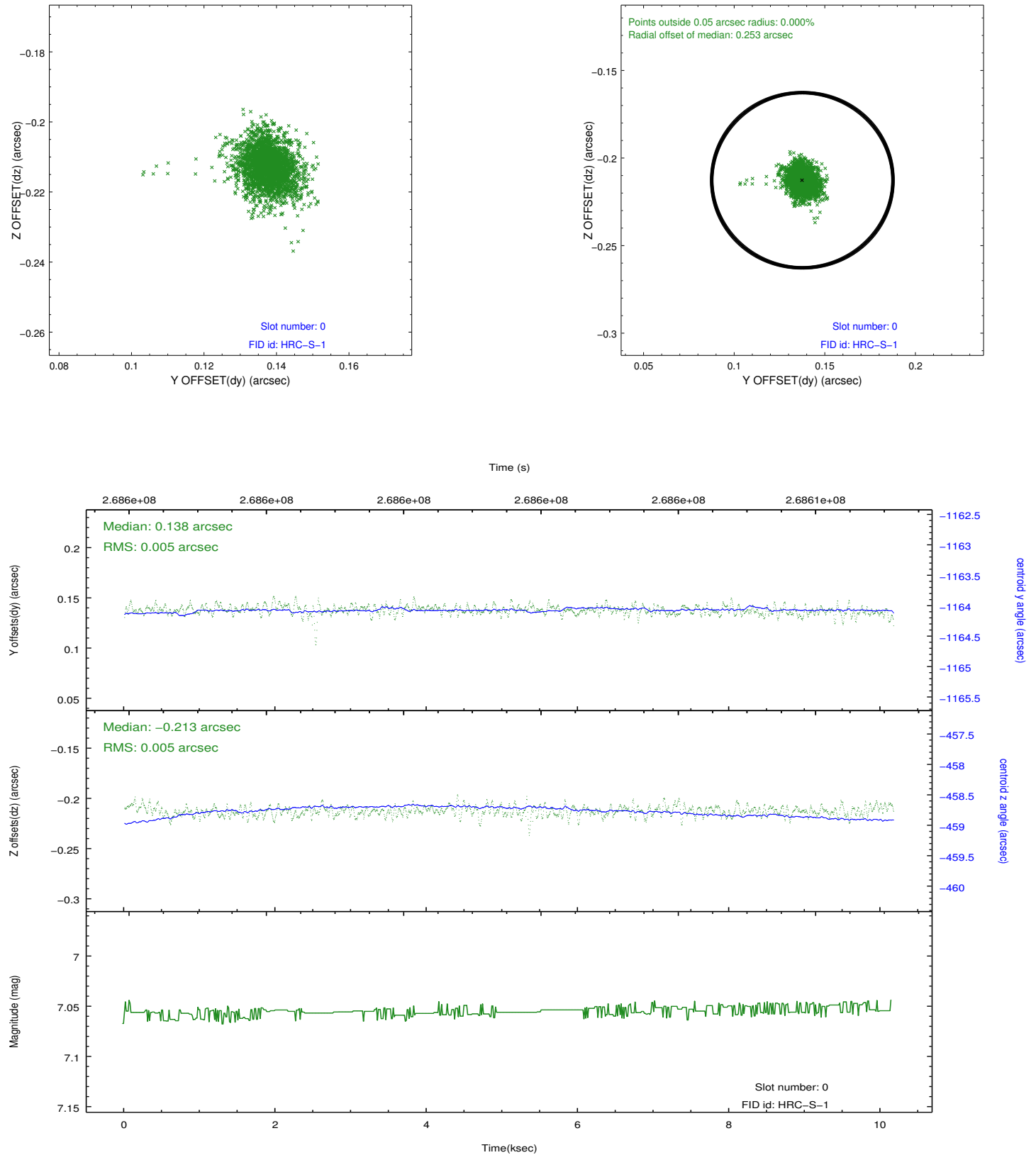


2.4.5 Slot 7

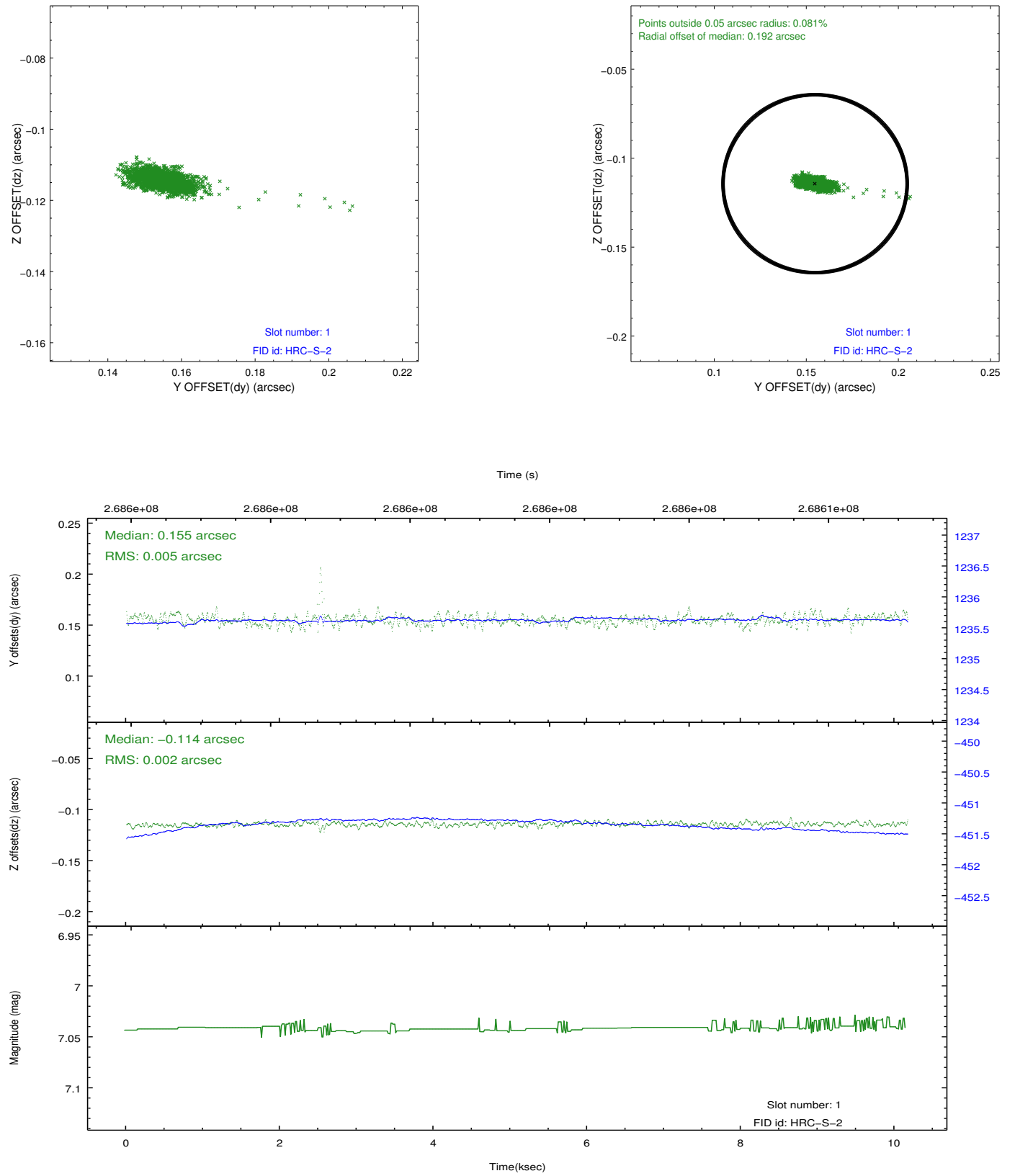


2.5 FID Slots

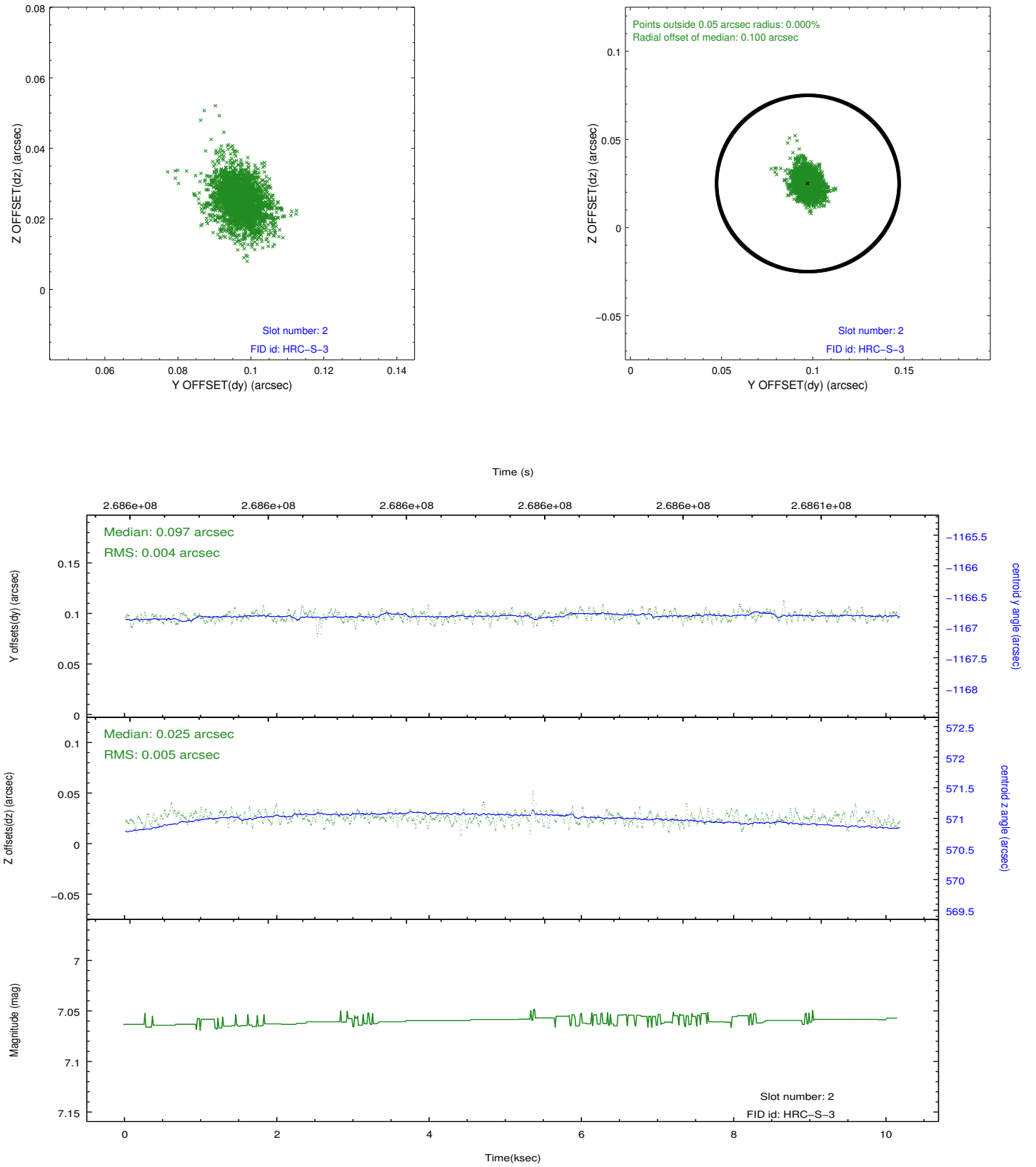
2.5.1 Slot 0



2.5.2 Slot 1

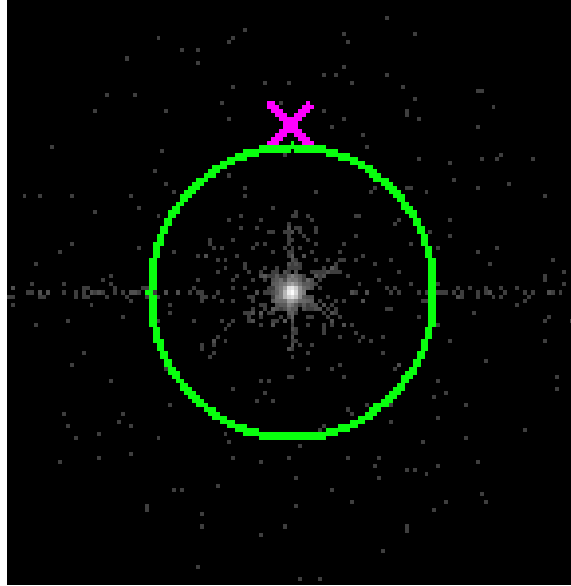


2.5.3 Slot 2

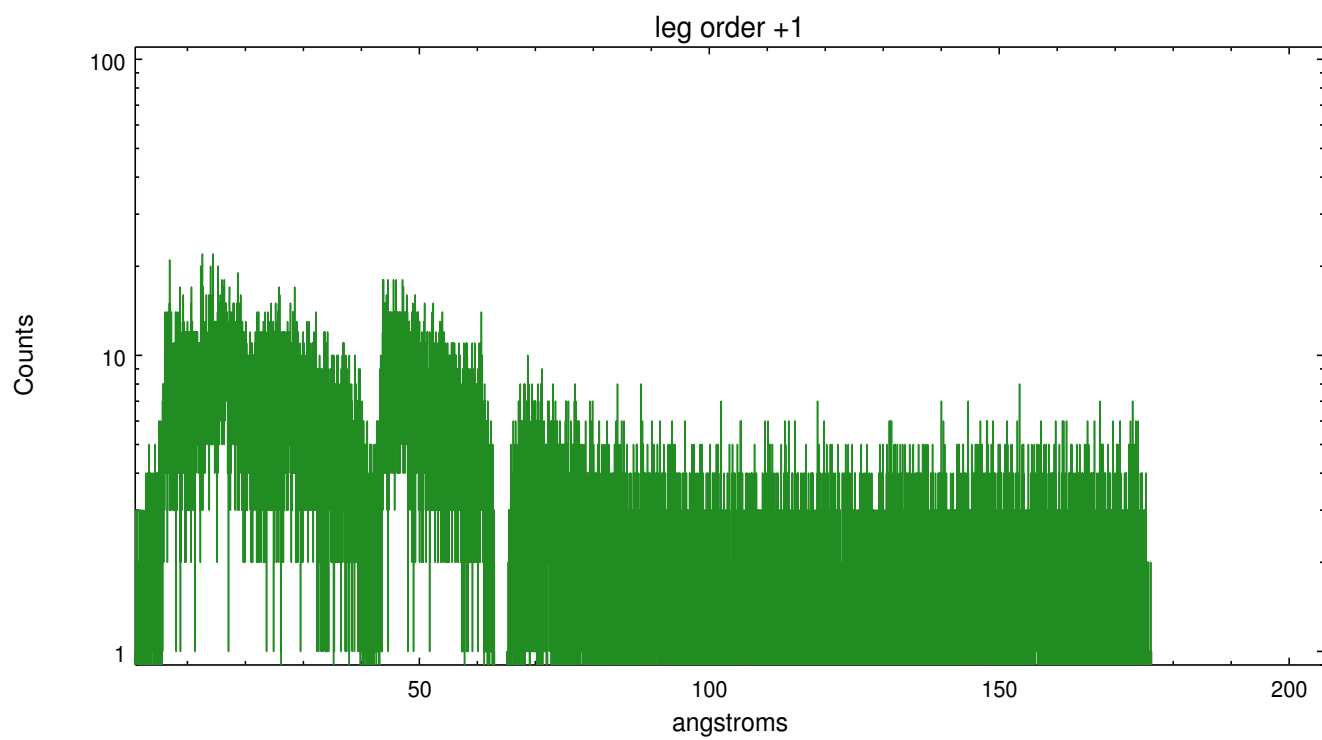
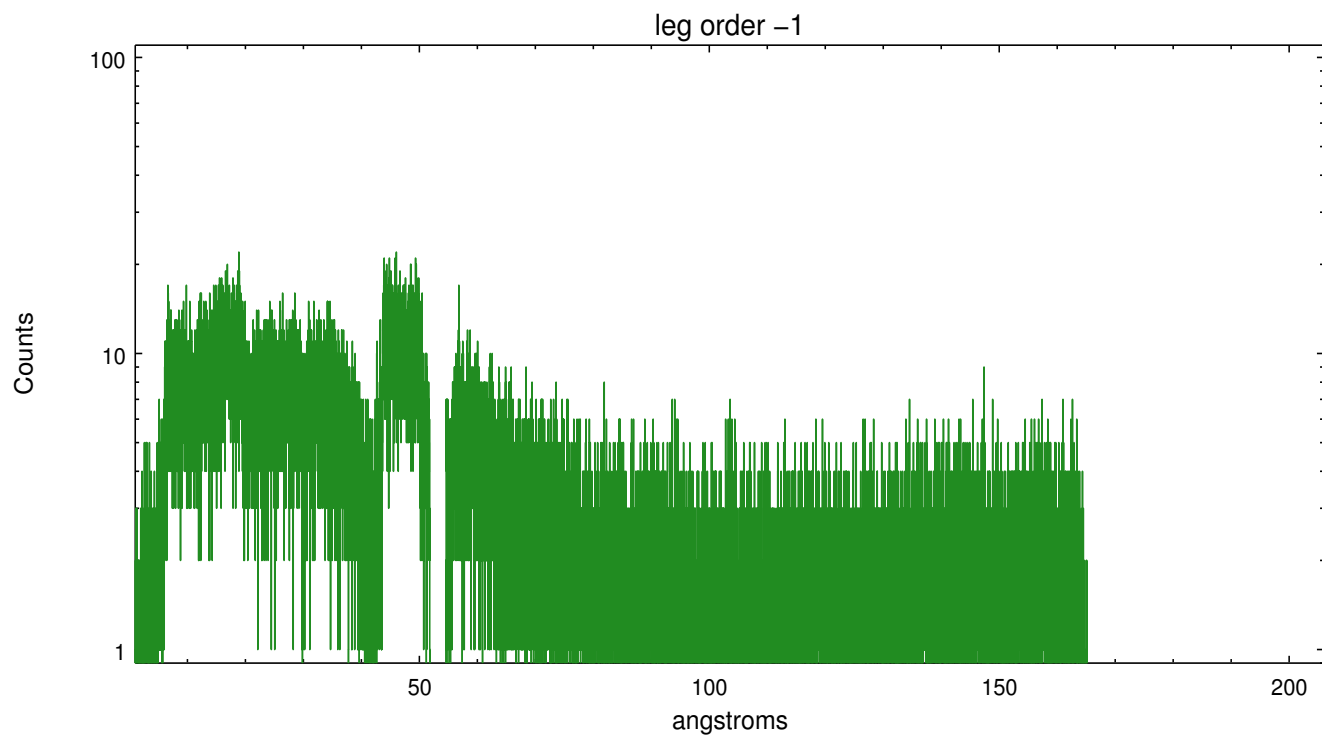


3 Gratings

3.1 LETG Arm



LETG Zero Order



A Summary

A.1 Status

V&V Scientist	Joy Nichols
V&V Date (YYYY-MM-DD)	2012.08.14
V&V Edition	1
V&V Disposition and Status	OK
V&V Charge Time	10.0831817

A.2 Comments