

V&V Reference Report

L2 ASCDS Version : 8.4.3

Observation 6772 - L2 Version 2
Chandra X-Ray Center

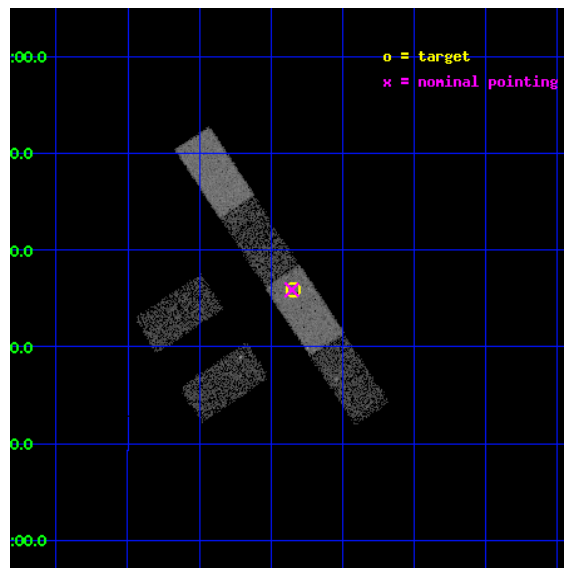
L2 Processing Date : Mar 18 2012

Contents

1	Front	2
2	OBI	3
2.1	OBI	3
2.1.1	Images	3
2.1.2	Bias	3
2.1.3	Parameters	4
2.1.4	Events	4
2.2	Compared Parameters	5
2.3	Aspect	6
2.4	Star Slots	9
2.4.1	Slot 3	9
2.4.2	Slot 4	10
2.4.3	Slot 5	11
2.4.4	Slot 6	12
2.5	FID Slots	13
2.5.1	Slot 0	13
2.5.2	Slot 1	14
2.5.3	Slot 2	15
A	Summary	16
A.1	Status	16
A.2	Comments	16

1 Front

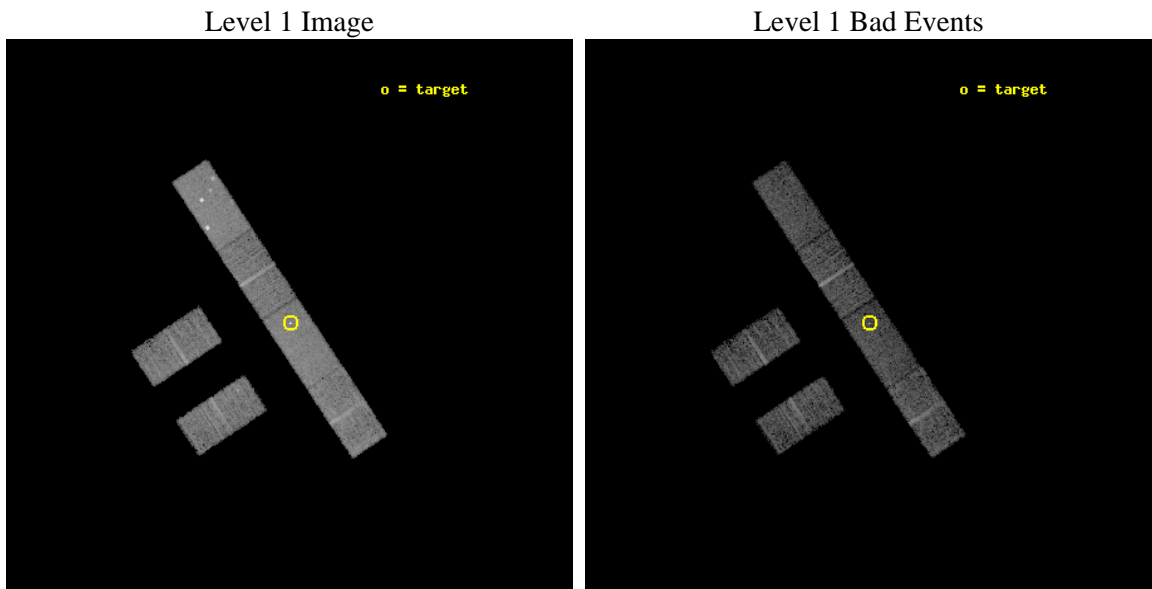
seq_num	701190	Sequence number
obs_id	6772	Observation id
title	Exploring the X-Ray Properties of Active Galactic Nuclei with Double-Peaked Balmer Lines	Proposal title
observer	Prof. Gordon Garmire	Principal investigator
object	SDSSJ1407+0235	Source name
dtcycle	0	
cycle	P	events from which exps? Prim/Second/Both
ra_targ	211.83625	Observer's specified target RA [deg]
dec_targ	2.598083	Observer's specified target Dec [deg]
ra_nom	211.83837919287	Nominal RA [deg]
dec_nom	2.5982552108273	Nominal Dec [deg]
roll_nom	56.490900891809	Nominal Roll [deg]
revision	2	Processing version of data
ontime	5596.2000370622	Sum of GTIs [s]
livetime	5471.4509552818	Livetime [s]
ontime2	5596.2000370622	Sum of GTIs [s]
ontime3	5596.2000370622	Sum of GTIs [s]
ontime5	5596.2000370622	Sum of GTIs [s]
ontime6	5596.2000370622	Sum of GTIs [s]
ontime7	5596.2000370622	Sum of GTIs [s]
ontime8	5596.2000370622	Sum of GTIs [s]
l2events	40410	Number of level 2 events



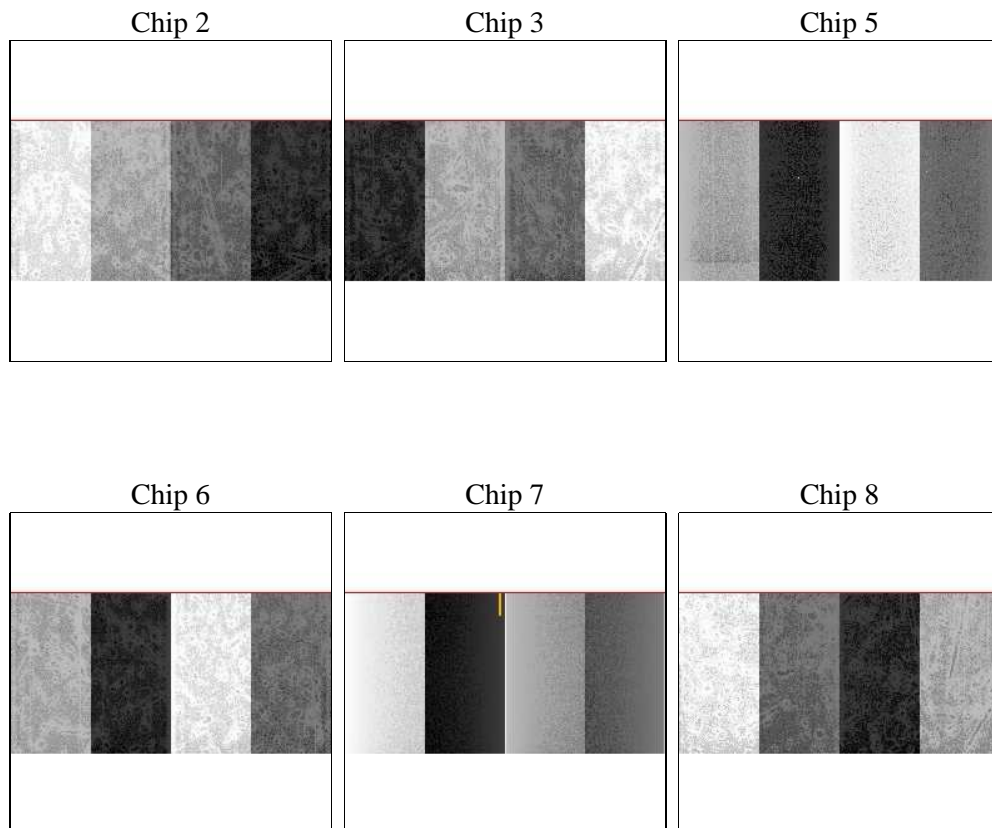
2 OBI

2.1 OBI

2.1.1 Images



2.1.2 Bias



2.1.3 Parameters

obi_num	0	Obi number	sched_exp_time	5500.000000	[s] Scheduled observation exposure time
ascdsver	8.4.3	Processing system revision	ontime	5596.2000370622	Sum of GTIs [s]
caldsver	4.4.8	 	ontime2	5596.2000370622	Sum of GTIs [s]
date	2012-03-18T09:14:51	Date and time of file creation	ontime3	5596.2000370622	Sum of GTIs [s]
revision	2	Processing version of data	ontime5	5596.2000370622	Sum of GTIs [s]
			ontime6	5596.2000370622	Sum of GTIs [s]
			ontime7	5596.2000370622	Sum of GTIs [s]
			ontime8	5596.2000370622	Sum of GTIs [s]
			l1events	178307	Number of level 1 events

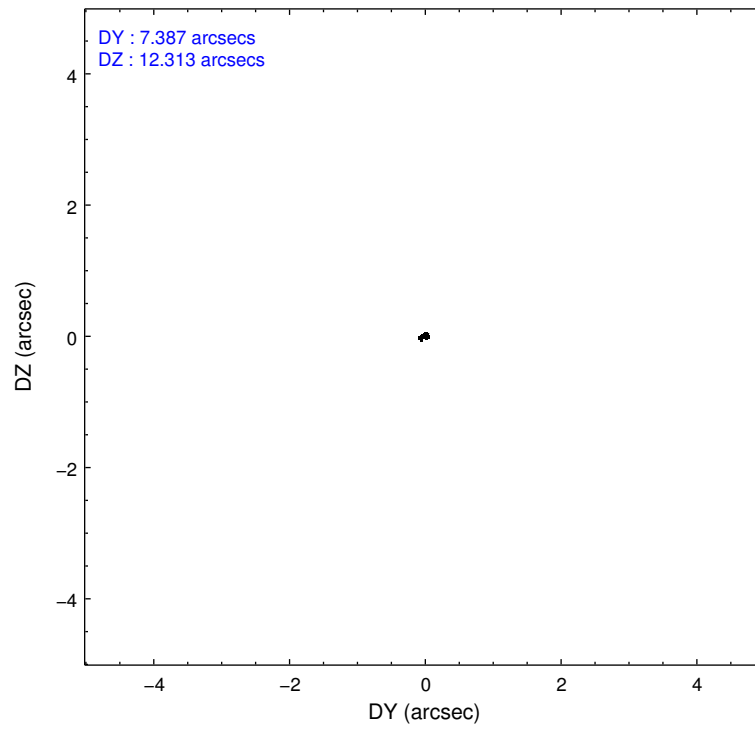
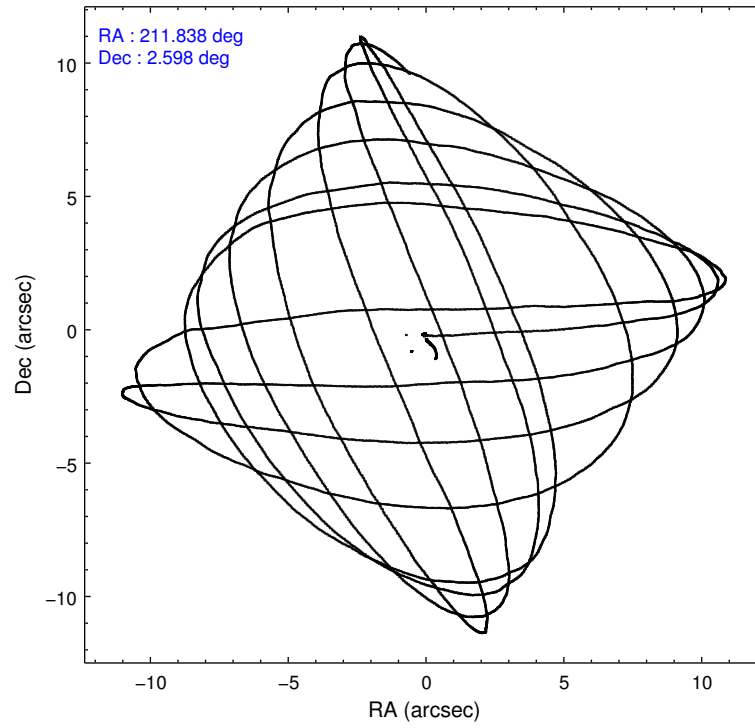
2.1.4 Events

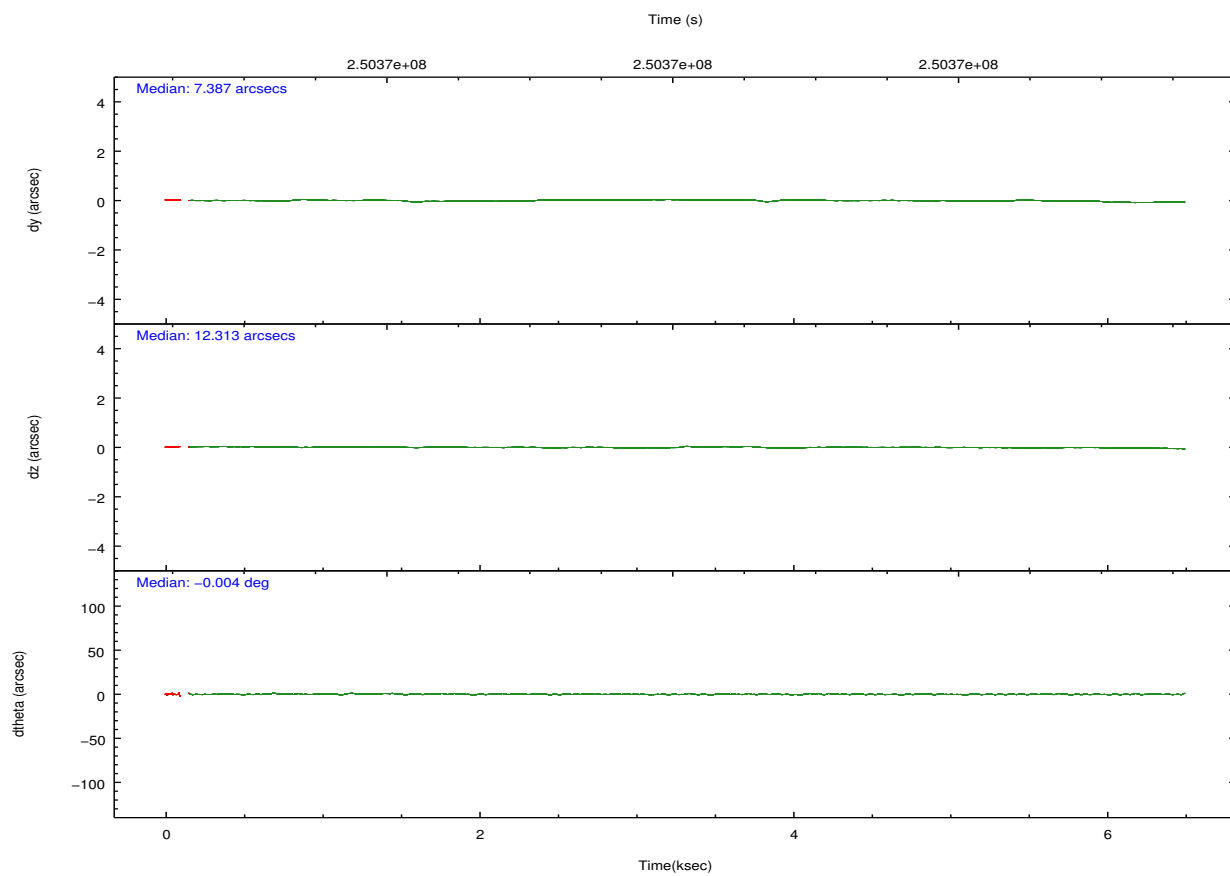
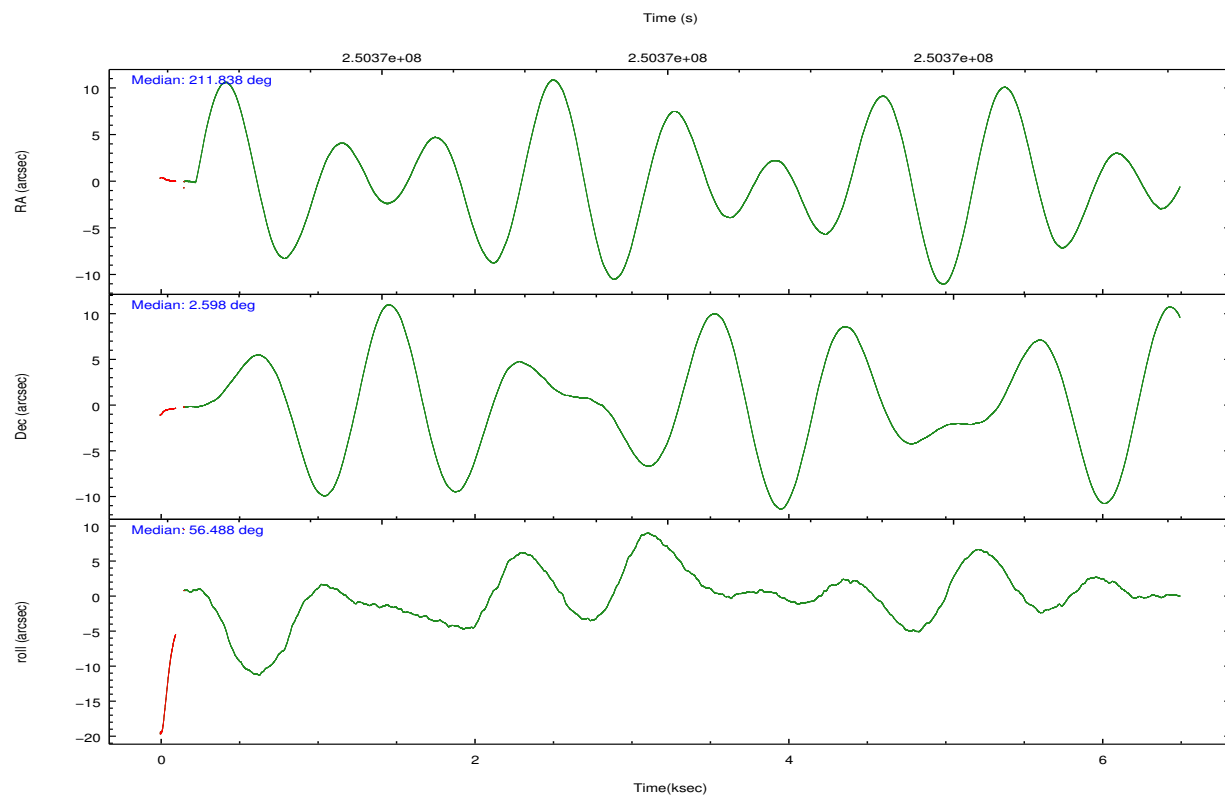
	ccd 2	ccd 3	ccd 5	ccd 6	ccd 7	ccd 8		ccd 2	ccd 3	ccd 5	ccd 6	ccd 7	ccd 8
level 1 events	24396	24103	40546	25064	33860	30338	grade 0 events	1246	1230	6759	1172	1814	1993
rejected events	21469	21252	18858	22059	18770	23954		5%	5%	16%	4%	5%	6%
rejected %	88%	88%	46%	88%	55%	78%	grade 1 events	15	12	48	10	62	12
								0%	0%	0%	0%	0%	0%
							grade 2 events	601	540	5110	597	3220	1342
								2%	2%	12%	2%	9%	4%
							grade 3 events	323	338	782	312	1489	749
								1%	1%	1%	1%	4%	2%
							grade 4 events	326	323	769	319	1389	651
								1%	1%	1%	1%	4%	2%
							grade 5 events	948	1086	2773	1114	3122	1381
								3%	4%	6%	4%	9%	4%
							grade 6 events	432	420	8275	605	7183	1649
								1%	1%	20%	2%	21%	5%
							grade 7 events	20505	20154	16030	20935	15581	22561
								84%	83%	39%	83%	46%	74%

2.2 Compared Parameters

Parameter	Planned	Actual	Parameter	Planned	Actual
Instrument	ACIS	ACIS	Obspar format version number	7	7
Detector	ACIS-235678	ACIS-235678	Obspar file type	PREDICTED	ACTUAL
Grating	NONE	NONE	Obspar update status	NONE	UPDATED
Data mode	FAINT	FAINT	Number of optional ACIS chips dropped	0	0
Observation mode	POINTING	POINTING	On-chip summing requested	N	N
[deg] Pointing RA	211.837037	211.8383791928683	Subarray requested	CUSTOM	1/2
[deg] Pointing Dec	2.570997	2.598255210827309	Subarray start row	257	257
[deg] Pointing Roll	56.334371	56.49090089180917	Subarray row count	512	512
[mm] SIM focus pos	-0.684267	-0.6828225247311905	Alternating exposures requested	N	N
[mm] SIM defocus	0	0.001444936568705701	[s] Primary exposure time	0.000000	1.8
[mm] SIM translation stage pos	-190.132523	-190.1425803651734			
[mm] SIM translation stage offset	0	0.01005778216563158			
[s] Observation start time (MET)	250367759.184000	250366546.79403			
Observation start date	2005-12-07T18:34:55	2005-12-07T18:15:46			
[s] Observation end time (MET)	250373259.184000	250374283.49438			
Observation end date	2005-12-07T20:06:35	2005-12-07T20:24:43			
Read mode	TIMED	TIMED			

2.3 Aspect



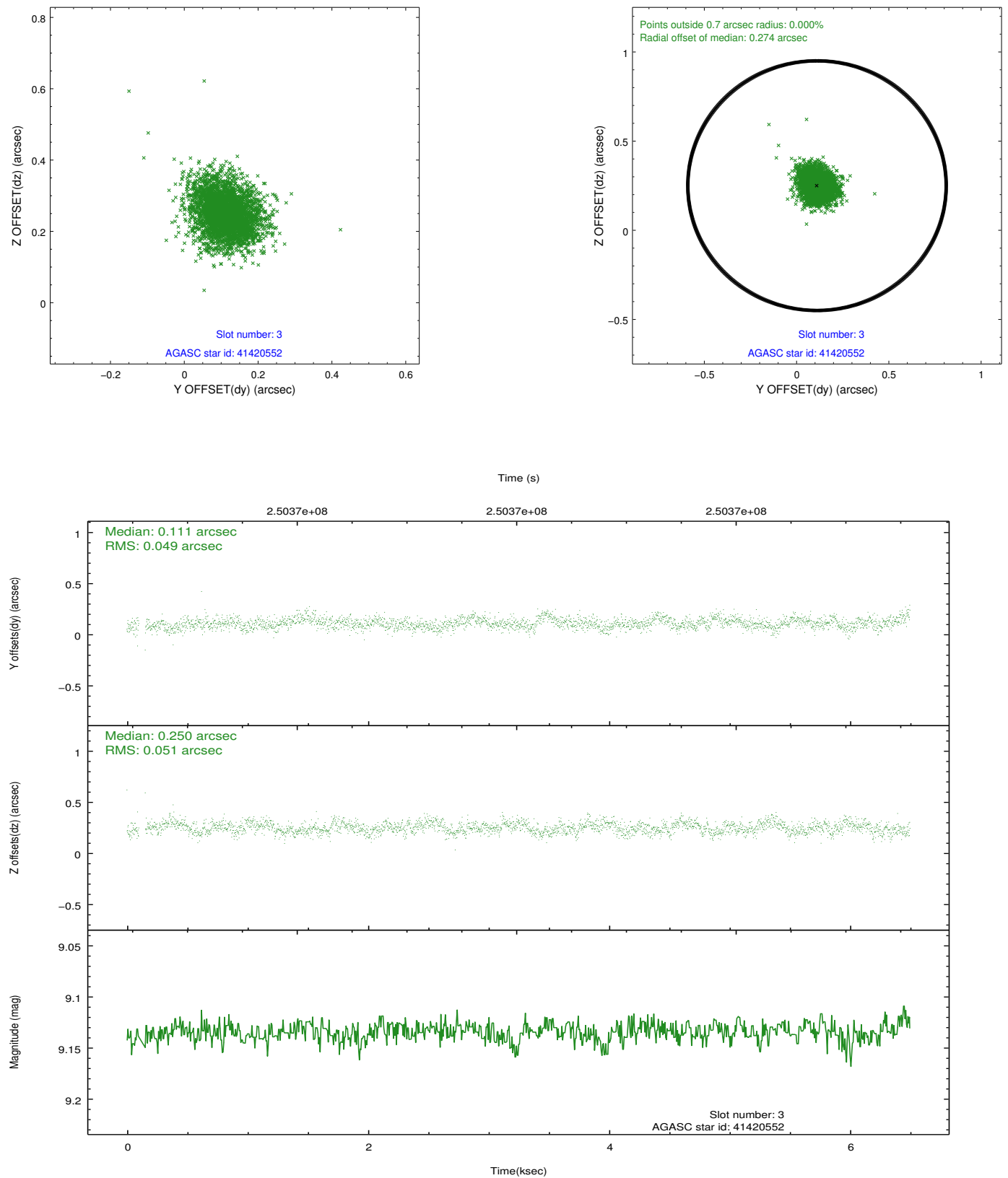


Slot Statistics

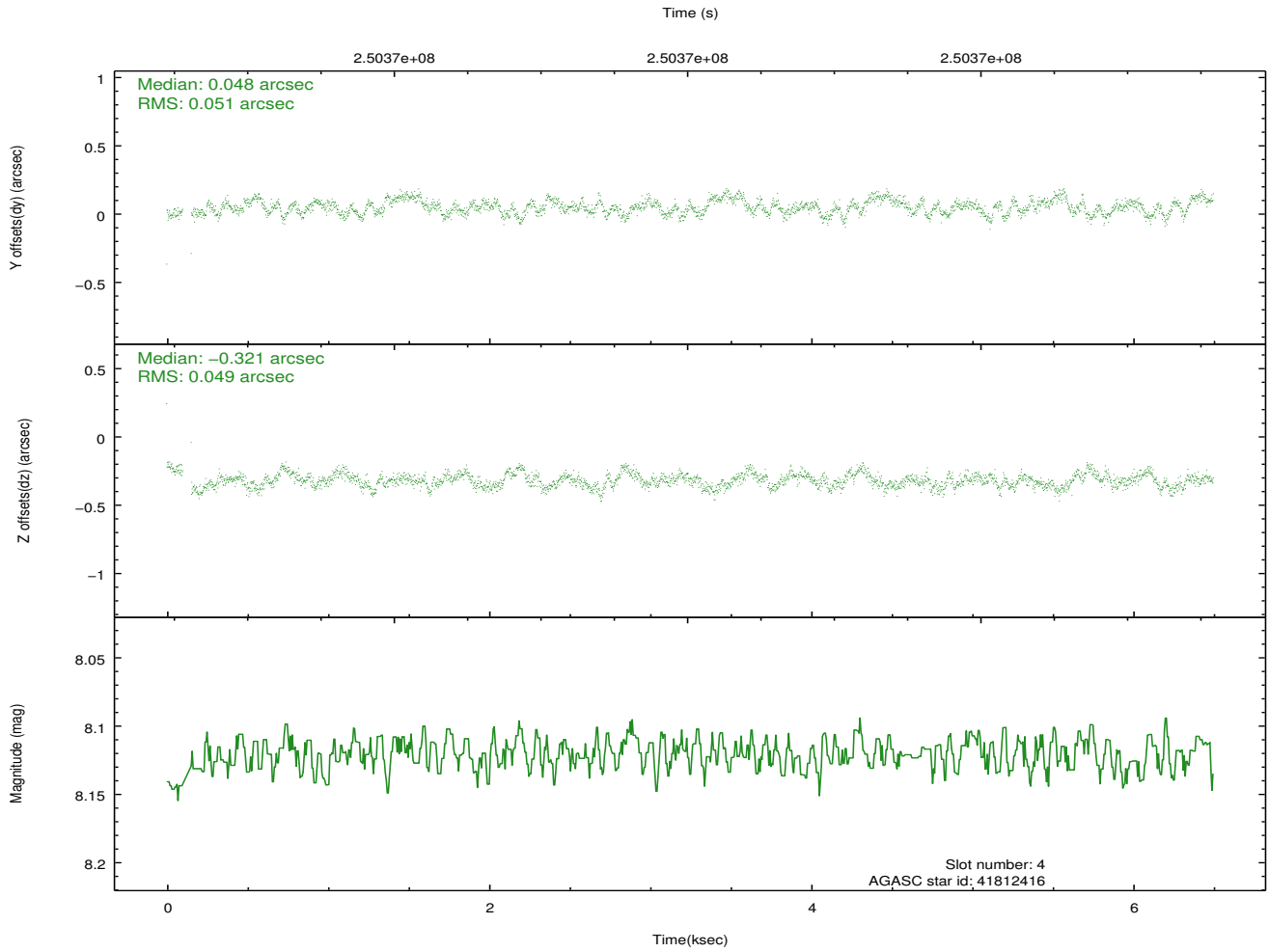
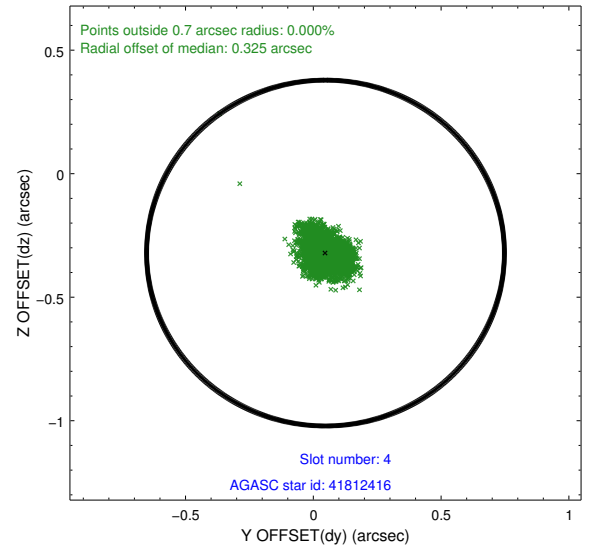
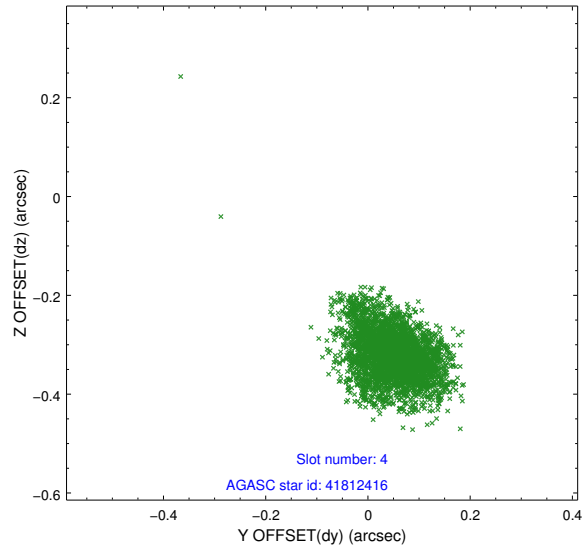
	status	id	mag	n_pts	med_dy	med_dz	drl
	FID	ACIS-S-2	7.10	1574	-0.020	-0.040	0.007
	FID	ACIS-S-4	7.20	1574	0.082	0.020	0.007
	FID	ACIS-S-5	7.23	1573	-0.093	0.028	0.007
	GUIDE	41420552	9.13	3145	0.111	0.250	0.074
	GUIDE	41812416	8.12	3144	0.048	-0.321	0.075
	GUIDE	41812816	9.91	3141	-0.059	0.289	0.138
	GUIDE	41815288	9.21	3143	-0.093	-0.218	0.094
0.0000.0000.0000.0000000.00000000.000.00							

2.4 Star Slots

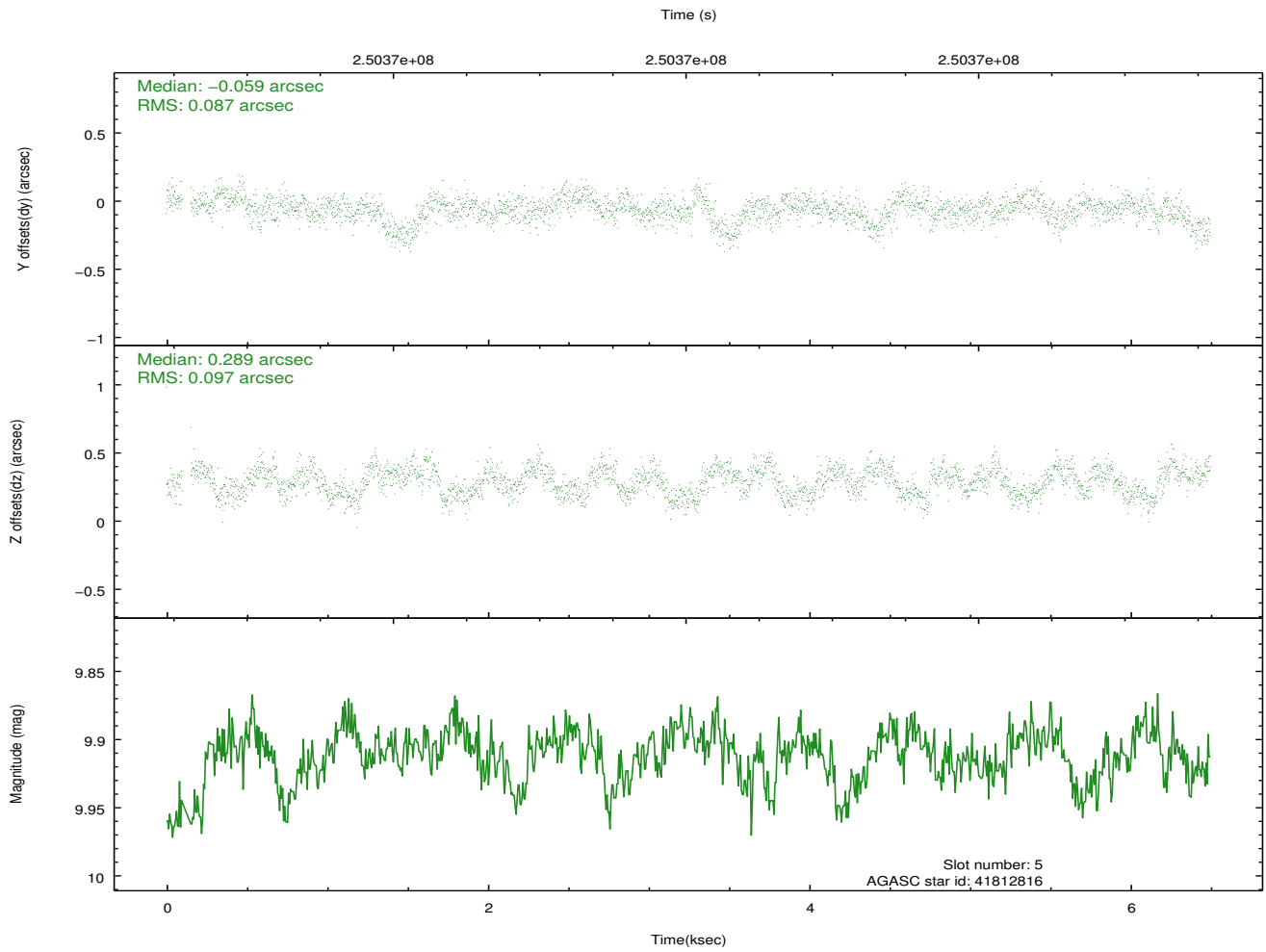
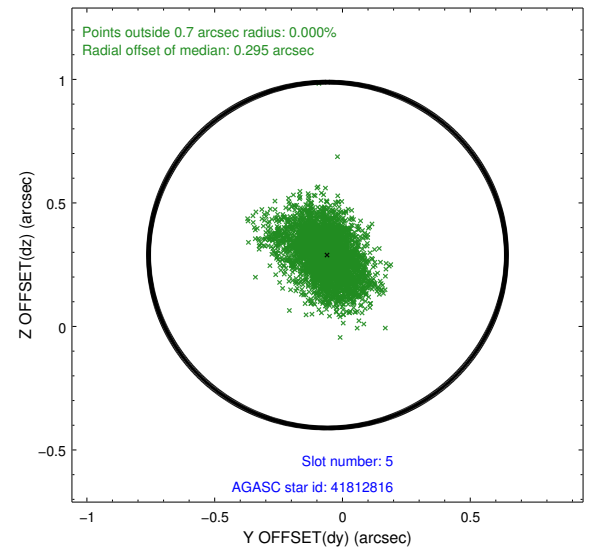
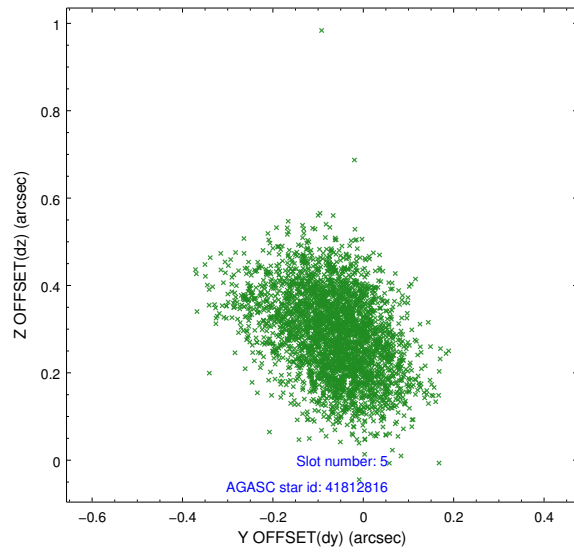
2.4.1 Slot 3



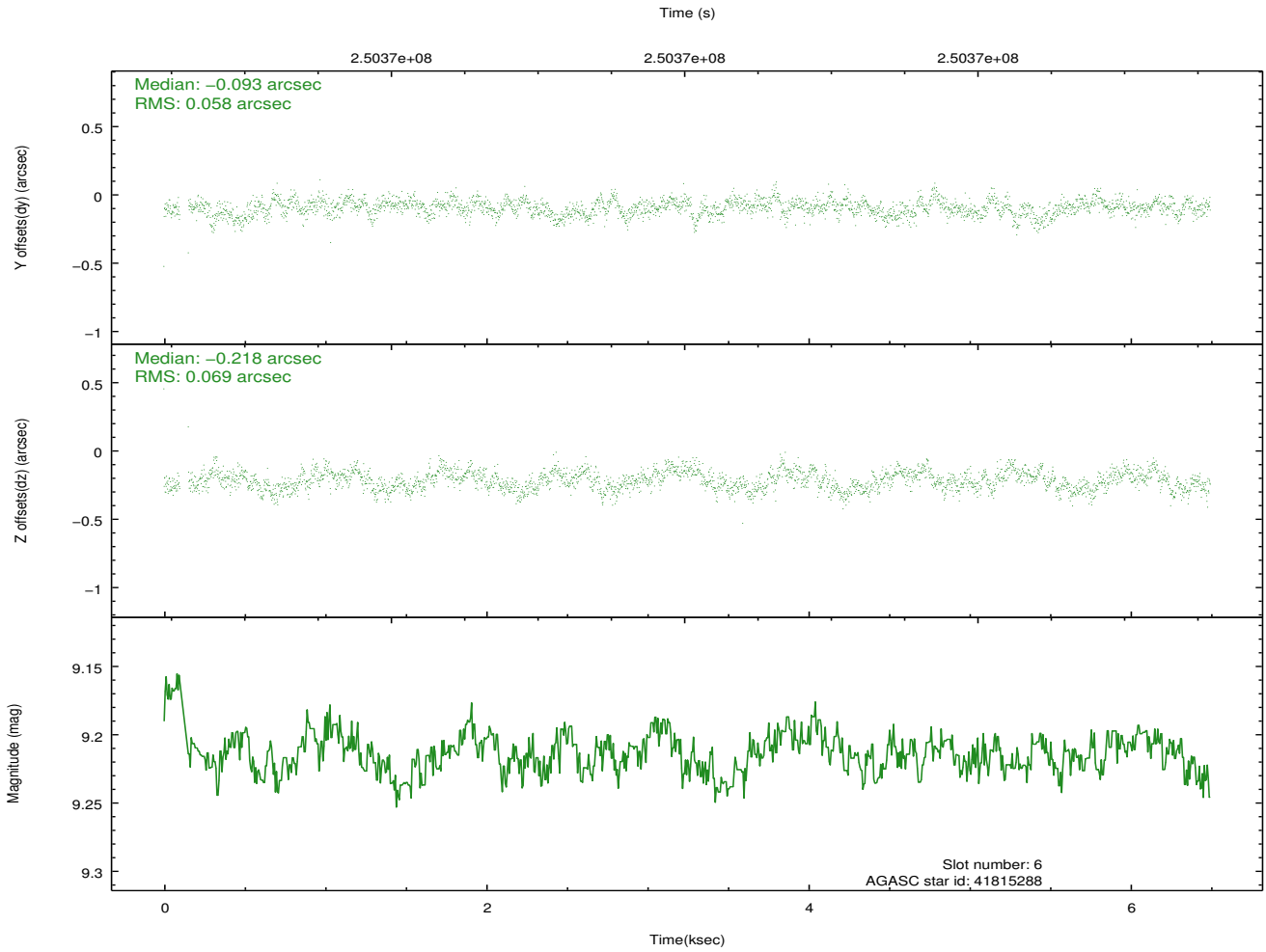
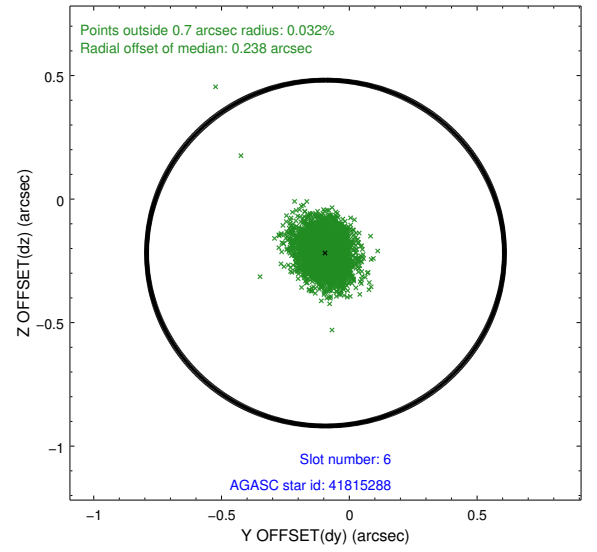
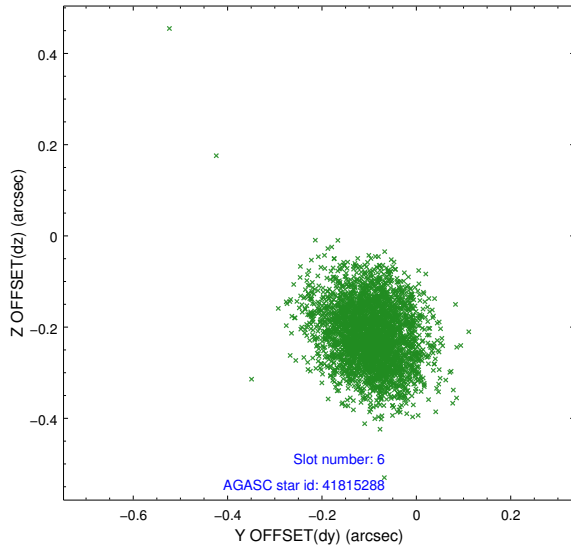
2.4.2 Slot 4



2.4.3 Slot 5

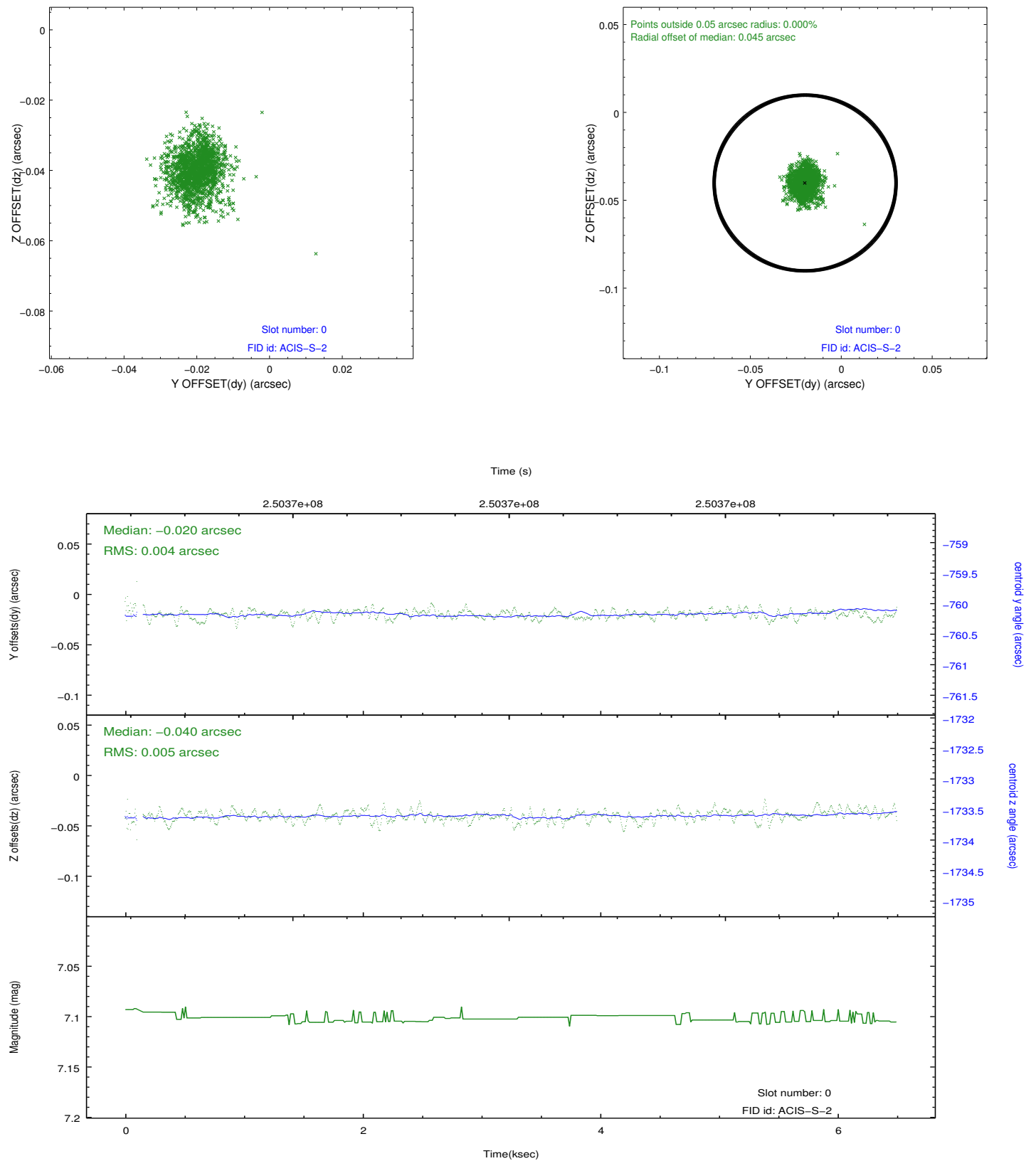


2.4.4 Slot 6

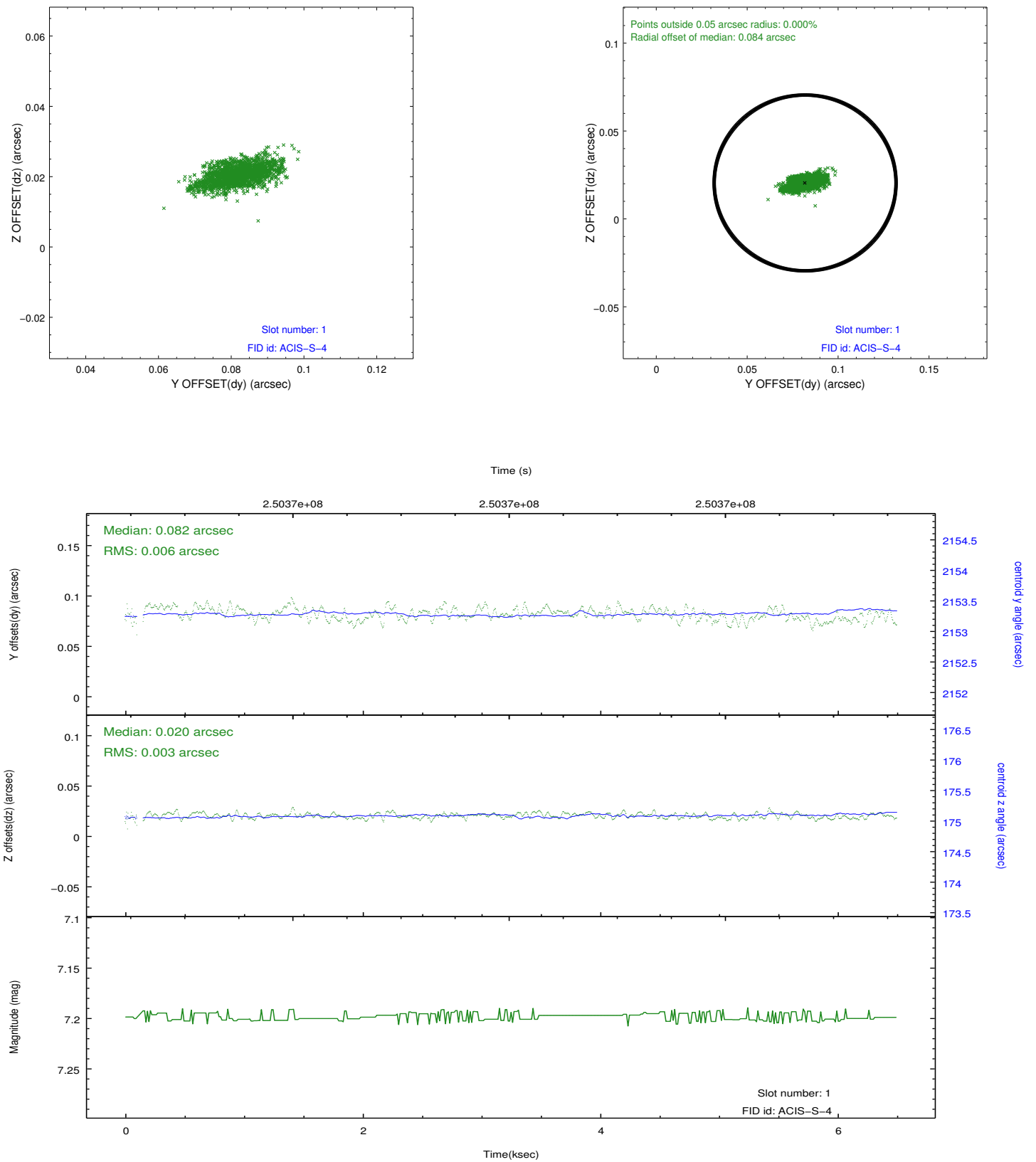


2.5 FID Slots

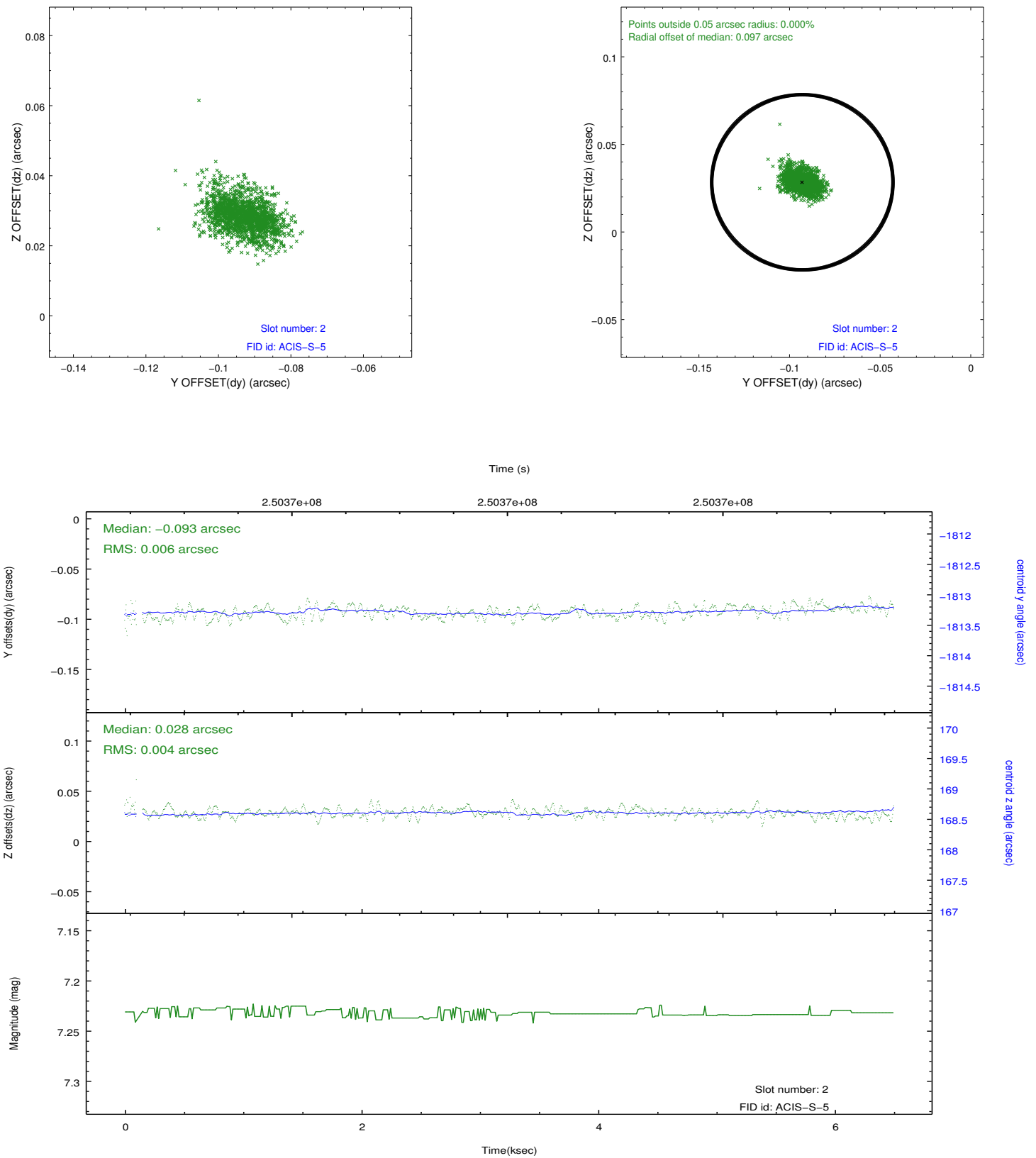
2.5.1 Slot 0



2.5.2 Slot 1



2.5.3 Slot 2



A Summary

A.1 Status

V&V Scientist	Jen Lauer
V&V Date (YYYY-MM-DD)	2012.03.19
V&V Edition	1
V&V Disposition and Status	OK
V&V Charge Time	5.5962

A.2 Comments

Monitor in star in slot 7.