

# V&V Reference Report

## L2 ASCDS Version : 8.4.3.1

Observation 6732 - L2 Version 2  
Chandra X-Ray Center

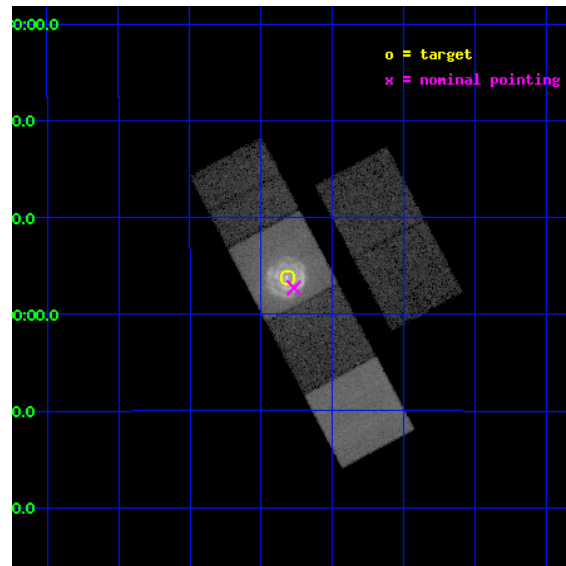
L2 Processing Date : Apr 6 2012

## Contents

<b>1</b>	<b>Front</b>	<b>2</b>
<b>2</b>	<b>OBI</b>	<b>3</b>
2.1	OBI . . . . .	3
2.1.1	Images . . . . .	3
2.1.2	Bias . . . . .	3
2.1.3	Parameters . . . . .	4
2.1.4	Events . . . . .	4
2.2	Compared Parameters . . . . .	5
2.3	Aspect . . . . .	6
2.4	Star Slots . . . . .	9
2.4.1	Slot 3 . . . . .	9
2.4.2	Slot 4 . . . . .	10
2.4.3	Slot 5 . . . . .	11
2.4.4	Slot 6 . . . . .	12
2.4.5	Slot 7 . . . . .	13
2.5	FID Slots . . . . .	14
2.5.1	Slot 0 . . . . .	14
2.5.2	Slot 1 . . . . .	15
2.5.3	Slot 2 . . . . .	16
<b>A</b>	<b>Summary</b>	<b>17</b>
A.1	Status . . . . .	17
A.2	Comments . . . . .	17

# 1 Front

seq_num	500679	Sequence number
obs_id	6732	Observation id
title	Measuring Magnetar Velocities with Chandra	Proposal title
observer	Dr. Shami Chatterjee	Principal investigator
object	1E 1841-045	Source name
dtcycle	0	&#160
cycle	P	events from which exps? Prim/Second/Both
ra_targ	280.329167	Observer's specified target RA [deg]
dec_targ	-4.937222	Observer's specified target Dec [deg]
ra_nom	280.31791433208	Nominal RA [deg]
dec_nom	-4.9546970270681	Nominal Dec [deg]
roll_nom	242.05211844662	Nominal Roll [deg]
revision	2	Processing version of data
ontime	25177.599906266	Sum of GTIs [s]
livetime	24858.785976122	Livetime [s]
ontime2	25177.599906266	Sum of GTIs [s]
ontime3	25177.599906266	Sum of GTIs [s]
ontime5	25177.599906266	Sum of GTIs [s]
ontime6	25177.599906266	Sum of GTIs [s]
ontime7	25177.599906266	Sum of GTIs [s]
ontime8	25177.599906266	Sum of GTIs [s]
l2events	307628	Number of level 2 events

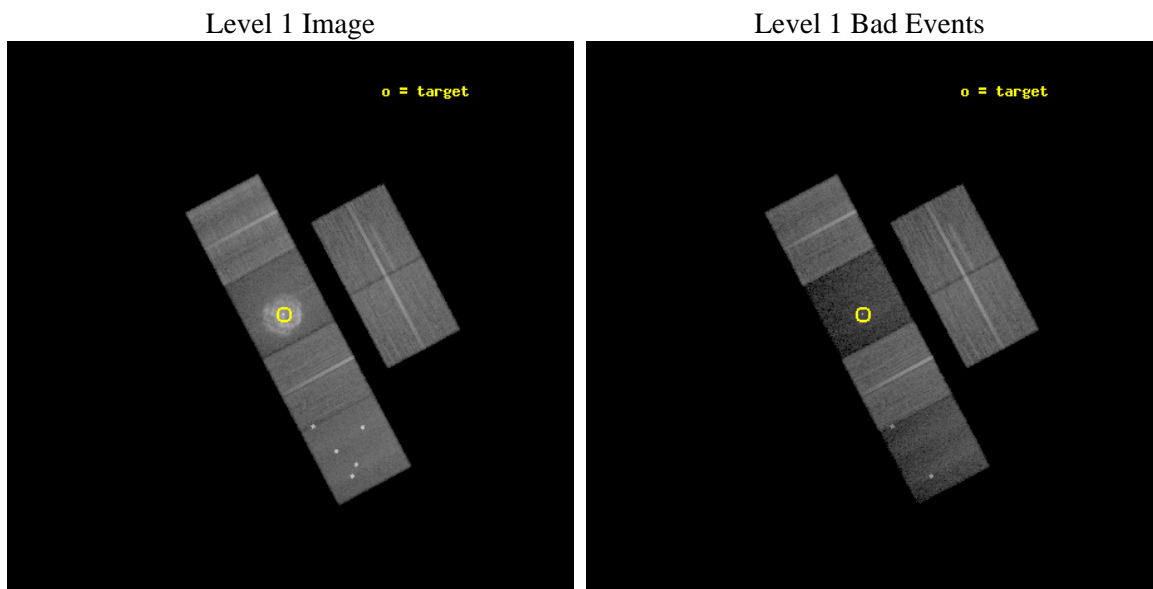




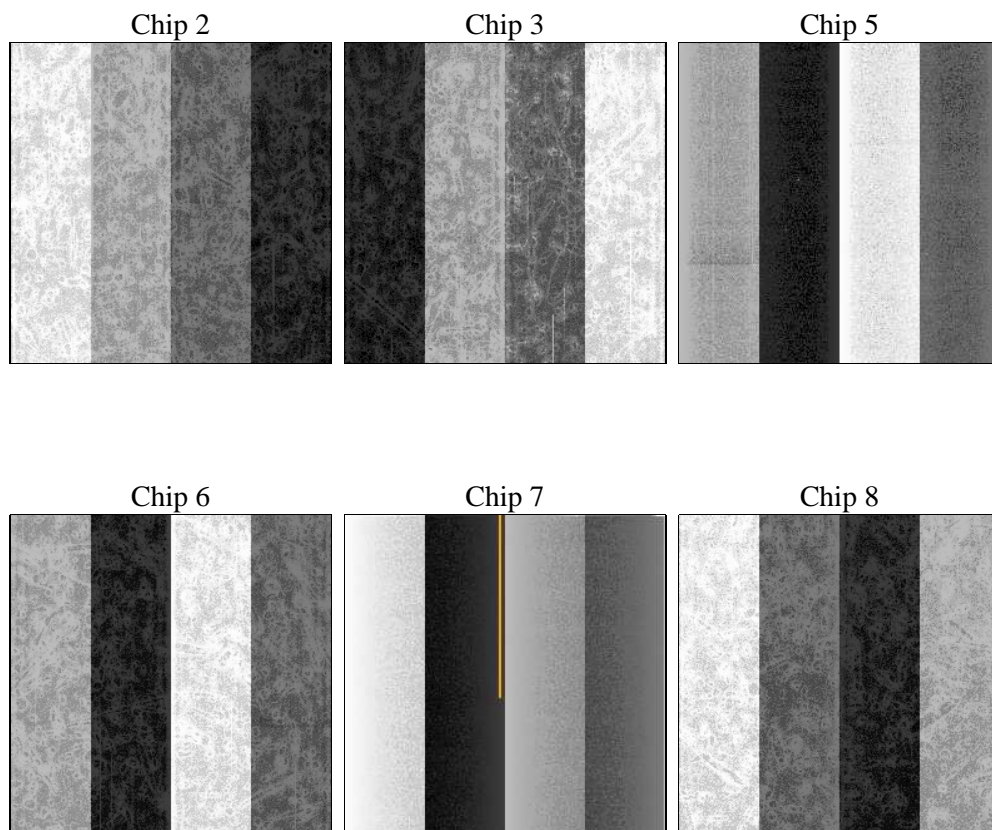
## 2 OBI

### 2.1 OBI

#### 2.1.1 Images



#### 2.1.2 Bias



### 2.1.3 Parameters

obi_num	0	Obi number	sched_exp_time	25000.000000	[s] Scheduled observation exposure time
ascdsver	8.4.3.1	Processing system revision	ontime	25177.599906266	Sum of GTIs [s]
caldsver	4.4.9	&#160	ontime2	25177.599906266	Sum of GTIs [s]
date	2012-04-06T03:44:15	Date and time of file creation	ontime3	25177.599906266	Sum of GTIs [s]
revision	2	Processing version of data	ontime5	25177.599906266	Sum of GTIs [s]
			ontime6	25177.599906266	Sum of GTIs [s]
			ontime7	25177.599906266	Sum of GTIs [s]
			ontime8	25177.599906266	Sum of GTIs [s]
			l1events	1125789	Number of level 1 events

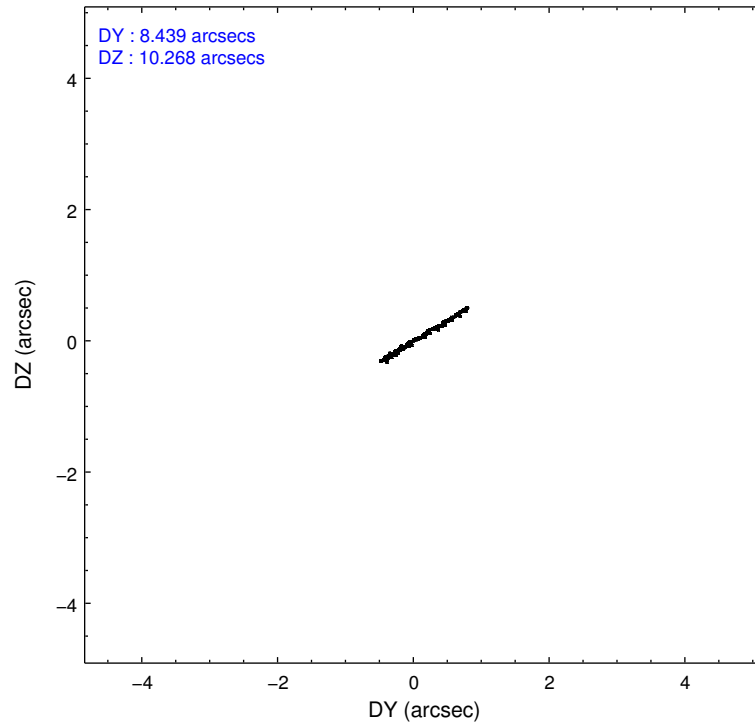
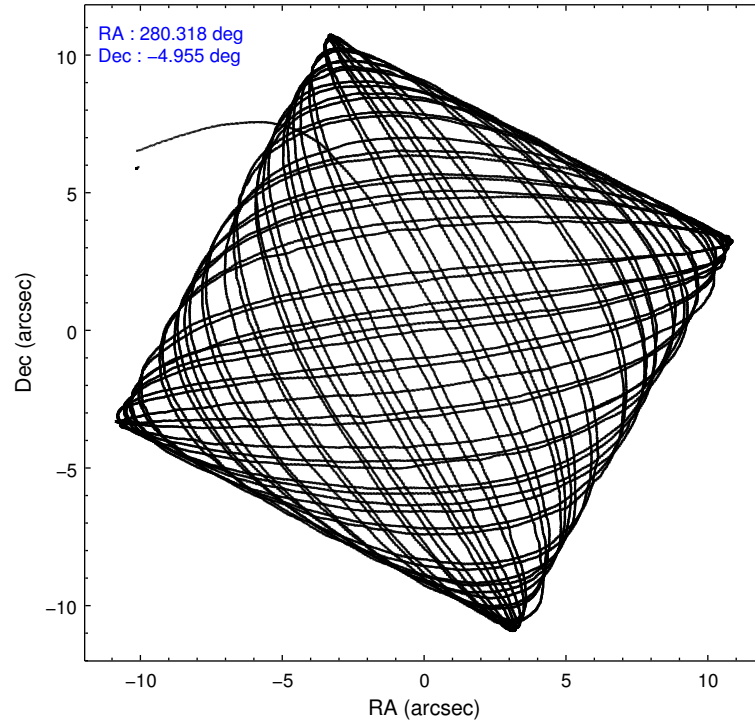
### 2.1.4 Events

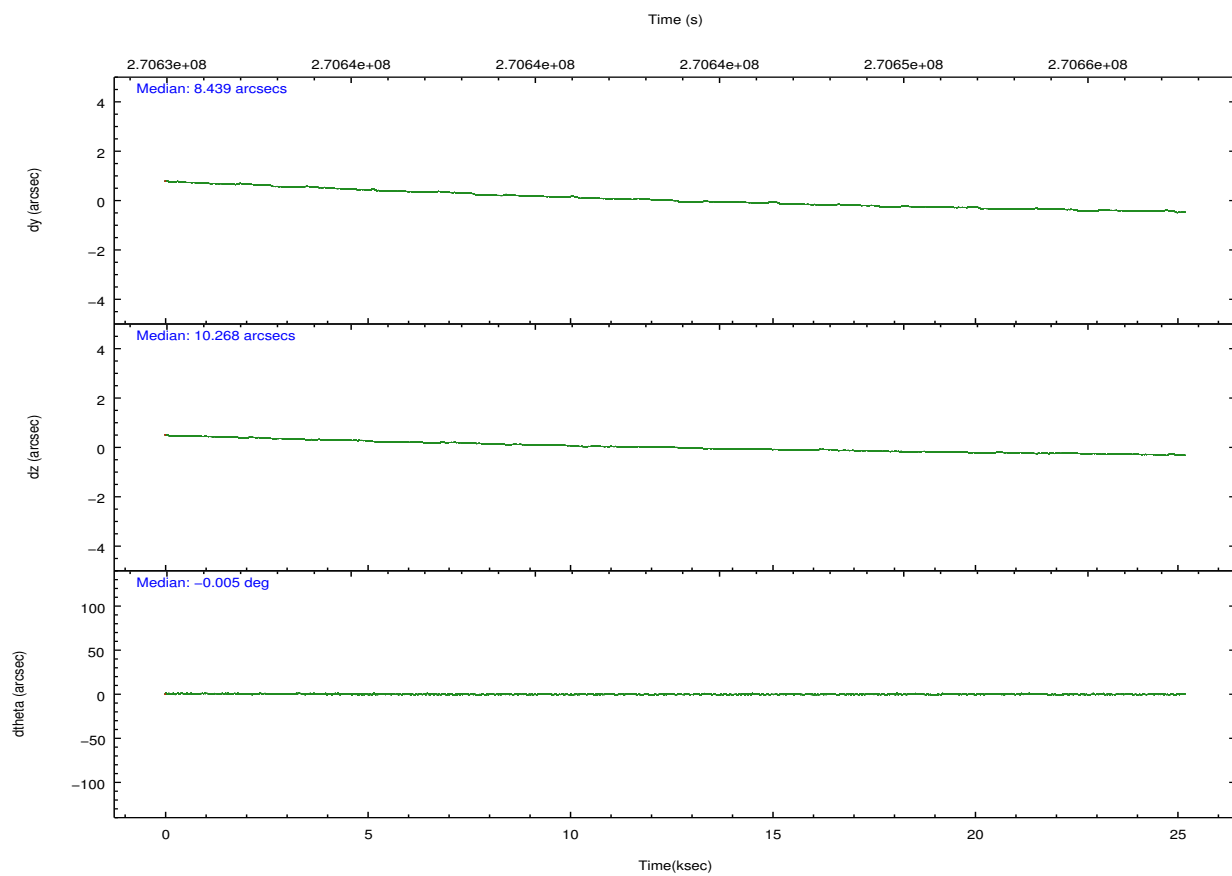
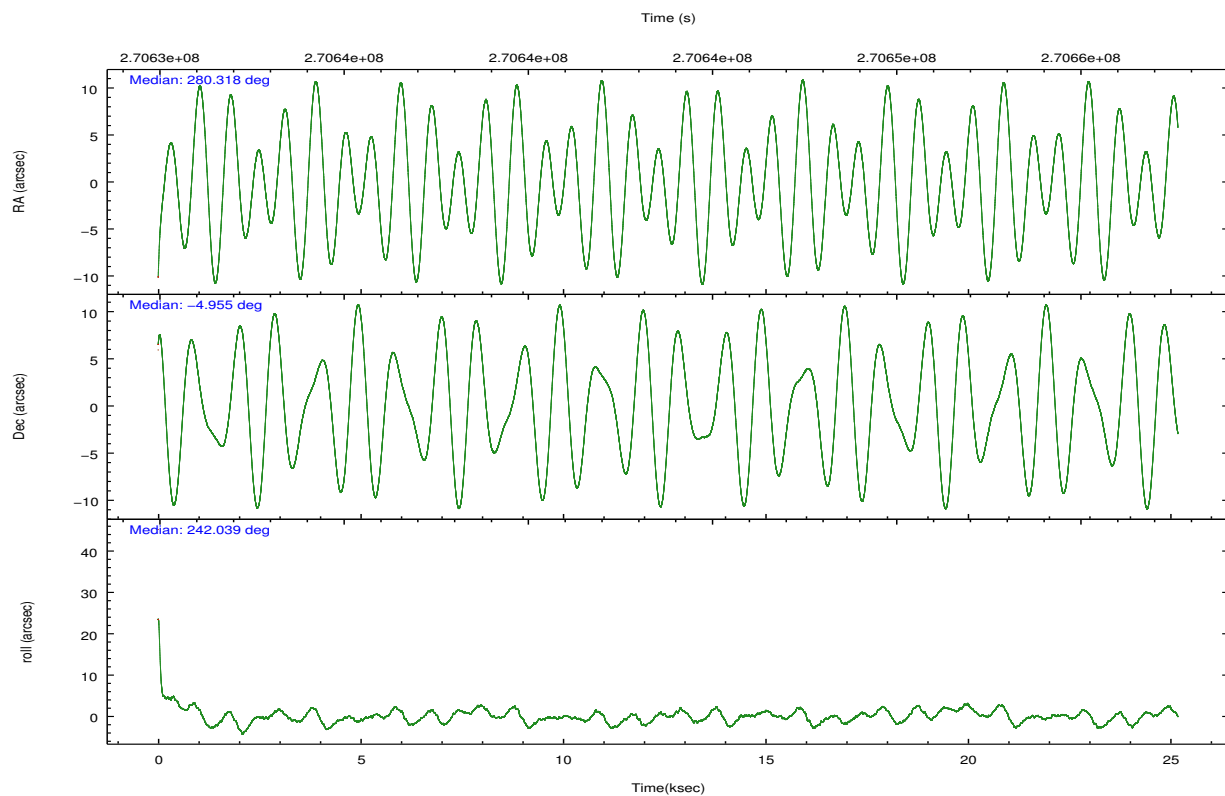
	ccd 2	ccd 3	ccd 5	ccd 6	ccd 7	ccd 8		ccd 2	ccd 3	ccd 5	ccd 6	ccd 7	ccd 8
level 1 events	190682	164158	171578	168463	225579	205329	grade 0 events	7073	7051	28246	9761	36822	16205
rejected events	175262	149430	63452	149649	49161	154218		3%	4%	16%	5%	16%	7%
rejected %	91%	91%	36%	88%	21%	75%	grade 1 events	109	101	2532	97	438	176
								0%	0%	1%	0%	0%	0%
							grade 2 events	3576	2883	33216	3667	46053	12350
								1%	1%	19%	2%	20%	6%
							grade 3 events	1560	1622	5180	1801	20150	5521
								0%	0%	3%	1%	8%	2%
							grade 4 events	1635	1581	4760	1697	19937	5025
								0%	0%	2%	1%	8%	2%
							grade 5 events	2587	3239	12160	3173	11902	5810
								1%	1%	7%	1%	5%	2%
							grade 6 events	2086	2089	40102	2532	56515	14125
								1%	1%	23%	1%	25%	6%
							grade 7 events	172056	145592	45382	145735	33762	146117
								90%	88%	26%	86%	14%	71%

## 2.2 Compared Parameters

Parameter	Planned	Actual	Parameter	Planned	Actual
Instrument	ACIS	ACIS	Obspar format version number	7	7
Detector	ACIS-235678	ACIS-235678	Obspar file type	PREDICTED	ACTUAL
Grating	NONE	NONE	Obspar update status	NONE	UPDATED
Data mode	FAINT	FAINT	Number of optional ACIS chips dropped	0	0
Observation mode	POINTING	POINTING	On-chip summing requested	N	N
[deg] Pointing RA	280.316559	280.3179143320825	Subarray requested	NONE	NONE
[deg] Pointing Dec	-4.927492	-4.954697027068075	Alternating exposures requested	N	N
[deg] Pointing Roll	241.895366	242.052118446623	[s] Primary exposure time	0.000000	3.2
[mm] SIM focus pos	-0.684267	-0.6828225247311905			
[mm] SIM defocus	0	0.001444936568705701			
[mm] SIM translation stage pos	-190.132523	-190.1400660498719			
[mm] SIM translation stage offset	0	0.00754346686406393			
[s] Observation start time (MET)	270631374.184000	270629677.9251			
Observation start date	2006-07-30T07:21:49	2006-07-30T06:54:37			
[s] Observation end time (MET)	270656374.184000	270657026.46388			
Observation end date	2006-07-30T14:18:29	2006-07-30T14:30:26			
Read mode	TIMED	TIMED			

## 2.3 Aspect



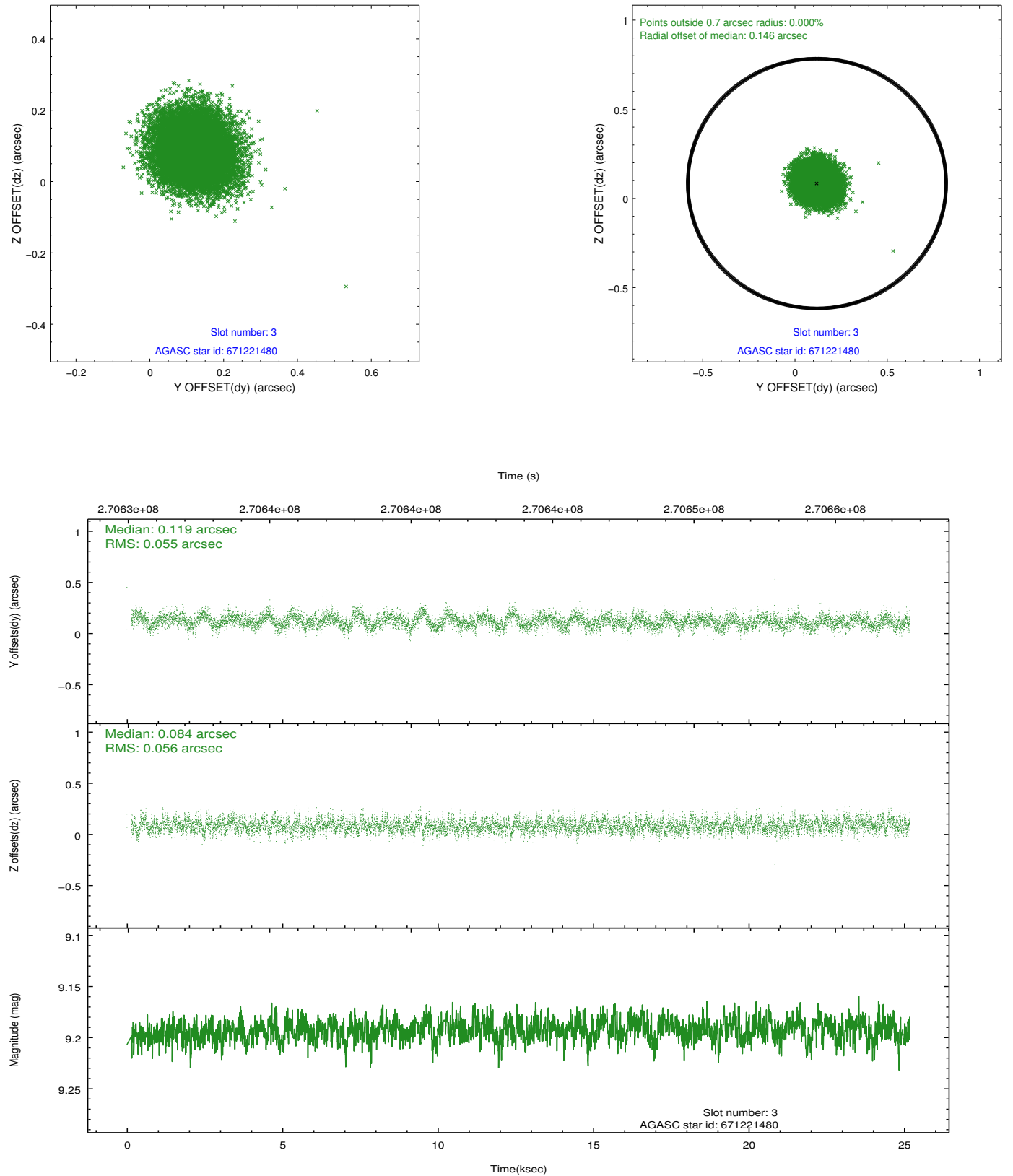


### Slot Statistics

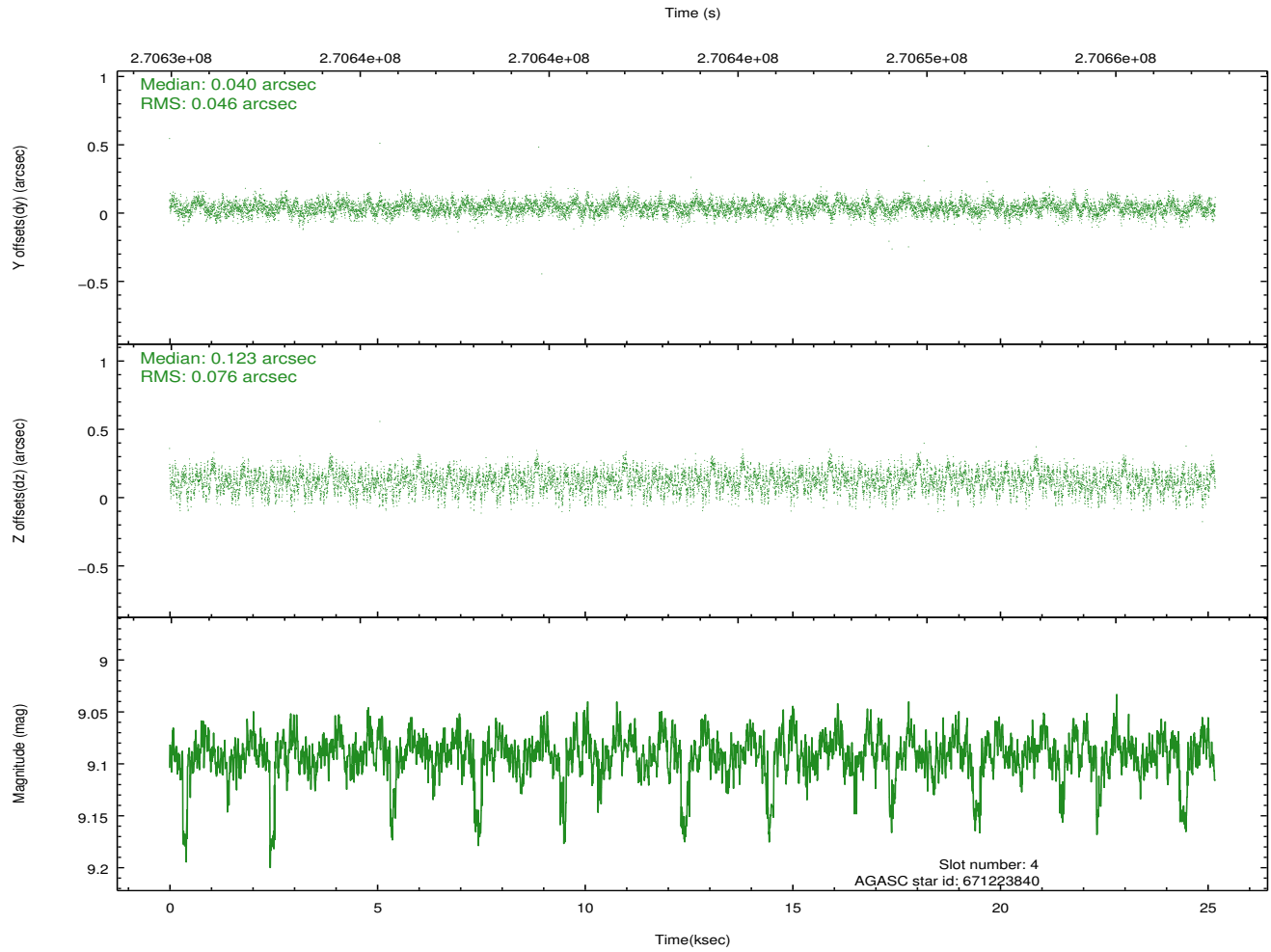
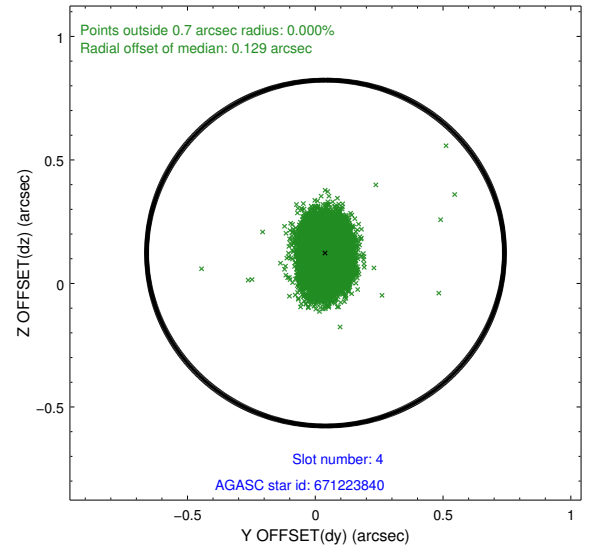
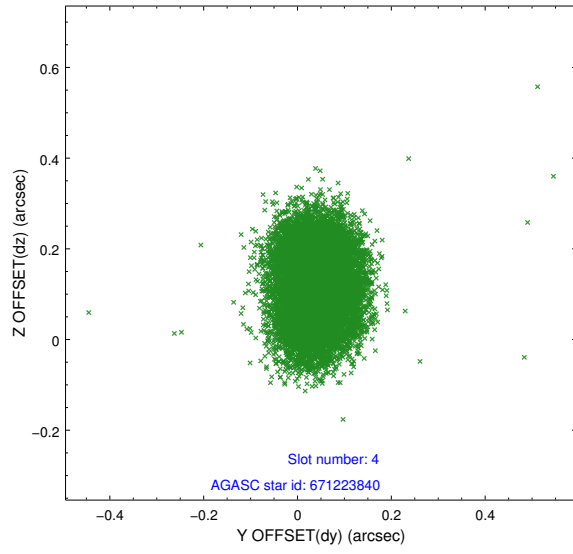
slot	status	id	mag	n_pts	med_dy	med_dz	dr1	dr2	ra	dec	mean_y	mean_z
0	FID	ACIS-S-2	7.11	6143	-0.052	-0.032	0.009	0.017	0.000000	0.000000	-761.30	-1731.60
1	FID	ACIS-S-4	7.21	6142	0.153	0.034	0.020	0.031	0.000000	0.000000	2152.09	176.90
2	FID	ACIS-S-5	7.24	6141	-0.131	0.007	0.017	0.028	0.000000	0.000000	-1814.12	170.58
3	GUIDE	671221480	9.19	12213	0.119	0.084	0.084	0.135	280.711295	-4.815985	-1020.54	1060.41
4	GUIDE	671223840	9.09	12257	0.040	0.123	0.094	0.153	279.920616	-4.408218	-978.40	-2133.68
5	GUIDE	671224352	6.83	12285	-0.071	0.054	0.057	0.090	280.197595	-4.496426	-1167.31	-1107.61
6	GUIDE	671227032	9.07	12239	-0.014	-0.021	0.080	0.130	279.928425	-4.802281	259.17	-1439.98
7	GUIDE	671222976	7.95	12285	-0.076	-0.242	0.067	0.106	281.033634	-5.005625	-962.45	2401.42

## 2.4 Star Slots

### 2.4.1 Slot 3

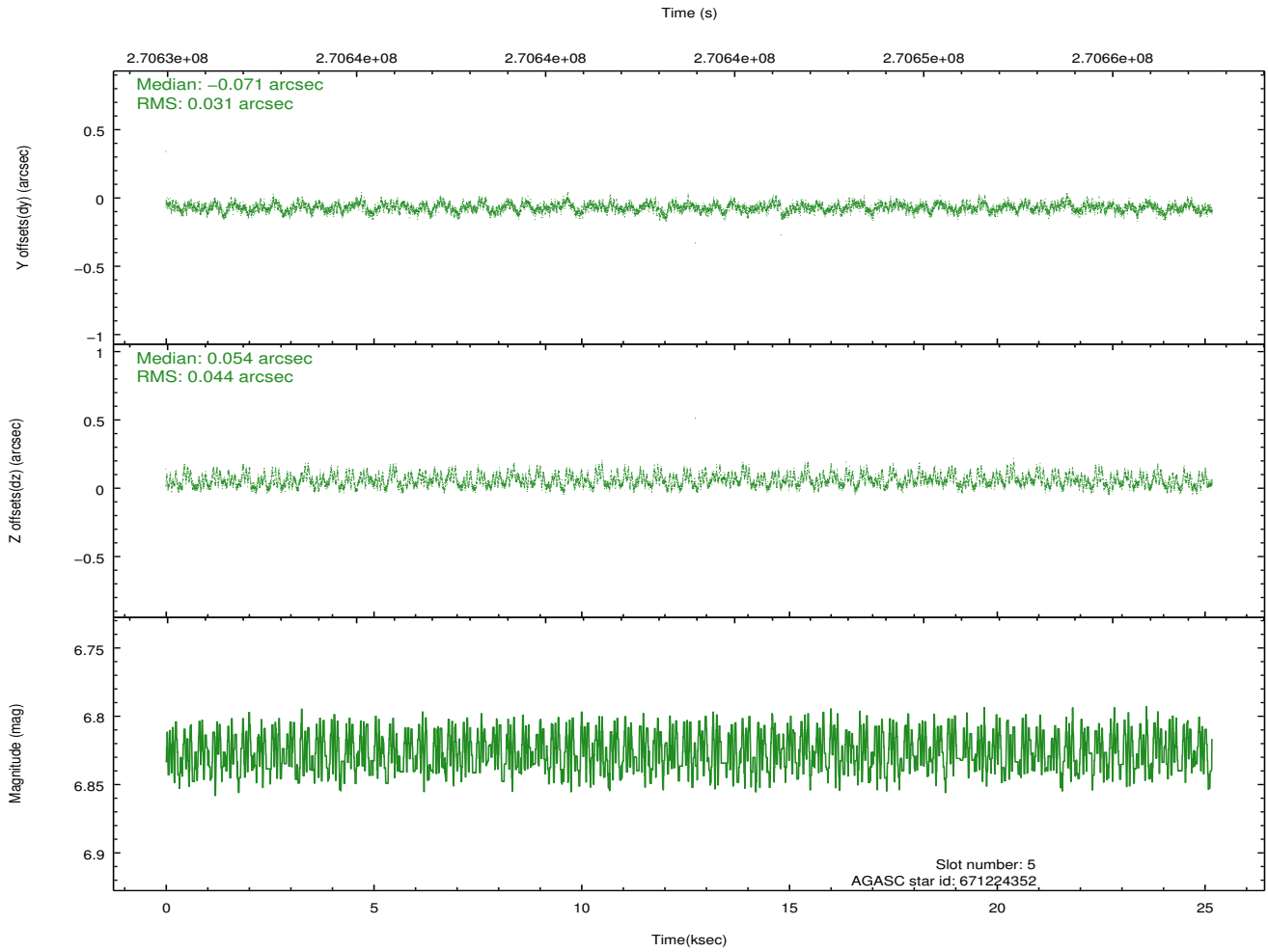
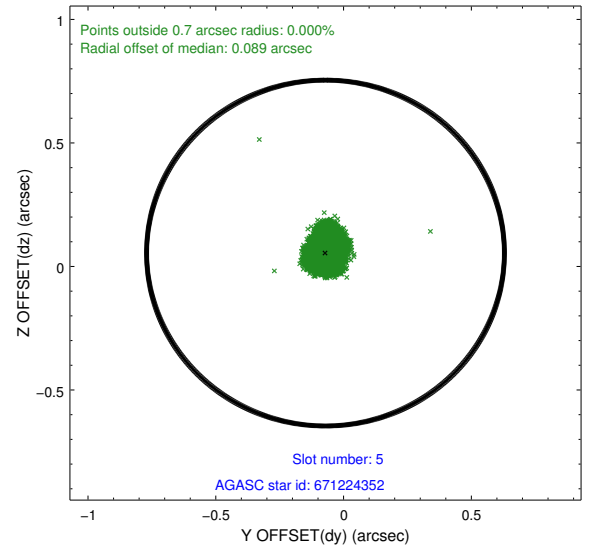
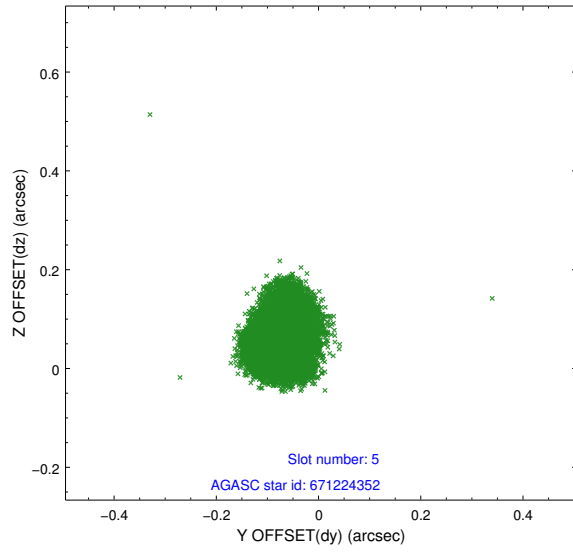


## 2.4.2 Slot 4

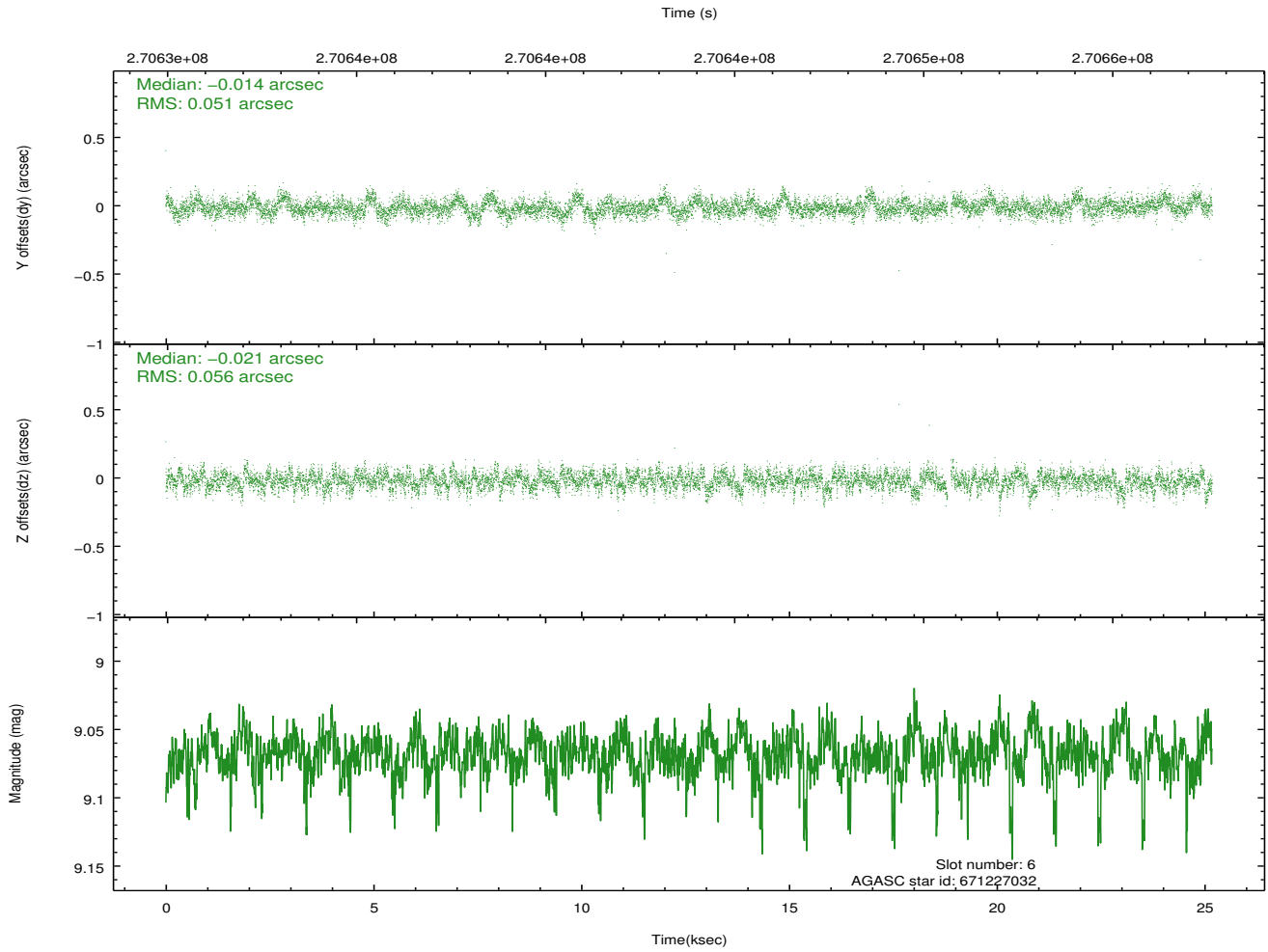
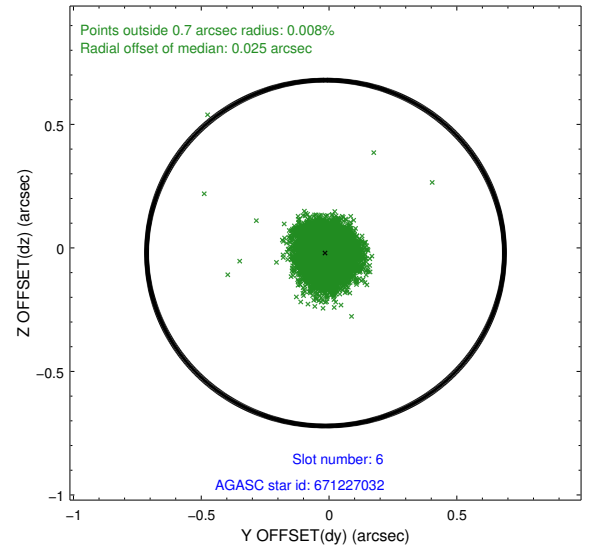
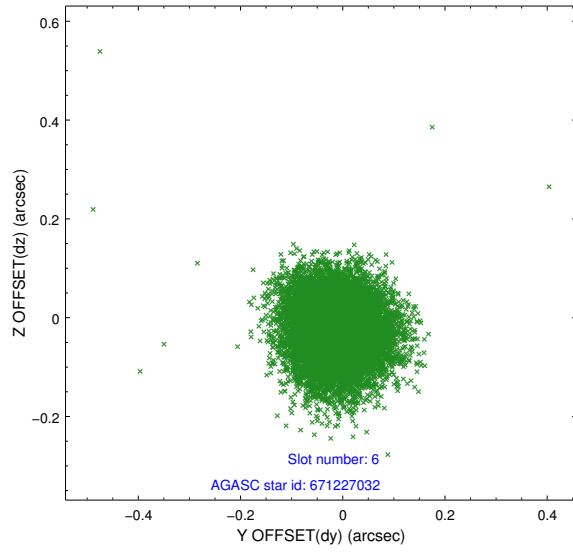




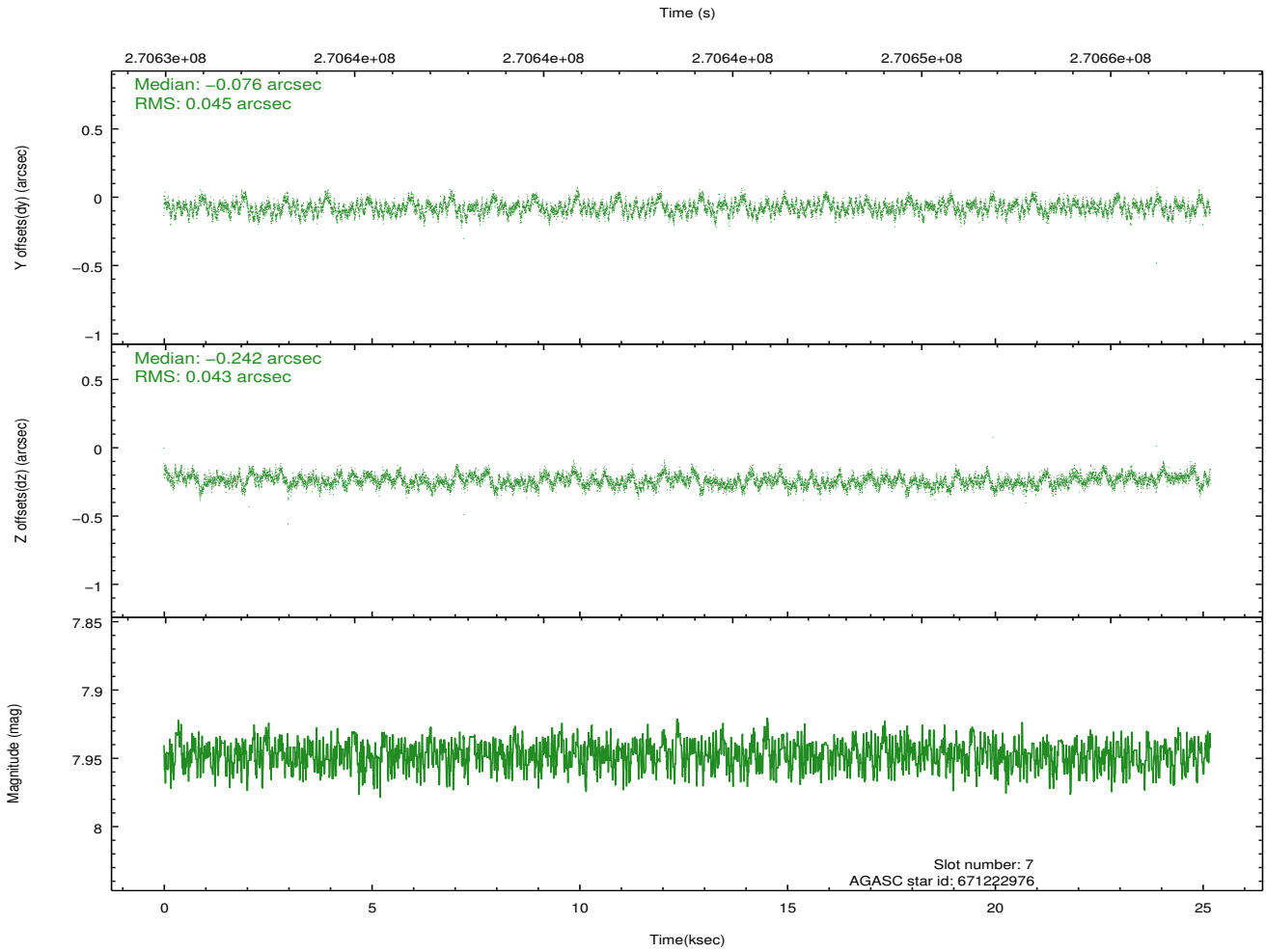
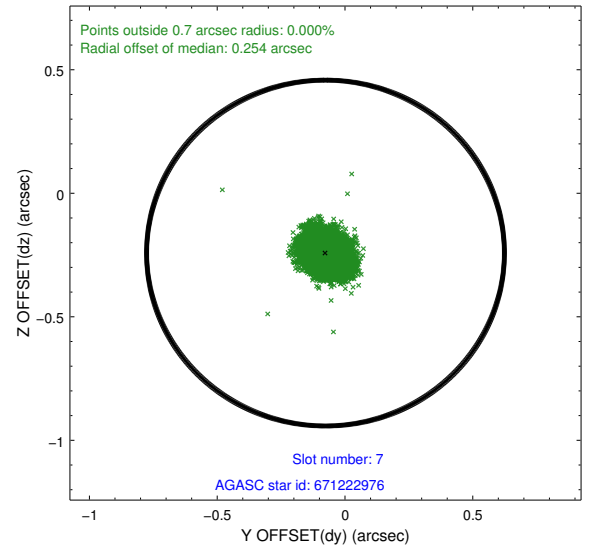
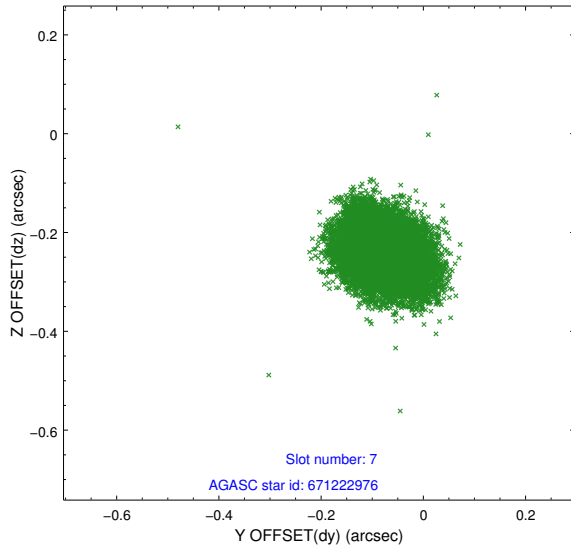
### 2.4.3 Slot 5



## 2.4.4 Slot 6

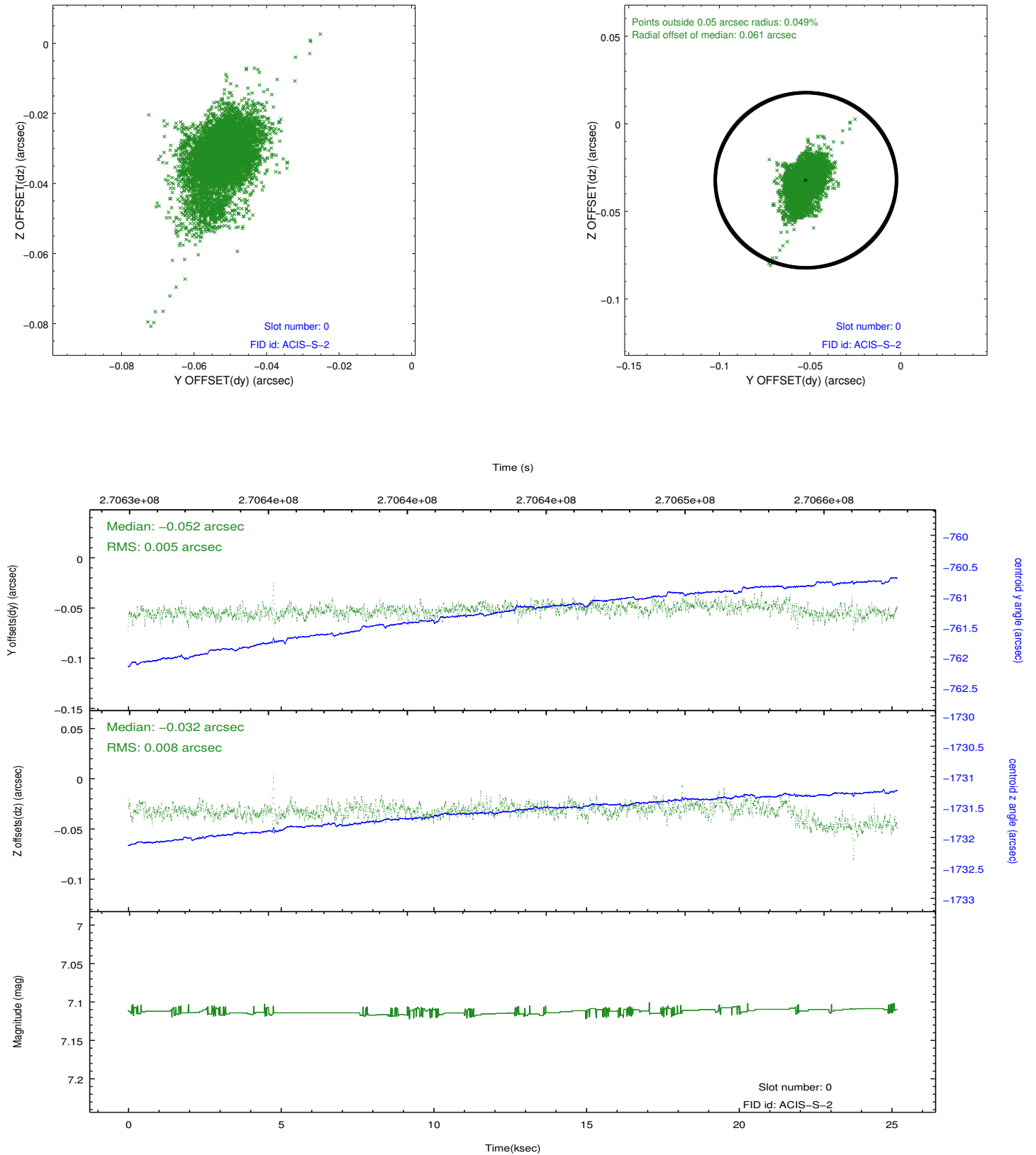


## 2.4.5 Slot 7

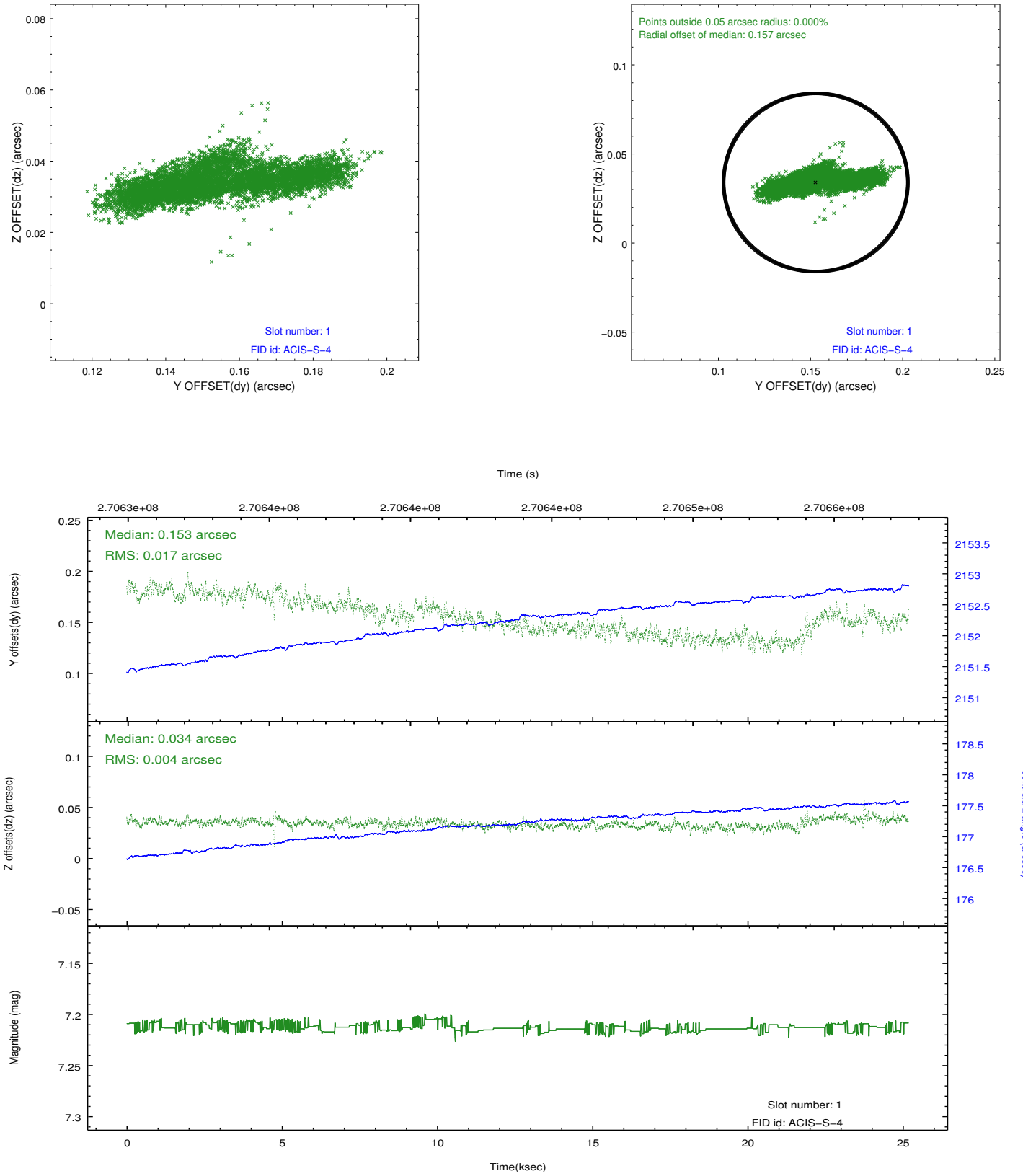


## 2.5 FID Slots

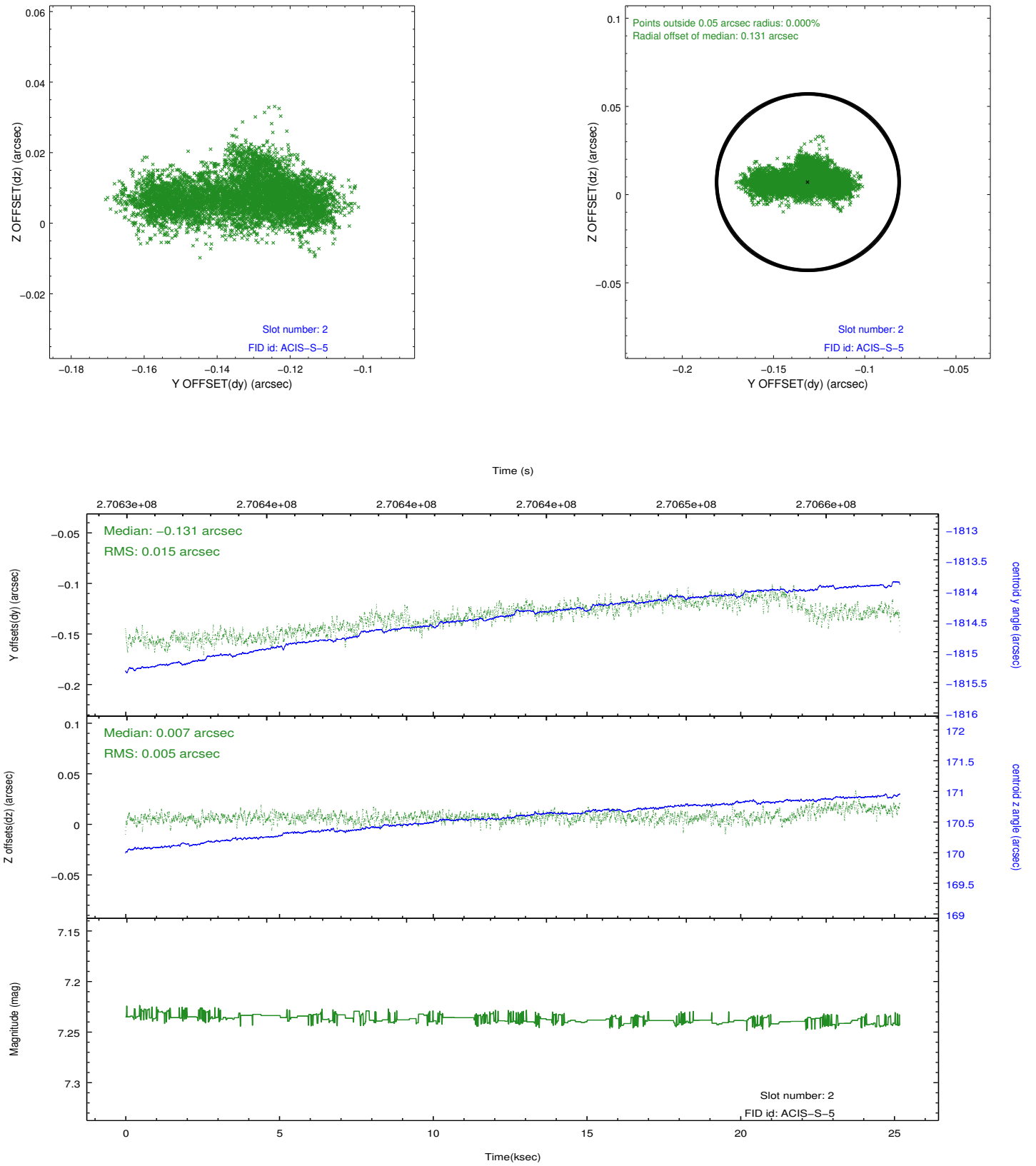
### 2.5.1 Slot 0



## 2.5.2 Slot 1



### 2.5.3 Slot 2



## A Summary

### A.1 Status

V&V Scientist	Beth Sundheim
V&V Date (YYYY-MM-DD)	2012.04.06
V&V Edition	1
V&V Disposition and Status	OK
V&V Charge Time	25.1775999

### A.2 Comments