

V&V Reference Report

L2 ASCDS Version : 8.4.3

Observation 6552 - L2 Version 4
Chandra X-Ray Center

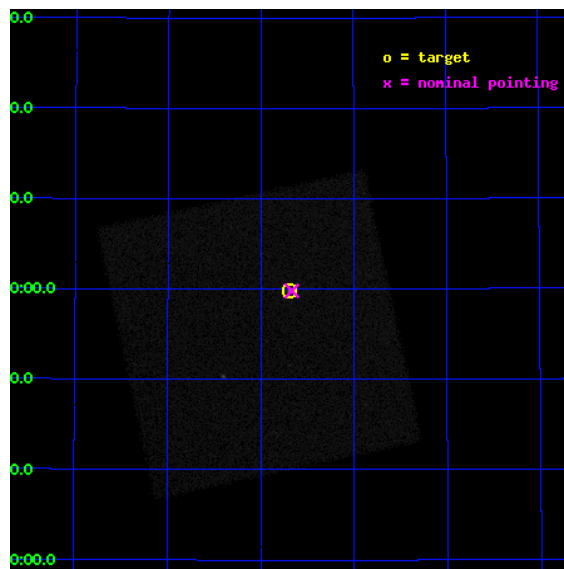
L2 Processing Date : Aug 10 2012

Contents

1	Front	2
2	OBI	3
2.1	OBI	3
2.1.1	Images	3
2.1.2	Parameters	4
2.1.3	Events	4
2.2	Compared Parameters	5
2.3	Aspect	6
2.4	Star Slots	9
2.4.1	Slot 3	9
2.4.2	Slot 4	10
2.4.3	Slot 5	11
2.4.4	Slot 6	12
2.4.5	Slot 7	13
2.5	FID Slots	14
2.5.1	Slot 0	14
2.5.2	Slot 1	15
2.5.3	Slot 2	16
A	Summary	17
A.1	Status	17
A.2	Comments	17

1 Front

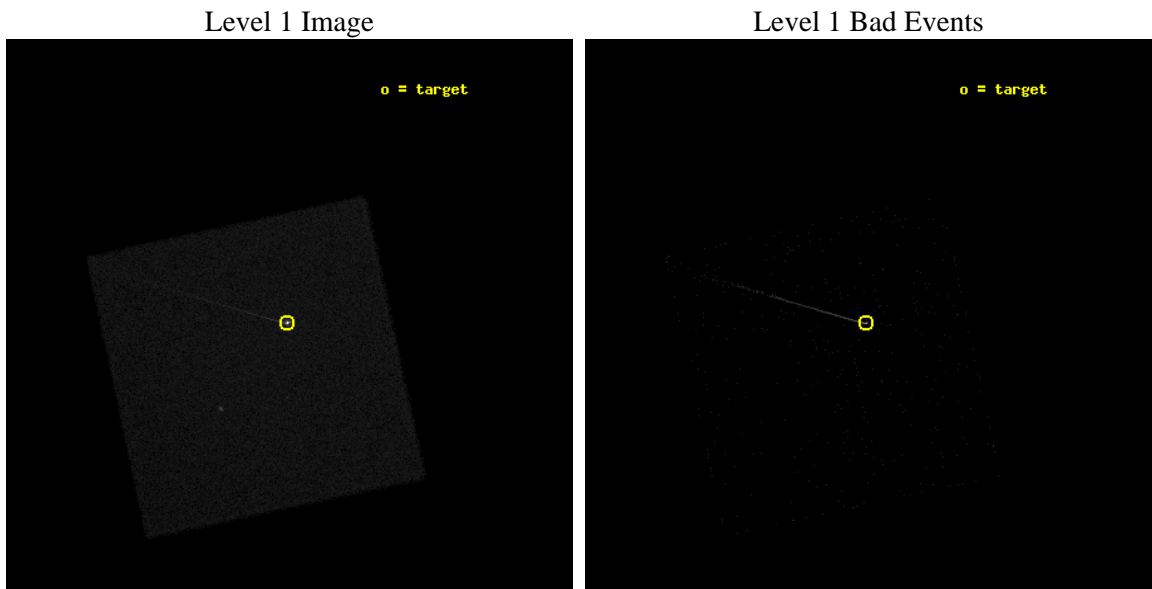
seq_num	290645	Sequence number
obs_id	6552	Observation id
title	Improving the De-Gap Corrections for the HRC-I	Proposal title
observer	Dr. CXC Calibration	Principal investigator
object	Capella	Source name
ra_targ	79.1725	Observer's specified target RA [deg]
dec_targ	45.998	Observer's specified target Dec [deg]
ra_nom	79.166430085735	Nominal RA [deg]
dec_nom	45.997013232612	Nominal Dec [deg]
roll_nom	212.82937350929	Nominal Roll [deg]
revision	4	Processing version of data
ontime	5193.9314904809	[s]
livetime	5146.096148135	Ontime multiplied by DTCOR
l2events	332881	Number of level 2 events



2 OBI

2.1 OBI

2.1.1 Images



2.1.2 Parameters

obi_num	1	Obi number	sched_exp_time	5000.000000	[s] Scheduled observation exposure time
ascdsver	8.4.5	Processing system revision	ontime	5193.9314904809	[s]
caldbver	4.5.1.1	 	l1events	496175	Number of level 1 events
date	2012-08-10T20:42:30	Date and time of file creation			
revision	4	Processing version of data			

2.1.3 Events

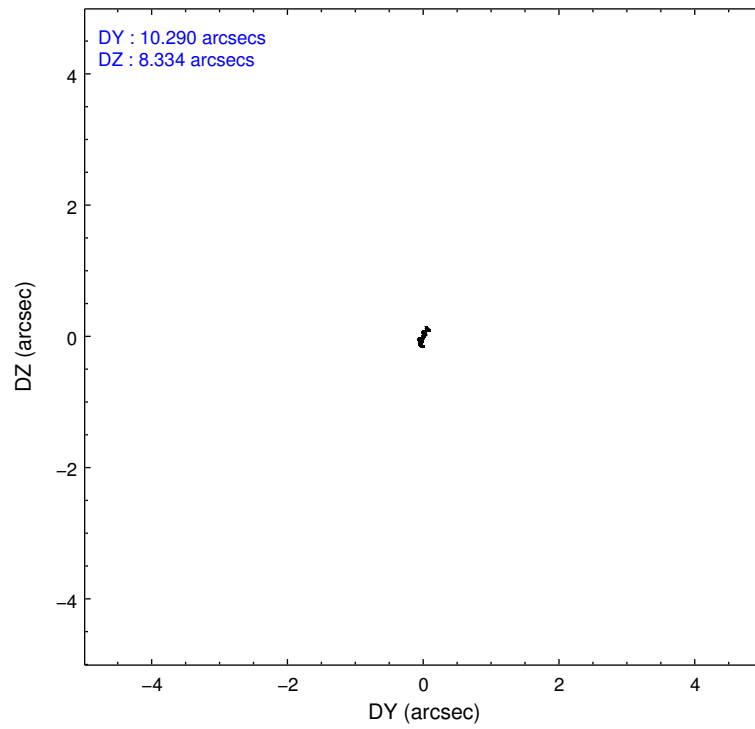
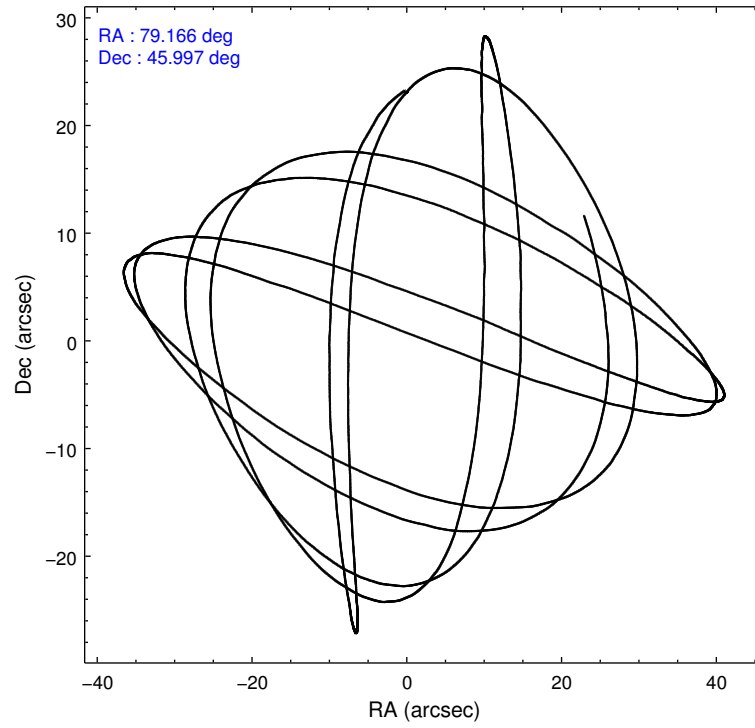
Level 1 Events

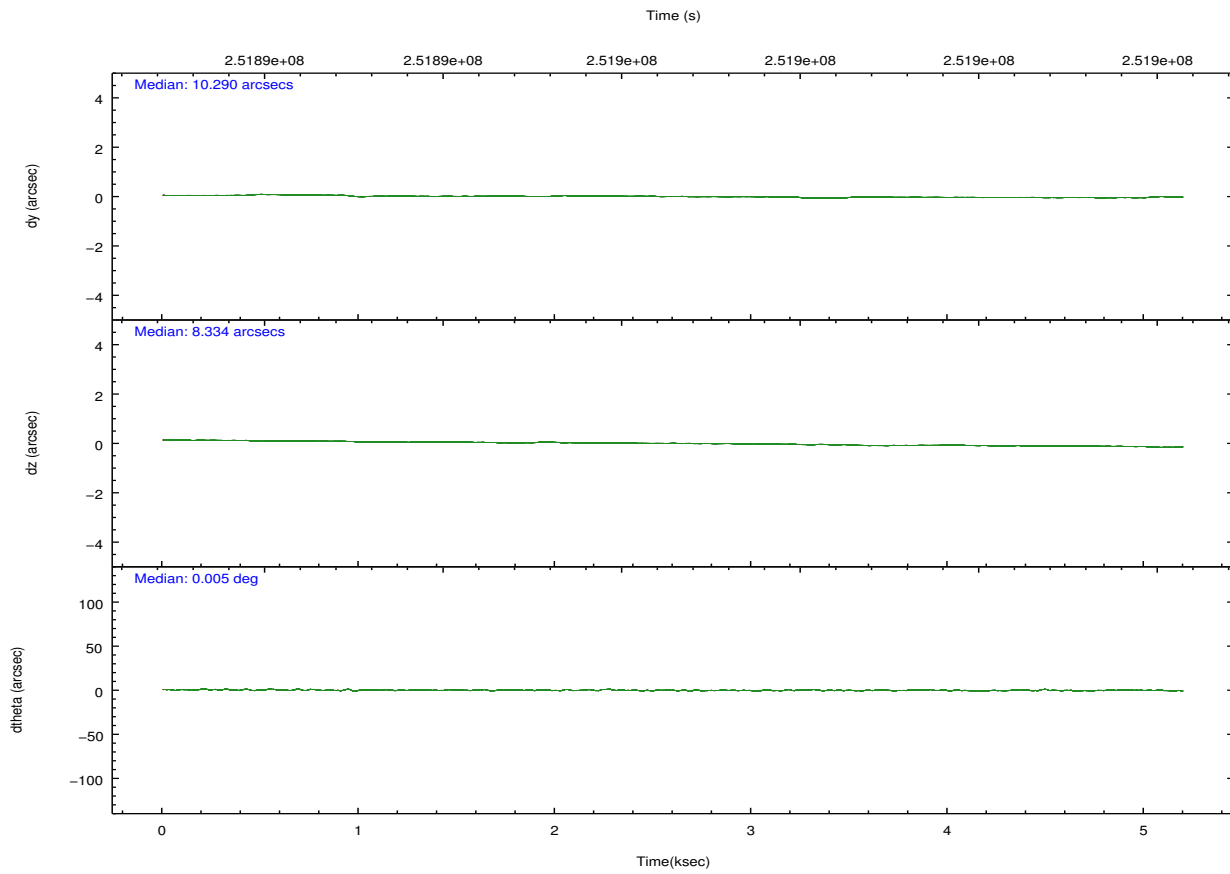
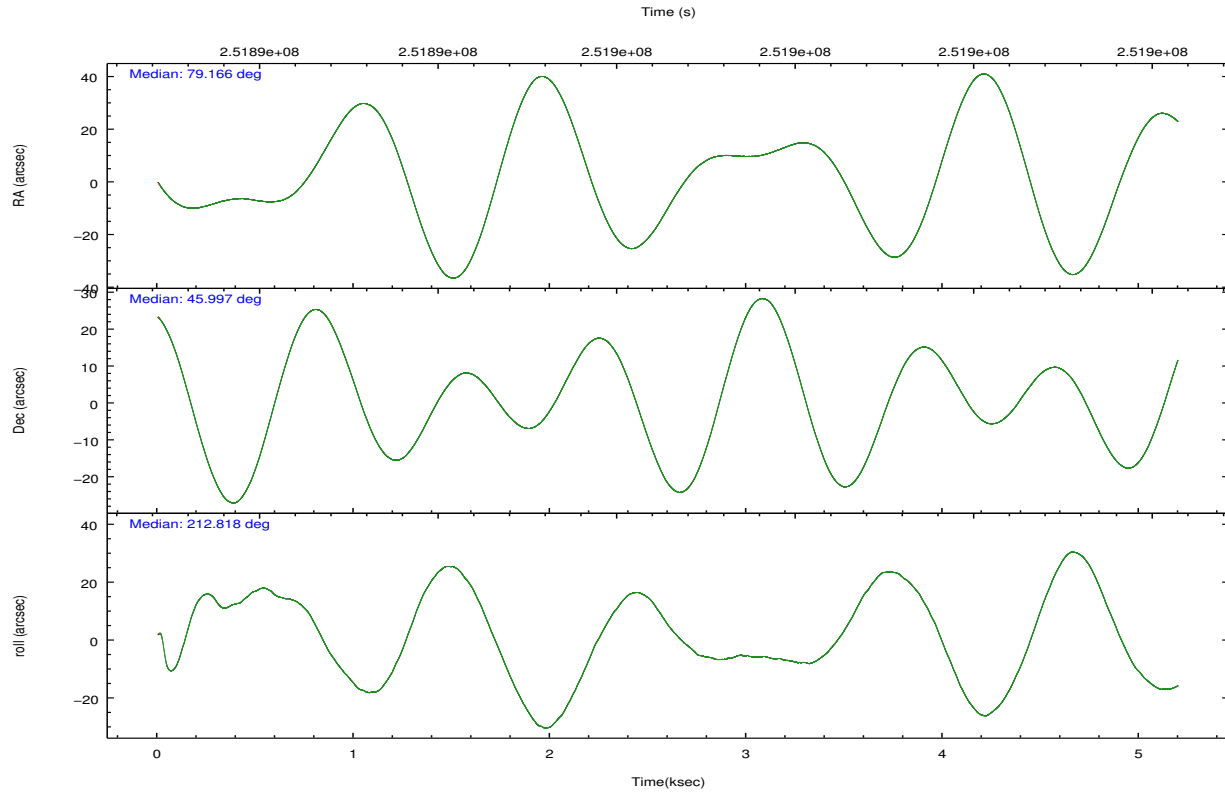
	segment 0
level 1 events	496175
rejected events	54101
rejected %	10%

2.2 Compared Parameters

Parameter	Planned	Actual	Parameter	Planned	Actual
Instrument	HRC	HRC	Obspar format version number	7	7
Detector	HRC-I	HRC-I	Obspar file type	PREDICTED	ACTUAL
Grating	NONE	NONE	Obspar update status	NONE	UPDATED
Data mode	OBSERVING	OBSERVING			
Observation mode	POINTING	POINTING			
[deg] Pointing RA	79.183603	79.16643008573479			
[deg] Pointing Dec	46.021657	45.99701323261211			
[deg] Pointing Roll	212.912440	212.8293735092853			
[mm] SIM focus pos	-1.040293	-1.038866356238299			
[mm] SIM defocus	0	0.001426264420575141			
[mm] SIM translation stage pos	108.985494	108.9829967461182			
[mm] SIM translation stage offset	18	18.00249214548336			
[s] Observation start time (MET)	251892890.184000	251892513.56463			
Observation start date	2005-12-25T10:13:46	2005-12-25T10:08:33			
[s] Observation end time (MET)	251897890.184000	251898482.13991			
Observation end date	2005-12-25T11:37:06	2005-12-25T11:48:02			

2.3 Aspect



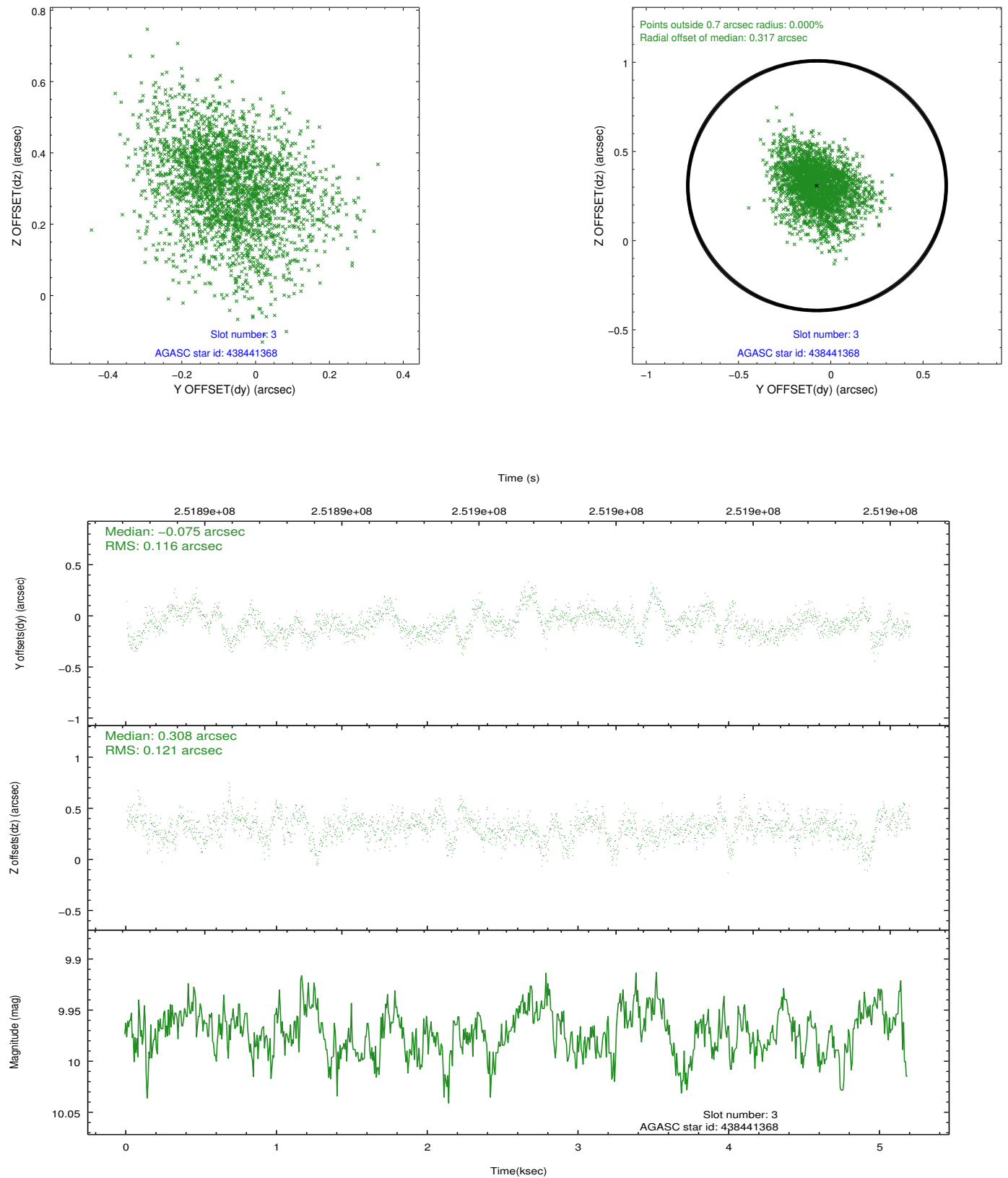


Slot Statistics

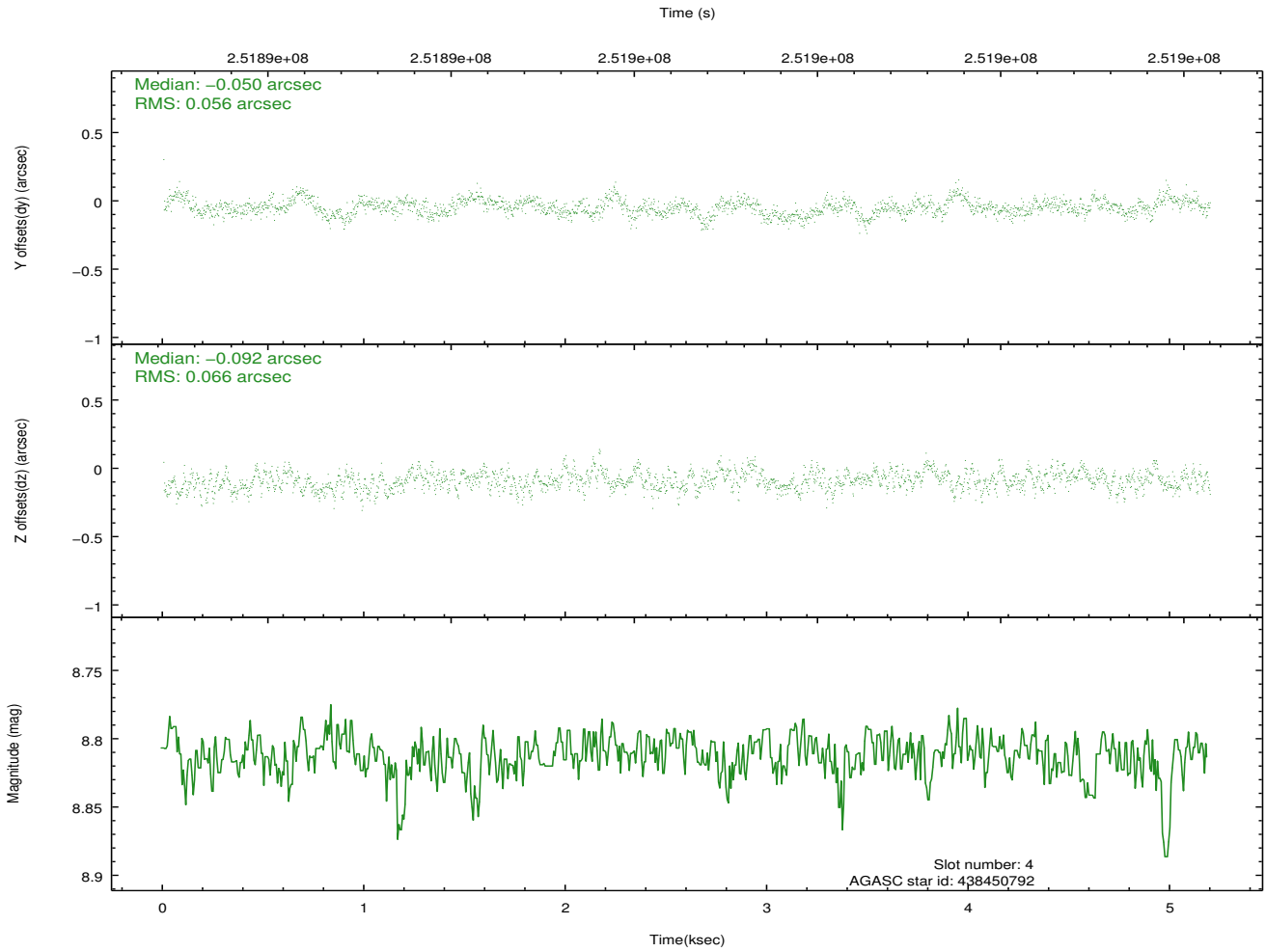
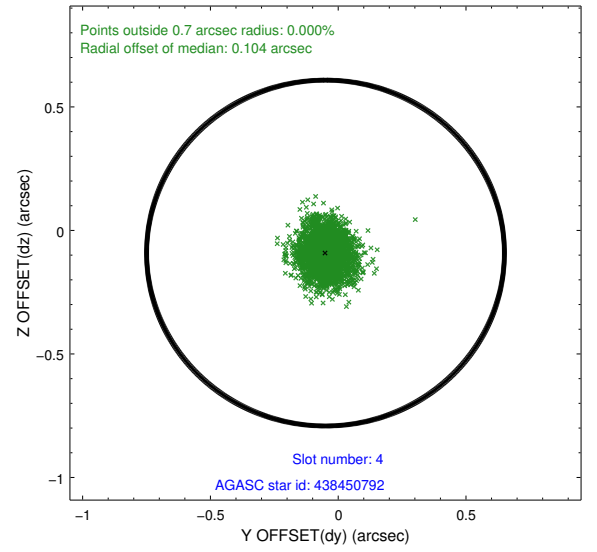
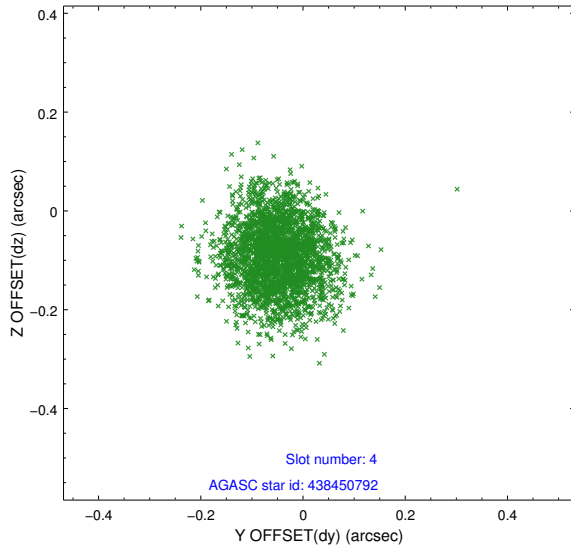
slot	status	id	mag	n_pts	med_dy	med_dz	dr1	dr2	ra	dec	mean_y	mean_z
0	FID	HRC-I-2	7.04	1268	-0.190	0.112	0.006	0.011	0.000000	0.000000	846.19	-927.55
1	FID	HRC-I-3	7.05	1268	0.086	-0.268	0.005	0.010	0.000000	0.000000	-1194.11	1377.36
2	FID	HRC-I-4	6.94	1268	0.223	0.068	0.006	0.011	0.000000	0.000000	1275.70	1377.25
3	GUIDE	438441368	9.97	2526	-0.075	0.308	0.176	0.297	78.646413	46.420494	336.44	-1933.45
4	GUIDE	438450792	8.81	2531	-0.050	-0.092	0.092	0.149	78.654240	46.382628	395.48	-1809.22
5	GUIDE	440150048	7.13	2535	0.016	-0.136	0.077	0.118	79.112838	46.416060	-624.13	-1288.75
6	GUIDE	440163960	8.88	2534	-0.008	-0.038	0.080	0.129	79.298370	45.827072	137.86	743.47
7	GUIDE	440164960	8.31	2533	0.113	-0.043	0.082	0.133	79.132526	46.140947	-126.47	-429.56

2.4 Star Slots

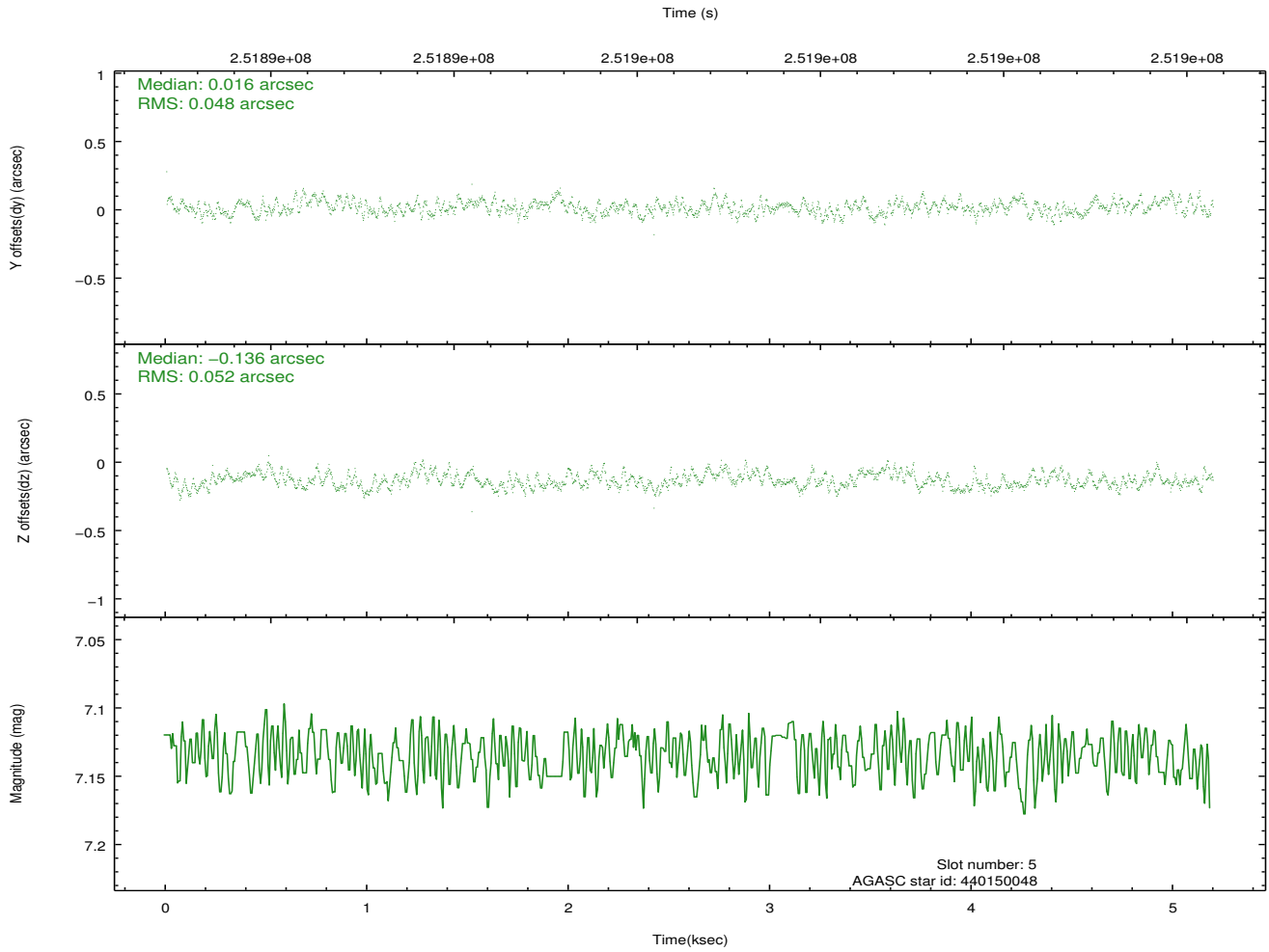
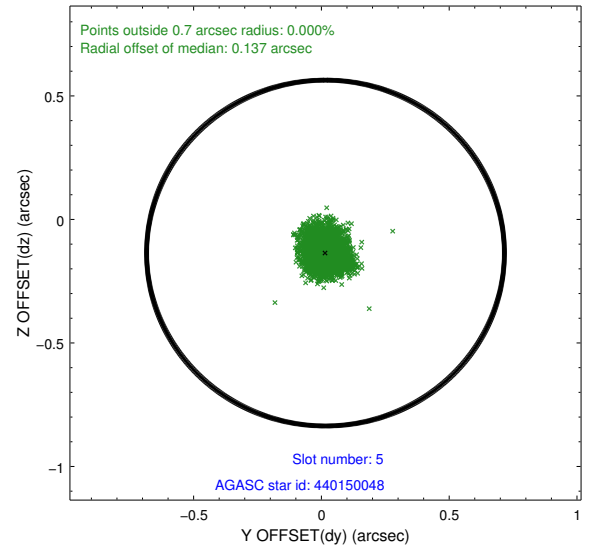
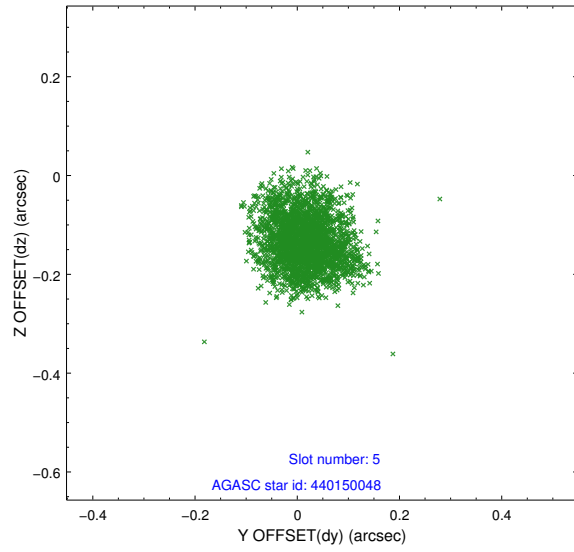
2.4.1 Slot 3



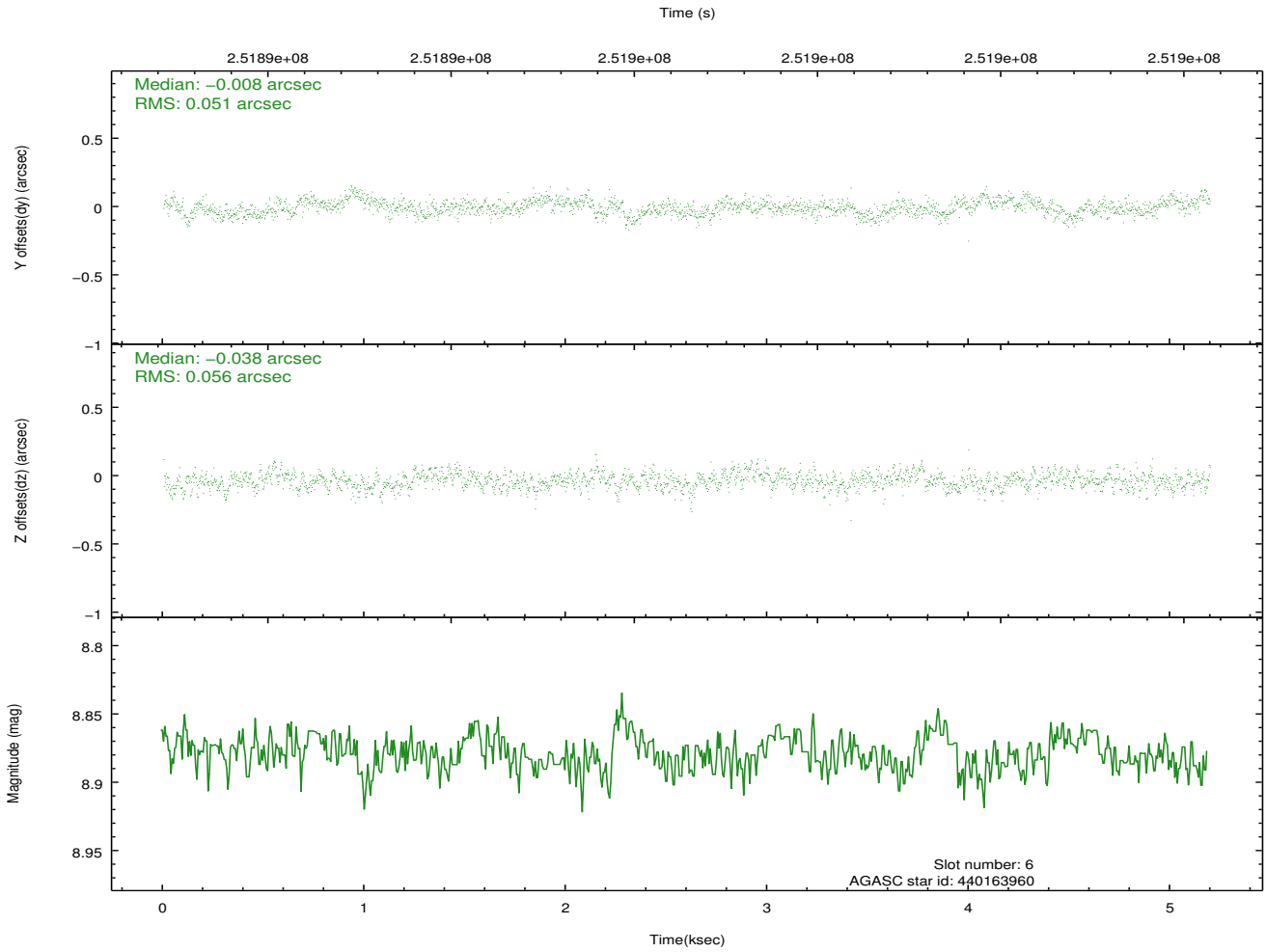
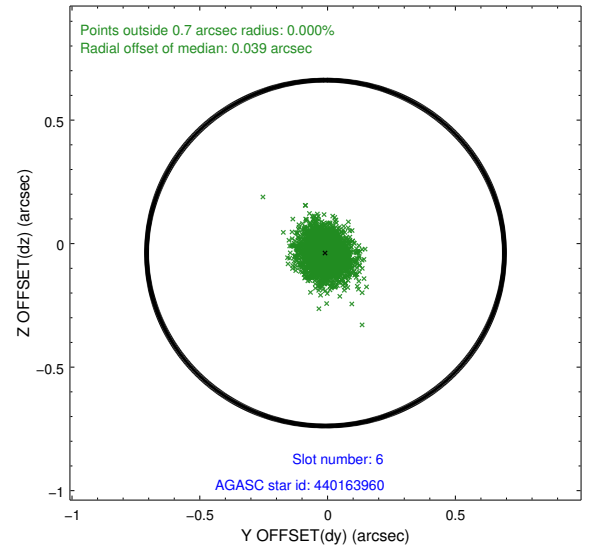
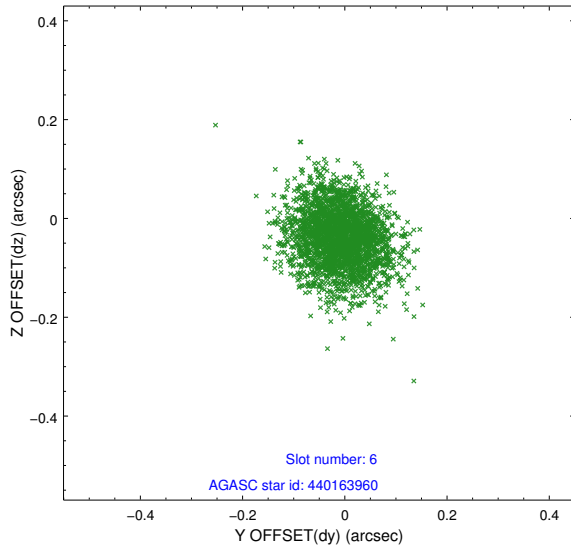
2.4.2 Slot 4



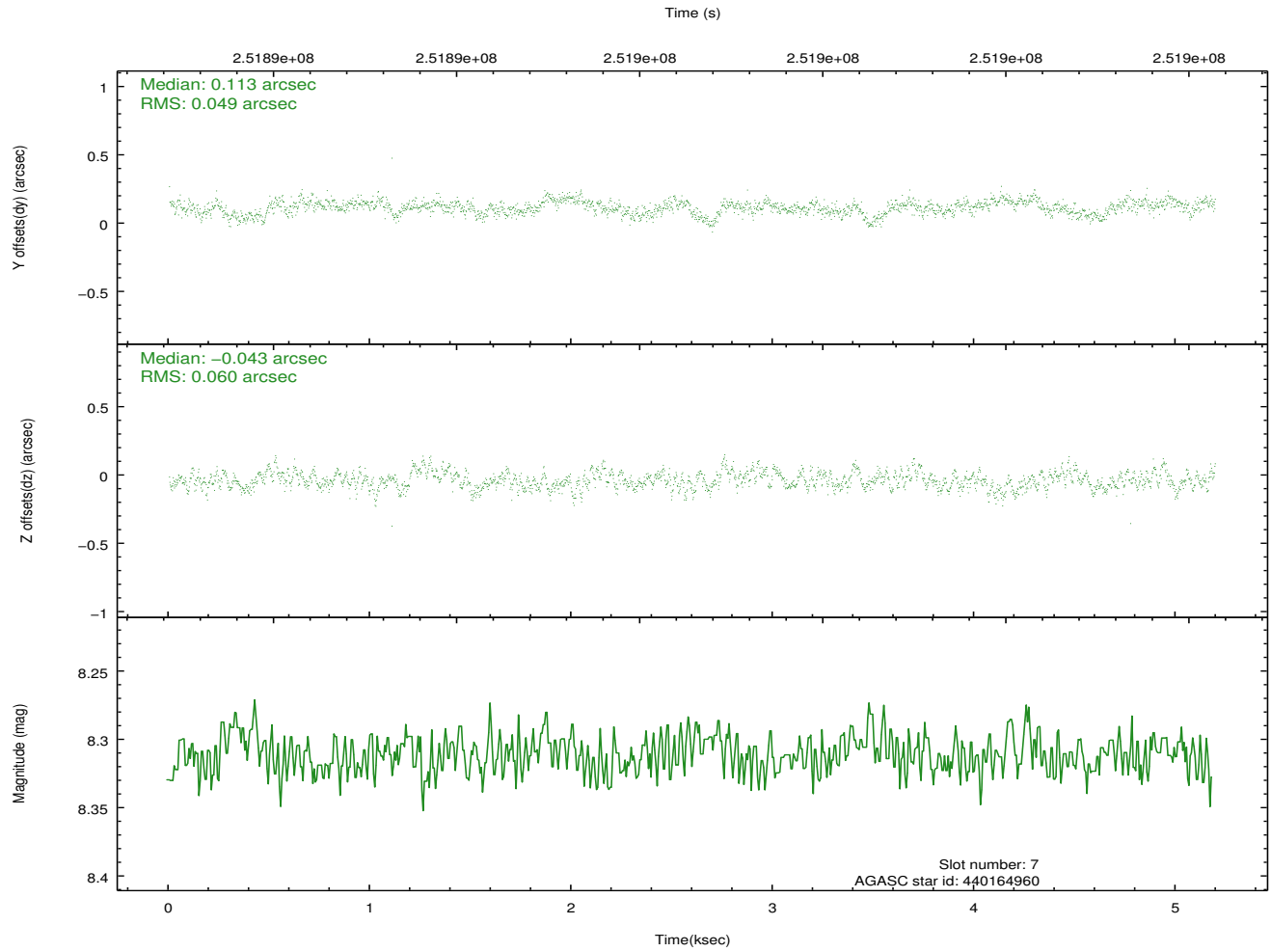
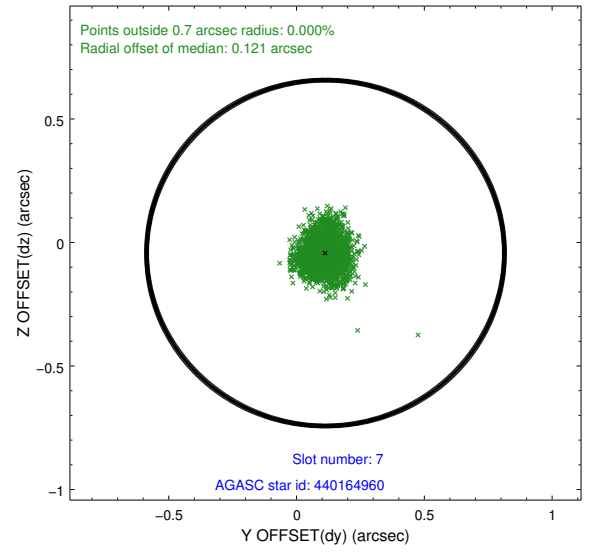
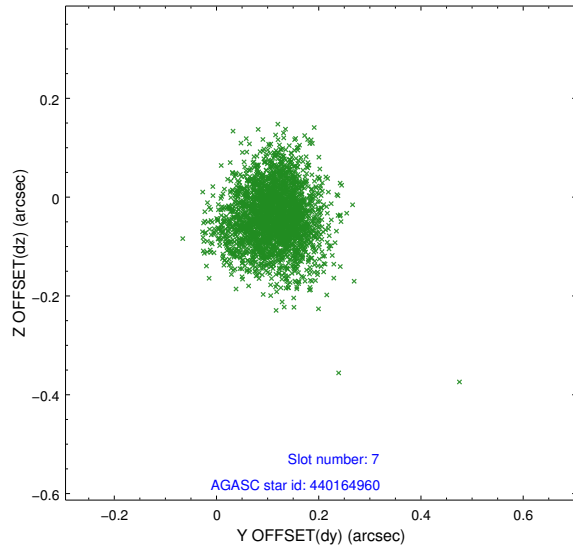
2.4.3 Slot 5



2.4.4 Slot 6

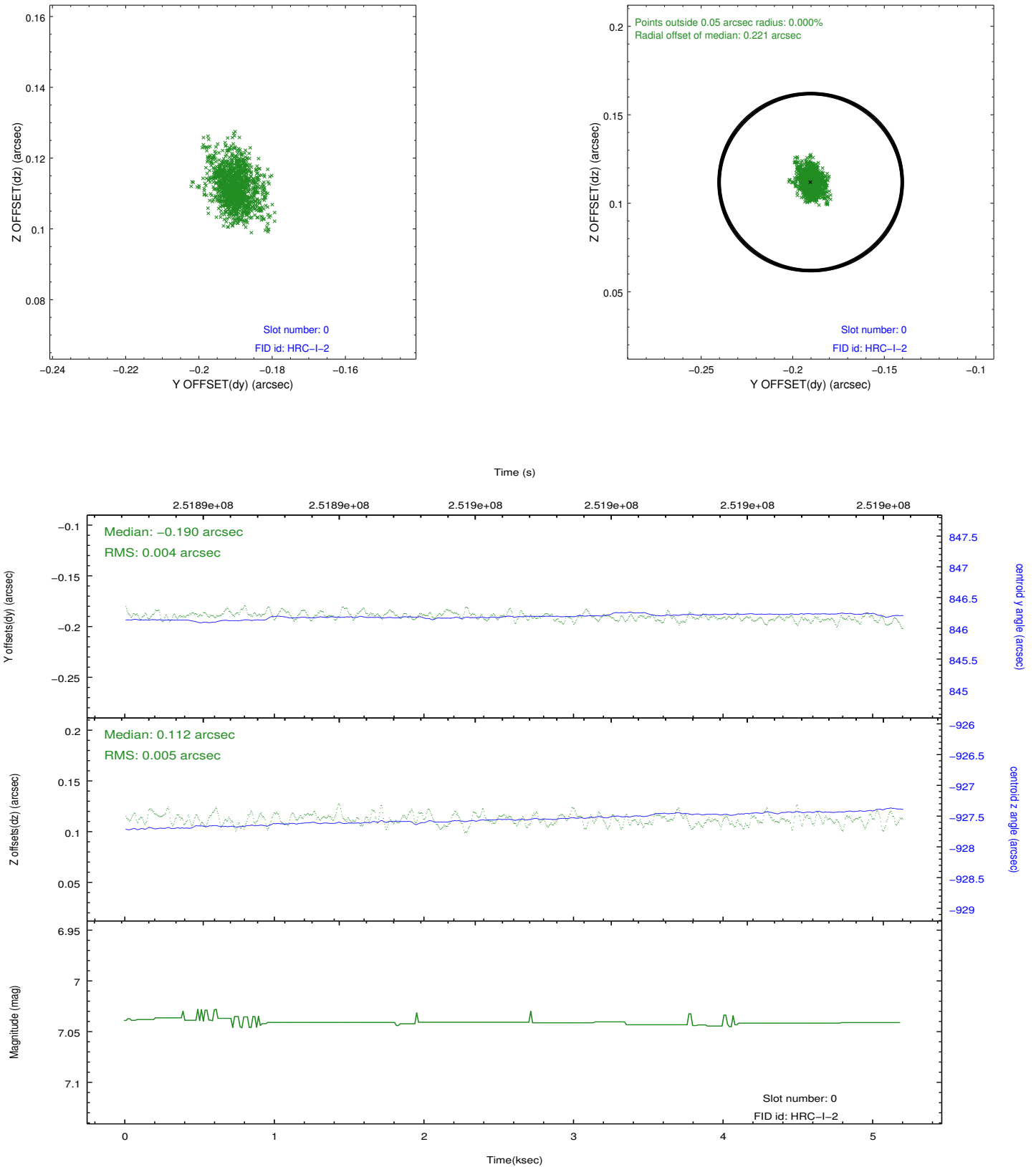


2.4.5 Slot 7

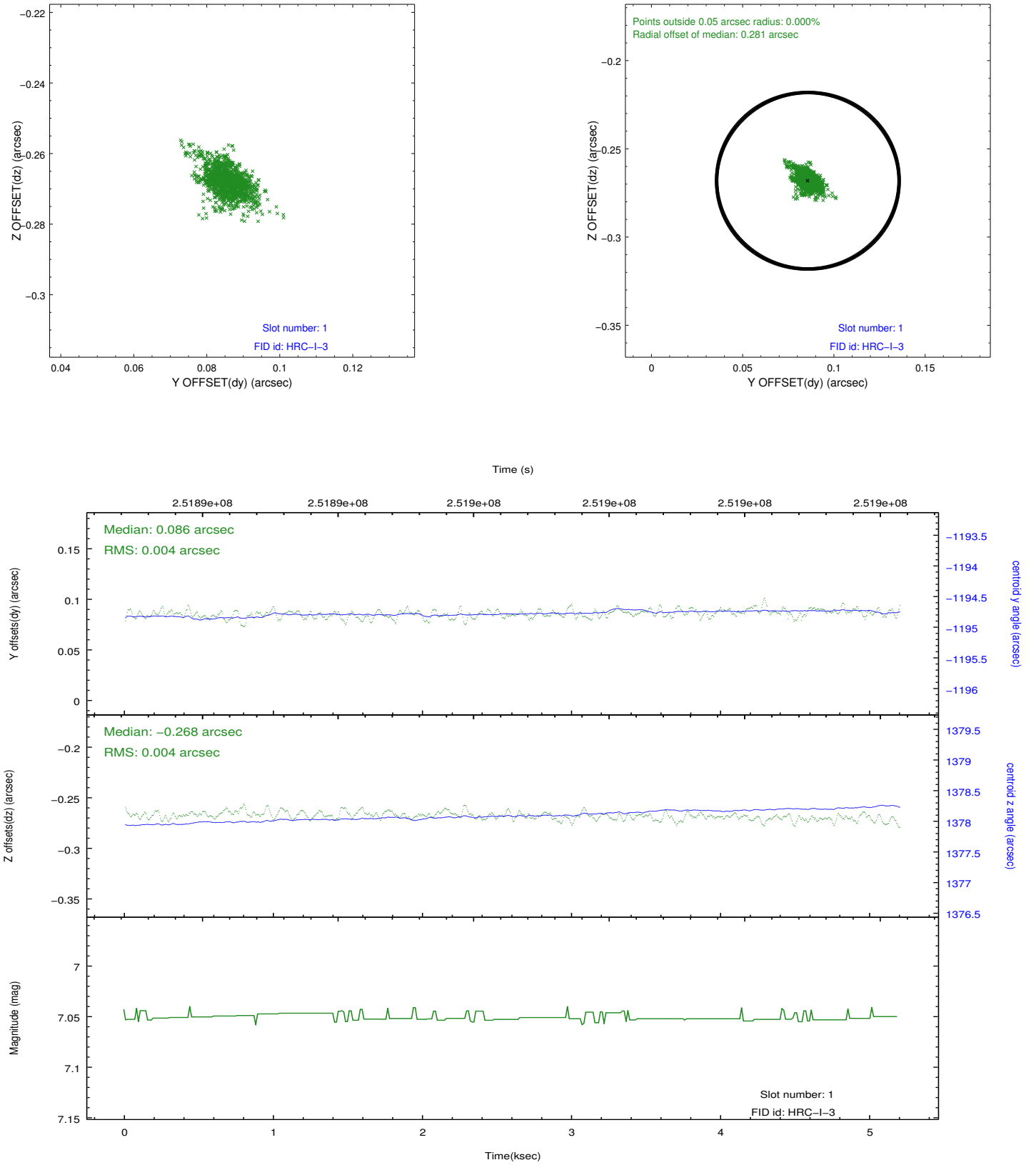


2.5 FID Slots

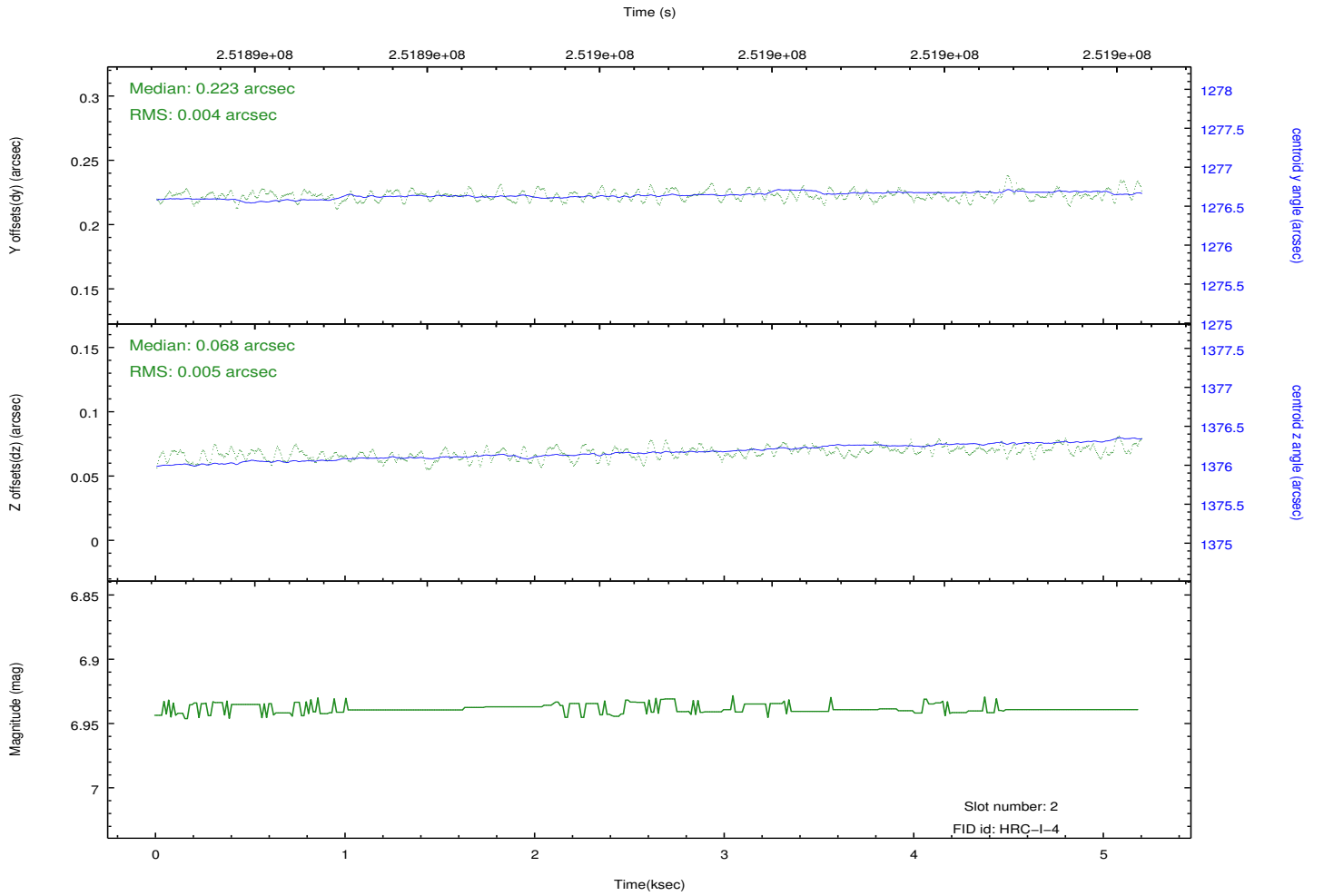
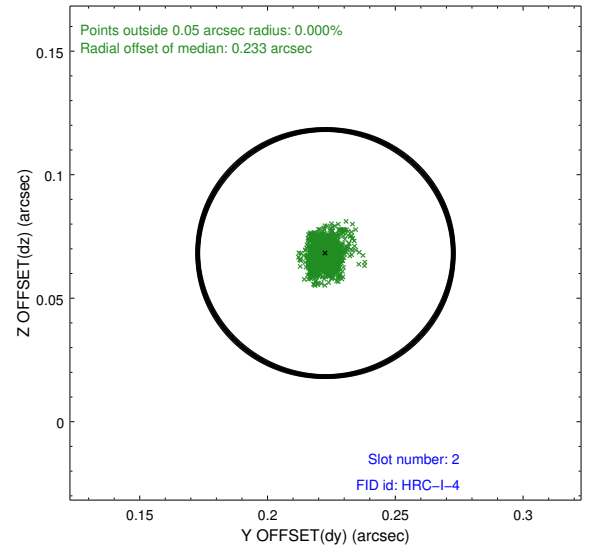
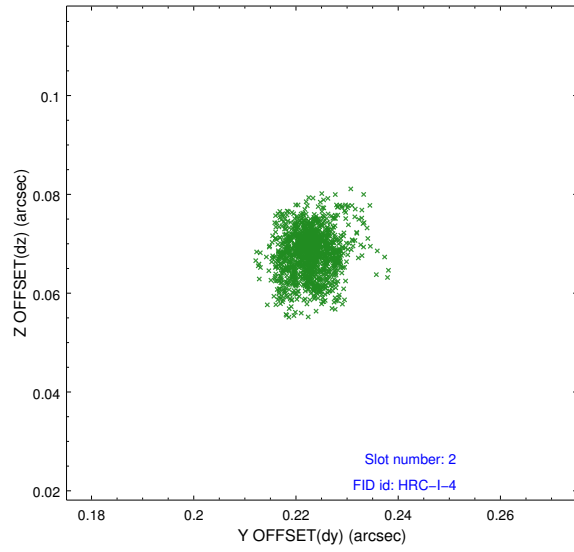
2.5.1 Slot 0



2.5.2 Slot 1



2.5.3 Slot 2



A Summary

A.1 Status

V&V Scientist	Jen Lauer
V&V Date (YYYY-MM-DD)	2012.08.12
V&V Edition	1
V&V Disposition and Status	OK
V&V Charge Time	5.193931

A.2 Comments