

V&V Reference Report

L2 ASCDS Version : 8.5.1.1

Observation 6362 - L2 Version 3
Chandra X-Ray Center

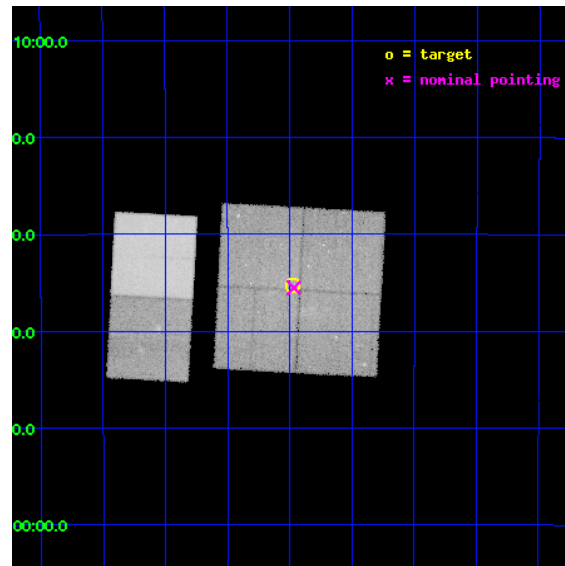
L2 Processing Date : Dec 27 2012

Contents

1	Front	2
2	OBI	3
2.1	OBI	3
2.1.1	Images	3
2.1.2	Bias	3
2.1.3	Parameters	4
2.1.4	Events	4
2.2	Compared Parameters	5
2.3	Aspect	6
2.4	Star Slots	9
2.4.1	Slot 3	9
2.4.2	Slot 4	10
2.4.3	Slot 5	11
2.4.4	Slot 6	12
2.4.5	Slot 7	13
2.5	FID Slots	14
2.5.1	Slot 0	14
2.5.2	Slot 1	15
2.5.3	Slot 2	16
A	Summary	17
A.1	Status	17
A.2	Comments	17

1 Front

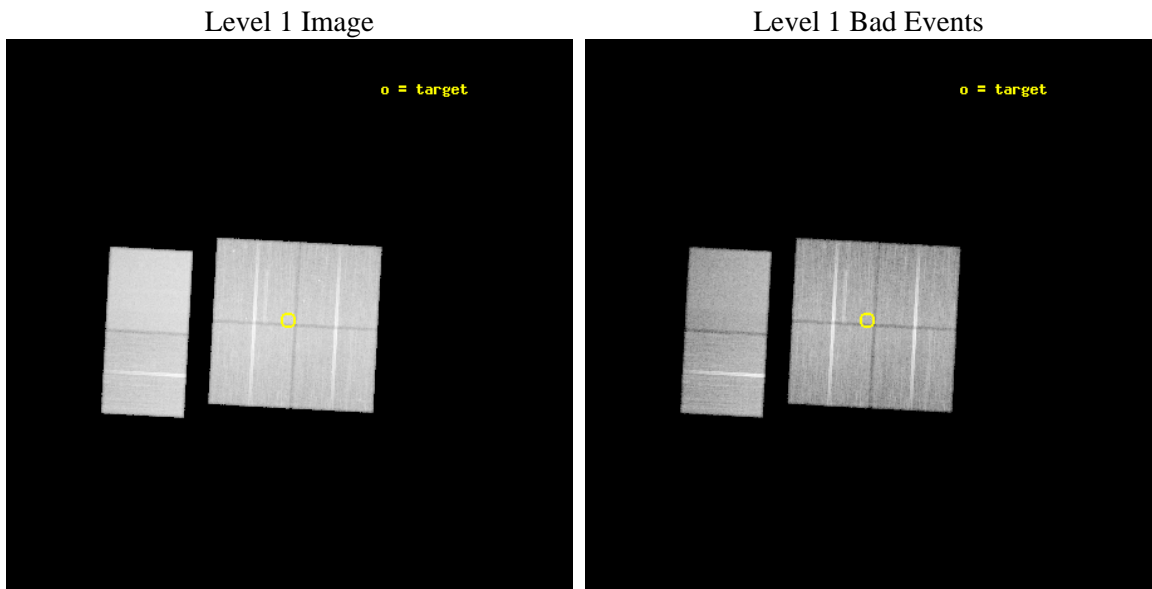
seq_num	600453	Sequence number
obs_id	6362	Observation id
title	Galactic Bulge Chandra-HST Survey	Proposal title
observer	Professor Johnathan Grindlay	Principal investigator
object	Limiting Window	Source name
dtcycle	0	
cycle	P	events from which exps? Prim/Second/Both
ra_targ	267.86875	Observer's specified target RA [deg]
dec_targ	-29.588	Observer's specified target Dec [deg]
ra_nom	267.86694319976	Nominal RA [deg]
dec_nom	-29.592382285597	Nominal Dec [deg]
roll_nom	273.11314102876	Nominal Roll [deg]
revision	3	Processing version of data
ontime	38179.199857771	Sum of GTIs [s]
livetime	37695.751840418	Livetime [s]
ontime0	38172.717897177	Sum of GTIs [s]
ontime1	38179.199857771	Sum of GTIs [s]
ontime2	38179.199857771	Sum of GTIs [s]
ontime3	38179.199857771	Sum of GTIs [s]
ontime6	38179.199857771	Sum of GTIs [s]
ontime7	38179.199857771	Sum of GTIs [s]
l2events	391935	Number of level 2 events



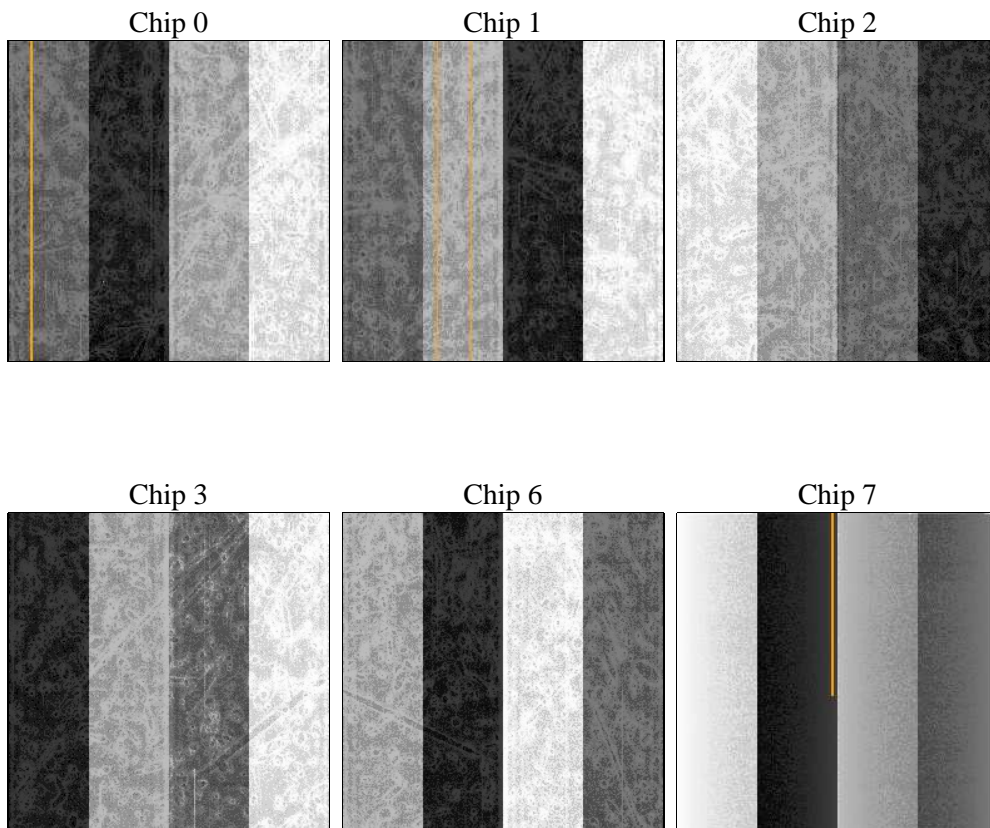
2 OBI

2.1 OBI

2.1.1 Images



2.1.2 Bias



2.1.3 Parameters

obi_num	0	Obi number	sched_exp_time	38000.000000	[s] Scheduled observation exposure time
ascdsver	8.5.1.1	Processing system revision	ontime	38179.199857771	Sum of GTIs [s]
caldsver	4.5.5	 	ontime0	38172.717897177	Sum of GTIs [s]
date	2012-12-27T22:43:00	Date and time of file creation	ontime1	38179.199857771	Sum of GTIs [s]
revision	3	Processing version of data	ontime2	38179.199857771	Sum of GTIs [s]
			ontime3	38179.199857771	Sum of GTIs [s]
			ontime6	38179.199857771	Sum of GTIs [s]
			ontime7	38179.199857771	Sum of GTIs [s]
			l1events	1954824	Number of level 1 events

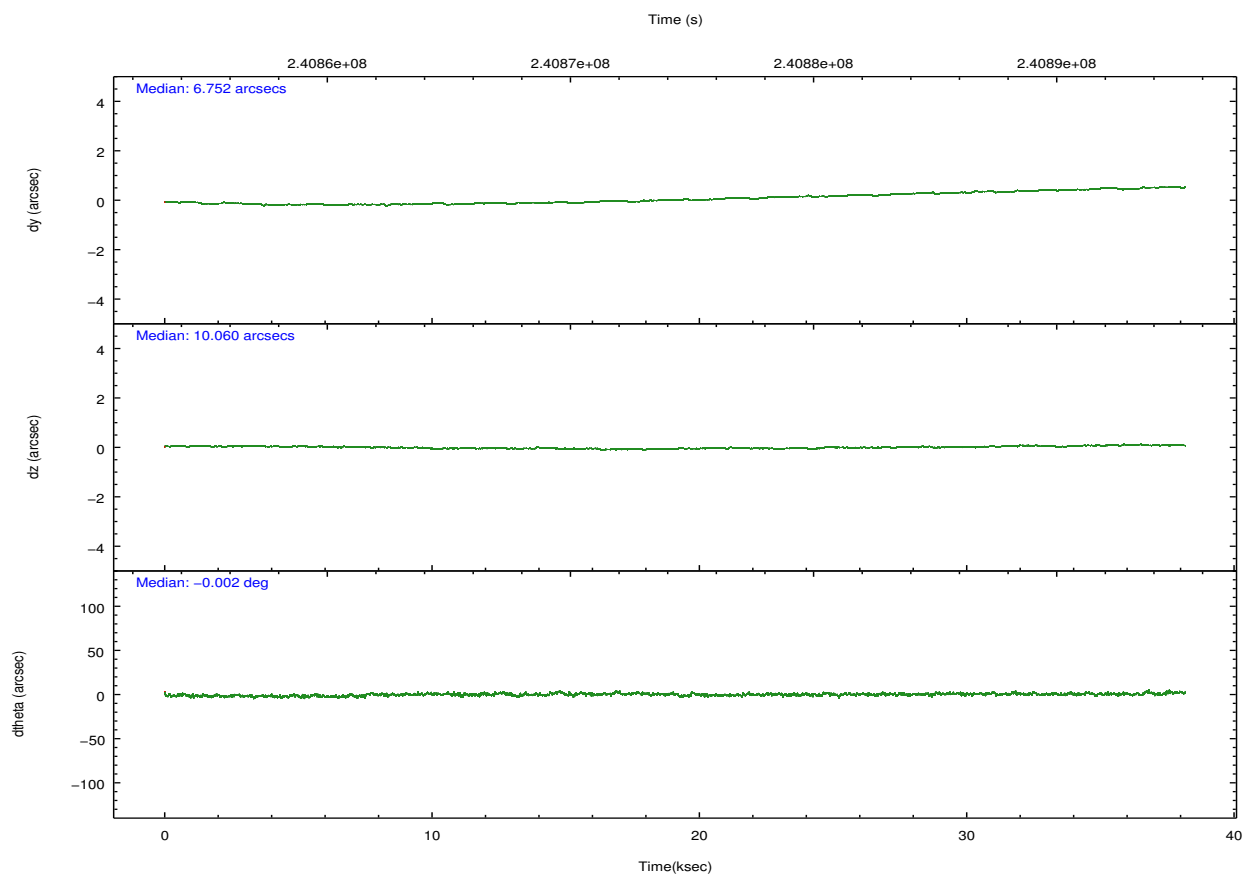
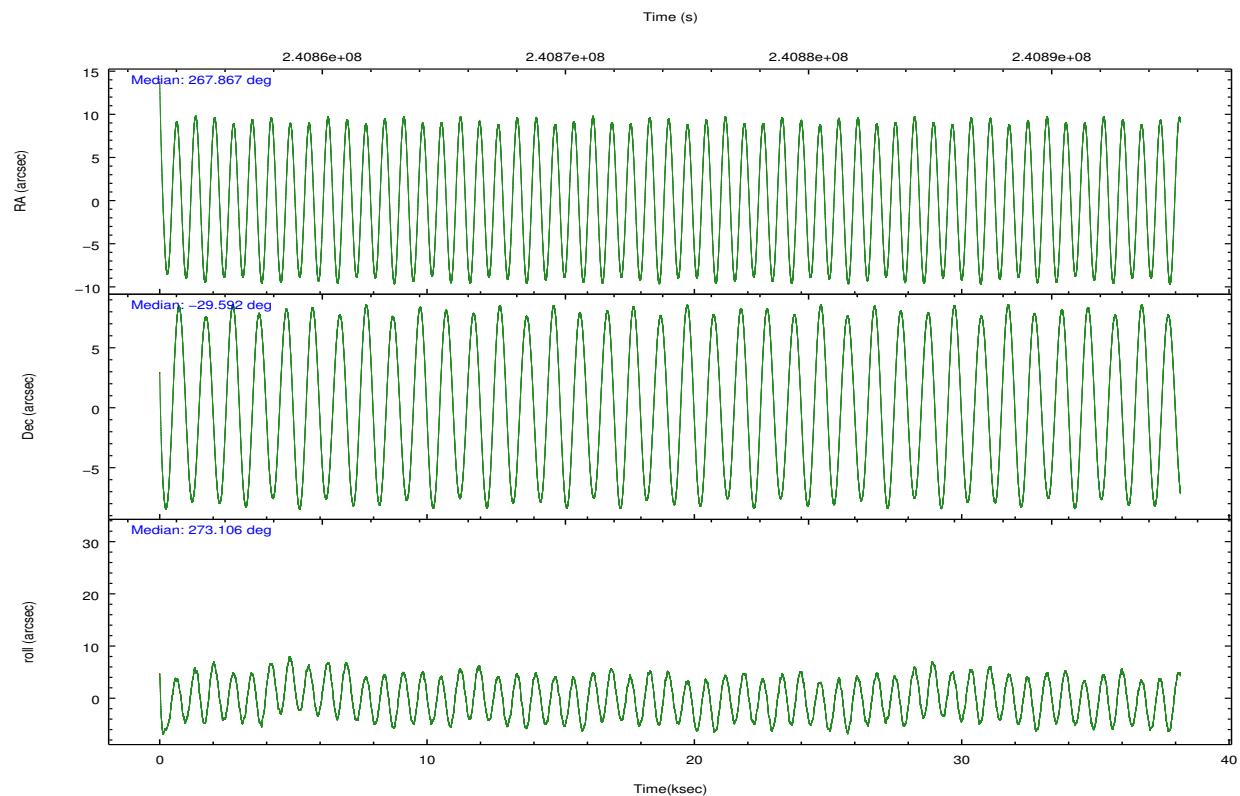
2.1.4 Events

	ccd 0	ccd 1	ccd 2	ccd 3	ccd 6	ccd 7		ccd 0	ccd 1	ccd 2	ccd 3	ccd 6	ccd 7
level 1 events	289113	293514	315388	312847	322828	421134	grade 0 events	28088	26458	30142	27902	24460	18608
rejected events	239140	242665	264161	264046	275377	245358		9%	9%	9%	8%	7%	4%
rejected %	82%	82%	83%	84%	85%	58%	grade 1 events	218	193	239	256	170	429
								0%	0%	0%	0%	0%	0%
							grade 2 events	9127	10066	8579	8094	9023	37099
								3%	3%	2%	2%	2%	8%
							grade 3 events	3994	3943	3818	3704	3785	16307
								1%	1%	1%	1%	1%	3%
							grade 4 events	3715	3905	3802	3764	3745	15976
								1%	1%	1%	1%	1%	3%
							grade 5 events	11762	12821	11644	13718	14050	38957
								4%	4%	3%	4%	4%	9%
							grade 6 events	6389	7783	6174	6611	7731	93598
								2%	2%	1%	2%	2%	22%
							grade 7 events	225820	228345	250990	248798	259864	200160
								78%	77%	79%	79%	80%	47%

2.2 Compared Parameters

Parameter	Planned	Actual	Parameter	Planned	Actual
Instrument	ACIS	ACIS	Obspar format version number	7	7
Detector	ACIS-012367	ACIS-012367	Obspar file type	PREDICTED	ACTUAL
Grating	NONE	NONE	Obspar update status	NONE	UPDATED
Data mode	FAINT	FAINT	Number of optional ACIS chips dropped	0	0
Observation mode	POINTING	POINTING	On-chip summing requested	N	N
[deg] Pointing RA	267.849628	267.8669431997578	Subarray requested	NONE	NONE
[deg] Pointing Dec	-29.569487	-29.59238228559654	Alternating exposures requested	N	N
[deg] Pointing Roll	272.895903	273.1131410287584	[s] Primary exposure time	0.000000	3.2
[mm] SIM focus pos	-0.782348	-0.7809083437167272			
[mm] SIM defocus	0	0.001439871863259334			
[mm] SIM translation stage pos	-233.592463	-233.5874344608287			
[mm] SIM translation stage offset	0	-0.005018542100998502			
[s] Observation start time (MET)	240855400.184000	240853682.79344			
Observation start date	2005-08-19T16:15:36	2005-08-19T15:48:02			
[s] Observation end time (MET)	240893400.184000	240893870.99528			
Observation end date	2005-08-20T02:48:56	2005-08-20T02:57:50			
Read mode	TIMED	TIMED			

2.3 Aspect

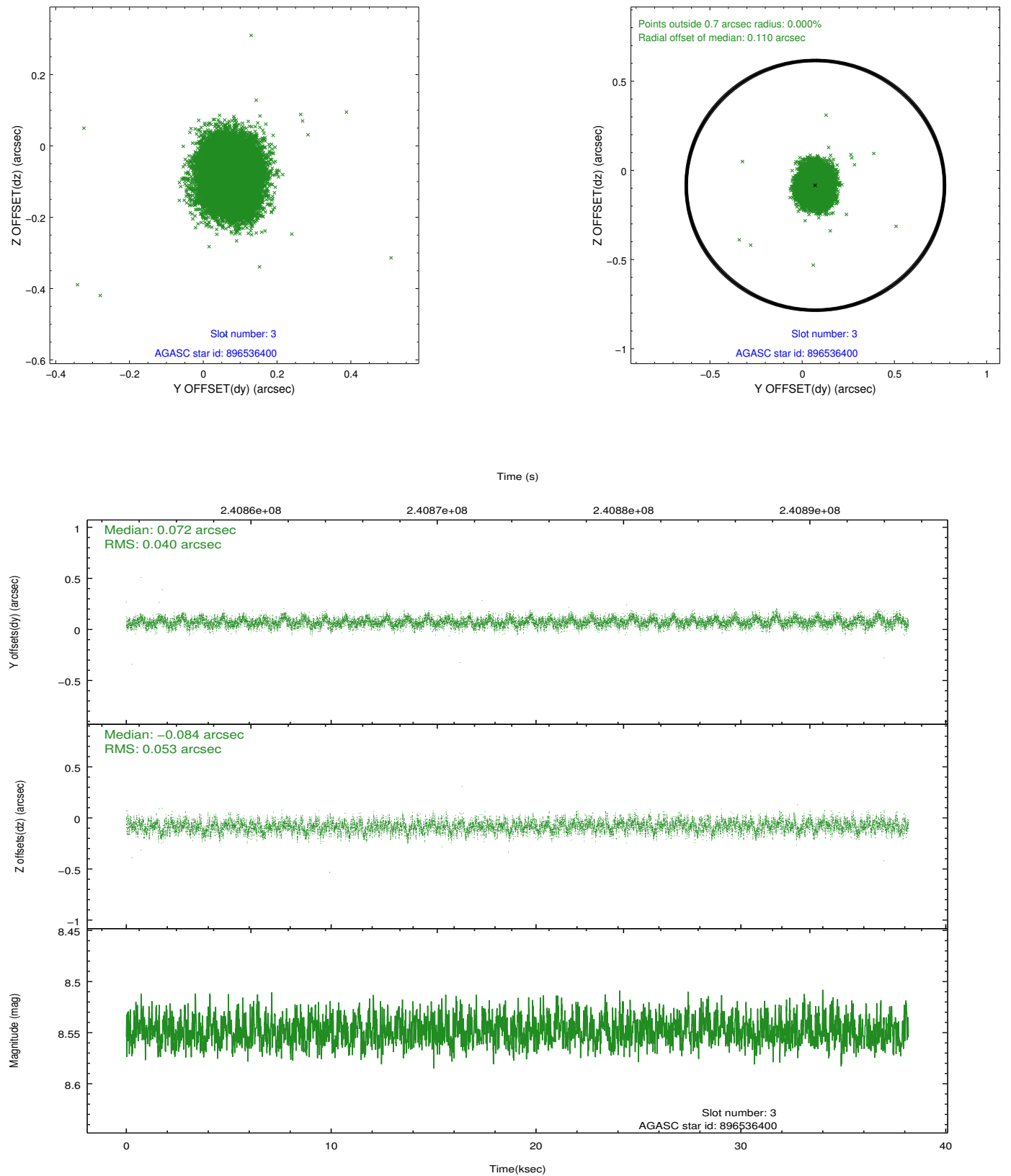


Slot Statistics

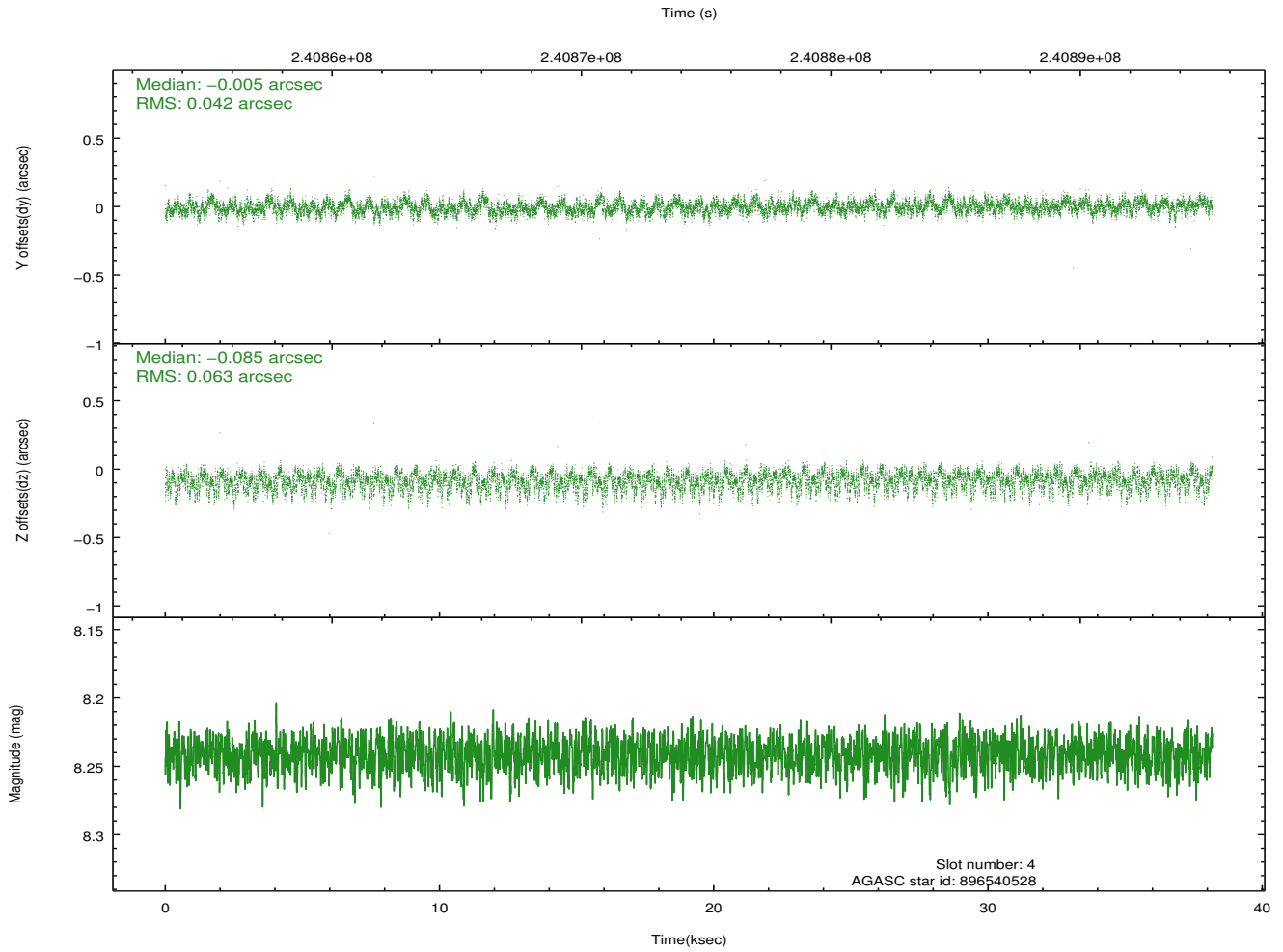
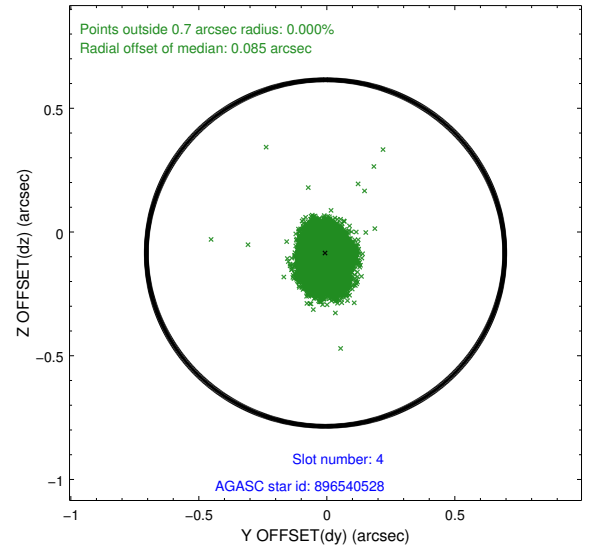
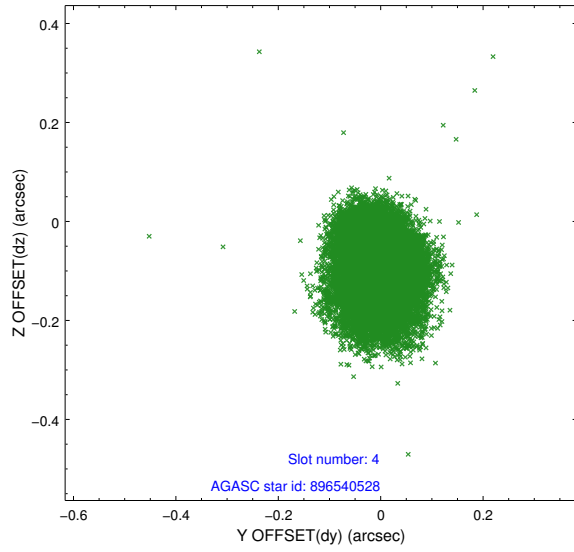
slot	status	id	mag	n_pts	med_dy	med_dz	dr1	dr2	ra	dec	mean_y	mean_z
0	FID	ACIS-I-1	7.25	9313	-0.059	0.059	0.014	0.023	0.000000	0.000000	932.80	-833.48
1	FID	ACIS-I-2	7.14	9314	-0.120	-0.069	0.011	0.017	0.000000	0.000000	-761.34	-840.05
2	FID	ACIS-I-4	7.18	9313	0.079	0.077	0.010	0.017	0.000000	0.000000	2152.82	1066.32
3	GUIDE	896536400	8.55	18624	0.072	-0.084	0.070	0.113	267.359146	-29.438655	-544.18	-1512.10
4	GUIDE	896540528	8.24	18621	-0.005	-0.085	0.080	0.130	267.368305	-29.314773	-988.37	-1462.63
5	GUIDE	896543792	9.82	18605	0.051	0.035	0.131	0.216	267.148052	-29.957989	1293.64	-2256.14
6	GUIDE	898247688	8.67	18615	-0.128	0.254	0.082	0.130	268.426687	-29.012154	-1907.49	1915.73
7	GUIDE	898248800	8.22	18623	0.008	-0.119	0.061	0.097	267.977609	-29.931731	1323.10	333.23

2.4 Star Slots

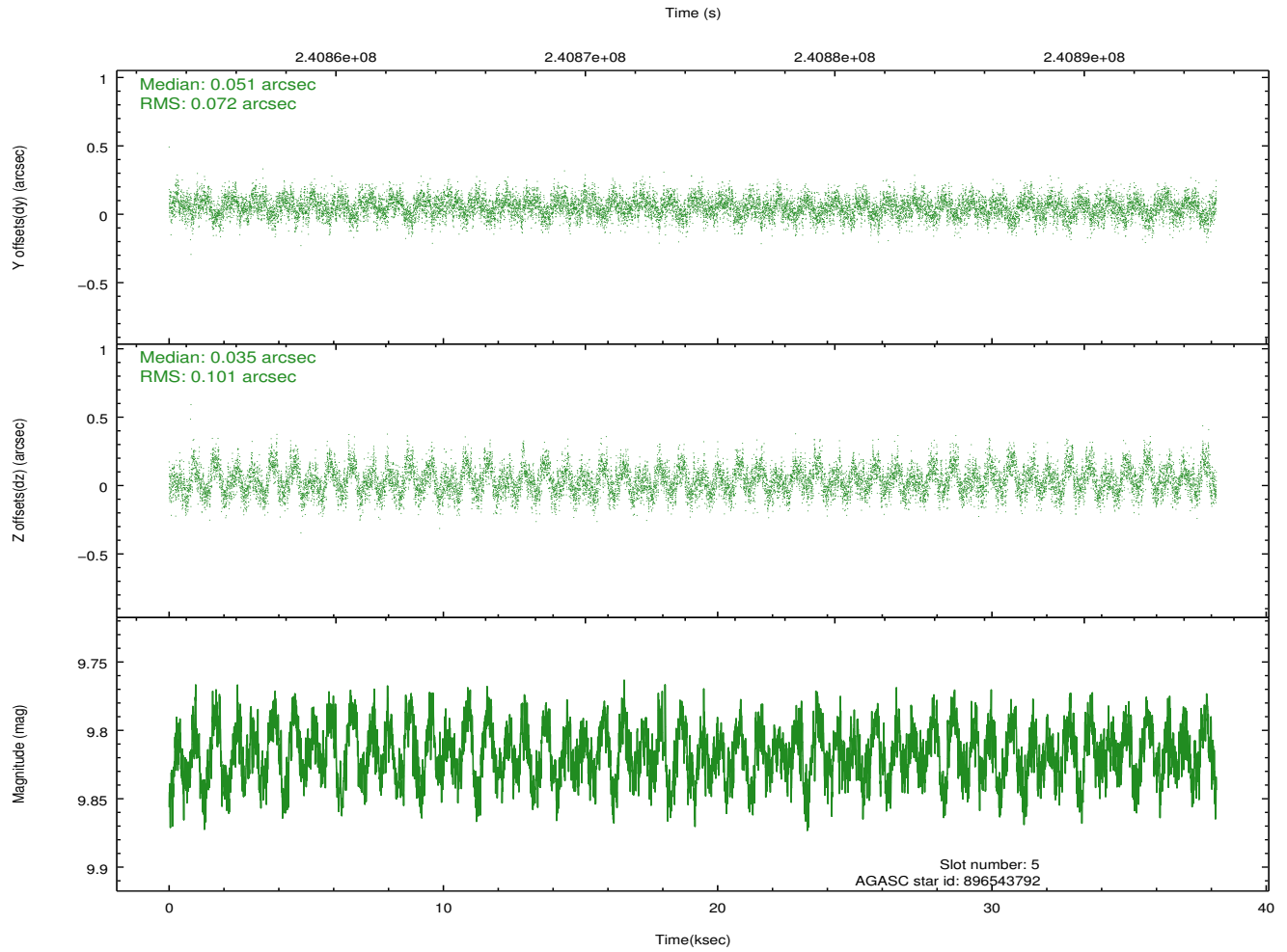
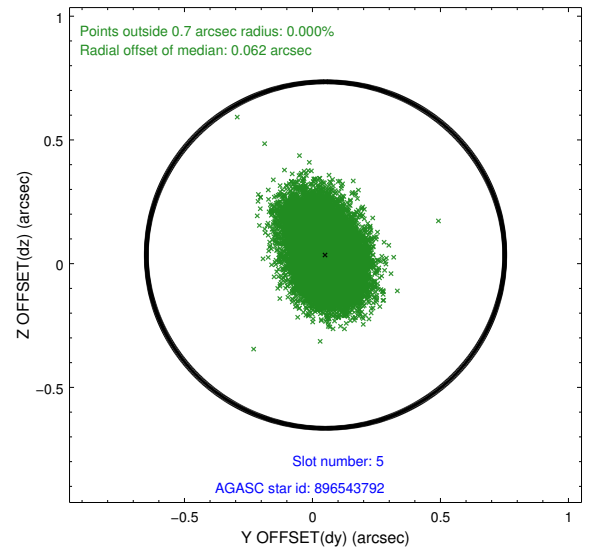
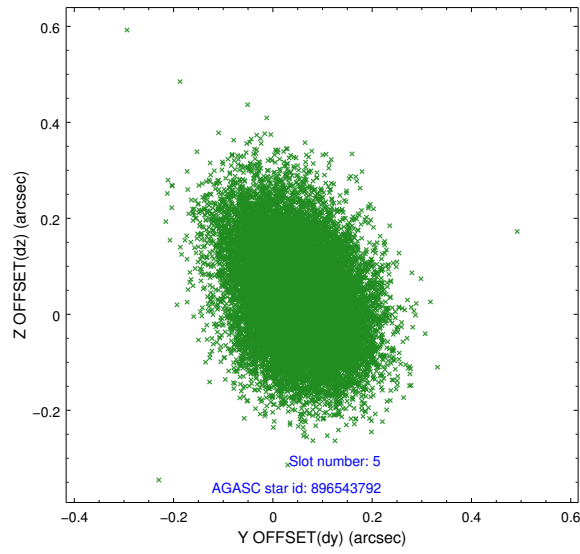
2.4.1 Slot 3



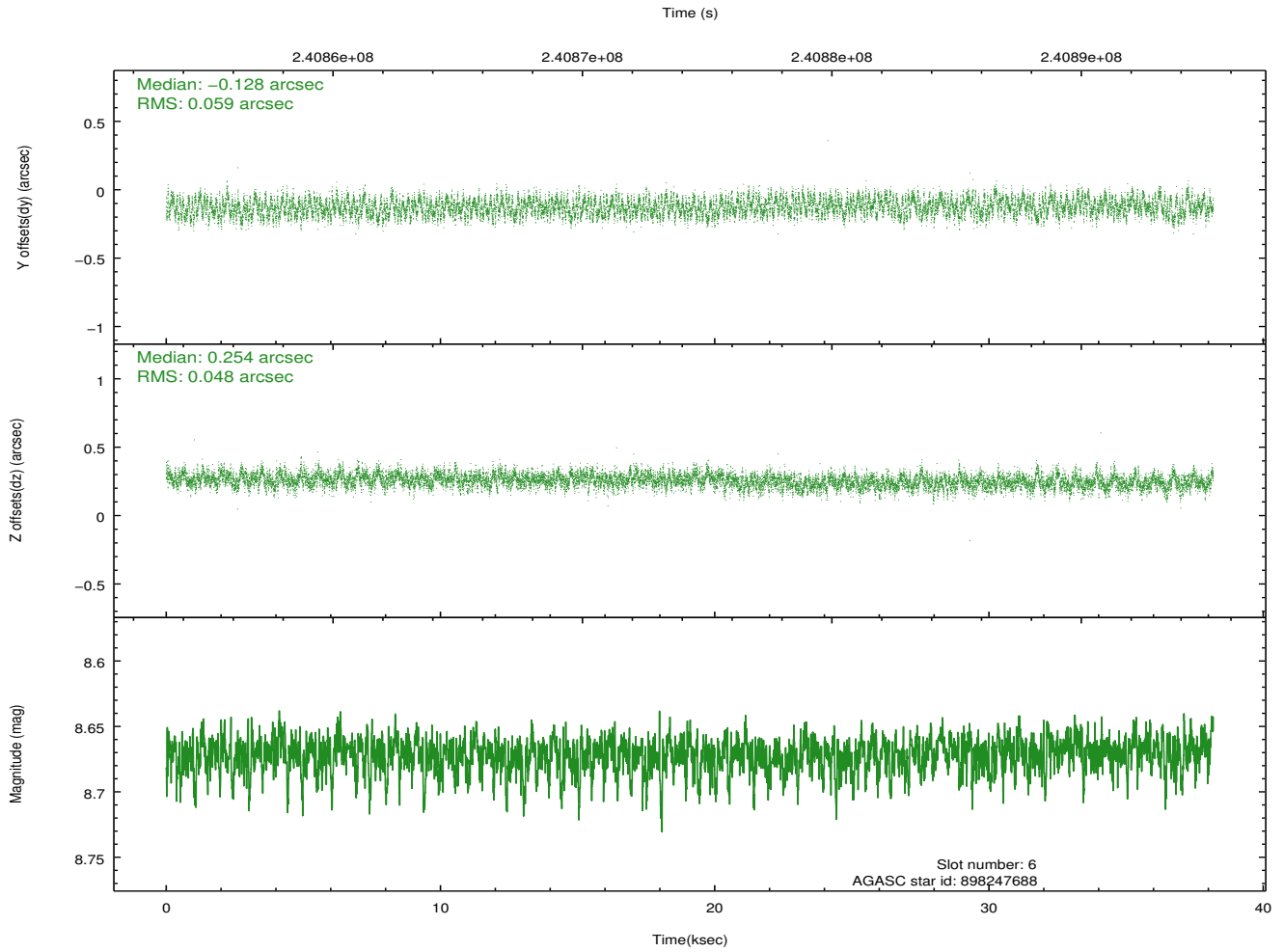
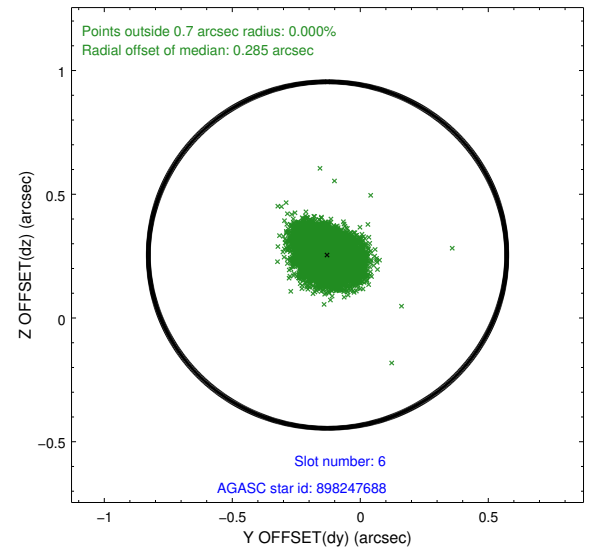
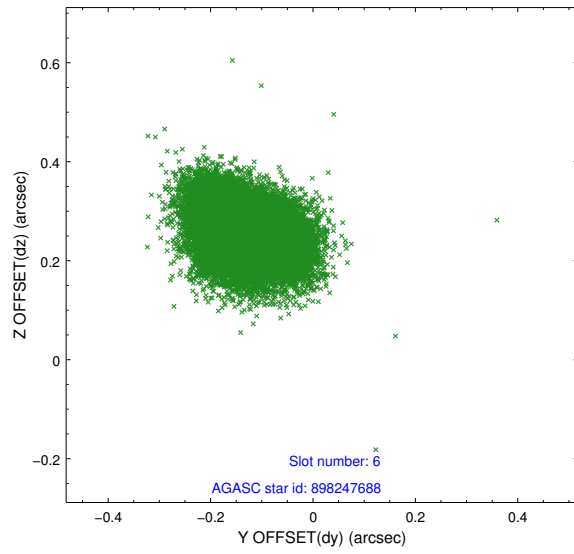
2.4.2 Slot 4



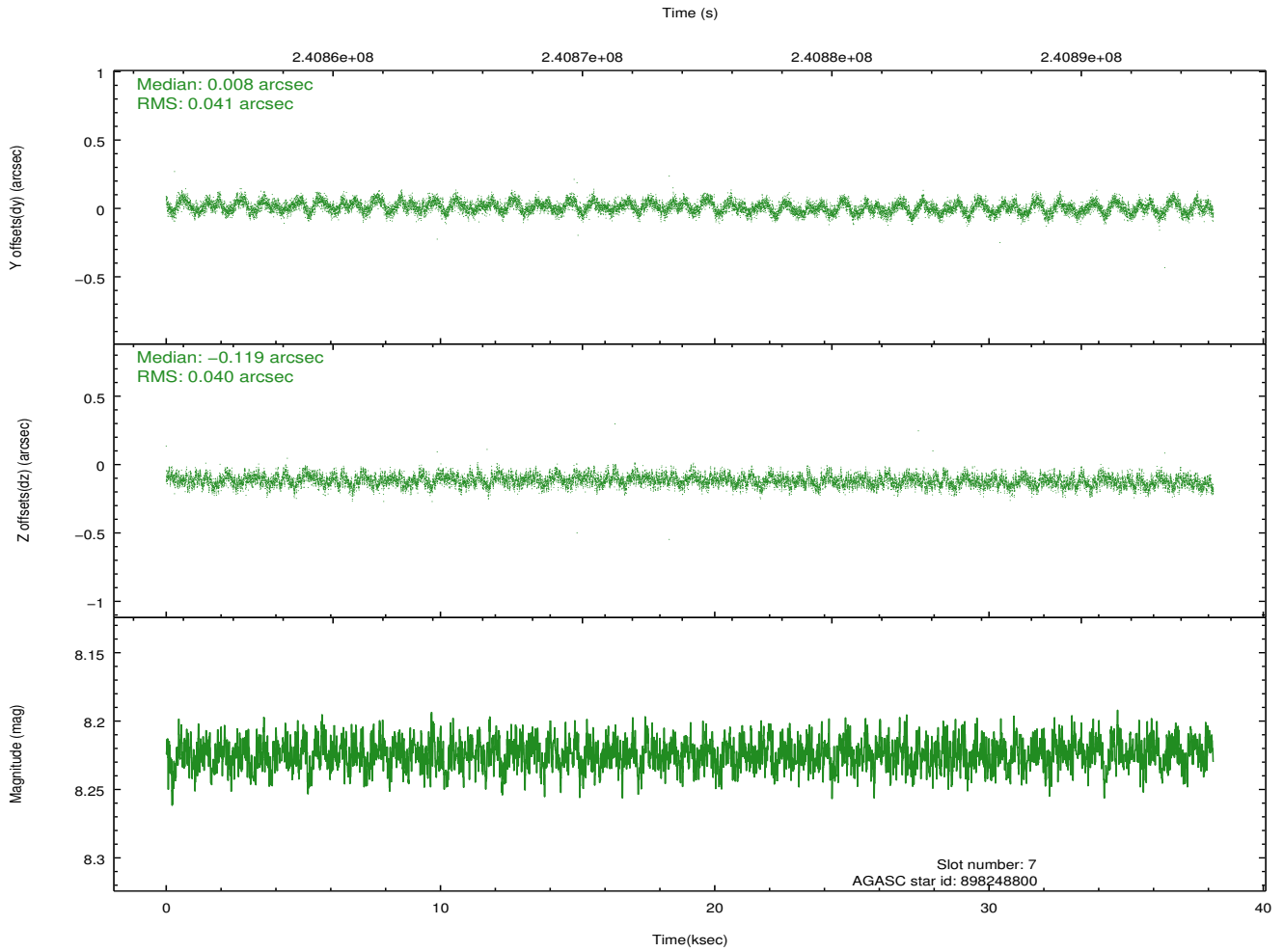
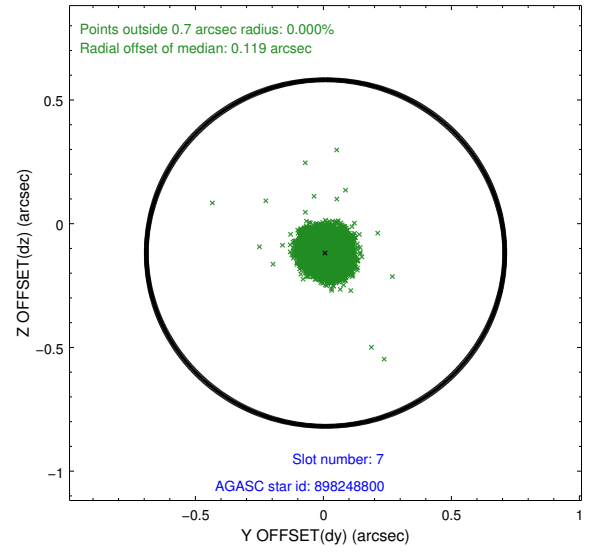
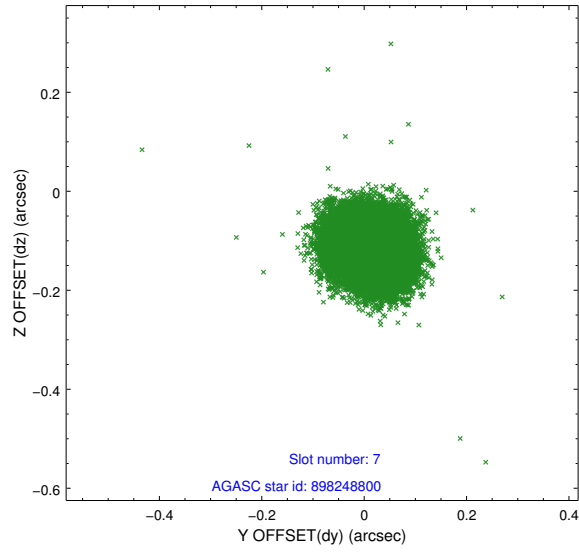
2.4.3 Slot 5



2.4.4 Slot 6

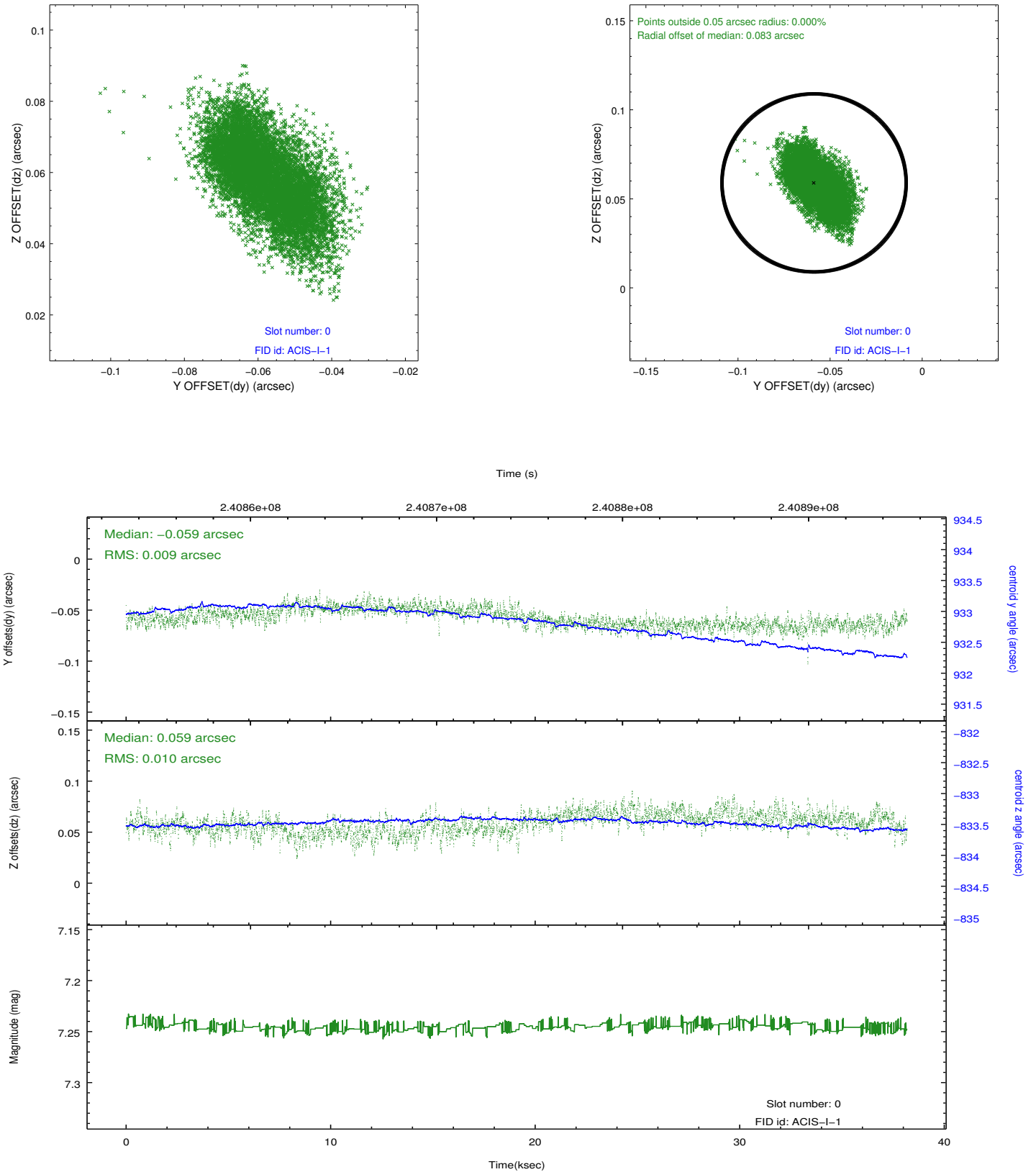


2.4.5 Slot 7

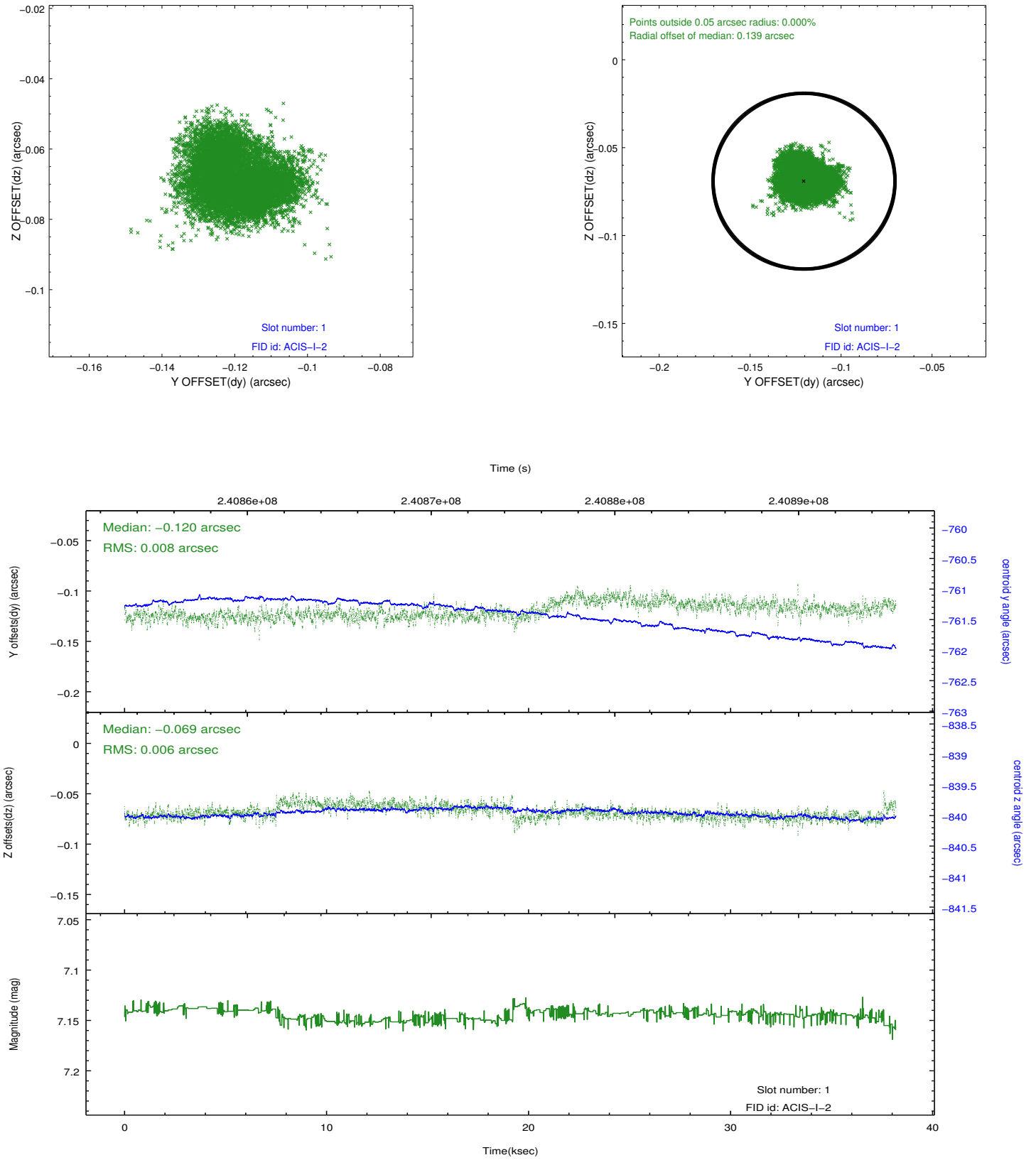


2.5 FID Slots

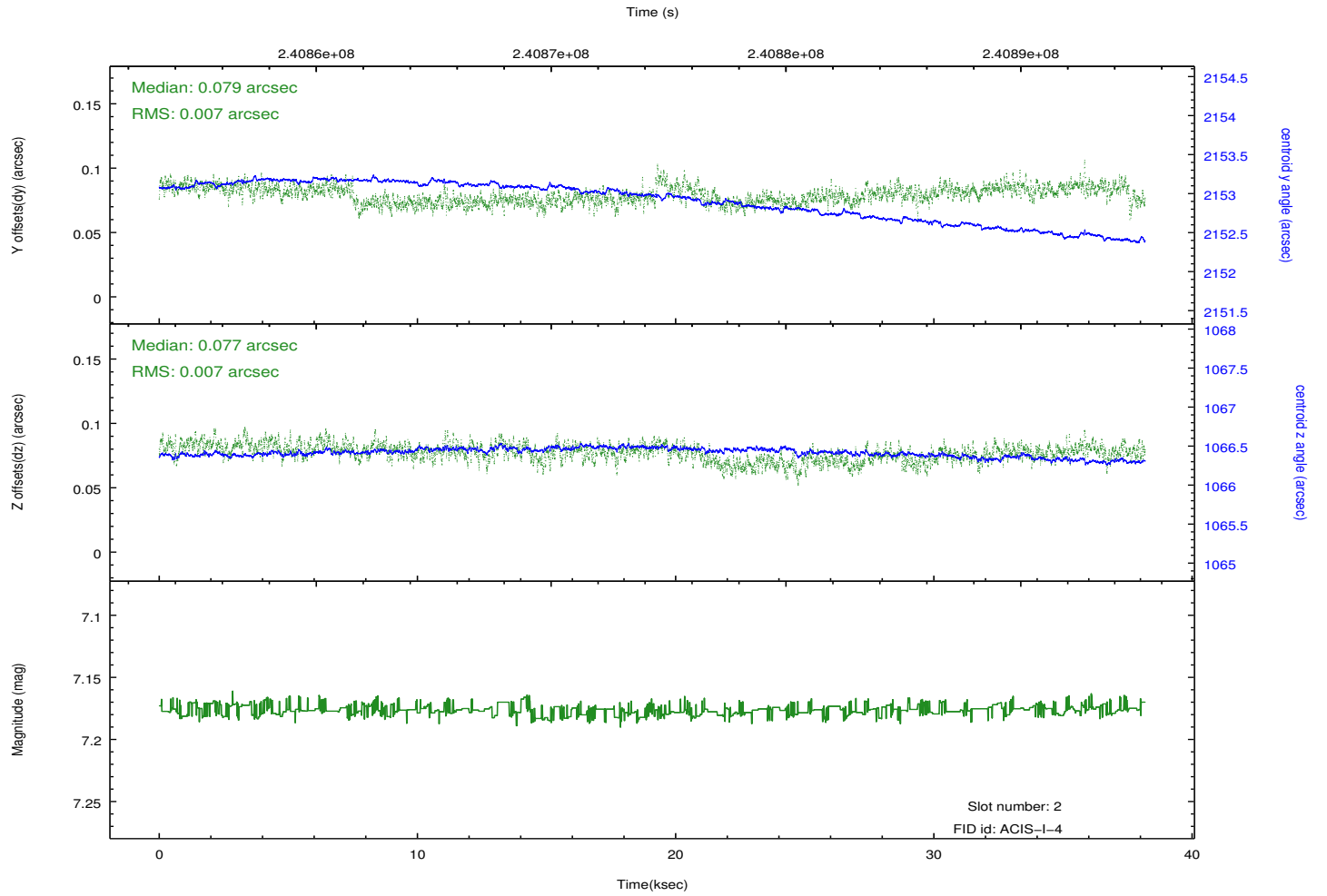
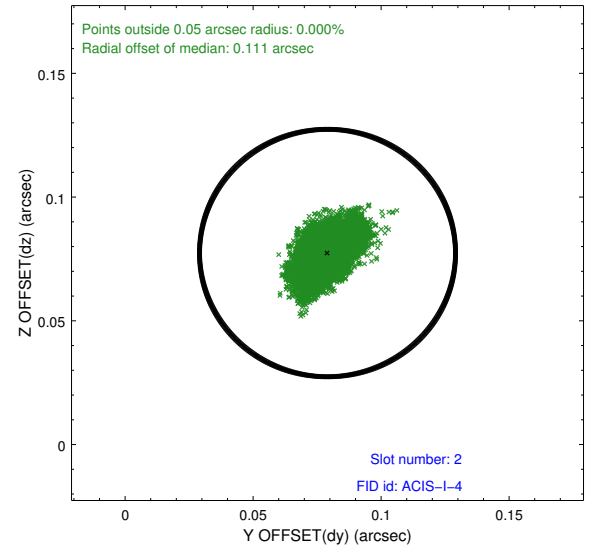
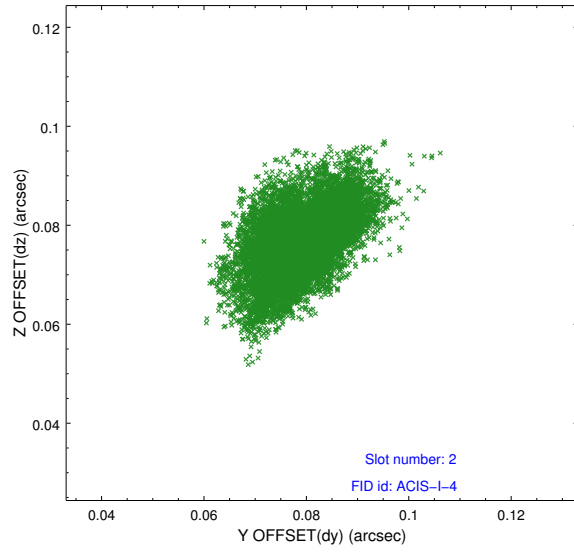
2.5.1 Slot 0



2.5.2 Slot 1



2.5.3 Slot 2



A Summary

A.1 Status

V&V Scientist	Jen Lauer
V&V Date (YYYY-MM-DD)	2013.01.24
V&V Edition	1
V&V Disposition and Status	OK
V&V Charge Time	38.17919

A.2 Comments

Joint Proposal: HST