

V&V Reference Report

L2 ASCDS Version : 7.6.8.1

Observation 62852 - L2 Version 001
Chandra X-Ray Center

L2 Processing Date : Sep 8 2006

Contents

1	Front	2
2	OBI	3
2.1	OBI	3
2.1.1	Images	3
2.1.2	Bias	3
2.1.3	Parameters	4
2.1.4	Events	4
2.2	Compared Parameters	5
2.3	Aspect	6
2.4	Star Slots	8
2.5	FID Slots	8
A	Summary	9
A.1	Status	9
A.2	Comments	9

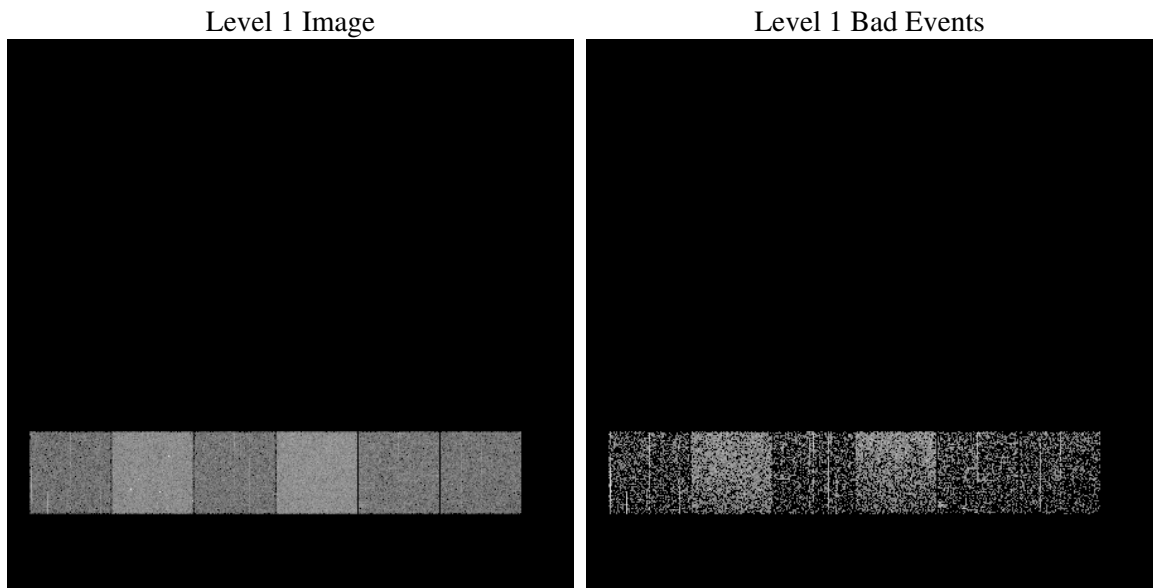
1 Front

seq_num	
obs_id	62852
title	ACIS-456789 diagnostics
observer	CHANDRA engineering request/realtime commanding
object	
dtcycle	0
cycle	P
ra_targ	0.0
dec_targ	0.0
ra_nom	118.01106365341
dec_nom	22.973257105073
roll_nom	258.05298584006
revision	2
ontime	760.30025807023
livetime	750.67287840469
ontime4	358.54079537094
ontime5	779.7871196419
ontime6	371.46396517754
ontime7	760.30025807023
ontime8	384.51008556783
ontime9	374.5818054378
l2events	150509

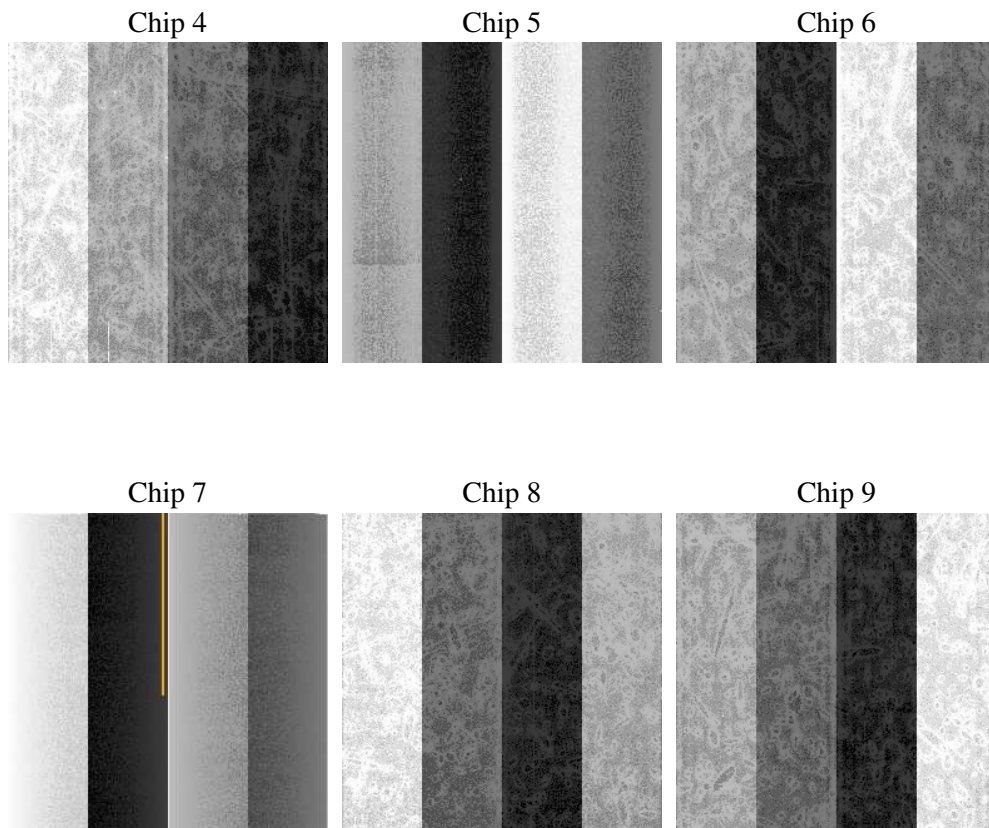
2 OBI

2.1 OBI

2.1.1 Images



2.1.2 Bias



2.1.3 Parameters

obi_num	0
ascdsver	7.6.8.1
caldbver	3.2.3
date	2006-09-08T05:08:56
revision	2

sched_exp_time	0.0
ontime	761.63584987819
ontime4	359.7532671839
ontime5	781.08167144656
ontime6	372.7174769938
ontime7	761.63584987819
ontime8	385.6815173775
ontime9	375.95843724906
l1events	183532

2.1.4 Events

	ccd 4	ccd 5	ccd 6	ccd 7	ccd 8	ccd 9
level 1 events	22033	43564	23658	46815	24819	22643
rejected events	3652	6619	3099	5944	3190	2677
rejected %	16%	15%	13%	12%	12%	11%

	ccd 4	ccd 5	ccd 6	ccd 7	ccd 8	ccd 9
grade 0 events	10359	4958	11257	7521	11725	10921
	47%	11%	47%	16%	47%	48%
grade 1 events	70	23	62	21	68	49
	0%	0%	0%	0%	0%	0%
grade 2 events	3190	17411	3451	12216	3868	3530
	14%	39%	14%	26%	15%	15%
grade 3 events	1204	1246	1262	3097	1392	1255
	5%	2%	5%	6%	5%	5%
grade 4 events	1123	1233	1269	2998	1370	1271
	5%	2%	5%	6%	5%	5%
grade 5 events	181	772	201	774	246	224
	0%	1%	0%	1%	0%	0%
grade 6 events	2505	12097	3320	15039	3274	2989
	11%	27%	14%	32%	13%	13%
grade 7 events	3401	5824	2836	5149	2876	2404
	15%	13%	11%	10%	11%	10%

2.2 Compared Parameters

Parameter	Planned	Actual	Parameter	Planned	Actual
Instrument	ACIS	ACIS	Obspar format version number	6	6
Detector	ACIS-456789	ACIS-456789	Obspar file type	PREDICTED	ACTUAL
Grating	NONE	NONE	Obspar update status	NONE	UPDATED
Data mode	FAINT	FAINT	On-chip summing requested	N	N
Observation mode	SECONDARY	SECONDARY	Subarray requested	NONE	NONE
Pointing RA	0	118.0110636534136	Alternating exposures requested	N	N
Pointing Dec	0	22.97325710507335	Primary exposure time	3.2	3.2
Pointing Roll	0.0	258.0529858400646			
SIM focus pos (mm)	-0.684267	-0.6828225247311905			
SIM defocus (mm)	0	0.8505141146731063			
SIM translation stage pos (mm)	-190.132523	250.466033080201			
SIM translation stage offset (mm)	0	-0.01005468664627074			
Observation start time	132504240.645833	132504239.87737			
Observation start date	2002-03-14T14:44:01	2002-03-14T14:43:59			
Observation end time	132510126.196072	132510125.42761			
Observation end date	2002-03-14T16:22:06	2002-03-14T16:22:05			
Read mode	TIMED	TIMED			

2.3 Aspect

2.4 Star Slots

2.5 FID Slots

A Summary

A.1 Status

V&V Scientist	Jen Lauer
V&V Date (YYYY-MM-DD)	2006.09.08
V&V Edition	1
V&V Disposition and Status	OK
V&V Charge Time	0.76030025

A.2 Comments