

V&V Reference Report

L2 ASCDS Version : 7.6.7

Observation 6282 - L2 Version 002
Chandra X-Ray Center

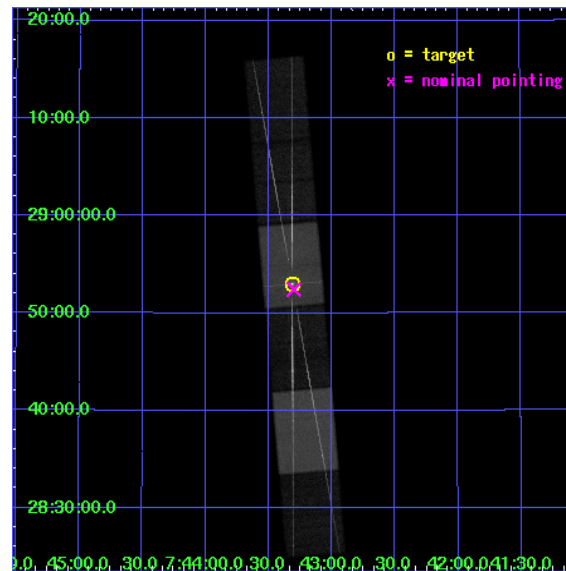
L2 Processing Date: Mar 4 2006

Contents

1	Front	2
2	OBI	3
2.1	OBI	3
2.1.1	Images	3
2.1.2	Bias	3
2.1.3	Parameters	4
2.1.4	Events	4
2.2	Compared Parameters	5
2.3	Aspect	6
2.4	Star Slots	9
2.4.1	Slot 3	9
2.4.2	Slot 4	10
2.4.3	Slot 5	11
2.4.4	Slot 6	12
2.4.5	Slot 7	13
2.5	FID Slots	14
2.5.1	Slot 0	14
2.5.2	Slot 1	15
2.5.3	Slot 2	16
3	Gratings	17
3.1	HEG Arm	17
3.2	MEG Arm	19
A	Summary	21
A.1	Status	21
A.2	Comments	21

1 Front

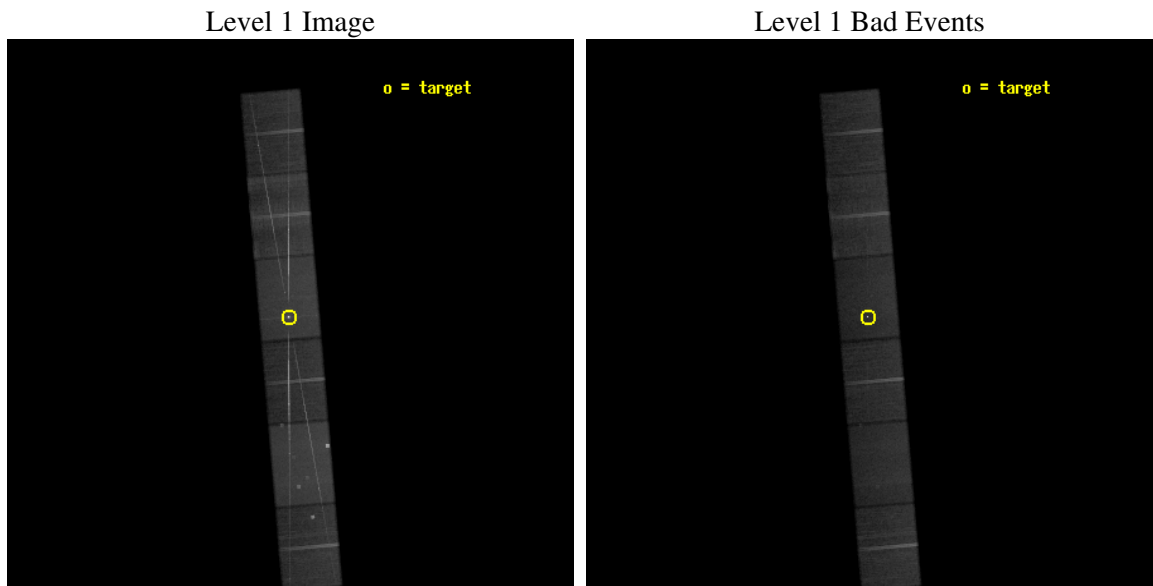
seq_num	200355
obs_id	6282
title	CORONAL FLARING AND THE NEUPERT EFFECT ON THE ACTIVE BINARY SIGMA GEM
observer	DR. Alexander Brown
object	SIGMA GEM
dtcycle	0
cycle	P
ra_targ	115.827917
dec_targ	28.88325
ra_nom	115.82505754502
dec_nom	28.873930167502
roll_nom	265.05800961632
revision	2
ontime	58875.0
livetime	57924.117684098
ontime4	58872.459009796
ontime5	58875.0
ontime6	58875.0
ontime7	58875.0
ontime8	58875.0
ontime9	58875.0
l2events	670629



2 OBI

2.1 OBI

2.1.1 Images

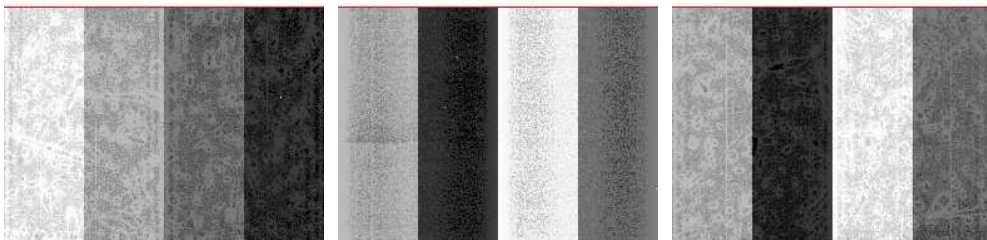


2.1.2 Bias

Chip 4

Chip 5

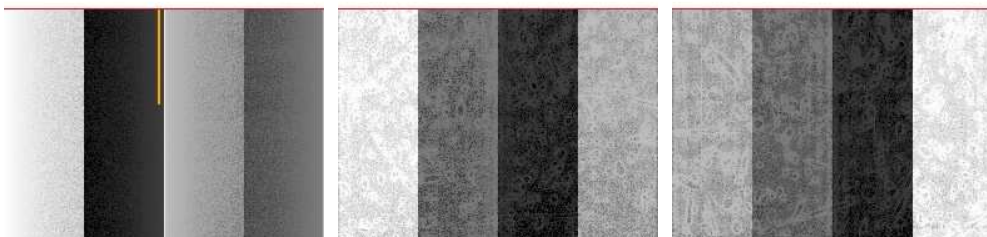
Chip 6



Chip 7

Chip 8

Chip 9



2.1.3 Parameters

obi_num	1
ascdsver	7.6.7
caldsver	3.2.1
date	2006-03-04T04:50:07
revision	2

sched_exp_time	58714.478000
ontime	59121.675284654
ontime4	59119.13429445
ontime5	59121.675284654
ontime6	59121.675284654
ontime7	59121.675284654
ontime8	59121.675284654
ontime9	59124.216294765
l1events	2349369

2.1.4 Events

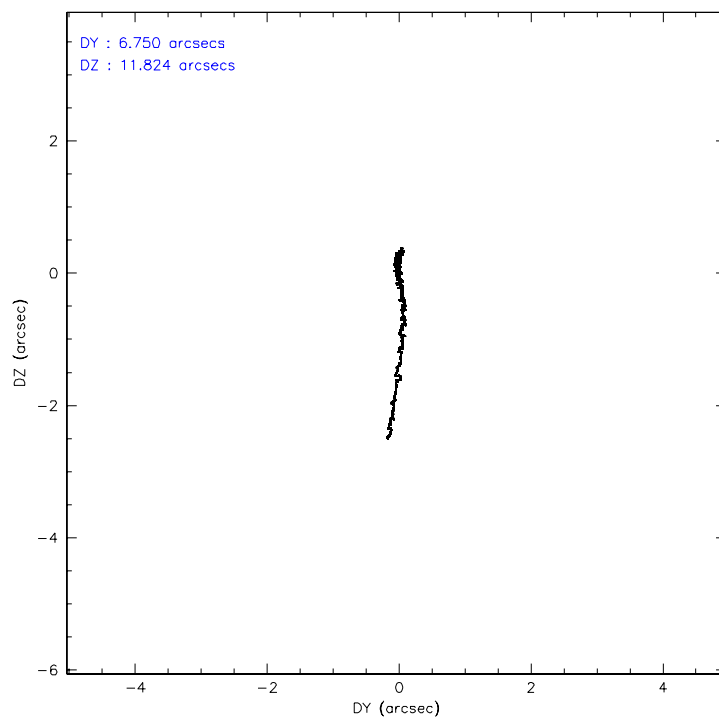
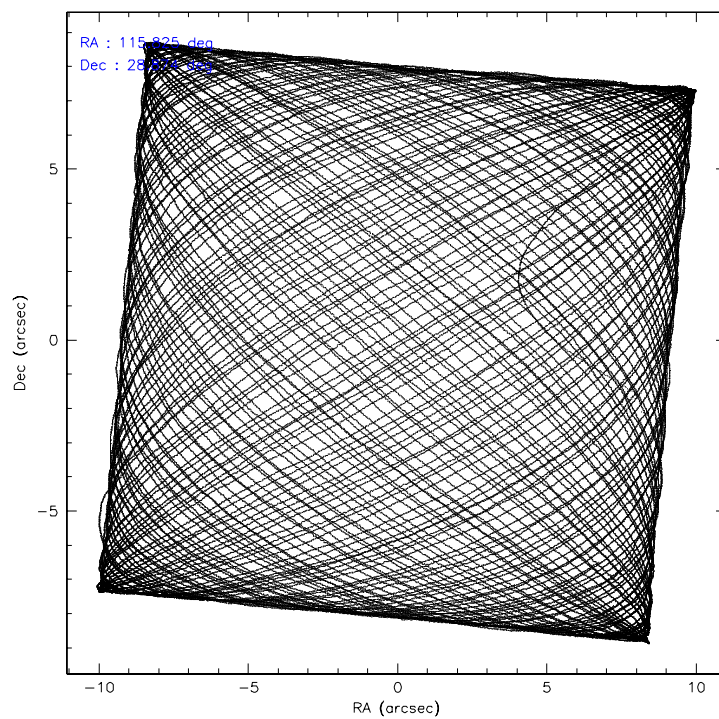
	ccd 4	ccd 5	ccd 6	ccd 7	ccd 8	ccd 9
level 1 events	325219	474235	359178	466851	430971	292915
rejected events	275688	241953	252120	257353	291157	245431
rejected %	84%	51%	70%	55%	67%	83%

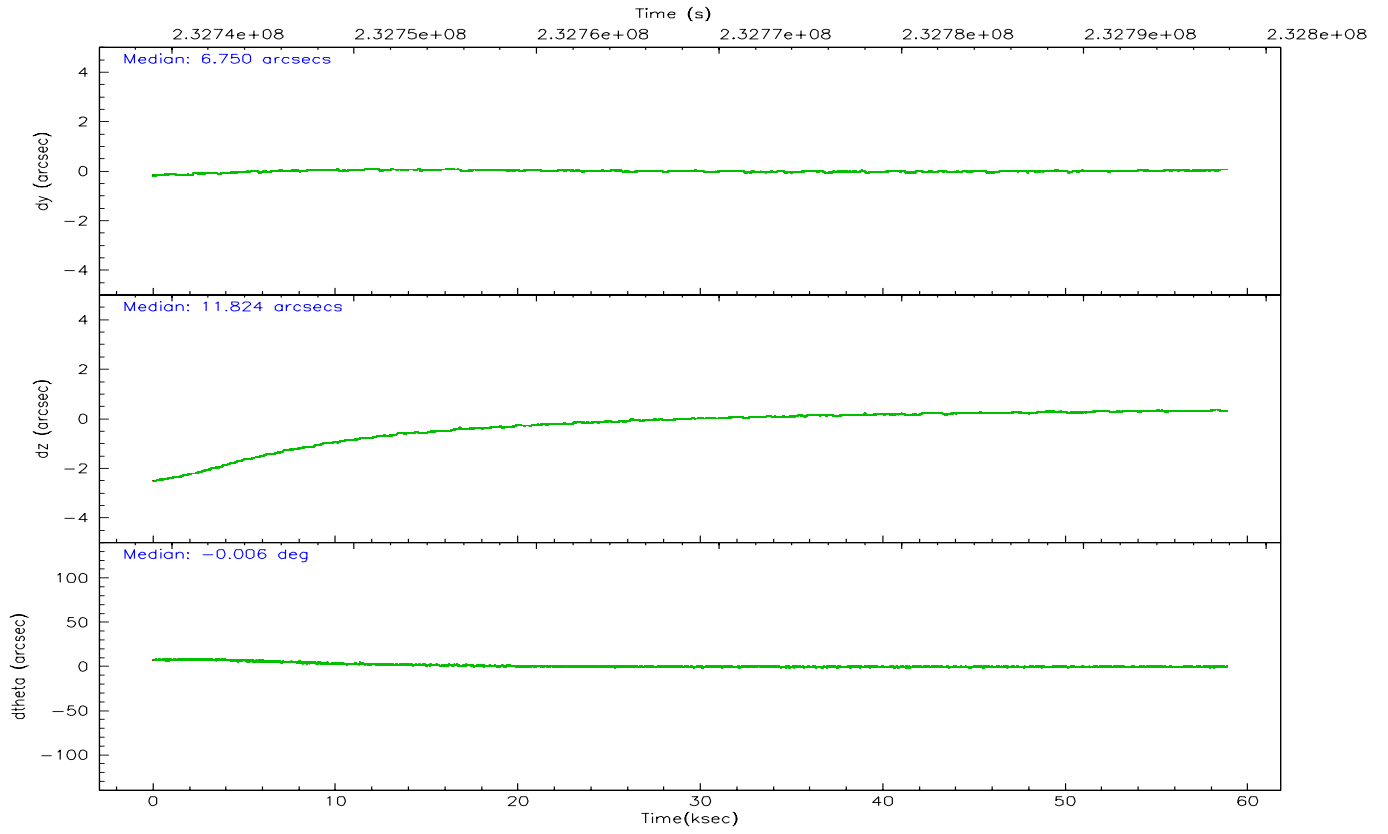
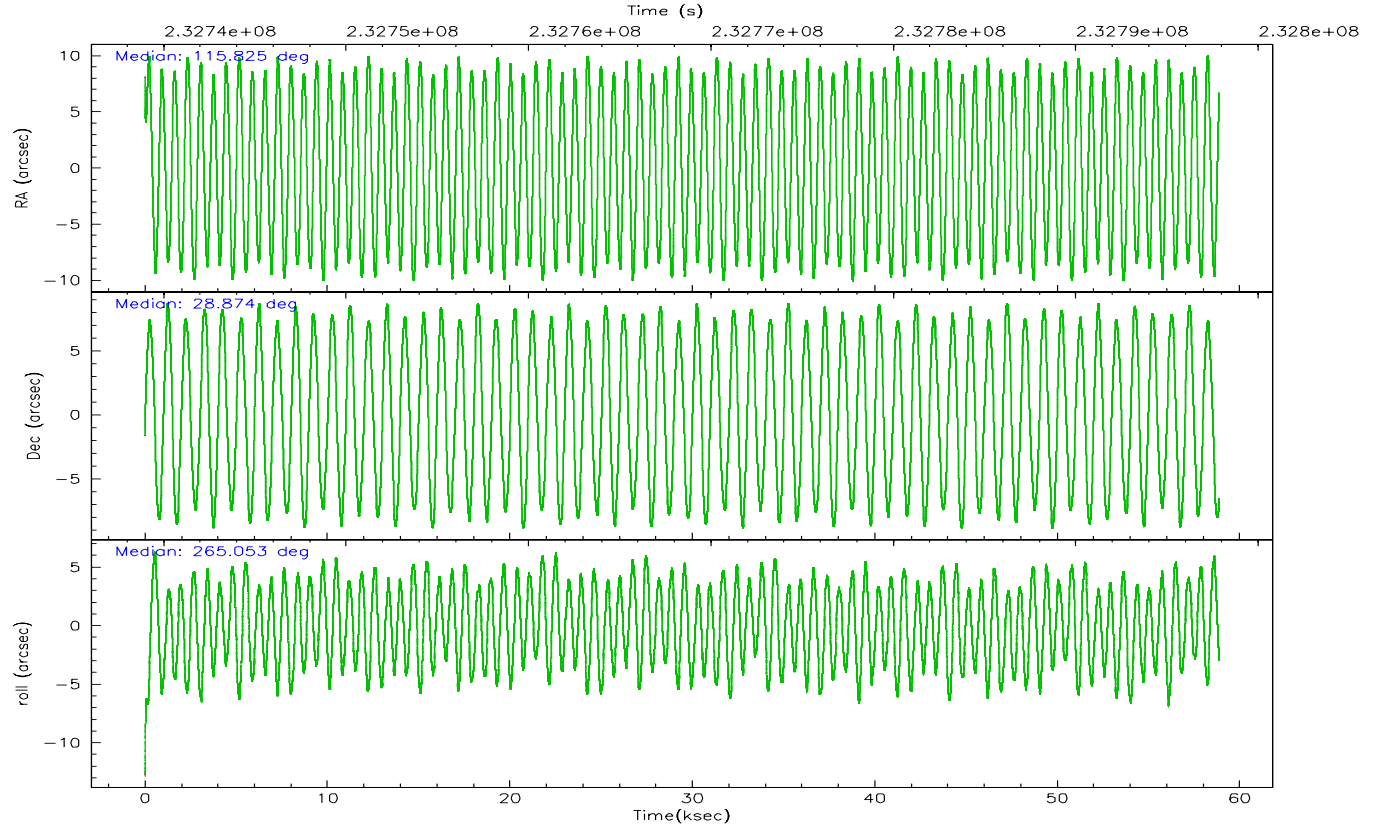
	ccd 4	ccd 5	ccd 6	ccd 7	ccd 8	ccd 9
grade 0 events	26958	34396	72833	20480	71725	24062
	8%	7%	20%	4%	16%	8%
grade 1 events	240	848	369	719	414	158
	0%	0%	0%	0%	0%	0%
grade 2 events	8761	71514	14622	52246	22892	8174
	2%	15%	4%	11%	5%	2%
grade 3 events	4187	7159	5902	14376	11731	4045
	1%	1%	1%	3%	2%	1%
grade 4 events	3993	7096	5640	14108	10742	4025
	1%	1%	1%	3%	2%	1%
grade 5 events	12568	22056	13224	30586	17734	13999
	3%	4%	3%	6%	4%	4%
grade 6 events	5871	113106	8402	109119	23383	7364
	1%	23%	2%	23%	5%	2%
grade 7 events	262641	218060	238186	225217	272350	231088
	80%	45%	66%	48%	63%	78%

2.2 Compared Parameters

Parameter	Planned	Actual	Parameter	Planned	Actual
Instrument	ACIS	ACIS	Obspar format version number	6	6
Detector	ACIS-456789	ACIS-456789	Obspar file type	PREDICTED	ACTUAL
Grating	HETG	HETG	Obspar update status	NONE	UPDATED
Data mode	FAINT	FAINT	On-chip summing requested	N	N
Observation mode	POINTING	POINTING	Subarray requested	CUSTOM	CUSTOM
Pointing RA	115.811498	115.8250575450191	Subarray start row	1	1
Pointing Dec	28.898419	28.87393016750216	Subarray row count	747	747
Pointing Roll	264.907938	265.0580096163207	Alternating exposures requested	N	N
SIM focus pos (mm)	-0.684267	-0.6828225247311905	Primary exposure time	0.000000	2.5
SIM defocus (mm)	0	0.001444936568705701			
SIM translation stage pos (mm)	-187.132523	-187.1254020033014			
SIM translation stage offset (mm)	-3	-3.007120579706367			
Observation start time	232739144.184000	232737934.8599			
Observation start date	2005-05-17T17:44:40	2005-05-17T17:25:34			
Observation end time	232797859.184000	232798083.91264			
Observation end date	2005-05-18T10:03:15	2005-05-18T10:08:03			
Read mode	TIMED	TIMED			

2.3 Aspect



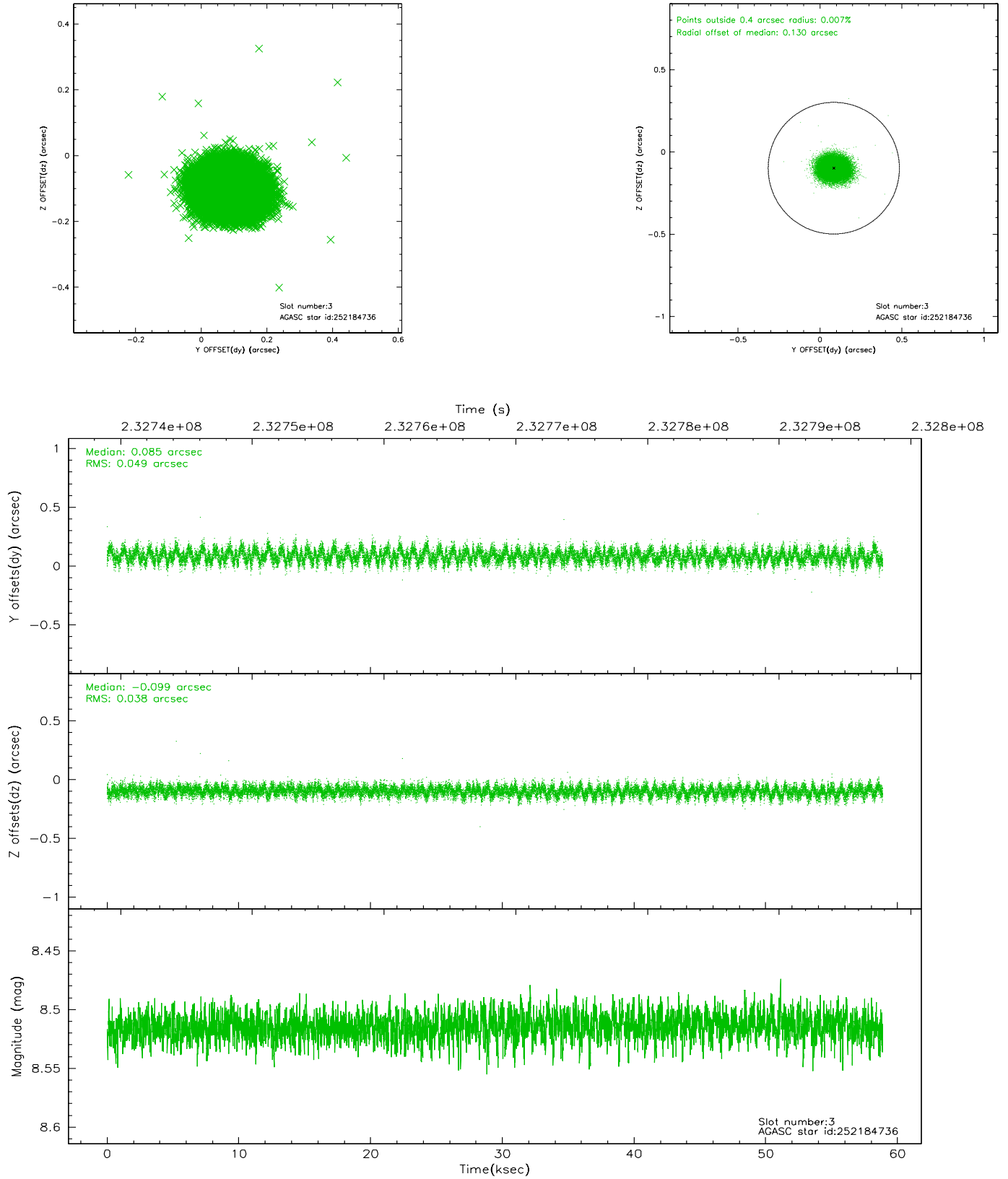


Slot Statistics

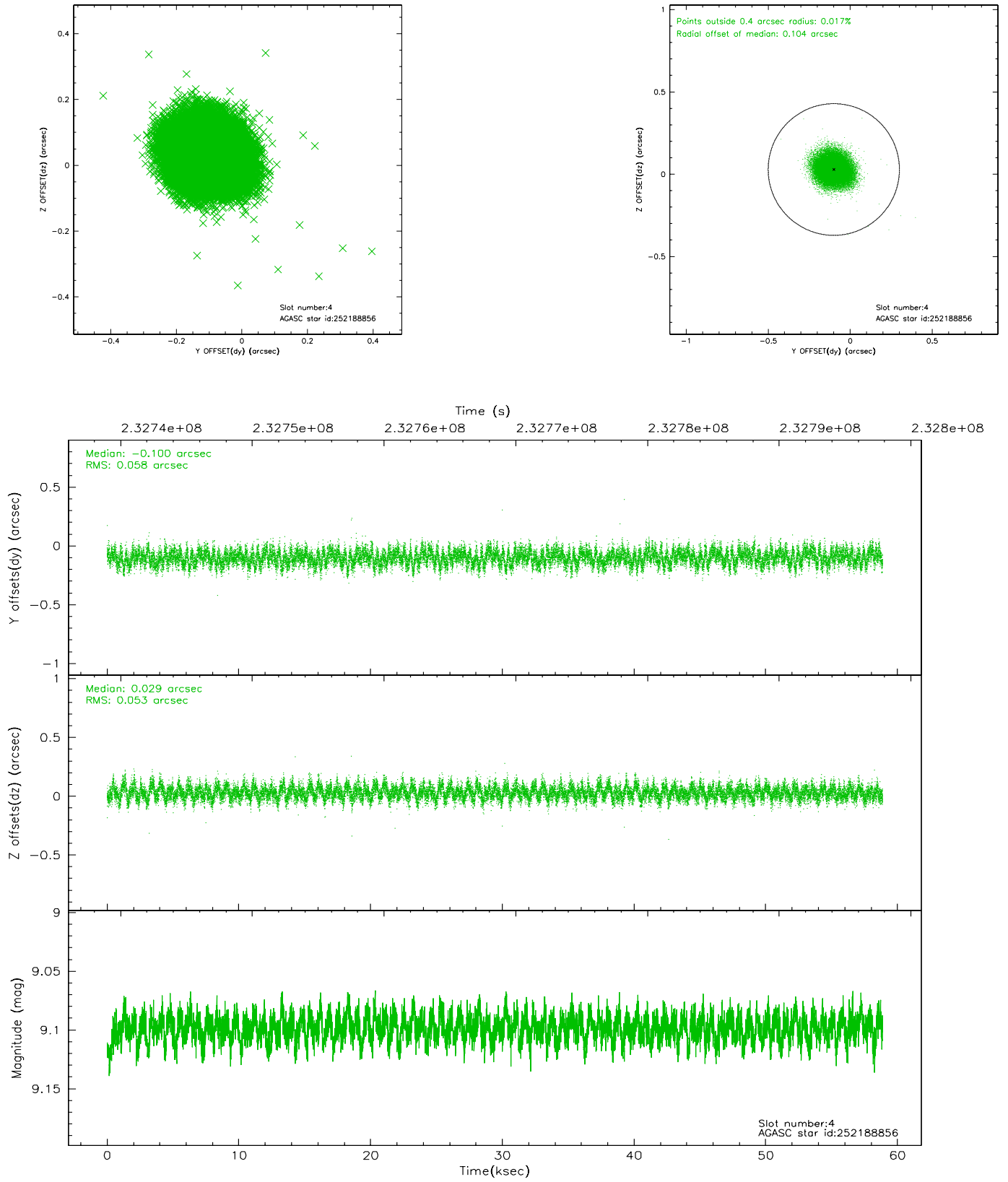
slot	status	id	mag	n_pts	med_dy	med_dz	dr1	dr2	ra	dec	mean_y	mean_z
0	FID	ACIS-S-1	7.18	14361	0.036	0.050	0.010	0.045	0.000000	0.000000	936.81	-1790.47
1	FID	ACIS-S-2	7.09	14362	-0.073	-0.080	0.015	0.033	0.000000	0.000000	-759.23	-1795.13
2	FID	ACIS-S-5	7.23	14362	0.015	0.037	0.016	0.039	0.000000	0.000000	-1812.37	107.09
3	GUIDE	252184736	8.51	28709	0.085	-0.099	0.066	0.106	115.841049	28.337104	2004.77	272.90
4	GUIDE	252188856	9.10	28709	-0.100	0.029	0.084	0.133	115.995799	29.406043	-1871.75	413.67
5	GUIDE	252192288	9.05	28705	-0.011	0.101	0.164	0.238	116.362333	28.752504	365.05	1778.30
6	GUIDE	252194776	9.30	28711	0.056	-0.058	0.100	0.171	115.244419	29.434716	-1769.02	-1942.60
7	GUIDE	252196488	7.03	28722	-0.034	0.033	0.059	0.093	115.667880	28.833856	271.76	-430.23

2.4 Star Slots

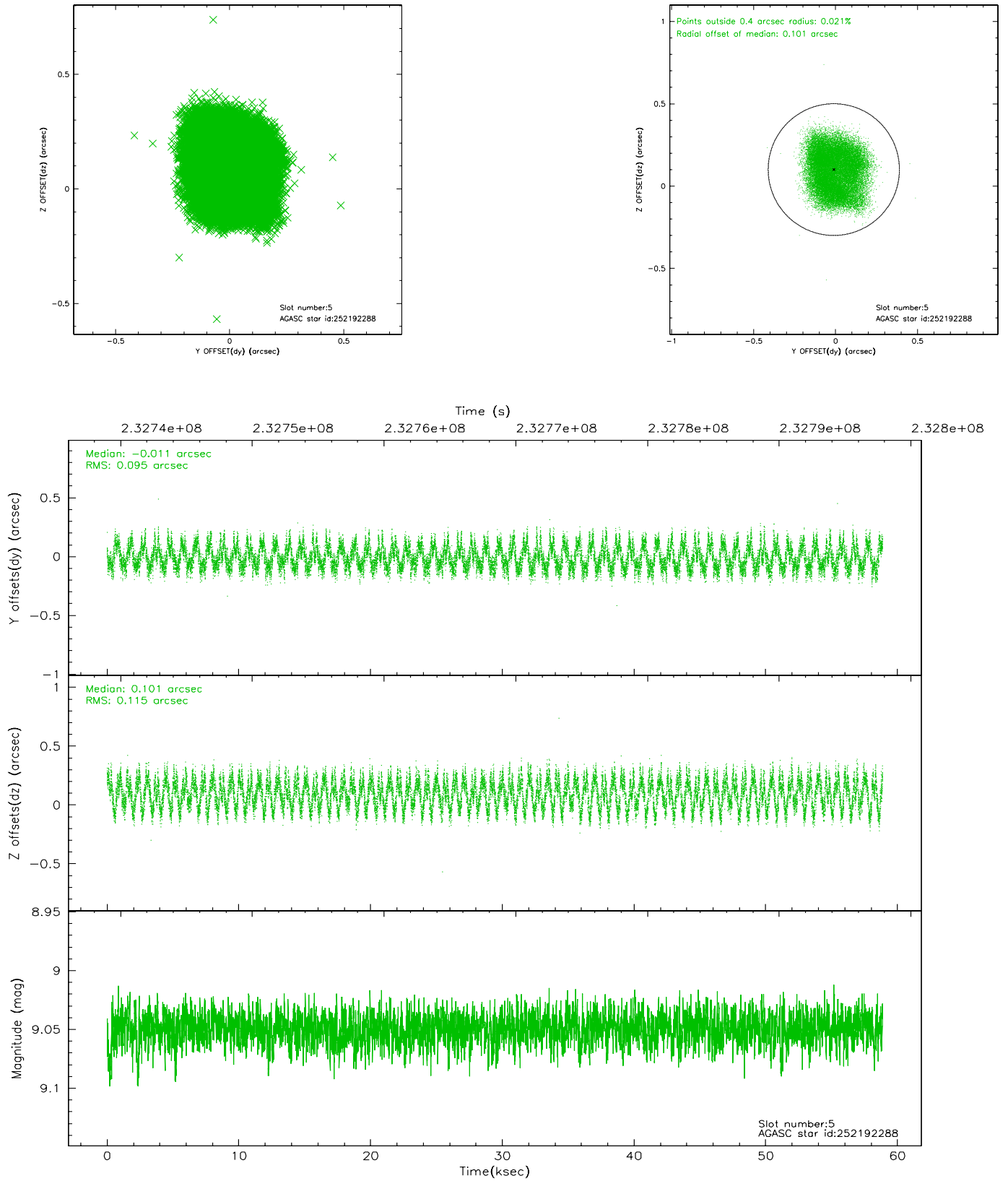
2.4.1 Slot 3



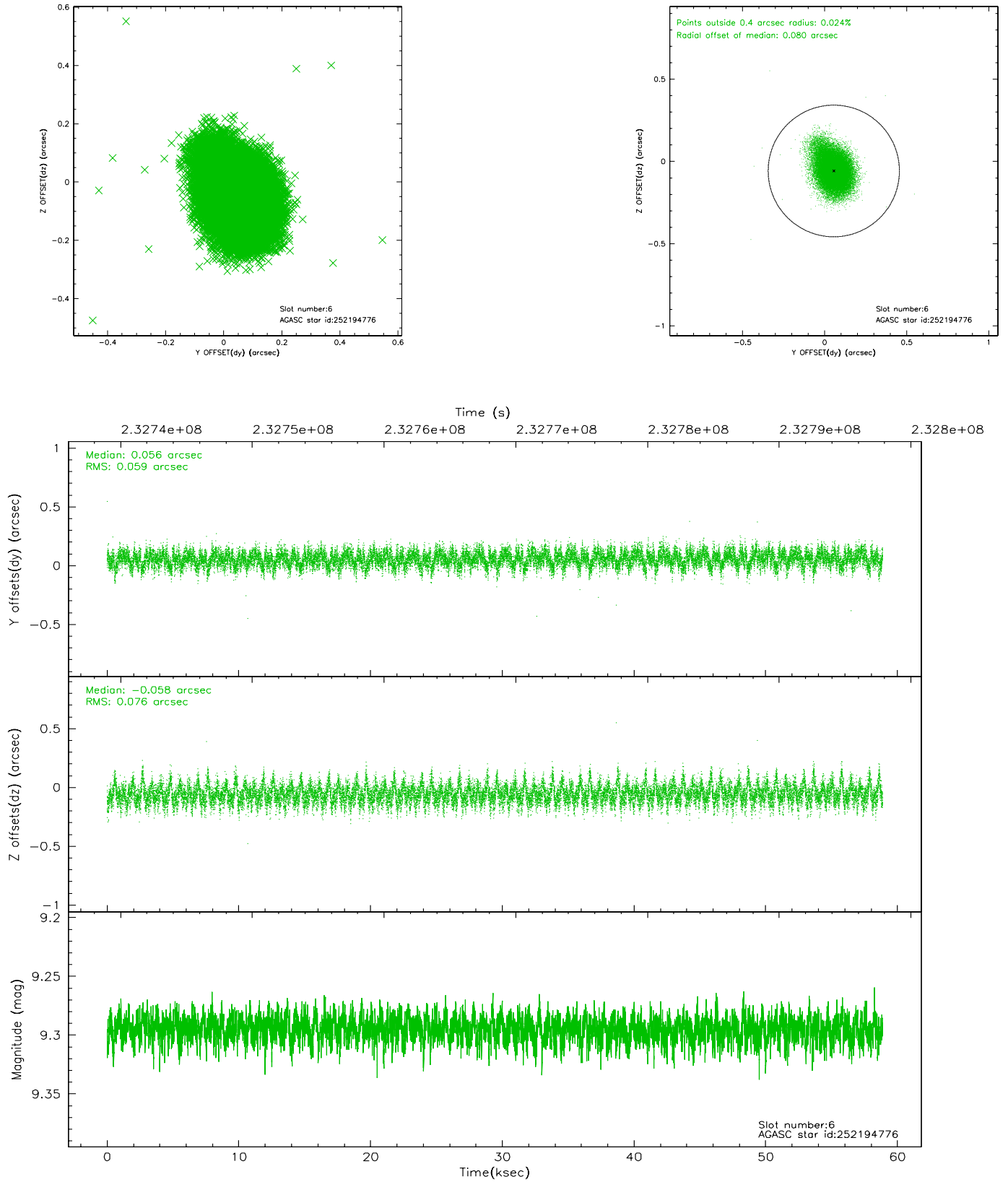
2.4.2 Slot 4



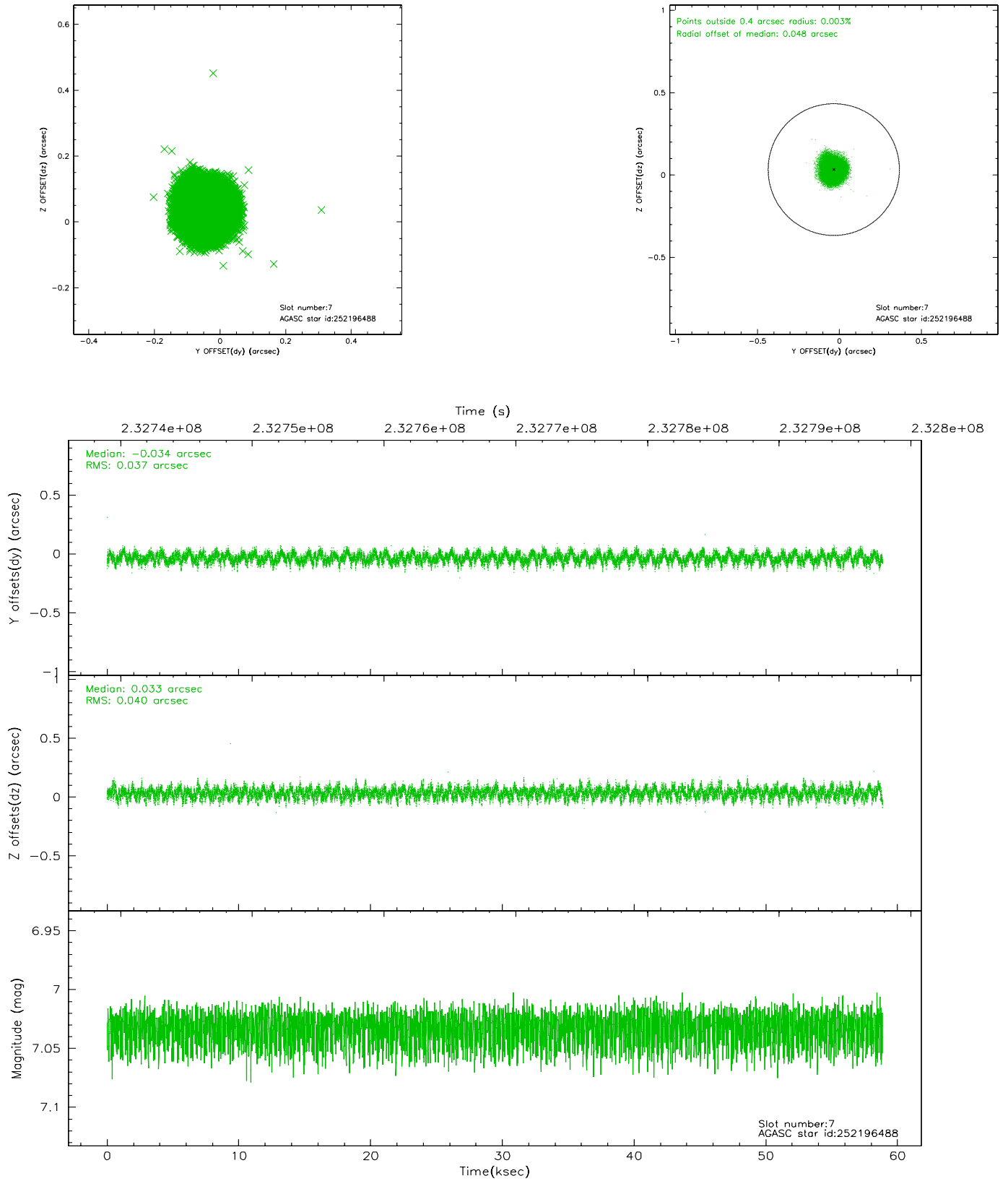
2.4.3 Slot 5



2.4.4 Slot 6

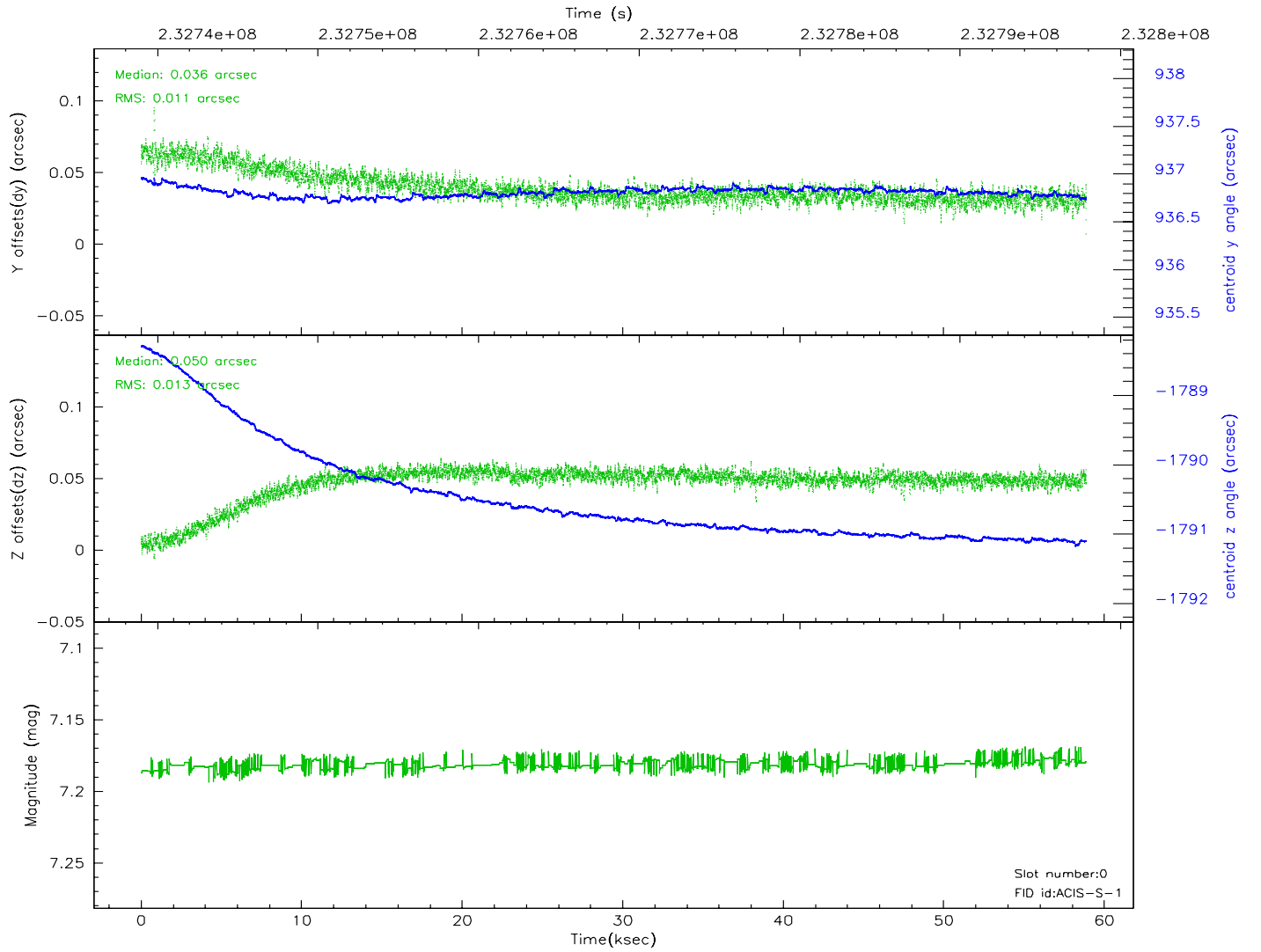
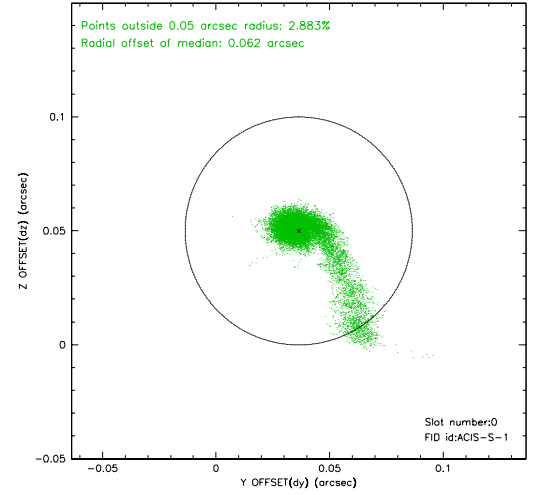
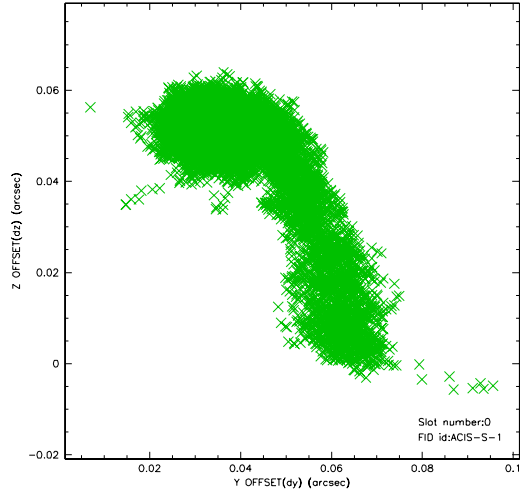


2.4.5 Slot 7

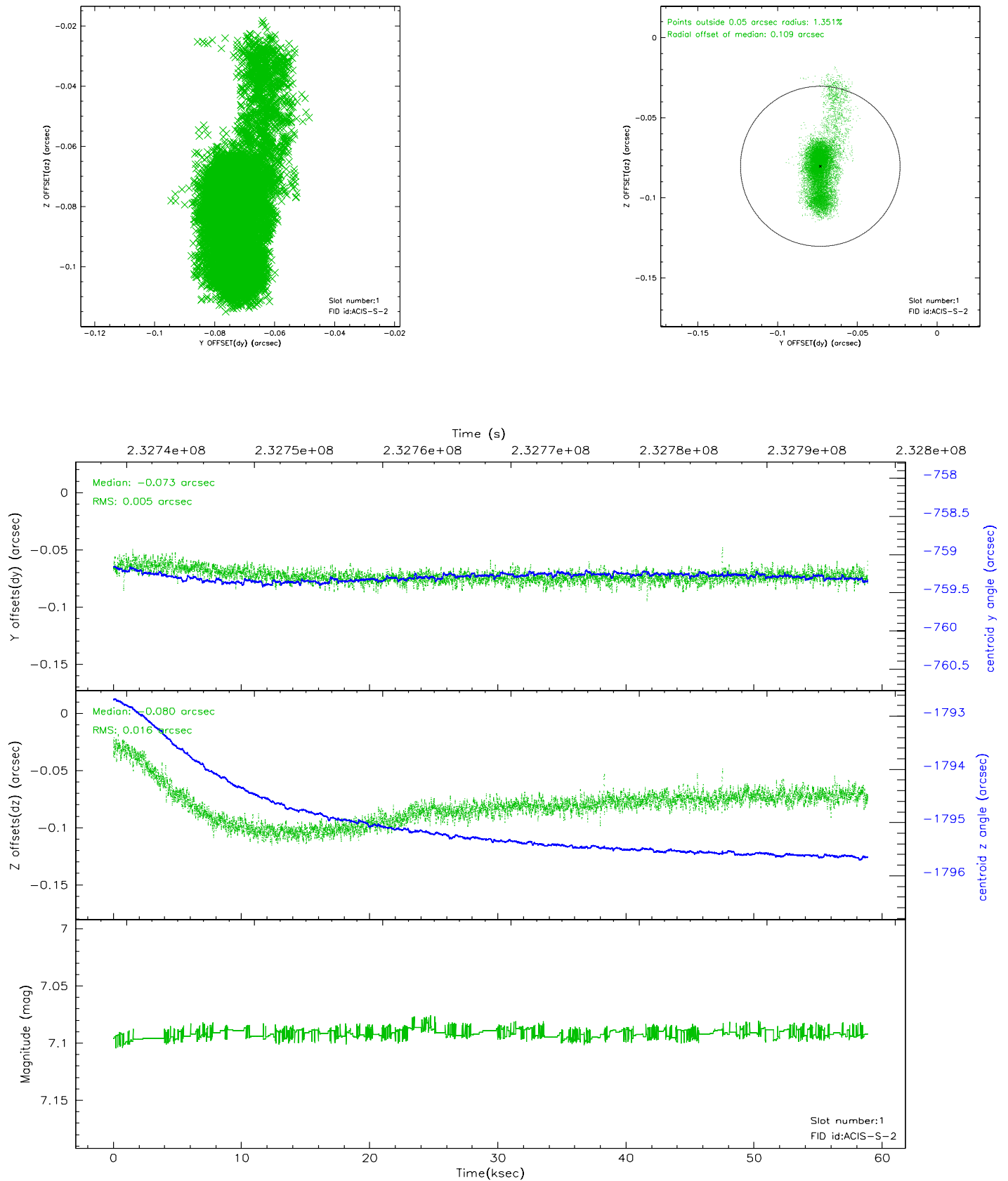


2.5 FID Slots

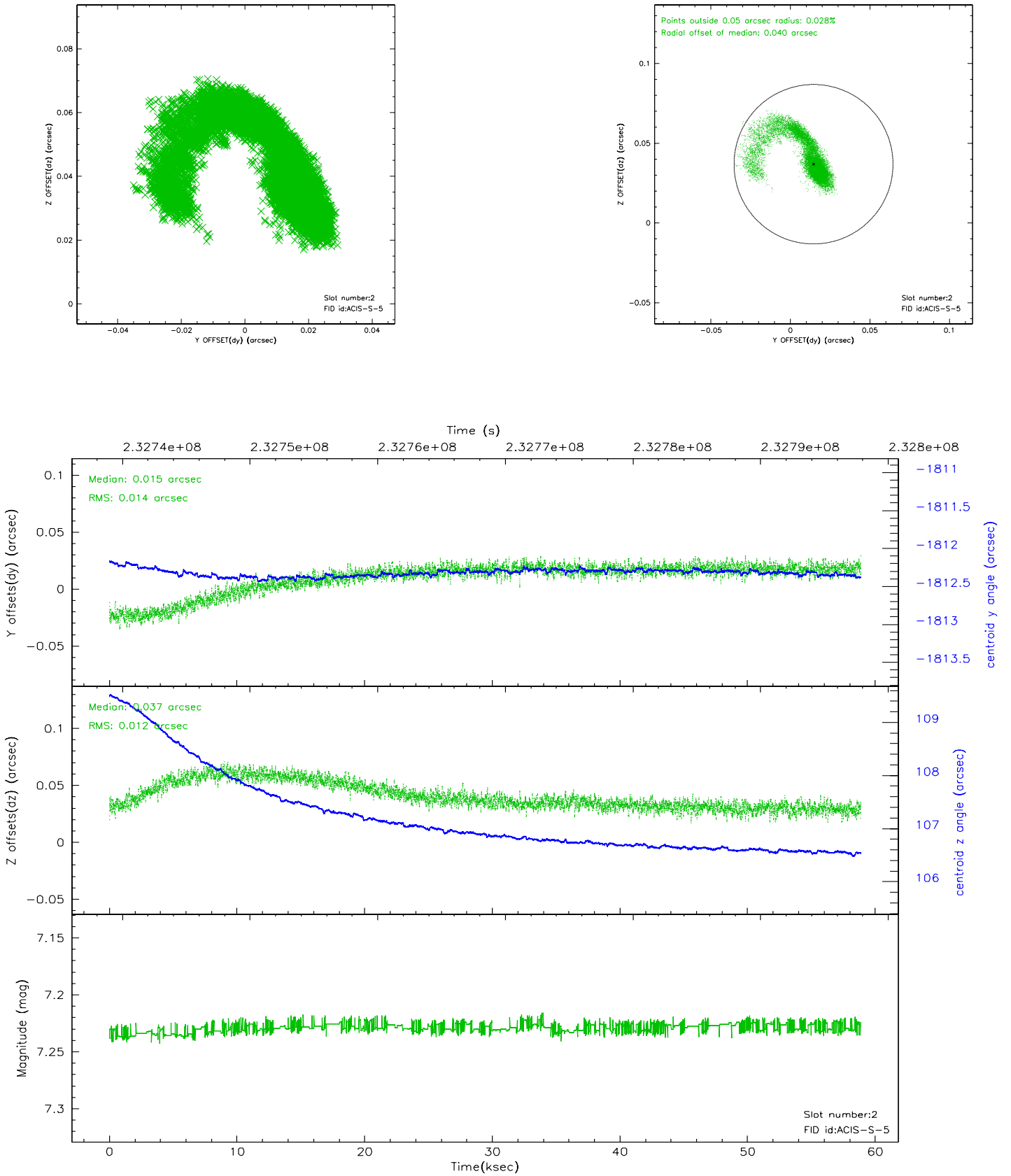
2.5.1 Slot 0



2.5.2 Slot 1

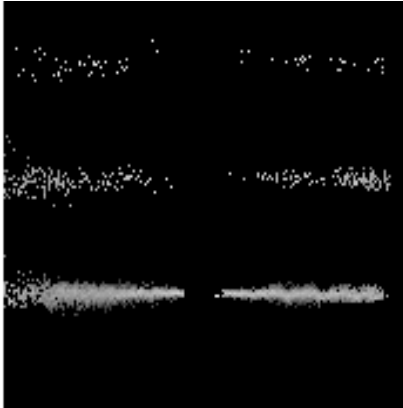


2.5.3 Slot 2

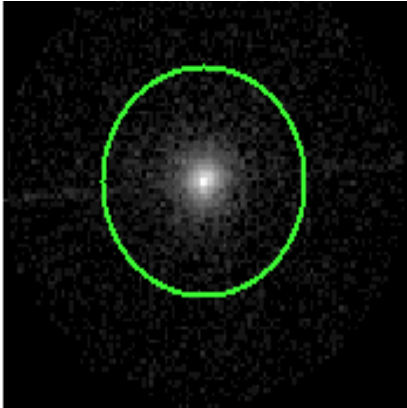


3 Gratings

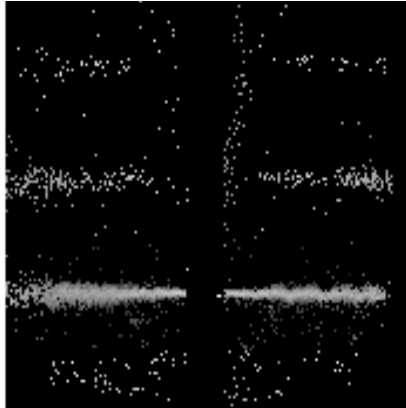
3.1 HEG Arm



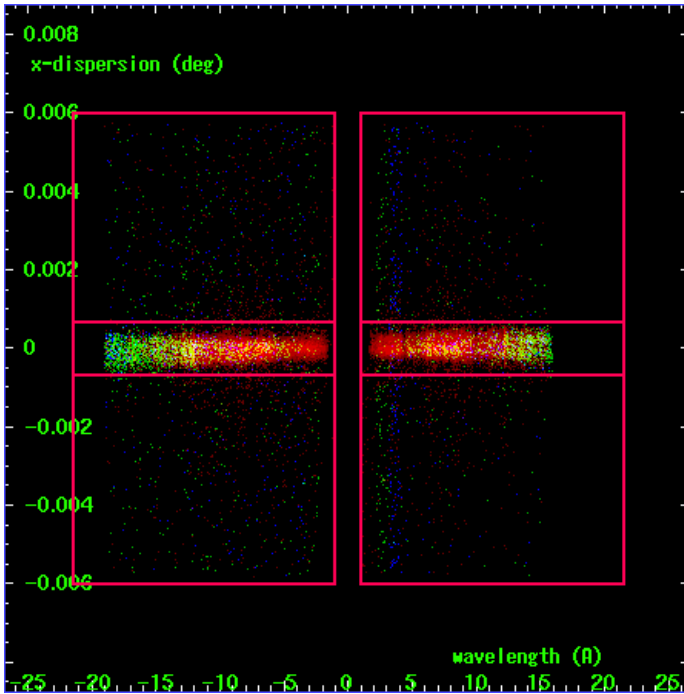
HEG Order Sort 123



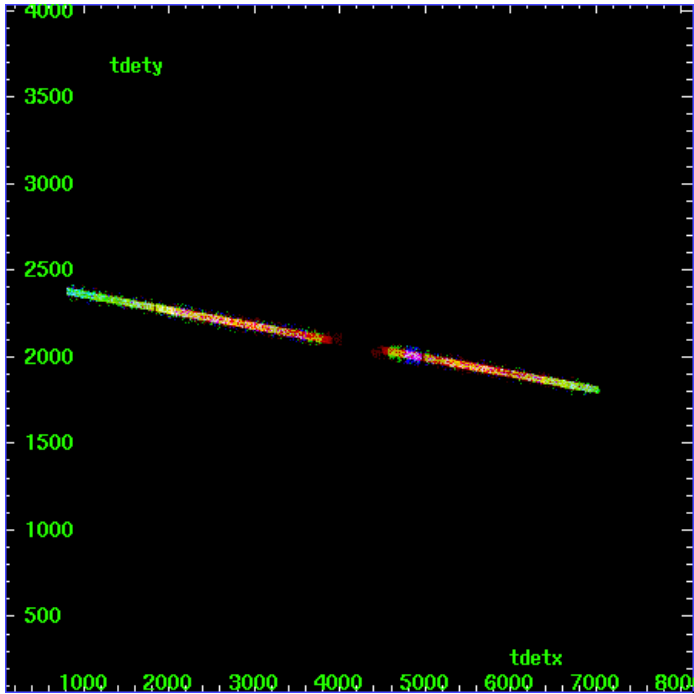
HEG Zero Order



HEG Order Sort ALL

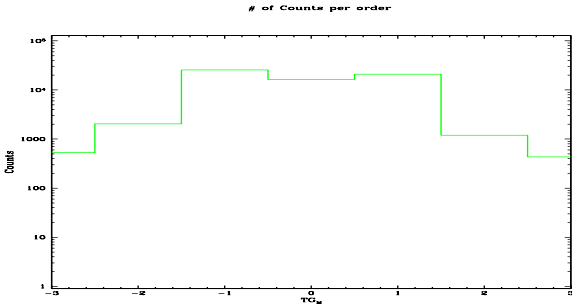


Spot Image HEG

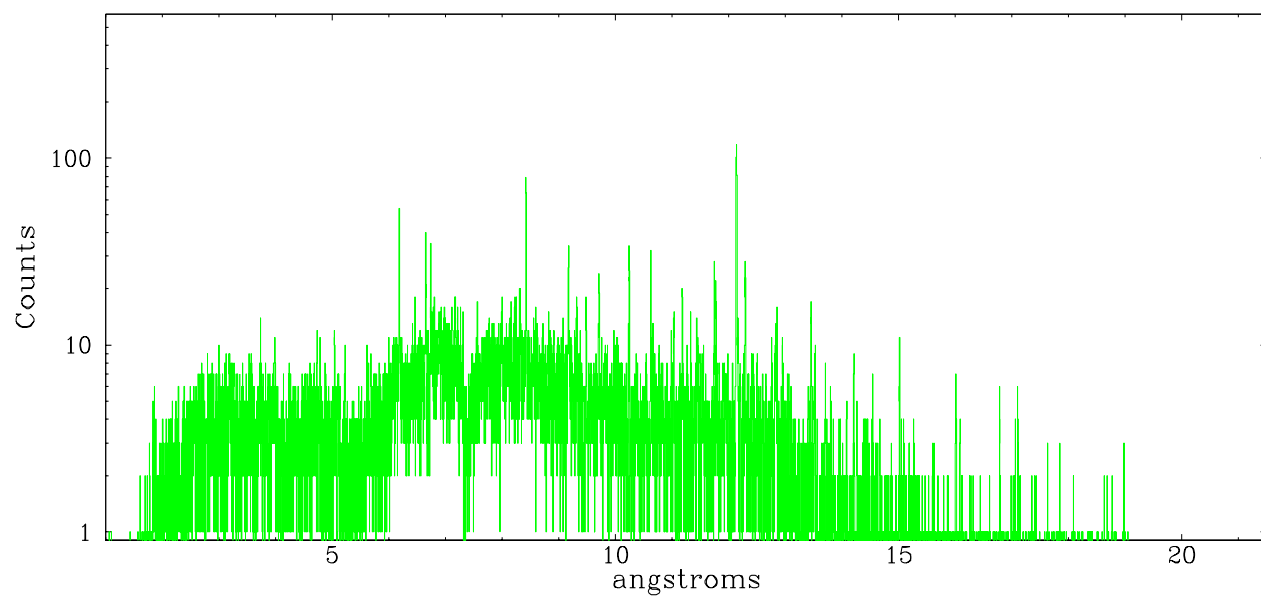


Full Detector HEG

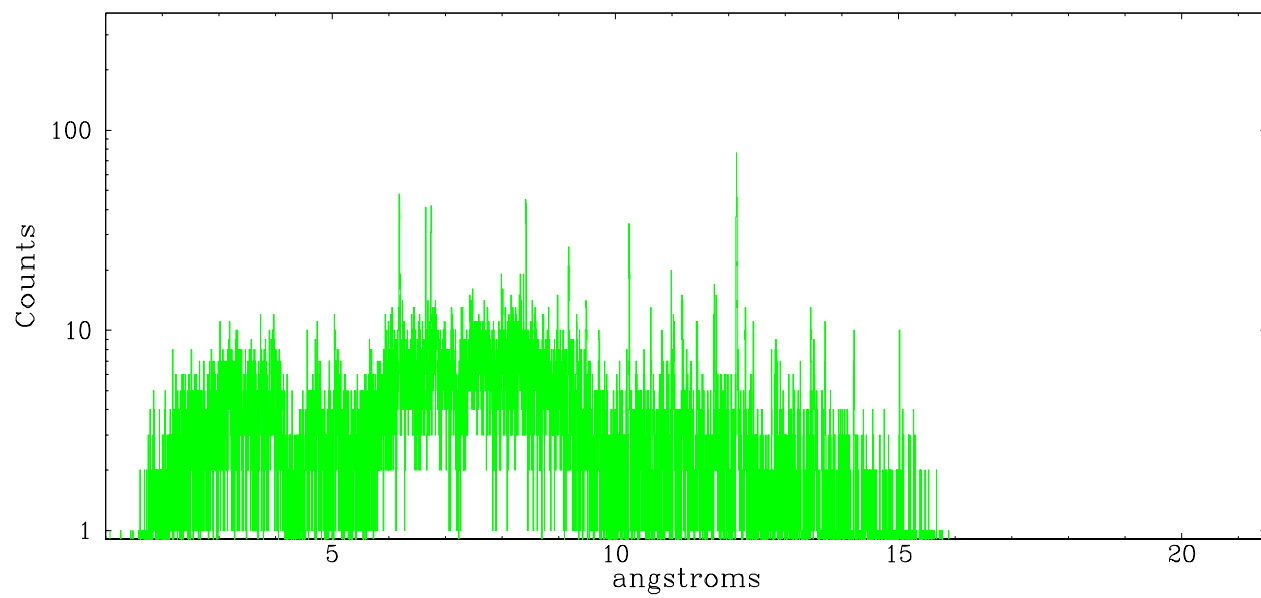
	order -3	order -2	order -1	order 0	order 1	order 2	order 3
Events	532	2038	25548	16357	21033	1201	434



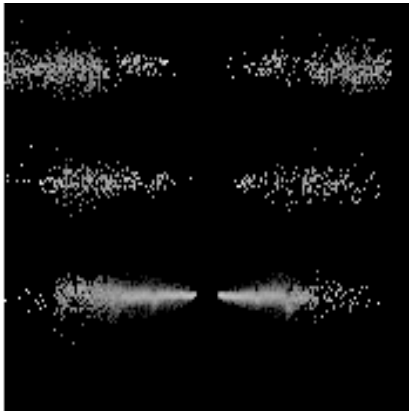
heg order -1



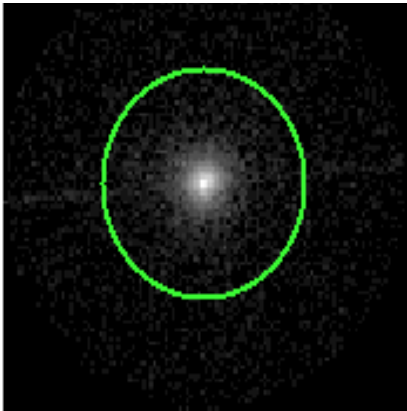
heg order +1



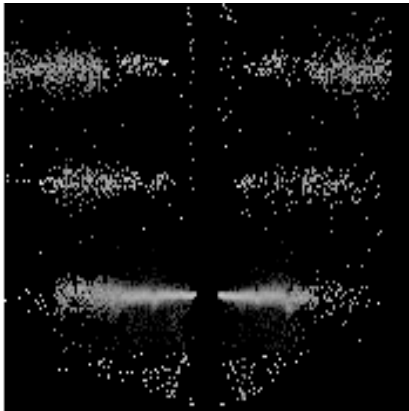
3.2 MEG Arm



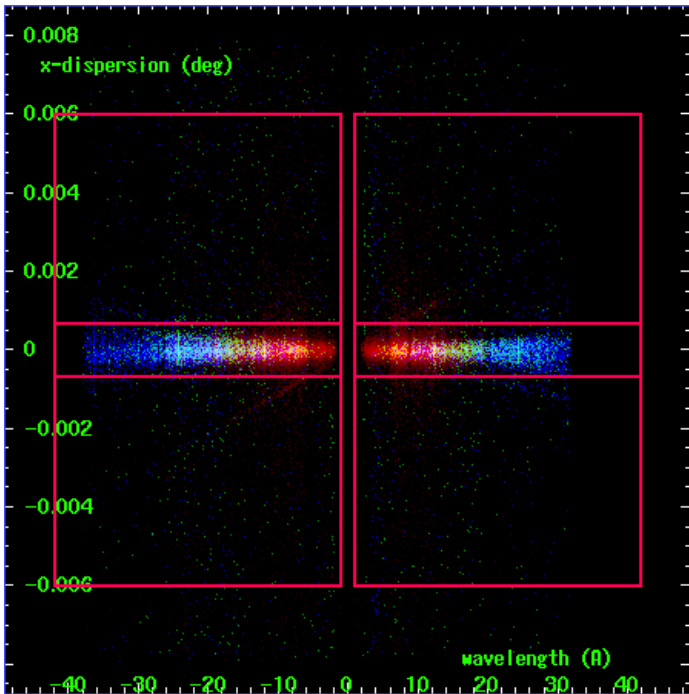
MEG Order Sort 123



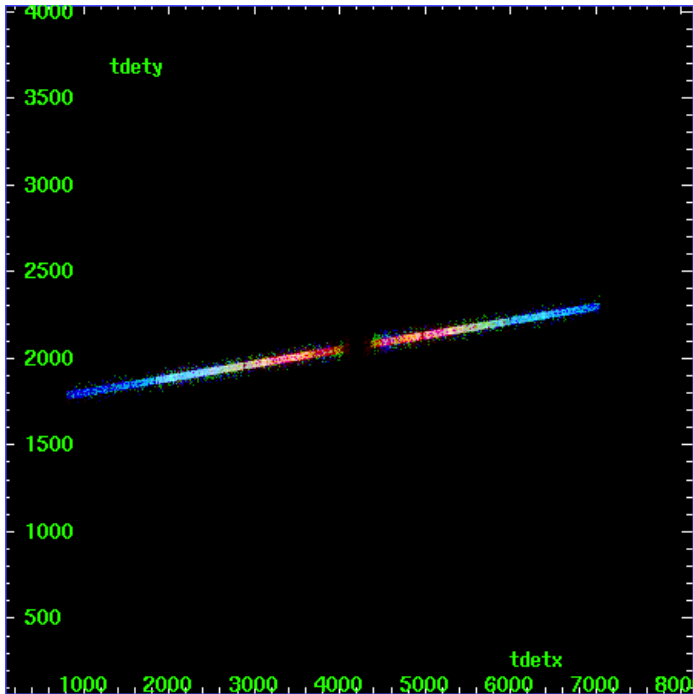
MEG Zero Order



MEG Order Sort ALL

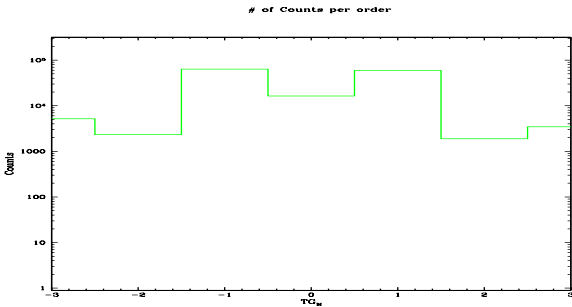


Spot Image MEG

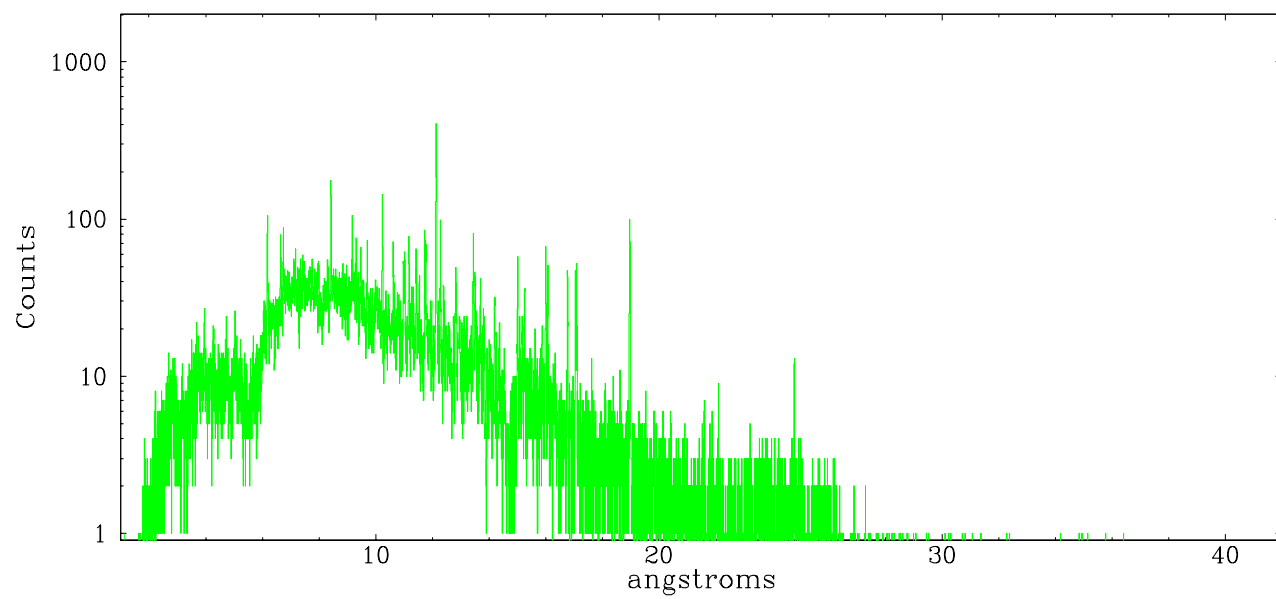


Full Detector MEG

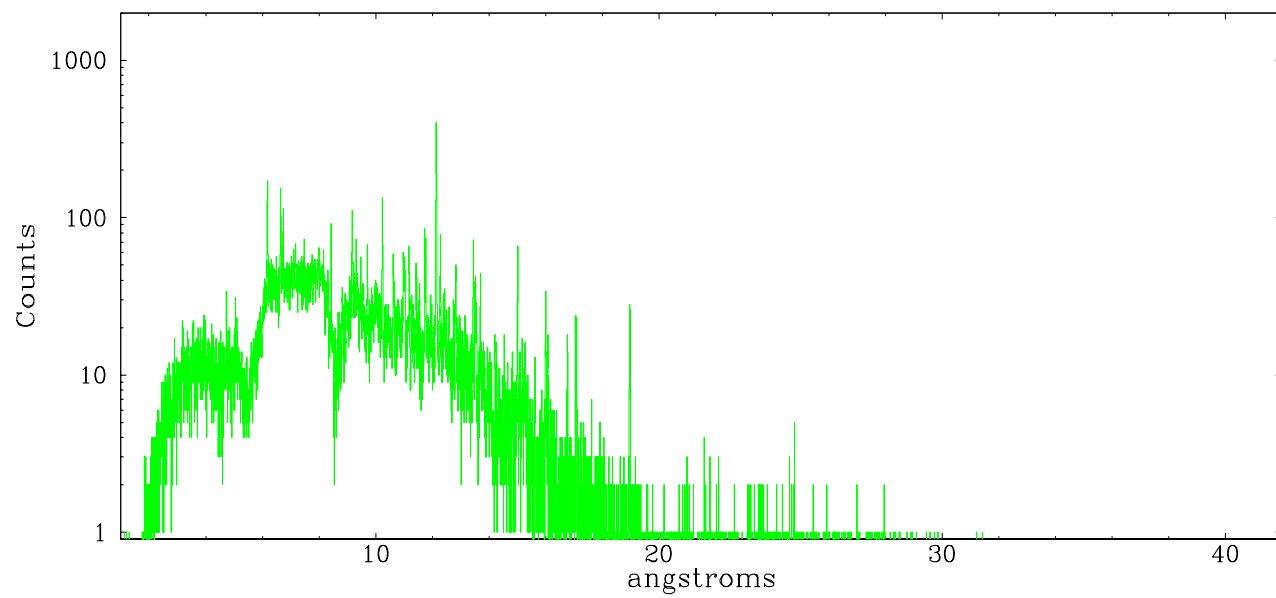
	order -3	order -2	order -1	order 0	order 1	order 2	order 3
Events	5176	2333	63400	16357	59464	1882	3444



meg order -1



meg order +1



A Summary

A.1 Status

V&V Scientist	Beth Sundheim
V&V Date (YYYY-MM-DD)	2006.03.05
V&V Edition	1
V&V Disposition and Status	OK
V&V Charge Time	58.875

A.2 Comments