

V&V Reference Report

L2 ASCDS Version : 8.4.5

Observation 62102 - L2 Version 5
Chandra X-Ray Center

L2 Processing Date : Aug 25 2012

Contents

1	Front	2
2	OBI Primary	3
2.1	OBI	3
2.1.1	Images	3
2.1.2	Bias	3
2.1.3	Parameters	4
2.1.4	Events	4
2.2	Compared Parameters	5
2.3	Star Slots	6
2.4	FID Slots	6
3	OBI Secondary	6
3.1	OBI	6
3.1.1	Images	6
3.1.2	Bias	6
3.1.3	Parameters	7
3.1.4	Events	7
A	Summary	8
A.1	Status	8
A.2	Comments	8

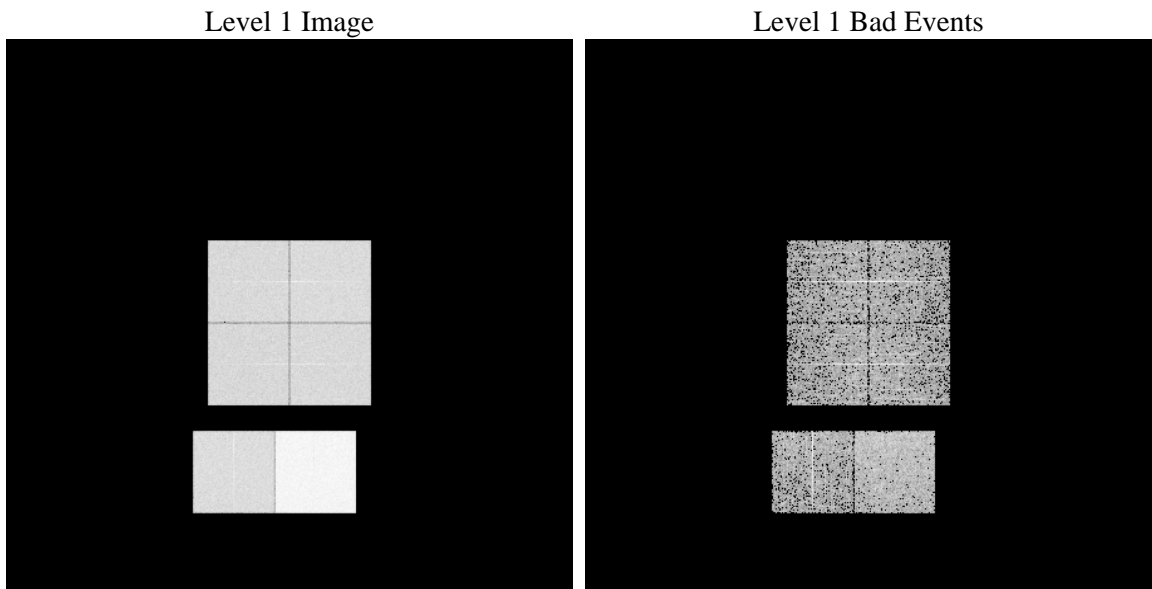
1 Front

seq_num	 	Sequence number
obs_id	62102	Observation id
title	ACIS-012367 diagnostics	Proposal title
observer	CHANDRA engineering request/realtime commanding	Principal investig
object	 	Source name
dtcycle	0	
cycle	P	events are from which exps? P[rimary] S[econdar
ra_targ	0.0	Observer's specified target RA [deg]
dec_targ	0.0	Observer's specified target Dec [deg]
ra_nom	122.039123361	Nominal RA [deg]
dec_nom	-55.018130711783	Nominal Dec [deg]
roll_nom	288.85495208865	Nominal Roll [deg]
revision	5	Processing version of data
ontime	3699.5783050954	Sum of GTIs [s]
livetime	3662.0061222808	Livetime [s]
ontime0	1397.8389154226	Sum of GTIs [s]
ontime1	1489.1294232905	Sum of GTIs [s]
ontime2	1312.8949953467	Sum of GTIs [s]
ontime3	1363.8571831882	Sum of GTIs [s]
ontime6	1486.5365954936	Sum of GTIs [s]
ontime7	3699.5783050954	Sum of GTIs [s]
l2events	900062	Number of level 2 events

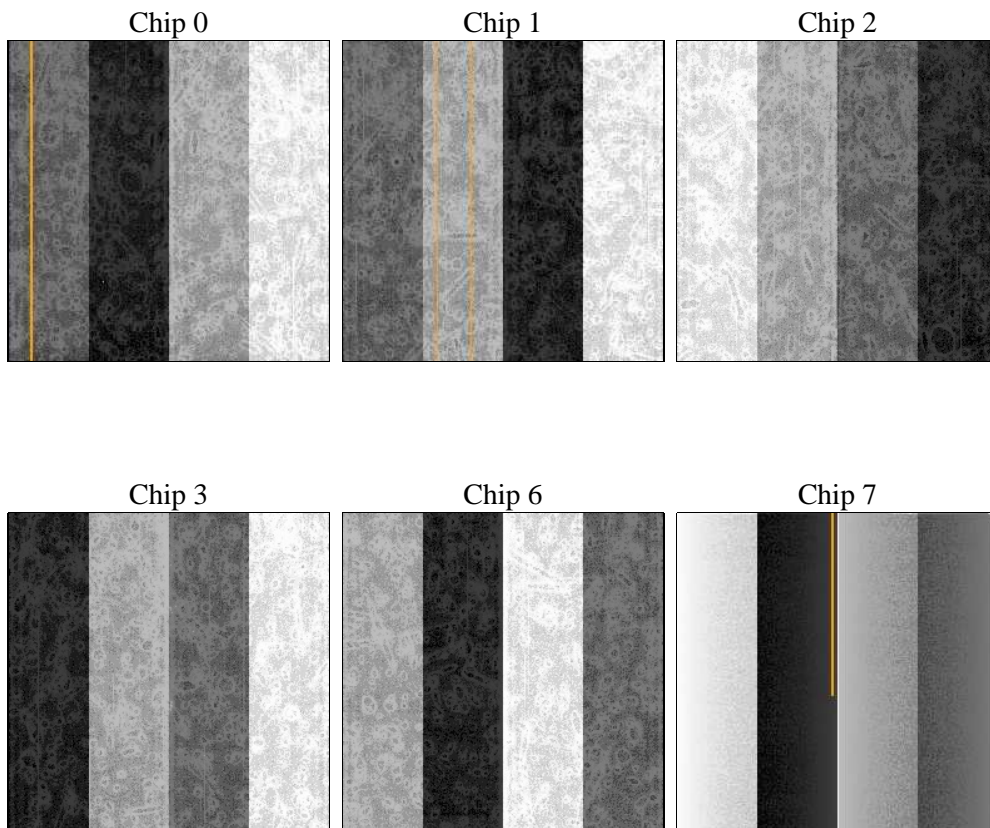
2 OBI Primary

2.1 OBI

2.1.1 Images



2.1.2 Bias



2.1.3 Parameters

obi_num	0	Obi number	sched_exp_time	0.0	[s] Scheduled observation exposure time
ascdsver	8.4.5	Processing system revision	ontime	3699.5783050954	Sum of GTIs [s]
caldsver	4.5.1.1	 	ontime0	1397.8389154226	Sum of GTIs [s]
date	2012-08-25T09:51:20	Date and time of file creation	ontime1	1489.1294232905	Sum of GTIs [s]
revision	5	Processing version of data	ontime2	1312.8949953467	Sum of GTIs [s]
			ontime3	1363.8571831882	Sum of GTIs [s]
			ontime6	1486.5365954936	Sum of GTIs [s]
			ontime7	3699.5783050954	Sum of GTIs [s]
			l1events	1018825	Number of level 1 events

2.1.4 Events

	ccd 0	ccd 1	ccd 2	ccd 3	ccd 6	ccd 7		ccd 0	ccd 1	ccd 2	ccd 3	ccd 6	ccd 7
level 1 events	130645	138588	124949	130248	146387	348008	grade 0 events	65470	69379	62710	65083	71960	84682
rejected events	12301	12223	12286	13141	13487	19206		50%	50%	50%	49%	49%	24%
rejected %	9%	8%	9%	10%	9%	5%	grade 1 events	462	462	463	462	498	280
								0%	0%	0%	0%	0%	0%
							grade 2 events	20874	22457	19554	20548	23093	72395
								15%	16%	15%	15%	15%	20%
							grade 3 events	7512	8072	7054	7425	8204	33722
								5%	5%	5%	5%	5%	9%
							grade 4 events	7400	7866	7147	7465	8238	33527
								5%	5%	5%	5%	5%	9%
							grade 5 events	995	1075	1004	992	1127	4721
								0%	0%	0%	0%	0%	1%
							grade 6 events	17088	18591	16198	16586	21405	104476
								13%	13%	12%	12%	14%	30%
							grade 7 events	10844	10686	10819	11687	11862	14205
								8%	7%	8%	8%	8%	4%

2.2 Compared Parameters

Parameter	Planned	Actual
Instrument	ACIS	ACIS
Detector	ACIS-012367	ACIS-012367
Grating	NONE	NONE
Data mode	FAINT	FAINT
Observation mode	SECONDARY	SECONDARY
[deg] Pointing RA	0	122.0391233610038
[deg] Pointing Dec	0	-55.01813071178278
[deg] Pointing Roll	0.0	288.8549520886492
[mm] SIM focus pos	-0.782348	-0.6828225247311905
[mm] SIM defocus	0	0.8505141146731063
[mm] SIM translation stage pos	-233.592463	250.466033080201
[mm] SIM translation stage offset	0	-0.01005468664627074
[s] Observation start time (MET)	70625828.758	70625827.98952401
Observation start date	2000-03-28T10:17:09	2000-03-28T10:17:07
[s] Observation end time (MET)	70637282.108	70637281.33994301
Observation end date	2000-03-28T13:28:02	2000-03-28T13:28:01
Read mode	TIMED	TIMED

Parameter	Planned	Actual
Obspar format version number	7	7
Obspar file type	PREDICTED	ACTUAL
Obspar update status	NONE	UPDATED
On-chip summing requested	N	N
Subarray requested	NONE	NONE
Alternating exposures requested	N	Y
[s] Primary exposure time	0.000000	4
[s] Secondary exposure time	N/A	3.2
Duty cycle	N/A	1

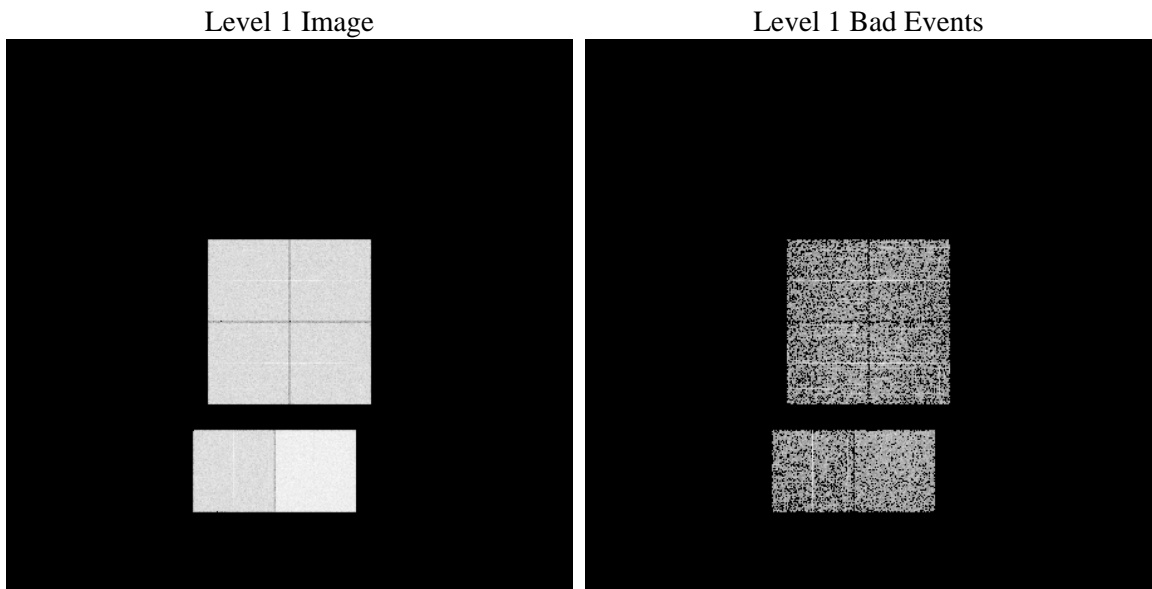
2.3 Star Slots

2.4 FID Slots

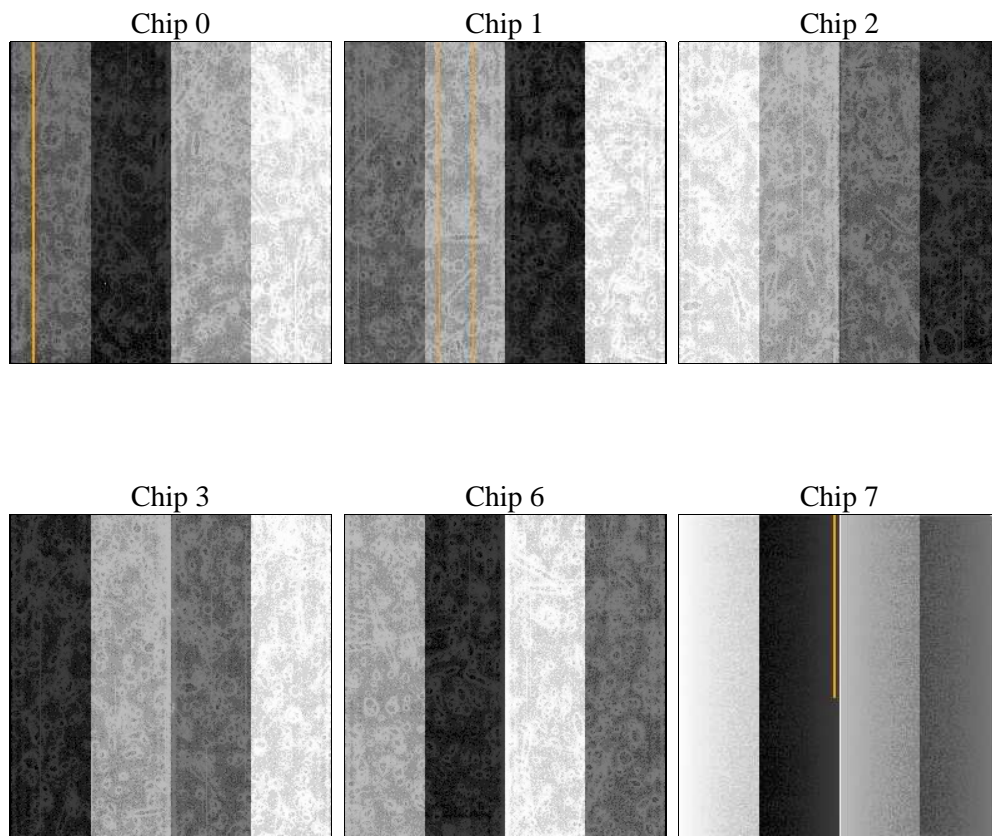
3 OBI Secondary

3.1 OBI

3.1.1 Images



3.1.2 Bias



3.1.3 Parameters

obi_num	0	Obi number		
ascdsver	8.4.5	Processing system revision	sched_exp_time	0.0
caldbver	4.5.1.1	 	ontime	1696.1386836469
date	2012-08-25T09:47:45	Date and time of file creation	ontime0	845.91143774986
revision	5	Processing version of data	ontime1	843.6220459193
			ontime2	837.18100593984
			ontime3	833.98100593686
			ontime6	871.83975768089
			ontime7	1696.1386836469
			l1events	570606

3.1.4 Events

	ccd 0	ccd 1	ccd 2	ccd 3	ccd 6	ccd 7
level 1 events	80430	79844	81149	81610	87002	160571
rejected events	7798	8079	9157	8856	8352	9584
rejected %	9%	10%	11%	10%	9%	5%

	ccd 0	ccd 1	ccd 2	ccd 3	ccd 6	ccd 7
grade 0 events	40219	39840	40403	40855	42699	38569
	50%	49%	49%	50%	49%	24%
grade 1 events	275	223	216	223	257	93
	0%	0%	0%	0%	0%	0%
grade 2 events	12892	12525	12671	12761	13554	33604
	16%	15%	15%	15%	15%	20%
grade 3 events	4532	4541	4497	4613	4976	15620
	5%	5%	5%	5%	5%	9%
grade 4 events	4583	4703	4484	4605	4867	15412
	5%	5%	5%	5%	5%	9%
grade 5 events	596	574	563	588	654	2156
	0%	0%	0%	0%	0%	1%
grade 6 events	10406	10438	10214	10234	12554	48074
	12%	13%	12%	12%	14%	29%
grade 7 events	6927	7000	8101	7731	7441	7043
	8%	8%	9%	9%	8%	4%

A Summary

A.1 Status

V&V Scientist	Jen Lauer
V&V Date (YYYY-MM-DD)	2012.08.28
V&V Edition	1
V&V Disposition and Status	OK
V&V Charge Time	5.3957169887423

A.2 Comments