

V&V Reference Report

L2 ASCDS Version : 8.4.5

Observation 61842 - L2 Version 3
Chandra X-Ray Center

L2 Processing Date : Sep 3 2012

Contents

1	Front	2
2	OBI	3
2.1	OBI	3
2.1.1	Images	3
2.1.2	Bias	3
2.1.3	Parameters	4
2.1.4	Events	4
2.2	Compared Parameters	5
2.3	Star Slots	6
2.4	FID Slots	6
A	Summary	7
A.1	Status	7
A.2	Comments	7

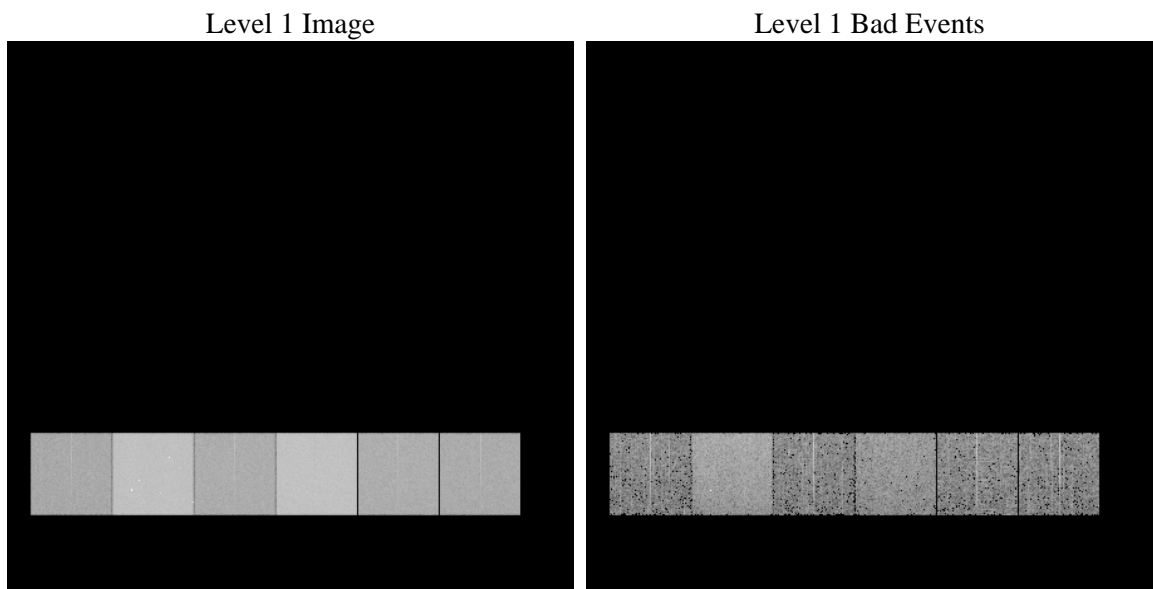
1 Front

seq_num	 	Sequence number
obs_id	61842	Observation id
title	ACIS-456789 diagnostics	Proposal title
observer	CHANDRA engineering request/realtime commanding	Principal investig
object	 	Source name
dtcycle	0	
cycle	P	events from which exps? Prim/Second/Both
ra_targ	0.0	Observer's specified target RA [deg]
dec_targ	0.0	Observer's specified target Dec [deg]
ra_nom	208.55841778732	Nominal RA [deg]
dec_nom	69.405399072038	Nominal Dec [deg]
roll_nom	29.373102405731	Nominal Roll [deg]
revision	3	Processing version of data
ontime	5059.2360017747	Sum of GTIs [s]
livetime	4995.172909214	Livetime [s]
ontime4	2109.9152597487	Sum of GTIs [s]
ontime5	5393.3793827295	Sum of GTIs [s]
ontime6	2314.1008689851	Sum of GTIs [s]
ontime7	5059.2360017747	Sum of GTIs [s]
ontime8	2362.9173669815	Sum of GTIs [s]
ontime9	2226.5925897658	Sum of GTIs [s]
l2events	1345657	Number of level 2 events

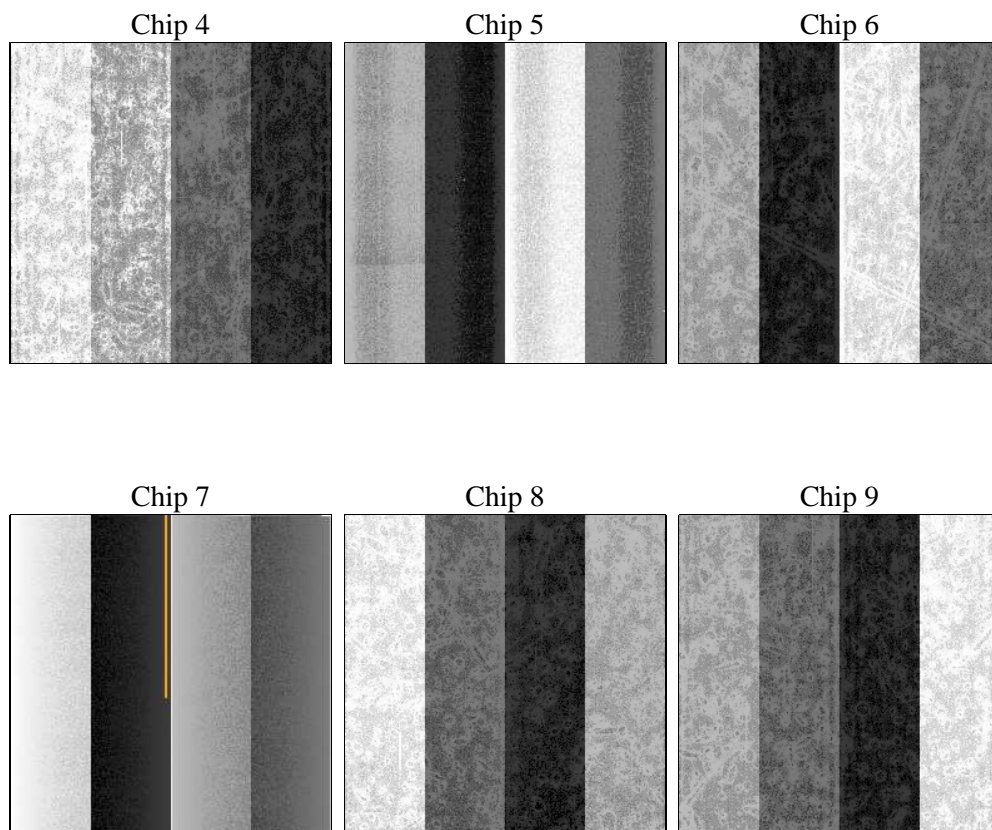
2 OBI

2.1 OBI

2.1.1 Images



2.1.2 Bias



2.1.3 Parameters

obi_num	1	Obi number	sched_exp_time	0.0	[s] Scheduled observation exposure time
ascdsver	8.4.5	Processing system revision	ontime	5059.2360017747	Sum of GTIs [s]
caldsver	4.5.1.1	 	ontime4	2109.9152597487	Sum of GTIs [s]
date	2012-09-03T21:51:21	Date and time of file creation	ontime5	5393.3793827295	Sum of GTIs [s]
revision	3	Processing version of data	ontime6	2314.1008689851	Sum of GTIs [s]
			ontime7	5059.2360017747	Sum of GTIs [s]
			ontime8	2362.9173669815	Sum of GTIs [s]
			ontime9	2226.5925897658	Sum of GTIs [s]
			l1events	1554321	Number of level 1 events

2.1.4 Events

	ccd 4	ccd 5	ccd 6	ccd 7	ccd 8	ccd 9		ccd 4	ccd 5	ccd 6	ccd 7	ccd 8	ccd 9
level 1 events	169963	394318	196445	407666	201935	183994	grade 0 events	86487	88094	97471	98116	101299	90987
rejected events	19552	42362	19281	27937	20733	19338		50%	22%	49%	24%	50%	49%
rejected %	11%	10%	9%	6%	10%	10%	grade 1 events	460	306	523	251	504	454
								0%	0%	0%	0%	0%	0%
							grade 2 events	26626	126590	30825	84574	32007	29125
								15%	32%	15%	20%	15%	15%
							grade 3 events	9065	23109	11044	39022	11354	10368
								5%	5%	5%	9%	5%	5%
							grade 4 events	9016	22641	10955	38920	11262	10277
								5%	5%	5%	9%	5%	5%
							grade 5 events	1243	8017	1422	5479	1553	1508
								0%	2%	0%	1%	0%	0%
							grade 6 events	20365	94448	28330	122206	26778	25311
								11%	23%	14%	29%	13%	13%
							grade 7 events	16701	31113	15875	19098	17178	15964
								9%	7%	8%	4%	8%	8%

2.2 Compared Parameters

Parameter	Planned	Actual
Instrument	ACIS	ACIS
Detector	ACIS-456789	ACIS-456789
Grating	NONE	NONE
Data mode	FAINT	FAINT
Observation mode	SECONDARY	SECONDARY
[deg] Pointing RA	0	208.5584177873207
[deg] Pointing Dec	0	69.40539907203816
[deg] Pointing Roll	0.0	29.37310240573089
[mm] SIM focus pos	-0.684267	-0.7809083437167272
[mm] SIM defocus	0	0.7524282956875696
[mm] SIM translation stage pos	-190.132523	250.466033080201
[mm] SIM translation stage offset	0	-0.01005468664627074
[s] Observation start time (MET)	91421041.832	91421041.06362499
Observation start date	2000-11-24T02:44:02	2000-11-24T02:44:01
[s] Observation end time (MET)	91431552.183	91431551.41402701
Observation end date	2000-11-24T05:39:12	2000-11-24T05:39:11
Read mode	TIMED	TIMED

Parameter	Planned	Actual
Obspar format version number	7	7
Obspar file type	PREDICTED	ACTUAL
Obspar update status	NONE	UPDATED
On-chip summing requested	N	N
Subarray requested	NONE	NONE
Alternating exposures requested	N	N
[s] Primary exposure time	0.000000	3.2

2.3 Star Slots

2.4 FID Slots

A Summary

A.1 Status

V&V Scientist	Beth Sundheim
V&V Date (YYYY-MM-DD)	2012.09.11
V&V Edition	1
V&V Disposition and Status	OK
V&V Charge Time	5.0592360017747

A.2 Comments