

V&V Reference Report

L2 ASCDS Version : 8.4.5

Observation 61782 - L2 Version 4
Chandra X-Ray Center

L2 Processing Date : Sep 6 2012

Contents

1	Front	2
2	OBI	3
2.1	OBI	3
2.1.1	Images	3
2.1.2	Bias	3
2.1.3	Parameters	4
2.1.4	Events	4
2.2	Compared Parameters	5
2.3	Star Slots	6
2.4	FID Slots	6
A	Summary	7
A.1	Status	7
A.2	Comments	7

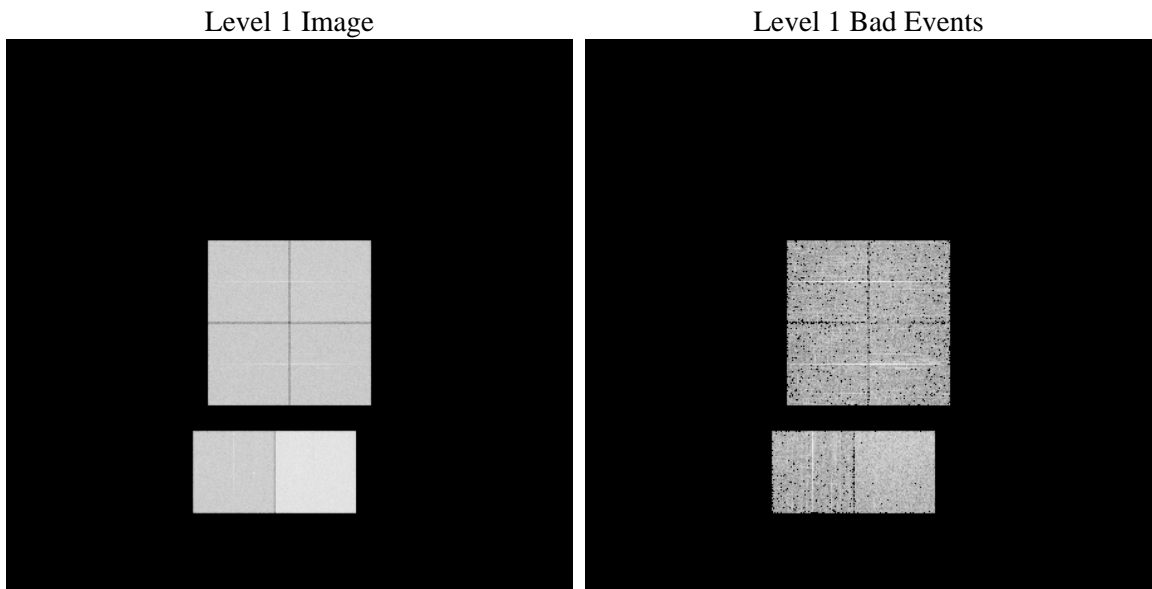
1 Front

seq_num	 	Sequence number
obs_id	61782	Observation id
title	ACIS-012367 diagnostics	Proposal title
observer	CHANDRA engineering request/realtime commanding	Principal investig
object	 	Source name
dtcycle	0	
cycle	P	events from which exps? Prim/Second/Both
ra_targ	0.0	Observer's specified target RA [deg]
dec_targ	0.0	Observer's specified target Dec [deg]
ra_nom	353.99115490148	Nominal RA [deg]
dec_nom	32.408544420116	Nominal Dec [deg]
roll_nom	303.88688000809	Nominal Roll [deg]
revision	4	Processing version of data
ontime	6246.2812463939	Sum of GTIs [s]
livetime	6167.1870721931	Livetime [s]
ontime0	2673.6969648302	Sum of GTIs [s]
ontime1	2752.4940900207	Sum of GTIs [s]
ontime2	2553.8609439731	Sum of GTIs [s]
ontime3	2540.7325342298	Sum of GTIs [s]
ontime6	2803.4615249485	Sum of GTIs [s]
ontime7	6246.2812463939	Sum of GTIs [s]
l2events	1358792	Number of level 2 events

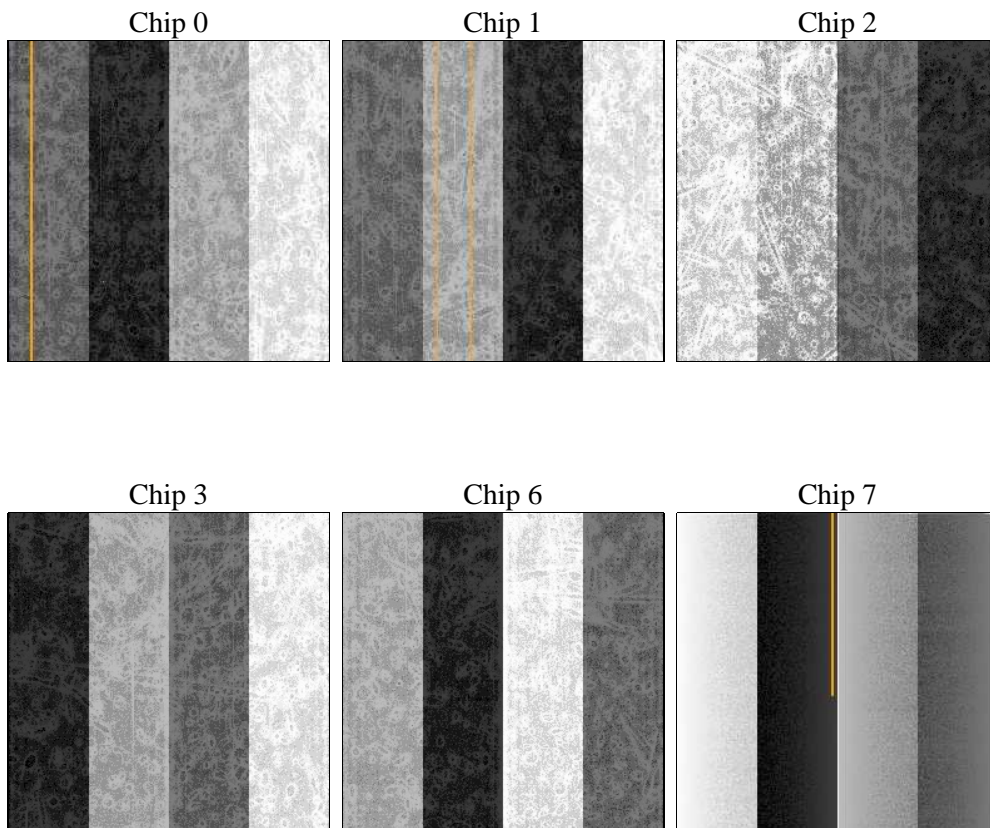
2 OBI

2.1 OBI

2.1.1 Images



2.1.2 Bias



2.1.3 Parameters

obi_num	0	Obi number	sched_exp_time	0.0	[s] Scheduled observation exposure time
ascdsver	8.4.5	Processing system revision	ontime	6246.2812463939	Sum of GTIs [s]
caldbver	4.5.1.1	 	ontime0	2673.6969648302	Sum of GTIs [s]
date	2012-09-06T14:25:21	Date and time of file creation	ontime1	2752.4940900207	Sum of GTIs [s]
revision	4	Processing version of data	ontime2	2553.8609439731	Sum of GTIs [s]
			ontime3	2540.7325342298	Sum of GTIs [s]
			ontime6	2803.4615249485	Sum of GTIs [s]
			ontime7	6246.2812463939	Sum of GTIs [s]
			l1events	1551192	Number of level 1 events

2.1.4 Events

	ccd 0	ccd 1	ccd 2	ccd 3	ccd 6	ccd 7		ccd 0	ccd 1	ccd 2	ccd 3	ccd 6	ccd 7
level 1 events	210081	216634	203045	203548	230183	487701	grade 0 events	104520	108510	102321	102378	113845	116855
rejected events	20113	20546	19583	21011	21238	31554		49%	50%	50%	50%	49%	23%
rejected %	9%	9%	9%	10%	9%	6%	grade 1 events	545	520	530	561	588	334
								0%	0%	0%	0%	0%	0%
							grade 2 events	33652	34468	32105	31624	36209	101243
								16%	15%	15%	15%	15%	20%
							grade 3 events	12138	12366	11575	11638	12766	46392
								5%	5%	5%	5%	5%	9%
							grade 4 events	12040	12363	11463	11459	12936	45999
								5%	5%	5%	5%	5%	9%
							grade 5 events	1527	1491	1452	1512	1738	6927
								0%	0%	0%	0%	0%	1%
							grade 6 events	27618	28628	25998	25438	33189	145892
								13%	13%	12%	12%	14%	29%
							grade 7 events	18041	18288	17601	18938	18912	24059
								8%	8%	8%	9%	8%	4%

2.2 Compared Parameters

Parameter	Planned	Actual
Instrument	ACIS	ACIS
Detector	ACIS-012367	ACIS-012367
Grating	NONE	NONE
Data mode	FAINT	FAINT
Observation mode	SECONDARY	SECONDARY
[deg] Pointing RA	0	353.9911549014811
[deg] Pointing Dec	0	32.40854442011639
[deg] Pointing Roll	0.0	303.8868800080885
[mm] SIM focus pos	-0.782348	-0.6828225247311905
[mm] SIM defocus	0	0.8505141146731063
[mm] SIM translation stage pos	-233.592463	250.4635187648994
[mm] SIM translation stage offset	0	-0.007540371344731511
[s] Observation start time (MET)	95518348.289	95518347.52035999
Observation start date	2001-01-10T12:52:28	2001-01-10T12:52:27
[s] Observation end time (MET)	95540820.39	95540819.621222
Observation end date	2001-01-10T19:07:00	2001-01-10T19:06:59
Read mode	TIMED	TIMED

Parameter	Planned	Actual
Obspar format version number	7	7
Obspar file type	PREDICTED	ACTUAL
Obspar update status	NONE	UPDATED
On-chip summing requested	N	N
Subarray requested	NONE	NONE
Alternating exposures requested	N	N
[s] Primary exposure time	0.000000	3.2

2.3 Star Slots

2.4 FID Slots

A Summary

A.1 Status

V&V Scientist	Jen Lauer
V&V Date (YYYY-MM-DD)	2012.09.17
V&V Edition	1
V&V Disposition and Status	OK
V&V Charge Time	6.2462812463939

A.2 Comments