

# V&V Reference Report

## L2 ASCDS Version : 7.6.9

Observation 61672 - L2 Version 001  
Chandra X-Ray Center

L2 Processing Date : Nov 13 2006

## Contents

<b>1</b>	<b>Front</b>	<b>2</b>
<b>2</b>	<b>OBI</b>	<b>3</b>
2.1	OBI . . . . .	3
2.1.1	Images . . . . .	3
2.1.2	Bias . . . . .	3
2.1.3	Parameters . . . . .	4
2.1.4	Events . . . . .	4
2.2	Compared Parameters . . . . .	5
2.3	Aspect . . . . .	6
2.4	Star Slots . . . . .	8
2.5	FID Slots . . . . .	8
<b>A</b>	<b>Summary</b>	<b>9</b>
A.1	Status . . . . .	9
A.2	Comments . . . . .	9

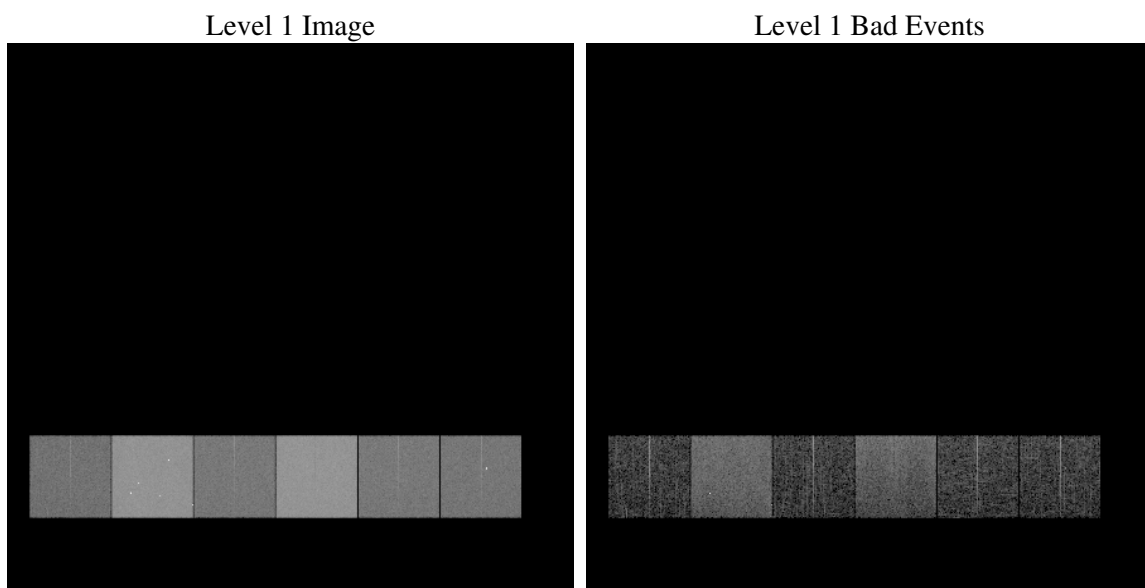
# 1 Front

seq_num	&#160
obs_id	61672
title	ACIS-456789 diagnostics
observer	CHANDRA engineering request/realtime commanding
object	&#160
dtcycle	0
cycle	P
ra_targ	0.0
dec_targ	0.0
ra_nom	99.012647039043
dec_nom	-29.026464677304
roll_nom	260.07614292898
revision	2
ontime	5628.3230037242
livetime	5557.0537888818
ontime4	2192.8441842943
ontime5	6004.2743014991
ontime6	2455.3839203417
ontime7	5628.3230037242
ontime8	2479.3933503926
ontime9	2404.7010065317
l2events	1307959

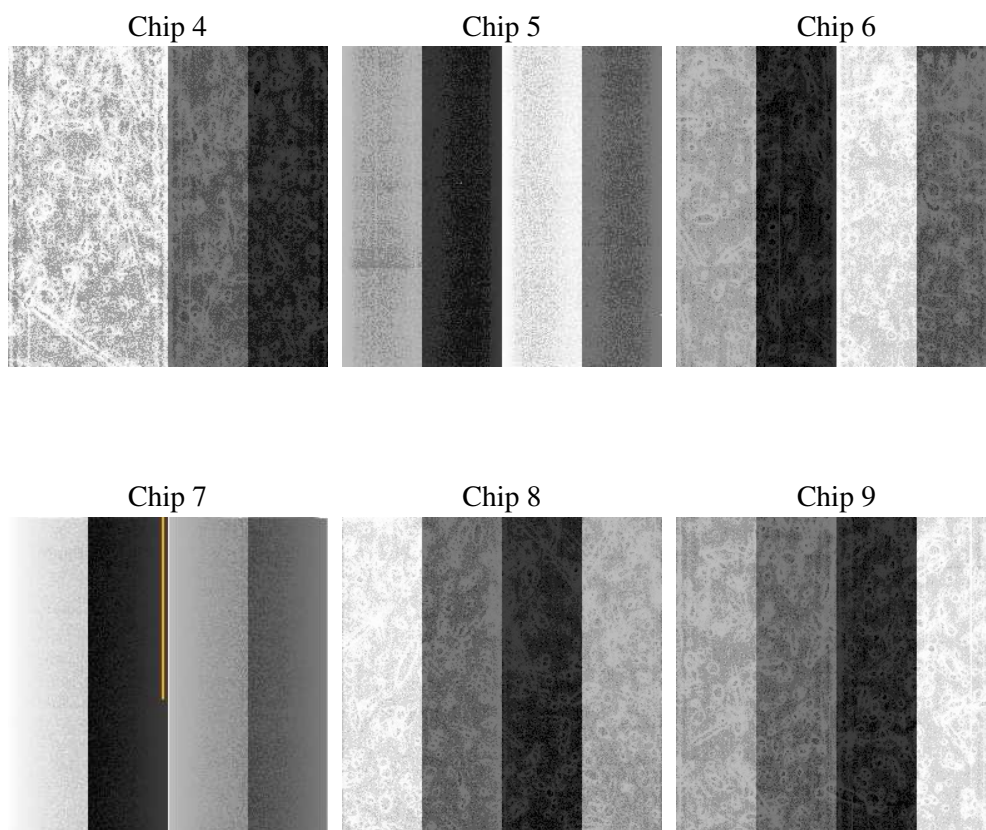
## 2 OBI

### 2.1 OBI

#### 2.1.1 Images



#### 2.1.2 Bias



### 2.1.3 Parameters

obi_num	1
ascdsver	7.6.9
caldsver	3.2.4
date	2006-11-13T16:50:08
revision	2

sched_exp_time	0.0
ontime	5681.5015145391
ontime4	2210.3871905655
ontime5	6063.9348026365
ontime6	2479.3934102058
ontime7	5681.5015145391
ontime8	2498.8395903409
ontime9	2421.0547700971
l1events	1552023

### 2.1.4 Events

	ccd 4	ccd 5	ccd 6	ccd 7	ccd 8	ccd 9
level 1 events	161069	406234	192038	416418	194127	182137
rejected events	19980	56704	20473	44406	21699	20085
rejected %	12%	13%	10%	10%	11%	11%

	ccd 4	ccd 5	ccd 6	ccd 7	ccd 8	ccd 9
grade 0 events	80370	46358	94425	70950	96022	90085
	49%	11%	49%	17%	49%	49%
grade 1 events	455	147	462	166	462	466
	0%	0%	0%	0%	0%	0%
grade 2 events	25033	168704	29917	111336	30409	28465
	15%	41%	15%	26%	15%	15%
grade 3 events	8857	12040	10736	28540	11067	10093
	5%	2%	5%	6%	5%	5%
grade 4 events	8736	11853	10630	28431	10834	9889
	5%	2%	5%	6%	5%	5%
grade 5 events	1260	6804	1531	6086	1611	1504
	0%	1%	0%	1%	0%	0%
grade 6 events	19118	113908	27351	136255	25442	24594
	11%	28%	14%	32%	13%	13%
grade 7 events	17240	46420	16986	34654	18280	17041
	10%	11%	8%	8%	9%	9%

## 2.2 Compared Parameters

Parameter	Planned	Actual	Parameter	Planned	Actual
Instrument	ACIS	ACIS	Obspar format version number	6	6
Detector	ACIS-456789	ACIS-456789	Obspar file type	PREDICTED	ACTUAL
Grating	NONE	NONE	Obspar update status	NONE	UPDATED
Data mode	FAINT	FAINT	On-chip summing requested	N	N
Observation mode	SECONDARY	SECONDARY	Subarray requested	NONE	NONE
Pointing RA	0	99.0126470390428	Alternating exposures requested	N	N
Pointing Dec	0	-29.02646467730448	Primary exposure time	0.000000	3.2
Pointing Roll	0.0	260.0761429289797			
SIM focus pos (mm)	-0.684267	-0.6828225247311905			
SIM defocus (mm)	0	0.8505141146731063			
SIM translation stage pos (mm)	-190.132523	250.466033080201			
SIM translation stage offset (mm)	0	-0.01005468664627074			
Observation start time	103071555.13	103071554.36179			
Observation start date	2001-04-07T22:59:15	2001-04-07T22:59:14			
Observation end time	103082065.481	103082064.7122			
Observation end date	2001-04-08T01:54:25	2001-04-08T01:54:24			
Read mode	TIMED	TIMED			

## 2.3 Aspect



## **2.4 Star Slots**

## **2.5 FID Slots**



## A Summary

### A.1 Status

V&V Scientist	Jen Lauer
V&V Date (YYYY-MM-DD)	2006.11.13
V&V Edition	1
V&V Disposition and Status	OK
V&V Charge Time	5.628323

### A.2 Comments