

# V&V Reference Report

## L2 ASCDS Version : 7.6.9

Observation 61632 - L2 Version 001  
Chandra X-Ray Center

L2 Processing Date : Nov 21 2006

## Contents

<b>1</b>	<b>Front</b>	<b>2</b>
<b>2</b>	<b>OBI</b>	<b>3</b>
2.1	OBI . . . . .	3
2.1.1	Images . . . . .	3
2.1.2	Bias . . . . .	3
2.1.3	Parameters . . . . .	4
2.1.4	Events . . . . .	4
2.2	Compared Parameters . . . . .	5
2.3	Aspect . . . . .	6
2.4	Star Slots . . . . .	8
2.5	FID Slots . . . . .	8
<b>A</b>	<b>Summary</b>	<b>9</b>
A.1	Status . . . . .	9
A.2	Comments . . . . .	9

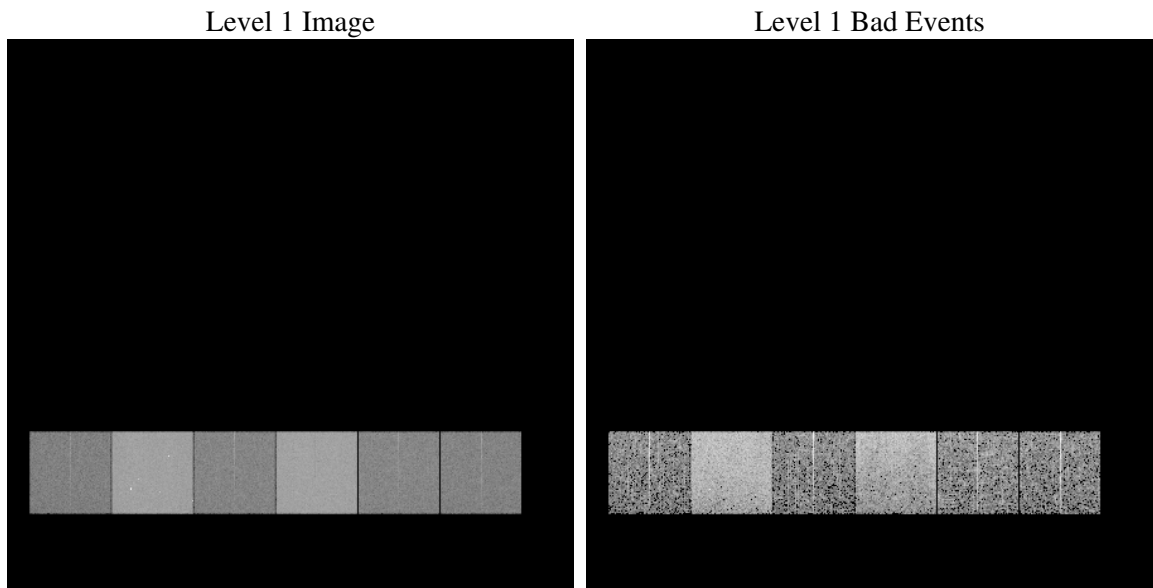
# 1 Front

seq_num	&#160
obs_id	61632
title	ACIS-456789 diagnostics
observer	CHANDRA engineering request/realtime commanding
object	&#160
dtcycle	0
cycle	P
ra_targ	0.0
dec_targ	0.0
ra_nom	309.95341106412
dec_nom	60.016696979189
roll_nom	111.69255498067
revision	2
ontime	4057.6386148036
livetime	4006.2583514463
ontime4	1644.7753329575
ontime5	4365.5291889757
ontime6	1764.6527427286
ontime7	4057.6386148036
ontime8	1793.904212594
ontime9	1724.1184807867
l2events	937724

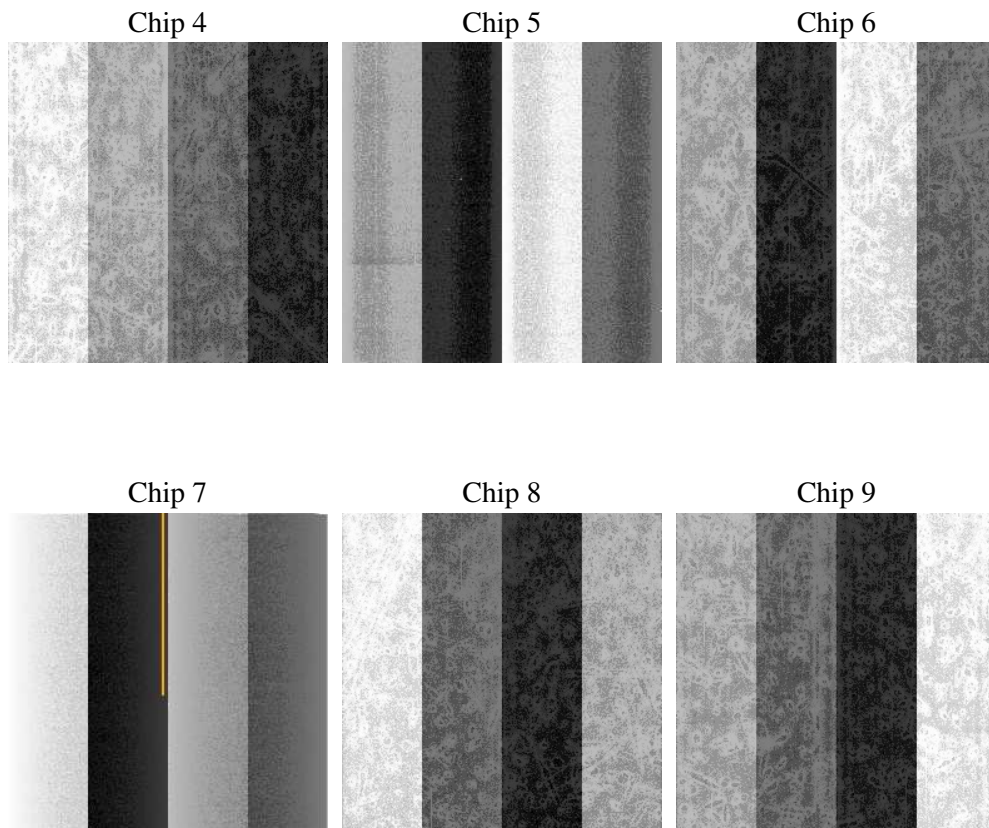
## 2 OBI

### 2.1 OBI

#### 2.1.1 Images



#### 2.1.2 Bias



### 2.1.3 Parameters

obi_num	0
ascdsver	7.6.9
caldsver	3.2.4
date	2006-11-21T22:28:24
revision	2

sched_exp_time	0.0
ontime	4060.9923958927
ontime4	1646.4461524189
ontime5	4368.8829700649
ontime6	1766.3646021932
ontime7	4060.9923958927
ontime8	1795.5339920521
ontime9	1727.4722618759
l1events	1107166

### 2.1.4 Events

	ccd 4	ccd 5	ccd 6	ccd 7	ccd 8	ccd 9
level 1 events	118462	289825	135251	296465	139527	127636
rejected events	13849	38058	14217	30219	16109	14275
rejected %	11%	13%	10%	10%	11%	11%

	ccd 4	ccd 5	ccd 6	ccd 7	ccd 8	ccd 9
grade 0 events	59104	34156	66035	50926	67935	62403
	49%	11%	48%	17%	48%	48%
grade 1 events	350	155	323	123	353	339
	0%	0%	0%	0%	0%	0%
grade 2 events	18754	119482	21049	78919	21652	20010
	15%	41%	15%	26%	15%	15%
grade 3 events	6455	9340	7428	20522	7774	7107
	5%	3%	5%	6%	5%	5%
grade 4 events	6307	9202	7562	20222	7954	6956
	5%	3%	5%	6%	5%	5%
grade 5 events	983	4625	1092	4373	1106	1014
	0%	1%	0%	1%	0%	0%
grade 6 events	14183	79778	19202	95874	18307	17108
	11%	27%	14%	32%	13%	13%
grade 7 events	12326	33087	12560	25506	14446	12699
	10%	11%	9%	8%	10%	9%

## 2.2 Compared Parameters

Parameter	Planned	Actual	Parameter	Planned	Actual
Instrument	ACIS	ACIS	Obspar format version number	6	6
Detector	ACIS-456789	ACIS-456789	Obspar file type	PREDICTED	ACTUAL
Grating	NONE	NONE	Obspar update status	NONE	UPDATED
Data mode	FAINT	FAINT	On-chip summing requested	N	N
Observation mode	SECONDARY	SECONDARY	Subarray requested	NONE	NONE
Pointing RA	0	309.9534110641228	Alternating exposures requested	N	N
Pointing Dec	0	60.01669697918903	Primary exposure time	3.2	3.2
Pointing Roll	0.0	111.692554980667			
SIM focus pos (mm)	-0.684267	-0.7809083437167272			
SIM defocus (mm)	0	0.7524282956875696			
SIM translation stage pos (mm)	-190.132523	250.466033080201			
SIM translation stage offset (mm)	0	-0.01005468664627074			
Observation start time	106452706.361441	106452705.59298			
Observation start date	2001-05-17T02:11:46	2001-05-17T02:11:45			
Observation end time	106462214.26181	106462213.49334			
Observation end date	2001-05-17T04:50:14	2001-05-17T04:50:13			
Read mode	TIMED	TIMED			

## 2.3 Aspect



## 2.4 Star Slots

## 2.5 FID Slots

## A Summary

### A.1 Status

V&V Scientist	Jen Lauer
V&V Date (YYYY-MM-DD)	2006.11.22
V&V Edition	1
V&V Disposition and Status	OK
V&V Charge Time	4.05763861

### A.2 Comments