

# V&V Reference Report

## L2 ASCDS Version : 7.6.9

Observation 61622 - L2 Version 001  
Chandra X-Ray Center

L2 Processing Date : Nov 21 2006

## Contents

<b>1</b>	<b>Front</b>	<b>2</b>
<b>2</b>	<b>OBI</b>	<b>3</b>
2.1	OBI . . . . .	3
2.1.1	Images . . . . .	3
2.1.2	Bias . . . . .	3
2.1.3	Parameters . . . . .	4
2.1.4	Events . . . . .	4
2.2	Compared Parameters . . . . .	5
2.3	Aspect . . . . .	6
2.4	Star Slots . . . . .	8
2.5	FID Slots . . . . .	8
<b>A</b>	<b>Summary</b>	<b>9</b>
A.1	Status . . . . .	9
A.2	Comments . . . . .	9

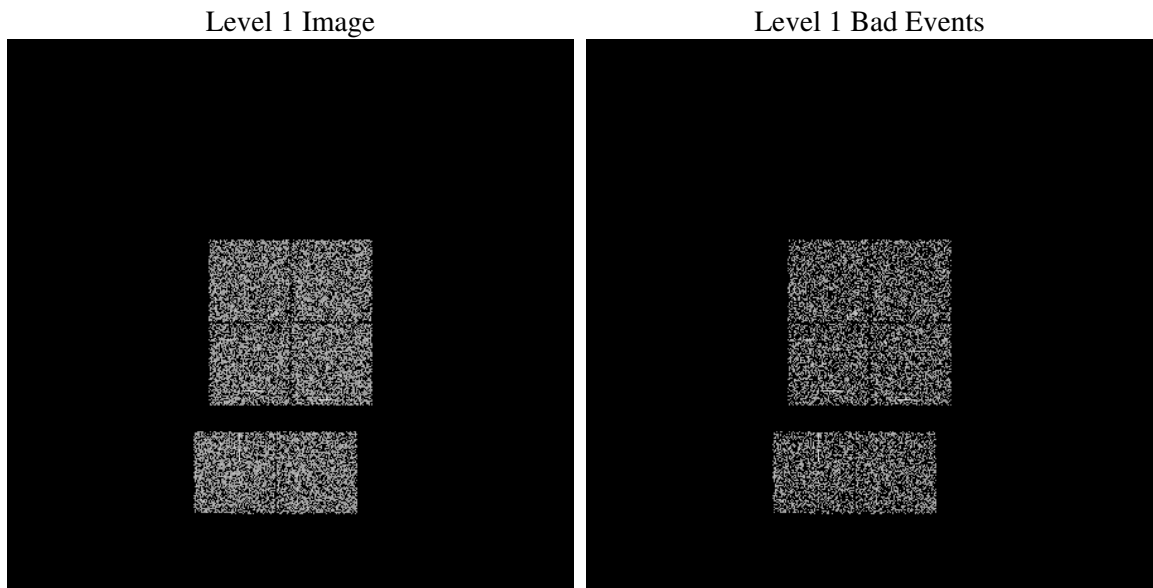
# 1 Front

seq_num	&#160
obs_id	61622
title	ACIS-012367 diagnostics
observer	CHANDRA engineering request/realtime commanding
object	&#160
dtcycle	0
cycle	P
ra_targ	0.0
dec_targ	0.0
ra_nom	96.9900513158
dec_nom	-31.027622380953
roll_nom	220.21035222758
revision	2
ontime	19.200000017881
livetime	18.956878056803
ontime0	19.200000017881
ontime1	19.200000017881
ontime2	19.200000017881
ontime3	19.200000017881
ontime6	19.200000017881
ontime7	19.200000017881
l2events	7371

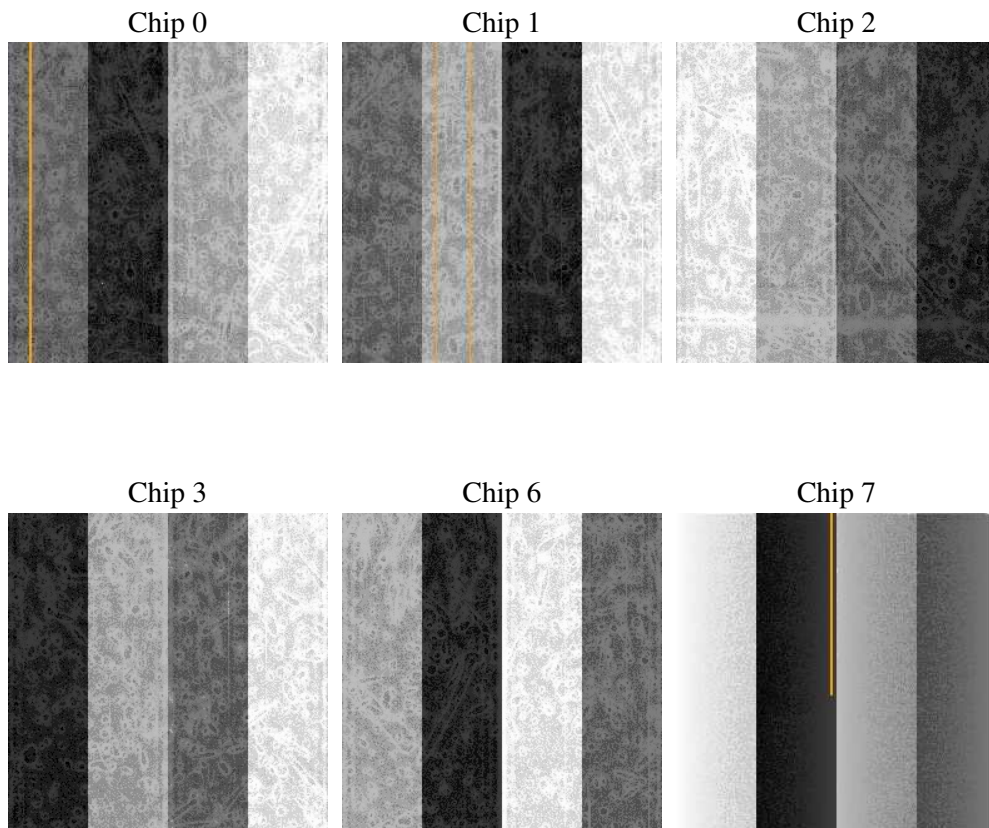
## 2 OBI

### 2.1 OBI

#### 2.1.1 Images



#### 2.1.2 Bias



### 2.1.3 Parameters

obi_num	0
ascdsver	7.6.9
caldbver	3.2.4
date	2006-11-21T23:29:40
revision	2

sched_exp_time	0.0
ontime	51.856101840734
ontime0	51.856101840734
ontime1	51.856101840734
ontime2	51.856101840734
ontime3	51.856101840734
ontime6	51.856101840734
ontime7	51.856101840734
l1events	22881

### 2.1.4 Events

	ccd 0	ccd 1	ccd 2	ccd 3	ccd 6	ccd 7
level 1 events	3660	3760	3814	3892	3958	3797
rejected events	2412	2395	2607	2594	2617	2489
rejected %	65%	63%	68%	66%	66%	65%

	ccd 0	ccd 1	ccd 2	ccd 3	ccd 6	ccd 7
grade 0 events	1837	1898	1819	1879	1962	662
	50%	50%	47%	48%	49%	17%
grade 1 events	7	11	17	12	16	3
	0%	0%	0%	0%	0%	0%
grade 2 events	572	550	592	611	611	1047
	15%	14%	15%	15%	15%	27%
grade 3 events	219	238	209	195	224	279
	5%	6%	5%	5%	5%	7%
grade 4 events	203	209	197	224	205	270
	5%	5%	5%	5%	5%	7%
grade 5 events	22	26	28	24	32	60
	0%	0%	0%	0%	0%	1%
grade 6 events	476	513	485	472	520	1169
	13%	13%	12%	12%	13%	30%
grade 7 events	324	315	467	475	388	307
	8%	8%	12%	12%	9%	8%

## 2.2 Compared Parameters

Parameter	Planned	Actual	Parameter	Planned	Actual
Instrument	ACIS	ACIS	Obspar format version number	6	6
Detector	ACIS-012367	ACIS-012367	Obspar file type	PREDICTED	ACTUAL
Grating	NONE	NONE	Obspar update status	NONE	UPDATED
Data mode	FAINT	FAINT	On-chip summing requested	N	N
Observation mode	SECONDARY	SECONDARY	Subarray requested	NONE	NONE
Pointing RA	0	96.99005131580003	Alternating exposures requested	N	N
Pointing Dec	0	-31.02762238095259	Primary exposure time	3.2	3.2
Pointing Roll	0.0	220.2103522275754			
SIM focus pos (mm)	-0.782348	-0.6828225247311905			
SIM defocus (mm)	0	0.8505141146731063			
SIM translation stage pos (mm)	-233.592463	250.4635187648994			
SIM translation stage offset (mm)	0	-0.007540371344731511			
Observation start time	106908825.229169	106908824.46072			
Observation start date	2001-05-22T08:53:45	2001-05-22T08:53:44			
Observation end time	106910616.929255	106910616.16079			
Observation end date	2001-05-22T09:23:37	2001-05-22T09:23:36			
Read mode	TIMED	TIMED			

## 2.3 Aspect



## **2.4 Star Slots**

## **2.5 FID Slots**



## A Summary

### A.1 Status

V&V Scientist	Jen Lauer
V&V Date (YYYY-MM-DD)	2006.11.22
V&V Edition	1
V&V Disposition and Status	OK
V&V Charge Time	0.0192

### A.2 Comments