

V&V Reference Report

L2 ASCDS Version : 8.5

Observation 6132 - L2 Version 4
Chandra X-Ray Center

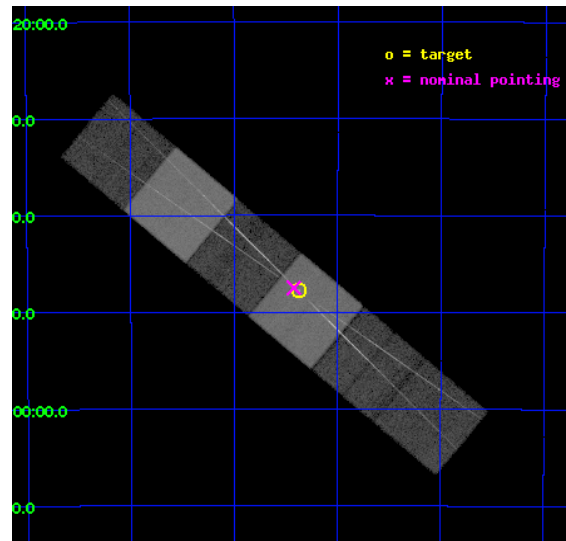
L2 Processing Date : Dec 10 2012

Contents

1	Front	2
2	OBI	3
2.1	OBI	3
2.1.1	Images	3
2.1.2	Bias	3
2.1.3	Parameters	4
2.1.4	Events	4
2.2	Compared Parameters	5
2.3	Aspect	6
2.4	Star Slots	9
2.4.1	Slot 3	9
2.4.2	Slot 4	10
2.4.3	Slot 5	11
2.4.4	Slot 6	12
2.4.5	Slot 7	13
2.5	FID Slots	14
2.5.1	Slot 0	14
2.5.2	Slot 1	15
2.5.3	Slot 2	16
3	Gratings	17
3.1	HEG Arm	17
3.2	MEG Arm	19
A	Summary	21
A.1	Status	21
A.2	Comments	21

1 Front

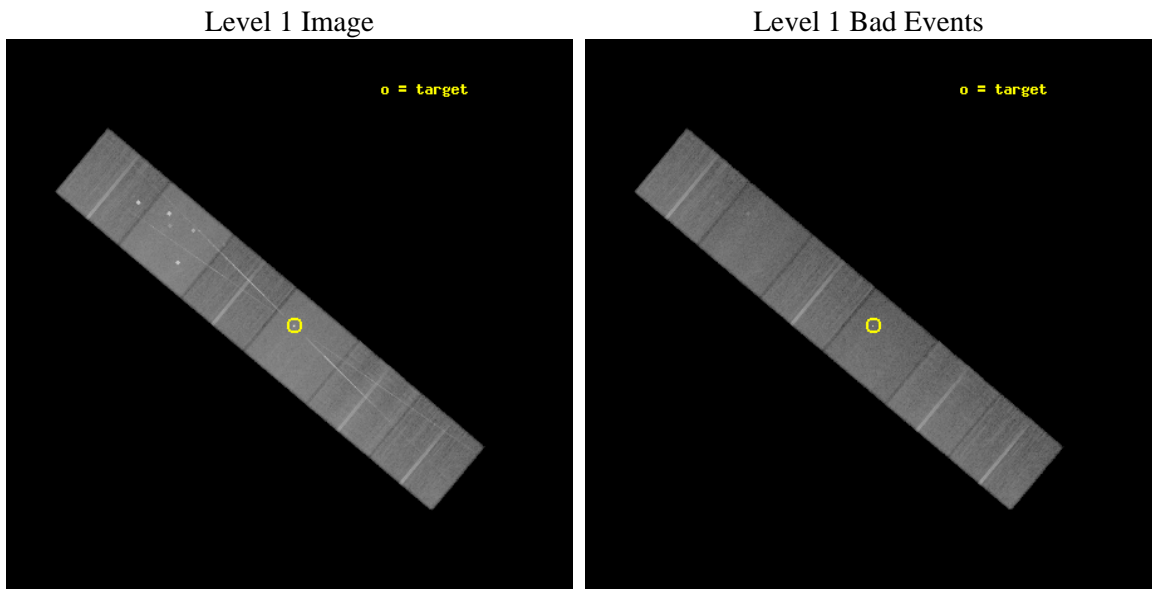
seq_num	200282	Sequence number
obs_id	6132	Observation id
title	From Photosphere to Corona: Magnetic Fields and Coronal Emission from the Active Binary CC Eridani	Proposal title
observer	Dr. rachel osten	Principal investigator
object	CC Eri	Source name
dtcycle	0	
cycle	P	events from which exps? Prim/Second/Both
ra_targ	38.594167	Observer's specified target RA [deg]
dec_targ	-43.796361	Observer's specified target Dec [deg]
ra_nom	38.605761417135	Nominal RA [deg]
dec_nom	-43.791543161904	Nominal Dec [deg]
roll_nom	39.9146497114	Nominal Roll [deg]
revision	4	Processing version of data
ontime	30953.384815454	Sum of GTIs [s]
livetime	30561.43441903	Livetime [s]
ontime4	30953.425855458	Sum of GTIs [s]
ontime5	30953.343775451	Sum of GTIs [s]
ontime6	30953.302735448	Sum of GTIs [s]
ontime7	30953.384815454	Sum of GTIs [s]
ontime8	30953.261695445	Sum of GTIs [s]
ontime9	30953.220655471	Sum of GTIs [s]
l2events	426939	Number of level 2 events



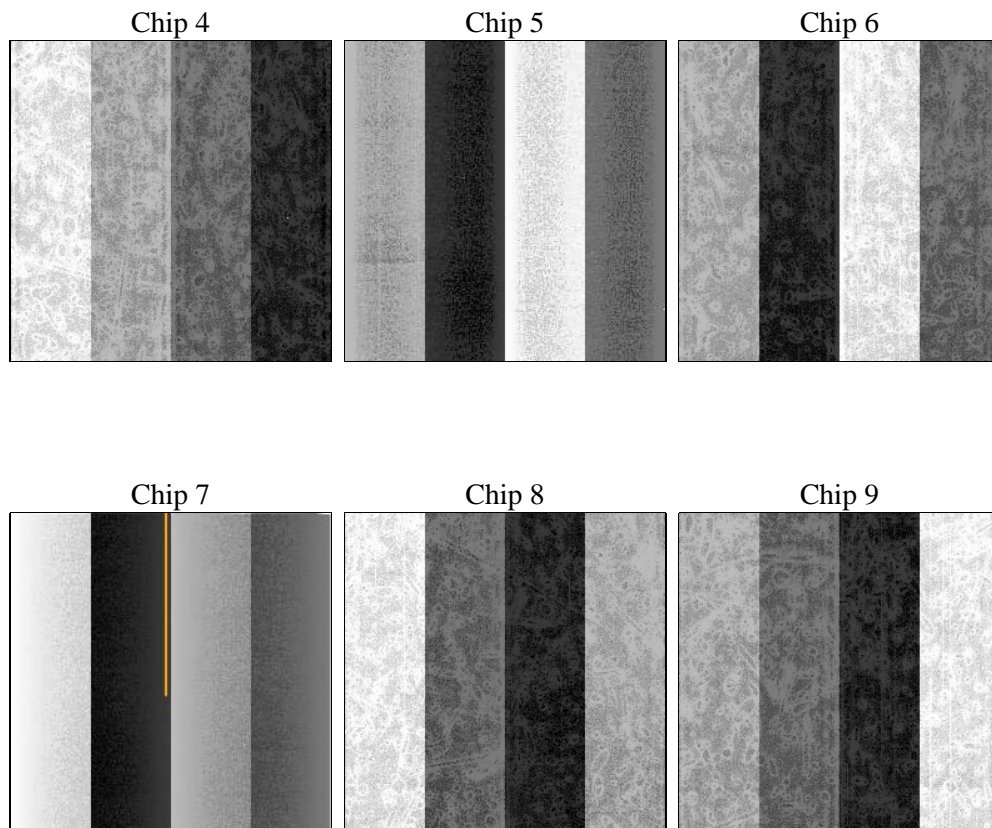
2 OBI

2.1 OBI

2.1.1 Images



2.1.2 Bias



2.1.3 Parameters

obi_num	0	Obi number	sched_exp_time	31000.000000	[s] Scheduled observation exposure time
ascdsver	8.5	Processing system revision	ontime	30953.384815454	Sum of GTIs [s]
caldsver	4.5.4	 	ontime4	30953.425855458	Sum of GTIs [s]
date	2012-12-10T12:20:52	Date and time of file creation	ontime5	30953.343775451	Sum of GTIs [s]
revision	4	Processing version of data	ontime6	30953.302735448	Sum of GTIs [s]
			ontime7	30953.384815454	Sum of GTIs [s]
			ontime8	30953.261695445	Sum of GTIs [s]
			ontime9	30953.220655471	Sum of GTIs [s]
			l1events	1773189	Number of level 1 events

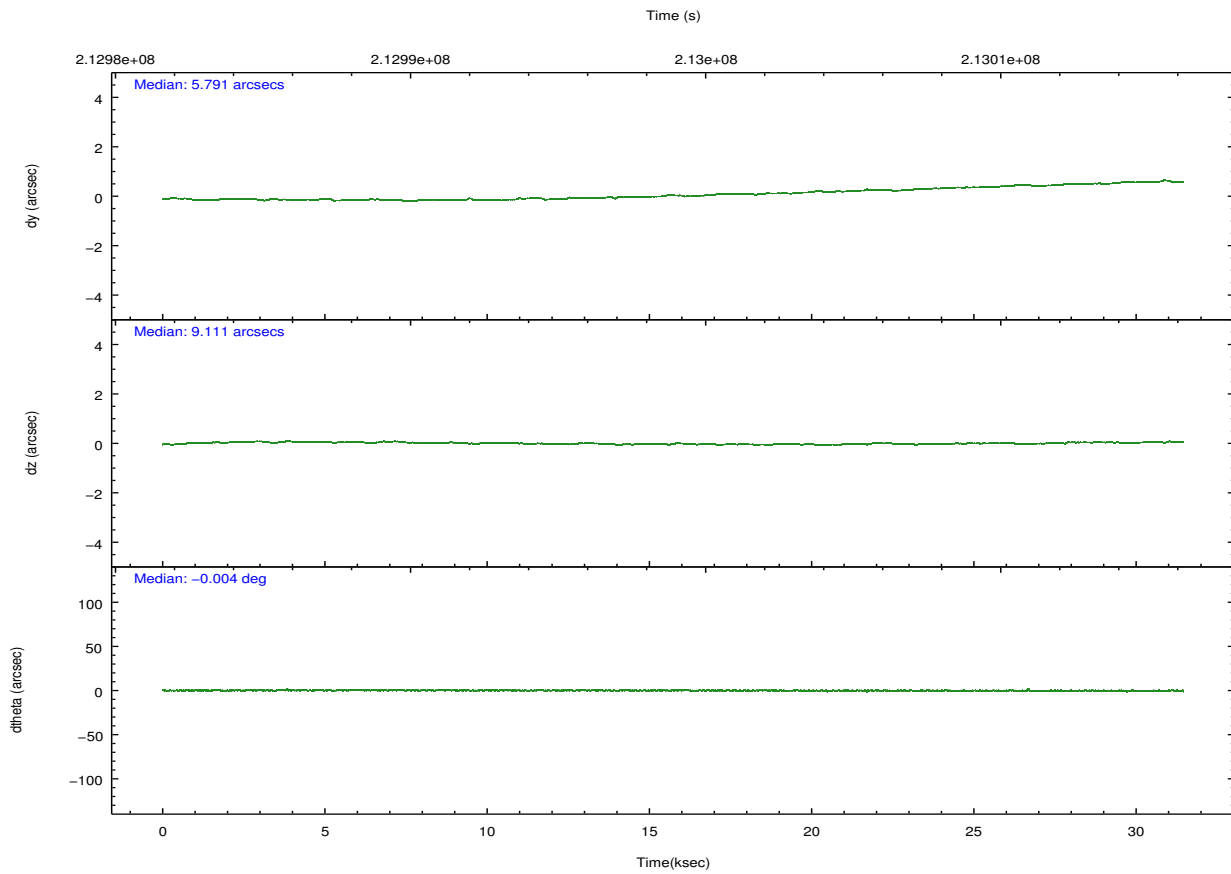
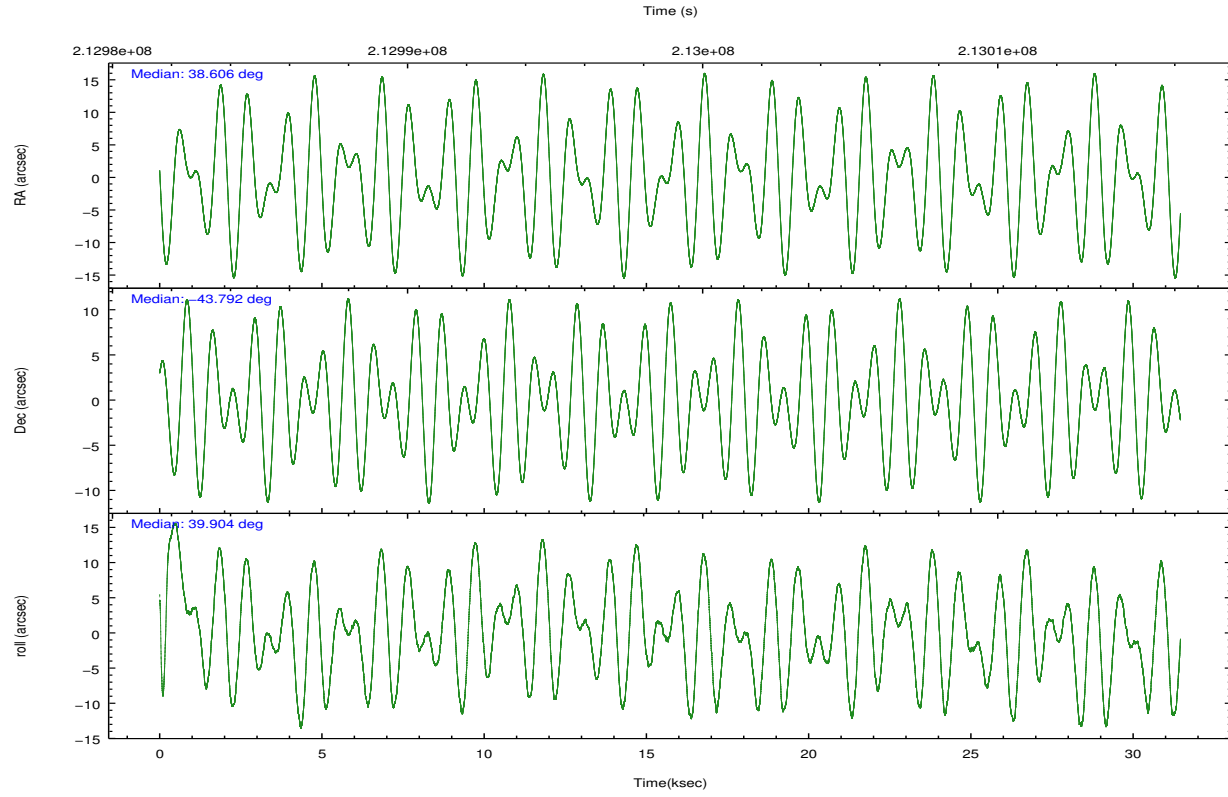
2.1.4 Events

	ccd 4	ccd 5	ccd 6	ccd 7	ccd 8	ccd 9		ccd 4	ccd 5	ccd 6	ccd 7	ccd 8	ccd 9
level 1 events	268591	366020	256583	334753	309016	238226	grade 0 events	22108	25977	24737	15297	30306	13650
rejected events	229820	190308	212012	188219	233891	207555		8%	7%	9%	4%	9%	5%
rejected %	85%	51%	82%	56%	75%	87%	grade 1 events	312	804	216	487	250	126
								0%	0%	0%	0%	0%	0%
							grade 2 events	6077	51893	7456	29726	14830	5656
								2%	14%	2%	8%	4%	2%
							grade 3 events	2920	6667	3298	13243	6987	3033
								1%	1%	1%	3%	2%	1%
							grade 4 events	2961	6389	3187	13379	6524	2831
								1%	1%	1%	3%	2%	1%
							grade 5 events	10349	25559	11021	31091	14177	11492
								3%	6%	4%	9%	4%	4%
							grade 6 events	4709	84808	5900	74904	16494	5508
								1%	23%	2%	22%	5%	2%
							grade 7 events	219155	163923	200768	156626	219448	195930
								81%	44%	78%	46%	71%	82%

2.2 Compared Parameters

Parameter	Planned	Actual	Parameter	Planned	Actual
Instrument	ACIS	ACIS	Obspar format version number	7	7
Detector	ACIS-456789	ACIS-456789	Obspar file type	PREDICTED	ACTUAL
Grating	HETG	HETG	Obspar update status	NONE	UPDATED
Data mode	FAINT	FAINT	Number of optional ACIS chips dropped	0	0
Observation mode	POINTING	POINTING	On-chip summing requested	N	N
[deg] Pointing RA	38.593310	38.60576141713543	Subarray requested	NONE	NONE
[deg] Pointing Dec	-43.817257	-43.79154316190449	Alternating exposures requested	N	N
[deg] Pointing Roll	39.749404	39.91464971139956	[s] Primary exposure time	0.000000	3.2
[mm] SIM focus pos	-0.684267	-0.6828225247311905			
[mm] SIM defocus	0	0.001444936568705701			
[mm] SIM translation stage pos	-187.132523	-187.1228876879999			
[mm] SIM translation stage offset	-3	-3.009634895007935			
[s] Observation start time (MET)	212983628.184000	212982472.95557			
Observation start date	2004-10-01T02:06:04	2004-10-01T01:47:52			
[s] Observation end time (MET)	213014628.184000	213015116.64453			
Observation end date	2004-10-01T10:42:44	2004-10-01T10:51:56			
Read mode	TIMED	TIMED			

2.3 Aspect

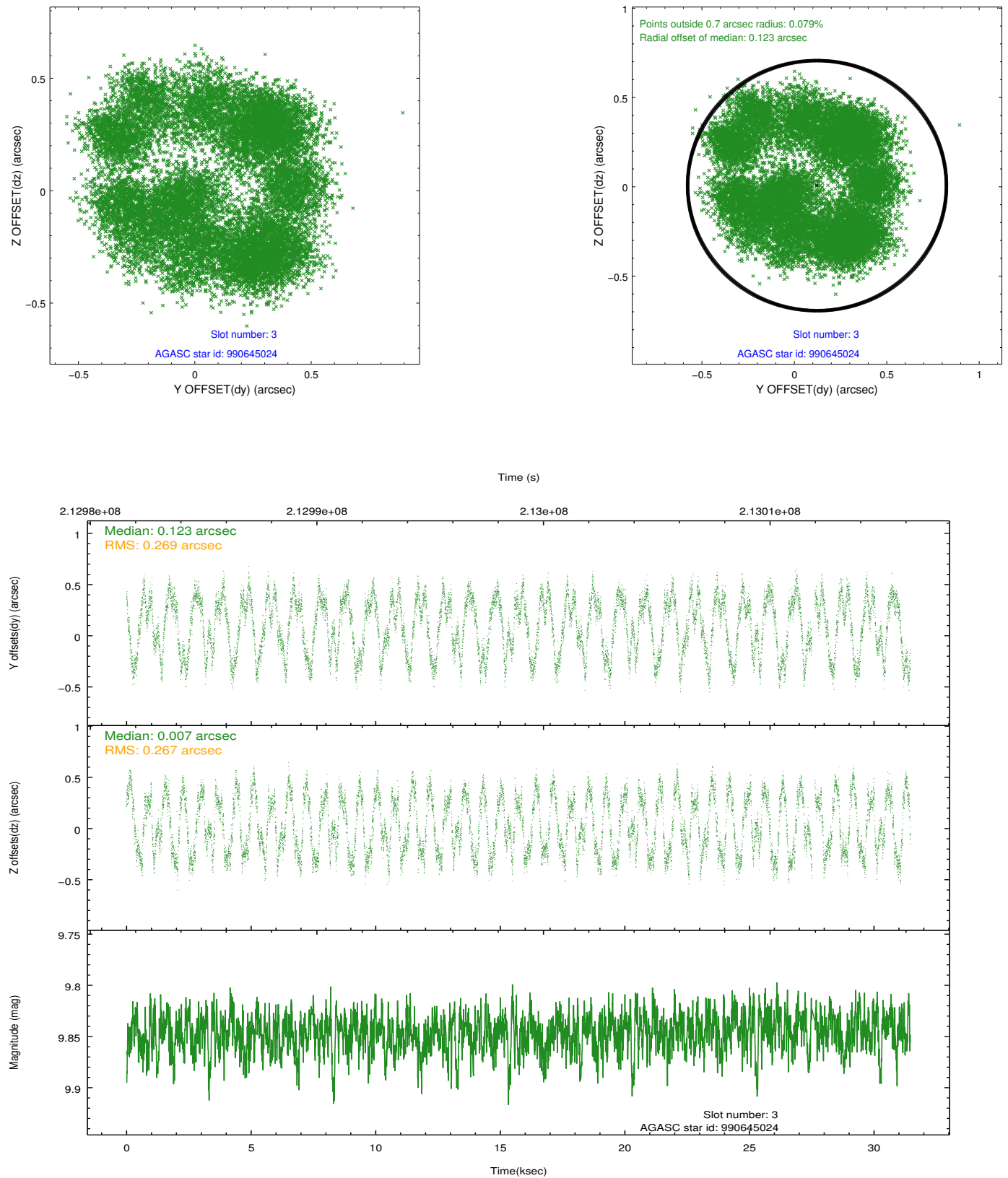


Slot Statistics

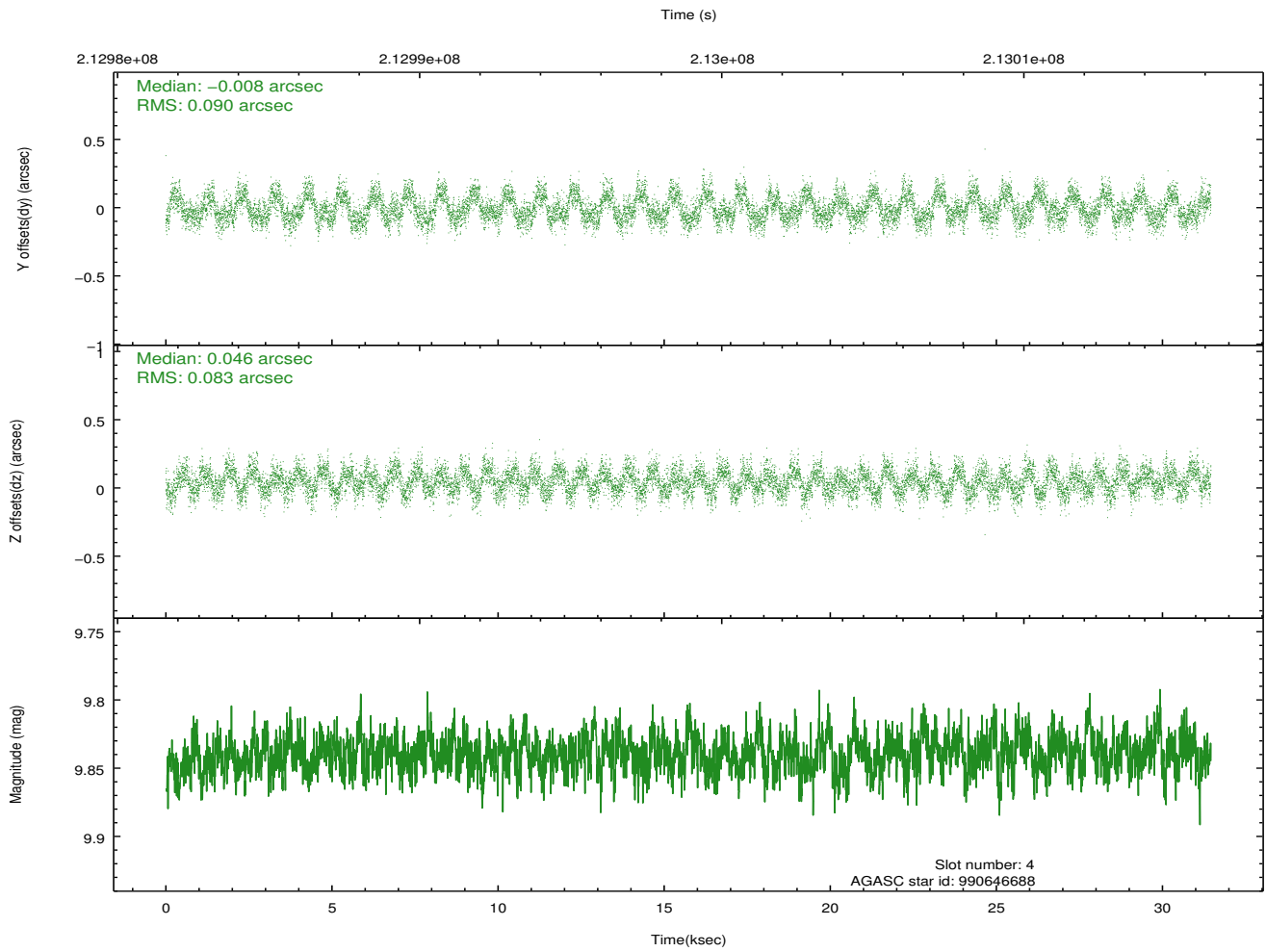
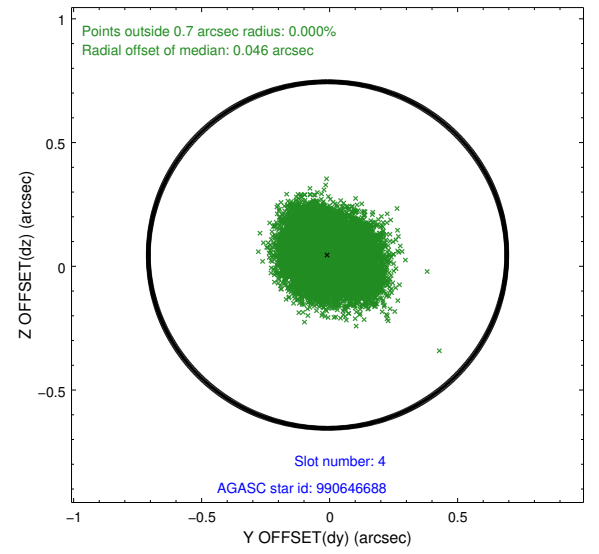
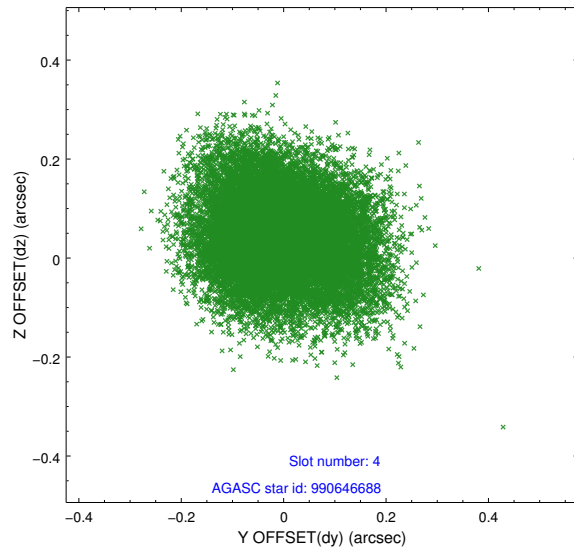
slot	status	id	mag	n_pts	med_dy	med_dz	dr1	dr2	ra	dec	mean_y	mean_z
0	FID	ACIS-S-2	7.09	7673	-0.083	-0.060	0.007	0.011	0.000000	0.000000	-758.48	-1792.53
1	FID	ACIS-S-4	7.20	7672	0.128	0.056	0.007	0.012	0.000000	0.000000	2154.98	115.99
2	FID	ACIS-S-5	7.23	7674	-0.076	0.012	0.008	0.013	0.000000	0.000000	-1811.24	109.69
3	GUIDE	990645024	9.85	15241	0.123	0.007	0.416	0.558	39.438677	-43.570616	2256.55	-735.58
4	GUIDE	990646688	9.84	15328	-0.008	0.046	0.132	0.205	39.195111	-43.949146	892.81	-1366.94
5	GUIDE	990647840	9.66	15332	-0.021	-0.029	0.171	0.258	39.476651	-43.890480	1586.23	-1677.61
6	GUIDE	990648904	9.32	15330	0.006	0.072	0.138	0.207	39.426522	-43.673133	1994.46	-997.12
7	GUIDE	990646896	9.06	15336	-0.069	-0.112	0.111	0.174	39.157415	-43.282359	2365.10	531.40

2.4 Star Slots

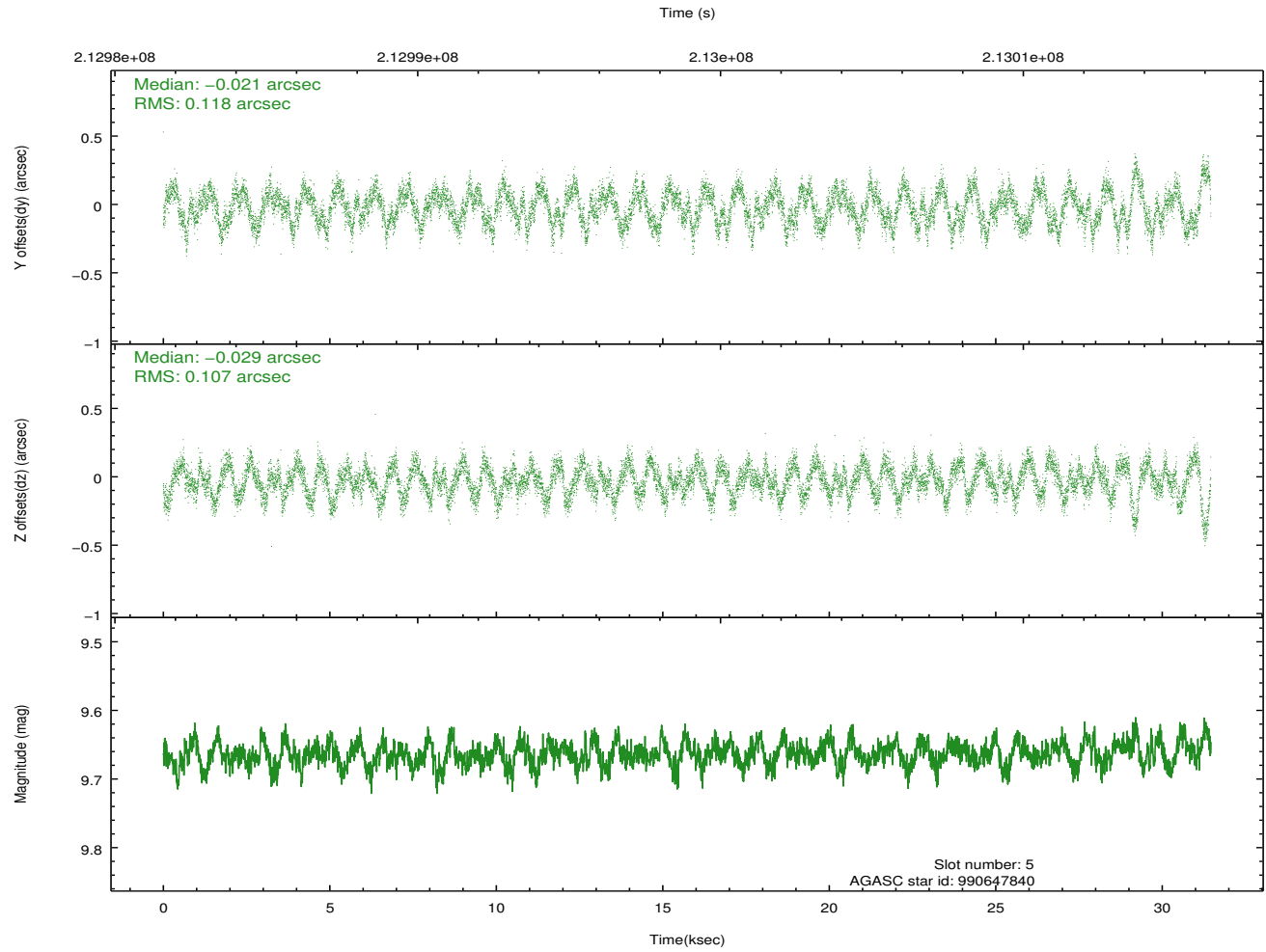
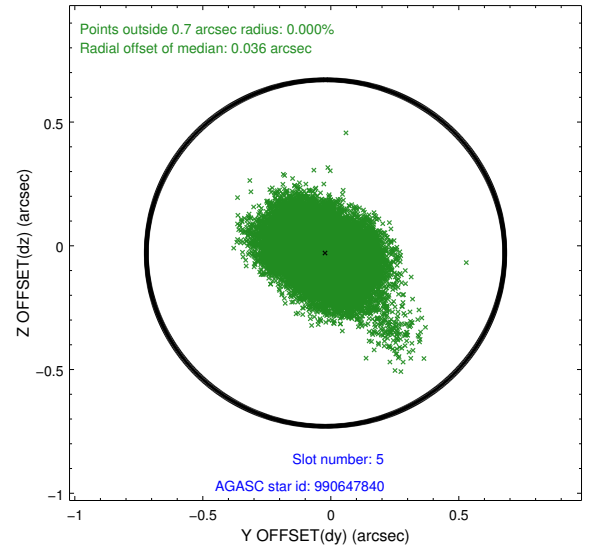
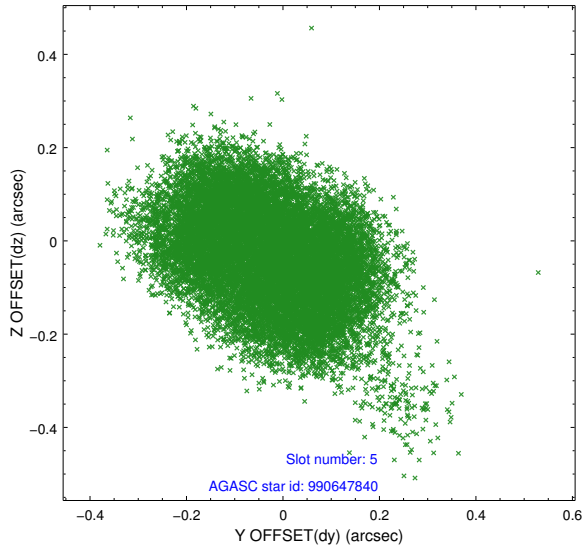
2.4.1 Slot 3



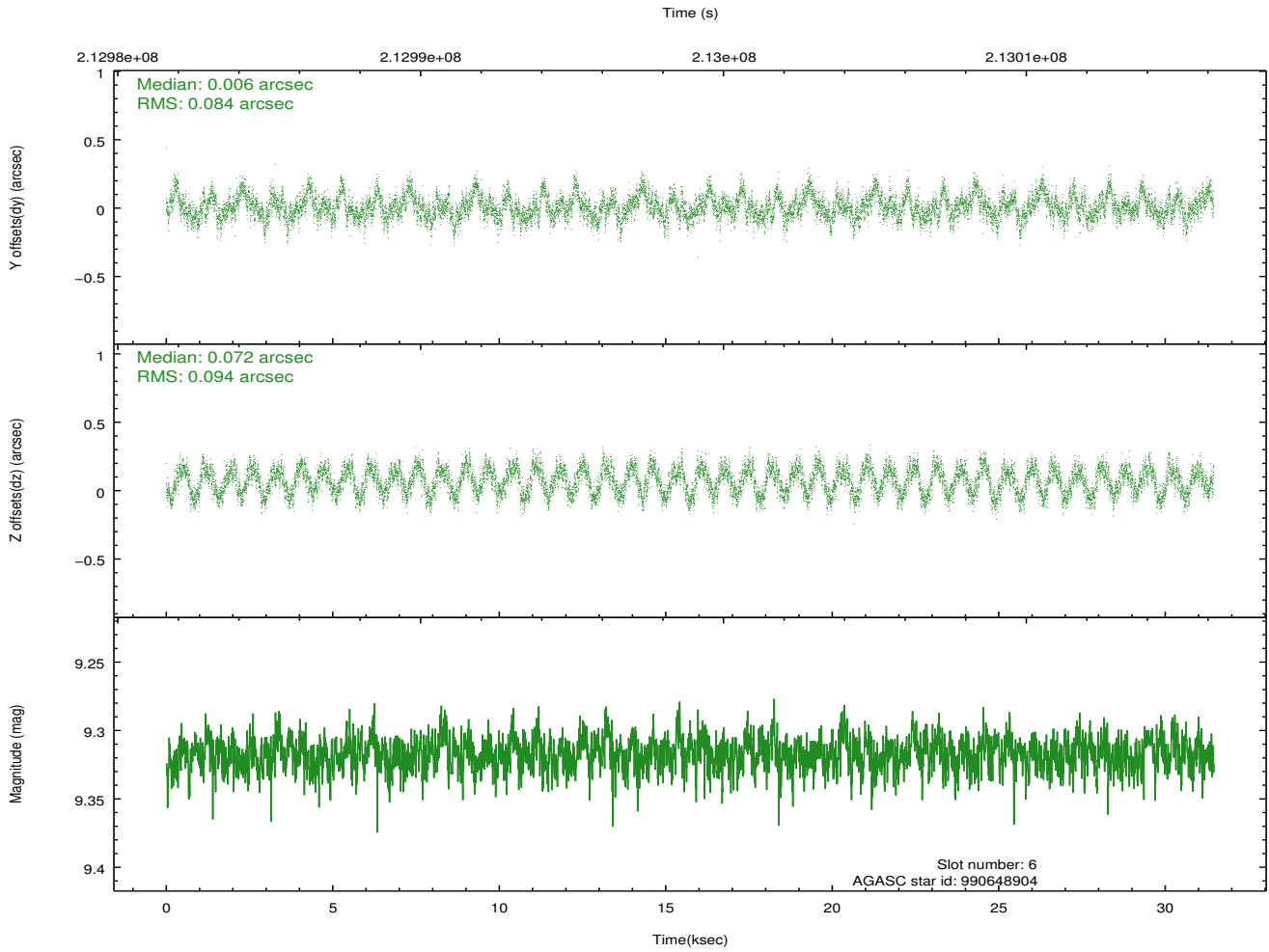
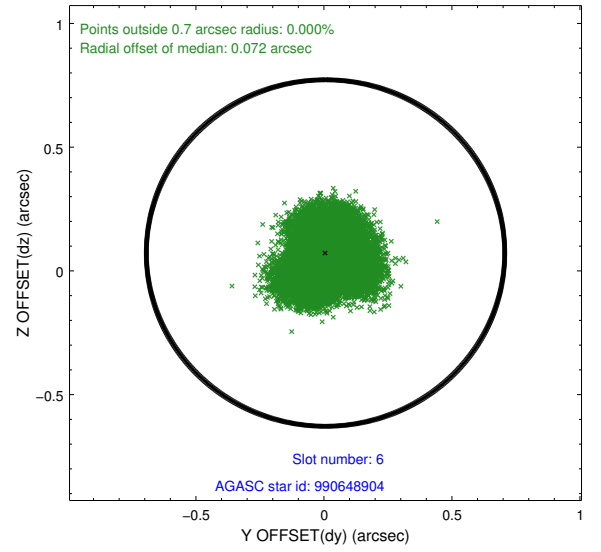
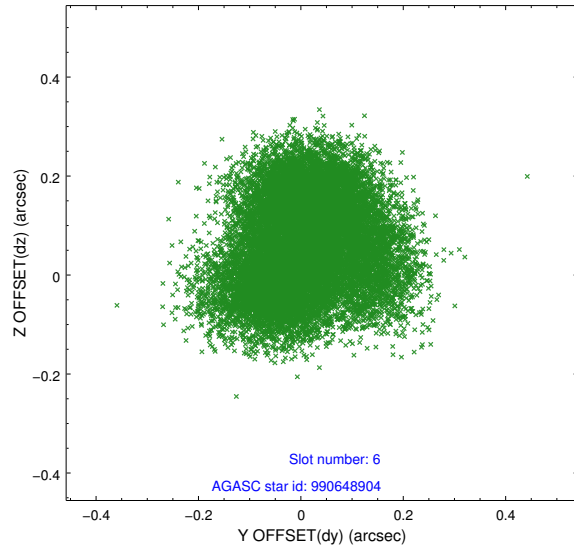
2.4.2 Slot 4



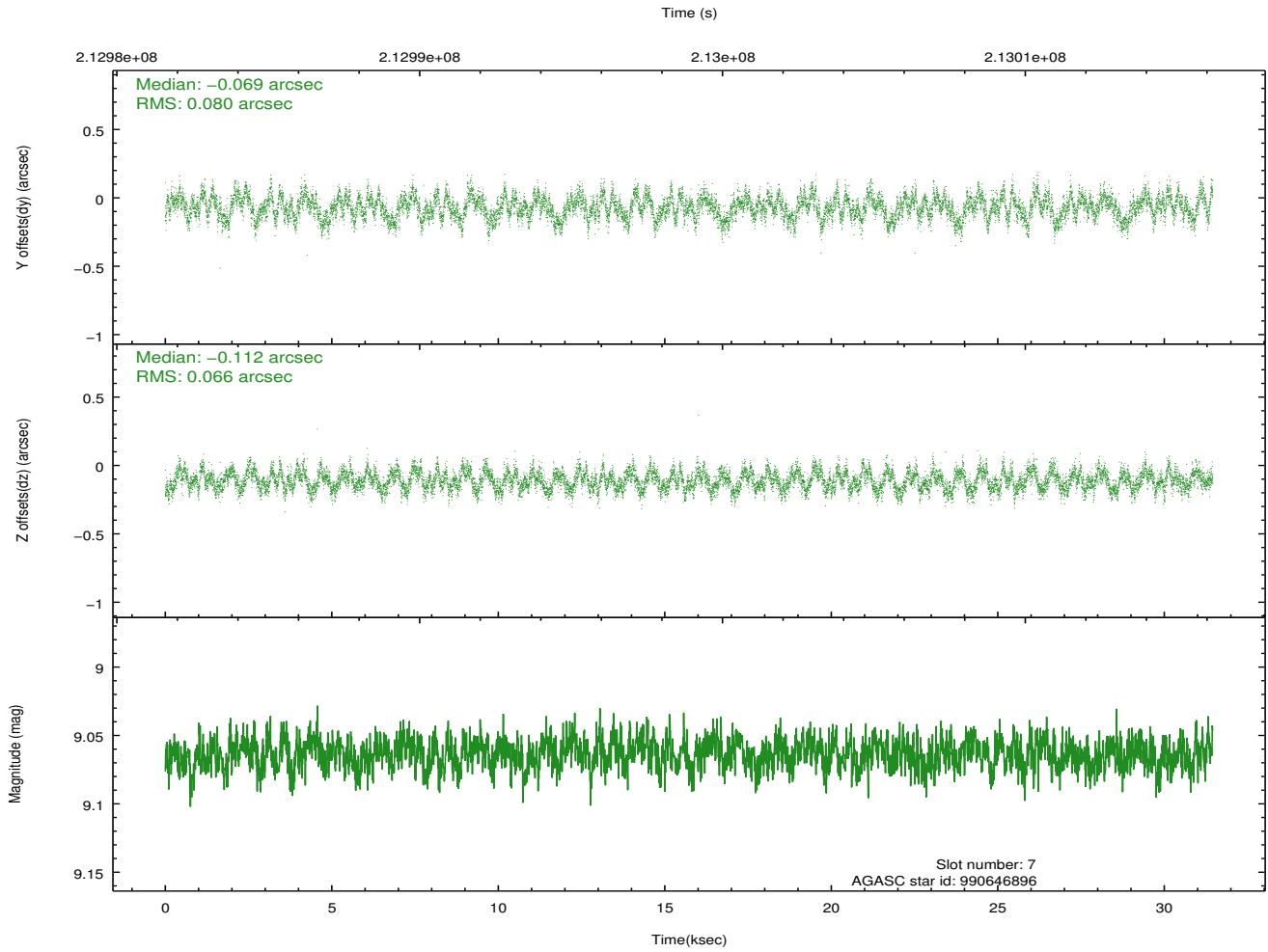
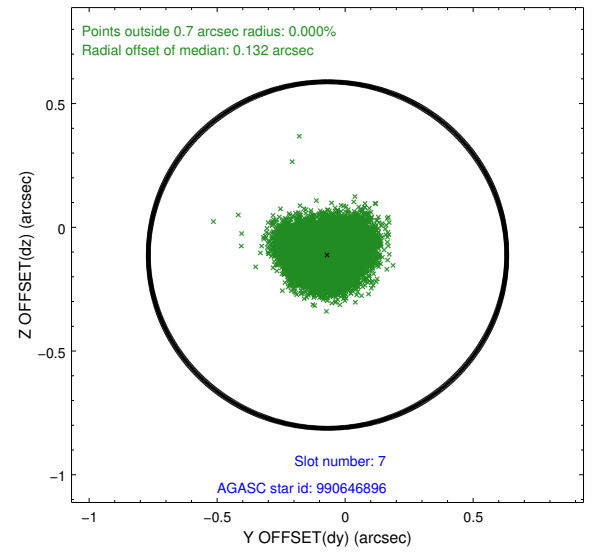
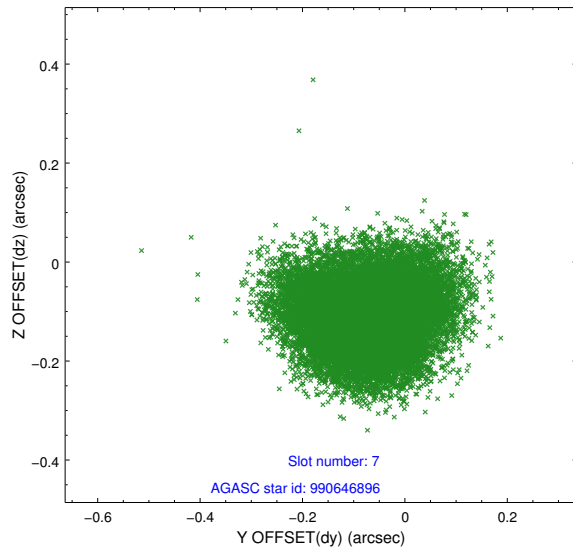
2.4.3 Slot 5



2.4.4 Slot 6

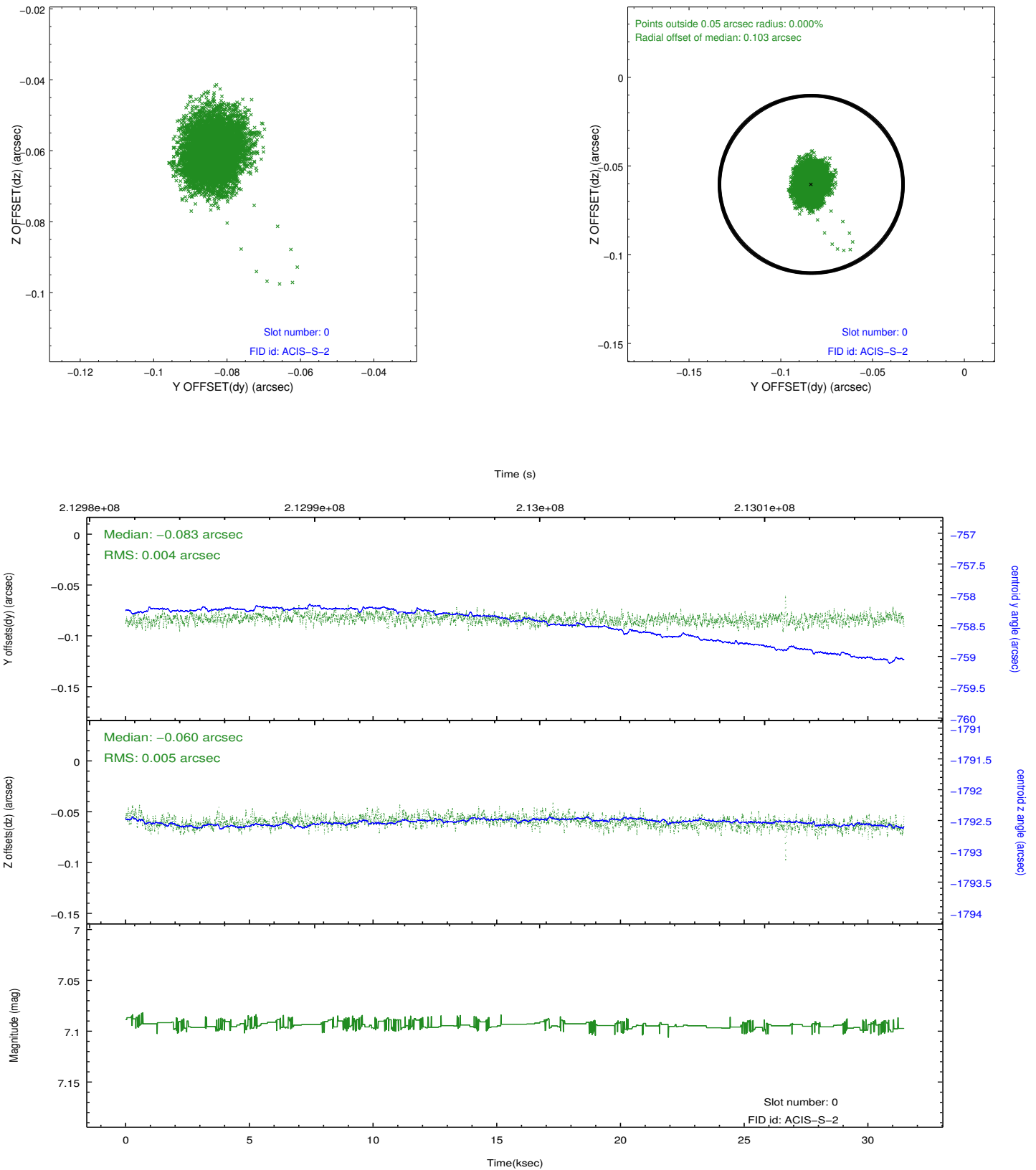


2.4.5 Slot 7

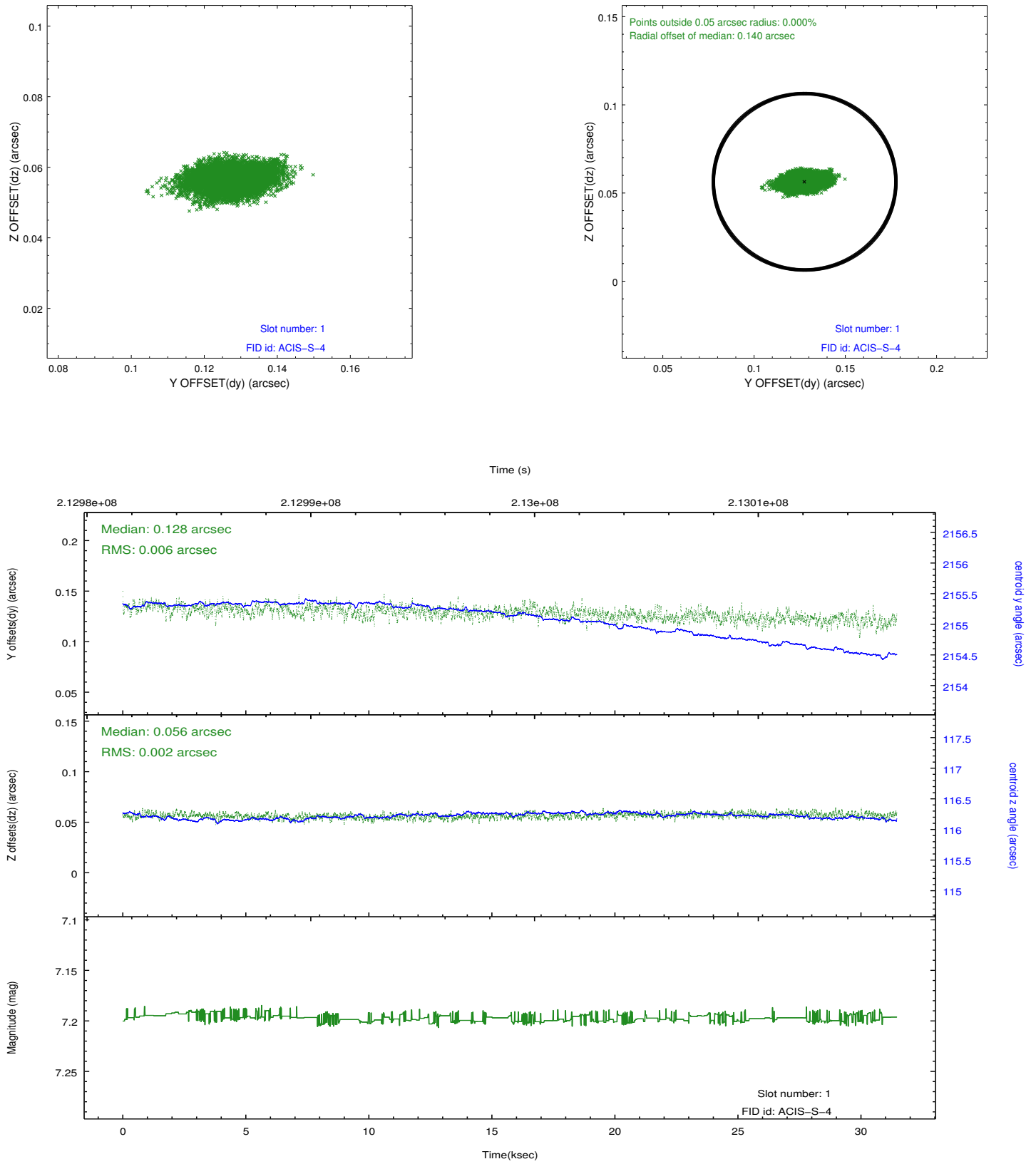


2.5 FID Slots

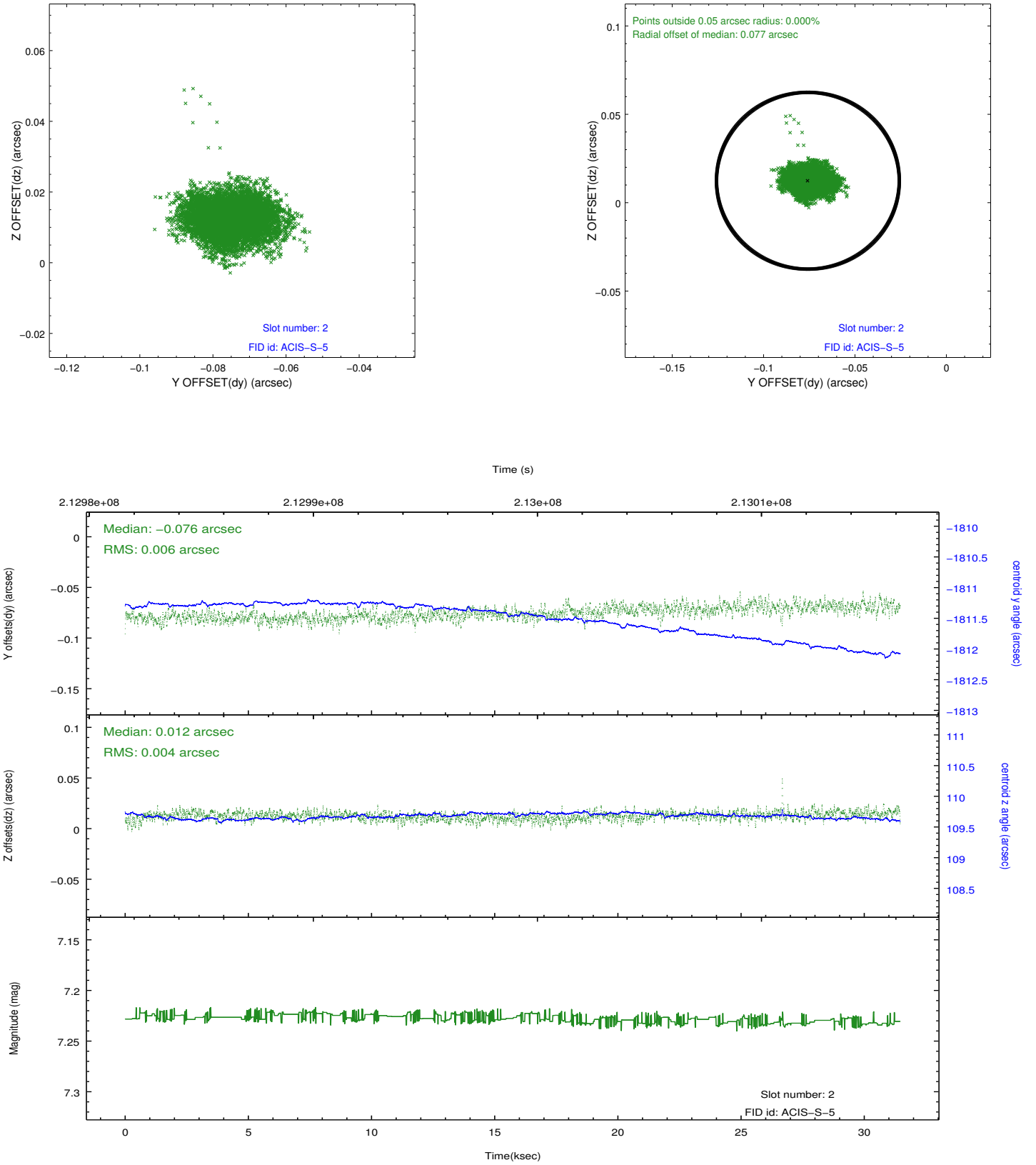
2.5.1 Slot 0



2.5.2 Slot 1

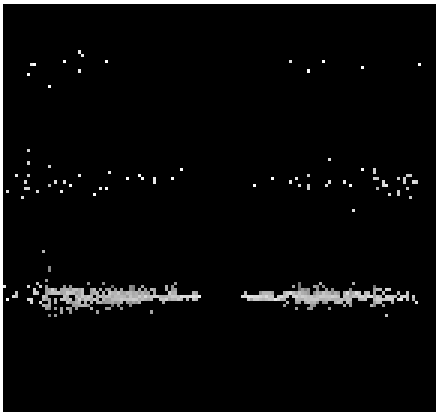


2.5.3 Slot 2

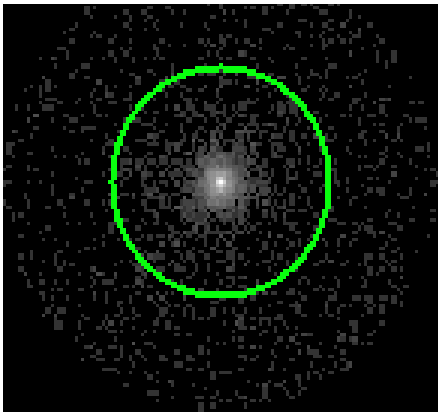


3 Gratings

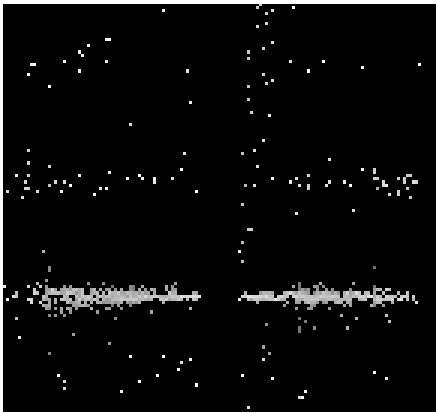
3.1 HEG Arm



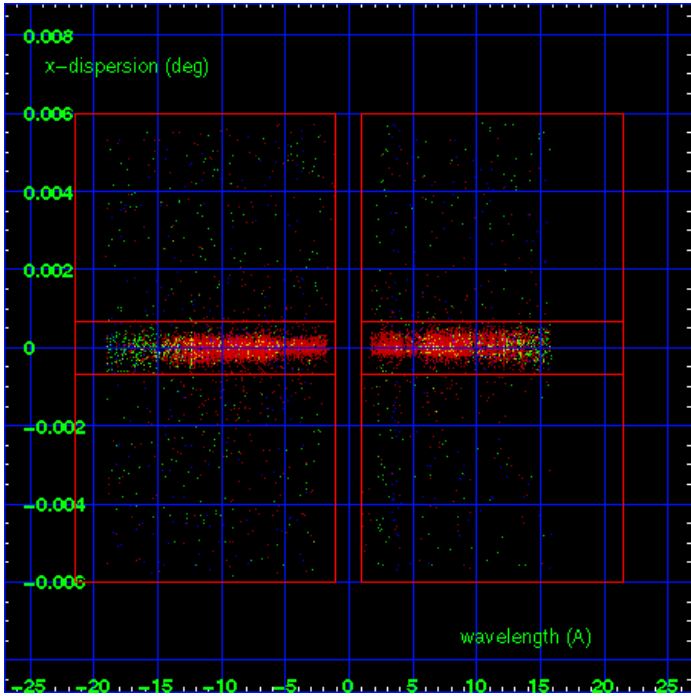
HEG Order Sort 123



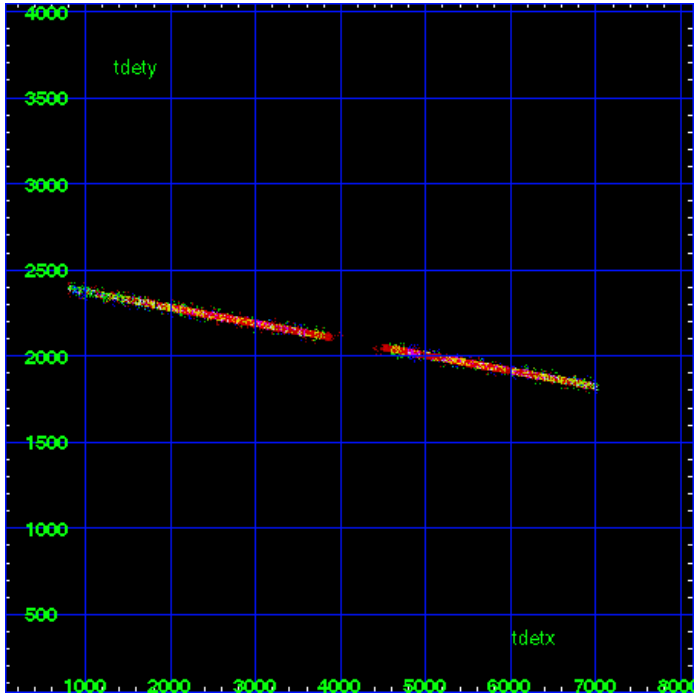
HEG Zero Order



HEG Order Sort ALL

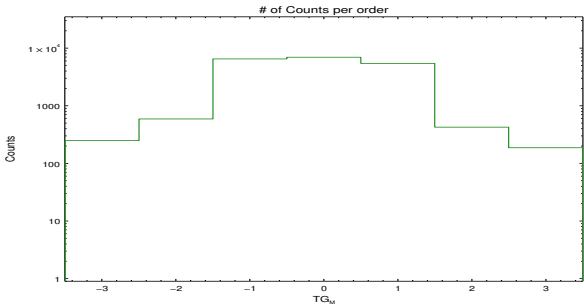


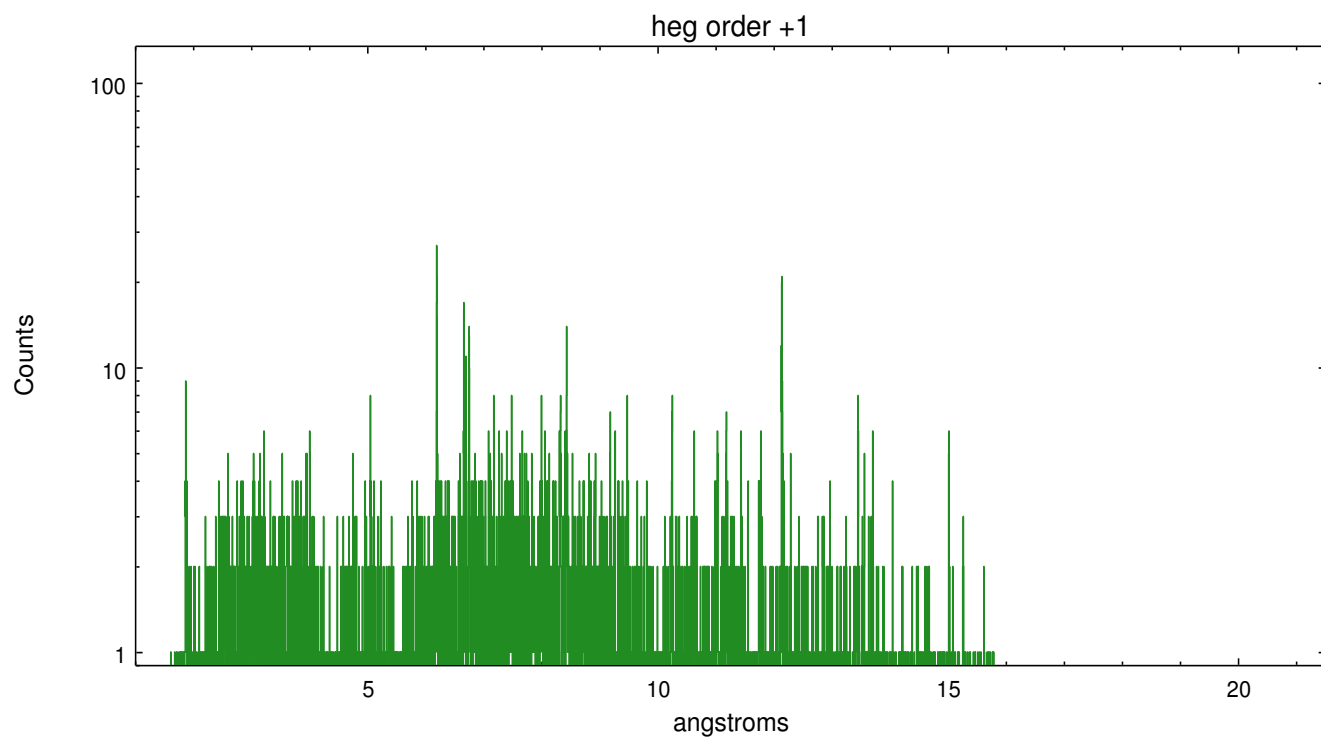
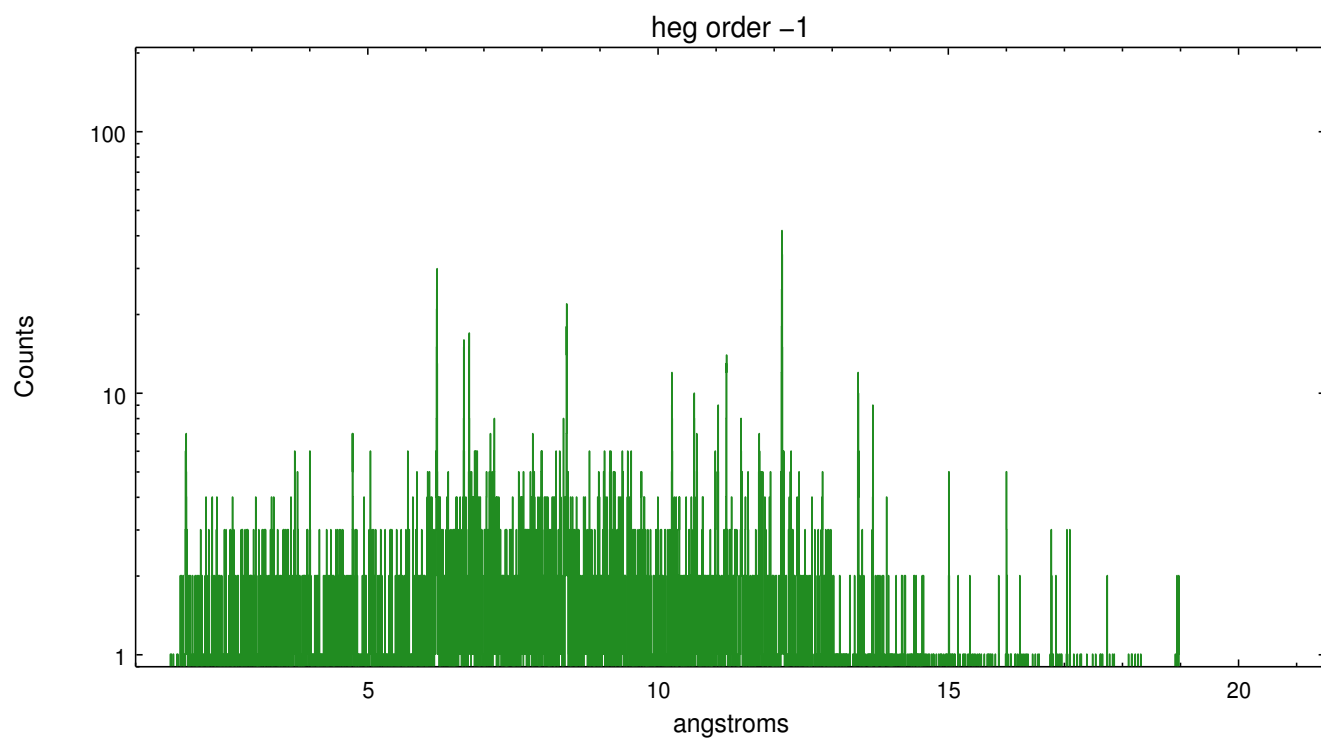
Spot Image HEG



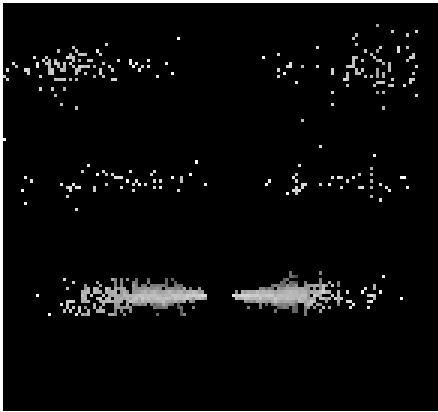
Full Detector HEG

	order -3	order -2	order -1	order 0	order 1	order 2	order 3
Events	249	592	6544	6996	5473	426	187

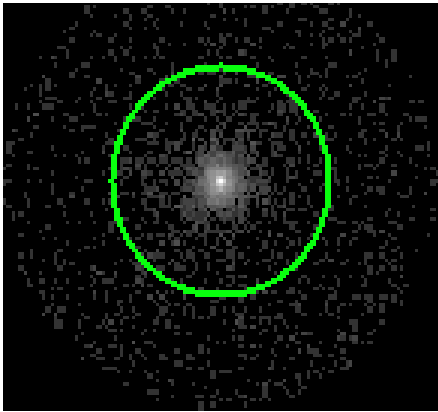




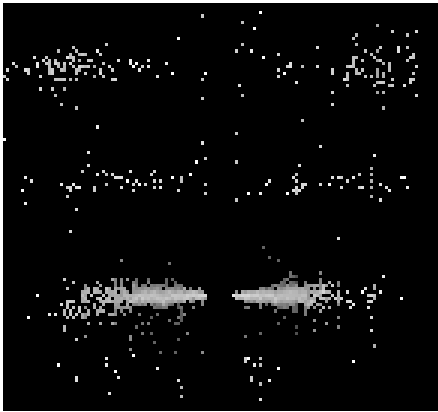
3.2 MEG Arm



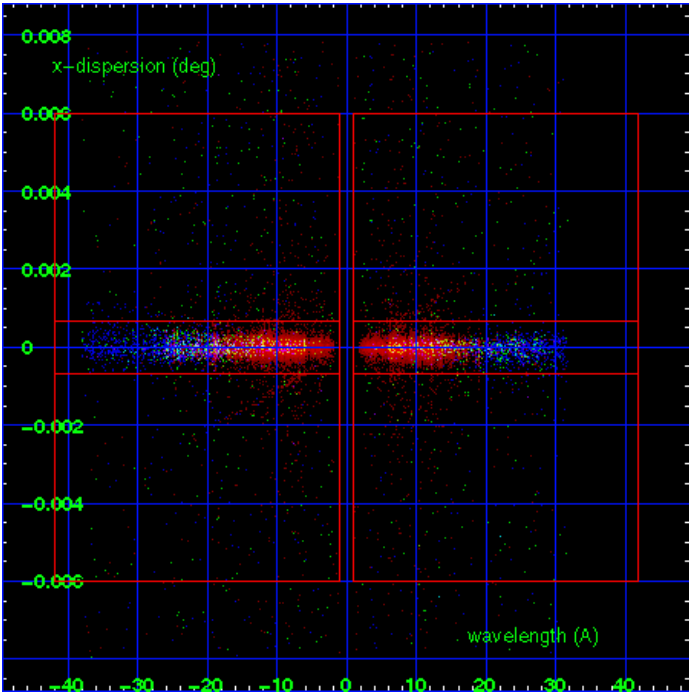
MEG Order Sort 123



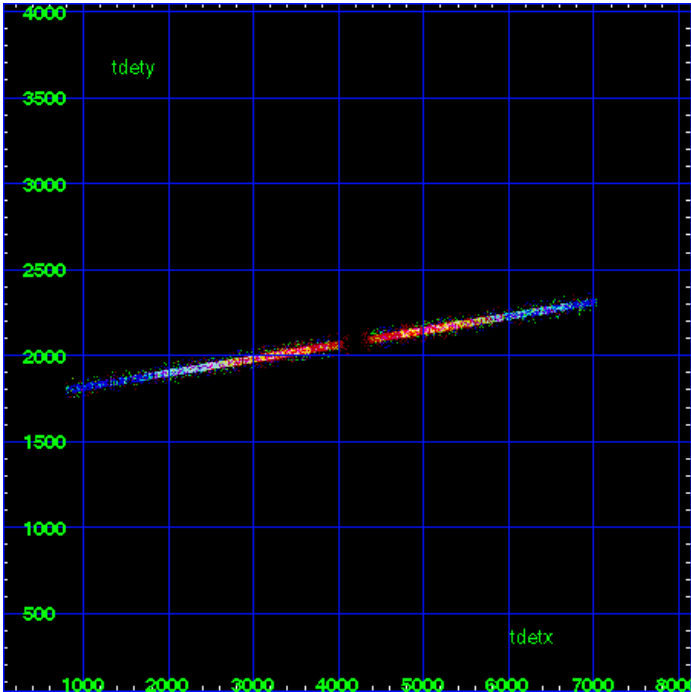
MEG Zero Order



MEG Order Sort ALL

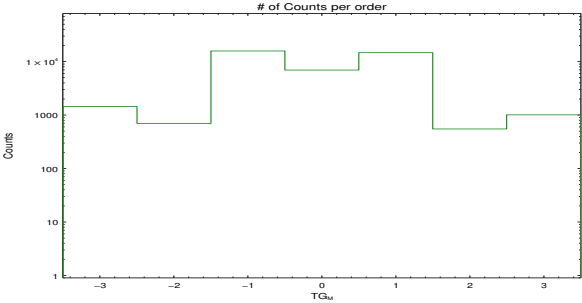


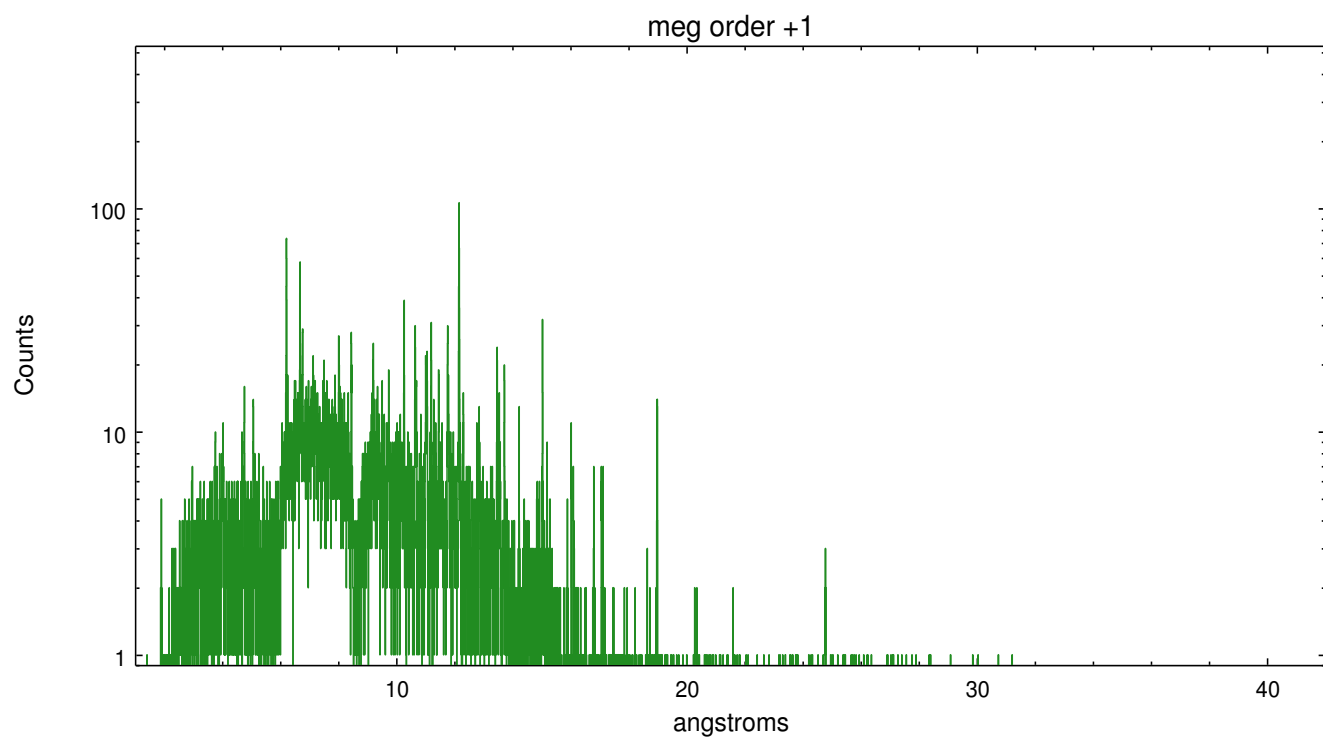
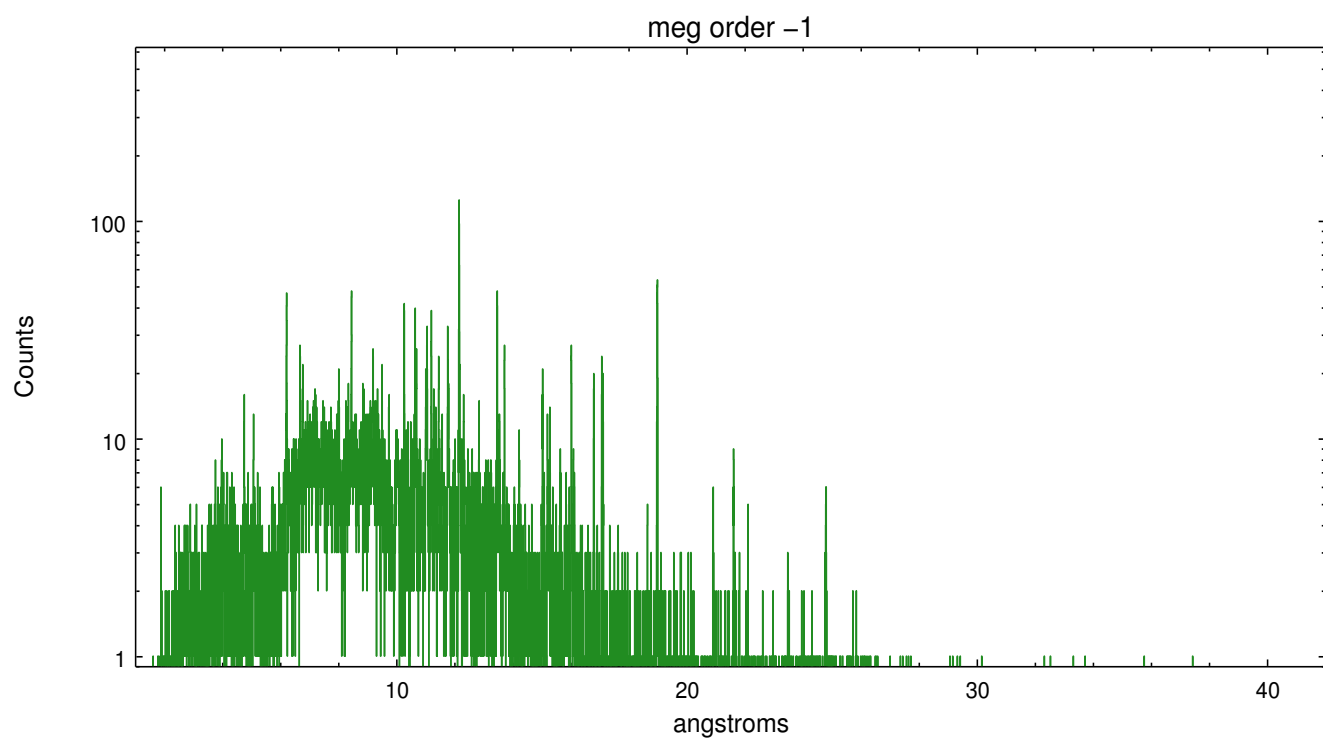
Spot Image MEG



Full Detector MEG

	order -3	order -2	order -1	order 0	order 1	order 2	order 3
Events	1449	699	15924	6996	14806	551	1013





A Summary

A.1 Status

V&V Scientist	Joy Nichols
V&V Date (YYYY-MM-DD)	2013.01.10
V&V Edition	1
V&V Disposition and Status	OK
V&V Charge Time	30.953

A.2 Comments