

# V&V Reference Report

## L2 ASCDS Version : 7.6.9

Observation 61132 - L2 Version 001  
Chandra X-Ray Center

L2 Processing Date : Sep 23 2006

## Contents

<b>1</b>	<b>Front</b>	<b>2</b>
<b>2</b>	<b>OBI</b>	<b>3</b>
2.1	OBI . . . . .	3
2.1.1	Images . . . . .	3
2.1.2	Bias . . . . .	3
2.1.3	Parameters . . . . .	4
2.1.4	Events . . . . .	4
2.2	Compared Parameters . . . . .	5
2.3	Aspect . . . . .	6
2.4	Star Slots . . . . .	8
2.5	FID Slots . . . . .	8
<b>A</b>	<b>Summary</b>	<b>9</b>
A.1	Status . . . . .	9
A.2	Comments . . . . .	9

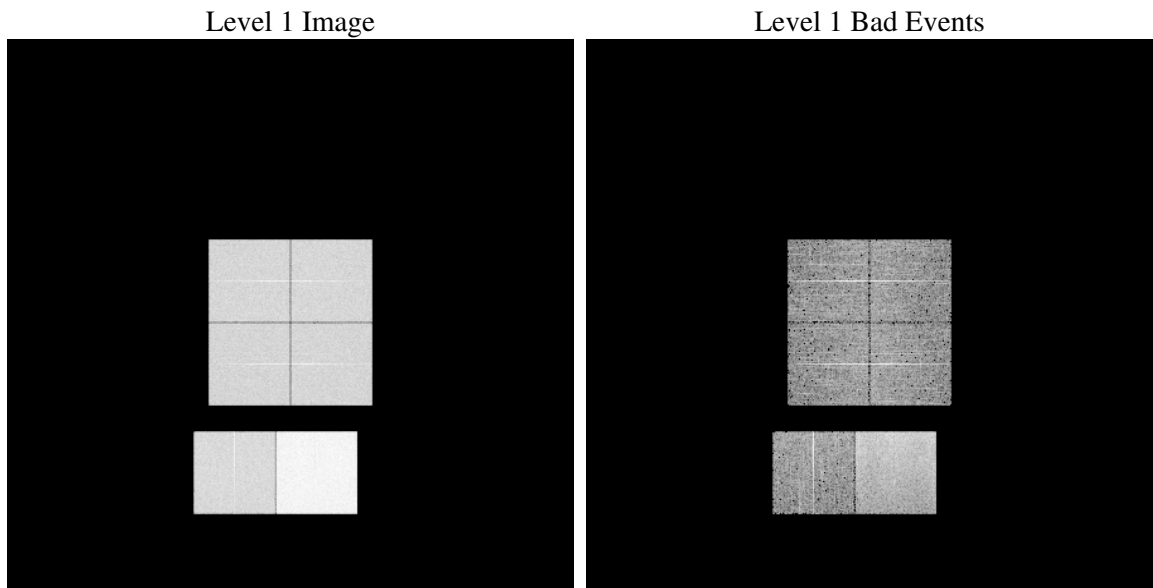
# 1 Front

seq_num	&#160
obs_id	61132
title	ACIS-012367 diagnostics
observer	CHANDRA engineering request/realtime commanding
object	&#160
dtcycle	0
cycle	P
ra_targ	0.0
dec_targ	0.0
ra_nom	345.97140987021
dec_nom	22.310922253849
roll_nom	124.72840749475
revision	2
ontime	8412.7999686599
livetime	8306.2720298767
ontime0	3888.4015955925
ontime1	3891.3035418689
ontime2	3697.181671083
ontime3	3693.940950036
ontime6	4050.451861918
ontime7	8412.7999686599
l2events	1291064

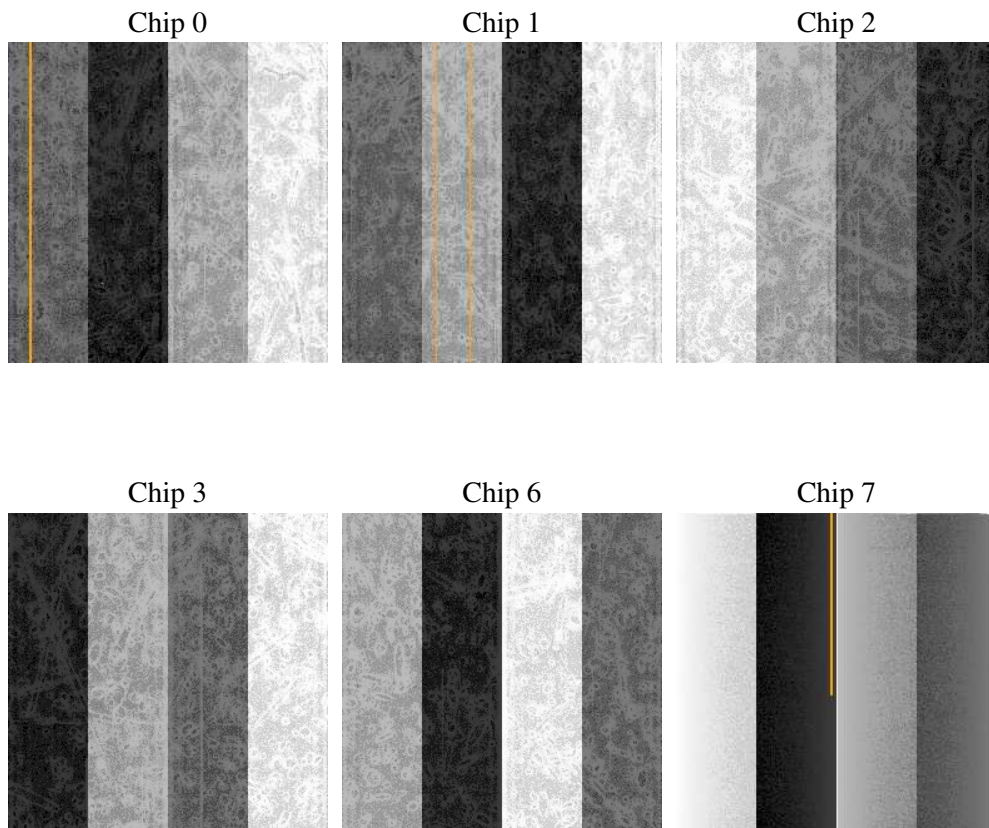
## 2 OBI

### 2.1 OBI

#### 2.1.1 Images



#### 2.1.2 Bias



### 2.1.3 Parameters

obi_num	0
ascdsver	7.6.9
caldbver	3.2.3
date	2006-09-23T03:26:38
revision	2

sched_exp_time	0.0
ontime	8465.4932473004
ontime0	3905.4440321922
ontime1	3915.1658468843
ontime2	3720.7061876655
ontime3	3720.7064567506
ontime6	4073.9763586223
ontime7	8465.4932473004
l1events	1556776

### 2.1.4 Events

	ccd 0	ccd 1	ccd 2	ccd 3	ccd 6	ccd 7
level 1 events	215298	216409	207681	210306	234662	472420
rejected events	28296	27978	27987	29733	30545	64190
rejected %	13%	12%	13%	14%	13%	13%

	ccd 0	ccd 1	ccd 2	ccd 3	ccd 6	ccd 7
grade 0 events	103375	104230	99876	101673	111463	72021
	48%	48%	48%	48%	47%	15%
grade 1 events	520	476	495	508	494	177
	0%	0%	0%	0%	0%	0%
grade 2 events	33490	33571	32349	32074	35937	126363
	15%	15%	15%	15%	15%	26%
grade 3 events	11763	11953	11277	11237	12586	29661
	5%	5%	5%	5%	5%	6%
grade 4 events	11711	11764	11319	11219	12637	29198
	5%	5%	5%	5%	5%	6%
grade 5 events	1859	1969	1798	1892	2196	7987
	0%	0%	0%	0%	0%	1%
grade 6 events	27476	28013	26029	25675	32661	153525
	12%	12%	12%	12%	13%	32%
grade 7 events	25104	24433	24538	26028	26688	53488
	11%	11%	11%	12%	11%	11%

## 2.2 Compared Parameters

Parameter	Planned	Actual	Parameter	Planned	Actual
Instrument	ACIS	ACIS	Obspar format version number	6	6
Detector	ACIS-012367	ACIS-012367	Obspar file type	PREDICTED	ACTUAL
Grating	NONE	NONE	Obspar update status	NONE	UPDATED
Data mode	FAINT	FAINT	On-chip summing requested	N	N
Observation mode	SECONDARY	SECONDARY	Subarray requested	NONE	NONE
Pointing RA	0	345.9714098702142	Alternating exposures requested	N	N
Pointing Dec	0	22.31092225384884	Primary exposure time	3.2	3.2
Pointing Roll	0.0	124.7284074947546			
SIM focus pos (mm)	-0.782348	-0.7809083437167272			
SIM defocus (mm)	0	0.7524282956875696			
SIM translation stage pos (mm)	-233.592463	250.466033080201			
SIM translation stage offset (mm)	0	-0.01005468664627074			
Observation start time	142589624.263248	142589623.23854			
Observation start date	2002-07-09T08:13:44	2002-07-09T08:13:43			
Observation end time	142610934.014126	142610932.98941			
Observation end date	2002-07-09T14:08:54	2002-07-09T14:08:52			
Read mode	TIMED	TIMED			

## 2.3 Aspect



## **2.4 Star Slots**

## **2.5 FID Slots**



# A Summary

## A.1 Status

V&V Scientist	Beth Sundheim
V&V Date (YYYY-MM-DD)	2006.09.24
V&V Edition	1
V&V Disposition and Status	OK
V&V Charge Time	8.41279996

## A.2 Comments

Focal plane temperature is warmer than -118 degrees during most of observation. The ACIS calibrations are not verified or necessarily applicable for focal plane temperatures warmer than -118 degrees.